

ERLA DK Sweater



Valentina's
Knits

Introducing the Erla DK Sweater: a stylish and sophisticated addition to your knitting repertoire.



Crafted with DK weight yarn, this sweater features a striking scalloped V-neck that catches the eye and adds a touch of elegance. The body and sleeves are adorned with an intricate pattern of twisted and wrapped stitches, creating a beautifully textured fabric that's as fun to knit as it is to wear.

Whether you're dressing up for a special occasion or seeking a cozy yet chic everyday piece, the Erla DK Sweater is the perfect choice to showcase your knitting skills.

The range of positive ease across sizes is 23-30 cm / 9.5-12". The picture shows size 4 with 28.5 cm / 11.5" of positive ease.

○ YARN

COTTON MERINO FINE by **CONCEPT BY KATIA**, DK/Light weight, (70% cotton, 30% virgin wool), 75 m/82 yds in 25 Gr

Grams: 395 (435, 475, 540, 605)

Meters: 1185 (1305, 1425, 1620, 1815)

Yards: 1295 (1425, 1560, 1770, 1985)

I used color No. 80 (Natural White)

✂ NEEDLES

- 2.5 mm/U.S. size 1.5 80 cm/32" circular needles
- 2.5 mm/U.S. size 1.5 dpns or your preferred needles for knitting small circumference in the round (neck)
- 3.0 mm/U.S. size 2.5 80 cm/32" circular needles, or size needed to obtain gauge
- 3.0 mm/U.S. size 2.5 circular needles or your preferred needles for knitting small circumference in the round (sleeves)

! NOTIONS

- stitch holders or waste yarn
- cable needle
- main marker and smaller markers for chart sections
- tapestry needle or crochet hook to weave in ends

☐ GAUGE

24 sts/29 RNDs = 10 cm/4" square in pattern on 3.0 mm/
U.S. size 2.5 needles after blocking

🏷 SIZES

1 (2, 3, 4, 5)

to fit chest circumference: 70 (80, 90, 100, 110) cm/
28 (32, 36, 40, 44)"

↔ FINISHED CHEST MEASUREMENT

93.5 (105, 116.5, 128.5, 140) cm
37.5 (42, 46.5, 51.5, 56)"

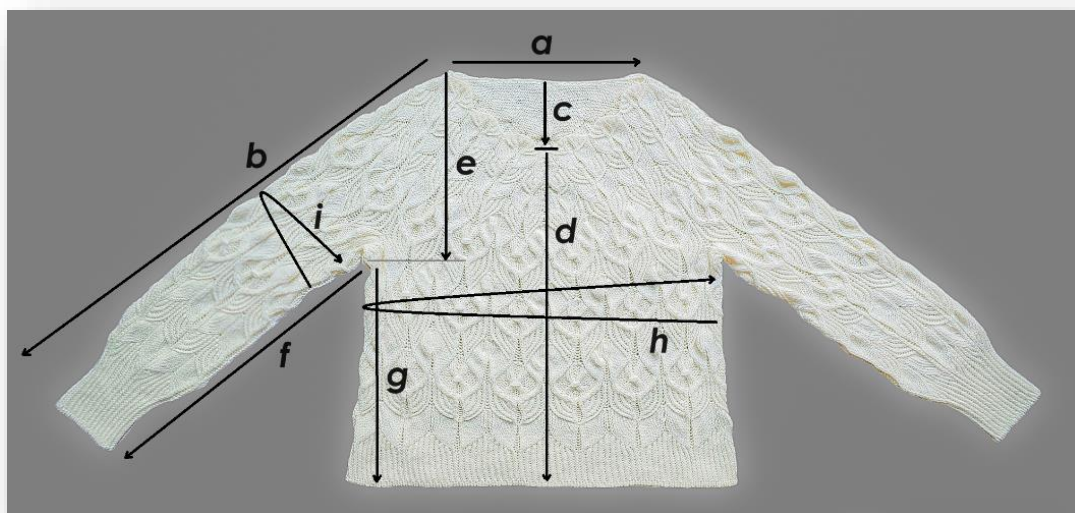
☰ PATTERN NOTES

- The sweater is worked in one piece top down.
- You start with the circular yoke according to the charts (written instructions for the charts are also provided).
- After the circular yoke, you separate the sleeves and the body and continue working the sleeves and the body separately.
- Finally, you work the insert at the upper back part for neck shaping.

★ SKILLS REQUIRED

- basics (knit/purl, increase/decrease)
- Italian tubular bind off (written instructions and link to video tutorial are provided)
- working in the round
- working from a chart (written instructions are also provided)





MEASUREMENTS

SIZES:	1	2	3	4	5	
a neck width	27	27	27	27	27	cm
	10.5	10.5	10.5	10.5	10.5	inch
b sleeve length	60	61.5	62.5	66	70	cm
	24	24.5	25	26.5	28	inch
c neck depth	10	10	10	10	10	cm
	4	4	4	4	4	inch
d center front length	42.5	43	43.5	46	48	cm
	17	17.25	17.5	18.5	19.25	inch
e armhole depth	18.5	18.5	20	21.5	22.5	cm
	7.5	7.5	8	8.5	9	inch
f sleeve length from underarm	42	43	43	45	48	cm
	16.75	17.25	17.25	18	19.25	inch
g body length from underarm	30.5	30.5	30	31	32	cm
	12.25	12.25	12	12.5	12.75	inch
h chest circumference	93.5	105	116.5	128.5	140	cm
	37.5	42	46.5	51.5	56	inch
i upper sleeve circumference	33.5	37.5	41.5	46	50	cm
	13.5	15	16.5	18.5	20	inch



ABBREVIATIONS

2/1 LC	_2/1 Left Cross: slip 2 stitches on cable needle and hold at front; k1; k2 from cable needle	m1r-p	_make one right purlwise: from back to front, lift the horizontal strand between stitches with the left needle and purl through the front loop (1 stitch increased)
2/1 RC	_2/1 Right Cross: slip 1 stitch on cable needle and hold at back; k2; k1 from cable needle	(M)M	_(main) marker
2/1 LPC	_2/1 Left Purl Cross: slip 2 stitches on cable needle and hold at front; p1; k2 from cable needle	p	_purl
2/1 RPC	_2/1 Right Purl Cross: slip 1 stitch on cable needle and hold at back; k2; p1 from cable needle	p into fbf	_purl into front, back and front of the same stitch (2 stitches increased)
2/2 LC	_2/2 Left Cross: slip 2 stitches on cable needle and hold at front; k2; k2 from cable needle	P(M)M	_place (main) marker
2/2 RC	_2/2 Right Cross: slip 2 stitches on cable needle and hold at back; k2; k2 from cable needle	rep	_repeat
2/2 LPC	_2/2 Left Purl Cross: slip 2 stitches on cable needle and hold at front; p2; k2 from cable needle	RND	_round
2/2 RPC	_2/2 Right Purl Cross: slip 2 stitches on cable needle and hold at back; k2; p2 from cable needle	RS	_right side
BO	_bind off	sl1wyb	_slip 1 stitch with yarn held in back
BOR	_beginning of round	sl1wyf	_slip 1 stitch with yarn held in front
CM	_chart marker	SL(M)M	_slip (main) marker
CO	_cast on	ss(s)k	_slip-slip-(slip)-knit: slip the next 2(3) stitches, one by one, knitwise; insert the tip of the left needle, from left to right, into the fronts of those 2(3) stitches and knit them together (1(2) stitch(es) decreased)
k	_knit	ssp	_slip-slip-purl: slip the next 2 stitches, one by one to your right needle, knitwise; move these 2 stitches back to the left needle; insert the right needle into these 2 stitches through their back loops and purl them together (1 stitch decreased)
k2tog	_knit 2 stitches together (1 stitch decreased)	st (sts)	_stitch (stitches)
k tbl	_knit through back loop	St st	_Stockinette stitch
m1l	_make one left: from front to back, lift the horizontal strand between stitches with the left needle and knit through the back loop (1 stitch increased)	WS	_wrong side
m1r	_make one right: from back to front, lift the horizontal strand between stitches with the left needle and knit through the front loop (1 stitch increased)	wya5-4	_wind yarn around 5 stitches 4 times: slip 5 stitches on cable needle; wind yarn around these 5 stitches 4 times (counterclockwise) not too tight; return the 5 stitches back on left needle and k2, p1, k2
m1l-p	_make one left purlwise: from front to back, lift the horizontal strand between stitches with the left needle and purl through the back loop (1 stitch increased)		video tutorial to the similar method: https://www.youtube.com/watch?v=ONSuKXvhOKw

PATTERN STITCHES:

TUBULAR BIND OFF METHOD:

RND 1: (k1, sl1wyf) to end of RND.

RND 2: (sl1wyb, p1) to end of RND.

Graft the edge using Kitchener Stitch.

video tutorial for reference:

<https://www.youtube.com/watch?v=UzUapAv3cQM>



INSTRUCTIONS:

SECTION 1: CO AND CIRCULAR YOKE

With smaller needles, using the long-tail cast on method, CO 200 sts. Join in the round being careful not to twist. PMM for BOR (center back).

Work **CHART 1** for ALL SIZES (for CHARTS and written instructions please refer to Pages 8-24).

After finishing **CHART 1**, you have 320 sts.

Continue with CHART 2 for your Size, adding new CM where necessary (you will work 20 chart repeats per RND).

Work 18 (19, 23, 27, 30) RNDs of **CHART 2** before you separate for body and sleeves. This will allow for 4-5 cm/1.5-2" of ease for the armhole depth.

Total sts: 320 (360, 400, 440, 480).

NOTE: Consider trying on your sweater before separating the body and sleeves to determine if you have your desired yoke length. You can adjust the yoke length by adding or subtracting the number of Chart 2 RNDs worked before the separation RND. Working the back insert (Section 4) before the separation RND will aid in your decision making concerning your desired yoke length.

SECTION 2: SEPARATION OF BODY AND SLEEVES AND WORKING BODY AND HEM

When separating, you will have 6 chart repeats for each front and back and 4 chart repeats for each sleeve. For each underarm, you CO the amount of sts needed for a new chart repeat minus 1 st, thus you will have 14 chart repeats for the body and 5 for each sleeve.

RND 1: work 3 repeats of **CHART 2** (48 (54, 60, 66, 72) sts), put next 4 repeats of **CHART 2** except for the very last purl st on stitch holder (63 (71, 79, 87, 95) sts), CO 15 (17, 19, 21, 23) sts for underarm, p1, work 6 repeats of **CHART 2** (96 (108, 120, 132, 144) sts), put next 4 repeats of **CHART 2** except for the very last purl st on stitch holder (63 (71, 79, 87, 95) sts), CO 15 (17, 19, 21, 23) sts for underarm, p1, work 3 repeats of **CHART 2** (48 (54, 60, 66, 72) sts). You have 224 (252, 280, 308, 336) sts on your needles.

Continue working **CHART 2** over all sts. You will work 14 chart repeats.

FOR SIZES 1 and 2: after finishing 3 complete repeats of **CHART 2** (marked red), switch to **CHART 3** before hem.

FOR SIZE 3: after finishing 2 complete repeats of **CHART 2** (marked red) plus RNDs 10 to 34 of **CHART 2**, switch to **CHART 3** before hem.

FOR SIZE 4: after finishing 2 complete repeats of **CHART 2** (marked red) plus RNDs 10 to 35 of **CHART 2**, switch to **CHART 3** before hem.

FOR SIZE 5: after finishing 2 complete repeats of **CHART 2** (marked red) plus RNDs 11 to 37 of **CHART 2**, switch to **CHART 3** before hem.

Total sts: 224 (224, 280, 280, 336).



NOTE: to add length to the body, you can work one more repeat of CHART 2 or work a longer hem; another option for adding length is to work CHART 4 without the last decrease RNDs.

After finishing CHART 3, SIZES 1, 3 and 5: switch to smaller needles and SIZES 2 and 4: continue with the same needle size used for the body. Work the hem in twisted ribbing: (k tbl, p1) to end of RND (you have 224 (224, 280, 280, 336) sts).

Work 5 cm/2" of hem and BO using the tubular BO method (see Pattern Stitches on Page 4).

SECTION 3: SLEEVES

With larger needles, from the beginning of underarm, pick up and knit 15 (17, 19, 21, 23) sts, pick up and knit 1 st between the underarm sts and the sleeve sts, knit 63 (71, 79, 87, 95) sts from the stitch holder, pick up and knit 1 st between the underarm sts and the sleeve sts (you have 80 (90, 100, 110, 120) sts). PMM for BOR.

Work 5 repeats of CHART 2 for your Size over all sleeve sts.

FOR SIZES 1 and 2: after finishing 3 complete repeats of CHART 2 (marked red), switch to CHART 4 before cuff.

FOR SIZE 3: after finishing 2 complete repeats of CHART 2 (marked red) plus RNDs 10 to 34 of CHART 2, switch to CHART 4 before cuff.

FOR SIZE 4: after finishing 2 complete repeats of CHART 2 (marked red) plus RNDs 10 to 35 of CHART 2, switch to CHART 4 before cuff.

FOR SIZE 5: after finishing 2 complete repeats of CHART 2 (marked red) plus RNDs 11 to 37 of CHART 2, switch to CHART 4 before cuff.

Total sts: 60 (60, 60, 60, 60).

After finishing CHART 4, switch to smaller needles and work 10 cm/4" of cuff in twisted ribbing and BO using the tubular BO method (see Pattern Stitches on Page 4).

Rep for second sleeve.

SECTION 4: BACK NECK INSERT

With smaller needles and RS facing, bend the scalloped edge forward to access the stitches on the WS which run in a straight line parallel to the valley between each scallop, pick up and knit 43 sts from center of right shoulder to center back, PM, pick up and knit 1 st from the very center of the back (the deepest point), PM, pick up and knit 43 sts from the center back to center of left shoulder (87 sts).

Turn work and p to M, SLM, k1, SLM, p to end.

Row 1 (RS): k1, ssk, k to 2 sts before M, k2tog, SLM, p1, SLM, ssk, k to last 3 sts, k2tog, k1 (4 sts decreased, 83 sts).

Row 2 (WS): p1, p2tog, p to M, SLM, k1, SLM, p to last 3 sts, ssp, p1 (2 sts decreased, 81 sts).



Rep Rows 1 and 2 12 times more (9 sts left). Finish the insert as follows:

Row 1 (RS): k1, ssk, k1, SLM, p1, SLM, k1, k2tog, k1 (2 sts decreased, 7 sts left).

Row 2 (WS): p1, p2tog, remove M, k1, remove M, ssp, p1 (2 sts decreased, 5 sts left)

Row 3: k1, sssk, k1 (2 sts decreased, 3 sts left).

Row 4: p3tog, fasten off.

FINISHING

Weave in ends and block to measurements.

The sweater is finished! *#erlaDKsweater*

Should you have any questions, comments or difficulties with my pattern, please contact me: via e-mail: *valyabog@gmail.com*

as well as on Instagram and Ravelry: *@valentinasknits*

Many thanks for grading and technical editing: Josephine Kush *@josephine_kush*

Copyright Valentina Bogdanova, 2024

All rights reserved. It is prohibited to copy or sell this pattern or give or sell this pattern for use by others. It is prohibited to sell items that are knitted from this pattern.

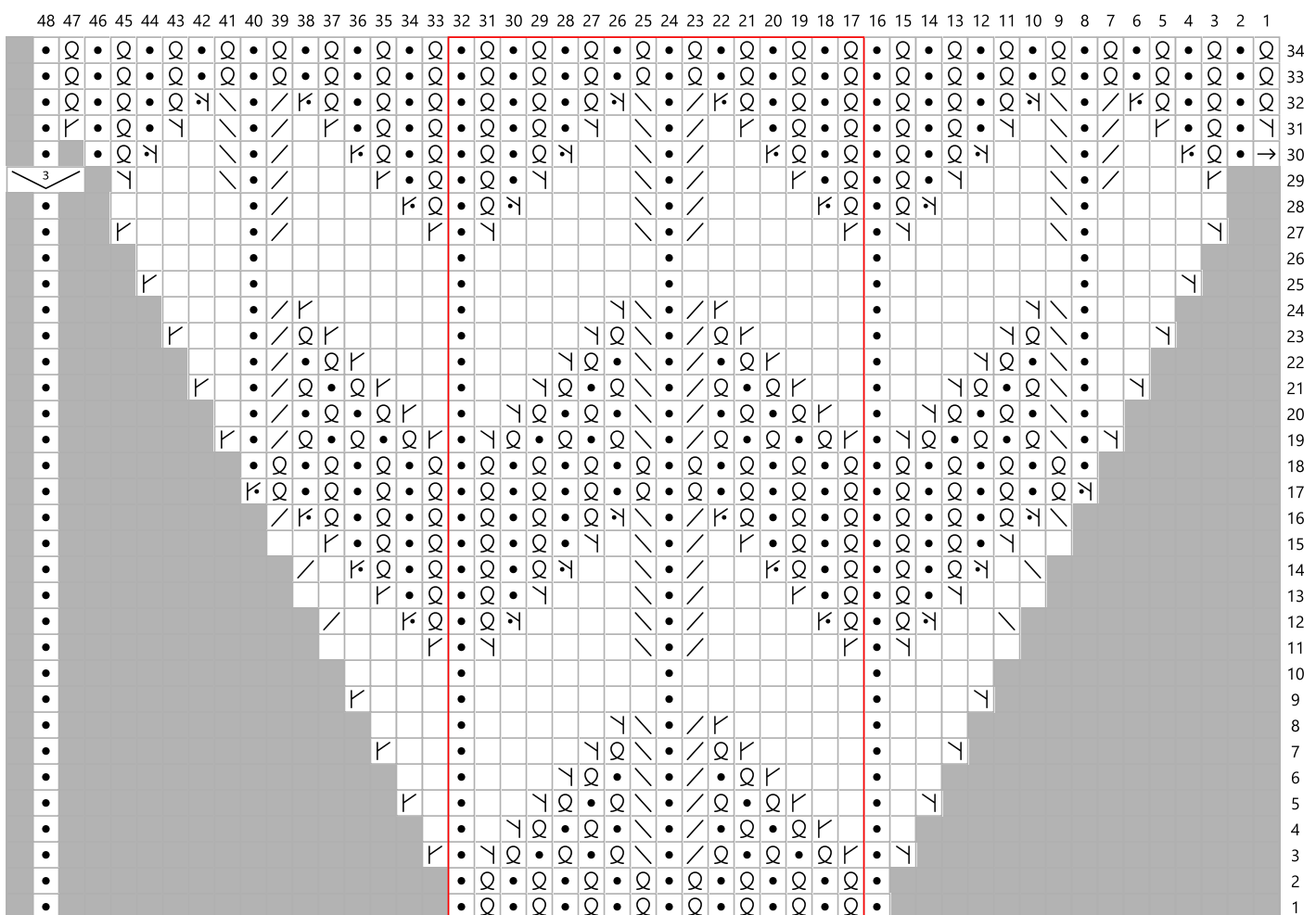


CHARTS AND WRITTEN INSTRUCTIONS:

NOTES for CHART 1:

- You will work 4 repeats of chart per RND, with 3 chart repeats of 16 sts marked in red box within the chart.
- Place CM after each chart repeat (and smaller CM for the chart repeats within the chart) for better tracking.
- Continue with smaller needles. FOR ALL SIZES EXCEPT SIZE 1: SWITCH TO LARGER NEEDLES after RND 19. FOR SIZE 1: Work all RNDs of CHART 1 with smaller needles.
- Make sure that RNDs 1-19 are tighter than the rest of yoke section, i.e. one chart repeat (16 sts) should be approximately 5.5 cm/2.25" wide.
- The CM will help you to follow the chart.
- Work chart from right to left, from bottom up.
- In RND 30, move the BOR marker and all CM 1 st to the right, so that the 1st stitch in RND 30 is worked into the last st of RND 29.

CHART 1 for ALL SIZES



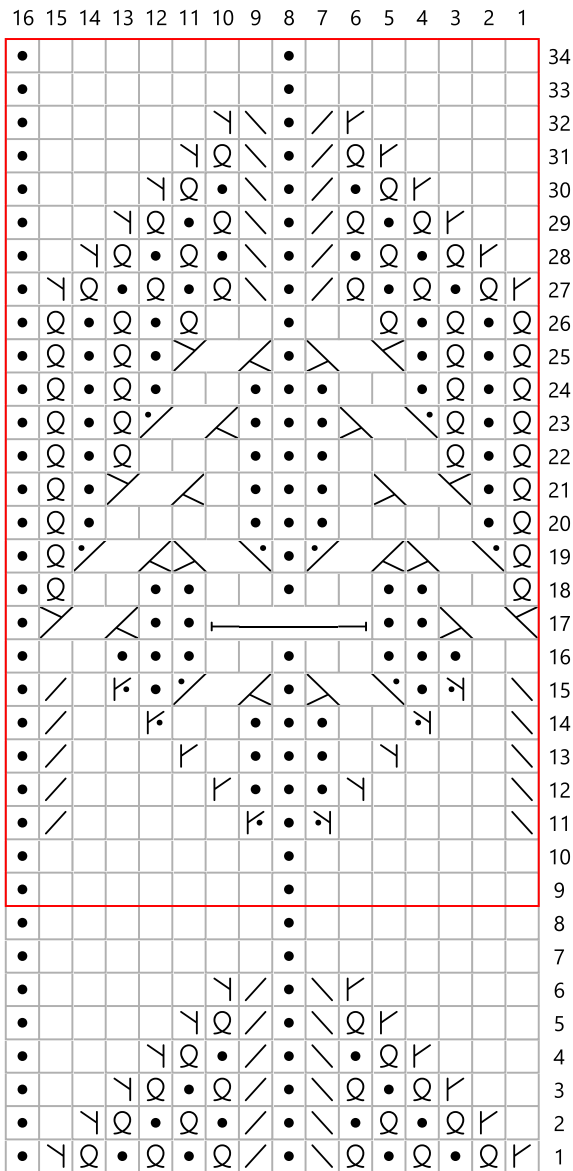
LEGEND

 k
 • p
 Q k2tbl
 Y m1r
 N m1l
 K m1r-p
 N m1l-p
 / k2tog
 \ ssk
 work 3(4) times
 no stitch
→ move marker 1 stitch right
3 p into fbf



CHARTS for SIZE 1:

CHART 2 for SIZE 1



LEGEND

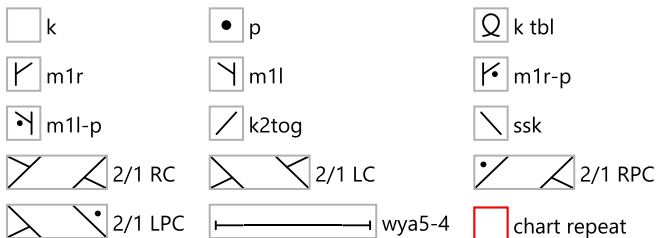
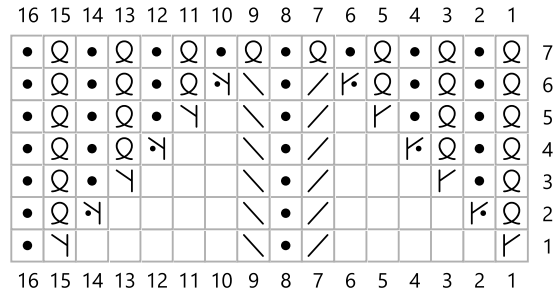


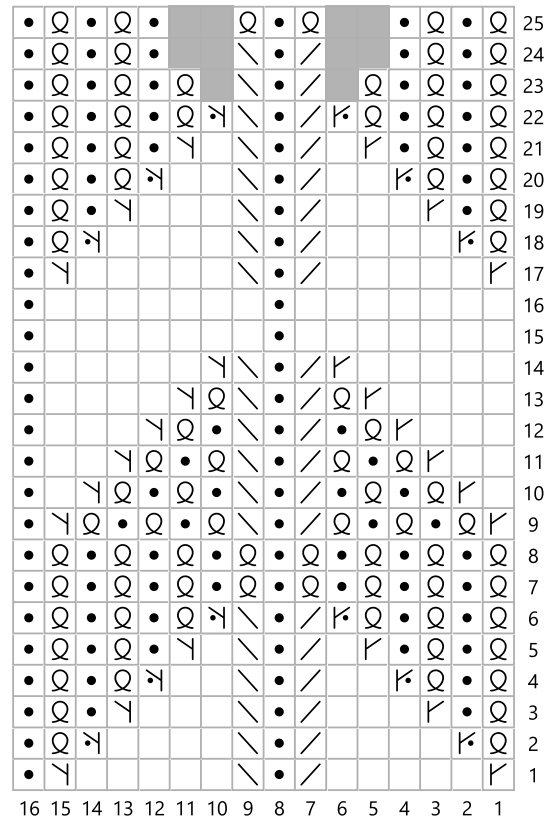
CHART 3 for SIZE 1



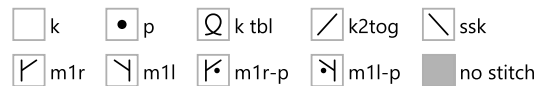
LEGEND



CHART 4 for SIZE 1

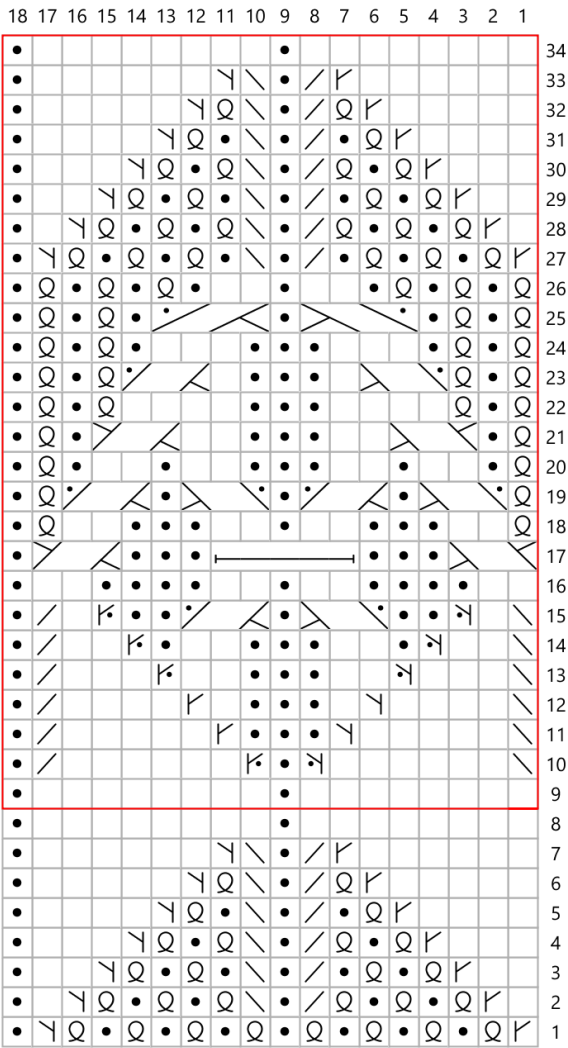


LEGEND



CHARTS for SIZE 2:

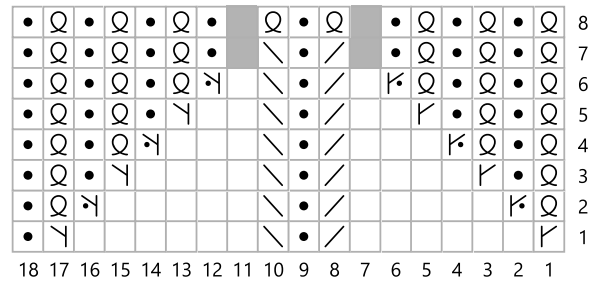
CHART 2 for SIZE 2



LEGEND

- k k
- p p
- Q k tbl
- ┌ m1r
- └ m1l
- ┌┐ m1r-p
- └┘ m1l-p
- / k2tog
- \ ssk
- ↘↗ 2/1 RC
- ↗↘ 2/1 LC
- ↘↗ 2/1 RPC
- ↗↘ 2/1 LPC
- ↘↗ 2/2 RPC
- ↗↘ 2/2 LPC
- wya5-4
- chart repeat

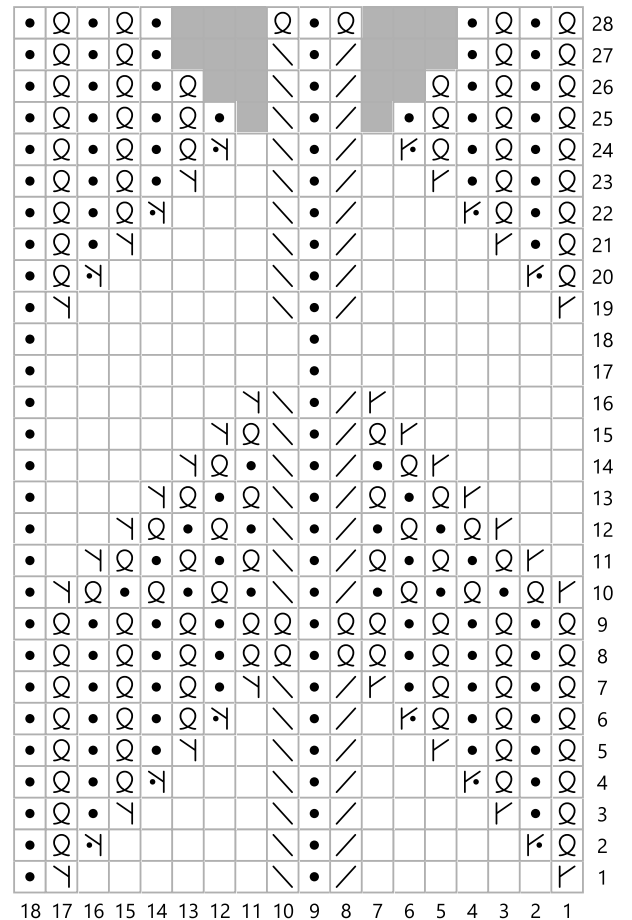
CHART 3 for SIZE 2



LEGEND

- k k
- p p
- Q k tbl
- ┌ m1r
- └ m1l
- ┌┐ m1r-p
- └┘ m1l-p
- no stitch

CHART 4 for SIZE 2



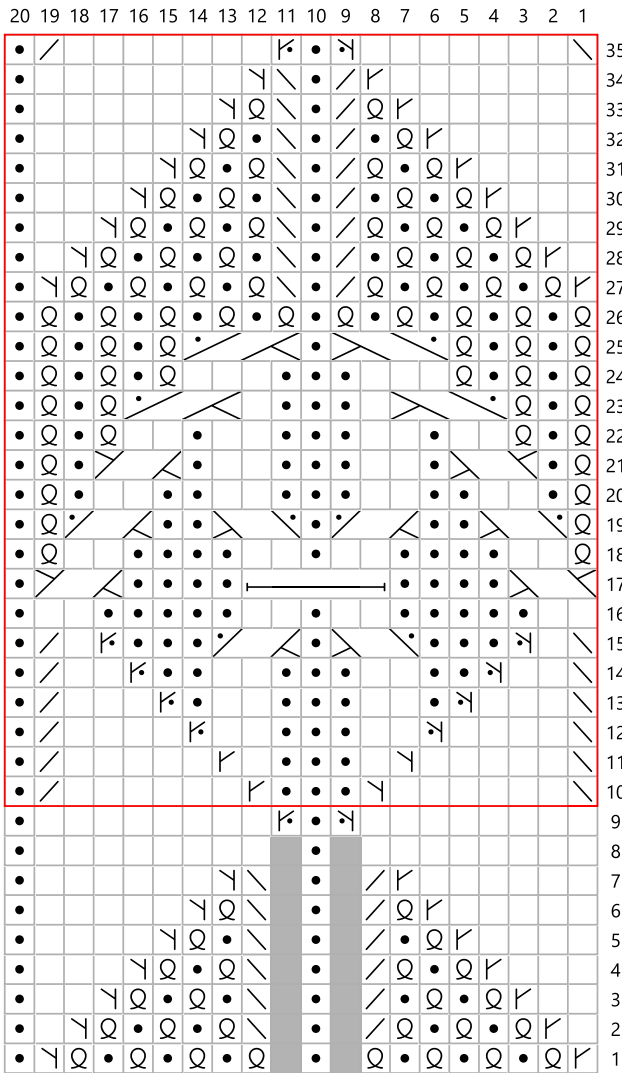
LEGEND

- k k
- p p
- Q k tbl
- ┌ m1r
- └ m1l
- ┌┐ m1r-p
- └┘ m1l-p
- no stitch



CHARTS for SIZE 3:

CHART 2 for SIZE 3



LEGEND

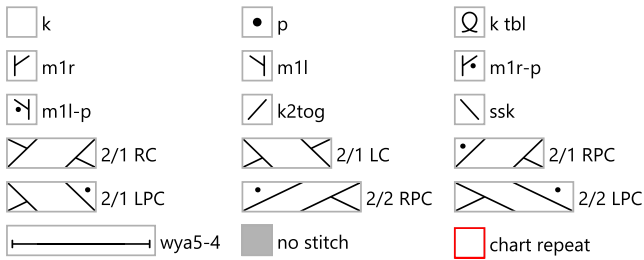
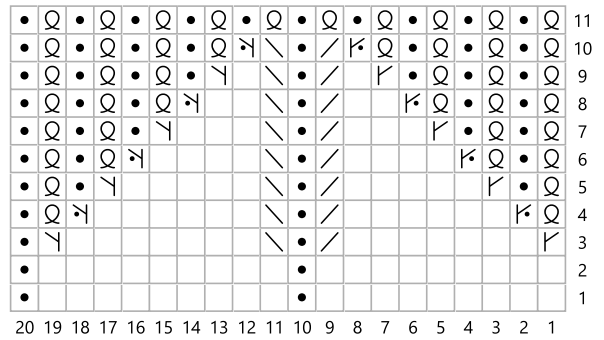


CHART 3 for SIZE 3



LEGEND

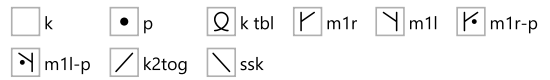
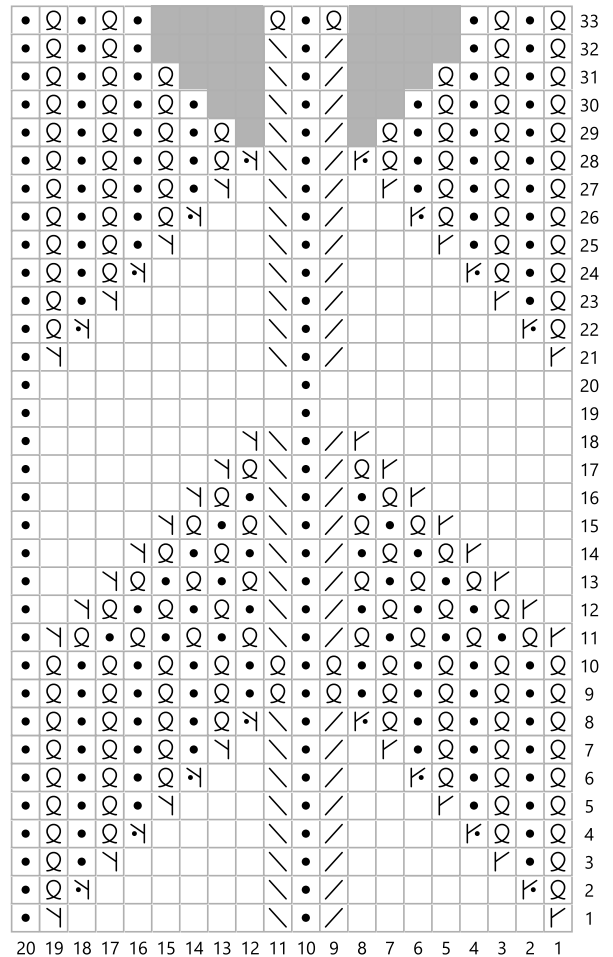


CHART 4 for SIZE 3

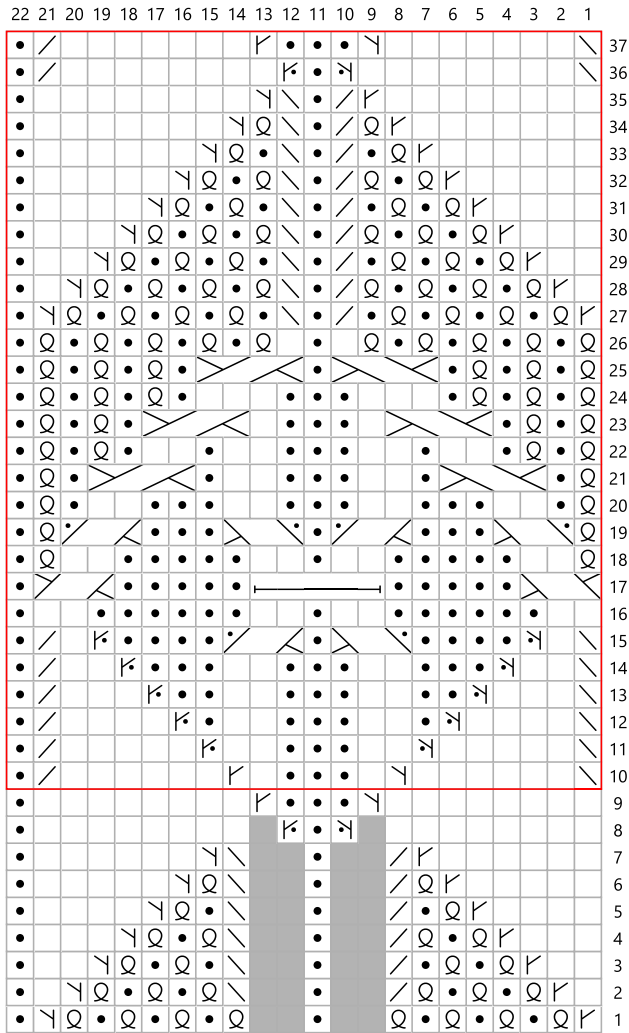


LEGEND



CHARTS for SIZE 4:

CHART 2 for SIZE 4



LEGEND

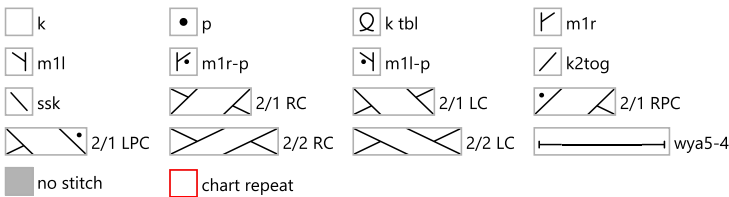
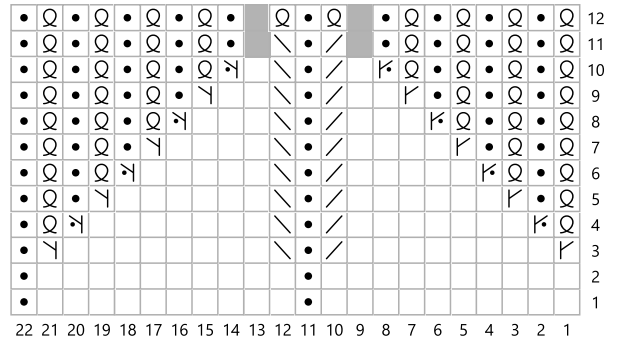


CHART 3 for SIZE 4



LEGEND

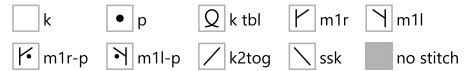
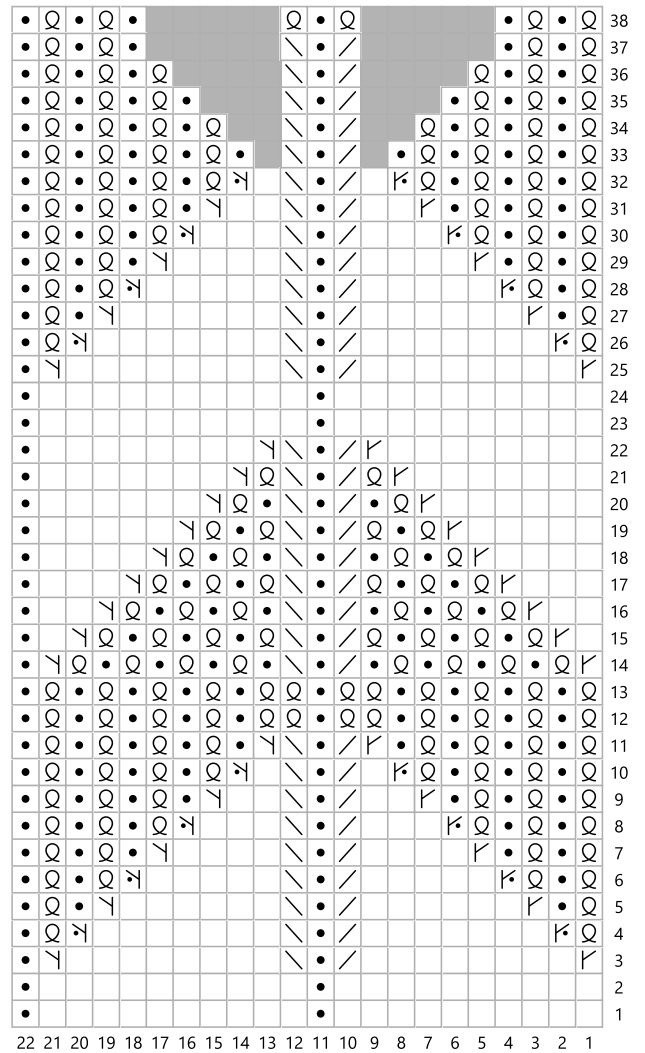
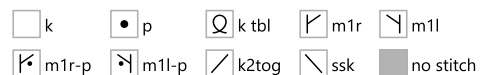


CHART 4 for SIZE 4



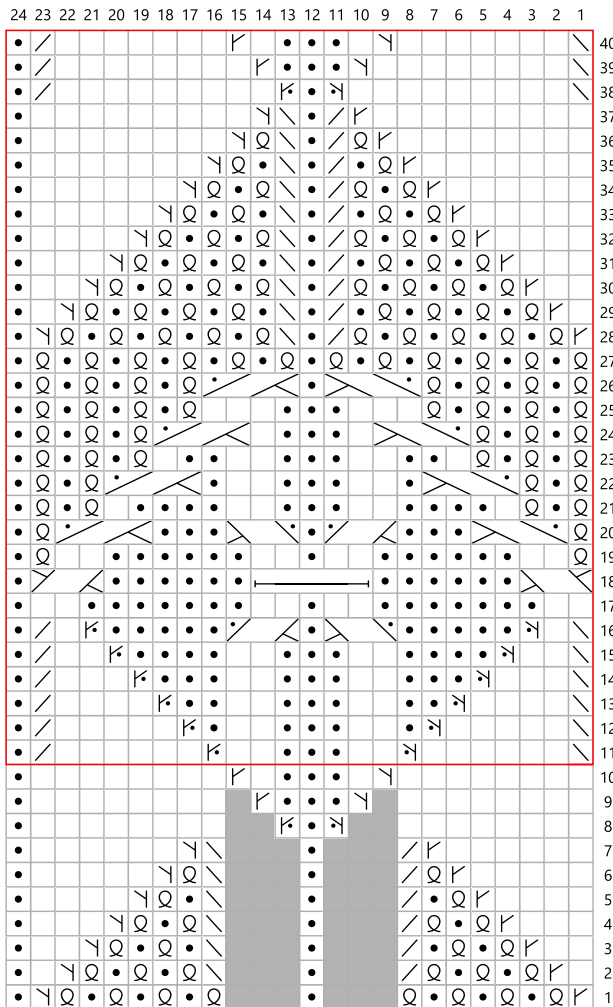
LEGEND



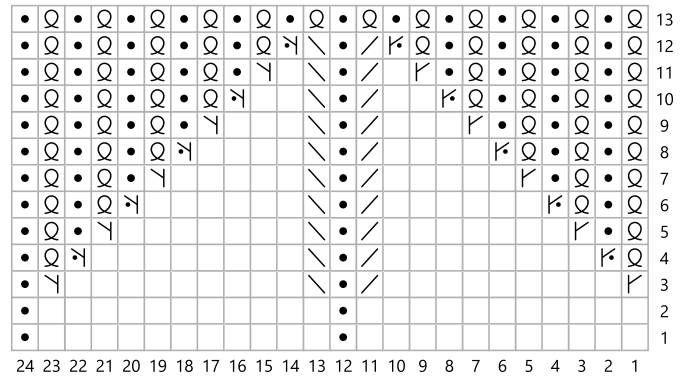
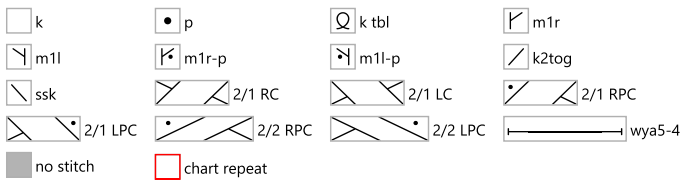
CHARTS for SIZE 5:

CHART 3 for SIZE 5

CHART 2 for SIZE 5



LEGEND



LEGEND

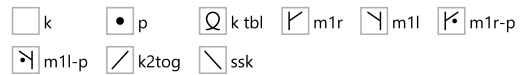
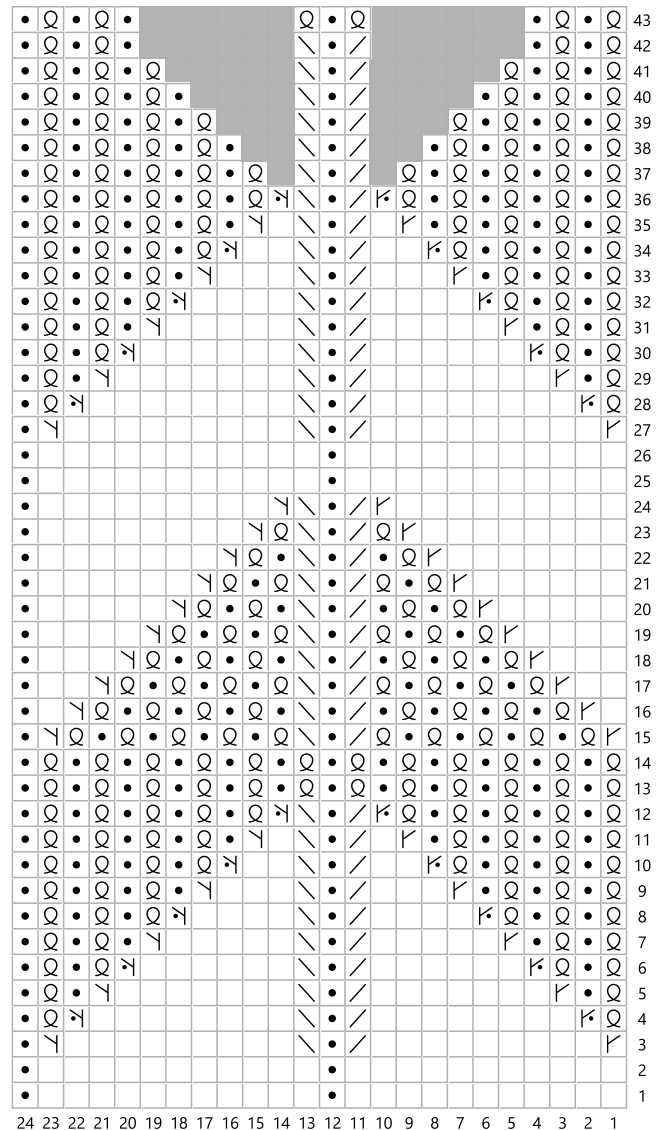


CHART 4 for SIZE 5



LEGEND

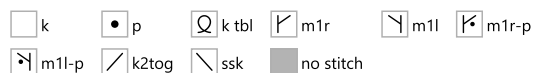


CHART 1 (ALL SIZES) Work with smaller needles.

RNDs 1 - 2: p1, [(k tbl, p1) × 8] 3 times, p1. (50 sts)

RND 3: m1l, p1, [m1r, (k tbl, p1) × 2, k tbl, k2tog, p1, ssk, (k tbl, p1) × 2, k tbl, m1l, p1] 3 times, m1r, p1. (52 sts)

RND 4: k1, p1, [k1, m1r, (k tbl, p1) × 2, k2tog, p1, ssk, (p1, k tbl) × 2, m1l, k1, p1] 3 times, k1, p1.

RND 5: m1l, k1, p1, [k2, m1r, k tbl, p1, k tbl, k2tog, p1, ssk, k tbl, p1, k tbl, m1l, k2, p1] 3 times, k1, m1r, p1. (54 sts)

RND 6: k2, p1, [k3, m1r, k tbl, p1, k2tog, p1, ssk, p1, k tbl, m1l, k3, p1] 3 times, k2, p1.

RND 7: m1l, k2, p1, [k4, m1r, k tbl, k2tog, p1, ssk, k tbl, m1l, k4, p1] 3 times, k2, m1r, p1. (56 sts)

RND 8: k3, p1, [k5, m1r, k2tog, p1, ssk, m1l, k5, p1] 3 times, k3, p1.

RND 9: m1l, k3, p1, [(k7, p1) × 2] 3 times, k3, m1r, p1. (58 sts)

RND 10: k4, p1, [(k7, p1) × 2] 3 times, k4, p1.

RND 11: k4, m1l, p1, [m1r, k5, k2tog, p1, ssk, k5, m1l, p1] 3 times, m1r, k4, p1. (60 sts)

RND 12: ssk, k2, m1l-p, k tbl, p1, [k tbl, m1r-p, k4, k2tog, p1, ssk, k4, m1l-p, k tbl, p1] 3 times, k tbl, m1r-p, k2, k2tog, p1.

RND 13: k3, m1l, p1, k tbl, p1, [k tbl, p1, m1r, k3, k2tog, p1, ssk, k3, m1l, p1, k tbl, p1] 3 times, k tbl, p1, m1r, k3, p1. (62 sts)

RND 14: ssk, k1, m1l-p, (k tbl, p1) × 2, [k tbl, p1, k tbl, m1r-p, k2, k2tog, p1, ssk, k2, m1l-p, (k tbl, p1) × 2] 3 times, k tbl, p1, k tbl, m1r-p, k1, k2tog, p1.

RND 15: k2, m1l, (p1, k tbl) × 2, p1, [(k tbl, p1) × 2, m1r, k1, k2tog, p1, ssk, k1, m1l, (p1, k tbl) × 2, p1] 3 times, (k tbl, p1) × 2, m1r, k2, p1. (64 sts)

RND 16: ssk, m1l-p, (k tbl, p1) × 3, [(k tbl, p1) × 2, k tbl, m1r-p, k2tog, p1, ssk, m1l-p, (k tbl, p1) × 3] 3 times, (k tbl, p1) × 2, k tbl, m1r-p, k2tog, p1.

RND 17: m1l-p, (k tbl, p1) × 4, [(k tbl, p1) × 8] 3 times, (k tbl, p1) × 3, k tbl, m1r-p, p1. (66 sts)

RND 18: (p1, k tbl) × 4, p1, [(k tbl, p1) × 8] 3 times, (k tbl, p1) × 3, k tbl, p2.

RND 19: m1l, p1, ssk, (k tbl, p1) × 2, k tbl, m1l, p1, [m1r, (k tbl, p1) × 2, k tbl, k2tog, p1, ssk, (k tbl, p1) × 2, k tbl, m1l, p1] 3 times, m1r, (k tbl, p1) × 2, k tbl, k2tog, p1, m1r, p1. (68 sts)

FOR ALL SIZES except SIZE 1: Switch to larger needles (SIZE 1: work CHART 1 with smaller needles completely).

RND 20: k1, p1, ssk, (p1, k tbl) × 2, m1l, k1, p1, [k1, m1r, (k tbl, p1) × 2, k2tog, p1, ssk, (p1, k tbl) × 2, m1l, k1, p1] 3 times, k1, m1r, (k tbl, p1) × 2, k2tog, p1, k1, p1.

RND 21: m1l, k1, p1, ssk, k tbl, p1, k tbl, m1l, k2, p1, [k2, m1r, k tbl, p1, k tbl, k2tog, p1, ssk, k tbl, p1, k tbl, m1l, k2, p1] 3 times, k2, m1r, k tbl, p1, k tbl, k2tog, p1, k1, m1r, p1. (70 sts)

RND 22: k2, p1, ssk, p1, k tbl, m1l, k3, p1, [k3, m1r, k tbl, p1, k2tog, p1, ssk, p1, k tbl, m1l, k3, p1] 3 times, k3, m1r, k tbl, p1, k2tog, p1, k2, p1.

RND 23: m1l, k2, p1, ssk, k tbl, m1l, k4, p1, [k4, m1r, k tbl, k2tog, p1, ssk, k tbl, m1l, k4, p1] 3 times, k4, m1r, k tbl, k2tog, p1, k2, m1r, p1. (72 sts)

RND 24: k3, p1, ssk, m1l, k5, p1, [k5, m1r, k2tog, p1, ssk, m1l, k5, p1] 3 times, k5, m1r, k2tog, p1, k3, p1.

RND 25: m1l, k3, p1, k7, p1, [(k7, p1) × 2] 3 times, k7, p1, k3, m1r, p1. (74 sts)

RND 26: k4, p1, k7, p1, [(k7, p1) × 2] 3 times, k7, p1, k4, p1.

RND 27: m1l, k4, p1, ssk, k5, m1l, p1, [m1r, k5, k2tog, p1, ssk, k5, m1l, p1] 3 times, m1r, k5, k2tog, p1, k4, m1r, p1. (76 sts)

RND 28: k5, p1, ssk, k4, m1l-p, k tbl, p1, [k tbl, m1r-p, k4, k2tog, p1, ssk, k4, m1l-p, k tbl, p1] 3 times, k tbl, m1r-p, k4, k2tog, p1, k5, p1.

RND 29: m1r, k3, k2tog, p1, ssk, k3, m1l, p1, k tbl, p1, [k tbl, p1, m1r, k3, k2tog, p1, ssk, k3, m1l, p1, k tbl, p1] 3 times, k tbl, p1, m1r, k3, k2tog, p1, ssk, k3, m1l, p into fbf. (78 sts)

Move the BOR marker and all CM 1 st to the right, so that the 1st stitch in RND 30 is worked into the last st of RND 29.

RND 30: p1, k tbl, m1r-p, k2, k2tog, p1, ssk, k2, m1l-p, (k tbl, p1) × 2, [k tbl, p1, k tbl, m1r-p, k2, k2tog, p1, ssk, k2, m1l-p, (k tbl, p1) × 2] 3 times, k tbl, p1, k tbl, m1r-p, k2, k2tog, p1, ssk, k2, m1l-p, k tbl, p2.

RND 31: m1l, p1, k tbl, p1, m1r, k1, k2tog, p1, ssk, k1, m1l, (p1, k tbl) × 2, p1, [(k tbl, p1) × 2, m1r, k1, k2tog, p1, ssk, k1, m1l, (p1, k tbl) × 2, p1] 3 times, (k tbl, p1) × 2, m1r, k1, k2tog, p1, ssk, k1, m1l, p1, k tbl, p1, m1r, p1. (80 sts)

RND 32: (k tbl, p1) × 2, k tbl, m1r-p, k2tog, p1, ssk, m1l-p, (k tbl, p1) × 3, [(k tbl, p1) × 2, k tbl, m1r-p, k2tog, p1, ssk, m1l-p, (k tbl, p1) × 3] 3 times, (k tbl, p1) × 2, k tbl, m1r-p, k2tog, p1, ssk, m1l-p, (k tbl, p1) × 3.

RNDs 33 - 34: (k tbl, p1) × 8, [(k tbl, p1) × 8] 3 times, (k tbl, p1) × 8.



CHARTS FOR SIZE 1:

CHART 2 for SIZE 1:

Switch to larger needles

RND 1: m1r, (k tbl, p1) × 2, k tbl, ssk, p1, k2tog, (k tbl, p1) × 2, k tbl, m1l, p1. (16 sts)

RND 2: k1, m1r, (k tbl, p1) × 2, ssk, p1, k2tog, (p1, k tbl) × 2, m1l, k1, p1.

RND 3: k2, m1r, k tbl, p1, k tbl, ssk, p1, k2tog, k tbl, p1, k tbl, m1l, k2, p1.

RND 4: k3, m1r, k tbl, p1, ssk, p1, k2tog, p1, k tbl, m1l, k3, p1.

RND 5: k4, m1r, k tbl, ssk, p1, k2tog, k tbl, m1l, k4, p1.

RND 6: k5, m1r, ssk, p1, k2tog, m1l, k5, p1.

RNDs 7 - 10: (k7, p1) × 2.

RND 11: ssk, k5, m1l-p, p1, m1r-p, k5, k2tog, p1.

RND 12: ssk, k4, m1l, p3, m1r, k4, k2tog, p1.

RND 13: ssk, k3, m1l, k1, p3, k1, m1r, k3, k2tog, p1.

RND 14: ssk, k2, m1l-p, k2, p3, k2, m1r-p, k2, k2tog, p1.

RND 15: ssk, k1, m1l-p, p1, 2/1 LPC, p1, 2/1 RPC, p1, m1r-p, k1, k2tog, p1.

RND 16: (k2, p3, k2, p1) × 2.

RND 17: 2/1 LC, p2, wya5-4, p2, 2/1 RC, p1.

RND 18: k tbl, k2, p2, k2, p1, k2, p2, k2, k tbl, p1.

RND 19: k tbl, 2/1 LPC, 2/1 RPC, p1, 2/1 LPC, 2/1 RPC, k tbl, p1.

RND 20: k tbl, p1, k4, p3, k4, p1, k tbl, p1.

RND 21: k tbl, p1, 2/1 LC, k1, p3, k1, 2/1 RC, p1, k tbl, p1.

RND 22: k tbl, p1, k tbl, k3, p3, k3, (k tbl, p1) × 2.

RND 23: k tbl, p1, k tbl, 2/1 LPC, p3, 2/1 RPC, (k tbl, p1) × 2.

RND 24: (k tbl, p1) × 2, k2, p3, k2, (p1, k tbl) × 2, p1.

RND 25: (k tbl, p1) × 2, 2/1 LC, p1, 2/1 RC, (p1, k tbl) × 2, p1.

RND 26: (k tbl, p1) × 2, k tbl, k2, p1, k2, (k tbl, p1) × 3.

RND 27: m1r, (k tbl, p1) × 2, k tbl, k2tog, p1, ssk, (k tbl, p1) × 2, k tbl, m1l, p1.

RND 28: k1, m1r, (k tbl, p1) × 2, k2tog, p1, ssk, (p1, k tbl) × 2, m1l, k1, p1.

RND 29: k2, m1r, k tbl, p1, k tbl, k2tog, p1, ssk, k tbl, p1, k tbl, m1l, k2, p1.

RND 30: k3, m1r, k tbl, p1, k2tog, p1, ssk, p1, k tbl, m1l, k3, p1.

RND 31: k4, m1r, k tbl, k2tog, p1, ssk, k tbl, m1l, k4, p1.

RND 32: k5, m1r, k2tog, p1, ssk, m1l, k5, p1.

RNDs 33 - 34: (k7, p1) × 2.

NEXT CHART REPEAT STARTS WITH RND 9.

CHART 3 for SIZE 1:

RND 1: m1r, k5, k2tog, p1, ssk, k5, m1l, p1. (16 sts)

RND 2: k tbl, m1r-p, k4, k2tog, p1, ssk, k4, m1l-p, k tbl, p1.

RND 3: k tbl, p1, m1r, k3, k2tog, p1, ssk, k3, m1l, p1, k tbl, p1.

RND 4: k tbl, p1, k tbl, m1r-p, k2, k2tog, p1, ssk, k2, m1l-p, (k tbl, p1) × 2.

RND 5: (k tbl, p1) × 2, m1r, k1, k2tog, p1, ssk, k1, m1l, (p1, k tbl) × 2, p1.

RND 6: (k tbl, p1) × 2, k tbl, m1r-p, k2tog, p1, ssk, m1l-p, (k tbl, p1) × 3.

RND 7: (k tbl, p1) × 8.



CHART 4 for SIZE 1:

- RND 1:** m1r, k5, k2tog, p1, ssk, k5, m1l, p1. (16 sts)
- RND 2:** k tbl, m1r-p, k4, k2tog, p1, ssk, k4, m1l-p, k tbl, p1.
- RND 3:** k tbl, p1, m1r, k3, k2tog, p1, ssk, k3, m1l, p1, k tbl, p1.
- RND 4:** k tbl, p1, k tbl, m1r-p, k2, k2tog, p1, ssk, k2, m1l-p, (k tbl, p1) × 2.
- RND 5:** (k tbl, p1) × 2, m1r, k1, k2tog, p1, ssk, k1, m1l, (p1, k tbl) × 2, p1.
- RND 6:** (k tbl, p1) × 2, k tbl, m1r-p, k2tog, p1, ssk, m1l-p, (k tbl, p1) × 3.
- RNDs 7 - 8:** (k tbl, p1) × 8.
- RND 9:** m1r, (k tbl, p1) × 2, k tbl, k2tog, p1, ssk, (k tbl, p1) × 2, k tbl, m1l, p1.
- RND 10:** k1, m1r, (k tbl, p1) × 2, k2tog, p1, ssk, (p1, k tbl) × 2, m1l, k1, p1.
- RND 11:** k2, m1r, k tbl, p1, k tbl, k2tog, p1, ssk, k tbl, p1, k tbl, m1l, k2, p1.
- RND 12:** k3, m1r, k tbl, p1, k2tog, p1, ssk, p1, k tbl, m1l, k3, p1.
- RND 13:** k4, m1r, k tbl, k2tog, p1, ssk, k tbl, m1l, k4, p1.
- RND 14:** k5, m1r, k2tog, p1, ssk, m1l, k5, p1.
- RNDs 15 - 16:** (k7, p1) × 2.
- RND 17:** rep RND 1.
- RND 18:** rep RND 2.
- RND 19:** rep RND 3.
- RND 20:** rep RND 4.
- RND 21:** rep RND 5.
- RND 22:** rep RND 6.
- RND 23:** (k tbl, p1) × 2, k tbl, k2tog, p1, ssk, (k tbl, p1) × 3. (14 sts)
- RND 24:** (k tbl, p1) × 2, k2tog, p1, ssk, (p1, k tbl) × 2, p1. (12 sts)
- RND 25:** (k tbl, p1) × 6.



CHARTS FOR SIZE 2:

CHART 2 for SIZE 2:

- RND 1: m1r, (k tbl, p1) × 7, k tbl, m1l, p1. (18 sts)
RND 2: k1, m1r, (k tbl, p1) × 2, k tbl, k2tog, p1, ssk, (k tbl, p1) × 2, k tbl, m1l, k1, p1.
RND 3: k2, m1r, (k tbl, p1) × 2, k2tog, p1, ssk, (p1, k tbl) × 2, m1l, k2, p1.
RND 4: k3, m1r, k tbl, p1, k tbl, k2tog, p1, ssk, k tbl, p1, k tbl, m1l, k3, p1.
RND 5: k4, m1r, k tbl, p1, k2tog, p1, ssk, p1, k tbl, m1l, k4, p1.
RND 6: k5, m1r, k tbl, k2tog, p1, ssk, k tbl, m1l, k5, p1.
RND 7: k6, m1r, k2tog, p1, ssk, m1l, k6, p1.
RNDs 8 - 9: (k8, p1) × 2.
RND 10: ssk, k6, m1l-p, p1, m1r-p, k6, k2tog, p1.
RND 11: ssk, k5, m1l, p3, m1r, k5, k2tog, p1.
RND 12: ssk, k4, m1l, k1, p3, k1, m1r, k4, k2tog, p1.
RND 13: ssk, k3, m1l-p, k2, p3, k2, m1r-p, k3, k2tog, p1.
RND 14: ssk, k2, m1l-p, p1, k2, p3, k2, p1, m1r-p, k2, k2tog, p1.
RND 15: ssk, k1, m1l-p, p2, 2/1 LPC, p1, 2/1 RPC, p2, m1r-p, k1, k2tog, p1.
RND 16: (k2, p4, k2, p1) × 2.
RND 17: 2/1 LC, p3, wya5-4, p3, 2/1 RC, p1.
RND 18: k tbl, k2, p3, k2, p1, k2, p3, k2, k tbl, p1.
RND 19: k tbl, 2/1 LPC, p1, 2/1 RPC, p1, 2/1 LPC, p1, 2/1 RPC, k tbl, p1.
RND 20: k tbl, (p1, k2) × 2, p3, (k2, p1) × 2, k tbl, p1.
RND 21: k tbl, p1, 2/1 LC, k2, p3, k2, 2/1 RC, p1, k tbl, p1.
RND 22: k tbl, p1, k tbl, k4, p3, k4, (k tbl, p1) × 2.
RND 23: k tbl, p1, k tbl, 2/1 LPC, k1, p3, k1, 2/1 RPC, (k tbl, p1) × 2.
RND 24: (k tbl, p1) × 2, k3, p3, k3, (p1, k tbl) × 2, p1.
RND 25: (k tbl, p1) × 2, 2/2 LPC, p1, 2/2 RPC, (p1, k tbl) × 2, p1.
RND 26: (k tbl, p1) × 3, k2, p1, k2, (p1, k tbl) × 3, p1.
RND 27: m1r, (k tbl, p1) × 3, k2tog, p1, ssk, (p1, k tbl) × 3, m1l, p1.
RND 28: rep RND 2.
RND 29: rep RND 3.
RND 30: rep RND 4.
RND 31: rep RND 5.
RND 32: rep RND 6.
RND 33: rep RND 7.
RND 34: rep RND 8.

NEXT CHART REPEAT STARTS WITH RND 9.

CHART 3 for SIZE 2:

- RND 1: m1r, k6, k2tog, p1, ssk, k6, m1l, p1. (18 sts)
RND 2: k tbl, m1r-p, k5, k2tog, p1, ssk, k5, m1l-p, k tbl, p1.
RND 3: k tbl, p1, m1r, k4, k2tog, p1, ssk, k4, m1l, p1, k tbl, p1.
RND 4: k tbl, p1, k tbl, m1r-p, k3, k2tog, p1, ssk, k3, m1l-p, (k tbl, p1) × 2.
RND 5: (k tbl, p1) × 2, m1r, k2, k2tog, p1, ssk, k2, m1l, (p1, k tbl) × 2, p1.
RND 6: (k tbl, p1) × 2, k tbl, m1r-p, k1, k2tog, p1, ssk, k1, m1l-p, (k tbl, p1) × 3.
RND 7: (k tbl, p1) × 3, k2tog, p1, ssk, (p1, k tbl) × 3, p1. (16 sts)
RND 8: (k tbl, p1) × 8.

CHART 4 for SIZE 2:

- RND 1: m1r, k6, k2tog, p1, ssk, k6, m1l, p1. (18 sts)



RND 2: k tbl, m1r-p, k5, k2tog, p1, ssk, k5, m1l-p, k tbl, p1.
RND 3: k tbl, p1, m1r, k4, k2tog, p1, ssk, k4, m1l, p1, k tbl, p1.
RND 4: k tbl, p1, k tbl, m1r-p, k3, k2tog, p1, ssk, k3, m1l-p, (k tbl, p1) × 2.
RND 5: (k tbl, p1) × 2, m1r, k2, k2tog, p1, ssk, k2, m1l, (p1, k tbl) × 2, p1.
RND 6: (k tbl, p1) × 2, k tbl, m1r-p, k1, k2tog, p1, ssk, k1, m1l-p, (k tbl, p1) × 3.
RND 7: (k tbl, p1) × 3, m1r, k2tog, p1, ssk, m1l, (p1, k tbl) × 3, p1.
RNDs 8 - 9: (k tbl, p1) × 3, k tbl × 2, p1, k tbl × 2, (p1, k tbl) × 3, p1.
RND 10: m1r, (k tbl, p1) × 3, k2tog, p1, ssk, (p1, k tbl) × 3, m1l, p1.
RND 11: k1, m1r, (k tbl, p1) × 2, k tbl, k2tog, p1, ssk, (k tbl, p1) × 2, k tbl, m1l, k1, p1.
RND 12: k2, m1r, (k tbl, p1) × 2, k2tog, p1, ssk, (p1, k tbl) × 2, m1l, k2, p1.
RND 13: k3, m1r, k tbl, p1, k tbl, k2tog, p1, ssk, k tbl, p1, k tbl, m1l, k3, p1.
RND 14: k4, m1r, k tbl, p1, k2tog, p1, ssk, p1, k tbl, m1l, k4, p1.
RND 15: k5, m1r, k tbl, k2tog, p1, ssk, k tbl, m1l, k5, p1.
RND 16: k6, m1r, k2tog, p1, ssk, m1l, k6, p1.
RNDs 17 - 18: (k8, p1) × 2.
RND 19: rep RND 1.
RND 20: rep RND 2.
RND 21: rep RND 3.
RND 22: rep RND 4.
RND 23: rep RND 5.
RND 24: rep RND 6.
RND 25: (k tbl, p1) × 3, k2tog, p1, ssk, (p1, k tbl) × 3, p1. (16 sts)
RND 26: (k tbl, p1) × 2, k tbl, k2tog, p1, ssk, (k tbl, p1) × 3. (14 sts)
RND 27: (k tbl, p1) × 2, k2tog, p1, ssk, (p1, k tbl) × 2, p1. (12 sts)
RND 28: (k tbl, p1) × 6.



CHARTS FOR SIZE 3:

CHART 2 for SIZE 3:

- RND 1: m1r, (k tbl, p1) × 7, k tbl, m1l, p1. (18 sts)
RND 2: k1, m1r, (k tbl, p1) × 2, k tbl, k2tog, p1, ssk, (k tbl, p1) × 2, k tbl, m1l, k1, p1.
RND 3: k2, m1r, (k tbl, p1) × 2, k2tog, p1, ssk, (p1, k tbl) × 2, m1l, k2, p1.
RND 4: k3, m1r, k tbl, p1, k tbl, k2tog, p1, ssk, k tbl, p1, k tbl, m1l, k3, p1.
RND 5: k4, m1r, k tbl, p1, k2tog, p1, ssk, p1, k tbl, m1l, k4, p1.
RND 6: k5, m1r, k tbl, k2tog, p1, ssk, k tbl, m1l, k5, p1.
RND 7: k6, m1r, k2tog, p1, ssk, m1l, k6, p1.
RND 8: (k8, p1) × 2.
RND 9: k8, m1l-p, p1, m1r-p, k8, p1. (20 sts)
RND 10: ssk, k6, m1l, p3, m1r, k6, k2tog, p1.
RND 11: ssk, k5, m1l, k1, p3, k1, m1r, k5, k2tog, p1.
RND 12: ssk, k4, m1l-p, k2, p3, k2, m1r-p, k4, k2tog, p1.
RND 13: ssk, k3, m1l-p, p1, k2, p3, k2, p1, m1r-p, k3, k2tog, p1.
RND 14: ssk, k2, m1l-p, p2, k2, p3, k2, p2, m1r-p, k2, k2tog, p1.
RND 15: ssk, k1, m1l-p, p3, 2/1 LPC, p1, 2/1 RPC, p3, m1r-p, k1, k2tog, p1.
RND 16: (k2, p5, k2, p1) × 2.
RND 17: 2/1 LC, p4, wya5-4, p4, 2/1 RC, p1.
RND 18: k tbl, k2, p4, k2, p1, k2, p4, k2, k tbl, p1.
RND 19: k tbl, 2/1 LPC, p2, 2/1 RPC, p1, 2/1 LPC, p2, 2/1 RPC, k tbl, p1.
RND 20: k tbl, p1, k2, p2, k2, p3, k2, p2, k2, p1, k tbl, p1.
RND 21: k tbl, p1, 2/1 LC, p1, k2, p3, k2, p1, 2/1 RC, p1, k tbl, p1.
RND 22: k tbl, p1, k tbl, k2, p1, k2, p3, k2, p1, k2, (k tbl, p1) × 2.
RND 23: k tbl, p1, k tbl, 2/2 LPC, k1, p3, k1, 2/2 RPC, (k tbl, p1) × 2.
RND 24: (k tbl, p1) × 2, k tbl, k3, p3, k3, (k tbl, p1) × 3.
RND 25: (k tbl, p1) × 2, k tbl, 2/2 LPC, p1, 2/2 RPC, (k tbl, p1) × 3.
RND 26: (k tbl, p1) × 10.
RND 27: m1r, (k tbl, p1) × 3, k tbl, k2tog, p1, ssk, (k tbl, p1) × 3, k tbl, m1l, p1.
RND 28: k1, m1r, (k tbl, p1) × 3, k2tog, p1, ssk, (p1, k tbl) × 3, m1l, k1, p1.
RND 29: k2, m1r, (k tbl, p1) × 2, k tbl, k2tog, p1, ssk, (k tbl, p1) × 2, k tbl, m1l, k2, p1.
RND 30: k3, m1r, (k tbl, p1) × 2, k2tog, p1, ssk, (p1, k tbl) × 2, m1l, k3, p1.
RND 31: k4, m1r, k tbl, p1, k tbl, k2tog, p1, ssk, k tbl, p1, k tbl, m1l, k4, p1.
RND 32: k5, m1r, k tbl, p1, k2tog, p1, ssk, p1, k tbl, m1l, k5, p1.
RND 33: k6, m1r, k tbl, k2tog, p1, ssk, k tbl, m1l, k6, p1.
RND 34: k7, m1r, k2tog, p1, ssk, m1l, k7, p1.
RND 35: ssk, k7, m1l-p, p1, m1r-p, k7, k2tog, p1.

NEXT CHART REPEAT STARTS WITH RND 10.

CHART 3 for SIZE 3:

- RNDs 1 - 2: (k9, p1) × 2. (20 sts)
RND 3: m1r, k7, k2tog, p1, ssk, k7, m1l, p1.
RND 4: k tbl, m1r-p, k6, k2tog, p1, ssk, k6, m1l-p, k tbl, p1.
RND 5: k tbl, p1, m1r, k5, k2tog, p1, ssk, k5, m1l, p1, k tbl, p1.
RND 6: k tbl, p1, k tbl, m1r-p, k4, k2tog, p1, ssk, k4, m1l-p, (k tbl, p1) × 2.
RND 7: (k tbl, p1) × 2, m1r, k3, k2tog, p1, ssk, k3, m1l, (p1, k tbl) × 2, p1.
RND 8: (k tbl, p1) × 2, k tbl, m1r-p, k2, k2tog, p1, ssk, k2, m1l-p, (k tbl, p1) × 3.



RND 9: (k tbl, p1) × 3, m1r, k1, k2tog, p1, ssk, k1, m1l, (p1, k tbl) × 3, p1.

RND 10: (k tbl, p1) × 3, k tbl, m1r-p, k2tog, p1, ssk, m1l-p, (k tbl, p1) × 4.

RND 11: (k tbl, p1) × 10.

CHART 4 for SIZE 3:

RND 1: m1r, k7, k2tog, p1, ssk, k7, m1l, p1. (20 sts)

RND 2: k tbl, m1r-p, k6, k2tog, p1, ssk, k6, m1l-p, k tbl, p1.

RND 3: k tbl, p1, m1r, k5, k2tog, p1, ssk, k5, m1l, p1, k tbl, p1.

RND 4: k tbl, p1, k tbl, m1r-p, k4, k2tog, p1, ssk, k4, m1l-p, (k tbl, p1) × 2.

RND 5: (k tbl, p1) × 2, m1r, k3, k2tog, p1, ssk, k3, m1l, (p1, k tbl) × 2, p1.

RND 6: (k tbl, p1) × 2, k tbl, m1r-p, k2, k2tog, p1, ssk, k2, m1l-p, (k tbl, p1) × 3.

RND 7: (k tbl, p1) × 3, m1r, k1, k2tog, p1, ssk, k1, m1l, (p1, k tbl) × 3, p1.

RND 8: (k tbl, p1) × 3, k tbl, m1r-p, k2tog, p1, ssk, m1l-p, (k tbl, p1) × 4.

RNDs 9 - 10: (k tbl, p1) × 10.

RND 11: m1r, (k tbl, p1) × 3, k tbl, k2tog, p1, ssk, (k tbl, p1) × 3, k tbl, m1l, p1.

RND 12: k1, m1r, (k tbl, p1) × 3, k2tog, p1, ssk, (p1, k tbl) × 3, m1l, k1, p1.

RND 13: k2, m1r, (k tbl, p1) × 2, k tbl, k2tog, p1, ssk, (k tbl, p1) × 2, k tbl, m1l, k2, p1.

RND 14: k3, m1r, (k tbl, p1) × 2, k2tog, p1, ssk, (p1, k tbl) × 2, m1l, k3, p1.

RND 15: k4, m1r, k tbl, p1, k tbl, k2tog, p1, ssk, k tbl, p1, k tbl, m1l, k4, p1.

RND 16: k5, m1r, k tbl, p1, k2tog, p1, ssk, p1, k tbl, m1l, k5, p1.

RND 17: k6, m1r, k tbl, k2tog, p1, ssk, k tbl, m1l, k6, p1.

RND 18: k7, m1r, k2tog, p1, ssk, m1l, k7, p1.

RNDs 19 - 20: (k9, p1) × 2.

RND 21: rep RND 1.

RND 22: rep RND 2.

RND 23: rep RND 3.

RND 24: rep RND 4.

RND 25: rep RND 5.

RND 26: rep RND 6.

RND 27: rep RND 7.

RND 28: rep RND 8.

RND 29: (k tbl, p1) × 3, k tbl, k2tog, p1, ssk, (k tbl, p1) × 4. (18 sts)

RND 30: (k tbl, p1) × 3, k2tog, p1, ssk, (p1, k tbl) × 3, p1. (16 sts)

RND 31: (k tbl, p1) × 2, k tbl, k2tog, p1, ssk, (k tbl, p1) × 3. (14 sts)

RND 32: (k tbl, p1) × 2, k2tog, p1, ssk, (p1, k tbl) × 2, p1. (12 sts)

RND 33: (k tbl, p1) × 6.



CHARTS FOR SIZE 4:

CHART 2 for SIZE 4:

- RND 1: m1r, (k tbl, p1) × 7, k tbl, m1l, p1. (18 sts)
RND 2: k1, m1r, (k tbl, p1) × 2, k tbl, k2tog, p1, ssk, (k tbl, p1) × 2, k tbl, m1l, k1, p1.
RND 3: k2, m1r, (k tbl, p1) × 2, k2tog, p1, ssk, (p1, k tbl) × 2, m1l, k2, p1.
RND 4: k3, m1r, k tbl, p1, k tbl, k2tog, p1, ssk, k tbl, p1, k tbl, m1l, k3, p1.
RND 5: k4, m1r, k tbl, p1, k2tog, p1, ssk, p1, k tbl, m1l, k4, p1.
RND 6: k5, m1r, k tbl, k2tog, p1, ssk, k tbl, m1l, k5, p1.
RND 7: k6, m1r, k2tog, p1, ssk, m1l, k6, p1.
RND 8: k8, m1l-p, p1, m1r-p, k8, p1. (20 sts)
RND 9: k8, m1l, p3, m1r, k8, p1. (22 sts)
RND 10: ssk, k6, m1l, k1, p3, k1, m1r, k6, k2tog, p1.
RND 11: ssk, k5, m1l-p, k2, p3, k2, m1r-p, k5, k2tog, p1.
RND 12: ssk, k4, m1l-p, p1, k2, p3, k2, p1, m1r-p, k4, k2tog, p1.
RND 13: ssk, k3, m1l-p, p2, k2, p3, k2, p2, m1r-p, k3, k2tog, p1.
RND 14: ssk, k2, m1l-p, (p3, k2) × 2, p3, m1r-p, k2, k2tog, p1.
RND 15: ssk, k1, m1l-p, p4, 2/1 LPC, p1, 2/1 RPC, p4, m1r-p, k1, k2tog, p1.
RND 16: (k2, p6, k2, p1) × 2.
RND 17: 2/1 LC, p5, wya5-4, p5, 2/1 RC, p1.
RND 18: k tbl, k2, p5, k2, p1, k2, p5, k2, k tbl, p1.
RND 19: k tbl, 2/1 LPC, p3, 2/1 RPC, p1, 2/1 LPC, p3, 2/1 RPC, k tbl, p1.
RND 20: k tbl, p1, (k2, p3) × 3, k2, p1, k tbl, p1.
RND 21: k tbl, p1, 2/2 LC, p1, k2, p3, k2, p1, 2/2 RC, p1, k tbl, p1.
RND 22: (k tbl, p1) × 2, k2, p1, k2, p3, (k2, p1) × 2, (k tbl, p1) × 2.
RND 23: (k tbl, p1) × 2, 2/2 LC, k1, p3, k1, 2/2 RC, (p1, k tbl) × 2, p1.
RND 24: (k tbl, p1) × 3, k3, p3, k3, (p1, k tbl) × 3, p1.
RND 25: (k tbl, p1) × 3, 2/2 LC, p1, 2/2 RC, (p1, k tbl) × 3, p1.
RND 26: (k tbl, p1) × 4, k tbl, k1, p1, k1, (k tbl, p1) × 5.
RND 27: m1r, (k tbl, p1) × 4, k2tog, p1, ssk, (p1, k tbl) × 4, m1l, p1.
RND 28: k1, m1r, (k tbl, p1) × 3, k tbl, k2tog, p1, ssk, (k tbl, p1) × 3, k tbl, m1l, k1, p1.
RND 29: k2, m1r, (k tbl, p1) × 3, k2tog, p1, ssk, (p1, k tbl) × 3, m1l, k2, p1.
RND 30: k3, m1r, (k tbl, p1) × 2, k tbl, k2tog, p1, ssk, (k tbl, p1) × 2, k tbl, m1l, k3, p1.
RND 31: k4, m1r, (k tbl, p1) × 2, k2tog, p1, ssk, (p1, k tbl) × 2, m1l, k4, p1.
RND 32: k5, m1r, k tbl, p1, k tbl, k2tog, p1, ssk, k tbl, p1, k tbl, m1l, k5, p1.
RND 33: k6, m1r, k tbl, p1, k2tog, p1, ssk, p1, k tbl, m1l, k6, p1.
RND 34: k7, m1r, k tbl, k2tog, p1, ssk, k tbl, m1l, k7, p1.
RND 35: k8, m1r, k2tog, p1, ssk, m1l, k8, p1.
RND 36: ssk, k8, m1l-p, p1, m1r-p, k8, k2tog, p1.
RND 37: ssk, k7, m1l, p3, m1r, k7, k2tog, p1.

NEXT CHART REPEAT STARTS WITH RND 10.

CHART 3 for SIZE 4:

- RNDs 1 - 2: (k10, p1) × 2. (22 sts)
RND 3: m1r, k8, k2tog, p1, ssk, k8, m1l, p1.
RND 4: k tbl, m1r-p, k7, k2tog, p1, ssk, k7, m1l-p, k tbl, p1.
RND 5: k tbl, p1, m1r, k6, k2tog, p1, ssk, k6, m1l, p1, k tbl, p1.
RND 6: k tbl, p1, k tbl, m1r-p, k5, k2tog, p1, ssk, k5, m1l-p, (k tbl, p1) × 2.
RND 7: (k tbl, p1) × 2, m1r, k4, k2tog, p1, ssk, k4, m1l, (p1, k tbl) × 2, p1.



RND 8: (k tbl, p1) × 2, k tbl, m1r-p, k3, k2tog, p1, ssk, k3, m1l-p, (k tbl, p1) × 3.
RND 9: (k tbl, p1) × 3, m1r, k2, k2tog, p1, ssk, k2, m1l, (p1, k tbl) × 3, p1.
RND 10: (k tbl, p1) × 3, k tbl, m1r-p, k1, k2tog, p1, ssk, k1, m1l-p, (k tbl, p1) × 4.
RND 11: (k tbl, p1) × 4, k2tog, p1, ssk, (p1, k tbl) × 4, p1. (20 sts)
RND 12: (k tbl, p1) × 10.

CHART 4 for SIZE 4:

RNDs 1 - 2: (k10, p1) × 2. (22 sts)
RND 3: m1r, k8, k2tog, p1, ssk, k8, m1l, p1.
RND 4: k tbl, m1r-p, k7, k2tog, p1, ssk, k7, m1l-p, k tbl, p1.
RND 5: k tbl, p1, m1r, k6, k2tog, p1, ssk, k6, m1l, p1, k tbl, p1.
RND 6: k tbl, p1, k tbl, m1r-p, k5, k2tog, p1, ssk, k5, m1l-p, (k tbl, p1) × 2.
RND 7: (k tbl, p1) × 2, m1r, k4, k2tog, p1, ssk, k4, m1l, (p1, k tbl) × 2, p1.
RND 8: (k tbl, p1) × 2, k tbl, m1r-p, k3, k2tog, p1, ssk, k3, m1l-p, (k tbl, p1) × 3.
RND 9: (k tbl, p1) × 3, m1r, k2, k2tog, p1, ssk, k2, m1l, (p1, k tbl) × 3, p1.
RND 10: (k tbl, p1) × 3, k tbl, m1r-p, k1, k2tog, p1, ssk, k1, m1l-p, (k tbl, p1) × 4.
RND 11: (k tbl, p1) × 4, m1r, k2tog, p1, ssk, m1l, (p1, k tbl) × 4, p1.
RNDs 12 - 13: (k tbl, p1) × 4, k tbl × 2, p1, k tbl × 2, (p1, k tbl) × 4, p1.
RND 14: m1r, (k tbl, p1) × 4, k2tog, p1, ssk, (p1, k tbl) × 4, m1l, p1.
RND 15: k1, m1r, (k tbl, p1) × 3, k tbl, k2tog, p1, ssk, (k tbl, p1) × 3, k tbl, m1l, k1, p1.
RND 16: k2, m1r, (k tbl, p1) × 3, k2tog, p1, ssk, (p1, k tbl) × 3, m1l, k2, p1.
RND 17: k3, m1r, (k tbl, p1) × 2, k tbl, k2tog, p1, ssk, (k tbl, p1) × 2, k tbl, m1l, k3, p1.
RND 18: k4, m1r, (k tbl, p1) × 2, k2tog, p1, ssk, (p1, k tbl) × 2, m1l, k4, p1.
RND 19: k5, m1r, k tbl, p1, k tbl, k2tog, p1, ssk, k tbl, p1, k tbl, m1l, k5, p1.
RND 20: k6, m1r, k tbl, p1, k2tog, p1, ssk, p1, k tbl, m1l, k6, p1.
RND 21: k7, m1r, k tbl, k2tog, p1, ssk, k tbl, m1l, k7, p1.
RND 22: k8, m1r, k2tog, p1, ssk, m1l, k8, p1.
RNDs 23 - 24: (k10, p1) × 2.
RND 25: rep RND 3.
RND 26: rep RND 4.
RND 27: rep RND 5.
RND 28: rep RND 6.
RND 29: rep RND 7.
RND 30: rep RND 8.
RND 31: rep RND 9.
RND 32: rep RND 10.
RND 33: (k tbl, p1) × 4, k2tog, p1, ssk, (p1, k tbl) × 4, p1. (20 sts)
RND 34: (k tbl, p1) × 3, k tbl, k2tog, p1, ssk, (k tbl, p1) × 4. (18 sts)
RND 35: (k tbl, p1) × 3, k2tog, p1, ssk, (p1, k tbl) × 3, p1. (16 sts)
RND 36: (k tbl, p1) × 2, k tbl, k2tog, p1, ssk, (k tbl, p1) × 3. (14 sts)
RND 37: (k tbl, p1) × 2, k2tog, p1, ssk, (p1, k tbl) × 2, p1. (12 sts)
RND 38: (k tbl, p1) × 6.



CHARTS FOR SIZE 5:

CHART 2 for SIZE 5:

- RND 1: m1r, (k tbl, p1) × 7, k tbl, m1l, p1. (18 sts)
RND 2: k1, m1r, (k tbl, p1) × 2, k tbl, k2tog, p1, ssk, (k tbl, p1) × 2, k tbl, m1l, k1, p1.
RND 3: k2, m1r, (k tbl, p1) × 2, k2tog, p1, ssk, (p1, k tbl) × 2, m1l, k2, p1.
RND 4: k3, m1r, k tbl, p1, k tbl, k2tog, p1, ssk, k tbl, p1, k tbl, m1l, k3, p1.
RND 5: k4, m1r, k tbl, p1, k2tog, p1, ssk, p1, k tbl, m1l, k4, p1.
RND 6: k5, m1r, k tbl, k2tog, p1, ssk, k tbl, m1l, k5, p1.
RND 7: k6, m1r, k2tog, p1, ssk, m1l, k6, p1.
RND 8: k8, m1l-p, p1, m1r-p, k8, p1. (20 sts)
RND 9: k8, m1l, p3, m1r, k8, p1. (22 sts)
RND 10: k8, m1l, k1, p3, k1, m1r, k8, p1. (24 sts)
RND 11: ssk, k6, m1l-p, k2, p3, k2, m1r-p, k6, k2tog, p1.
RND 12: ssk, k5, m1l-p, p1, k2, p3, k2, p1, m1r-p, k5, k2tog, p1.
RND 13: ssk, k4, m1l-p, p2, k2, p3, k2, p2, m1r-p, k4, k2tog, p1.
RND 14: ssk, k3, m1l-p, (p3, k2) × 2, p3, m1r-p, k3, k2tog, p1.
RND 15: ssk, k2, m1l-p, p4, k2, p3, k2, p4, m1r-p, k2, k2tog, p1.
RND 16: ssk, k1, m1l-p, p5, 2/1 LPC, p1, 2/1 RPC, p5, m1r-p, k1, k2tog, p1.
RND 17: (k2, p7, k2, p1) × 2.
RND 18: 2/1 LC, p6, wya5-4, p6, 2/1 RC, p1.
RND 19: k tbl, k2, p6, k2, p1, k2, p6, k2, k tbl, p1.
RND 20: k tbl, 2/2 LPC, p3, 2/1 RPC, p1, 2/1 LPC, p3, 2/2 RPC, k tbl, p1.
RND 21: k tbl, p1, k tbl, k1, p4, k2, p3, k2, p4, k1, (k tbl, p1) × 2.
RND 22: k tbl, p1, k tbl, 2/2 LPC, p1, k2, p3, k2, p1, 2/2 RPC, (k tbl, p1) × 2.
RND 23: (k tbl, p1) × 2, k tbl, k1, p2, k2, p3, k2, p2, k1, (k tbl, p1) × 3.
RND 24: (k tbl, p1) × 2, k tbl, 2/2 LPC, k1, p3, k1, 2/2 RPC, (k tbl, p1) × 3.
RND 25: (k tbl, p1) × 3, k tbl, k3, p3, k3, (k tbl, p1) × 4.
RND 26: (k tbl, p1) × 3, k tbl, 2/2 LPC, p1, 2/2 RPC, (k tbl, p1) × 4.
RND 27: (k tbl, p1) × 12.
RND 28: m1r, (k tbl, p1) × 4, k tbl, k2tog, p1, ssk, (k tbl, p1) × 4, k tbl, m1l, p1.
RND 29: k1, m1r, (k tbl, p1) × 4, k2tog, p1, ssk, (p1, k tbl) × 4, m1l, k1, p1.
RND 30: k2, m1r, (k tbl, p1) × 3, k tbl, k2tog, p1, ssk, (k tbl, p1) × 3, k tbl, m1l, k2, p1.
RND 31: k3, m1r, (k tbl, p1) × 3, k2tog, p1, ssk, (p1, k tbl) × 3, m1l, k3, p1.
RND 32: k4, m1r, (k tbl, p1) × 2, k tbl, k2tog, p1, ssk, (k tbl, p1) × 2, k tbl, m1l, k4, p1.
RND 33: k5, m1r, (k tbl, p1) × 2, k2tog, p1, ssk, (p1, k tbl) × 2, m1l, k5, p1.
RND 34: k6, m1r, k tbl, p1, k tbl, k2tog, p1, ssk, k tbl, p1, k tbl, m1l, k6, p1.
RND 35: k7, m1r, k tbl, p1, k2tog, p1, ssk, p1, k tbl, m1l, k7, p1.
RND 36: k8, m1r, k tbl, k2tog, p1, ssk, k tbl, m1l, k8, p1.
RND 37: k9, m1r, k2tog, p1, ssk, m1l, k9, p1.
RND 38: ssk, k9, m1l-p, p1, m1r-p, k9, k2tog, p1.
RND 39: ssk, k8, m1l, p3, m1r, k8, k2tog, p1.
RND 40: ssk, k7, m1l, k1, p3, k1, m1r, k7, k2tog, p1.

NEXT CHART REPEAT STARTS WITH RND 11.

CHART 3 for SIZE 5:

- RNDs 1 - 2: (k11, p1) × 2. (24 sts)
RND 3: m1r, k9, k2tog, p1, ssk, k9, m1l, p1.
RND 4: k tbl, m1r-p, k8, k2tog, p1, ssk, k8, m1l-p, k tbl, p1.
RND 5: k tbl, p1, m1r, k7, k2tog, p1, ssk, k7, m1l, p1, k tbl, p1.



RND 6: k tbl, p1, k tbl, m1r-p, k6, k2tog, p1, ssk, k6, m1l-p, (k tbl, p1) × 2.
RND 7: (k tbl, p1) × 2, m1r, k5, k2tog, p1, ssk, k5, m1l, (p1, k tbl) × 2, p1.
RND 8: (k tbl, p1) × 2, k tbl, m1r-p, k4, k2tog, p1, ssk, k4, m1l-p, (k tbl, p1) × 3.
RND 9: (k tbl, p1) × 3, m1r, k3, k2tog, p1, ssk, k3, m1l, (p1, k tbl) × 3, p1.
RND 10: (k tbl, p1) × 3, k tbl, m1r-p, k2, k2tog, p1, ssk, k2, m1l-p, (k tbl, p1) × 4.
RND 11: (k tbl, p1) × 4, m1r, k1, k2tog, p1, ssk, k1, m1l, (p1, k tbl) × 4, p1.
RND 12: (k tbl, p1) × 4, k tbl, m1r-p, k2tog, p1, ssk, m1l-p, (k tbl, p1) × 5.
RND 13: (k tbl, p1) × 12.

CHART 4 for SIZE 5:

RNDs 1 - 2: (k1l, p1) × 2. (24 sts)
RND 3: m1r, k9, k2tog, p1, ssk, k9, m1l, p1.
RND 4: k tbl, m1r-p, k8, k2tog, p1, ssk, k8, m1l-p, k tbl, p1.
RND 5: k tbl, p1, m1r, k7, k2tog, p1, ssk, k7, m1l, p1, k tbl, p1.
RND 6: k tbl, p1, k tbl, m1r-p, k6, k2tog, p1, ssk, k6, m1l-p, (k tbl, p1) × 2.
RND 7: (k tbl, p1) × 2, m1r, k5, k2tog, p1, ssk, k5, m1l, (p1, k tbl) × 2, p1.
RND 8: (k tbl, p1) × 2, k tbl, m1r-p, k4, k2tog, p1, ssk, k4, m1l-p, (k tbl, p1) × 3.
RND 9: (k tbl, p1) × 3, m1r, k3, k2tog, p1, ssk, k3, m1l, (p1, k tbl) × 3, p1.
RND 10: (k tbl, p1) × 3, k tbl, m1r-p, k2, k2tog, p1, ssk, k2, m1l-p, (k tbl, p1) × 4.
RND 11: (k tbl, p1) × 4, m1r, k1, k2tog, p1, ssk, k1, m1l, (p1, k tbl) × 4, p1.
RND 12: (k tbl, p1) × 4, k tbl, m1r-p, k2tog, p1, ssk, m1l-p, (k tbl, p1) × 5.
RNDs 13 - 14: (k tbl, p1) × 12.
RND 15: m1r, (k tbl, p1) × 4, k tbl, k2tog, p1, ssk, (k tbl, p1) × 4, k tbl, m1l, p1.
RND 16: k1, m1r, (k tbl, p1) × 4, k2tog, p1, ssk, (p1, k tbl) × 4, m1l, k1, p1.
RND 17: k2, m1r, (k tbl, p1) × 3, k tbl, k2tog, p1, ssk, (k tbl, p1) × 3, k tbl, m1l, k2, p1.
RND 18: k3, m1r, (k tbl, p1) × 3, k2tog, p1, ssk, (p1, k tbl) × 3, m1l, k3, p1.
RND 19: k4, m1r, (k tbl, p1) × 2, k tbl, k2tog, p1, ssk, (k tbl, p1) × 2, k tbl, m1l, k4, p1.
RND 20: k5, m1r, (k tbl, p1) × 2, k2tog, p1, ssk, (p1, k tbl) × 2, m1l, k5, p1.
RND 21: k6, m1r, k tbl, p1, k tbl, k2tog, p1, ssk, k tbl, p1, k tbl, m1l, k6, p1.
RND 22: k7, m1r, k tbl, p1, k2tog, p1, ssk, p1, k tbl, m1l, k7, p1.
RND 23: k8, m1r, k tbl, k2tog, p1, ssk, k tbl, m1l, k8, p1.
RND 24: k9, m1r, k2tog, p1, ssk, m1l, k9, p1.
RNDs 25 - 26: (k1l, p1) × 2.
RNDs 27-36: rep RNDs 3-12.
RND 37: (k tbl, p1) × 4, k tbl, k2tog, p1, ssk, (k tbl, p1) × 5. (22 sts)
RND 38: (k tbl, p1) × 4, k2tog, p1, ssk, (p1, k tbl) × 4, p1. (20 sts)
RND 39: (k tbl, p1) × 3, k tbl, k2tog, p1, ssk, (k tbl, p1) × 4. (18 sts)
RND 40: (k tbl, p1) × 3, k2tog, p1, ssk, (p1, k tbl) × 3, p1. (16 sts)
RND 41: (k tbl, p1) × 2, k tbl, k2tog, p1, ssk, (k tbl, p1) × 3. (14 sts)
RND 42: (k tbl, p1) × 2, k2tog, p1, ssk, (p1, k tbl) × 2, p1. (12 sts)
RND 43: (k tbl, p1) × 6.

