

make & sew toys

ISSUE 12

NAUTICAL FOX TEMPLATES

Use these guides to get started today

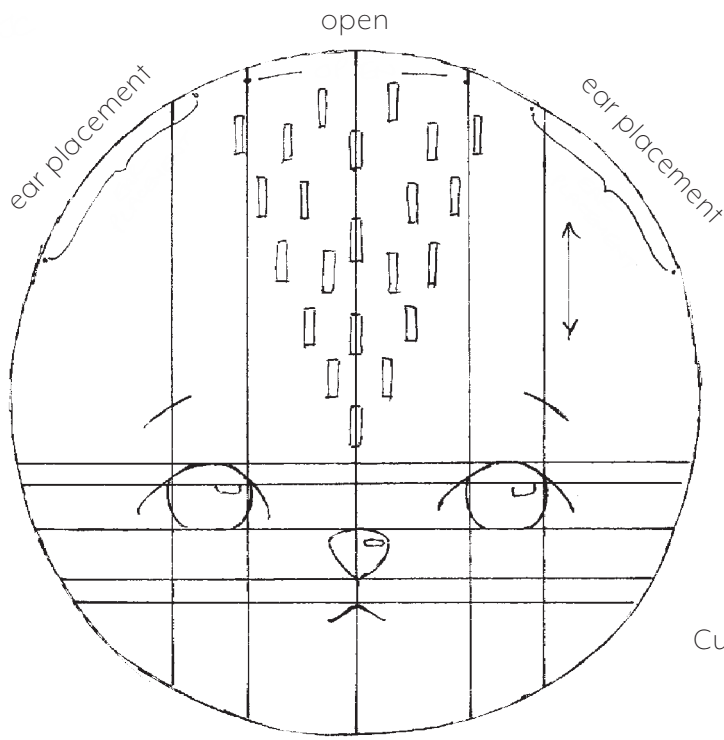


Designer: Shelly Down
Magazine page: 32

IN YOUR PRINT MENU, UNDER SIZE OPTIONS, BE SURE TO SELECT **'100%'** or **'ACTUAL SIZE'**, INSTEAD OF 'FIT TO PAGE'

© ACEVILLE PUBLICATIONS LTD | MAKEANDSEWTOYS.COM

All projects, templates and patterns are for personal home use only and cannot be sold or used for commercial purposes

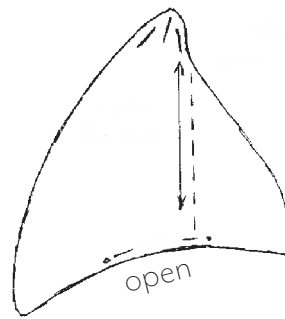


HEAD

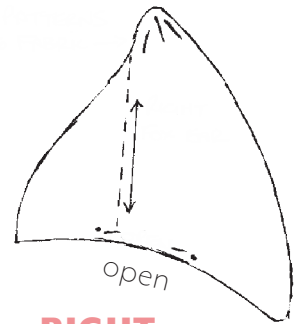
Cut 1

EARS

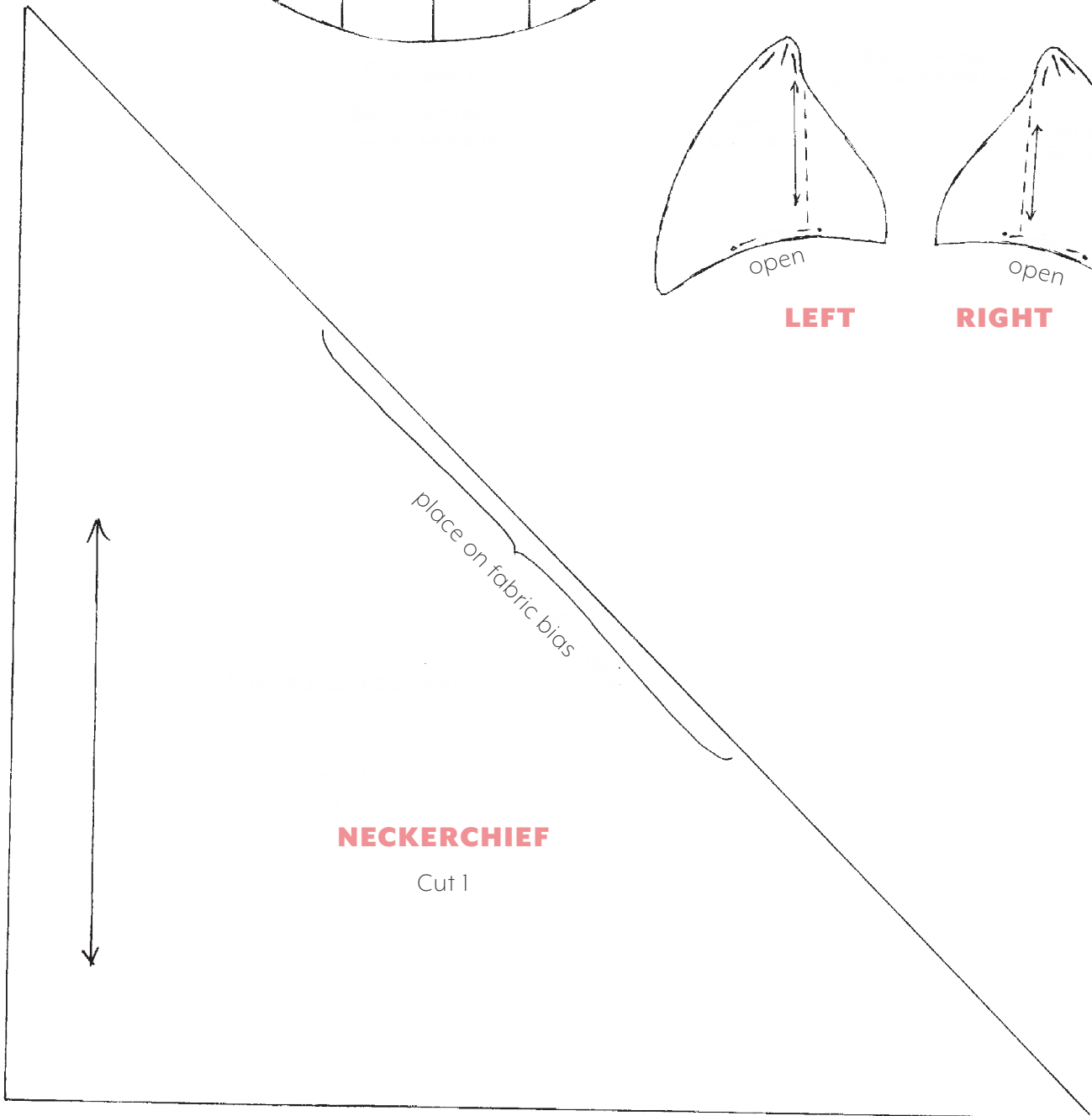
Cut 1 of each onto layered fabrics



LEFT

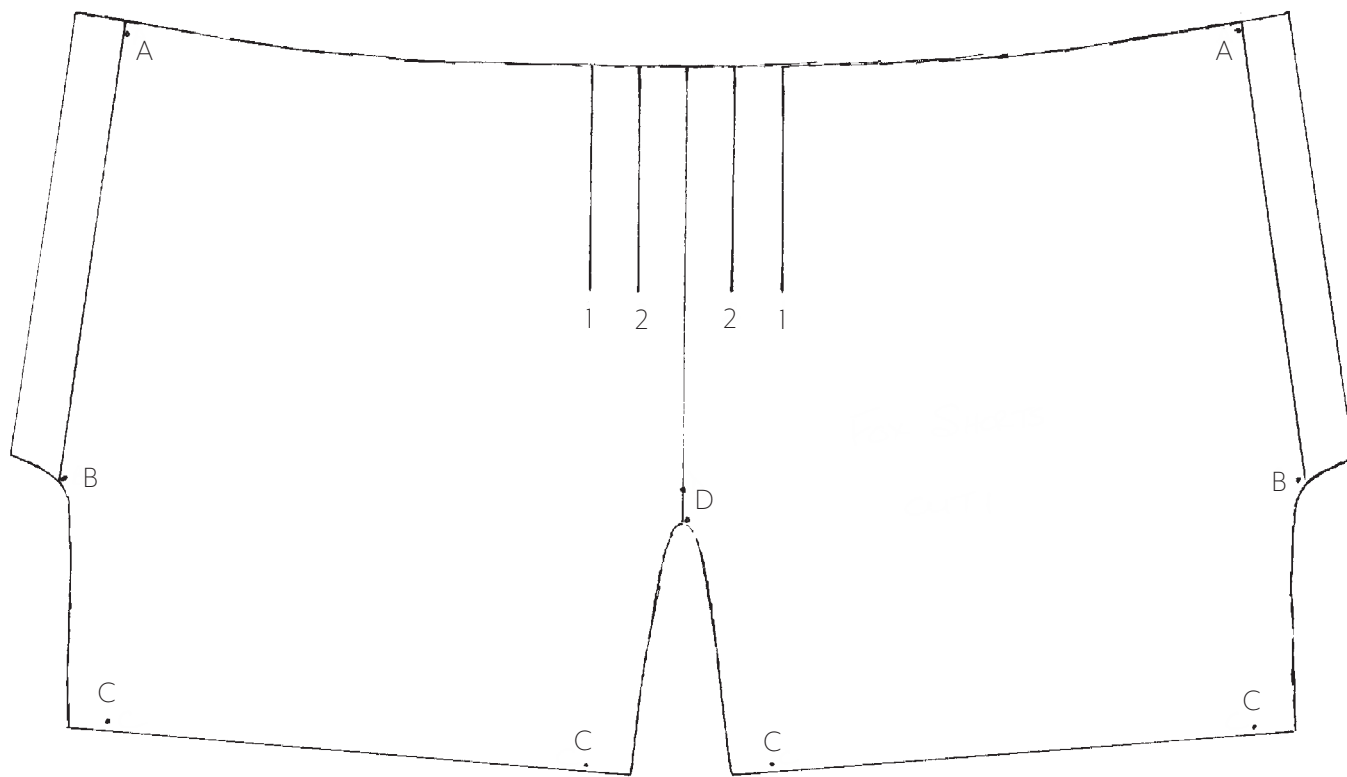
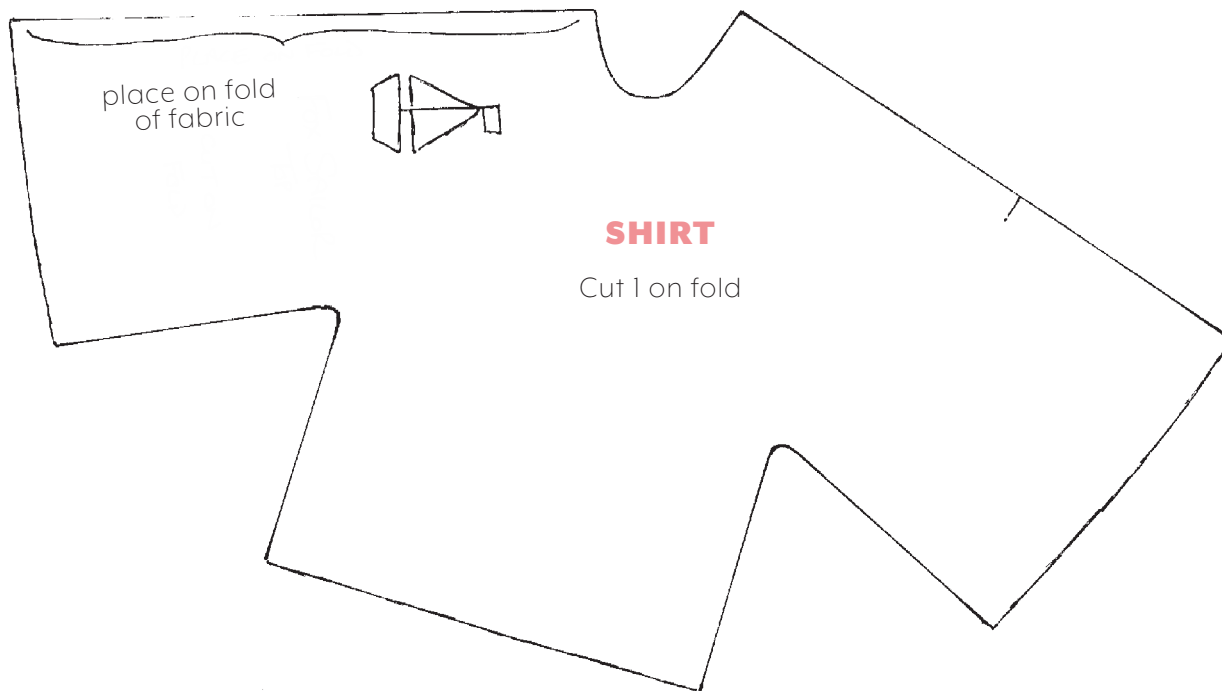


RIGHT



NECKERCHIEF

Cut 1

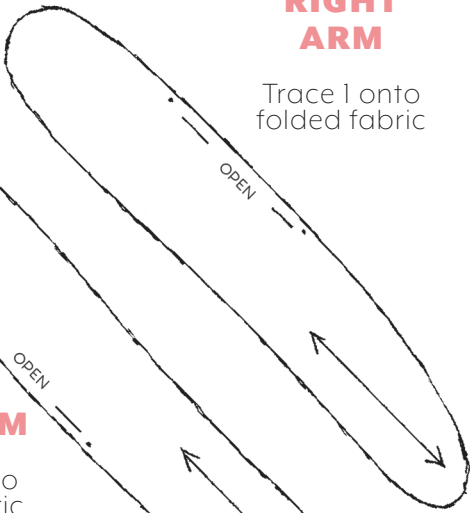


SHORTS

Cut 1

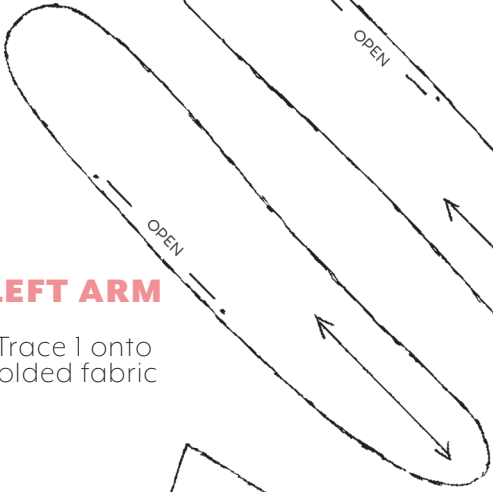
**RIGHT
ARM**

Trace 1 onto
folded fabric



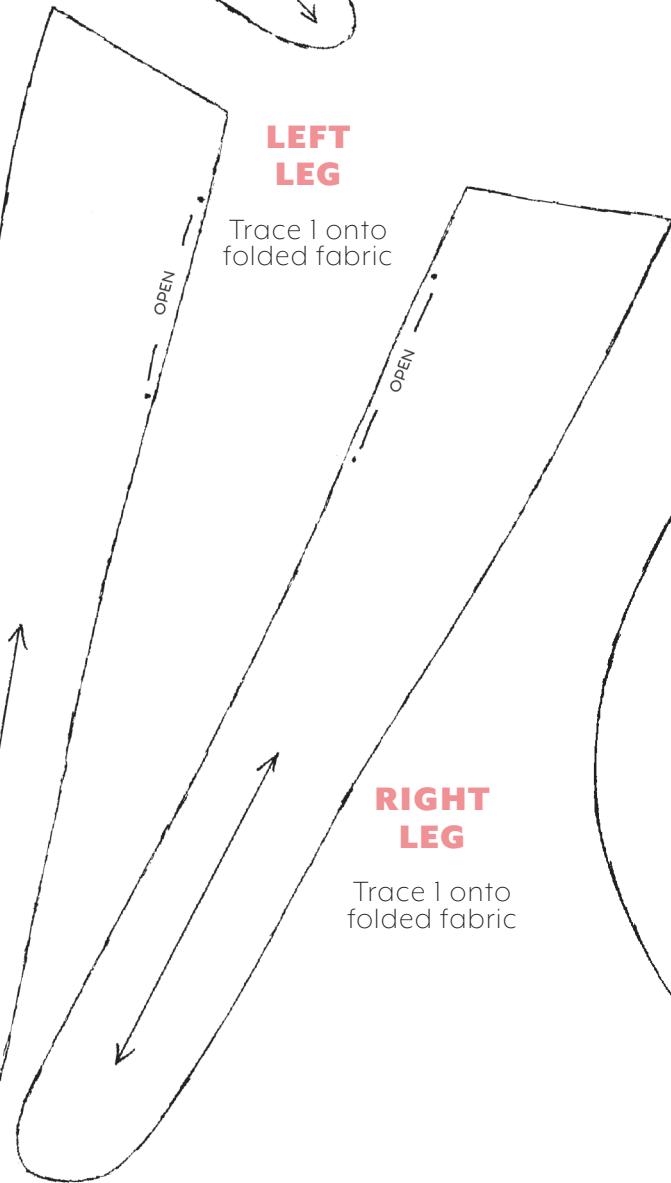
LEFT ARM

Trace 1 onto
folded fabric



**LEFT
LEG**

Trace 1 onto
folded fabric



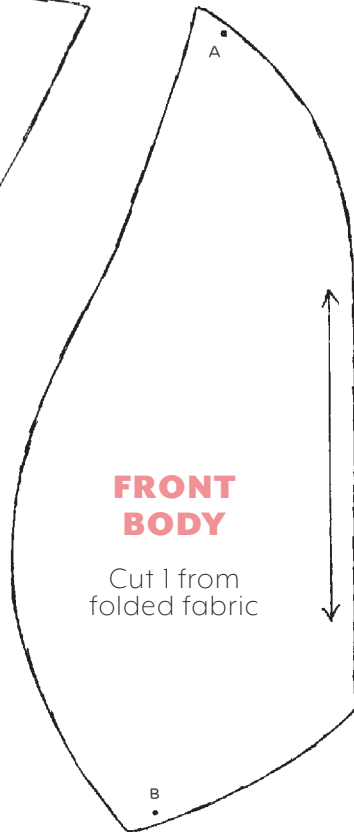
**RIGHT
LEG**

Trace 1 onto
folded fabric



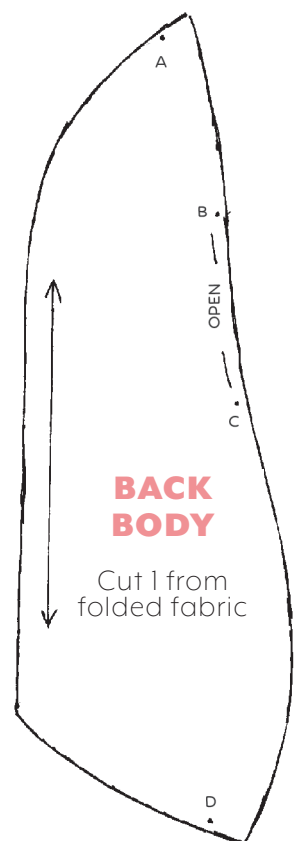
**FRONT
BODY**

Cut 1 from
folded fabric



**BACK
BODY**

Cut 1 from
folded fabric



Let's continue...

ARMS & LEGS

1 Fold 23cm x 28cm of beige fabric in half right sides facing, warp running vertically. Trace the arm leg pieces, marking dots for openings along the backs of the arms and the insides of the legs. Pin the fabric together. Using a straight machine stitch and short stitch length, stitch directly onto the traced outlines of the pattern pieces, leaving the area between the marked dots open, and ending each seam with a back stitch. Leave a long tail of thread.

2 Trim excess fabric around each piece, leaving a little tab between the dots for the openings near the top of the legs and the back of the arms. Turn each limb right side out. Stuff the arms and legs, making sure each is evenly filled. Tuck the tabs in at the back of the arms/top of legs and ladder stitch the openings closed, adding more stuffing to fill in if needed.

ATTACHING THE HEAD

3 Position the head onto the neck area of the body, matching the head seam with the seams on either side of the body. Pin in place, inserting sturdy pins in through the chest area at the front and the upper area of the back on the back side of the body, up through the neck and into the head.

2 Turn the doll so that the back of the head is facing you. Thread a beading needle with one strand of matching embroidery thread. Insert along the top seam of the neck, just below the head. Working clockwise around the head, ladder stitch the head onto the neck, keeping your stitches small and neat. Continue ladder stitching around five to seven more times to ensure the head is anchored onto the neck securely.

3 As you stitch the next few rounds, take the ladder stitches a tiny bit lower down on the neck and a tiny bit higher on the face. Keep your stitches tiny and straight, as this will give a nice finish to the seam. End off at the back of the head, tying off the thread along the seam.



nautical FOX

PROJECT CONTINUED FROM **PAGE 70**

Don't miss...

Pick up next month's copy of *Make & Sew Toys* to discover how to make our nautical fox's outfit, on sale from 10th February 2022

ATTACHING THE ARMS & LEGS

Pin the tops of the legs to the bottom seam of the body. Ladder stitch the front and back of each leg onto the seam. Pin the arms to the sides of the body. Using a double-threaded long doll needle, insert it underneath one arm, bring it through the body and out through the arm on the opposite side. Make a small stitch, then bring the needle back through the same arm. Go back and forth a few times in this way, then end off under an arm.

EARS

1 Place the beige outer ear fabric and white inner ear fabric together, right sides facing. Trace the left and right ear patterns directly onto the fabric, transferring the dots for the opening at the base of the ears. Pin the pieces together.

2 Stitch around each ear, beginning at one dot at the base of the ear and sewing around to the dot on the opposite side, leaving the area between the dots open for turning. Begin and end each seam with a back stitch and leave a long tail of thread once you've reached the dot on the opposite side. Trim excess fabric around each ear, leaving a little tab between the dots for the openings. Turn the ears right side out, tuck the tabs in and ladder stitch the openings closed, leaving a tail of thread for attaching the ears to the head later. Press the work.

3 Using the pattern pieces as a guide, transfer the line markings for the beads at the top of each ear onto the inner ears. To attach the three beads onto each of the inner ear tips, use the same thread and method as you did when attaching the beads to the forehead, being careful not to stitch through to the fabric on the outer ears.

4 Using the pattern pieces as a guide, transfer the dotted line for the fold placement onto each inner ear. Fold each ear over along the dotted line and pin in place. To attach the ears to the head, pin each ear onto the marked area at the top of the head. Ladder stitch the front and back of each ear onto the head seam. **M&ST**

the wrong side. Pin the head fabric onto a second 18cm square of beige cotton, right sides facing.

2 Using a straight machine stitch and short stitch length, sew directly around the marked line, starting from the top of the head where the dot at the right begins. Start and end the seam with a back stitch, leaving a long tail of thread. Trim the excess fabric, leaving a little tab between the dots for the opening at the top. Turn right side out and press.

3 Begin to stuff the head, using a wooden spoon to push the filling down into the lower area of the face. Fill up the bottom of the face, then add stuffing to fill the cheeks, eye area and forehead. Push the stuffing down from the front and back of the head so it is evenly distributed and use your hands to form the shape as you fill it. The head should be nice and full, but not bursting at the seams. As you get closer to the opening, pin it together and start ladder stitching the area closed, adding more stuffing as you close and rounding out the top part of the head. Pull the thread firmly but not too tightly after a few ladder stitches, as this allows the two sides of the head to close evenly.

BODY

1 Cut 15cm x 23cm of beige fabric and fold in half widthways, right sides facing. Pin the front and back body pieces onto the fabric and cut out. Mark the dots for the opening on the back body as before. Remove the paper templates and pin the fabric pieces together. For the front body, pin along the rounded curve of the body from dot A to dot B. Pin the back body, placing pins between A and B and between C and D.

2 Using a straight machine stitch, sew the front body from A to B, 5mm away from the fabric edge. Back stitch at the beginning and end of the seam and cut off excess thread from both ends. Stitch the back body from A to B. Begin and end the seam with back stitch and leave a long thread tail at B, trimming the excess at A. Stitch from C to D in the same way, snipping the excess thread at both ends. Open the fabric on both front and back body pieces and press the seams flat. Snip the pointed corners at the top and bottom of each seam, so that the edges of the seams match the rounded edges of the top and bottom of the front and back body pieces.

3 Pin the front and back body together, right sides facing. Beginning at the seam at the top narrower end of the body, stitch all the way around, 5mm away from the edge. Trim excess

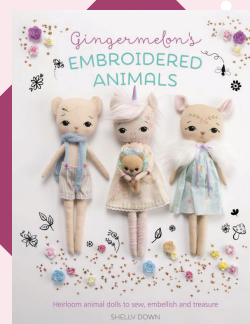
fabric and snip off corners at the bottom sides of the body. Turn right side out and bring the thread tail out through the opening at the back. Stuff firmly, filling the bottom, then rounding out the tummy and chest. Firmly stuff the neck area. Once the body is fully stuffed, begin ladder stitching the opening at the back closed. Add stuffing to fill in the area below the opening as needed. Turn to page 80 to continue the project. **M&ST**

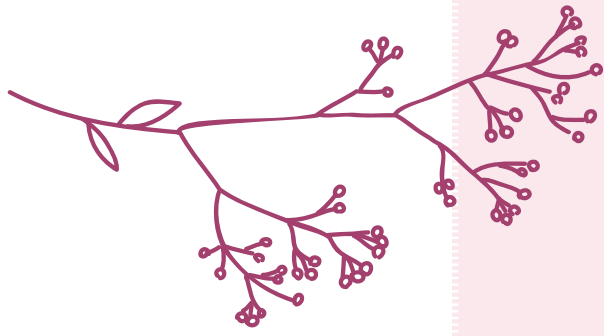


Continued on page 80...

get the BOOK!

Gingermelon's Embroidered Animals by Shelly Down features an exquisite collection of stunning animal dolls, including our nautical fox. £15.99, uk.bookshop.org



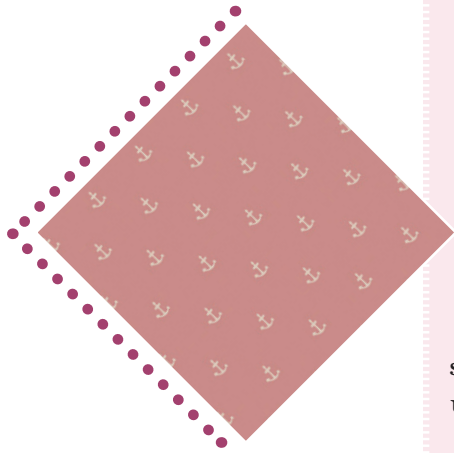


nautical FOX

MAKE A SPLASH WITH **SHELLY DOWN'S**
SWEET LITTLE SAILOR TOY



Ahoy there! Are you ready to go sailing? This charming fellow loves to race his sailboat across the pond with his pals. His sweet elfin features are embroidered using a mix of stem and satin stitch, with little beaded ears. Don't forget to pick up your copy next month to discover how to make his nautical outfit.



FABRIC swatch

Our seafaring fellow needs a fitting print for the high seas. We've picked out Nautical Spell Blush from Art Gallery Fabrics. £5 per half metre, cornflowercrafts.co.uk



YOU'LL NEED...

- Cotton fabric: medium-weight, beige; lightweight, pink, mint, white
- Toy filling
- Cotton embroidery thread: black, white, beige; metallics, blue shimmer, red, copper
- Straight tube beads, navy blue, 5mm x 22
- Disappearing ink marker
- Embroidery hoop
- Fabric glue

Note: The pattern pieces do not include seam allowances; add a 5mm seam allowance to each piece when cutting out.

Let's get started...

Sew Clever...

FACE DETAIL

- Download the templates from makeandsewtoys.com, then print and cut out. Trace the head onto the right side of beige cotton fabric, 18cm square, with a disappearing ink marker, but do not cut out yet. To mark the grid on the head, keep the head template pinned in place and gently lift the outer edges. Mark the beginning of the lines onto the fabric, then remove the template and use a ruler to connect the lines. This grid will help with the placement of the facial features.
- To transfer the facial markings and embroidered design, use washi tape to fix the paper head pattern piece onto a window or light box. Tape the fabric over the paper pattern, making sure to align the grid lines. Use the disappearing ink marker to trace the facial markings and embroidery design onto the fabric. Remove the fabric from the window and position it over the inside ring of an embroidery hoop, centring the fabric before positioning the outer hoop. Twist the screw at the top of the hoop until the fabric is snug.
- All facial embroidery is done with one strand of thread unless otherwise stated. Insert a needle threaded with black thread through the back of the

Instead of using straight beads, you could double thread a needle with sparkly embroidery thread and use straight stitches on your fox's forehead and ears

- fabric and out through the inner corner of the right eye. Using stem stitch, outline the top curve of the eye, then outline the rounded part of the eye. Fill in the rounded part with satin stitch, working neatly and evenly and keeping stitches close together. Repeat for the left eye. Using black stem stitch, embroider the eyebrows and eyelashes.
- Outline the snout in red metallic stem stitch, then fill in the centre of the snout with a slightly wider spaced satin stitch, working neatly and evenly and keeping your stitches close together. Switch to copper metallic thread and fill in the open spaces so that you end up with a two-toned look. Using the same thread and stem stitch, embroider the mouth. Add a smudge of pink pencil to the mouth and cheeks. Using white satin thread, make a couple of tiny straight stitches in the top right-hand corner of each eye and the top right-hand corner of the snout.
 - The marked lines on the fox's forehead are a guide for the tube

bead placement. Insert a beading needle threaded with blue shimmer thread up through the base of the first line marked at the centre of the forehead. Thread a bead onto the needle, slide it down onto the fabric, then insert the tip of the needle into the fabric at the opposite end of the bead to secure it in place. Repeat twice. Continue stitching the beads onto the marked lines on the forehead, working upwards from row to row.

HEAD

- Remove the head fabric from the hoop and gently press it flat. This will activate the erasable marker, so you can see the outline clearly. Turn the fabric around so that the back of the head is facing up. Place the head paper template on the back of the fabric and use the disappearing ink marker to retrace the head outline, aligning the pattern's outer edges exactly with the outline on the right side. Mark dots at the top of the head for the opening. You do not need to mark the grid on