

PONYTA

GALARIAN VARIANT
CROCHET PATTERN
BY PALEFOX





QUESTIONS?

BEATRICE.GROEGER@
PROTONMAIL.COM

SOCIAL MEDIA

RAVELRY @PALEFOXCRAFTS
INSTAGRAM @PALEFOXCRAFTS
ETSY PALEFOXCRAFTS

© COPYRIGHT

This pattern is **FOR PERSONAL USE ONLY!** Do not copy, reproduce, alter, publish, translate or distribute the content of this pattern in any way.

You may sell the handcrafted items made from my patterns as long as they are made by yourself and you **credit me as the original designer.**

NOTICE

Please read the provided notes for this pattern before starting your project (including the assembling, page 8).

This will make following the pattern and assembling the final parts much easier and thus improve the look of your plush. Most of your questions might already be answered ;)

MATERIALS

- Crochet hook 3.5mm for aran yarn weight (depending on how tight you crochet) and 6mm for bulky yarn
- Aran weight yarn (50g = approx 62m)
 - o 2x white skeins ~ 162.5 meters (177.7 yards), 65 grams
 - o 1x dark purple skein ~ 30.2 meters (33.0 yards), 13 grams
- Fluffy **bulky** yarn (50g = approx 85m)
 - o 1x lilac skein ~ 37.4 meters (40.9 yards), 22 grams
 - o 1x teal skein ~ 22.1 meters (24.2 yards), 13 grams
 - If you choose a different yarn size you might need more/less yarn -
- Fiber fill/Stuffing
- Wire or pipe cleaner (optional)
- Felt wool & felting needle for needle-felted details eyes, ears, nose
- OR -
- Felt sheet cut-outs/foam rubber sheets for eyes, ears and nose

HOW TO READ THIS PATTERN

Example:

Row 2 - [2sc, inc] x3 (12)

Read:

Crochet 2 single crochet stitches, followed by one increase. Repeat this 3 times. You will end up with 12 stitches for row 2.

SKILL LEVEL

Intermediate

ABBREVIATIONS | SKILLS

All pieces are worked in a continuous spiral unless stated otherwise!

- **Ch** – chain stitch
- **Slst** – slip stitch
- **Sc** – single crochet stitch
- **Hdc** – half double crochet
- **Dc** – double crochet stitch
- **Inc** – increase
- **Dec** – decrease (invisible)
- **BLO** – Back loop only
- [...] x**N** – repeat instructions inside the brackets **N** times in that row
- **chN** – make **N** chain stitches
- **Nsc** – crochet one sc in the following **N** stitches
- **Nmr** - start a magic ring with **N** stitches

TIPS FOR WORKING WITH AMIGURUMI PIECES

1. Knowing your **crochet habits** is very useful when choosing your hook size. Often you will see the hint to use a hook one size smaller than your yarn suggests to achieve tight stitches. I personally tend to crochet very tightly, so I counter this by using the same hook size as indicated on the yarn.

Crocheting too tightly will make it nearly impossible to work into your stitches later on, crocheting too loosely however, will make the stuffing show through (which will be a problem if your stuffing and yarn color differ greatly).

Choose a hook/yarn combination which suits your style (test it by crocheting a little test piece like a ball).

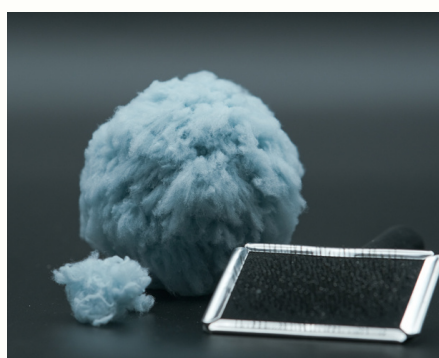
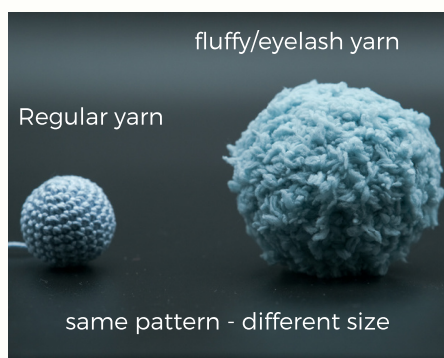
Your amigurumi might be a bit smaller/bigger than mine based on your own choices regarding the hooks.

2. **Stuff** your pieces **tightly** (unless mentioned otherwise) to avoid a wobbly plush which might fall over due to a lack of support. The tail, mane and head from Ponyta have some weight to them, so neglecting to tightly stuff the legs or not using a wire to support them might make your plush unstable.
3. **Pin parts together** before sewing to reposition and align if necessary.

TIPS FOR WORKING WITH FLUFFY YARN

Working with **fluffy** yarn can be very frustrating in the beginning. Here are some tips, which might make it easier for you:

1. Try not to 'see' the stitches (as it should prove almost impossible) but rather '**feel**' them. Starting a piece with fluffy yarn is the hardest part in my opinion, because you can never quite see what you're doing. After a few rows this should be easier though and you should be able to feel for each stitch.
2. Use a **smaller yarn along** with the fluffy one to help you to actually see the stitches. You will basically crochet with two strands of yarn at the same time. This might be the easiest way for a beginner.
3. **Brush out** your fluffy pieces. You have finished your piece with a soft yarn but it just doesn't seem all that fluffy? Some of the long, soft fibers might be stuck between your stitches. Gently brushing them out with a pet brush or a wire comb will loosen the fluff parts between the stitches and make everything look soft on the outside. Careful though! Don't overdo the brushing/combining, you might pull too hard and damage the stitches.
4. **Don't be too exact, just wing it.** Yes, you read that right. Fluffy yarn can be frustrating. Missing a stitch this round? Just add it in the next one. The volume of the yarn will hide **small** mistakes, so don't be too hard on yourself. Small uneven parts will be invisible once you brush the yarn into shape. Just have fun with it :)



HEAD - 3.5MM

Crochet in white.

Row 1 - 6sc mr (6)
Row 2 - [Inc] x6 (12)
Row 3 - [Sc, inc] x6 (18)
Row 4 - [Inc, 2sc] x6 (24)
Row 5-6 - Sc all (24)
Row 7 - 5sc, inc, 6sc, inc, 6sc, inc, 4sc (27)
Row 8 - Sc all (27)
Row 9 - 13sc, inc, 6sc, inc, 6sc (29)
Row 10 - 16sc, inc, 3sc, inc, 4sc, inc, 3sc (32)
Row 11 - 16sc, [inc, 3sc] x4 (36)
Row 12 - [8sc, inc] x4 (40)
Row 13 - [9sc, inc] x4 (44)
Row 14 - [10sc, inc] x4 (48)
Row 15 - 15 sc, inc, 22 sc, inc, 9sc (50)
Row 16-20 - Sc all (50)
Row 21 - [Dec, 8sc] x5 (45)
Row 22 - [7sc, dec] x5 (40)
Row 23 - [Dec, 6sc] x5 (35)
Row 24 - [5sc, dec] x5 (30)
Row 25 - [Dec, 4sc] x5 (25)

- Start stuffing as you go -

Row 26 - [3sc, dec] x5 (20)
Row 27 - [Dec, 2sc] x5 (15)
Row 28 - [Sc, dec] x5 (10)
Row 30 - [Dec] x5 (5)

Slst and fasten off, leaving a tail to close up the 5-st hole.



EARS (MAKE 2) - 3.5MM

Tip: The inner ear color can be created in multiple ways. You can crochet the ear and needle felt the darker color or surface crochet on a darker yarn.

Another way would be to use a color change and incorporate the darker yarn while crocheting the ear. Use whichever way feels most comfortable for you. For a seamless color change guide refer to the second PDF that is ready to download after purchasing this pattern :)

I will create an inner ear patch which will be sewn on in the assembly part.

(CONTINUE) EARS (MAKE 2)

Crochet in white.

Row 1 - 4sc mr (4)
Row 2 - [Sc, inc] x2 (6)
Row 3 - [Sc, inc] x3 (9)
Row 4 - [2sc, inc] x3 (12)
Row 5 - [3sc, inc] x3 (15)
Row 6 - Sc all (15)
Row 7 - [4sc, inc] x3 (18)
Row 8 - [5sc, inc] x3 (21)
Row 9 - Sc all (21)
Row 10 - [6sc, inc] x3 (24)
Row 11 - [7sc, inc] x3 (27)
Row 12 - [8sc, inc] x3 (30)
Row 13 - Sc all (30)
Row 14 - 5sc, 3dec, 19sc (27)
Row 15 - 12sc, dec, 11sc, dec (25)

Slst and fasten off, leaving a long tail for sewing. Insert Wire (optional). If you crochet the inner ear, add wire after sewing on the inner ears.



INNER EAR (MAKE 2) - 3.5MM

Crochet in dark purple.

For the inner ear we will put 3 stitches into the increases, marked as inc3.

Row 1 - 6sc mr (6)
Row 2 - [Sc, inc3] x 3 (12)
Row 3 - 2sc, inc3, [3sc, inc3] x 2, sc (18)

In row 4, our increases will be made up as follows: hdc, dc, hdc into a single stitch. They are marked as 'hdc inc3', but inserting a dc into the middle will give you a little bit of a pointy edge. This way, the inner ear parts will fit better into the ear fold.

Row 4 - 3sc, hdc inc3, (5sc, hdc inc3) x 2, 2sc (24)

Sl st in next stitch and fasten off. Align a white ear and purple piece. Cut the yarn, leaving a long yarn tail for sewing to the ear, and fasten off.



NECK - 3.5MM

Crochet in white.

- Row 1 - Ch 26, slst ends together (25)
- Row 2 - Sc all (25)
- Row 3-4 - 4hdc, 6sc, dec, 6sc, 6hdc, hdc inc (25)
- Row 5 - 5hdc, 10sc, 10hdc (25)
- Row 6 - 5hdc, 4sc, dec, 5sc, 9hdc (24)
- Row 7 - 5hdc, 3sc, 2dec, 3sc, 6hdc, hdc inc, 2hdc (23)
- Row 8 - 7hdc, hdc inc, 4hdc, 8sc, inc, 2sc (25)
- Row 9 - 2hdc, 8sc, 2sl st

Do not crochet into the remaining stitches and leave them unworked.

Slst and fasten off, leaving a long tail to sew to the body.

The side where the increases from the last row meet will be pinned to the chest, the decreases will serve as the back of the neck and point to Ponytas backside.



connect chain ends



finished neck

HORN - 3.5MM

Start with dark purple.

- Row 1 - 4sc mr (4)
- Row 2 - [Sc, inc] x2 (6)
- Row 3 - [Sc, inc] x3 (9)
- Row 4 - [2sc, inc] x3 (12)

Switch to white.

- Row 5-6 - Sc all (12)

Continue with dark purple.

- Row 7 - Sc all (12)
- Row 8 - [3sc, inc] x3 (15)
- Row 9 - Sc all (15)
- Row 10 - [4sc, inc] x3 (18)

Sl st and finish off. Leave a tail for sewing.



BODY - 3.5MM

Crochet in white.

- Row 1 - 6sc mr (6)
- Row 2 - 6inc (12)
- Row 3 - [Sc, inc] x6 (18)
- Row 4 - [2sc, inc] x6 (24)
- Row 5 - [3sc, inc] x6 (30)
- Row 6 - [4sc, inc] x6 (36)
- Row 7 - Sc all (36)
- Row 8 - [5sc, inc] x6 (42)
- Row 9-13 - Sc all (42)
- Row 14 - [12sc, dec] x3 (39)
- Row 15-16 - Sc all (39)
- Row 17 - [11sc, dec] x3 (36)
- Row 18 - Sc all (36)
- Row 19 - [11sc, inc] x3 (39)
- Row 20 - Sc all (39)
- Row 21 - [5sc, inc] x6, 3sc (45)
- Row 22 - Sc all (45)
- Row 23 - 13sc, 19hdc, 13sc (45)
- Row 24 - [6sc, inc] x6, 3sc (51)
- Row 25-26 - Sc all (51)
- Row 27 - [6sc, dec] x6, 3sc (45)
- Row 28 - 13sc, 19hdc, 13sc (45)
- Row 29 - [13sc, dec] x3 (42)
- Row 30 - Sc all (42)
- Row 31 - [5sc, dec] x6 (36)
- Row 32 - Sc all (36)

- Start stuffing as you go -

- Row 33 - [Dec, 4sc] x6 (30)
- Row 34 - [3sc, dec] x6 (24)
- Row 35 - [Dec, 2sc] x6 (18)
- Row 36 - [Sc, dec] x6 (12)
- Row 37 - [Dec] x6 (6)

Slst and fasten off, leaving a long enough tail to close up the 6-st hole.



FRONT LEG, LEFT - 3.5MM

Tip for color the color change: If you want a clean edge without the zig-zag line, then you can look at my seamless color change guide (extra pdf which you can download after purchasing my pattern). If you don't mind the uneven line and simply want to hide the 'step' that is visible when changing colors, simply start the color change with a slip stitch and finish the first round with a slip stitch as well.

Start with dark purple.

Row 1 - 6sc mr (6)
Row 2 - [Inc] x6 (12)
Row 3 - [Sc, inc] x6 (18)
Row 4 - BLO: [Sc, inc] x9 (27)
Row 5 - Sc all (27)
Row 6 - 10sc, dec, 3sc, dec, 10sc (25)
Row 7 - 5sc, dec, 5sc, dec, 5sc, dec, 4sc (22)
Row 8 - Dec, 8sc, dec, 10sc (20)
Row 9 - 8sc, 2dec, 8sc (18)

Continue with white.

Row 10-21 - Sc all (18)
Row 22 - Sc, inc, 16sc (19)
Row 23 - Sc all (19)
Row 24 - Dec, 6sc, inc, sc, inc, sc, inc, 4sc, dec (20)
Row 25 - 2dec, 5sc, 2inc, 2sc, 2inc, 5sc (22)
Row 26-27 - Sc all (22)

If you don't use a wire, start stuffing now.

Add 1sc (or however many you need) to start row 28 in the middle of the leg (imagine the 6 o'clock position on a watch).

We will switch to flat rows at this point. Flat meaning, that we only crochet half of the row from before (picture a flat pyramid). To avoid the visible line which can be seen in flat worked pieces that are crocheted "back and forth", you can cut the yarn at the end of each row and join it at the beginning of each new row. Don't forget to tie or weave in the ends!

Row 28 - 5hdc, hdc inc, hdc, hdc inc, 5hdc, sc (16) turn
Row 29 - Sc, 12hdc, sc (14) turn
Row 30 - Sc, 11hdc, sc (13) turn
Row 31 - Sc, 10hdc, sc (12)

Sc along the edge of the flat rows of the leg to leave a clean edge. Leave a long tail for sewing to the body later.

Insert Wire (optional).

If you didn't stuff the leg before, do it now after inserting the wire.



FRONT LEG, RIGHT - 3.5MM

Start with dark purple.

Repeat rows 1-23 of the left front leg.

Row 24 - Sc, dec, 6sc, inc, sc, inc, sc, inc, 3sc, dec (20)
Row 25 - 2dec, 5sc, 2inc, 2sc, 2inc, 5sc (22)
Row 26-27 - Sc all (22)

After row 27 add 3 more sc (or however many you need to start from the middle/ 6 o'clock position) and start the next round from there. Turn your work before starting row 28.

Row 28 - 6hdc, hdc inc, hdc, hdc inc, 3hdc, sc (15) turn
Row 29 - Sc, 12hdc, sc (14) turn
Row 30 - Sc, 11hdc, sc (13) turn
Row 31 - Sc, 10hdc, sc (12)

Sc along the edge of the flat rows of the leg to leave a clean edge.

Leave a long tail for sewing to the body later.

Insert Wire (optional). If you didn't stuff the leg before, do it now after inserting the wire.



BACK LEG, LEFT - 3.5MM

Start with dark purple.

Row 1 - 6sc mr (6)
Row 2 - [Inc] x6 (12)
Row 3 - [Sc, inc] x6 (18)
Row 4 - BLO: [Sc, inc] x9 (27)
Row 5 - Sc all (27)
Row 6 - 10sc, dec, 3sc, dec, 10sc (25)
Row 7 - 5sc, dec, 5sc, dec, 5sc, dec, 4sc (22)
Row 8 - Dec, 8sc, dec, 10sc (20)
Row 9 - 8sc, 2dec, 8sc (18)

Continue with white.

Row 10 - Sc all (18)
Row 11 - Dec, 6sc, inc, 9sc (18)
Row 12-17 - Sc all (18)
Row 18 - Dec, 5sc, inc, sc, inc, sc, inc, 4sc, dec (19)
Row 19 - Sc all (19)
Row 20 - Dec, 5sc, inc, sc, inc, sc, inc, 5sc, dec (20)
Row 21 - Dec, 16sc, dec (18)
Row 22 - Sc all (18)
Row 23 - Dec, 7sc, inc, 8sc (18)
Row 24 - Inc, 17sc (19)
Row 25 - 5sc, inc, 13sc (20)
Row 26 - Sc, inc, 8sc, inc, 9sc (22)

(CONTINUE) BACK LEG, LEFT

Row 27 - Sc all (22)

Row 28 - 8sc, inc, 4sc, inc, 8sc (24)

If you don't use a wire, start stuffing now. Otherwise wait until the leg is done and the wire is added first. We will switch to flat rows at this point. Start the flat rows from the middle of the leg (6 o'clock position).

Row 29 - 5hdc, hdc inc, 3hdc, hdc inc, 3hdc, sc (16) turn

Row 30 - Sc, 12hdc, sc (14) turn

Row 31 - Sc, 10hdc, sc (12) turn

Row 32 - Sc, 8hdc, sc (10)

Tie all ends. Sc along the edge of the flat rows of the leg to leave a clean edge.

Insert Wire (optional).



BACK LEG, RIGHT - 3.5MM

Start with dark purple.

Repeat rows 1-24 of the left back leg.

Row 25 - 14sc, inc, 4sc (20)

Row 26 - 13sc, inc, 2sc, inc, 3sc (22)

Row 27 - Sc all (22)

Row 28 - 9sc, inc, 4sc, inc, 7sc (24)

If you don't use a wire, start stuffing now. Otherwise wait until the leg is done and the wire is added first. We will switch to flat rows at this point. Add 3 additional sc (or however many you need to start from the middle) before turning your work and start row 29 from there.

Row 29 - 5hdc, hdc inc, 3hdc, hdc inc, 3hdc, sc (16) turn

Row 30 - Sc, 12hdc, sc (14) turn

Row 31 - Sc, 10hdc, sc (12) turn

Row 32 - Sc, 8hdc, sc (10)

Once you've finished the legs you can start pinning them to the body to mark their position for sewing. More in the assembling part at **page 8**.

Fluffy Parts

We will now switch to the fluffy yarn.

The stitches per row and row counts are **estimates** and can vary depending on your yarn of choice and hook size!

Don't be afraid though, all parts are basically long tubes. Just try these instructions and see if you have to add or remove some stitches/rows to find your perfect fit.

Beginners: Please read page 2 for tips on how to work with this kind of yarn. Using two strands (fluffy + thinner strand) is the easiest way to do that. This part can be frustrating in the beginning - don't give up! It's worth it in the end, I promise :)

LEG FLUFF (MAKE 4) - 6MM

Crochet in lilac.

Depending on your fluffy yarn you may need to chain more than just 10. Simply start by chaining 10 and wrap it loosely around the hoof. At least 2 chains should overlap with the beginning since single crocheting the row will shorten it slightly.

Row 1 - Ch 10 (10)

Row 2 - Sc all, ch 1 and turn (9)

Row 3 - Sc all (9)

Slst and fasten off, leaving a long tail to sew to the body. By not slip-stitching the ends from the beginning we now have the option to sew the ends as tight together as necessary to not let them slip off the legs.



TAIL - 6MM

Start with teal.

Row 1 - 6sc mr (6)
Row 2 - [Sc, inc] x3 (9)
Row 3 - [2sc, inc] x3 (12)
Row 4 - [3sc, inc] x3 (15)
Row 5 - Sc all (15)
Row 6 - [4sc, inc] x3 (18)
Row 7 - [5sc, inc] x3 (21)
Row 8 - [6sc, inc] x3 (24)
Row 9-11 - Sc all (24)
Row 12 - [7sc, inc] x3 (27)
Row 13 - Sc all (27)

Continue in lilac.

Row 14-15 - Sc all (27)
Row 16 - [7sc, dec] x3 (24)
Row 17 - Sc all (24)
Row 18 - [6sc, dec] x3 (21)
Row 19 - [5sc, dec] x3 (18)

- Start stuffing as you go -

Row 20 - [4sc, dec] x3 (15)
Row 21 - [3sc, dec] x3 (12)
Row 22 - Sc all (12)
Row 23 - [2sc, dec] x3 (9)
Row 24 - [Sc, dec] x3 (6)

Slst and fasten off, leaving a long enough tail to sew the tail to the body.

Optional for posing: Bend the tip of a wire into a loop shape and secure the end by wrapping it with tape, cut off the wire to be roughly 3-4cm longer than the tail and insert it into the tail.

To secure the wire in the tail, insert the loop into the tail tip. Using an embroidery needle, guide a teal colored yarn string through the loop from the outside (feel for the wire loop with the needle) and make sure it's in place by pulling on the wire. If the yarn string follows, it is in the correct place. Knot the yarn string and hide the rest of the yarn inside the tail.



MANE - 6MM

Start with teal.

Row 1 - 6sc mr (6)
Row 2 - [Sc, inc] x3 (9)
Row 3 - [2sc, inc] x3 (12)
Row 4 - [3sc, inc] x3 (15)
Row 5 - Sc all (15)
Row 6 - [4sc, inc] x3 (18)

We will start slowly adding lilac over the next rows.
T= Teal, L = Lilac

Row 7 - [5sc, inc] x3 (21)
> [5sc, inc] T, 3sc L, [2sc, inc, 5sc, inc] T
Row 8 - [6sc, inc] x3 (24)
> [6sc, inc] T, 5sc L, [Sc, inc, 6sc, inc] T
Row 9 - Sc all (24)
> 8sc T, 8sc L, 8sc T
Row 10 - Sc all (24)
> 7sc T, 10sc L, 7sc T
Row 11 - Sc all (24)
> 6sc T, 13sc L, 5sc T
Row 12 - [7sc, inc] x3 (27)
> 5sc T, [2sc, inc, 7sc, inc, 3sc] L, [4sc, inc] T
Row 13 - Sc all (27)
> 4sc T, 19sc L, 4sc T
Row 14 - Sc all (27)
> 2sc T, 23sc L, 2sc T
Row 15 - Sc all (27)
> Sc T, 25sc L, sc T

Continue in lilac.

Row 16 - [7sc, dec] x3 (24)
Row 17 - Sc all (24)
Row 18 - [6sc, dec] x3 (21)
Row 19 - [5sc, dec] x3 (18)

- Start stuffing as you go -

Row 20 - [4sc, dec] x3 (15)
Row 21-26 - Sc all (15)
Row 27 - [3sc, dec] x3 (12)
Row 28 - [2sc, dec] x3 (9)
Row 29 - Sc all (9)
Row 30 - [Sc, dec] x3 (6)

Slst and fasten off, leaving a long enough tail to sew the mane to the head. Add a wire if you want the mane to hold a certain position.



BANGS (MAKE 2) - 6MM

You can either crochet the bangs or use individual strands of fluffy yarn, which you tie/knot to the front of the head and brush out until it is soft and no longer 'stringy'. This is the method I used for my Ponyta in the final pictures. If you prefer to crochet the bangs, crochet them as follows:

Crochet in lilac.

Row 1 - 8sc Mr (8)
Row 2 - Sc all (8)
Row 3 - [2sc, dec] x2 (6)
Row 4-5 - Sc all (6)
Row 6 - Sc, hdc, 2dc, hdc, sc (6)
Row 6 - Dec, 2sc, dec (4)

Slst and fasten off, leaving a long enough tail to sew the tail to the head.



MANE SPIKES - 6MM

Big Spike

Row 1 - 8sc Mr (8)
Row 2 - Sc all (8)
Row 3 - [2sc, dec] x2 (6)
Row 4 - [Sc, dec] x2 (4)

Small Spikes (make 2)

Row 1 - 6sc Mr (6)
Row 2 - Sc all (6)
Row 3 - [Sc, dec] x2 (4)

Slst and fasten off, leaving a long enough tail to sew to the body.



ASSEMBLING ALL PARTS

I prefer finishing all parts first and constantly pinning them together while working on them for reference until I am satisfied with all of them.

If you think one part looks too big/small it's easier to fix this while everything is separate and sometimes it's hard to judge how everything will look together until the very end. Keeping this in mind might save you some headaches along the way :)

1. Start with assembling body, legs and neck.

Try pinning the legs and neck to the body. If you don't have enough pins, 'lay' the body roughly onto the legs, use the leg wire - if you used any - to keep the body in place and pin the neck. Place all parts until you are content with their position. Stuff the neck once it is placed onto the body, so that it can keep its shape.



Since it's hard to work with all legs pinned on just mark where the other legs would go and sew them on. Now your majestic pony can stand on its own already!



2. But those legs still lack some fluff - let's change that :) Wrap the leg fluff around the hooves and sew the open end together (like a wrist band). Secure the fluff with a few stitches, so it doesn't slip off. Gently brush the fluff with a wired pet brush for extra soft fluff.



(CONTINUE) ASSEMBLING ALL PARTS

3. Time for the head. If you created the inner ear color with crocheted patches, sew those on first. After that start pinning the ears to the head. Place both ears in a way, that allows the horn and bangs to fit between them.



Place the horn in the middle between the ears.



4. Attach the head to the body.



(CONTINUE) ASSEMBLING ALL PARTS

5. Next is the tail. If you used a wire, poke the wire roughly between row 4 and 5 from the back end and sew the tail the body.



6. Attach the mane about 2 rows behind the horn. The free space between mane and horn will be covered up by the bangs.



7. If you crocheted the bangs, attach them in a way that covers the free space between horn and mane. If you wanted to use the individual yarn strings, cut the pieces to be 4-5 cm long when they're attached and tie/knot them to the head. only cover the space from mane up to halfway through the base of the horn. Attach as many as you like until it has the desired thickness. Gently brush the bangs.

7.



8. Almost done! Now we sew on the mane spikes to the bottom part of the mane. Place them in a triangle shape around the bottom. Imagine the mane having a hair tie at the end and the three spikes are the loose ends of the mane :)



9. It's time for the last and most important step of your new friend – the eyes!
Mark the spots where you want the eyes to be and attach them with your material of choice.
I chose to needle felt them on, but you can easily use some felting mats or rubber foam mats and cut out the shapes and details for the eyes.

For the needle felting I drew out the eyes on a piece of paper to find the right size. I pinned them on the head used them as a guideline for the felting process.
Glue/felt them on and you're done!



Congratulation! Your magical pony is done and ready to explore the world.

If you have any questions I will be glad to help you out. Don't be shy and contact me :)

