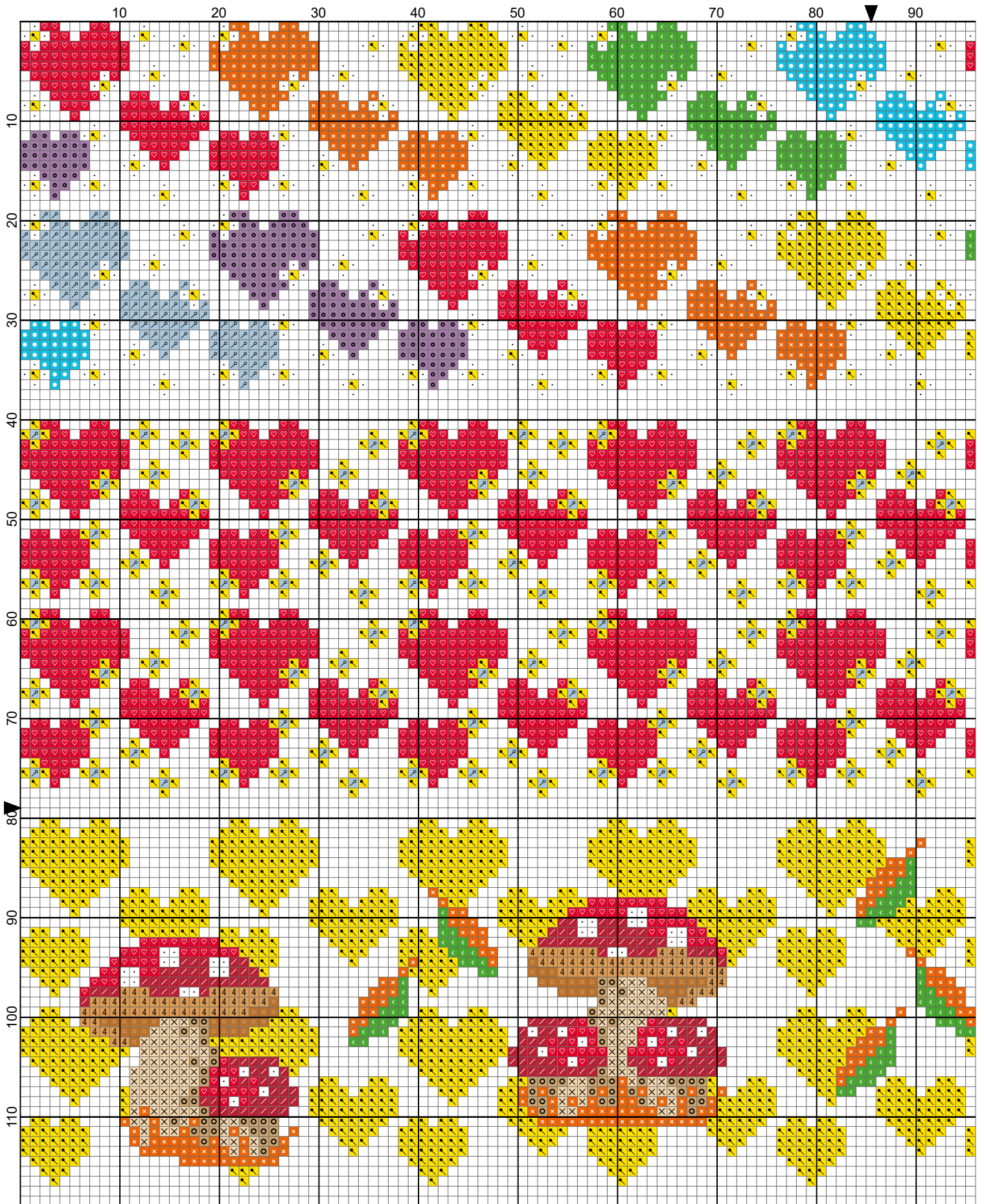
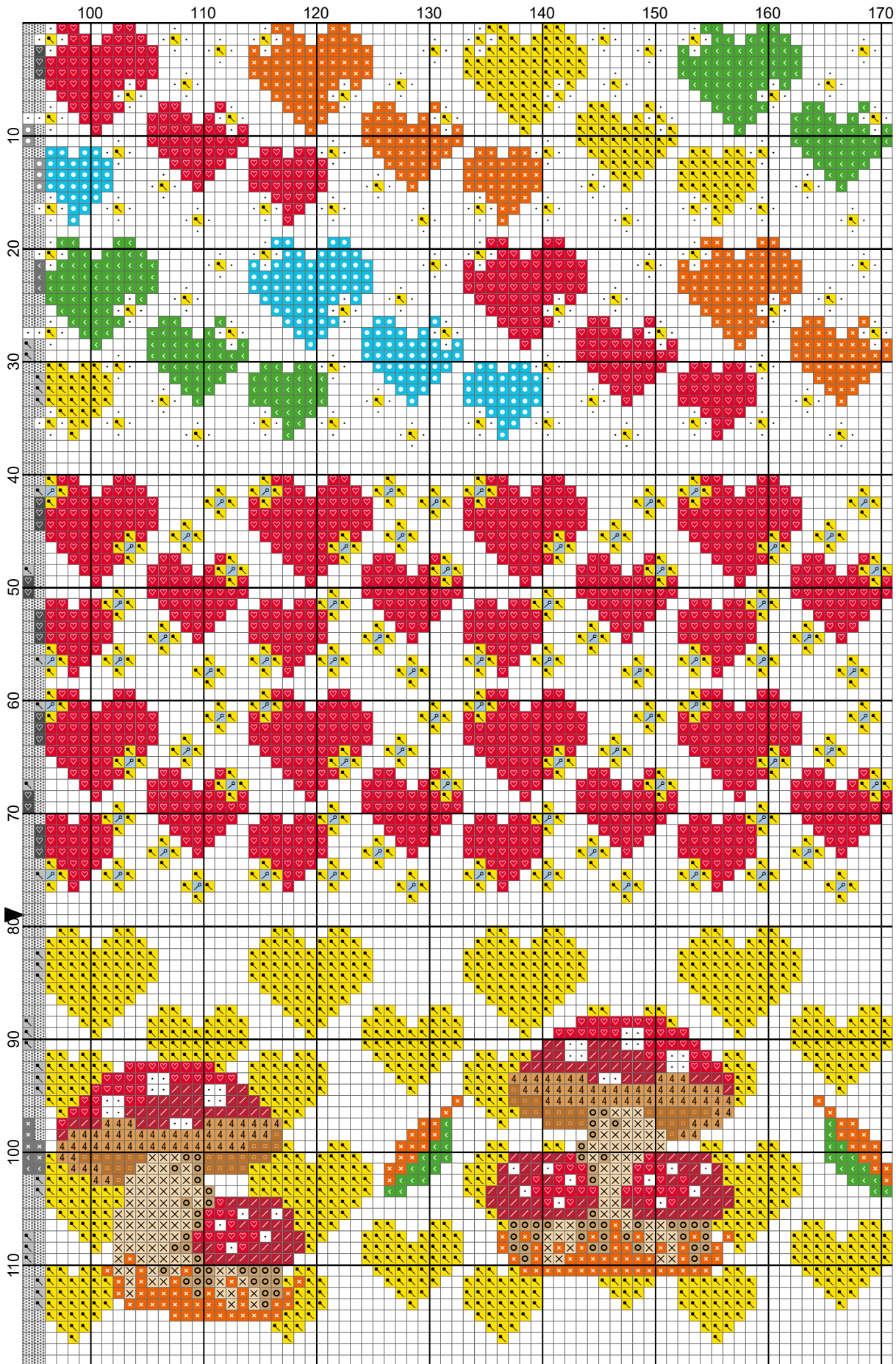


Cuori 4 stagioni by Natalia



Non solo Punto Croce di Natalia

Cuori 4 stagioni by Natalia

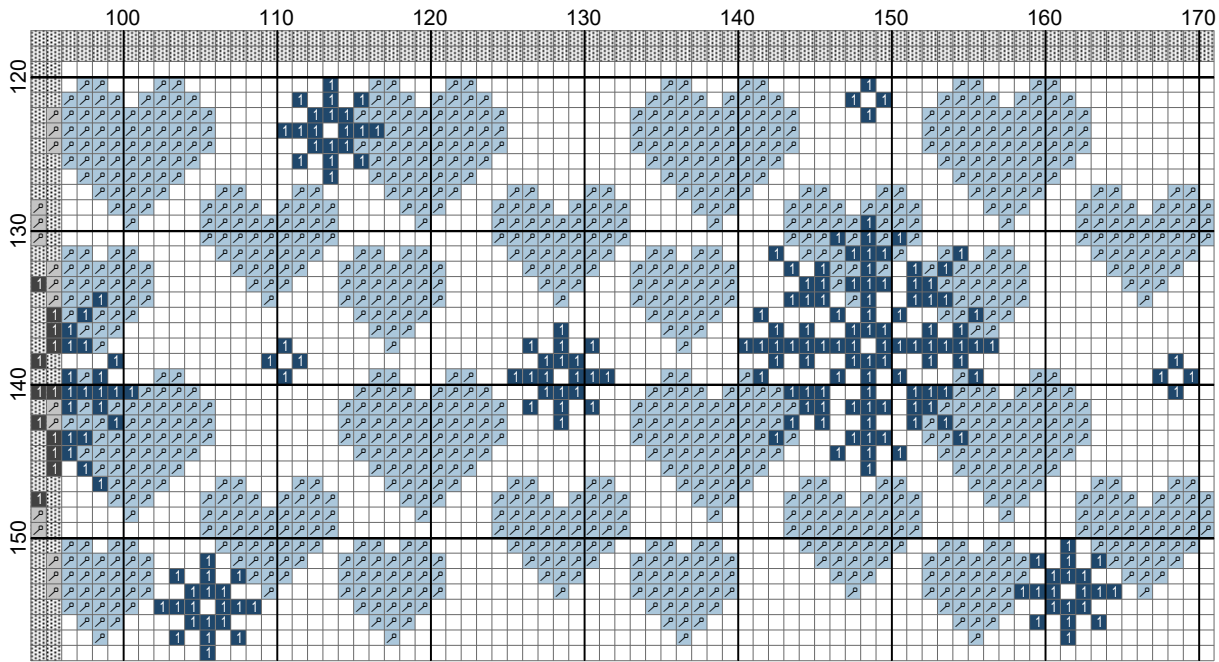


- Legend:
- DMC-666
  - DMC-304
  - DMC-209
  - DMC-996
  - DMC-3325
  - DMC-803
  - DMC-702
  - DMC-973
  - DMC-947
  - DMC-977
  - DMC-3826
  - DMC-739
  - DMC-437
  - DMC-5200

Non solo Punto Croce di Natalia



Cuori 4 stagioni by Natalia

















Non solo Punto Croce di Natalia

# Cuori 4 stagioni

**Author:** Natalia  
**Copyright:** Non solo Punto Croce di Natalia  
**Grid Size:** 171W x 158H  
**Design Area:** 12,21" x 11,29" (171 x 158 stitches)

## Legend:

	[3]	DMC-666	ANC-46	GAM-0119	christmas red - br	(3228 stitches, 2,0 skeins)
	[2]	DMC-304	ANC-19	GAM-4055	christmas red - md	(316 stitches, 0,1 skeins)
	[2]	DMC-209	ANC-109	GAM-3107	lavender - dk	(169 stitches, 0,1 skeins)
	[2]	DMC-996	ANC-433	GAM-3121	electric blue - md	(306 stitches, 0,1 skeins)
	[2]	DMC-3325	ANC-129	GAM-3051	baby blue - lt	(2908 stitches, 1,2 skeins)
	[2]	DMC-803	ANC-1036	GAM-	baby blue - ul vy dk	(516 stitches, 0,2 skeins)
	[2]	DMC-702	ANC-239	GAM-0210	kelly green	(484 stitches, 0,2 skeins)
	[2]	DMC-973	ANC-290	GAM-0042	canary - br	(3383 stitches, 1,4 skeins)
	[2]	DMC-947	ANC-329	GAM-3200	burnt orange	(795 stitches, 0,3 skeins)
	[2]	DMC-977	ANC-1002	GAM-3210	golden brown - lt	(208 stitches, 0,1 skeins)
	[2]	DMC-3826	ANC-365	GAM-0926	golden brown	(96 stitches, 0,1 skeins)
	[2]	DMC-739	ANC-366	GAM-0018	tan - ul vy lt	(260 stitches, 0,1 skeins)
	[2]	DMC-437	ANC-362	GAM-0054	tan - lt	(140 stitches, 0,1 skeins)
	[2]	DMC-5200	ANC-1	GAM-0415	snow white	(838 stitches, 0,3 skeins)