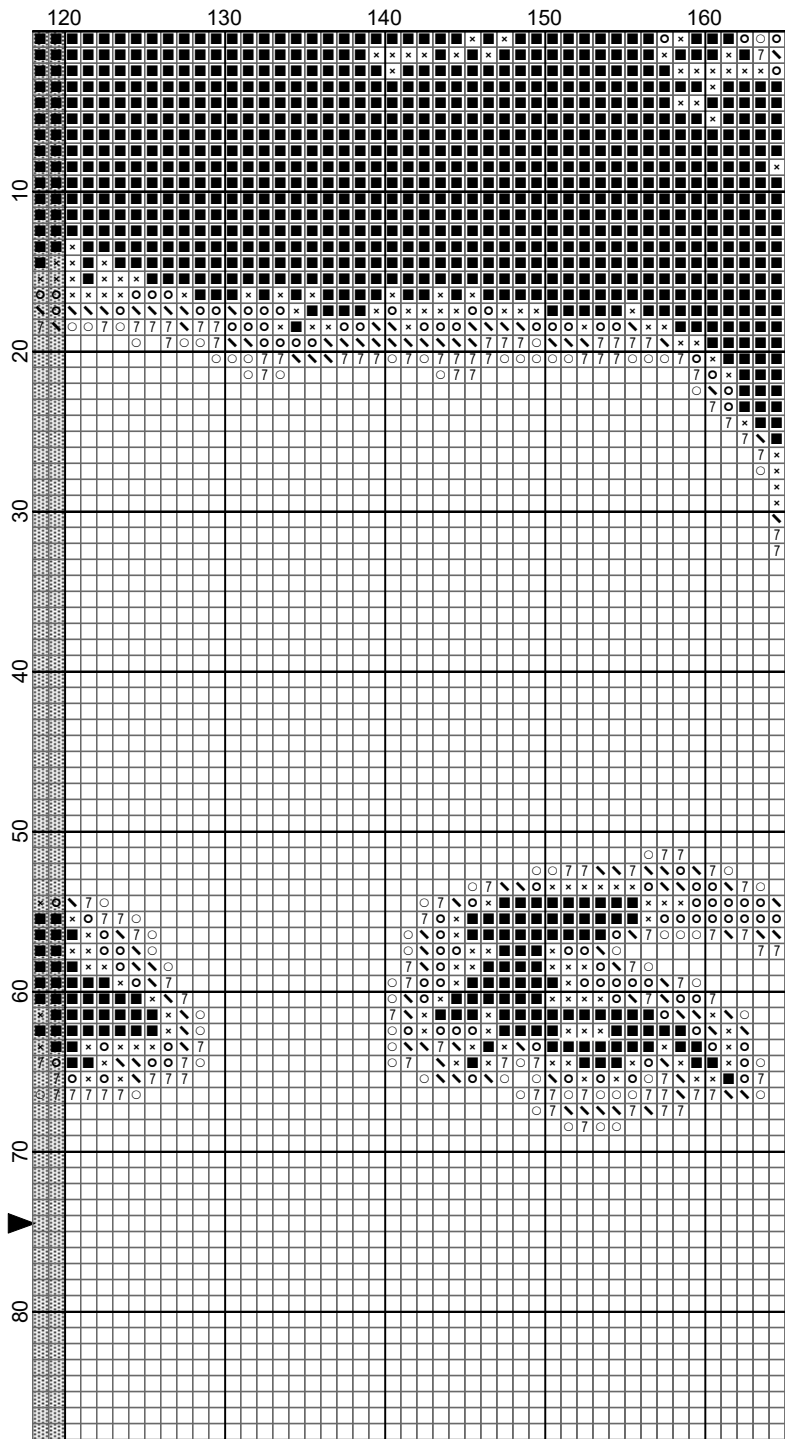


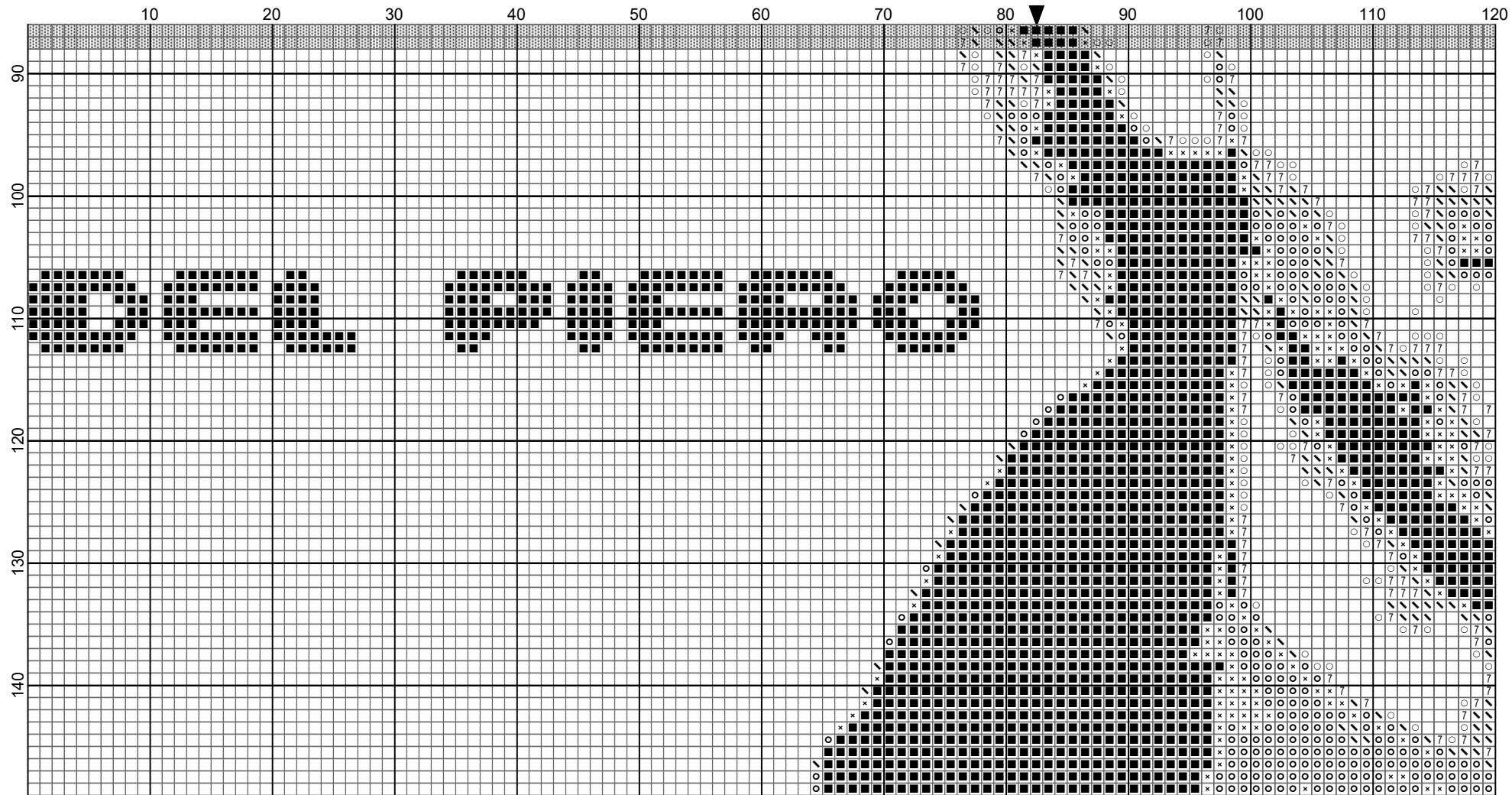
- Legend:
- DMC-3865
 - ◻ DMC-762
 - ◻ DMC-415
 - ◻ DMC-318
 - ◻ DMC-413
 - ◻ DMC-310
- Backstitches:
- ◻ DMC-3865



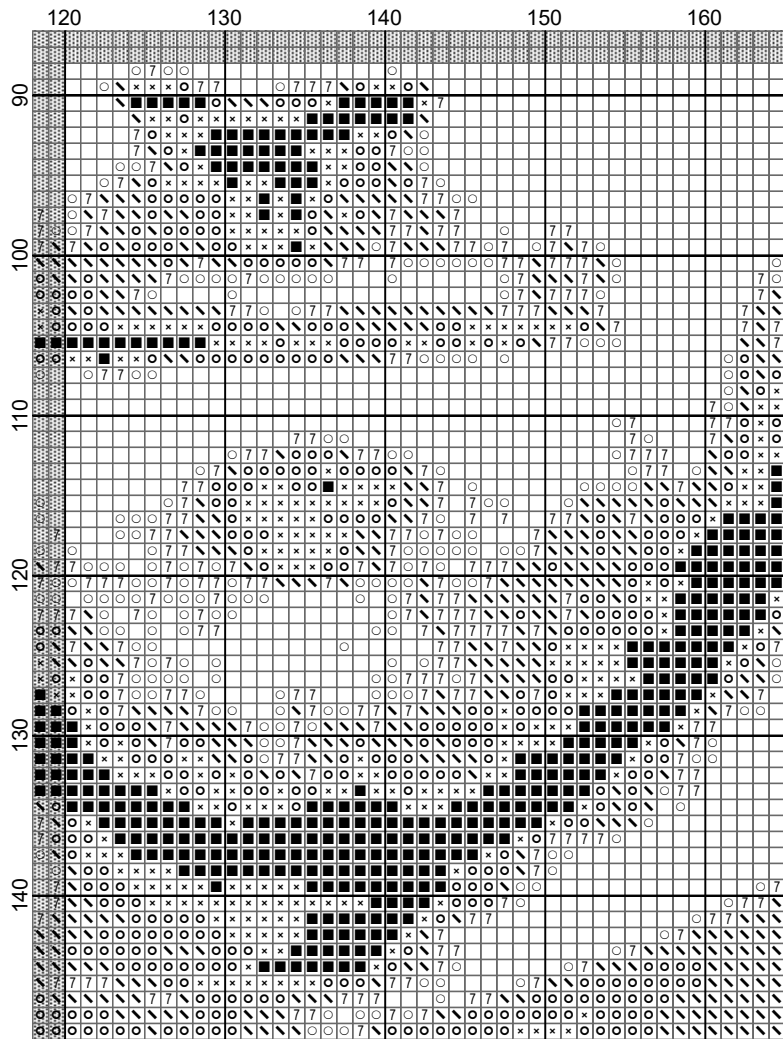
Non solo Punto Croce di Natalia



Non solo Punto Croce di Natalia



Non solo Punto Croce di Natalia















Non solo Punto Croce di Natalia

Alessandro Del Piero, foto, 165x149


Author: Natalia
Copyright: Non solo Punto Croce di Natalia
Grid Size: 165W x 149H
Design Area: 11,79" x 10,64" (165 x 149 stitches)

Legend:

  [2] DMC-3865 ANC-2 GAM-3250 winter white (510 stitches, 0,2 skeins)
  [2] DMC-762 ANC-234 GAM-3231 pearl gray - vy lt (600 stitches, 0,2 skeins)
  [2] DMC-415 ANC-848 GAM-3255 pearl gray (938 stitches, 0,4 skeins)

  [2] DMC-318 ANC-399 GAM-0004 steel gray - lt (976 stitches, 0,4 skeins)
  [2] DMC-413 ANC-401 GAM-3233 pewter gray - dk (792 stitches, 0,3 skeins)
  [2] DMC-310 ANC-403 GAM-0420 black (4289 stitches, 1,7 skeins)

Backstitch Lines:

 DMC-3865 winter white (0,43 inches, 0,2 skeins)