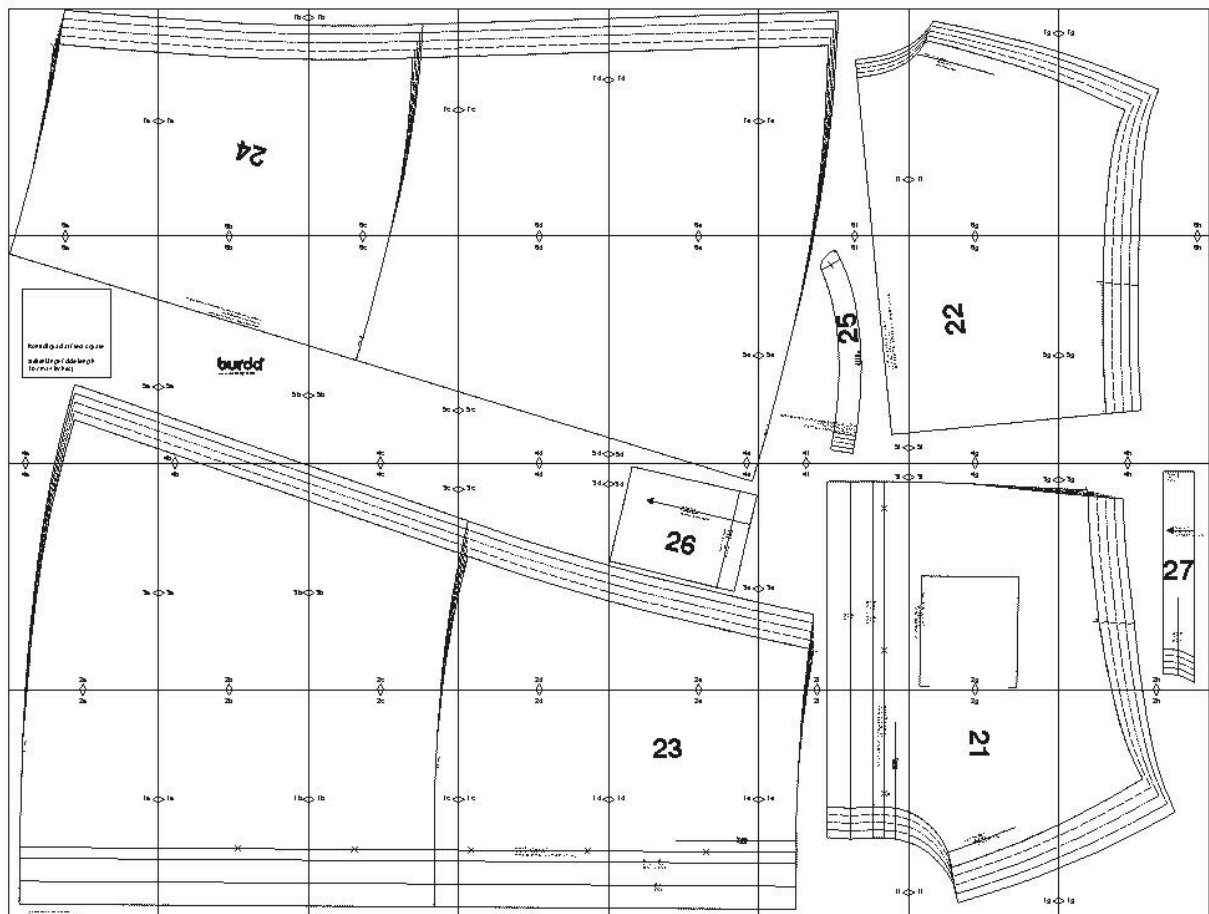


# burda style Download-Schnitt

Modell 119 burda style 04/2019



Copyright 2019 by Verlag Aenne Burda GmbH & Co. KG, Hubert-Burda Platz 2, D-77652 Offenburg

Sämtliche Modelle, Schnittteile und Zeichnungen stehen unter Urheberschutz, gewerbliches Nacharbeiten ist untersagt.

Der Verlag haftet nicht für Schäden, die durch unsachgemäße Handhabung des Schnitts, der Materialien, unsachgemäße Ausführung der Tipps und Anleitungen oder unsachgemäße Nutzung der Modelle entstehen.

2a

Mod. 119

1a

2b

1a

1b

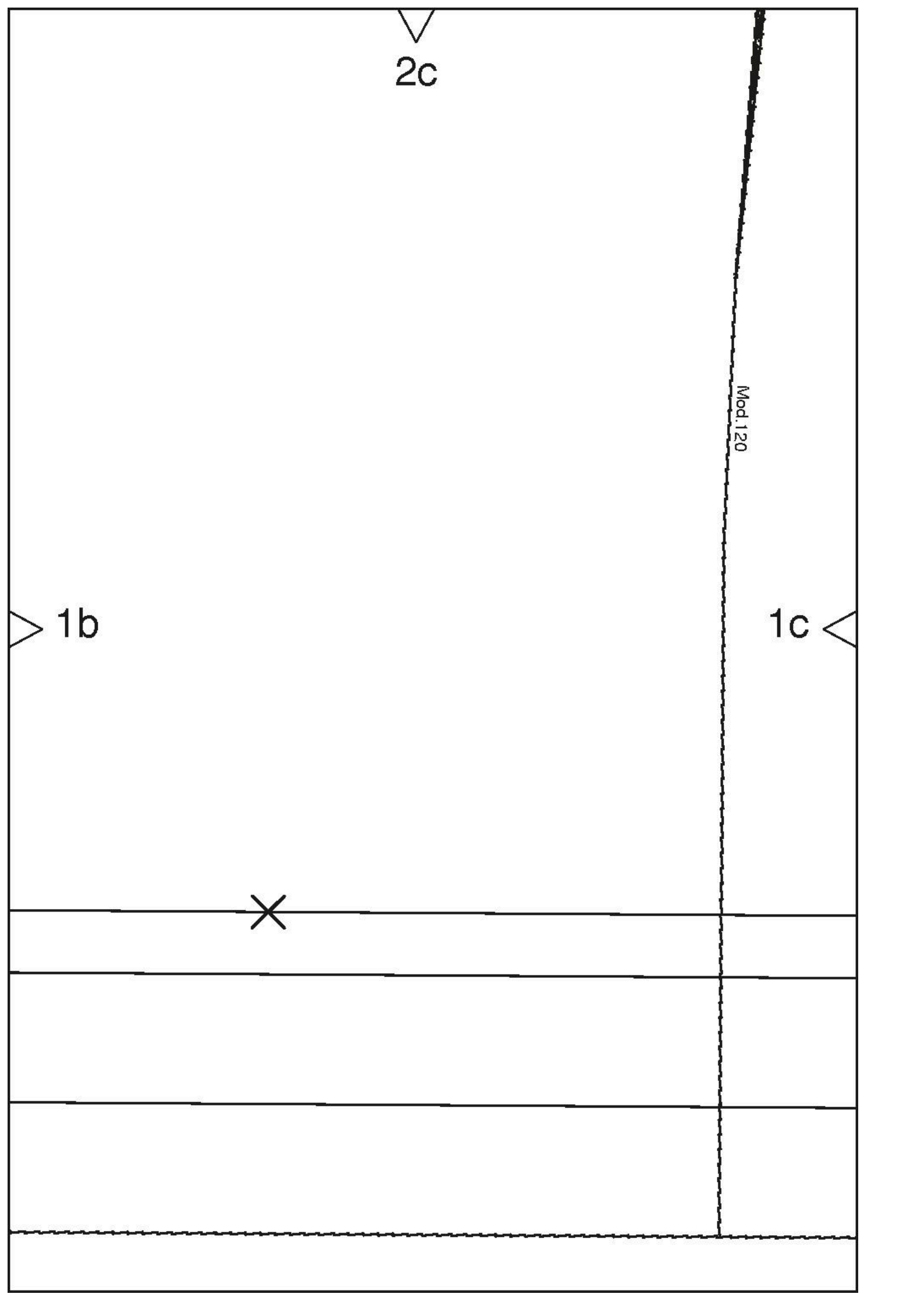


2c

Mod. 120

1b

1c



2d

1c

1d

vordere Mitte Fadenlauf  
center front straight grain  
ПЕРЕДНЯЯ СЕРЕДИНА НАПРАВЛЕНИЕ НИТИ

2e

# 23

1d

1e

54



Besatz	Umbruch
facing	fold
ОБТАЧКА	СГИБ

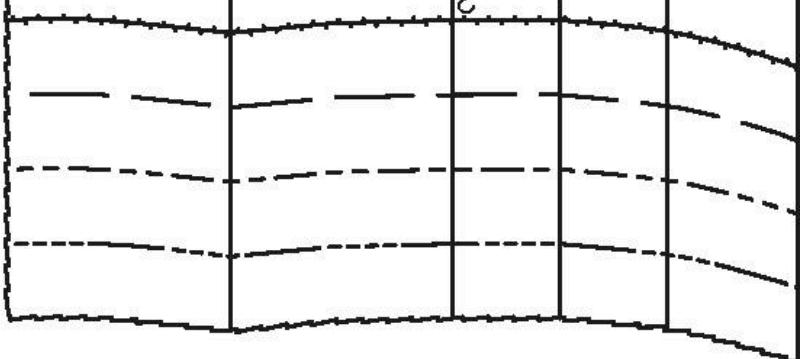
Umbruch
fold
СГИБ



vordere Mitte Fadenlauf  
center front straight grain  
ПЕРЕДНЯЯ СЕРЕДИНА НАПРАВЛЕНИЕ НИТИ



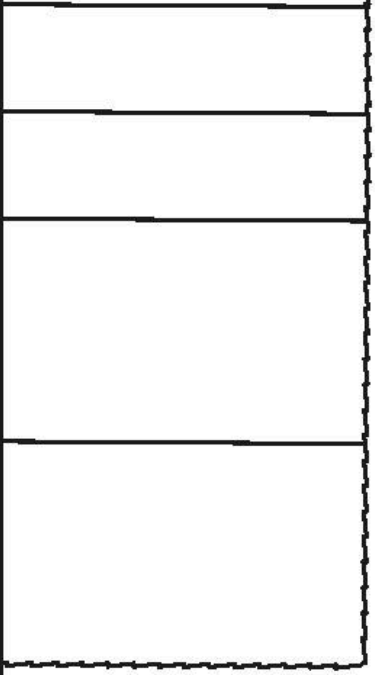
2



2f

1f

1e



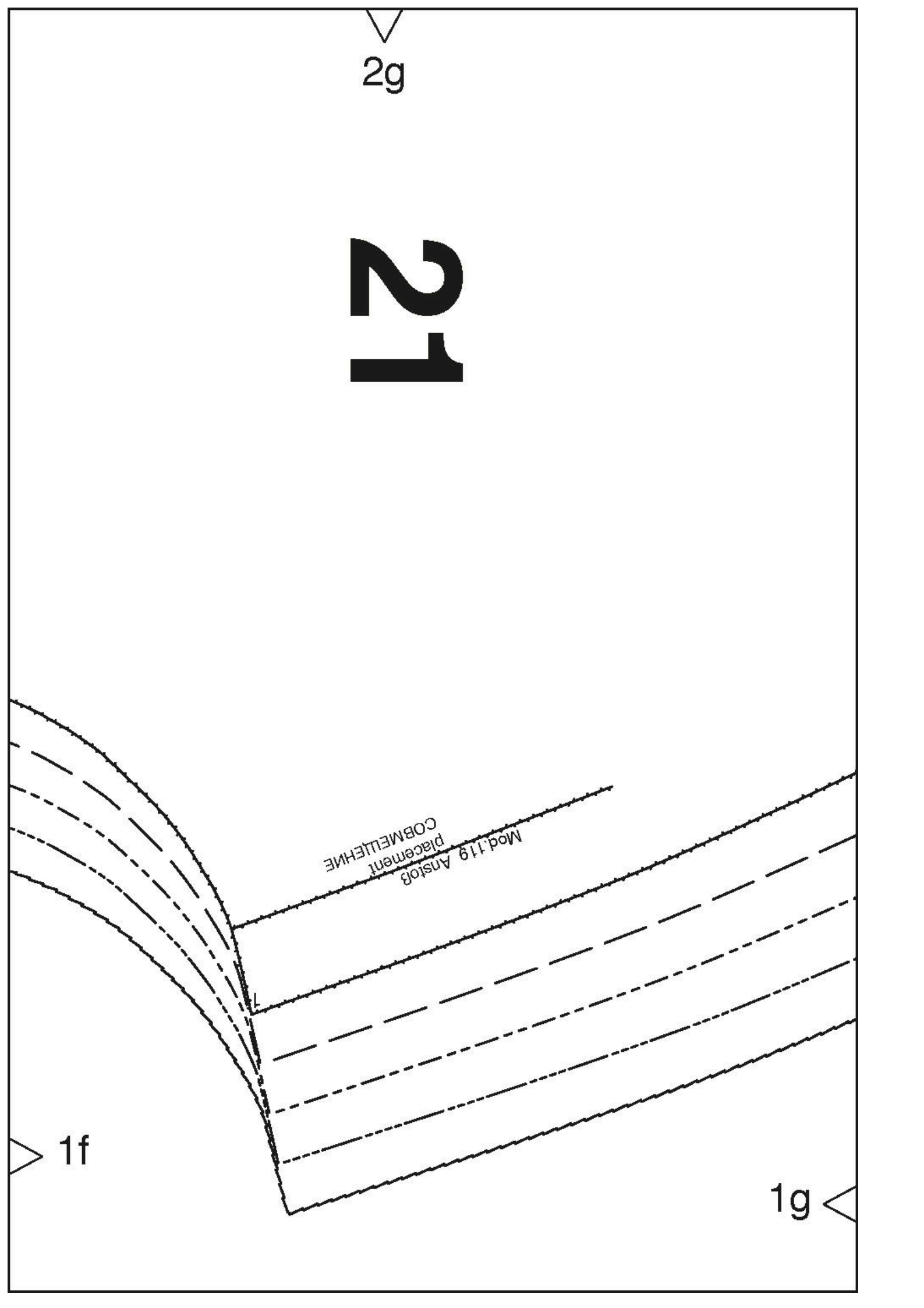
2g

21

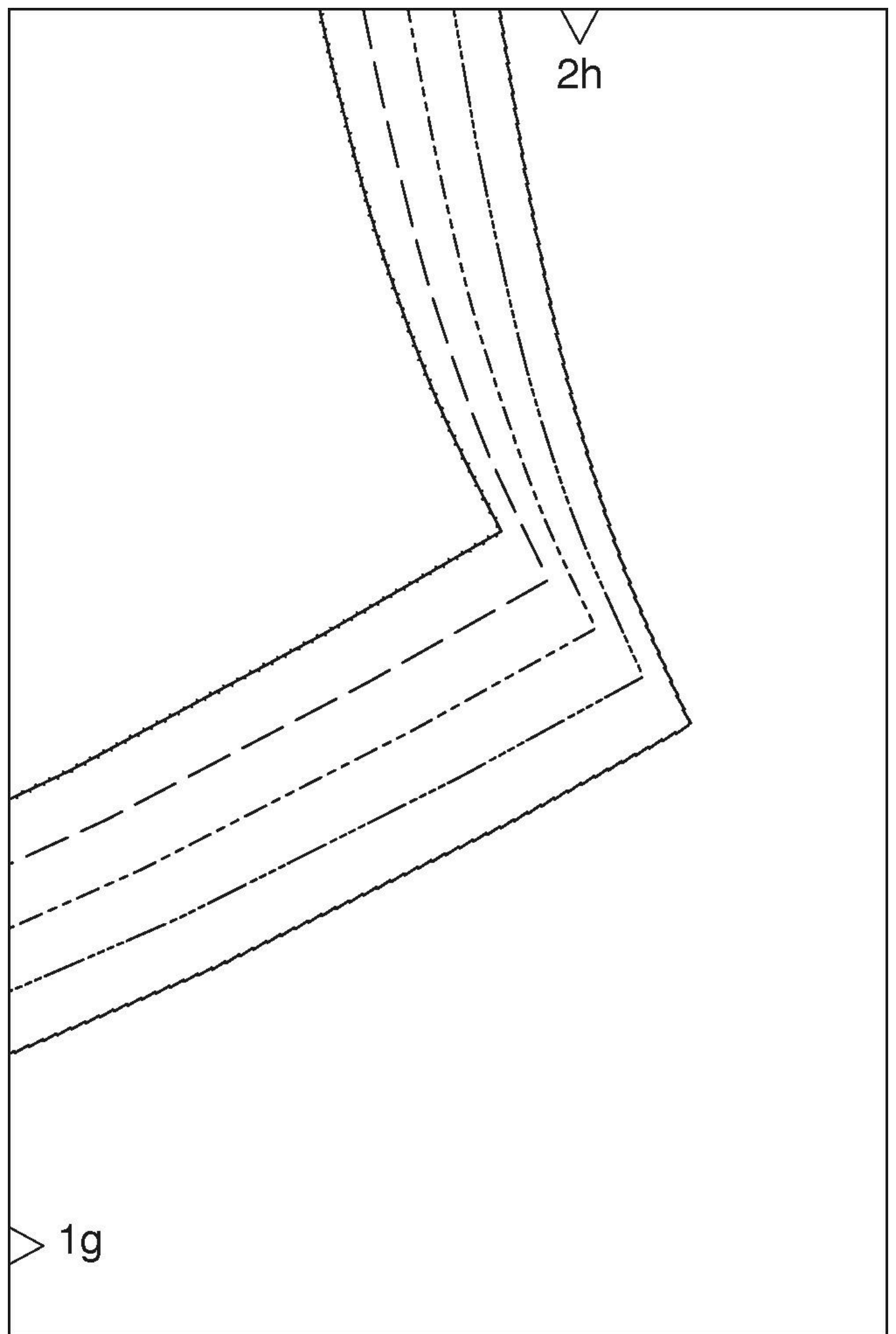
Mod. 119 Anstieg  
placement  
COBMELEHNE

1f

1g



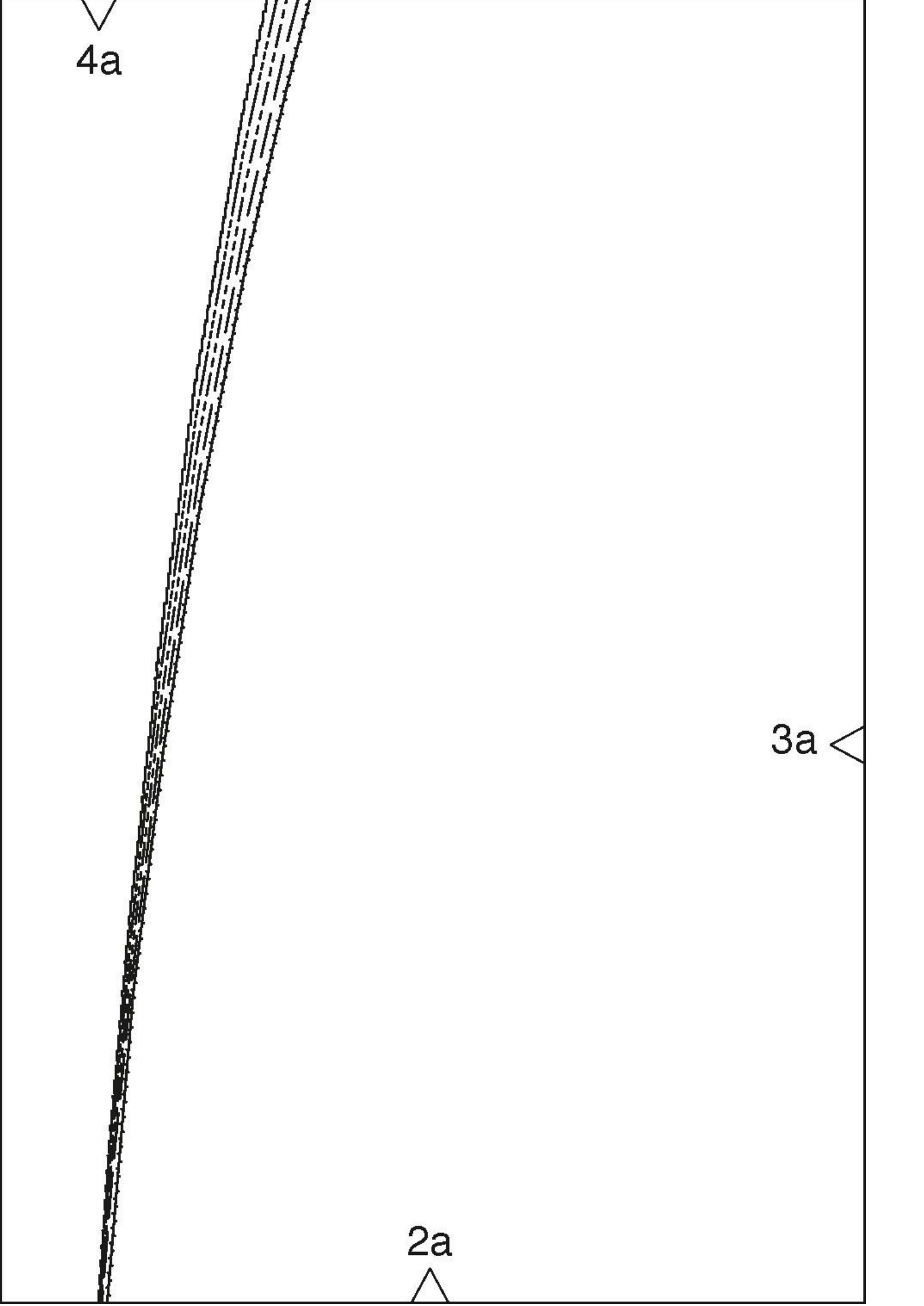




4a

3a

2a

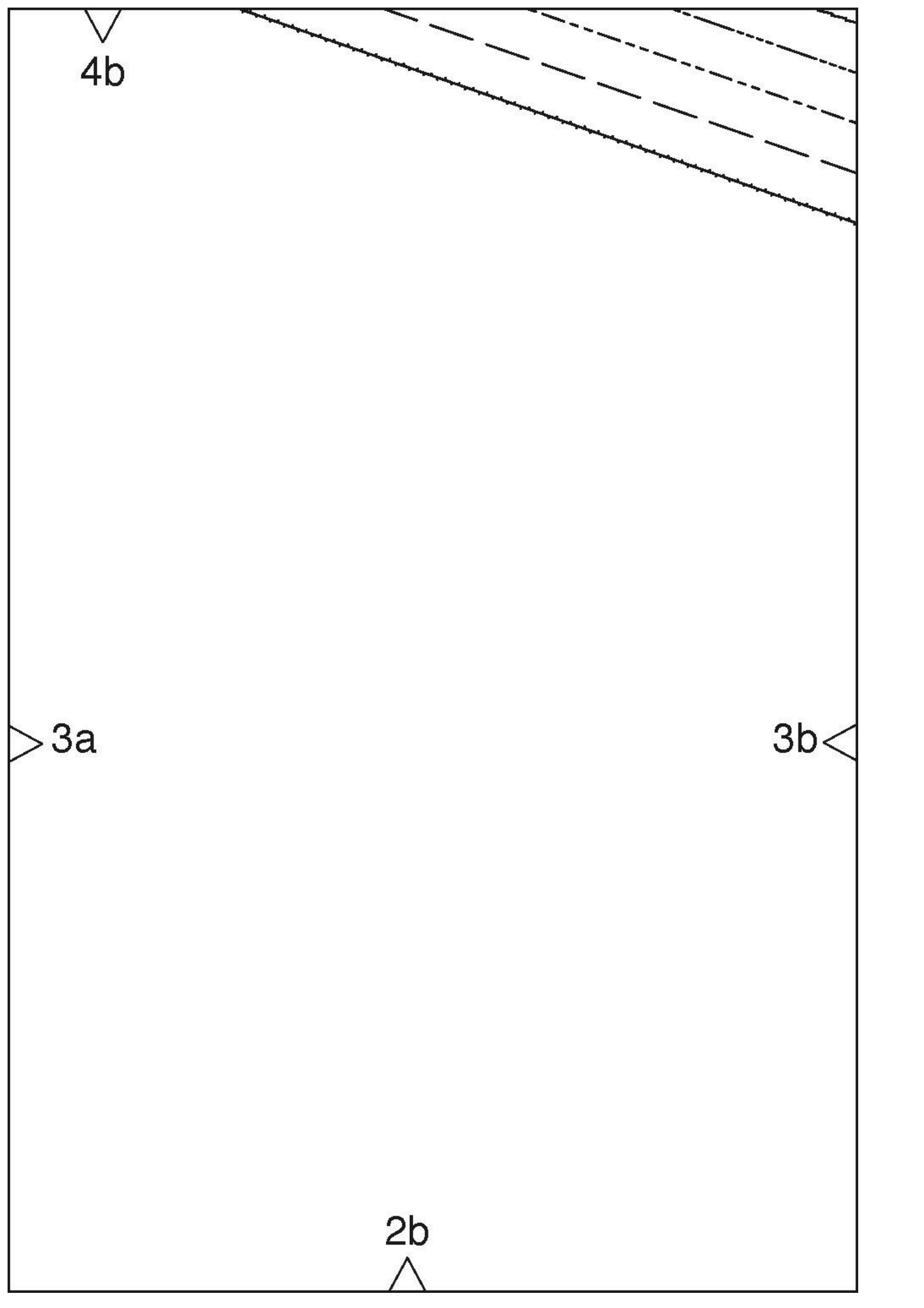


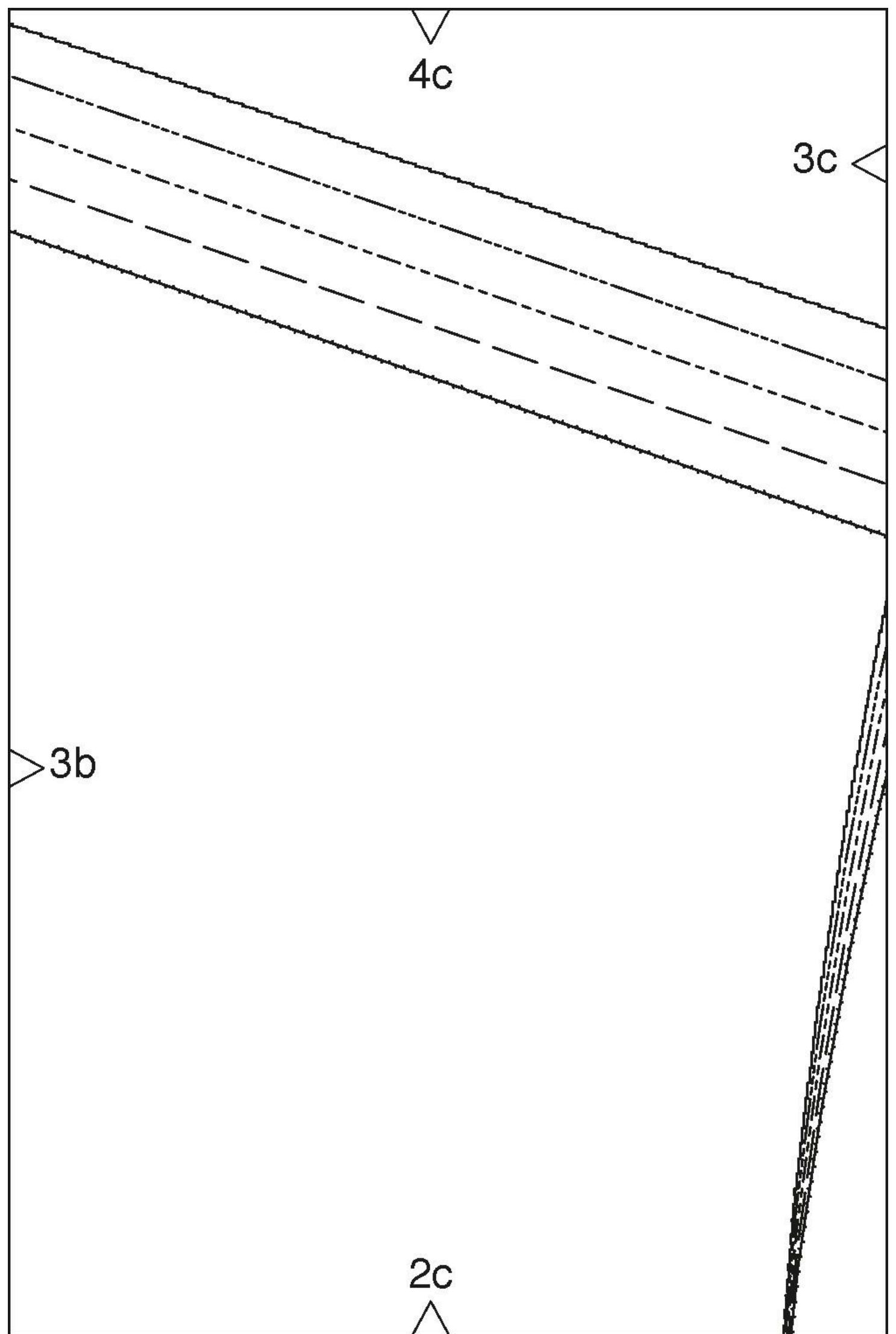
4b

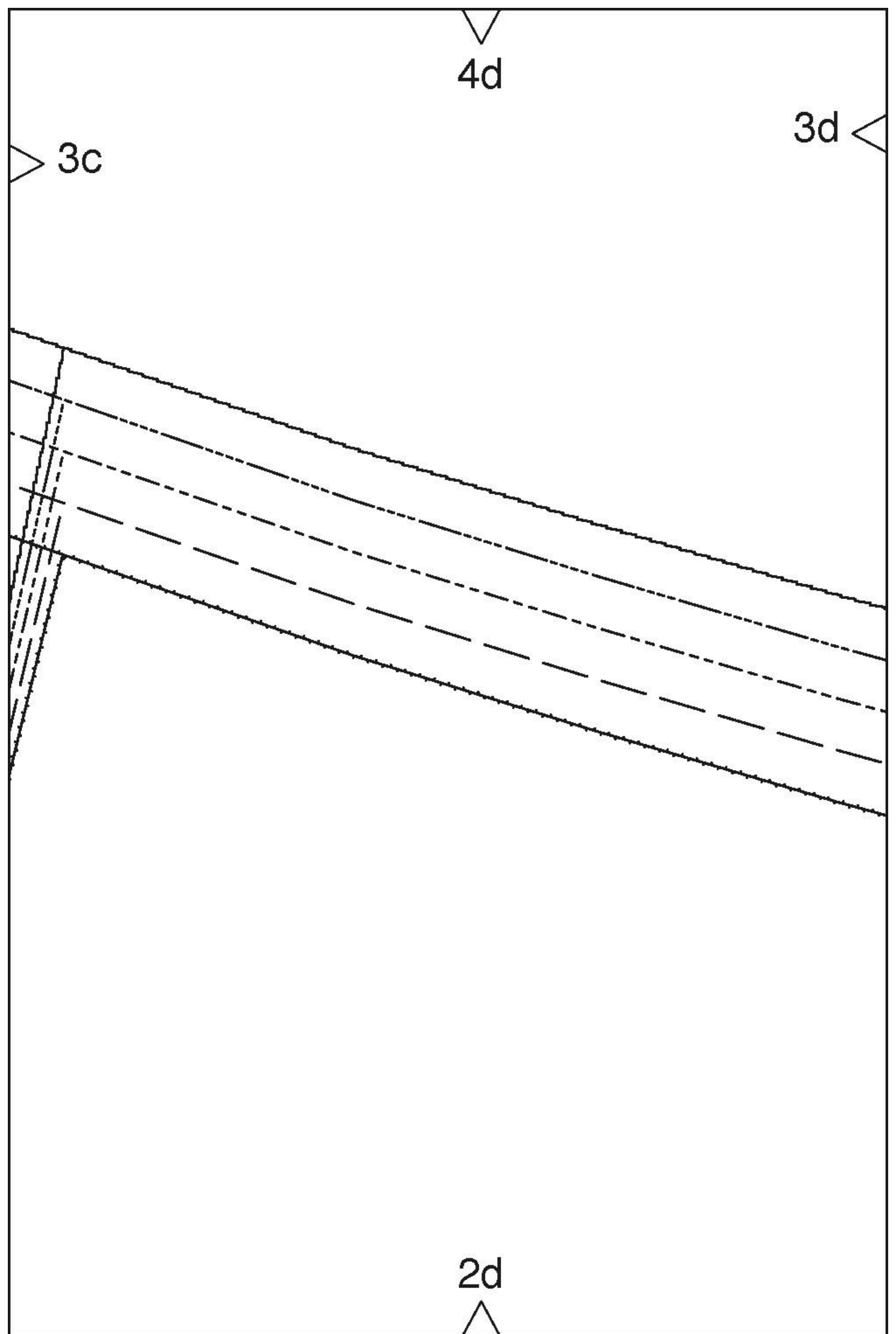
3a

3b

2b







4e

3d



Fadenlauf  
straight grain  
НАПРАВЛЕНИЕ НИТИ

26

Besatz facing  
обтачка  
Umbruch fold  
сгиб

3e

2e

3f

4f



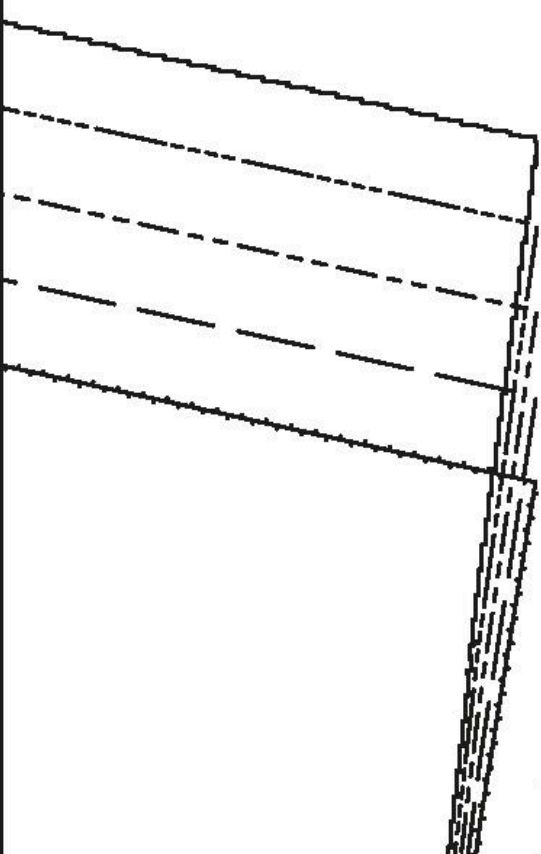
Besatz  
facing  
OSTAЧKA

Umbruch  
fold  
CTMB

3e

2f

3



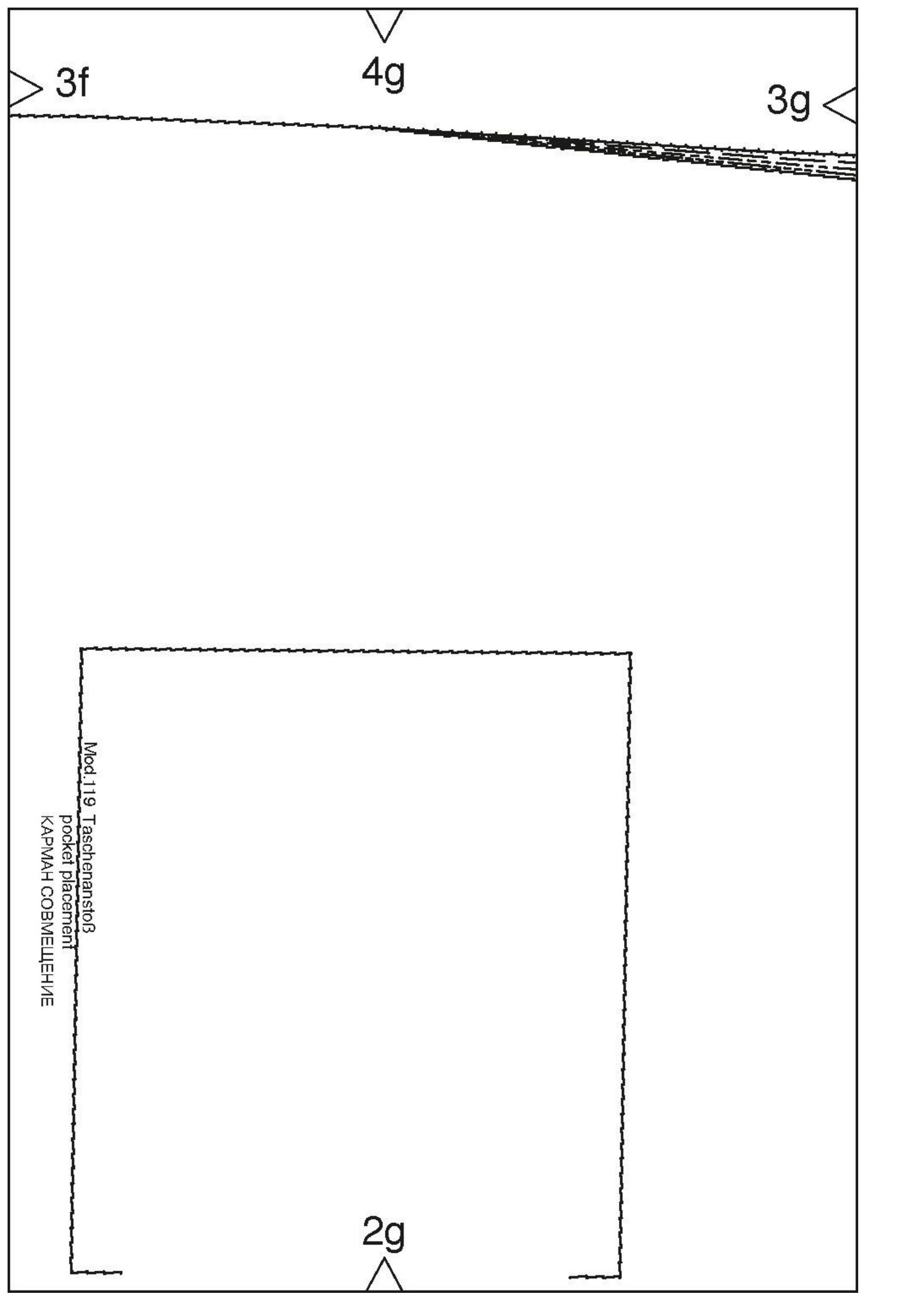
3f

4g

3g

2g

Mod.119 Taschenanstoß  
pocket placement  
КАРМАН СОБИРАТЕЛЬНИК





4h

3g

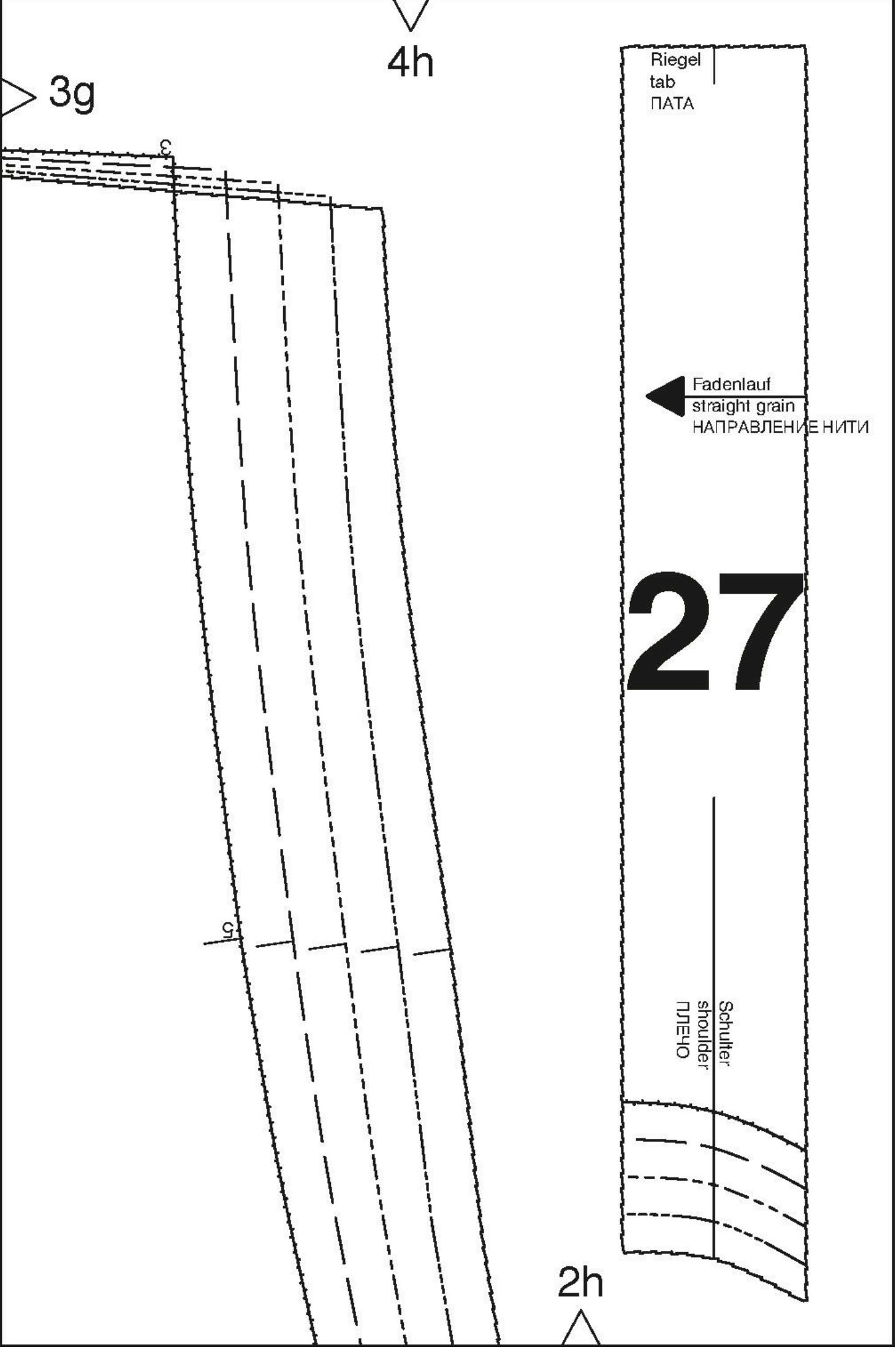
Riegel  
tab  
ПАТА

Fadenlauf  
straight grain  
НАПРАВЛЕНИЕ НИТИ

# 27

Schulter  
shoulder  
ПЛЕЧО

2h



6a

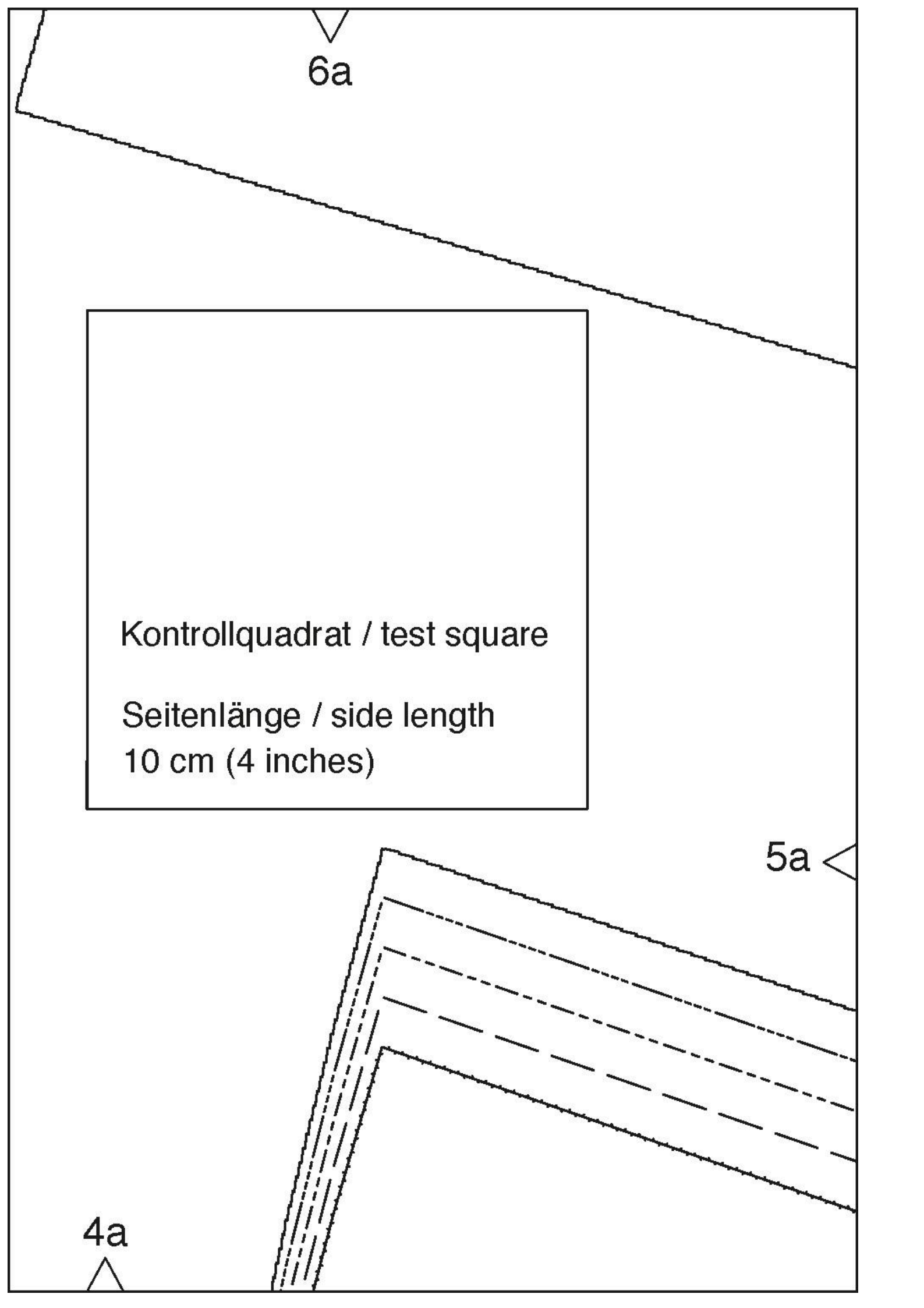
Kontrollquadrat / test square

Seitenlänge / side length

10 cm (4 inches)

5a

4a



6b

ИЛИН ЭИНЭЛЭГЛЭХИЙН ТАХИ НАЛПАВЛЭХИЭ НИТИ  
rückwärtige Mitte Stoffbruch Fadenlauf  
center back fold straight grain

**burda**<sup>®</sup>  
www.burdastyle.de

5a

5b

4b

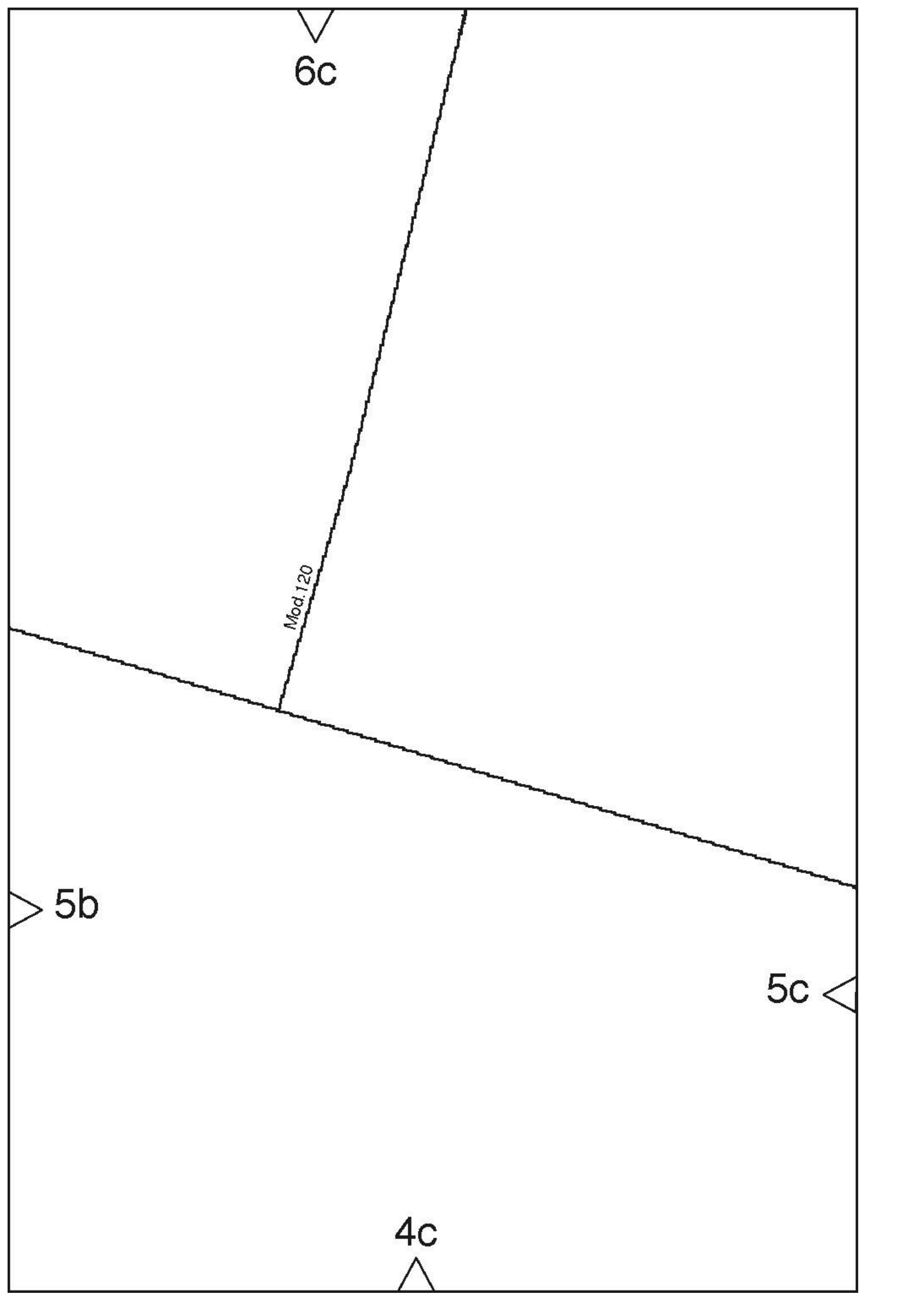
6c

Mod. 120

5b

5c

4c





6d

5c

4d

5d

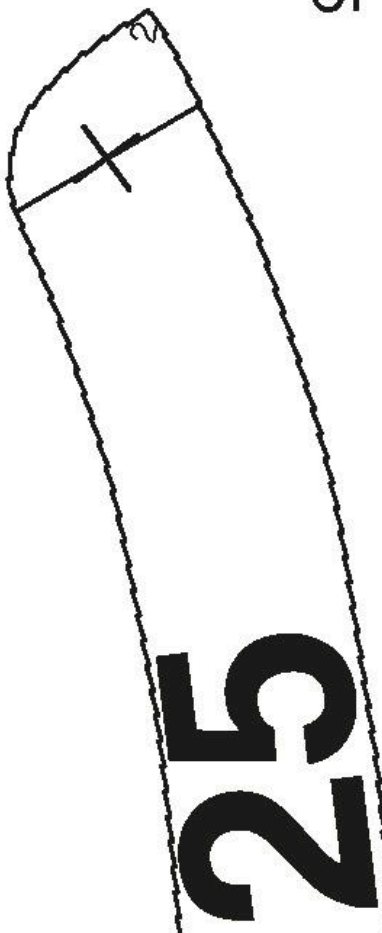
6e

5e

5d

4e

6f



**25**

36  
 |||||  
 44

rückwärtige Mitte Stoffbruch Fadenlauf  
 center back fold straight grain  
 ЗАДНЯЯ СЕРЕДИНА СГИБ ТКАНИ НАПРАВЛЕНИЕ НИТИ

5e

rückwärtige Mitte Stoffbruch Fadenlauf  
 center back fold straight grain  
 ЗАДНЯЯ СЕРЕДИНА СГИБ ТКАНИ НАПРАВЛЕНИЕ НИТИ

Mod. 119

4f

5f

22

6g

5g

5f

4g



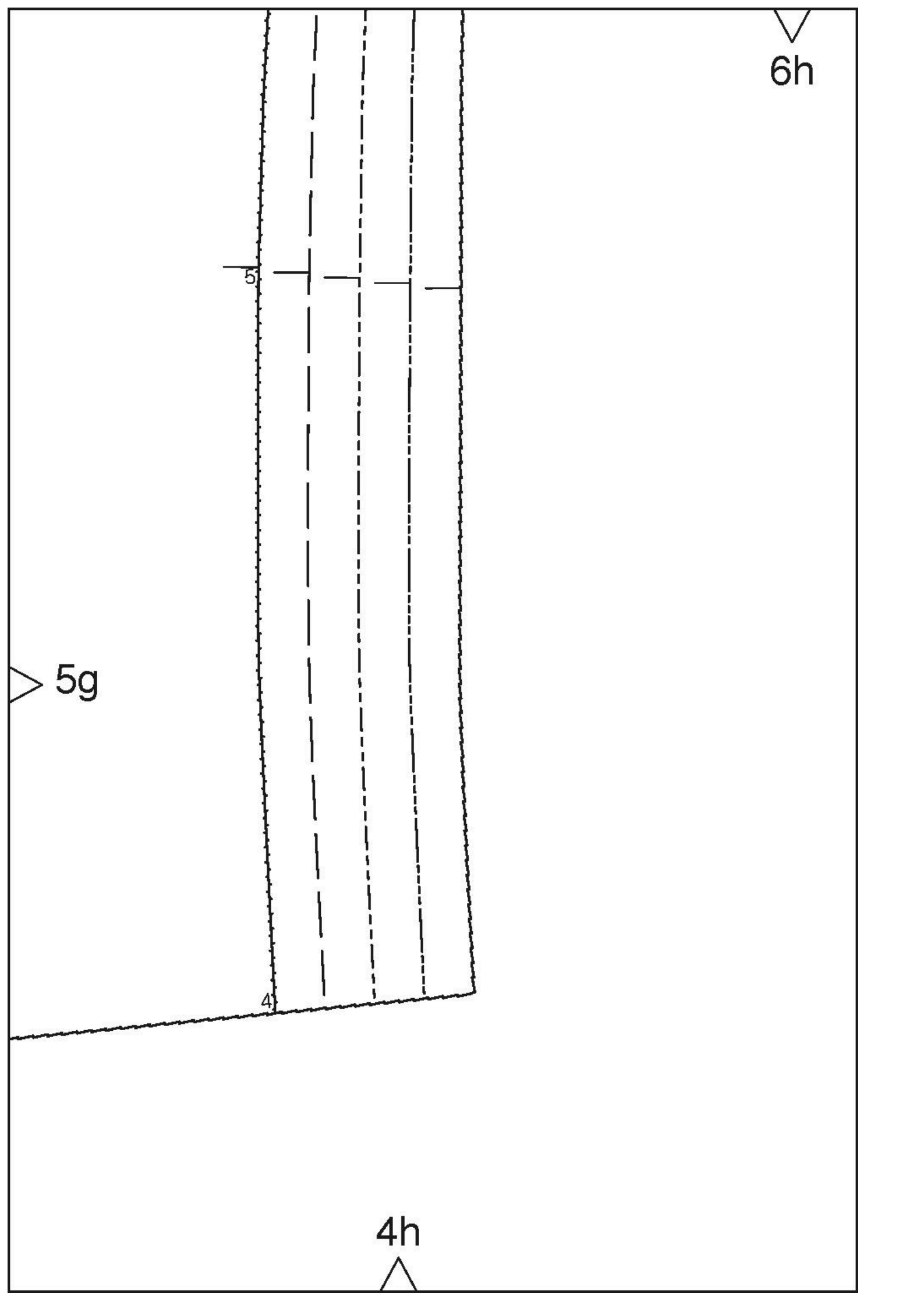
6h

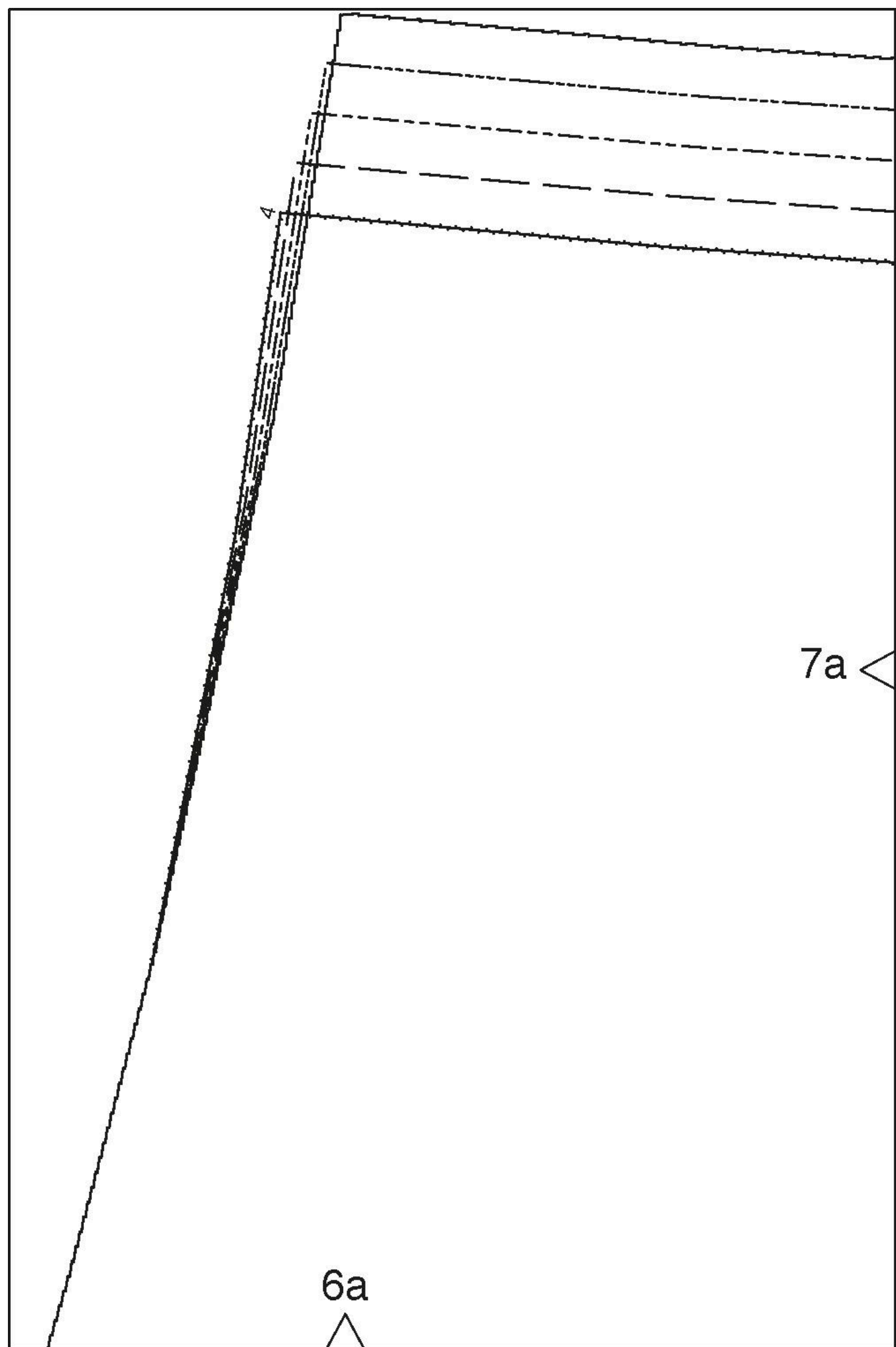
5

5g

4

4h





7b <

24

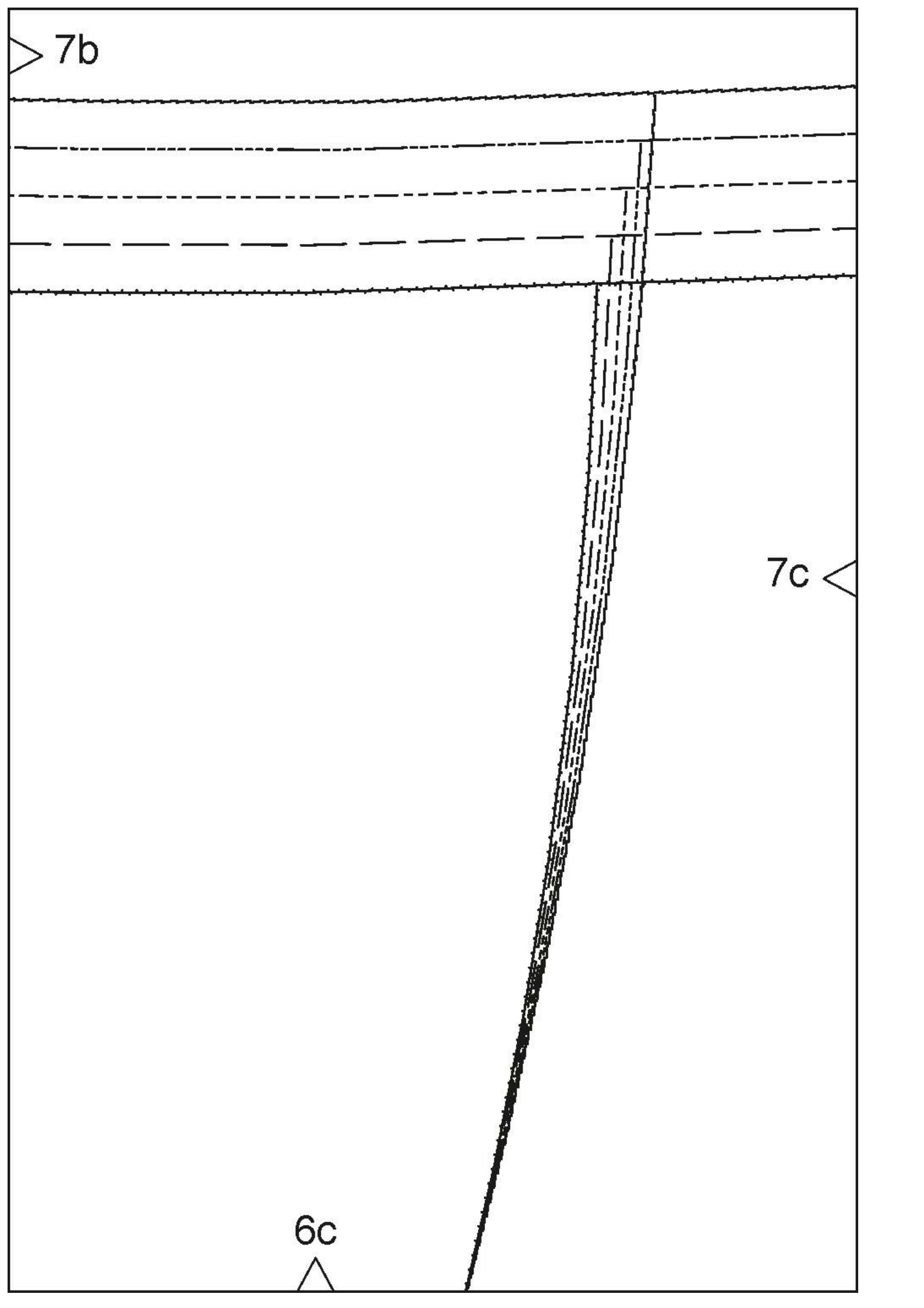
6b ^

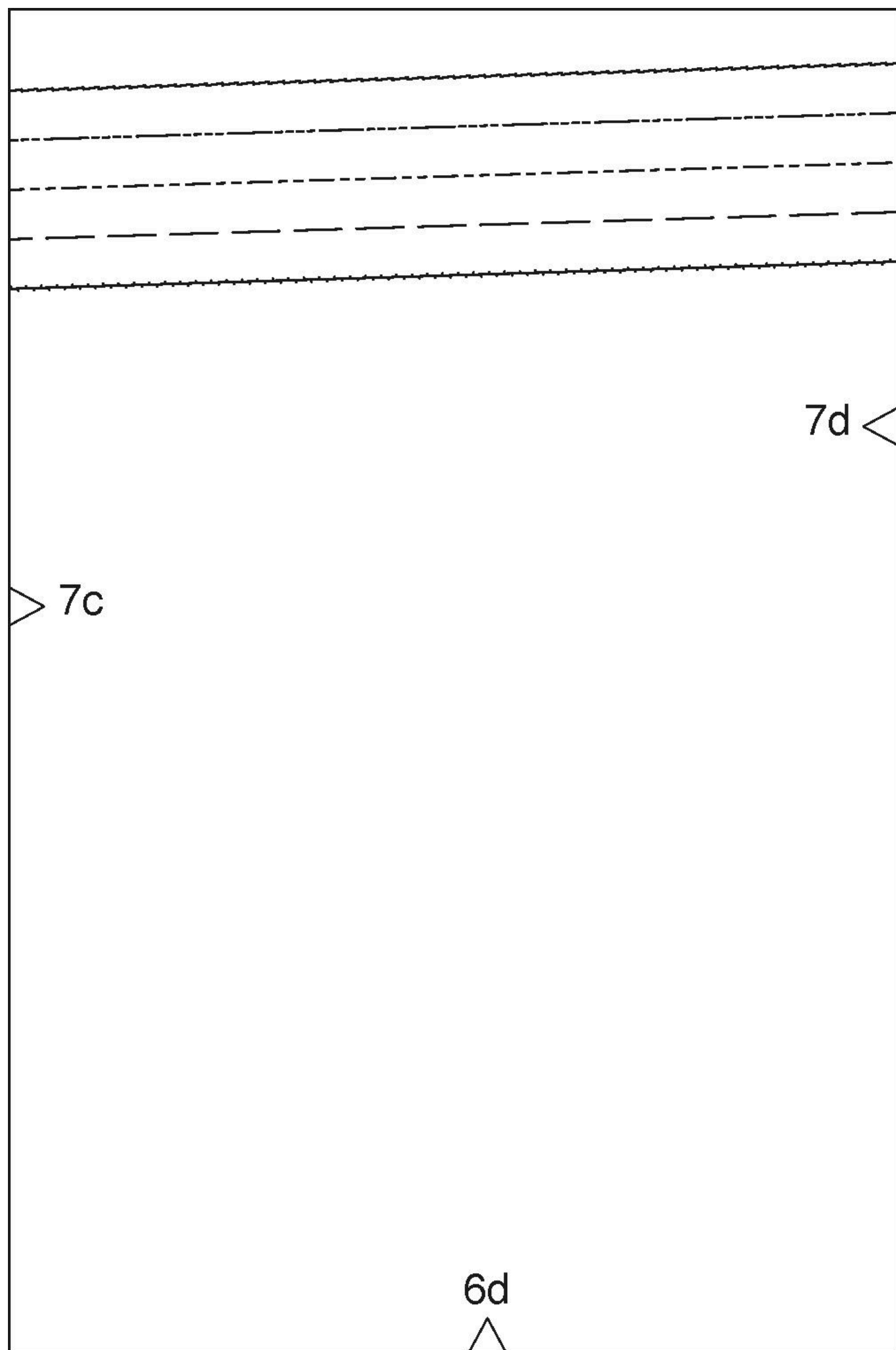
> 7a

7b

7c

6c

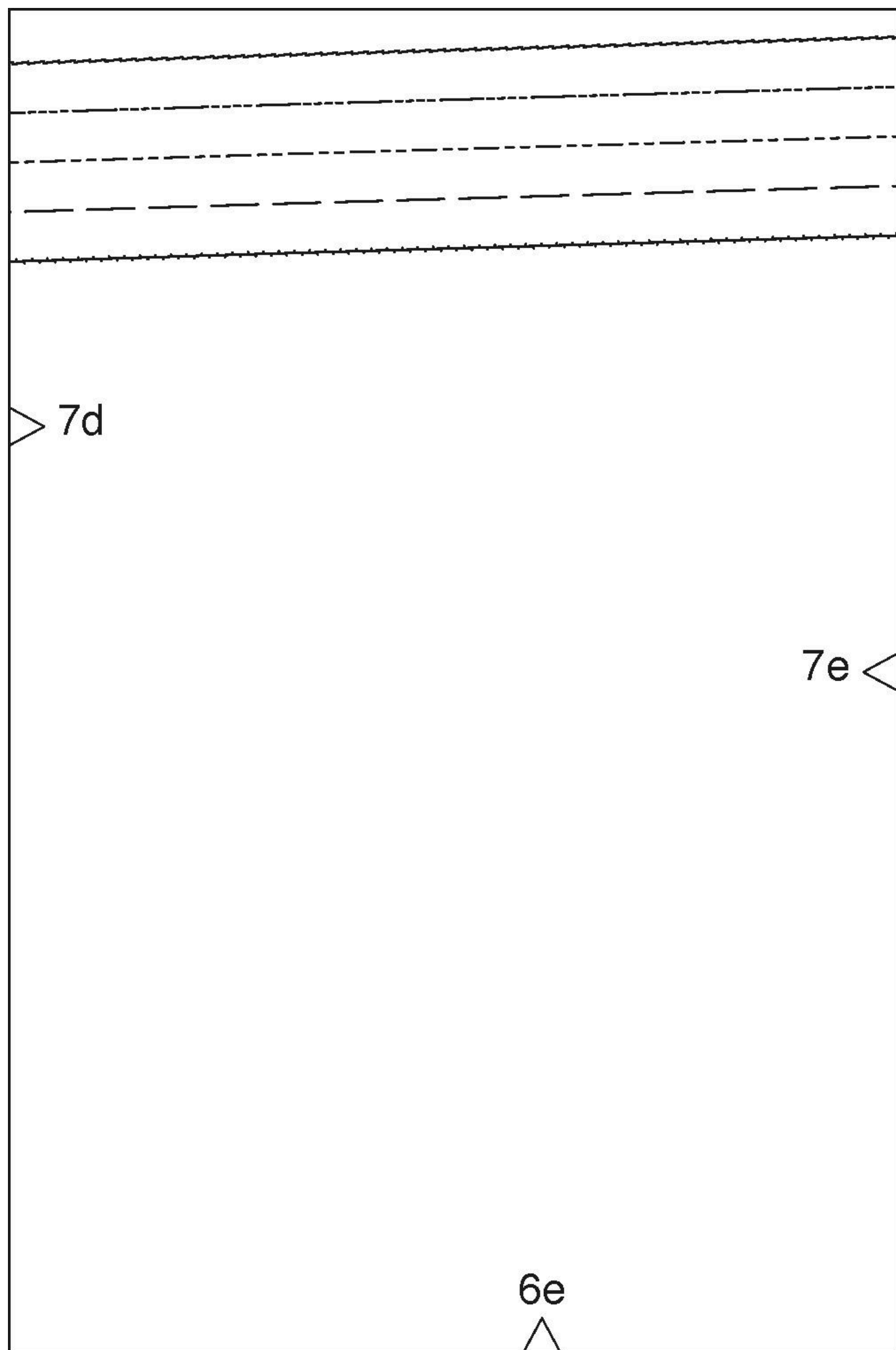




7c

6d

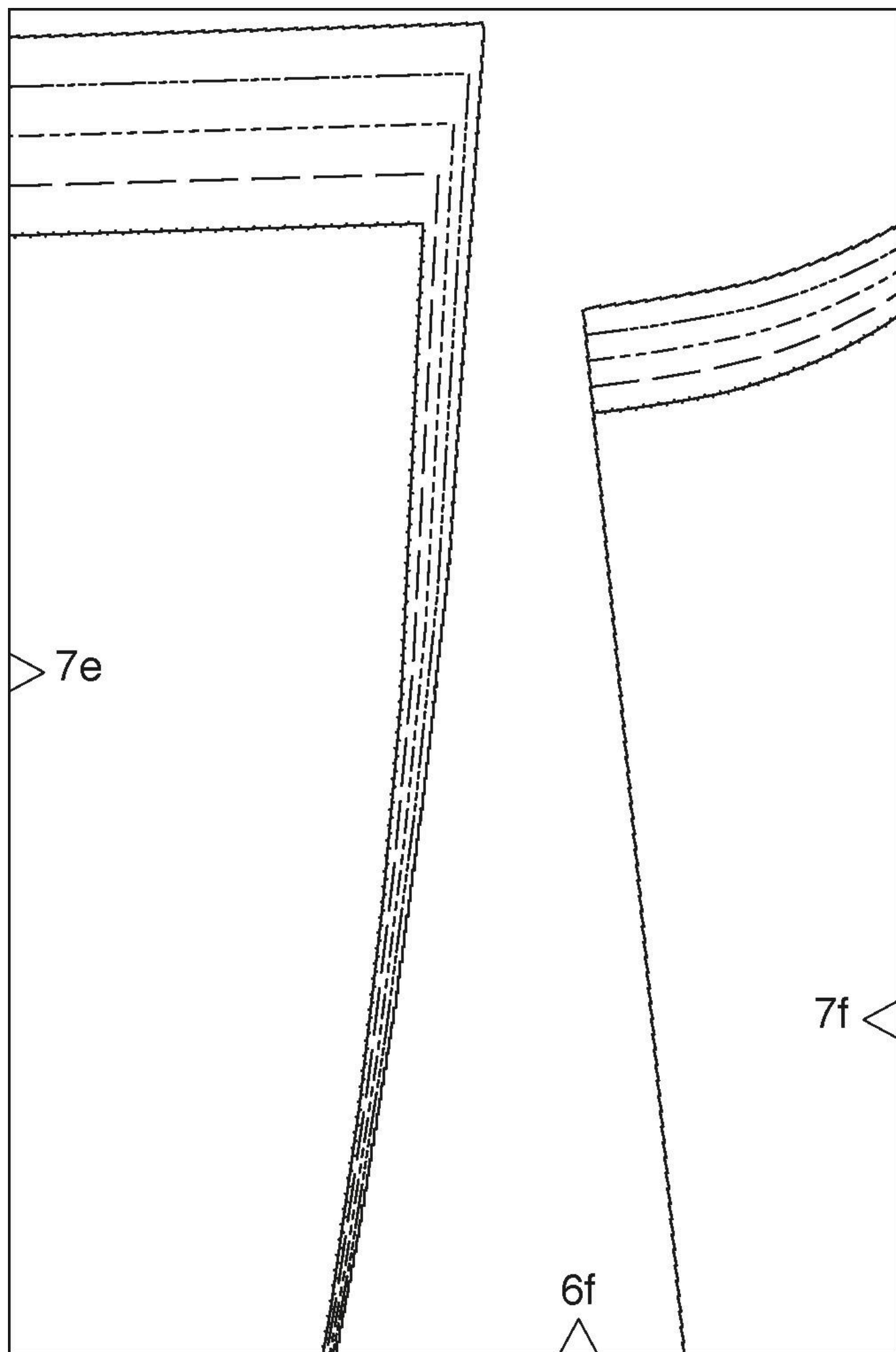
7d



7d

7e

6e



7g <

Mod.119 Anstoß  
placement  
СОВМЕЩЕНИЕ

> 7f

6g  
^



7g

6h

