

**HANDS ON
DESIGN**
a Habermann company

**BLOCK
PARTY**
from Hands On Design



hd-85 **Buzz**

©2016 Hands On Design

hd-85 **Block Party—Buzz**

Pincushion: block top & bottom 58x58, cut size 10x 10 (x2), side panel 34x232, cut size 8 x 23

Linen: 28ct Chalkboard Black linen (76171)

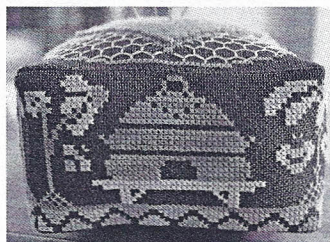
GAST: BlueJay, Cast Iron Skillet, Chalk, Gold Leaf, Ohio Lemon Pie, Sunflower, Willow **WDW:** Bright Leaf, Grasshopper

JABC Pin Set: jp200

GAST: www.thegentleart.com WDW: www.weeksdyeworks.com

JABC: www.justanotherbuttoncompany.com

Special Thanks to Model Stitcher—Tina Bush



Block Party is a series of 6 pincushion blocks. Each design has its own theme and features a JABC 4-letter work pinset. Chartpack includes finishing instructions & WDW wool. Fun & functional—watch as the pattern unfolds in your dimensional creation!

**HANDSON
DESIGN**
a Habermann company



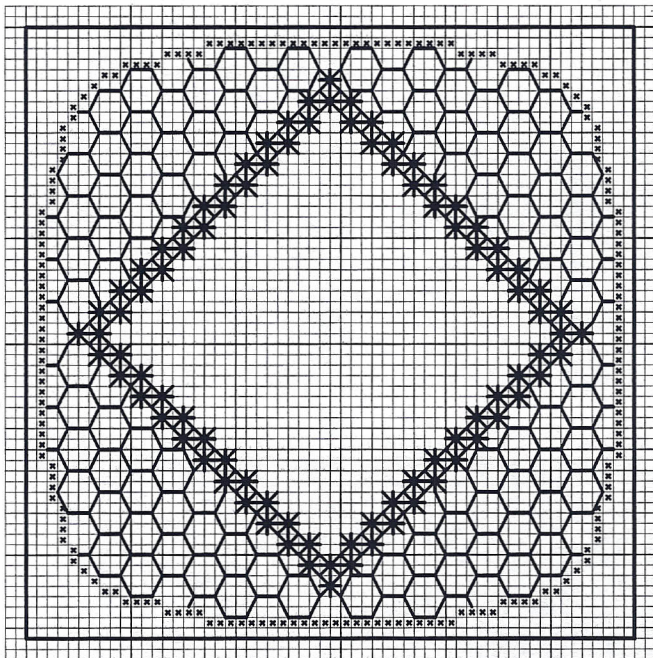
2400 Apache Dr., Sioux City, IA 51104

handsondesign@gmail.com ▪ handsondesign.blogspot.com

www.handsondesign.biz

"Block Party-Buzz" ©2016 by Cathy Habermann—No part of this publication and/or logo may be reproduced except by needle and thread or written permission from Hands On Design.

It is a copyright, not your right to copy.



Block top & bottom

- Back-stitch 2 square panels 58x58 with 2-ply Cast Iron Skillet
- Fill one of your square panels with the pattern to the left—cross stitch 2 over 2
- Smyrna cross the diamond with 2-ply Grasshopper—over 4, straight stitch the honeycomb with 2-ply Ohio Lemon Pie

Block Party—Buzz finishing

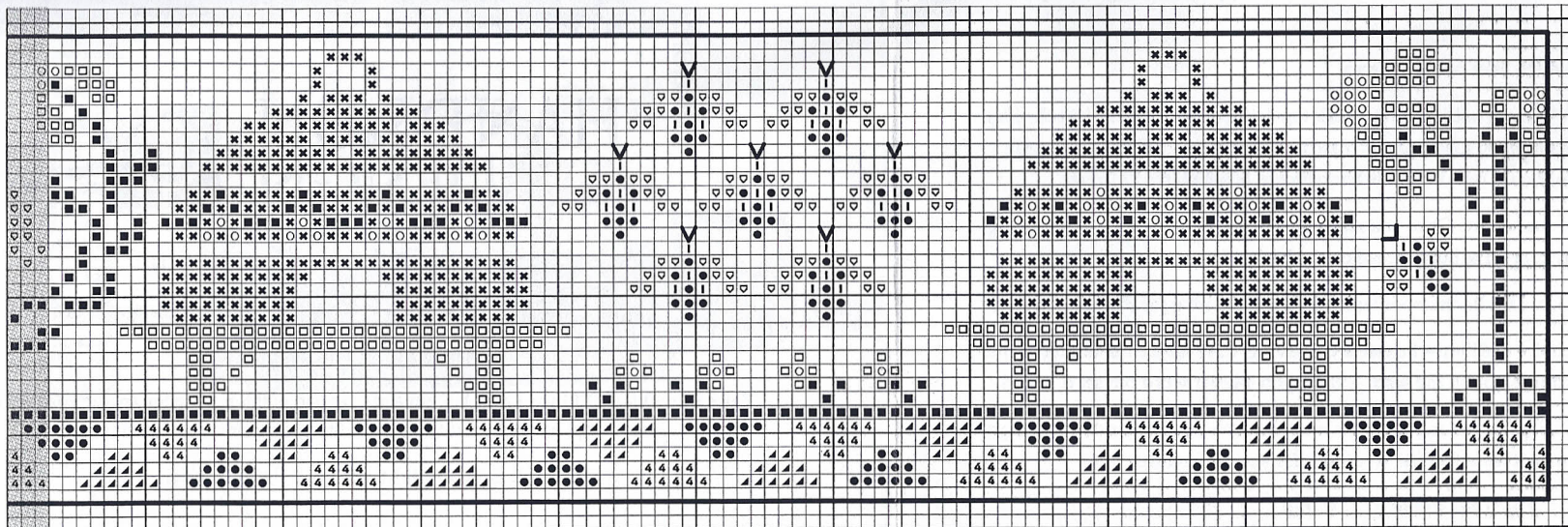
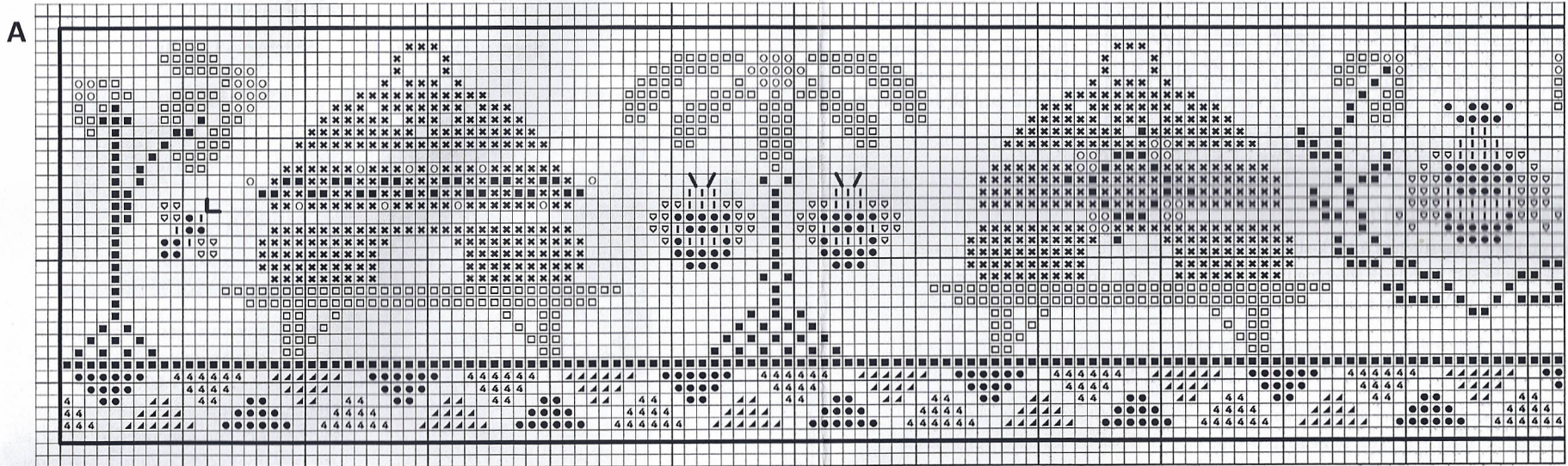
- Once you have cross-stitched & back-stitched all 3 block pieces (top, bottom & side panel), press & trim to 5/8" from back stitching line. (double check that you stitched the correct amount of backstitches—top & bottom panels are 58x58—side panel is 232 stitches wide!)
- Cut 3 pieces of lightweight fusible interfacing (dark) to fit just inside the back-stitch line on all 3 block pieces, adhere to back side of stitching following manufacturer's instructions.
- Attach wool panel: square up & trim down wool piece so that it fits on the Smyrna cross diamond on the block top. (I cut mine so it covered most of the inner diamond but showed most of the outer diamond.) - attach with a blanket stitch or applique through all layers with 2-ply Gold Leaf)
- Finger press along backstitch lines on all 3 pieces.
- Refer to chart for the "A" (lower left corner on Block top & upper left corner of Block side). Line these points up, and lace top to side panel matching backstitches with 2-ply GAST Cast Iron Skillet. Needle should run under the backstitches & not pierce the linen.
- Continue to lace around the square. Once you reach the end of the square, continue lacing the short side seam then knot off & bury thread on the back side
- Attach the Block bottom in a similar manner leaving a small opening for stuffing the block.
- Stuff firmly with your choice of filling—I chose wool roving. Lace up the remainder of the seam, knot off & bury your thread in the seam—insert you 4-letter word pin set & enjoy!

Need a better look at the finishing? A picture tutorial is now available on the Hands On Design website www.handsondesign.biz Please feel free to print it for your reference.

Block side panel—cross stitch 2 over 2

- Back-stitch block side panel outline in 2-ply GAST Cast Iron Skillet
- Back-stitch bee antennae in 2-ply Ohio Lemon Pie
- Shaded area shows overlap between side section patterns —stitch as one long side panel

- WDW-Grasshopper (732)
- ✕ WDW-Bright Leaf (780)
- GAST-Chalk (B5200)
- ▲ GAST-Gold Leaf (783)
- ! GAST-Cast Iron Skillet (310)
- 4 GAST-Ohio Lemon Pie (3822)
- GAST-Blue Jay (813)
- GAST-Sunflower (728)
- ▽ GAST-Willow (3823)



Smyrna Cross—2 step diagram shows progression of stitching over 4 threads

