

UDI DRESS



UDI DRESS

Size: 10

Level of difficulty: ● ● ●

Created by Milla Vieira

Material

3 balls of Charme color 2770.

Crochet hook D-3

Sewing thread & needle

Blue zipper (13")

Fabric to line dress

Paper, pencil, scissors, sewing machine and measuring tape.

Gauge

20 dc x 10 R = 4" / 10 cm using hook D-3.

Transfer measurement chart to paper to guide you along. Arrows indicate direction.

Disclaimer

Measurements are approximate due to differences between centimeters and inches, needle sizes and tension (gauges). All care has been taken to allow accurate completion of the pattern.

it in and out of the post below, then work your dc as normal.

Increase: inc

decrease: dec

Pattern A - Chart 1

Pattern B - Chart 2

Pattern C - Chart 3

Pattern D - Chart 4

Crochet edge: chart 5.

Dress

Start at hem, work front & back at the same time, crochet in the round. Ch 198, turn and follow Pattern A, chart 1 and rep sts = 18 motifs. At 13.5", dec 1 motif on each side = 16 motifs and work for 4.5". In the next row, start on side, crochet back & forth, follow Pattern B - chart 2 and rep sts for 7". In the next row, work front & back separately, dec 1 st in every row (5x). End each side of neckline with 4 motifs. Fasten off and set piece aside.

Sleeves: Start at cuff. Ch 66, turn. Follow Pattern D - chart 4 and rep sts. At 2.5" dec 6 sts on each side, end sleeve with 6 motifs, fasten off. Mk other sleeve.

Assembly & finishing: Use tapestry needle and Charme to sew sleeves onto body (2.5") with basting sts. Zipper: Sew zipper on side with basting sts.

Neckline: Use hook D-3 and Charme to work around neckline and sleeves. Rows 1 - 9: Follow Pattern C = 25 motifs, chart 3 and rep sts. End piece with Crochet edge - chart 5 = crochet in the round.

Hem: Use hook D-3 and Charme. Join yarn in the foundation ch (198), crochet in the round. Rows 1 - 16: follow Pattern C = 33 motifs, chart 3 and rep sts.

Lining: use fabric to make s strapless slip, follow measurement chart.

Stitch glossary and abbreviations:

stitch: st

make: mk

skip: sk

chain: ch

slip st: sl st

single crochet: sc

half double crochet: hdc

double crochet: dc

dc2tog: 2 dc closed tog in different base sts

FPdc: Instead of inserting your hook in the ch at the top of st, wind it in and out of the post below, then work your dc as normal.

BPdc: Instead of inserting your hook in the ch at the top of st, go behind with your hook and wind

Chart 1 - Pattern A

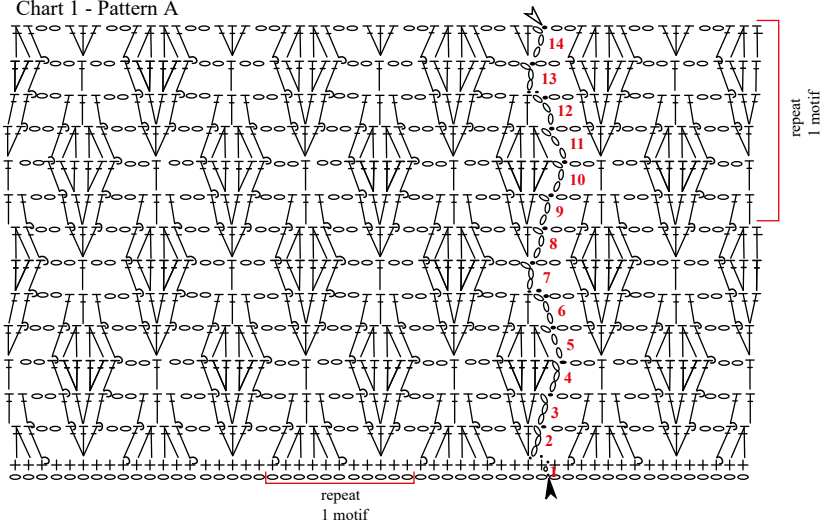


Chart 2 - Pattern B

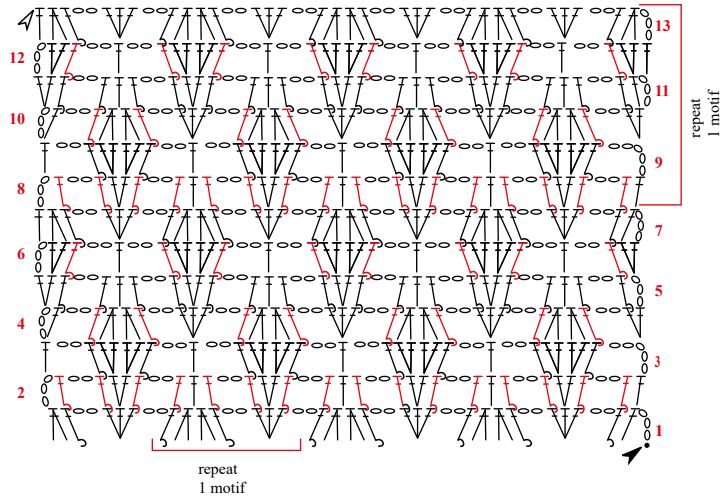


Chart 4 - Pattern D

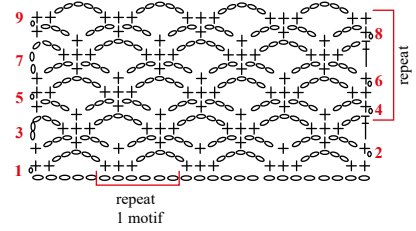


Chart 3 - Pattern C

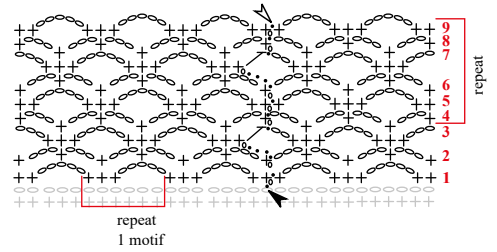
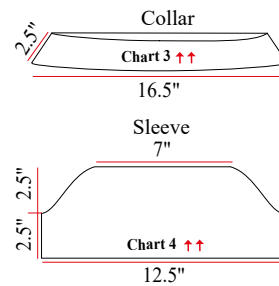
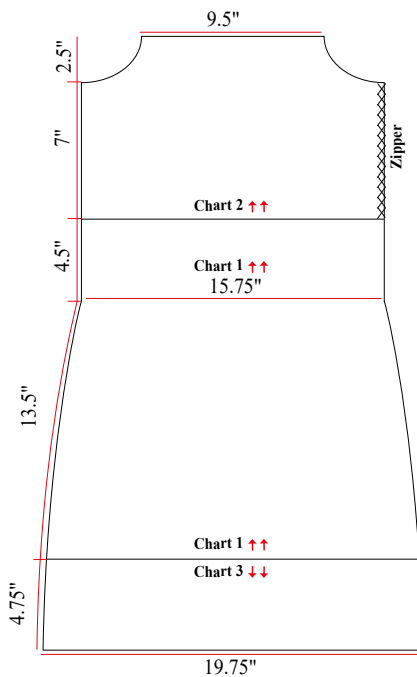


Chart 5
Crochet edge



Measurement chart
Back = Front



Stitch key

- ch
- sl st
- + sc
- | hdc
- ⌋ dc
- ⌋ dc2tog
- ⌋ FPdc
- ⌋ BPdc
- ⌋ picot
- ↑↑ direction
- ▲ beginning
- △ end