

**Golden Kite**

www.goldenkite.com

# 1141 The Pearls of Aphrodite



**This pattern may not be copied, sold or in any other way handled in any way that violates the international copyright laws. If you get hold of this pattern (and or this document) in any other way than via a direct download from [www.goldenkite.com](http://www.goldenkite.com) or via a mail from us, you should report that to us at [legal\\_actions@goldenkite.com](mailto:legal_actions@goldenkite.com) .**

Copyright ( c ) 2007-, Golden Kite. All rights reserved.

Copyright ( c ) 2007-, Golden Kite (Golden K.)  
Internet: [www.goldenkite.com](http://www.goldenkite.com)

e-mail: [info@goldenkite.com](mailto:info@goldenkite.com)

## Instructions

Thank you for choosing Golden Kite products!  
We hope you will have lots of fun with this cross-stitch pattern!

### Fabric

Press the fabric with an iron if needed. A good thing to prevent the fabric from fraying is to machine zigzag the edges.

On large patterns, it is easiest to start from the upper left corner of the design. Make sure you have the proper margins before starting and that the fabric piece is of the correct size. The best way to verify this is to count all stitch positions on the fabric from the upper left corner downwards and to the right to make sure there is enough space for the design.

Some prefer to start in the center of the design instead. To locate the center of the fabric, fold the fabric in half both vertically and horizontally. The center is located where these two folds meet.

### Stitches

Each length of DMC tread consists of six strands.  
Use two of these strands for all stitches.

Note that some colors may be mixes (or blends) between two different pure colors. In that case take one strand of the two colors each and thread the two strands into the needle at the same time for stitching.

All stitches are full cross-stitches. No half-stitching and no back-stitching is necessary in this pattern.

All cross-stitches will be worked into the holes in the fabric from left to right. Always use the larger holes in the fabric for the stitches. Adjacent stitches should meet in the same hole. Make sure all stitches cross in the same direction.

Please be careful when washing the finished embroidery! The cotton thread may bleed when washed. Only hand wash it in lukewarm water. Remove excess water by roll it in a towel and lay it flat to air dry. Natural fabrics may shrink slightly when washed. We do not recommend washing the embroidery if not absolutely necessary and we take no responsibility for any damage that may occur.

*When you start using this product you agree that Golden Kite (Golden K), or any people working for or in association with Golden Kite (Golden K), cannot be set responsible for any physical, mental, economical or other type of damage caused by this product (including this document, pattern, threads, needles and any other parts received by you from Golden Kite (Golden K)).*

**This pattern may not be copied, sold or in any other way handled in any way that violates the international copyright laws. If you get hold of this pattern (and or this document) in any other way than via a direct download from [www.goldenkite.com](http://www.goldenkite.com) or via a mail from us, you should report that to us at [legal\\_actions@goldenkite.com](mailto:legal_actions@goldenkite.com) .**

## The Pearls of Aphrodite

Stitch Count	
Horizontal:	397
Vertical:	860

Recommended Fabric Color
Antique White

This table tells the size of the pattern (without any margins) and the size of the fabric required to stitch the pattern (including recommended margins). 3 inch margins have been added on each side in the 'Including Margins' row.

The sizes are given for 14, 16 and 18 stitches per inch fabrics.

Make sure to use the 'Including Margins' row when cutting the piece of fabric to be used. Also make sure that 3 inch margins are enough for your stitching technique and add more margin areas if necessary.

	14				16				18			
	Width		Height		Width		Height		Width		Height	
	cm	inch	cm	inch	cm	inch	cm	inch	cm	inch	cm	inch
Pattern:	72	28.28	156	61.39	63	24.75	137	53.71	56	22	122	47.75
Including Margins:	88	35	172	68	79	31	153	60	72	29	138	54
	10				12				24			
	Width		Height		Width		Height		Width		Height	
	cm	inch	cm	inch	cm	inch	cm	inch	cm	inch	cm	inch
Pattern:	100	39.59	218	85.94	84	32.99	182	71.62	42	16.49	91	35.81
Including Margins:	116	46	234	92	100	39	198	78	58	23	107	42
	25				26				27			
	Width		Height		Width		Height		Width		Height	
	cm	inch	cm	inch	cm	inch	cm	inch	cm	inch	cm	inch
Pattern:	40	15.83	87	34.37	38	15.22	84	33.05	37	14.66	80	31.83
Including Margins:	56	22	103	41	54	22	100	40	53	21	96	38
	28				30				32			
	Width		Height		Width		Height		Width		Height	
	cm	inch	cm	inch	cm	inch	cm	inch	cm	inch	cm	inch
Pattern:	36	14.14	78	30.69	33	13.19	72	28.64	31	12.37	68	26.85
Including Margins:	52	21	94	37	49	20	88	35	47	19	84	33

Solid Color Stitches. Use two strands of the specified color for these stitches.		
Symbol	DMC	Name
▼	221	Shell Pink-VY DK
•	311	Navy Blue-MD
☾	317	Pewter Gray
☛	336	Navy Blue
☒	355	Terra Cotta-DK
▲	370	Mustard-MD
◎	371	Mustard
‡	407	Desert Sand-DK
☛	420	Hazelnut Brown-DK
?	422	Hazelnut Brown-LT
¼	435	Brown-VY LT
∇	436	Tan
⊕	502	Blue Green
⊞	522	Fern Green
‡	523	Fern Green-LT
✱	535	Ash Gray-VY LT
☉	611	Drab Brown
	612	Drab Brown-LT
β	613	Drab Brown-VY LT
•	632	Desert Sand-UL VY DK
▷	640	Beige Gray-VY DK
▲	645	Beaver Gray-VY DK
◎	646	Beaver Gray-DK
••	647	Beaver Gray-MD
◦	727	Topaz-VY LT
5	738	Tan-VY LT
<	739	Tan-UL VY LT
∞	745	Yellow-LT Pale
u	746	Off White
(	772	Yellow Green-VY LT
☉	801	Coffee Brown-DK
■	823	Navy Blue-DK
*	830	Golden Olive-DK
L	831	Golden Olive-MD

◇	833	Golden Olive-LT
▨	839	Beige Brown-DK
#	841	Beige Brown-LT
e	842	Beige Brown-VY LT
✱	902	Garnet-VY DK
○	926	Gray Green-MD
●	930	Antique Blue-DK
☒	931	Antique Blue-MD
☉	938	Coffee Brown-UL DK
■	939	Navy Blue-VY DK
△	945	Tawny
□	955	Nile Green-LT
+	964	Sea Green-LT
✱	975	Golden Brown-DK
≡	976	Golden Brown-MD
•	977	Golden Brown-LT
m	3013	Khaki Green-LT
✓	3045	Yellow Beige-DK
4	3046	Yellow Beige-MD
2	3053	Green Gray
△	3078	Golden Yellow-VY LT
☒	3363	Pine Green-MD
☛	3685	Mauve-DK
○	3768	Gray Green-DK
≡	3790	Beige Gray-UL DK
✱	3799	Pewter Gray-VY DK
☒	3810	Turquoise-DK
«	3823	Yellow-UL Pale
☉	3825	Pumpkin-Pale
☉	3826	Golden Brown
≡	3827	Golden Brown-Pale
c	3829	Old Gold-VY DK
l	3855	Autumn Gold-LT
◆	3860	Cocoa
♠	3863	Mocha Beige-MD
	3864	Mocha Beige-LT

Blend Stitches. Use one strand of each of DMC1 and DMC2 for these stitches.				
Symbol	DMC1	Name1	DMC2	Name2
☉	801	Coffee Brown-DK	869	Hazelnut Brown-VY DK
★	3860	Cocoa	3862	Mocha Beige-DK
h	612	Drab Brown-LT	3864	Mocha Beige-LT
◆	902	Garnet-VY DK	938	Coffee Brown-UL DK
☛	926	Gray Green-MD	930	Antique Blue-DK
☉	370	Mustard-MD	611	Drab Brown
//	3363	Pine Green-MD	3787	Brown Gray-DK
☒	420	Hazelnut Brown-DK	435	Brown-VY LT
z	356	Terra Cotta-MD	435	Brown-VY LT
⇄	3856	Mahogany-UL VY LT	3046	Yellow Beige-MD
•	3826	Golden Brown	3829	Old Gold-VY DK
♠	830	Golden Olive-DK	839	Beige Brown-DK
☉	839	Beige Brown-DK	535	Ash Gray-VY LT

×	640	Beige Gray-VY DK	3860	Cocoa
H	640	Beige Gray-VY DK	645	Beaver Gray-VY DK
尸	407	Desert Sand-DK	3864	Mocha Beige-LT
⌘	926	Gray Green-MD	522	Fern Green
⓪	522	Fern Green	646	Beaver Gray-DK
✕	502	Blue Green	3768	Gray Green-DK
∩	830	Golden Olive-DK	3685	Mauve-DK
←	838	Beige Brown-VY DK	3685	Mauve-DK
♣	838	Beige Brown-VY DK	839	Beige Brown-DK
⌘	838	Beige Brown-VY DK	3799	Pewter Gray-VY DK
⊖	611	Drab Brown	612	Drab Brown-LT
∩	435	Brown-VY LT	436	Tan
○	964	Sea Green-LT	955	Nile Green-LT
∅	955	Nile Green-LT	644	Beige Gray-MD
•	955	Nile Green-LT	543	Beige Brown-UL VY LT
⊞	739	Tan-UL VY LT	3078	Golden Yellow-VY LT
L	3046	Yellow Beige-MD	3855	Autumn Gold-LT
↑	745	Yellow-LT Pale	3855	Autumn Gold-LT
▷	745	Yellow-LT Pale	3046	Yellow Beige-MD
⊞	613	Drab Brown-VY LT	739	Tan-UL VY LT
1	746	Off White	3823	Yellow-UL Pale
◇	422	Hazelnut Brown-LT	3046	Yellow Beige-MD
∅	613	Drab Brown-VY LT	3046	Yellow Beige-MD
⇒	3855	Autumn Gold-LT	613	Drab Brown-VY LT
6	3822	Straw-LT	3827	Golden Brown-Pale
☆	977	Golden Brown-LT	422	Hazelnut Brown-LT
⊞	3013	Khaki Green-LT	3045	Yellow Beige-DK
⊞	613	Drab Brown-VY LT	3013	Khaki Green-LT
)	3811	Turquoise-VY LT	955	Nile Green-LT
/	644	Beige Gray-MD	964	Sea Green-LT
=	369	Pistachio Green-VY LT	613	Drab Brown-VY LT
v	613	Drab Brown-VY LT	772	Yellow Green-VY LT
7	422	Hazelnut Brown-LT	3013	Khaki Green-LT
::	422	Hazelnut Brown-LT	3045	Yellow Beige-DK
∩	3864	Mocha Beige-LT	738	Tan-VY LT
◇	370	Mustard-MD	833	Golden Olive-LT
τ	370	Mustard-MD	435	Brown-VY LT
∩	3045	Yellow Beige-DK	370	Mustard-MD
▼	371	Mustard	640	Beige Gray-VY DK
◇	420	Hazelnut Brown-DK	3790	Beige Gray-UL DK
✕	841	Beige Brown-LT	646	Beaver Gray-DK
×	3790	Beige Gray-UL DK	841	Beige Brown-LT
⊞	3863	Mocha Beige-MD	841	Beige Brown-LT
⊞	420	Hazelnut Brown-DK	3863	Mocha Beige-MD
∩	420	Hazelnut Brown-DK	611	Drab Brown
▲	3787	Brown Gray-DK	3790	Beige Gray-UL DK
♦	3790	Beige Gray-UL DK	632	Desert Sand-UL VY DK
=	839	Beige Brown-DK	3790	Beige Gray-UL DK
✕	838	Beige Brown-VY DK	535	Ash Gray-VY LT
⊞	535	Ash Gray-VY LT	3685	Mauve-DK
▣	3860	Cocoa	3685	Mauve-DK
*	3860	Cocoa	535	Ash Gray-VY LT
φ	3860	Cocoa	838	Beige Brown-VY DK
☉	3860	Cocoa	839	Beige Brown-DK
▲	902	Garnet-VY DK	535	Ash Gray-VY LT
●	938	Coffee Brown-UL DK	939	Navy Blue-VY DK
●	939	Navy Blue-VY DK	902	Garnet-VY DK
∩	3862	Mocha Beige-DK	3685	Mauve-DK
♡	3855	Autumn Gold-LT	3856	Mahogany-UL VY LT

>	3856	Mahogany-UL VY LT	745	Yellow-LT Pale
⬇	975	Golden Brown-DK	356	Terra Cotta-MD
Ⓢ	3827	Golden Brown-Pale	436	Tan
×	833	Golden Olive-LT	976	Golden Brown-MD
√	422	Hazelnut Brown-LT	437	Tan-LT
↑	833	Golden Olive-LT	436	Tan
≈	833	Golden Olive-LT	3829	Old Gold-VY DK
Ⓞ	422	Hazelnut Brown-LT	3827	Golden Brown-Pale
◁	436	Tan	977	Golden Brown-LT
↖	976	Golden Brown-MD	3826	Golden Brown
‡	221	Shell Pink-VY DK	801	Coffee Brown-DK
▶	869	Hazelnut Brown-VY DK	975	Golden Brown-DK
⬆	355	Terra Cotta-DK	356	Terra Cotta-MD
■	355	Terra Cotta-DK	632	Desert Sand-UL VY DK
◀	632	Desert Sand-UL VY DK	975	Golden Brown-DK
⚙	355	Terra Cotta-DK	3826	Golden Brown
⌘	3829	Old Gold-VY DK	976	Golden Brown-MD
⬅	3827	Golden Brown-Pale	977	Golden Brown-LT
Ⓢ	356	Terra Cotta-MD	436	Tan
▲	355	Terra Cotta-DK	420	Hazelnut Brown-DK
*	3829	Old Gold-VY DK	831	Golden Olive-MD
\$	926	Gray Green-MD	3849	Teal Green-LT
⊕	611	Drab Brown	522	Fern Green
Ⓜ	612	Drab Brown-LT	522	Fern Green
⋈	644	Beige Gray-MD	647	Beaver Gray-MD
+	930	Antique Blue-DK	3768	Gray Green-DK
<	611	Drab Brown	3363	Pine Green-MD
↙	611	Drab Brown	3790	Beige Gray-UL DK
Ⓜ	336	Navy Blue	930	Antique Blue-DK
▲	924	Gray Green--VY DK	930	Antique Blue-DK
Ⓜ	535	Ash Gray-VY LT	930	Antique Blue-DK
❖	975	Golden Brown-DK	3863	Mocha Beige-MD
⊕	356	Terra Cotta-MD	3826	Golden Brown
≈	745	Yellow-LT Pale	3078	Golden Yellow-VY LT
●	823	Navy Blue-DK	3799	Pewter Gray-VY DK
∨	976	Golden Brown-MD	977	Golden Brown-LT
♥	823	Navy Blue-DK	924	Gray Green--VY DK
⌘	3826	Golden Brown	975	Golden Brown-DK
α	3822	Straw-LT	422	Hazelnut Brown-LT
n	3078	Golden Yellow-VY LT	3823	Yellow-UL Pale
∩	3078	Golden Yellow-VY LT	772	Yellow Green-VY LT
⬇	355	Terra Cotta-DK	370	Mustard-MD
⬇	838	Beige Brown-VY DK	902	Garnet-VY DK
Ⓢ	939	Navy Blue-VY DK	838	Beige Brown-VY DK
**	902	Garnet-VY DK	3799	Pewter Gray-VY DK
⊕	3799	Pewter Gray-VY DK	3685	Mauve-DK
Ⓢ	939	Navy Blue-VY DK	3799	Pewter Gray-VY DK
↑	336	Navy Blue	924	Gray Green--VY DK
○	841	Beige Brown-LT	3864	Mocha Beige-LT
—	3013	Khaki Green-LT	3864	Mocha Beige-LT
Ⓜ	3864	Mocha Beige-LT	613	Drab Brown-VY LT
➔	938	Coffee Brown-UL DK	221	Shell Pink-VY DK
^	3855	Autumn Gold-LT	3078	Golden Yellow-VY LT
⌘	930	Antique Blue-DK	931	Antique Blue-MD
Ⓢ	3862	Mocha Beige-DK	3790	Beige Gray-UL DK
⬇	221	Shell Pink-VY DK	902	Garnet-VY DK
:	543	Beige Brown-UL VY LT	964	Sea Green-LT
⊕	3811	Turquoise-VY LT	964	Sea Green-LT

This table specifies how much thread of each color is required to stitch this pattern. It is good to know that one complete DMC skein contains 313 inches (795 cm) thread.

DMC	Name	Usage (cm)	Usage (inch)	Usage (cm)	Usage (inch)	Usage (cm)	Usage (inch)
		14		16		18	
221	Shell Pink-VY DK	529	208	504	198	453	178
311	Navy Blue-MD	29	11	27	10	24	9
317	Pewter Gray	168	66	160	62	144	56
336	Navy Blue	358	140	341	134	306	120
355	Terra Cotta-DK	561	220	534	210	481	189
356	Terra Cotta-MD	320	125	305	120	274	107
369	Pistachio Green-VY LT	51	20	48	18	43	16
370	Mustard-MD	1200	472	1142	449	1028	404
371	Mustard	695	273	662	260	595	234
407	Desert Sand-DK	142	55	135	53	121	47
420	Hazelnut Brown-DK	571	224	543	213	489	192
422	Hazelnut Brown-LT	4570	1799	4352	1713	3917	1542
435	Brown-VY LT	611	240	582	229	524	206
436	Tan	588	231	560	220	504	198
437	Tan-LT	150	59	143	56	128	50
502	Blue Green	126	49	120	47	108	42
522	Fern Green	905	356	862	339	776	305
523	Fern Green-LT	113	44	107	42	97	38
535	Ash Gray-VY LT	1551	610	1477	581	1329	523
543	Beige Brown-UL VY LT	127	50	120	47	108	42
611	Drab Brown	1829	720	1742	685	1568	617
612	Drab Brown-LT	1939	763	1847	727	1662	654
613	Drab Brown-VY LT	4135	1627	3939	1550	3545	1395
632	Desert Sand-UL VY DK	584	229	556	218	501	197
640	Beige Gray-VY DK	1646	648	1567	616	1410	555
644	Beige Gray-MD	293	115	279	109	251	98
645	Beaver Gray-VY DK	459	180	437	172	393	154
646	Beaver Gray-DK	530	208	504	198	454	178
647	Beaver Gray-MD	273	107	260	102	234	92
727	Topaz-VY LT	97	38	93	36	83	32
738	Tan-VY LT	2345	923	2234	879	2010	791
739	Tan-UL VY LT	1646	648	1568	617	1411	555
745	Yellow-LT Pale	2693	1060	2565	1009	2308	908
746	Off White	257	101	245	96	220	86
772	Yellow Green-VY LT	360	141	343	135	309	121
801	Coffee Brown-DK	426	167	406	159	365	143
823	Navy Blue-DK	903	355	860	338	774	304
830	Golden Olive-DK	527	207	502	197	451	177
831	Golden Olive-MD	204	80	194	76	174	68
833	Golden Olive-LT	460	181	438	172	394	155
838	Beige Brown-VY DK	1762	693	1678	660	1510	594
839	Beige Brown-DK	1547	609	1474	580	1326	522
841	Beige Brown-LT	1387	546	1321	520	1189	468
842	Beige Brown-VY LT	149	58	141	55	127	50
869	Hazelnut Brown-VY DK	103	40	98	38	88	34
902	Garnet-VY DK	2320	913	2209	869	1988	782
924	Gray Green--VY DK	439	172	418	164	376	148
926	Gray Green-MD	329	129	313	123	282	111
930	Antique Blue-DK	633	249	603	237	543	213
931	Antique Blue-MD	95	37	91	35	82	32
938	Coffee Brown-UL DK	2052	807	1954	769	1759	692
939	Navy Blue-VY DK	10564	4159	10061	3961	9054	3564
945	Tawny	40	15	38	14	34	13
955	Nile Green-LT	533	209	508	200	457	179

Copyright ( c ) 2007-, Golden Kite (Golden K.)

Internet: [www.goldenkite.com](http://www.goldenkite.com)

e-mail: [info@goldenkite.com](mailto:info@goldenkite.com)

964	Sea Green-LT	312	122	297	116	268	105
975	Golden Brown-DK	423	166	403	158	363	142
976	Golden Brown-MD	657	258	625	246	563	221
977	Golden Brown-LT	469	184	447	175	402	158
3013	Khaki Green-LT	3035	1194	2891	1138	2602	1024
3045	Yellow Beige-DK	2054	808	1956	770	1760	692
3046	Yellow Beige-MD	7454	2934	7099	2794	6389	2515
3053	Green Gray	288	113	274	107	247	97
3078	Golden Yellow-VY LT	4485	1765	4272	1681	3844	1513
3363	Pine Green-MD	249	98	237	93	213	83
3685	Mauve-DK	1517	597	1444	568	1300	511
3768	Gray Green-DK	158	62	151	59	136	53
3787	Brown Gray-DK	353	138	336	132	302	118
3790	Beige Gray-UL DK	2291	901	2182	859	1964	773
3799	Pewter Gray-VY DK	2546	1002	2424	954	2182	859
3810	Turquoise-DK	21	8	20	7	18	7
3811	Turquoise-VY LT	95	37	90	35	81	31
3822	Straw-LT	204	80	195	76	175	68
3823	Yellow-UL Pale	2594	1021	2470	972	2223	875
3825	Pumpkin-Pale	18	7	17	6	15	5
3826	Golden Brown	841	331	801	315	721	283
3827	Golden Brown-Pale	254	100	242	95	217	85
3829	Old Gold-VY DK	262	103	250	98	225	88
3849	Teal Green-LT	26	10	25	9	23	9
3855	Autumn Gold-LT	2485	978	2367	931	2130	838
3856	Mahogany-UL VY LT	764	300	728	286	655	257
3860	Cocoa	2159	850	2056	809	1850	728
3862	Mocha Beige-DK	456	179	434	170	390	153
3863	Mocha Beige-MD	871	342	830	326	747	294
3864	Mocha Beige-LT	2049	806	1951	768	1756	691

Extended thread usage table.

DMC	Name	Usage (cm)	Usage (inch)	Usage (cm)	Usage (inch)	Usage (cm)	Usage (inch)
		10		12		24	
221	Shell Pink-VY DK	815	320	680	267	340	134
311	Navy Blue-MD	43	16	36	14	18	7
317	Pewter Gray	259	101	216	84	108	42
336	Navy Blue	551	216	459	180	230	90
355	Terra Cotta-DK	866	340	722	284	361	142
356	Terra Cotta-MD	493	193	411	161	206	80
369	Pistachio Green-VY LT	77	29	65	24	32	12
370	Mustard-MD	1850	727	1542	606	771	303
371	Mustard	1071	421	893	351	446	176
407	Desert Sand-DK	218	85	182	71	91	35
420	Hazelnut Brown-DK	880	346	734	288	367	144
422	Hazelnut Brown-LT	7051	2776	5876	2313	2938	1157
435	Brown-VY LT	943	371	786	309	393	155
436	Tan	907	356	756	297	378	149
437	Tan-LT	230	90	192	75	96	38
502	Blue Green	194	76	162	63	81	32
522	Fern Green	1397	549	1164	458	582	229
523	Fern Green-LT	175	68	146	57	73	29
535	Ash Gray-VY LT	2392	941	1994	785	997	392
543	Beige Brown-UL VY LT	194	76	162	63	81	32
611	Drab Brown	2822	1111	2352	926	1176	463
612	Drab Brown-LT	2992	1177	2493	981	1247	491



613	Drab Brown-VY LT	6381	2511	5318	2093	2659	1046
632	Desert Sand-UL VY DK	902	355	752	296	376	148
640	Beige Gray-VY DK	2538	999	2115	833	1058	416
644	Beige Gray-MD	452	176	377	147	188	74
645	Beaver Gray-VY DK	707	277	590	231	295	116
646	Beaver Gray-DK	817	320	681	267	341	134
647	Beaver Gray-MD	421	166	351	138	176	69
727	Topaz-VY LT	149	58	125	48	62	24
738	Tan-VY LT	3618	1424	3015	1187	1508	593
739	Tan-UL VY LT	2540	999	2117	833	1058	416
745	Yellow-LT Pale	4154	1634	3462	1362	1731	681
746	Off White	396	155	330	129	165	65
772	Yellow Green-VY LT	556	218	464	182	232	91
801	Coffee Brown-DK	657	257	548	215	274	107
823	Navy Blue-DK	1393	547	1161	456	581	228
830	Golden Olive-DK	812	319	677	266	338	133
831	Golden Olive-MD	313	122	261	102	131	51
833	Golden Olive-LT	709	279	591	233	296	116
838	Beige Brown-VY DK	2718	1069	2265	891	1133	446
839	Beige Brown-DK	2387	940	1989	783	995	392
841	Beige Brown-LT	2140	842	1784	702	892	351
842	Beige Brown-VY LT	229	90	191	75	95	38
869	Hazelnut Brown-VY DK	158	61	132	51	66	26
902	Garnet-VY DK	3578	1408	2982	1173	1491	587
924	Gray Green--VY DK	677	266	564	222	282	111
926	Gray Green-MD	508	200	423	167	212	83
930	Antique Blue-DK	977	383	815	320	407	160
931	Antique Blue-MD	148	58	123	48	62	24
938	Coffee Brown-UL DK	3166	1246	2639	1038	1319	519
939	Navy Blue-VY DK	16297	6415	13581	5346	6791	2673
945	Tawny	61	23	51	20	26	10
955	Nile Green-LT	823	322	686	269	343	134
964	Sea Green-LT	482	189	402	158	201	79
975	Golden Brown-DK	653	256	545	213	272	107
976	Golden Brown-MD	1013	398	845	332	422	166
977	Golden Brown-LT	724	284	603	237	302	119
3013	Khaki Green-LT	4684	1843	3903	1536	1952	768
3045	Yellow Beige-DK	3168	1246	2640	1038	1320	519
3046	Yellow Beige-MD	11500	4527	9584	3773	4792	1886
3053	Green Gray	445	175	371	146	185	73
3078	Golden Yellow-VY LT	6919	2723	5766	2270	2883	1135
3363	Pine Green-MD	383	149	320	125	160	62
3685	Mauve-DK	2340	920	1950	767	975	383
3768	Gray Green-DK	245	95	204	80	102	40
3787	Brown Gray-DK	544	212	453	177	227	89
3790	Beige Gray-UL DK	3535	1391	2946	1160	1473	580
3799	Pewter Gray-VY DK	3928	1546	3273	1289	1637	644
3810	Turquoise-DK	32	13	27	11	14	5
3811	Turquoise-VY LT	146	56	122	47	61	23
3822	Straw-LT	315	122	263	102	131	51
3823	Yellow-UL Pale	4001	1575	3335	1313	1667	656
3825	Pumpkin-Pale	27	9	23	8	11	4
3826	Golden Brown	1298	509	1082	425	541	212
3827	Golden Brown-Pale	391	153	326	128	163	64
3829	Old Gold-VY DK	405	158	338	132	169	66
3849	Teal Green-LT	41	16	35	14	17	7
3855	Autumn Gold-LT	3834	1508	3195	1257	1598	629
3856	Mahogany-UL VY LT	1179	463	983	386	491	193
3860	Cocoa	3330	1310	2775	1092	1388	546

Copyright ( c ) 2007-, Golden Kite (Golden K.)

Internet: [www.goldenkite.com](http://www.goldenkite.com)

e-mail: [info@goldenkite.com](mailto:info@goldenkite.com)

3862	Mocha Beige-DK	702	275	585	230	293	115
3863	Mocha Beige-MD	1345	529	1121	441	560	221
3864	Mocha Beige-LT	3161	1244	2634	1037	1317	518

Extended thread usage table.

DMC	Name	Usage (cm)	Usage (inch)	Usage (cm)	Usage (inch)	Usage (cm)	Usage (inch)
		25		26		27	
221	Shell Pink-VY DK	326	128	314	123	302	119
311	Navy Blue-MD	17	6	17	6	16	6
317	Pewter Gray	104	40	100	39	96	37
336	Navy Blue	220	86	212	83	204	80
355	Terra Cotta-DK	346	136	333	131	321	126
356	Terra Cotta-MD	197	77	190	74	183	71
369	Pistachio Green-VY LT	31	12	30	11	29	11
370	Mustard-MD	740	291	712	280	685	269
371	Mustard	428	168	412	162	397	156
407	Desert Sand-DK	87	34	84	33	81	31
420	Hazelnut Brown-DK	352	138	339	133	326	128
422	Hazelnut Brown-LT	2820	1110	2712	1068	2611	1028
435	Brown-VY LT	377	148	363	143	349	137
436	Tan	363	143	349	137	336	132
437	Tan-LT	92	36	89	35	85	33
502	Blue Green	78	30	75	29	72	28
522	Fern Green	559	220	537	211	517	203
523	Fern Green-LT	70	27	67	26	65	25
535	Ash Gray-VY LT	957	377	920	362	886	349
543	Beige Brown-UL VY LT	78	30	75	29	72	28
611	Drab Brown	1129	444	1086	427	1045	411
612	Drab Brown-LT	1197	471	1151	453	1108	436
613	Drab Brown-VY LT	2552	1004	2454	966	2363	930
632	Desert Sand-UL VY DK	361	142	347	136	334	131
640	Beige Gray-VY DK	1015	400	976	384	940	370
644	Beige Gray-MD	181	71	174	68	167	65
645	Beaver Gray-VY DK	283	111	272	107	262	103
646	Beaver Gray-DK	327	128	314	123	303	119
647	Beaver Gray-MD	168	66	162	64	156	61
727	Topaz-VY LT	60	23	57	22	55	21
738	Tan-VY LT	1447	570	1392	548	1340	527
739	Tan-UL VY LT	1016	400	977	384	941	370
745	Yellow-LT Pale	1662	654	1598	629	1539	605
746	Off White	158	62	152	60	147	57
772	Yellow Green-VY LT	222	87	214	84	206	81
801	Coffee Brown-DK	263	103	253	99	243	95
823	Navy Blue-DK	557	219	536	210	516	203
830	Golden Olive-DK	325	127	312	123	301	118
831	Golden Olive-MD	125	49	120	47	116	45
833	Golden Olive-LT	284	112	273	107	263	103
838	Beige Brown-VY DK	1087	428	1045	411	1007	396
839	Beige Brown-DK	955	376	918	361	884	348
841	Beige Brown-LT	856	337	823	324	793	312
842	Beige Brown-VY LT	91	36	88	35	85	33
869	Hazelnut Brown-VY DK	63	24	61	24	59	23
902	Garnet-VY DK	1431	563	1376	541	1325	521
924	Gray Green--VY DK	271	107	260	102	251	99
926	Gray Green-MD	203	80	195	77	188	74
930	Antique Blue-DK	391	153	376	147	362	142

931	Antique Blue-MD	59	23	57	22	55	21
938	Coffee Brown-UL DK	1266	498	1218	479	1173	461
939	Navy Blue-VY DK	6519	2566	6268	2467	6036	2376
945	Tawny	24	9	24	9	23	9
955	Nile Green-LT	329	129	316	124	305	119
964	Sea Green-LT	193	76	186	73	179	70
975	Golden Brown-DK	261	102	251	98	242	95
976	Golden Brown-MD	405	159	390	153	375	147
977	Golden Brown-LT	289	114	278	109	268	105
3013	Khaki Green-LT	1873	737	1801	709	1735	683
3045	Yellow Beige-DK	1267	498	1218	479	1173	461
3046	Yellow Beige-MD	4600	1811	4423	1741	4259	1677
3053	Green Gray	178	70	171	67	165	65
3078	Golden Yellow-VY LT	2768	1089	2661	1047	2563	1009
3363	Pine Green-MD	153	60	147	57	142	55
3685	Mauve-DK	936	368	900	354	867	341
3768	Gray Green-DK	98	38	94	37	91	35
3787	Brown Gray-DK	217	85	209	82	201	79
3790	Beige Gray-UL DK	1414	557	1360	535	1309	515
3799	Pewter Gray-VY DK	1571	618	1511	595	1455	573
3810	Turquoise-DK	13	5	12	5	12	5
3811	Turquoise-VY LT	58	22	56	21	54	21
3822	Straw-LT	126	49	121	47	117	45
3823	Yellow-UL Pale	1601	630	1539	606	1482	583
3825	Pumpkin-Pale	11	4	10	3	10	3
3826	Golden Brown	519	204	499	196	481	189
3827	Golden Brown-Pale	156	61	150	59	145	57
3829	Old Gold-VY DK	162	63	156	61	150	59
3849	Teal Green-LT	17	6	16	6	15	6
3855	Autumn Gold-LT	1534	603	1475	580	1420	559
3856	Mahogany-UL VY LT	472	185	453	178	437	171
3860	Cocoa	1332	524	1281	504	1233	485
3862	Mocha Beige-DK	281	110	270	106	260	102
3863	Mocha Beige-MD	538	212	517	204	498	196
3864	Mocha Beige-LT	1264	498	1216	478	1171	461

Extended thread usage table.

DMC	Name	Usage (cm)	Usage (inch)	Usage (cm)	Usage (inch)	Usage (cm)	Usage (inch)
		28		30		32	
221	Shell Pink-VY DK	291	114	272	107	255	100
311	Navy Blue-MD	15	6	14	5	14	5
317	Pewter Gray	93	36	86	34	81	32
336	Navy Blue	197	77	184	72	172	68
355	Terra Cotta-DK	309	122	289	113	271	106
356	Terra Cotta-MD	176	69	164	64	154	60
369	Pistachio Green-VY LT	28	10	26	10	24	9
370	Mustard-MD	661	260	617	242	578	227
371	Mustard	383	150	357	140	335	132
407	Desert Sand-DK	78	30	73	28	68	26
420	Hazelnut Brown-DK	314	123	293	115	275	108
422	Hazelnut Brown-LT	2518	991	2350	925	2203	867
435	Brown-VY LT	337	132	314	124	295	116
436	Tan	324	127	302	119	284	111
437	Tan-LT	82	32	77	30	72	28
502	Blue Green	69	27	65	25	61	24
522	Fern Green	499	196	466	183	437	172
523	Fern Green-LT	62	24	58	23	55	21

Copyright ( c ) 2007-, Golden Kite (Golden K.)

Internet: [www.goldenkite.com](http://www.goldenkite.com)

e-mail: [info@goldenkite.com](mailto:info@goldenkite.com)

535	Ash Gray-VY LT	854	336	797	314	748	294
543	Beige Brown-UL VY LT	69	27	65	25	61	24
611	Drab Brown	1008	397	941	370	882	347
612	Drab Brown-LT	1068	420	997	392	935	368
613	Drab Brown-VY LT	2279	897	2127	837	1994	785
632	Desert Sand-UL VY DK	322	127	301	118	282	111
640	Beige Gray-VY DK	906	357	846	333	793	312
644	Beige Gray-MD	161	63	151	59	141	55
645	Beaver Gray-VY DK	253	99	236	92	221	87
646	Beaver Gray-DK	292	114	272	107	255	100
647	Beaver Gray-MD	150	59	140	55	132	52
727	Topaz-VY LT	53	21	50	19	47	18
738	Tan-VY LT	1292	509	1206	475	1131	445
739	Tan-UL VY LT	907	357	847	333	794	312
745	Yellow-LT Pale	1484	584	1385	545	1298	511
746	Off White	141	55	132	52	124	48
772	Yellow Green-VY LT	199	78	185	73	174	68
801	Coffee Brown-DK	235	92	219	86	205	80
823	Navy Blue-DK	498	195	464	182	435	171
830	Golden Olive-DK	290	114	271	106	254	100
831	Golden Olive-MD	112	44	104	41	98	38
833	Golden Olive-LT	253	100	236	93	222	87
838	Beige Brown-VY DK	971	382	906	356	849	334
839	Beige Brown-DK	852	336	796	313	746	294
841	Beige Brown-LT	764	301	713	281	669	263
842	Beige Brown-VY LT	82	32	76	30	71	28
869	Hazelnut Brown-VY DK	57	22	53	20	50	19
902	Garnet-VY DK	1278	503	1193	469	1118	440
924	Gray Green--VY DK	242	95	226	89	212	83
926	Gray Green-MD	181	71	169	67	159	62
930	Antique Blue-DK	349	137	326	128	305	120
931	Antique Blue-MD	53	21	49	19	46	18
938	Coffee Brown-UL DK	1131	445	1055	415	989	389
939	Navy Blue-VY DK	5820	2291	5432	2138	5093	2005
945	Tawny	22	8	20	8	19	7
955	Nile Green-LT	294	115	274	107	257	101
964	Sea Green-LT	172	68	161	63	151	59
975	Golden Brown-DK	233	91	218	85	204	80
976	Golden Brown-MD	362	142	338	133	317	124
977	Golden Brown-LT	258	102	241	95	226	89
3013	Khaki Green-LT	1673	658	1561	614	1464	576
3045	Yellow Beige-DK	1131	445	1056	415	990	389
3046	Yellow Beige-MD	4107	1617	3833	1509	3594	1415
3053	Green Gray	159	62	148	58	139	55
3078	Golden Yellow-VY LT	2471	973	2306	908	2162	851
3363	Pine Green-MD	137	53	128	50	120	47
3685	Mauve-DK	836	329	780	307	731	287
3768	Gray Green-DK	87	34	82	32	77	30
3787	Brown Gray-DK	194	76	181	71	170	66
3790	Beige Gray-UL DK	1263	497	1178	464	1105	435
3799	Pewter Gray-VY DK	1403	552	1309	515	1227	483
3810	Turquoise-DK	12	5	11	4	10	4
3811	Turquoise-VY LT	52	20	49	19	46	17
3822	Straw-LT	113	44	105	41	98	38
3823	Yellow-UL Pale	1429	563	1334	525	1250	492
3825	Pumpkin-Pale	10	3	9	3	8	3
3826	Golden Brown	464	182	433	170	406	159
3827	Golden Brown-Pale	140	55	130	51	122	48
3829	Old Gold-VY DK	145	57	135	53	127	50

Copyright ( c ) 2007-, Golden Kite (Golden K.)

Internet: [www.goldenkite.com](http://www.goldenkite.com)

e-mail: [info@goldenkite.com](mailto:info@goldenkite.com)

3849	Teal Green-LT	15	6	14	5	13	5
3855	Autumn Gold-LT	1369	539	1278	503	1198	471
3856	Mahogany-UL VY LT	421	165	393	154	368	145
3860	Cocoa	1189	468	1110	437	1041	410
3862	Mocha Beige-DK	251	98	234	92	219	86
3863	Mocha Beige-MD	480	189	448	176	420	165
3864	Mocha Beige-LT	1129	444	1054	415	988	389



	60	70	80	90	100
10	...	...	...	...	...
20	...	...	...	...	...
30	...	...	...	...	...
40	...	...	...	...	...
50	...	...	...	...	...
60	...	...	...	...	...
70	...	...	...	...	...

	110	120	130	140	150
10	0	0	0	0	0
20	0	0	0	0	0
30	0	0	0	0	0
40	0	0	0	0	0
50	0	0	0	0	0
60	0	0	0	0	0
70	0	0	0	0	0















	60	70	80	90	100	110	120	130	140	150
80	L	L	L	L	L	L	L	L	L	L
90	L	L	L	L	L	L	L	L	L	L
100	L	L	L	L	L	L	L	L	L	L
110	L	L	L	L	L	L	L	L	L	L
120	L	L	L	L	L	L	L	L	L	L
130	L	L	L	L	L	L	L	L	L	L
140	L	L	L	L	L	L	L	L	L	L
150	L	L	L	L	L	L	L	L	L	L

















	60	70	80	90	100
150	>	>	>	>	>
160	>	>	>	>	>
170	>	>	>	>	>
180	>	>	>	>	>
190	>	>	>	>	>
200	>	>	>	>	>
210	>	>	>	>	>
220	>	>	>	>	>

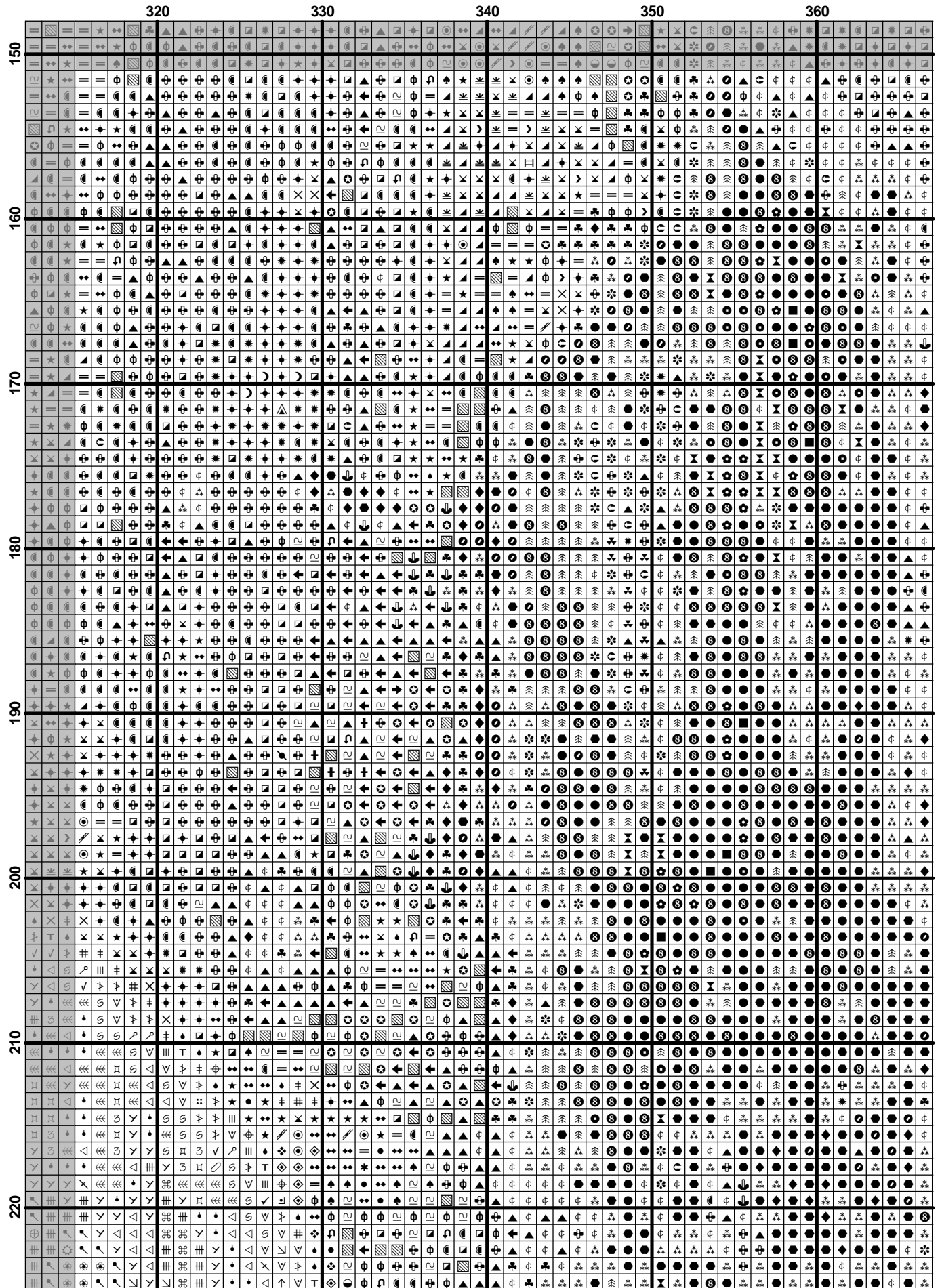








	260	270	280	290	300	310
150	...	...	...	...	...	...
160	...	...	...	...	...	...
170	...	...	...	...	...	...
180	...	...	...	...	...	...
190	...	...	...	...	...	...
200	...	...	...	...	...	...
210	...	...	...	...	...	...
220	...	...	...	...	...	...





	10	20	30	40	50
230	...	...	...	...	...
240	...	...	...	...	...
250	...	...	...	...	...
260	...	...	...	...	...
270	...	...	...	...	...
280	...	...	...	...	...
290	...	...	...	...	...



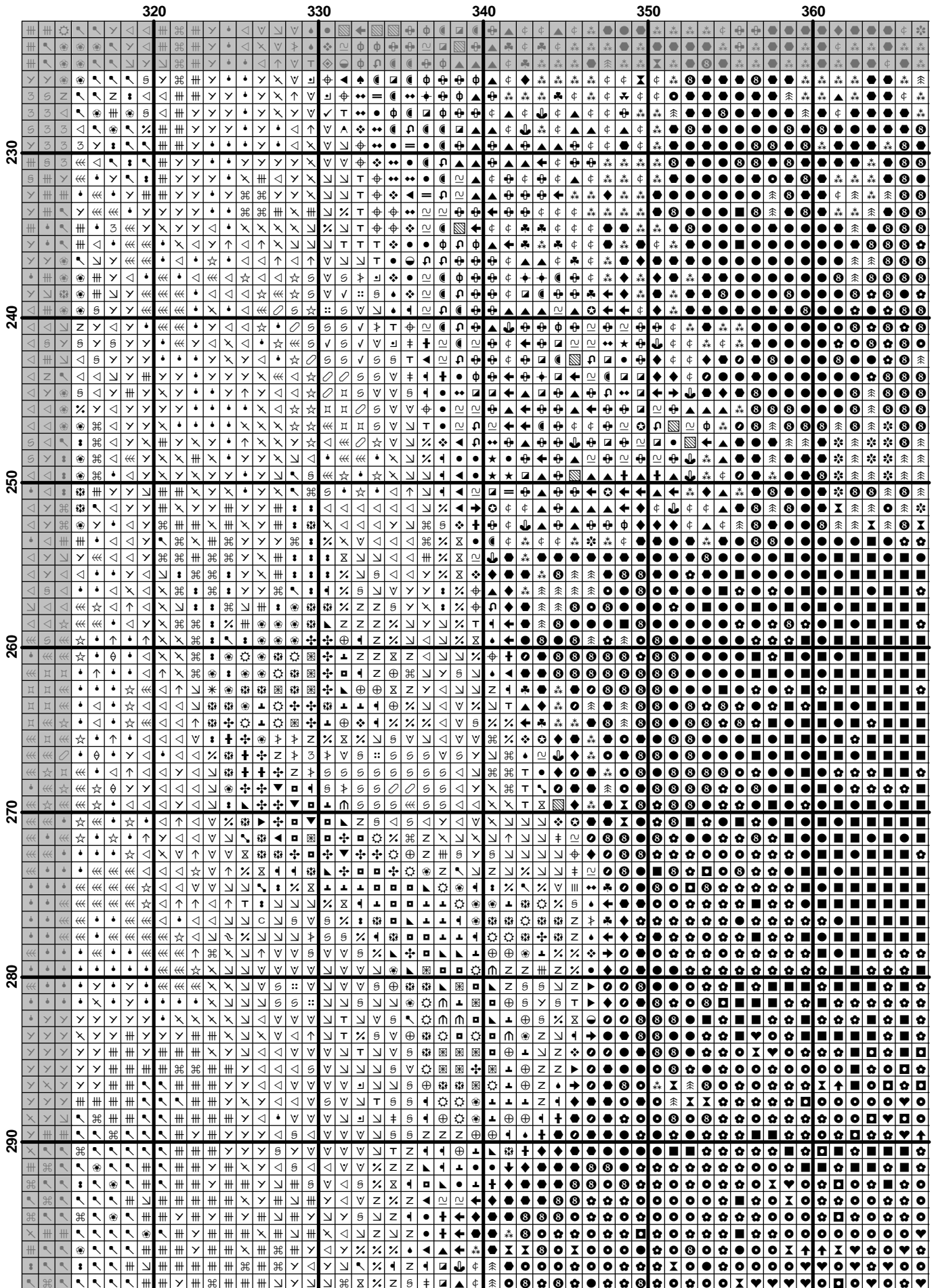


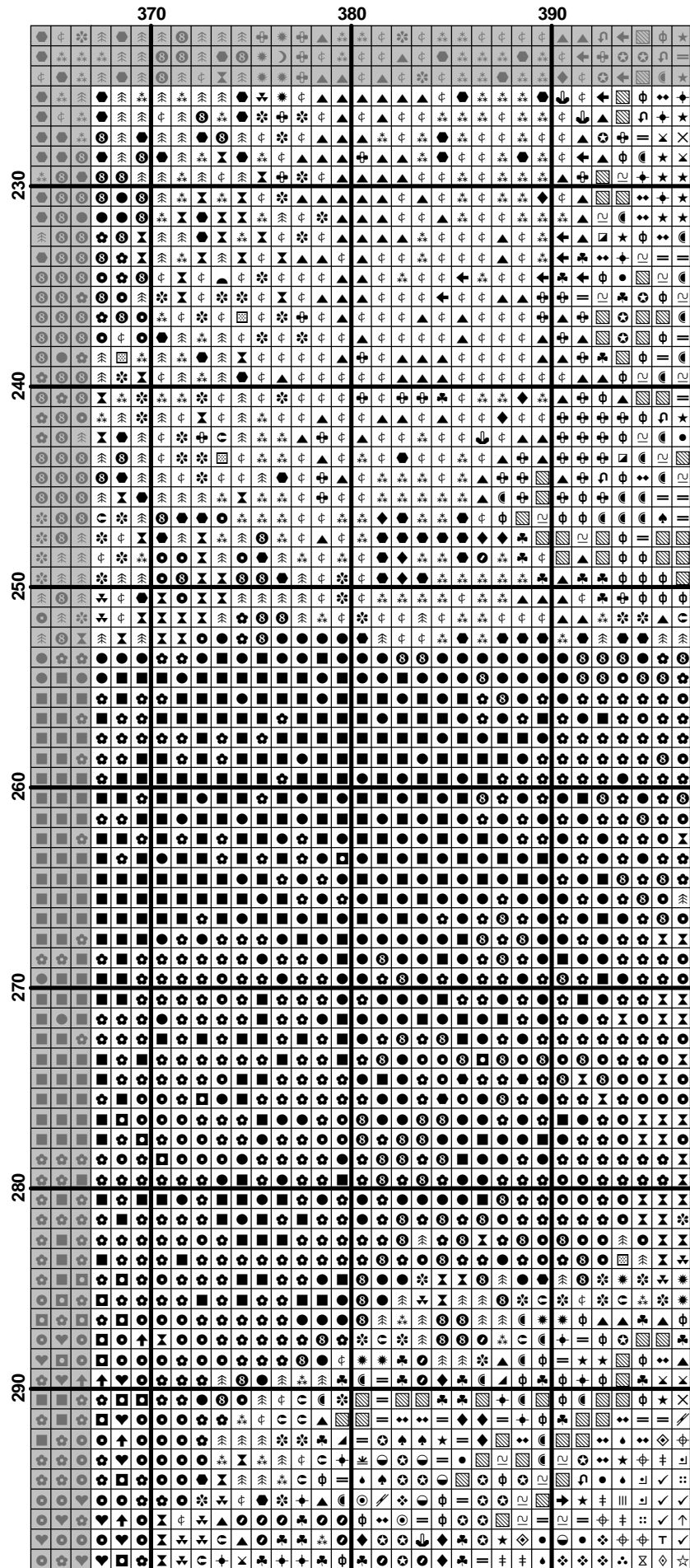




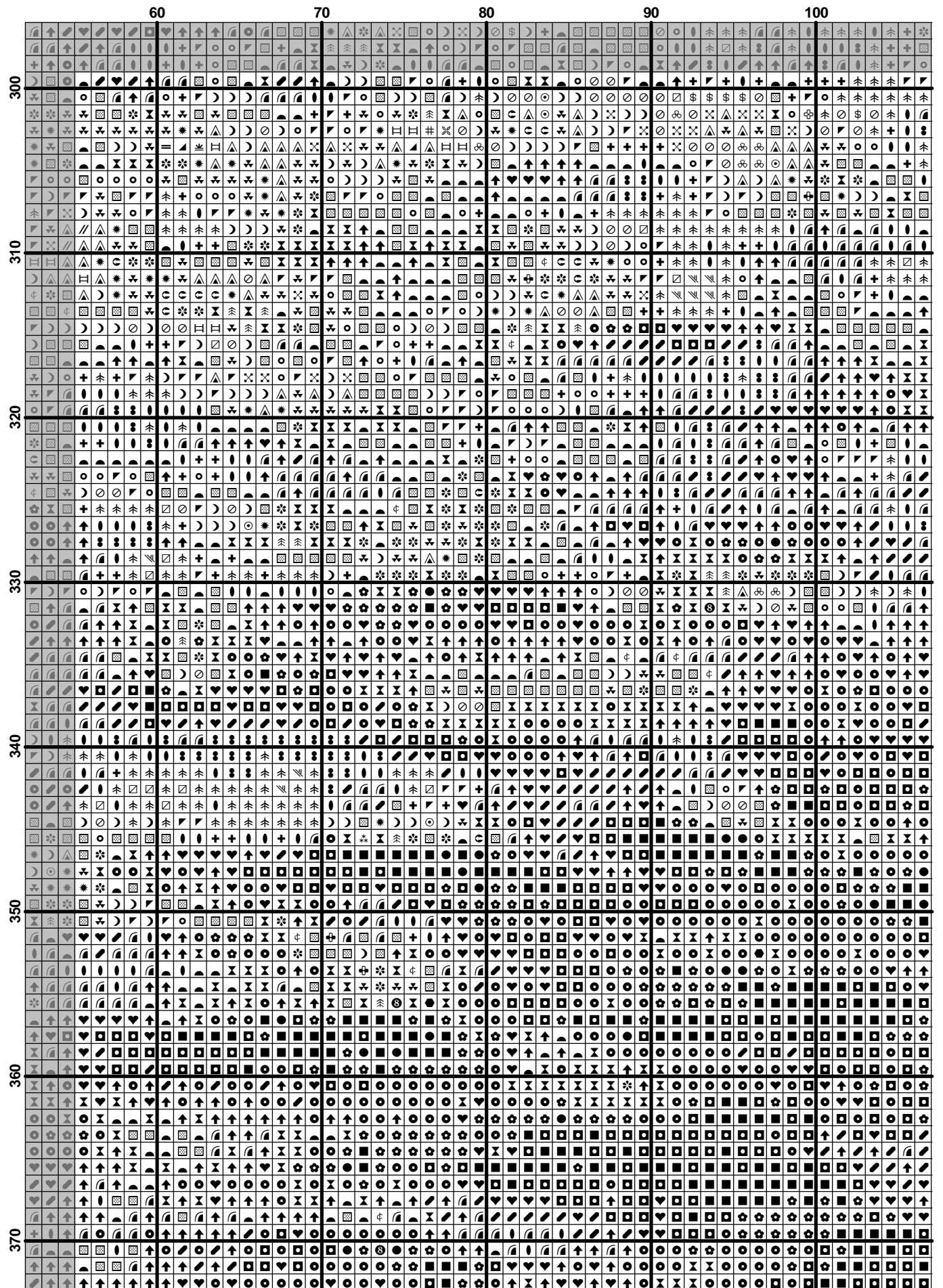


	260	270	280	290	300	310
230	0	0	0	0	0	0
	1	0	0	0	0	0
	2	0	0	0	0	0
	3	0	0	0	0	0
	4	0	0	0	0	0
	5	0	0	0	0	0
	6	0	0	0	0	0
	7	0	0	0	0	0
	8	0	0	0	0	0
	9	0	0	0	0	0
240	0	0	0	0	0	0
	1	0	0	0	0	0
	2	0	0	0	0	0
	3	0	0	0	0	0
	4	0	0	0	0	0
	5	0	0	0	0	0
	6	0	0	0	0	0
	7	0	0	0	0	0
	8	0	0	0	0	0
	9	0	0	0	0	0
250	0	0	0	0	0	0
	1	0	0	0	0	0
	2	0	0	0	0	0
	3	0	0	0	0	0
	4	0	0	0	0	0
	5	0	0	0	0	0
	6	0	0	0	0	0
	7	0	0	0	0	0
	8	0	0	0	0	0
	9	0	0	0	0	0
260	0	0	0	0	0	0
	1	0	0	0	0	0
	2	0	0	0	0	0
	3	0	0	0	0	0
	4	0	0	0	0	0
	5	0	0	0	0	0
	6	0	0	0	0	0
	7	0	0	0	0	0
	8	0	0	0	0	0
	9	0	0	0	0	0
270	0	0	0	0	0	0
	1	0	0	0	0	0
	2	0	0	0	0	0
	3	0	0	0	0	0
	4	0	0	0	0	0
	5	0	0	0	0	0
	6	0	0	0	0	0
	7	0	0	0	0	0
	8	0	0	0	0	0
	9	0	0	0	0	0
280	0	0	0	0	0	0
	1	0	0	0	0	0
	2	0	0	0	0	0
	3	0	0	0	0	0
	4	0	0	0	0	0
	5	0	0	0	0	0
	6	0	0	0	0	0
	7	0	0	0	0	0
	8	0	0	0	0	0
	9	0	0	0	0	0
290	0	0	0	0	0	0
	1	0	0	0	0	0
	2	0	0	0	0	0
	3	0	0	0	0	0
	4	0	0	0	0	0
	5	0	0	0	0	0
	6	0	0	0	0	0
	7	0	0	0	0	0
	8	0	0	0	0	0
	9	0	0	0	0	0





	10	20	30	40	50
300	...	...	...	...	...
310	...	...	...	...	...
320	...	...	...	...	...
330	...	...	...	...	...
340	...	...	...	...	...
350	...	...	...	...	...
360	...	...	...	...	...
370	...	...	...	...	...



	110	120	130	140	150
300	...	...	...	...	...
310	...	...	...	...	...
320	...	...	...	...	...
330	...	...	...	...	...
340	...	...	...	...	...
350	...	...	...	...	...
360	...	...	...	...	...
370	...	...	...	...	...



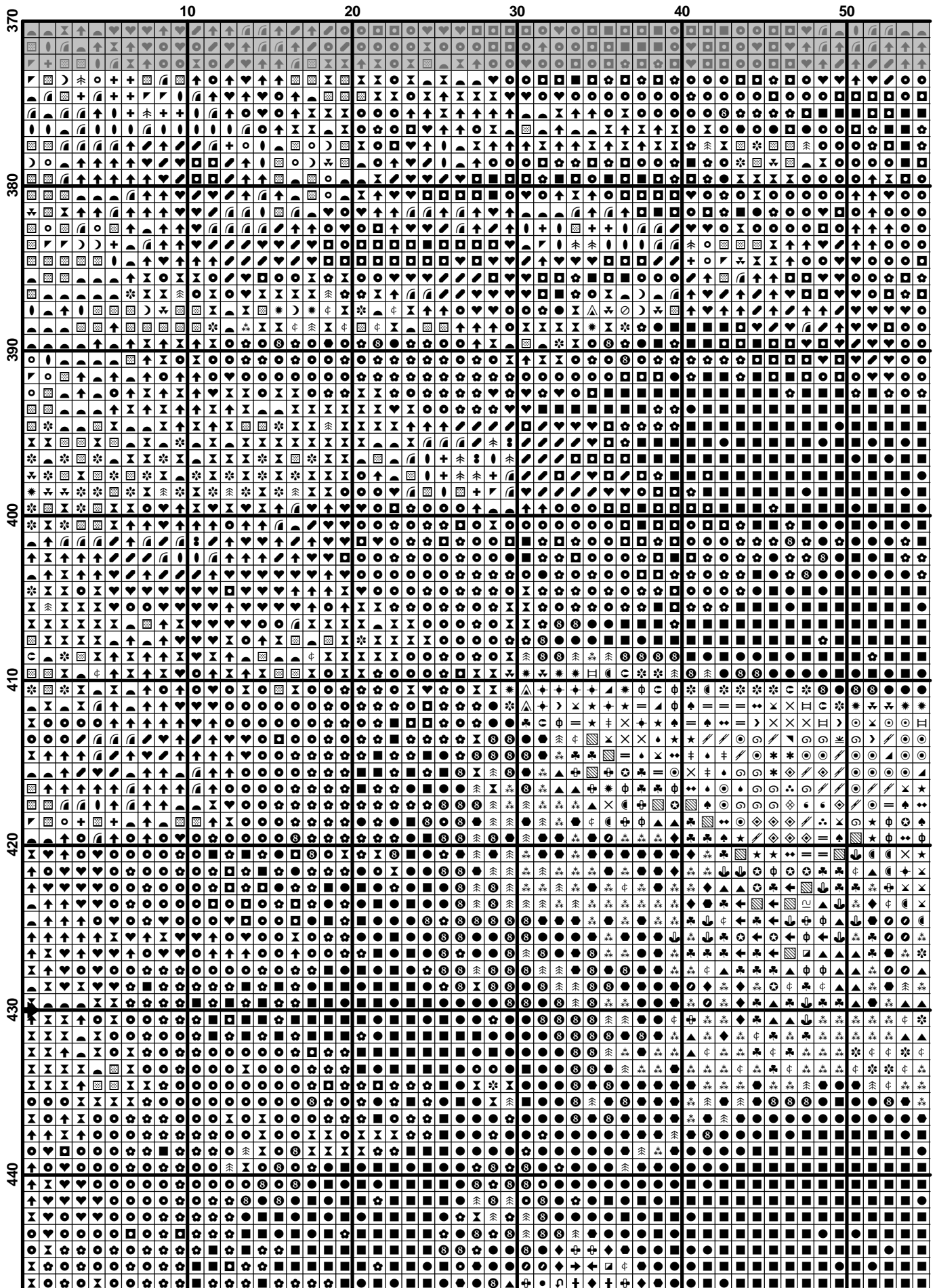
	160	170	180	190	200	210
300	T	L	L	L	L	L
301	L	L	L	L	L	L
302	L	L	L	L	L	L
303	L	L	L	L	L	L
304	L	L	L	L	L	L
305	L	L	L	L	L	L
306	L	L	L	L	L	L
307	L	L	L	L	L	L
308	L	L	L	L	L	L
309	L	L	L	L	L	L
310	L	L	L	L	L	L
311	L	L	L	L	L	L
312	L	L	L	L	L	L
313	L	L	L	L	L	L
314	L	L	L	L	L	L
315	L	L	L	L	L	L
316	L	L	L	L	L	L
317	L	L	L	L	L	L
318	L	L	L	L	L	L
319	L	L	L	L	L	L
320	L	L	L	L	L	L
321	L	L	L	L	L	L
322	L	L	L	L	L	L
323	L	L	L	L	L	L
324	L	L	L	L	L	L
325	L	L	L	L	L	L
326	L	L	L	L	L	L
327	L	L	L	L	L	L
328	L	L	L	L	L	L
329	L	L	L	L	L	L
330	L	L	L	L	L	L
331	L	L	L	L	L	L
332	L	L	L	L	L	L
333	L	L	L	L	L	L
334	L	L	L	L	L	L
335	L	L	L	L	L	L
336	L	L	L	L	L	L
337	L	L	L	L	L	L
338	L	L	L	L	L	L
339	L	L	L	L	L	L
340	L	L	L	L	L	L
341	L	L	L	L	L	L
342	L	L	L	L	L	L
343	L	L	L	L	L	L
344	L	L	L	L	L	L
345	L	L	L	L	L	L
346	L	L	L	L	L	L
347	L	L	L	L	L	L
348	L	L	L	L	L	L
349	L	L	L	L	L	L
350	L	L	L	L	L	L
351	L	L	L	L	L	L
352	L	L	L	L	L	L
353	L	L	L	L	L	L
354	L	L	L	L	L	L
355	L	L	L	L	L	L
356	L	L	L	L	L	L
357	L	L	L	L	L	L
358	L	L	L	L	L	L
359	L	L	L	L	L	L
360	L	L	L	L	L	L
361	L	L	L	L	L	L
362	L	L	L	L	L	L
363	L	L	L	L	L	L
364	L	L	L	L	L	L
365	L	L	L	L	L	L
366	L	L	L	L	L	L
367	L	L	L	L	L	L
368	L	L	L	L	L	L
369	L	L	L	L	L	L
370	L	L	L	L	L	L
371	L	L	L	L	L	L
372	L	L	L	L	L	L
373	L	L	L	L	L	L
374	L	L	L	L	L	L
375	L	L	L	L	L	L

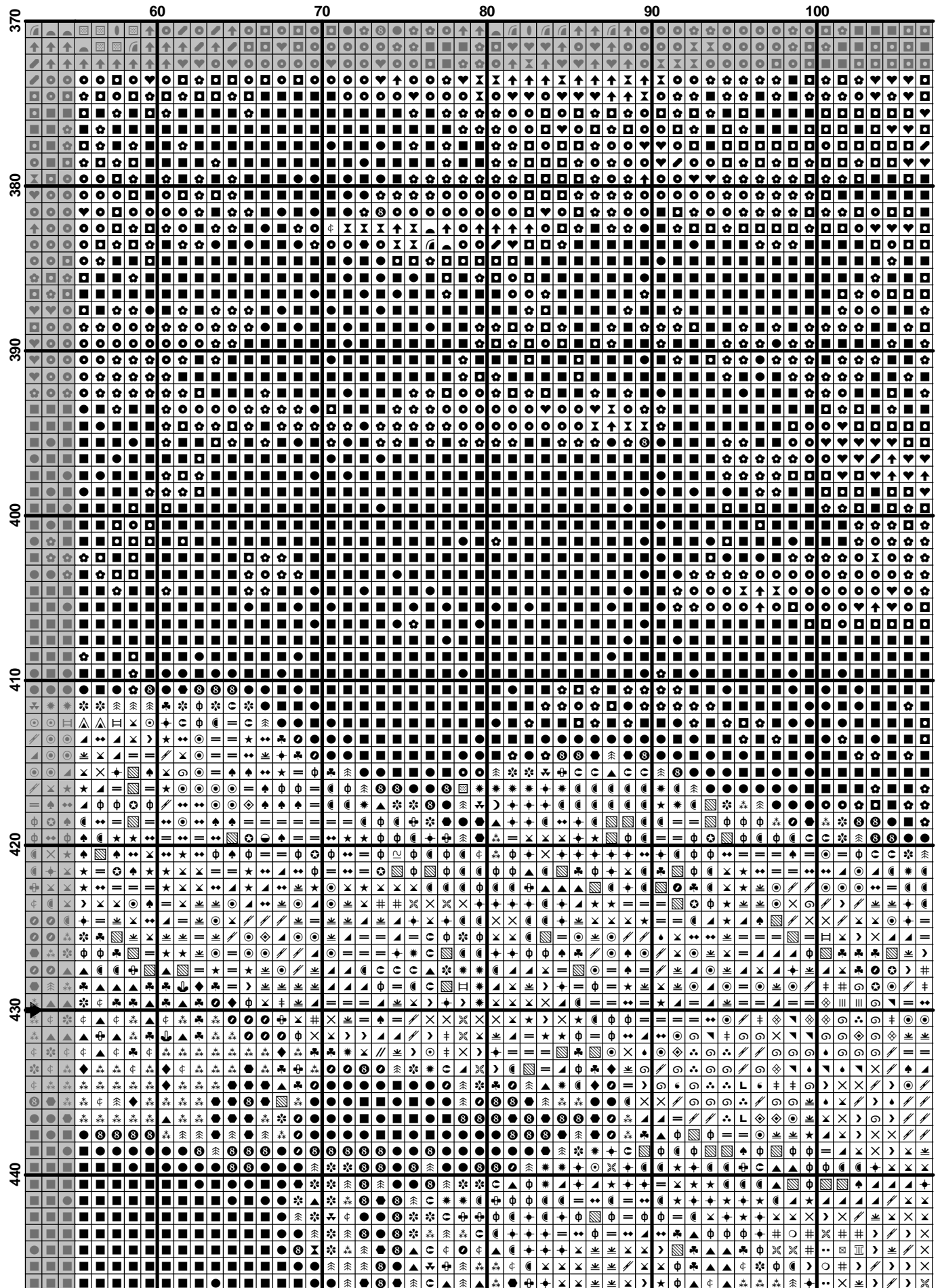


	260	270	280	290	300	310	320	330	340	350	360	370
300	...	...	...	...	...	...	...	...	...	...	...	...
310	...	...	...	...	...	...	...	...	...	...	...	...
320	...	...	...	...	...	...	...	...	...	...	...	...
330	...	...	...	...	...	...	...	...	...	...	...	...
340	...	...	...	...	...	...	...	...	...	...	...	...
350	...	...	...	...	...	...	...	...	...	...	...	...
360	...	...	...	...	...	...	...	...	...	...	...	...
370	...	...	...	...	...	...	...	...	...	...	...	...









	110	120	130	140	150
370	...	...	...	...	...
380	...	...	...	...	...
390	...	...	...	...	...
400	...	...	...	...	...
410	...	...	...	...	...
420	...	...	...	...	...
430	...	...	...	...	...
440	...	...	...	...	...



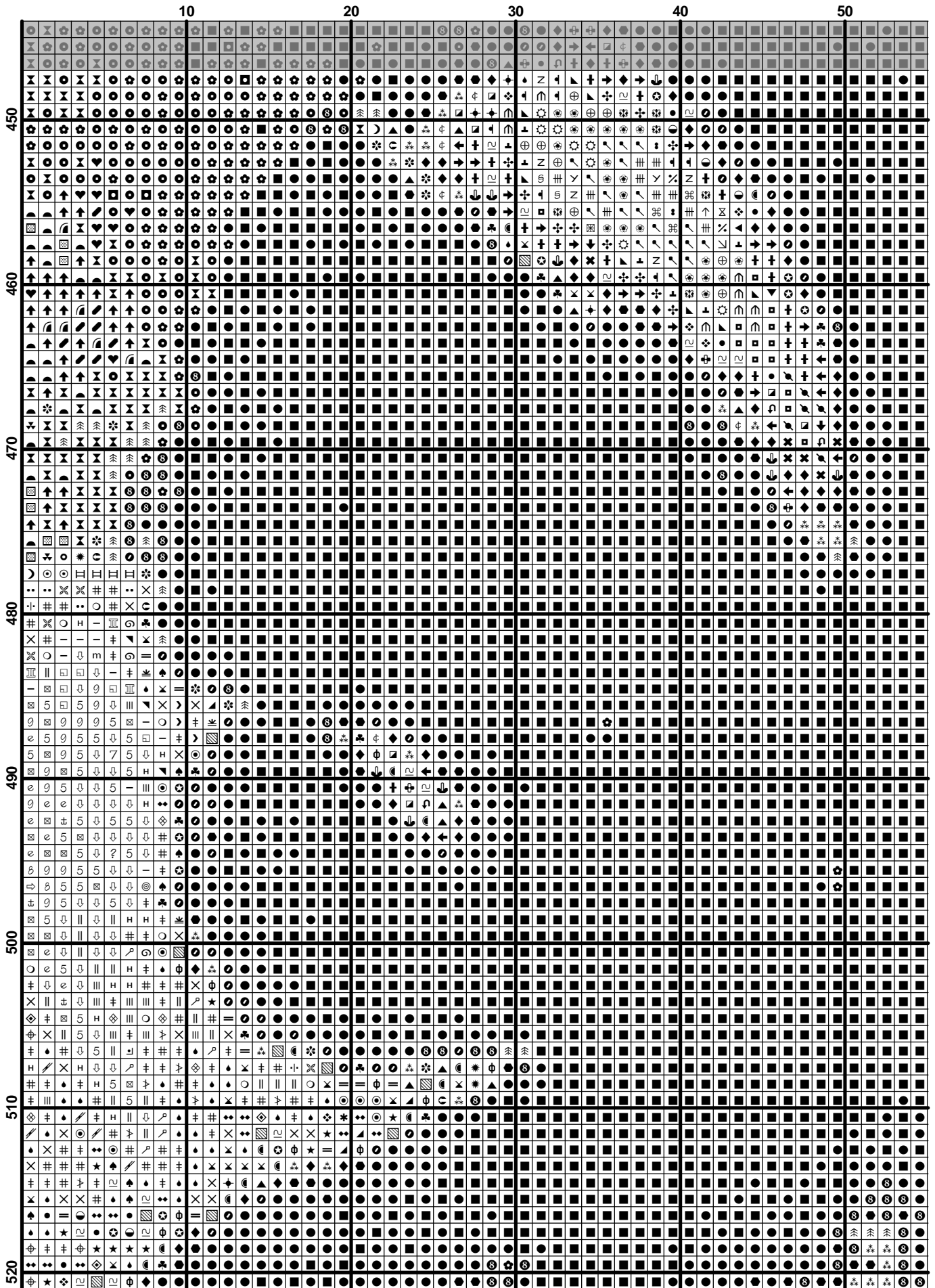
	160	170	180	190	200	210
370	H	H	>	H	H	H
371	H	H	H	H	H	H
372	H	H	H	H	H	H
373	H	H	H	H	H	H
374	H	H	H	H	H	H
375	H	H	H	H	H	H
376	H	H	H	H	H	H
377	H	H	H	H	H	H
378	H	H	H	H	H	H
379	H	H	H	H	H	H
380	H	H	H	H	H	H
381	H	H	H	H	H	H
382	H	H	H	H	H	H
383	H	H	H	H	H	H
384	H	H	H	H	H	H
385	H	H	H	H	H	H
386	H	H	H	H	H	H
387	H	H	H	H	H	H
388	H	H	H	H	H	H
389	H	H	H	H	H	H
390	H	H	H	H	H	H
391	H	H	H	H	H	H
392	H	H	H	H	H	H
393	H	H	H	H	H	H
394	H	H	H	H	H	H
395	H	H	H	H	H	H
396	H	H	H	H	H	H
397	H	H	H	H	H	H
398	H	H	H	H	H	H
399	H	H	H	H	H	H
400	H	H	H	H	H	H
401	H	H	H	H	H	H
402	H	H	H	H	H	H
403	H	H	H	H	H	H
404	H	H	H	H	H	H
405	H	H	H	H	H	H
406	H	H	H	H	H	H
407	H	H	H	H	H	H
408	H	H	H	H	H	H
409	H	H	H	H	H	H
410	H	H	H	H	H	H
411	H	H	H	H	H	H
412	H	H	H	H	H	H
413	H	H	H	H	H	H
414	H	H	H	H	H	H
415	H	H	H	H	H	H
416	H	H	H	H	H	H
417	H	H	H	H	H	H
418	H	H	H	H	H	H
419	H	H	H	H	H	H
420	H	H	H	H	H	H
421	H	H	H	H	H	H
422	H	H	H	H	H	H
423	H	H	H	H	H	H
424	H	H	H	H	H	H
425	H	H	H	H	H	H
426	H	H	H	H	H	H
427	H	H	H	H	H	H
428	H	H	H	H	H	H
429	H	H	H	H	H	H
430	H	H	H	H	H	H
431	H	H	H	H	H	H
432	H	H	H	H	H	H
433	H	H	H	H	H	H
434	H	H	H	H	H	H
435	H	H	H	H	H	H
436	H	H	H	H	H	H
437	H	H	H	H	H	H
438	H	H	H	H	H	H
439	H	H	H	H	H	H
440	H	H	H	H	H	H
441	H	H	H	H	H	H
442	H	H	H	H	H	H
443	H	H	H	H	H	H
444	H	H	H	H	H	H
445	H	H	H	H	H	H
446	H	H	H	H	H	H
447	H	H	H	H	H	H
448	H	H	H	H	H	H
449	H	H	H	H	H	H
450	H	H	H	H	H	H

	210	220	230	240	250	260
370	...	...	...	...	...	...
380	...	...	...	...	...	...
390	...	...	...	...	...	...
400	...	...	...	...	...	...
410	...	...	...	...	...	...
420	...	...	...	...	...	...
430	...	...	...	...	...	...
440	...	...	...	...	...	...

370	260	270	280	290	300	310
380						
390						
400						
410						
420						
430						
440						

	320	330	340	350	360
370	...	...	...	...	...
380	...	...	...	...	...
390	...	...	...	...	...
400	...	...	...	...	...
410	...	...	...	...	...
420	...	...	...	...	...
430	...	...	...	...	...
440	...	...	...	...	...





	60	70	80	90	100
450	...	...	...	...	...
460	...	...	...	...	...
470	...	...	...	...	...
480	...	...	...	...	...
490	...	...	...	...	...
500	...	...	...	...	...
510	...	...	...	...	...
520	...	...	...	...	...

	110	120	130	140	150
450	...	...	...	...	...
460	...	...	...	...	...
470	...	...	...	...	...
480	...	...	...	...	...
490	...	...	...	...	...
500	...	...	...	...	...
510	...	...	...	...	...
520	...	...	...	...	...



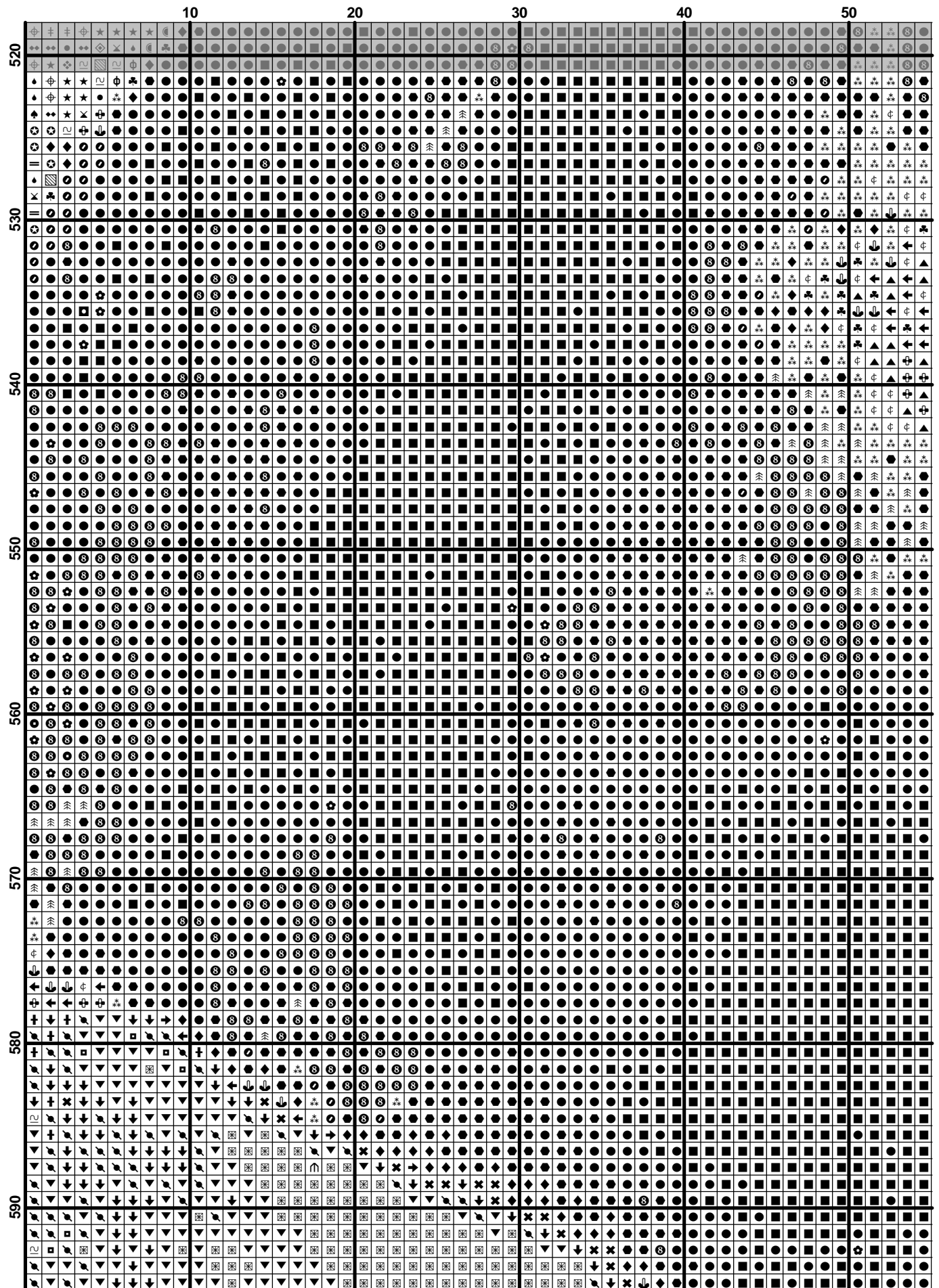
	160	170	180	190	200	210
450	9	9	9	9	9	9
460	9	9	9	9	9	9
470	9	9	9	9	9	9
480	9	9	9	9	9	9
490	9	9	9	9	9	9
500	9	9	9	9	9	9
510	9	9	9	9	9	9
520	9	9	9	9	9	9

	210	220	230	240	250	260
450	...	...	...	...	...	...
460	...	...	...	...	...	...
470	...	...	...	...	...	...
480	...	...	...	...	...	...
490	...	...	...	...	...	...
500	...	...	...	...	...	...
510	...	...	...	...	...	...
520	...	...	...	...	...	...

	260	270	280	290	300	310
450	...	...	...	...	...	...
460	...	...	...	...	...	...
470	...	...	...	...	...	...
480	...	...	...	...	...	...
490	...	...	...	...	...	...
500	...	...	...	...	...	...
510	...	...	...	...	...	...
520	...	...	...	...	...	...





















	370										380										390									
520	H	2	2	2	H	H	H	H	H	H	H	H	H	H	H	H	H	H	H	H	H	H	H	H	H	H	H	H	H	H
	H	2	2	2	H	H	H	H	H	H	H	H	H	H	H	H	H	H	H	H	H	H	H	H	H	H	H	H	H	H
	H	2	2	2	H	H	H	H	H	H	H	H	H	H	H	H	H	H	H	H	H	H	H	H	H	H	H	H	H	H

	10	20	30	40	50
600	...	...	...	...	...
610	...	...	...	...	...
620	...	...	...	...	...
630	...	...	...	...	...
640	...	...	...	...	...
650	...	...	...	...	...
660	...	...	...	...	...

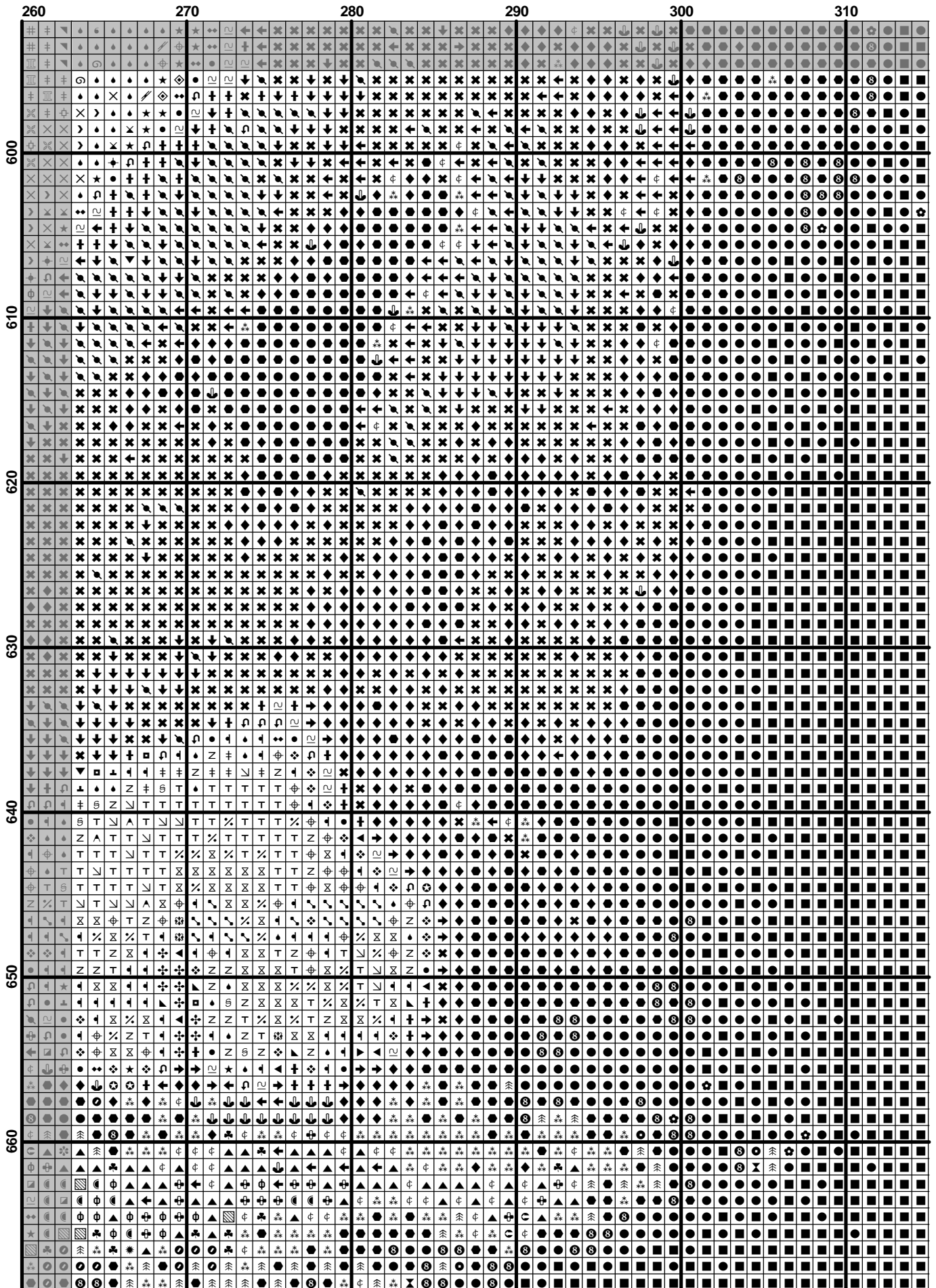
	60	70	80	90	100
600	⬆	⬆	⬆	⬆	⬆
610	⬆	⬆	⬆	⬆	⬆
620	⬆	⬆	⬆	⬆	⬆
630	⬆	⬆	⬆	⬆	⬆
640	⬆	⬆	⬆	⬆	⬆
650	⬆	⬆	⬆	⬆	⬆
660	⬆	⬆	⬆	⬆	⬆

	110	120	130	140	150
600	...	...	...	...	...
610	...	...	...	...	...
620	...	...	...	...	...
630	...	...	...	...	...
640	...	...	...	...	...
650	...	...	...	...	...
660	...	...	...	...	...



	160	170	180	190	200	210
600	...	...	...	...	...	...
610	...	...	...	...	...	...
620	...	...	...	...	...	...
630	...	...	...	...	...	...
640	...	...	...	...	...	...
650	...	...	...	...	...	...
660	...	...	...	...	...	...

	210	220	230	240	250	260
600	...	...	...	...	...	...
610	...	...	...	...	...	...
620	...	...	...	...	...	...
630	...	...	...	...	...	...
640	...	...	...	...	...	...
650	...	...	...	...	...	...
660	...	...	...	...	...	...



	320	330	340	350	360
600					
610					
620					
630					
640					
650					
660					



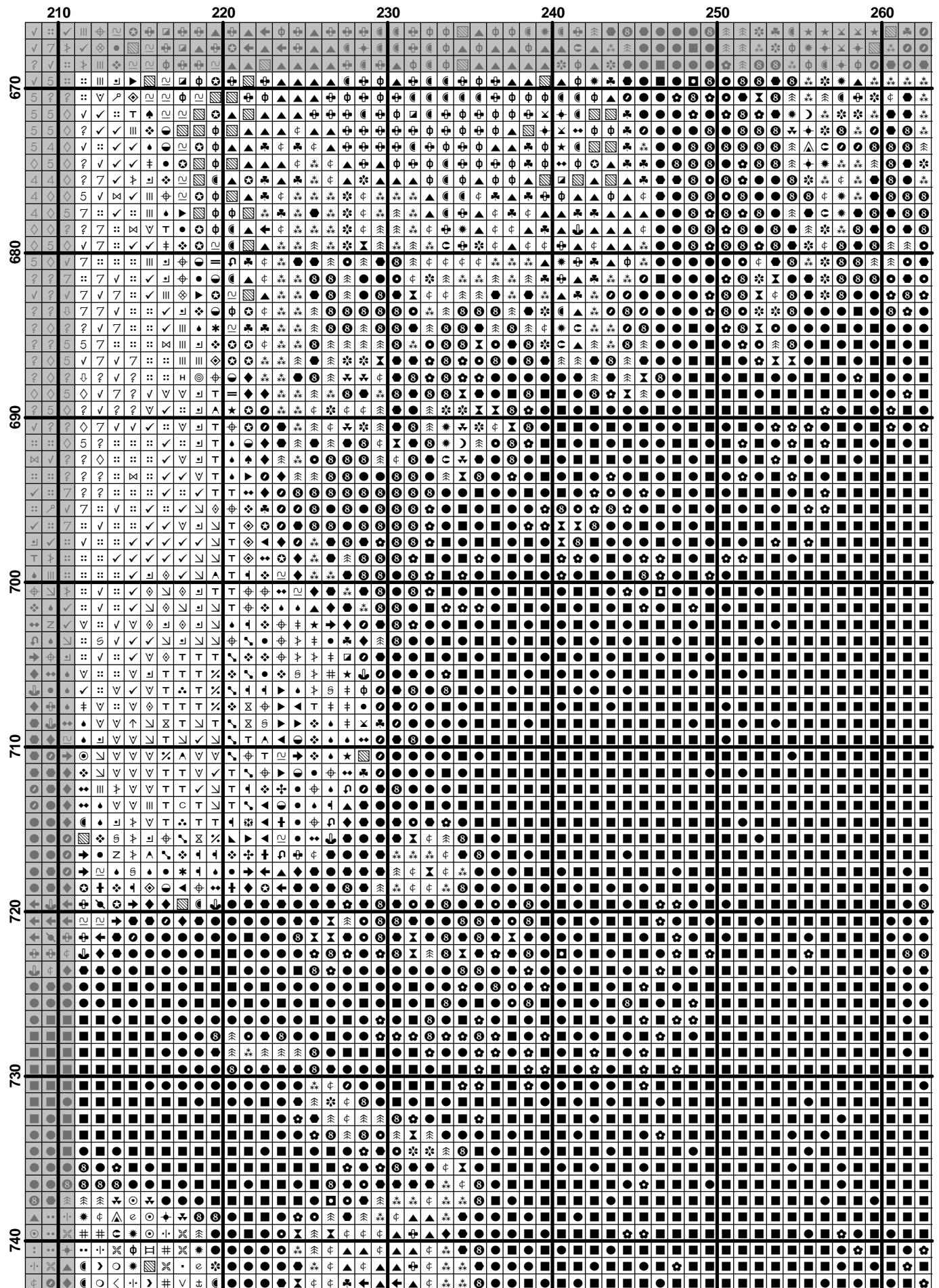
	10	20	30	40	50
670	...	...	...	...	...
680	...	...	...	...	...
690	...	...	...	...	...
700	...	...	...	...	...
710	...	...	...	...	...
720	...	...	...	...	...
730	...	...	...	...	...
740	...	...	...	...	...

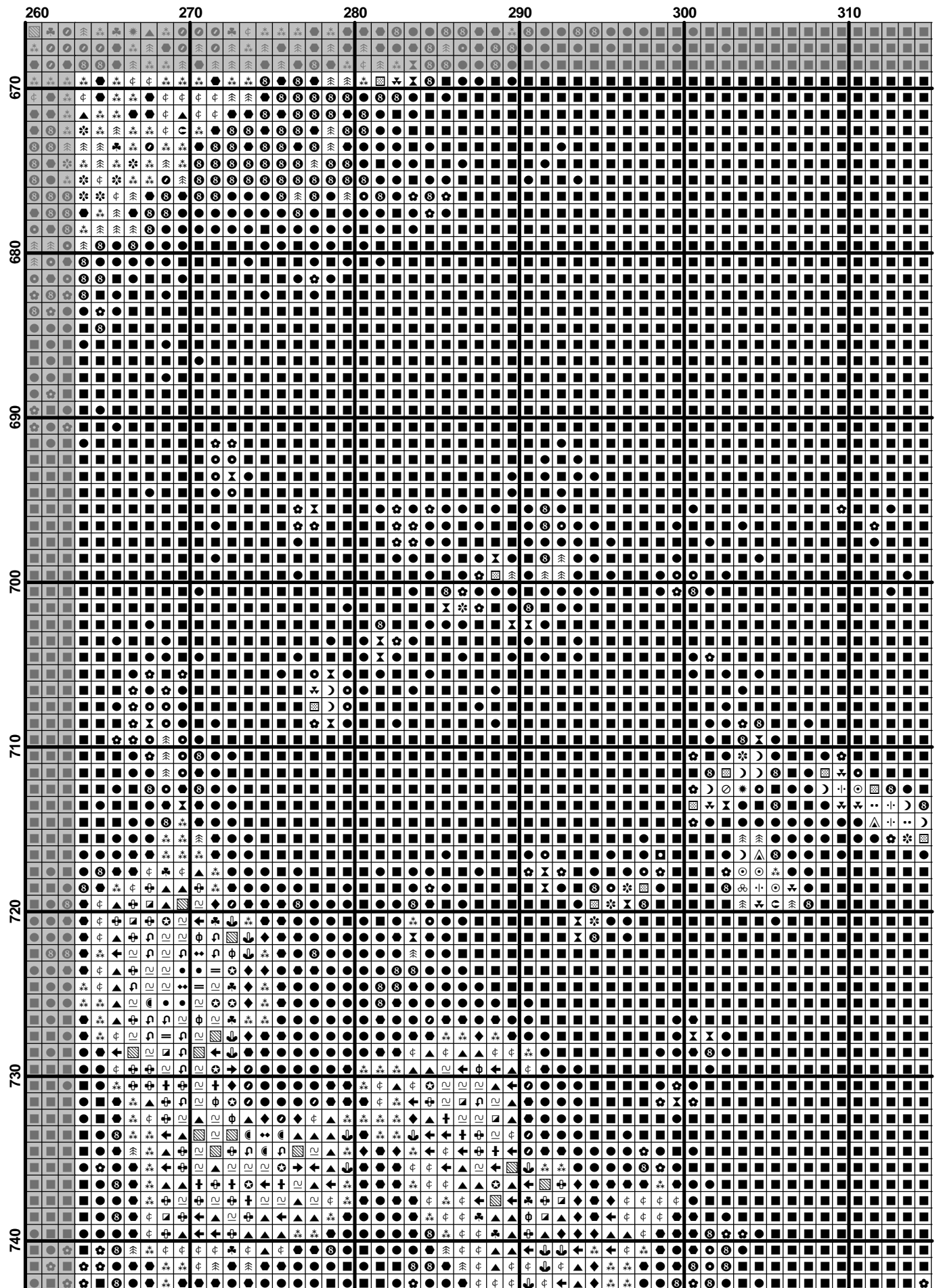


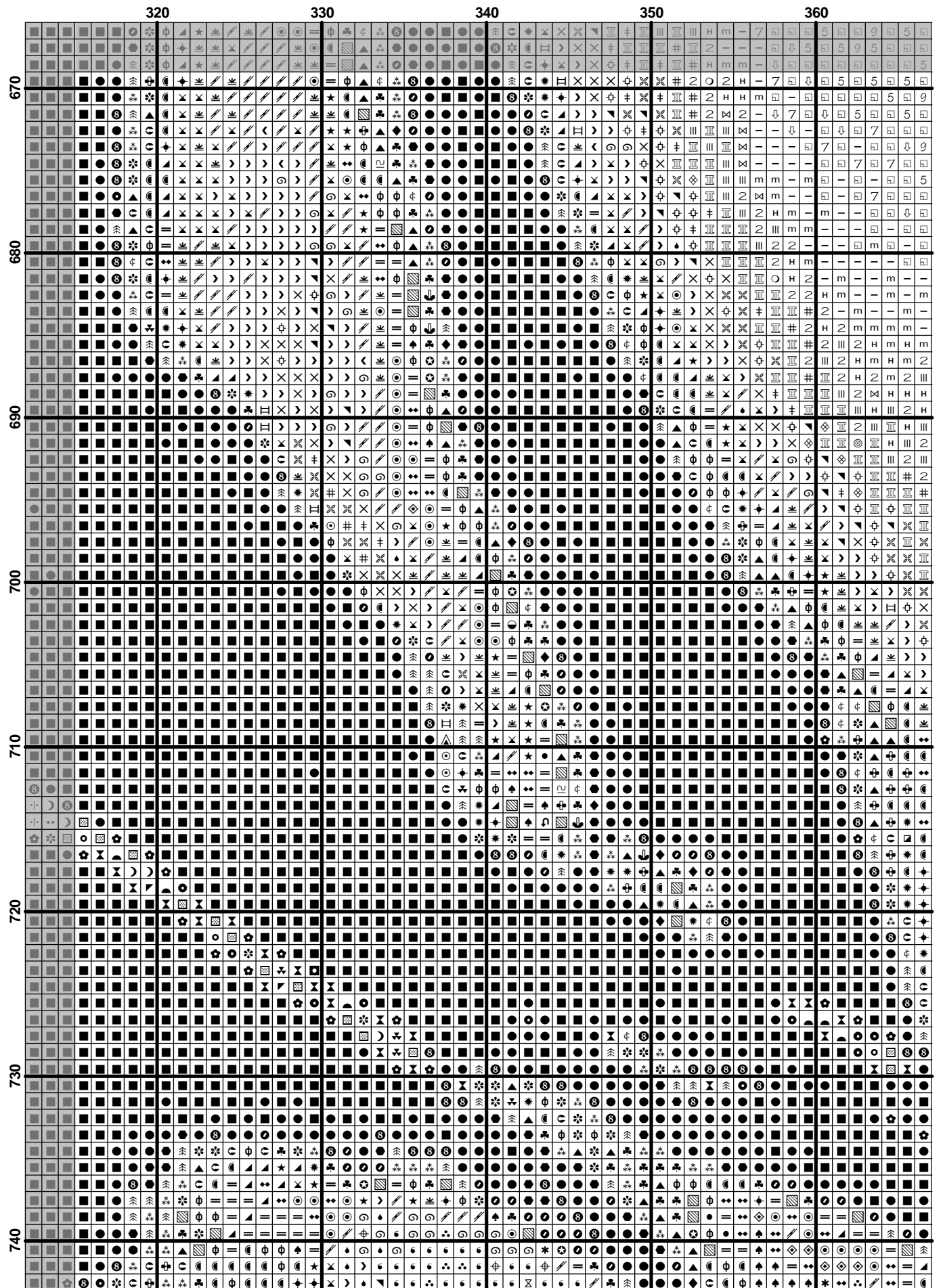
	110	120	130	140	150
670	✓✓✓49444	457::504444	44◇◇◇◇777	777777777	777777777
	◇◇◇4444	57✓✓755507	◇◇◇◇◇◇◇◇	444444444	444444444
	7◇◇◇◇◇?	7x4x555x7	✓:::4◇◇◇◇	444905577	777777777
	7::✓✓✓✓	x4x455407	x:::◇◇◇◇?	44◇◇◇◇595	777777777
	?::✓✓✓✓	x4x455407	?7x:::◇◇◇◇?	44◇◇◇◇595	777777777
680	◇7::7x7x7	777777777	777777777	777777777	777777777
	:::✓✓✓x	777777777	777777777	777777777	777777777
	◇7::7x7x7	777777777	777777777	777777777	777777777
	:::✓✓✓x	777777777	777777777	777777777	777777777
	◇7::7x7x7	777777777	777777777	777777777	777777777
690	◇7::7x7x7	777777777	777777777	777777777	777777777
	:::✓✓✓x	777777777	777777777	777777777	777777777
	◇7::7x7x7	777777777	777777777	777777777	777777777
	:::✓✓✓x	777777777	777777777	777777777	777777777
	◇7::7x7x7	777777777	777777777	777777777	777777777
700	◇7::7x7x7	777777777	777777777	777777777	777777777
	:::✓✓✓x	777777777	777777777	777777777	777777777
	◇7::7x7x7	777777777	777777777	777777777	777777777
	:::✓✓✓x	777777777	777777777	777777777	777777777
	◇7::7x7x7	777777777	777777777	777777777	777777777
710	◇7::7x7x7	777777777	777777777	777777777	777777777
	:::✓✓✓x	777777777	777777777	777777777	777777777
	◇7::7x7x7	777777777	777777777	777777777	777777777
	:::✓✓✓x	777777777	777777777	777777777	777777777
	◇7::7x7x7	777777777	777777777	777777777	777777777
720	◇7::7x7x7	777777777	777777777	777777777	777777777
	:::✓✓✓x	777777777	777777777	777777777	777777777
	◇7::7x7x7	777777777	777777777	777777777	777777777
	:::✓✓✓x	777777777	777777777	777777777	777777777
	◇7::7x7x7	777777777	777777777	777777777	777777777
730	◇7::7x7x7	777777777	777777777	777777777	777777777
	:::✓✓✓x	777777777	777777777	777777777	777777777
	◇7::7x7x7	777777777	777777777	777777777	777777777
	:::✓✓✓x	777777777	777777777	777777777	777777777
	◇7::7x7x7	777777777	777777777	777777777	777777777
740	◇7::7x7x7	777777777	777777777	777777777	777777777
	:::✓✓✓x	777777777	777777777	777777777	777777777
	◇7::7x7x7	777777777	777777777	777777777	777777777
	:::✓✓✓x	777777777	777777777	777777777	777777777
	◇7::7x7x7	777777777	777777777	777777777	777777777



	160	170	180	190	200	210
670						
680						
690						
700						
710						
720						
730						
740						







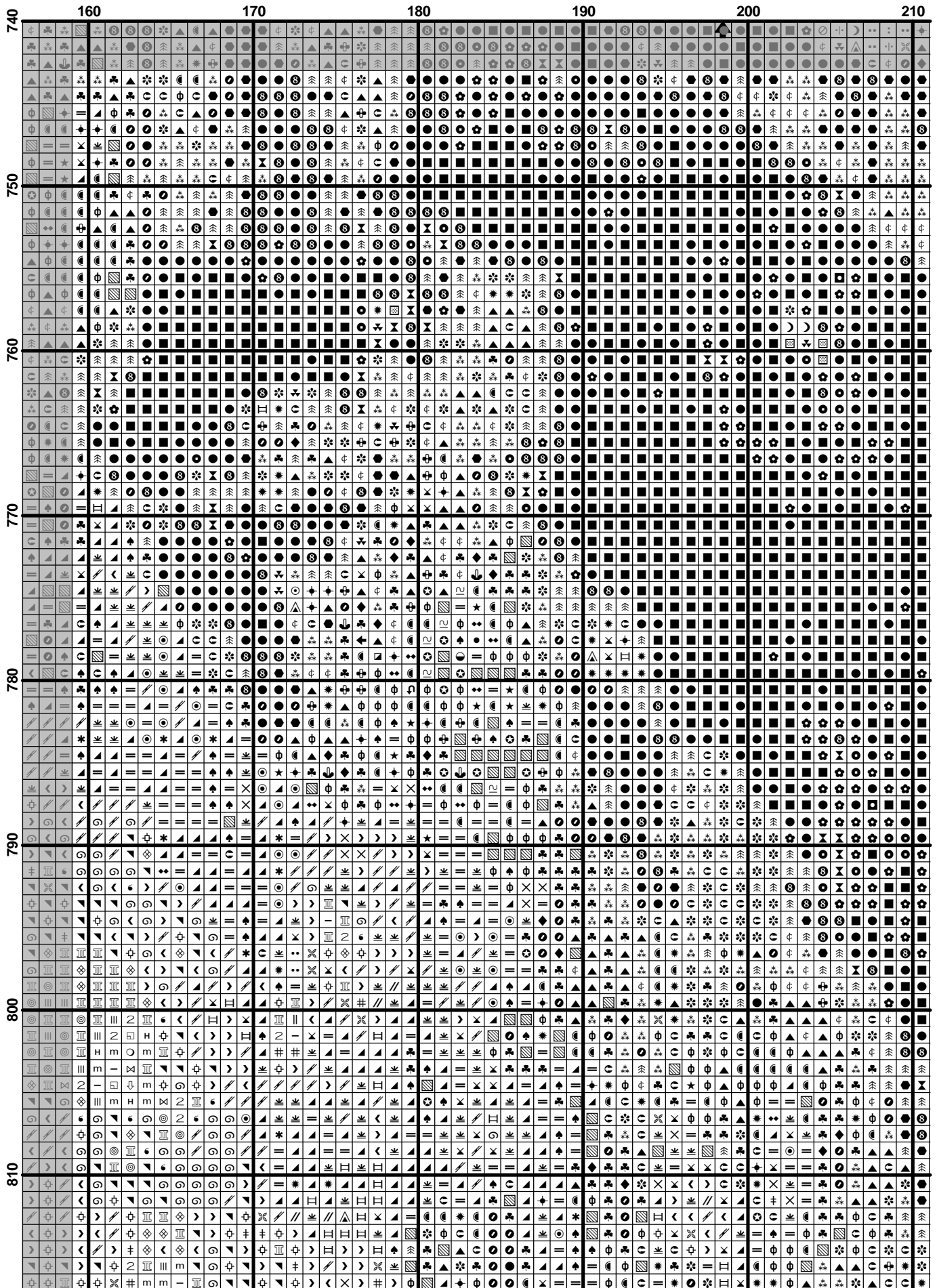


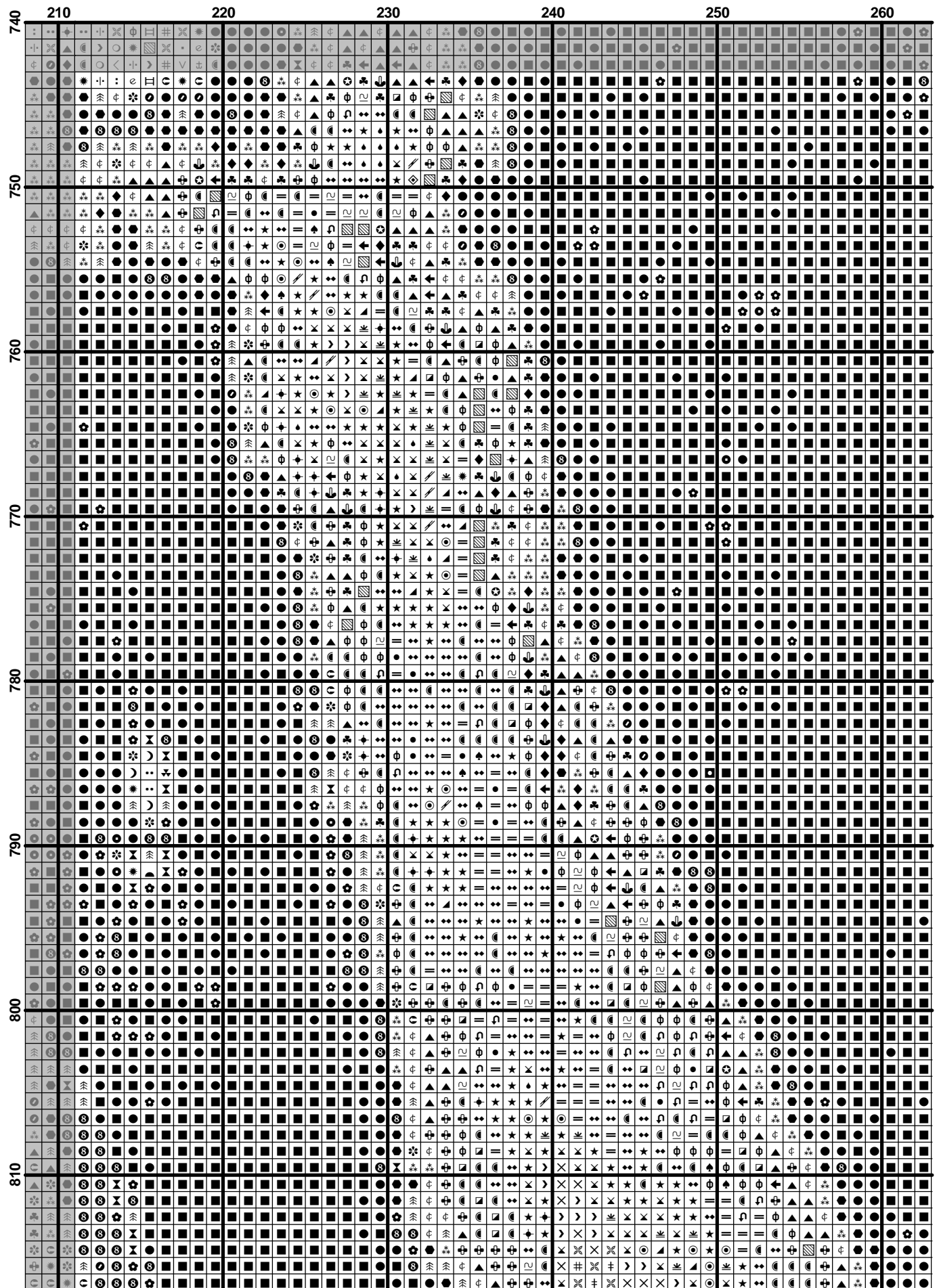
740		10	20	30	40	50
740						
750						
760						
770						
780						
790						
800						
810						

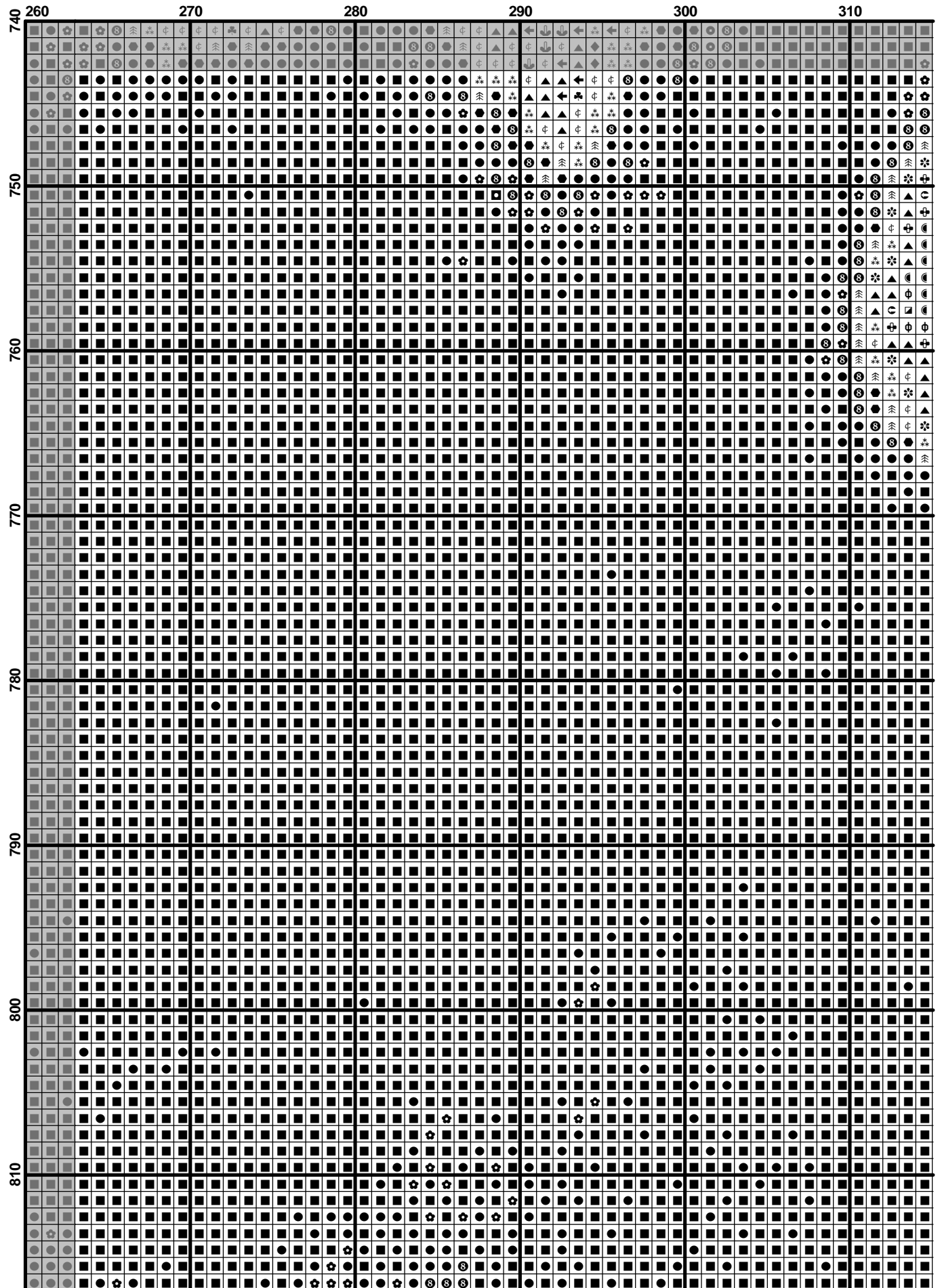
740	60	70	80	90	100
750					
760					
770					
780					
790					
800					
810					

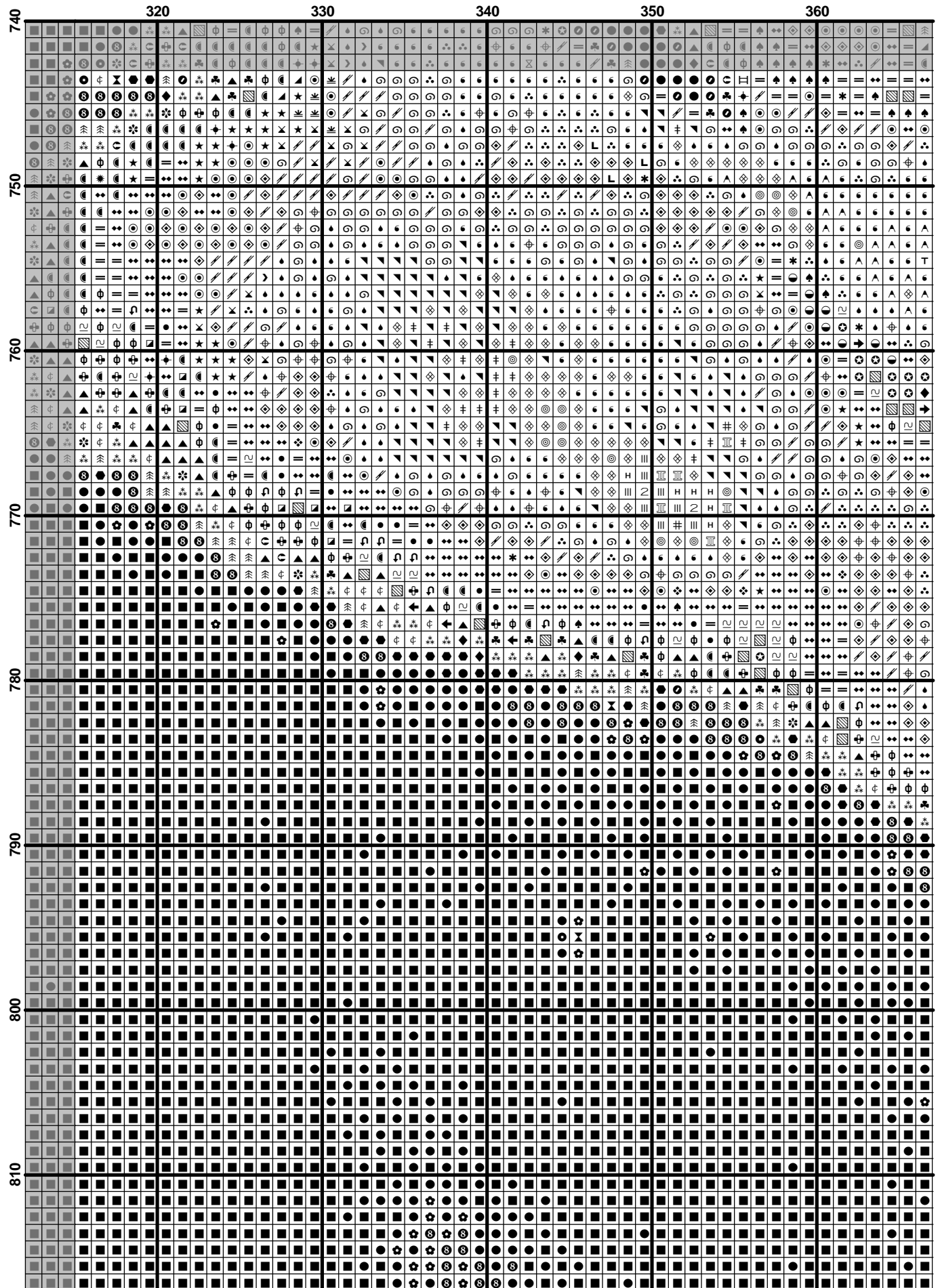
	110	120	130	140	150
740	...	...	...	...	...
750	...	...	...	...	...
760	...	...	...	...	...
770	...	...	...	...	...
780	...	...	...	...	...
790	...	...	...	...	...
800	...	...	...	...	...
810	...	...	...	...	...











740	370	380	390
750			
760			
770			
780			
790			
800			
810			





	110	120	130	140	150
820	⚡	⚡	⚡	⚡	⚡
830	⚡	⚡	⚡	⚡	⚡
840	⚡	⚡	⚡	⚡	⚡
850	⚡	⚡	⚡	⚡	⚡
860	⚡	⚡	⚡	⚡	⚡



	160	170	180	190	200	210
820	⊙	⊙	⊙	⊙	⊙	⊙
830	⊙	⊙	⊙	⊙	⊙	⊙
840	⊙	⊙	⊙	⊙	⊙	⊙
850	⊙	⊙	⊙	⊙	⊙	⊙
860	⊙	⊙	⊙	⊙	⊙	⊙



