

# Crochet pattern The little fox butterfly



MieksCreaties



 2,5 mm

**Needed**

Crochet hook 2,5 mm and 1,75mm, Fiberfill, needle, scissors



Color name	brand yarn	Color number	amount of grams	Abbreviations used in this crochet pattern	The color.
Orange	Scheepjes Larra	7404	50 gr.	<b>O</b>	
Brown	catania/catona	503	50 gr.	<b>B</b>	
Dark Brown	catania/catona	162	50 gr.	<b>B</b>	
White	catania/catona	106	5 gr. Een restje	<b>W</b>	
Lilac/ Violet/Blue	catania/catona	247	25 gr.	<b>L</b>	
Light Orange	catania/catona	411	25 gr.	<b>O</b>	
Black	catania/catona	110	25 gr.	<b>B</b>	



## Crochet pattern of the Little Fox.

Butterflies are in many beautiful colors. The little fox is a moth. With beautiful orange colored wings on the top. In the past, you saw this butterfly very much in the Netherlands, unfortunately now a lot less.

This crochet butterfly is about 4 to 5 times bigger as the real butterfly. The size of the (wing span) butterfly is flat 28 cm wide and 20 cm high. In real life ranges between 5 to 6 cm at the peacock . Do you want a smaller butterfly, use a small hook and thinner yarn.

There are several ways to fly or hang the crochet butterfly.

Lots of crochet fun with this butterfly!

Annemiek



Abbreviations used	
This pattern is written using American crochet terminology	
bo	Bind off
ch	chain
tch	Turning Chain
dc	double crochet
dec	single crochet decrease
hdc	half double crochet
inc	single crochet increase
sc	single crochet
sl.st	slip stitch
st	stitch
tr	Treble crochet
dtr	Double Treble Crochet
fo	Front loops only
blo	Back loops only
( )	repeat stitches inside parentheses the indicated number of times
**	*crochet in the same stitch*

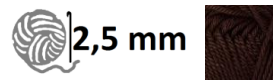
Tip: It is convenient to do the color change in the last stitch of previous row, only this way you get the most beautiful color changes.

The rounds of the pattern can be seen in the first column. The explanation can be found in the second column. The colors you use is shown in the third column and the number of stitches in the last column. See below for an example.

Round	explanation crochet stitches	Color	stitches
1	Magic ring with 6sc	6B	6







**Body.** Use Brown 162. Crochet only in the back loops.

1	Magic ring with 6sc	<b>B</b>	6
2	blo (sc, inc.) around	<b>B</b>	9
3	blo 9sc	<b>B</b>	9
4	blo (2sc, inc.) around	<b>B</b>	12
5-7	blo 12sc	<b>B</b>	12
8	blo (3sc, inc.) around	<b>B</b>	15
9-12	blo 15sc	<b>B</b>	15
13	blo (4sc, inc.) around	<b>B</b>	18
14- 22	blo 18sc	<b>B</b>	18
Fill up the body.			
23	blo dec. around	<b>B</b>	9
24	blo 9sc	<b>B</b>	9
25	blo 9sc. BO.	<b>B</b>	9

Row 23-25 is the head of the body.



**Antennae 2x.** Use crochet needle 1,75 mm. Use Black.



1	20ch + 1tch	<b>20B</b>	20
2	3sl.st. en BO.		

Sew the Antennae on the sides of the head.



**Legs. 4x** Use crochet needle 1,75 mm. Use Black.



1	10ch,BO	<b>10 B</b>	10
---	---------	-------------	----

Sew 2 legs on row 12 of the body, with 3 stitches between.

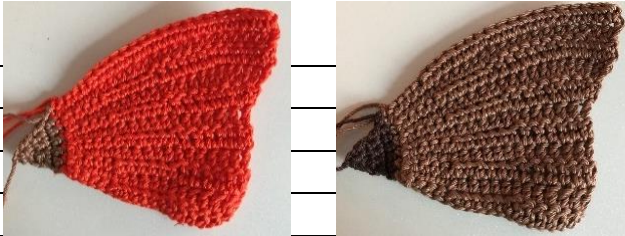
Sew 2 legs on row 16 of the body, with 3 stitches between.





**Wing A front and back side.**

Crocheted in rows with a turning chain. Crochet it 1x in the colors for the front: Brown 508 and Orange 7404 Larra. And 1x for the back site, in the colors dark brown 162 and brown 508.

	Start crocheting the front wing, using color Brown 508 Start crocheting the front wing, using color Dark brown 162		Colors Front site	Colors Back site
				
1	1ch+ tch		B	B
2	Inc.+ tch		B	B
3	1sc, inc.+ tch		B	B
4	2sc, inc.+ tch		B	B
5	3sc, inc.+ tch		B	B
6	4sc, inc.+ tch, change color to Orange. Or if your crocheting the back, to brown 508		O	B
7	6sc, 16ch + 2tch.		O	B
8	Crochet on the chains, 6 dc, 6hdc, 4sc, sl.st. in the first sc of row 7 + tch.		O	B
Crochet only on the sc, hdc or dc. Do not crochet on the turning chains.				
9	4sc, 6hdc, 6dc + 2tch.		O	B
10	6 dc, 6hdc, 4sc, sl.st. in the second sc of row 7 + tch.		O	B
11	4sc, 6hdc, 6dc + 2tch.		O	B
12	6 dc, 6hdc, 4sc, sl.st. in the third sc of row 7 + tch.		O	B
13	4sc, 6hdc, 6dc + 2tch.		O	B
14	*2dc*, *2dc*, 4 dc, 6hdc, 4 sc, sl.st. in the fourth sc of row 7 + tch.		O	B
15	4sc, 6hdc, 5dc, 2dc*,2dc*,2dc*+ 2tch		O	B
16	11dc, 6hdc, 4sc, sl.st. in the fifth sc of row 7+ tch.		O	B
17	4 sc, 16 hdc, *2hdc*+ 2tch		O	B
18	18 hdc, 4sc, sl.st. in the sixth sc of row 7+ BO		O	B
<p><b>Edge Wing A.</b> Use brown 508. Hook over the two wings there. Lay down the orange and brown wing on each other. Keep the orange side at the top by crocheting the edge. Start on the short side of the wing. It is important that the numbers of stitches are the same as written in the pattern.</p> <p>Crochet : 22cs, *3sc*, 11 cs,*2sc*, 11sc *3sc*,30sc, sl.st. in the first sc, BO.</p> <p><b>Edge Wing A .</b> Attach Dark Brown 162 at the 20<sup>th</sup> sc. Keep the orange side at the top by crocheting the edge.</p> <p>Crochet : sl.st., *2sc*, 2sc,*hdc+dc*, ch, *dc+hdc*sc, hdc, *dc+dc*, ch, *dc+dc*, hdc, sc, *hdc+dc*, ch, *dc+hdc*, sc, *hdc+dc*, ch, *dc+hdc*, 4sc, hdc, *2dc*, *dc+tr*, chain 3+ sc in the first of the tree chains, *tr+dc*, *2dc*, 3dc, hdc, sc, sl.st, BO. This is not a complete round.</p>				





Crochet a row of sl.st. using brown 508, above the brown edge on the red stripe in the picture.







2,5 mm

## Wing B.

<p><b>Wing B. Crochet row 1-18 just the same as wing A.</b></p> <p><b>Edge Wing B</b></p> <p>The brown edge is just the other way around. Use brown 508. Hook over the two wings there. Lay down the orange and brown wing on each other. Keep the orange side at the top by crocheting the edge. Start on the longest side of the wing. It is important that the numbers of stitches are the same as written in the pattern.</p> <p>Crochet : 30cs, *3sc*, 11 cs,*2sc*, 11sc *3sc*,22sc, sl.st. in the first sc, BO.</p>
<p><b>Edge Wing B.</b></p> <p>Attach Dark Brown 162 at the longest side at the 28<sup>th</sup> sc. Keep the orange side at the top by crocheting the edge.</p> <p>Crochet : sl.st., sc, hdc, 3dc, *2dc*, *dc+tr*, chain 3+ sc in the first of the tree chains, *tr+dc*, *2dc*,2dc, hdc, 4sc, hdc+dc*, ch, *dc+hdc*, sc, hdc+dc*, ch, *dc+hdc*sc, hdc, *dc+dc*, ch, *dc+dc*, hdc, sc, *hdc+dc*, ch, *dc+hdc*, 2sc, *2sc*, sl.st. BO. This is not a complete round.</p>



Crochet a row of sl.st. using brown 508, above the brown eadge on the red stripe in the picture.









### Finishing upper wings

Use, Black, light orange and white. Crochet 2x. Crochet in rows with a turning chain.  
On page 16, is the pattern for the back site.

1	Chain 4+ tch.	B	4
2-3	4sc+ tch, change color after row 3, to orange.	B	4
4-6	4sc+ tch, change color after row 6, to black.	O	4
7-10	4sc+ tch, change color after row 10, to light Orange.	B	4
11-14	4sc+ tch, change color after row 14, to black.	O	4
15-17	4sc+ tch, change color after row 17, to white	B	4
18-19	4sc+ tch, change color after row 19, to black	W	4
20-21	4sc+ tch, BO after row 21.	B	4



### Black/Orange dots 2x. Use, Black, light orange.

1	MR 6, sl.st in the first sc, change color to orange.	Z	4
2	*chain 3+2dc*, *2dc+3ch* + BO. This is not a complete round.		



**Lilac edge 4x** use color: Lilac/ Violet/Blue 247 and Black 110.  
2x for the frontside and 2x for the backside.



1	Chain 25+ tch	L	25
2	(*hdc+ch+hdc*, 3sl.st., repeat between hooks 5 times),*hdc+ch+hdc*, sl.st BO.	L	
3	Attach by the first hdc of row 2. Crochet 5 sl.st BLO, 1 long sc= a long sc is a sc all over the bleu part., 5 sl.st BLO, 1 long sc, 5 sl.st BLO, 1 long sc, 5 sl.st BLO, 1 long sc, 5 sl.st BLO, 1 long sc, 5 sl.st BLO, 1 long sc, 5 sl.st BO.	B	



**Black dots 4x. Use Black.**



1	MR 4+ sl.st. in the first sc.	B	4
---	-------------------------------	---	---





**Finishing front of the upper site wing.**

Use textile glue. Glue all the parts on the correct spot, just like the picture's.





**Wings downside.2x.** Crochet it 2x in orange and 2x time in Brown  
Crocheted in rows with a turning chain. Use Brown, Orange and Dark Brown.

		Colors front side.	Colors Backsite
1	1ch+ tch	B	B
2	Inc.+ tch	B	B
3	1sc, inc.+ tch	B	B
4	2sc, inc.+ tch	B	B
5	3sc, inc.+ tch	B	B
6	4sc, inc.+ tch, change color to Orange. Or if your crocheting the back, to brown 508	O	B
7	6sc, 12ch + 2tch.	O	B
8	Crochet on the chains, 6 dc, 4hdc, 2sc, sl.st. in the first sc of row 7 + tch.	O	B
Crochet only on the sc, hdc or dc. Do not crochet on the turning chains			
9	2sc, 4hdc, 6dc + 2tch.	O	B
10	6 dc, 4hdc, 2sc, sl.st. in the second sc of row 7 + tch.	O	B
11	2sc, 4hdc, 6dc + 2tch.	O	B
12	6 dc, 4hdc, 2sc, sl.st. in the third sc of row 7 + tch.	O	B
13	2sc, 4hdc, 6dc + 2tch.	O	B
14	6 dc, 4hdc, 2sc, sl.st. in the fourth sc of row 7 + tch.	O	B
15	2sc, 4hdc, 6dc + 2tch.	O	B
16	6 dc, 4hdc, 2sc, sl.st. in the fifth sc of row 7 + tch.	O	B
17	2cs, 10 hdc+2tch.	O	B
18	10 hdc, 2sc+ sl.st. in the sixth sc of row 7, BO.	O	B
<p><b>Edge of the wing.</b> Hook over the two wings there. Lay down the Orange and brown wing on each other. Keep the orange side at the top by crocheting the edge, Start on row 1 of the wing. It is important that the numbers of stitches are the same as written in the pattern. Crochet: 19sc, *3sc* = the corner , 23sc, *3v*, 19sc. BO.</p>			
<p><b>Attache dark brown.</b> Keep the orangeside at the top by crocheting the edge. Start on row 1 of the wing. Crochet: 20sc, *2sc*, 3sc, *hdc+dc*, ch, *dc+hdc*, 4sc, *hdc+dc*, *dc+dc*, *dc+tr*, chain 3+ sc in the first of the tree chains, *hsc+dc*, *dc+dc*, *dc+hdc*, 4sc, *hdc+dc*, 3sc, *2sc*, 20sc, BO. Leaf a long tail for sewing the wing on the body.</p>			

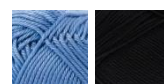




Crochet a row of sl.st. using brown 508, above the brown eadge on the red stripe in the picture.



**Lilac edge 4x** use color: Lilac/ Violet/Blue 247 and Black 110.  
2x for the frontside and 2x for the backside.



 2,5 mm

1	Chain 25+ tch	L	25
2	(*hdc+ch+hdc*, 3sl.st., repeat between hooks 5 times),*hdc+ch+hdc*, sl.st, change to black.	L	
3	2s sl.st. on each chain of row 1, sl.st.	Z	25
4	Crochet on the others site, over row 2. over the bleu part., 5 sl.st BLO, 1 long sc, 5 sl.st BLO, 1 long sc, 5 sl.st BLO, 1 long sc, 5 sl.st BLO, 1 long sc, 5 sl.st BO.	Z	





**Black/Orange Dots. Downsite wing. 2x. Use Black and Orange.**

Crocheted in rows with a turning chain.



**2,5 mm**

1	Chain 3+ 2tch	Z	3
2	3 hdc+ 2tch	Z	3
3	Hdc, *2hdc*, hdc+ 2tch.	Z	4
4	4 hdc, change to color orange+ 2tch.	Z	4
5	4 hdc, BO	O	4

Glue all parts on the wing.





**The back site of the butterfly.** Crochet this 2x. Crocheted in rows with a turning chain.

Use: Black, dark brown, light brown. A little piece of white.

1	Chain 4+ tch.	Z	4
2-3	4sc+ tch, change color after row 3, to light brown	Z	4
4-6	4sc+ tch, change color after row 6, to dark brown	B	4
7-10	4sc+ tch, change color after row 10, to light brown	B	4
11-14	4sc+ tch, change color after row 14, to dark brown	B	4
15-17	4sc+ tch, change color after row 17, to light brown	B	4
18-19	4sc+ tch, change color after row 19, to dark brown	B	4
20-21	4sc+ tch, BO after row 21. Crochet 3sl.st. with white on row 19-20. BO. Use textile glue to glue the parts on the wing.	B	4





Broen piece for the back site wing. 2x, use dark brown 162.



1	Chain 8+ 2tch	<b>B</b>	8
2	8 dc+ 2tch	<b>B</b>	8
3	*3dc*, 6dc, *3dc* + 2tch	<b>B</b>	12
4	*3dc*, 10dc, *3dc* + 2tch. BO. Glue the part on the wing with textile glue, see the picture.	<b>B</b>	16





Pin the two lower wings to the body by round 1 - 15 . Under the body can sew the wings to each other, which are about 6 sc. Sew the wings with dark brown on the body. Sew through the whole body.



Pin the two upper wings to the body and slightly over the lower wing . See the blue dotted lines for sewing the wings.





Congratulations! Your butterfly is ready !! This is the top of the little fox butterfly.



The back side of the little fox.

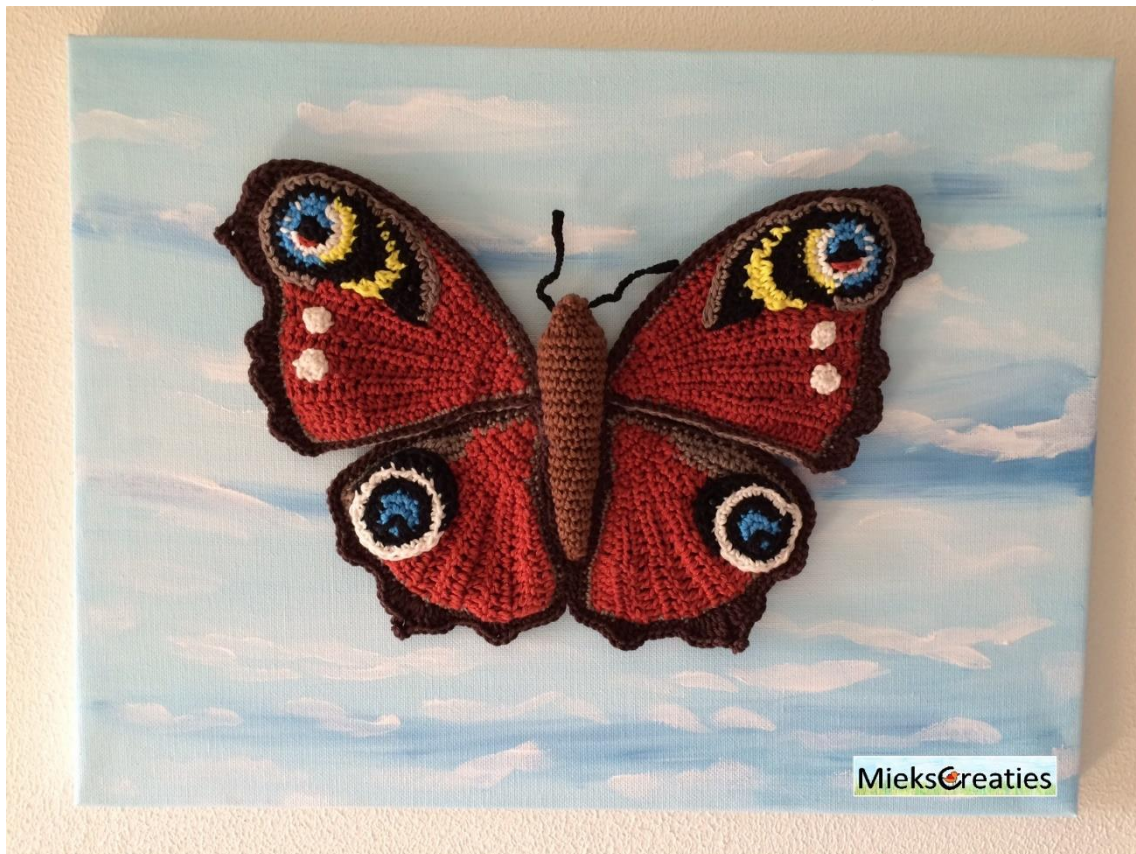




### Butterfly fly.

Use a Nylon transparent thread on to the wings so the butterfly can fly. So you can hang the butterfly. I used a Nylon thread transparent 0.20mm x 100m .

The butterfly can be hang on canvas like a painting. If you choose this option , you do not have to crochet the back of the butterfly, and no legs. In the example I used a canvas of 40x30 cm. And with blue and white paint created a cloud background.





©2017, crochet pattern of the little fox butterfly is created by: MieksCreaties, Annemiek Strating Dilling.

This pattern is for personal use only. Please do not sell, distribute, or rewrite this pattern in any way. Mass production/factory production of dolls made from this pattern is not allowed. Please do not claim my patterns or amigurumi designs as your own. Please do not sell your finished butterfly's made from this pattern without my written consent.

If you have a question sent a e-mail to: [annemieksd@home.nl](mailto:annemieksd@home.nl)  
Or leave a message in my guestbook on: [www.miekscreaties.nl](http://www.miekscreaties.nl)

[www.miekscreaties.nl](http://www.miekscreaties.nl)

