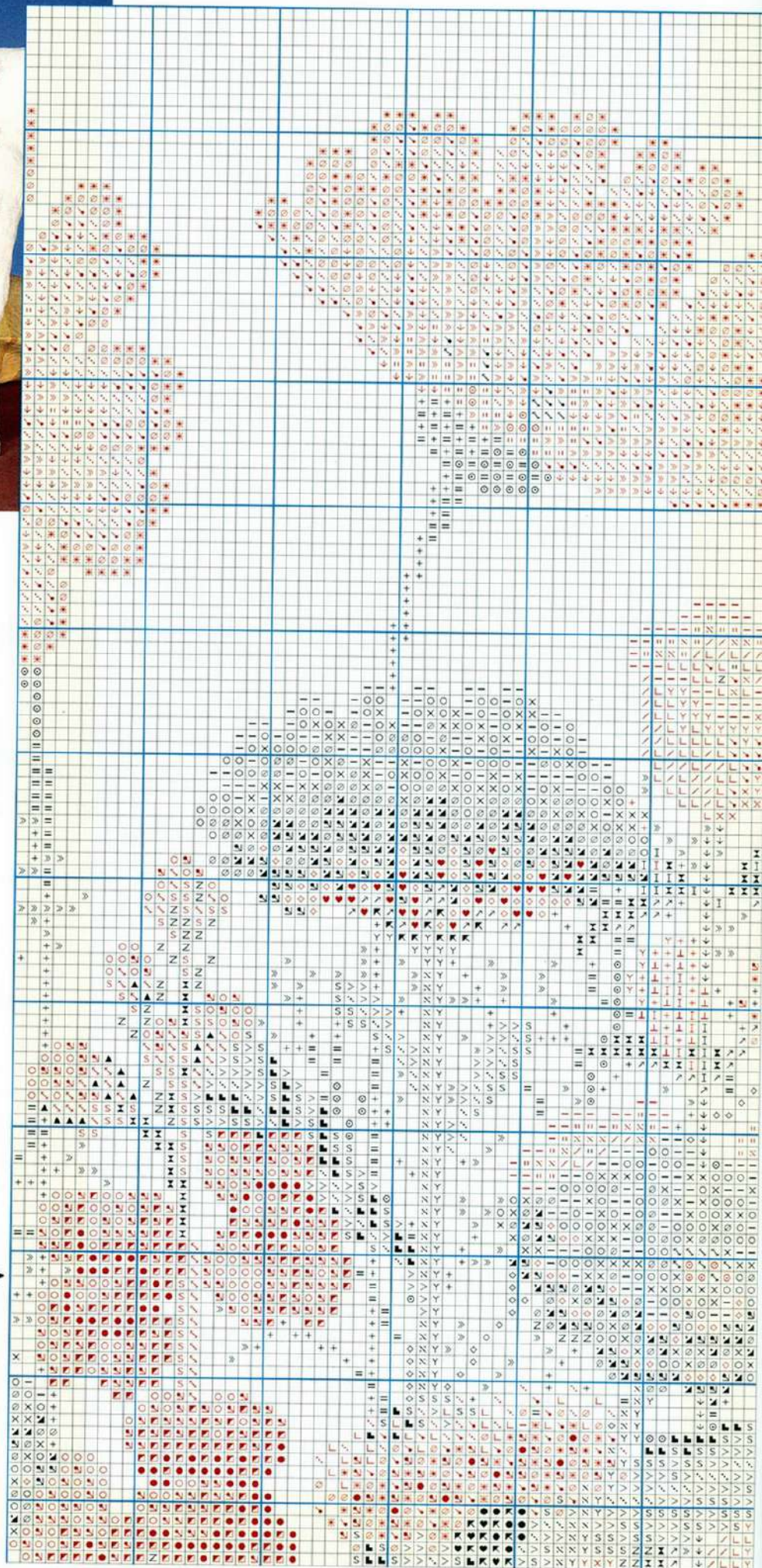


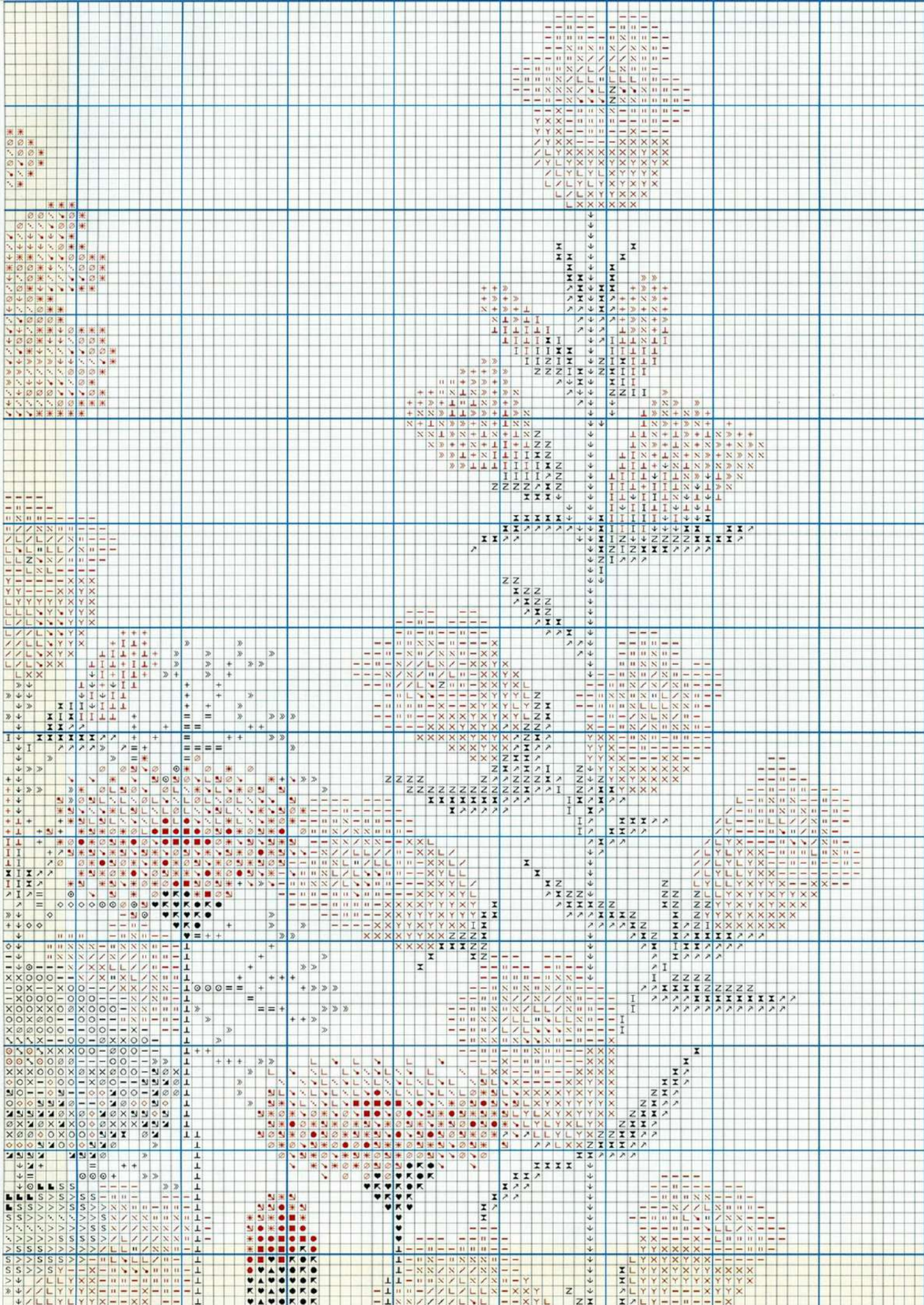
Upper Left Chart



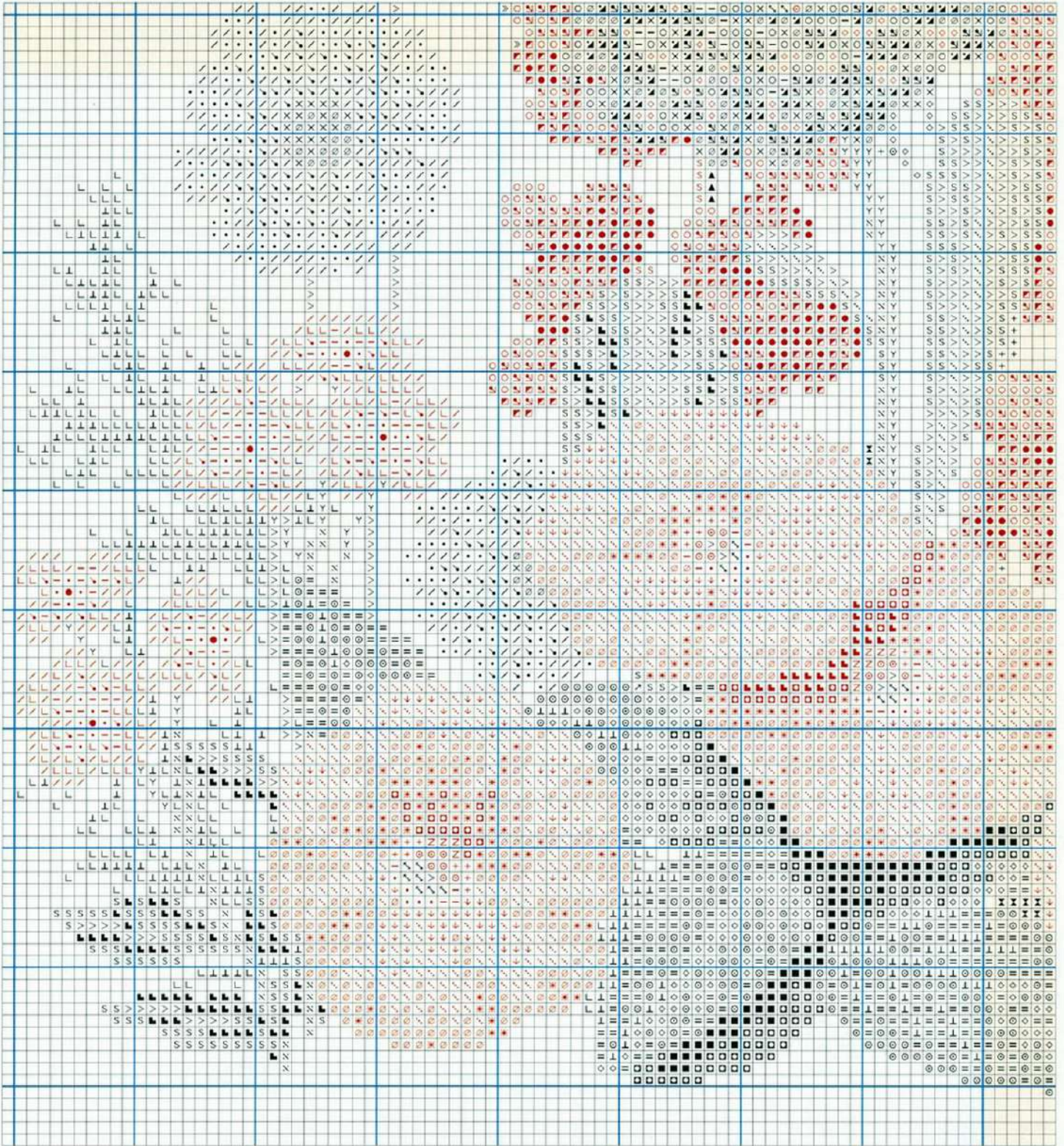
The size and shape of this design is perfect for a cushion. Simply make sure you have sufficient fabric to work the embroidery for a 15 inch (38 centimetres) square finished size – the size as given in the ‘You will need’ is perfect. Also allow a similar sized piece for the back. Follow our instructions on our Know How pages for making up the cushion.



Upper Centre Chart

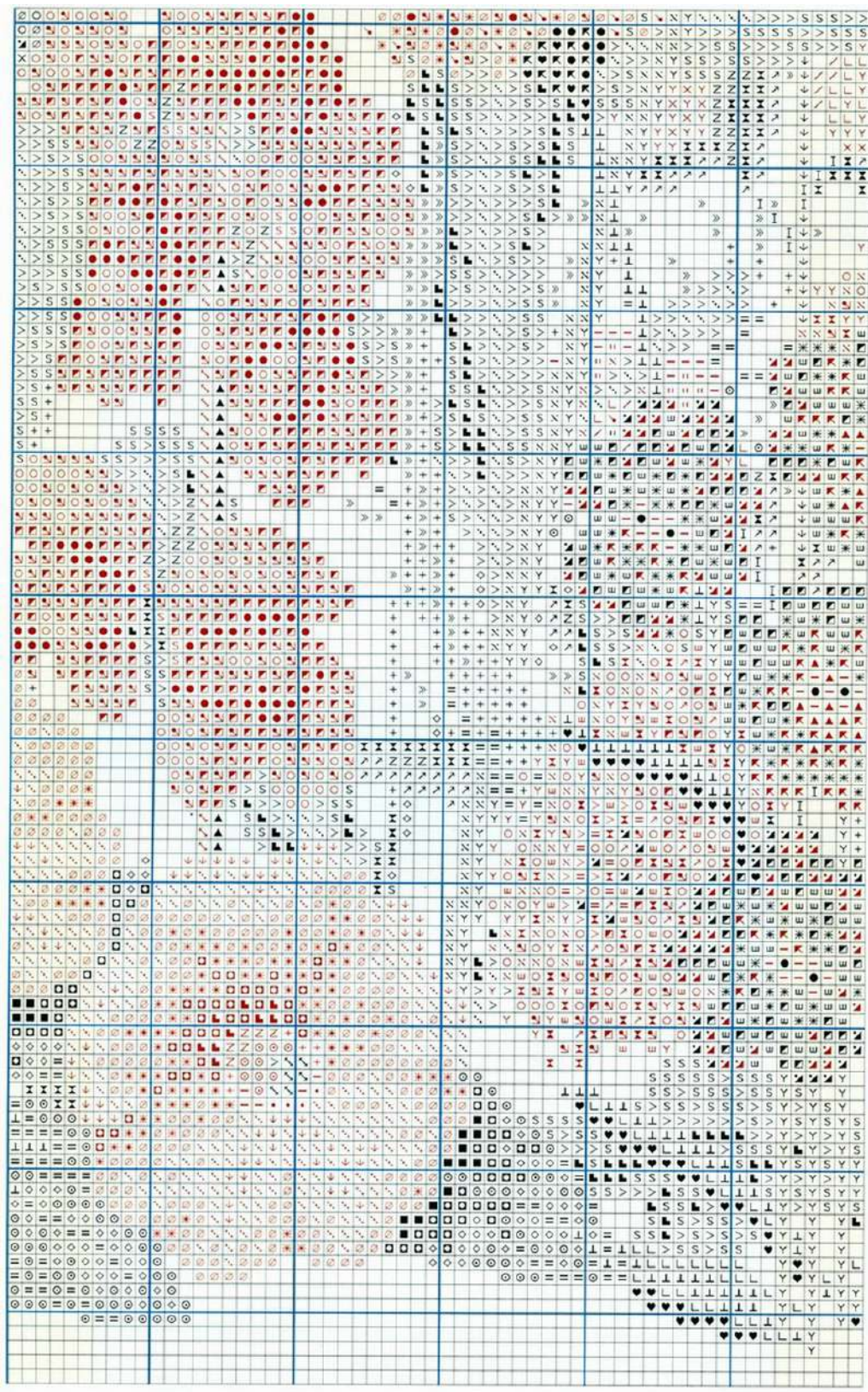


Upper Right Chart



Lower
Left Chart

	Anchor	DMC	Madeira		Anchor	DMC	Madeira		Anchor	DMC	Madeira
	Cross stitch in 2 strands				Cross stitch in 2 strands				Cross stitch in 2 strands		
•	288	445	0103	⊞	332	946	0207	⊥	261	368	1310
/	290	973	0104	▲	1086	3781	2004	↘	307	783	2514
○	297	444	0105	×	842	3013	1605	⊞	256	906	1411
⊞	316	740	0202	L	260	772	1604	■	258	905	1413
■	683	500	1314	∅	303	742	0114	+	214	966	1209
-	295	726	0109	*	334	606	0209	Z	265	471	1308
↓	378	407	1911	□	879	561	1705	↙	314	741	0201
↘	298	725	0107	∴	254	472	1414	◇	217	3815	1205
⊞	330	947	0205	>	255	907	1410	♥	262	3363	1602
●	380	838	2005	⊞	266	3347	1502	I	853	613	2110
"	886	3047	2205	∧	267	469	1503	=	215	320	1311
Y	843	3012	1606	⊞	263	3362	1601	⊙	216	367	1312
X	302	3855	2513	»	213	524	1309	•	1	85200	WHITE



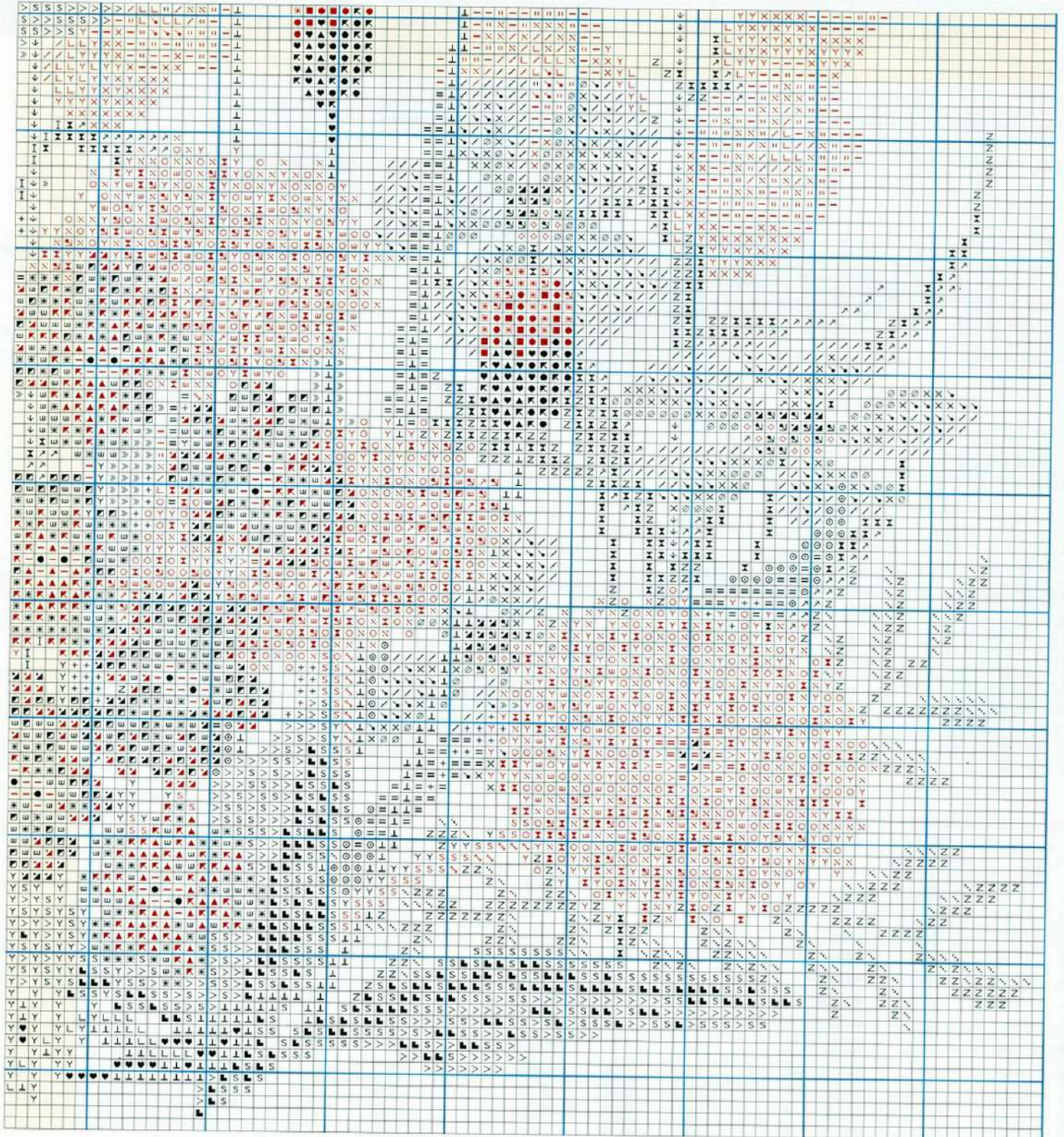
TIP When using evenweave fabric it is advisable to oversew the edges before beginning, either by hand or with a zigzag stitch on a sewing machine, to prevent fraying. Similarly when making a cushion using evenweave fabric, it is advisable to neaten any raw edges after trimming to prevent them from fraying.

Lower Centre Chart

Anchor DMC Madeira			Anchor DMC Madeira			Anchor DMC Madeira					
Cross stitch in 2 strands			Cross stitch in 2 strands			Cross stitch in 2 strands					
∕	24	3326	0503	▲	47	321	0510	∖	379	3772	2601
○	52	957	2707	×	23	963	0502	S	855	371	2111
⊕	62	603	0701	L	50	3716	0612	■	1029	915	0705
■	72	814	2607	⊗	86	3608	0709	+	968	224	0808
-	271	819	0501	*	87	3607	0708	Z	969	152	0809
+	1094	605	0613	□	89	917	0706	⊠	329	3340	0301
∨	55	604	0614	∴	85	3609	0710	◇	925	970	0204
▣	63	3805	0702	>	8	353	0304	♥	326	720	0309
●	65	777	0603	×	31	894	0408	I	831	3782	2109
=	48	818	0608	∧	29	3801	2708	=	323	722	0307
Y	74	3354	0606	⊠	46	666	0210	○	308	782	2212
X	75	962	0504	»	73	3689	0607				
E	35	892	0410	⊥	376	950	1910				



Whether you decide to use the design for a cushion or a picture, it will certainly bring a blaze of summer colours into your home.



Lower Right Chart