








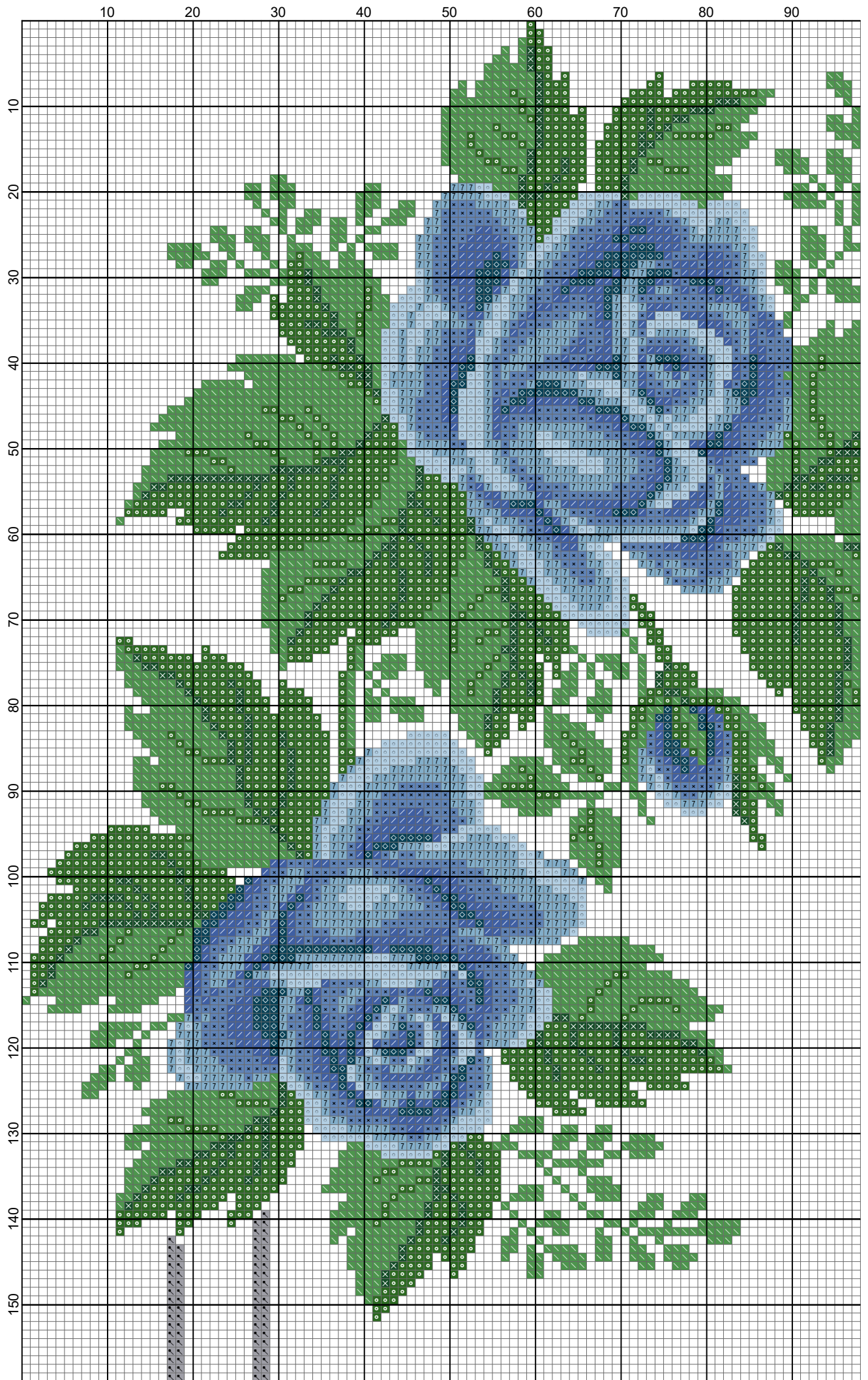
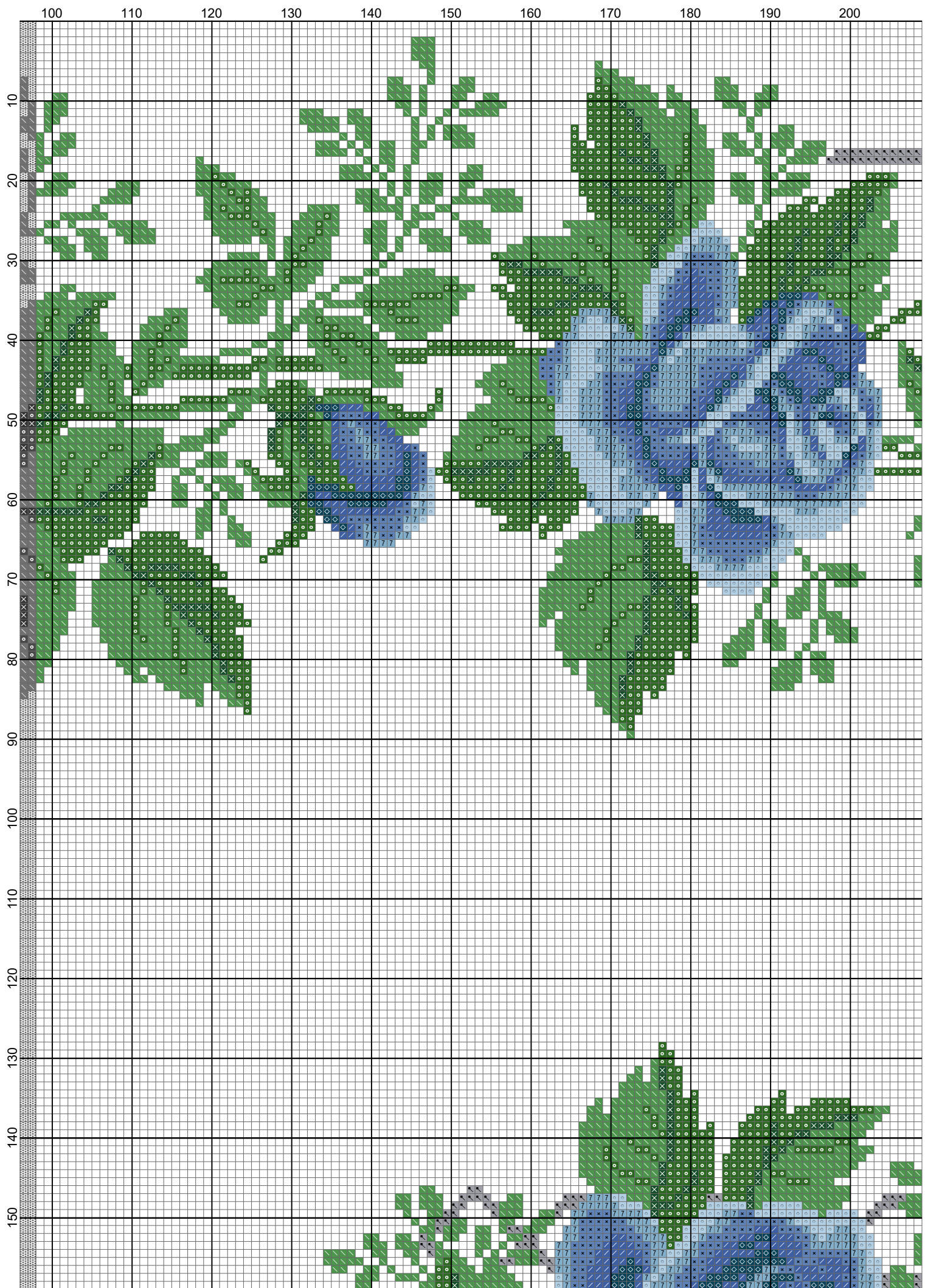


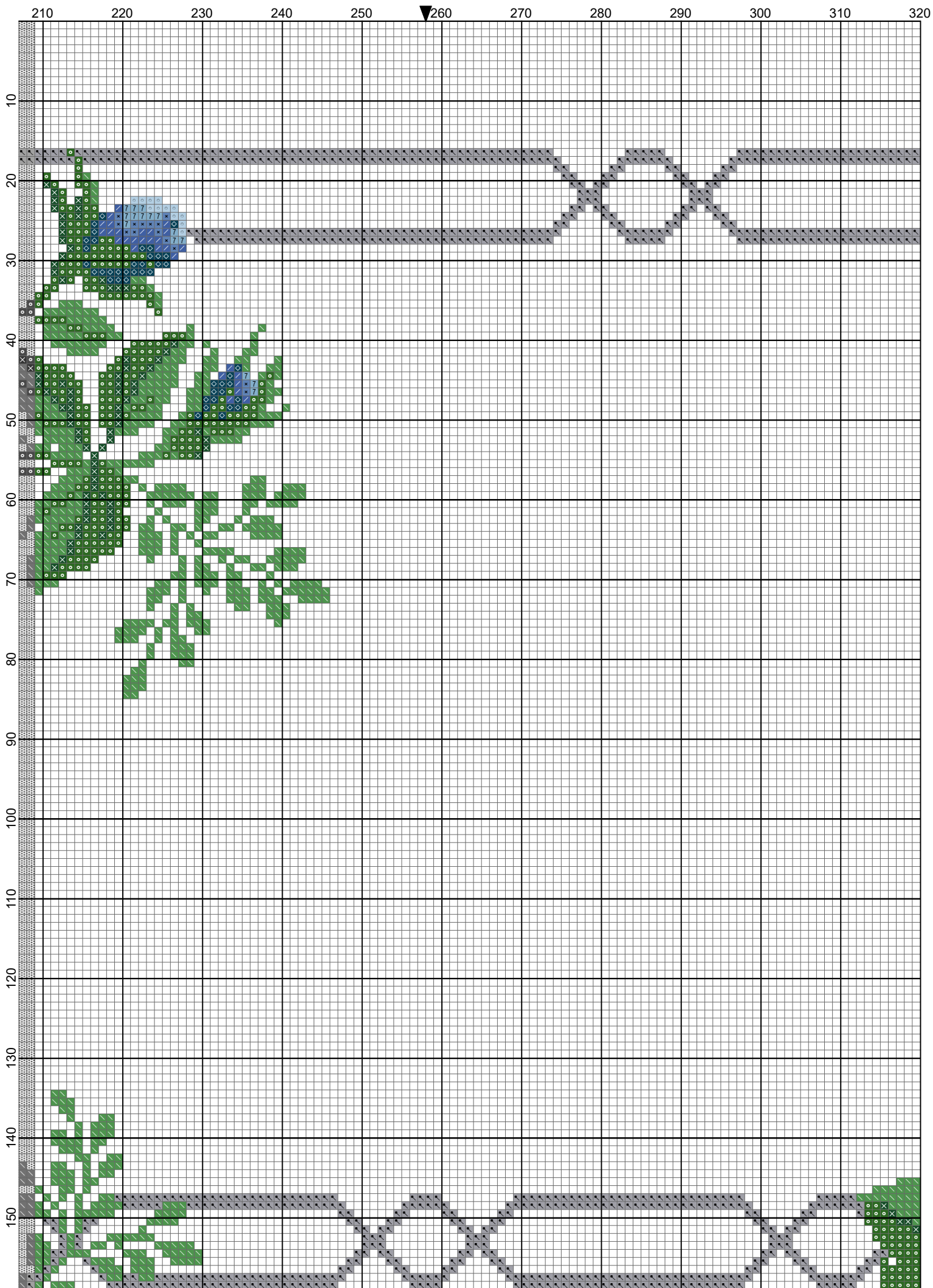
Tovaglia rose Blu quadrata- modifiche (Natalia) by

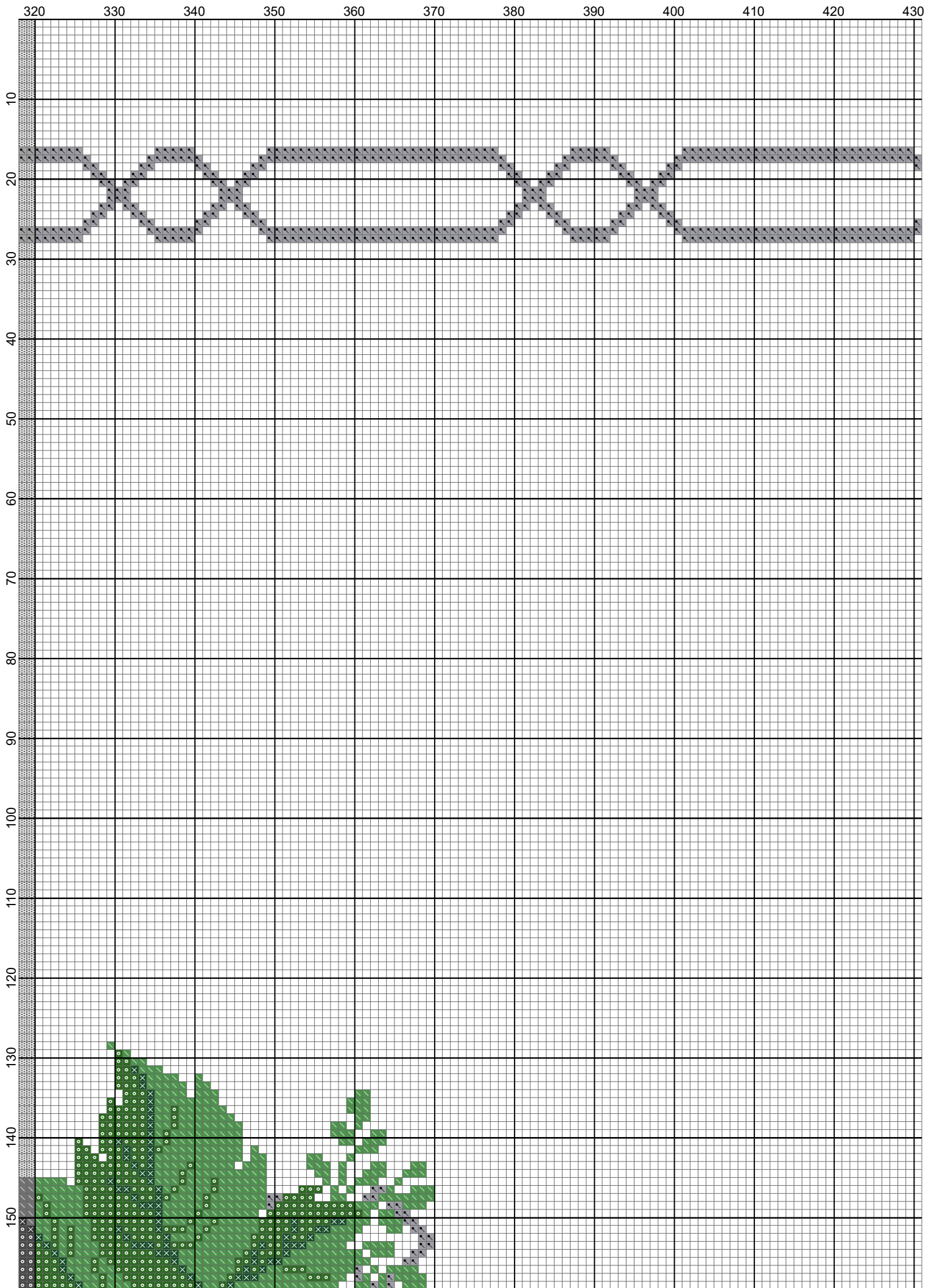
Legend:

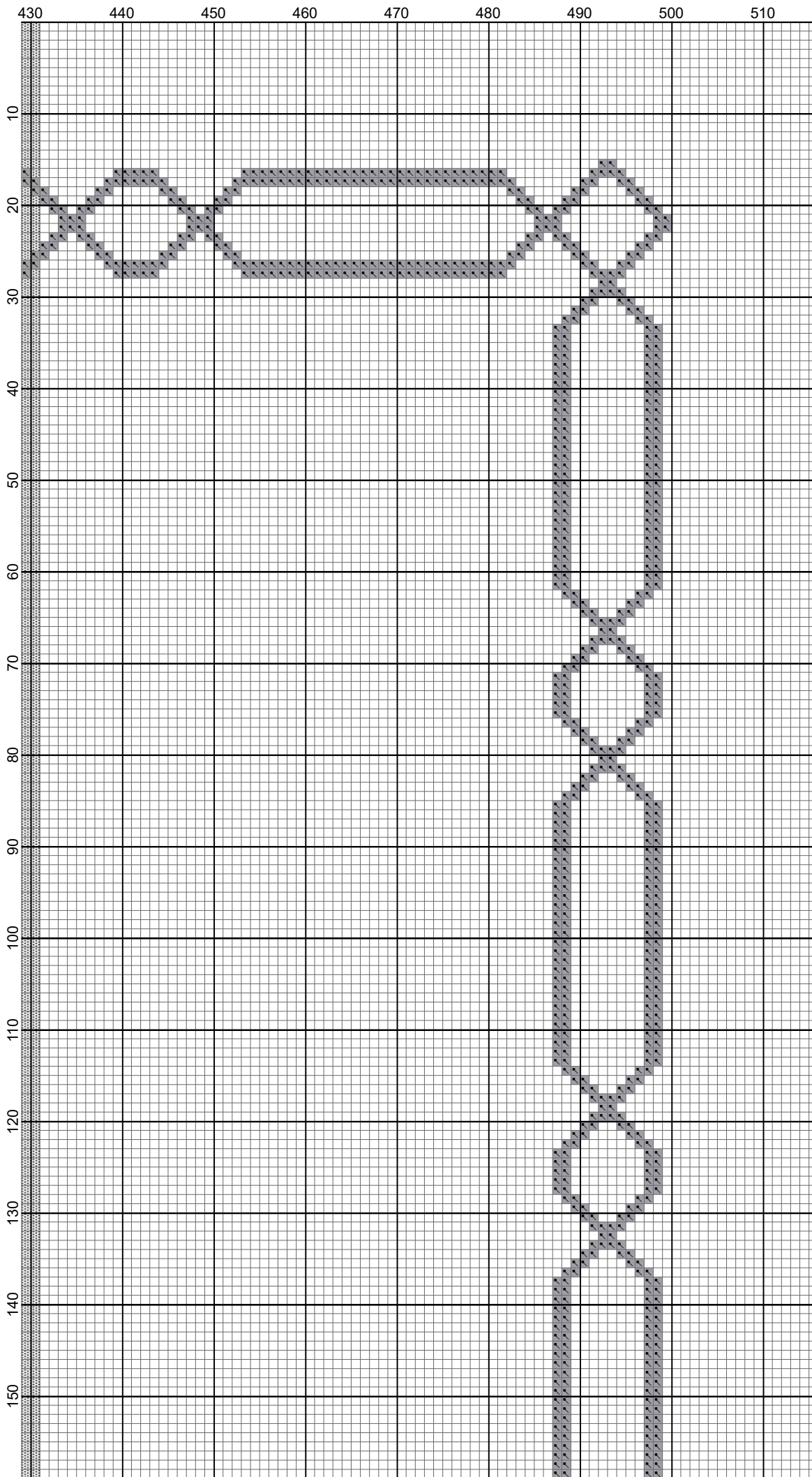
-  DMC-986
-  DMC-890
-  DMC-367
-  DMC-800
-  DMC-799
-  DMC-798
-  DMC-813
-  DMC-311
-  DMC-318

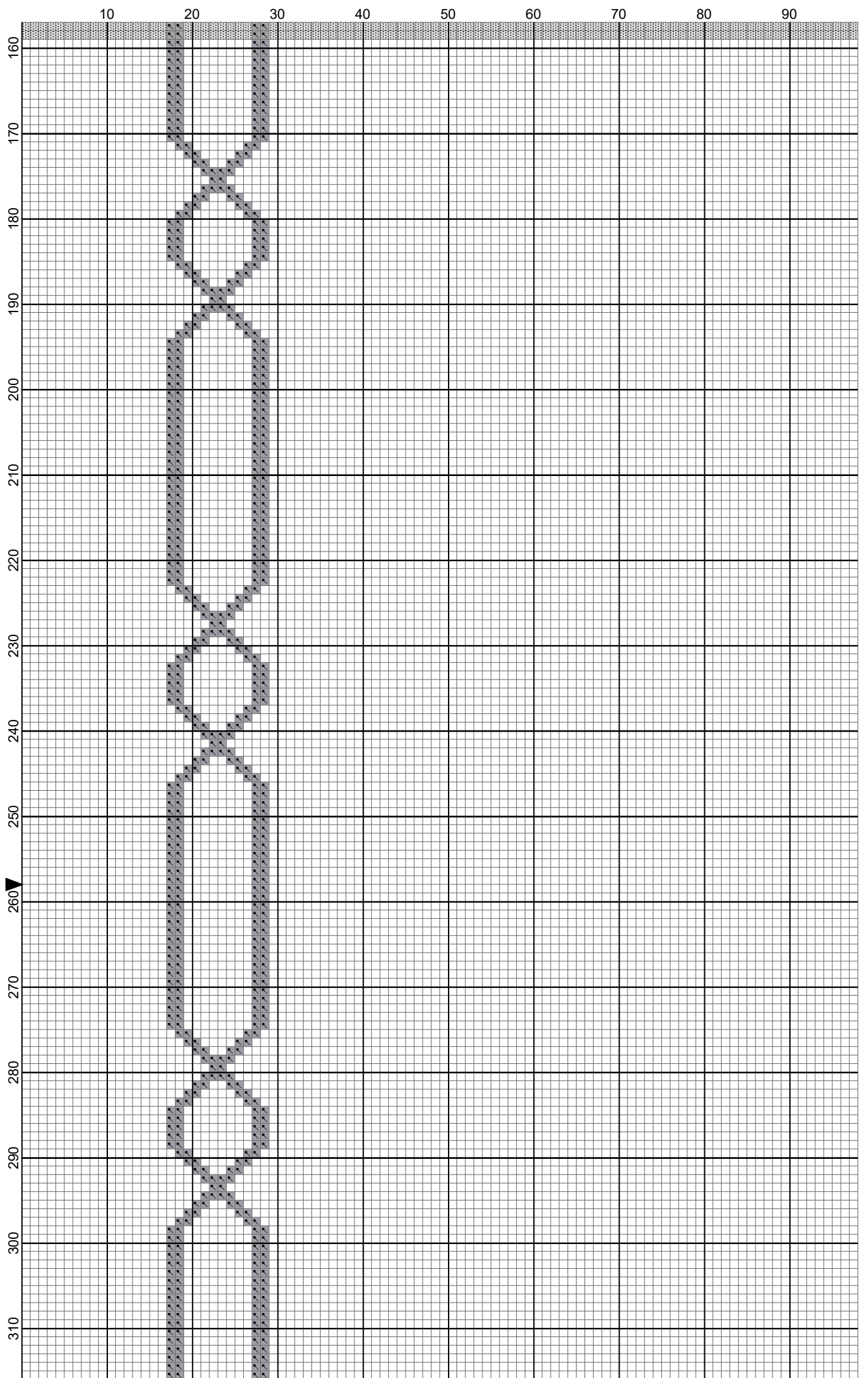


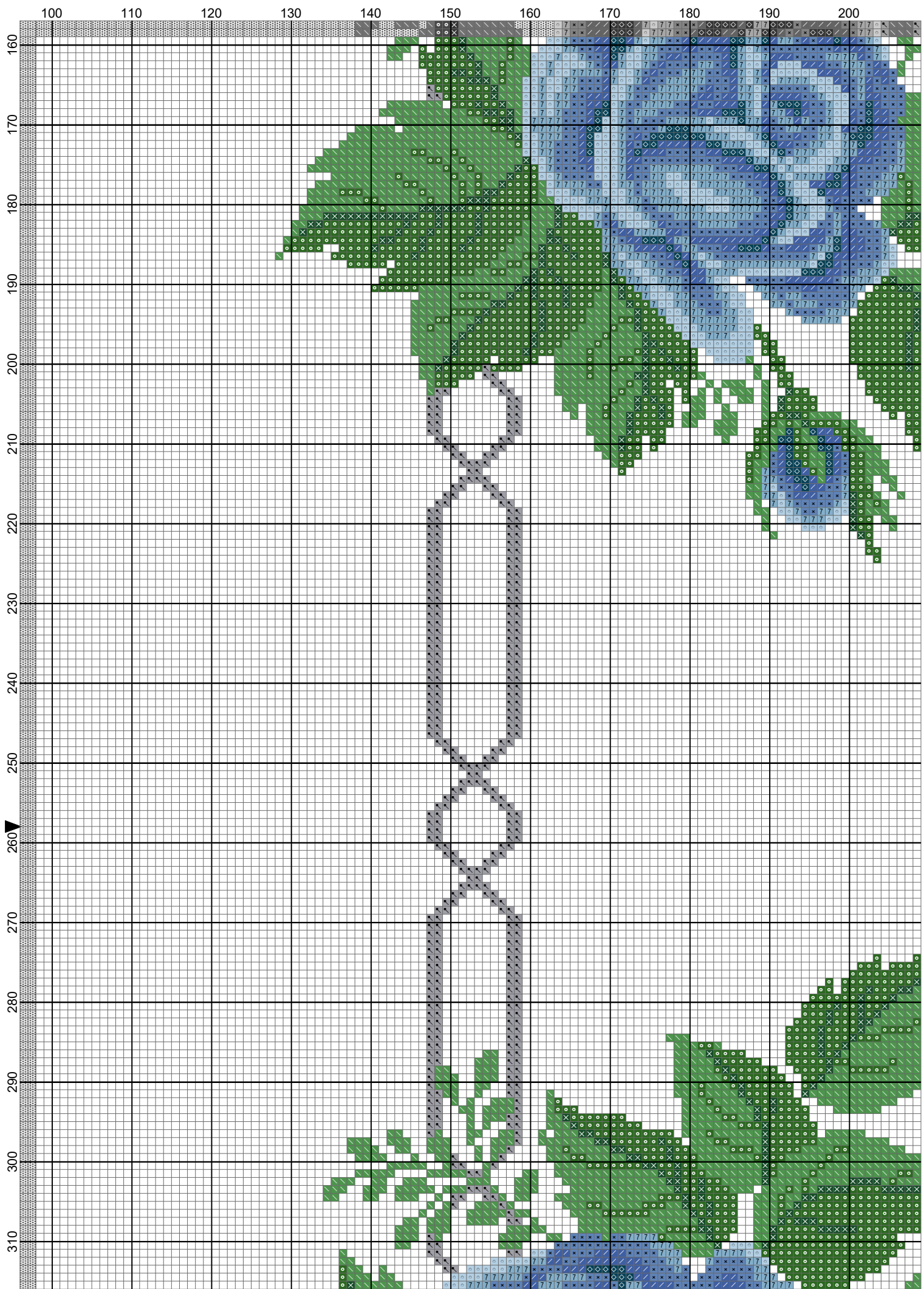


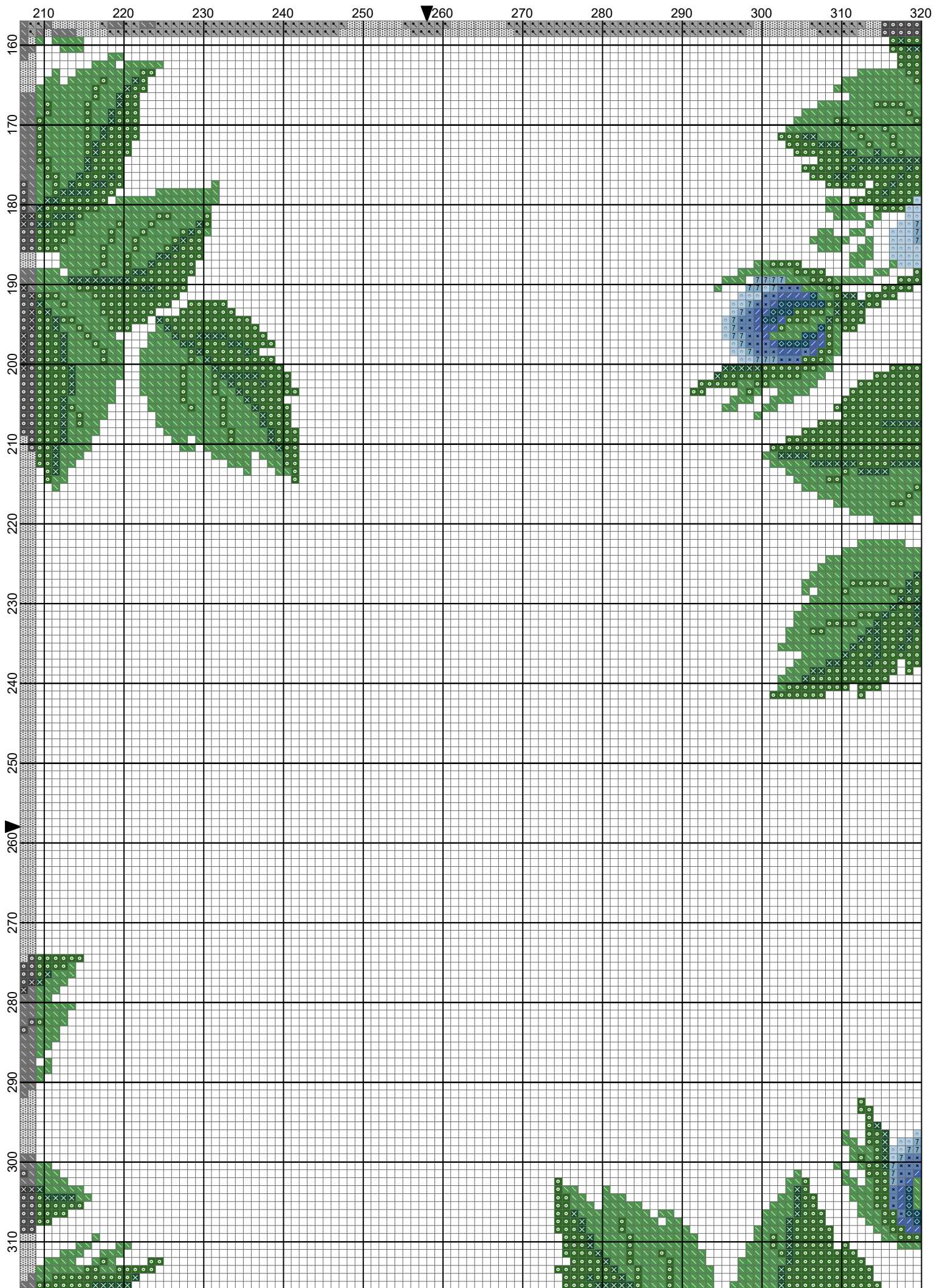


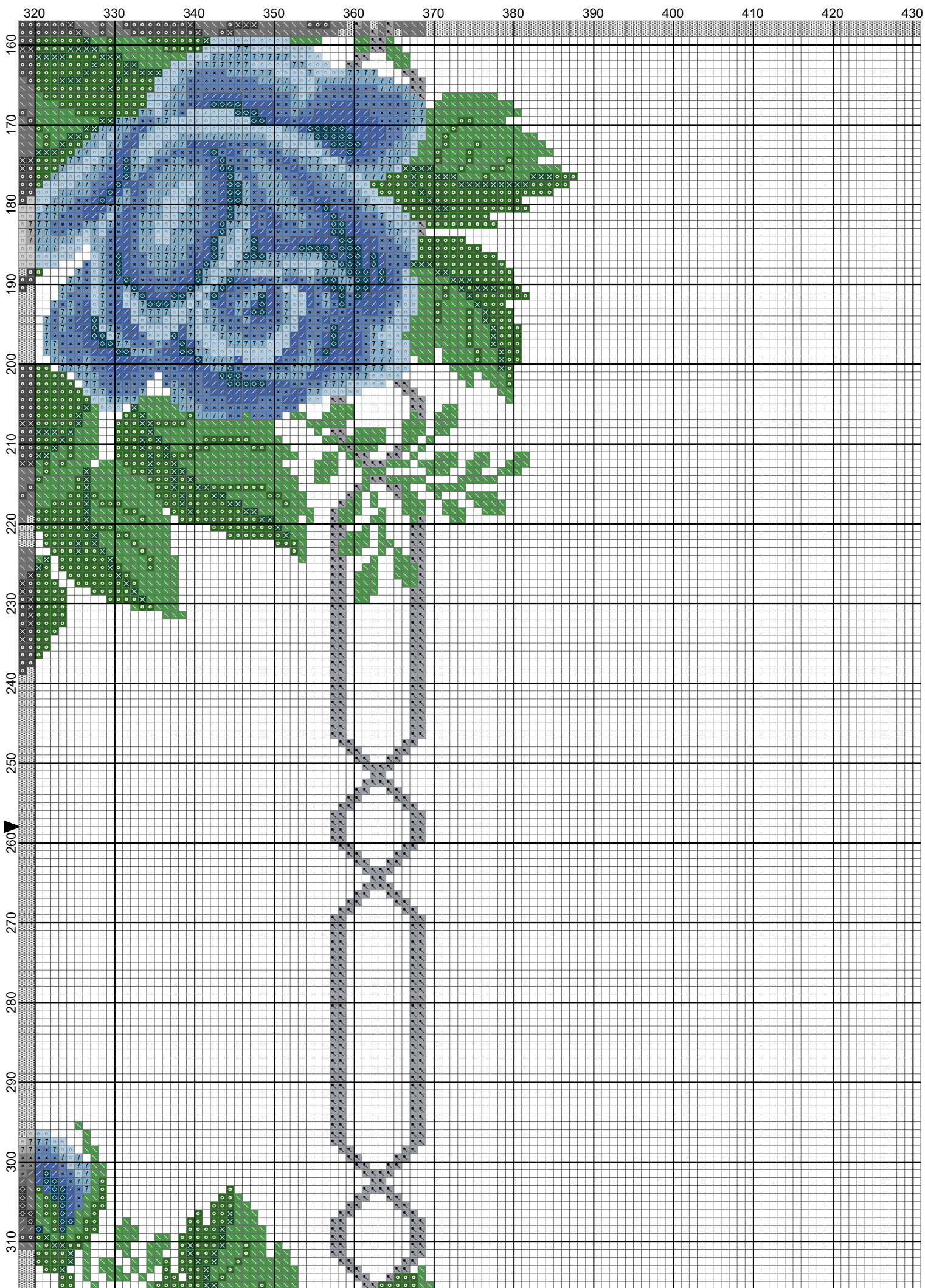


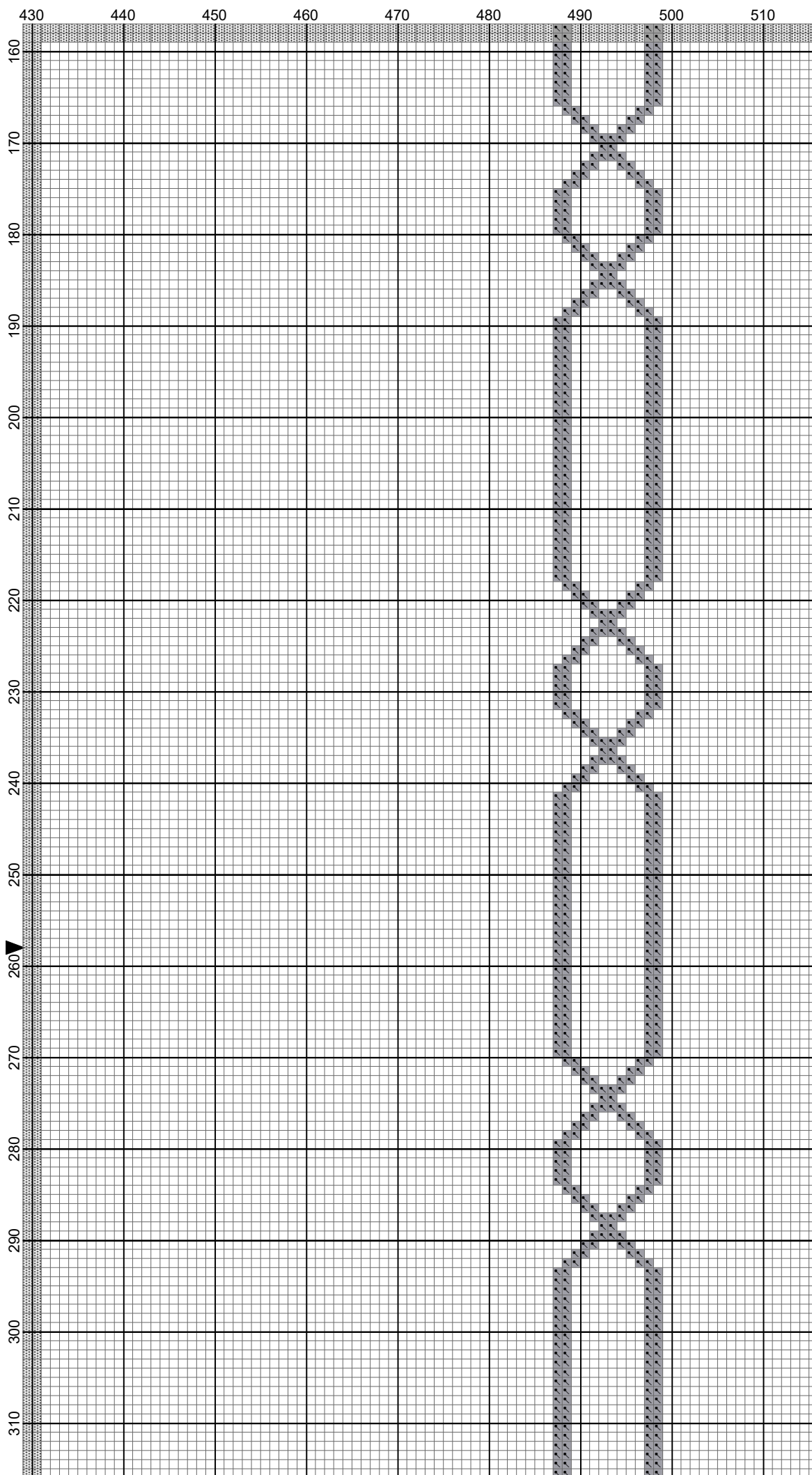


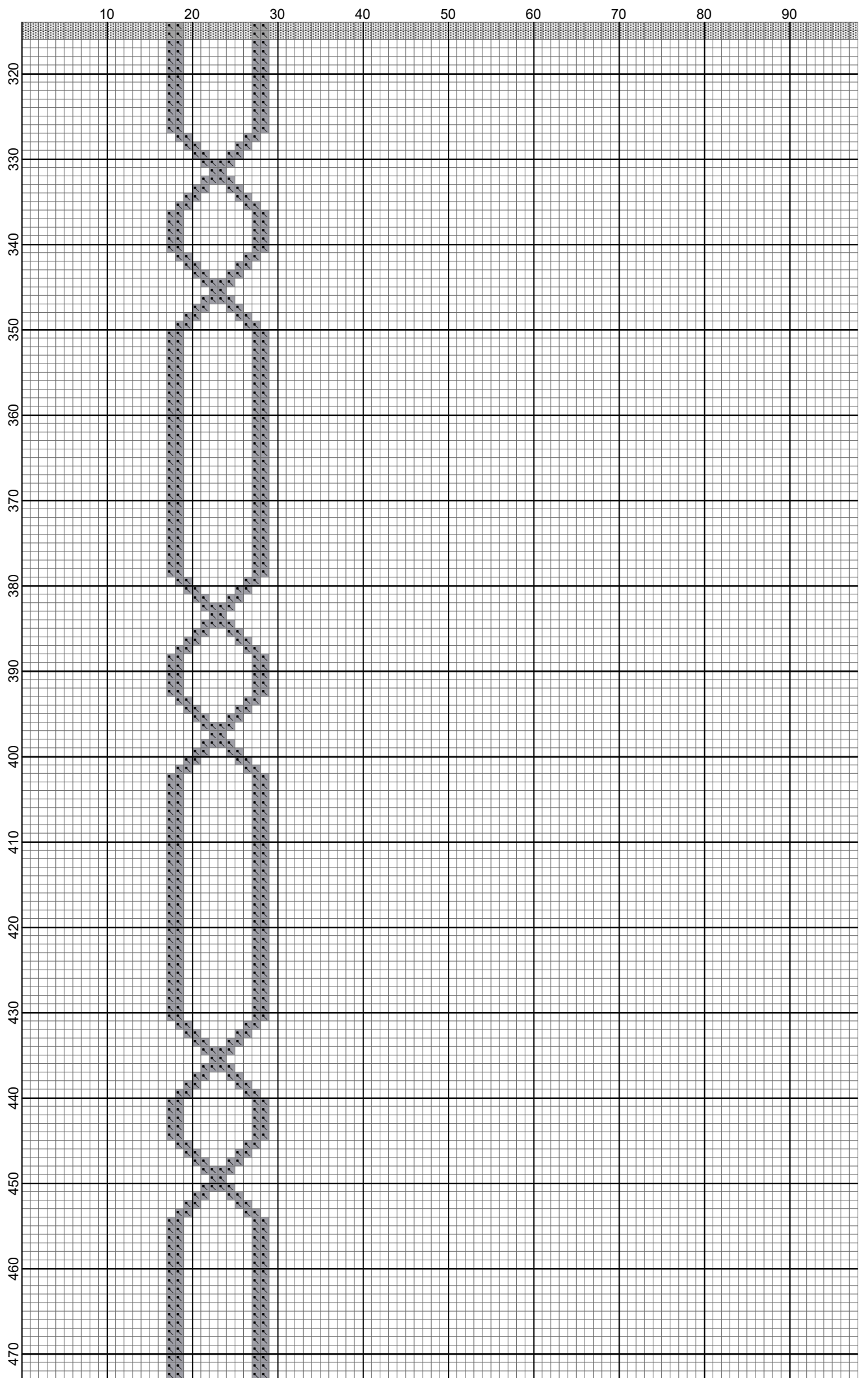


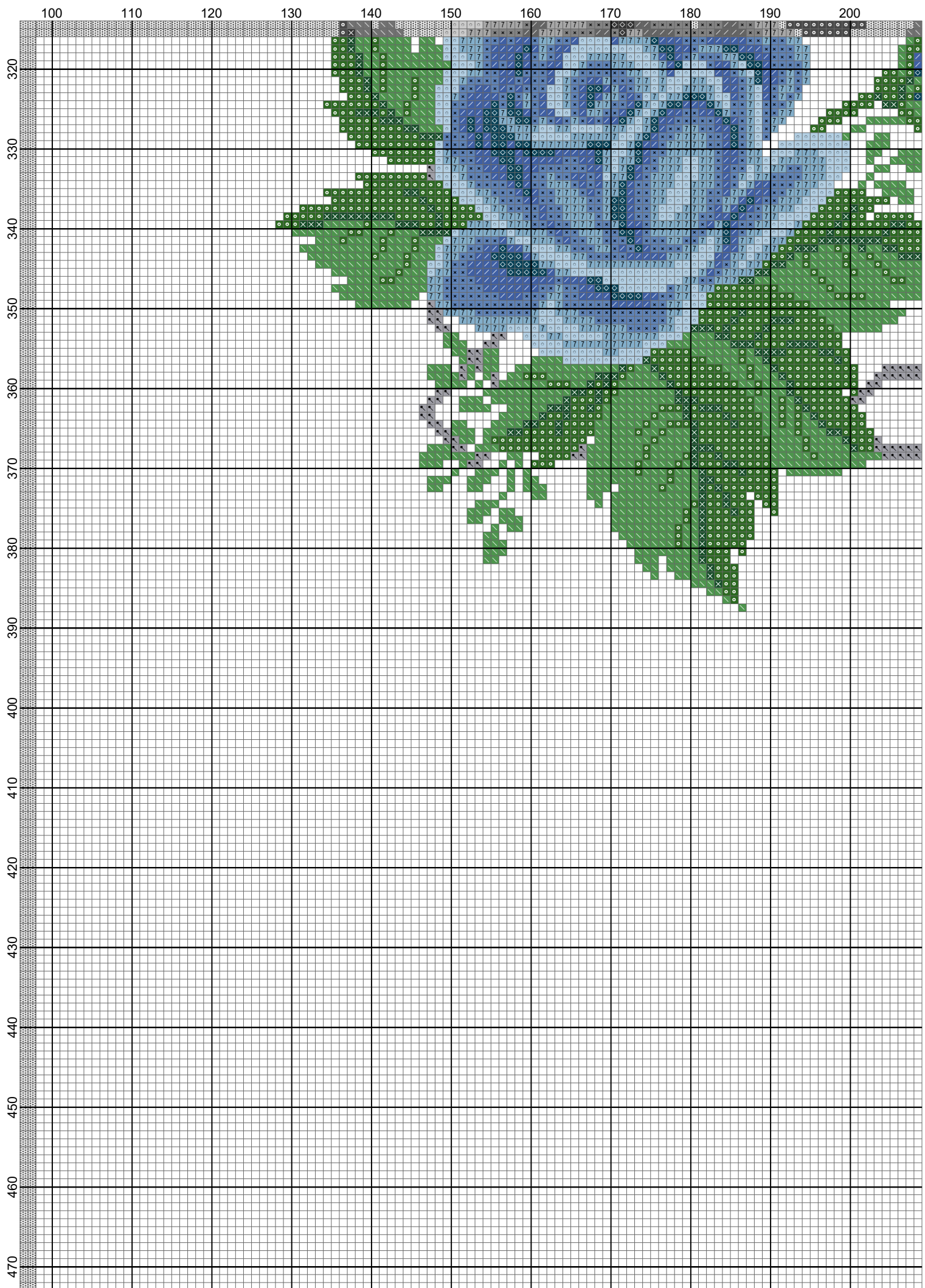


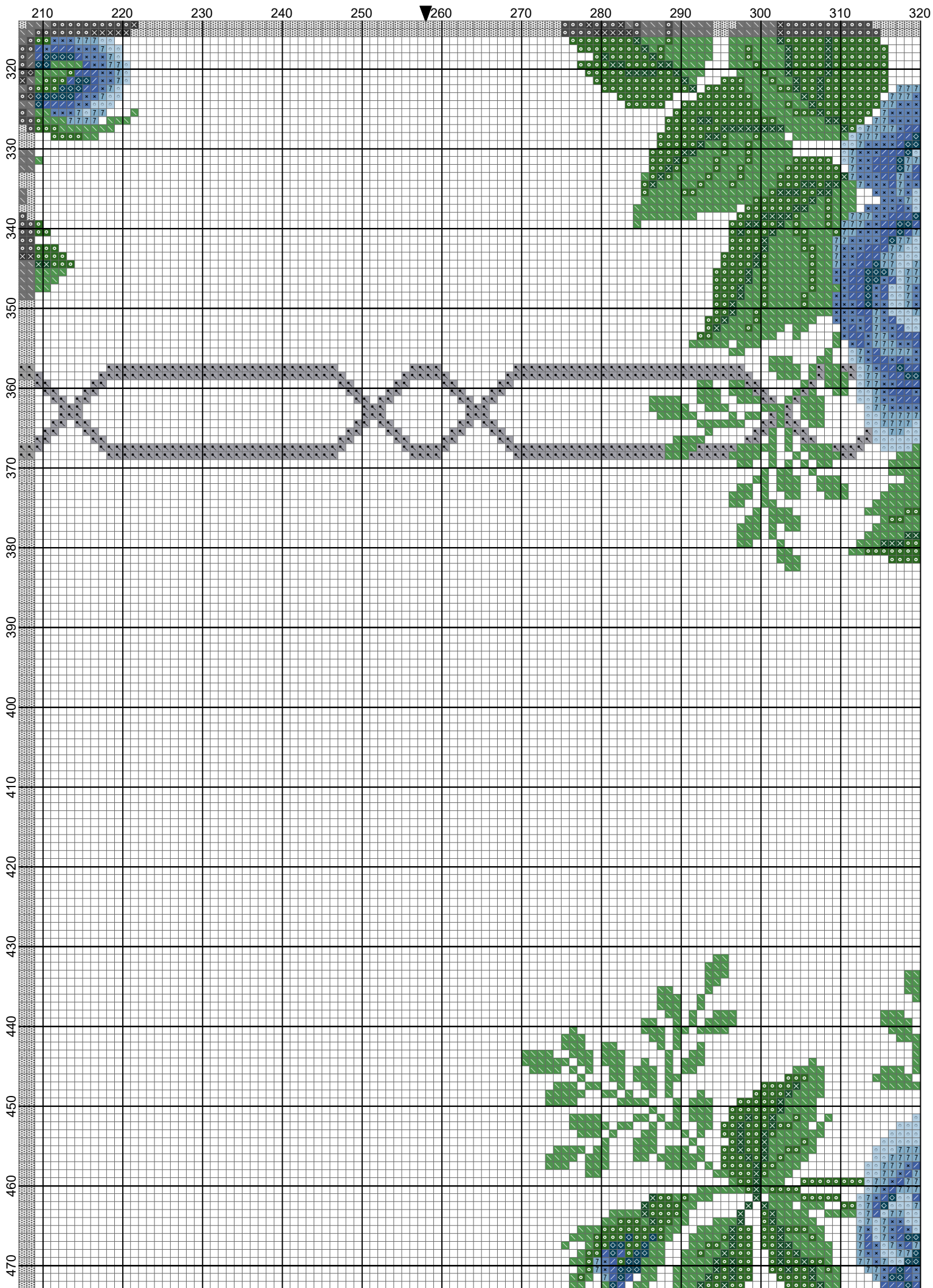




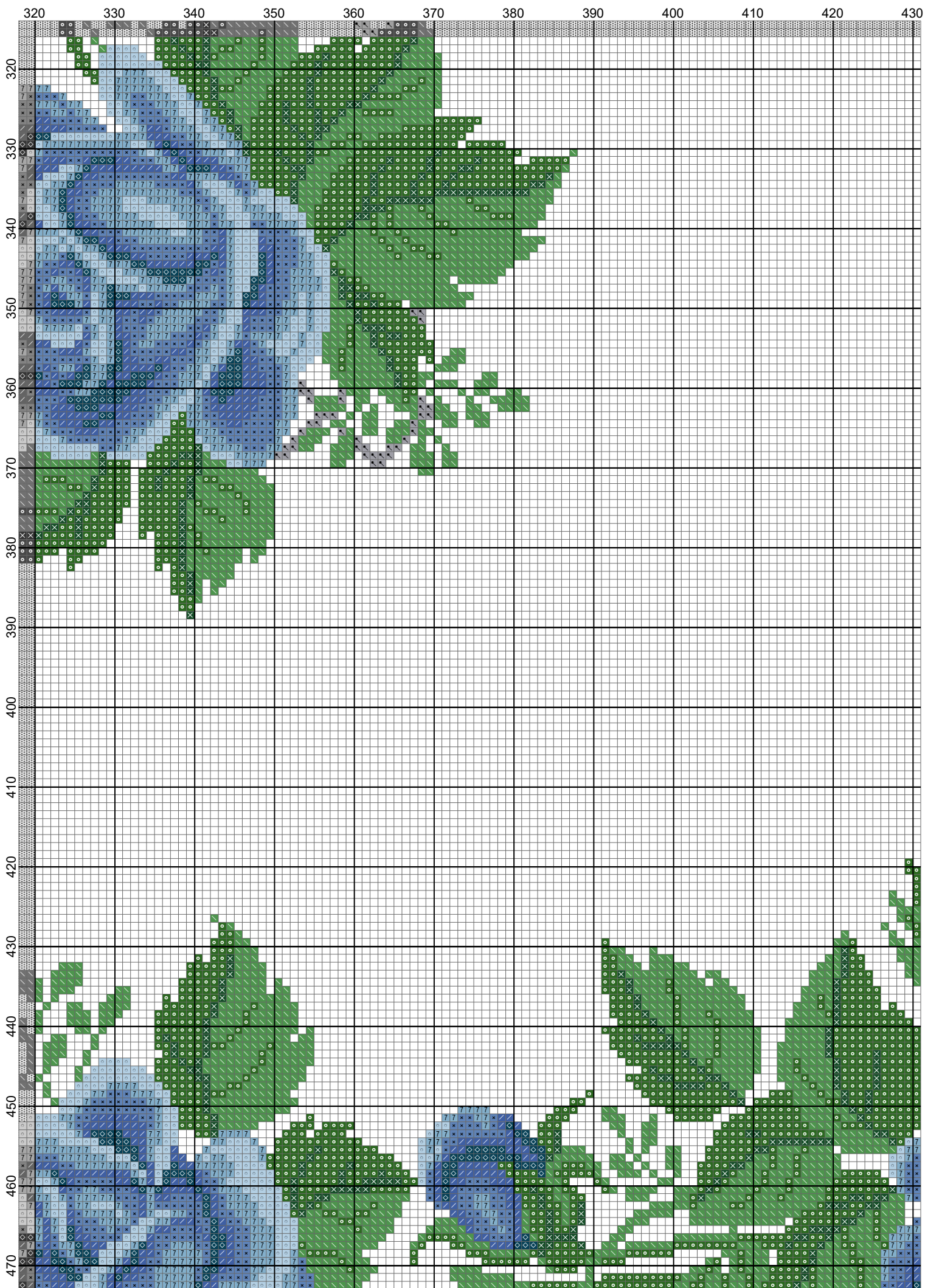


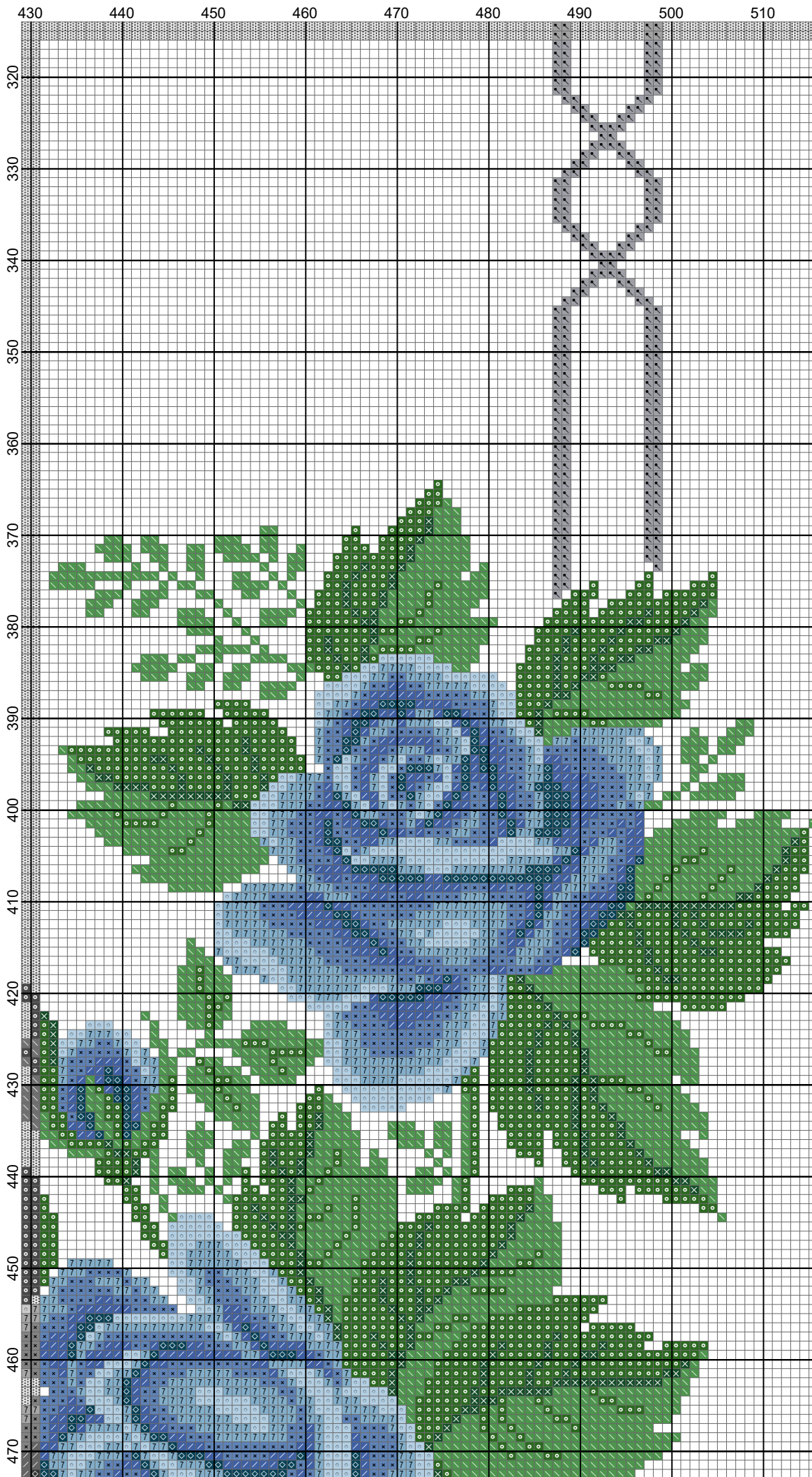


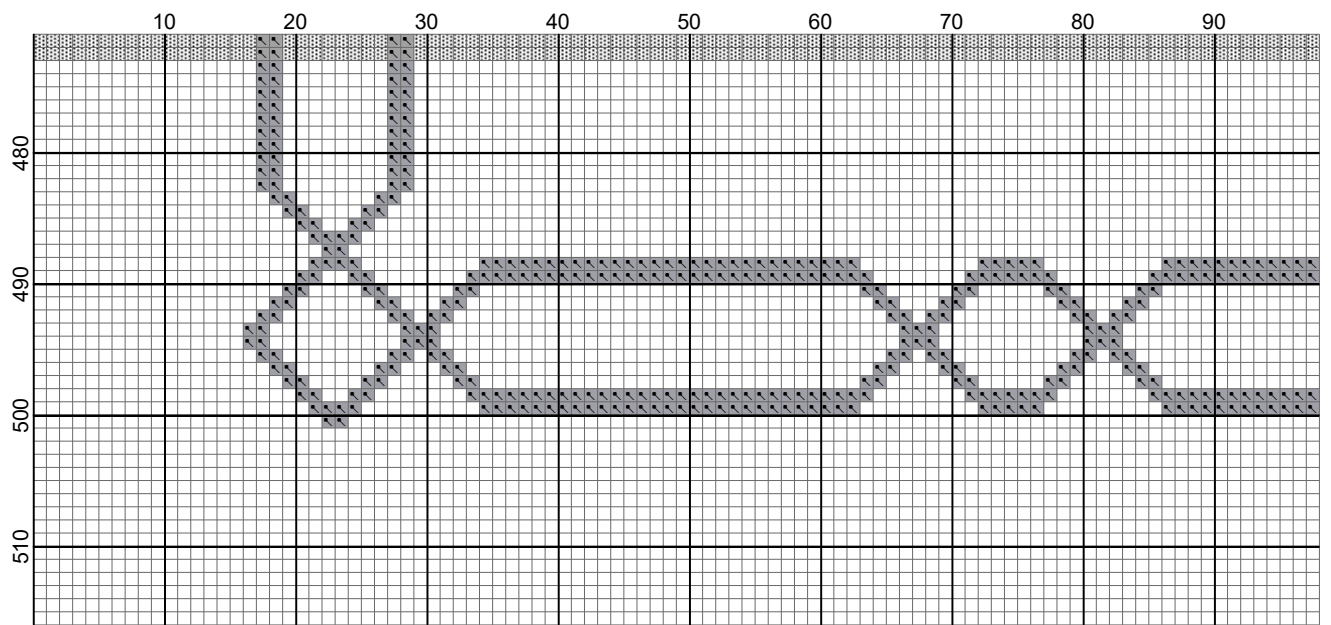




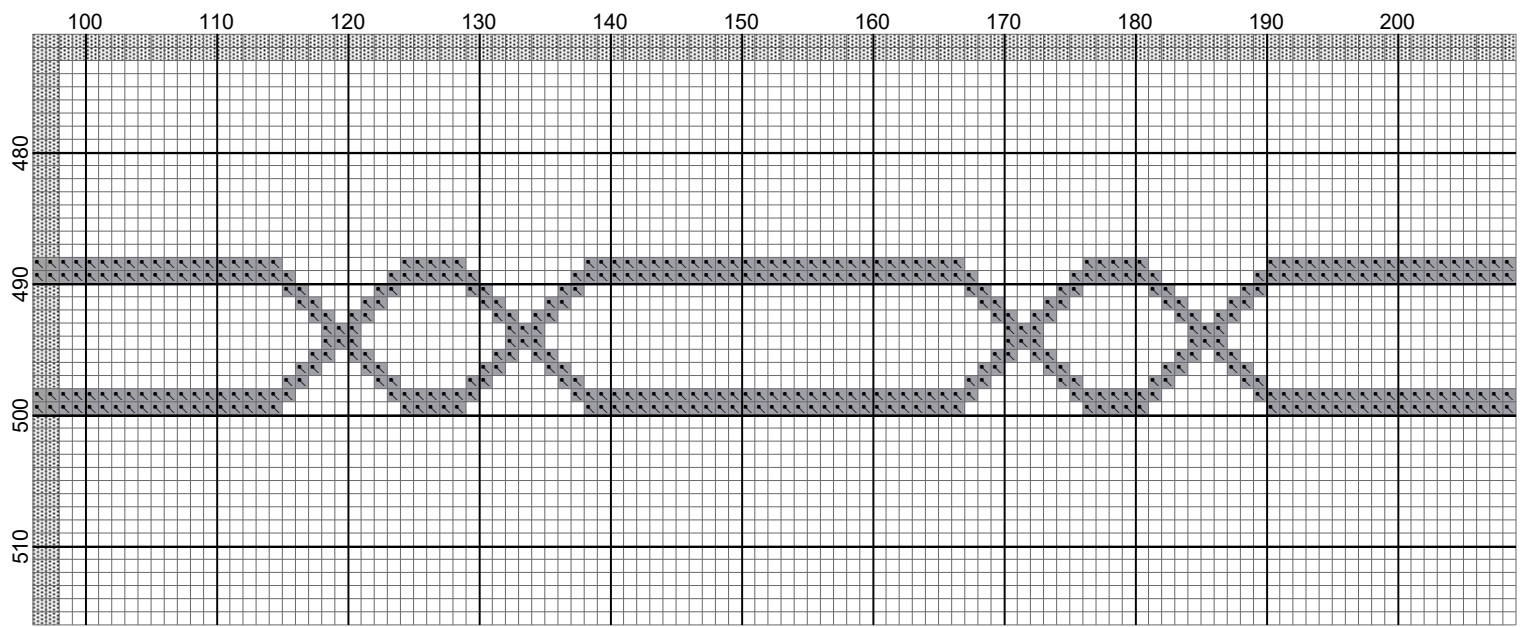
Tovaglia rose Blu quadrata- modifich (Natalia) by

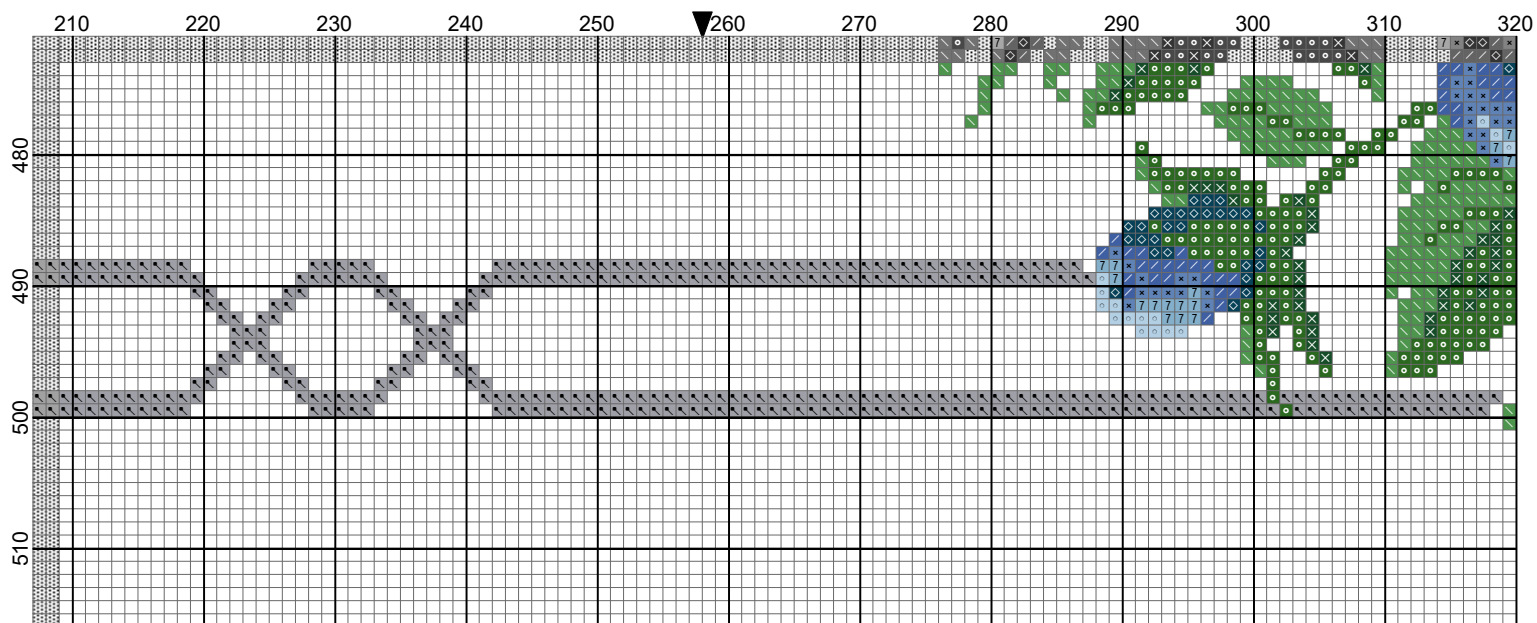


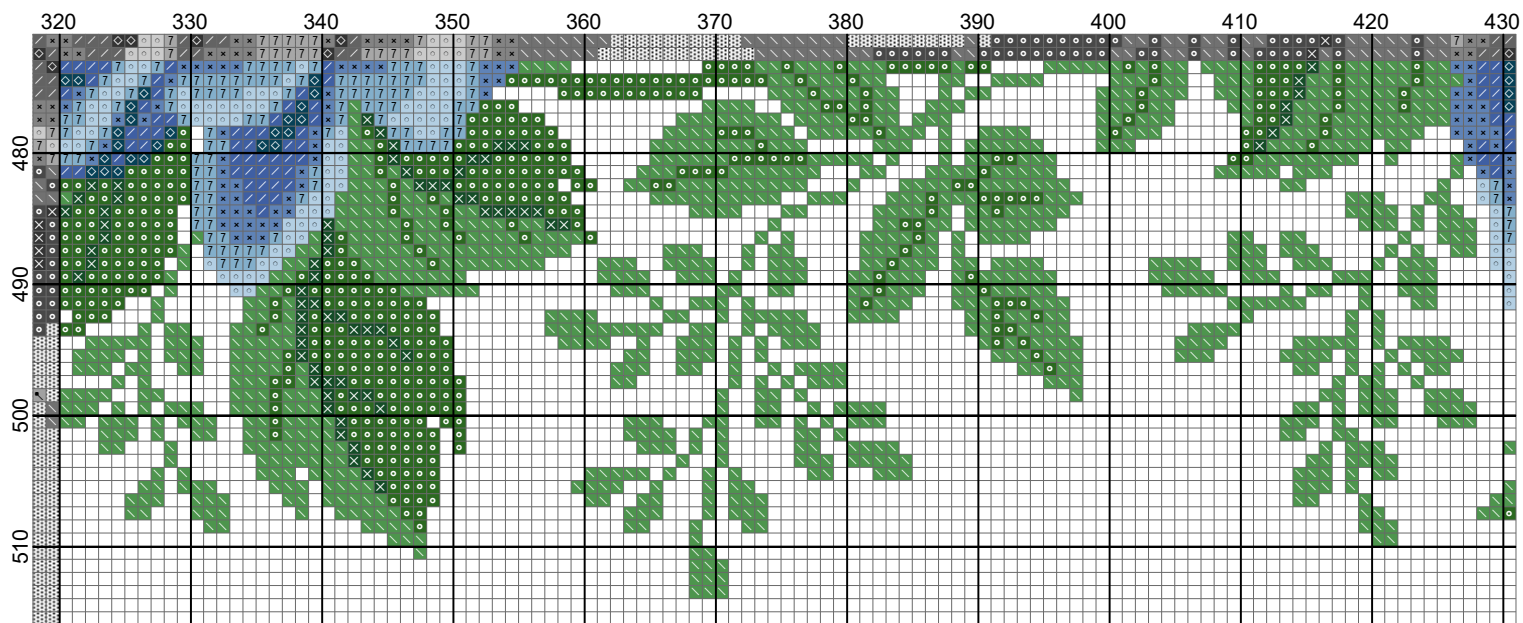




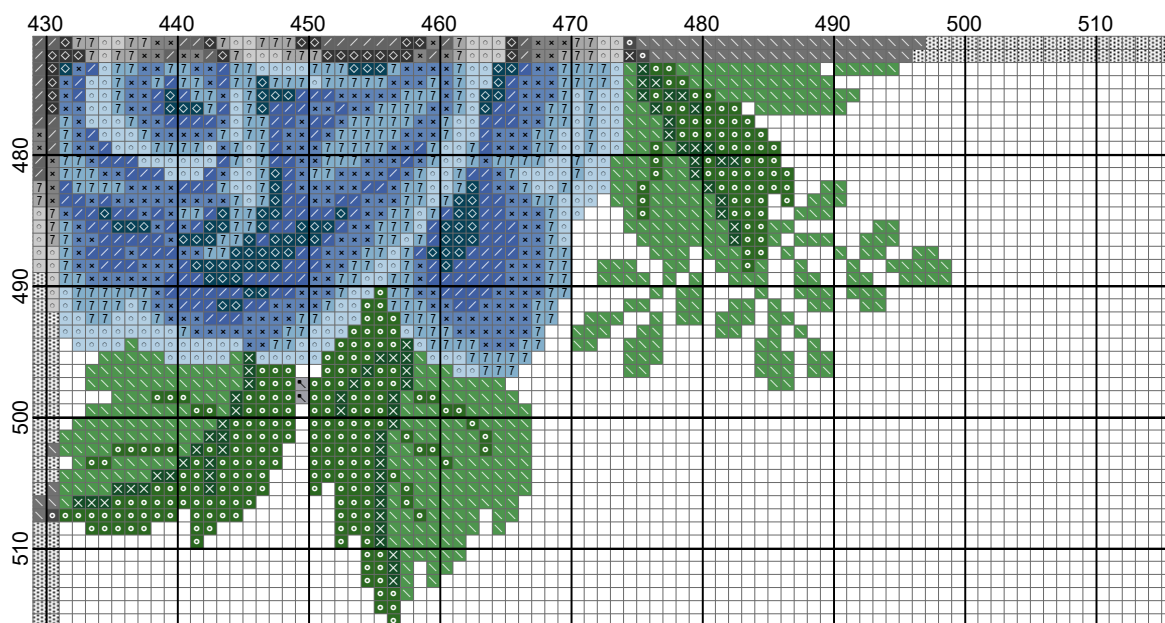
Tovaglia rose Blu quadrata- modifiche (Natalia) by







Tovaglia rose Blu quadrata- modifiche (Natalia) by



Tovaglia rose Blu quadrata- modifiche (Natalia)

Grid Size: 516W x 516H

Design Area: 36,86" x 36,86" (516 x 516 stitches)

Legend:

		[2]	DMC-986	ANC-246	Forest Green-VY DK	(12689 stitches, 5,1 skeins)
		[2]	DMC-890	ANC-862	Pistachio Green-UL DK	(2767 stitches, 1,1 skeins)
		[2]	DMC-367	ANC-217	Pistachio Green-DK	(16870 stitches, 6,8 skeins)
		[2]	DMC-800	ANC-159	delft blue - pl	(3632 stitches, 1,5 skeins)
		[2]	DMC-799	ANC-145	delft blue - md	(4328 stitches, 1,7 skeins)
		[2]	DMC-798	ANC-147	delft blue - dk	(3224 stitches, 1,3 skeins)
		[2]	DMC-813	ANC-140	blue - lt	(5054 stitches, 2,0 skeins)
		[2]	DMC-311	ANC-164	navy blue - md	(1608 stitches, 0,7 skeins)
		[2]	DMC-318	ANC-399	steel gray - lt	(6761 stitches, 2,7 skeins)