



*Thank you for purchasing this design from Papillon Creations. I hope you get as much pleasure from stitching it as we had in creating it.*

*In this age of information technology, it is very easy to make many copies of a document such as this one and in doing so, break copyright laws. I like to think of the stitching community as a peaceful haven where honesty and family values are cherished but, even so, I feel I should point out the following:*

*This design, plus all the charts, photos, stitch diagrams, written instructions and illustrations that go with it, are copyright-protected material. None the files or the material in them may be kitted, sold, transmitted electronically, copied or put on any web page other than [www.papillon-creations.com](http://www.papillon-creations.com). As the purchaser of this design please feel free to print yourself one copy of it for your archive, plus another copy to work from.*

*If you have any questions about the copyright or uses of these files please contact me at [sales@papillon-creations.com](mailto:sales@papillon-creations.com) and I will try to answer your query. Thank you for respecting the copyrights of these designs.*

This design is a celebration of the wonderful antique alphabets which were published in Europe from the 1830s onwards, and were destined to decorate household linens. Between the letters run many bands and motifs, which would also have been used for the same purpose.

The design is charted for two colours of your choice, and can be worked entirely in cross stitch. However, for those of you who like a challenge, instructions are given for working the bands and motifs in either speciality stitches or cutwork. Clear diagrams and instructions are given for all techniques used. If you have never worked these techniques before, several small “bonus” designs are included which you can use to try out the techniques before working them on the sampler.

**Design size—Sampler: 239 x 198 stitches**

**Boxtop: 92 x 82**

**Bookmarks: Max. = 22 x 75**

**Finished stitched size—Sampler:**

14/28 Count fabric: 43 x 35.5 cm (17 x 14 inches)

16/32 Count fabric: 38 x 31.7 cm (15 x 12.5 inches)

*Add 20cm (8 inches) to above measurements to allow for framing.*

**Boxtop / small sampler:**

14/28 count fabric: 16.5 x 14.7 (6.5 x 5.8 inches)

16/32 Count fabric: 14.6 x 12.7 (5.75 x 5 inches)



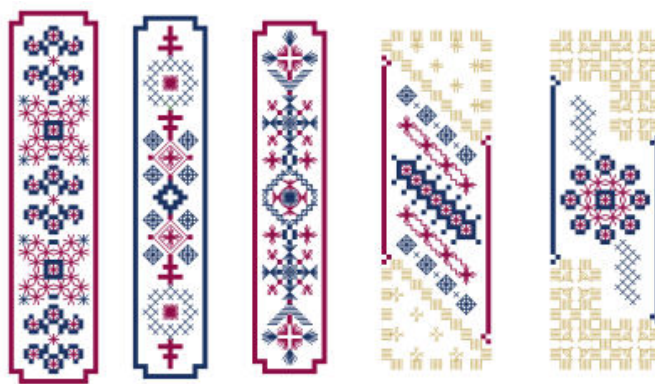
*Sampler with speciality stitches and cutwork*



*Sampler worked entirely in cross stitch*



*Bonus Boxtop or small sampler*

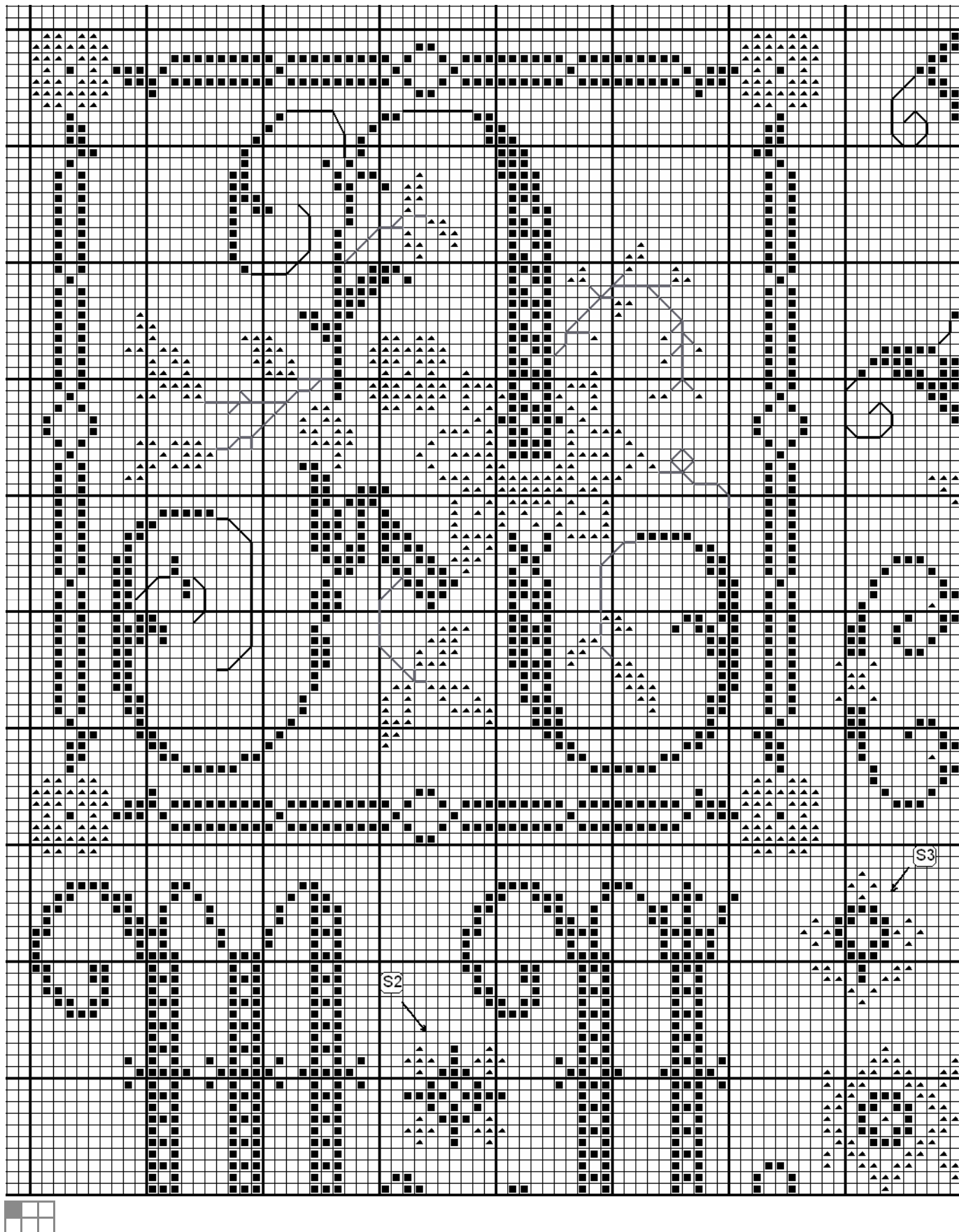


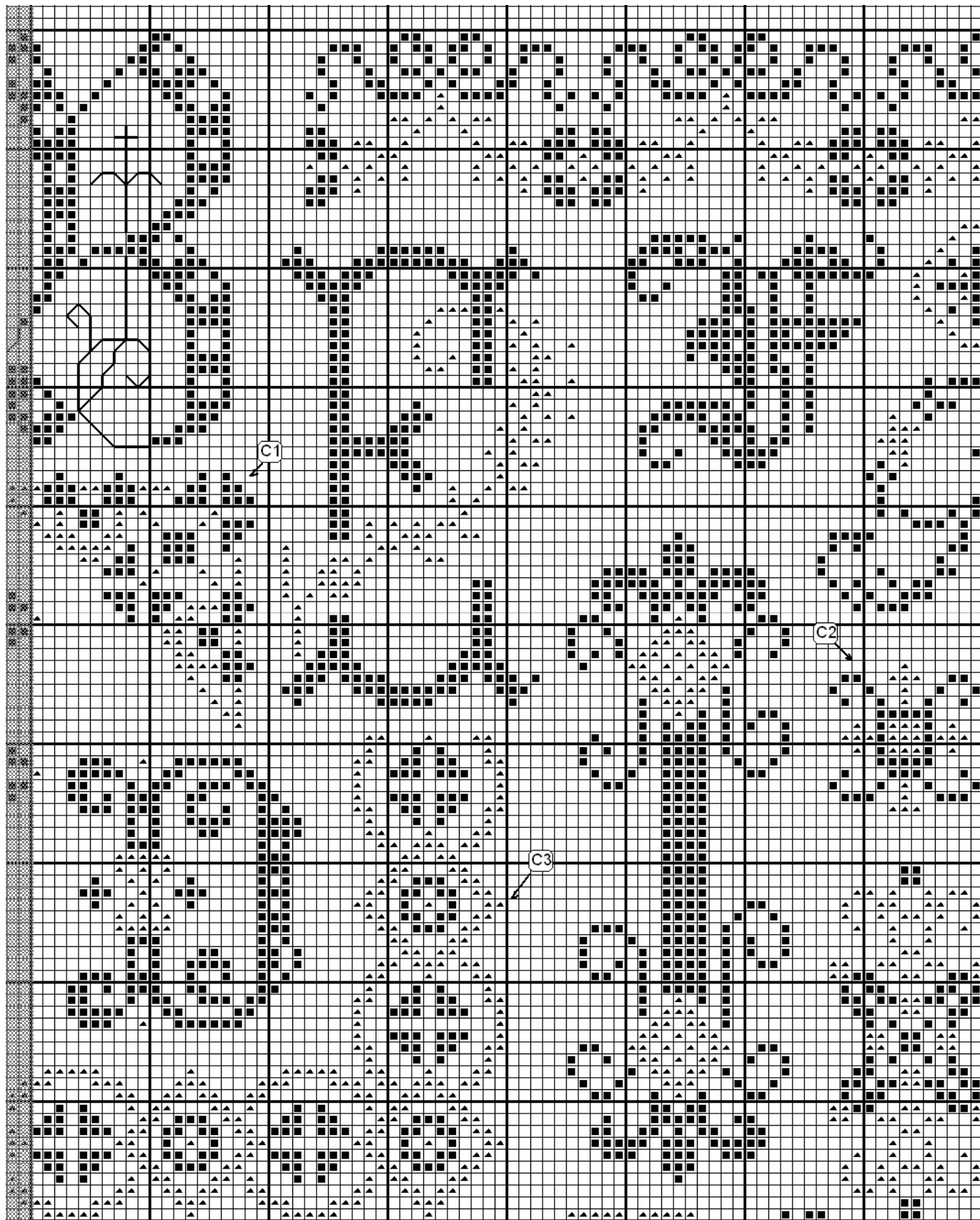
*Bonus Bookmarks*

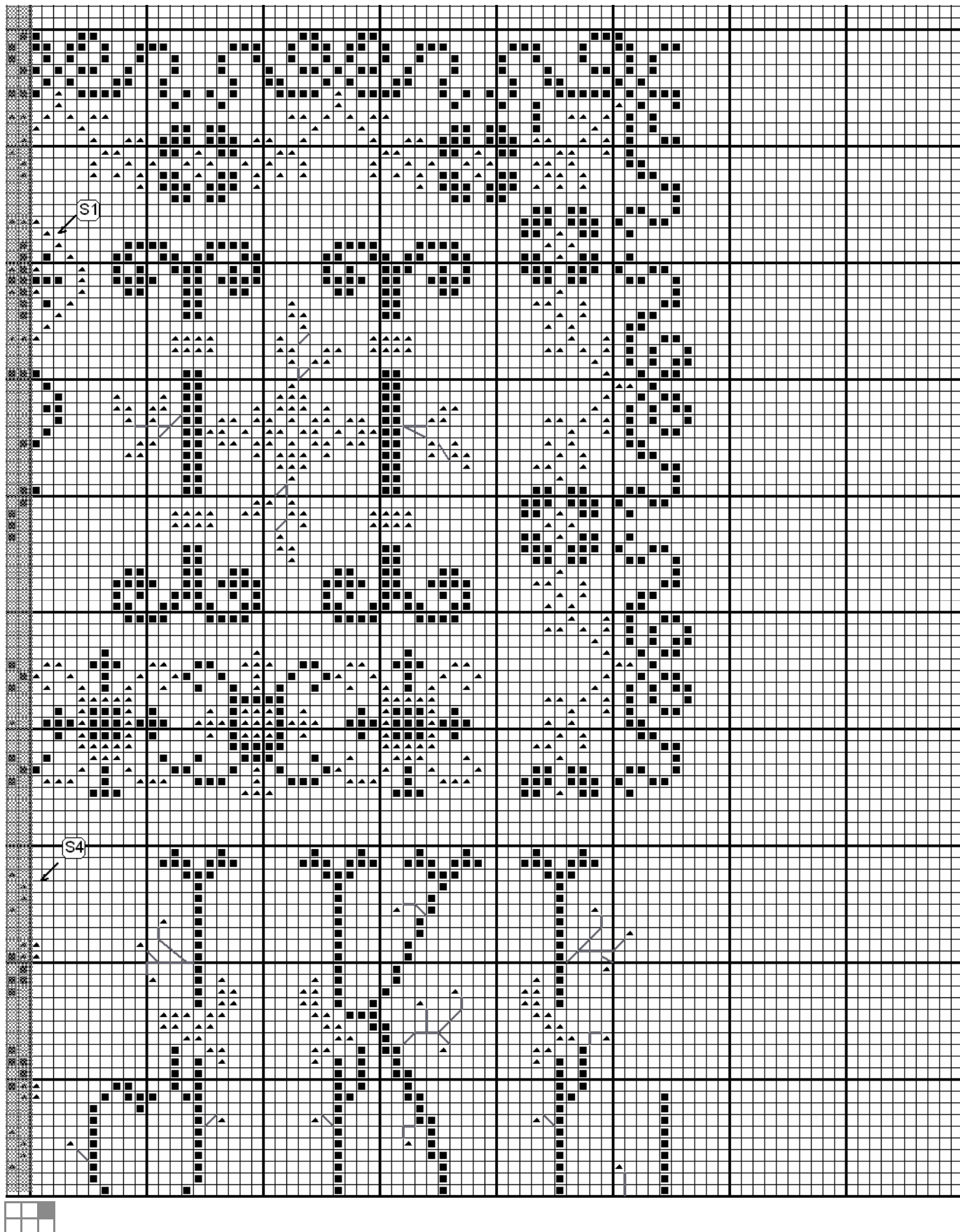
### Key

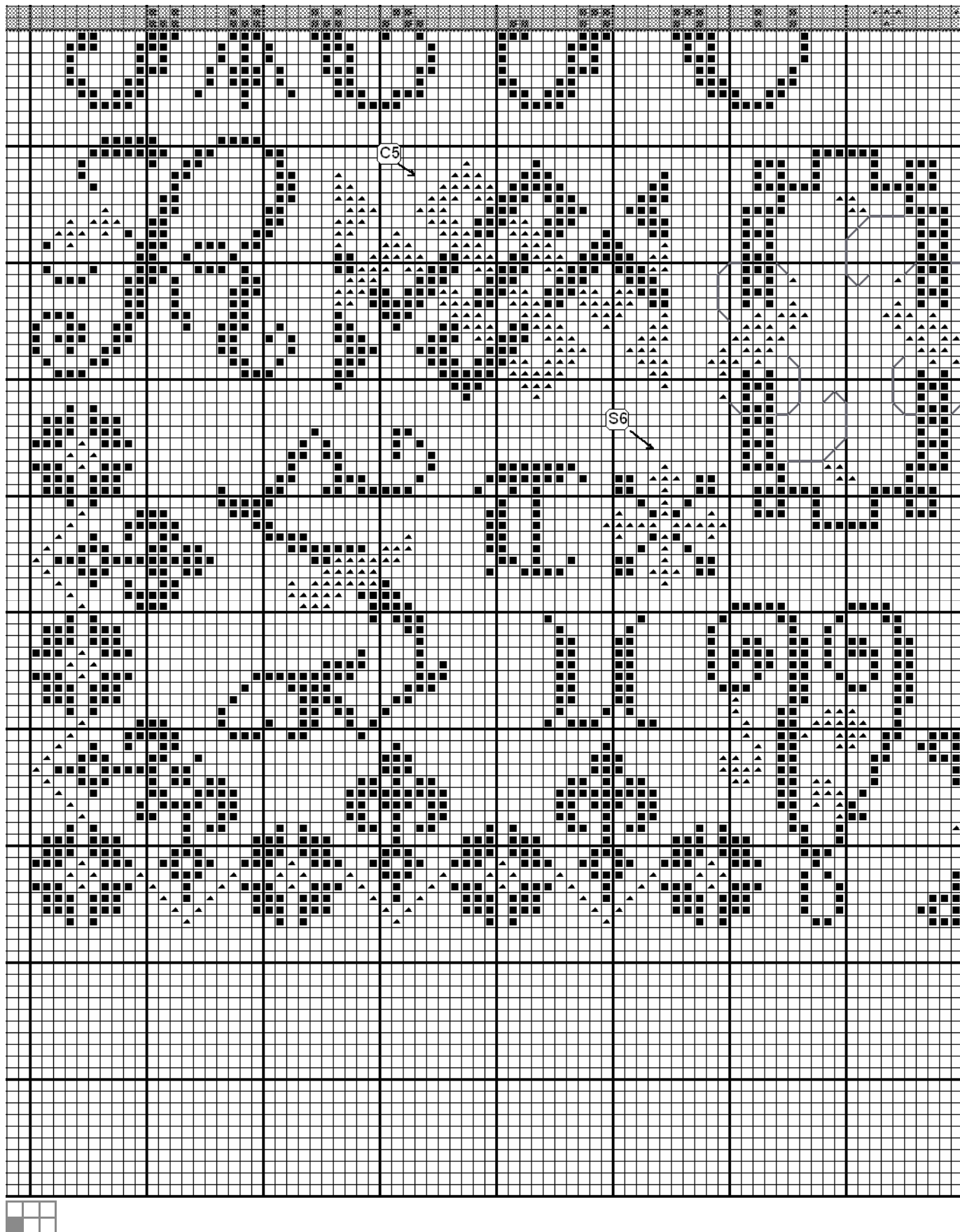
	CROSS STITCH	Qty (m)	Qty yds
■	Colour 1 / darker colour	14	15
♥	Colour 2 / lighter colour	6	7
	BACKSTITCH/SPECIALITY STITCH		
—	Backstitch—Colour 1		
—	Backstitch—Colour 2		

The above thread quantities are to work the sampler entirely in cross stitch, in 1 strand of 6-strand floss, and on 16/32 count fabric. If you choose to work the cutwork areas, you will also need No 8 and No 12 Perle cotton to match your fabric.

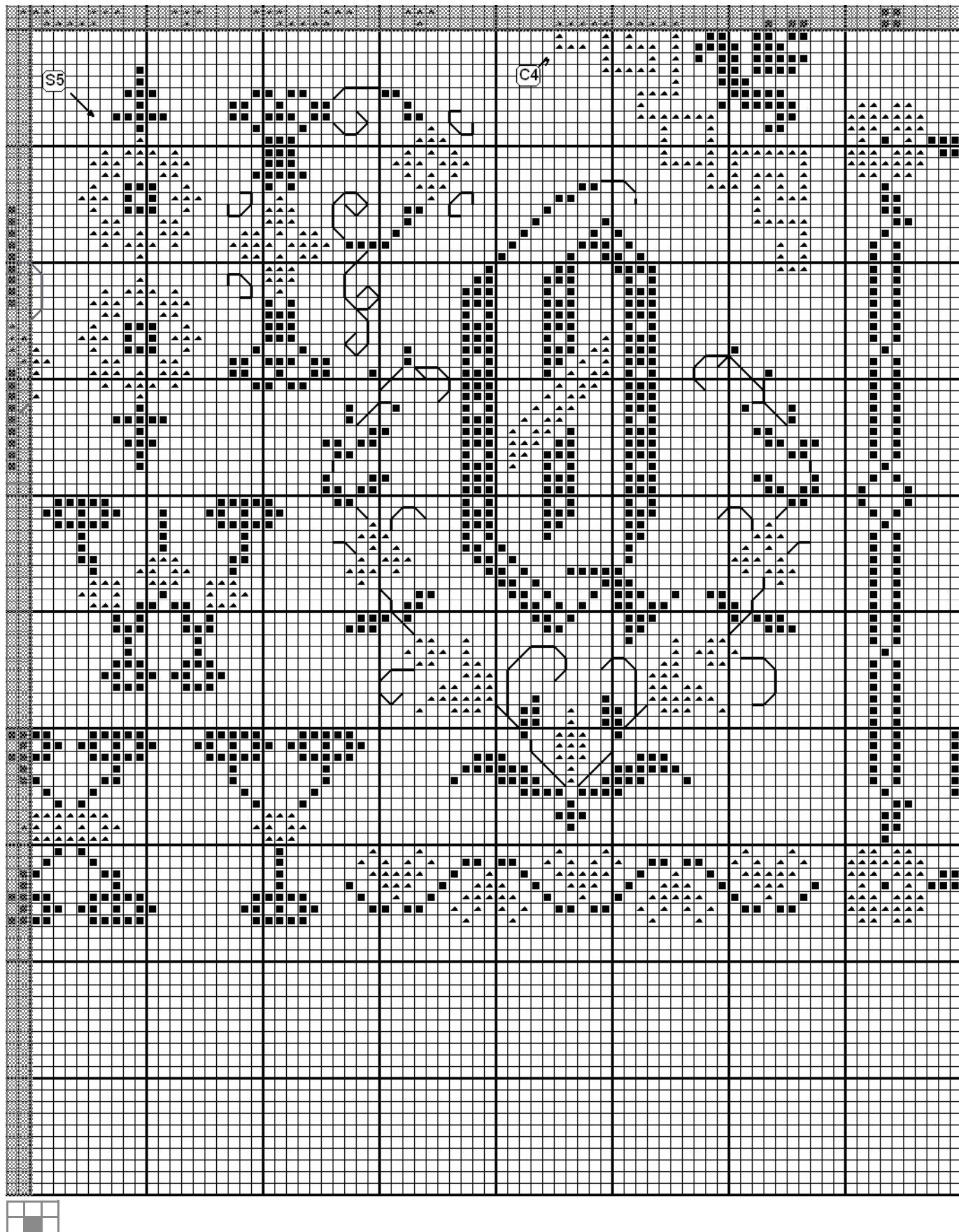


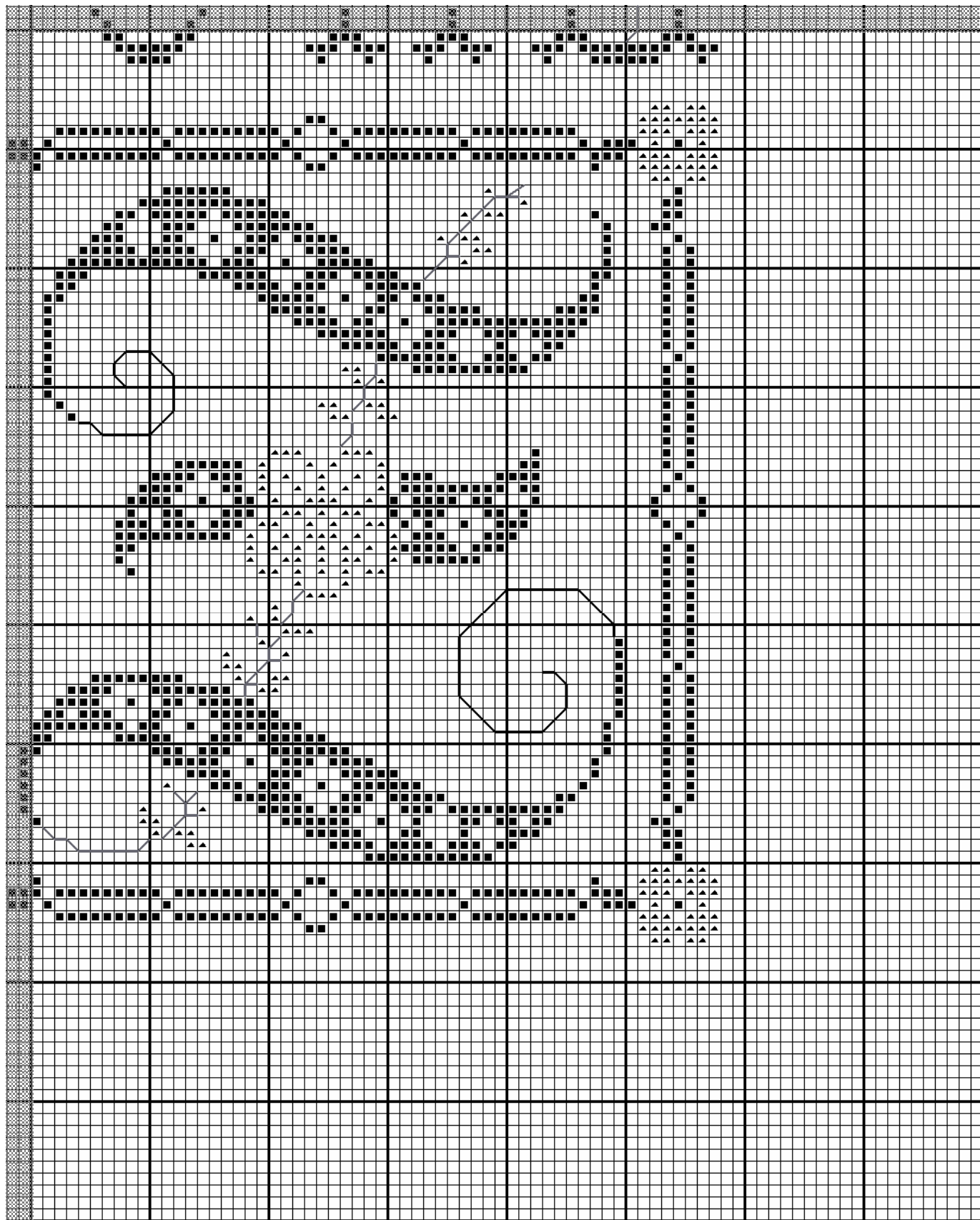












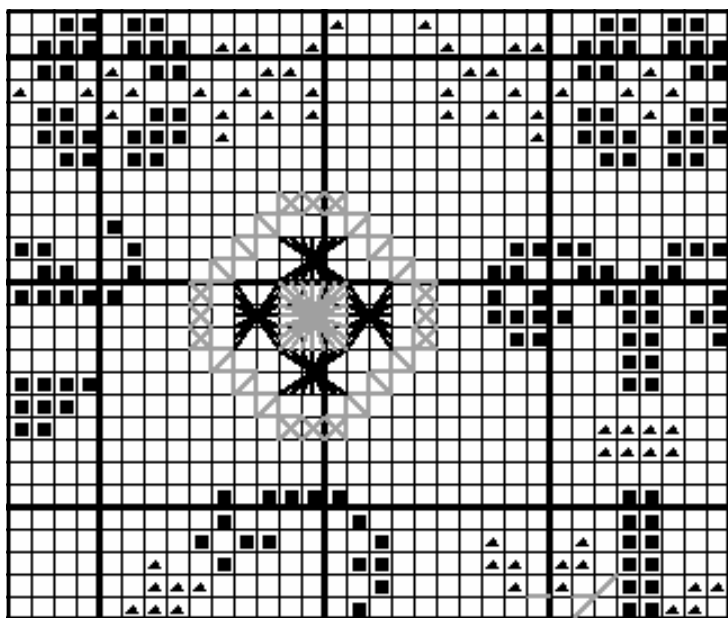


# Stitch Instructions

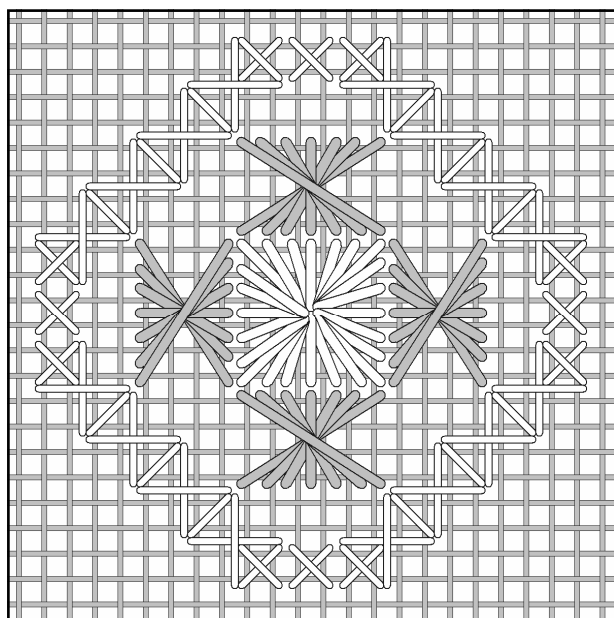
The following charts and diagrams show how to work all speciality stitches and cutwork. The detail **charts** show how these areas fit into the design, and in these charts, each square represents **two** fabric threads. The detail **diagrams** show how the individual stitches fit into the motif. The stitch diagrams show how to work the stitches. Each square in these diagrams represents **one** fabric thread. Bring your needle up to the right side of the fabric at the odd numbers, and go back down at the even numbers. Unless otherwise stated, use 1 strand of floss to work the speciality stitches.

## Speciality Stitch Areas

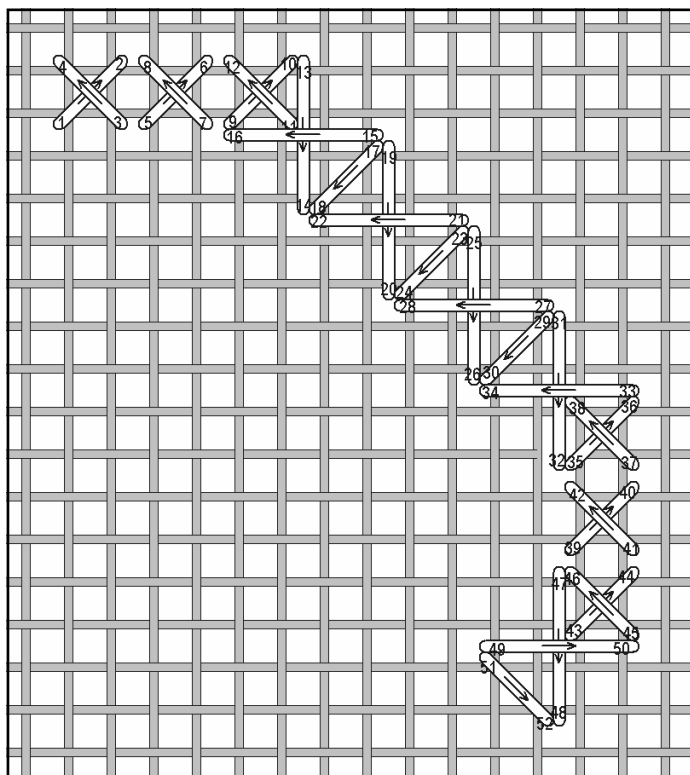
### Area S1—Diagonal cross stitch, Square Eyelet, and Partial Rhodes Stitch



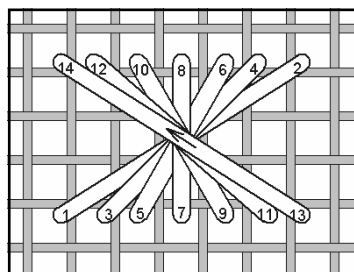
Area S1 Detail chart



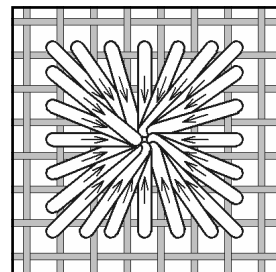
Area S1 Detail Diagram



Diagonal Cross Stitch

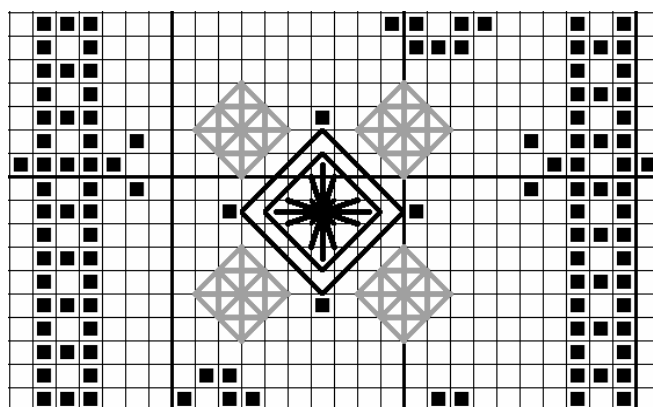


Partial Rhodes Stitch

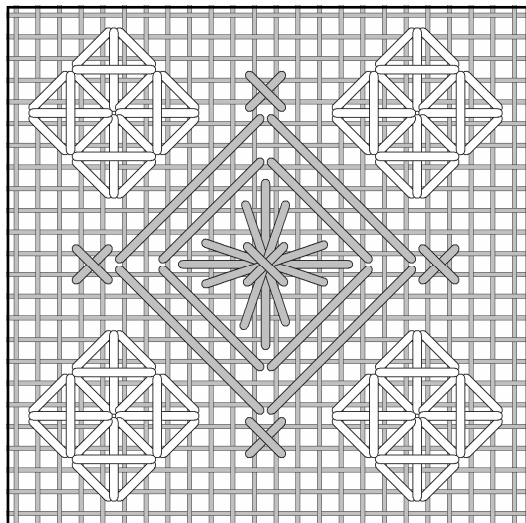


Square Eyelet

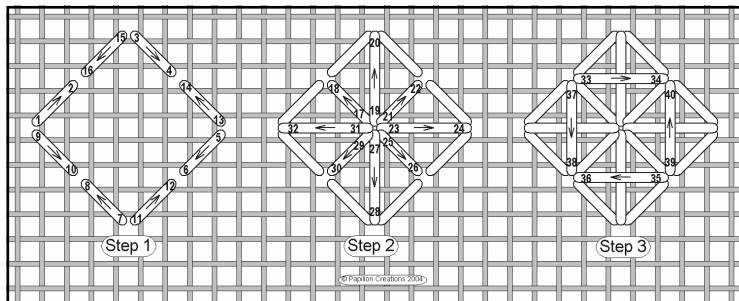
### Area S2—Mordvinian Star Stitch, Tied Windmill Stitch and Backstitch.



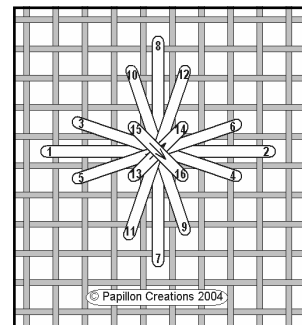
Area S2 Detail chart



Area S2 Detail Diagram

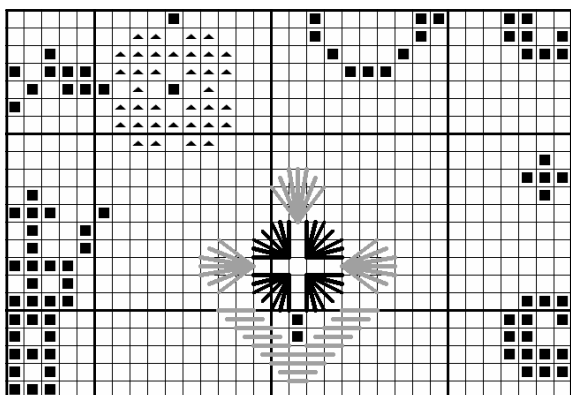


Mordvinian Star Stitch



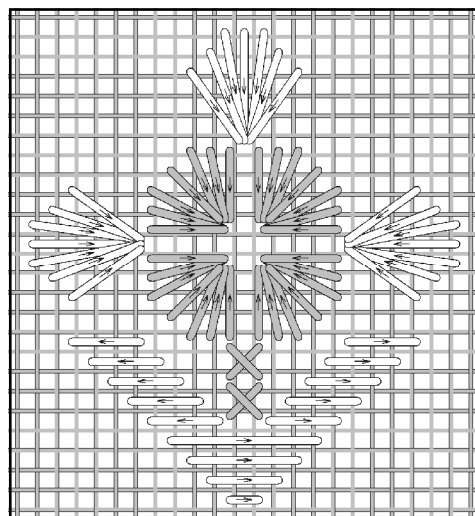
Tied Windmill stitch

Area S3 Satin Stitch, Divided Octagonal Eyelet Stitch and Modified Ray Stitch.

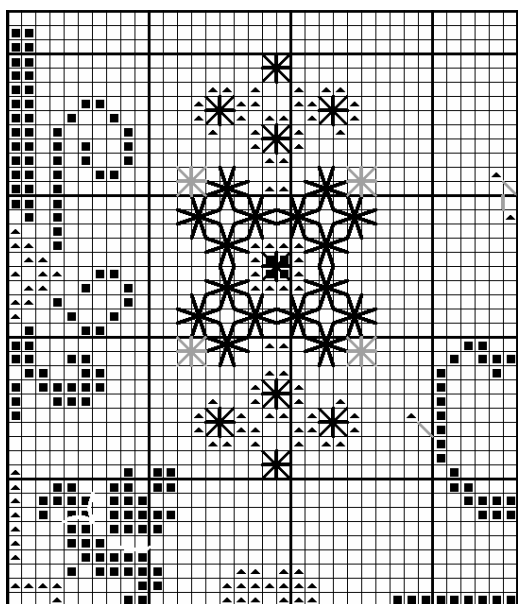


Area S3 Detail chart

Area S3 Detail Diagram →

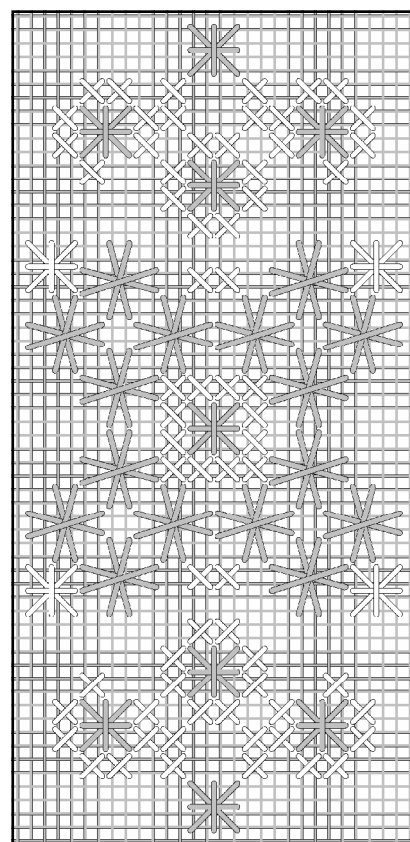


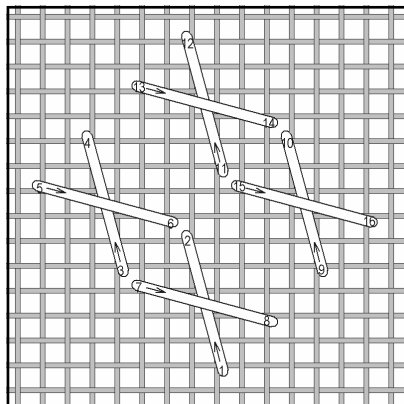
Area S4—Smyrna Cross Stitch and Chequered filling stitch



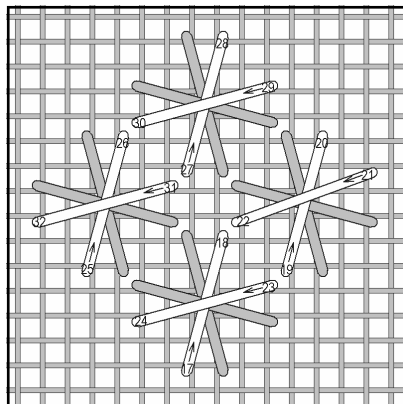
Area S4 Detail chart

Area S4 Detail Diagram →



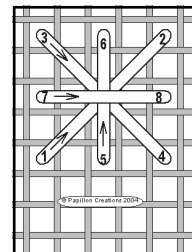


*Chequered filling stitch—step 1*



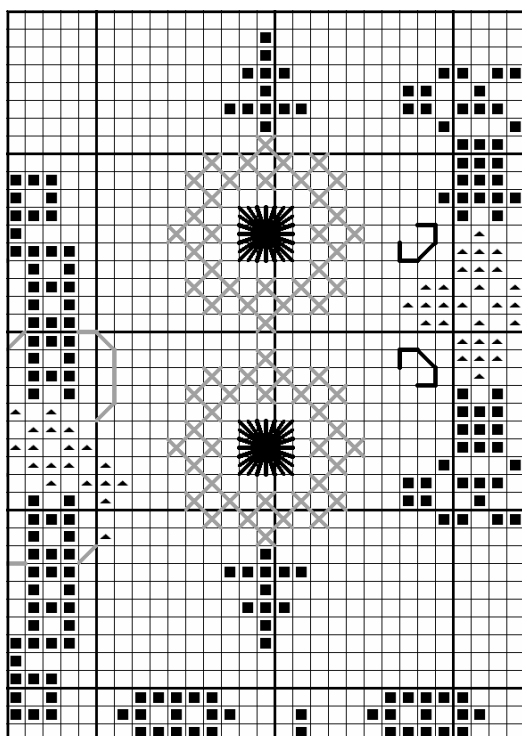
*Chequered filling stitch—step 2*

Chequered filling stitch is a pulled stitch—each time the thread is on the surface of the fabric, pull gently in the direction the stitch is to be made to open up lacy holes.

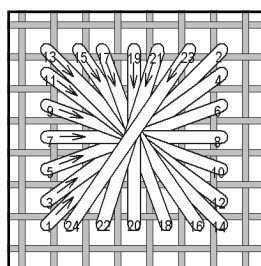


*Smyrna Cross →*

### *Area S5—Enclosing Interlaced Stitch and Rhodes Square Stitch*

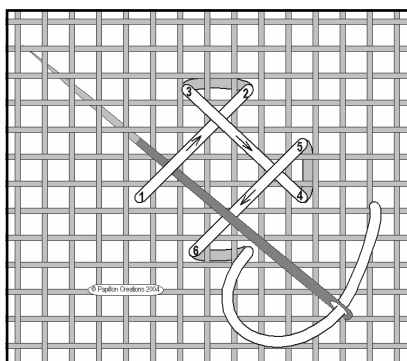


*Area S5 Detail chart*

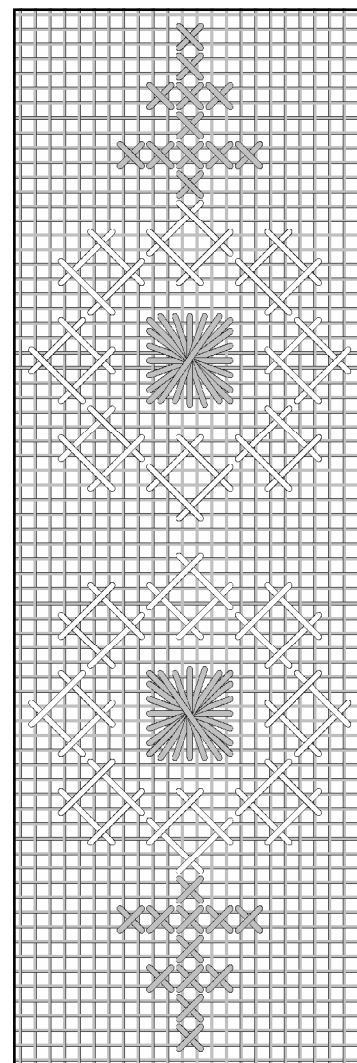


*Rhodes Square Stitch*

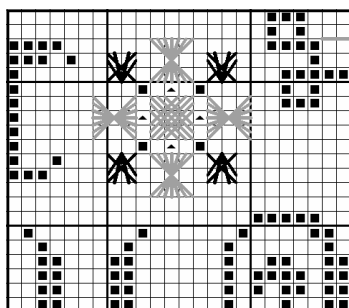
*Area S5 Detail Diagram →*



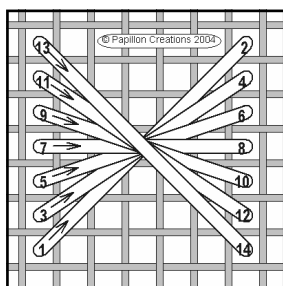
*Enclosing Interlaced Stitch*



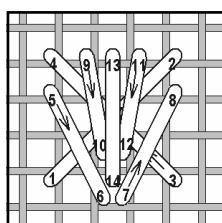
### *Area S6 Norwich Stitch, partial Rhodes Stitch and Rapid Stitch*



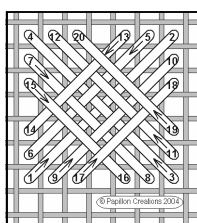
*Area S6 Detail chart*



*Partial Rhodes Stitch*

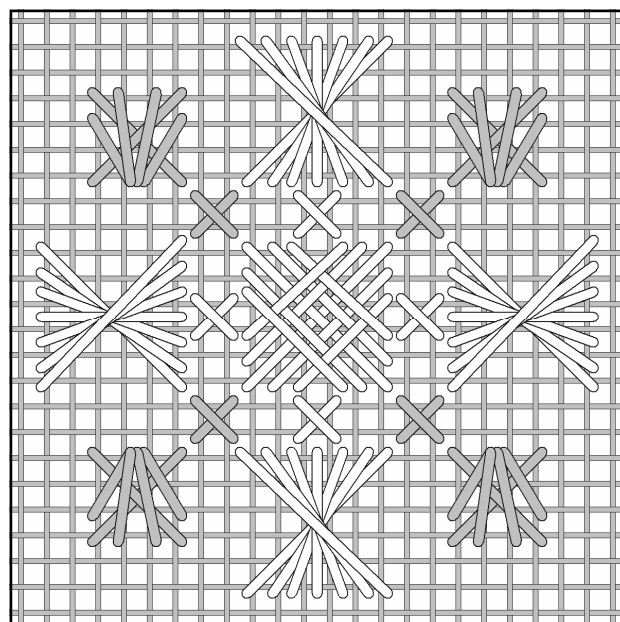


*Rapid Stitch*



*Norwich stitch*

*Area S6 Detail Diagram →*



## General Cutwork Instructions

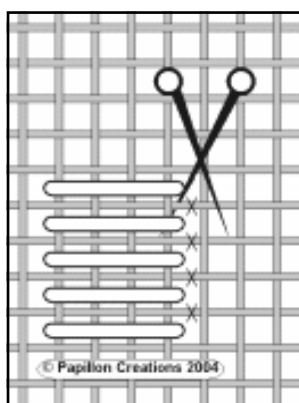
Cutting your embroidery fabric may seem daunting, but if you follow a few guidelines, it can be done without any problems. The essentials for cutting are:

A pair of sharp, fine-pointed scissors – There are many good makes of scissor on the market. Any that are sold for Hardanger embroidery are perfect for this kind of cutwork as well.

Good daylight – It is never a good idea to try to cut the threads in electric lighting. Choose a fine day and sit near the window.

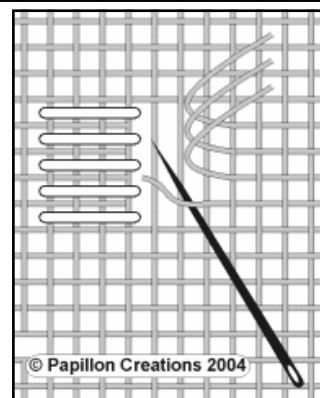
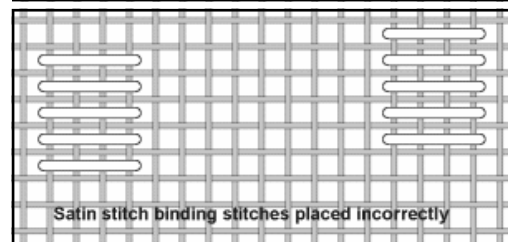
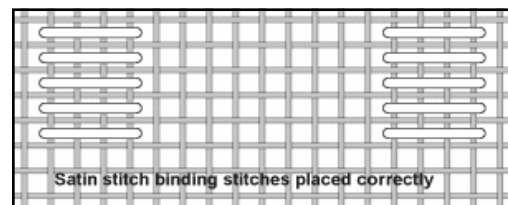
A steady hand – never do cutwork at the end of a long day.

The drawn thread work bands in the sampler use satin stitch at either end of the band. This forms a binding which stops the horizontal threads from fraying once they have been cut. The satin stitch should be worked first, before any of the threads are cut. *It is very important to make sure that the satin stitches at each end of the band match up.* If they are not lined up correctly, you could cut a horizontal thread which is not bound by the satin stitch, leading to fraying.

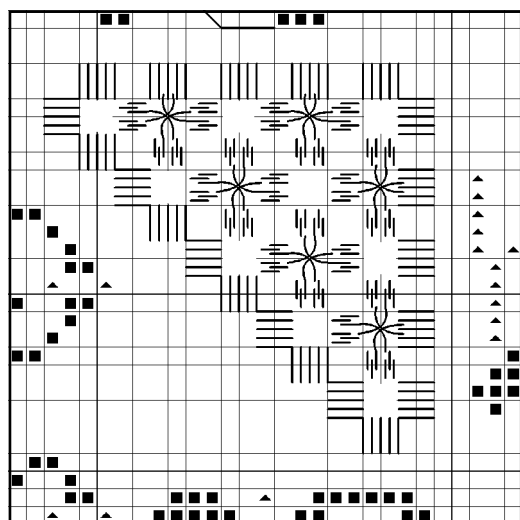


Cutting fabric threads

Once you have completed the satin stitch at each end of the band, the horizontal threads to be cut should be snipped close to the satin stitches. Only threads inside the satin stitch binding can be cut. For example, if you look at the diagram on the left, there are five satin stitches. The four horizontal threads marked with an X can safely be cut, as these are enclosed by the satin stitches. In some bands there will be one area of horizontal threads enclosed by the satin stitch to be cut away. In others, there will be several areas, with unworked threads in between, forming fabric bands which can be embellished with stitches. When you are leaving fabric bands, it is essential to make sure you are cutting the same threads at either end of the band. To remove the cut threads, use the tip of your needle to ease the threads out of the fabric, then either use tweezers or your fingers to pull them out completely.



Removing fabric threads →



Area C1 Detail chart

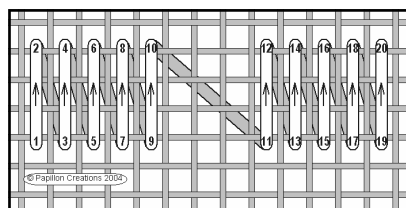
### How to work woven bars

Secure the thread in the back of the kloster block and come up through the square of withdrawn threads. Take the needle down through the centre of bar of fabric threads and up through the adjacent square of withdrawn threads (step 1). Continue, weaving back and forth, to the end of the bar (step 2).

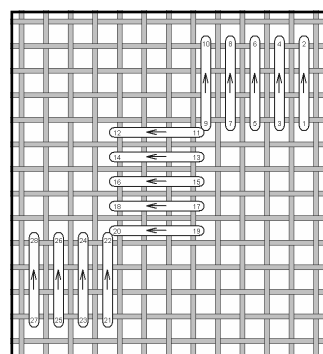
Woven bars →

### Area C1 Hardanger—Kloster blocks, woven bars and Dove's Eyes

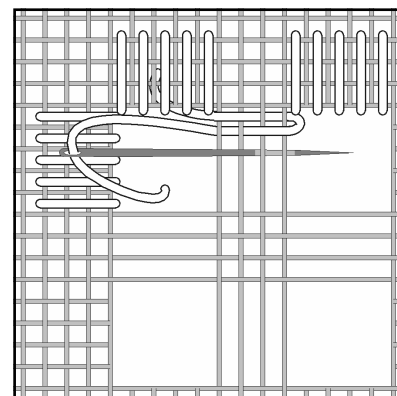
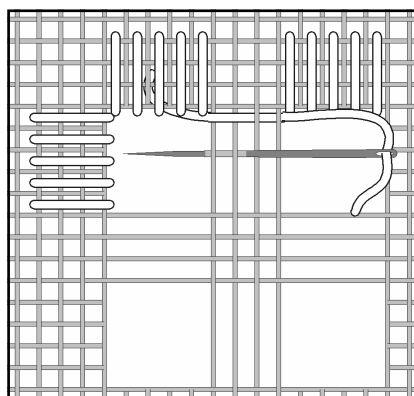
Using 1 strand of No 8 Perle, work the kloster blocks. Work the woven bars and dove's eyes, using No 12 perle.



Side-by-side kloster blocks

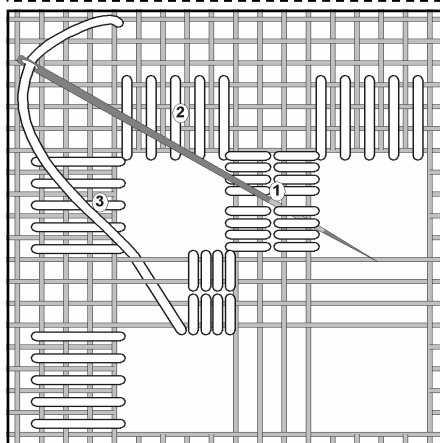


Stair-step kloster blocks →

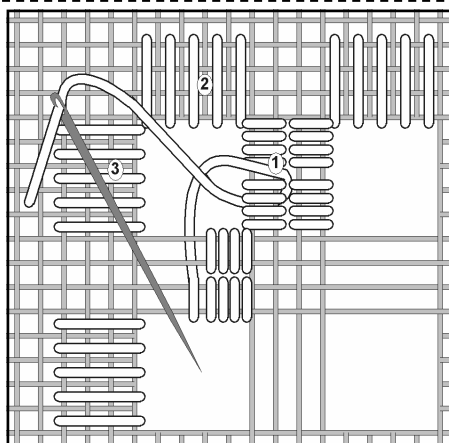


### How to work a dove's eye

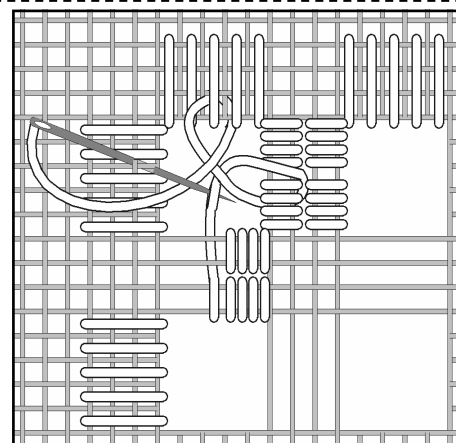
This stitch can be worked into kloster blocks, needlewoven bars, or a combination of the two. Complete the needleweaving on three and a half sides of a square of withdrawn threads. Come up into the middle of the square of withdrawn threads, then go down through the centre of the needlewoven bar 1, which is the bar to the right (step 1). Bring the working thread back up and loop over the first thread (step 2). Then go down through the centre of the needlewoven bar or kloster block 2. Continue like this until you reach the half-woven bar. Slip the needle under the first thread (step 3), then go back down through the centre of the half-woven bar, and continue the needleweaving to the end.



Dove's eye step 1

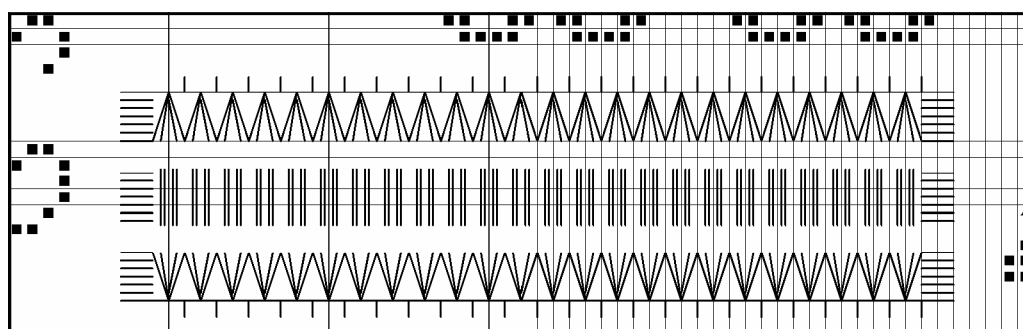


Dove's eye—step 2



Dove's eye—step 3

### Area C2— Satin Stitch, Single Hemstitch and Quick Serpentine Hemstitch

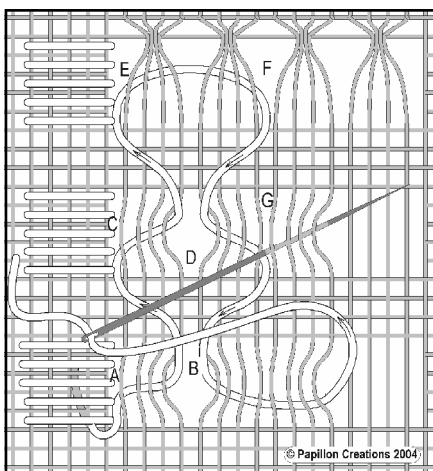


←Area C2 Detail chart

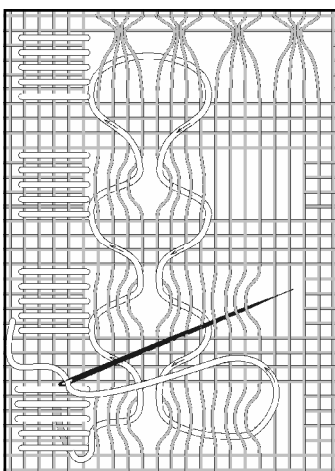
Work the satin stitch binding stitches, following the detail chart for placement. Once the satin stitches have been worked at both ends of the band, remove 6 threads, leave 4 threads then remove another 6, leave 4 then remove another 6 threads. Work Petite single hemstitch along the top and bottom of the outer cut areas.

Single Hemstitch is worked in **No 12 Perle** thread, from **left to right**, with the **wrong** side of the fabric facing you. Secure the thread in the back of the satin stitches as shown. Go down through space B, up through space A then back through B and out through hole 1.

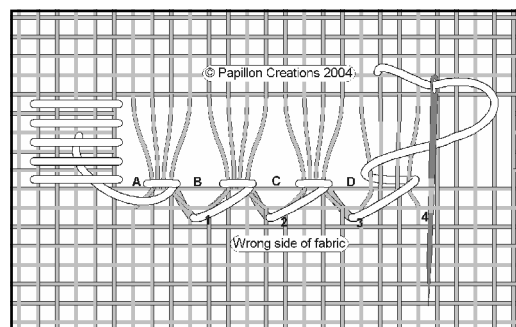
Go down through space C, back up through B, then back down through C and out at 2. Continue like this to the end.



Quick Serpentine Hemstitch - step 1



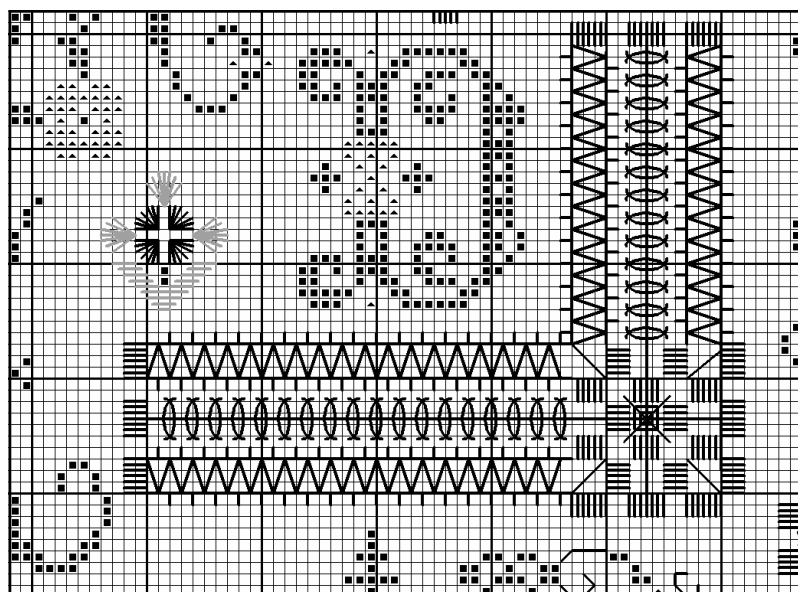
Quick Serpentine Hemstitch - step 2



### Quick serpentine hemstitch

This stitch is worked in **No 12 Perle** cotton, from **left to right**, and with the **right** side of the fabric facing you. Secure the thread in the back of the satin stitch binding at the bottom of the band and come up immediately below the satin stitch binding. Go down through space A and back up through space B – 4 threads to the right. Pass over the fabric band and go down through C, then up through D. Pass over the next fabric band and go down through E and up through F. Go back down through D and up through G. Finally, go back down through B, ready to start again. Repeat to the end and fasten off in the satin stitch binding.

### Area C3 Satin Stitch, Zigzag Hemstitch Interlaced hemstitch, woven bars and Ribbed Corner

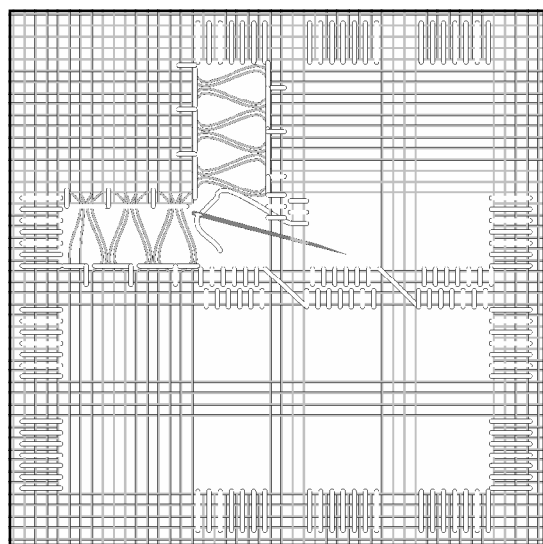


Area C3 Detail chart

Work the satin stitch binding stitches, following the detail chart for placement. Once the satin stitches have been worked at both ends of both "legs", remove 6 threads, leave 4 threads then remove another 6, leave 4 then remove another 6 threads. Do this in both directions. Work zigzag hemstitch and woven bars in the two outer areas, and work interlaced hemstitch in the central area. Finally work a ribbed wheel in the corner.

Zigzag hemstitch is worked using single hemstitch (see Area C2). First work single hemstitch along the outer edges of area C3. Next, work the same stitch along the fabric bands within the cut area. Start next to the satin stitch binding and take only two vertical fabric threads into the first cluster. After that, gather four threads into each cluster. Continue to the corner of the band, where you will have a final cluster of just two threads. When you reach the

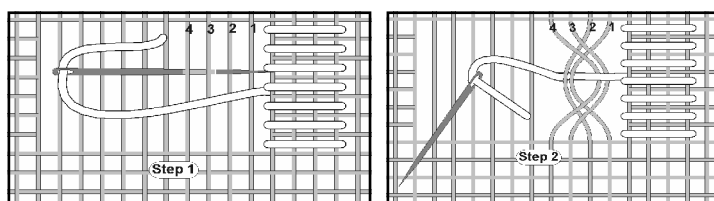
space where both the horizontal and vertical threads have been withdrawn, work woven bars (see area C1) over the area made by the withdrawal of the threads from the other "leg" of the corner. (see corner detail diagram) Fasten off in the satin stitch binding on the far side of the band.



Corner detail—woven bars

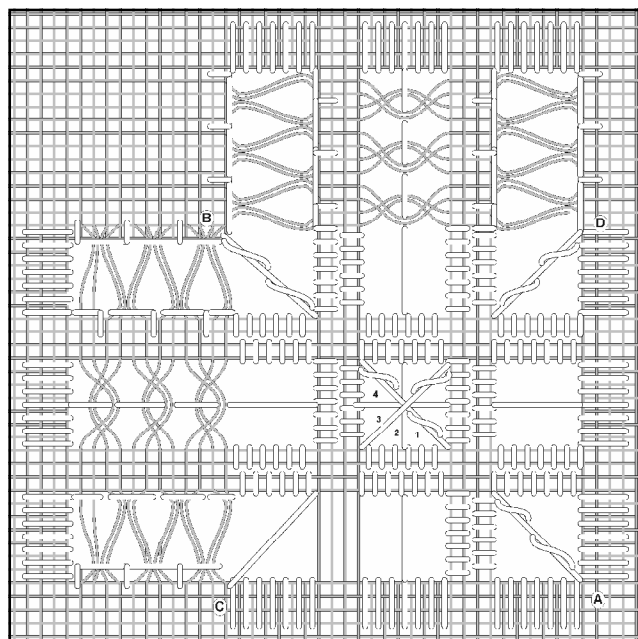
#### How to work interlaced hemstitch

This stitch is worked in **No 12 perle** cotton, from **right to left**, with the **right side** of the fabric facing you. With the needle pointing to the **right**, pass the needle tip **under** fabric threads 4 and 3, and **over** fabric threads 1 and 2 (step 1). Holding it in this position, twist the eye of the needle up and over, so that the tip is now pointing to the left. This will drag threads 1 and 2 under threads 3 and 4. Pull the working thread through to the left. The working thread will hold the cluster in position (step 2). Work to the end, passing over the empty space made by the withdrawal of both horizontal and vertical threads, and anchoring into the backs of the woven bars as you reach them.



#### How to work the corner ribbed wheel

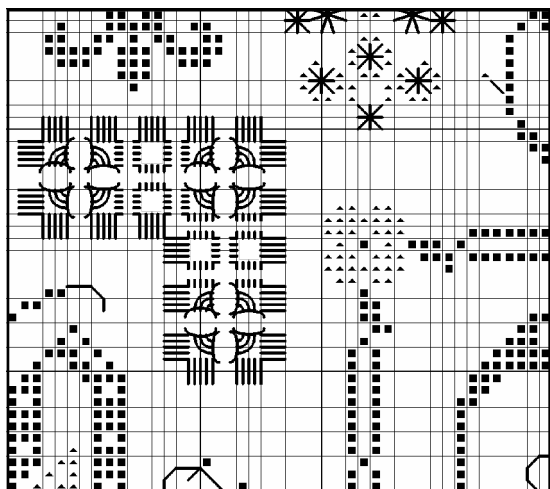
This is worked in **No 12 perle** cotton, with the **right side** of the fabric facing you. Secure your thread in the satin stitches at A and pass diagonally over the empty space made by the withdrawal of both horizontal and vertical threads. Go down into corner B, then return in the direction you came, wrapping the working thread around the thread you have laid down as you go. Fasten off. Repeat from corners C to D. When you reach the centre on the return trip, wrap to the centre then come up through space 2. Go back down through space 1, and up through space 3. go down through space 2 and up through space 4. Continue like this until you have made three complete turns. Finish wrapping the final spoke to corner C and fasten off.



Corner detail—Ribbed wheel →



### Area C4— Kloster Blocks, Divided Wrapped Bars and Greek Crosses

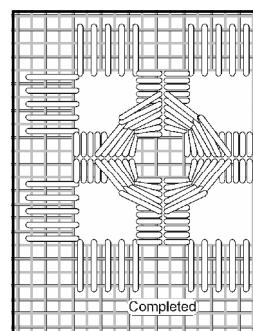
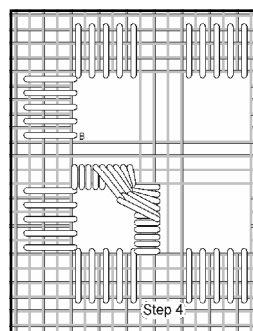
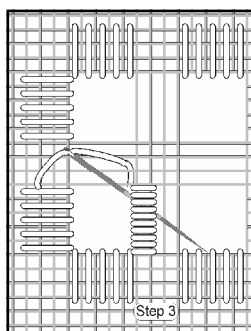
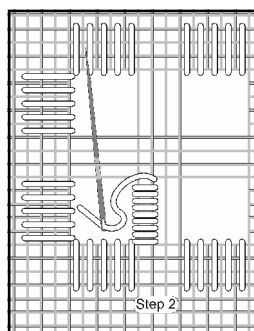
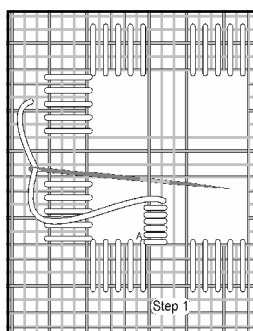


Area C4 Detail chart

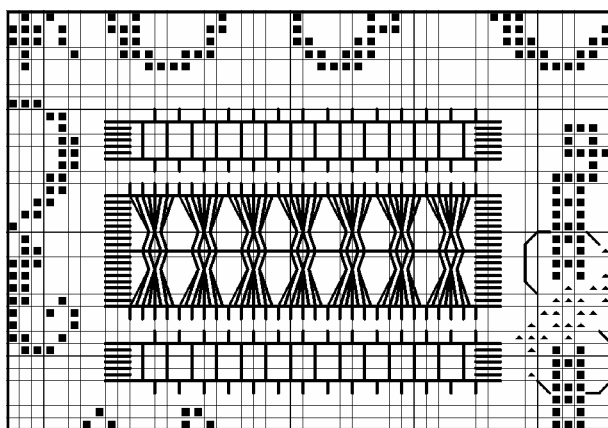
Work the Kloster blocks (see area C1), following the detail chart for placement. Once they have all been worked cut and remove the threads in both directions. Using No 12 Perle cotton, work Divided Wrapped bars and Greek crosses, placing the crosses as shown on the detail chart. Any bars not covered by the Greek crosses should be divided and wrapped as shown in step 1 of the Greek cross instructions.

#### How to work Greek Crosses

Starting at A, divide the bar of threads and wrap to the centre. (step 1) Then take the thread up through the middle of the adjacent bar (step 2). In a figure-of-eight movement, weave under and over these bars (step 3). The first stitches should be pulled tightly, then gradually become looser, to achieve the correct shape. Count how many wraps you make. When the woven area is the size you like, wrap to the end of the second bar. (step 4) Come up at B and continue in the same way until you have completed the Greek cross.



### Area C5— Ladder Hemstitch and Woven Wheels



Area C5 Detail chart

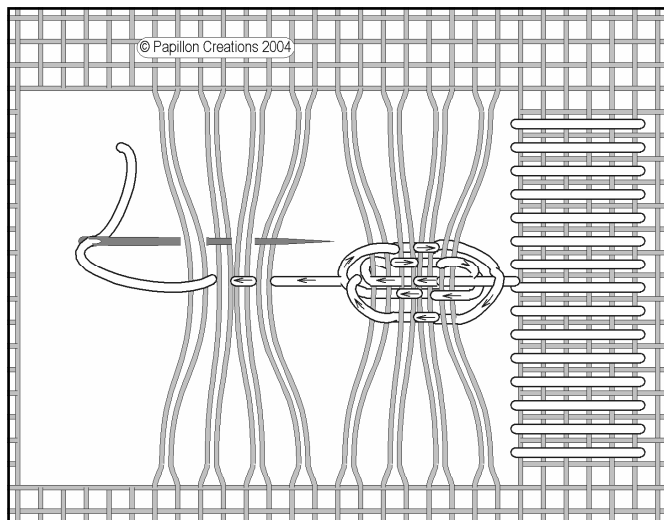
Work the satin stitch binding stitches, following the detail chart for placement. Remove 6 threads, leave 6 threads then remove 18, leave 6 then remove another 6 threads. Work ladder hemstitch in the two outer areas, and work the woven wheels in the central area.

Ladder hemstitch is worked using single hemstitch (see Area C2). First work single hemstitch along the outer edges of area C5, gathering four threads into each cluster. Next, work the same stitch along the fabric bands within the cut area. Take care to gather the same threads into the clusters as on the first row.

#### How to work Woven Wheels

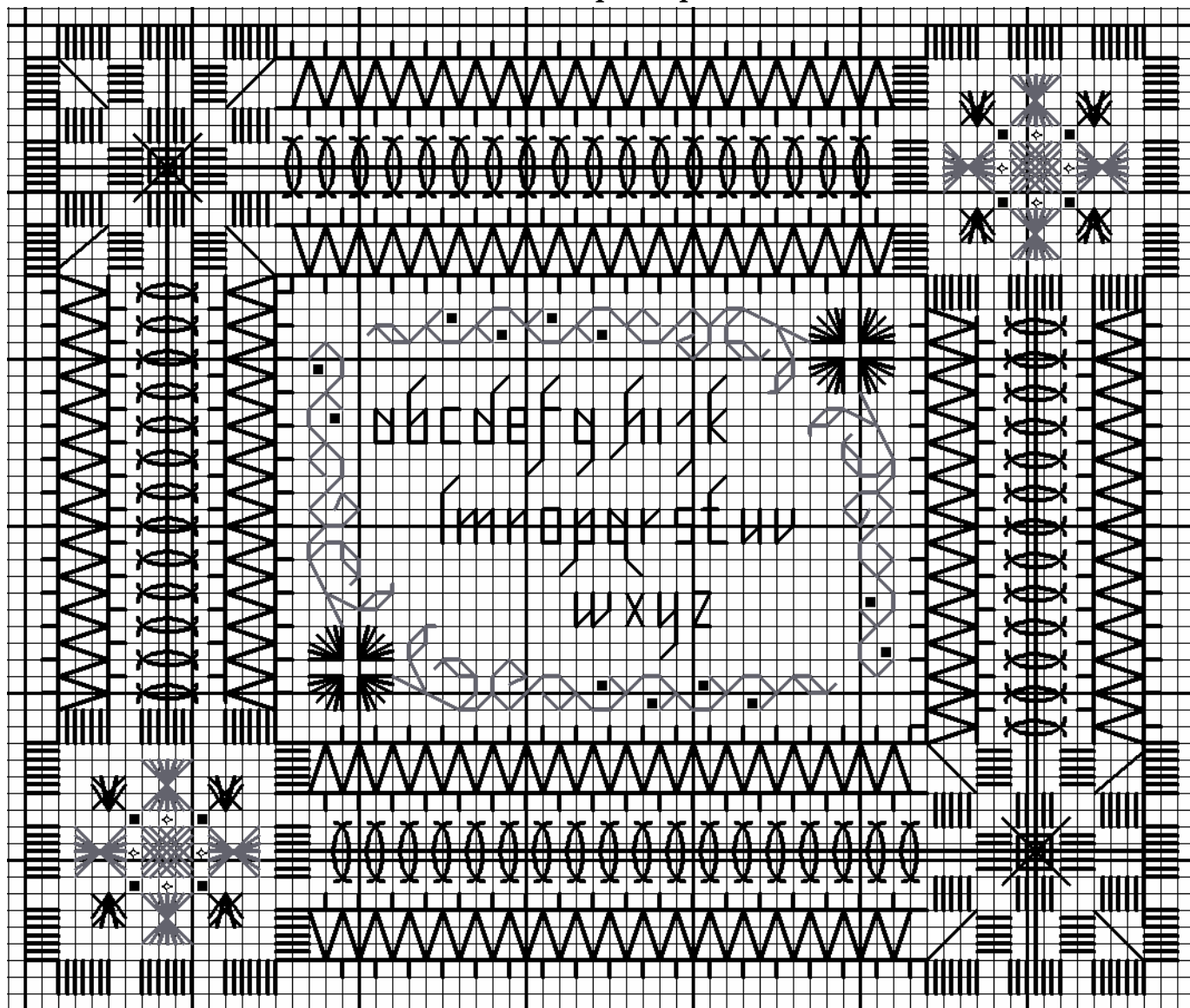
First, work ladder hemstitch along each side of the central area. **Take care!** This time you will only gather **two** threads into each cluster.

Now work the wheels: These are worked in **No 12 Perle cotton**, from **right to left** with the **right side** of the fabric facing you. Secure the thread in the back of the satin stitch binding and come up in the centre of the area. Taking the first four clusters of threads, pass under the first, over the second, under the third and over the fourth. Change direction and, starting by going under, weave back round the clusters, including the working thread in the weaving sequence. Make two and a half turns then, before moving on to the next set of four clusters, pass the needle down through the loop of thread where the last round of weaving started. This "locks the wheel, holding the woven threads snugly in position as you pass on to the next set of four clusters. Continue like this to the end and fasten off in back of the satin stitch binding.



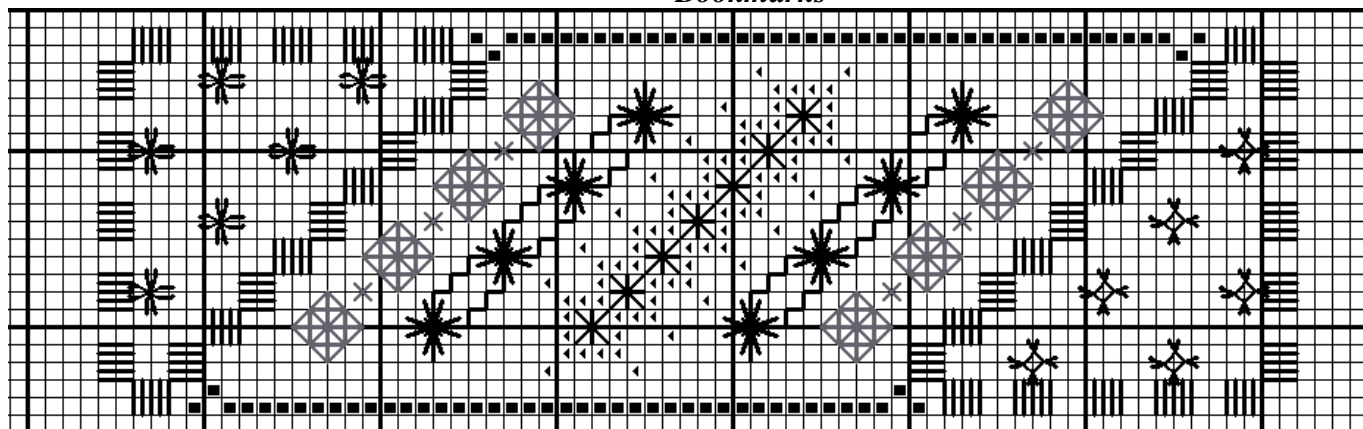
Woven Wheels

## Box Top Sampler



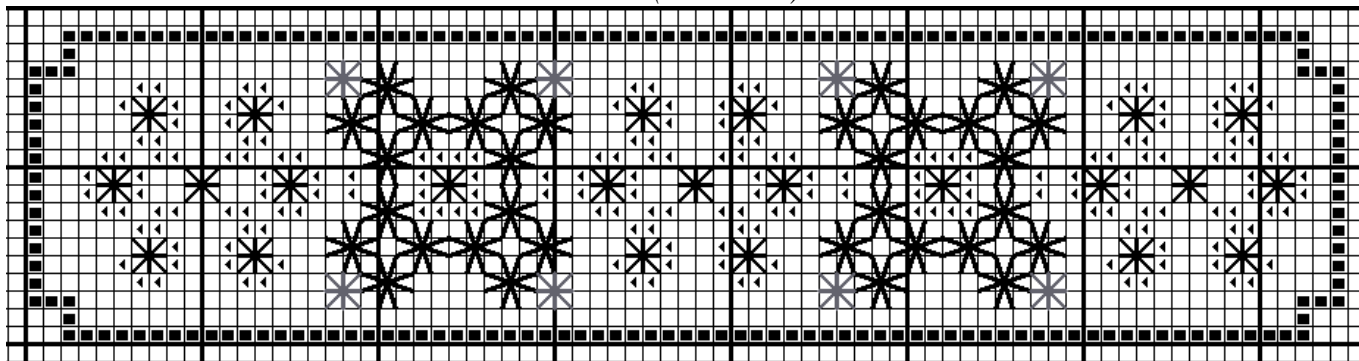
Work area C3 twice. **Take care!** The corner satin stitch at A and B share the same fabric hole. **Suggestion!** After each twist of the interlaced hemstitch, slip a bead onto the needle. The central vine is worked in backstitch with cross stitch “buds” (or use beads), and divided octagon “flowers” (see area S3). Work additional satin stitch blocks around the top left and bottom right corners, as shown on the chart. Then work area S6 in each of the resulting squares. **Suggestion!** Replace the cross stitches in these two areas with beads.

## Bookmarks

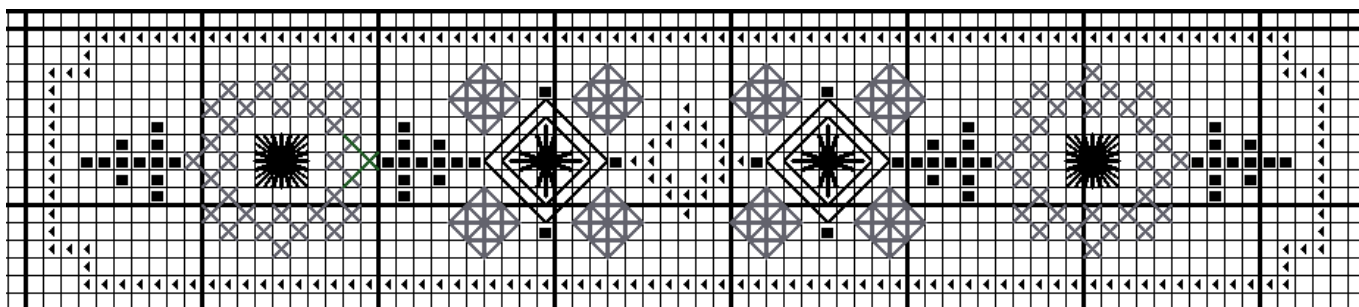


Work area C2, at the top and bottom of the bookmark. Join these two areas with cross stitches. Then work Mordvinian star stitches (area S2). Work cross stitches in between these stitches as shown on the chart. Next work Tied windmill stitches (area S2) and join these with backstitches, as shown on the chart. Finally, work Algerian eyelets and backstitch (area S3).

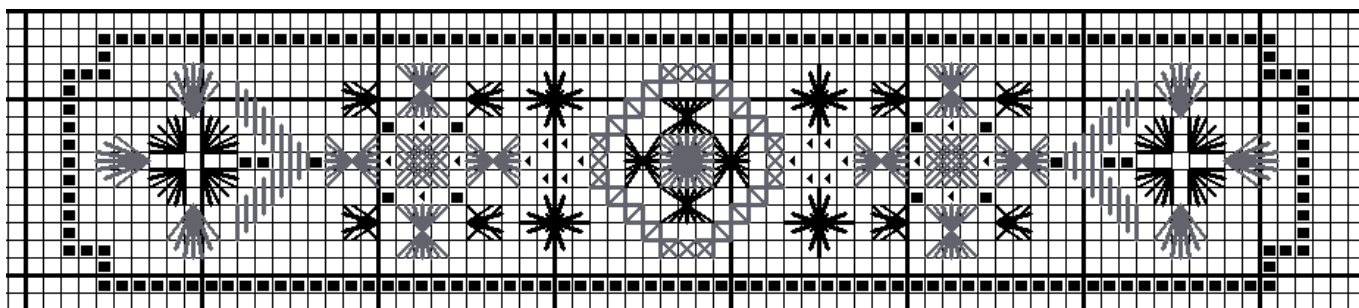
*Bookmarks (continued)*



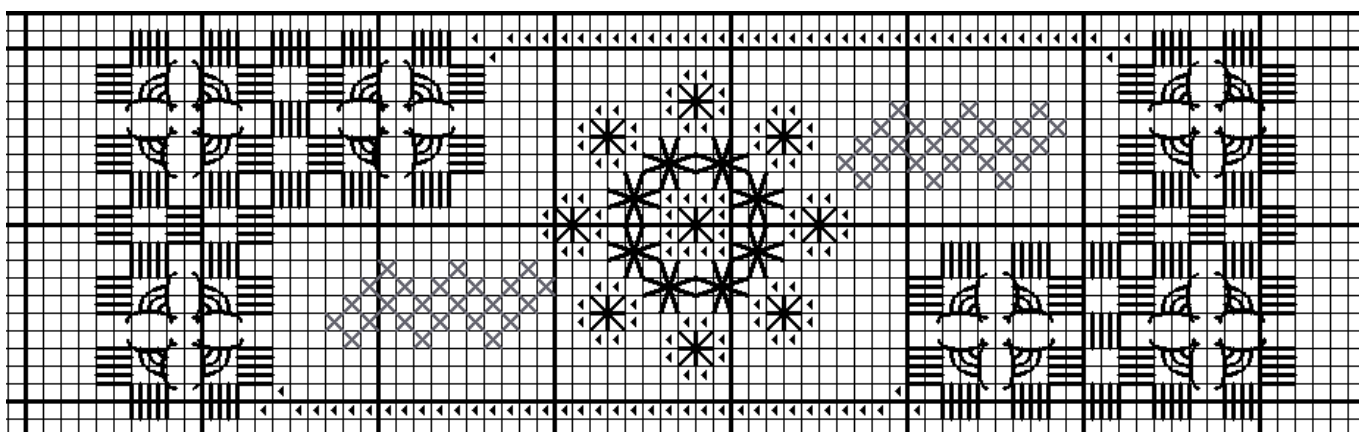
Work a cross stitch border, followed by a modified version of area S4.



Work a cross stitch border and central diamond, followed by a modified version of area S5 and area S2.



Work a cross stitch border, followed by areas S3, S6 and S1.



Work area C4, at the top and bottom of the bookmark. Then work enclosing interlaced stitch (area S5) cross stitch, Algerian eyelets and chequered filling stitch (area S4). Take care! This time, the chequered filling stitch should be worked following the diagram on the right.

