

Blossom Time

This is the second in a series of four small seasonal samplers. It is worked mainly in cross stitch, but also includes some simple speciality stitches which are easy and fun to stitch, and really add to the impact of this sampler. Only two colours are used. Try working it in some of the beautiful hand-dyed silks that are on the market. To add extra sparkle, why not use a metallic thread for the speciality stitches.

Design size:- 125 x 125 stitches

Finished stitched size:

14/28 count 9 x 9 inches

16/32 count 8 x 8 inches

Add 8 inches to above measurements to allow for framing.

Thread requirements:

Using 2 strands of 6 strand thread for cross stitch, and one strand for the speciality stitches.

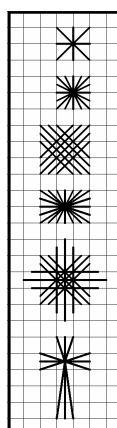
Colour 1 ■ (Cross stitch) — 25 yards

Colour 2 ○ (Cross stitch and Speciality stitches) — 14 yards

The above thread requirements are approximate only.

The model was stitched on 32 count ivory Lugana using 1 strand of Gloriana silks in Twilight and Winter Brook.

Speciality Stitch Key



Smyrna Cross

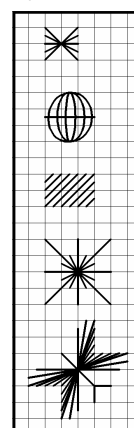
Rhodes square

Partial Norwich

Rhodes Oblong

*Triple Woven
Cross Flower*

Eyelet Cross



Partial Rhodes Square

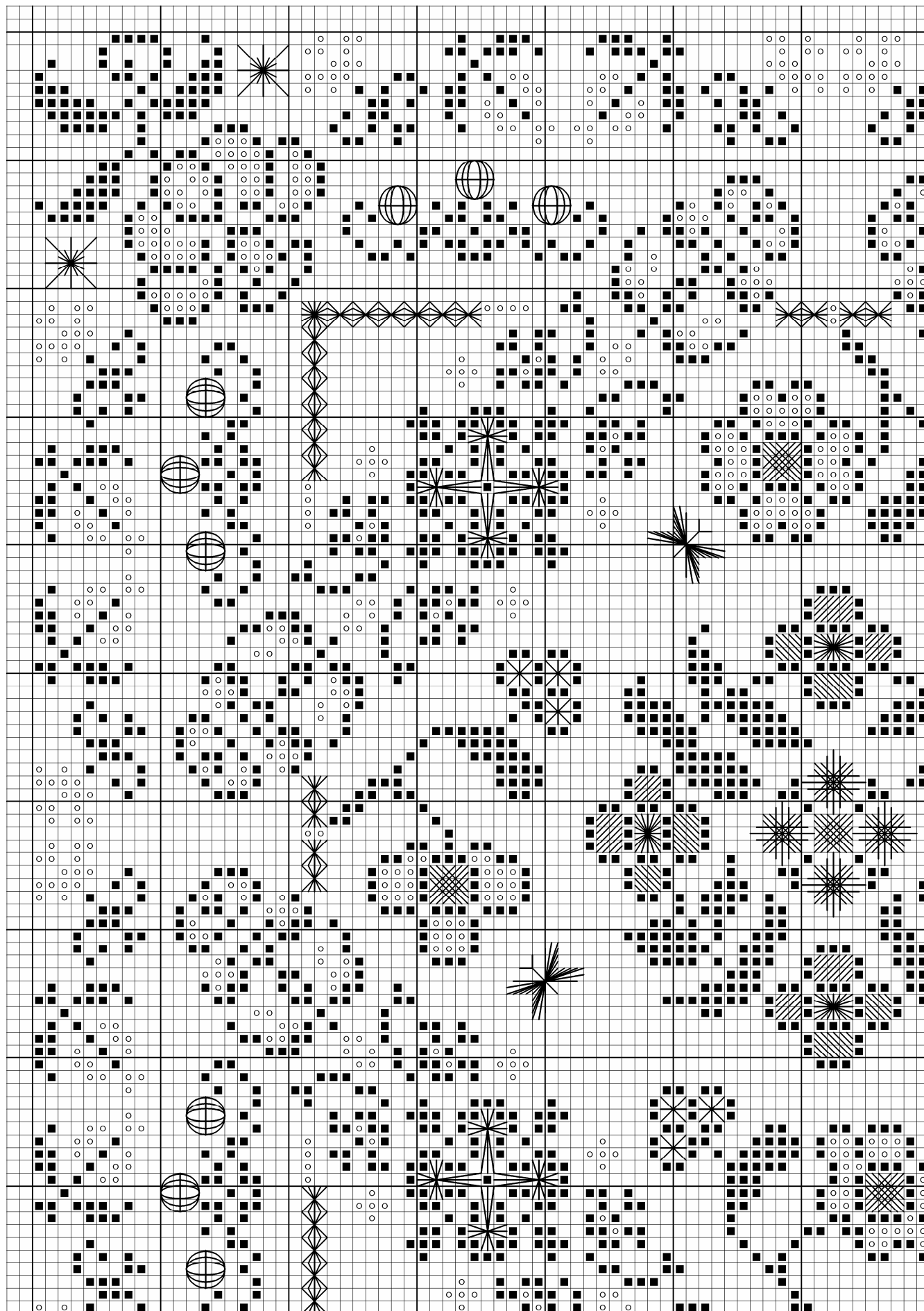
Large Queen

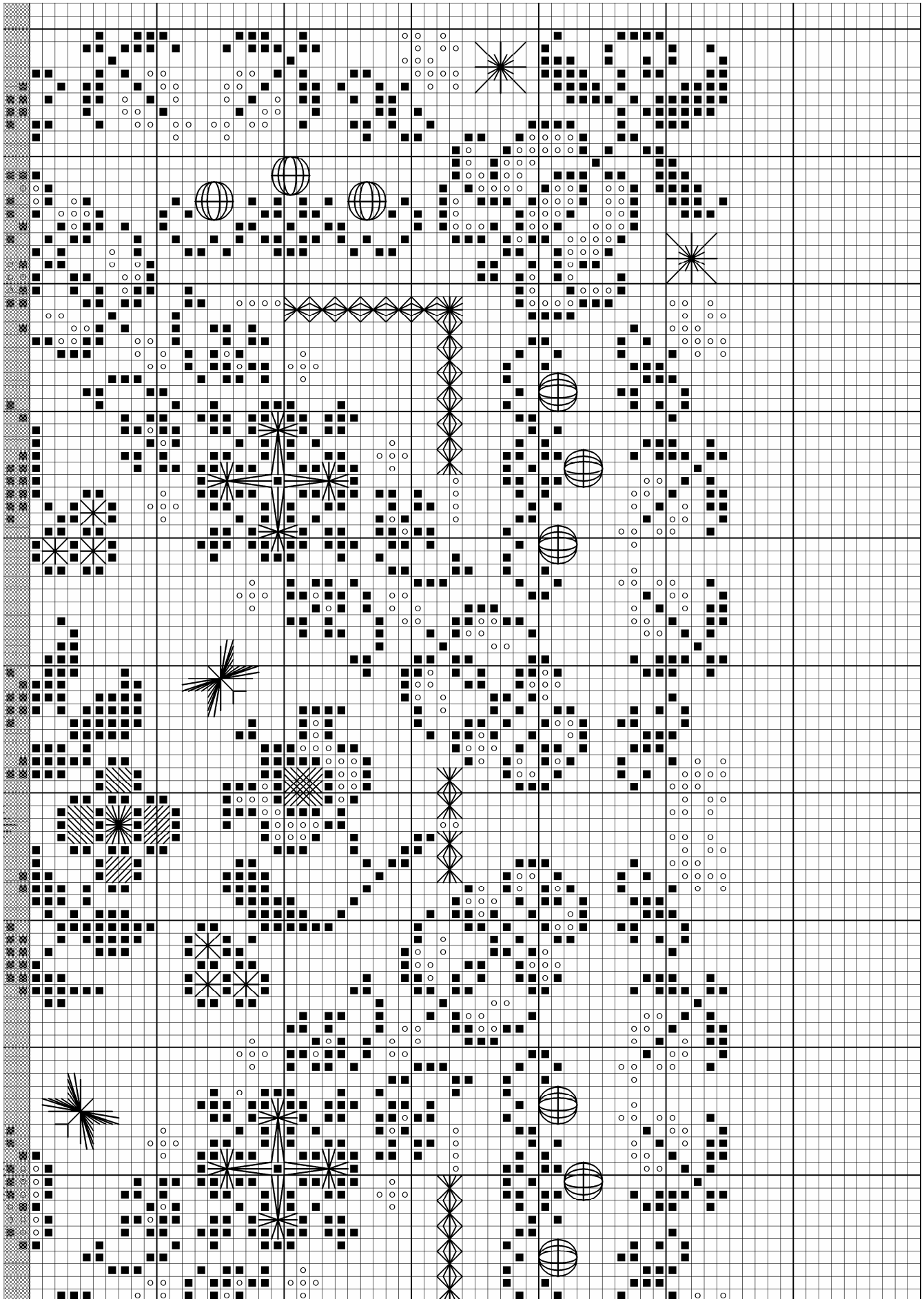
Diagonal Satin

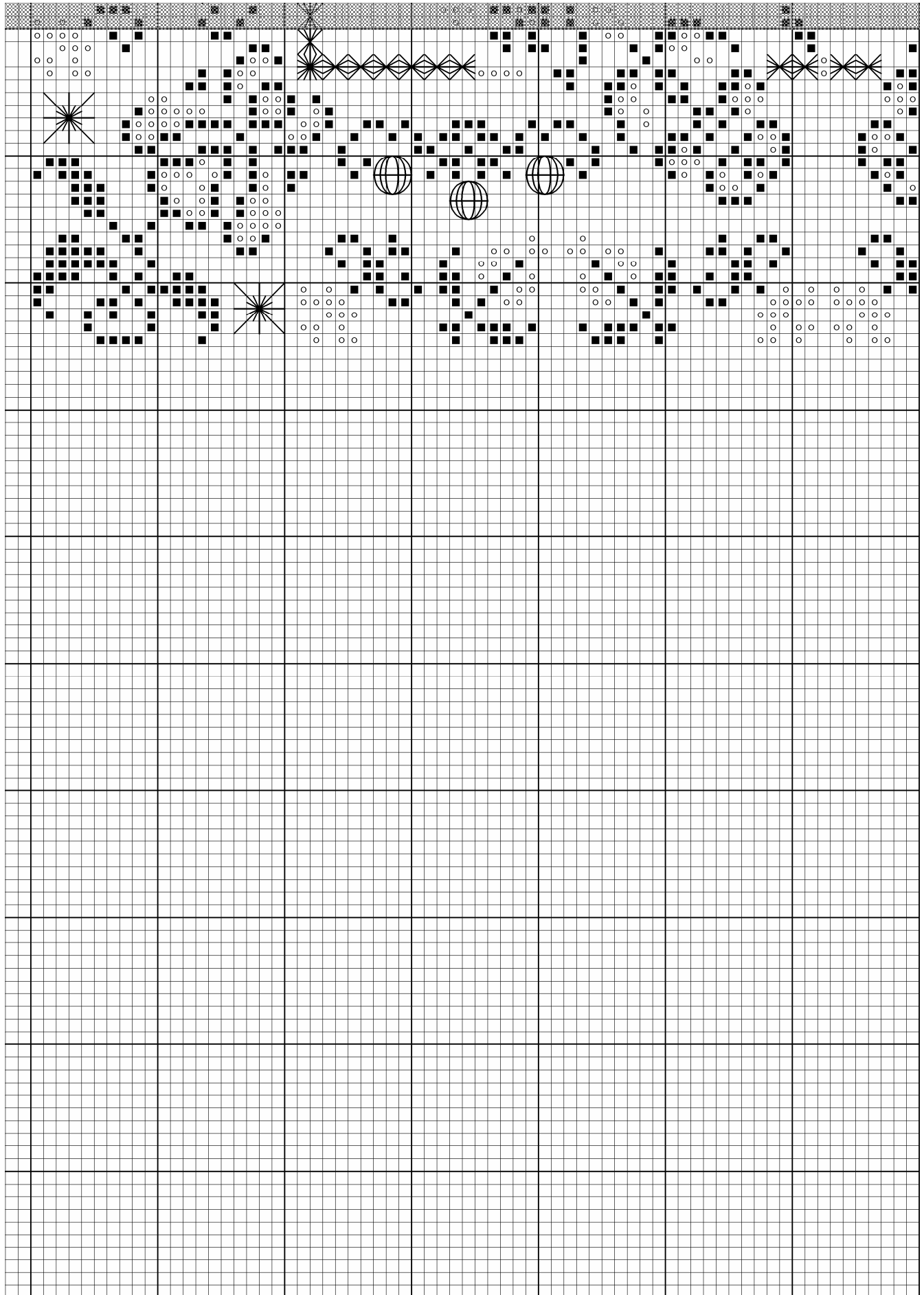
Flower Eyelet

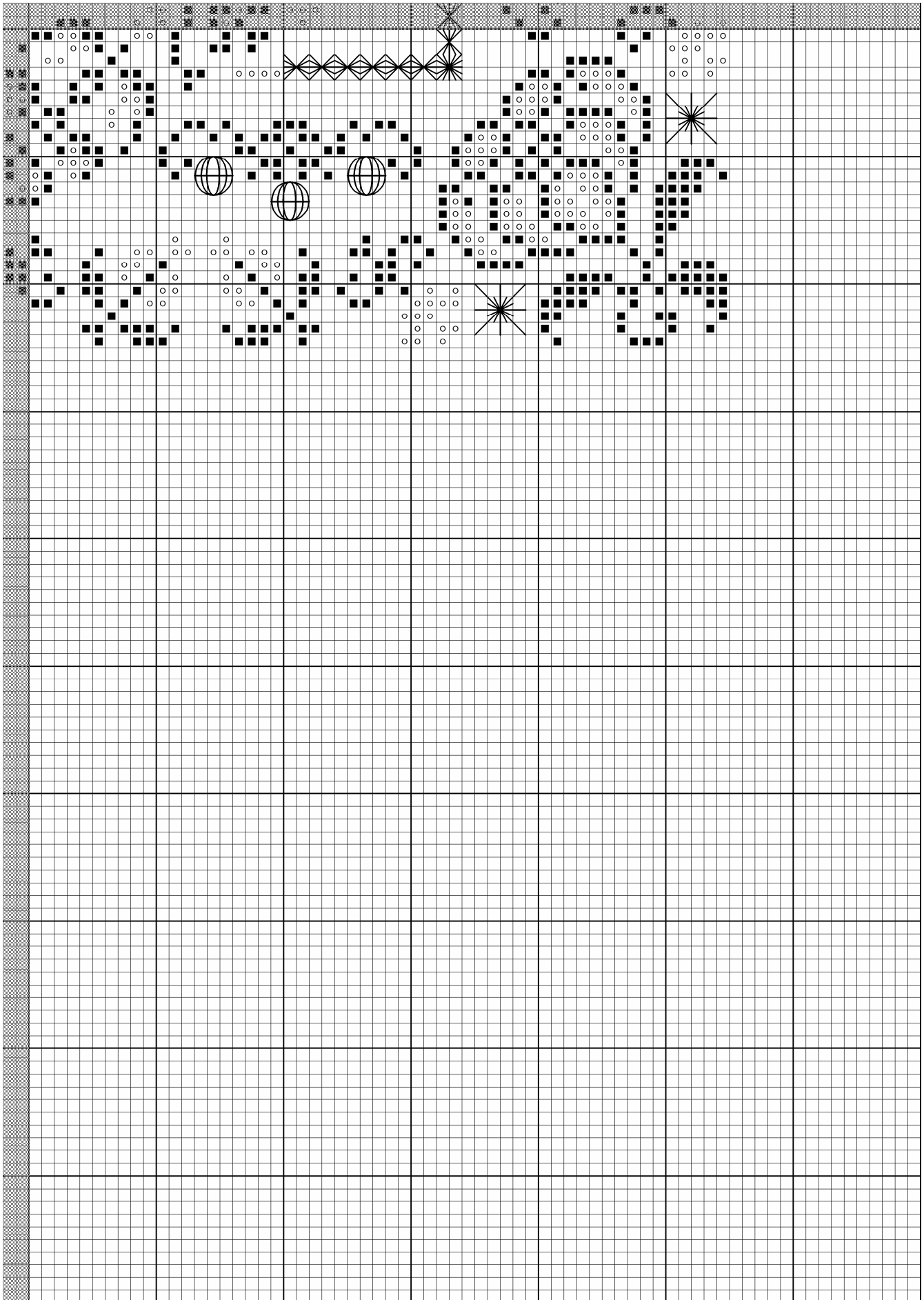
Butterfly Eyelet











Stitch Instructions

The following diagrams show how to work all speciality stitches in the design. Each square in these diagrams represents **one** fabric thread. Bring your needle up to the right side of the fabric at the odd numbers, and go back down at the even numbers. Unless otherwise stated, use 1 strand of floss to work the speciality stitches.

Work the following stitches in the following areas:

Outer Border—Flower Eyelet, Large Queen stitch.

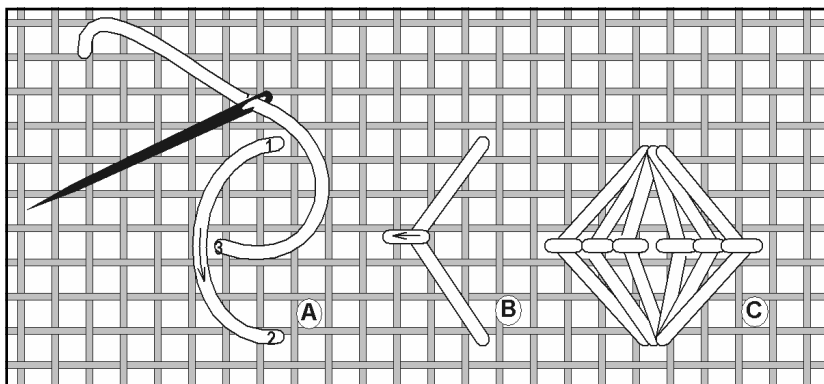
Inner Border—Rhodes Square, partial Rhodes Square.

Diagonal Band—Eyelet cross.

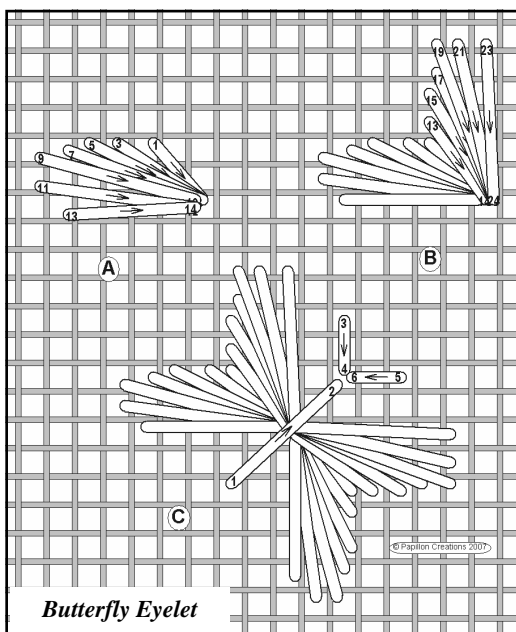
Inner Flowers—Partial Norwich stitch, Smyrna Cross stitch, butterfly eyelets.

Central flowers—Diagonal Satin Stitch, Rhodes oblong.

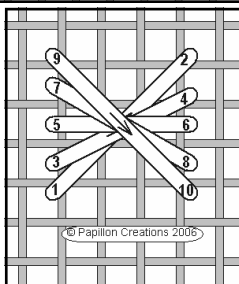
Centre—Partial Norwich stitch, triple woven cross flower.



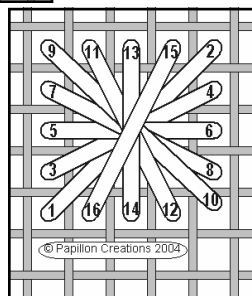
Large queen stitch



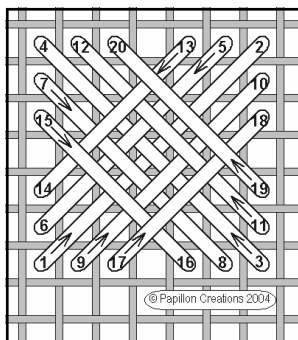
Butterfly Eyelet



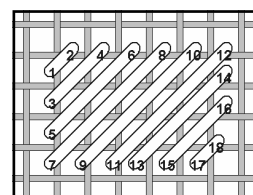
Partial Rhodes Square



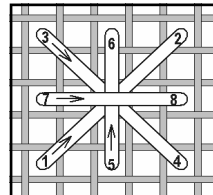
Rhodes Square



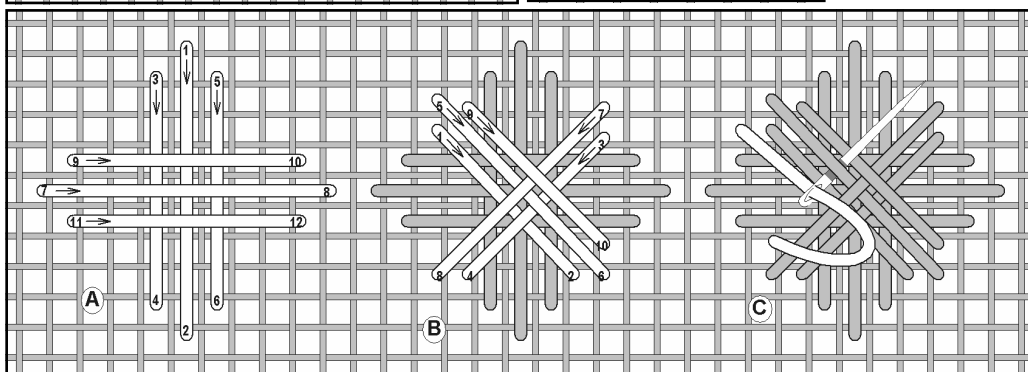
← Partial Norwich stitch



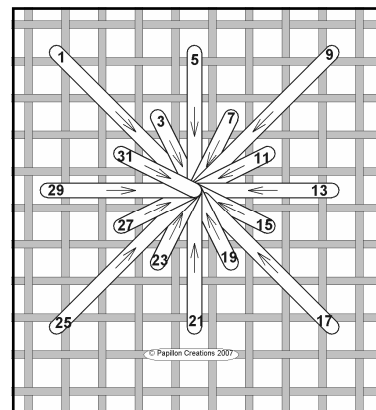
Diagonal Satin stitch



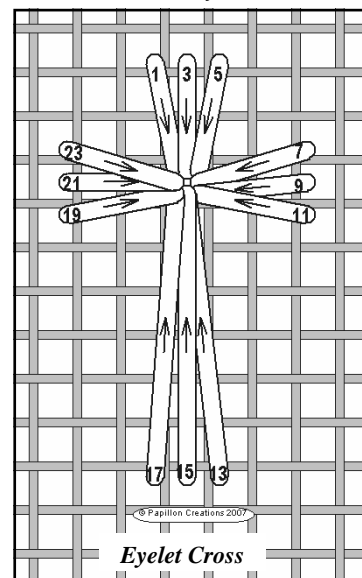
Smyrna Cross



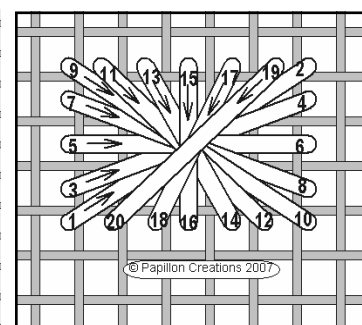
Triple woven Cross flower



Flower Eyelet



Eyelet Cross



Rhodes Oblong