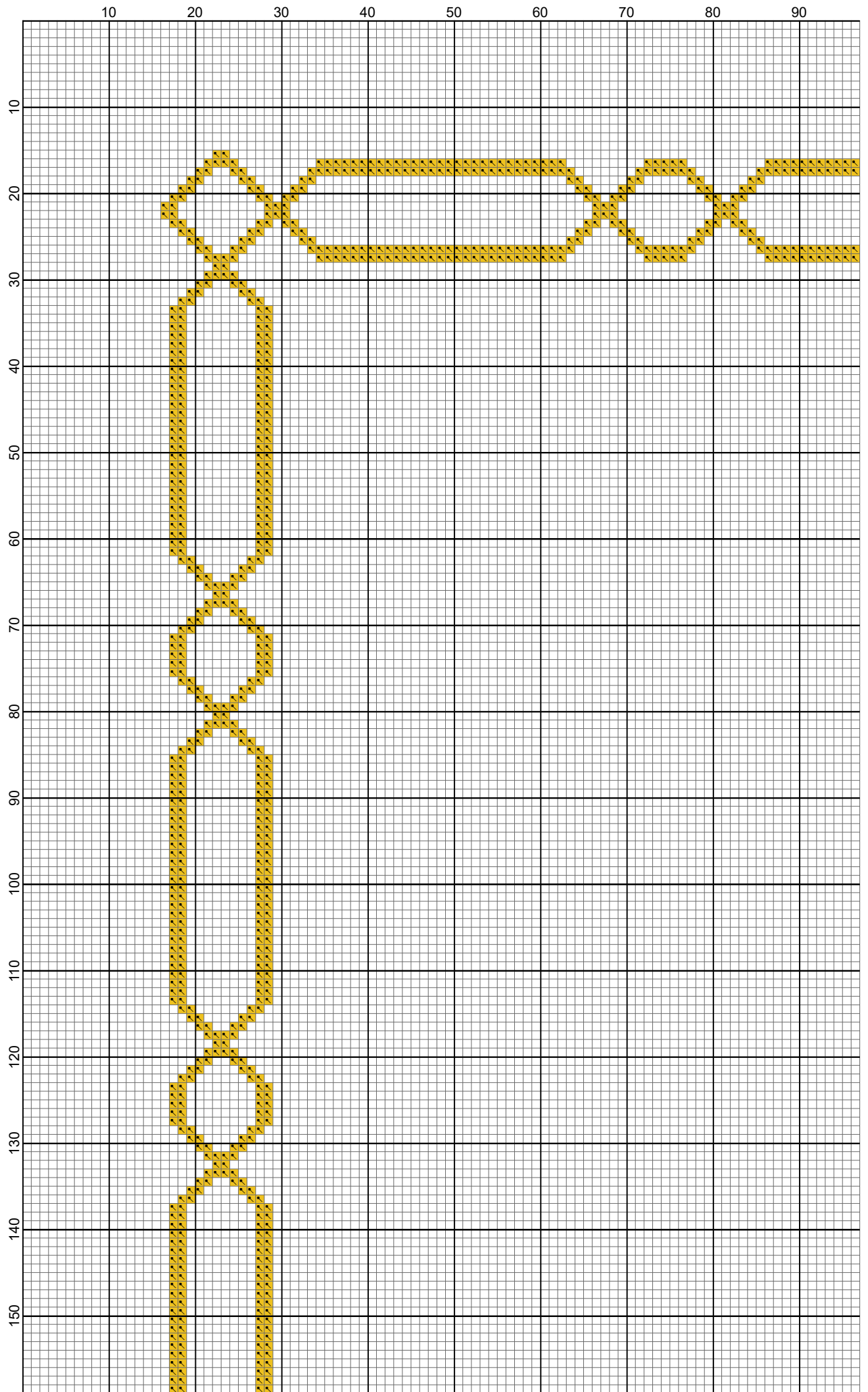
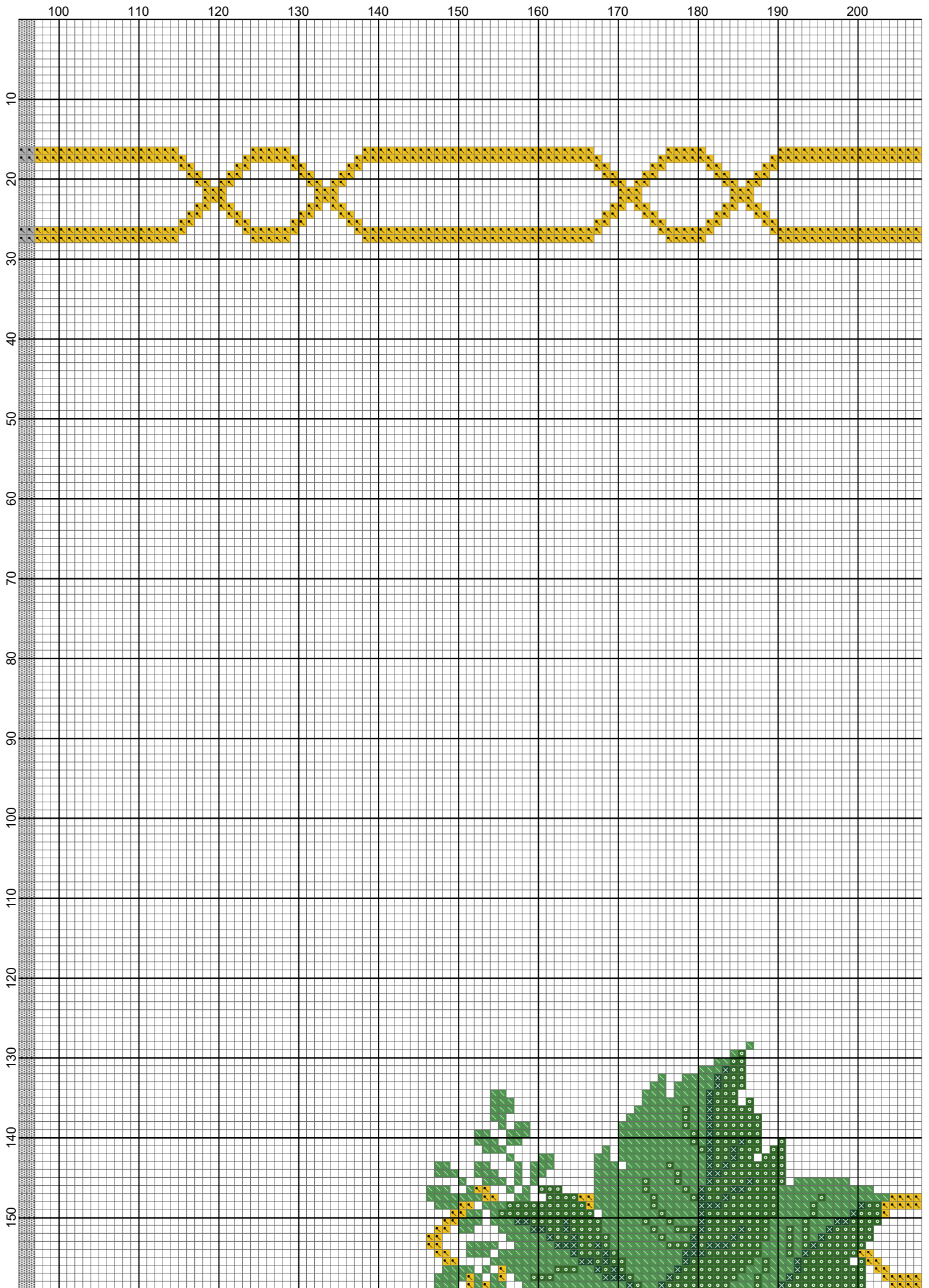


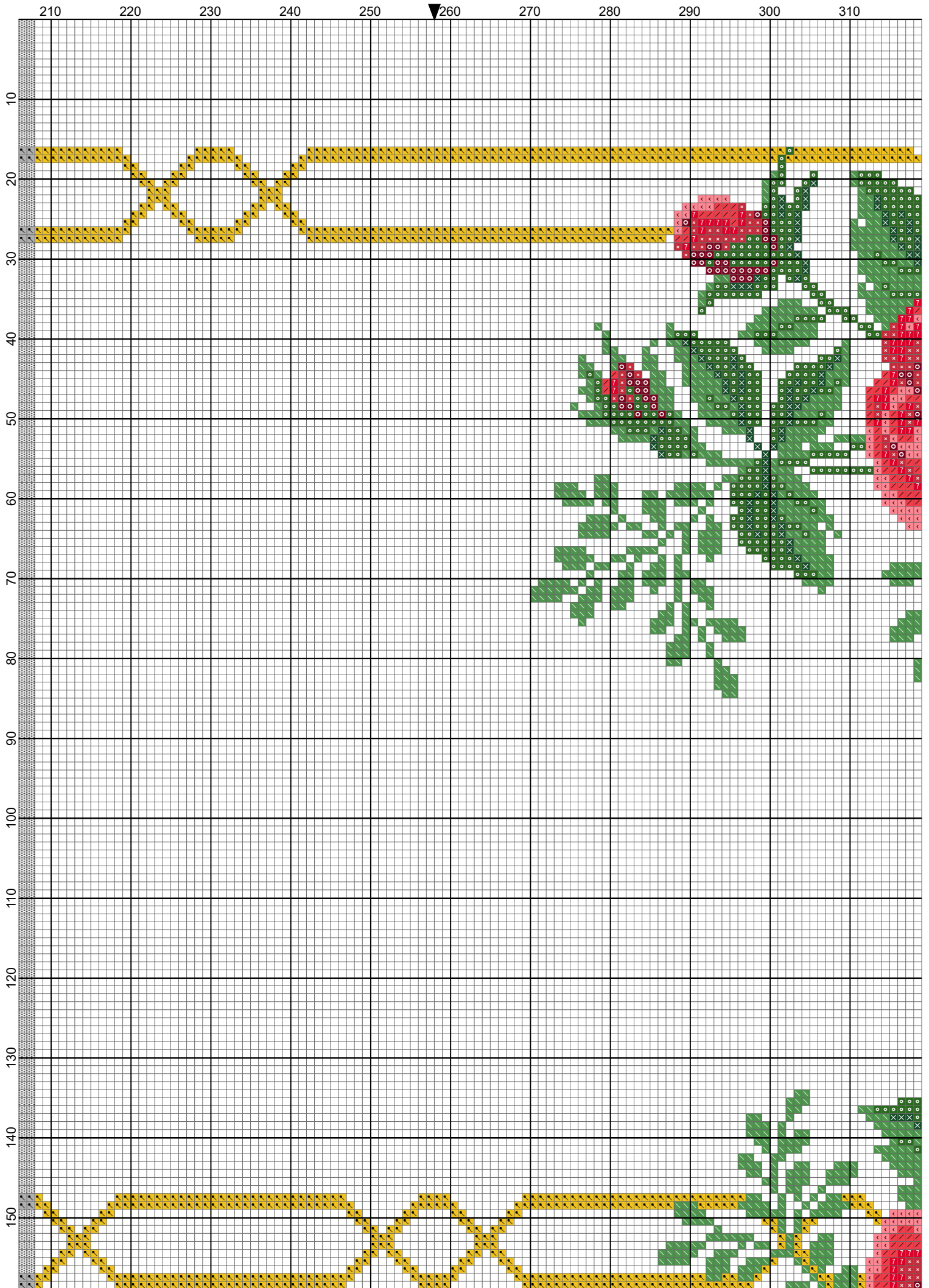
# Tovaglia rose rosse quadrata- modifiche (Natalia) by

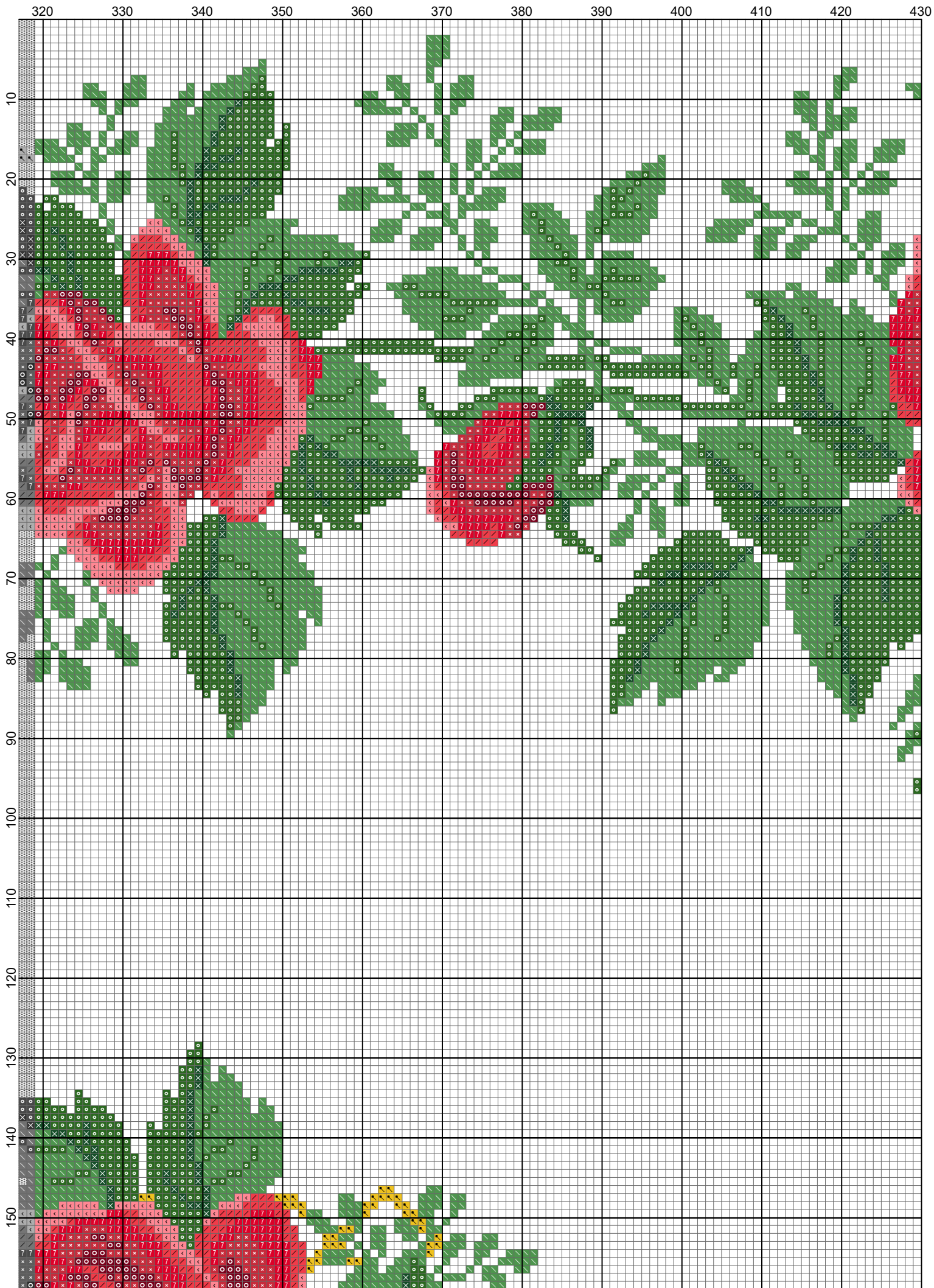
## Legend:

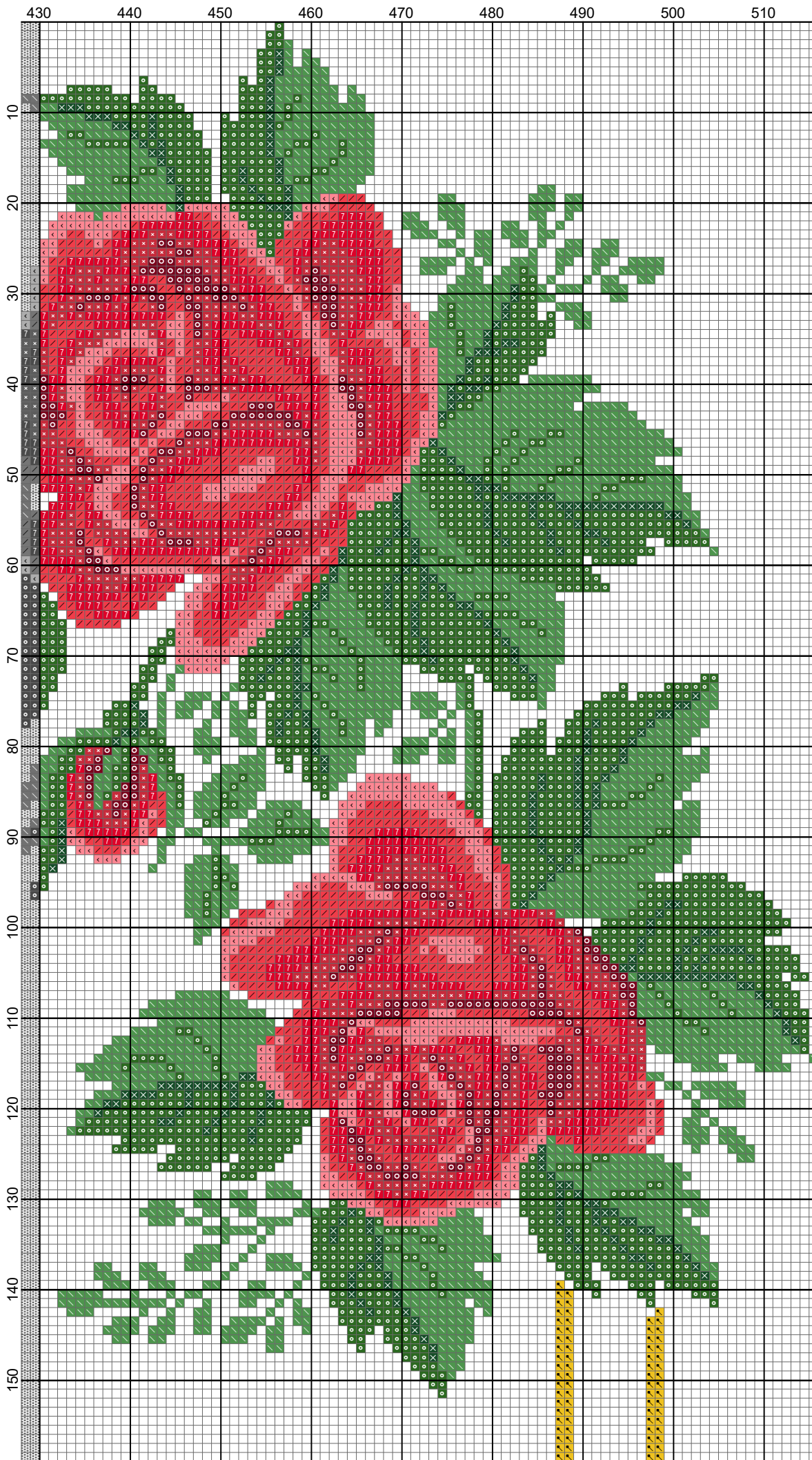
- DMC-890
- DMC-3706
- DMC-367
- DMC-986
- DMC-321
- DMC-666
- DMC-814
- DMC-3801
- DMC-728



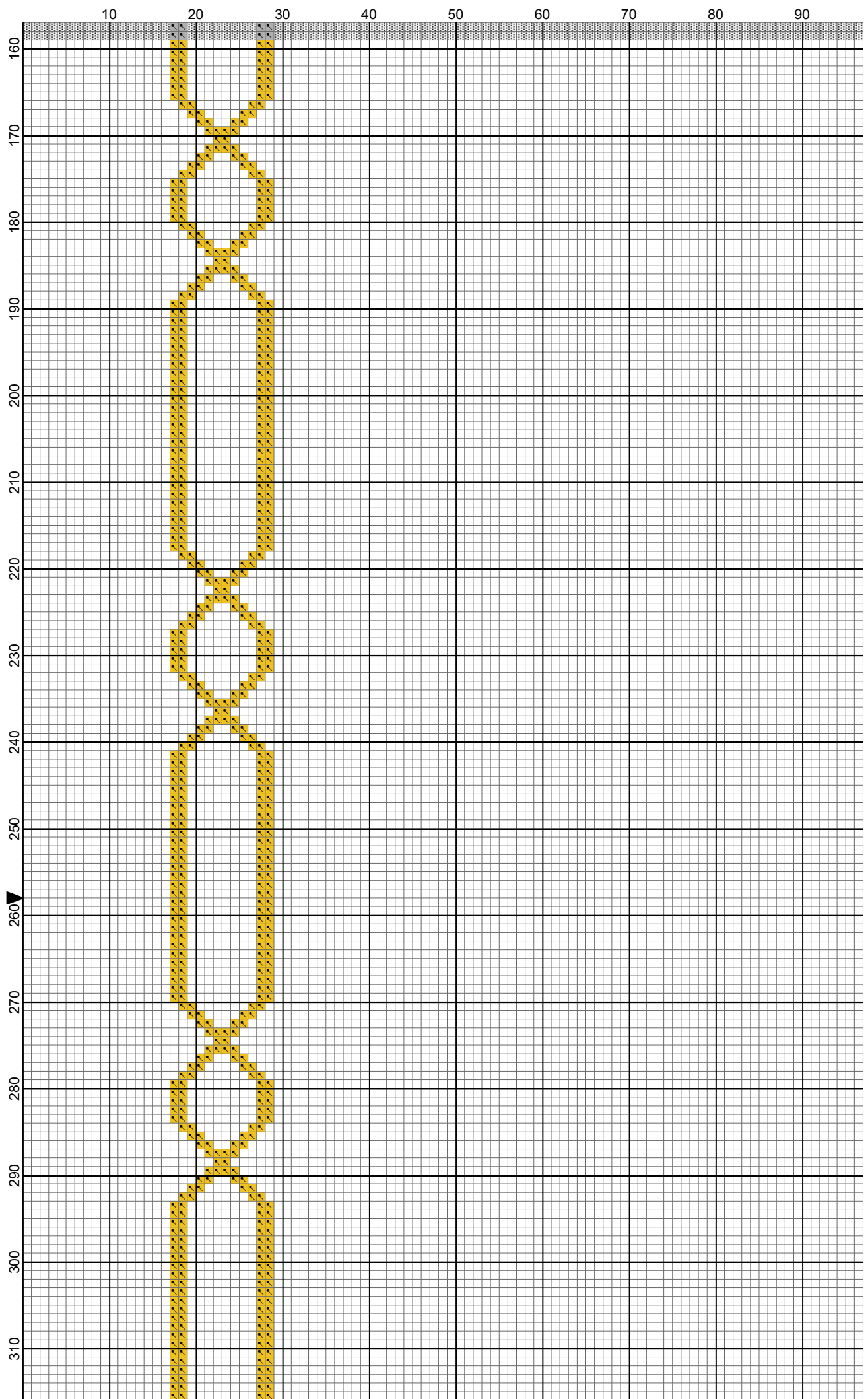


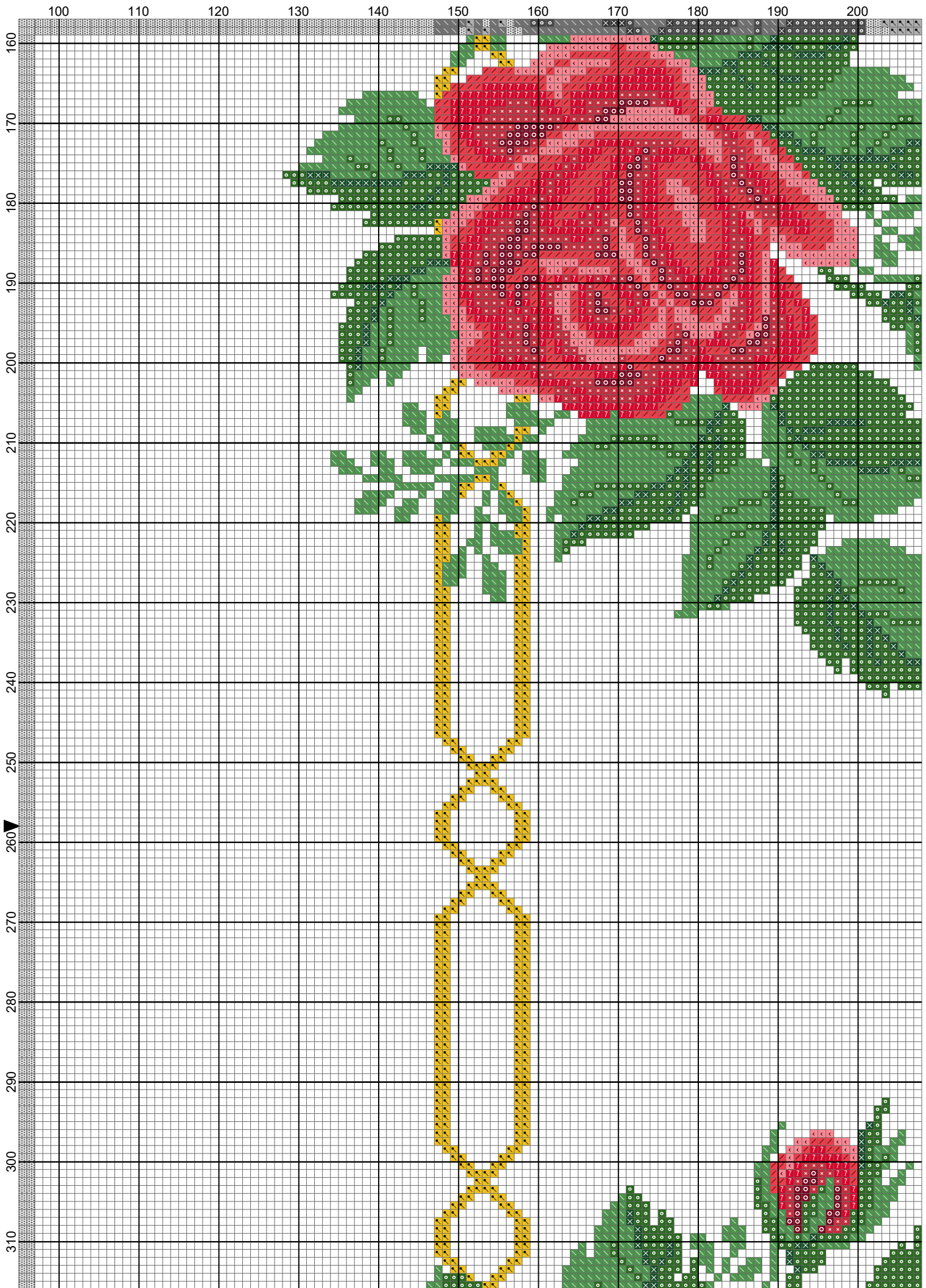


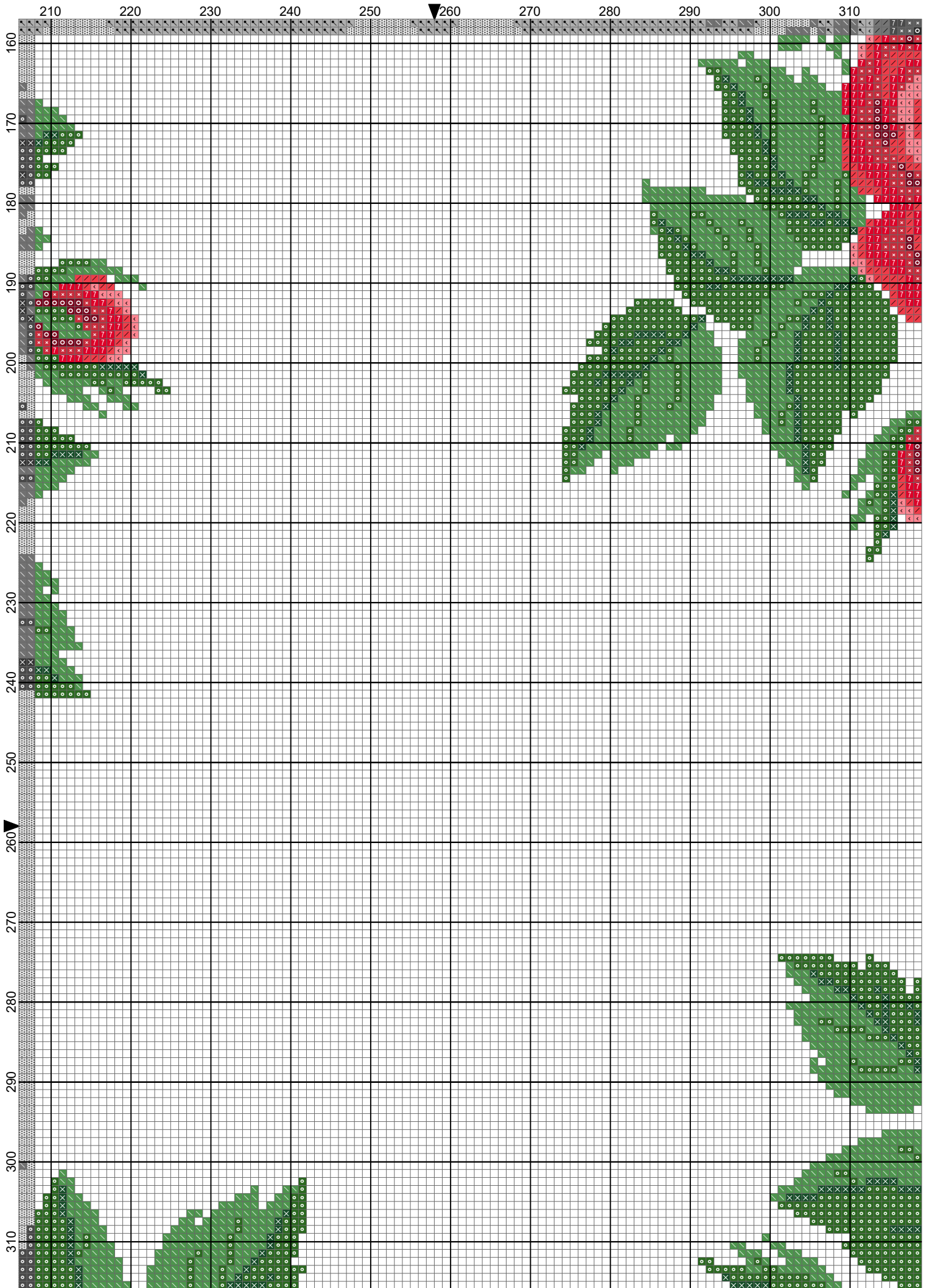




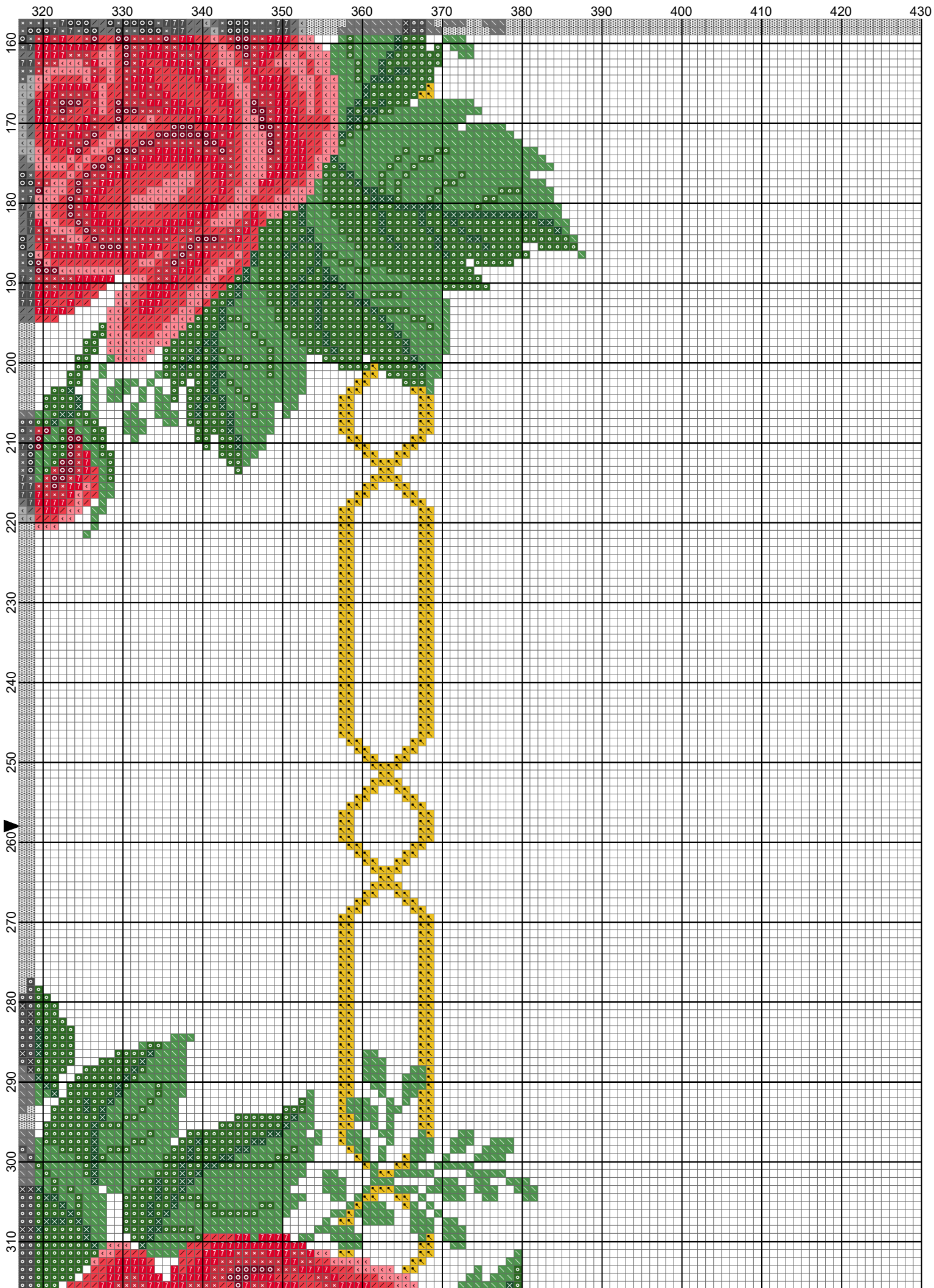




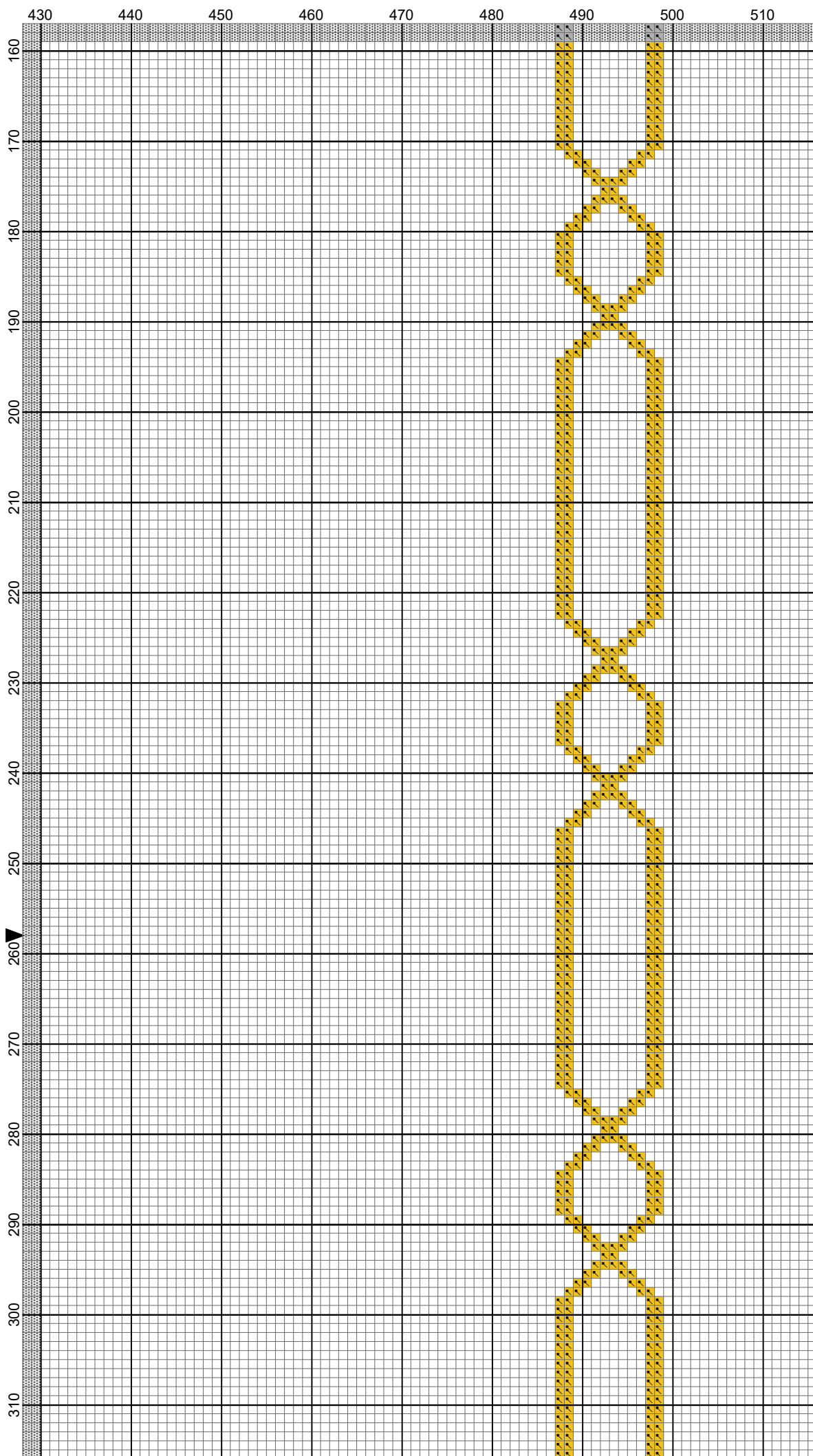


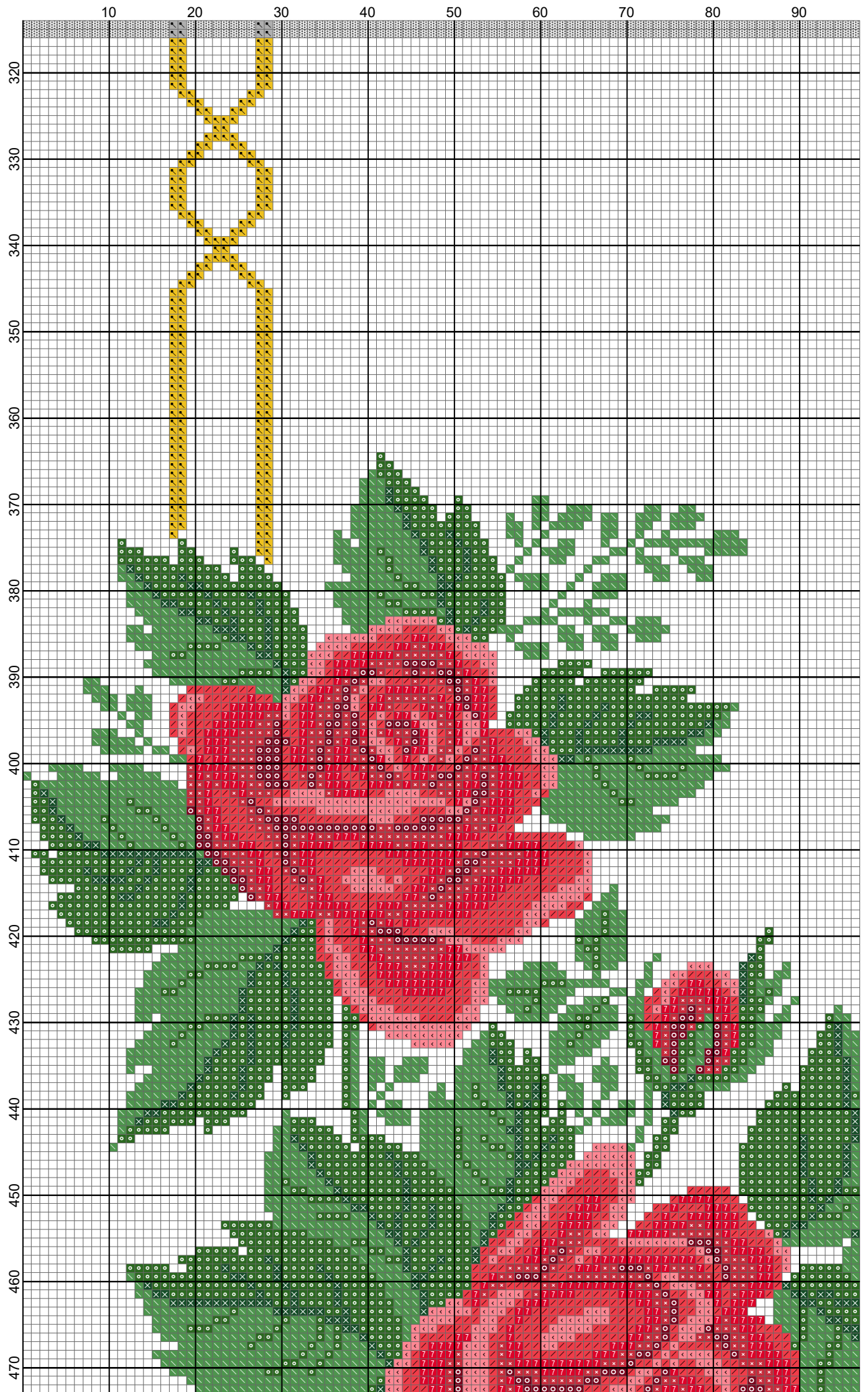


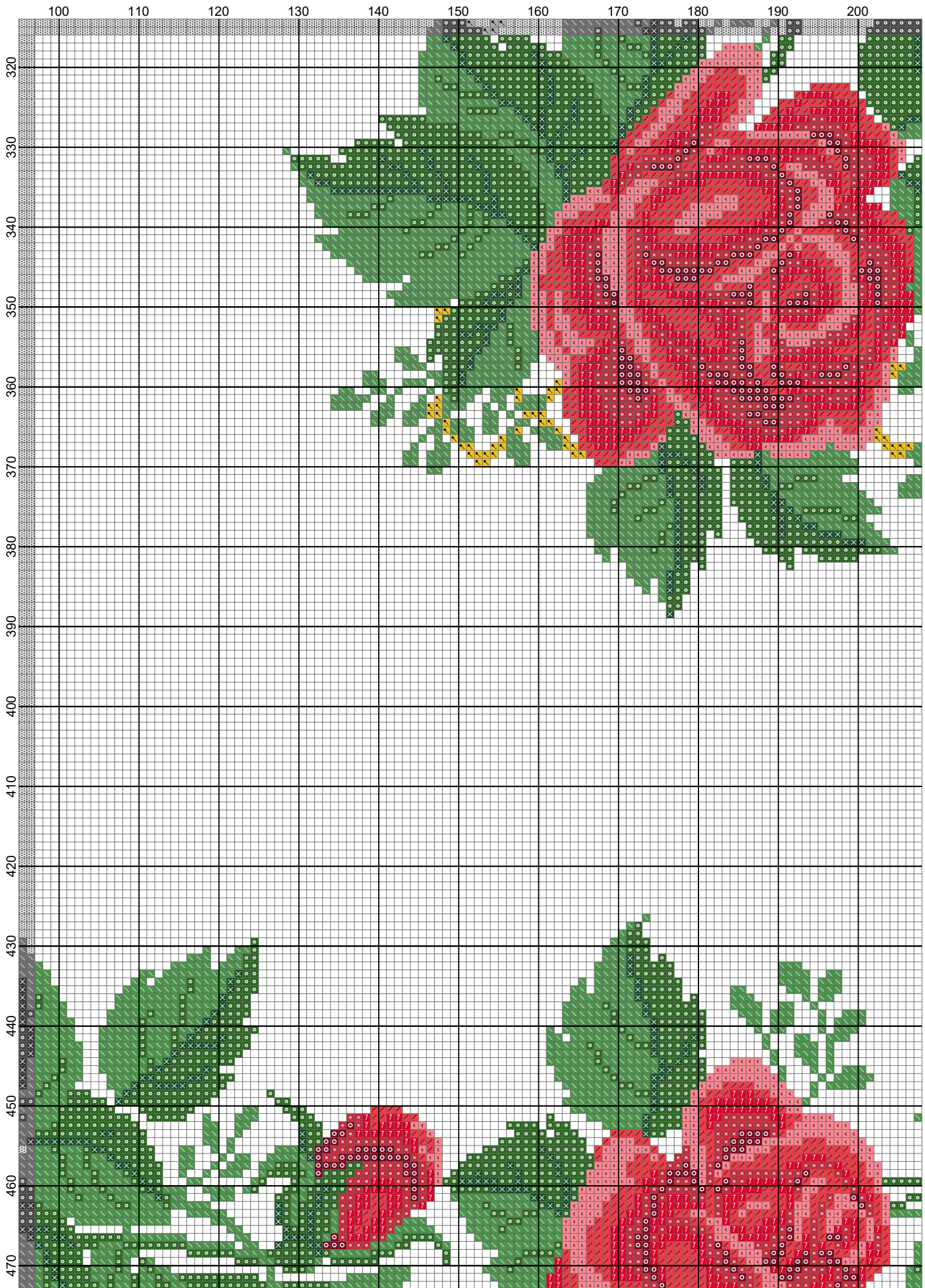




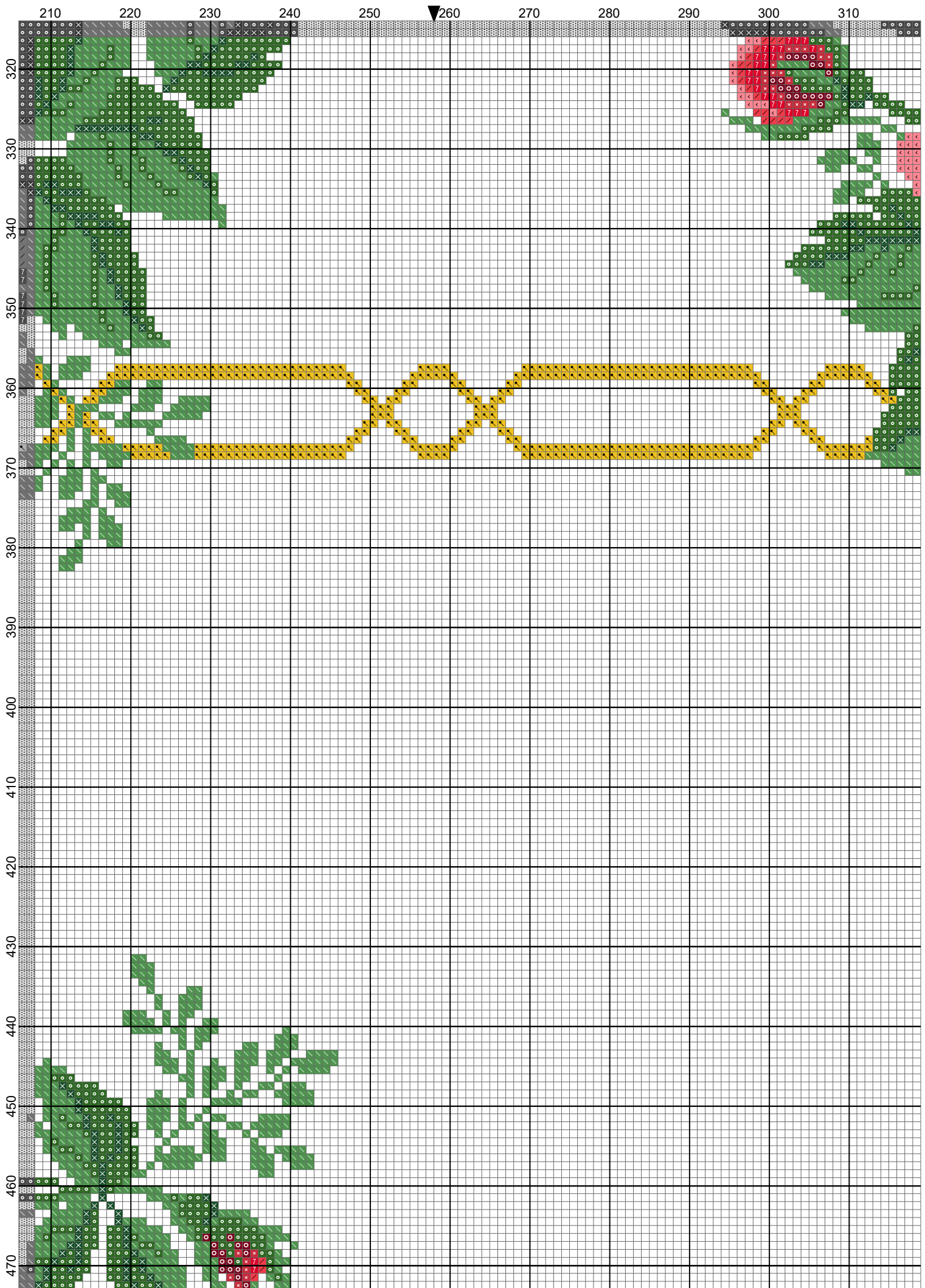
Tovaglia rose rosse quadrata- modifiche (Natalia) by



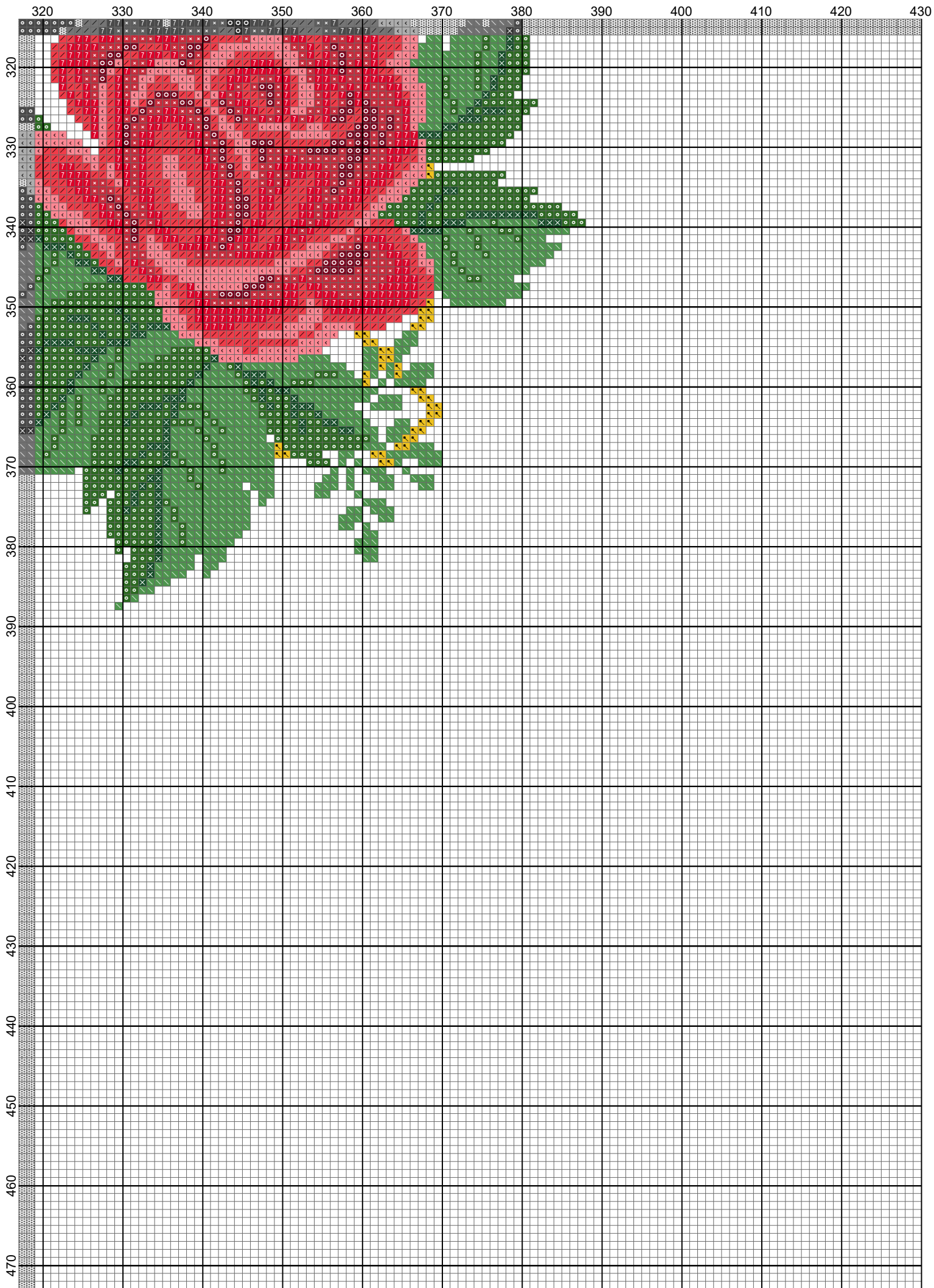


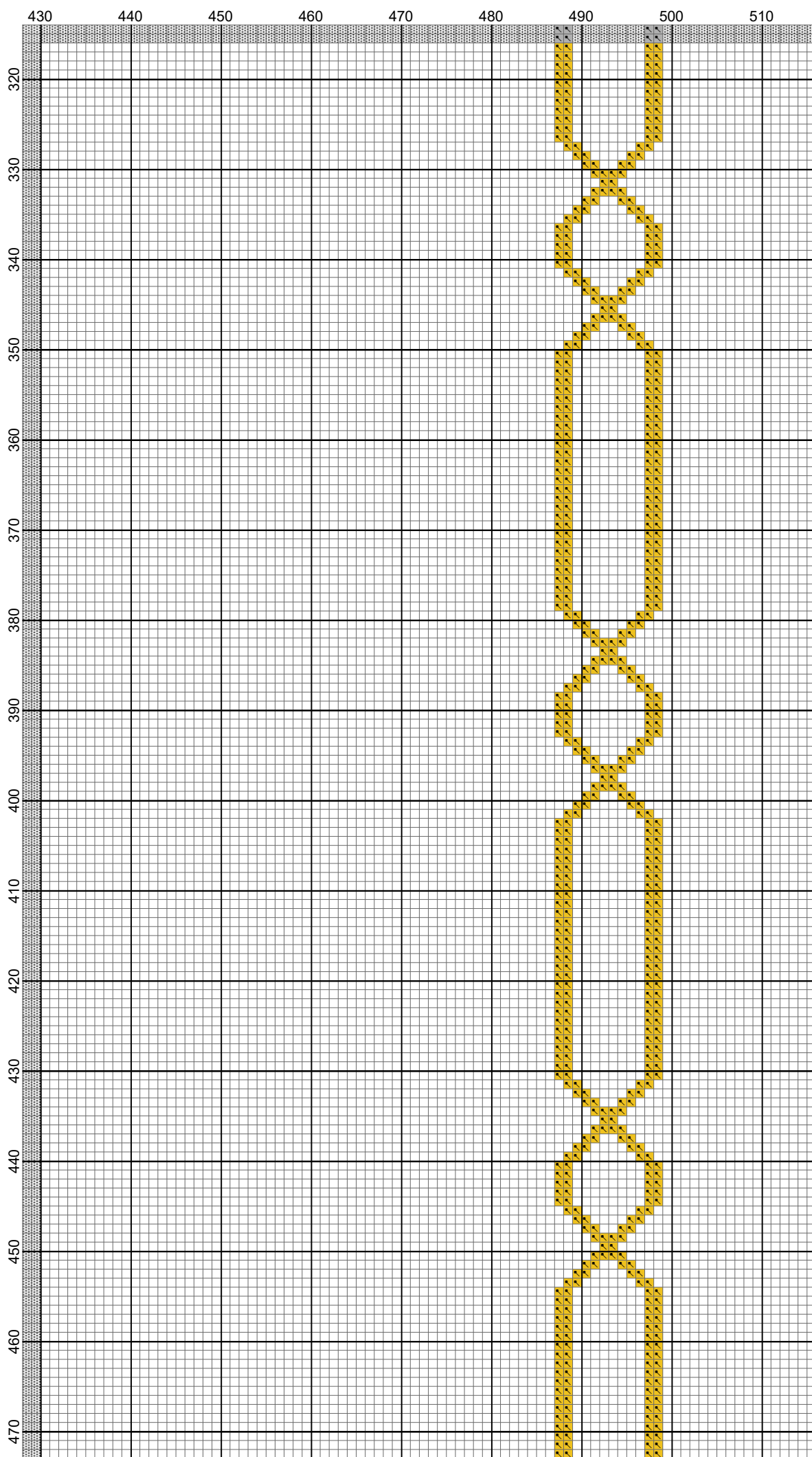


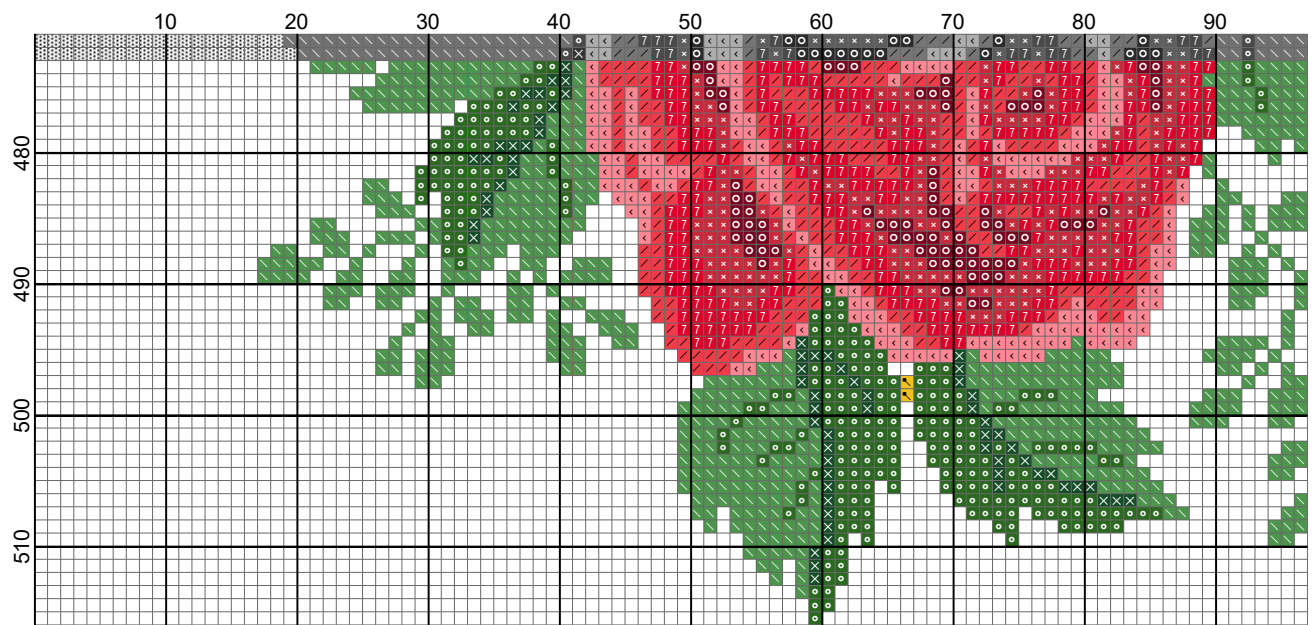


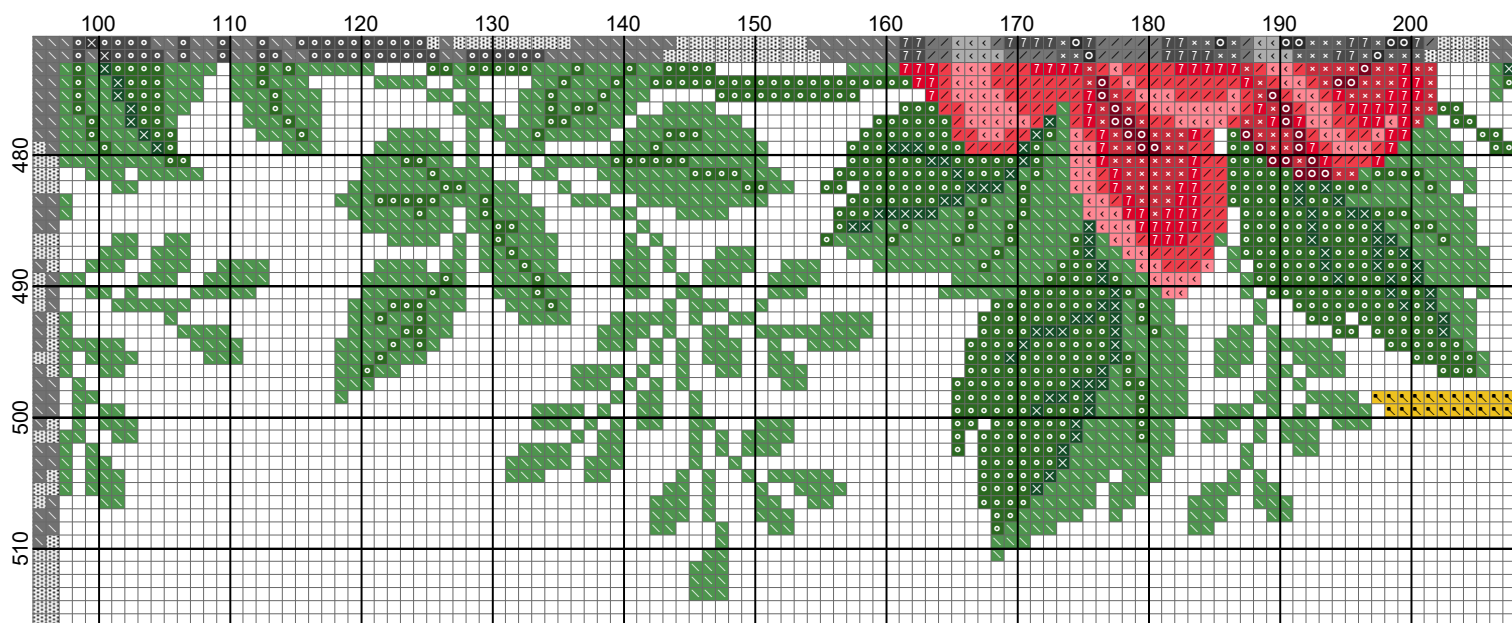


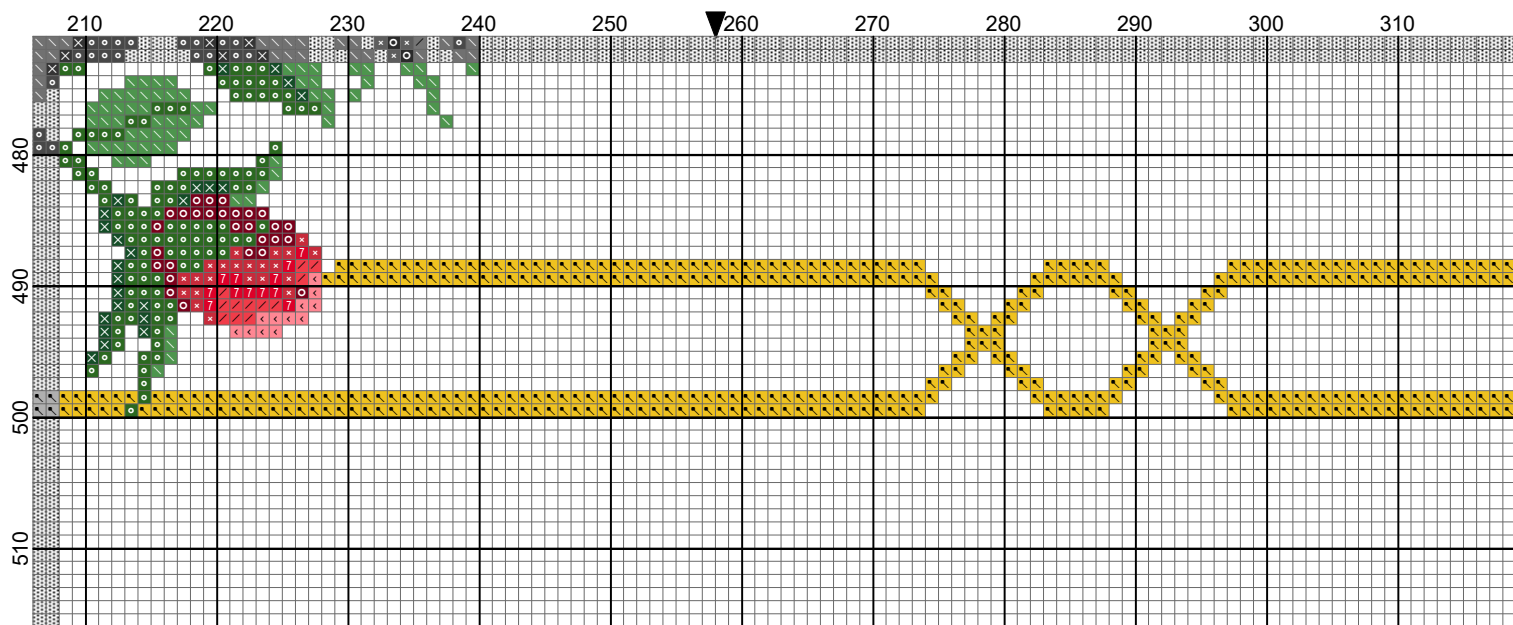




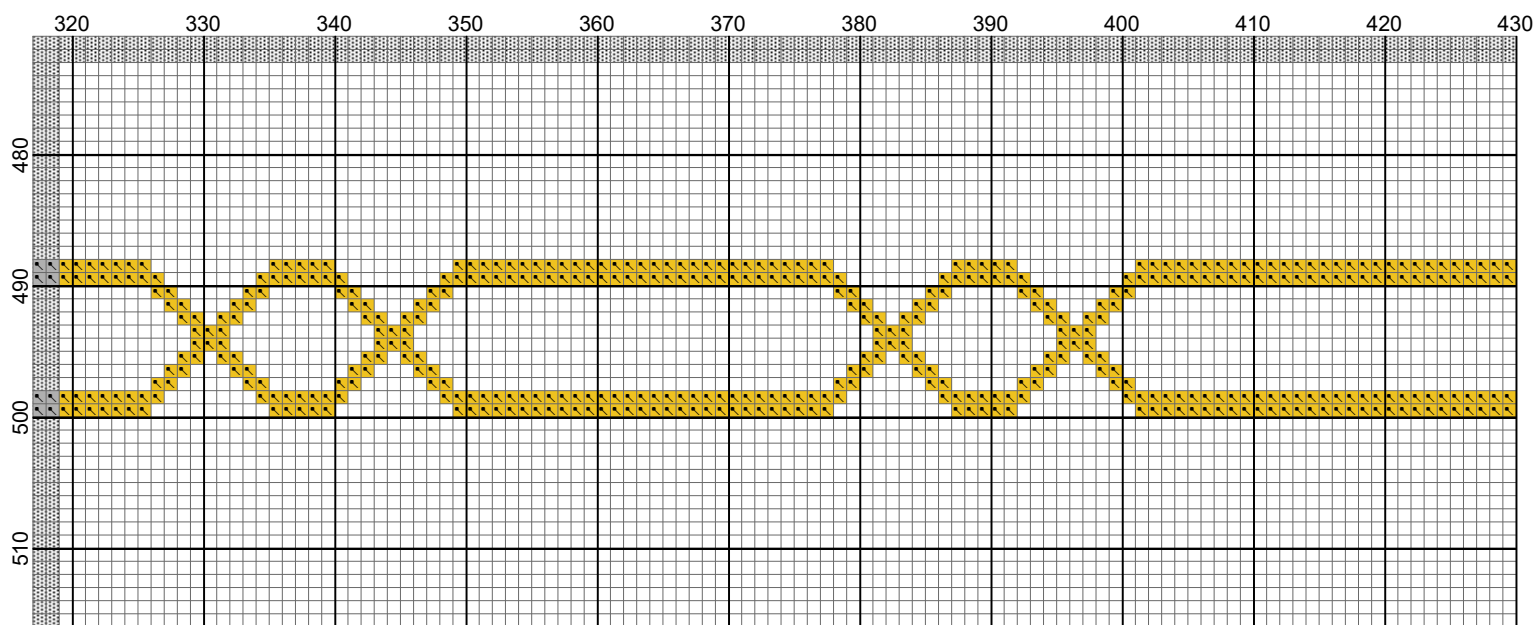




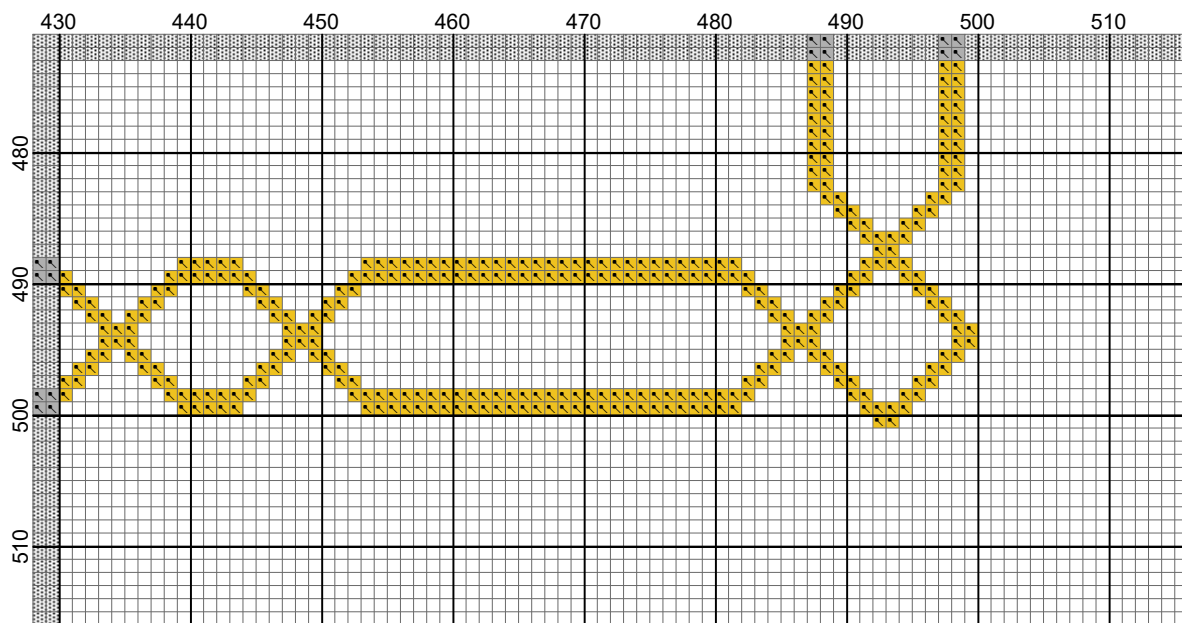








Tovaglia rose rosse quadrata- modifiche (Natalia) by



# Tovaglia rose rosse quadrata- modifiche (Natalia)

---

**Grid Size:** 516W x 516H

**Design Area:** 36,86" x 36,86" (516 x 516 stitches)

## Legend:

	[2]	DMC-890	ANC-862	Pistachio Green-UL DK	(2767 stitches, 1,1 skeins)
	[2]	DMC-3706	ANC-27	Melon-MD	(3632 stitches, 1,5 skeins)
	[2]	DMC-367	ANC-217	Pistachio Green-DK	(16870 stitches, 6,8 skeins)
	[2]	DMC-986	ANC-246	Forest Green-VY DK	(12689 stitches, 5,1 skeins)
	[2]	DMC-321	ANC-47	Christmas Red	(3224 stitches, 1,3 skeins)
	[2]	DMC-666	ANC-46	Christmas Red-BRT	(4328 stitches, 1,7 skeins)
	[2]	DMC-814	ANC-45	Garnet-DK	(1608 stitches, 0,7 skeins)
	[2]	DMC-3801	ANC-1098	Christmas Red-LT	(5054 stitches, 2,0 skeins)
	[2]	DMC-728	ANC-306	golden yellow	(6761 stitches, 2,7 skeins)