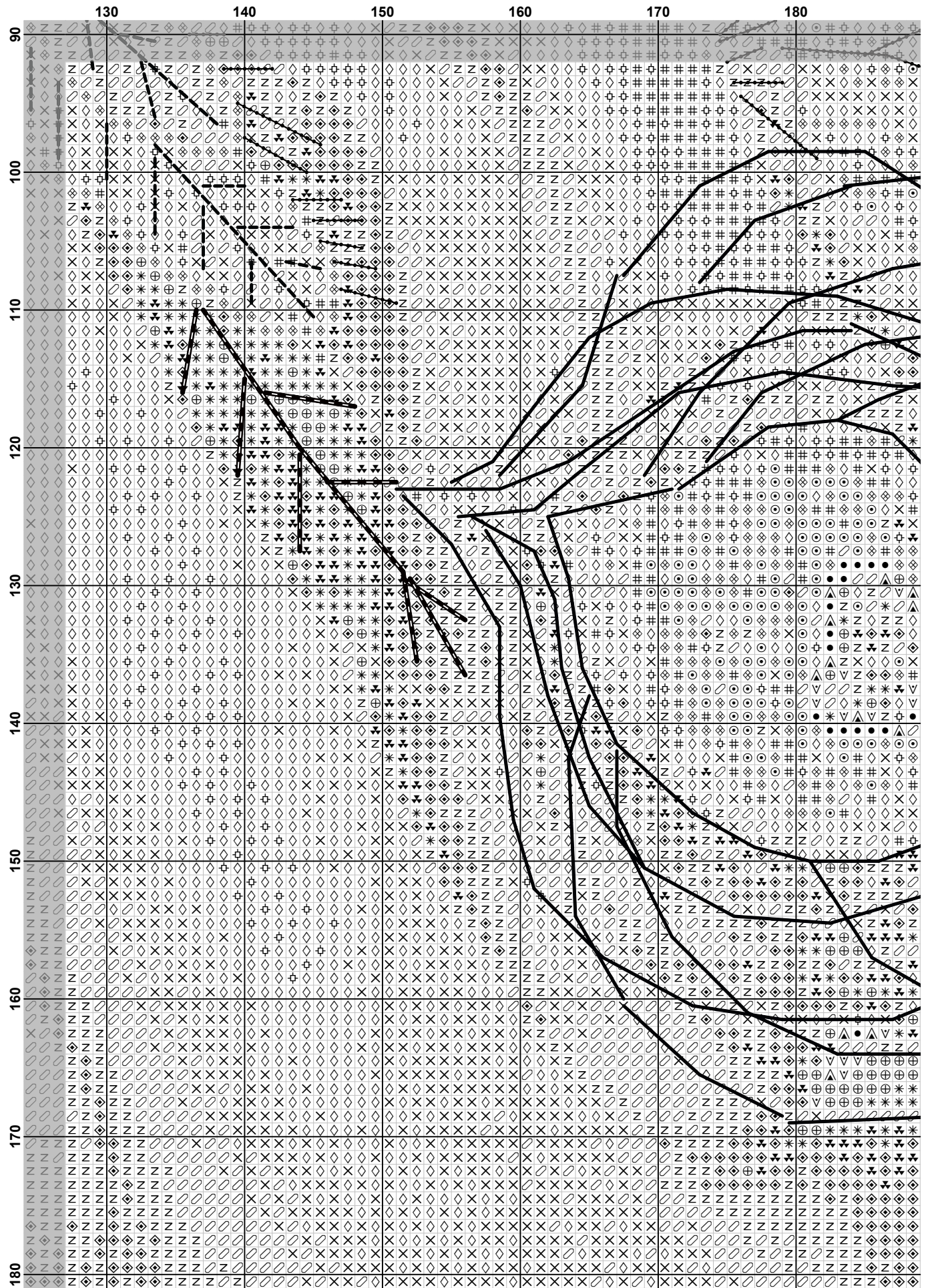
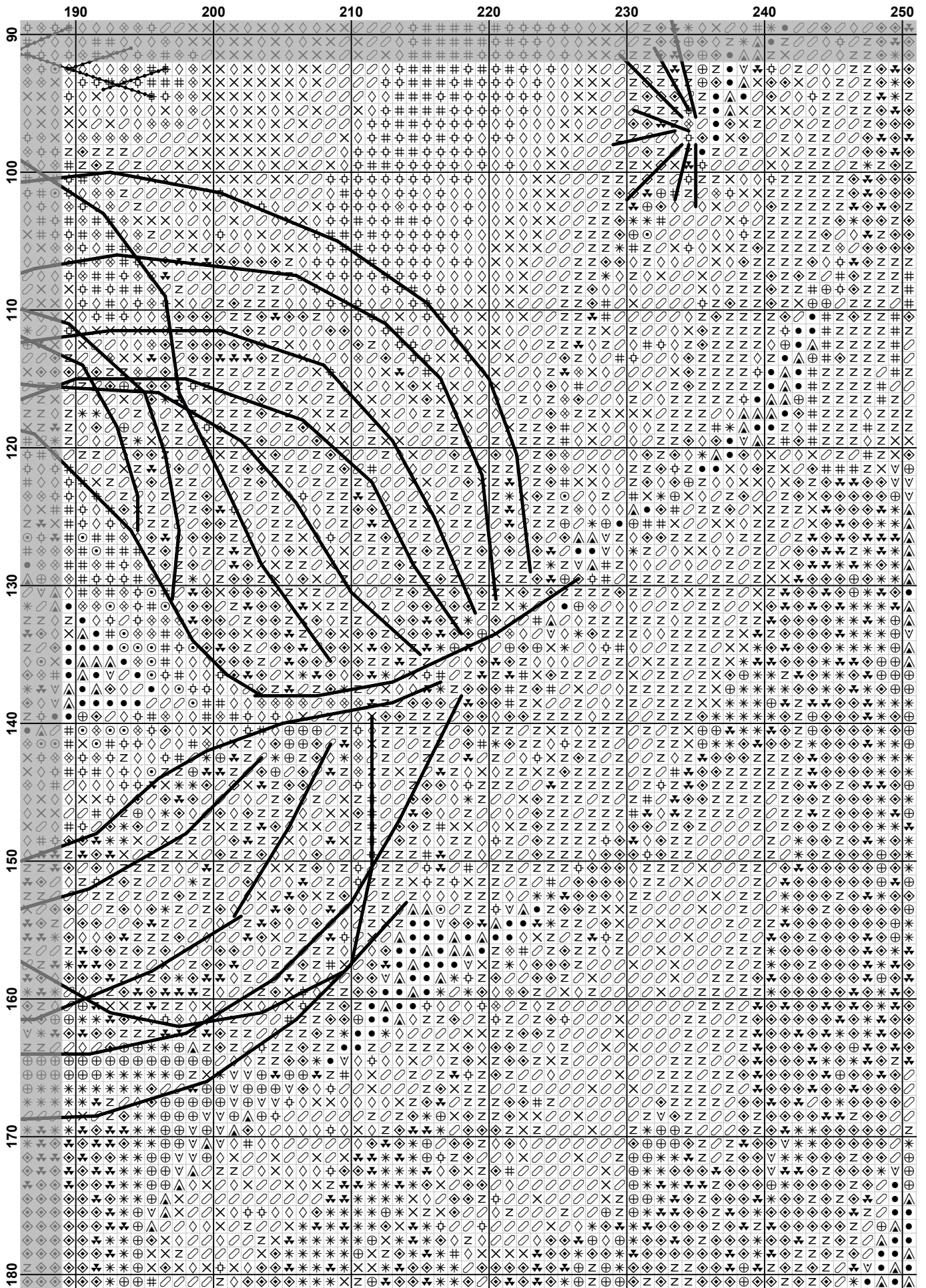
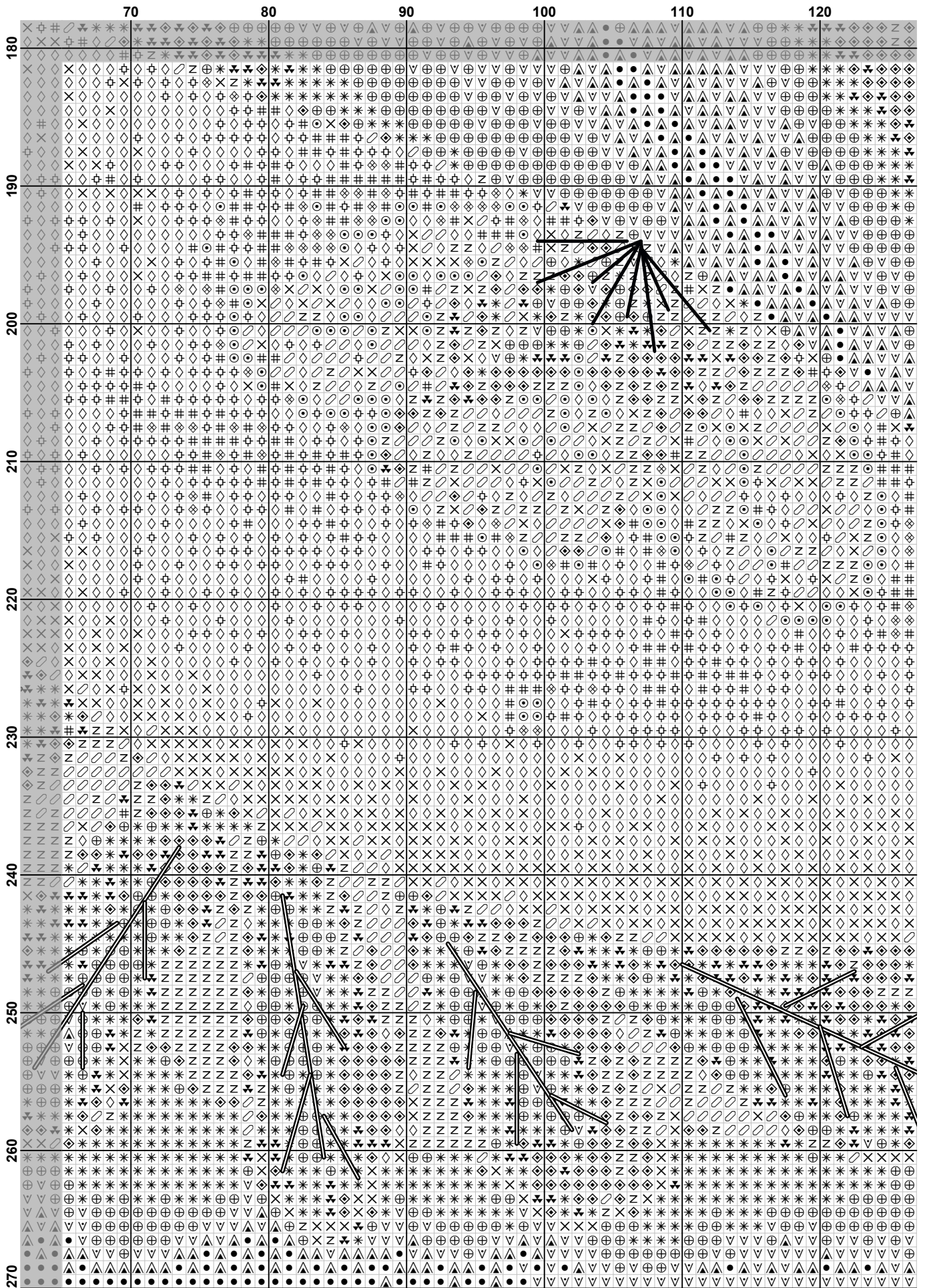


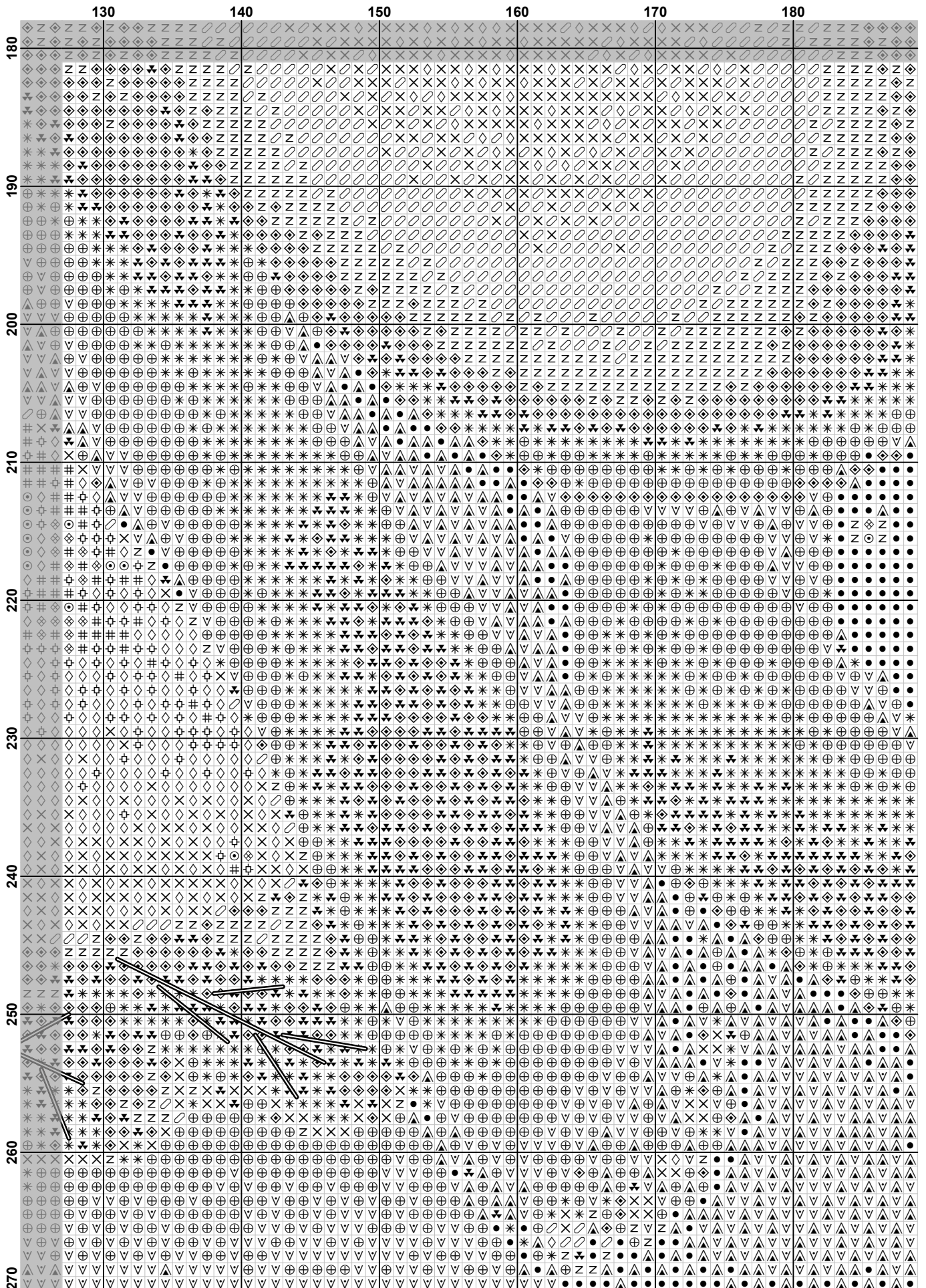
	70	80	90	100	110	120
90	◇	◇	◇	◇	◇	◇
100	◇	◇	◇	◇	◇	◇
110	◇	◇	◇	◇	◇	◇
120	◇	◇	◇	◇	◇	◇
130	◇	◇	◇	◇	◇	◇
140	◇	◇	◇	◇	◇	◇
150	◇	◇	◇	◇	◇	◇
160	◇	◇	◇	◇	◇	◇
170	◇	◇	◇	◇	◇	◇
180	◇	◇	◇	◇	◇	◇

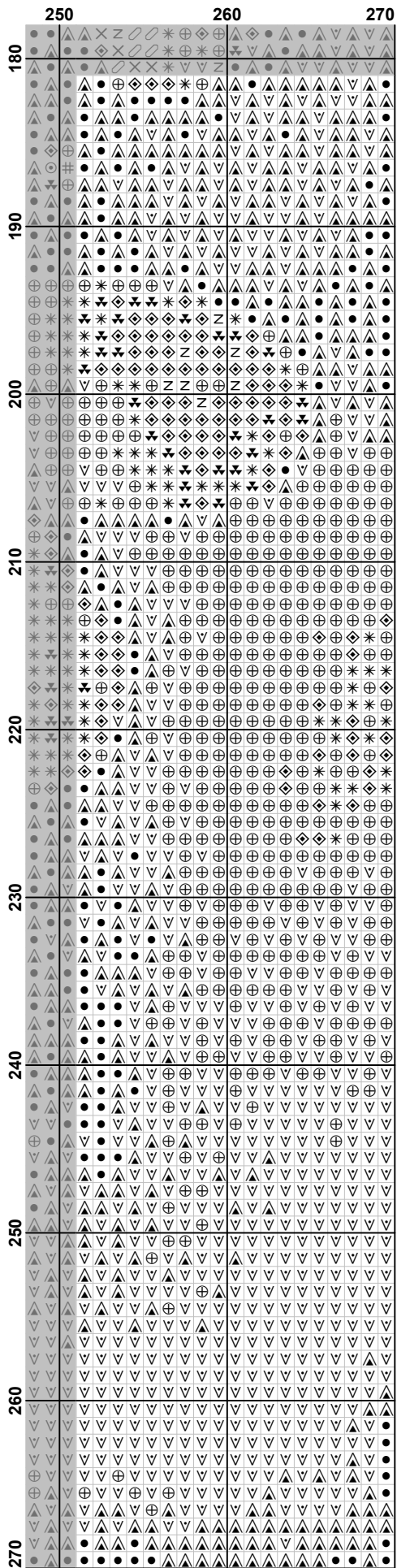





















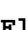












Fabric: Aida 14, White
 270w X 270h Stitches
Size: 14 Count, 48.99w X 48.99h cm

Floss Used for Full Stitches:

Symbol	Strands	Type	Number	Color
 ●	2	DMC	310	Black
 ▼	2	DMC	433	Brown-MD
 ◆	2	DMC	434	Brown-LT
 Z	2	DMC	435	Brown-VY LT
 ∅	2	DMC	436	Tan
 X	2	DMC	437	Tan-LT
 *	2	DMC	801	Coffee Brown-DK
 ⊕	2	DMC	898	Coffee Brown-VY DK
 v	2	DMC	938	Coffee Brown-UL DK
 †	2	DMC	945	Tawny
 #	2	DMC	951	Tawny-LT
 ▲	2	DMC	3371	Black Brown
 ◆	2	DMC	3770	Tawny-VY LT
 ⊙	2	DMC	3865	Winter White
 ◇	1	DMC	437	Tan-LT
 ◇	1	DMC	945	Tawny

Floss Used for Back Stitches:

Symbol	Strands	Type	Number	Color
 ———	1	DMC	436	Tan
 ———	1	DMC	437	Tan-LT
 ······	1	DMC	945	Tawny
 ······	1	DMC	951	Tawny-LT
 - - - - -	1	DMC	3770	Tawny-VY LT
 ———	1	DMC	3865	Winter White