

## Christmas Tree Napkins

Makes 4 - Finished Size 8 x 16"



**Fabric requirements:**

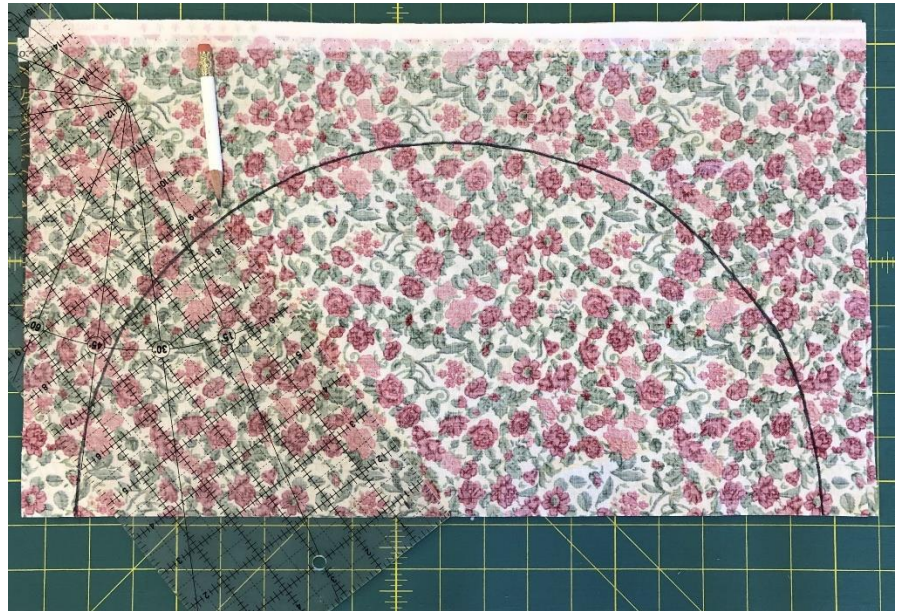
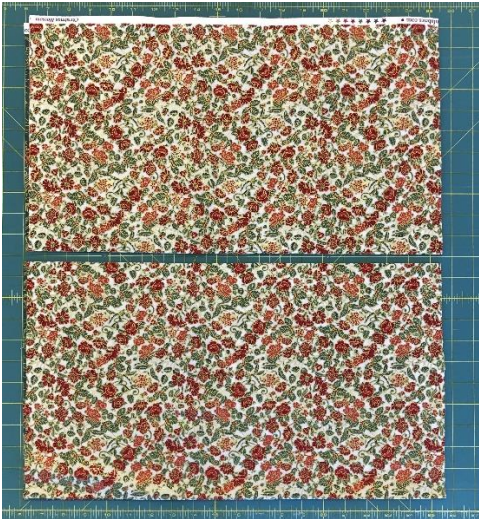
½ yard darker print for tree

½ yard lighter print for tree

1/8 for trunk (or 1 jelly roll strip)

Trunks: Cut 1 @ 2 1/2" WOF. Sub-cut 8 – 2 x 2 1/2". Stitch 2 of them right sides together around 3 sides leaving one of the 2 1/2" edges open. Clip seam allowances in corners close to stitching. Flip right side out. Press. Edge stitch around all 3 sides.

Trees: Cut 4 semi-circles with an 8 1/2" radius from each half yard as shown below – you will have 4 light and 4 dark. I like to draw on the reverse side of the fabric to make it easier to see the line.



Take a lighter semi-circle and measure 2" from one corner and place the open edge of the trunk along the raw curved edge of the semi-circle.



Place a darker semi-circle right side down on top of the lighter semi-circle. Stitch around the edges leaving a 6" opening in the straight edge.

Clip excess seam allowances in the corners close to the stitching. Flip right side out.

Flatten out and turn seam allowances in along the opening. Press. Edge stitch. Measure 5" along the straight edge from the corner farther away from the trunk. Draw a line and stitch along it.



Fold and press napkin along the stitch line. Then fan fold the top of the napkin as shown below. Repeat folding for the bottom half of the tree. Steam press very flat.



Optional step – stitch along all the fold lines to make it easier to re-fold after washing the napkin.

Check out a step by step tutorial for this quilt and all our other projects on **YouTube!**



JordanFabrics.com

[info@jordanfabrics.com](mailto:info@jordanfabrics.com)

(541) 476-0214

1595 NW 6th St. Grants Pass, OR 97526