

# Saxifrage Tam

version 2

Designed by Véronik Avery



**skill level:** Intermediate  
One size

**finished measurements**  
Approximately 26" around x 9" high

**yarn**

**ÍSTEX LÉTTLOPI** (50 grs): 1 ball each #0057 Grey Heather (C1), #0054 Light Ash Heather (C2), #9427 Rust Heather (C3), #1416 Moor (C4), #1415 Rough Sea (C5), #9418 Stone Blue Heather (C6), #1417 Frostbite (C7), and #9431 Brick Heather (C8)

**Note:** If using leftover yarn, you will need 1 full ball C1; 40 yds each C2, C4, and C6; 20 yds each C3, C5, and C8; 10 yds C7.

**needles and notions**

16" circular needles, sizes 3 (3.25 mm) and 5 (3.75 mm) *or size to obtain gauge*

1 set (4) double-pointed needles (dpns), size 5 (3.75 mm)

6 st markers (1 a different color for beg-of-rnd)

Tapestry needle

**gauge**

22 sts and 25 rounds = 4" in St st in charted pattern on larger needle(s)  
*To save time, take time to check gauge*

[Ístex Léttlopi](#)

Find this Yarn 



BERROCO®

[www.berroco.com](http://www.berroco.com)



**NOTE:** We recommend using yarns called for in our instructions. Every effort has been made to ensure that directions contained in this book are accurate and complete, however errors do occur. We cannot be responsible for variance of individual knitters, human or typographical errors.

All pattern PDFs are updated when corrections are made. In the event of finding an error, please make sure you've downloaded the most recent version.

## NOTE

Do not carry yarn over more than 3 sts without twisting colors on WS to prevent long loops.

## HAT

With smaller circular needle, using C1, cast on 96 sts. Place different colored marker and join for working in the round. Work even in k1, p1 ribbing for 1". Change to larger circular needle.

**Inc Rnd:** With C1, \* k2, M1, rep from \* around—144 sts. Knit 2 rounds.

Begin working from chart (repeat chart 6 times around). Work even, following chart until 28 rounds have been completed.

**Note:** As you decrease for crown, when there are too few sts to fit comfortably on circular needle, change to dpns, dividing sts onto 3 needles.

**Shape Crown:** Follow Rnds 29–47 of chart, decreasing as indicated—12 sts.

**Final Rnd:** With C2, [SSK] 6 times—6 sts. Break off yarn leaving an 8" long tail. Thread tail into tapestry needle and draw through all sts on needles. Pull up tightly and secure. Fasten off.

## FINISHING

Weave in all ends and block as desired.



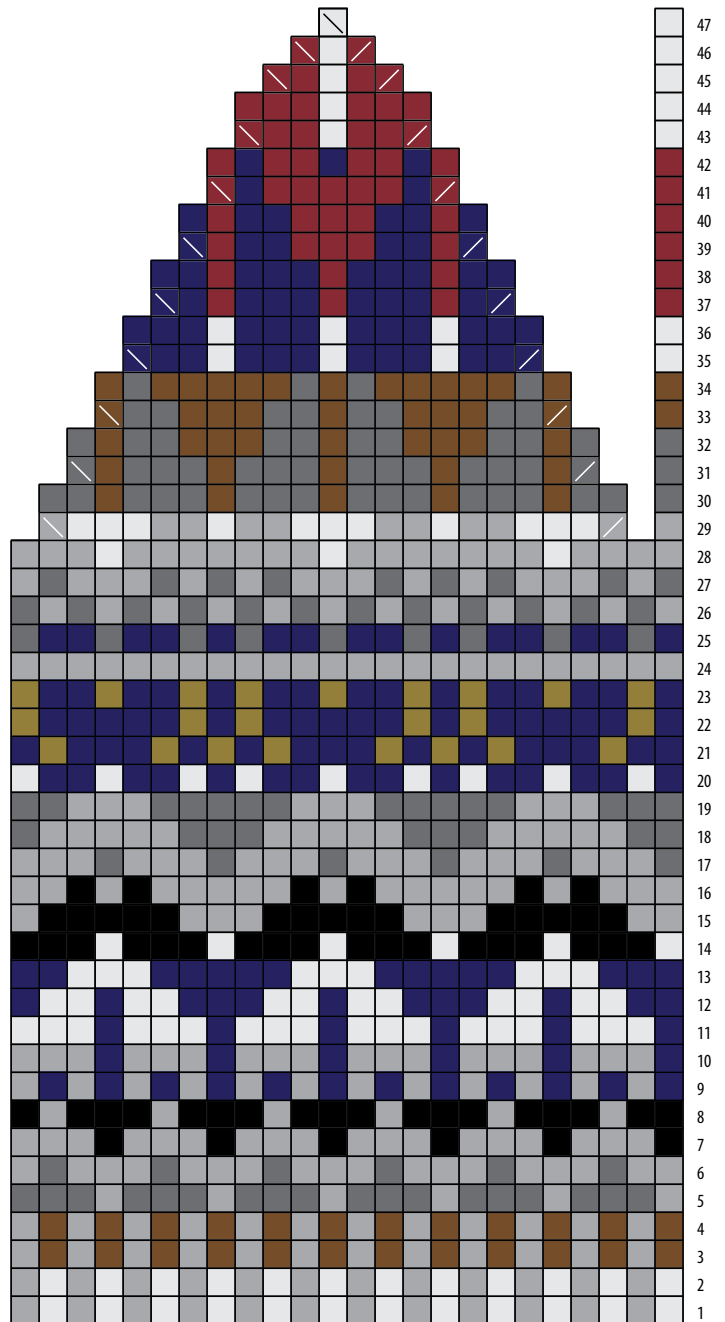
KEY TO CHART

-  k2tog
-  SSK
-  C1
-  C2
-  C3
-  C4
-  C5
-  C6
-  C7
-  C8

CHART NOTES

Work in St st (knit all sts) from right to left on every round.  
Starting with Rnd 29, decrease for crown as indicated.

SAXIFRAGE TAM CHART



## STANDARD ABBREVIATIONS &amp; TERMS

**beg:** beginning  
**CC:** contrasting color  
**CDD:** Centered Double Decrease—Slip 2 together (as if to k2tog), knit 1, pass the 2 slipped stitches over  
**cn:** cable needle  
**dec:** decrease  
**dpn(s):** double pointed needle(s)  
**end on WS:** end having just completed a Wrong Side row.  
**end on RS:** end having just completed a Right Side row  
**Garner St:** Knit EVERY row when working back and forth in rows. Knit 1 round, purl 1 round when working in the round.  
**inc:** increase  
**k:** knit  
**k tbl:** knit through the back loop(s)  
**k2tog:** knit 2 stitches together  
**k3tog:** knit 3 stitches together  
**kfb:** knit in the front and back of the next st  
**LH:** left hand  
**LLI:** Left Lifted Increase—Insert LH needle into the purl bump one row below the st just worked on the RH needle and knit into this st (1 st inc'd)  
**M1:** Make 1—Pick up horizontal strand between stitch just worked and next stitch from front to back, place on left hand needle, knit this stitch through the back (1 stitch increased).  
**M1L:** Make 1 Left—Work as for M1.  
**M1p:** Make 1 purl—Pick up horizontal strand between stitch just worked and next stitch from front to back, place on left hand needle, purl this stitch through the back (1 stitch increased).  
**M1pL:** Make 1 purl Left—Work as for M1p.  
**M1pR:** Make 1 purl Right—Pick up horizontal strand between stitch just worked and next stitch from back to front, place on left hand needle, purl this stitch through the front (1 stitch increased).  
**M1R:** Make 1 Right—Pick up horizontal strand between stitch just worked and next stitch from back to front, place on left hand needle, knit this stitch through the front (1 stitch increased).  
**MC:** main color  
**p:** purl  
**p tbl:** purl through the back loop(s)  
**p2tog:** purl 2 stitches together

**p3tog:** purl 3 stitches together  
**pat(s):** pattern(s)  
**pm:** place marker  
**pss:** pass slipped stitch over knit stitch  
**rep:** repeat  
**Rev St st:** Reverse Stockinette Stitch—Purl 1 row, knit 1 row alternately when working back and forth in rows. The purl side is the right side of the work. Purl EVERY round when working in the round.  
**RH:** right hand  
**RLI:** Right Lifted Increase—Insert RH needle into the purl bump of the next st on the LH needle and knit into this st (1 st inc'd)  
**rnd(s):** round(s)  
**RS:** right side  
**sl:** slip  
**sm:** slip marker  
**SSK:** Slip 2 stitches knitwise, insert point of left hand needle through fronts of these 2 stitches and knit 2 together.  
**SSP:** Slip 2 stitches knitwise, transfer these 2 stitches back to left hand needle, purl 2 together through the back loops.  
**SSSK:** Slip 3 stitches knitwise, insert point of left hand needle through fronts of these 3 stitches and knit 3 together.  
**st(s):** stitch(es)  
**St st:** Stockinette Stitch—Knit 1 row, purl 1 row alternately when working back and forth in rows. The knit side is the right side of work. Knit EVERY round when working in the round.  
**tbl:** through back loop(s)  
**w&t:** wrap and turn, a method of concealing a hole created in short row shaping. *On RS rows:* With yarn held in front, slip next stitch purlwise, then bring yarn between needles to the back. Slip that same stitch back to the left needle. Turn your work. *On WS Rows:* With yarn held in back, slip next stitch purlwise, then bring yarn between needles to the front. Slip that same stitch back to the left needle. Turn your work. Unless otherwise indicated, each time you come to a wrapped stitch when working subsequent rows, slip the wrap back over stitch and onto needle, then work the wrap together with its accompanying stitch.  
**WS:** wrong side  
**wyib:** with yarn in back  
**wyif:** with yarn in front  
**yo:** yarn over

Love Berroco patterns?  
 Sign up for our **KnitBits®** newsletter.

