

## Project: Rainbow Chevron Mini

INSPIRED BY *WITH FLYING COLORS* FROM DESIGNER MEGAN PITZ ([CANOERIDGECREATIONS.COM](http://CANOERIDGECREATIONS.COM))  
QUILT MAKER: JODY SANDERS



FABRICS are from the Tropicana collection by Cherrywood Fabrics ([cherrywoodfabrics.com](http://cherrywoodfabrics.com)).

An array of solids arranged in vertical rows creates a rainbow of waves.

## Project: Rainbow Chevron Mini

### Materials

- $\frac{1}{3}$  yard solid white (units)
- $\frac{1}{8}$  yard each of solid blue, dark orange, aqua, teal, dark green, light green, lime green, and light orange (units)
- $\frac{1}{4}$  yard black-and-white stripe (binding)
- $\frac{5}{8}$  yard backing fabric
- 19×23" batting

Finished quilt: 10 $\frac{1}{2}$ ×14 $\frac{1}{2}$ "

Finished block: 2" square

Yardages and cutting instructions are based on 42" of usable fabric width.

Measurements include  $\frac{1}{4}$ " seam allowances. Sew with right sides together unless otherwise stated.

Press seams in directions indicated by arrows on diagrams. If no direction is specified, press seams toward darker fabric.

### Cut Fabrics

Cut pieces in the following order.

#### From solid white, cut:

- 140—1 $\frac{1}{2}$ " squares

#### From solid blue (A), cut:

- 4—1 $\frac{1}{2}$ ×2 $\frac{1}{2}$ " rectangles

#### From solid dark orange (H), cut:

- 6—1 $\frac{1}{2}$ ×2 $\frac{1}{2}$ " rectangles

#### From each remaining solid— aqua (B), teal (C), dark green (D), light green (E), lime green (F), and light orange (G)—cut:

- 10—1 $\frac{1}{2}$ ×2 $\frac{1}{2}$ " rectangles

#### From black-and-white stripe, cut:

- 2—2 $\frac{1}{2}$ ×42" binding strips

### Assemble Units A–H

1. Use a pencil to mark a diagonal line on wrong side of each solid white 1 $\frac{1}{2}$ " square. (To prevent fabric from stretching as you draw lines, place 220-grit sandpaper under each square.)
2. Align a marked solid white square with top edge of a solid blue 1 $\frac{1}{2}$ ×2 $\frac{1}{2}$ " rectangle (Diagram 1; note direction of marked line). Sew on drawn line; trim excess fabric, leaving  $\frac{1}{4}$ " seam allowance. Press open attached triangle.
3. Align a second marked solid white square with bottom edge of Step 2 rectangle (Diagram 1; again note direction of marked line). Stitch, trim, and press as before to make a blue left-hand segment. The segment should be 1 $\frac{1}{2}$ ×2 $\frac{1}{2}$ " including seam allowances.
4. Repeat steps 2 and 3 to make two blue left-hand segments total.
5. Referring to Diagram 2 for direction of marked diagonal lines and pressing, repeat steps 2 and 3 using marked solid white squares and remaining solid blue 1 $\frac{1}{2}$ ×2 $\frac{1}{2}$ " rectangles to make two blue right-hand segments.
6. Aligning long edges and nesting seams, sew together a blue left-hand segment and a blue right-hand segment to make a Unit A (Diagram 3); press seam open. Unit A should be 2 $\frac{1}{2}$ " square including seam allowances.
7. Repeat Step 6 to make a second A unit.
8. Using solid dark orange 1 $\frac{1}{2}$ ×2 $\frac{1}{2}$ " rectangles, repeat steps 2–6 to make three H units total.
9. Using remaining solid 1 $\frac{1}{2}$ ×2 $\frac{1}{2}$ " rectangles and remaining marked solid white squares,

repeat steps 2–6 to make five each of B–G units.

### Assemble Quilt Top

1. Referring to Quilt Assembly Diagram, sew together one each of B–H units to make a vertical Row 1. Press seams toward B unit.
2. Repeat Step 1 to make rows 3 and 5.
3. To make Row 2, sew together one each of A–G units in a vertical row, noting that the point of units face the bottom of row. Press seams toward G unit.
4. Repeat Step 3 to make Row 4.
5. Sew together rows in numerical order to complete quilt top. Press seams open.

### Finish Quilt

1. Layer quilt top, batting, and backing; baste.
2. Quilt as desired. Quilt maker Jody Sanders machine-quilted a chevron design through the center of each unit horizontally across the quilt top.
3. Bind with black-and-white stripe binding strips.

Project: Rainbow Chevron Mini

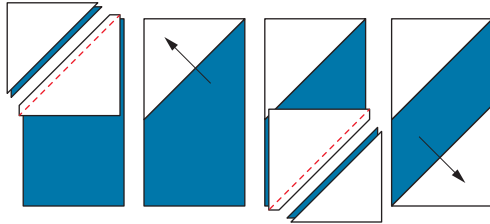


DIAGRAM 1

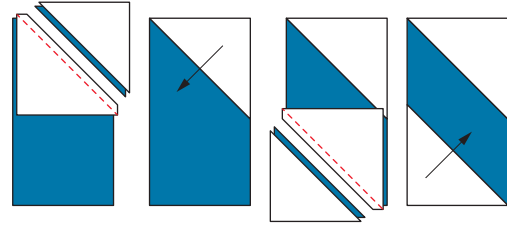
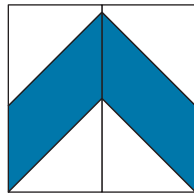
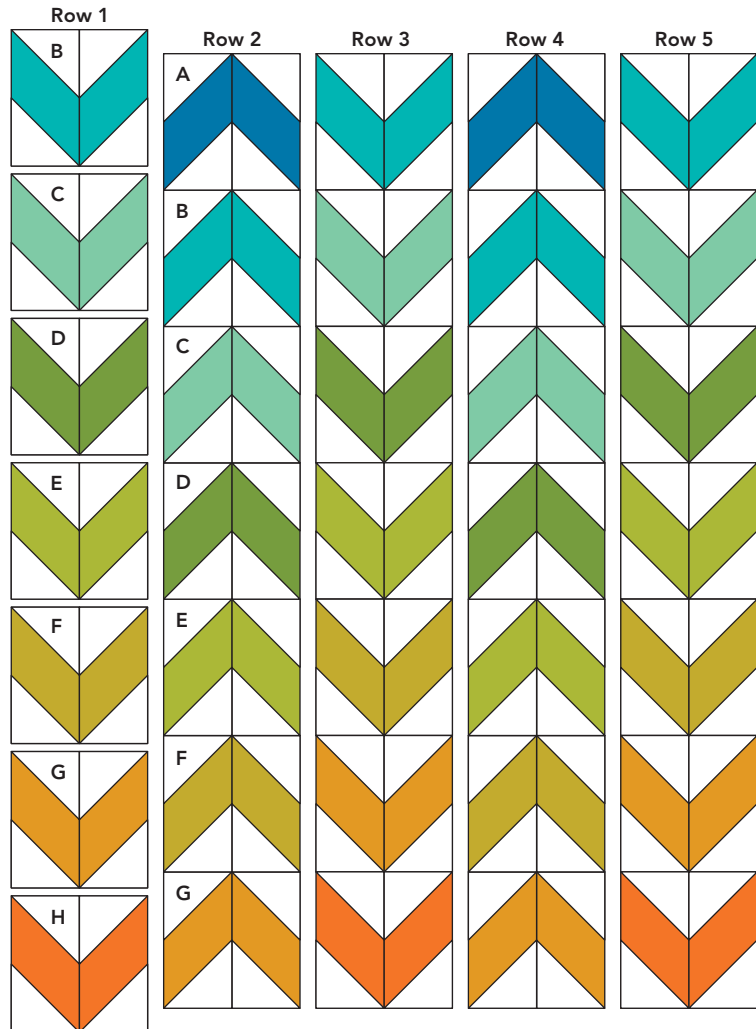


DIAGRAM 2



UNIT A  
DIAGRAM 3



QUILT ASSEMBLY DIAGRAM