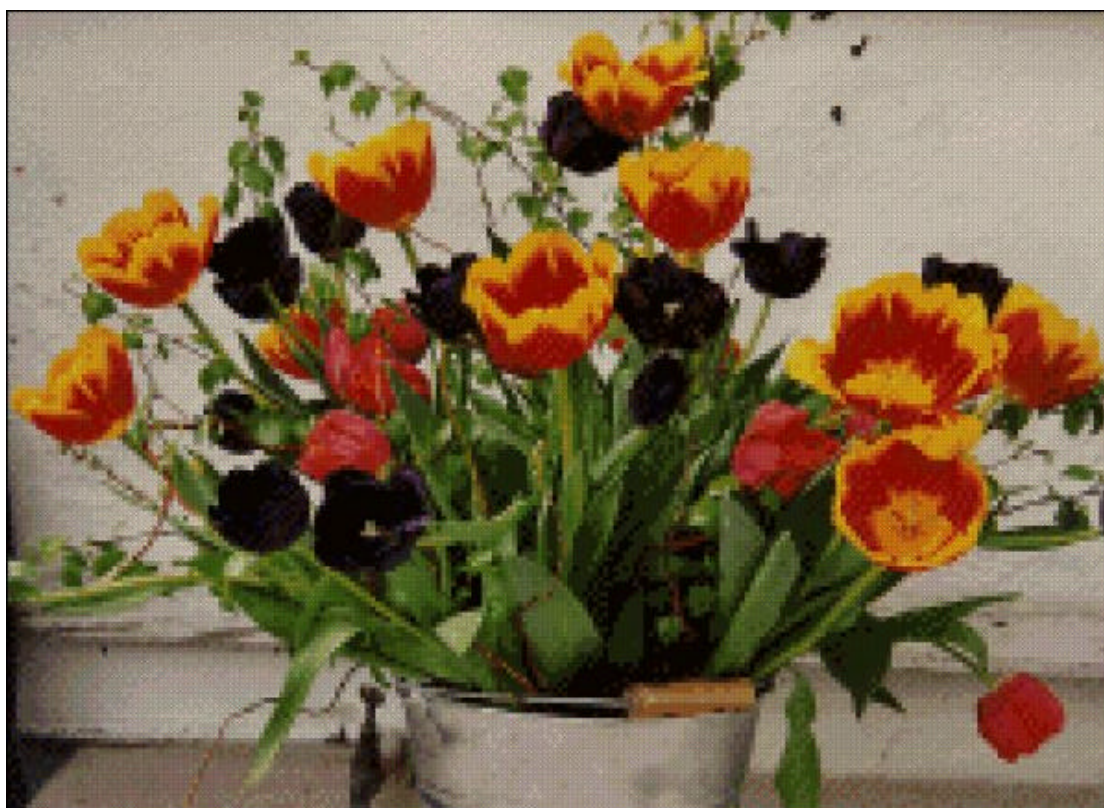


634 Tulips in a Bucket



This pattern may not be copied, sold or in any other way handled in any way that violates the international copyright laws. If you get hold of this pattern (and or this document) in any other way than via a direct download from www.goldenkite.com or via a mail from us, you should report that to us at legal_actions@goldenkite.com .

Copyright ? 2003-, Golden Kite. All rights reserved.

Instructions

Thank you for choosing Golden Kite products!
We hope you will have lots of fun with this cross-stitch pattern!

Fabric

Press the fabric with an iron if needed. A good thing to prevent the fabric from fraying is to machine zigzag the edges.

It is easiest to start in the center of the design. To locate the center of the fabric, fold the fabric in half both vertically and horizontally. The center is located where these two folds meet.

Stitches

Each length of DMC thread consists of six strands.

Use two of these strands for all stitches.

Note that some colors may be mixes (or blends) between two different pure colors. In that case take one strand of the two colors each and thread the two strands into the needle at the same time for stitching.

All stitches are full cross-stitches. No half-stitching and no back-stitching is necessary in this pattern.

All cross-stitches will be worked into the holes in the fabric from left to right. Always use the larger holes in the fabric for the stitches. Adjacent stitches should meet in the same hole. Make sure all stitches cross in the same direction.

Please be careful when washing the finished embroidery! The cotton thread may bleed when washed. Only hand wash it in lukewarm water. Remove excess water by roll it in a towel and lay it flat to air dry. Natural fabrics may shrink slightly when washed. We do not recommend washing the embroidery if not absolutely necessary and we take no responsibility for any damage that may occur.

When you start using this product you agree that Golden Kite (Golden K), or any people working for or in association with Golden Kite (Golden K), cannot be set responsible for any physical, mental, economical or other type of damage caused by this product (including this document, pattern, threads, needles and any other parts received by you from Golden Kite (Golden K)).

This pattern may not be copied, sold or in any other way handled in any way that violates the international copyright laws. If you get hold of this pattern (and or this document) in any other way than via a direct download from www.goldenkite.com or via a mail from us, you should report that to us at legal_actions@goldenkite.com .

Tulips in a Bucket

Stitch Count	
Horizontal:	219
Vertical:	159

Recommended Fabric Color
Antique White

This table tells the size of the pattern (without any margins) and the size of the fabric required to stitch the pattern (including recommended margins). 3 inch margins have been added on each side in the 'Including Margins' row.

The sizes are given for 14, 16 and 18 stitches per inch fabrics.

Make sure to use the 'Including Margins' row when cutting the piece of fabric to be used. Also make sure that 3 inch margins are enough for your stitching technique and add more margin areas if necessary.

	14				16				18			
	Width		Height		Width		Height		Width		Height	
	cm	inch	cm	inch	cm	inch	cm	inch	cm	inch	cm	inch
Pattern:	40	15.58	29	11.25	35	13.64	25	9.84	31	12.125	23	8.75
Including Margins:	56	22	45	18	51	20	41	16	47	19	39	15
	10				12				24			
	Width		Height		Width		Height		Width		Height	
	cm	inch	cm	inch	cm	inch	cm	inch	cm	inch	cm	inch
Pattern:	56	21.81	40	15.75	46	18.17	33	13.12	23	9.08	16	6.56
Including Margins:	72	28	56	22	62	25	49	20	39	16	32	13
	25				26				27			
	Width		Height		Width		Height		Width		Height	
	cm	inch	cm	inch	cm	inch	cm	inch	cm	inch	cm	inch
Pattern:	22	8.72	16	6.3	21	8.38	15	6.05	20	8.07	15	5.83
Including Margins:	38	15	32	13	37	15	31	13	36	15	31	12
	28				30				32			
	Width		Height		Width		Height		Width		Height	
	cm	inch	cm	inch	cm	inch	cm	inch	cm	inch	cm	inch
Pattern:	20	7.79	14	5.62	18	7.27	13	5.25	17	6.81	12	4.92
Including Margins:	36	14	30	12	34	14	29	12	33	13	28	11

Solid Color Stitches. Use two strands of the specified color for these stitches.		
Symbol	DMC	Name
↑	224	Shell Pink-VY LT
Ⓢ	307	Lemon
✕	326	Rose-VY DK
▨	327	Violet-VY DK
➔	347	Salmon-VY DK
◇	356	Terra Cotta-MD
≡	369	Pistachio Green-VY LT
⦶	407	Desert Sand-DK
⚒	413	Pewter Gray-DK
♠	435	Brown-VY LT
⦿	452	Shell Gray-MD
◇	453	Shell Gray-LT
♣	469	Avocado Green
✕	523	Fern Green-LT
Ⓕ	524	Fern Green-VY LT
Ⓜ	581	Moss Green
⦶	613	Drab Brown-VY LT
▨	640	Beige Gray-VY DK
⦶	644	Beige Gray-MD
⦶	645	Beaver Gray-VY DK
Ⓢ	647	Beaver Gray-MD
√	677	Old Gold-VY LT
:	712	Cream
⊙	721	Orange Spice-MD
⦿	733	Olive Green-MD
m	739	Tan-UL VY LT
//	742	Tangerine-LT
↓	817	Coral Red-VY DK
•	819	Baby Pink-LT
■	823	Navy Blue-DK
▲	831	Golden Olive-MD
♥	839	Beige Brown-DK
⦿	900	Burnt Orange-DK
†	905	Parrot Green-DK
☆	919	Red Copper
←	920	Copper-MD
*	927	Gray Green-LT
◇	928	Gray Green-VY LT

●	935	Avocado Green-DK
◆	937	Avocado Green-MD
⦿	938	Coffee Brown-UL DK
☒	945	Tawny
=	948	Peach-VY LT
z	972	Canary-DK
	973	Canary-BRT
⦿	989	Forest Green
⦶	3013	Khaki Green-LT
⦿	3021	Brown Gray-VY DK
≡	3022	Brown Gray-MD
⦶	3023	Brown Gray-LT
~	3024	Brown Gray-VY LT
⦶	3041	Antique Violet-MD
↔	3045	Yellow Beige-DK
∇	3046	Yellow Beige-MD
✦	3052	Green Gray-MD
♦♦	3064	Desert Sand
Ⓕ	3328	Salmon-DK
↘	3346	Hunter Green
⦶	3347	Yellow Green-MD
⦶	3348	Yellow Green-LT
⦶	3362	Pine Green-DK
+	3363	Pine Green-MD
⇒	3364	Pine Green
■	3371	Black Brown
✦	3712	Salmon-MD
↑	3721	Shell Pink-DK
✦	3772	Desert Sand-VY DK
↘	3782	Mocha Brown-LT
⦿	3790	Beige Gray-UL DK
●	3799	Pewter Gray-VY DK
⦶	3820	Straw-DK
↓	3822	Straw-LT
*	3831	Raspberry-DK
*	3832	Raspberry-MD
✦	3835	Grape-MD
⦶	3853	Autumn Gold-DK
Ⓜ	3861	Cocoa-LT
‡	3866	Mocha Brown-UL VY LT

Blend Stitches. Use one strand of each of DMC1 and DMC2 for these stitches.

Symbol	DMC1	Name1	DMC2	Name2
↓	347	Salmon-VY DK	900	Burnt Orange-DK
■	3347	Yellow Green-MD	905	Parrot Green-DK
III	3023	Brown Gray-LT	453	Shell Gray-LT
4	3866	Mocha Brown-UL VY LT	3024	Brown Gray-VY LT
—	3866	Mocha Brown-UL VY LT	712	Cream
⦿	972	Canary-DK	3820	Straw-DK
⊕	741	Tangerine-MD	3820	Straw-DK
★	972	Canary-DK	721	Orange Spice-MD
⊕	920	Copper-MD	921	Copper
☉	721	Orange Spice-MD	900	Burnt Orange-DK
●	938	Coffee Brown-UL DK	839	Beige Brown-DK
●	919	Red Copper	938	Coffee Brown-UL DK
☉	733	Olive Green-MD	3853	Autumn Gold-DK
☉	469	Avocado Green	905	Parrot Green-DK
☉	581	Moss Green	733	Olive Green-MD
▼	3831	Raspberry-DK	3832	Raspberry-MD
☉	347	Salmon-VY DK	3712	Salmon-MD
☉	3835	Grape-MD	3799	Pewter Gray-VY DK
☉	3346	Hunter Green	3347	Yellow Green-MD

This table specifies how much thread of each color is required to stitch this pattern. It is good to know that one complete DMC skein contains 313 inches (795 cm) thread.

DMC	Name	Usage (cm)	Usage (inch)	Usage (cm)	Usage (inch)	Usage (cm)	Usage (inch)
		14		16		18	
224	Shell Pink-VY LT	5	1	5	1	4	1
307	Lemon	15	5	14	5	13	5
326	Rose-VY DK	16	6	15	5	14	5
327	Violet-VY DK	6	2	5	1	5	1
347	Salmon-VY DK	142	55	136	53	122	48
356	Terra Cotta-MD	13	5	13	5	11	4
369	Pistachio Green-VY LT	3	1	3	1	3	1
407	Desert Sand-DK	18	7	17	6	15	5
413	Pewter Gray-DK	27	10	26	10	23	9
435	Brown-VY LT	37	14	36	14	32	12
452	Shell Gray-MD	111	43	106	41	95	37
453	Shell Gray-LT	561	220	535	210	481	189
469	Avocado Green	161	63	154	60	138	54
523	Fern Green-LT	27	10	26	10	23	9
524	Fern Green-VY LT	52	20	49	19	44	17
581	Moss Green	79	31	75	29	68	26
613	Drab Brown-VY LT	40	15	38	14	34	13
640	Beige Gray-VY DK	89	35	85	33	76	29
644	Beige Gray-MD	131	51	124	48	112	44
645	Beaver Gray-VY DK	81	31	77	30	69	27
647	Beaver Gray-MD	120	47	114	44	103	40
677	Old Gold-VY LT	4	1	4	1	3	1
712	Cream	465	183	443	174	399	157
721	Orange Spice-MD	157	61	149	58	134	52
733	Olive Green-MD	65	25	62	24	56	22
739	Tan-UL VY LT	27	10	26	10	23	9
741	Tangerine-MD	32	12	30	11	27	10
742	Tangerine-LT	9	3	9	3	8	3
817	Coral Red-VY DK	253	99	241	94	217	85
819	Baby Pink-LT	41	16	39	15	35	13
823	Navy Blue-DK	44	17	41	16	37	14
831	Golden Olive-MD	49	19	47	18	42	16
839	Beige Brown-DK	84	33	80	31	72	28
900	Burnt Orange-DK	98	38	94	37	84	33
905	Parrot Green-DK	134	52	128	50	115	45
919	Red Copper	146	57	139	54	125	49
920	Copper-MD	77	30	73	28	66	25
921	Copper	34	13	32	12	29	11
927	Gray Green-LT	23	9	22	8	20	7
928	Gray Green-VY LT	46	18	44	17	39	15
935	Avocado Green-DK	419	164	399	157	359	141
937	Avocado Green-MD	277	109	264	103	238	93
938	Coffee Brown-UL DK	265	104	252	99	227	89
945	Tawny	7	2	6	2	6	2
948	Peach-VY LT	7	2	6	2	6	2
972	Canary-DK	339	133	323	127	291	114
973	Canary-BRT	23	9	22	8	20	7
989	Forest Green	44	17	42	16	38	14
3013	Khaki Green-LT	37	14	35	13	32	12
3021	Brown Gray-VY DK	91	35	87	34	78	30
3022	Brown Gray-MD	229	90	218	85	196	77
3023	Brown Gray-LT	228	89	217	85	195	76
3024	Brown Gray-VY LT	537	211	512	201	461	181

3041	Antique Violet-MD	44	17	41	16	37	14
3045	Yellow Beige-DK	21	8	20	7	18	7
3046	Yellow Beige-MD	20	7	19	7	17	6
3052	Green Gray-MD	43	16	41	16	37	14
3064	Desert Sand	12	4	11	4	10	3
3328	Salmon-DK	7	2	6	2	6	2
3346	Hunter Green	272	107	259	101	233	91
3347	Yellow Green-MD	175	68	167	65	150	59
3348	Yellow Green-LT	40	15	38	14	34	13
3362	Pine Green-DK	142	55	135	53	122	48
3363	Pine Green-MD	65	25	62	24	55	21
3364	Pine Green	81	31	77	30	69	27
3371	Black Brown	473	186	450	177	405	159
3712	Salmon-MD	24	9	23	9	21	8
3721	Shell Pink-DK	17	6	16	6	14	5
3772	Desert Sand-VY DK	37	14	35	13	32	12
3782	Mocha Brown-LT	68	26	64	25	58	22
3790	Beige Gray-UL DK	43	16	41	16	37	14
3799	Pewter Gray-VY DK	92	36	88	34	79	31
3820	Straw-DK	98	38	93	36	84	33
3822	Straw-LT	18	7	18	7	16	6
3831	Raspberry-DK	28	11	27	10	24	9
3832	Raspberry-MD	20	7	19	7	17	6
3835	Grape-MD	7	2	7	2	6	2
3853	Autumn Gold-DK	17	6	16	6	14	5
3861	Cocoa-LT	229	90	218	85	196	77
3866	Mocha Brown-UL VY LT	1671	657	1591	626	1432	563

Extended thread usage table.							
DMC	Name	Usage (cm)	Usage (inch)	Usage (cm)	Usage (inch)	Usage (cm)	Usage (inch)
		10		12		24	
224	Shell Pink-VY LT	7	2	6	2	3	1
307	Lemon	23	9	20	8	10	4
326	Rose-VY DK	25	9	21	8	11	4
327	Violet-VY DK	9	2	8	2	4	1
347	Salmon-VY DK	220	86	183	72	92	36
356	Terra Cotta-MD	20	7	17	6	8	3
369	Pistachio Green-VY LT	5	2	5	2	2	1
407	Desert Sand-DK	27	9	23	8	11	4
413	Pewter Gray-DK	41	16	35	14	17	7
435	Brown-VY LT	58	22	48	18	24	9
452	Shell Gray-MD	171	67	143	56	71	28
453	Shell Gray-LT	866	340	722	284	361	142
469	Avocado Green	248	97	207	81	104	41
523	Fern Green-LT	41	16	35	14	17	7
524	Fern Green-VY LT	79	31	66	26	33	13
581	Moss Green	122	47	102	39	51	20
613	Drab Brown-VY LT	61	23	51	20	26	10
640	Beige Gray-VY DK	137	52	114	44	57	22
644	Beige Gray-MD	202	79	168	66	84	33
645	Beaver Gray-VY DK	124	49	104	41	52	20
647	Beaver Gray-MD	185	72	155	60	77	30
677	Old Gold-VY LT	5	2	5	2	2	1
712	Cream	718	283	599	236	299	118
721	Orange Spice-MD	241	94	201	78	101	39
733	Olive Green-MD	101	40	84	33	42	17

739	Tan-UL VY LT	41	16	35	14	17	7
741	Tangerine-MD	49	18	41	15	20	8
742	Tangerine-LT	14	5	12	5	6	2
817	Coral Red-VY DK	391	153	326	128	163	64
819	Baby Pink-LT	63	23	53	20	26	10
823	Navy Blue-DK	67	25	56	21	28	11
831	Golden Olive-MD	76	29	63	24	32	12
839	Beige Brown-DK	130	50	108	42	54	21
900	Burnt Orange-DK	151	59	126	50	63	25
905	Parrot Green-DK	207	81	173	68	86	34
919	Red Copper	225	88	188	74	94	37
920	Copper-MD	119	45	99	38	50	19
921	Copper	52	20	44	17	22	8
927	Gray Green-LT	36	13	30	11	15	5
928	Gray Green-VY LT	70	27	59	23	29	11
935	Avocado Green-DK	646	254	539	212	269	106
937	Avocado Green-MD	428	167	357	140	179	70
938	Coffee Brown-UL DK	409	160	341	134	170	67
945	Tawny	11	4	9	3	5	2
948	Peach-VY LT	11	4	9	3	5	2
972	Canary-DK	524	205	437	171	218	86
973	Canary-BRT	36	13	30	11	15	5
989	Forest Green	68	25	57	21	29	11
3013	Khaki Green-LT	58	22	48	18	24	9
3021	Brown Gray-VY DK	140	54	117	45	59	23
3022	Brown Gray-MD	353	139	294	116	147	58
3023	Brown Gray-LT	351	137	293	114	146	57
3024	Brown Gray-VY LT	830	326	692	272	346	136
3041	Antique Violet-MD	67	25	56	21	28	11
3045	Yellow Beige-DK	32	13	27	11	14	5
3046	Yellow Beige-MD	31	11	26	9	13	5
3052	Green Gray-MD	67	25	56	21	28	11
3064	Desert Sand	18	5	15	5	8	2
3328	Salmon-DK	11	4	9	3	5	2
3346	Hunter Green	419	164	350	137	175	68
3347	Yellow Green-MD	270	106	225	89	113	44
3348	Yellow Green-LT	61	23	51	20	26	10
3362	Pine Green-DK	220	86	183	72	92	36
3363	Pine Green-MD	99	38	83	32	41	16
3364	Pine Green	124	49	104	41	52	20
3371	Black Brown	729	286	608	239	304	119
3712	Salmon-MD	38	14	32	12	16	6
3721	Shell Pink-DK	25	9	21	8	11	4
3772	Desert Sand-VY DK	58	22	48	18	24	9
3782	Mocha Brown-LT	104	40	87	33	44	17
3790	Beige Gray-UL DK	67	25	56	21	28	11
3799	Pewter Gray-VY DK	142	56	119	47	59	23
3820	Straw-DK	151	59	126	50	63	25
3822	Straw-LT	29	11	24	9	12	5
3831	Raspberry-DK	43	16	36	14	18	7
3832	Raspberry-MD	31	11	26	9	13	5
3835	Grape-MD	11	4	9	3	5	2
3853	Autumn Gold-DK	25	9	21	8	11	4
3861	Cocoa-LT	353	139	294	116	147	58
3866	Mocha Brown-UL VY LT	2578	1013	2148	845	1074	422

Extended thread usage table.

DMC	Name	Usage (cm)	Usage (inch)	Usage (cm)	Usage (inch)	Usage (cm)	Usage (inch)
		25		26		27	
224	Shell Pink-VY LT	3	1	3	1	3	1
307	Lemon	9	4	9	3	9	3
326	Rose-VY DK	10	4	10	3	9	3
327	Violet-VY DK	4	1	3	1	3	1
347	Salmon-VY DK	88	35	84	33	81	32
356	Terra Cotta-MD	8	3	8	3	7	3
369	Pistachio Green-VY LT	2	1	2	1	2	1
407	Desert Sand-DK	11	4	10	3	10	3
413	Pewter Gray-DK	17	6	16	6	15	6
435	Brown-VY LT	23	9	22	8	21	8
452	Shell Gray-MD	68	27	66	26	63	25
453	Shell Gray-LT	346	136	333	131	321	126
469	Avocado Green	99	39	96	37	92	36
523	Fern Green-LT	17	6	16	6	15	6
524	Fern Green-VY LT	32	12	30	12	29	11
581	Moss Green	49	19	47	18	45	17
613	Drab Brown-VY LT	24	9	24	9	23	9
640	Beige Gray-VY DK	55	21	53	20	51	19
644	Beige Gray-MD	81	32	78	30	75	29
645	Beaver Gray-VY DK	50	19	48	19	46	18
647	Beaver Gray-MD	74	29	71	28	69	27
677	Old Gold-VY LT	2	1	2	1	2	1
712	Cream	287	113	276	109	266	105
721	Orange Spice-MD	96	37	93	36	89	35
733	Olive Green-MD	40	16	39	15	37	15
739	Tan-UL VY LT	17	6	16	6	15	6
741	Tangerine-MD	19	7	19	7	18	7
742	Tangerine-LT	6	2	6	2	5	2
817	Coral Red-VY DK	156	61	150	59	145	57
819	Baby Pink-LT	25	9	24	9	23	9
823	Navy Blue-DK	27	10	26	10	25	9
831	Golden Olive-MD	30	12	29	11	28	11
839	Beige Brown-DK	52	20	50	19	48	19
900	Burnt Orange-DK	60	24	58	23	56	22
905	Parrot Green-DK	83	32	80	31	77	30
919	Red Copper	90	35	87	34	83	33
920	Copper-MD	48	18	46	17	44	17
921	Copper	21	8	20	8	19	7
927	Gray Green-LT	14	5	14	5	13	5
928	Gray Green-VY LT	28	11	27	10	26	10
935	Avocado Green-DK	258	102	249	98	239	94
937	Avocado Green-MD	171	67	165	64	159	62
938	Coffee Brown-UL DK	163	64	157	62	151	59
945	Tawny	4	1	4	1	4	1
948	Peach-VY LT	4	1	4	1	4	1
972	Canary-DK	210	82	201	79	194	76
973	Canary-BRT	14	5	14	5	13	5
989	Forest Green	27	10	26	10	25	9
3013	Khaki Green-LT	23	9	22	8	21	8
3021	Brown Gray-VY DK	56	22	54	21	52	20
3022	Brown Gray-MD	141	55	136	53	131	51
3023	Brown Gray-LT	140	55	135	53	130	51
3024	Brown Gray-VY LT	332	130	319	125	307	121
3041	Antique Violet-MD	27	10	26	10	25	9

3045	Yellow Beige-DK	13	5	12	5	12	5
3046	Yellow Beige-MD	12	4	12	4	11	4
3052	Green Gray-MD	27	10	26	10	25	9
3064	Desert Sand	7	2	7	2	7	2
3328	Salmon-DK	4	1	4	1	4	1
3346	Hunter Green	168	66	161	63	155	61
3347	Yellow Green-MD	108	42	104	41	100	39
3348	Yellow Green-LT	24	9	24	9	23	9
3362	Pine Green-DK	88	35	84	33	81	32
3363	Pine Green-MD	40	15	38	15	37	14
3364	Pine Green	50	19	48	19	46	18
3371	Black Brown	292	114	280	110	270	106
3712	Salmon-MD	15	6	15	6	14	5
3721	Shell Pink-DK	10	4	10	3	9	3
3772	Desert Sand-VY DK	23	9	22	8	21	8
3782	Mocha Brown-LT	42	16	40	15	39	15
3790	Beige Gray-UL DK	27	10	26	10	25	9
3799	Pewter Gray-VY DK	57	22	55	21	53	21
3820	Straw-DK	60	24	58	23	56	22
3822	Straw-LT	12	4	11	4	11	4
3831	Raspberry-DK	17	6	17	6	16	6
3832	Raspberry-MD	12	4	12	4	11	4
3835	Grape-MD	4	1	4	1	4	1
3853	Autumn Gold-DK	10	4	10	3	9	3
3861	Cocoa-LT	141	55	136	53	131	51
3866	Mocha Brown-UL VY LT	1031	405	991	390	955	375

Extended thread usage table.							
DMC	Name	Usage (cm)	Usage (inch)	Usage (cm)	Usage (inch)	Usage (cm)	Usage (inch)
		28		30		32	
224	Shell Pink-VY LT	3	1	2	1	2	1
307	Lemon	8	3	8	3	7	3
326	Rose-VY DK	9	3	8	3	8	3
327	Violet-VY DK	3	1	3	1	3	1
347	Salmon-VY DK	78	31	73	29	69	27
356	Terra Cotta-MD	7	3	7	2	6	2
369	Pistachio Green-VY LT	2	1	2	1	2	1
407	Desert Sand-DK	10	3	9	3	8	3
413	Pewter Gray-DK	15	6	14	5	13	5
435	Brown-VY LT	21	8	19	7	18	7
452	Shell Gray-MD	61	24	57	22	53	21
453	Shell Gray-LT	309	122	289	113	271	106
469	Avocado Green	89	35	83	32	78	30
523	Fern Green-LT	15	6	14	5	13	5
524	Fern Green-VY LT	28	11	26	10	25	10
581	Moss Green	44	17	41	16	38	15
613	Drab Brown-VY LT	22	8	20	8	19	7
640	Beige Gray-VY DK	49	19	46	17	43	16
644	Beige Gray-MD	72	28	67	26	63	25
645	Beaver Gray-VY DK	44	17	41	16	39	15
647	Beaver Gray-MD	66	26	62	24	58	23
677	Old Gold-VY LT	2	1	2	1	2	1
712	Cream	257	101	239	94	224	88
721	Orange Spice-MD	86	33	80	31	75	29
733	Olive Green-MD	36	14	34	13	32	12
739	Tan-UL VY LT	15	6	14	5	13	5
741	Tangerine-MD	17	6	16	6	15	6

Copyright ? 2003-, Golden Kite (Golden K.)

Internet: www.goldenkite.com

e-mail: info@goldenkite.com

742	Tangerine-LT	5	2	5	2	5	2
817	Coral Red-VY DK	140	55	130	51	122	48
819	Baby Pink-LT	23	8	21	8	20	7
823	Navy Blue-DK	24	9	22	8	21	8
831	Golden Olive-MD	27	10	25	10	24	9
839	Beige Brown-DK	46	18	43	17	41	16
900	Burnt Orange-DK	54	21	50	20	47	19
905	Parrot Green-DK	74	29	69	27	65	25
919	Red Copper	80	32	75	29	70	28
920	Copper-MD	42	16	40	15	37	14
921	Copper	19	7	17	7	16	6
927	Gray Green-LT	13	5	12	4	11	4
928	Gray Green-VY LT	25	10	23	9	22	8
935	Avocado Green-DK	231	91	215	85	202	79
937	Avocado Green-MD	153	60	143	56	134	52
938	Coffee Brown-UL DK	146	57	136	53	128	50
945	Tawny	4	1	4	1	3	1
948	Peach-VY LT	4	1	4	1	3	1
972	Canary-DK	187	73	175	68	164	64
973	Canary-BRT	13	5	12	4	11	4
989	Forest Green	24	9	23	8	21	8
3013	Khaki Green-LT	21	8	19	7	18	7
3021	Brown Gray-VY DK	50	19	47	18	44	17
3022	Brown Gray-MD	126	50	118	46	110	43
3023	Brown Gray-LT	125	49	117	46	110	43
3024	Brown Gray-VY LT	296	116	277	109	259	102
3041	Antique Violet-MD	24	9	22	8	21	8
3045	Yellow Beige-DK	12	5	11	4	10	4
3046	Yellow Beige-MD	11	4	10	4	10	3
3052	Green Gray-MD	24	9	22	8	21	8
3064	Desert Sand	6	2	6	2	6	2
3328	Salmon-DK	4	1	4	1	3	1
3346	Hunter Green	150	59	140	55	131	51
3347	Yellow Green-MD	96	38	90	35	84	33
3348	Yellow Green-LT	22	8	20	8	19	7
3362	Pine Green-DK	78	31	73	29	69	27
3363	Pine Green-MD	35	14	33	13	31	12
3364	Pine Green	44	17	41	16	39	15
3371	Black Brown	260	102	243	95	228	89
3712	Salmon-MD	14	5	13	5	12	5
3721	Shell Pink-DK	9	3	8	3	8	3
3772	Desert Sand-VY DK	21	8	19	7	18	7
3782	Mocha Brown-LT	37	14	35	13	33	12
3790	Beige Gray-UL DK	24	9	22	8	21	8
3799	Pewter Gray-VY DK	51	20	47	19	44	17
3820	Straw-DK	54	21	50	20	47	19
3822	Straw-LT	10	4	10	4	9	3
3831	Raspberry-DK	15	6	14	5	14	5
3832	Raspberry-MD	11	4	10	4	10	3
3835	Grape-MD	4	1	4	1	3	1
3853	Autumn Gold-DK	9	3	8	3	8	3
3861	Cocoa-LT	126	50	118	46	110	43
3866	Mocha Brown-UL VY LT	921	362	859	338	806	317

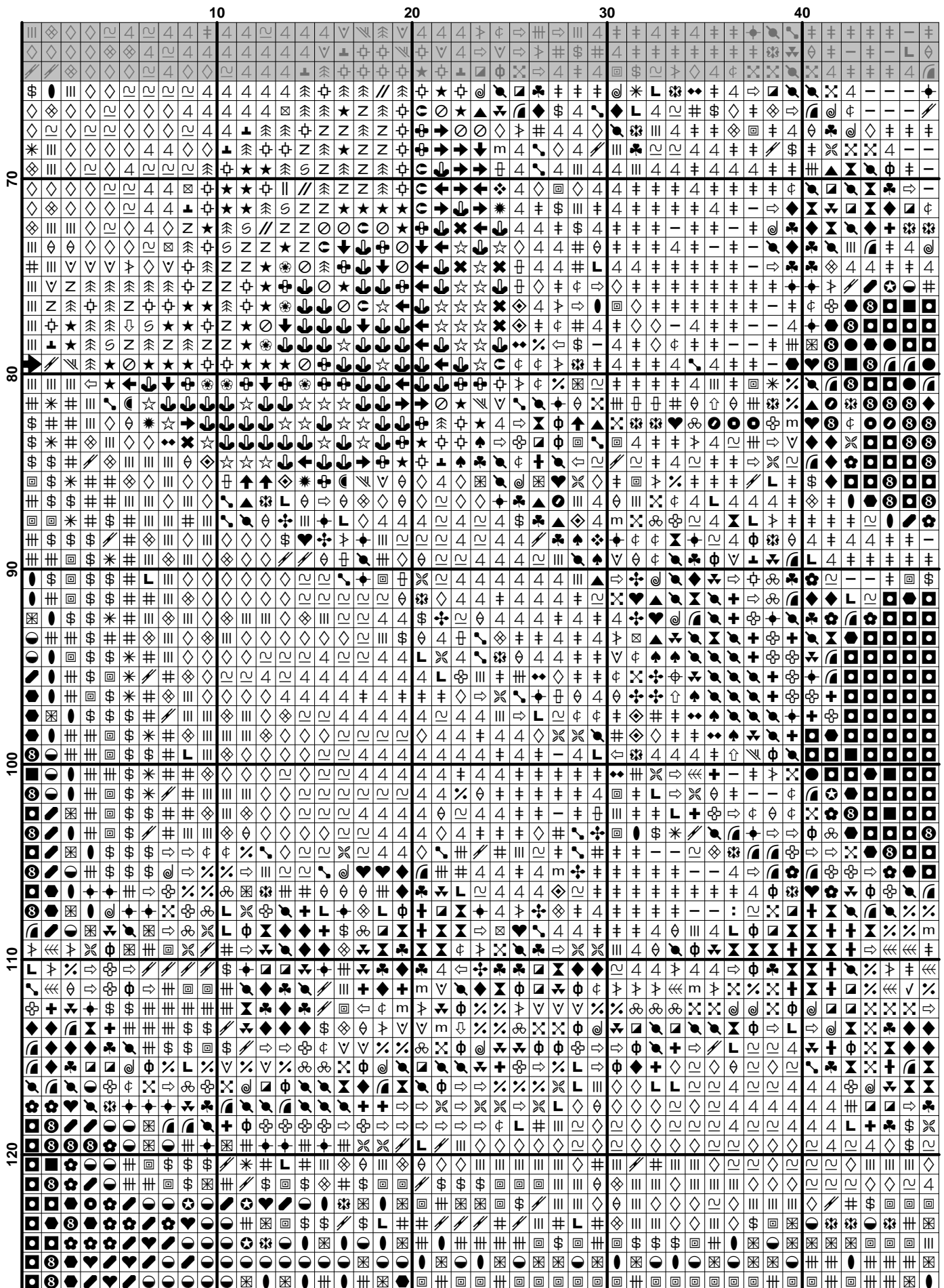
(7)

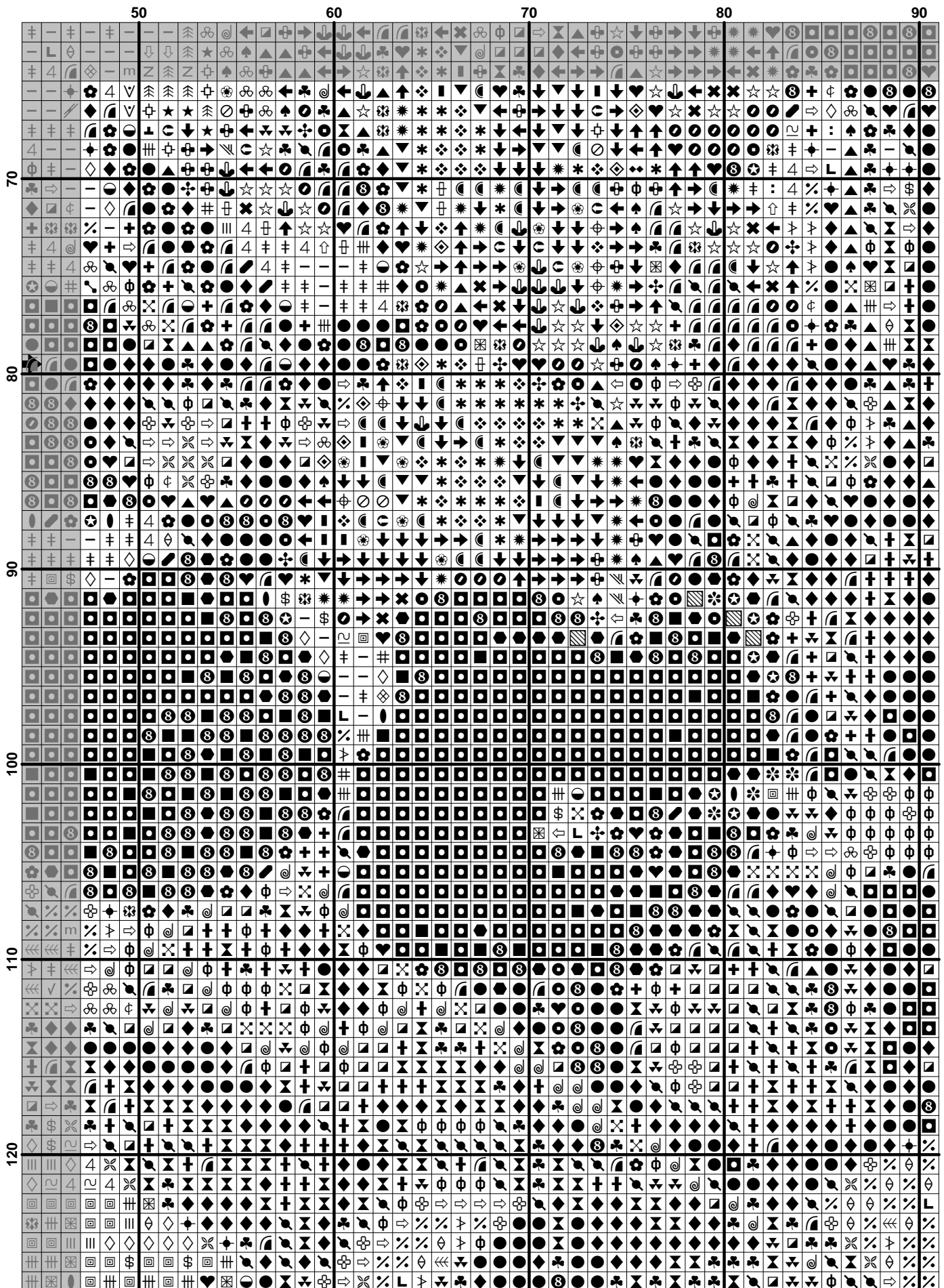
(8)

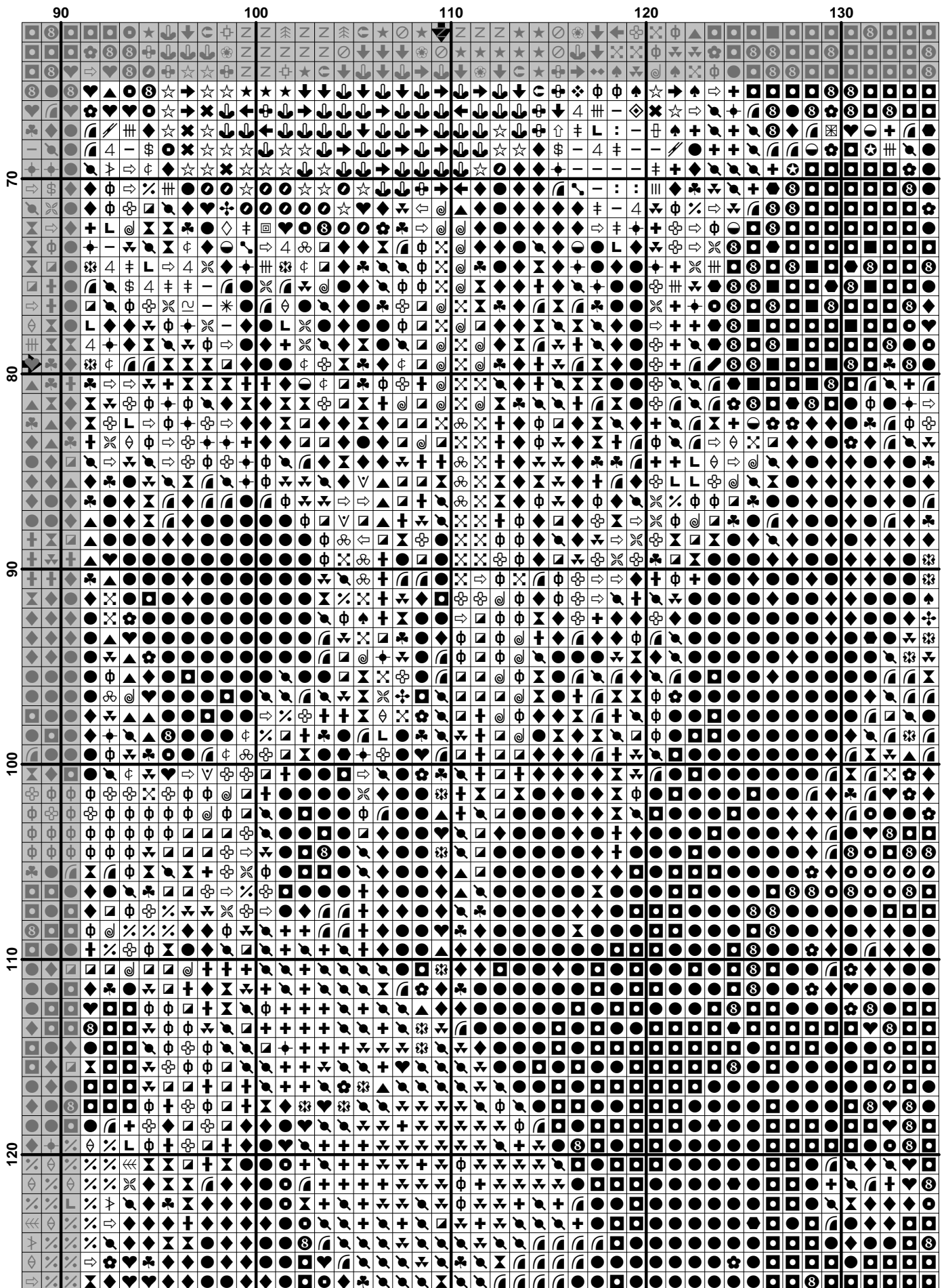
$$(8) \quad \frac{1}{\Gamma(\alpha)} \int_0^t (t-s)^{\alpha-1} f(s) ds = \frac{1}{\Gamma(\alpha)} \int_0^t (t-s)^{\alpha-1} g(s) ds$$

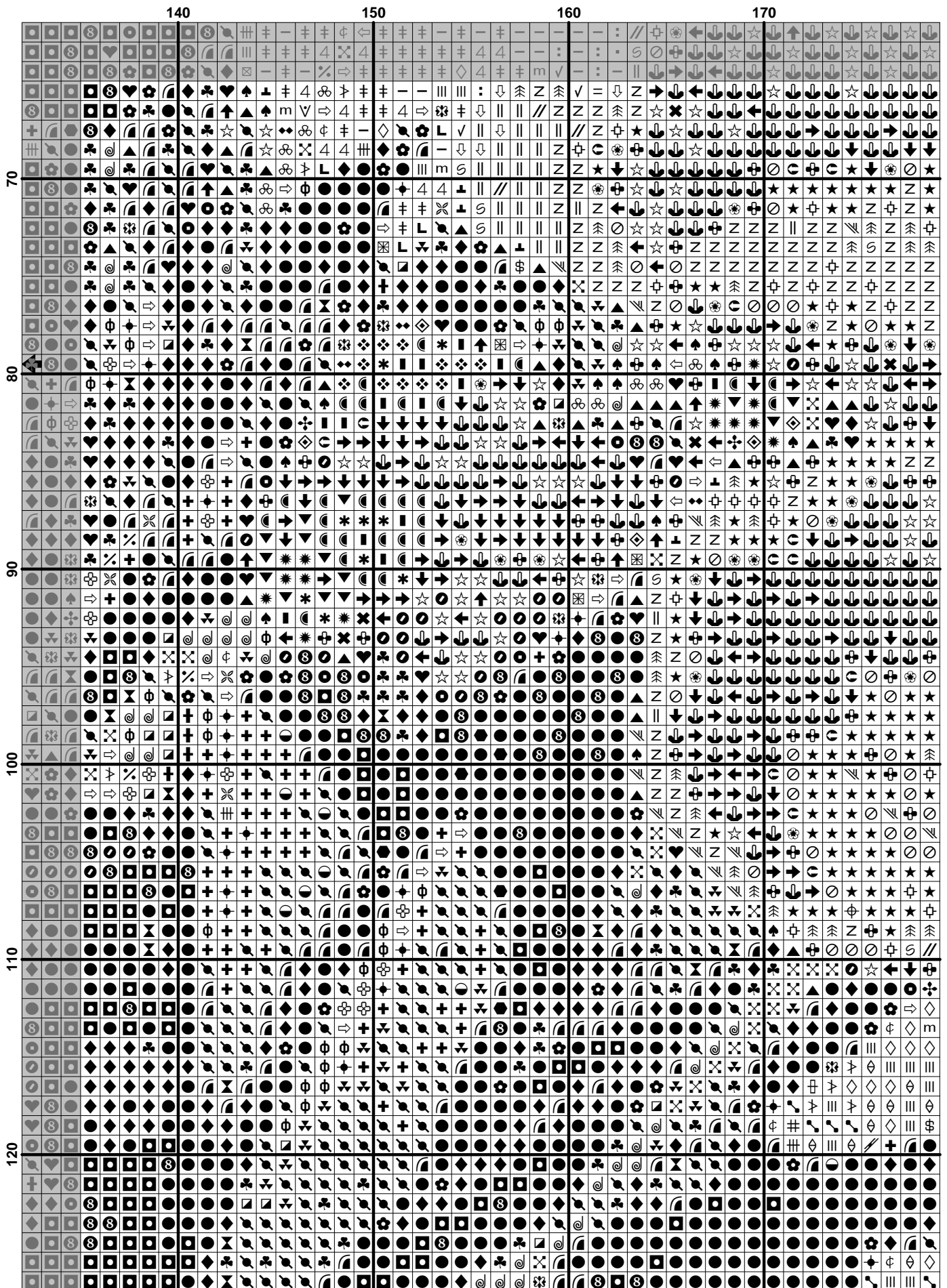
	140														150														160														170													
10																																																								
20																																																								
30																																																								

(10)

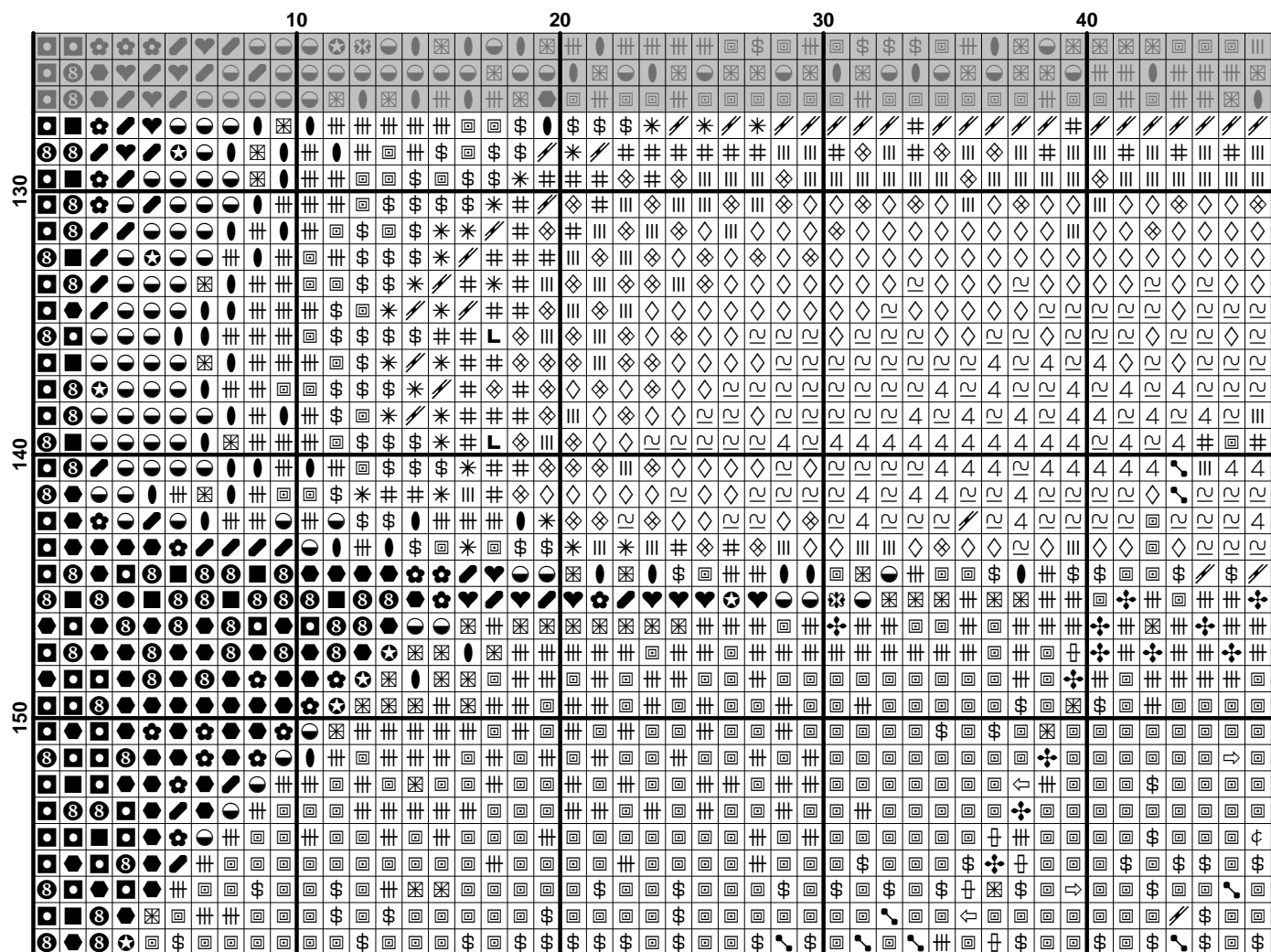




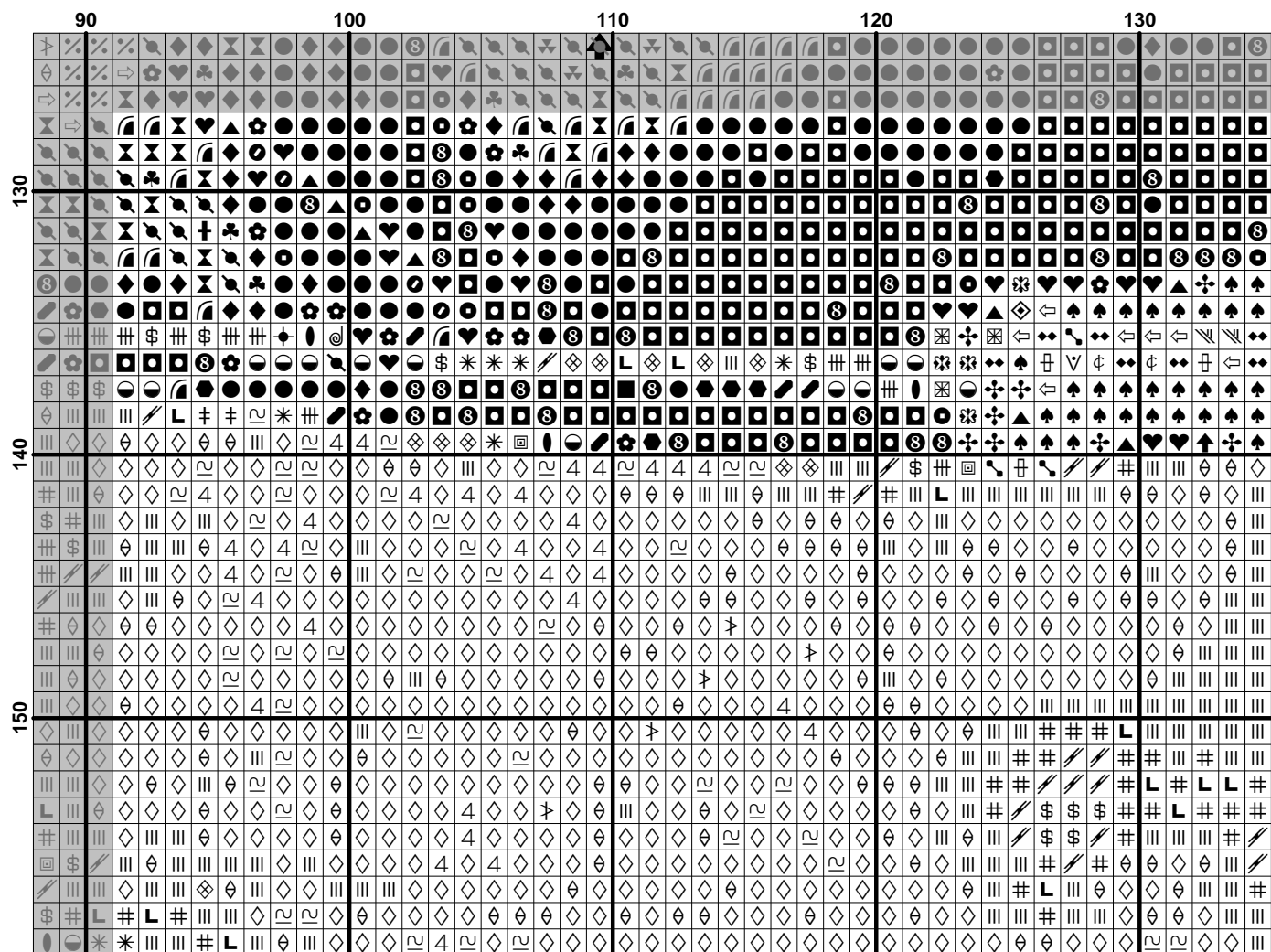


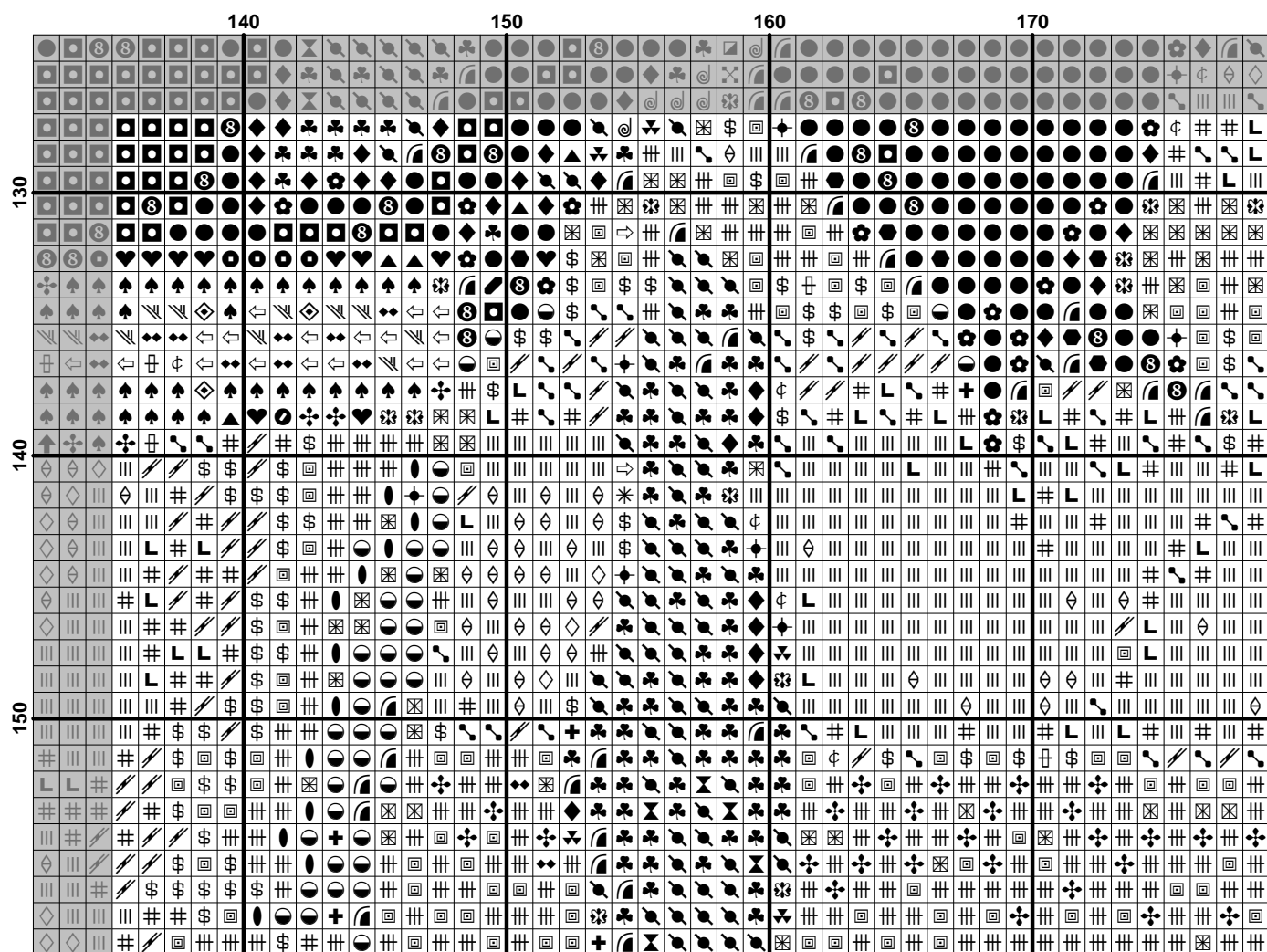












[illegible]