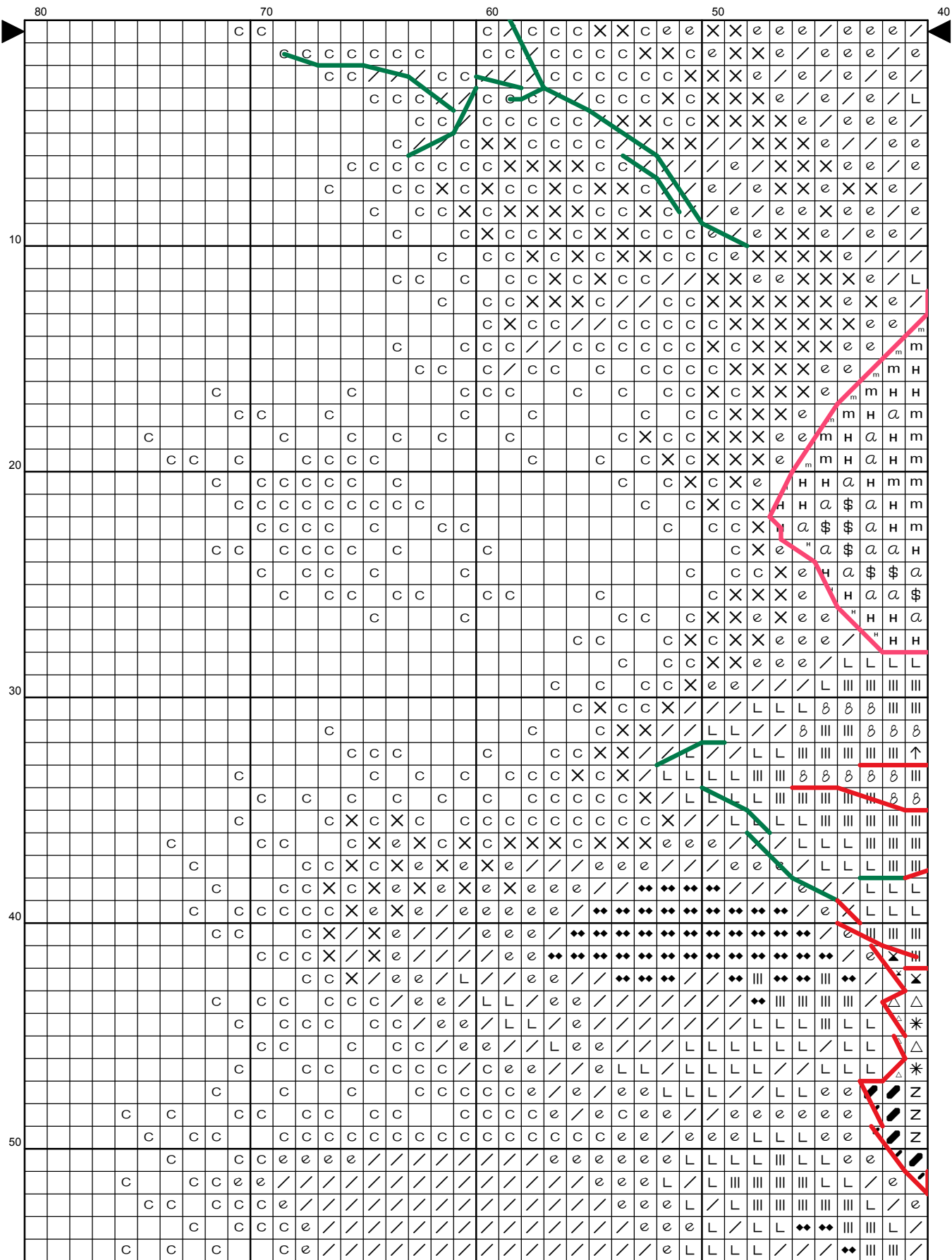




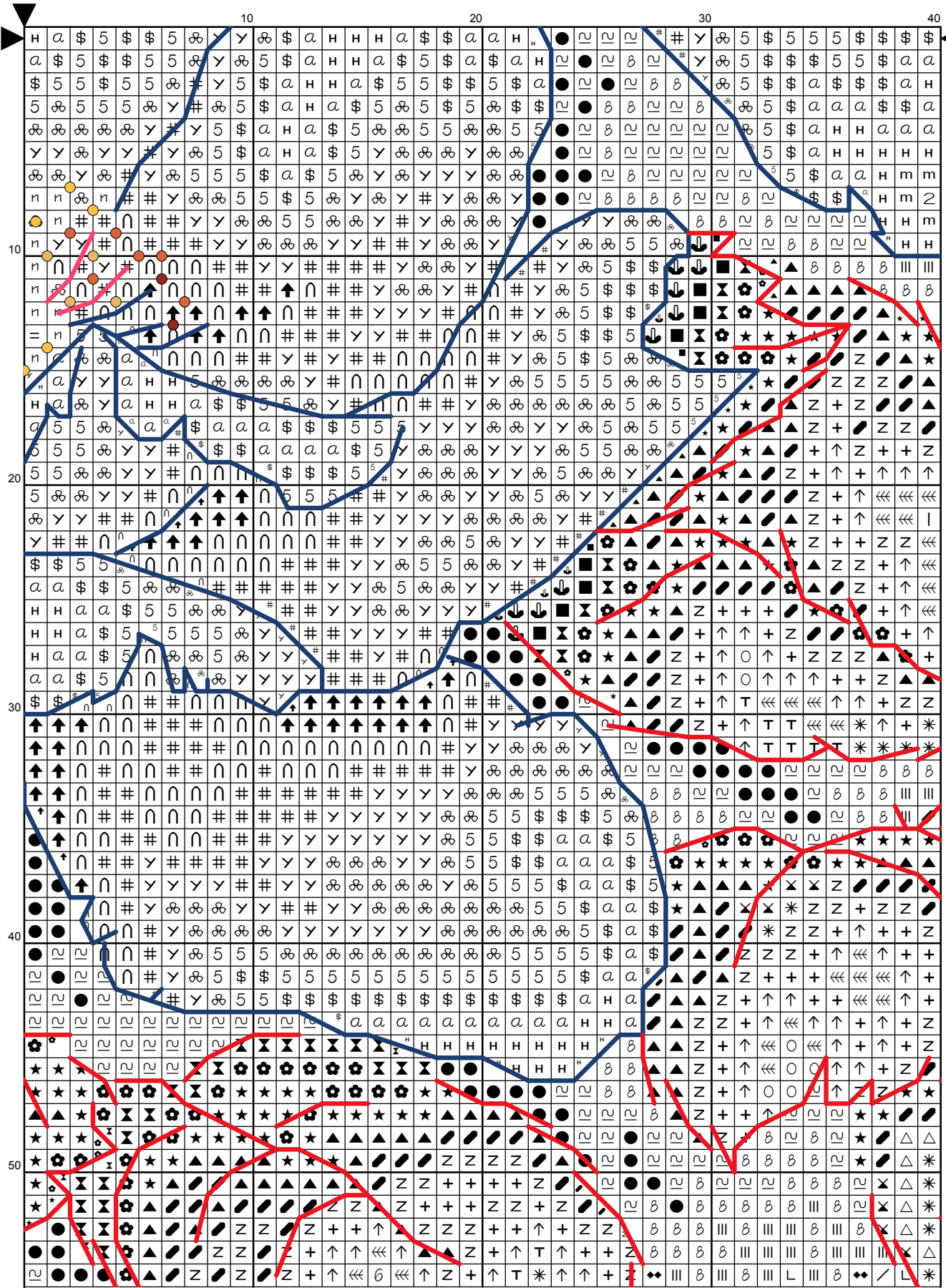


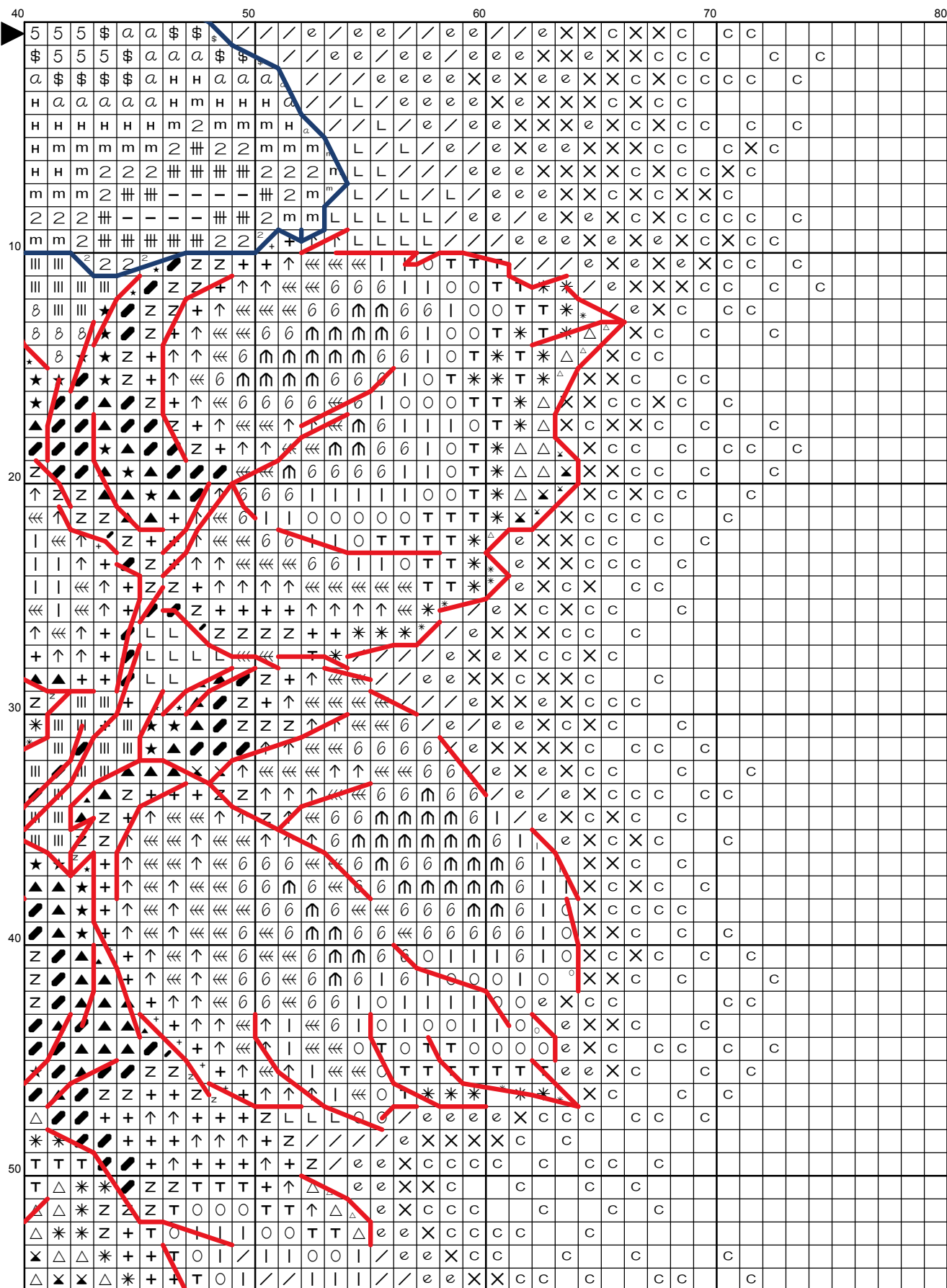
This image shows a large grid, 80 columns wide and 40 rows high. The grid is filled with various symbols, including letters (C, X, e), numbers (4, 2, 5), and special characters (X, #, \$, %, &). A prominent red path is drawn across the grid, starting from the bottom left and moving towards the top right. The path is composed of several segments, some of which are straight lines and others which are curved. The grid is divided into four quadrants by a vertical line at column 40 and a horizontal line at row 20. The symbols are distributed throughout the grid, with some appearing in clusters and others in isolation. The red path is a key feature, likely representing a solution or a specific sequence of moves in a puzzle.





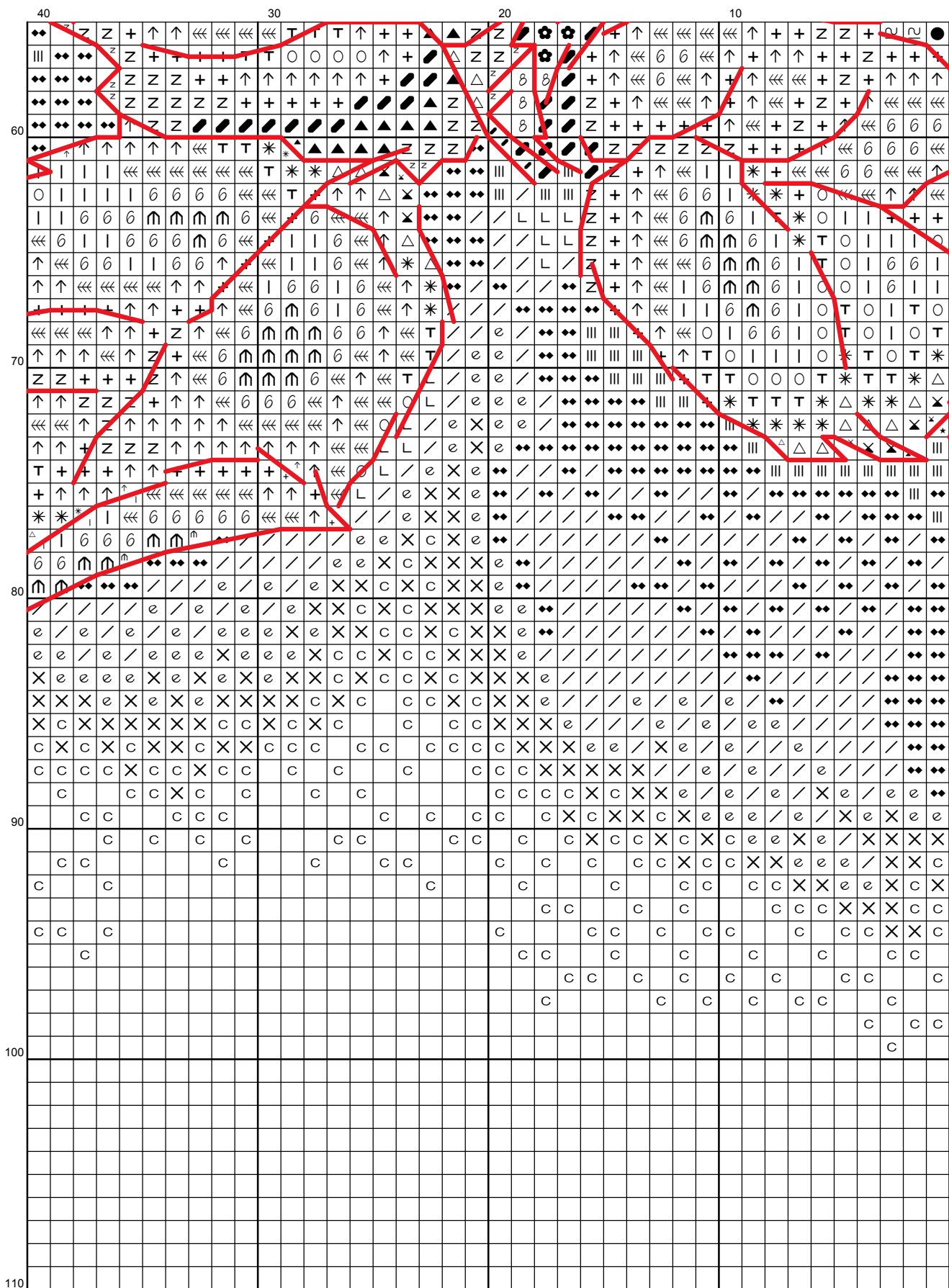


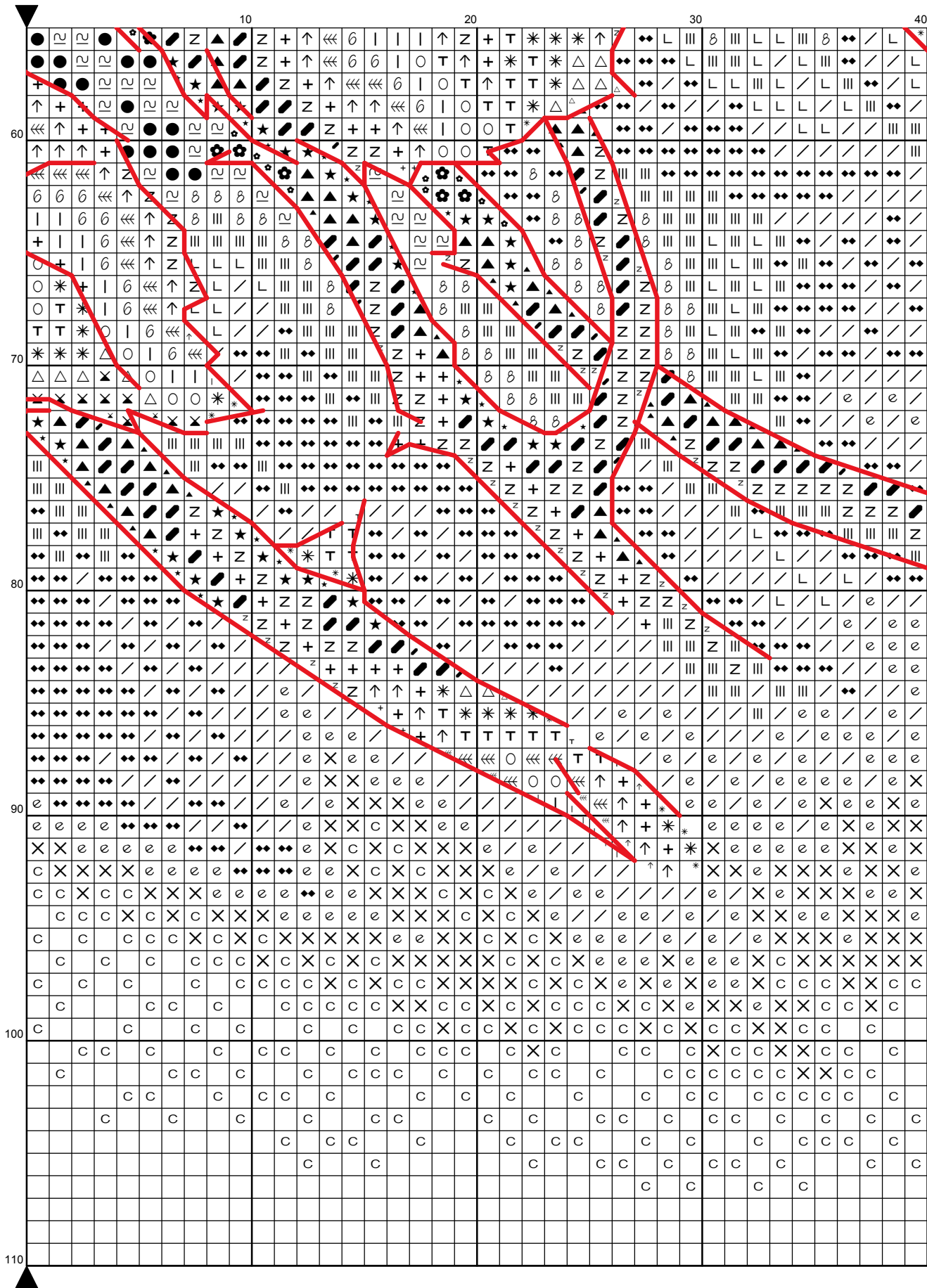




80 70 60 50 40

60 70 80 90 100 110





[illegible]



The grid is a 10x10 major grid with 10x10 minor grid. The grid is labeled with numbers 40, 50, 60, 70, 80, 90, 100, 110 on the left and 80, 70, 60, 50, 40 on the top. The grid contains various symbols including 'c', '4', 'v', 'm', 'z', and 'x'.

	80	70	60	50	40
110					
100					
90					
80					
70					
60					
50					
40					

[illegible]



[illegible]

[illegible]

[illegible]



[illegible]



[illegible]

[illegible]

[illegible]

[illegible]

80					C	C		C	C	C	e	/	e	/	/	/	/	/	/	/	e	e	/	♦♦	/	e	/	/	/	L	L	L	/	♦♦	III	III	40				
						C			C	C	C	e	e	/	e	e	e	e	e	e	e	/	♦♦	/	♦♦	♦♦	e	/	♦♦	/	/	/	/	/	♦♦	♦♦					
							C	C	X	e	e	e	e	e	e	/	/	e	e	e	e	e	/	/	♦♦	e	/	♦♦	♦♦	/	/	/	/	/	♦♦	♦♦					
					C	C		C	e	X	X	X	X	X	e	/	/	e	e	e	e	e	e	/	/	♦♦	e	/	♦♦	♦♦	♦♦	♦♦	/	/	/	♦♦					
60					C		C	X	X	C	X	e	e	e	e	e	e	e	e	e	e	e	/	♦♦	♦♦	/	♦♦	e	/	♦♦	♦♦	♦♦	♦♦	♦♦	♦♦						
						C		C	e	e	e	X	X	X	X	X	X	C	C	e	e	X	X	e	/	/	e	/	/	/	/	/	/	/	♦♦	♦♦					
							C	e	e	X	X	X	X	X	X	X	C	C	e	e	e	X	X	X	X	C	e	e	/	e	/	/	/	/	/	。	O	O			
							C	X	X	X	X	X	X	X	X	X	C	e	e	e	X	X	X	X	C	C	C	C	e	e	e	/	e	/	/	/	₊	T	T		
					C		C	X	C	C	C	X	X	C	C	e	e	X	X	X	X	X	X	X	C	C	C	X	X	X	e	e	e	e	/	₊	T	+	↑	↑	
						C		C	C		C	C	C	C	X	X	X	X	X	X	X	X	X	C	C		X	C	C	C	X	C	X	X	X	₊	+	+	+	+	+
							C		C		C	C	X	C	C	X	X	X	C	C	X	C		C		C	C	C	X	C	X	X	*	△	△	*	+	+			
					C	C		C		C		C	C	C	C	C	C	C	C	C	C	C	C		C		C	C	C	X	C	₊	+	*	△	△	*	+			
70						C		C		C	C	C			C	C		C	C	C		C	C		C	C		C	C	C	X	Z	+	*	△	*	+	↑			
							C		C	C	C			C			C		C	C		C	C		C	C	C	X	X	Z	+	Z	+	+	+	+	+				
										C	C	C			C	C					C				C	C		C	X	Z	Z	Z	Z	*	*	*					
							C		C			C	C								C				C	C		C	X	₊	X	Z	Z	*	△	+	+				
								C	C			C	C												C		C	C	C	X	₊	X	X	X	△	△	+	↑	↑		
										C	C														C		C	C	C	X	*	△	X	X	△	+	↑	≡			
																									C		C	C	C	X	*	△	X	X	△	+	↑	↑			
																									C		C		C	X	*	△	X	△	T	↑	T				
																									C			C		X	e	*	*	△	*	T	T	*			
																									C		C	C	C	X	e	△	△	*	*	T	*	△			
80					C	C						C			C	C	C	C	X	C			C		X	C	X	e	₊	X	C	X	e	₊	X	C	△				
						C		C	C			C			C	C		C	C	C	X	C		C	C	X	C	C	X	C	e	*	₊	X	△	*		6			
						C			C		C	C	C	C	X	X	X	X	X	X	X	X	C	X	X	C	X	X	C	X	C	e	₊	X	△	*		6	6		
							C	C	X	C	C	C	X	X	X	X	e	X	X	X	X	X	X	X	X	C	C	C	C	X	e	₊	X	△	₊		e	/			
							C	C	X	X	C	X	C	X	X	X	e	e	e	e	e	e	e	e	e	e	X	X	X	X	e	△	△	e	e	e					
						C	C		C	C	C	X	C	X	C	X	X	X	e	e	e	e	e	e	X	X	X	X	C	X	C	C	△	e	e	X	e				
							C	C	C	X	C	X	C	X	X	X	C	X	X	e	e	e	X	X	C	C	X	C	X	C	X	△	△	e	X	X	X				
						C		C	C		C	C	C	X	C	X	C	X	C	X	C	X	C	C	X	X	C		C	X	X	e	e	X	C	X	C				
							C			C		C	X	X	C		C	X	C	C	X	C	C	C		C	C		C		C	X	X	X	C	X	C	X			
							C		C	C	C	C		C	C		C	C		C	C		C	C		C		C		C		C	C	X	X	C	C	C			
90									C	C		C	C		C	C		C	C		C	C		C	C					C	X	C	C			C					
										C		C		C							C			C		C									C	C					

110



[illegible]



Ключ к схеме «Желтая роза»  
 Дизайнер Екатерина Волкова  
<http://appolinaria74.gallery.ru>  
 e-mail: p.appolinaria@gmail.com

Вышивать желательно на ткани равномерного плетения  
 белого или молочного цвета 28 или 32 каунта

Размер вышивки 156 x 213 крестиков или 29 x 39 см

Крест выполняется в 2 нити

Символ	ДМС	Символ	ДМС
#	402	●	921
*	452	2	951
○	453	6	3072
↓	520	✕	3362
↙	522	★	3363
+	523	↑	3776
↑	524	—	3823
\$	676	∞	3856
n	945	✕	3861
=	743	v	3865
3	744		

Смешанные цвета.

Берем 1 ниточку одного цвета и 1 ниточку другого.  
 Вышиваем, сложив их вместе.

Символ	ДМС	Символ	ДМС
T	452+453	Y	3856+402
■	3362+520	I	3072+453
≡	3072+524	Z	523+522
m	951+945	a	945+676
≡	3823+951	5	743+744
▲	522+3363	✿	3363+3362
4	3865+3823	∩	402+3776
n	743+3856	5	676+3856
∩	3072+3865	△	452+3861

Полу-крест «/» выполняется в 1 нить

Символ	ДМС	Символ	ДМС
♦♦	451	X	948
/	453	c	3770
III	522	e	3774
L	524		

Полу-крест «\» выполняется в 2 нити

Символ	ДМС	Символ	ДМС
●	520	≈	3363
8	522		

«Назад иголку» или бэкстич выполняется в 1 нить

	DMC 646		DMC 780
	DMC 729		DMC 3021

«Французские узелки» выполняются в 1 нить

	DMC 676		DMC 919
	DMC 743		DMC 922