

XUMEDA

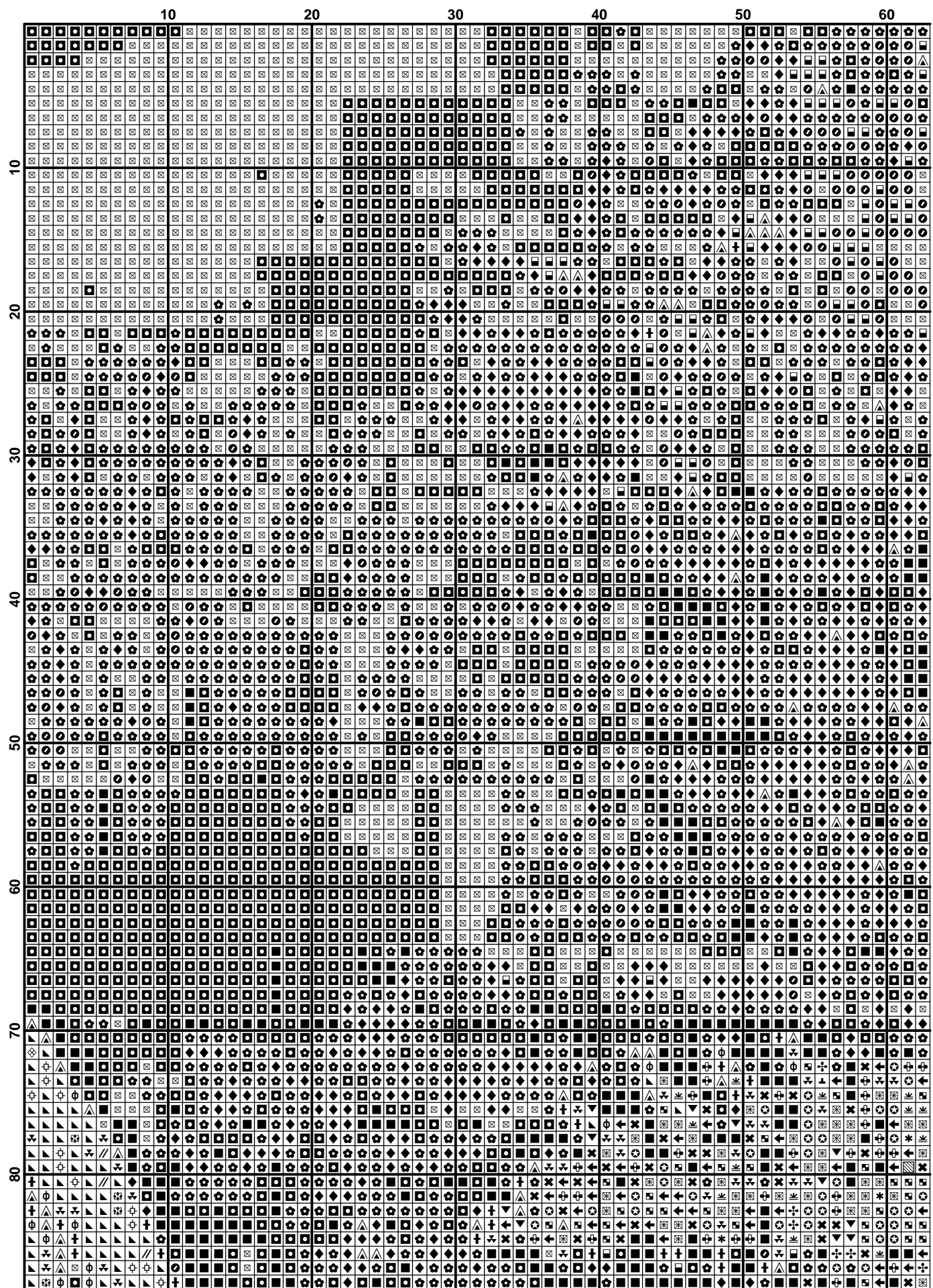
По картине художника JONI JOHNSON GODSY

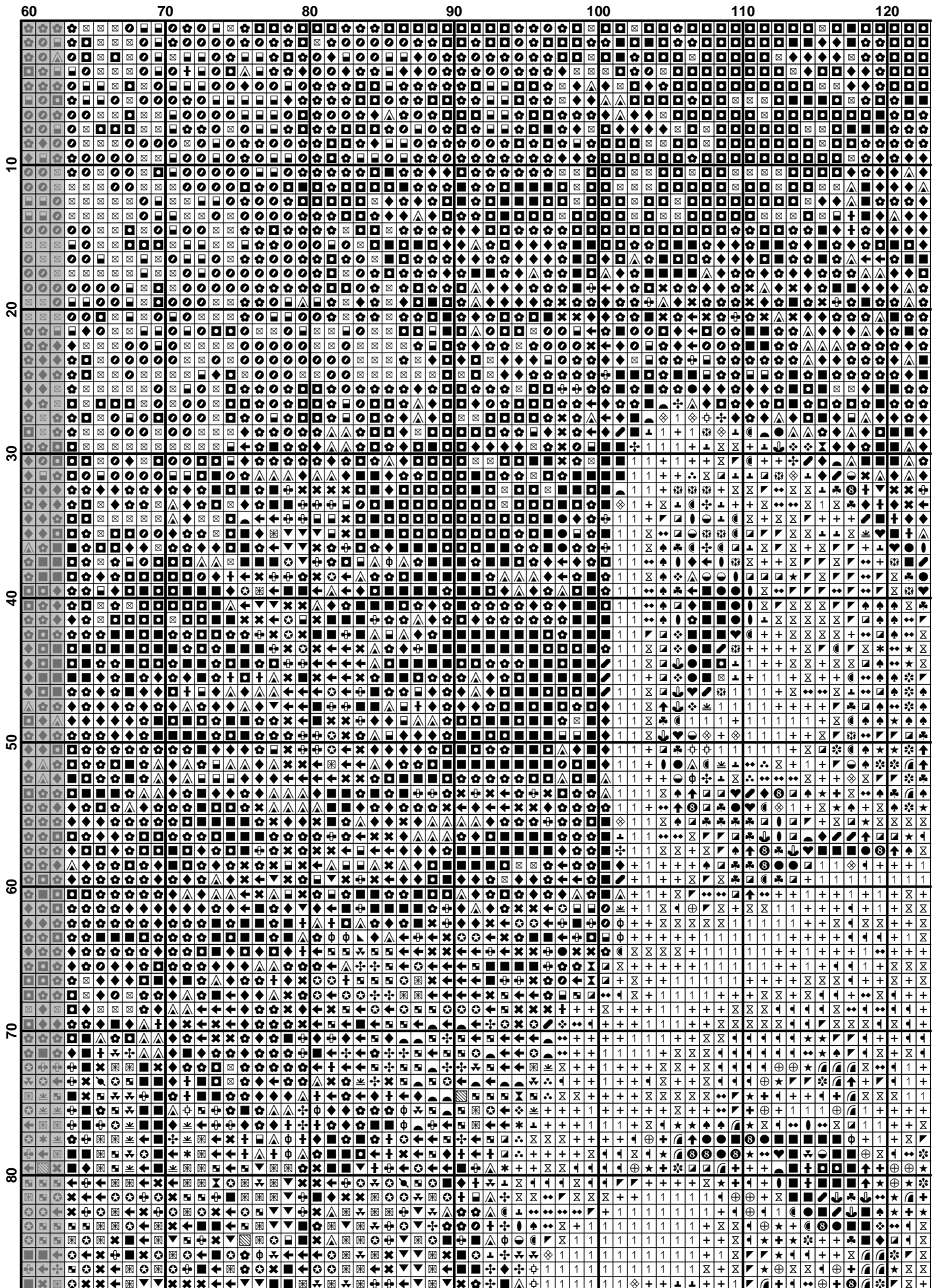
«В панорамнике»

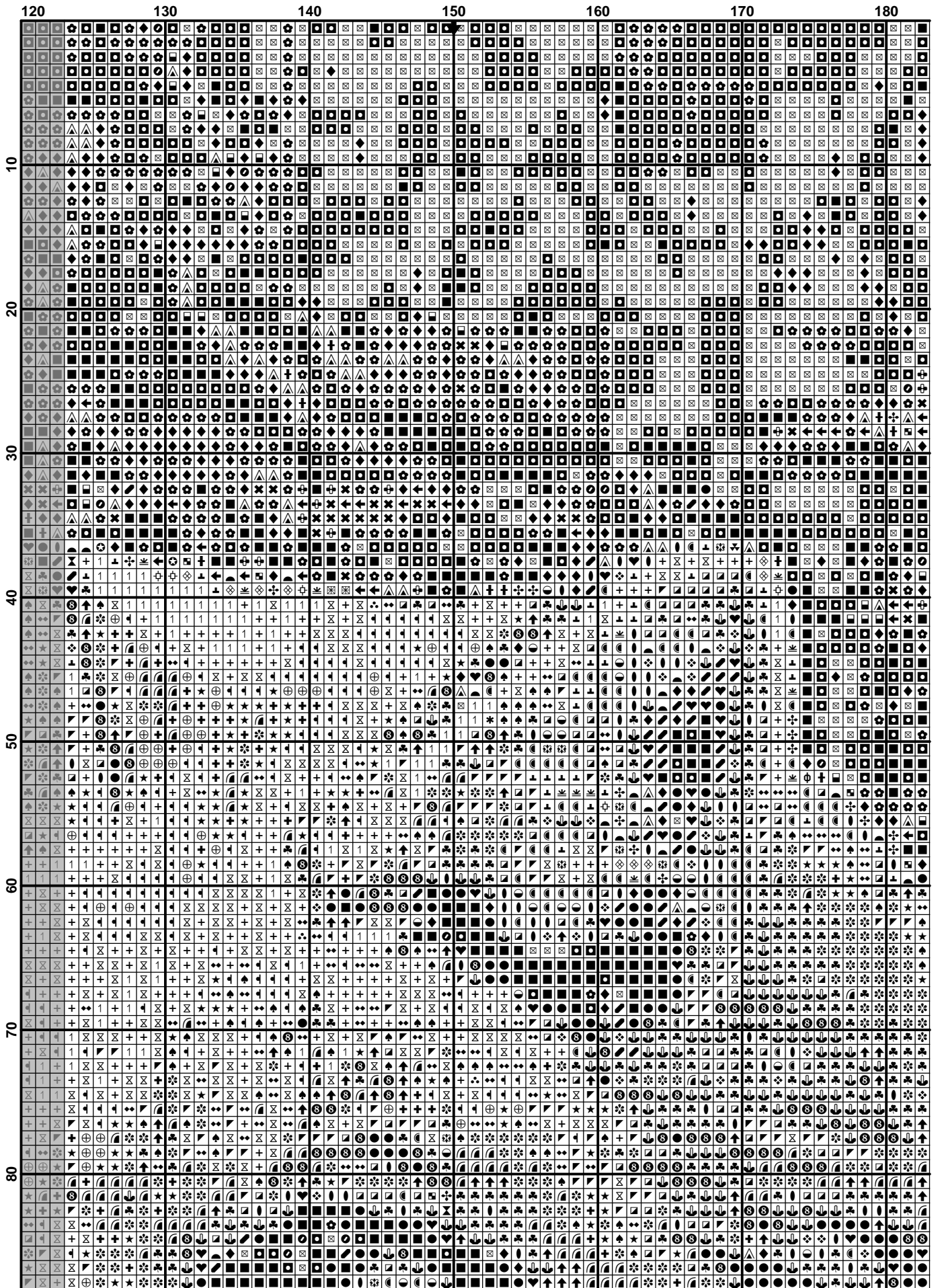
Finished Design Size 300w X 400h Stitches

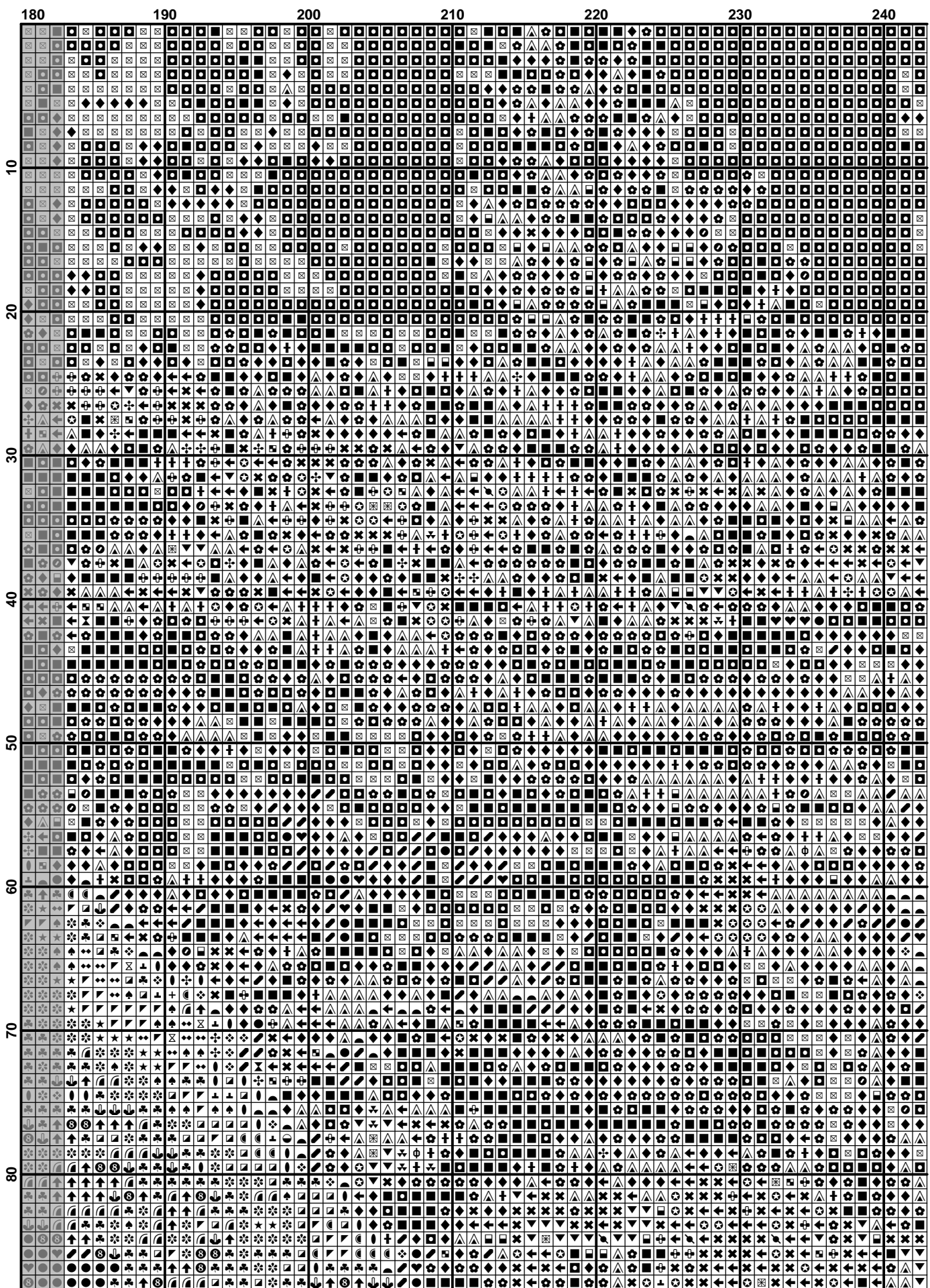
2015 г.

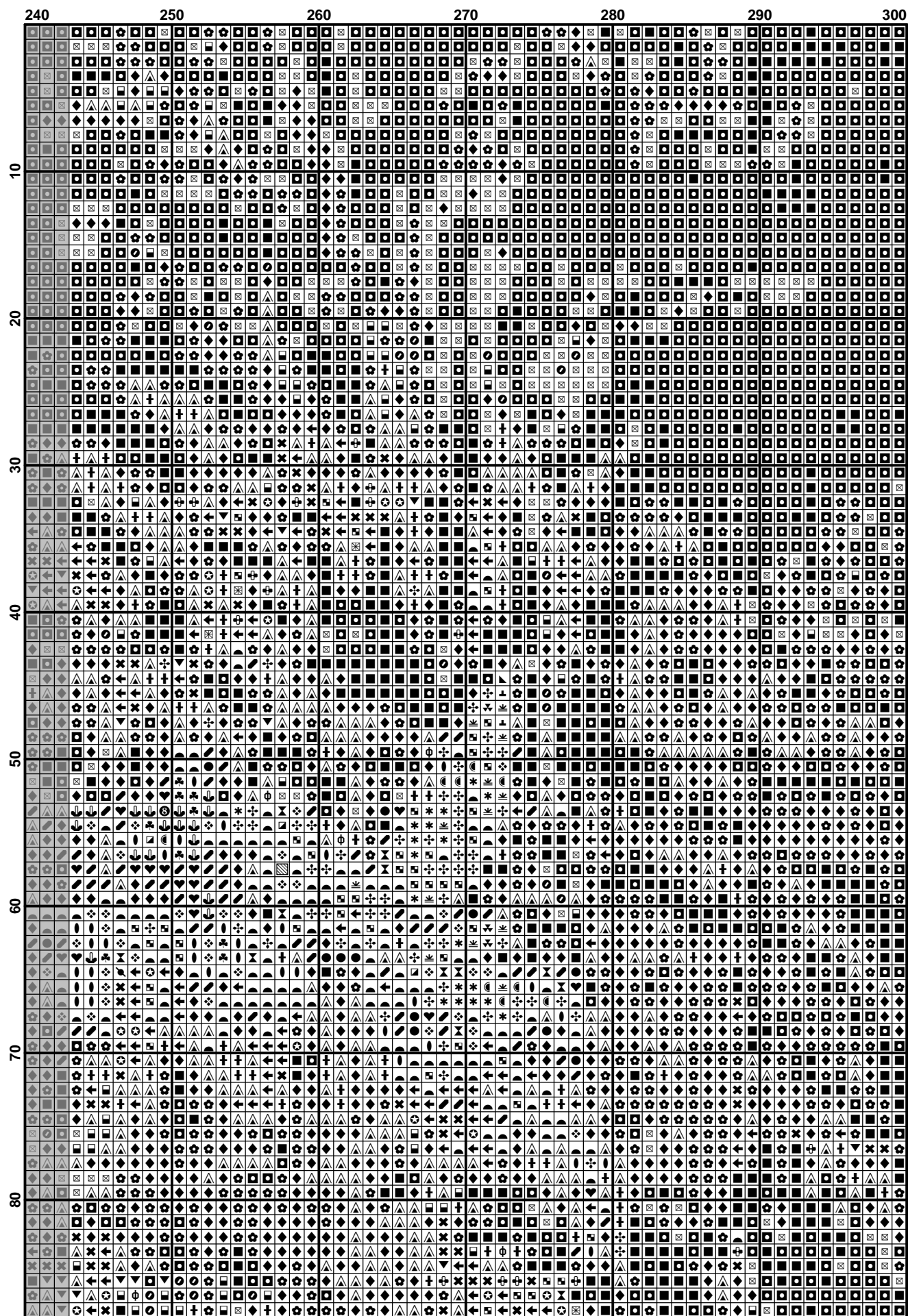




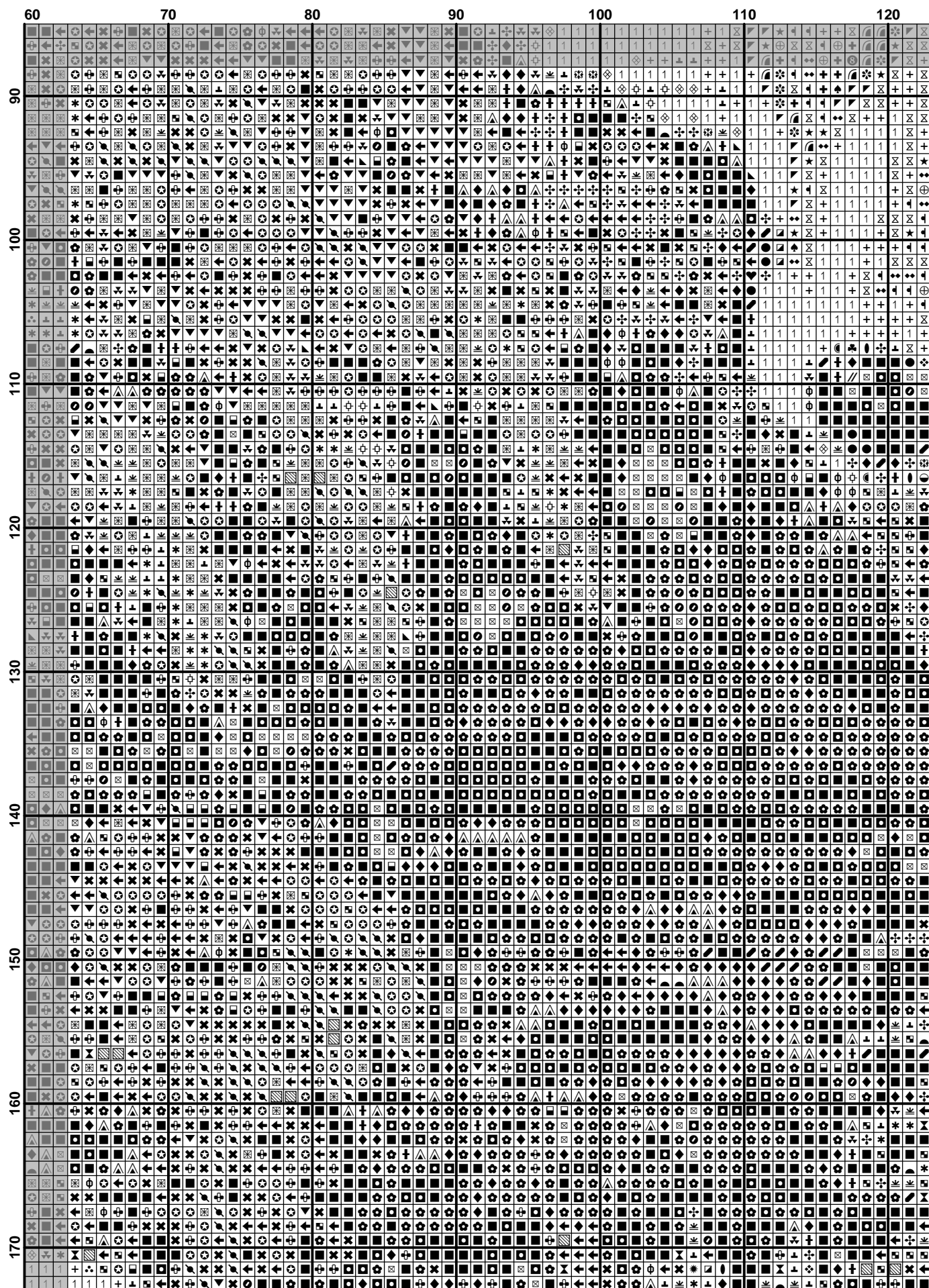


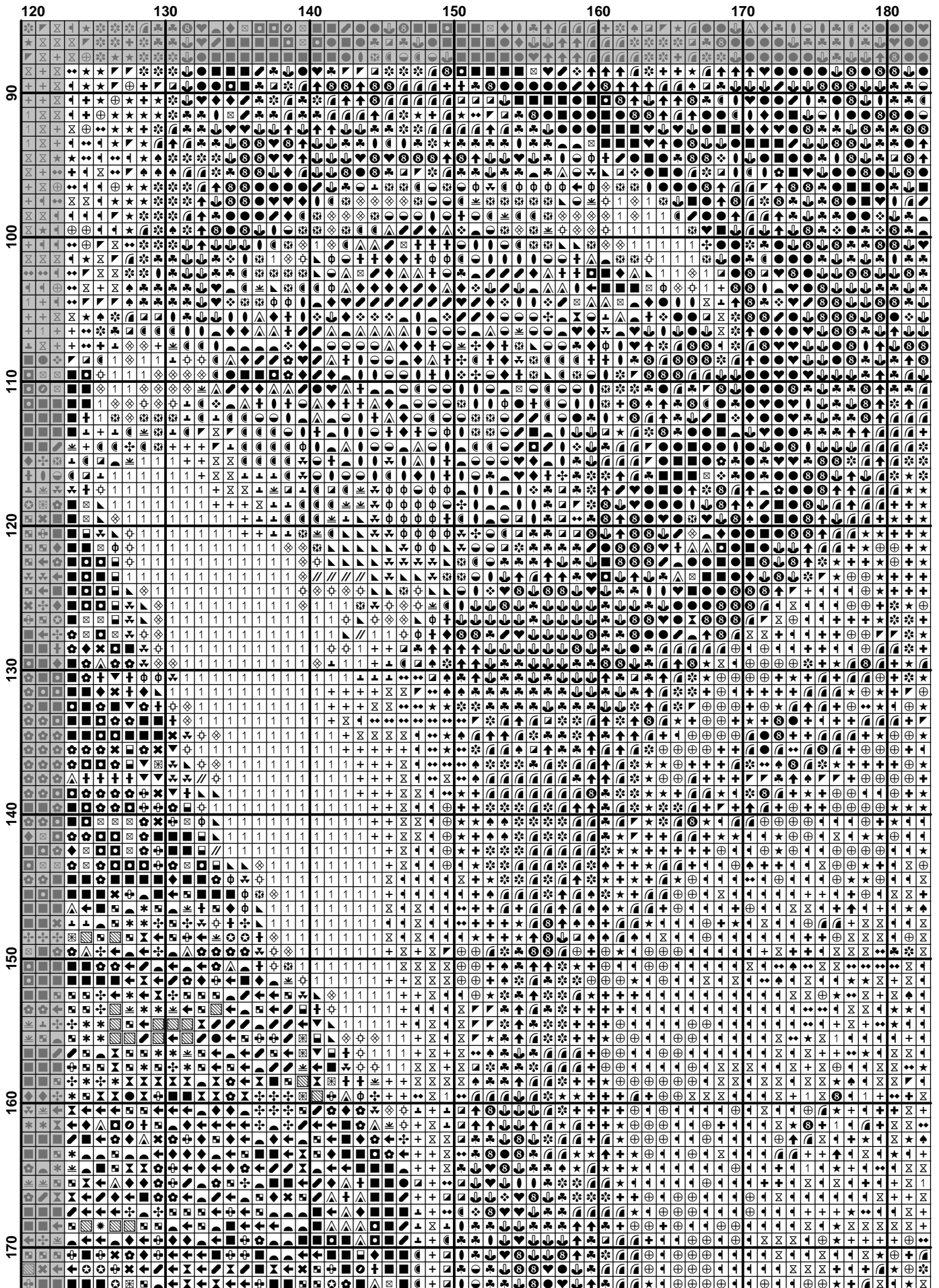


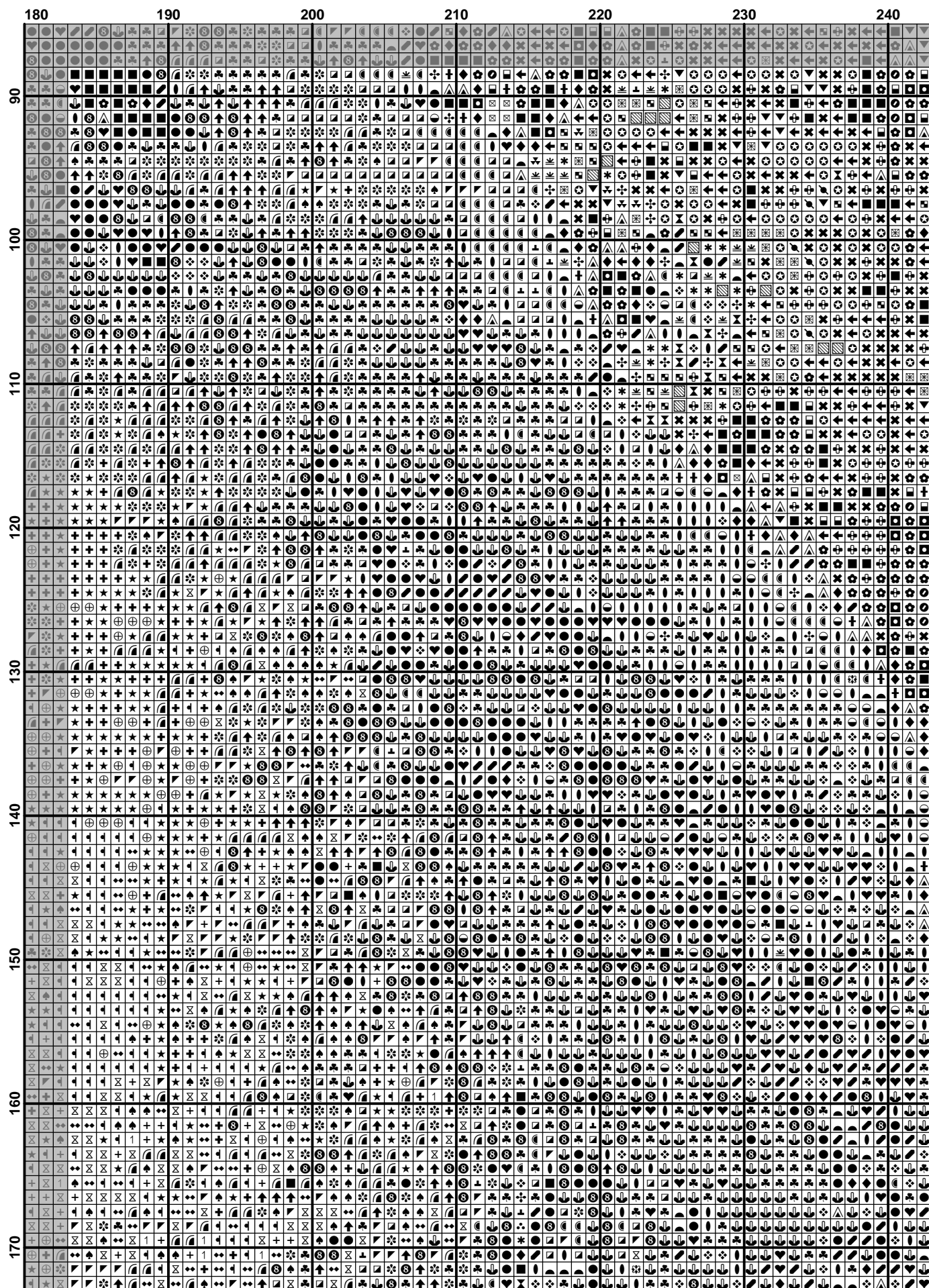


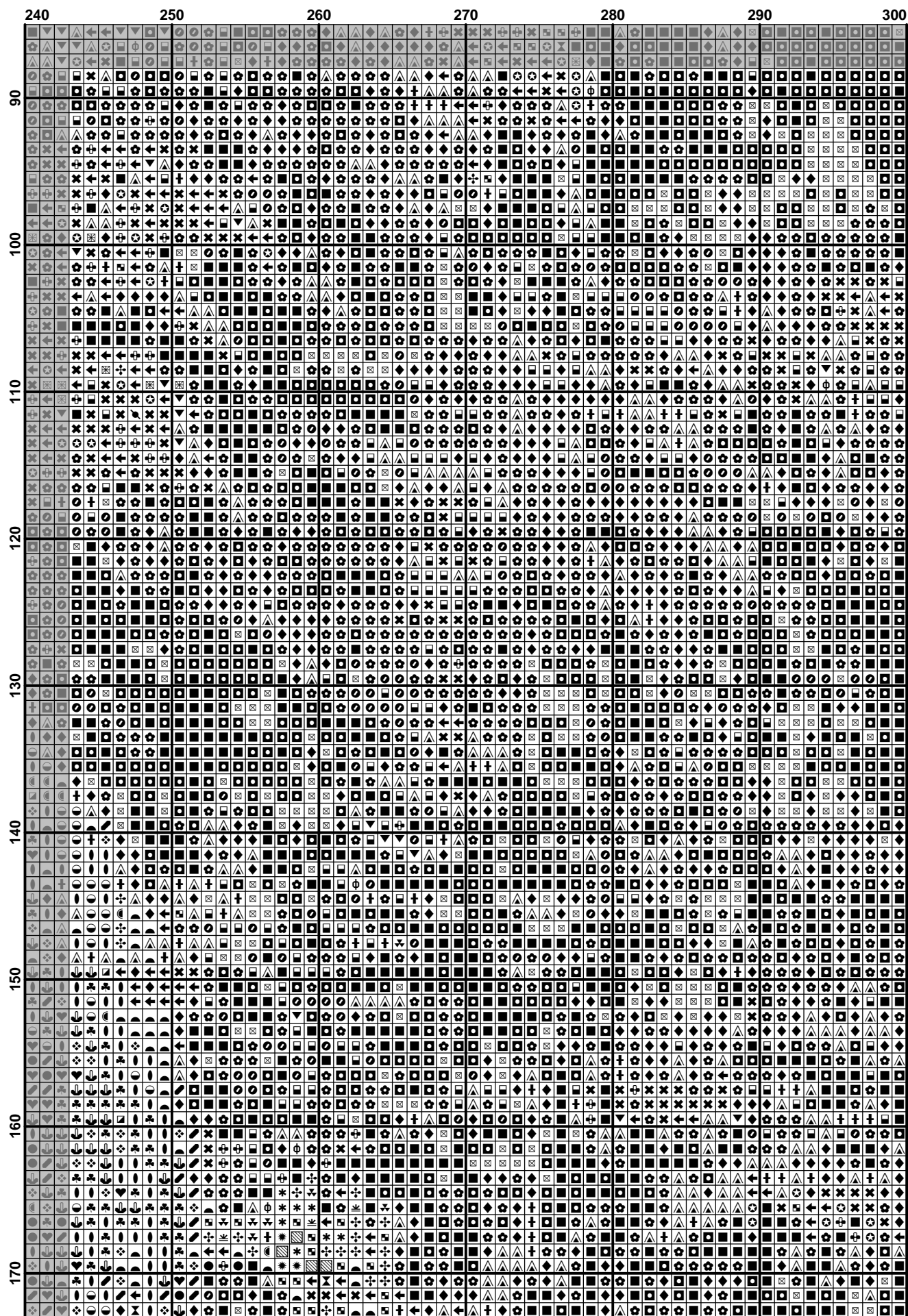


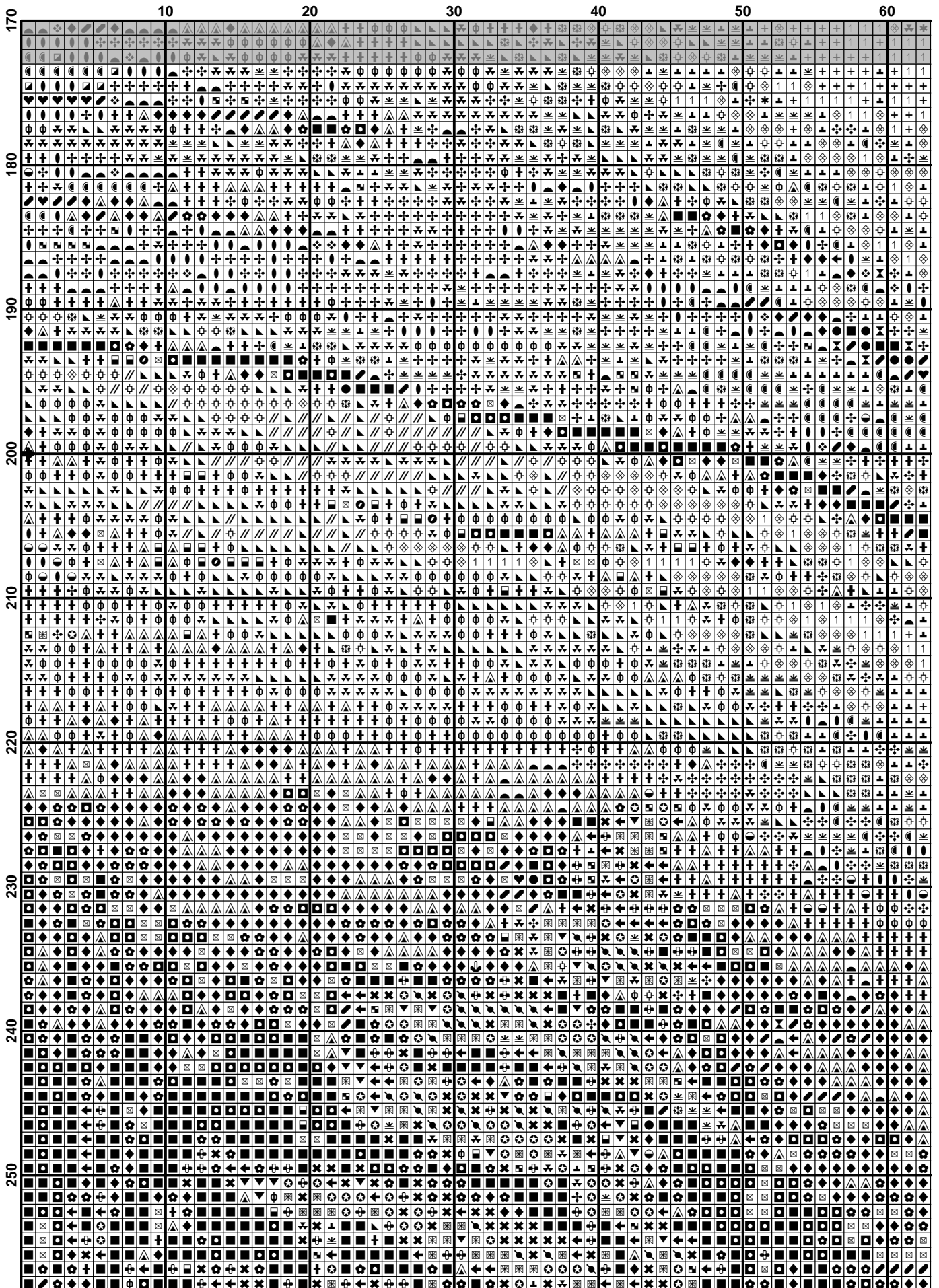
	10	20	30	40	50	60
90	▲	▲	▲	▲	▲	▲
91	▲	▲	▲	▲	▲	▲
92	▲	▲	▲	▲	▲	▲
93	▲	▲	▲	▲	▲	▲
94	▲	▲	▲	▲	▲	▲
95	▲	▲	▲	▲	▲	▲
96	▲	▲	▲	▲	▲	▲
97	▲	▲	▲	▲	▲	▲
98	▲	▲	▲	▲	▲	▲
99	▲	▲	▲	▲	▲	▲
100	▲	▲	▲	▲	▲	▲
101	▲	▲	▲	▲	▲	▲
102	▲	▲	▲	▲	▲	▲
103	▲	▲	▲	▲	▲	▲
104	▲	▲	▲	▲	▲	▲
105	▲	▲	▲	▲	▲	▲
106	▲	▲	▲	▲	▲	▲
107	▲	▲	▲	▲	▲	▲
108	▲	▲	▲	▲	▲	▲
109	▲	▲	▲	▲	▲	▲
110	▲	▲	▲	▲	▲	▲
111	▲	▲	▲	▲	▲	▲
112	▲	▲	▲	▲	▲	▲
113	▲	▲	▲	▲	▲	▲
114	▲	▲	▲	▲	▲	▲
115	▲	▲	▲	▲	▲	▲
116	▲	▲	▲	▲	▲	▲
117	▲	▲	▲	▲	▲	▲
118	▲	▲	▲	▲	▲	▲
119	▲	▲	▲	▲	▲	▲
120	▲	▲	▲	▲	▲	▲
121	▲	▲	▲	▲	▲	▲
122	▲	▲	▲	▲	▲	▲
123	▲	▲	▲	▲	▲	▲
124	▲	▲	▲	▲	▲	▲
125	▲	▲	▲	▲	▲	▲
126	▲	▲	▲	▲	▲	▲
127	▲	▲	▲	▲	▲	▲
128	▲	▲	▲	▲	▲	▲
129	▲	▲	▲	▲	▲	▲
130	▲	▲	▲	▲	▲	▲
131	▲	▲	▲	▲	▲	▲
132	▲	▲	▲	▲	▲	▲
133	▲	▲	▲	▲	▲	▲
134	▲	▲	▲	▲	▲	▲
135	▲	▲	▲	▲	▲	▲
136	▲	▲	▲	▲	▲	▲
137	▲	▲	▲	▲	▲	▲
138	▲	▲	▲	▲	▲	▲
139	▲	▲	▲	▲	▲	▲
140	▲	▲	▲	▲	▲	▲
141	▲	▲	▲	▲	▲	▲
142	▲	▲	▲	▲	▲	▲
143	▲	▲	▲	▲	▲	▲
144	▲	▲	▲	▲	▲	▲
145	▲	▲	▲	▲	▲	▲
146	▲	▲	▲	▲	▲	▲
147	▲	▲	▲	▲	▲	▲
148	▲	▲	▲	▲	▲	▲
149	▲	▲	▲	▲	▲	▲
150	▲	▲	▲	▲	▲	▲
151	▲	▲	▲	▲	▲	▲
152	▲	▲	▲	▲	▲	▲
153	▲	▲	▲	▲	▲	▲
154	▲	▲	▲	▲	▲	▲
155	▲	▲	▲	▲	▲	▲
156	▲	▲	▲	▲	▲	▲
157	▲	▲	▲	▲	▲	▲
158	▲	▲	▲	▲	▲	▲
159	▲	▲	▲	▲	▲	▲
160	▲	▲	▲	▲	▲	▲
161	▲	▲	▲	▲	▲	▲
162	▲	▲	▲	▲	▲	▲
163	▲	▲	▲	▲	▲	▲
164	▲	▲	▲	▲	▲	▲
165	▲	▲	▲	▲	▲	▲
166	▲	▲	▲	▲	▲	▲
167	▲	▲	▲	▲	▲	▲
168	▲	▲	▲	▲	▲	▲
169	▲	▲	▲	▲	▲	▲
170	▲	▲	▲	▲	▲	▲
171	▲	▲	▲	▲	▲	▲
172	▲	▲	▲	▲	▲	▲
173	▲	▲	▲	▲	▲	▲
174	▲	▲	▲	▲	▲	▲
175	▲	▲	▲	▲	▲	▲
176	▲	▲	▲	▲	▲	▲
177	▲	▲	▲	▲	▲	▲
178	▲	▲	▲	▲	▲	▲
179	▲	▲	▲	▲	▲	▲
180	▲	▲	▲	▲	▲	▲

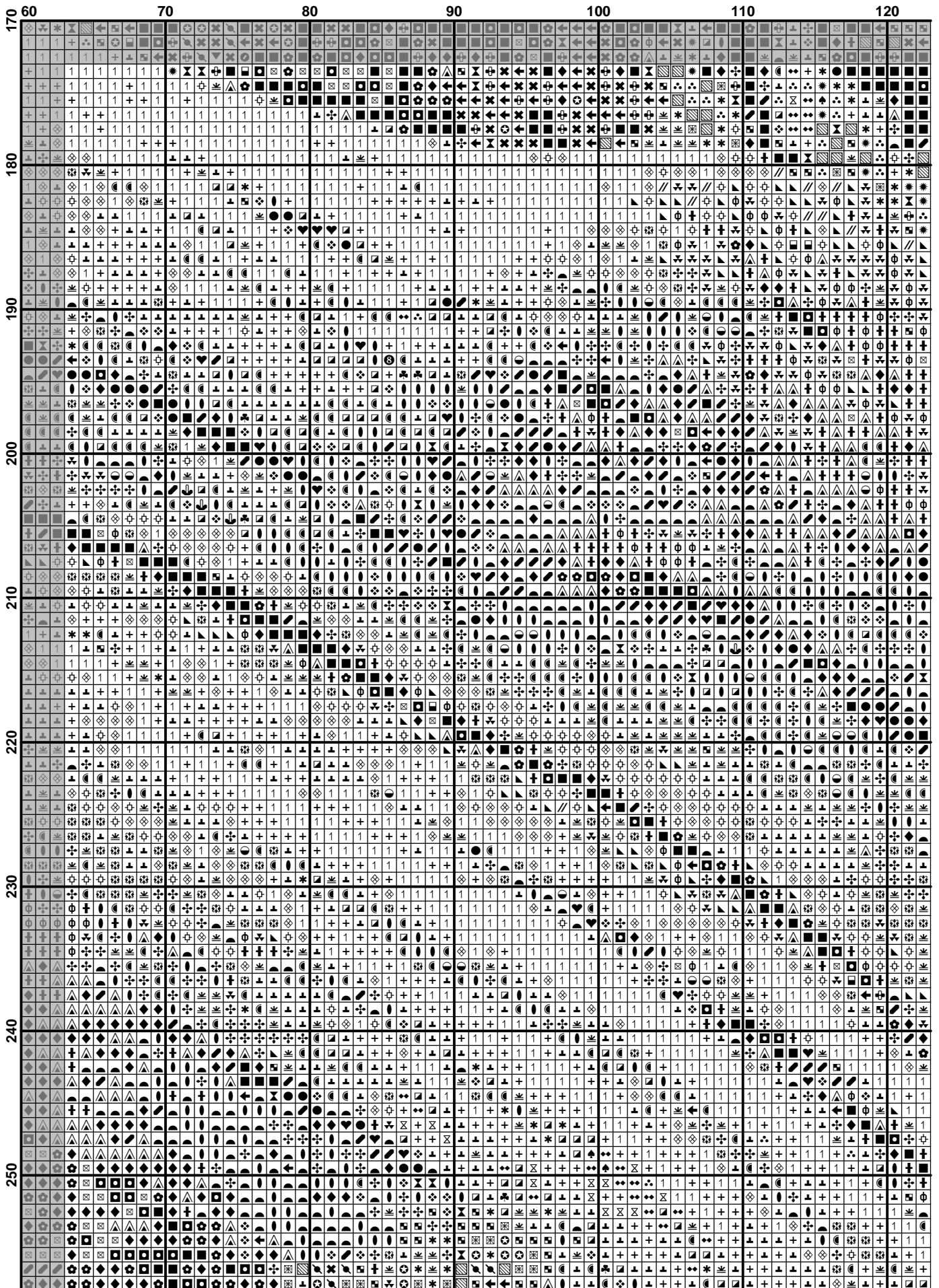


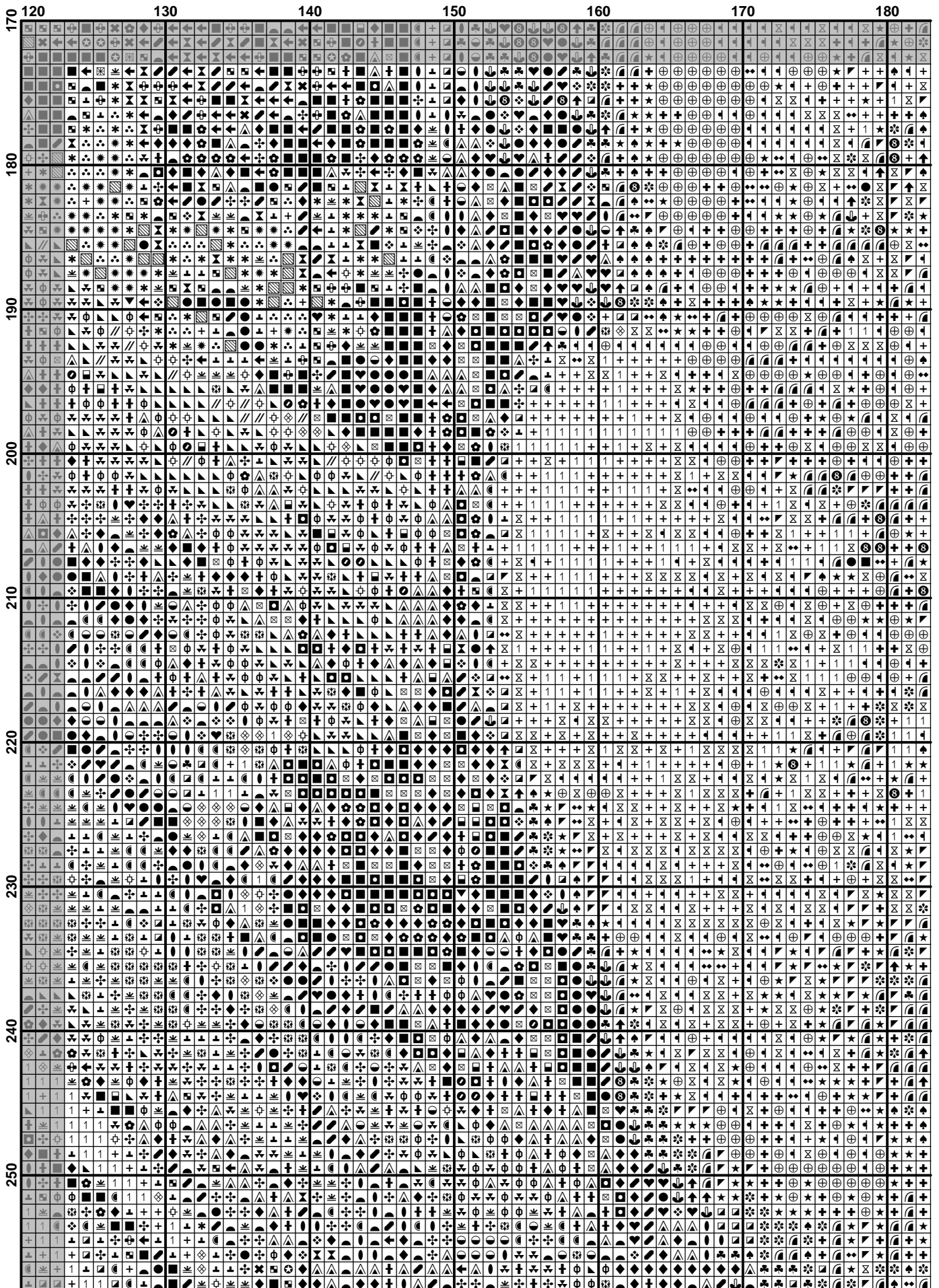


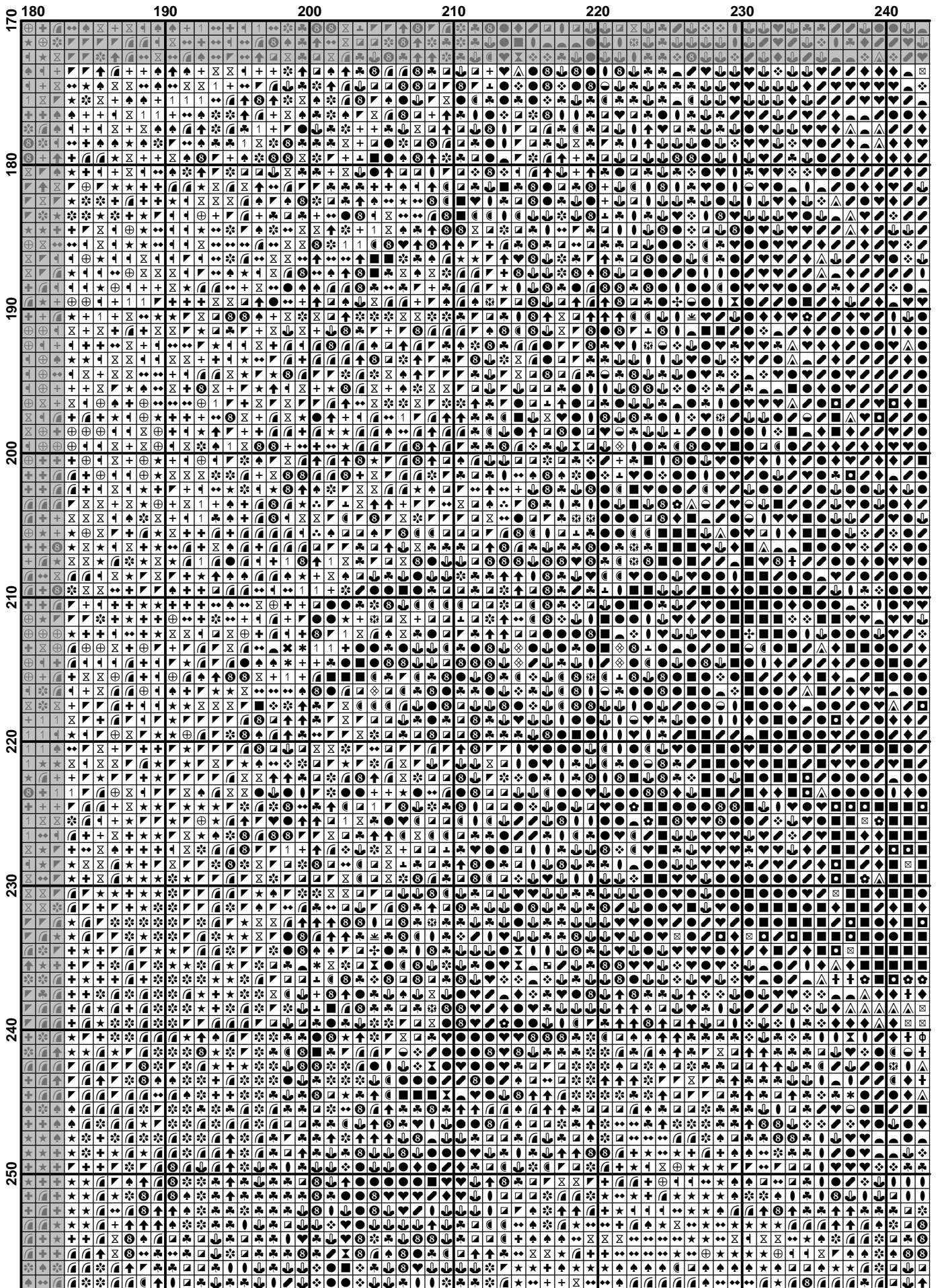


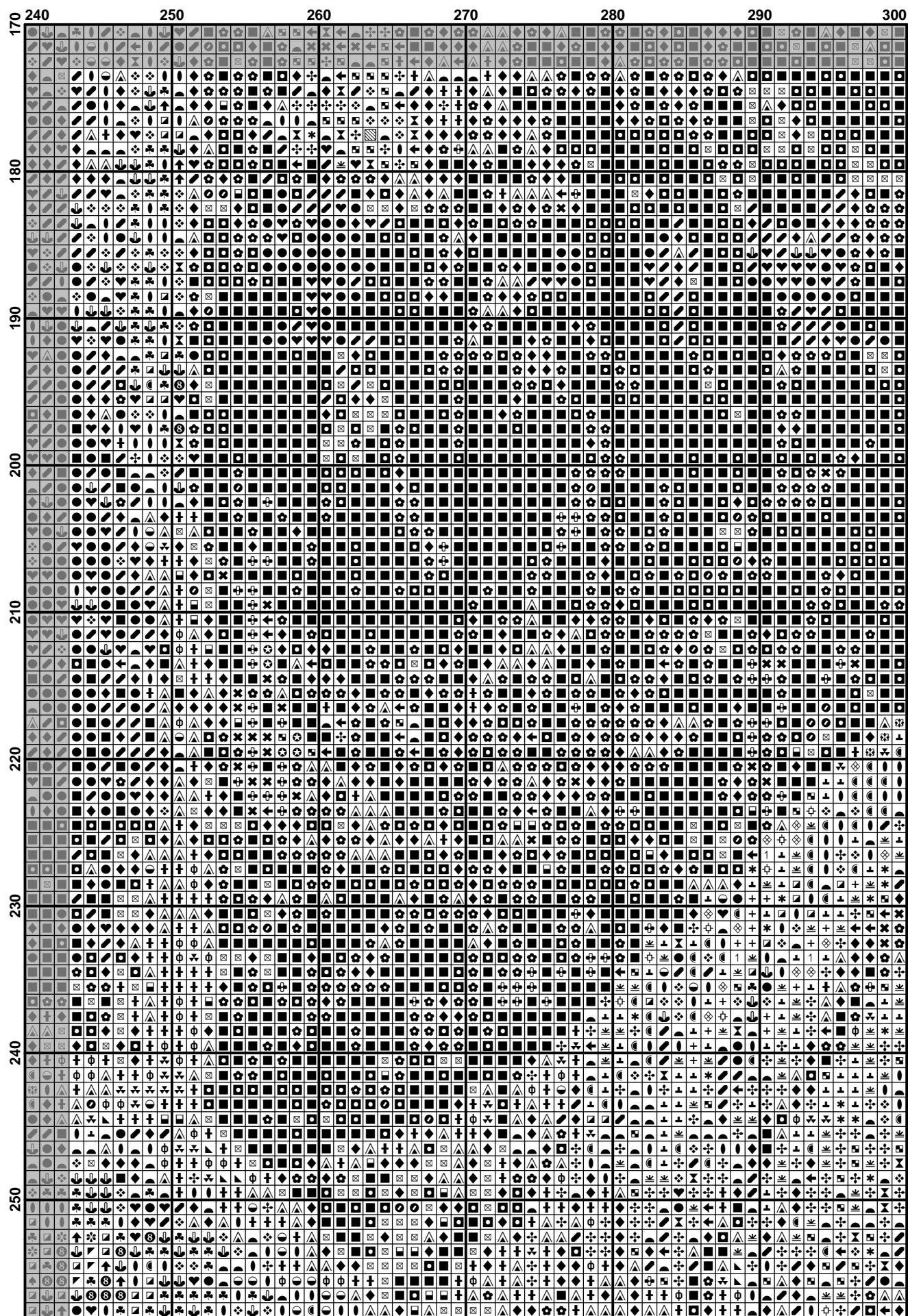


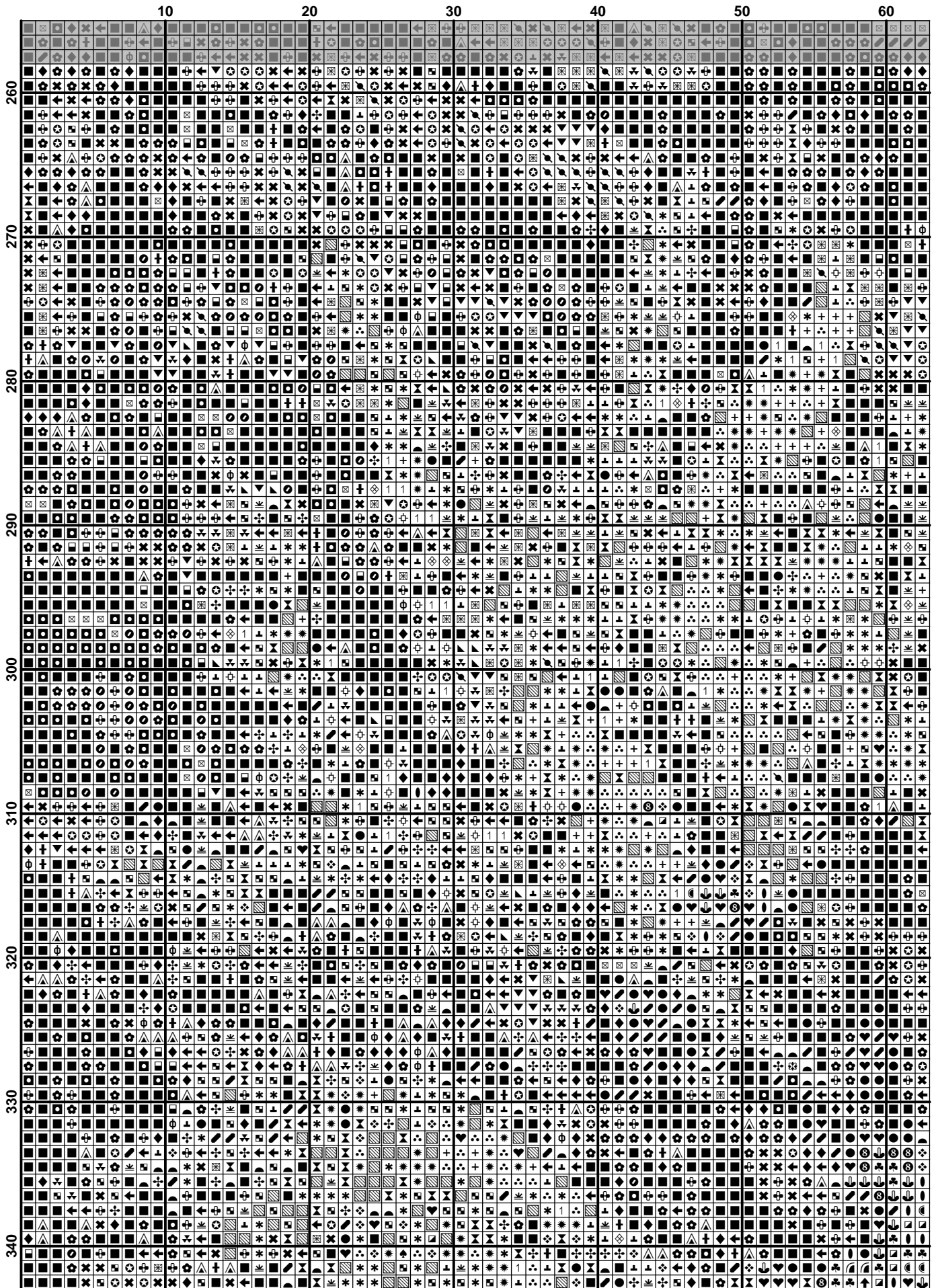


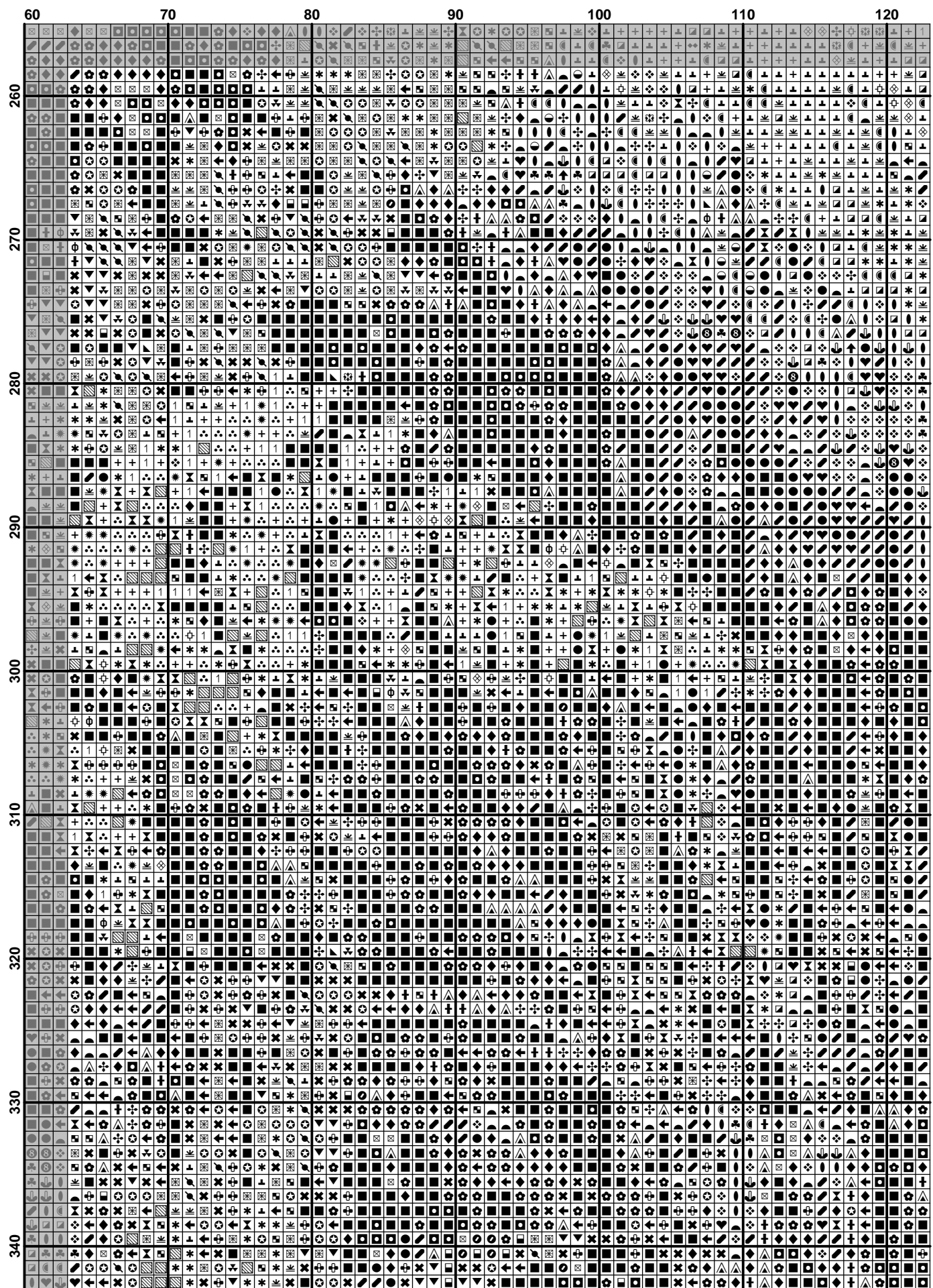




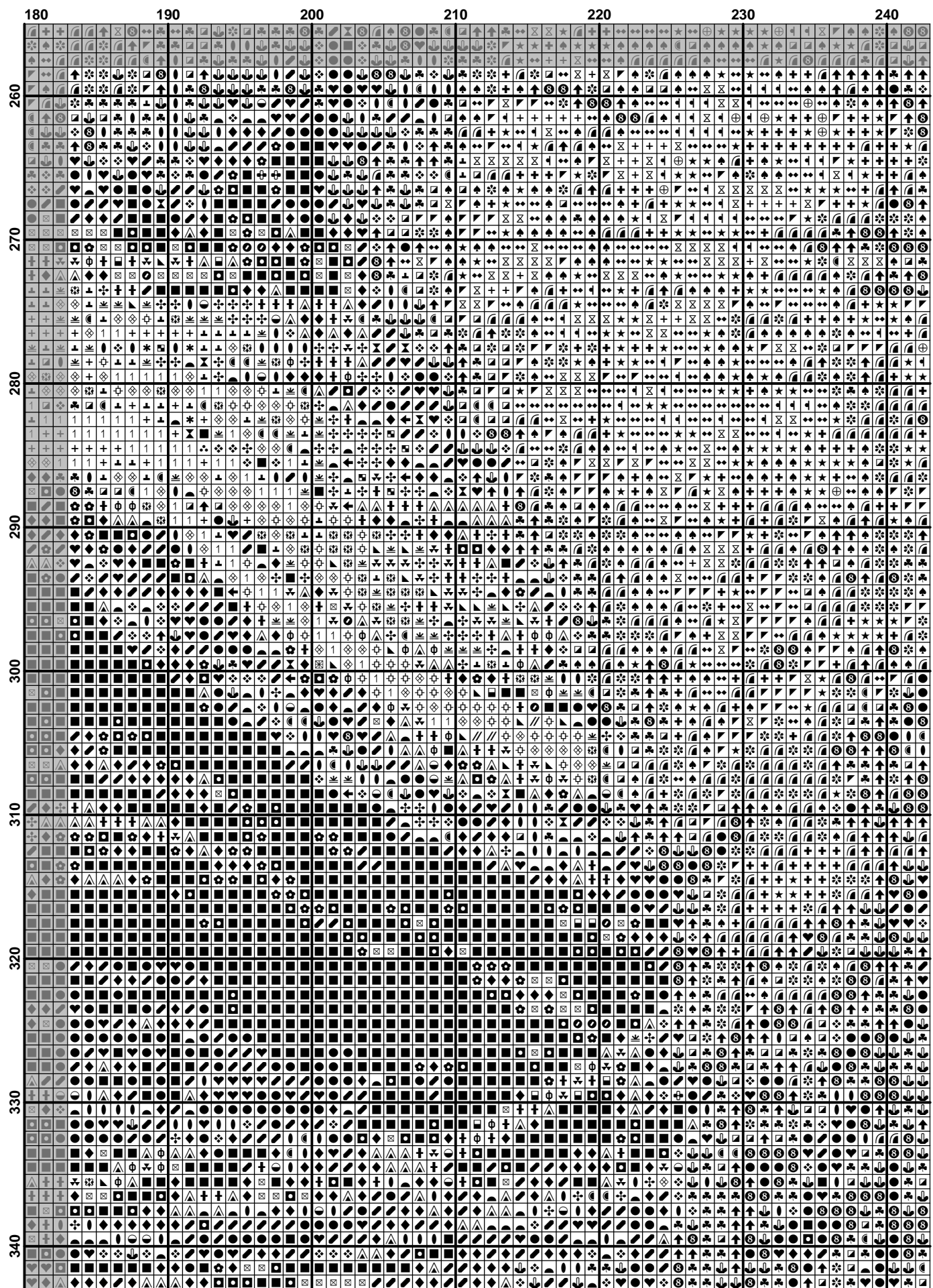


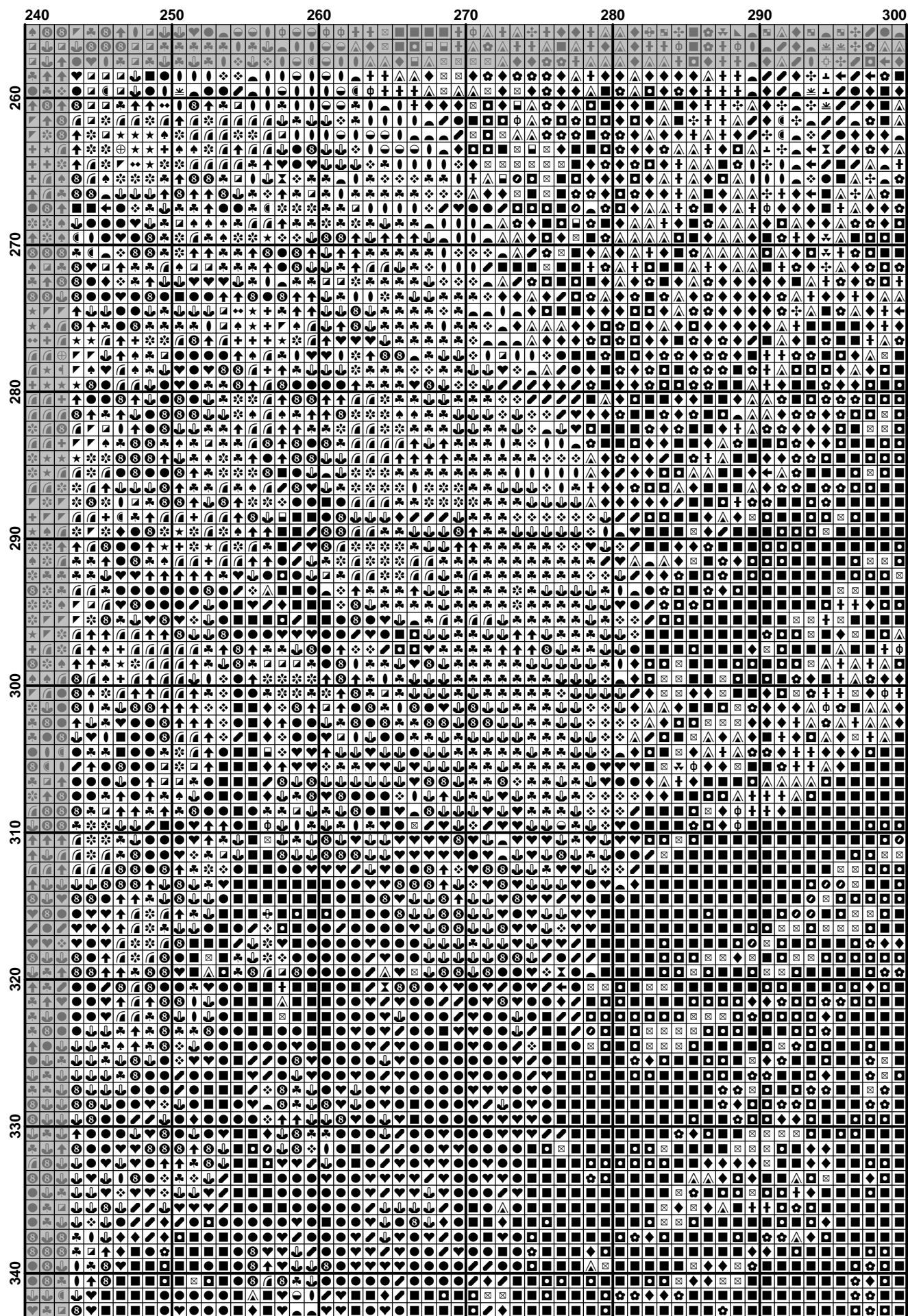


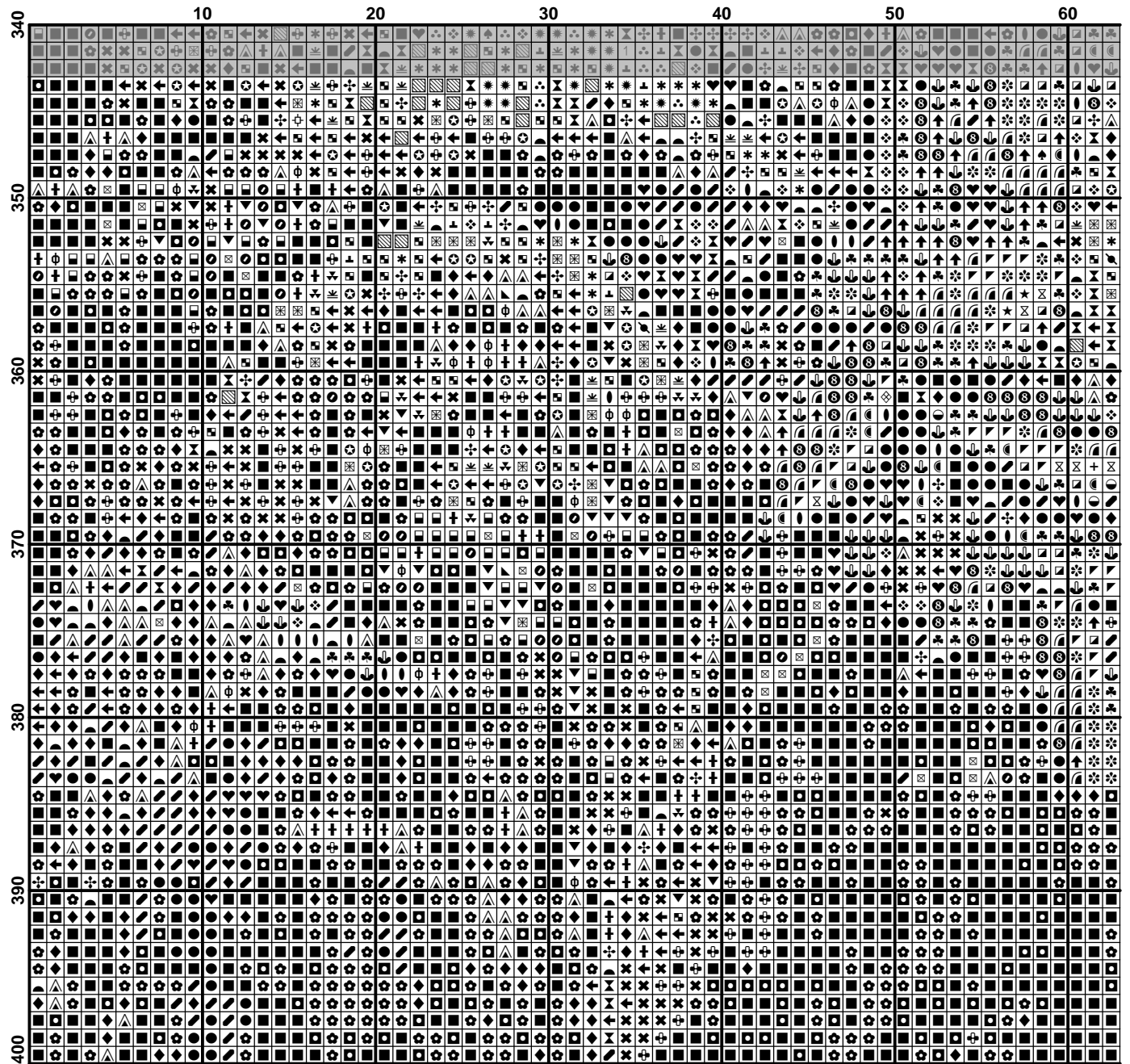


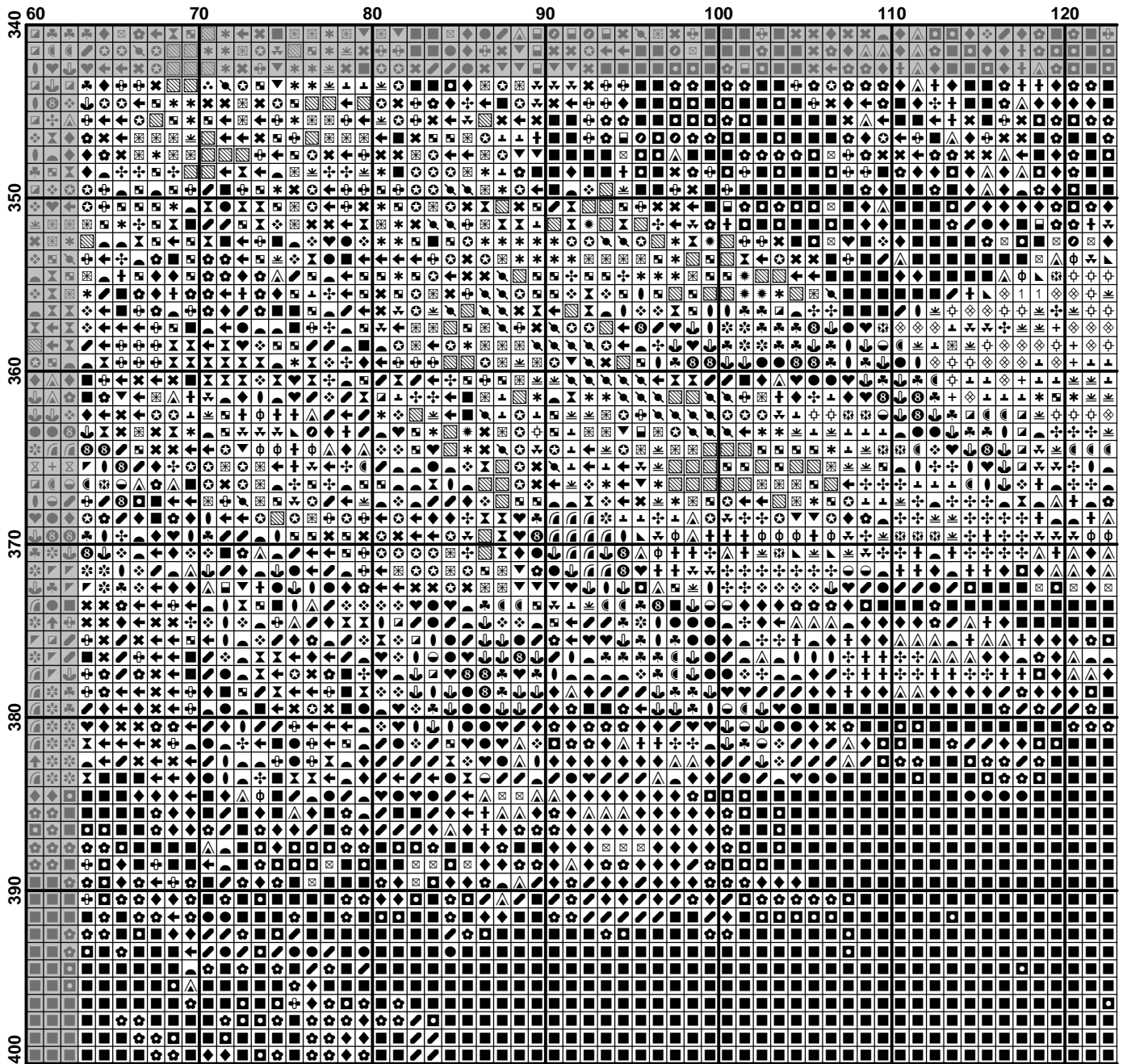


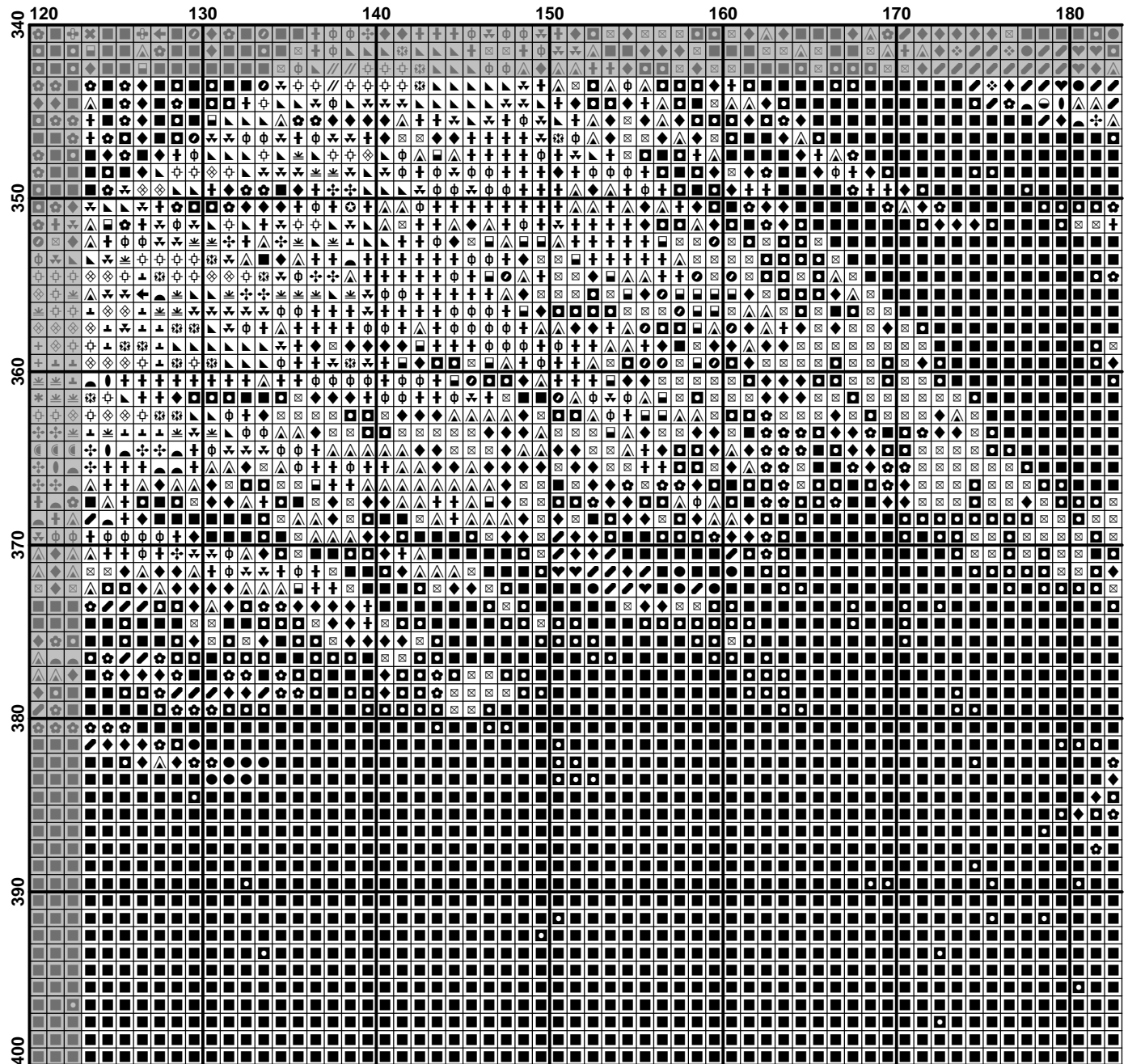


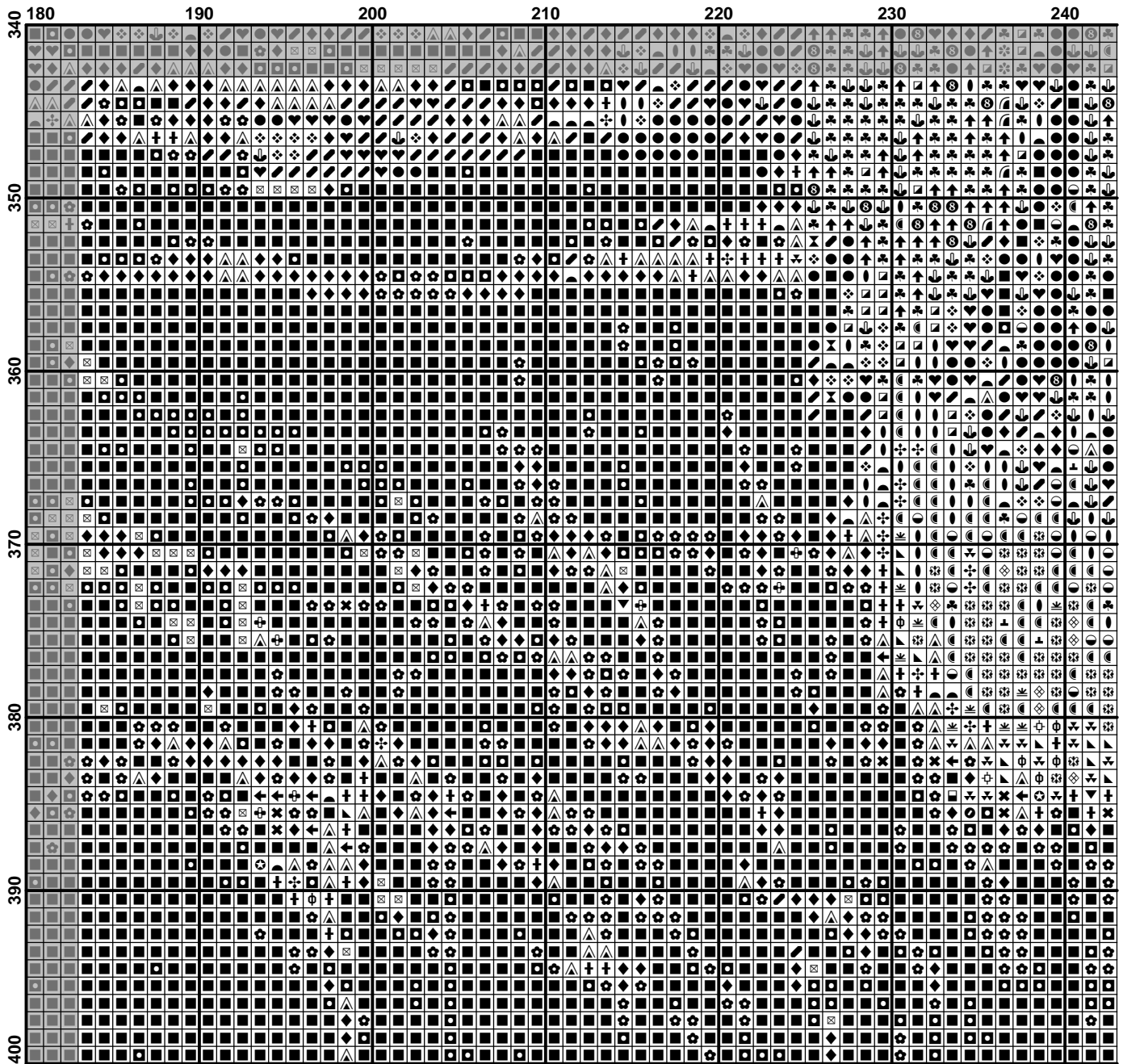


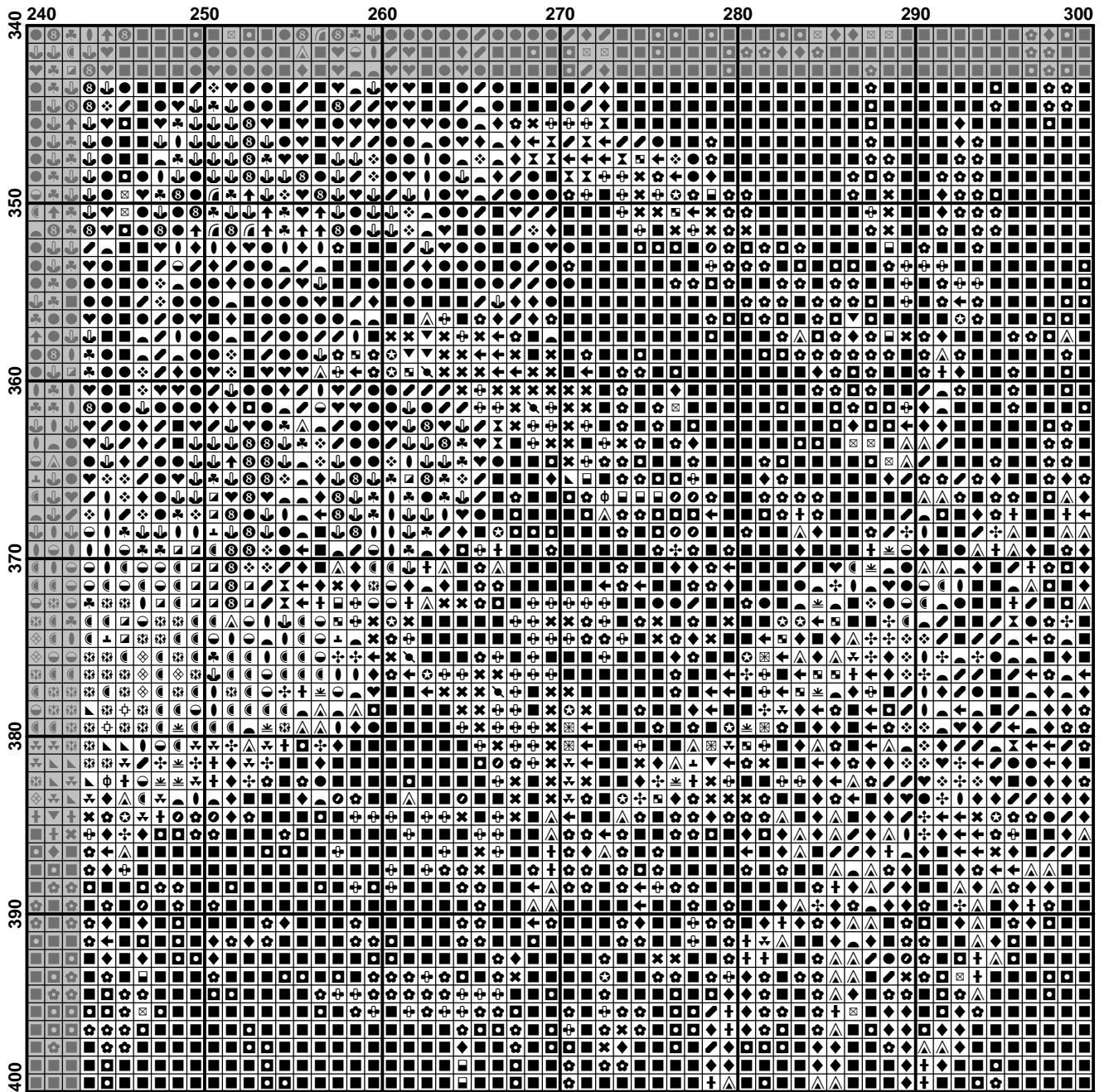




















Pattern Name: "В папоротнике"
Designed By: JONI JOHNSON GODSY
Company: ХИМЕРА
Fabric: Aida 18, White
 300w X 400h Stitches
Size(s): 18 Count, 42.33w X 56.44h cm
 16 Count, 47.62w X 63.50h cm
 14 Count, 54.43w X 72.57h cm
 25 Count, 30.48w X 40.64h cm

Floss Used for Full Stitches:

Symbol	Strands	Type	Number	Color
	//	2	DMC 159	Gray Blue-LT
	↘	2	DMC 169	Pewter-LT
	↑	2	DMC 300	Mahogany-VY DK
	■	2	DMC 310	Black
	†	2	DMC 317	Pewter Gray
	▲	2	DMC 318	Steel Gray-LT
	✕	2	DMC 319	Pistachio Green-VY DK
	⊗	2	DMC 320	Pistachio Green-MD
	⊙	2	DMC 367	Pistachio Green-DK
	↓	2	DMC 402	Mahogany-VY LT
	△	2	DMC 413	Pewter Gray-DK
	⊕	2	DMC 414	Steel Gray-DK
	⊖	2	DMC 415	Pearl Gray
	♠	2	DMC 435	Brown-VY LT
	◆	2	DMC 436	Tan
	*	2	DMC 471	Avocado Green-VY LT
	⊗	2	DMC 500	Blue Green-VY DK
	←	2	DMC 520	Fern Green-DK
	⋄	2	DMC 610	Drab Brown-DK
	⋄	2	DMC 646	Beaver Gray-DK
	≠	2	DMC 647	Beaver Gray-MD
	⊗	2	DMC 701	Christmas Green-LT
	⊗	2	DMC 758	Terra Cotta-VY LT
	⊗	2	DMC 823	Navy Blue-DK
	⊕	2	DMC 890	Pistachio Green-UL DK
	⊗	2	DMC 898	Coffee Brown-VY DK
	↶	2	DMC 919	Red Copper
	+	2	DMC 921	Copper
	⊕	2	DMC 922	Copper-LT
	⊖	2	DMC 930	Antique Blue-DK
	⊖	2	DMC 936	Avocado Green-VY DK
	♥	2	DMC 938	Coffee Brown-UL DK
	⊖	2	DMC 939	Navy Blue-VY DK
	†	2	DMC 3023	Brown Gray-LT
	☞	2	DMC 3031	Mocha Brown-VY DK
	⊖	2	DMC 3041	Antique Violet-MD
	⊗	2	DMC 3042	Antique Violet-LT
	⊗	2	DMC 3346	Hunter Green
	⋄	2	DMC 3348	Yellow Green-LT
	⊖	2	DMC 3363	Pine Green-MD
	*	2	DMC 3364	Pine Green
	●	2	DMC 3371	Black Brown
	⋄	2	DMC 3743	Antique Violet-VY LT
	⊖	2	DMC 3750	Antique Blue-VY DK
	★	2	DMC 3776	Mahogany-LT
	↙	2	DMC 3778	Terra Cotta-LT
	◐	2	DMC 3787	Brown Gray-DK
	◆	2	DMC 3799	Pewter Gray-VY DK
	▼	2	DMC 3815	Celadon Green-DK

Symbol	Strands	Type	Number	Color
 ❁	2	DMC	3830	Terra Cotta-MD
 ⬇	2	DMC	3857	Rosewood-DK
 ❁	2	DMC	3858	Rosewood-MD
 ●	2	DMC	3860	Cocoa
 ☾	2	DMC	3861	Cocoa-LT
 ☐	2	DMC	3863	Mocha Beige-MD
 1	2	DMC	3866	Mocha Brown-UL VY LT
 +	2	DMC	ecrut	Ecrut

Usage Summary

Strands Per Skein: 6

Skein Length: 795.0 cm

Type	Number	Full	Half	Quarter	Petite	Back(cm)	Str(cm)	Spec(cm)	French	Bead	Skein Est.
DMC	159	175	0	0	0	0.0	0.0	0.0	0	0	1.000
DMC	169	1786	0	0	0	0.0	0.0	0.0	0	0	1.000
DMC	300	1043	0	0	0	0.0	0.0	0.0	0	0	1.000
DMC	310	18671	0	0	0	0.0	0.0	0.0	0	0	7.000
DMC	317	2488	0	0	0	0.0	0.0	0.0	0	0	1.000
DMC	318	1283	0	0	0	0.0	0.0	0.0	0	0	1.000
DMC	319	1976	0	0	0	0.0	0.0	0.0	0	0	1.000
DMC	320	1104	0	0	0	0.0	0.0	0.0	0	0	1.000
DMC	367	1208	0	0	0	0.0	0.0	0.0	0	0	1.000
DMC	402	1213	0	0	0	0.0	0.0	0.0	0	0	1.000
DMC	413	4052	0	0	0	0.0	0.0	0.0	0	0	2.000
DMC	414	1220	0	0	0	0.0	0.0	0.0	0	0	1.000
DMC	415	1059	0	0	0	0.0	0.0	0.0	0	0	1.000
DMC	435	745	0	0	0	0.0	0.0	0.0	0	0	1.000
DMC	436	732	0	0	0	0.0	0.0	0.0	0	0	1.000
DMC	471	259	0	0	0	0.0	0.0	0.0	0	0	1.000
DMC	500	9483	0	0	0	0.0	0.0	0.0	0	0	4.000
DMC	520	2331	0	0	0	0.0	0.0	0.0	0	0	1.000
DMC	610	1347	0	0	0	0.0	0.0	0.0	0	0	1.000
DMC	646	1939	0	0	0	0.0	0.0	0.0	0	0	1.000
DMC	647	1404	0	0	0	0.0	0.0	0.0	0	0	1.000
DMC	701	363	0	0	0	0.0	0.0	0.0	0	0	1.000
DMC	758	1407	0	0	0	0.0	0.0	0.0	0	0	1.000
DMC	823	4436	0	0	0	0.0	0.0	0.0	0	0	2.000
DMC	890	1835	0	0	0	0.0	0.0	0.0	0	0	1.000
DMC	898	1418	0	0	0	0.0	0.0	0.0	0	0	1.000
DMC	919	1553	0	0	0	0.0	0.0	0.0	0	0	1.000
DMC	921	820	0	0	0	0.0	0.0	0.0	0	0	1.000
DMC	922	609	0	0	0	0.0	0.0	0.0	0	0	1.000
DMC	930	1015	0	0	0	0.0	0.0	0.0	0	0	1.000
DMC	936	648	0	0	0	0.0	0.0	0.0	0	0	1.000
DMC	938	1393	0	0	0	0.0	0.0	0.0	0	0	1.000
DMC	939	9844	0	0	0	0.0	0.0	0.0	0	0	4.000
DMC	3023	1569	0	0	0	0.0	0.0	0.0	0	0	1.000
DMC	3031	2456	0	0	0	0.0	0.0	0.0	0	0	1.000
DMC	3041	466	0	0	0	0.0	0.0	0.0	0	0	1.000
DMC	3042	708	0	0	0	0.0	0.0	0.0	0	0	1.000
DMC	3346	498	0	0	0	0.0	0.0	0.0	0	0	1.000
DMC	3348	394	0	0	0	0.0	0.0	0.0	0	0	1.000
DMC	3363	1173	0	0	0	0.0	0.0	0.0	0	0	1.000
DMC	3364	661	0	0	0	0.0	0.0	0.0	0	0	1.000
DMC	3371	2672	0	0	0	0.0	0.0	0.0	0	0	1.000
DMC	3743	861	0	0	0	0.0	0.0	0.0	0	0	1.000
DMC	3750	841	0	0	0	0.0	0.0	0.0	0	0	1.000
DMC	3776	975	0	0	0	0.0	0.0	0.0	0	0	1.000
DMC	3778	892	0	0	0	0.0	0.0	0.0	0	0	1.000
DMC	3787	2014	0	0	0	0.0	0.0	0.0	0	0	1.000
DMC	3799	8021	0	0	0	0.0	0.0	0.0	0	0	3.000
DMC	3815	554	0	0	0	0.0	0.0	0.0	0	0	1.000
DMC	3830	1333	0	0	0	0.0	0.0	0.0	0	0	1.000
DMC	3857	2433	0	0	0	0.0	0.0	0.0	0	0	1.000
DMC	3858	2527	0	0	0	0.0	0.0	0.0	0	0	1.000
DMC	3860	1908	0	0	0	0.0	0.0	0.0	0	0	1.000
DMC	3861	1195	0	0	0	0.0	0.0	0.0	0	0	1.000
DMC	3863	1122	0	0	0	0.0	0.0	0.0	0	0	1.000

Type	Number	Full	Half	Quarter	Petite	Back(cm)	Str(cm)	Spec(cm)	French	Bead	Skein	Est.
<input type="checkbox"/> DMC	3866	2004	0	0	0	0.0	0.0	0.0	0	0		1.000
<input type="checkbox"/> DMC	ecrut	1864	0	0	0	0.0	0.0	0.0	0	0		1.000