



Artesano

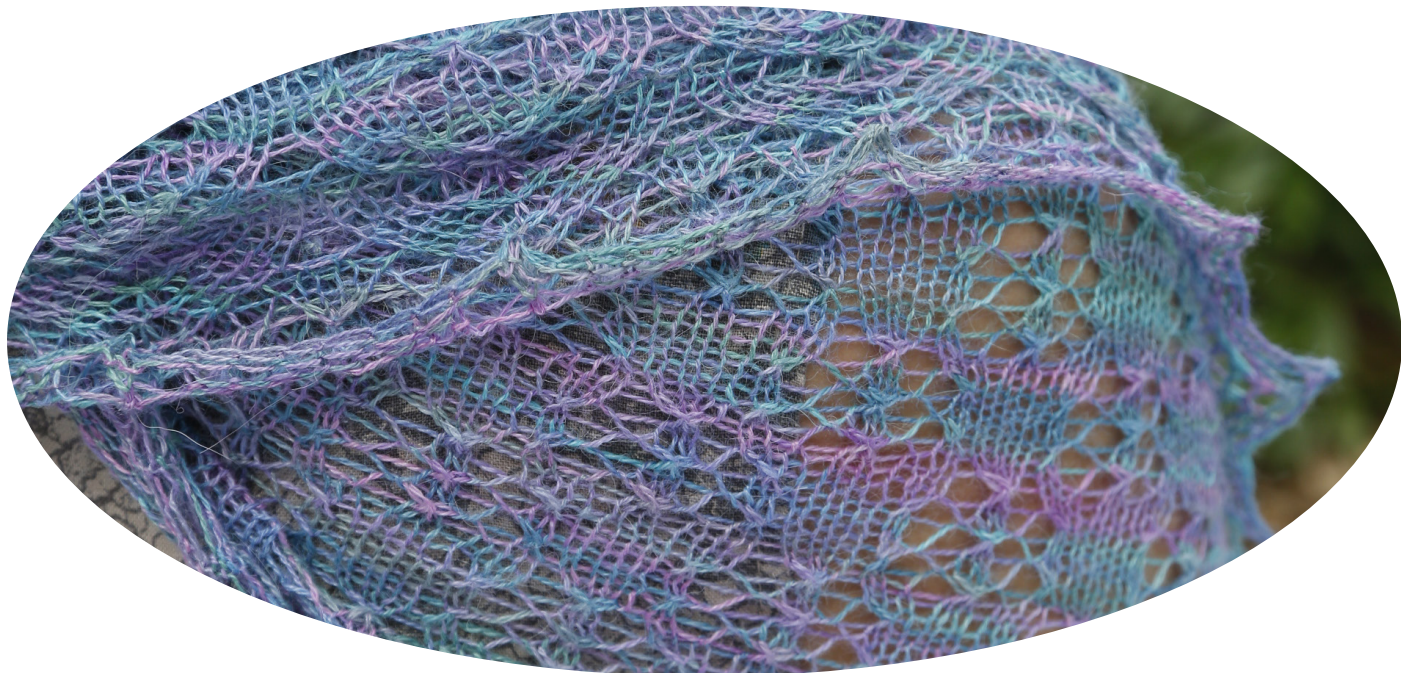
*Hand - Painted*

Alpaca Silk Lace  
Serafina by Anniken Allis



# Serafina Shawl

by Anniken Allis



## Tools and Materials

|                   |  |
|-------------------|--|
| Yarn used         | Artesano Hand-Painted Alpaca Silk Lace   |
| Colour & Shade No | Wavecrest EZ83   |
| Amount used       | 2 x 50g hanks<br>One repeat of the Insertion Chart measures 14cm wide & 8cm tall after blocking. Exact tension is not essential. |
| Tension           |  |
| Needles used      | 3.5 mm needles (80 cm circular needles are recommended)  |
| Other supplies    | 6 stitch markers   |
| Sizing            | Width: 180cm/71in<br>Length: 81cm/32in   |

## Written Instructions

### Russian Cast Off:

K2, slip both sts back to left ndl, k2tog tbl, \*k1, slip both sts back to left ndl, k2tog tbl. Rep from \* to end.

### Pattern:

Cast on 9 sts.

Work through Set Up Chart as follows:

Row 1(RS): k2, PM, work Set Up Chart, PM, k1, PM, work Set Up Chart, PM, k1, PM, work Set Up Chart, PM, k2.

Row 2 and all WS rows: k2, p to last 2 sts, k2 (slip all markers).

Row 3: k2, sm, work row 3 of Set Up chart, SM, k1, SM, work row 3 of Set Up Chart, SM, k1, SM, work row 3 of Set Up Chart, SM, k2.

Continue to work through the 23 rows of the Set Up Chart as set.

Row 24 (WS): k2, p to last 2 sts, k2. Remove the third and fourth marker as you reach them.

Work through Side Panel Chart and Insertion Chart as follows:

Row 1(RS): k2, SM, work Side Panel Chart, SM, work Insertion Chart, SM, work Side Panel Chart, SM, k2.

Row 2 and all WS rows: k2, p to last 2 sts, k2 (slipping all markers).

Continue through the charts as set ending each repeat with a WS row.

Note: Side Panel Chart (10 rows) will be repeated

twice for each repeat of the Insertion Chart (20 rows).

Work a total of 7 repeats of Insertion Chart (14 repeats of the Side Panel Chart).

Work edging as follows:

Row 1 (RS): k2, SM, work Side Panel Edging Chart, SM, work Insertion Edging Chart, SM, work Side Panel Edging Chart, SM, k2.

Row 2 (WS): k2, p to last 2 sts, k2 (slipping all markers).

Work edging charts once, ending with a WS row.

Cast off using Russian Cast Off or other stretchy cast off.

**Finishing:**

Weave in all loose ends. Soak shawl in lukewarm water. Squeeze out excess water. Lay shawl out on a flat clean area and stretch to size and shape. Pin in place. Leave to dry. Unpin when dry.

**Set Up Chart:**

Row 1: yo, k1, yo.

Row 2 & all WS rows: p to end.

Row 3: yo, k3, yo.

Row 5: yo, k1, yo, sl1, k2tog, pssso, yo, k1, yo.

Row 7: yo, k2tog, yo, k3, yo, ssk, yo.

Row 9: yo, k3, yo, sl1, k2tog, pssso, yo, k3, yo.

Row 11: yo, k2, k2tog, yo, k3, yo, ssk, k2, yo.

Row 13: yo, k5, yo, sl1, k2tog, pssso, yo, k5, yo.

Row 15: yo, k1, yo, sl1, k2tog, pssso, yo, k7, yo, sl1, k2tog, pssso, yo, k1, yo.

Row 17: yo, k2tog, yo, k3, yo, ssk, k3, k2tog, yo, k3, yo, ssk, yo.

Row 19: yo, k3, yo, sl1, k2tog, pssso, yo, k7, yo, sl1, k2tog, pssso, yo, k3, yo.

Row 21: yo, k2, k2tog, yo, k3, yo, ssk, k3, k2tog, yo, k3, yo, ssk, k2, yo.

Row 23: yo, k5, yo, sl1, k2tog, pssso, yo, k7, yo, sl1, k2tog, pssso, yo, k5, yo.

**Side Panel Chart:**

Row 1: yo, k1, yo, sl1, k2tog, pssso, yo, k4, (k3, yo, sl1, k2tog, pssso, yo, k4) rep to 7 sts before marker, k3, yo, sl1, k2tog, pssso, yo, k1, yo.

Row 2 & all WS rows: p to end.

Row 3: yo, k2tog, yo, k3, yo, ssk, k2, (k1, k2tog, yo, k3, yo, ssk, k2) rep to 8 sts before marker,

## Special Abbreviations

st(s) – stitch(es)

k – knit

p – purl

rep – repeat

RS – right side

WS – wrong side

tog – together

yo – yarn over/yarn forward

ndl(s) – needle(s)

sl – slip

pssso – pass slipped st over

tbl – through back loop

PM – place marker

SM – slip marker

ssk – slip 1 st knitwise, slip 1 more st knit wise, insert left ndl into front of both sts & k tog.

cast off = bind off

k1, k2tog, yo, k3, yo, ssk, yo.

Row 5: yo, k3, yo, sl1, k2tog, pssso, yo, k4, (k3, yo, sl1, k2tog, pssso, yo, k4) rep to 9 sts before marker, k3, yo, sl1, k2tog, pssso, yo, k3, yo.

Row 7: yo, k2, k2tog, yo, k3, yo, ssk, k2, (k1, k2tog, yo, k3, yo, ssk, k2) rep to 10 sts before marker, k1, k2tog, yo, k3, yo, ssk, k2, yo.

Row 9: yo, k5, yo, sl1, k2tog, pssso, yo, k4, (k3, yo, sl1, k2tog, pssso, yo, k4) rep to 11 sts before marker, k3, yo, sl1, k2tog, pssso, yo, k5, yo.

**Insertion Chart:**

Row 1: k8, yo, ssk, k7, k2tog, yo, k8.

Row 2 & all WS rows: p to end.

Row 3: k6, yo, ssk, k1, yo, ssk, k5, k2tog, yo, k1, k2tog, yo, k6.

Row 5: k7, yo, ssk, k1, yo, ssk, k3, k2tog, yo, k1, k2tog, yo, k7.

Row 7: k3, yo, sl1, k2tog, pssso, yo, k2, (yo, ssk, k1) twice, k2tog, yo, k1, k2tog, yo, k2, yo, sl1, k2tog, pssso, yo, k3.

Row 9: k1, k2tog, yo, k3, (yo, ssk, k1) twice, yo, sl1, k2tog, pssso, (yo, k1, k2tog) twice, yo, k3, yo, ssk, k1.

Row 11: k3, yo, sl1, k2tog, pssso, (yo, k1, k2tog) twice, yo, k3, (yo, ssk, k1) twice, yo, sl1, k2tog, pssso, yo, k3.

Row 13: k6, k2tog, yo, k1, k2tog, yo, k5, yo, ssk, k1, yo, ssk, k6.

Row 15: k5, k2tog, yo, k1, k2tog, yo, k7, yo, ssk, k1, yo, ssk, k5.

Row 17: k7, k2tog, yo, k9, yo, ssk, k7.

Row 19: k27.

### Side Panel Edging Chart:

Row 1: yo, k2tog, k1, yo, k7, k2tog, k1, yo, (k7, k2tog, k1, yo) rep to 12 sts before marker, k7, k2tog, k1, yo, k2, yo.

Row 2 & all WS rows: p to end.

Row 3: yo, k2tog, (k1, yo) twice, k1, ssk, k3, k2tog, k1, yo, k1, (yo, k1, ssk, k3, k2tog, k1, yo, k1) rep to 13 sts before marker, yo, k1, ssk, k3, k2tog, (k1, yo) twice, k1, ssk, yo.

Row 5: yo, k2tog, k1, yo, k3, yo, k1, ssk, k1, k2tog, k1, yo, k2, (k1, yo, k1, ssk, k1, k2tog, k1, yo, k2) rep to 14 sts before marker, k1, yo, k1, ssk, k1, k2tog, k1, yo, k3, yo, k1, ssk, yo.

Row 7: yo, k2tog, k1, yo, k5, yo, k1, sl1, k2tog, pssso, k1, yo, k3, (k2, yo, k1, sl1, k2tog, pssso, k1, yo, k3) rep to 15 sts before marker, k2, yo, k1, sl1, k2tog, pssso, k1, yo, k5, yo, k1, ssk, yo.

Row 9: yo, k2tog, k1, yo, k2tog, k2, yo, k3, yo, sl1, k2tog, pssso, yo, k2tog, k2, yo, (k3, yo, sl1, k2tog, pssso, yo, k2tog, k2, yo) rep to 16 sts before marker, k3, yo, sl1, k2tog, pssso, yo, k2tog, k2, yo, k3, yo, k1, ssk, yo.

Row 11: yo, k2tog, k1, yo, k2tog, k2, yo, k1, yo, k2, ssk, k1, k2tog, k2, yo, k1, (yo, k2, ssk, k1, k2tog, k2, yo, k1) rep to 17 sts before marker, yo, k2, ssk, k1, k2tog, k2, yo, k1, yo, k2, ssk, yo, k1, ssk, yo.

Row 13: yo, k2tog, k1, yo, k2tog, k2, yo, k3, yo, k2, sl1, k2tog, pssso, k2, yo, k2, (k1, yo, k2, sl1, k2tog, pssso, k2, yo, k2) rep to 18 sts before marker, k1, yo, k2, sl1, k2tog, pssso, k2, yo, k3, yo, k2, ssk, yo, k1, ssk, yo.

Row 15: yo, k2tog, k1, yo, k2tog, k2, yo, k5, yo, k1, sl1, k2tog, pssso, k1, yo, k3, (k2, yo, k1, sl1, k2tog, pssso, k1, yo, k3) rep to 19 sts before marker, k3, yo, k1, sl1, k2tog, pssso, k1, yo, k5, yo, k2, ssk, yo, k1, ssk, yo.

Row 17: yo, k2tog, k1, yo, k2tog, k2, (yo, k2, yo, sl1, k2tog, pssso) x 3 times, ((yo, k2, yo, sl1, k2tog, pssso) twice) rep to 19 sts before marker, (yo, k2, yo, sl1, k2tog, pssso) twice, (yo, k2) twice, ssk, yo, k1, ssk, yo.

Row 19: yo, k2tog, k1, yo, k2tog, k3, yo, k2tog, yo, k3, yo, ssk, yo, sl1, k2tog, pssso, yo, k2tog, yo, k2, (k1, yo, ssk, yo, sl1, k2tog, pssso, yo, k2tog, yo, k2) rep to 21 sts before marker, k1, yo, ssk, yo, sl1, k2tog, pssso, yo, k2tog, yo, k3, yo, ssk, yo, k3, ssk, yo, k1, ssk, yo.

Row 21: yo, k2tog, k1, yo, k2tog, k4, (yo, k2, yo, sl1, k2tog, pssso) x 3 times, ((yo, k2, yo, sl1, k2tog, pssso) twice) rep to 21 sts before marker,

(yo, k2, yo, sl1, k2tog, pssso) twice, yo, k2, yo, k4, ssk, yo, k1, ssk, yo.

Row 23: yo, k2tog, k1, yo, k2tog, k5, yo, k7, yo, sl1, k2tog, pssso, yo, k4, (k3, yo, sl1, k2tog, pssso, yo, k4) rep to 23 stitches before marker, k3, yo, sl1, k2tog, pssso, yo, k7, yo, k5, ssk, yo, k1, ssk, yo.

### Insertion Edging Chart:

Row 1: k11, k2tog, k1, yo, k13.

Row 2 & all WS rows: p to end.

Row 3: k2, yo, sl1, k2tog, pssso, yo, k5, k2tog, (k1, yo) twice, k1, ssk, k5, yo, sl1, k2tog, pssso, yo, k2.

Row 5: k2tog, yo, k3, yo, ssk, k2, k2tog, k1, yo, k3, yo, k1, ssk, k2, k2tog, yo, k3, yo, ssk.

Row 7: k2, yo, sl1, k2tog, pssso, yo, k3, k2tog, k1, yo, k5, yo, k1, ssk, k3, yo, sl1, k2tog, pssso, yo, k2.

Row 9: k7, k2tog, k1, yo, k2tog, k2, yo, k3, yo, k1, ssk, k7.

Row 11: k6, k2tog, k1, yo, k2tog, k2, yo, k1, yo, k2, ssk, yo, k1, ssk, k6.

Row 13: k5, k2tog, k1, yo, k2tog, k2, yo, k3, yo, k2, ssk, yo, k1, ssk, k5.

Row 15: k4, k2tog, k1, yo, k2tog, k2, yo, k5, yo, k2, ssk, yo, k1, ssk, k4.


Row 17: k3, k2tog, k1, yo, k2tog, (k2, yo) twice, sl1, k2tog, pssso, (yo, k2) x 2, ssk, yo, k1, ssk, k3.

Row 19: k2, k2tog, k1, yo, k1, k2tog, k2, yo, k2tog, yo, k3, yo, ssk, yo, k2, ssk, k1, yo, k1, ssk, k2.

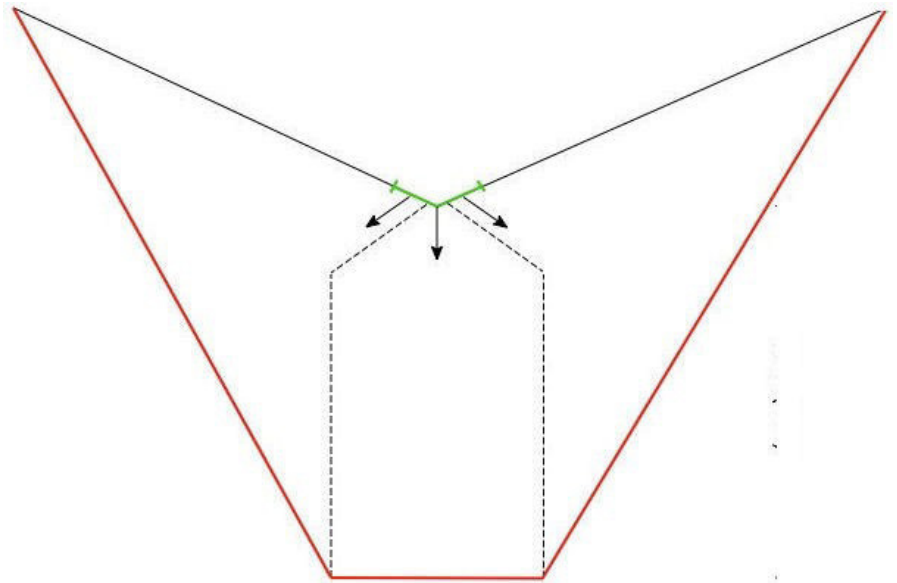
Row 21: k1, k2tog, k1, yo, k2, k2tog, (k2, yo) x 2, sl1, k2tog, pssso, (yo, k2) twice, ssk, k2, yo, k1, ssk, k1.

Row 23: k2tog, k1, yo, k3, k2tog, k2, yo, k7, yo, k2, ssk, k3, yo, k1, ssk.

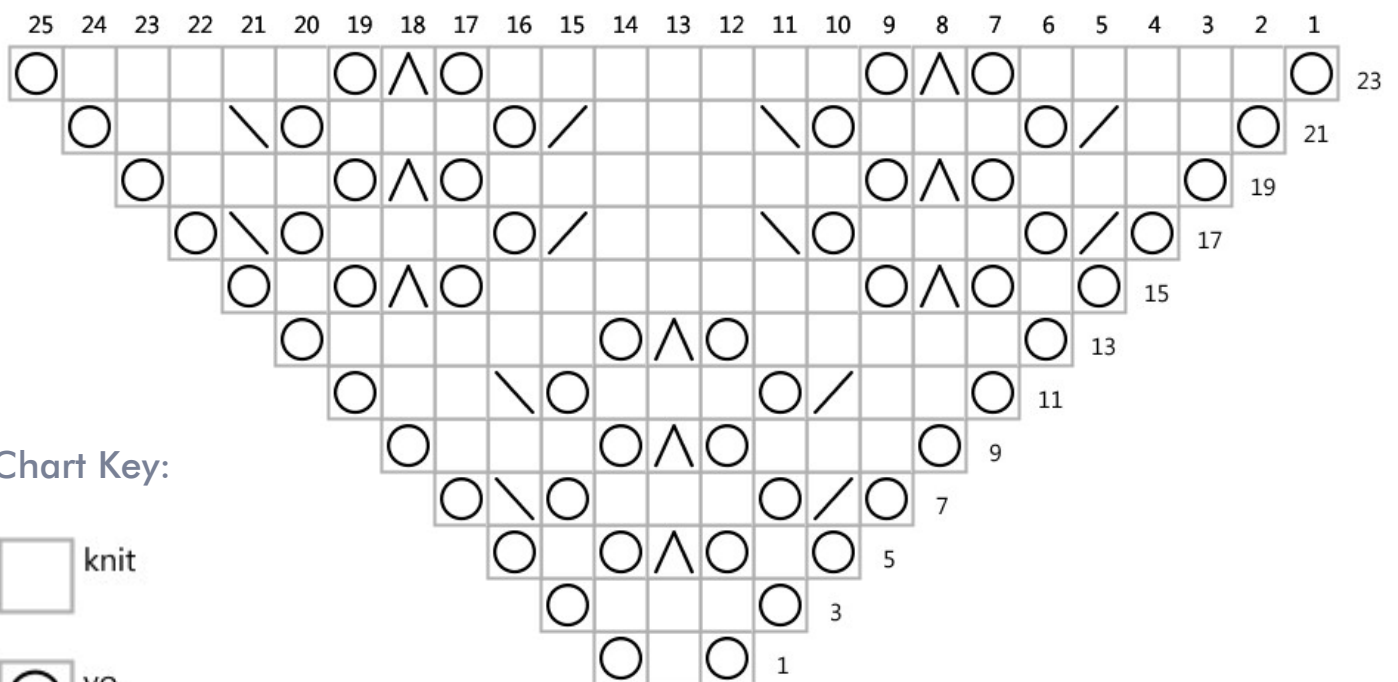
### Schematic Key:

-  = direction of knitting
-  = cast on
-  = cast off
-  = increase/decrease






### Schematic:



### Set Up Chart:

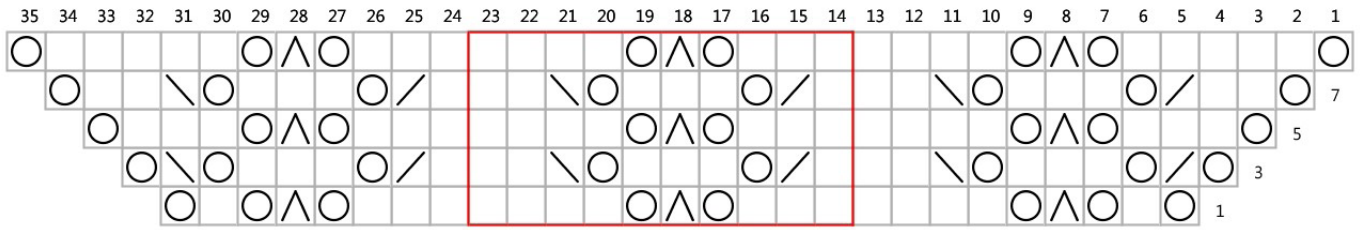


### Chart Key:

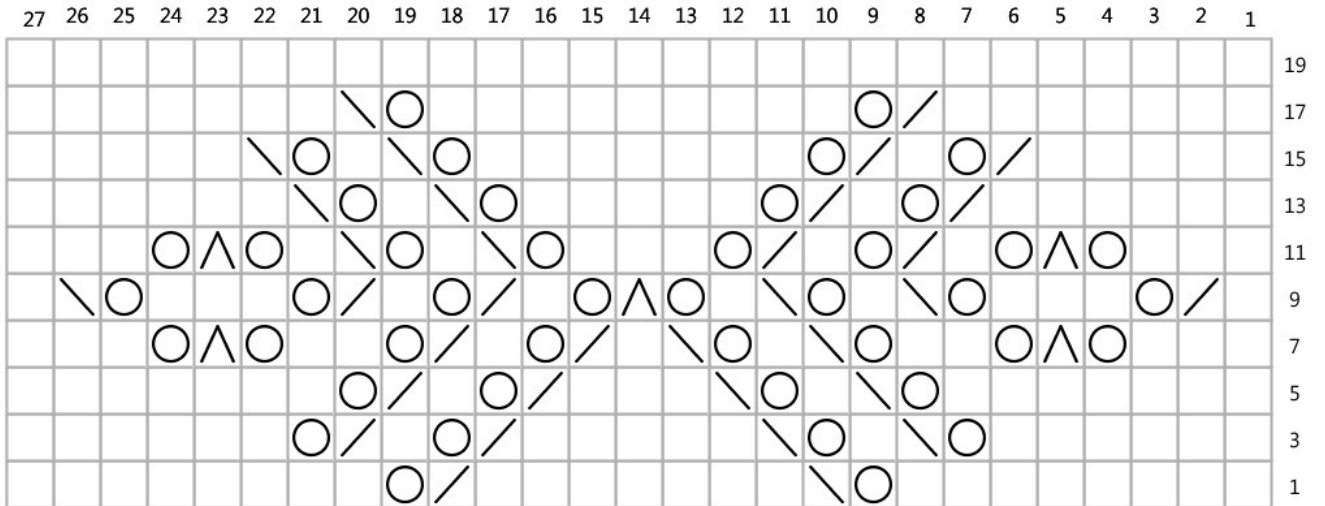
-  knit
-  yo
-  k2tog
-  ssk
-  sl1, k2tog, pss0
-  pattern repeat



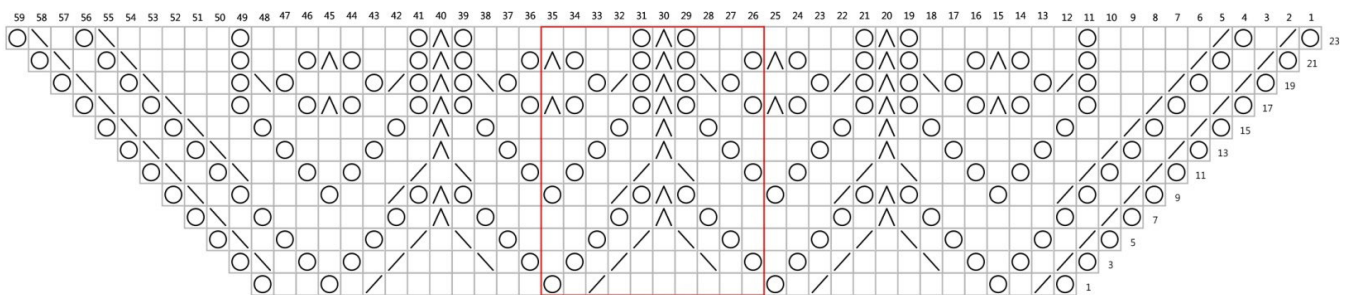
### Side Panel Chart:



### Insertion Chart:



### Side Panel Edging Chart:



### Insertion Edging Chart:

|    |    |    |    |    |    |    |    |    |    |    |    |    |    |    |    |    |    |   |   |   |   |   |   |   |    |   |  |
|----|----|----|----|----|----|----|----|----|----|----|----|----|----|----|----|----|----|---|---|---|---|---|---|---|----|---|--|
| 27 | 26 | 25 | 24 | 23 | 22 | 21 | 20 | 19 | 18 | 17 | 16 | 15 | 14 | 13 | 12 | 11 | 10 | 9 | 8 | 7 | 6 | 5 | 4 | 3 | 2  | 1 |  |
| \  |    | ○  |    |    | \  |    |    |    | ○  |    |    |    |    |    |    |    | ○  |   | / |   |   |   | ○ | / | 23 |   |  |
|    | \  |    | ○  |    | \  |    |    |    | ○  |    |    | ○  | △  | ○  |    |    | ○  |   | / |   |   |   | ○ | / | 21 |   |  |
|    |    | \  |    | ○  | \  |    |    |    | ○  | \  | ○  |    |    |    | ○  | /  | ○  |   | / |   |   | ○ | / |   | 19 |   |  |
|    |    |    | \  |    | ○  | \  |    |    | ○  |    |    | ○  | △  | ○  |    |    | ○  |   | / |   | ○ | / |   |   | 17 |   |  |
|    |    |    |    | \  |    | ○  | \  |    |    | ○  |    |    |    |    | ○  |    |    | / |   | ○ | / |   |   |   | 15 |   |  |
|    |    |    |    |    | \  |    | ○  | \  |    |    | ○  |    |    |    | ○  |    |    | / |   | ○ | / |   |   |   | 13 |   |  |
|    |    |    |    |    |    | \  |    | ○  | \  |    |    | ○  |    |    |    | ○  |    | / |   | ○ | / |   |   |   | 11 |   |  |
|    |    |    |    |    |    |    | \  |    | ○  |    |    | ○  |    |    |    | ○  |    | / |   | ○ | / |   |   |   | 9  |   |  |
|    |    |    | ○  | △  | ○  |    |    | \  |    | ○  |    |    |    |    |    | ○  | /  |   |   |   |   | ○ | △ | ○ | 7  |   |  |
| \  | ○  |    |    |    | ○  | /  |    |    | \  |    | ○  |    |    |    | ○  | /  |    |   | \ | ○ |   |   |   | ○ | /  | 5 |  |
|    |    | ○  | △  | ○  |    |    |    | \  |    | ○  |    | ○  |    |    | /  |    |    |   |   | ○ | △ | ○ |   |   | 3  |   |  |
|    |    |    |    |    |    |    |    |    |    |    |    | ○  |    | /  |    |    |    |   |   |   |   |   |   |   | 1  |   |  |







**Artesano**

**Artesano Ltd**  
Unit G, Lambs Farm Business Park  
Basingstoke Rd, Swallowfield  
Reading, Berkshire  
RG7 1PQ

+44 (0)118 950 3350  
[www.artesanoyarns.co.uk](http://www.artesanoyarns.co.uk)  
[www.artesanogarn.de](http://www.artesanogarn.de)  
[info@artesanoyarns.co.uk](mailto:info@artesanoyarns.co.uk)

Copyright © Artesano 2015