



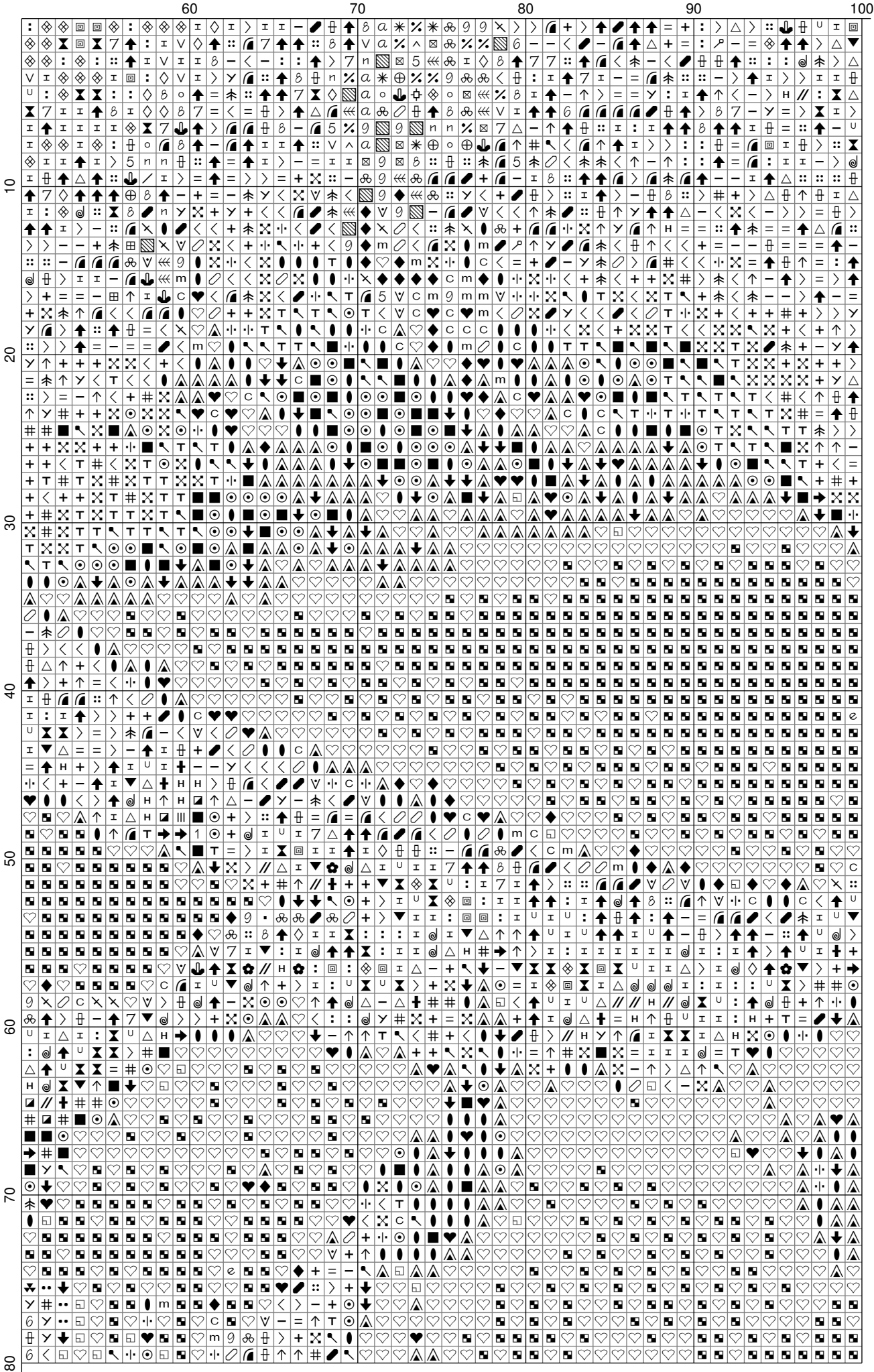
|     |                                  |    |                                    |
|-----|----------------------------------|----|------------------------------------|
| ◇◇  | Ecru (27)                        | C  | 936 V DK Avocado Green (54)        |
| ◆◆  | B5200 Snow White (153)           | □  | 938 Ultra DK Coffee Brown (744)    |
| 井   | 167 V DK Yellow Beige (167)      | e  | 939 V DK Navy Blue (72)            |
| \$  | 168 V LT Pewter (147)            | ▼  | 945 Tawny (111)                    |
| ٪   | 169 LT Pewter (167)              | ▲  | 975 DK Golden Brown (226)          |
| ..  | 300 V DK Mahogany (343)          | □  | 976 MD Golden Brown (32)           |
| ■   | 310 Black (4813)                 | ◇  | 3011 DK Khaki Green (85)           |
| 米   | 318 LT Steel Gray (161)          | ●  | 3012 MD Khaki Green (93)           |
| +   | 370 MD Mustard (234)             | m  | 3021 V DK Brown Gray (277)         |
| ↑   | 371 Mustard (116)                | n  | 3023 LT Brown Gray (122)           |
| —   | 372 LT Mustard (217)             | o  | 3024 V LT Brown Gray (653)         |
| ▪   | 414 DK Steel Gray (145)          | △  | 3031 V DK Mocha Brown (501)        |
| /   | 415 Pearl Gray (116)             | ◐  | 3032 MD Mocha Brown (279)          |
| 1   | 433 MD Brown (176)               | ⌂  | 3033 V LT Mocha Brown (458)        |
| 2   | 435 V LT Brown (82)              | S  | 3041 MD Antique Violet (58)        |
| 3   | 436 Tan (57)                     | △  | 3046 MD Yellow Beige (113)         |
| 4   | 437 LT Tan (62)                  | u  | 3047 LT Yellow Beige (81)          |
| 5   | 451 DK Shell Gray (268)          | V  | 3072 V LT Beaver Gray (482)        |
| 6   | 452 MD Shell Gray (309)          | ♡  | 3371 Black Brown (4438)            |
| 7   | 453 LT Shell Gray (112)          | X  | 3726 DK Antique Mauve (23)         |
| 8   | 524 V LT Fern Green (196)        | ⊕  | 3743 V LT Antique Violet (138)     |
| 9   | 535 V LT Ash Gray (96)           | Z  | 3753 Ultra V LT Antique Blue (215) |
| :   | 543 Ultra V LT Beige Brown (178) | ☾  | 3756 Ultra V LT Baby Blue (96)     |
| · · | 610 DK Drab Brown (743)          | ●  | 3781 DK Mocha Brown (976)          |
| <   | 611 Drab Brown (804)             | :: | 3782 LT Mocha Brown (259)          |
| =   | 612 LT Drab Brown (198)          | ✂  | 3787 DK Brown Gray (192)           |
| >   | 613 V LT Drab Brown (295)        | V  | 3790 Ultra DK Beige Gray (379)     |
| ✕   | 632 Ultra V DK Desert Sand (69)  | ✿  | 3855 LT Autumn Gold (30)           |
| 8   | 640 V DK Beige Gray (175)        | ▲  | 3859 LT Rosewood (34)              |
| ↓   | 642 DK Beige Gray (120)          | 田  | 3860 Cocoa (309)                   |
| ◇   | 644 MD Beige Gray (181)          | 尸  | 3861 LT Cocoa (172)                |
| ▨   | 645 V DK Beaver Gray (222)       | 人  | 3862 DK Mocha Beige (285)          |
| ≡   | 646 DK Beaver Gray (310)         | 木  | 3863 MD Mocha Beige (595)          |
| ☒   | 647 MD Beaver Gray (378)         | 卅  | 3864 LT Mocha Beige (246)          |
| ⊕   | 648 LT Beaver Gray (216)         | 回  | 3866 Ultra V LT Mocha Brown (225)  |
| H   | 680 DK Old Gold (168)            |    |                                    |
| †   | 729 MD Old Gold (97)             |    |                                    |
| @   | 738 V LT Tan (134)               |    |                                    |
| ✕   | 739 Ultra V LT Tan (133)         |    |                                    |
| L   | 779 DK Cocoa (192)               |    |                                    |
| III | 780 Ultra V DK Topaz (263)       |    |                                    |
| 卅   | 781 V DK Topaz (131)             |    |                                    |
| ●   | 782 DK Topaz (39)                |    |                                    |
| ✕   | 783 MD Topaz (87)                |    |                                    |
| ◎   | 801 DK Coffee Brown (366)        |    |                                    |
| ◇   | 822 LT Beige Gray (128)          |    |                                    |
| ■   | 829 V DK Golden Olive (137)      |    |                                    |
| T   | 830 DK Golden Olive (102)        |    |                                    |
| ▣   | 832 Golden Olive (58)            |    |                                    |
| //  | 833 LT Golden Olive (42)         |    |                                    |
| ♥   | 838 V DK Beige Brown (367)       |    |                                    |
| ✕   | 840 MD Beige Brown (276)         |    |                                    |
| ✓   | 841 LT Beige Brown (281)         |    |                                    |
| ↑   | 842 V LT Beige Brown (450)       |    |                                    |
| ➔   | 869 V DK Hazelnut Brown (120)    |    |                                    |
| ↓   | 898 V DK Coffee Brown (635)      |    |                                    |
| ←   | 902 V DK Garnet (43)             |    |                                    |
| ^   | 928 V LT Gray Green (189)        |    |                                    |
| α   | 931 MD Antique Blue (40)         |    |                                    |
| ◆   | 934 Black Avocado Green (296)    |    |                                    |

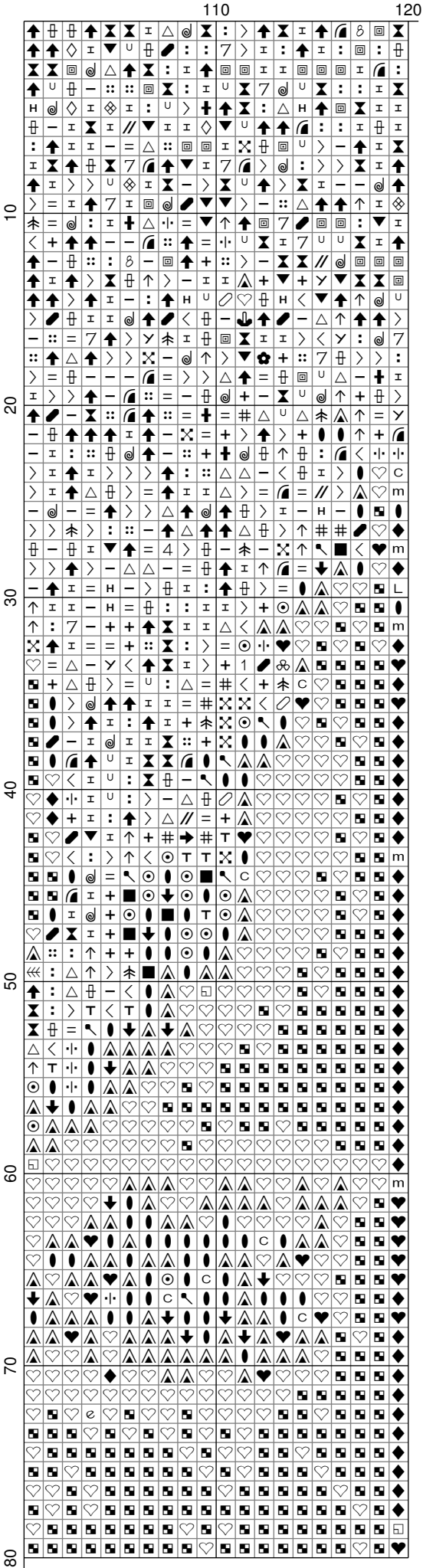
\* Карта цветов приведена для нитей марки «DMC»

\*\* В скобках после названия цвета указано количество крестов, выполняемых данным цветом

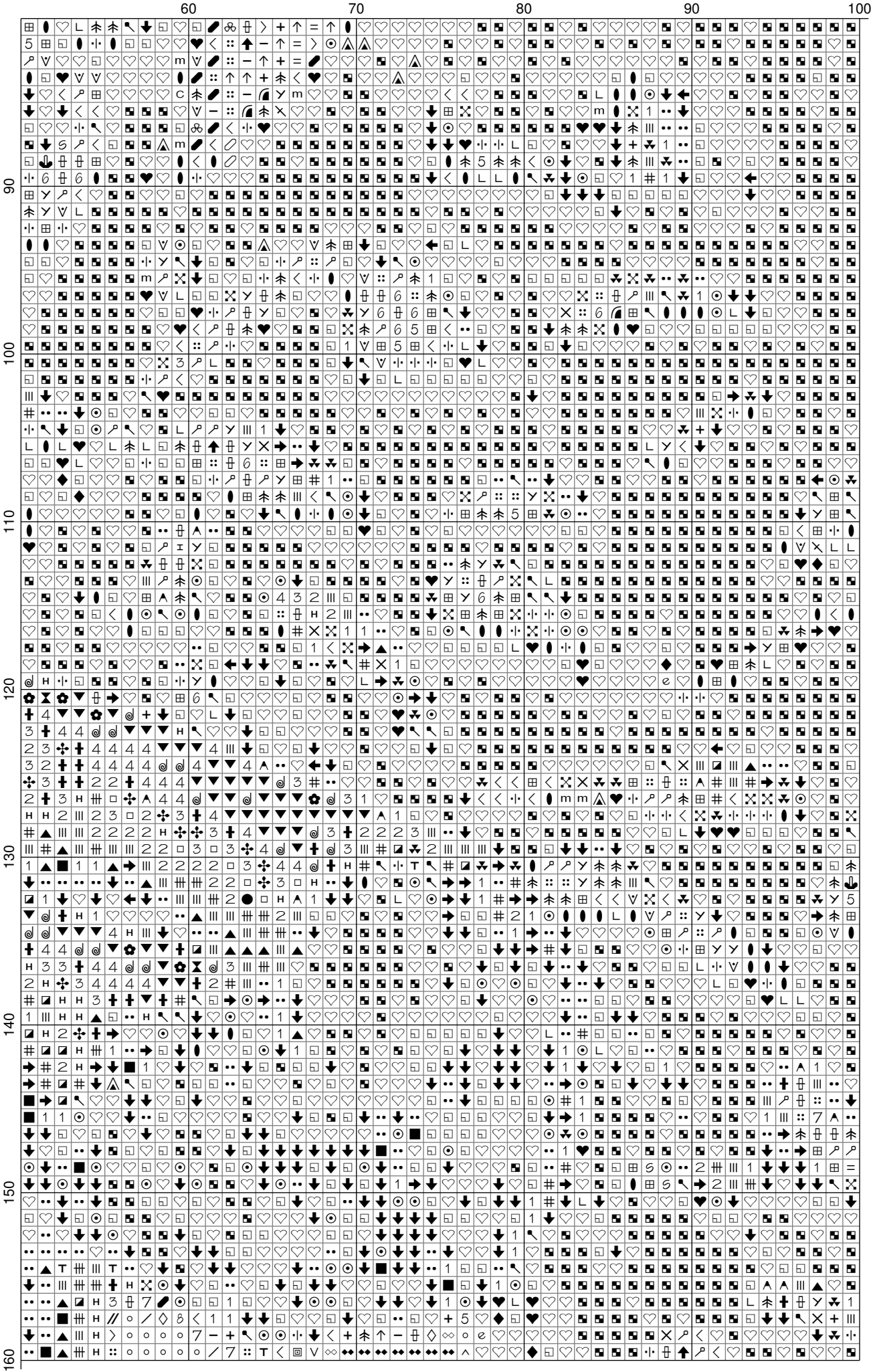
[illegible]

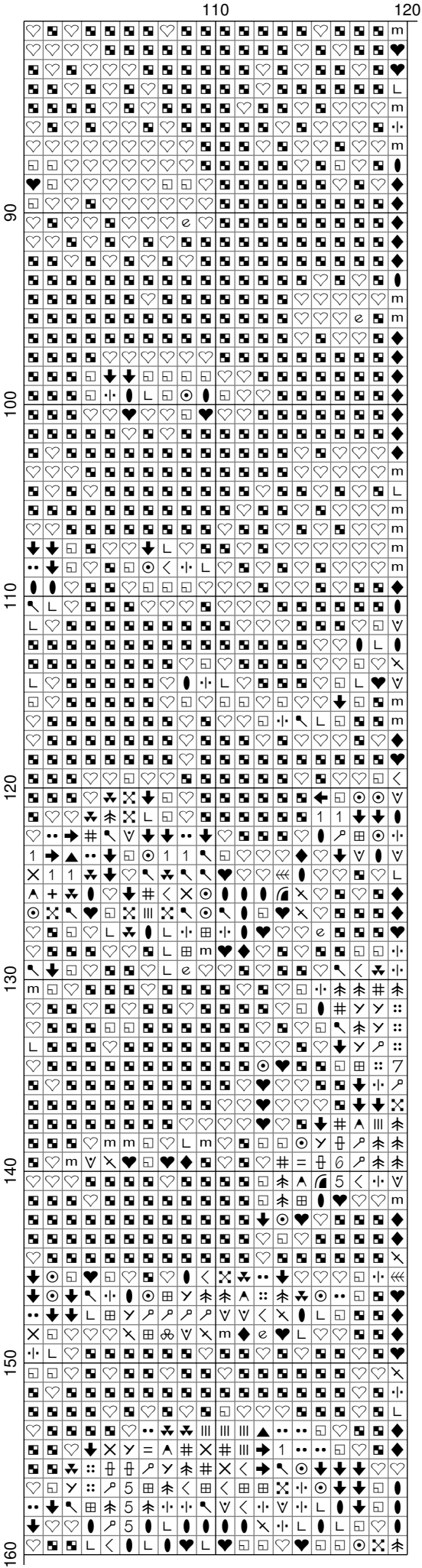






[illegible]

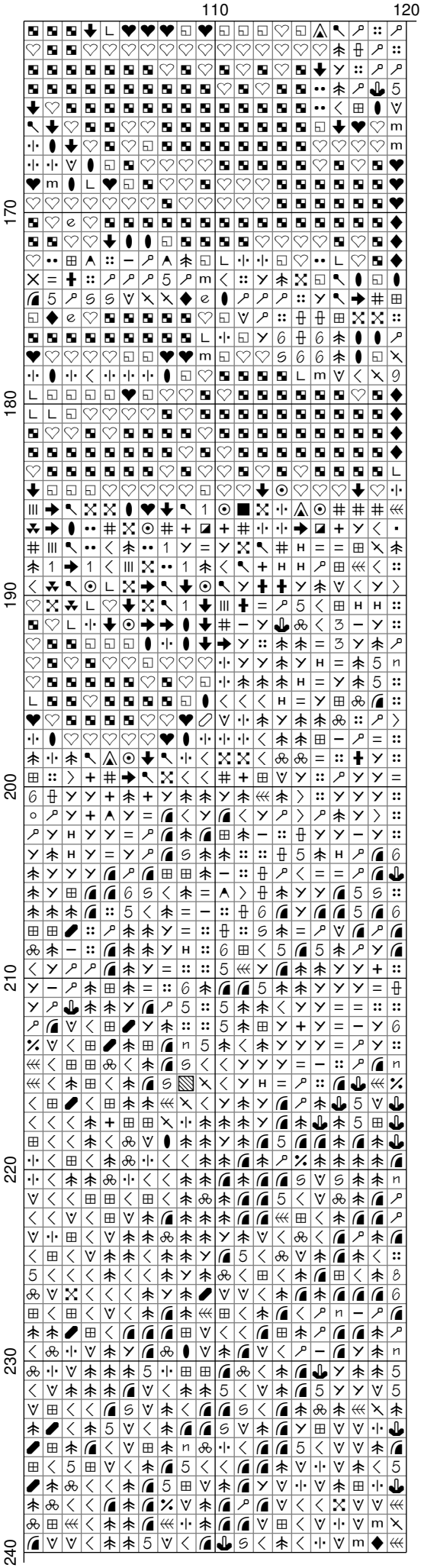






[illegible]

[illegible]



249

[illegible]





120

[illegible]