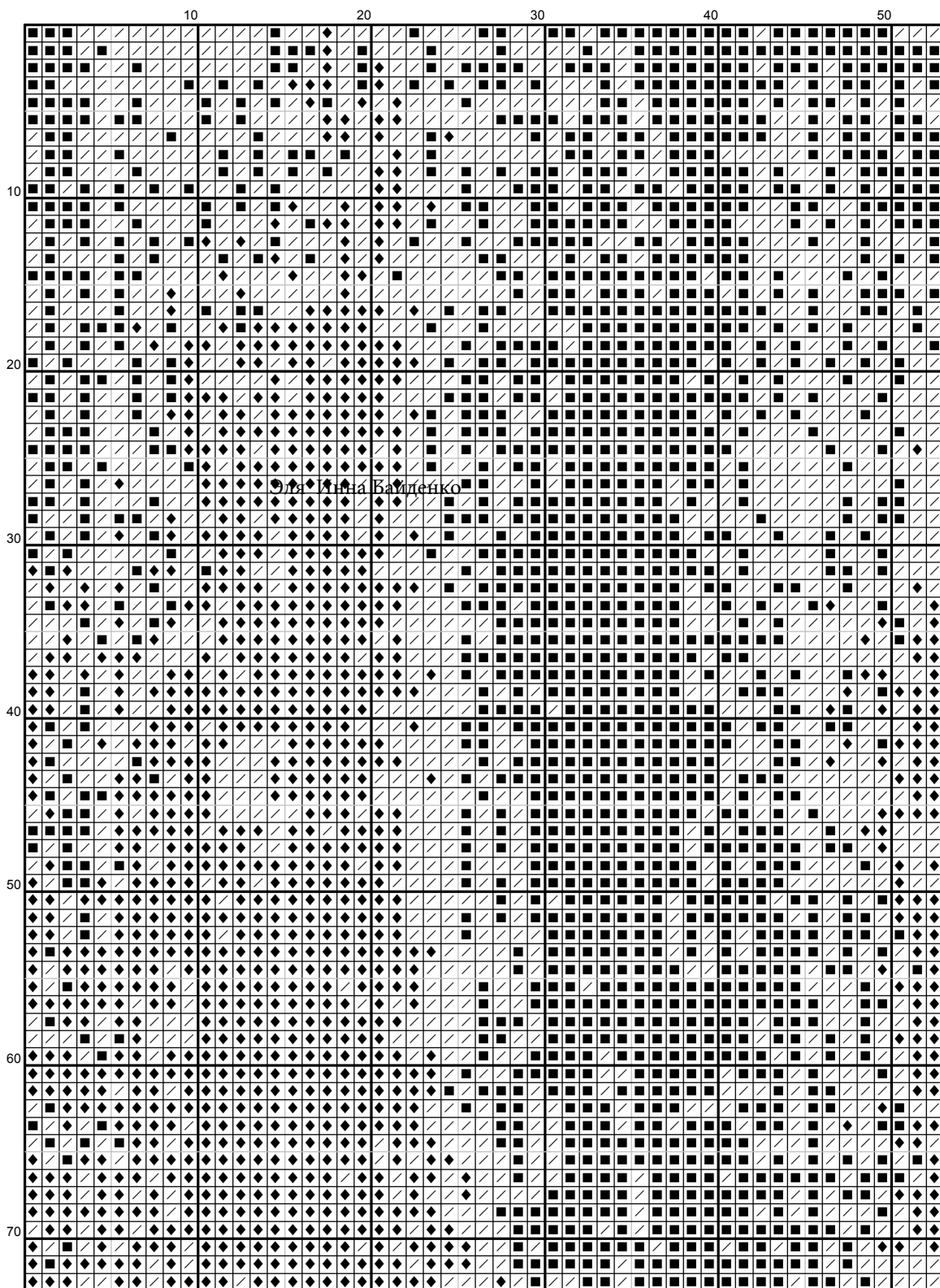
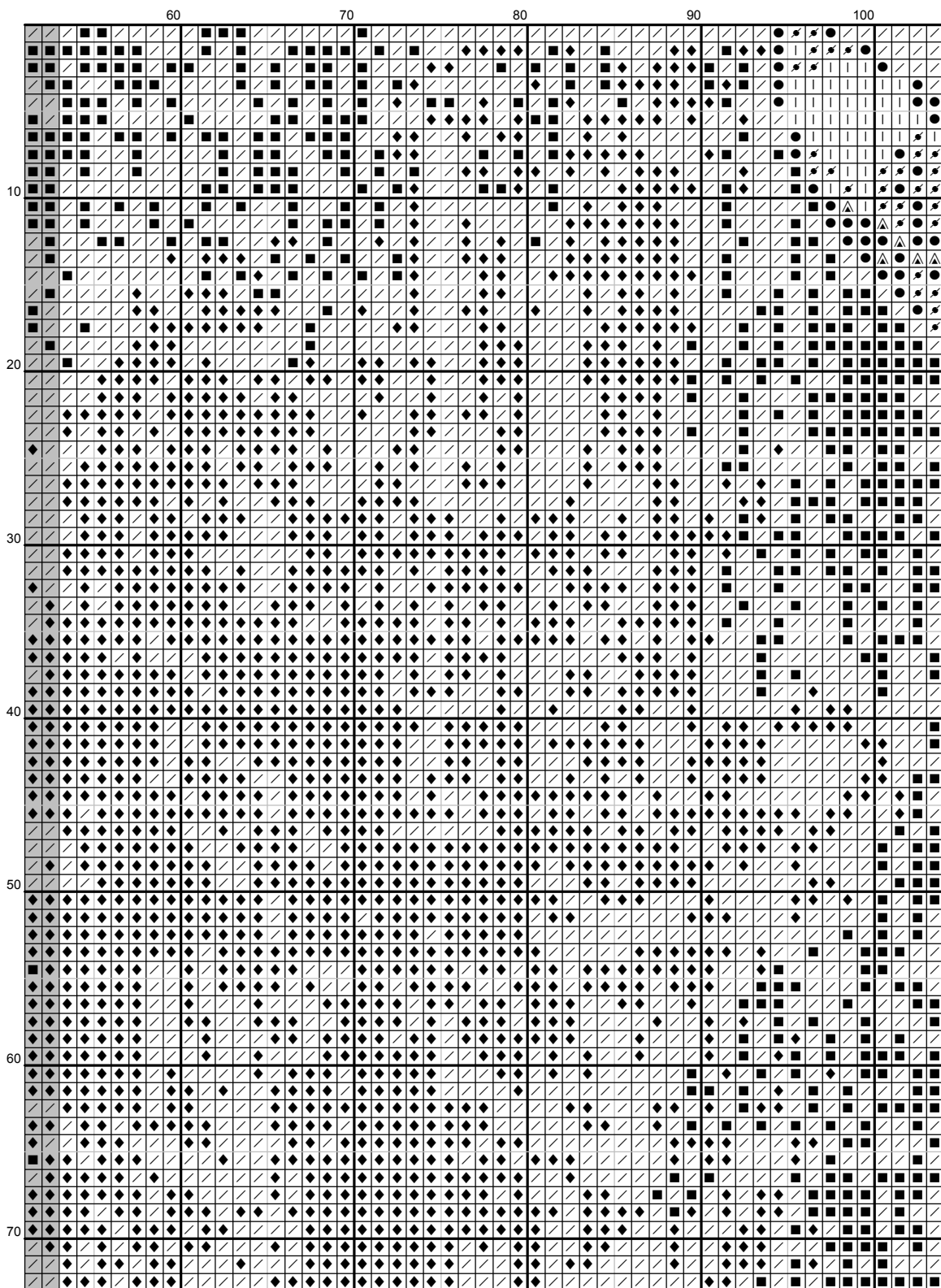


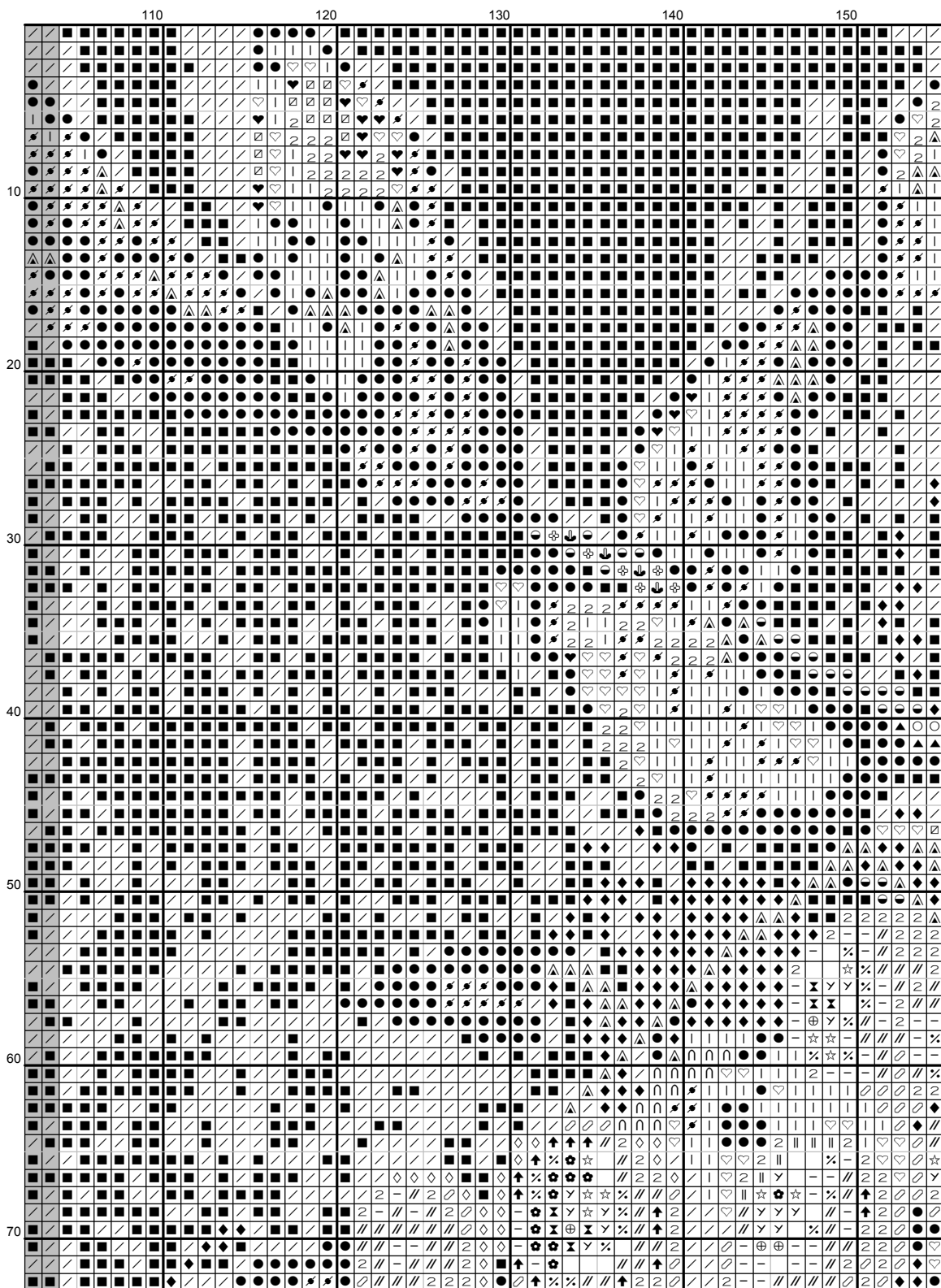
Осенний натюрморт

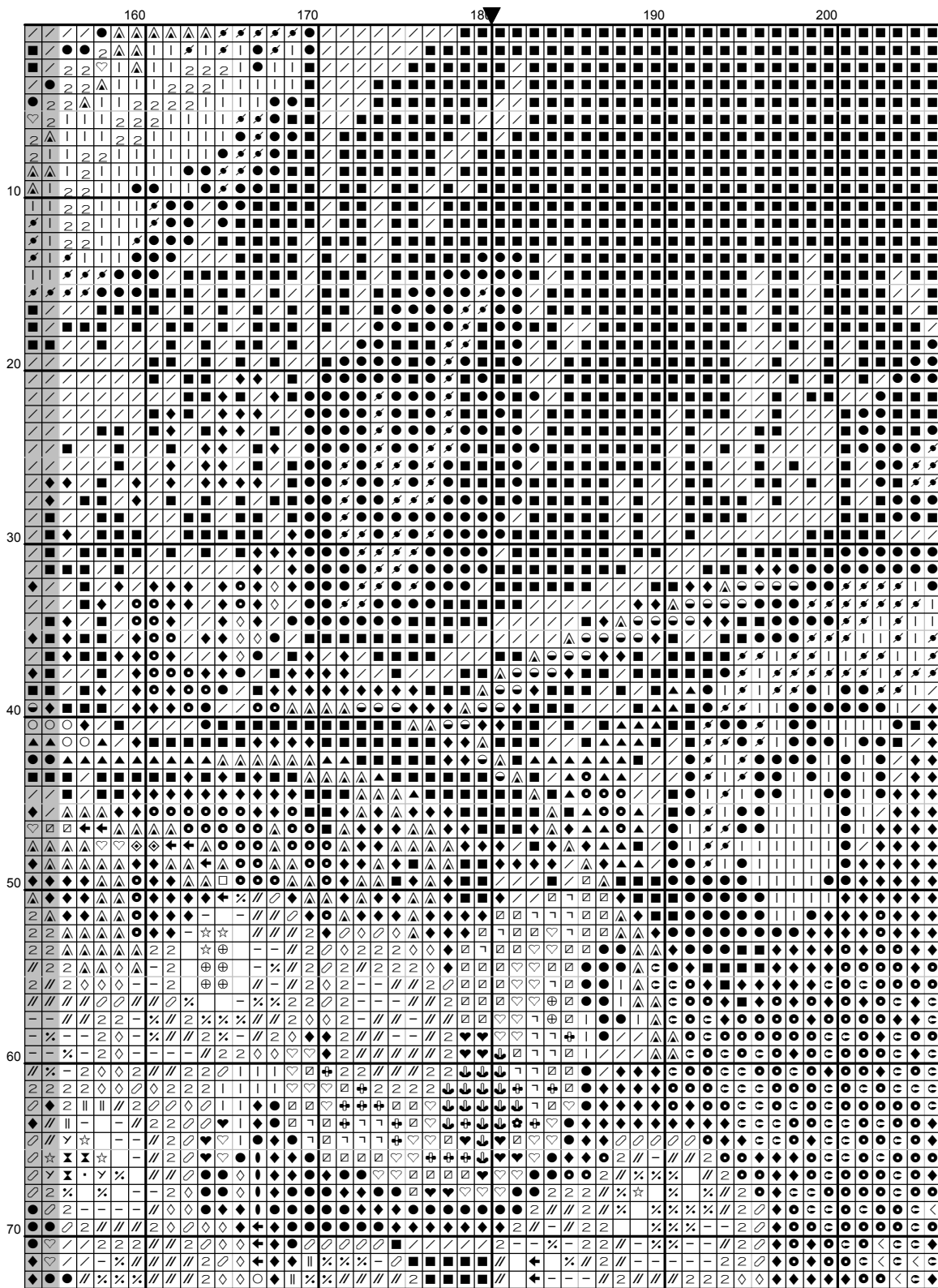


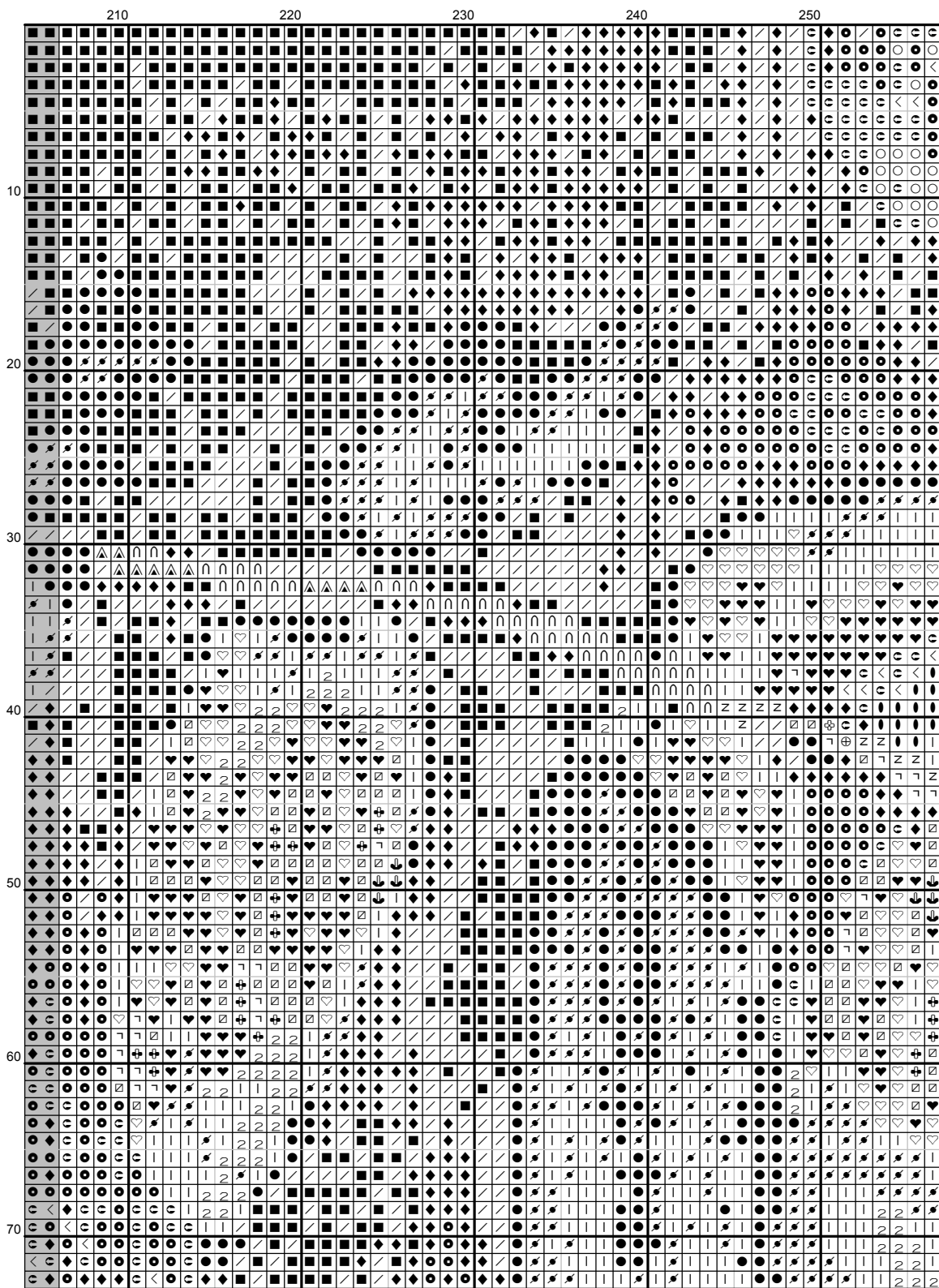
Design size: 20.00 x 19.89 inches or 50.80 x 50.52 cm

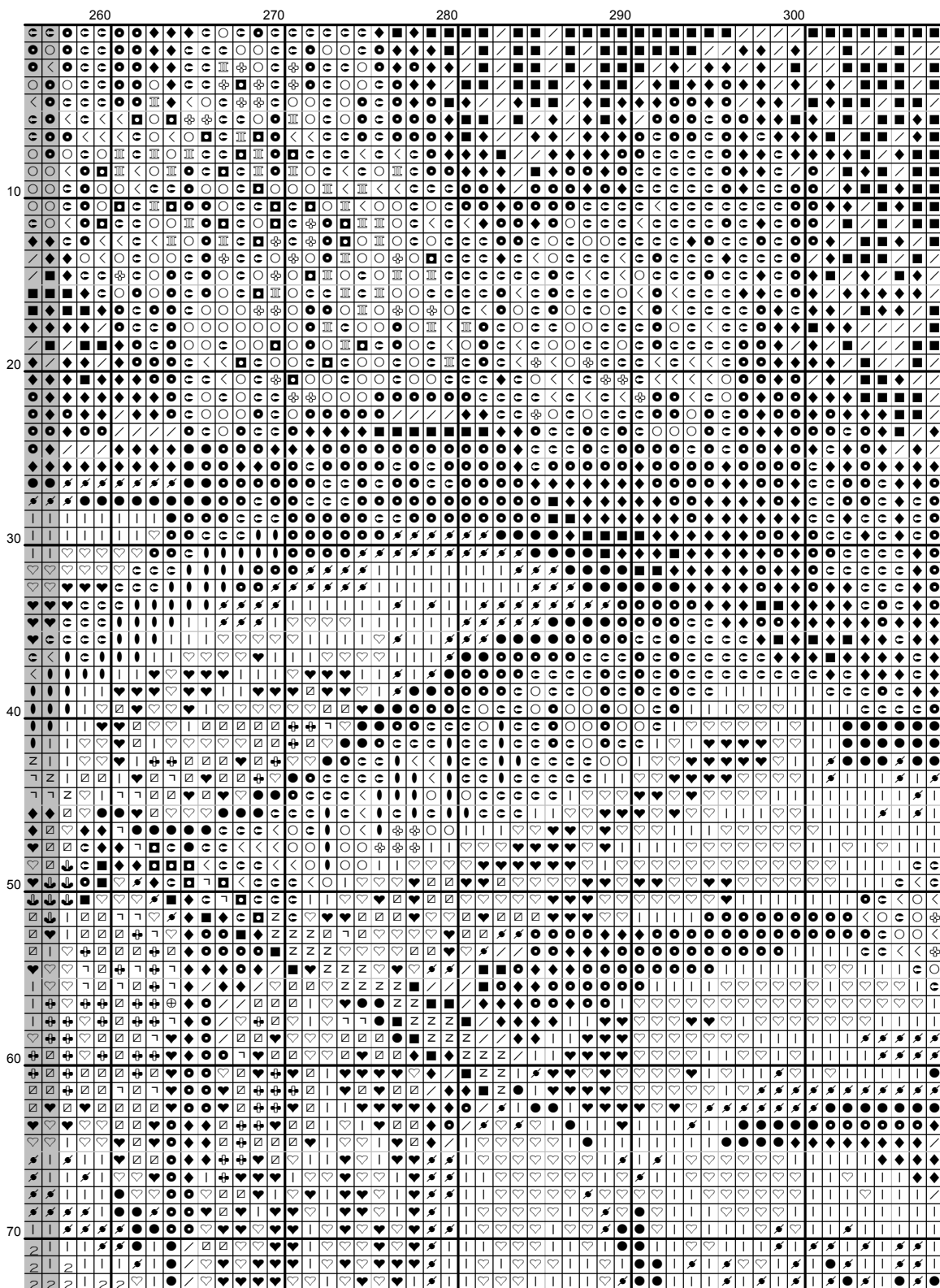


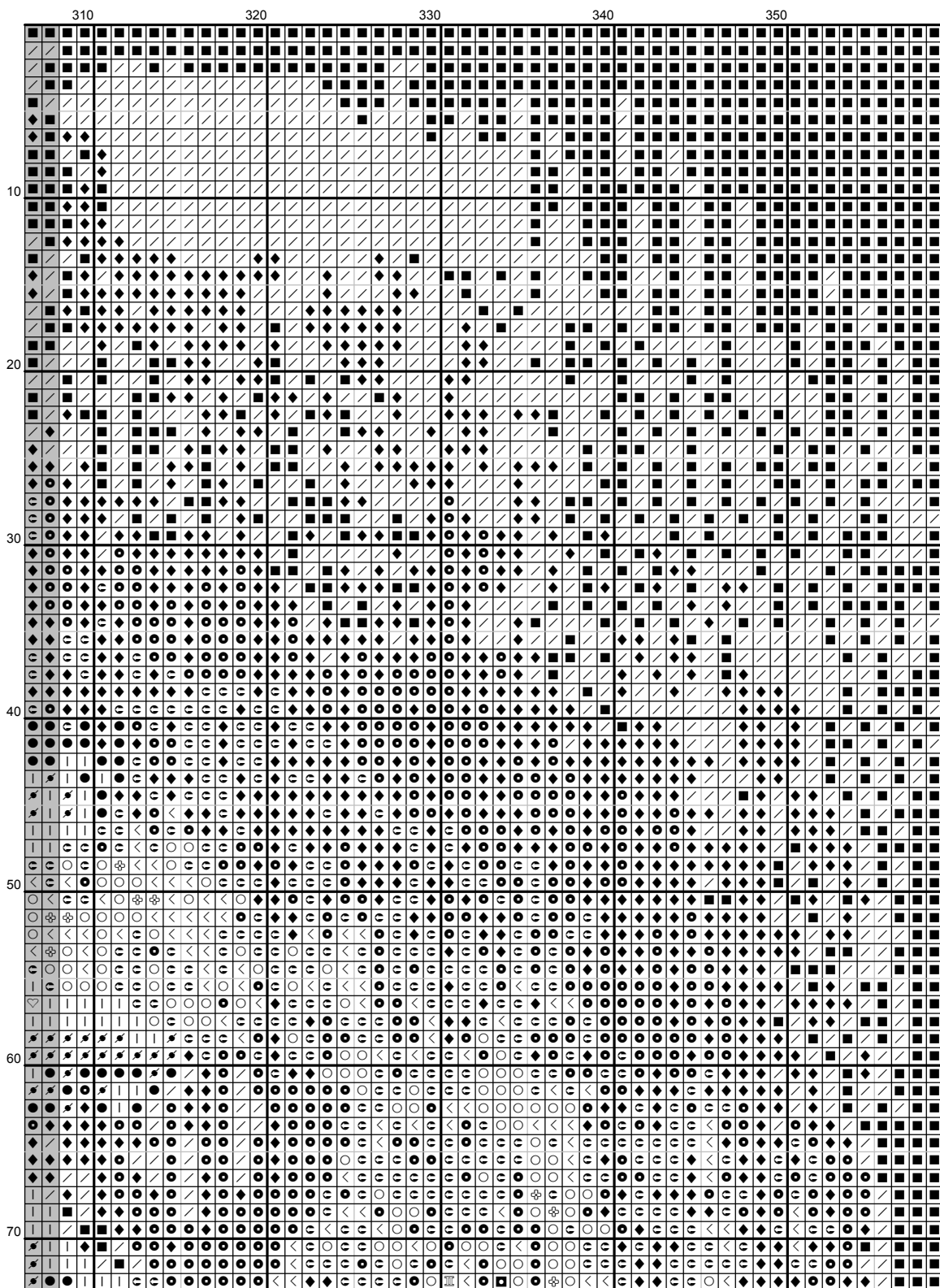


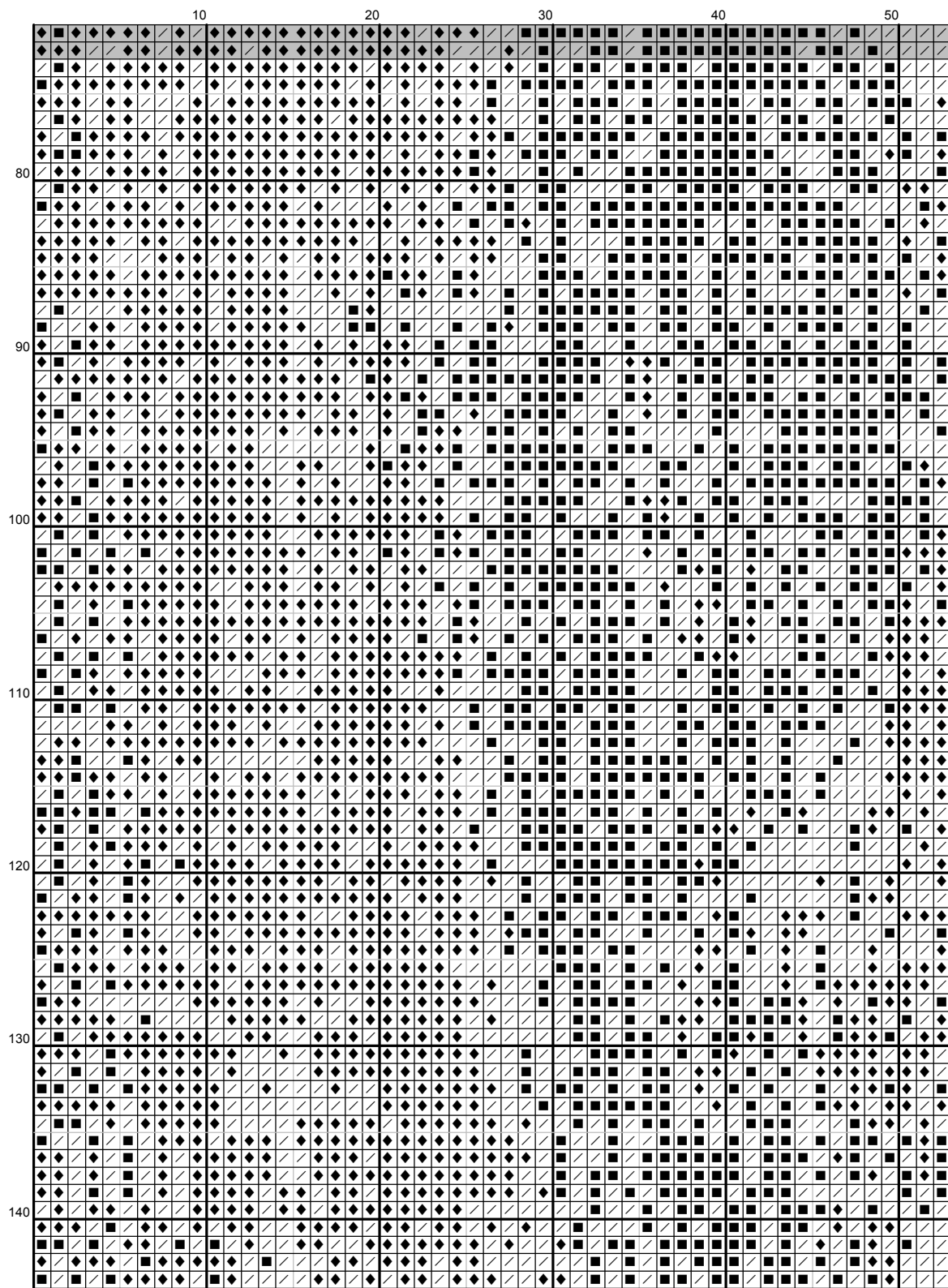


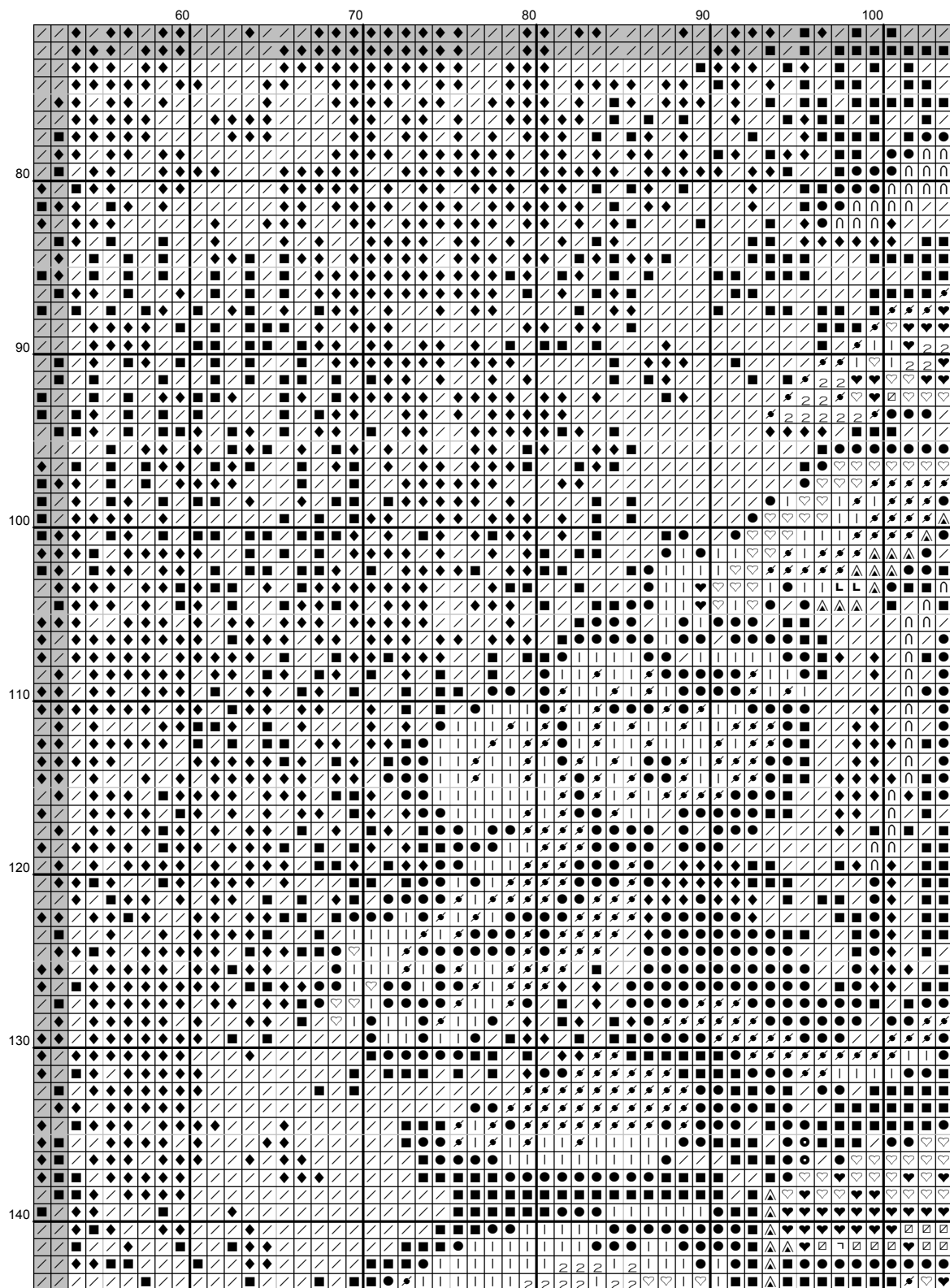


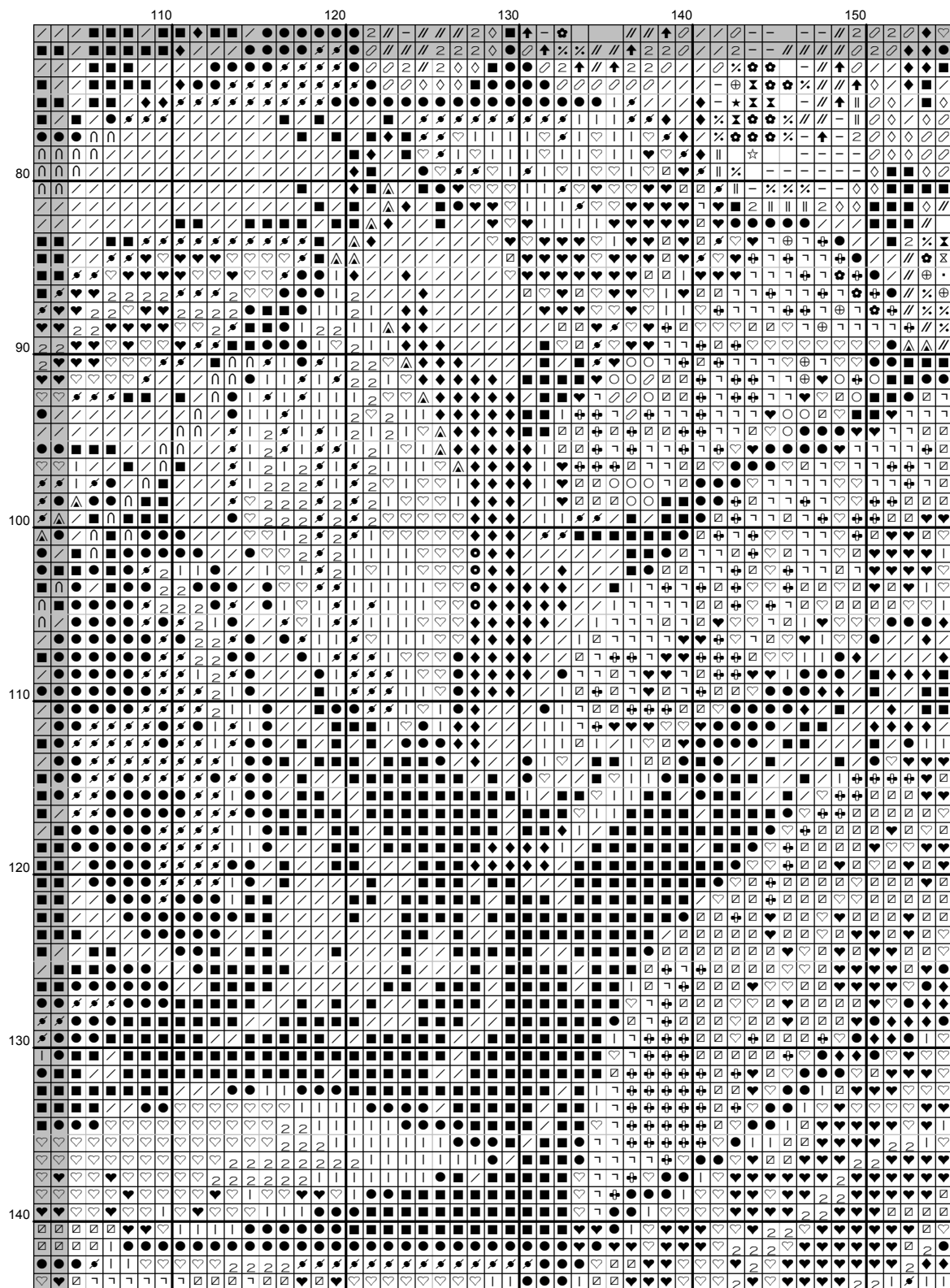


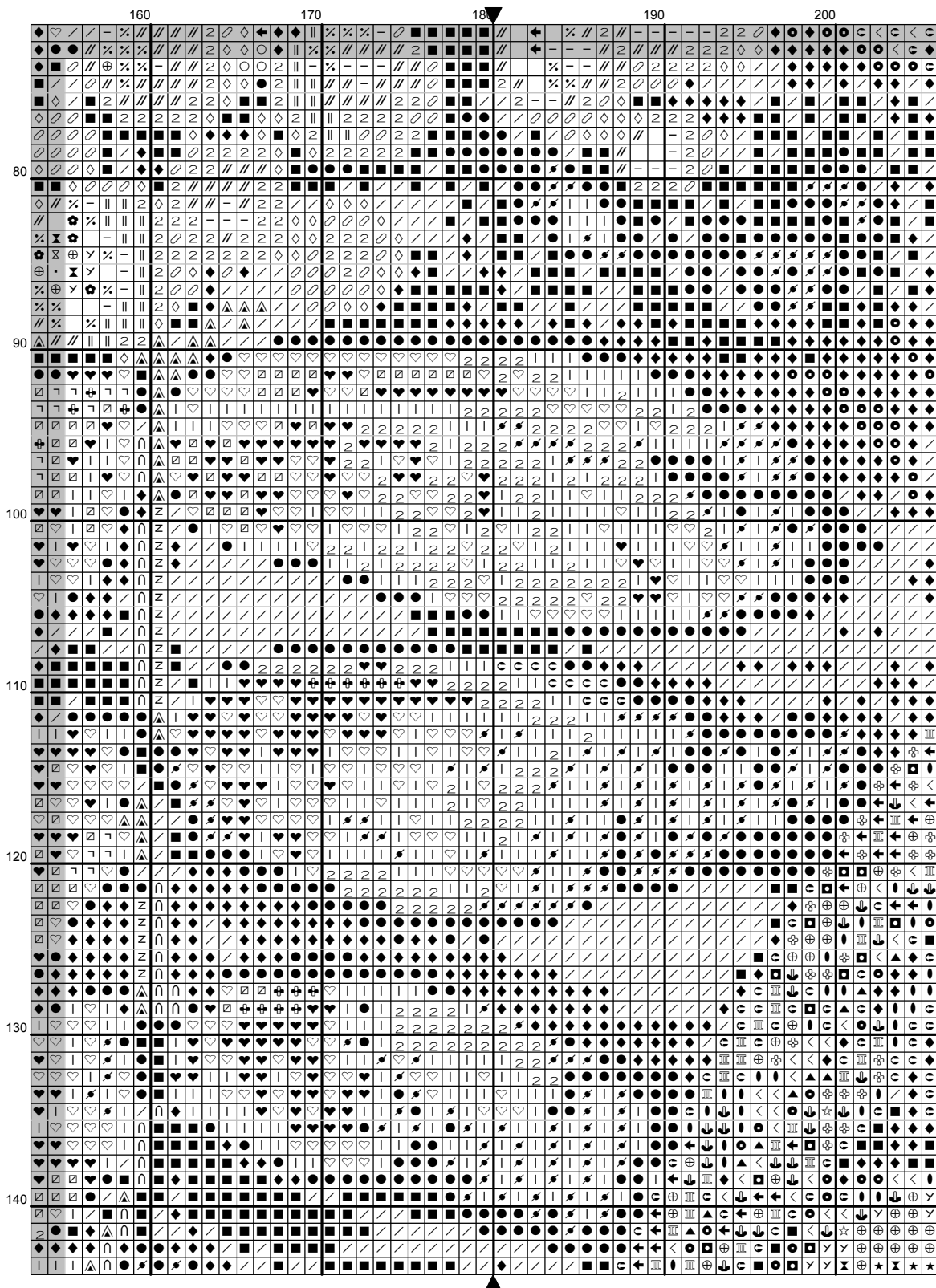


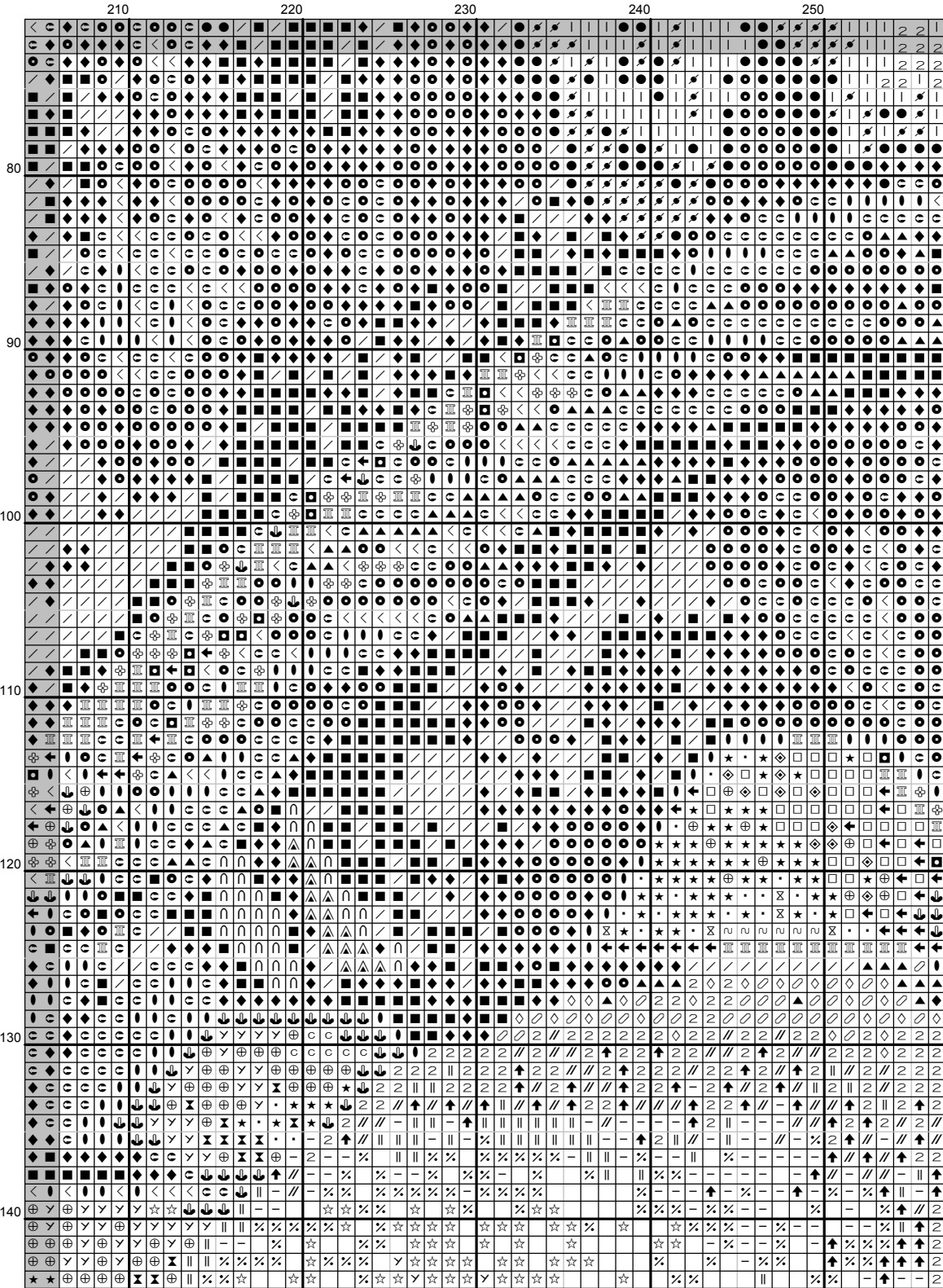


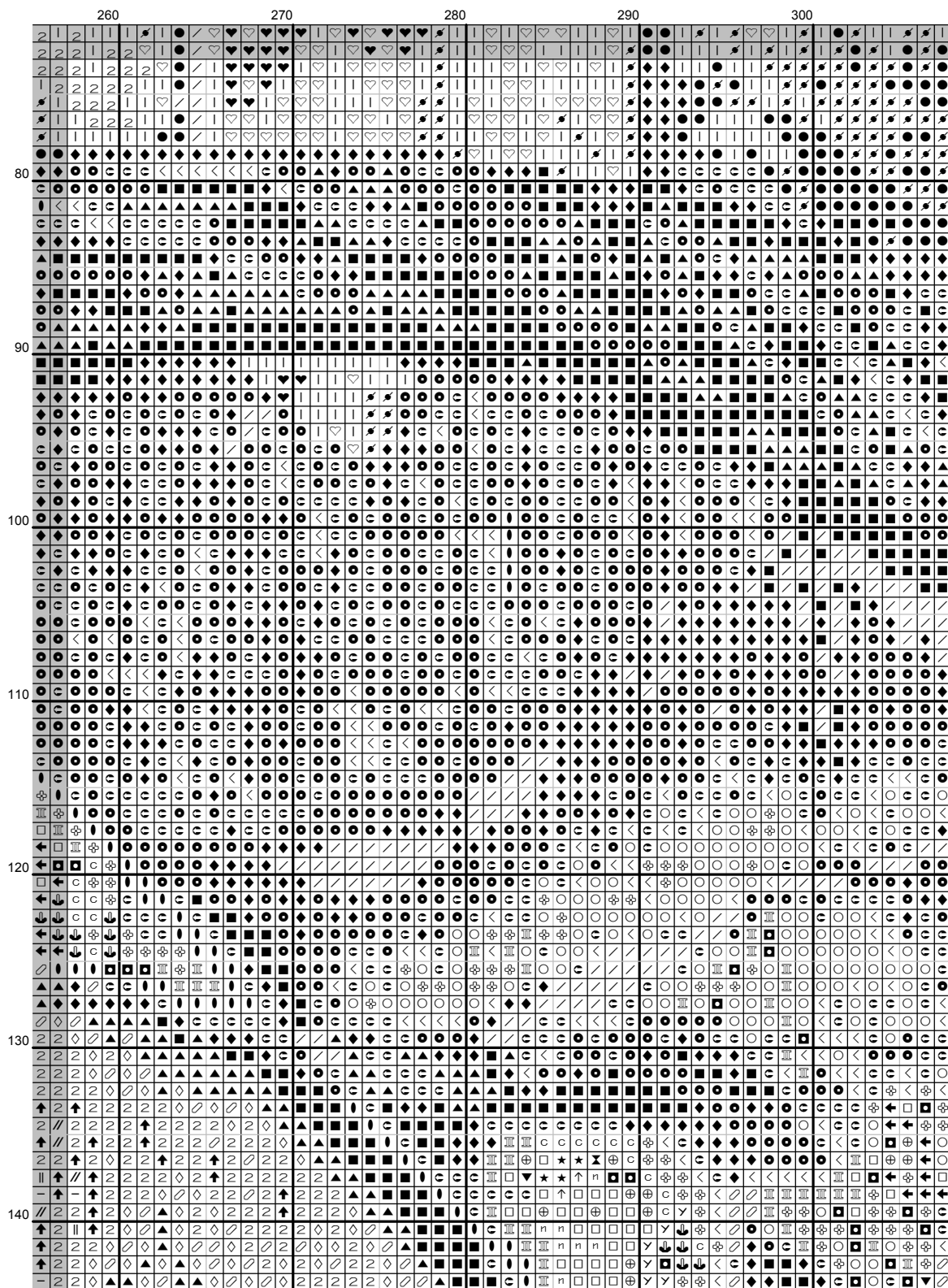


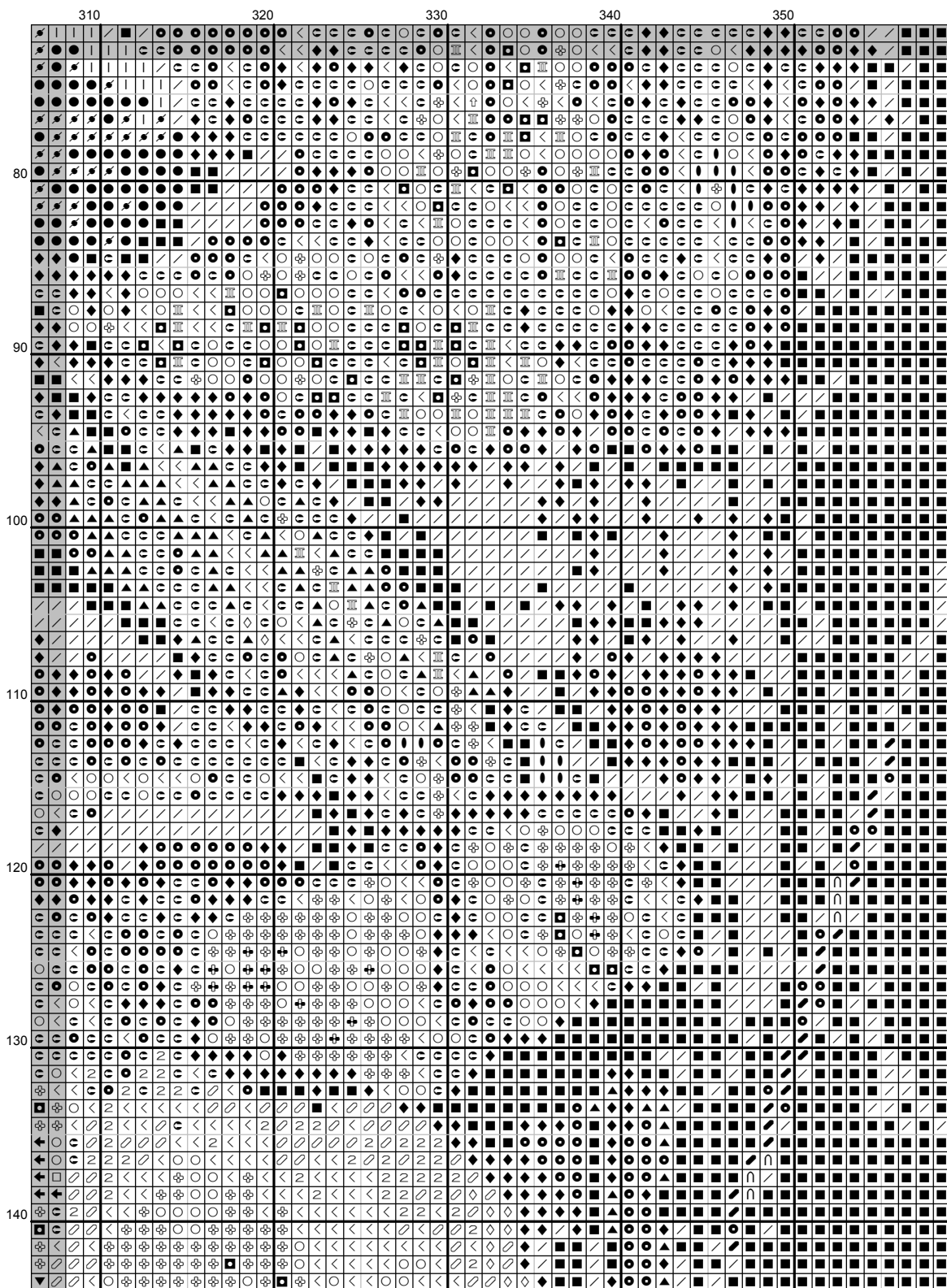


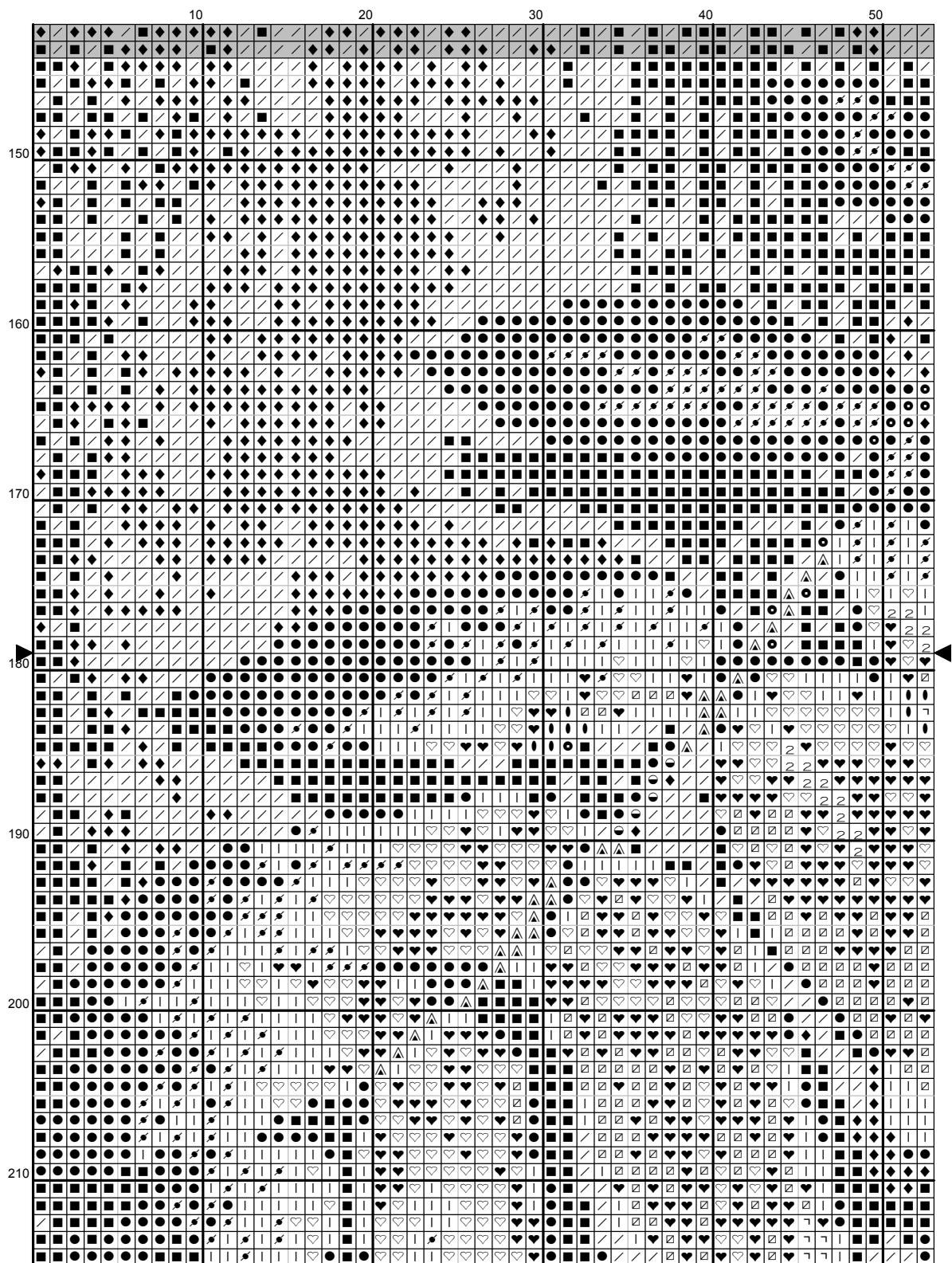


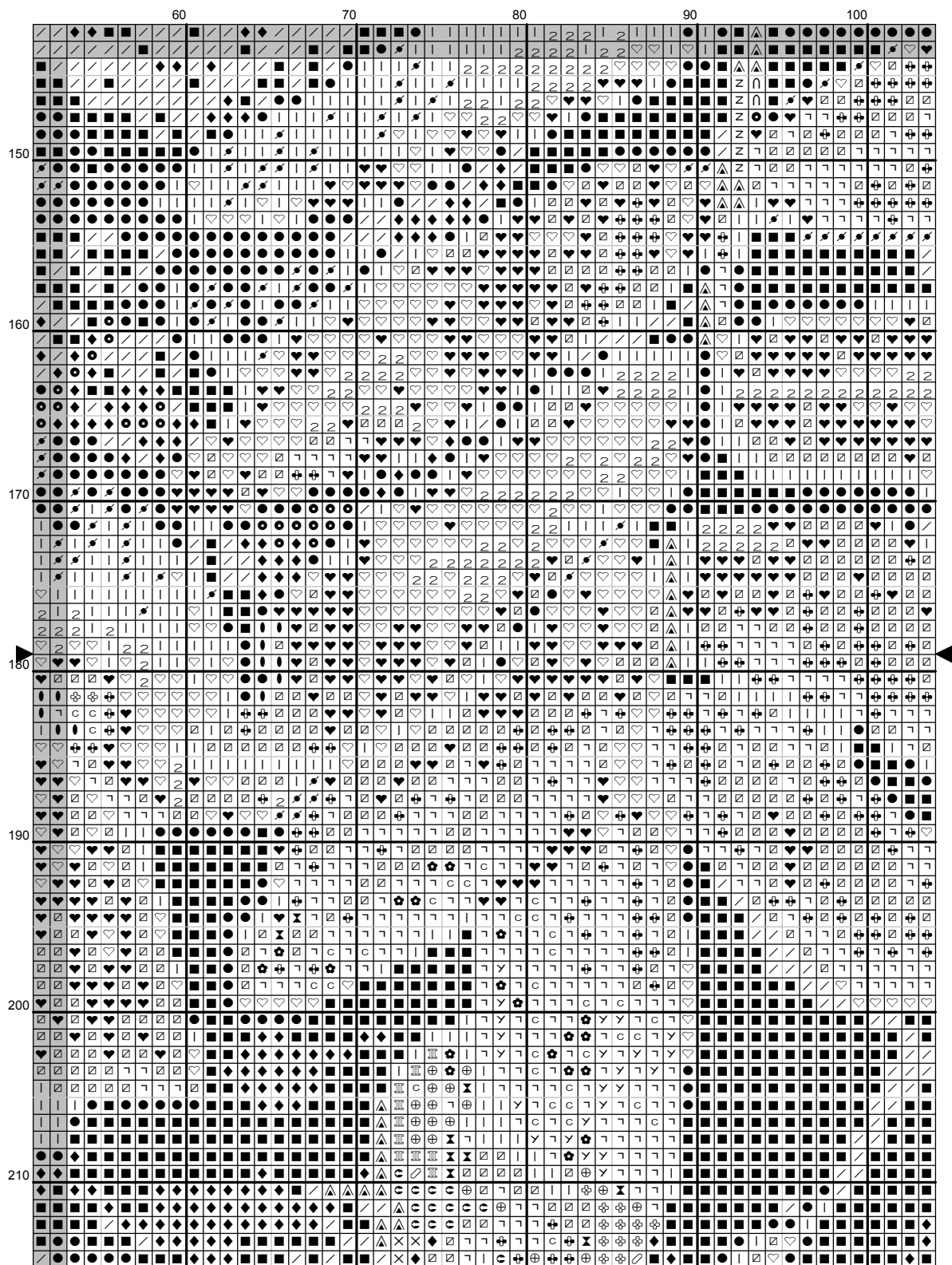


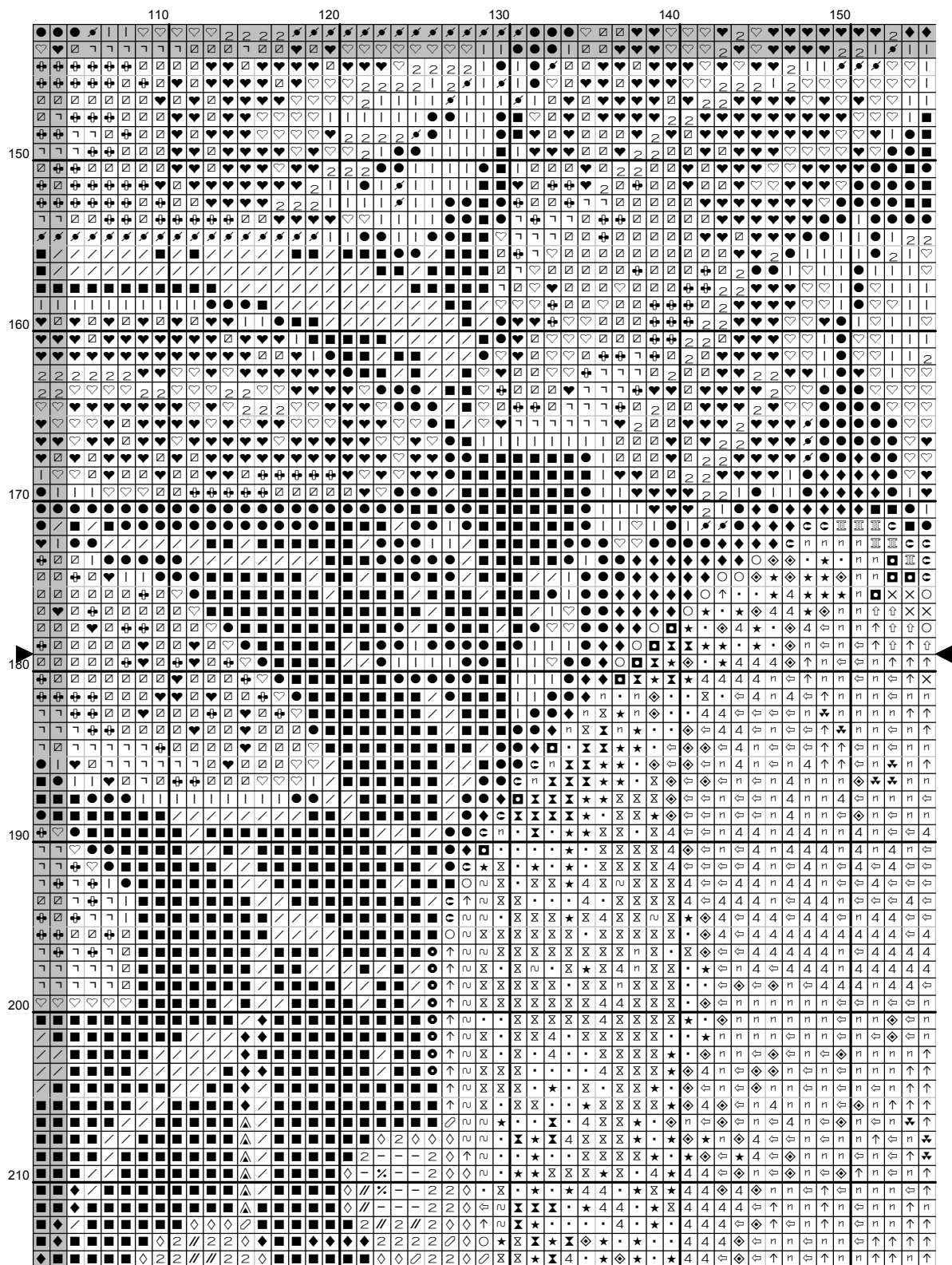


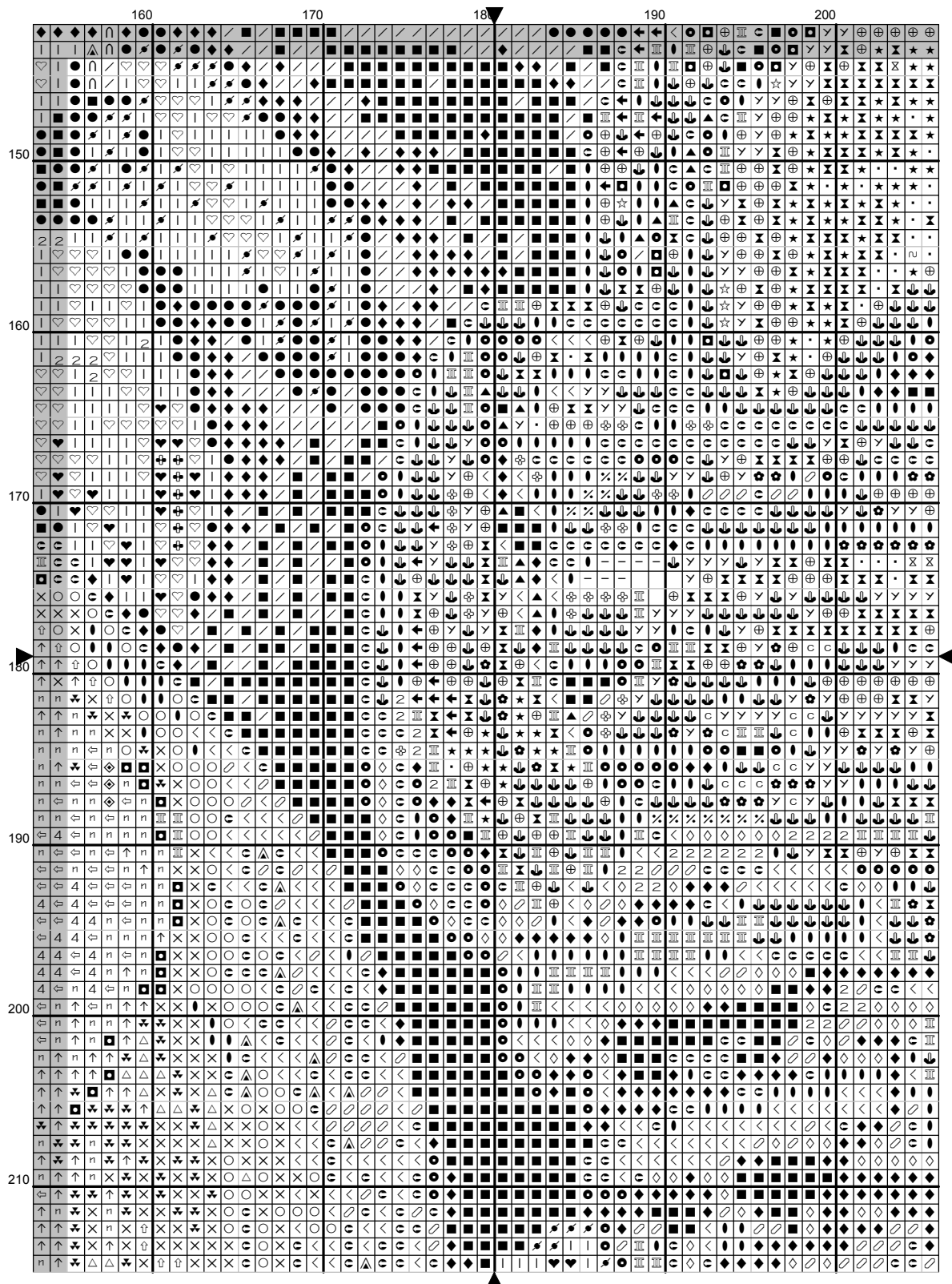


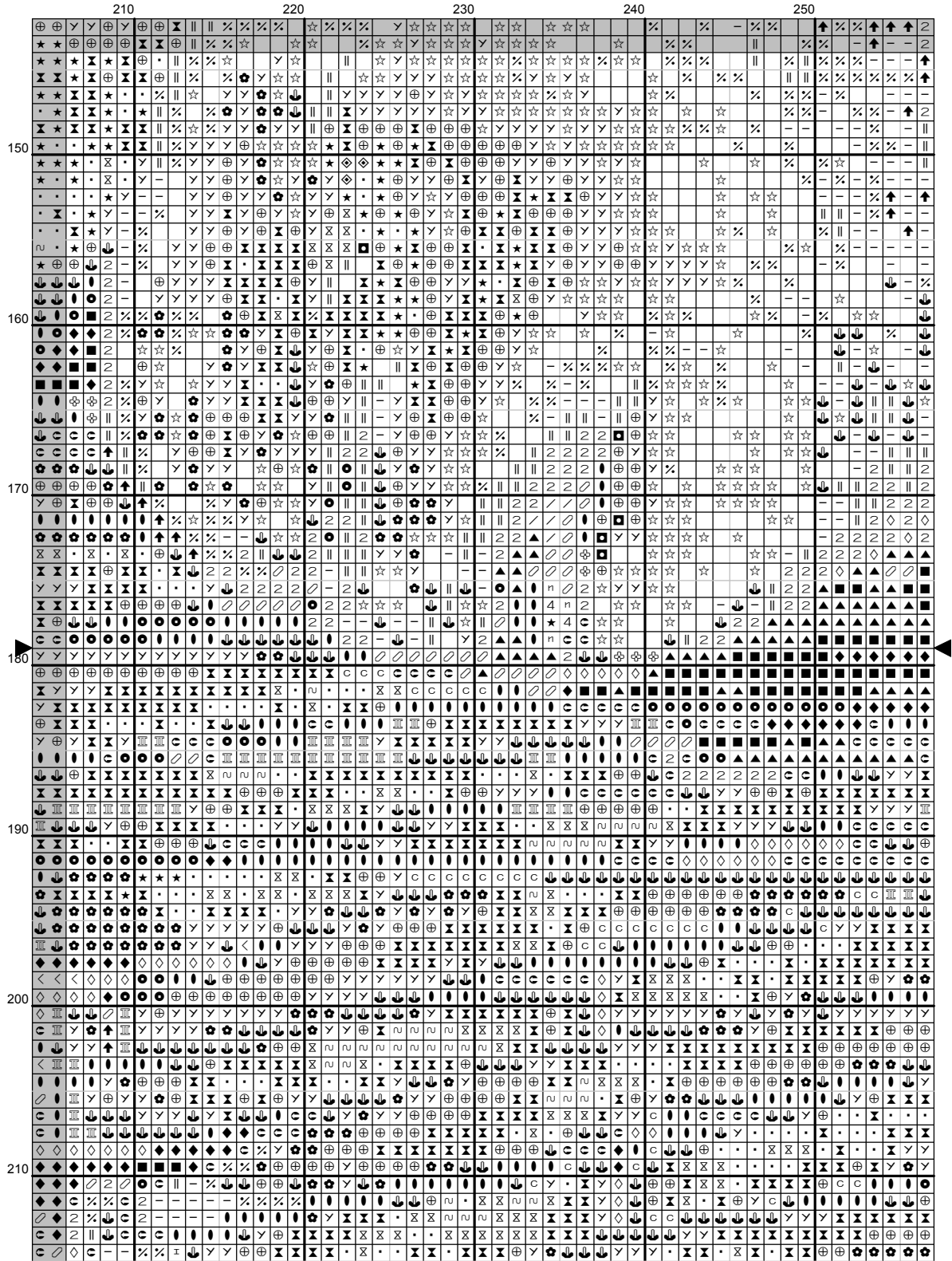


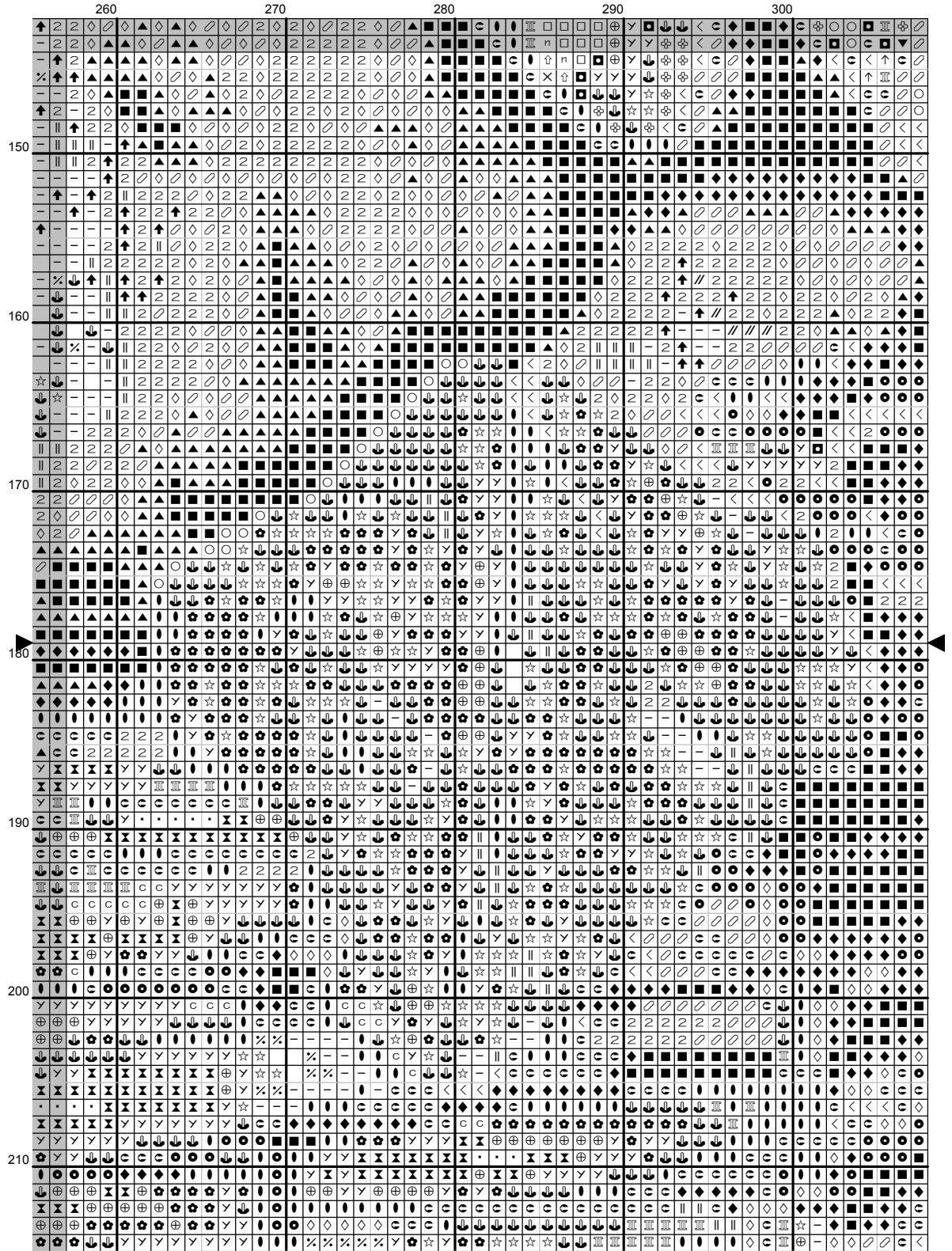


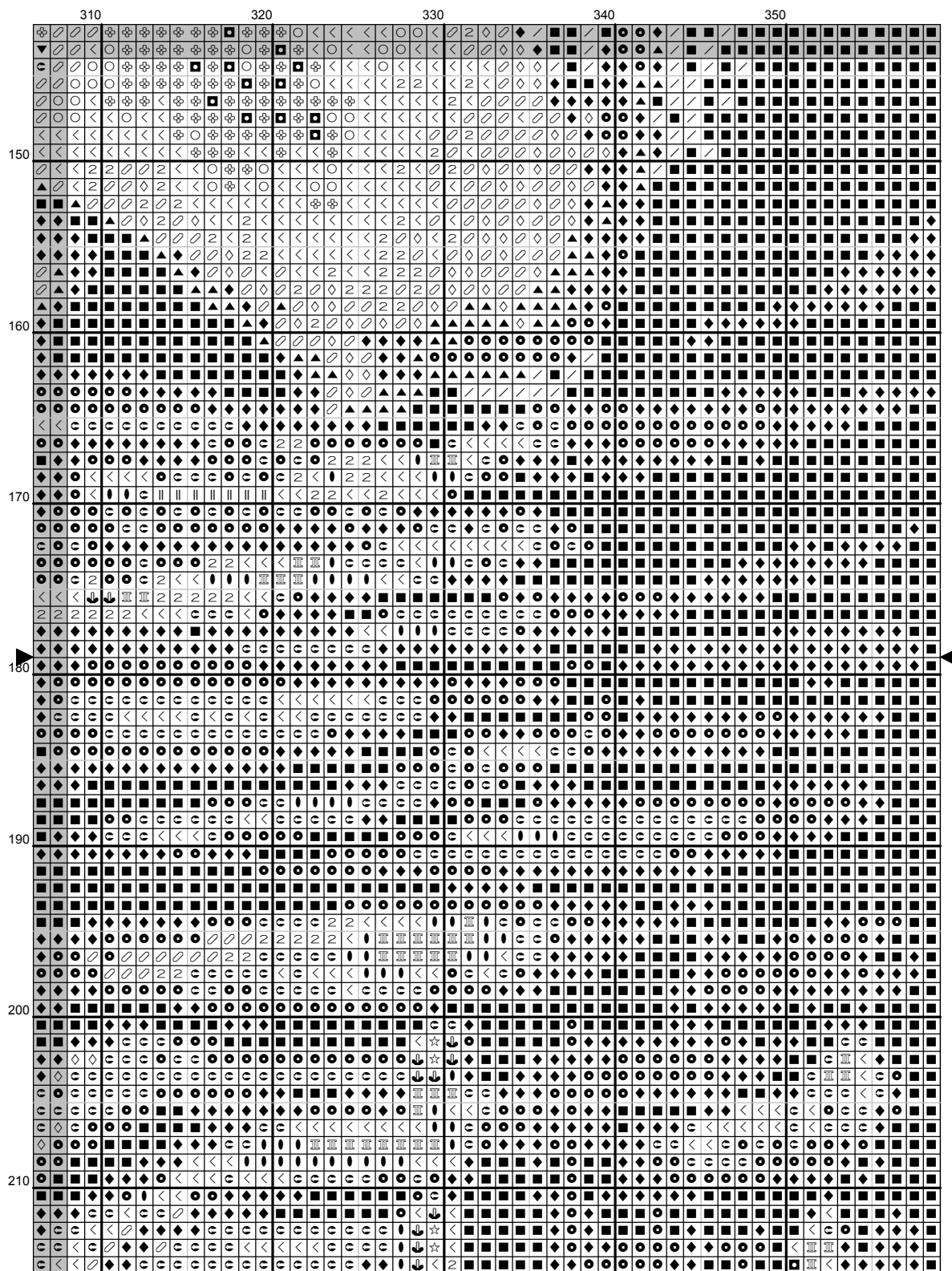


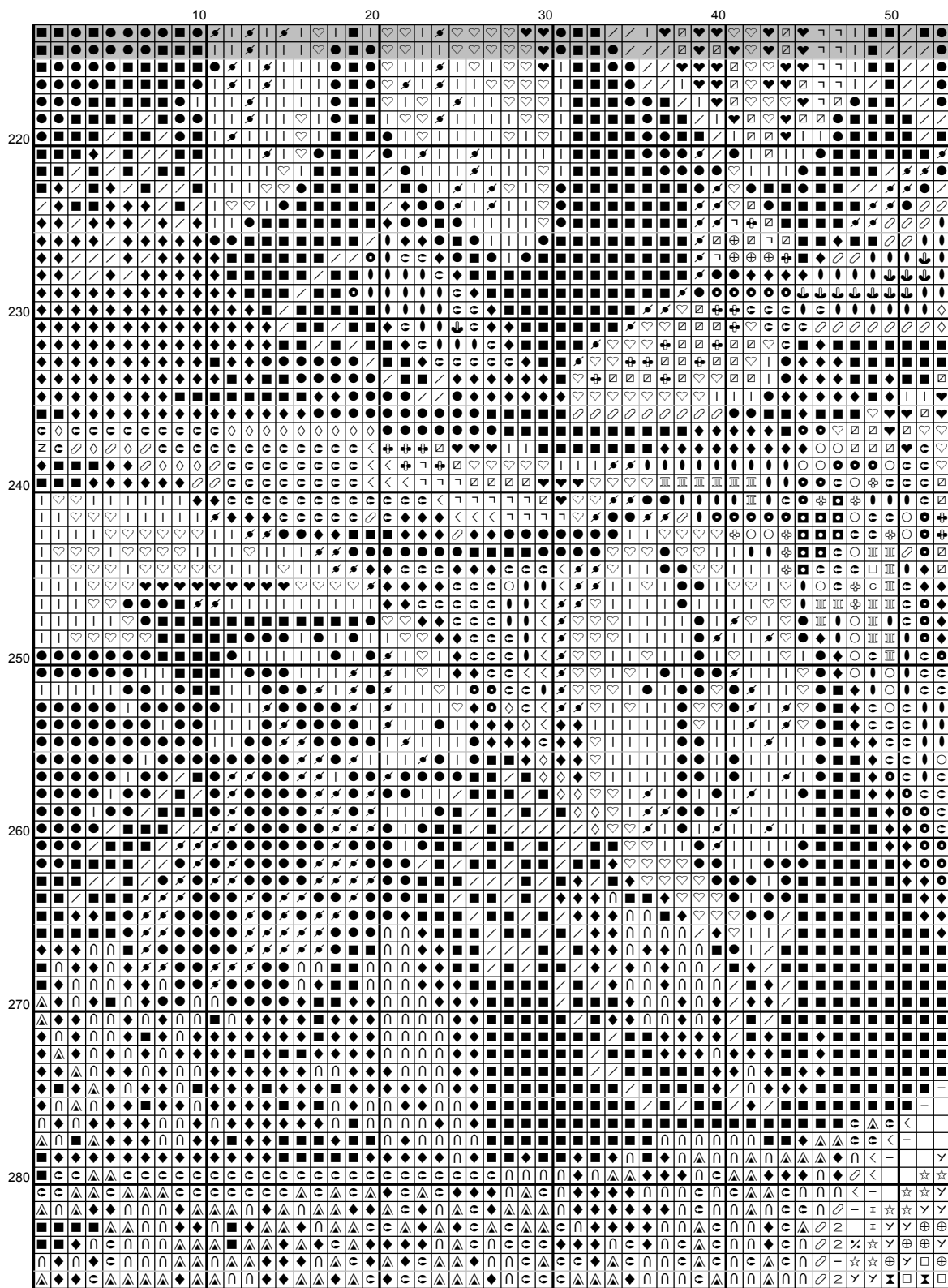


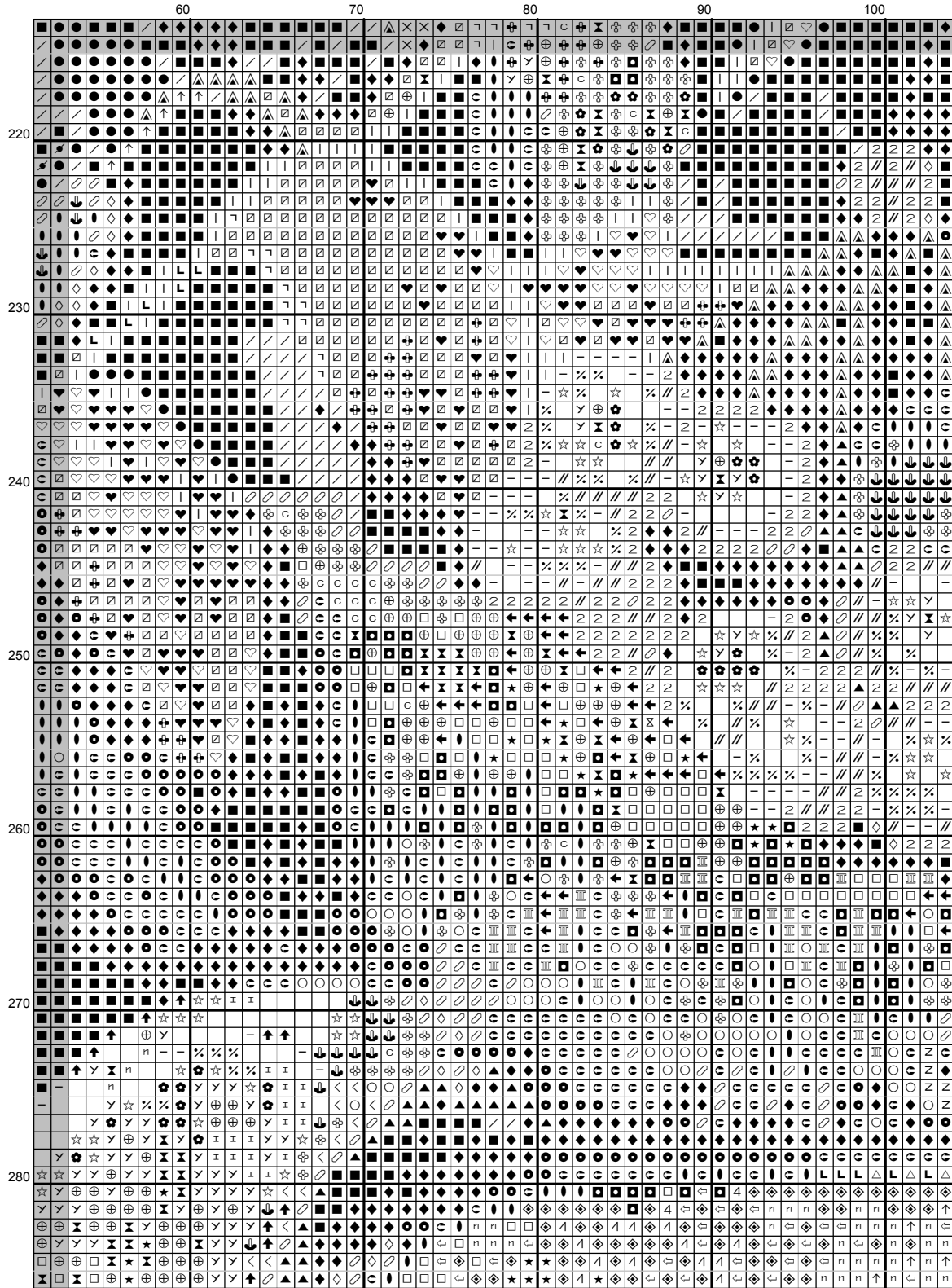


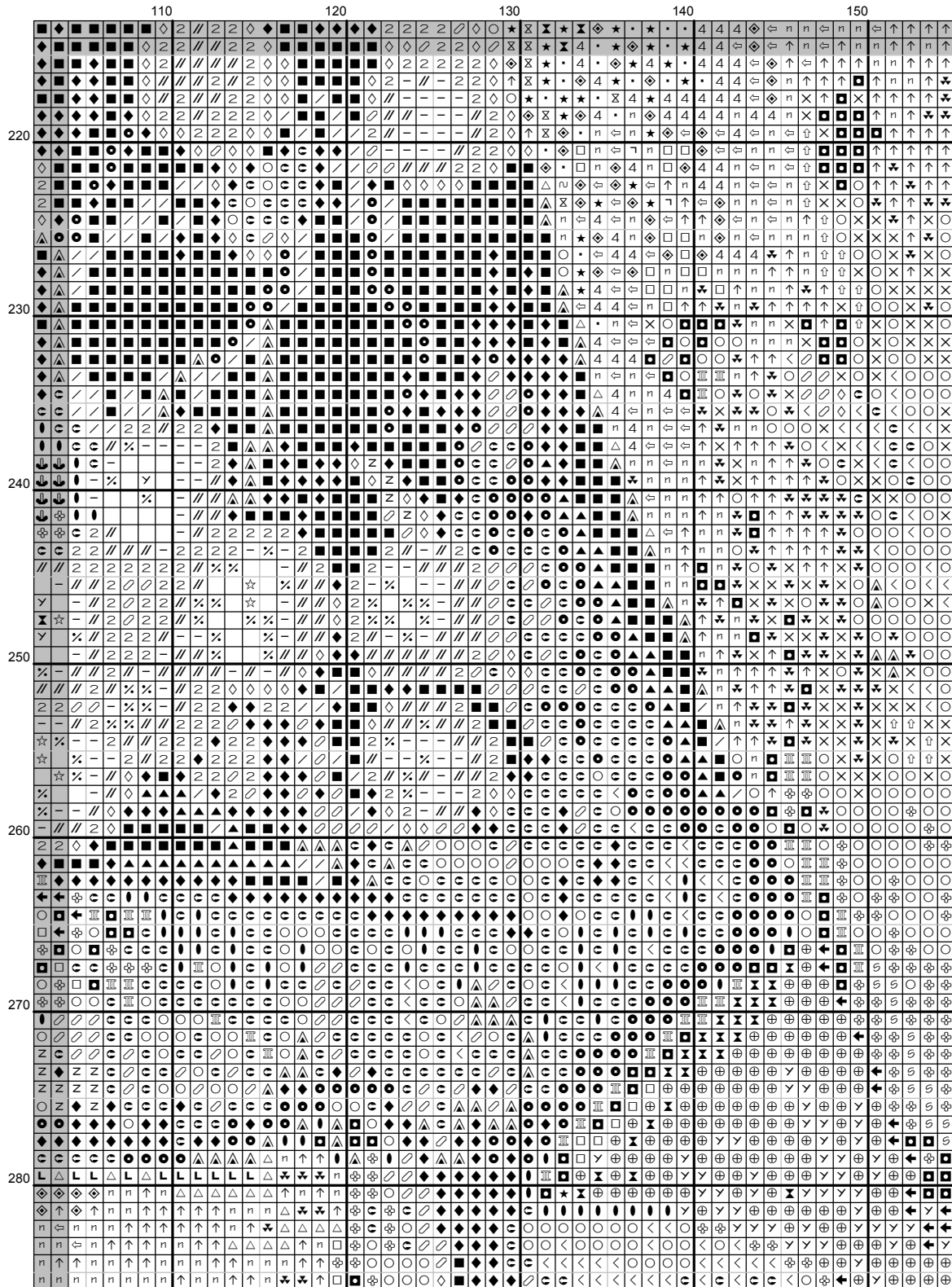


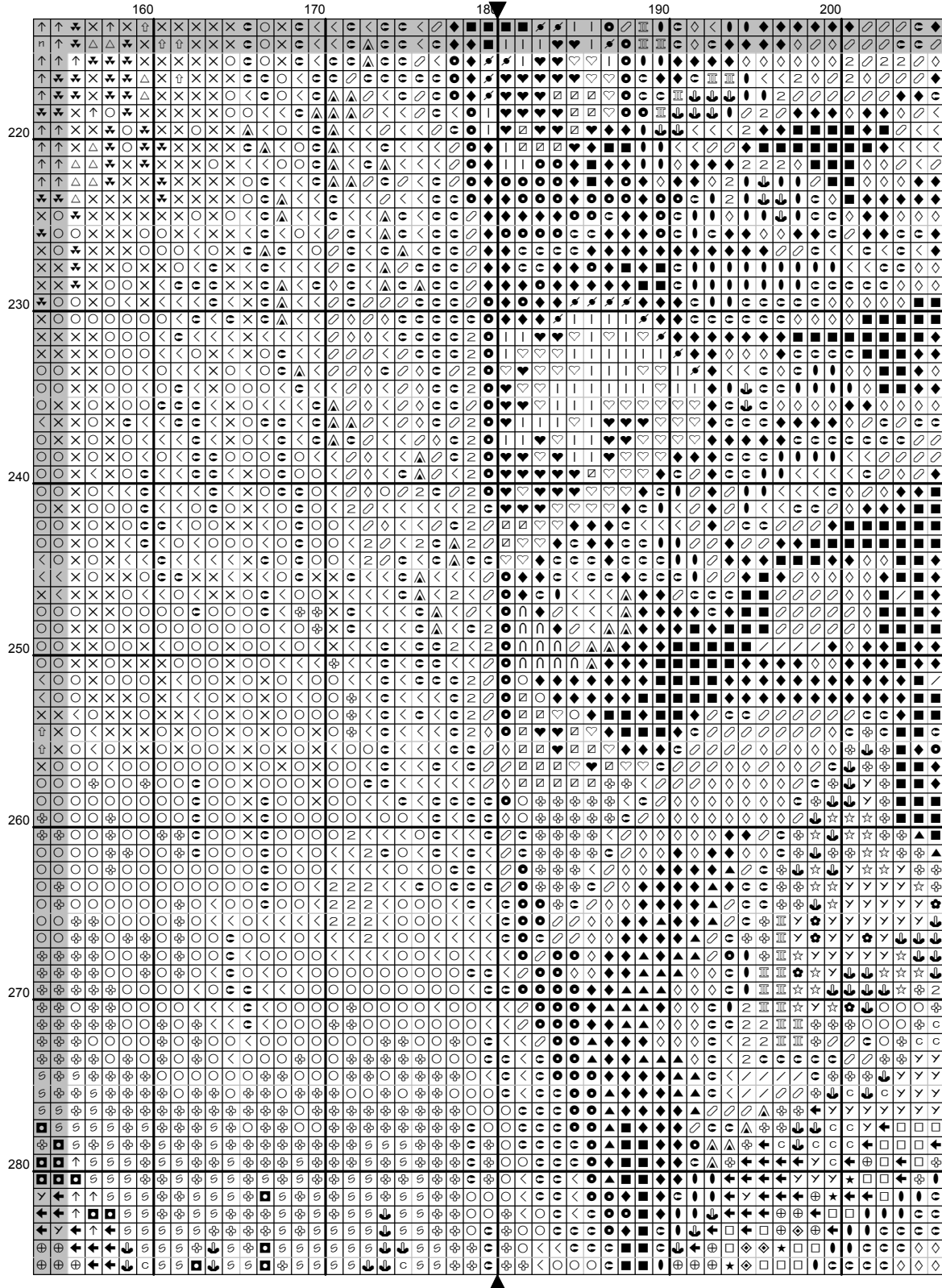


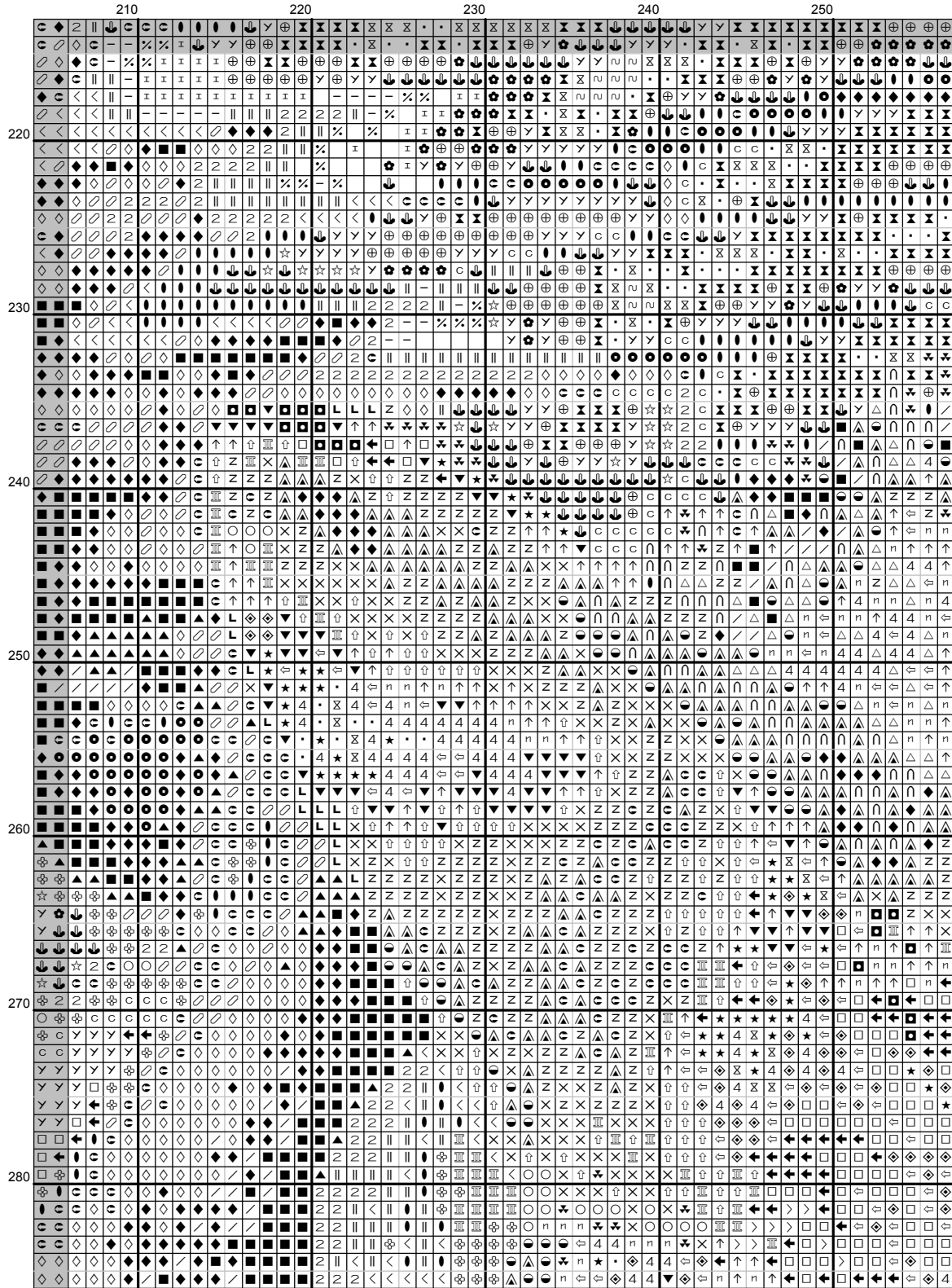


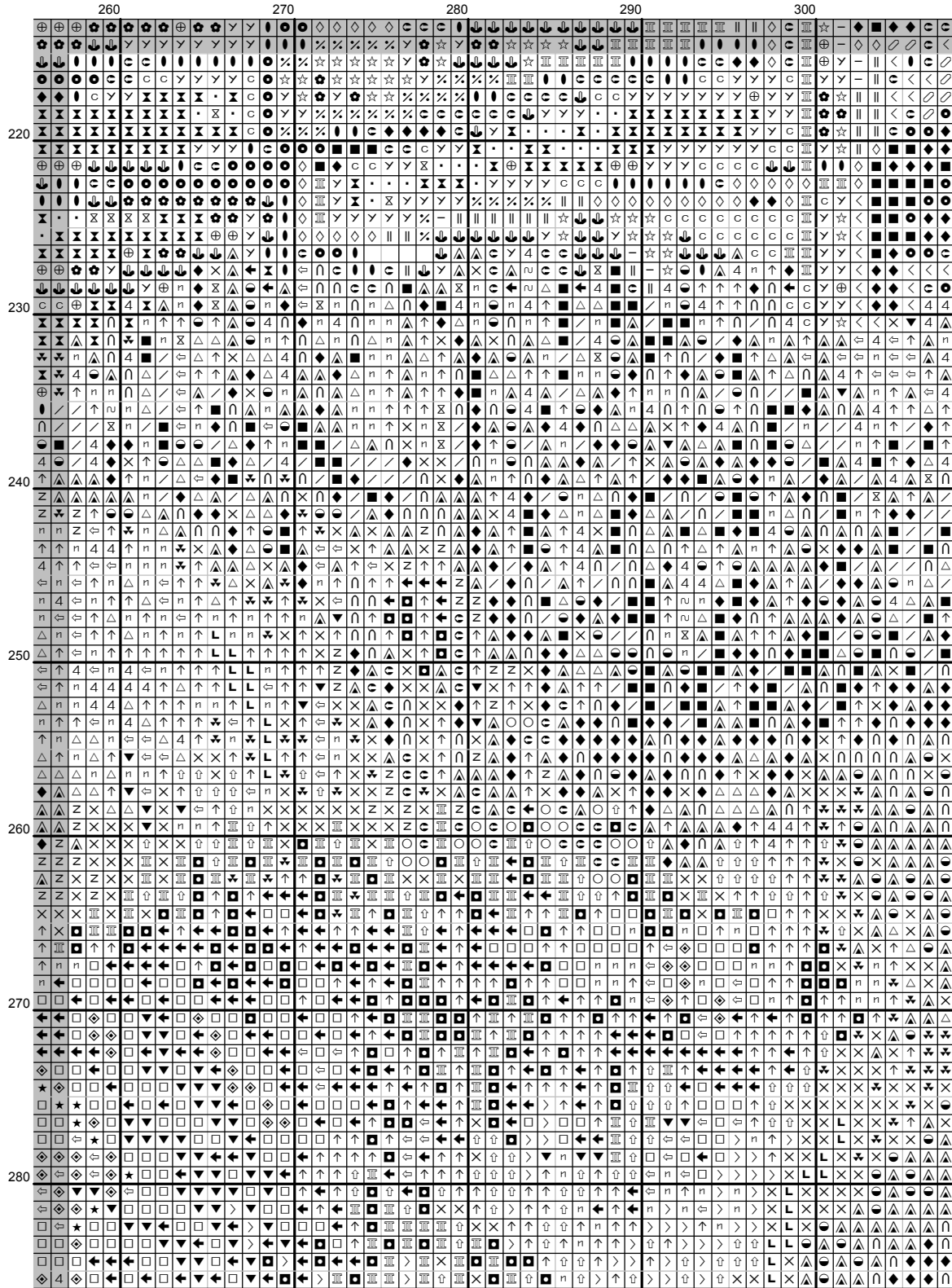


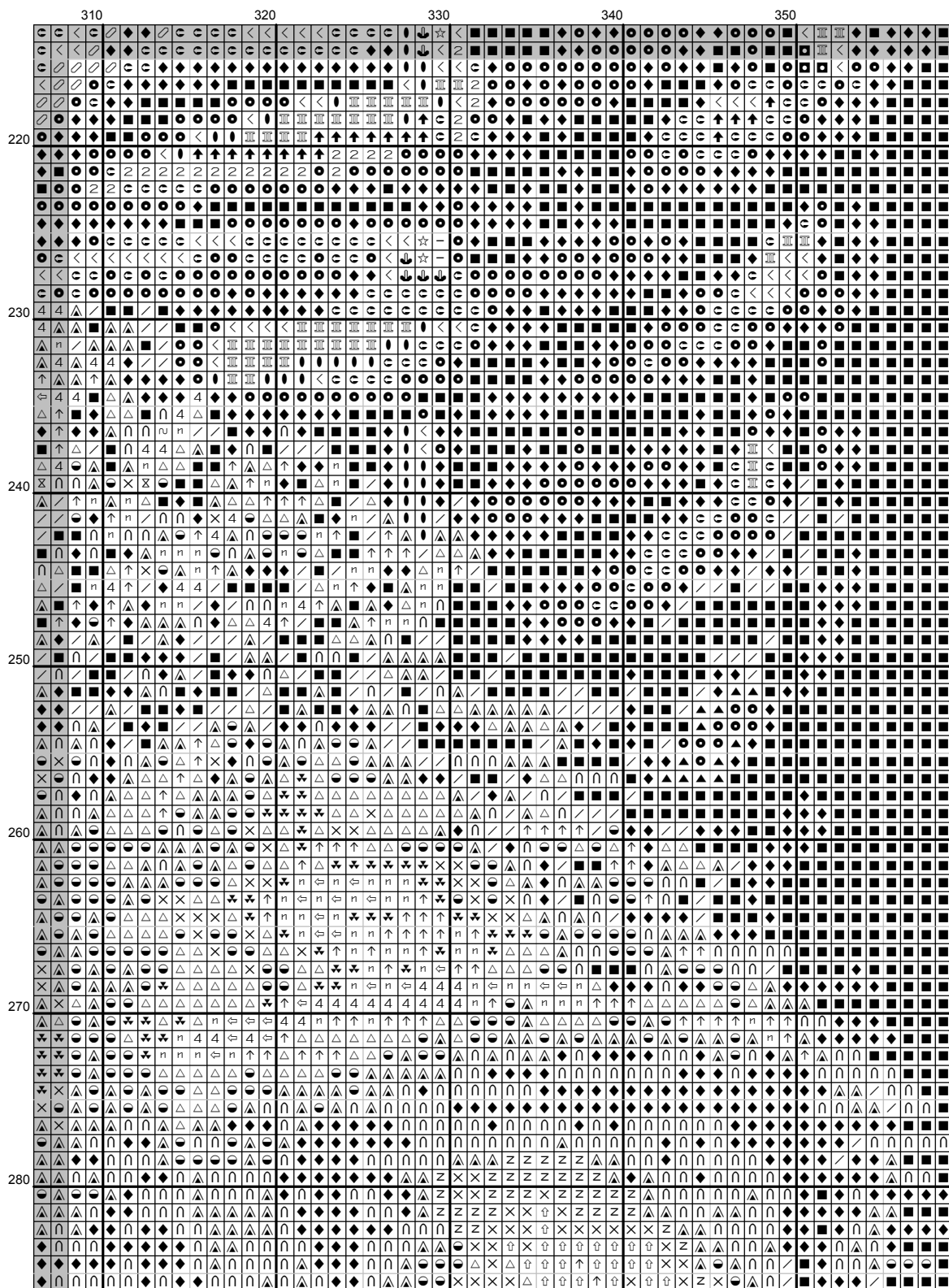


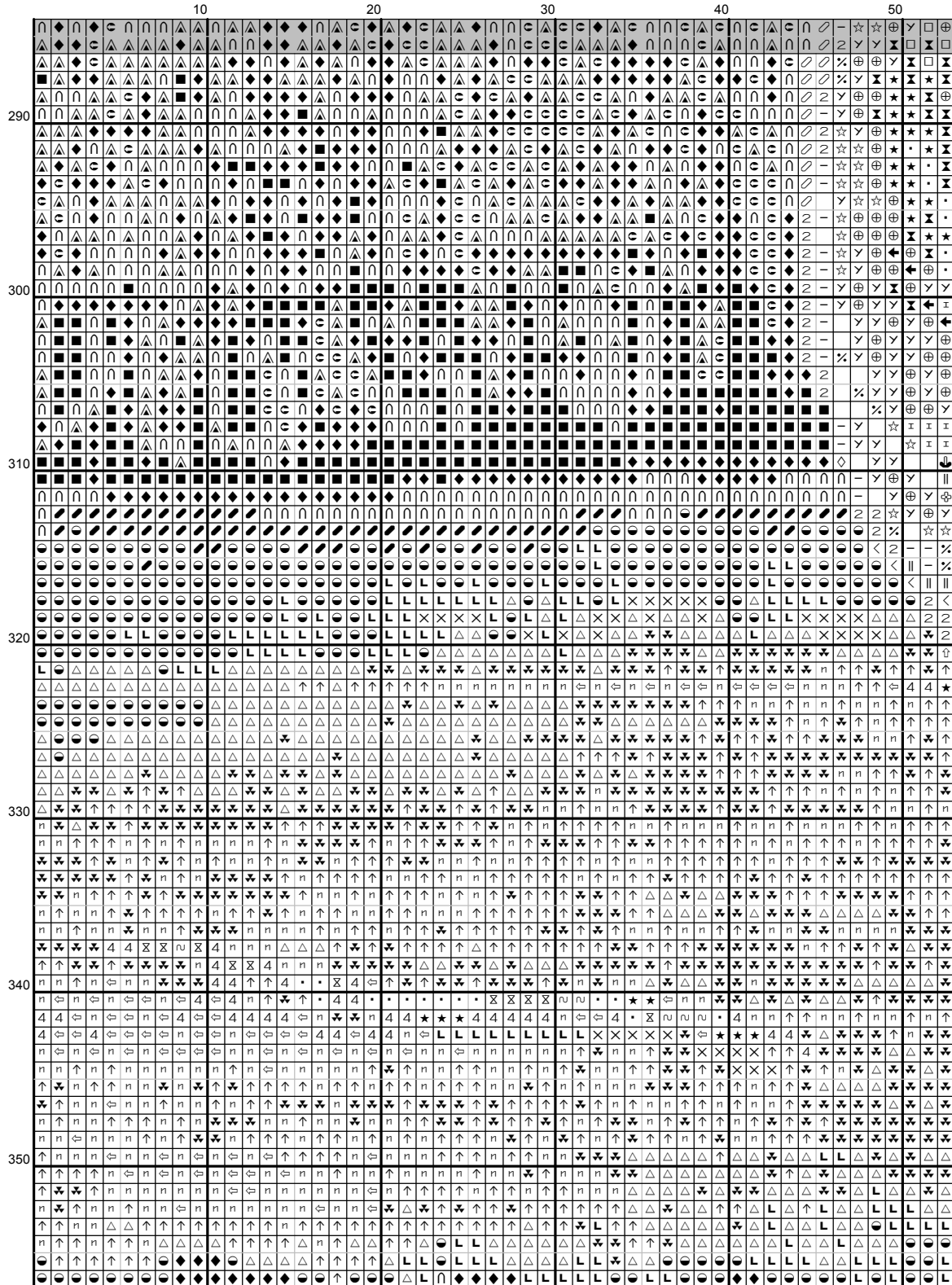


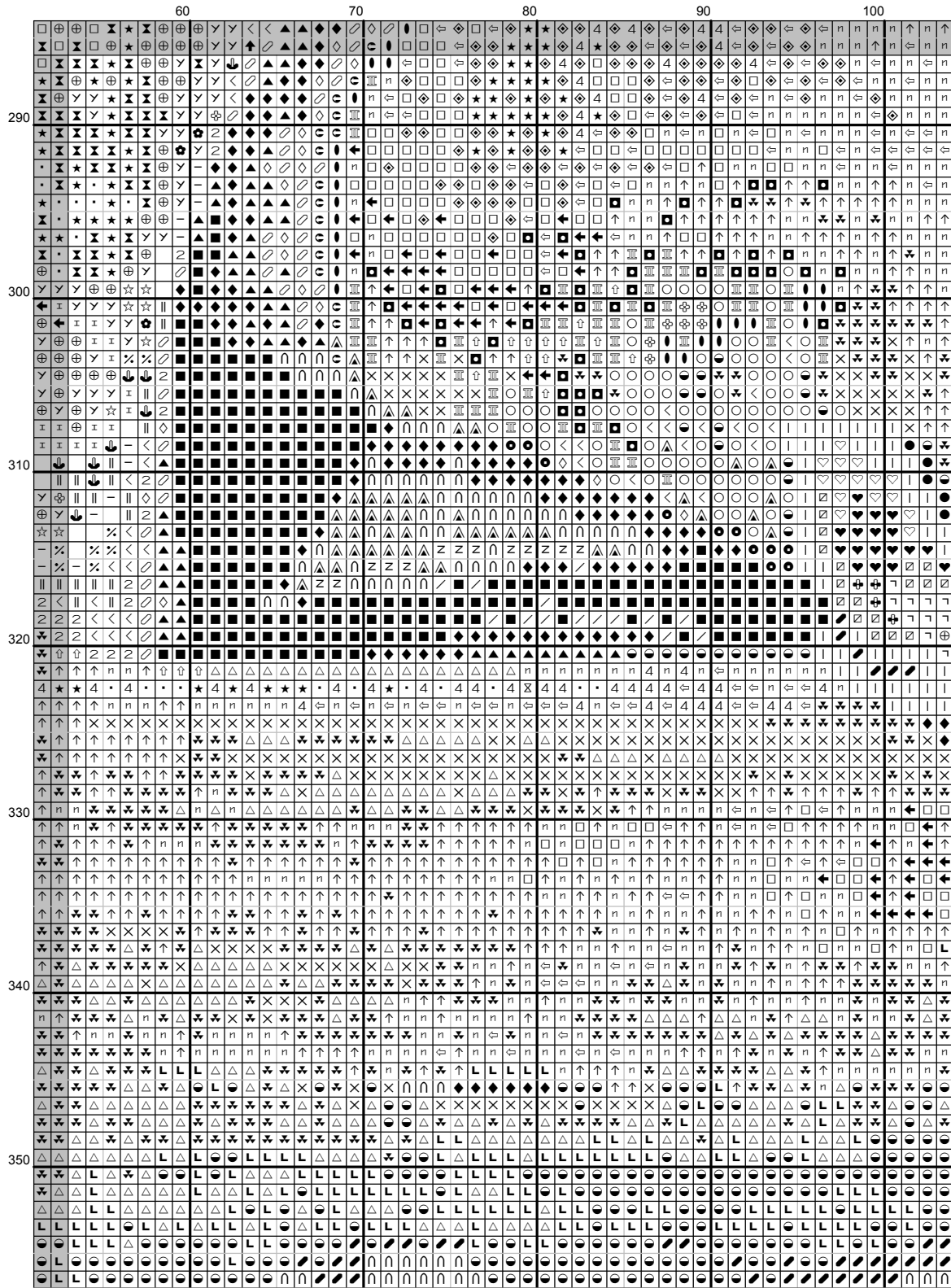


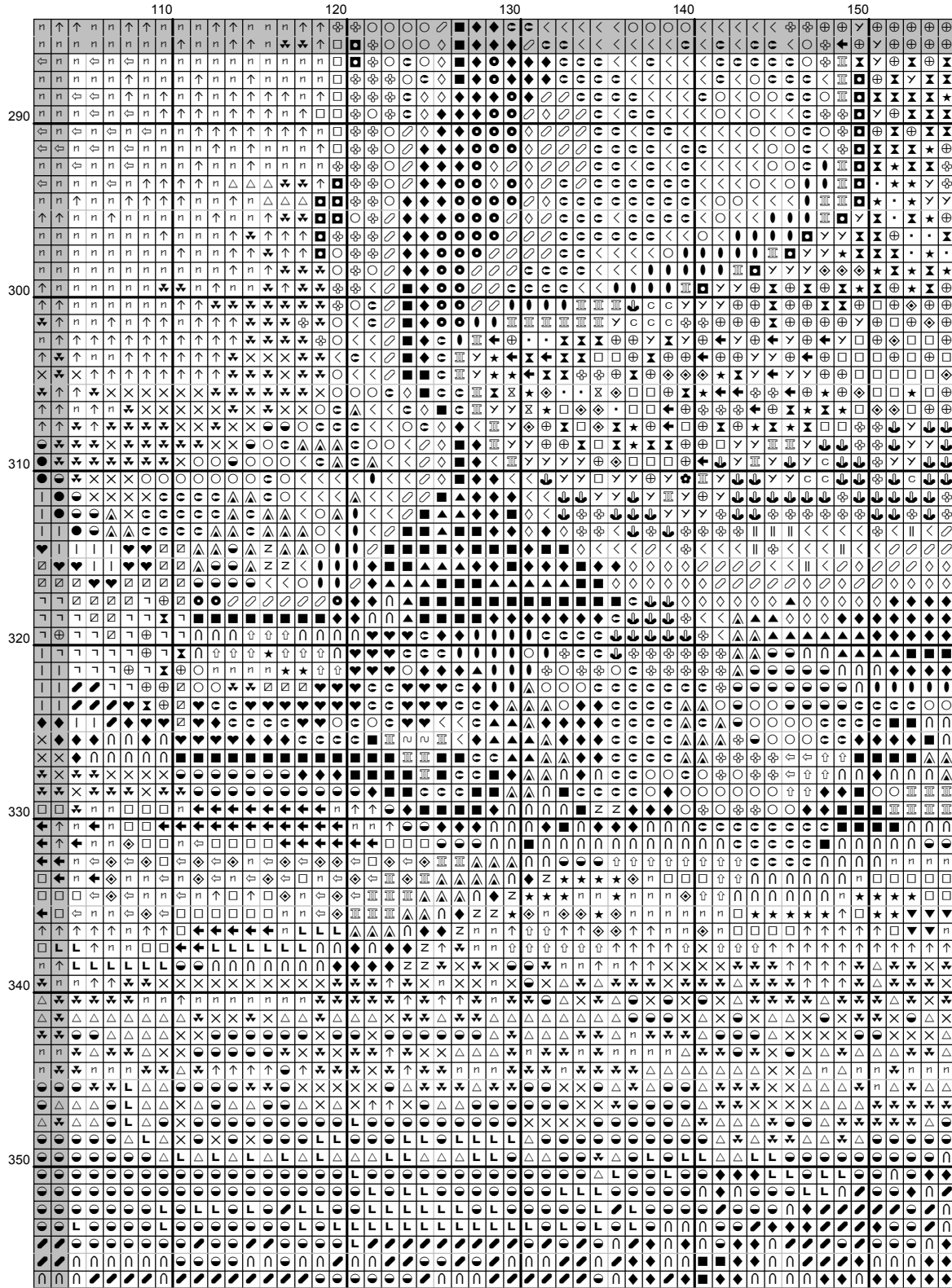


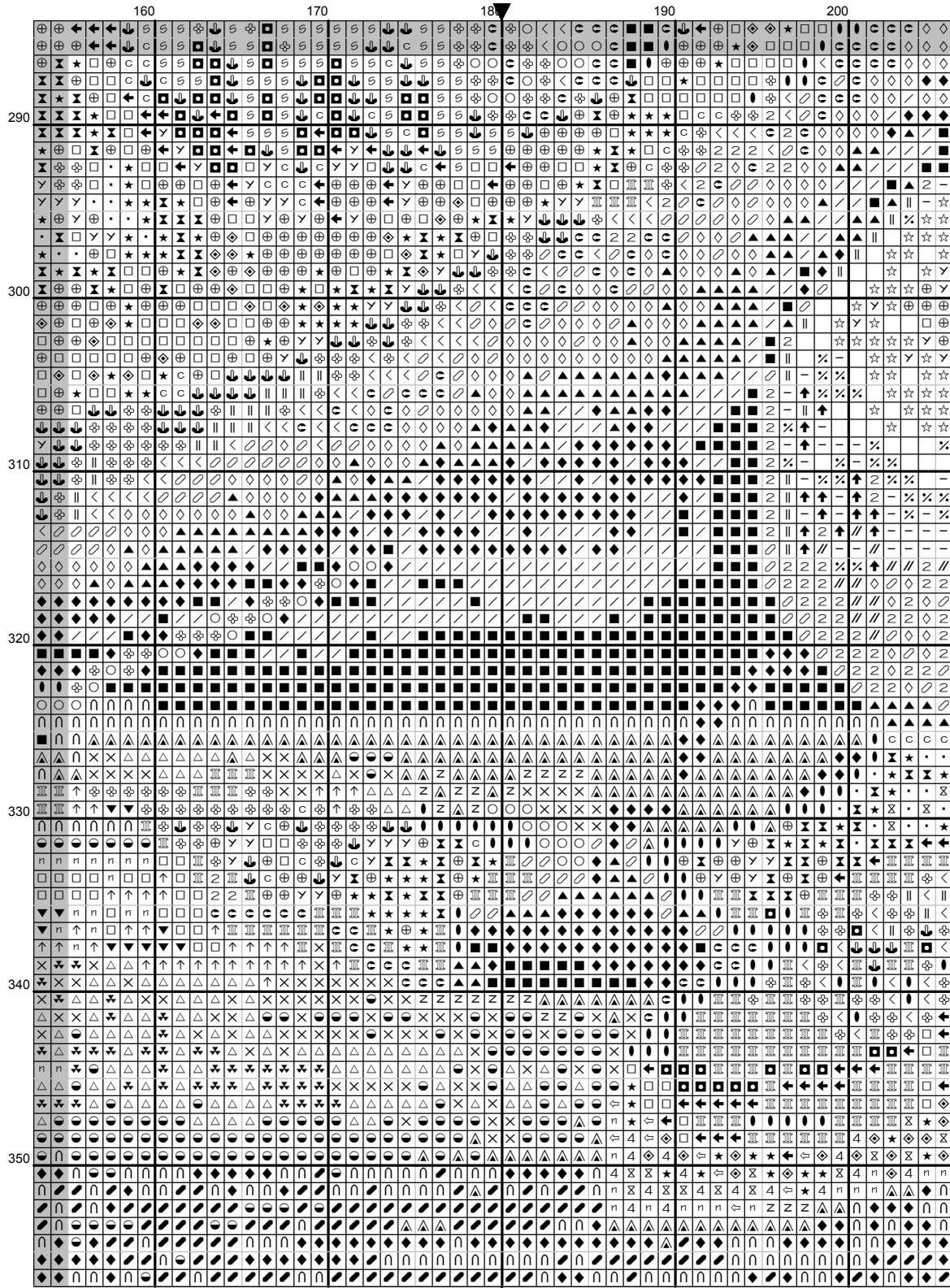


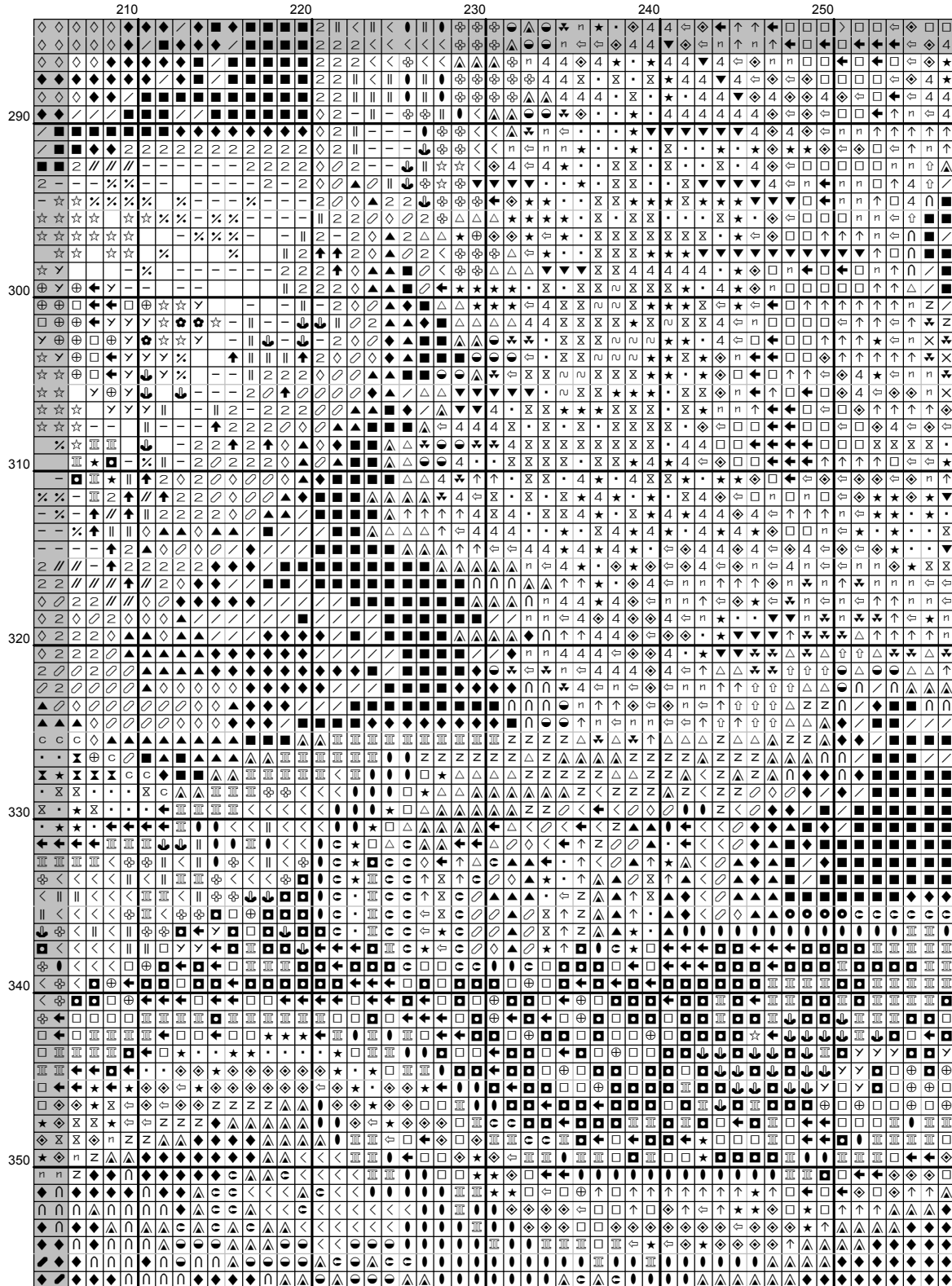


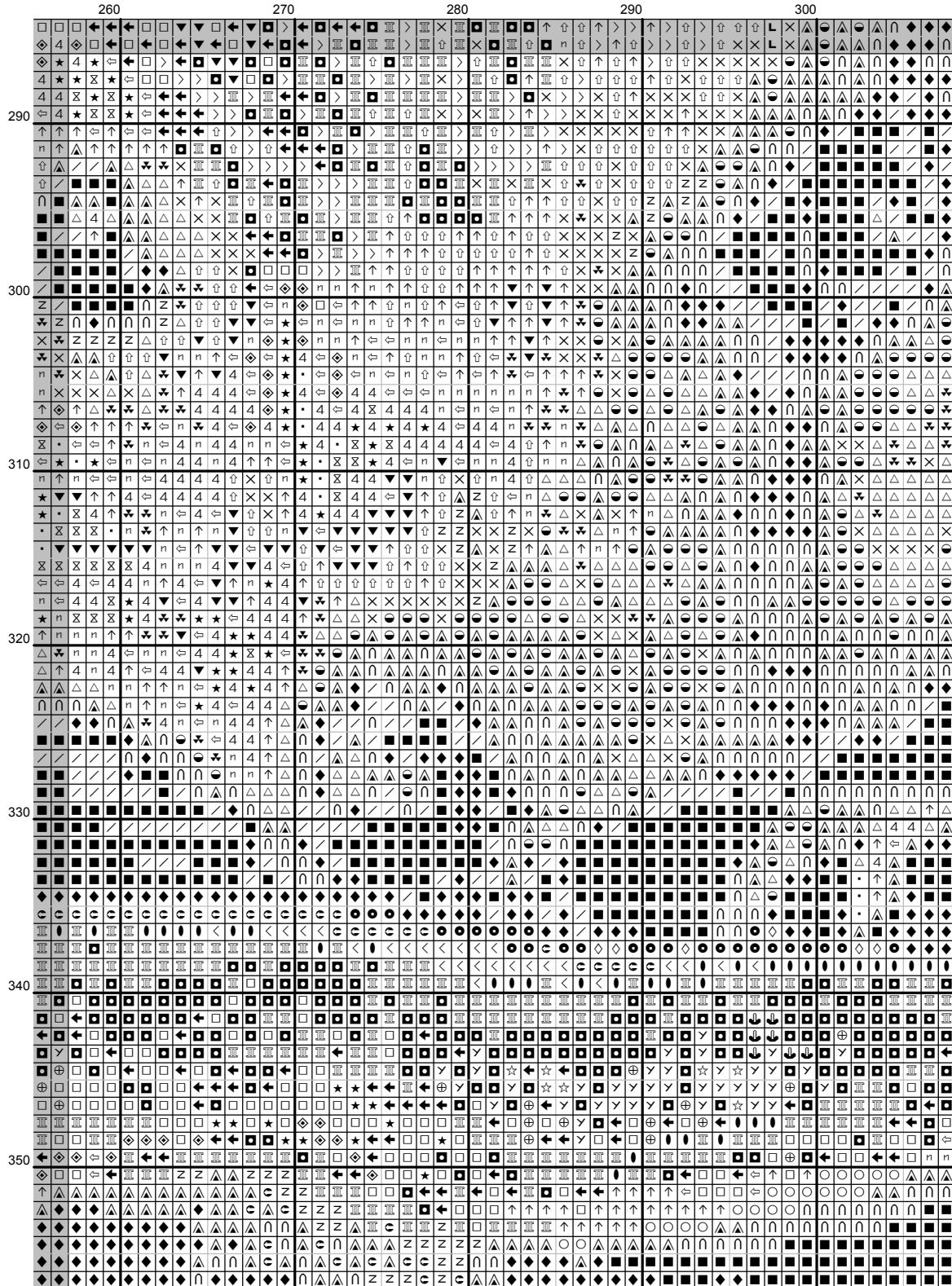


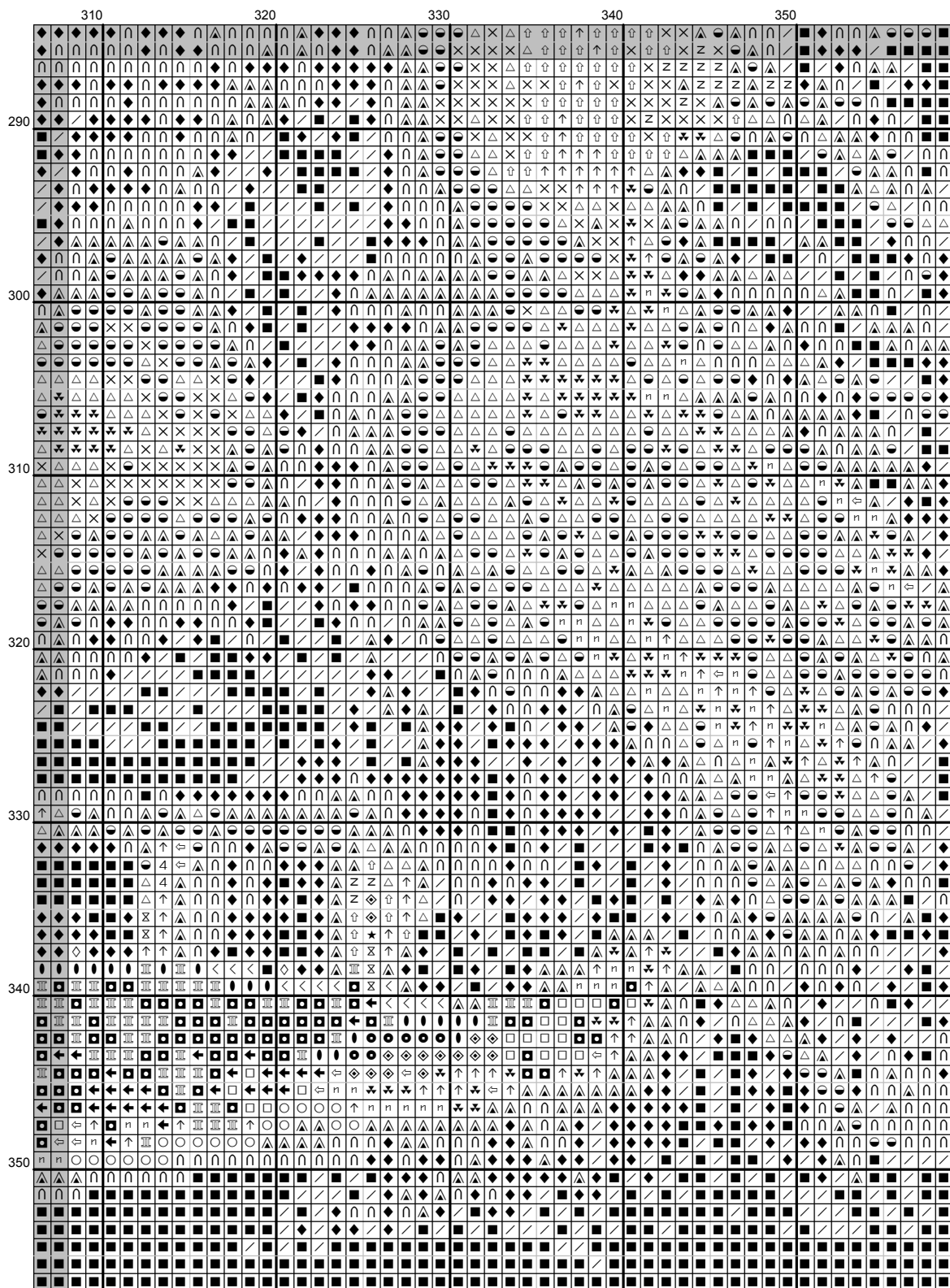












Осенний натюрморт

Канва 18 count Aida

Крестики 360 x 358 **Size:** 20.00 x 19.89 inches or 50.80 x 50.52 cm

Цвет DMC

Sym	No.	ColourName	Sym	No.	ColourName
■	3371	Ebony	/	938	Espresso brown
●	3345	Dark Hunter Green	↙	904	Avocado green
	905	Parrot green	▲	938+300	
◆	898	Teak brown	◇	300	Mahogany
∅	400	Brown	∩	839	Root brown
⊖	434	Cigar brown	△	839+840	
⊙	640	Green grey	☞	3790	Cappuccino brown
L	642+640		♡	906	Apple green
♥	907+906		☒	907	Granny Smith green
×	420+642		△	642	Earth grey
z	919	Red copper	//	349	Chilli red
↑	920	Ochre copper	<	435+434	
○	420	Hazelnut		920+720	
⊕	680	Dark old gold	z	840	Hare brown
●	435	Tabacco brown	III	436	Teddy brown
↑	841	Deer brown	-	720	Rust
⦿	721	Papaya orange	↓	783	Old gold
	721+741		■	437+436	
←	437	Camel	↑	3782	Gingerbread brown
□	738	Sahara cream	⊕	166	Moss green
⌒	3819	Light moss green	⚡	3032	Dark antique silver
n	3782+64		⊖	3820	Maze yellow
	4				
☆	742+741		⊗	742	Light tangerine
∨	728	Hops yellow	⊕	3822	Light straw yellow
◇	739+738		⊗	744	Grapefruit yellow
↔	644	Light green grey	4	3033	Antique silver
▼	842	Beige rope	★	739	Dune cream
.	712+739		⊗	712	Cream
~	3865	Winter white	z	905	Parrot green
●	433	Chocolate brown	I	741	Tangerine orange
>	3864	Light mocha brown	∅	783+680	

This chart has been designed and printed with our best intentions of being without mistakes. However, the possibility of human error, printing mistakes or the variation of individual stitching does exist, and we regret that we cannot be responsible for this.

Note: The shaded blocks on the chart represent overlapping stitches.
 Produced using Cross Stitch Professional for Windows www.dpsoftware.co.uk
 Copyright © Инна Байденко 2018 All rights reserved.