

XUMEDA

Схема гра бумбаевна

H278 "Египетские май"

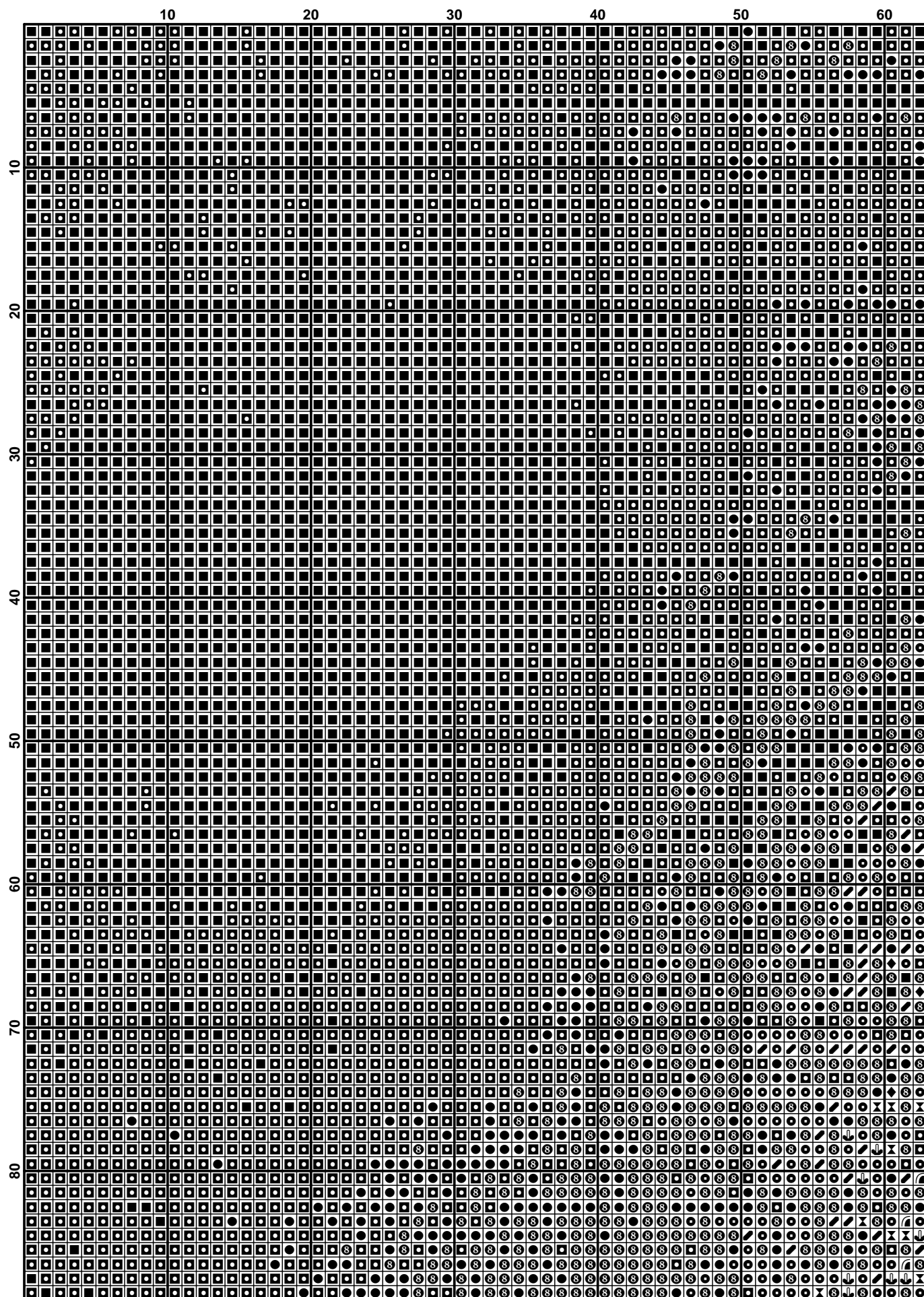
Finished Design Size 350w X 314h Stitches

2015 г.

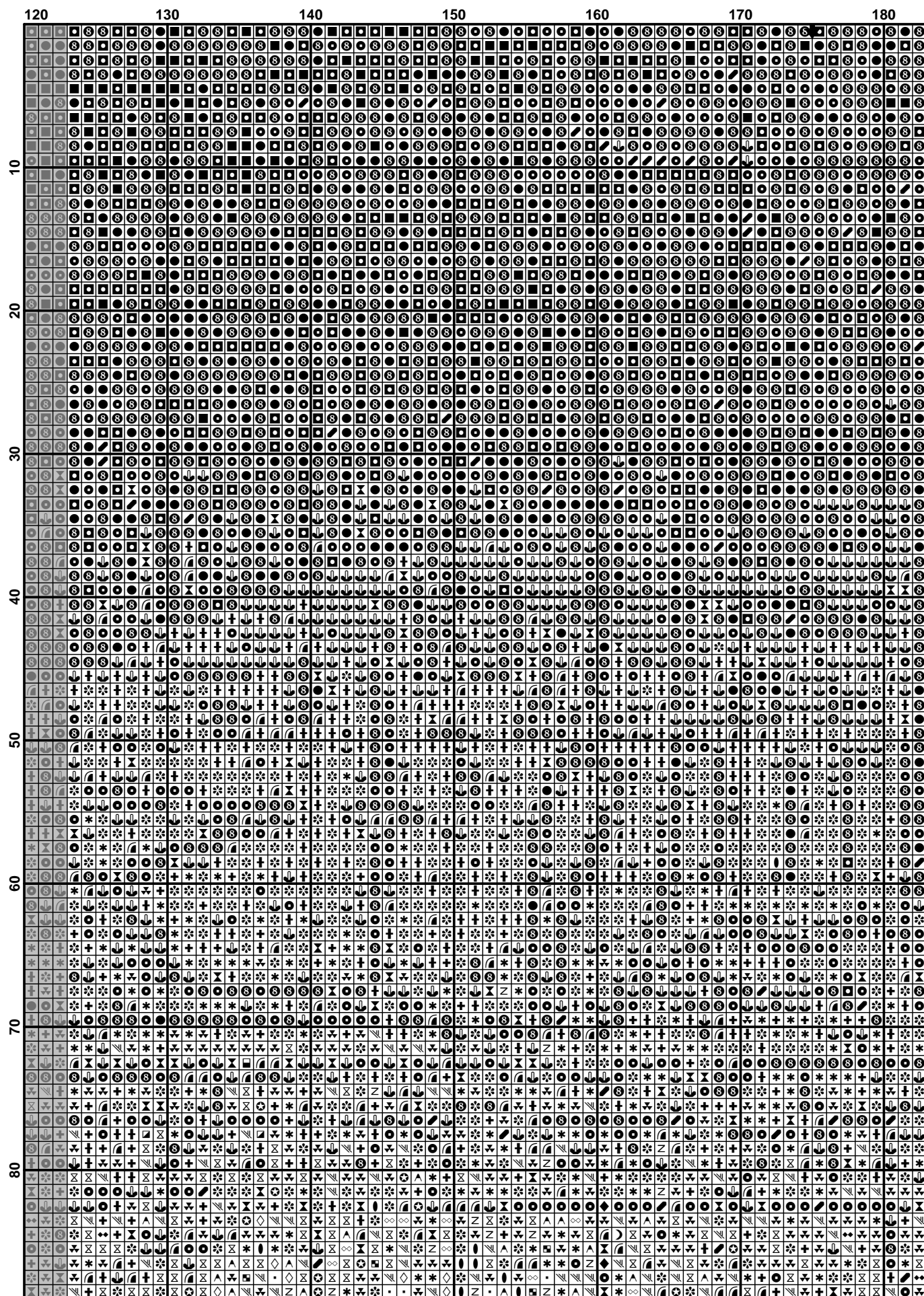


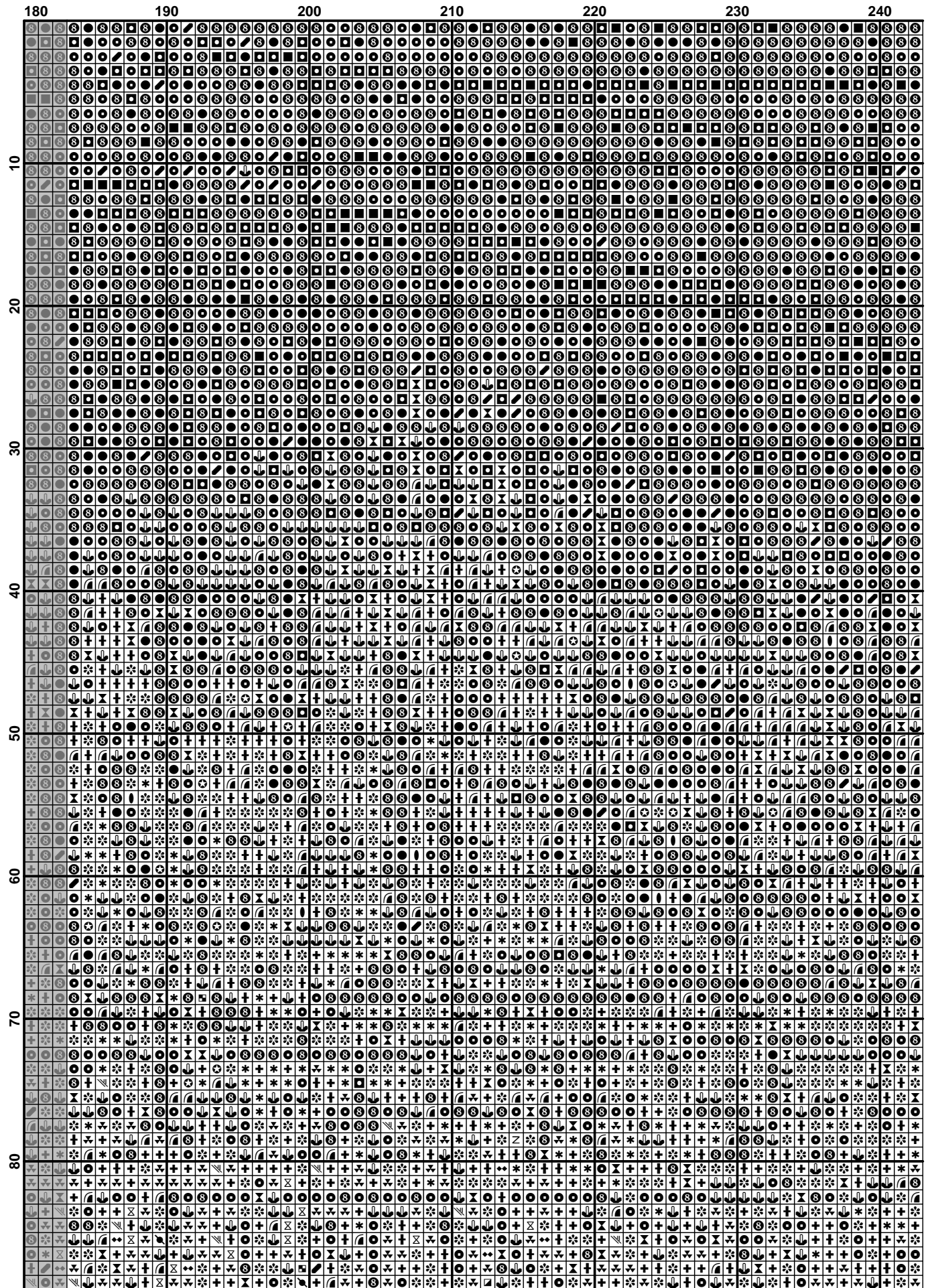
Каруселба улемоб:

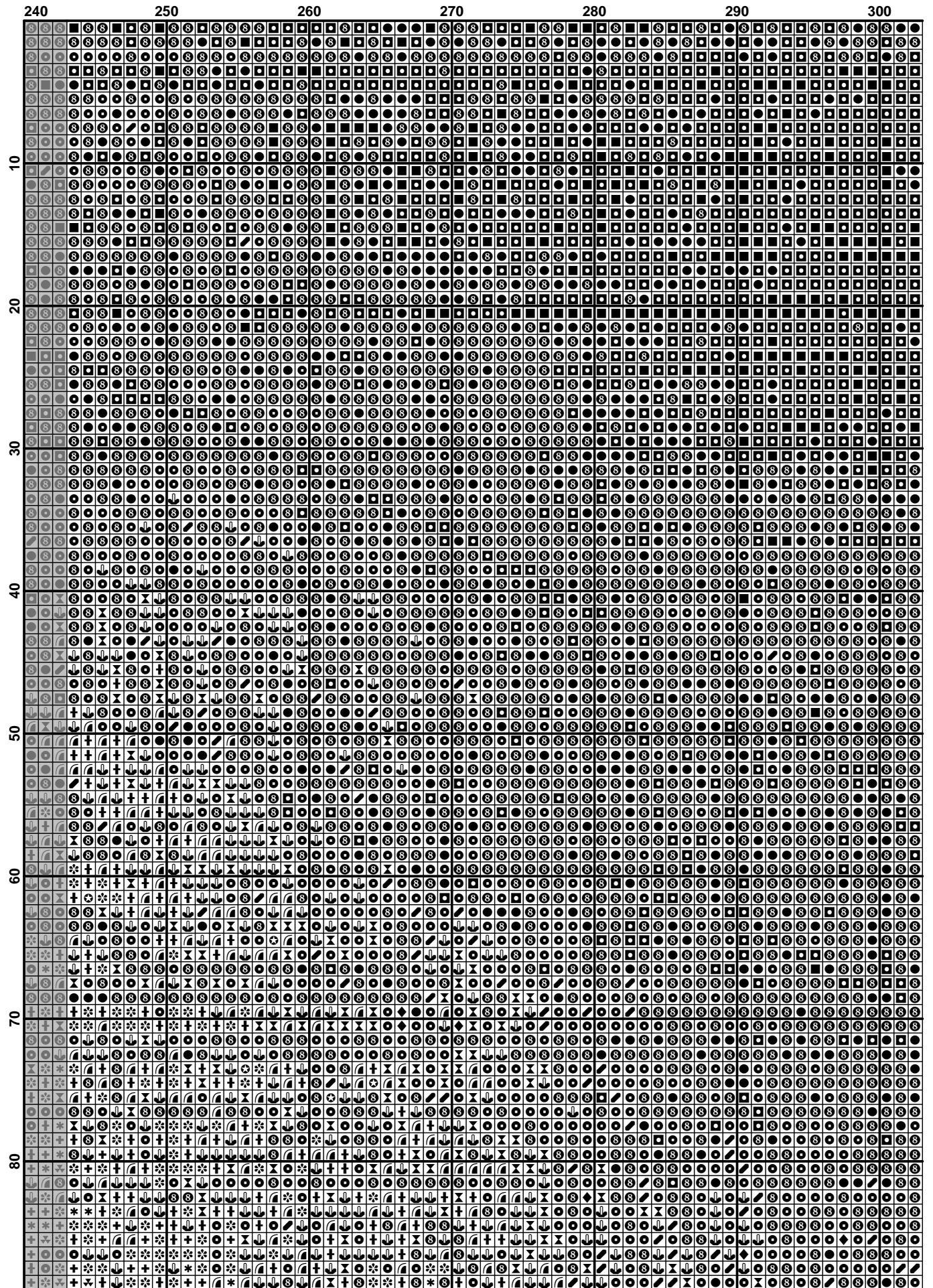
Чумбух: 54 улема

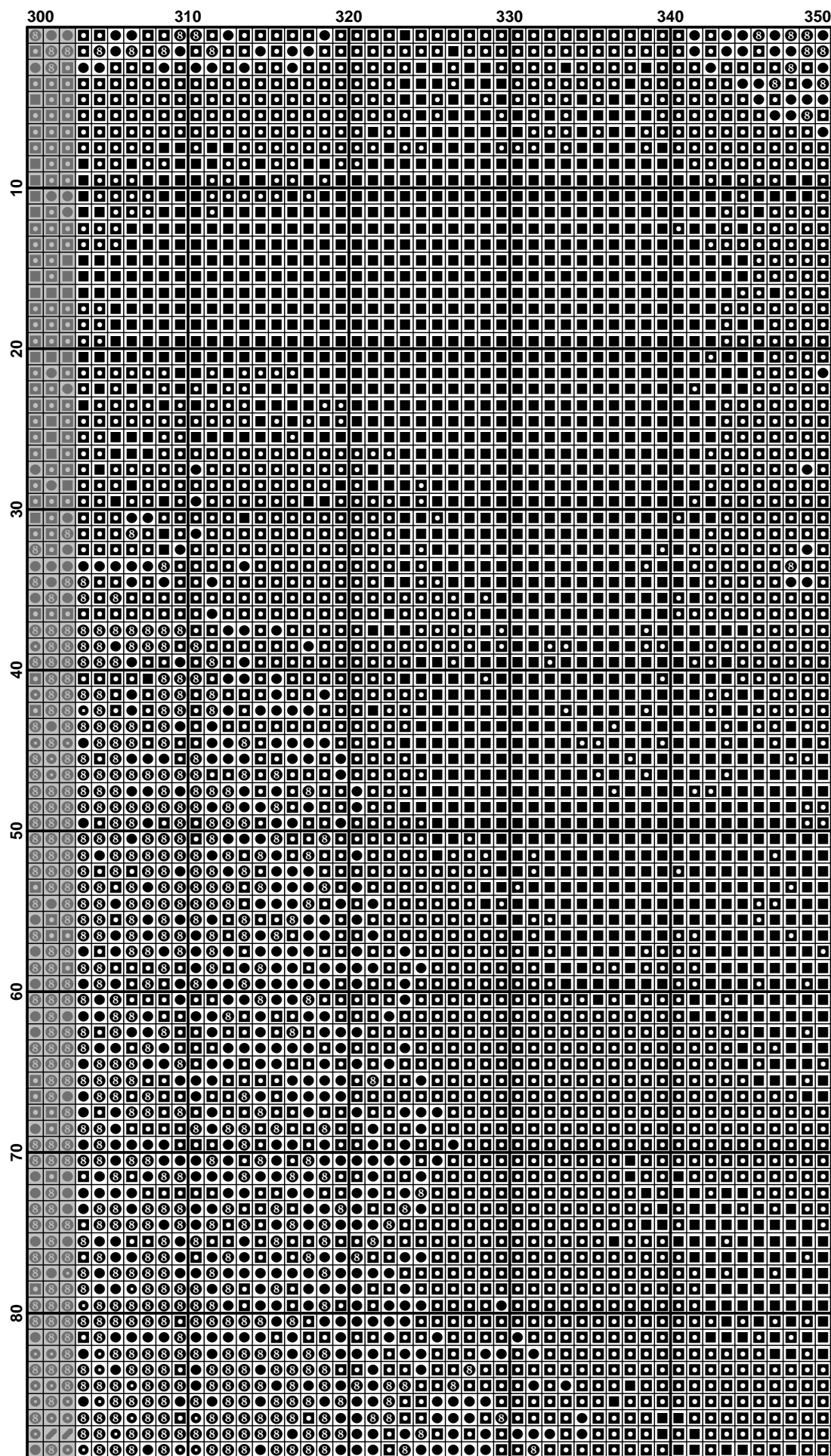






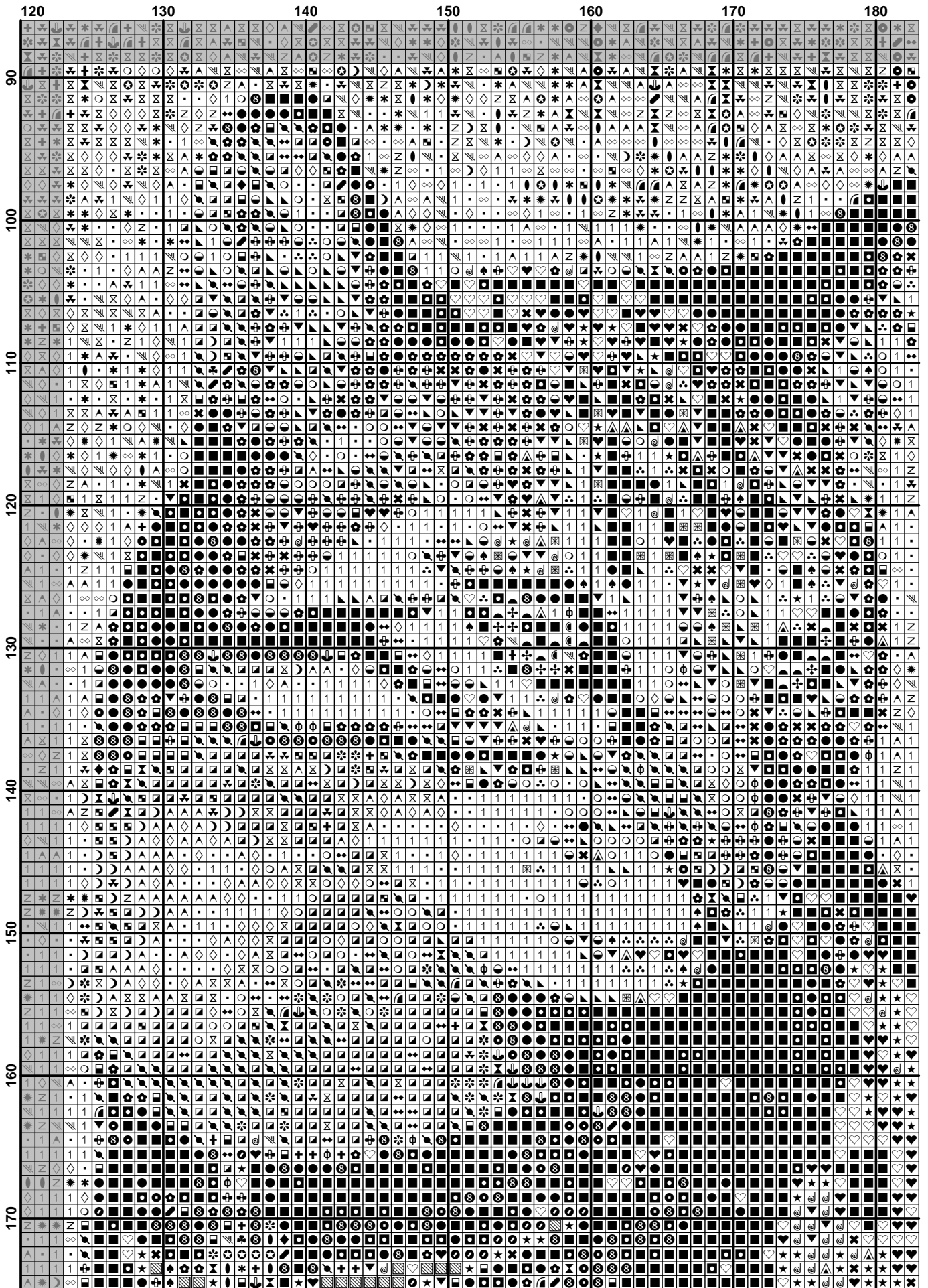


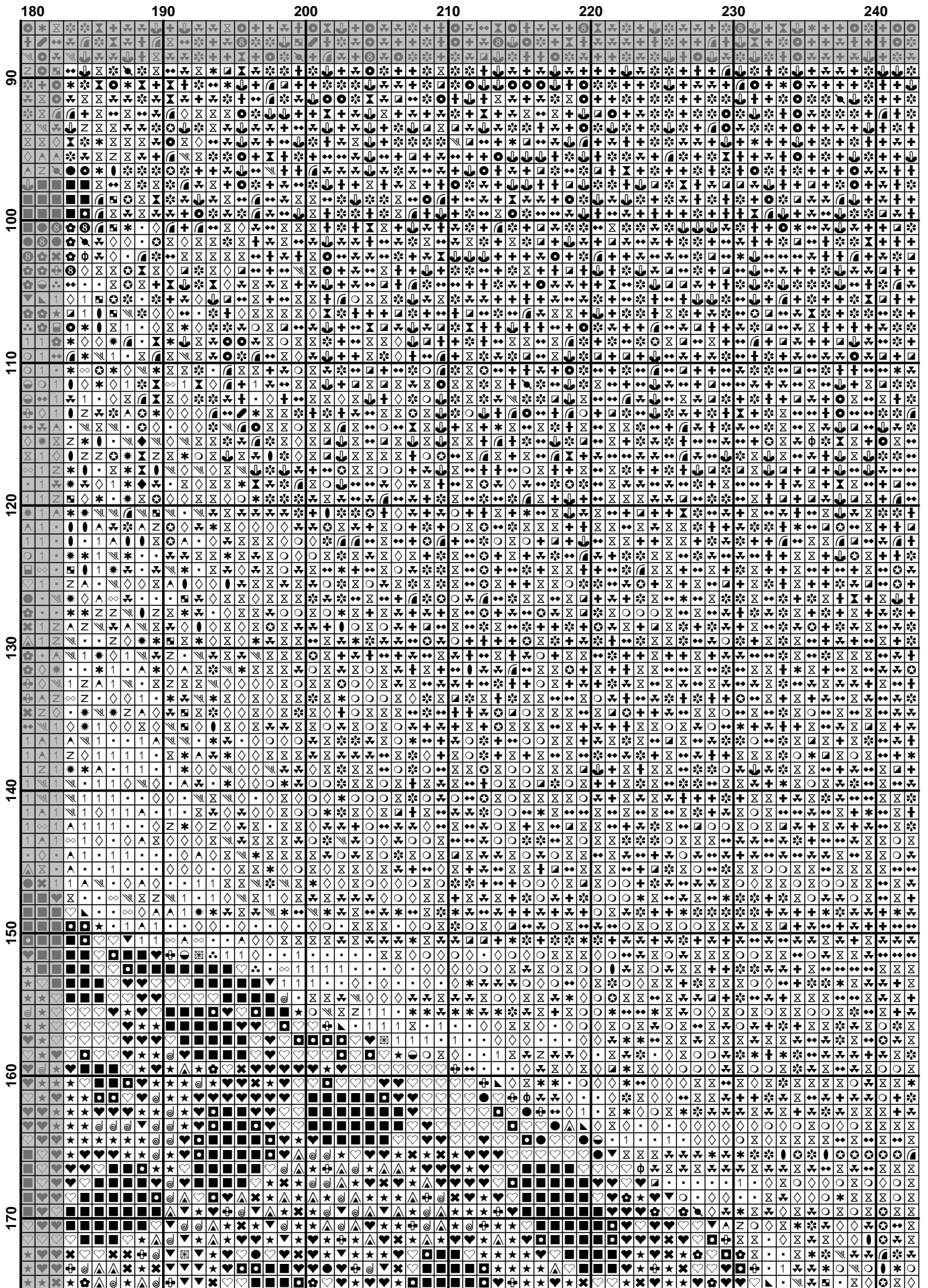


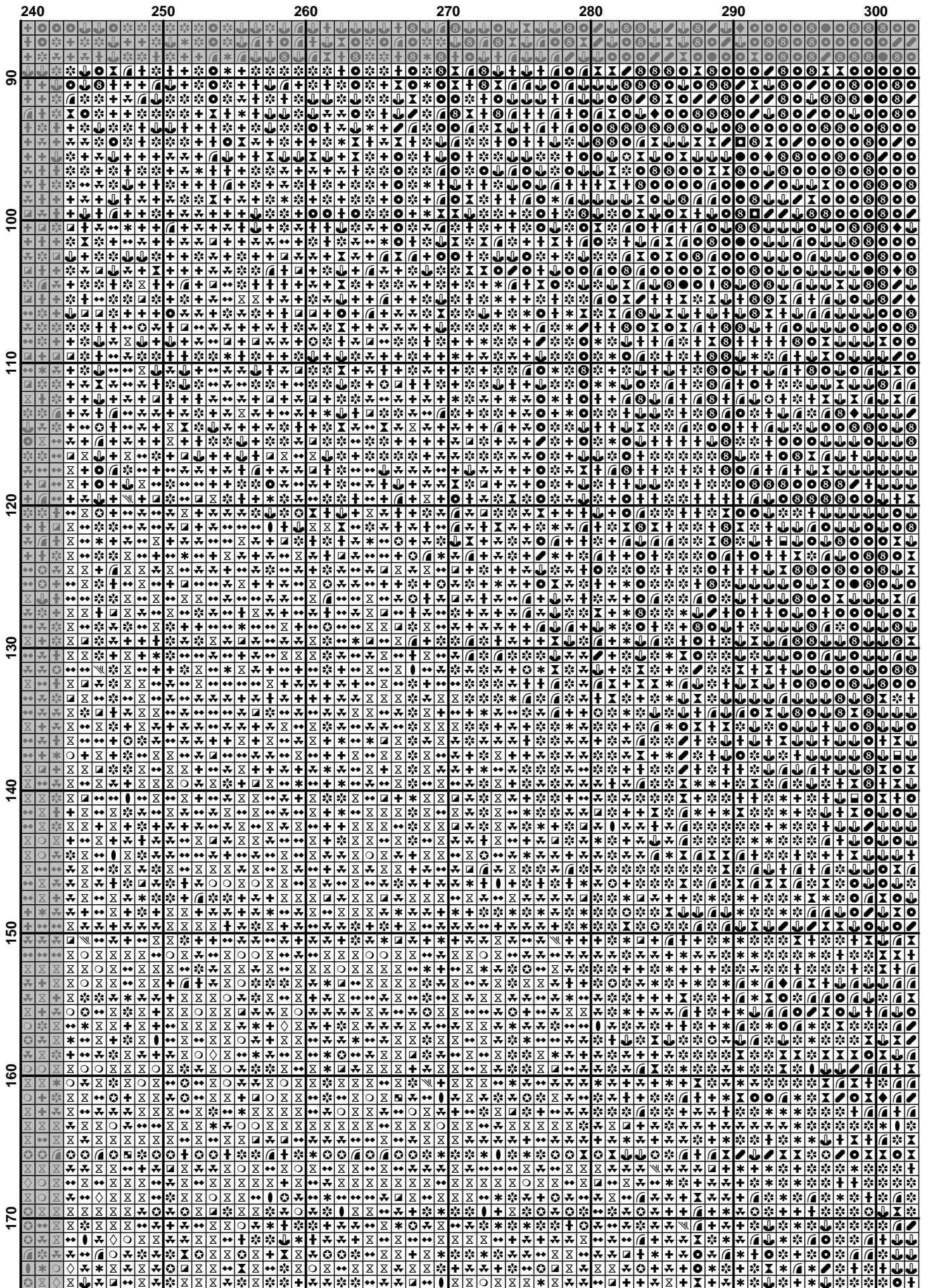


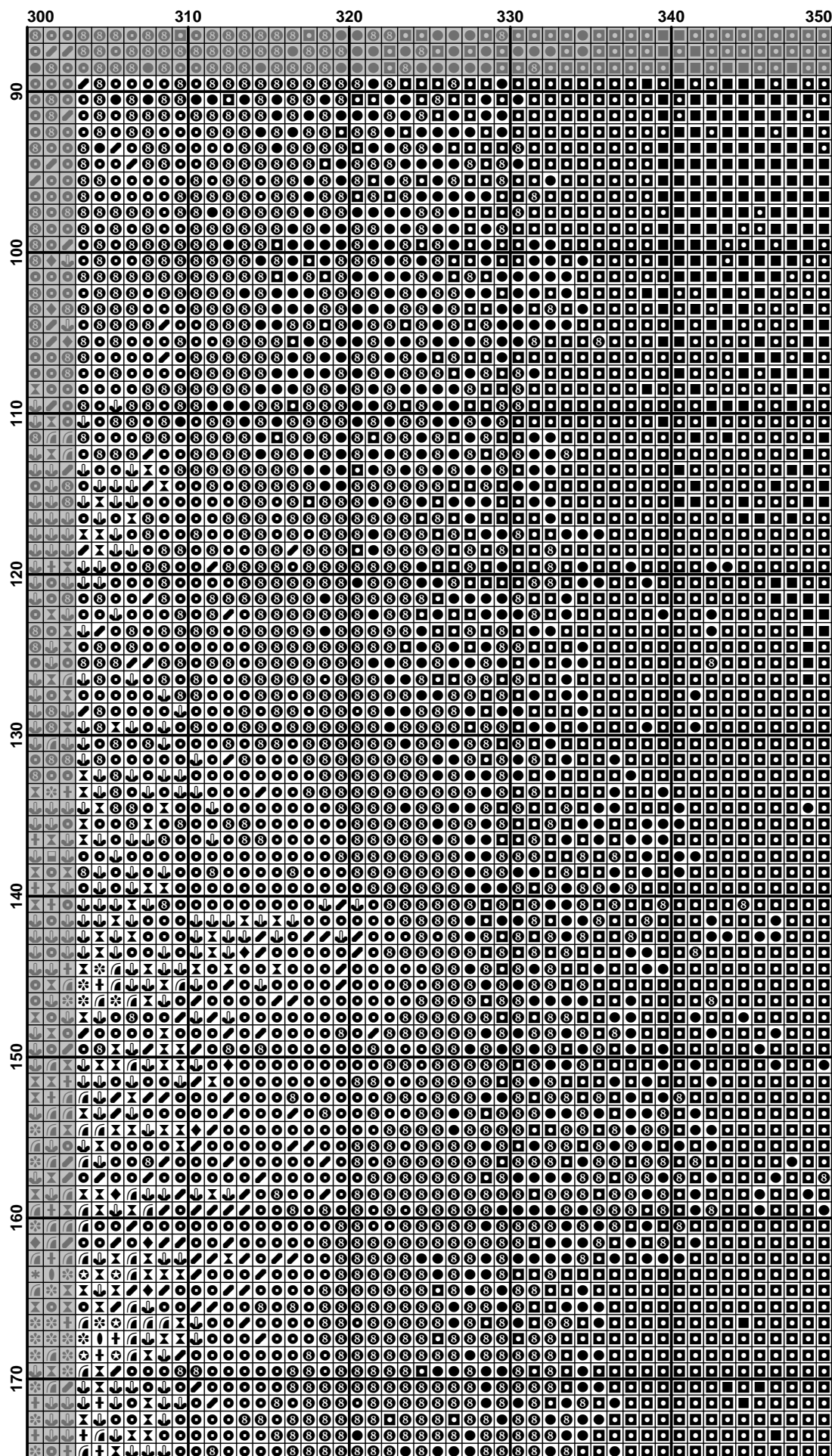
	10	20	30	40	50	60
90
100
110
120
130
140
150
160
170

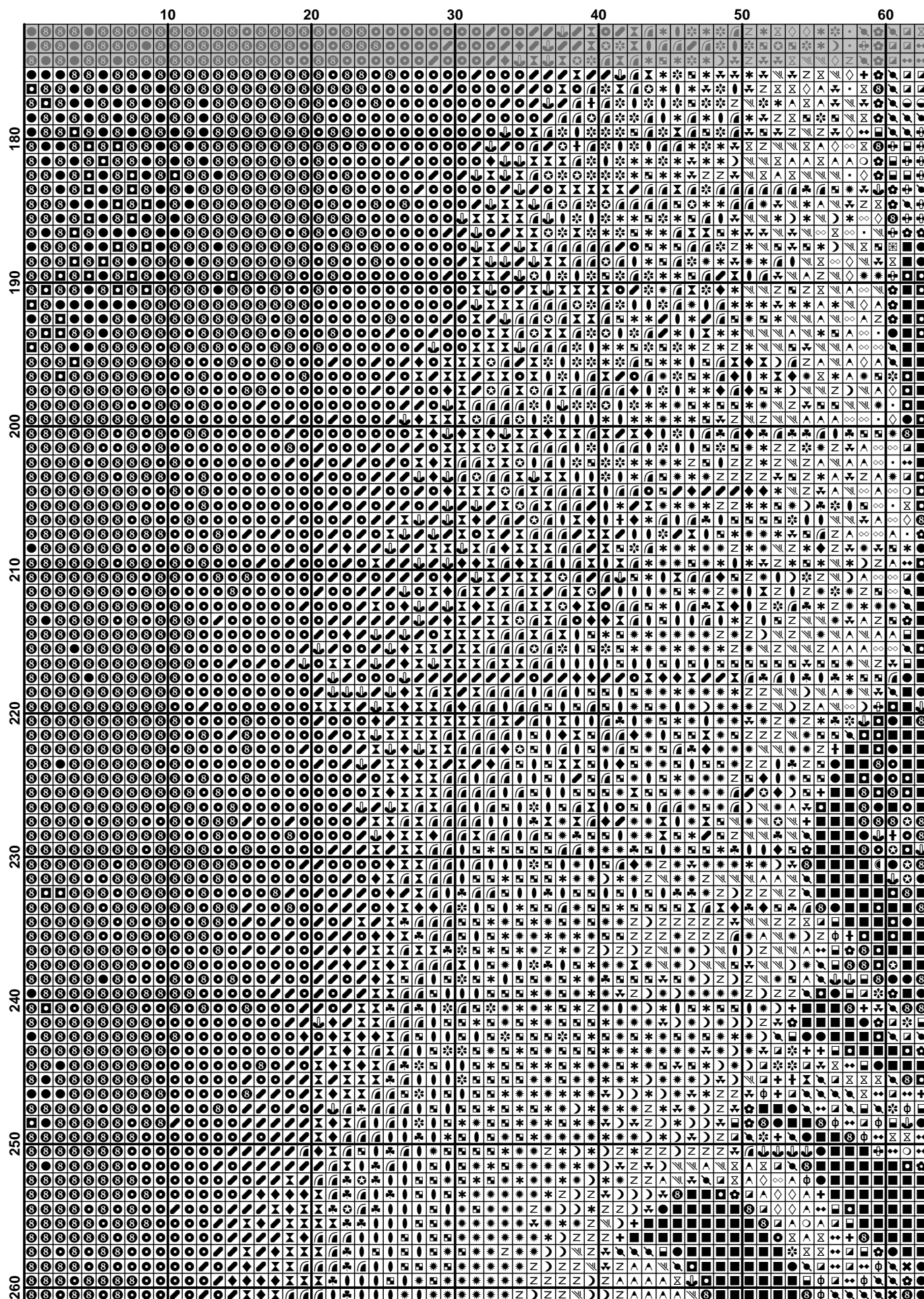
	60	70	80	90	100	110	120
90
100
110
120
130
140
150
160
170



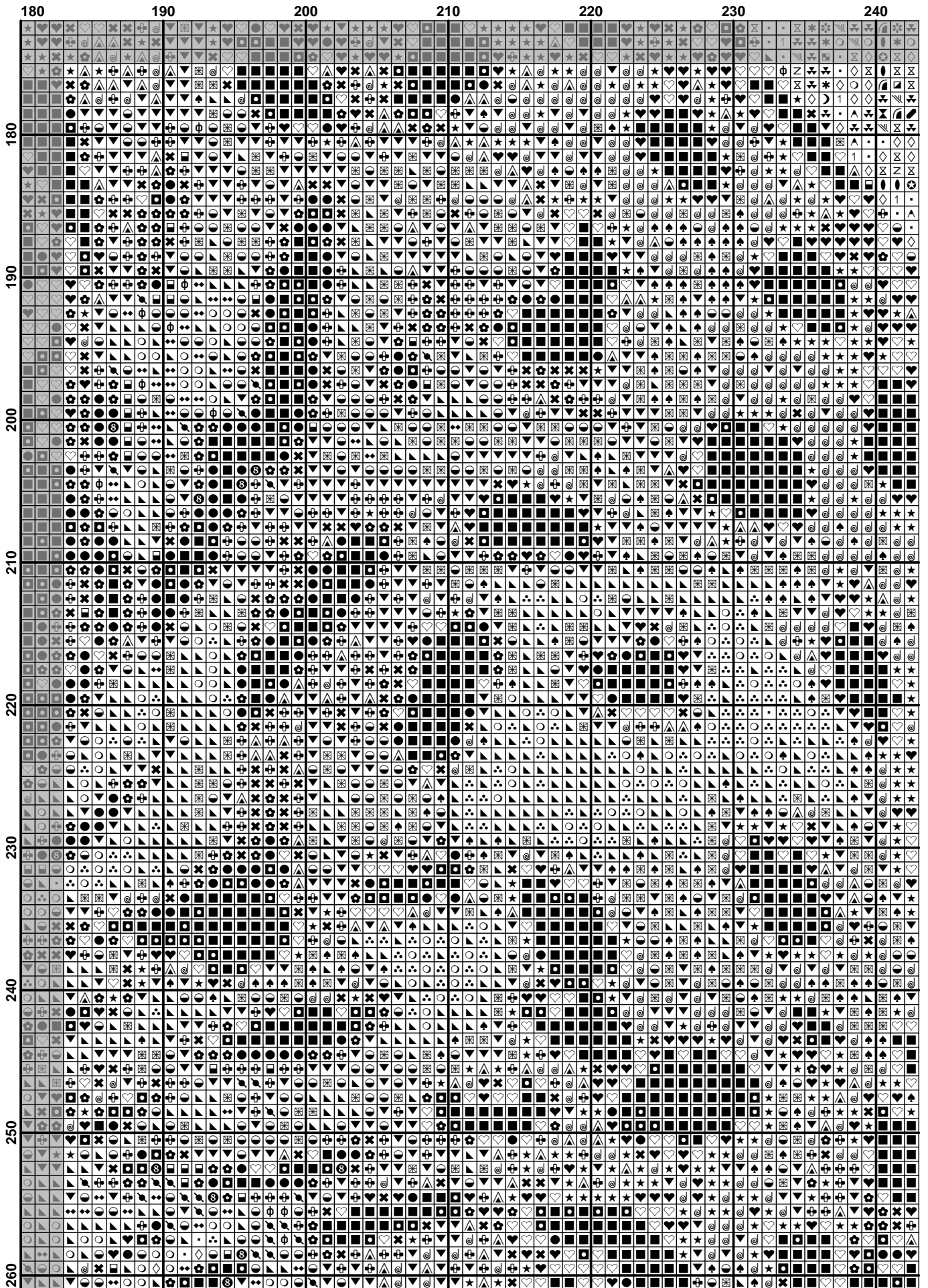




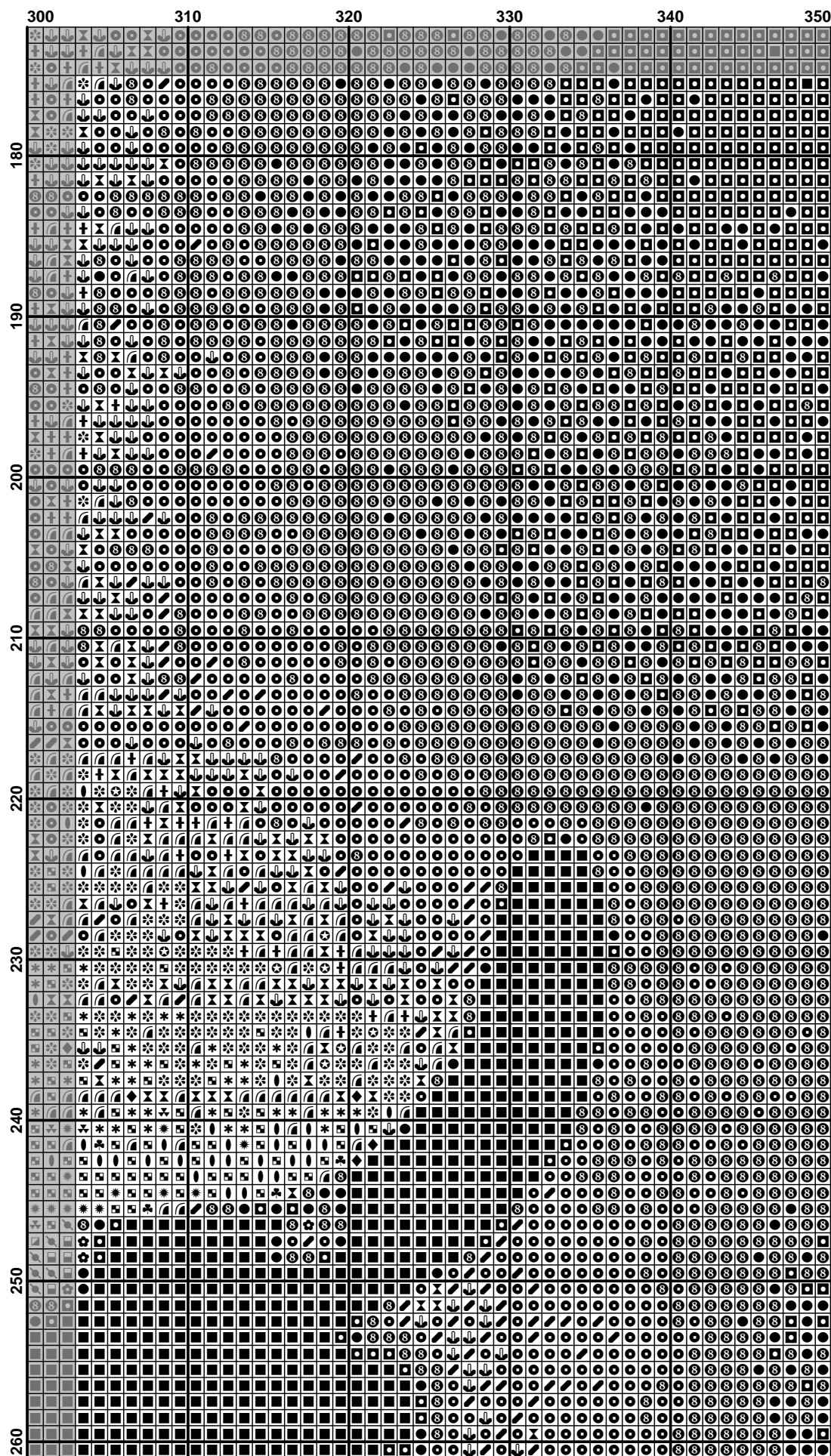


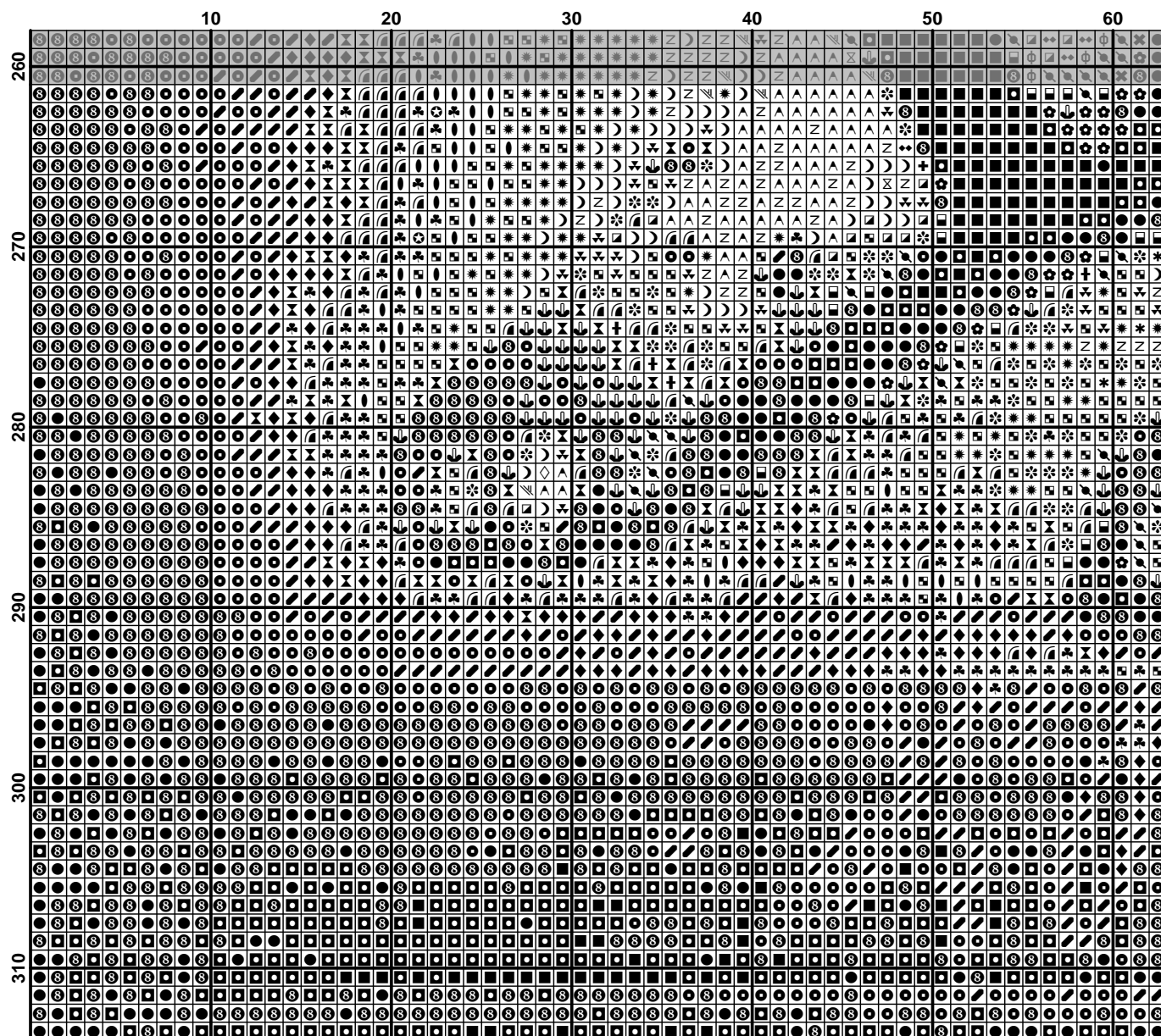


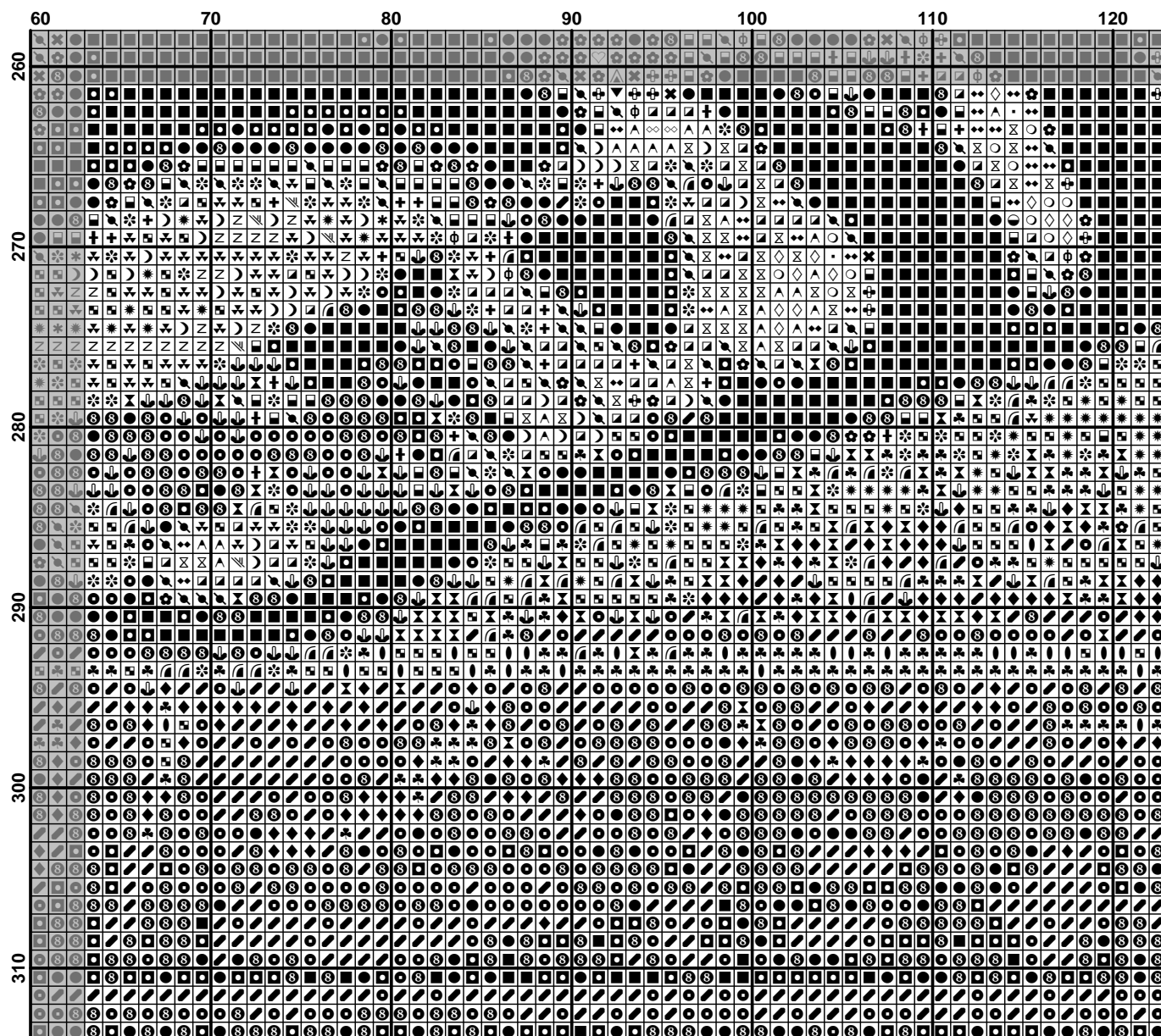
	120	130	140	150	160	170	180
180
190
200
210
220
230
240
250
260

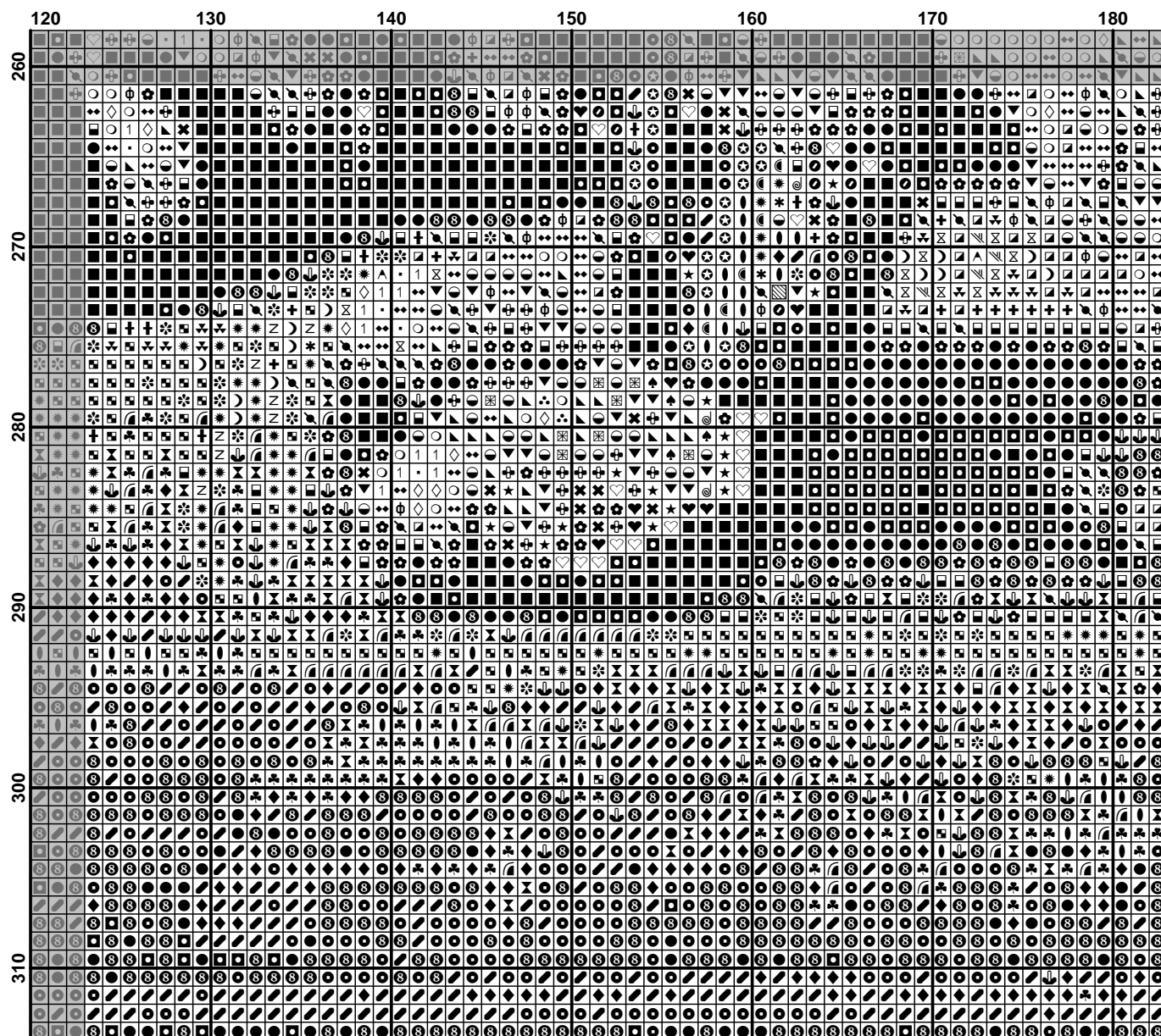


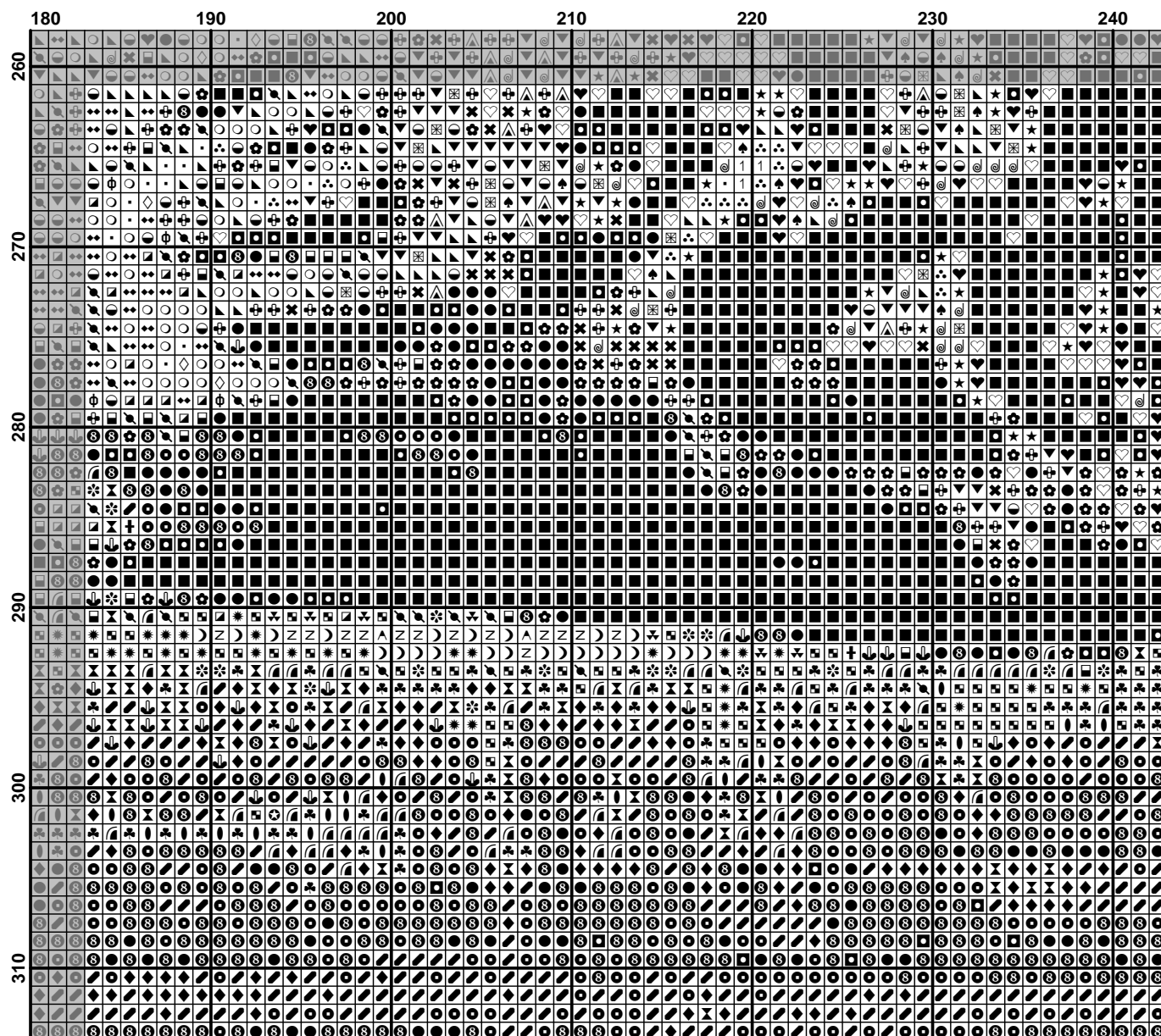
	240	250	260	270	280	290	300
180
190
200
210
220
230
240
250
260

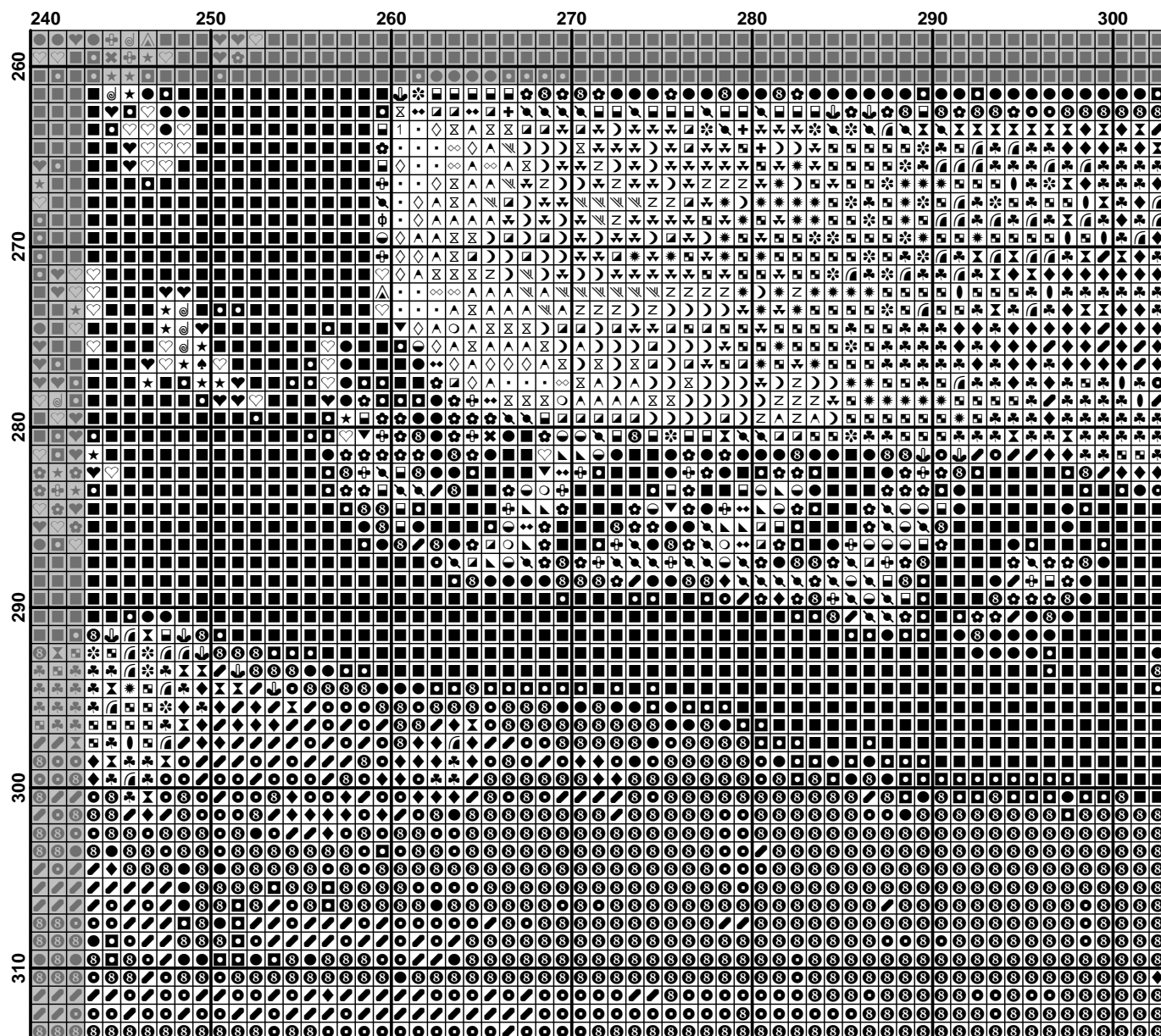


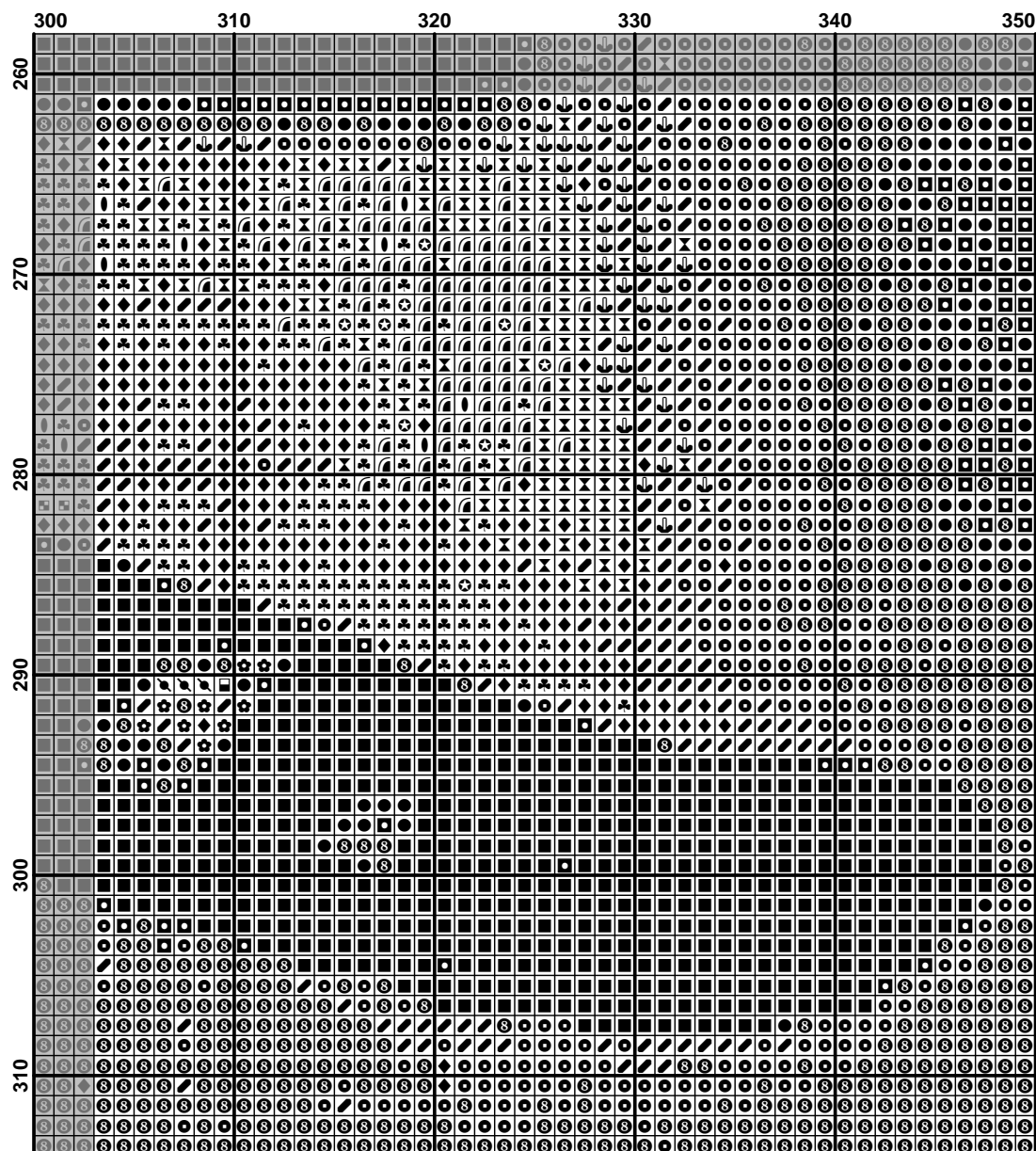

















Pattern Name: H278 "Египетские май"
Company: ХИМЕРА
Fabric: Aida 18, White
 350w X 314h Stitches
Size(s) : 18 Count, 49.39w X 44.31h cm
 16 Count, 55.56w X 49.85h cm
 14 Count, 63.50w X 56.97h cm
 25 Count, 35.56w X 31.90h cm

Floss Used for Full Stitches:

Symbol	Strands	Type	Number	Color
	2	DMC	166	Moss Green-MD LT
	2	DMC	300	Mahogany-VY DK
	2	DMC	301	Mahogany-MD
	2	DMC	310	Black
	2	DMC	317	Pewter Gray
	2	DMC	318	Steel Gray-LT
	2	DMC	400	Mahogany-DK
	2	DMC	402	Mahogany-VY LT
	2	DMC	413	Pewter Gray-DK
	2	DMC	414	Steel Gray-DK
	2	DMC	415	Pearl Gray
	2	DMC	435	Brown-VY LT
	2	DMC	436	Tan
	2	DMC	451	Shell Gray-DK
	2	DMC	452	Shell Gray-MD
	2	DMC	518	Wedgewood-LT
	2	DMC	612	Drab Brown-LT
	2	DMC	645	Beaver Gray-VY DK
	2	DMC	647	Beaver Gray-MD
	2	DMC	676	Old Gold-LT
	2	DMC	729	Old Gold-MD
	2	DMC	738	Tan-VY LT
	2	DMC	739	Tan-UL VY LT
	2	DMC	745	Yellow-LT Pale
	2	DMC	779	Cocoa-DK
	2	DMC	780	Topaz-UL VY DK
	2	DMC	782	Topaz-DK
	2	DMC	842	Beige Brown-VY LT
	2	DMC	906	Parrot Green-MD
	2	DMC	907	Parrot Green-LT
	2	DMC	919	Red Copper
	2	DMC	920	Copper-MD
	2	DMC	921	Copper
	2	DMC	938	Coffee Brown-UL DK
	2	DMC	951	Tawny-LT
	2	DMC	976	Golden Brown-MD
	2	DMC	977	Golden Brown-LT
	2	DMC	3045	Yellow Beige-DK
	2	DMC	3064	Desert Sand
	2	DMC	3371	Black Brown
	2	DMC	3765	Peacock Blue-VY DK
	2	DMC	3770	Tawny-VY LT
	2	DMC	3772	Desert Sand-VY DK
	2	DMC	3776	Mahogany-LT
	2	DMC	3787	Brown Gray-DK
	2	DMC	3799	Pewter Gray-VY DK
	2	DMC	3826	Golden Brown
	2	DMC	3827	Golden Brown-Pale
	2	DMC	3829	Old Gold-VY DK

Symbol	Strands	Type	Number	Color
 ^	2	DMC	3856	Mahogany-UL VY LT
 ⊕	2	DMC	3860	Cocoa
 ⊖	2	DMC	3861	Cocoa-LT
 □	2	DMC	3862	Mocha Beige-DK
 ◆	2	DMC	3864	Mocha Beige-LT

Расход нитей

Нитей на моток: 6

Длина мотка: 795.0 cm

Type	Number	Full	Half	Quarter	Petite	Back(cm)	Str(cm)	Spec(cm)	French	Bead	Skein Est
DMC	166	29	0	0	0	0.0	0.0	0.0	0	0	1.000
DMC	300	16250	0	0	0	0.0	0.0	0.0	0	0	6.000
DMC	301	2444	0	0	0	0.0	0.0	0.0	0	0	1.000
DMC	310	12794	0	0	0	0.0	0.0	0.0	0	0	5.000
DMC	317	650	0	0	0	0.0	0.0	0.0	0	0	1.000
DMC	318	229	0	0	0	0.0	0.0	0.0	0	0	1.000
DMC	400	9571	0	0	0	0.0	0.0	0.0	0	0	4.000
DMC	402	493	0	0	0	0.0	0.0	0.0	0	0	1.000
DMC	413	662	0	0	0	0.0	0.0	0.0	0	0	1.000
DMC	414	578	0	0	0	0.0	0.0	0.0	0	0	1.000
DMC	415	212	0	0	0	0.0	0.0	0.0	0	0	1.000
DMC	435	4436	0	0	0	0.0	0.0	0.0	0	0	2.000
DMC	436	2874	0	0	0	0.0	0.0	0.0	0	0	1.000
DMC	451	1026	0	0	0	0.0	0.0	0.0	0	0	1.000
DMC	452	927	0	0	0	0.0	0.0	0.0	0	0	1.000
DMC	518	20	0	0	0	0.0	0.0	0.0	0	0	1.000
DMC	612	242	0	0	0	0.0	0.0	0.0	0	0	1.000
DMC	645	226	0	0	0	0.0	0.0	0.0	0	0	1.000
DMC	647	502	0	0	0	0.0	0.0	0.0	0	0	1.000
DMC	676	815	0	0	0	0.0	0.0	0.0	0	0	1.000
DMC	729	1503	0	0	0	0.0	0.0	0.0	0	0	1.000
DMC	738	2791	0	0	0	0.0	0.0	0.0	0	0	1.000
DMC	739	1284	0	0	0	0.0	0.0	0.0	0	0	1.000
DMC	745	389	0	0	0	0.0	0.0	0.0	0	0	1.000
DMC	779	1360	0	0	0	0.0	0.0	0.0	0	0	1.000
DMC	780	3584	0	0	0	0.0	0.0	0.0	0	0	2.000
DMC	782	506	0	0	0	0.0	0.0	0.0	0	0	1.000
DMC	842	1129	0	0	0	0.0	0.0	0.0	0	0	1.000
DMC	906	24	0	0	0	0.0	0.0	0.0	0	0	1.000
DMC	907	15	0	0	0	0.0	0.0	0.0	0	0	1.000
DMC	919	2466	0	0	0	0.0	0.0	0.0	0	0	1.000
DMC	920	1068	0	0	0	0.0	0.0	0.0	0	0	1.000
DMC	921	820	0	0	0	0.0	0.0	0.0	0	0	1.000
DMC	938	6217	0	0	0	0.0	0.0	0.0	0	0	3.000
DMC	951	1118	0	0	0	0.0	0.0	0.0	0	0	1.000
DMC	976	750	0	0	0	0.0	0.0	0.0	0	0	1.000
DMC	977	824	0	0	0	0.0	0.0	0.0	0	0	1.000
DMC	3045	1682	0	0	0	0.0	0.0	0.0	0	0	1.000
DMC	3064	1090	0	0	0	0.0	0.0	0.0	0	0	1.000
DMC	3371	11291	0	0	0	0.0	0.0	0.0	0	0	4.000
DMC	3765	22	0	0	0	0.0	0.0	0.0	0	0	1.000
DMC	3770	1113	0	0	0	0.0	0.0	0.0	0	0	1.000
DMC	3772	932	0	0	0	0.0	0.0	0.0	0	0	1.000
DMC	3776	1295	0	0	0	0.0	0.0	0.0	0	0	1.000
DMC	3787	446	0	0	0	0.0	0.0	0.0	0	0	1.000
DMC	3799	919	0	0	0	0.0	0.0	0.0	0	0	1.000
DMC	3826	2461	0	0	0	0.0	0.0	0.0	0	0	1.000
DMC	3827	597	0	0	0	0.0	0.0	0.0	0	0	1.000
DMC	3829	1824	0	0	0	0.0	0.0	0.0	0	0	1.000
DMC	3856	964	0	0	0	0.0	0.0	0.0	0	0	1.000
DMC	3860	1014	0	0	0	0.0	0.0	0.0	0	0	1.000
DMC	3861	867	0	0	0	0.0	0.0	0.0	0	0	1.000
DMC	3862	862	0	0	0	0.0	0.0	0.0	0	0	1.000
DMC	3864	1693	0	0	0	0.0	0.0	0.0	0	0	1.000

ХИМЕРА

