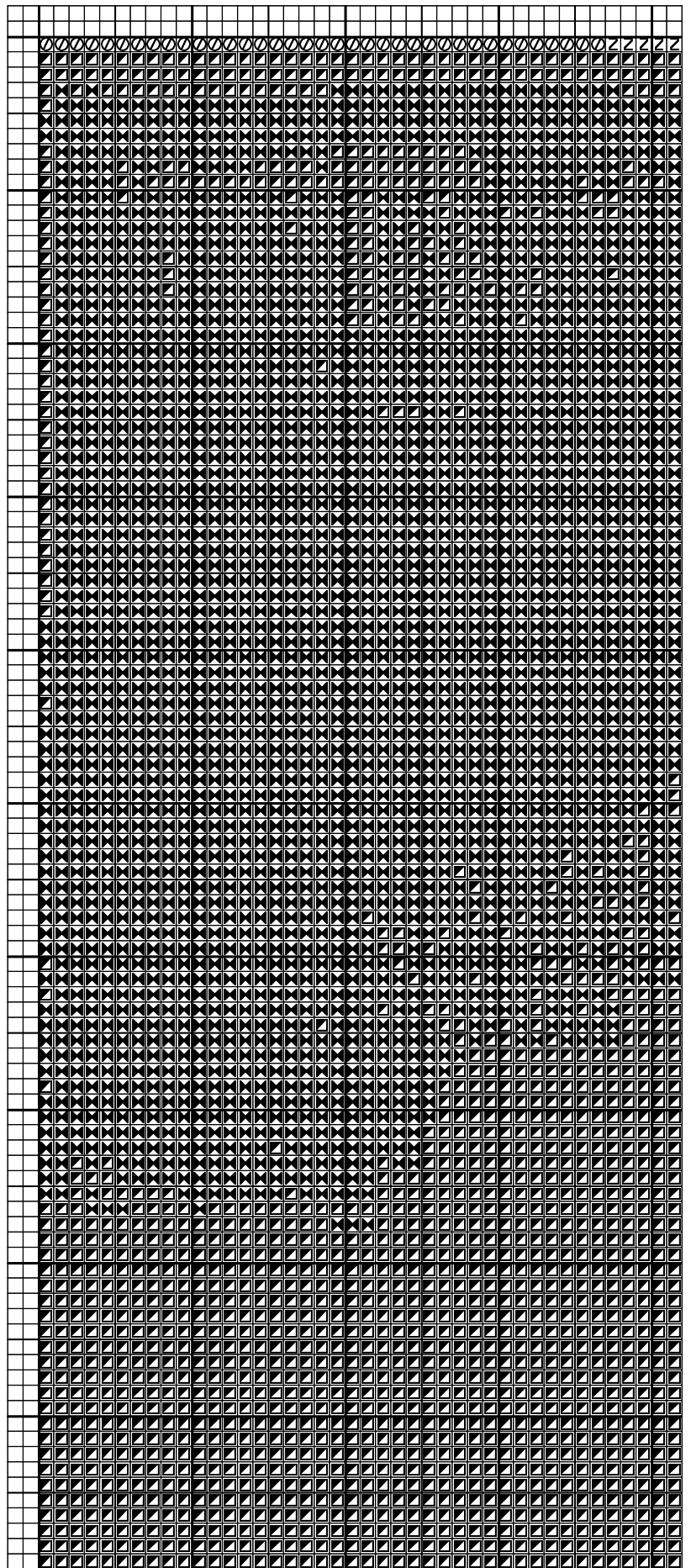
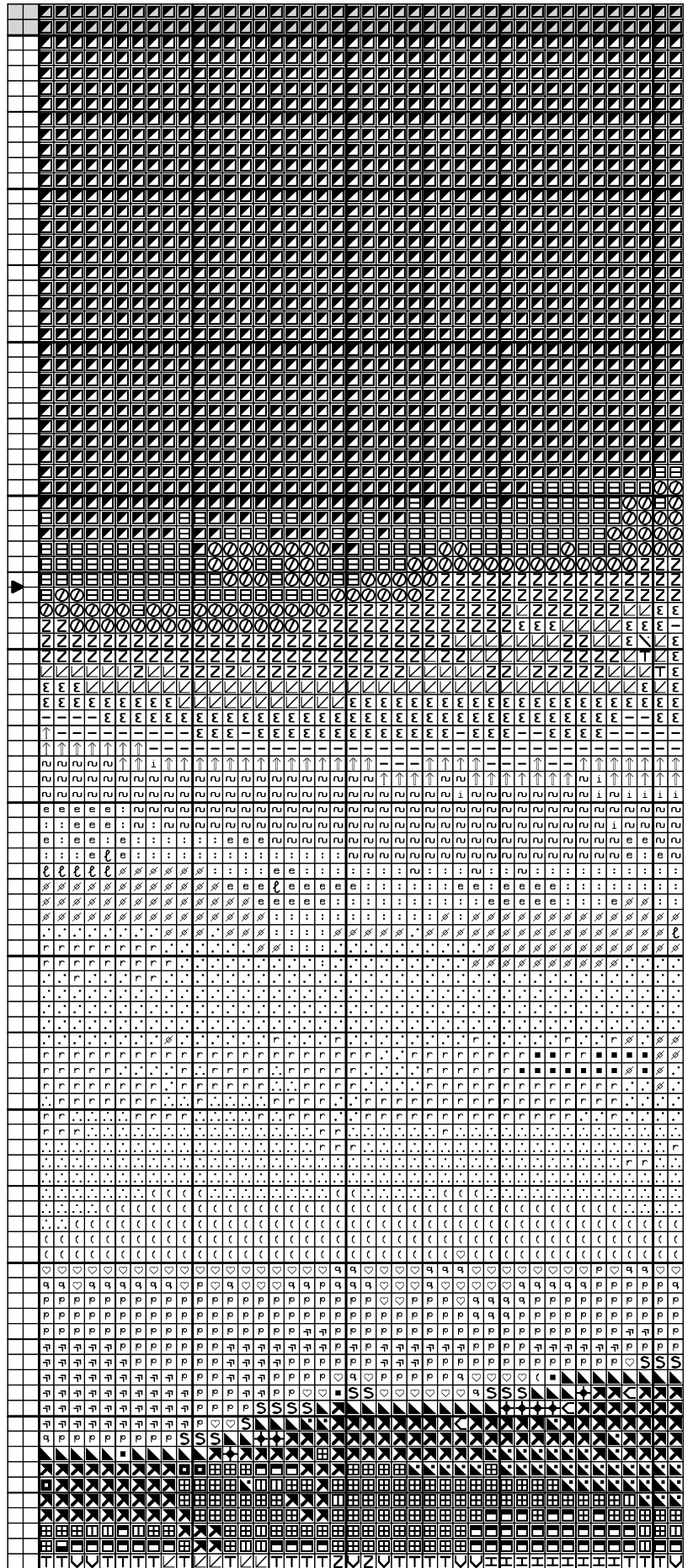
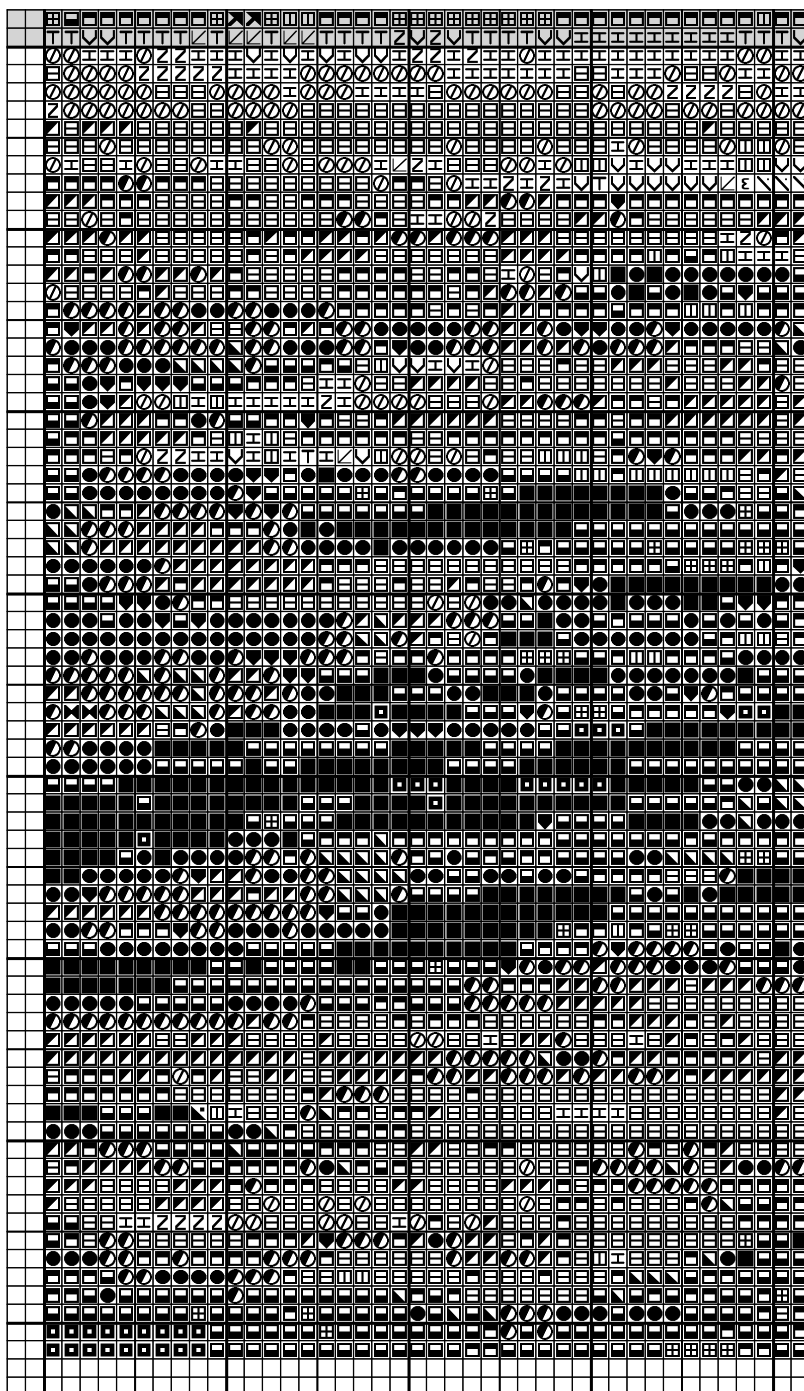


Veliero

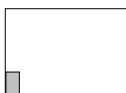




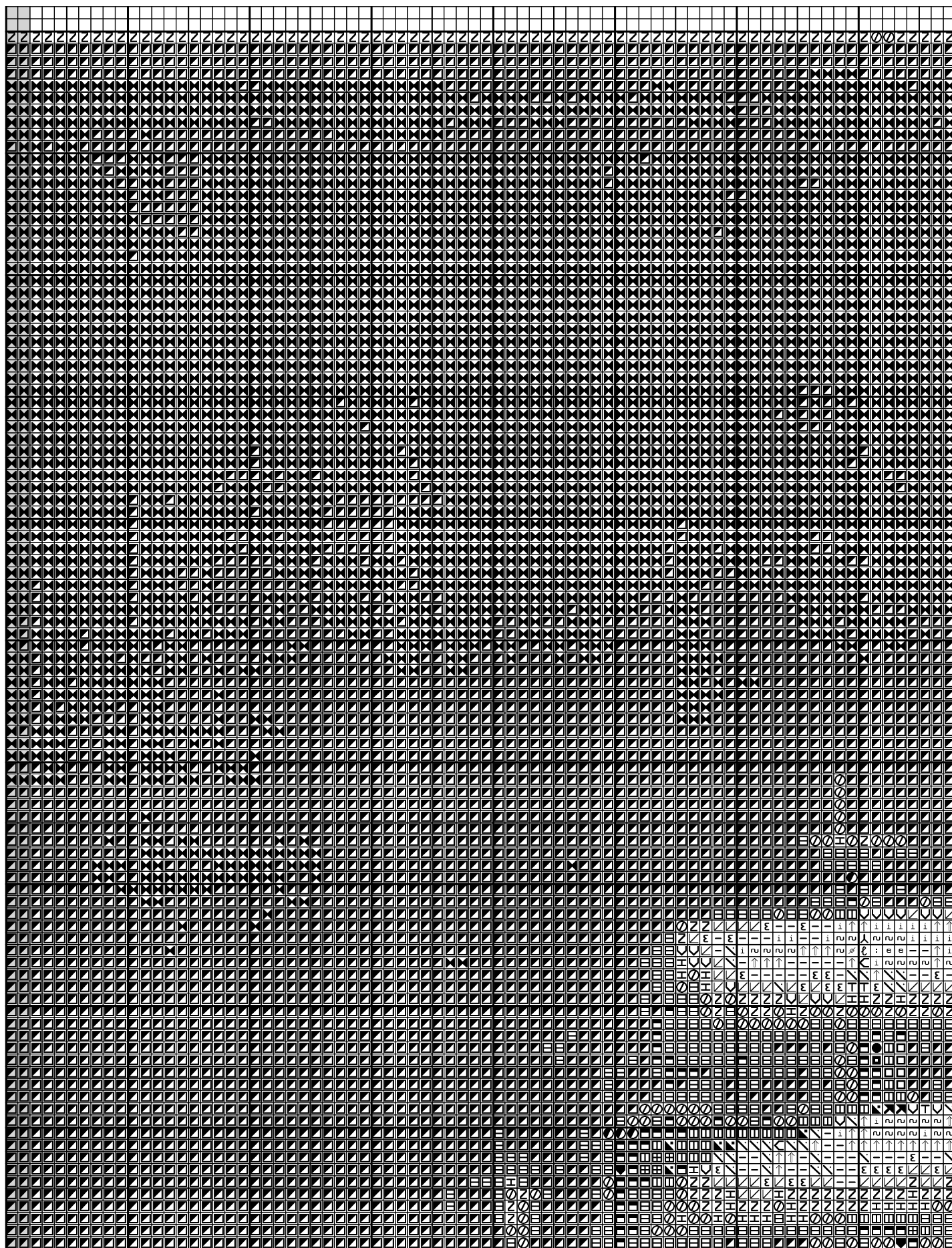
# Veliero



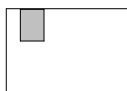
Copyright © Schema dal Sito [www.laura-stitch.it](http://www.laura-stitch.it)



# Veliero



Copyright © Schema dal Sito [www.laura-stitch.it](http://www.laura-stitch.it)

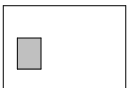




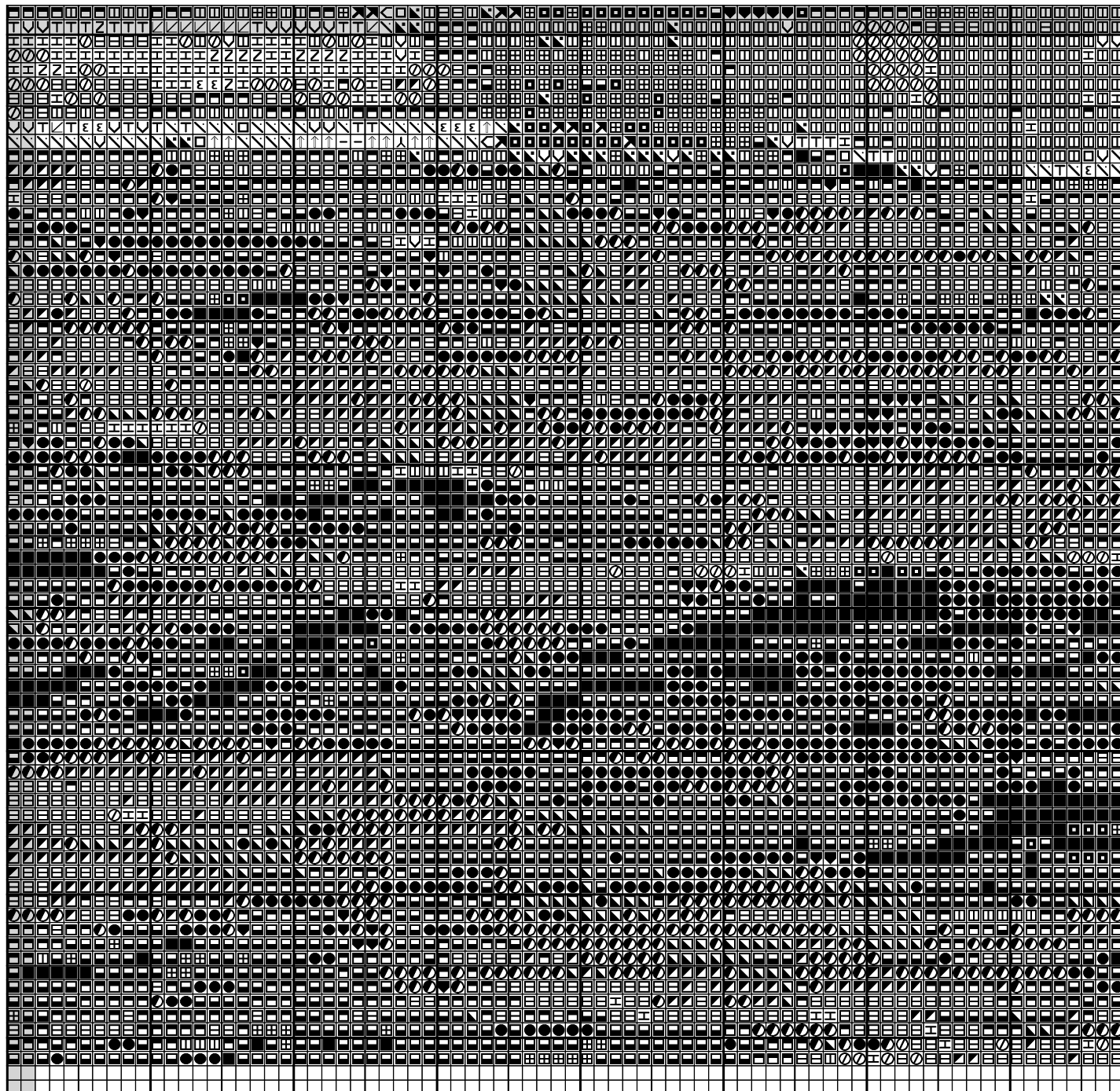
# Veliero



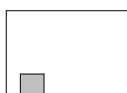
Copyright © Schema dal Sito [www.laura-stitch.it](http://www.laura-stitch.it)



# Veliero

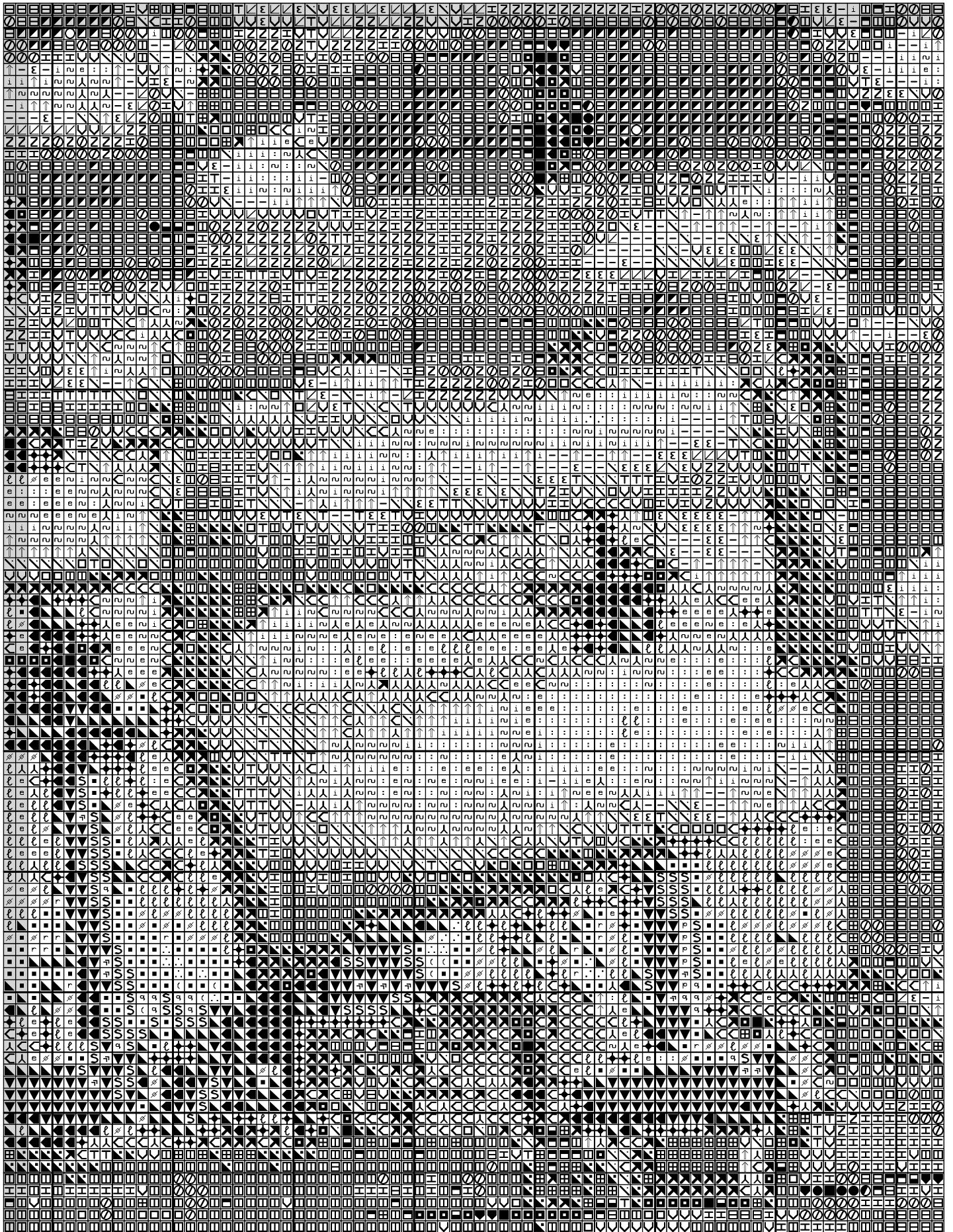


Copyright © Schema dal Sito [www.laura-stitch.it](http://www.laura-stitch.it)





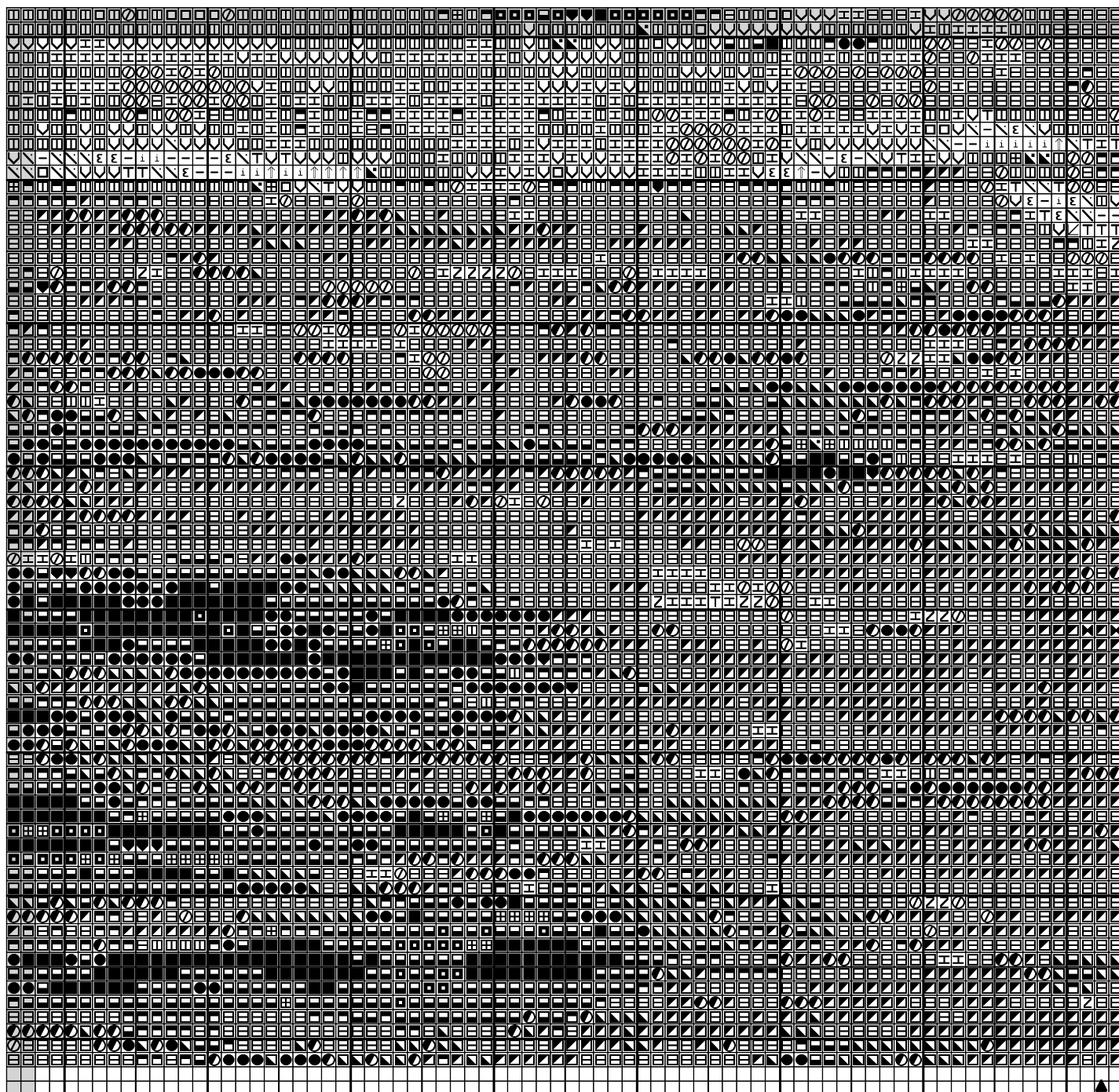
# Veliero



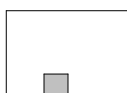
Copyright © Schema dal Sito [www.laura-stitch.it](http://www.laura-stitch.it)



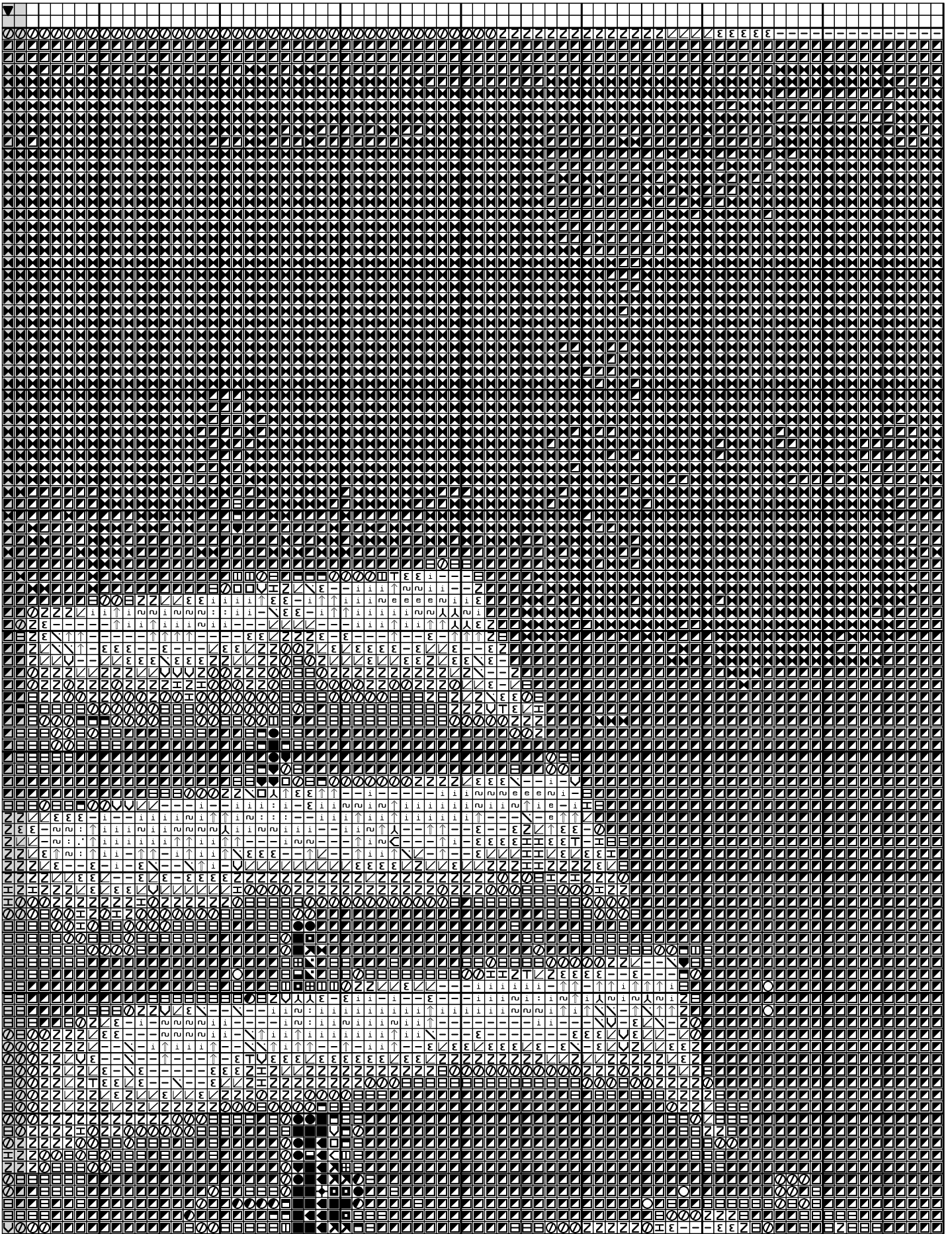
# Veliero



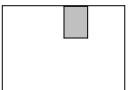
Copyright © Schema dal Sito [www.laura-stitch.it](http://www.laura-stitch.it)



Veliero

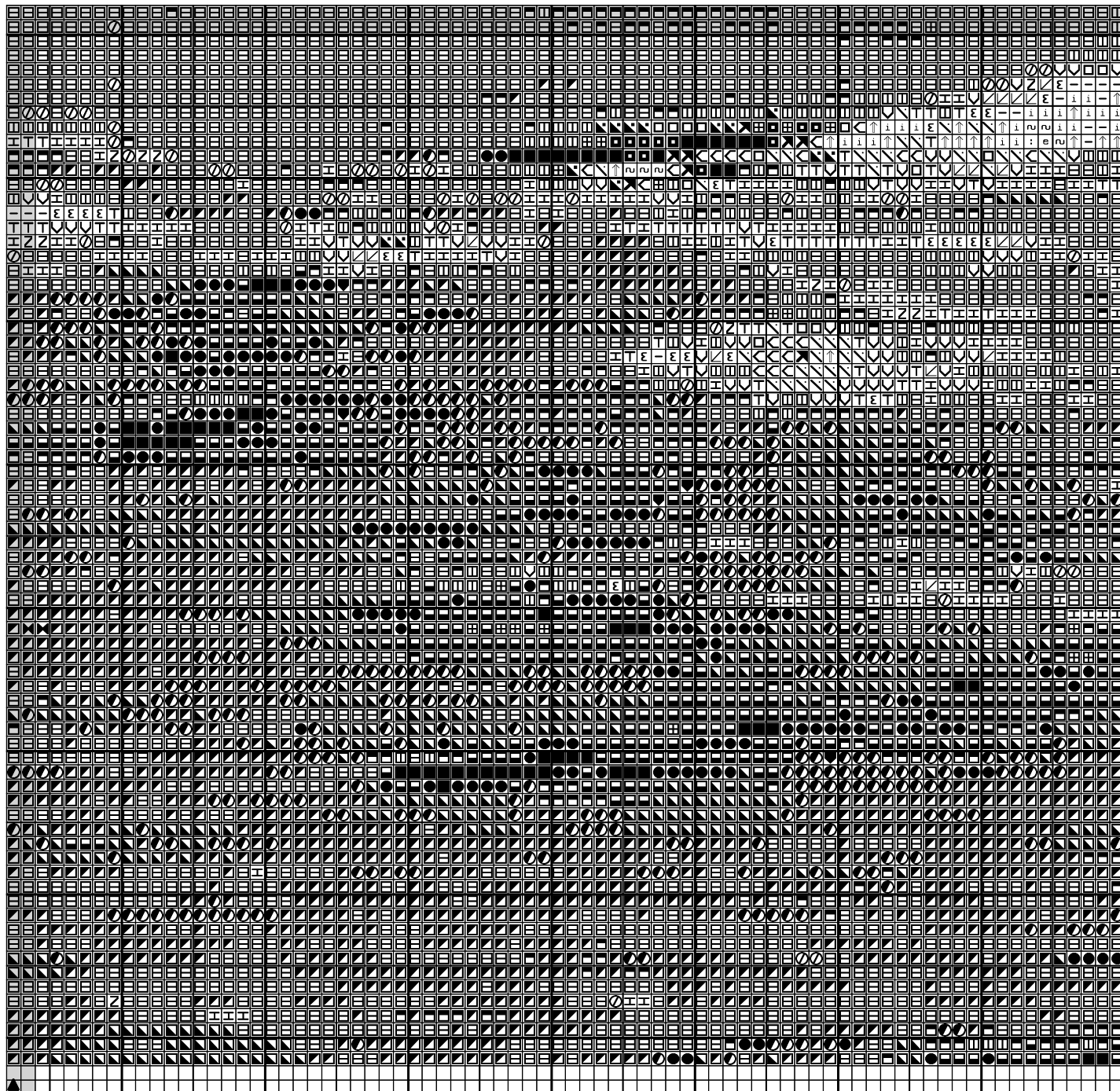


Copyright © Schema dal Sito [www.laura-stitch.it](http://www.laura-stitch.it)

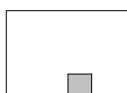


## This image is a highly detailed, high-contrast black and white pattern. It consists of a dense, repeating grid of small, stylized geometric shapes, including squares, triangles, and diamonds. The pattern is complex and intricate, with a variety of shades of gray and black, creating a textured, almost woven appearance. The overall effect is one of a highly detailed, digital or printed texture, possibly a background for a book cover or a decorative element in a design project.

# Veliero

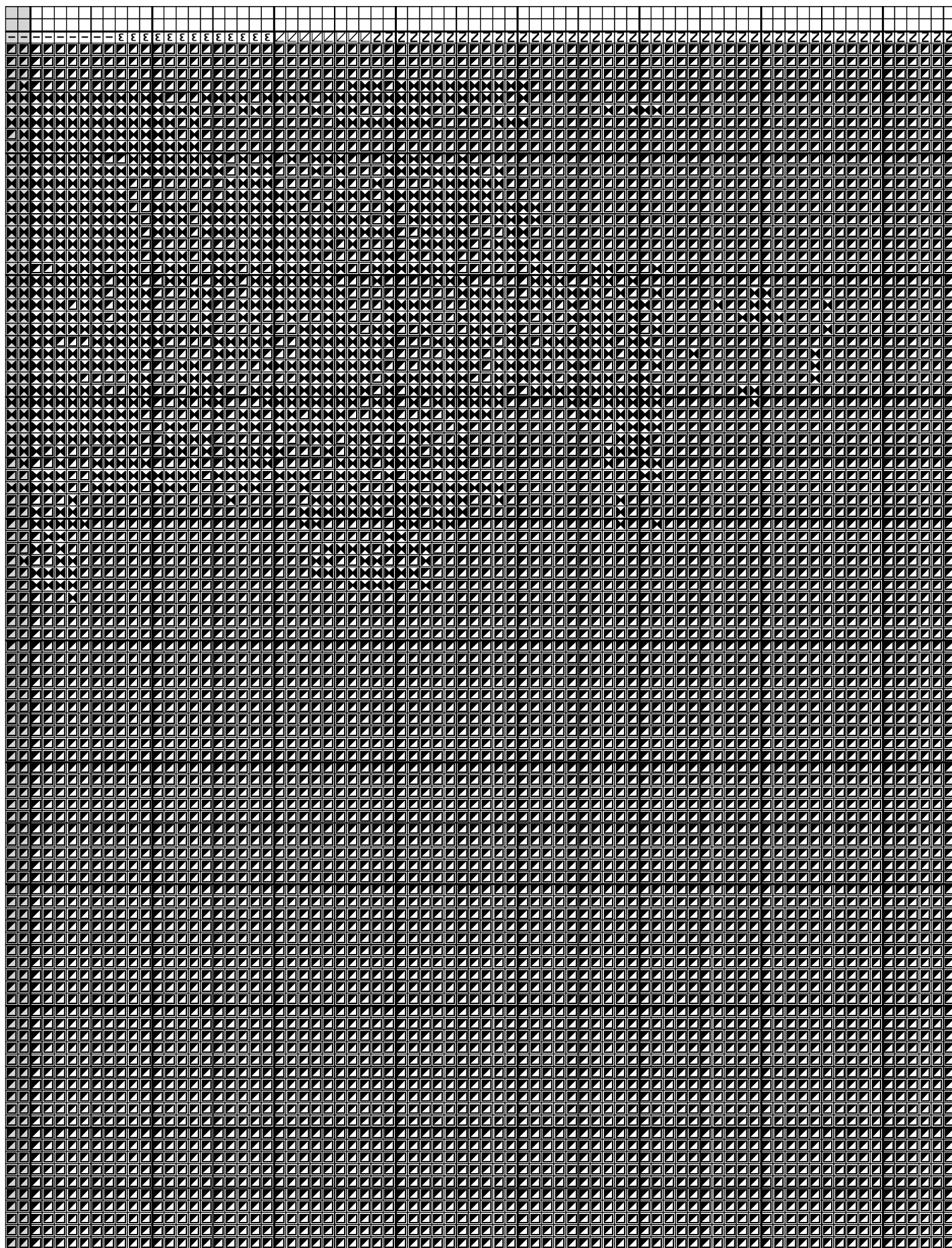


Copyright © Schema dal Sito [www.laura-stitch.it](http://www.laura-stitch.it)

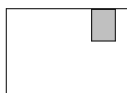




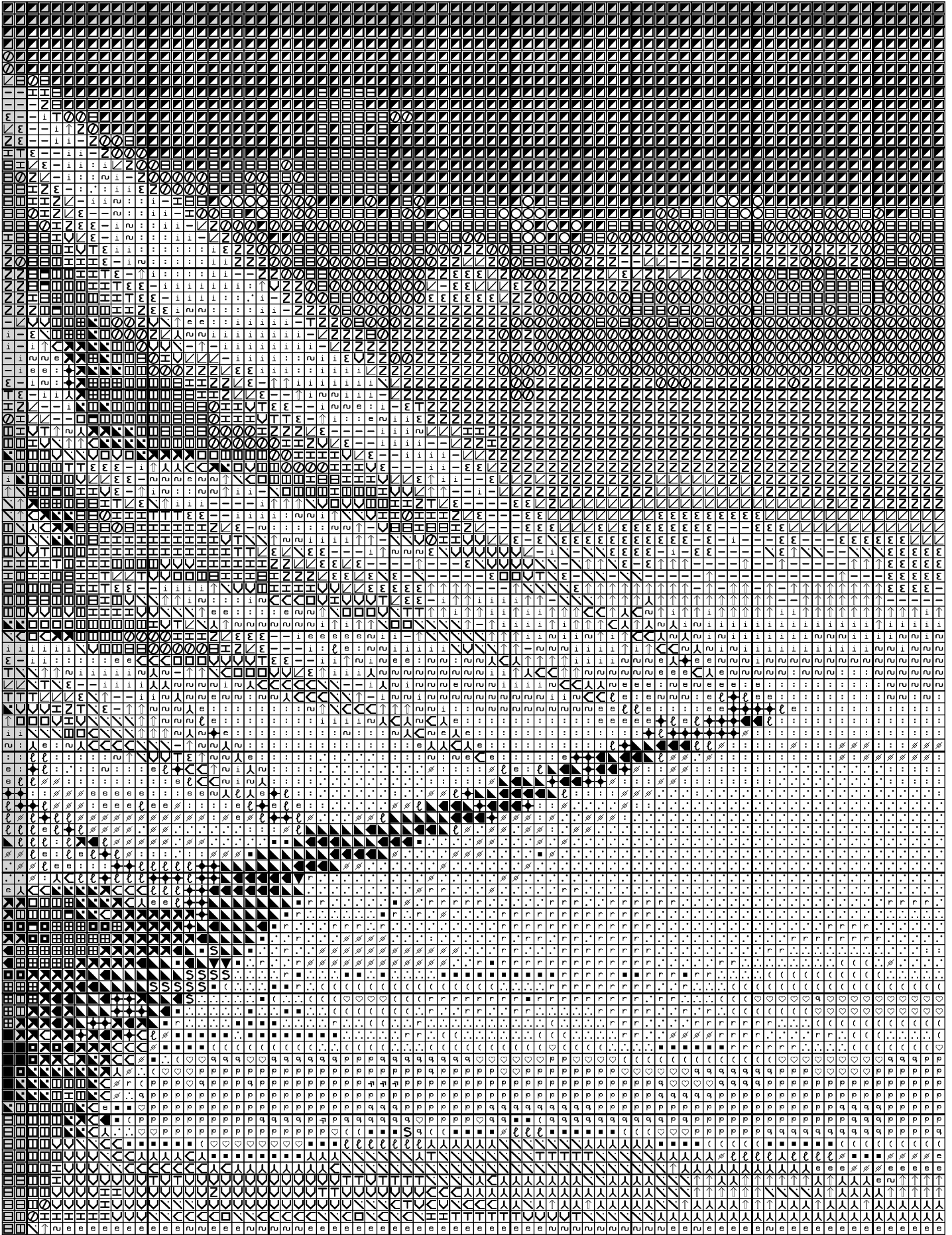
# Veliero



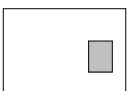
Copyright © Schema dal Sito [www.laura-stitch.it](http://www.laura-stitch.it)



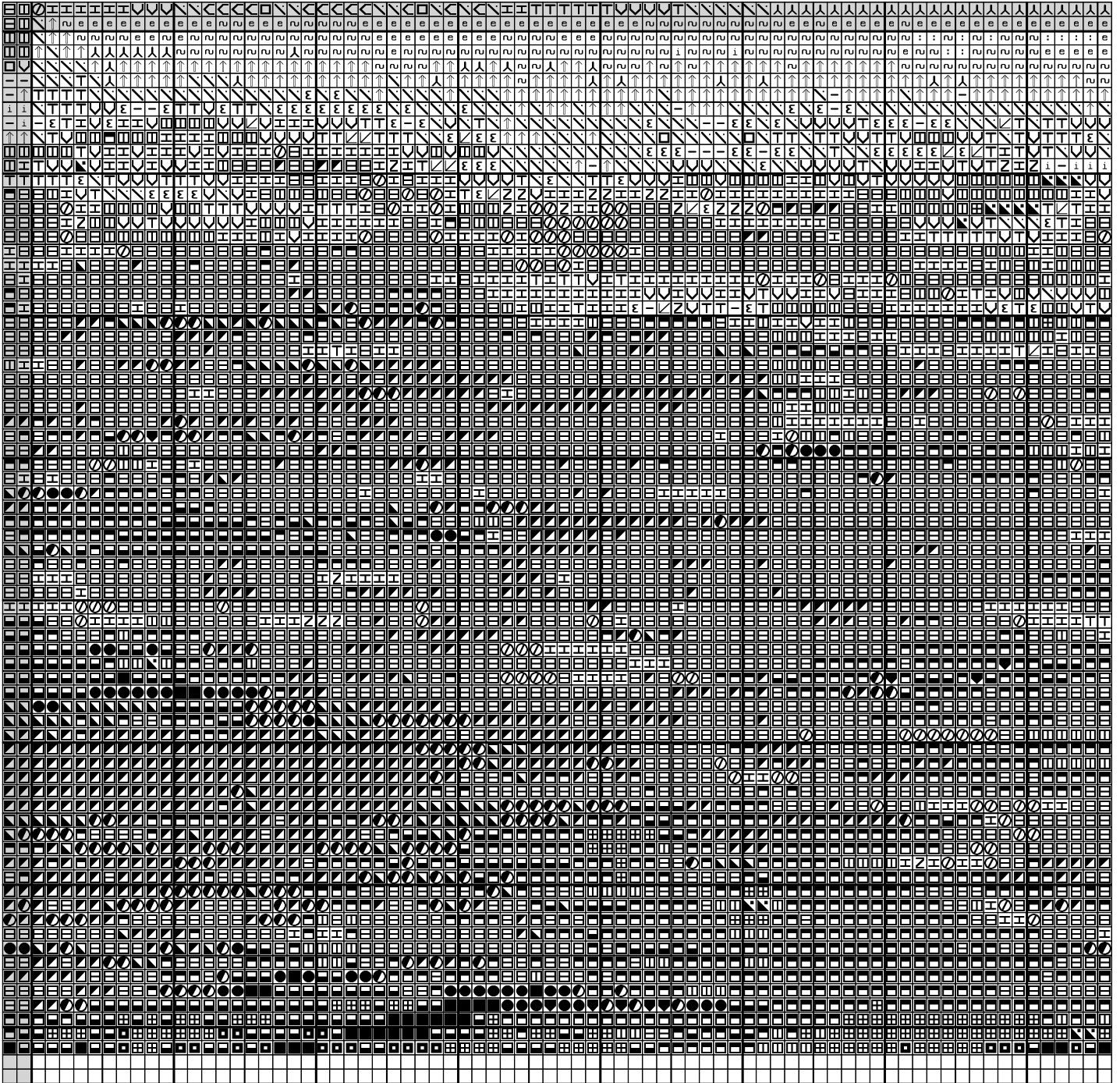
# Veliero



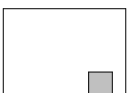
Copyright © Schema dal Sito [www.laura-stitch.it](http://www.laura-stitch.it)



# Veliero

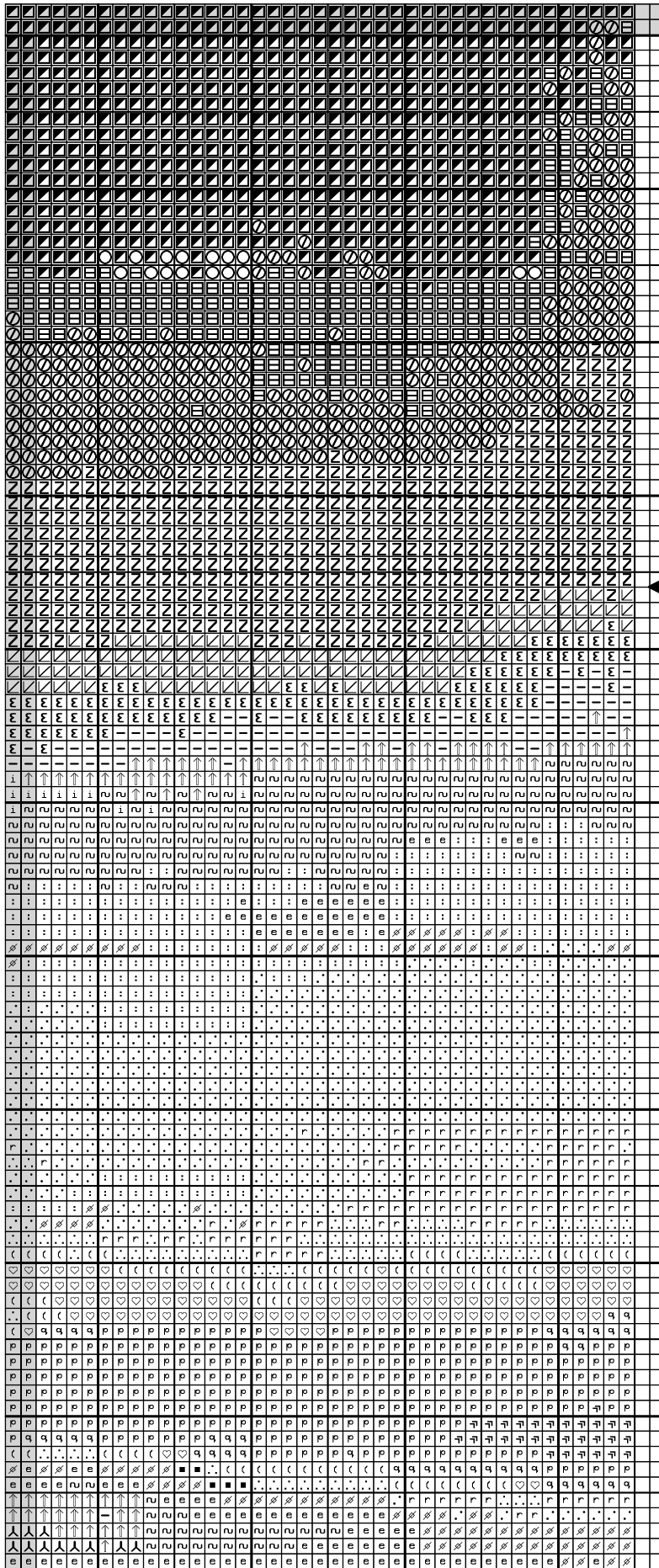


Copyright © Schema dal Sito [www.laura-stitch.it](http://www.laura-stitch.it)





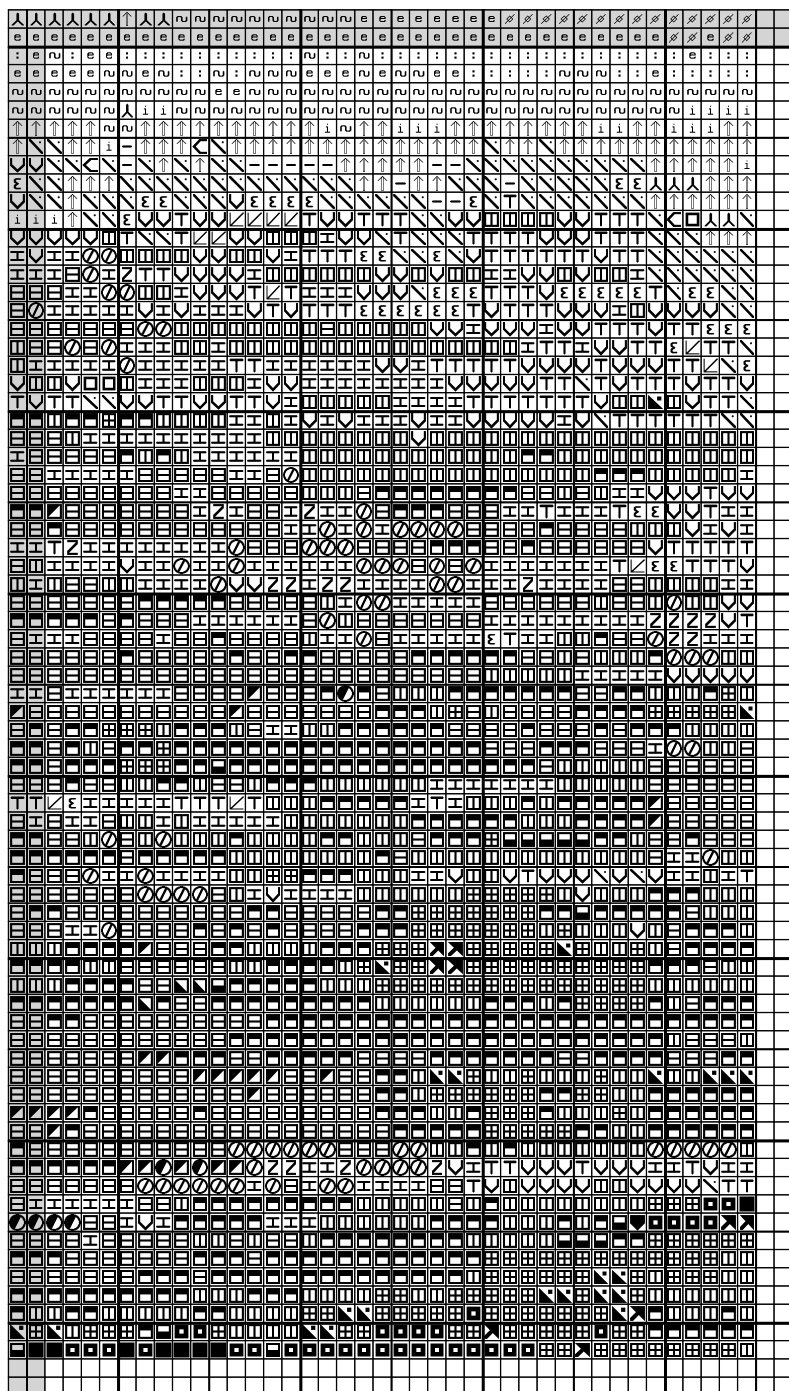
# Veliero



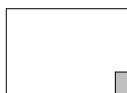
Copyright © Schema dal Sito [www.laura-stitch.it](http://www.laura-stitch.it)



# Veliero



Copyright © Schema dal Sito [www.laura-stitch.it](http://www.laura-stitch.it)



-	Blue Violet vy lt	DMC 3747
□	Cornflower Blue med	793
↑	Delft pale	800
↗	Delft	809
↘	Delft med	799
◻	Delft dk	798
◼	Royal Blue dk	796
≈	Antique Blue ultra vy lt	3753
∧	Antique Blue vy lt	3752
∨	Antique Blue lt	932
✕	Antique Blue med	931
■	Antique Blue dk	930
i	Baby Blue ultra vy lt	3756
/	Baby Blue lt	3325
▢	Baby Blue med	334
◻	Navy Blue vy lt	322
◼	Navy lt	312
◼	Navy med	311
⊥	Blue vy lt	827
⊥	Blue lt	813
⊥	Blue med	826
◻	Wedgewood dk	517
◼	Dark Wedgewood	3842
✕	Electric Blue dk	995
◻	Blue Green	597
◻	Blue Green med	3810
◻	Blue Green dk	3809
■	Yellow Beige lt	3047
S	Hazelnut Brown lt	422
▼	Hazelnut Brown dk	420
♡	Lemon lt	445
(	Golden Yellow vy lt	3078
p	Topaz vy lt	727
∴	Yellow ultra vy lt	3823
≡	Yellow med	743
r	Flesh ultra vy lt	3770
∴	Cream	712
ℓ	Brown Grey vy lt	3024
◼	Brown Grey dk	3021
:	Winter White	3865
✕	Ultra very Light Mocha Brown	3866
◼	Mocha Brown med dk	3032
e	Beaver Grey vy lt	3072
✦	Steel Grey lt	318
ε	Lavender Blue lt	3840
N	Lavender Blue	3839
◻	Lavender Blue dk	3838
○	Bright Turquoise lt	3846
q	Autumn Gold lt	3855

Stitch Count 385 x 272

Design Area 70.0 x 49.5 cm at 55 sts per 10cm

## Note: Attenzione!!!

Gli schemi che sono proposti su più pagine, presentano su alcuni fogli due righe di quadrettini leggermente ombreggiati, queste righe in ombra NON VANNO ricamate, in quanto sono solamente un richiamo ed indicano che da quel lato del foglio esiste ancora parte di schema. Sono quindi righe ripetute e sono state ricamate con l'altra parte di schema. Eventuali colori della DMC soppiantati e non più disponibili possono essere sostituiti con i corrispondenti di altre marche, tipo ANCHOR, ecc. usando le opportune tabelle di conversione.