

# XUMEDA

По картине "С Андером"

Finished Design Size 390w X 515h Stitches



2015 г.

	10	20	30	40	50	60
0	0	0	0	0	0	0
1	1	1	1	1	1	1
2	2	2	2	2	2	2
3	3	3	3	3	3	3
4	4	4	4	4	4	4
5	5	5	5	5	5	5
6	6	6	6	6	6	6
7	7	7	7	7	7	7
8	8	8	8	8	8	8
9	9	9	9	9	9	9
10	10	10	10	10	10	10
11	11	11	11	11	11	11
12	12	12	12	12	12	12
13	13	13	13	13	13	13
14	14	14	14	14	14	14
15	15	15	15	15	15	15
16	16	16	16	16	16	16
17	17	17	17	17	17	17
18	18	18	18	18	18	18
19	19	19	19	19	19	19
20	20	20	20	20	20	20
21	21	21	21	21	21	21
22	22	22	22	22	22	22
23	23	23	23	23	23	23
24	24	24	24	24	24	24
25	25	25	25	25	25	25
26	26	26	26	26	26	26
27	27	27	27	27	27	27
28	28	28	28	28	28	28
29	29	29	29	29	29	29
30	30	30	30	30	30	30
31	31	31	31	31	31	31
32	32	32	32	32	32	32
33	33	33	33	33	33	33
34	34	34	34	34	34	34
35	35	35	35	35	35	35
36	36	36	36	36	36	36
37	37	37	37	37	37	37
38	38	38	38	38	38	38
39	39	39	39	39	39	39
40	40	40	40	40	40	40
41	41	41	41	41	41	41
42	42	42	42	42	42	42
43	43	43	43	43	43	43
44	44	44	44	44	44	44
45	45	45	45	45	45	45
46	46	46	46	46	46	46
47	47	47	47	47	47	47
48	48	48	48	48	48	48
49	49	49	49	49	49	49
50	50	50	50	50	50	50
51	51	51	51	51	51	51
52	52	52	52	52	52	52
53	53	53	53	53	53	53
54	54	54	54	54	54	54
55	55	55	55	55	55	55
56	56	56	56	56	56	56
57	57	57	57	57	57	57
58	58	58	58	58	58	58
59	59	59	59	59	59	59
60	60	60	60	60	60	60
61	61	61	61	61	61	61
62	62	62	62	62	62	62
63	63	63	63	63	63	63
64	64	64	64	64	64	64
65	65	65	65	65	65	65
66	66	66	66	66	66	66
67	67	67	67	67	67	67
68	68	68	68	68	68	68
69	69	69	69	69	69	69
70	70	70	70	70	70	70
71	71	71	71	71	71	71
72	72	72	72	72	72	72
73	73	73	73	73	73	73
74	74	74	74	74	74	74
75	75	75	75	75	75	75
76	76	76	76	76	76	76
77	77	77	77	77	77	77
78	78	78	78	78	78	78
79	79	79	79	79	79	79
80	80	80	80	80	80	80
81	81	81	81	81	81	81
82	82	82	82	82	82	82
83	83	83	83	83	83	83
84	84	84	84	84	84	84
85	85	85	85	85	85	85
86	86	86	86	86	86	86
87	87	87	87	87	87	87
88	88	88	88	88	88	88
89	89	89	89	89	89	89
90	90	90	90	90	90	90



	130	140	150	160	170	180
10	...	...	...	...	...	...
20	...	...	...	...	...	...
30	...	...	...	...	...	...
40	...	...	...	...	...	...
50	...	...	...	...	...	...
60	...	...	...	...	...	...
70	...	...	...	...	...	...
80	...	...	...	...	...	...
90	...	...	...	...	...	...

	190	200	210	220	230	240
10	...	...	...	...	...	...
20	...	...	...	...	...	...
30	...	...	...	...	...	...
40	...	...	...	...	...	...
50	...	...	...	...	...	...
60	...	...	...	...	...	...
70	...	...	...	...	...	...
80	...	...	...	...	...	...
90	...	...	...	...	...	...

	250	260	270	280	290	300
10	...	...	...	...	...	...
20	...	...	...	...	...	...
30	...	...	...	...	...	...
40	...	...	...	...	...	...
50	...	...	...	...	...	...
60	...	...	...	...	...	...
70	...	...	...	...	...	...
80	...	...	...	...	...	...
90	...	...	...	...	...	...









	10	20	30	40	50	60
90	(	(	(	(	(	(
100	(	(	(	(	(	(
110	(	(	(	(	(	(
120	(	(	(	(	(	(
130	(	(	(	(	(	(
140	(	(	(	(	(	(
150	(	(	(	(	(	(
160	(	(	(	(	(	(
170	(	(	(	(	(	(

	70	80	90	100	110	120
90	...	...	...	...	...	...
100	...	...	...	...	...	...
110	...	...	...	...	...	...
120	...	...	...	...	...	...
130	...	...	...	...	...	...
140	...	...	...	...	...	...
150	...	...	...	...	...	...
160	...	...	...	...	...	...
170	...	...	...	...	...	...

	130	140	150	160	170	180
90	...	...	...	...	...	...
100	...	...	...	...	...	...
110	...	...	...	...	...	...
120	...	...	...	...	...	...
130	...	...	...	...	...	...
140	...	...	...	...	...	...
150	...	...	...	...	...	...
160	...	...	...	...	...	...
170	...	...	...	...	...	...

	190	200	210	220	230	240
90	...	...	...	...	...	...
100	...	...	...	...	...	...
110	...	...	...	...	...	...
120	...	...	...	...	...	...
130	...	...	...	...	...	...
140	...	...	...	...	...	...
150	...	...	...	...	...	...
160	...	...	...	...	...	...
170	...	...	...	...	...	...

	250	260	270	280	290	300
90	...	...	...	...	...	...
100	...	...	...	...	...	...
110	...	...	...	...	...	...
120	...	...	...	...	...	...
130	...	...	...	...	...	...
140	...	...	...	...	...	...
150	...	...	...	...	...	...
160	...	...	...	...	...	...
170	...	...	...	...	...	...

	310	320	330	340	350	360
90	...	...	...	...	...	...
100	...	...	...	...	...	...
110	...	...	...	...	...	...
120	...	...	...	...	...	...
130	...	...	...	...	...	...
140	...	...	...	...	...	...
150	...	...	...	...	...	...
160	...	...	...	...	...	...
170	...	...	...	...	...	...

	370	380	390
90	⊕	⊕	⊕
91	⊕	⊕	⊕
92	⊕	⊕	⊕
93	⊕	⊕	⊕
94	⊕	⊕	⊕
95	⊕	⊕	⊕
96	⊕	⊕	⊕
97	⊕	⊕	⊕
98	⊕	⊕	⊕
99	⊕	⊕	⊕
100	⊕	⊕	⊕
101	⊕	⊕	⊕
102	⊕	⊕	⊕
103	⊕	⊕	⊕
104	⊕	⊕	⊕
105	⊕	⊕	⊕
106	⊕	⊕	⊕
107	⊕	⊕	⊕
108	⊕	⊕	⊕
109	⊕	⊕	⊕
110	⊕	⊕	⊕
111	⊕	⊕	⊕
112	⊕	⊕	⊕
113	⊕	⊕	⊕
114	⊕	⊕	⊕
115	⊕	⊕	⊕
116	⊕	⊕	⊕
117	⊕	⊕	⊕
118	⊕	⊕	⊕
119	⊕	⊕	⊕
120	⊕	⊕	⊕
121	⊕	⊕	⊕
122	⊕	⊕	⊕
123	⊕	⊕	⊕
124	⊕	⊕	⊕
125	⊕	⊕	⊕
126	⊕	⊕	⊕
127	⊕	⊕	⊕
128	⊕	⊕	⊕
129	⊕	⊕	⊕
130	⊕	⊕	⊕
131	⊕	⊕	⊕
132	⊕	⊕	⊕
133	⊕	⊕	⊕
134	⊕	⊕	⊕
135	⊕	⊕	⊕
136	⊕	⊕	⊕
137	⊕	⊕	⊕
138	⊕	⊕	⊕
139	⊕	⊕	⊕
140	⊕	⊕	⊕
141	⊕	⊕	⊕
142	⊕	⊕	⊕
143	⊕	⊕	⊕
144	⊕	⊕	⊕
145	⊕	⊕	⊕
146	⊕	⊕	⊕
147	⊕	⊕	⊕
148	⊕	⊕	⊕
149	⊕	⊕	⊕
150	⊕	⊕	⊕
151	⊕	⊕	⊕
152	⊕	⊕	⊕
153	⊕	⊕	⊕
154	⊕	⊕	⊕
155	⊕	⊕	⊕
156	⊕	⊕	⊕
157	⊕	⊕	⊕
158	⊕	⊕	⊕
159	⊕	⊕	⊕
160	⊕	⊕	⊕
161	⊕	⊕	⊕
162	⊕	⊕	⊕
163	⊕	⊕	⊕
164	⊕	⊕	⊕
165	⊕	⊕	⊕
166	⊕	⊕	⊕
167	⊕	⊕	⊕
168	⊕	⊕	⊕
169	⊕	⊕	⊕
170	⊕	⊕	⊕



	10	20	30	40	50	60
180	...	...	...	...	...	...
190	...	...	...	...	...	...
200	...	...	...	...	...	...
210	...	...	...	...	...	...
220	...	...	...	...	...	...
230	...	...	...	...	...	...
240	...	...	...	...	...	...
250	...	...	...	...	...	...
260	...	...	...	...	...	...

	70	80	90	100	110	120
180	T Z	* T	Z T	H T	H T	H T
190	T Z	* T	Z T	H T	H T	H T
200	T Z	* T	Z T	H T	H T	H T
210	T Z	* T	Z T	H T	H T	H T
220	T Z	* T	Z T	H T	H T	H T
230	T Z	* T	Z T	H T	H T	H T
240	T Z	* T	Z T	H T	H T	H T
250	T Z	* T	Z T	H T	H T	H T
260	T Z	* T	Z T	H T	H T	H T

	130	140	150	160	170	180
180	...	...	...	...	...	...
190	...	...	...	...	...	...
200	...	...	...	...	...	...
210	...	...	...	...	...	...
220	...	...	...	...	...	...
230	...	...	...	...	...	...
240	...	...	...	...	...	...
250	...	...	...	...	...	...
260	...	...	...	...	...	...

	190	200	210	220	230	240
180	...	...	...	...	...	...
190	...	...	...	...	...	...
200	...	...	...	...	...	...
210	...	...	...	...	...	...
220	...	...	...	...	...	...
230	...	...	...	...	...	...
240	...	...	...	...	...	...
250	...	...	...	...	...	...
260	...	...	...	...	...	...

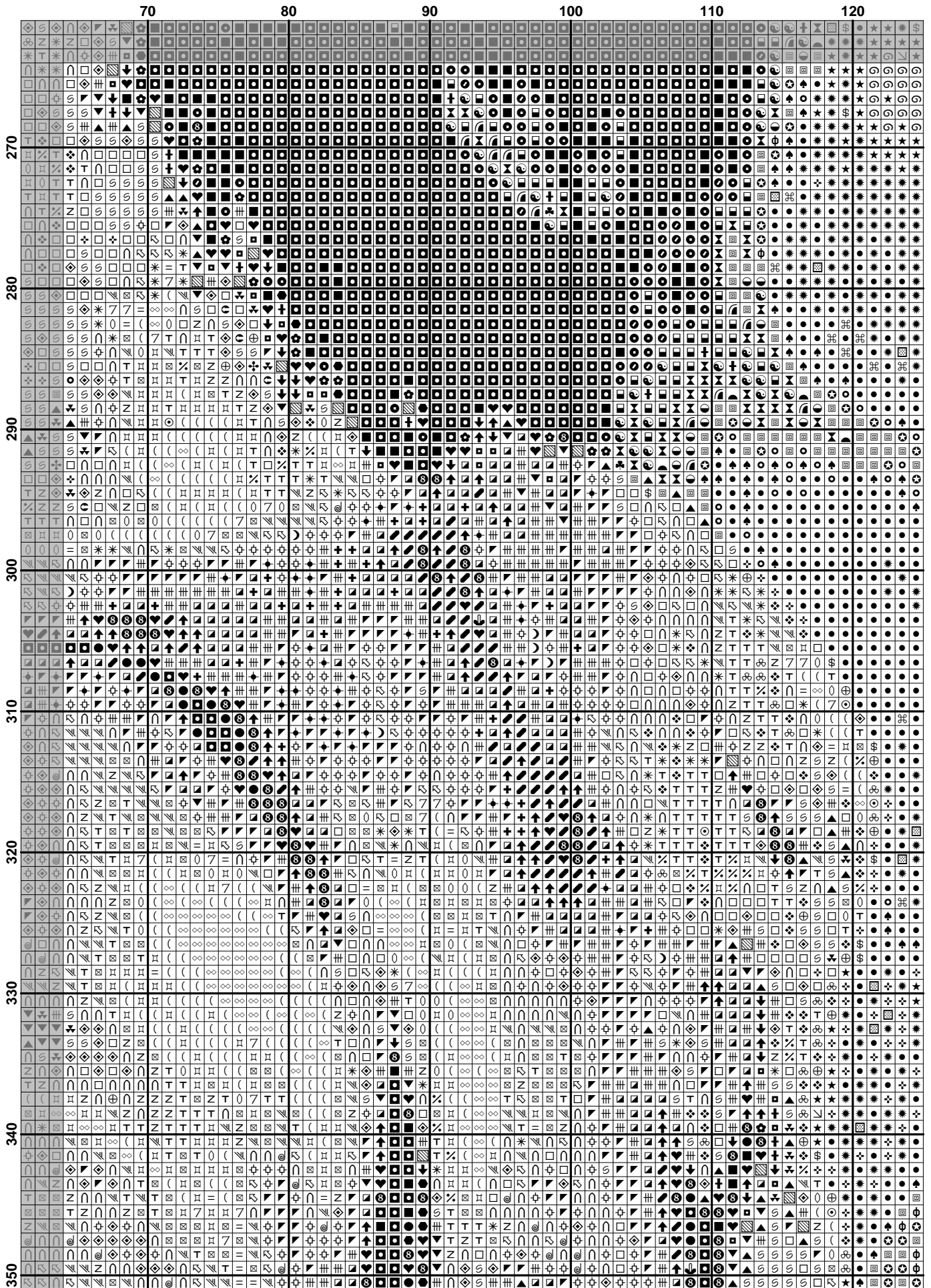
	250	260	270	280	290	300
180	+	+	+	+	+	+
190	+	+	+	+	+	+
200	+	+	+	+	+	+
210	+	+	+	+	+	+
220	+	+	+	+	+	+
230	+	+	+	+	+	+
240	+	+	+	+	+	+
250	+	+	+	+	+	+
260	+	+	+	+	+	+

	310	320	330	340	350	360
180	...	...	...	...	...	...
190	...	...	...	...	...	...
200	...	...	...	...	...	...
210	...	...	...	...	...	...
220	...	...	...	...	...	...
230	...	...	...	...	...	...
240	...	...	...	...	...	...
250	...	...	...	...	...	...
260	...	...	...	...	...	...

	370	380	390
180	☉	☉	☉
190	☉	☉	☉
200	☉	☉	☉
210	☉	☉	☉
220	☉	☉	☉
230	☉	☉	☉
240	☉	☉	☉
250	☉	☉	☉
260	☉	☉	☉



	10	20	30	40	50	60
270	...	...	...	...	...	...
280	...	...	...	...	...	...
290	...	...	...	...	...	...
300	...	...	...	...	...	...
310	...	...	...	...	...	...
320	...	...	...	...	...	...
330	...	...	...	...	...	...
340	...	...	...	...	...	...
350	...	...	...	...	...	...



	130	140	150	160	170	180
270	★	★	★	★	★	★
280	★	★	★	★	★	★
290	★	★	★	★	★	★
300	★	★	★	★	★	★
310	★	★	★	★	★	★
320	★	★	★	★	★	★
330	★	★	★	★	★	★
340	★	★	★	★	★	★
350	★	★	★	★	★	★

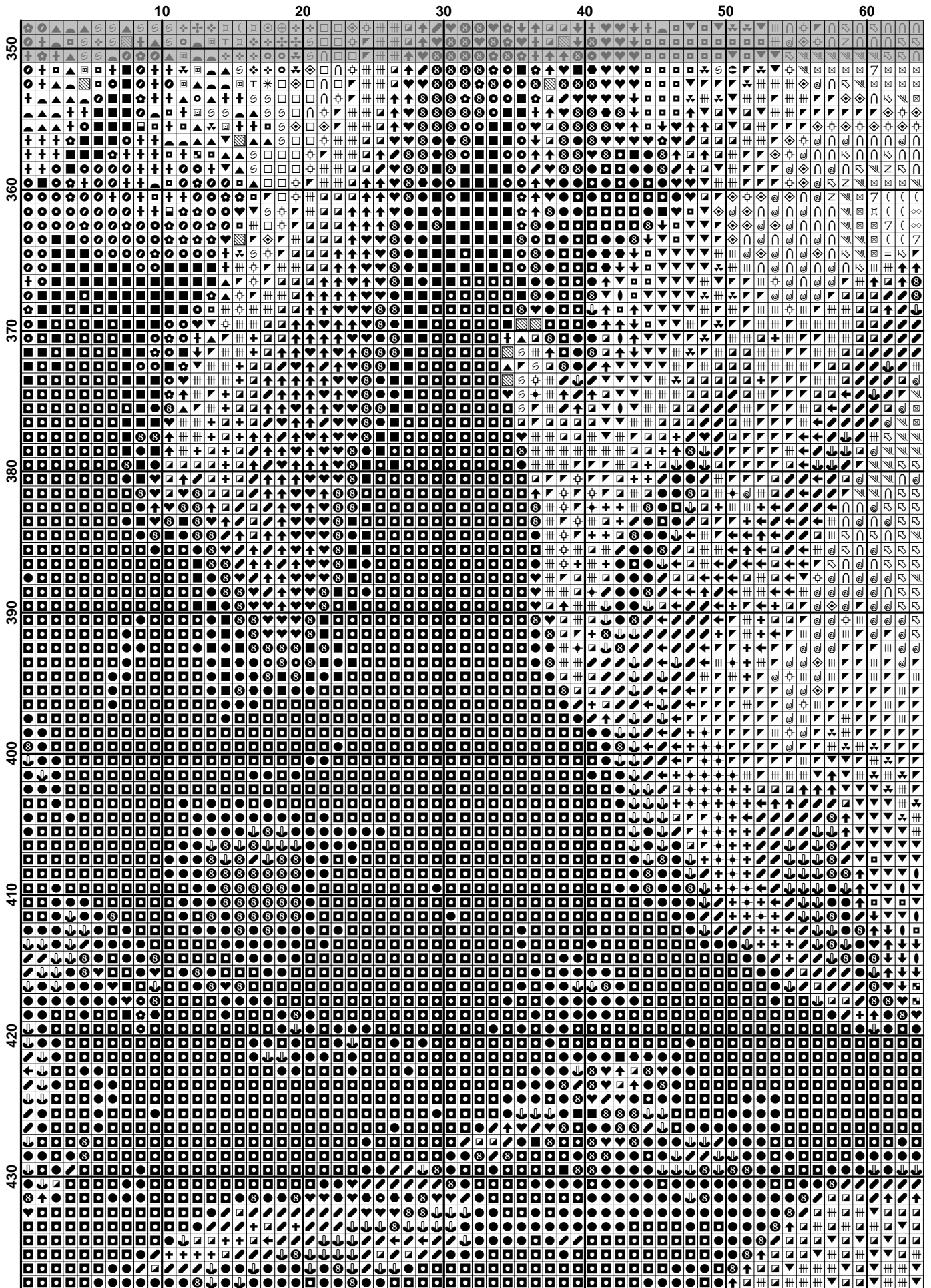
	190	200	210	220	230	240
270	N	N	N	N	N	N
271	N	N	N	N	N	N
272	N	N	N	N	N	N
273	N	N	N	N	N	N
274	N	N	N	N	N	N
275	N	N	N	N	N	N
276	N	N	N	N	N	N
277	N	N	N	N	N	N
278	N	N	N	N	N	N
279	N	N	N	N	N	N
280	N	N	N	N	N	N
281	N	N	N	N	N	N
282	N	N	N	N	N	N
283	N	N	N	N	N	N
284	N	N	N	N	N	N
285	N	N	N	N	N	N
286	N	N	N	N	N	N
287	N	N	N	N	N	N
288	N	N	N	N	N	N
289	N	N	N	N	N	N
290	N	N	N	N	N	N
291	N	N	N	N	N	N
292	N	N	N	N	N	N
293	N	N	N	N	N	N
294	N	N	N	N	N	N
295	N	N	N	N	N	N
296	N	N	N	N	N	N
297	N	N	N	N	N	N
298	N	N	N	N	N	N
299	N	N	N	N	N	N
300	N	N	N	N	N	N
301	N	N	N	N	N	N
302	N	N	N	N	N	N
303	N	N	N	N	N	N
304	N	N	N	N	N	N
305	N	N	N	N	N	N
306	N	N	N	N	N	N
307	N	N	N	N	N	N
308	N	N	N	N	N	N
309	N	N	N	N	N	N
310	N	N	N	N	N	N
311	N	N	N	N	N	N
312	N	N	N	N	N	N
313	N	N	N	N	N	N
314	N	N	N	N	N	N
315	N	N	N	N	N	N
316	N	N	N	N	N	N
317	N	N	N	N	N	N
318	N	N	N	N	N	N
319	N	N	N	N	N	N
320	N	N	N	N	N	N
321	N	N	N	N	N	N
322	N	N	N	N	N	N
323	N	N	N	N	N	N
324	N	N	N	N	N	N
325	N	N	N	N	N	N
326	N	N	N	N	N	N
327	N	N	N	N	N	N
328	N	N	N	N	N	N
329	N	N	N	N	N	N
330	N	N	N	N	N	N
331	N	N	N	N	N	N
332	N	N	N	N	N	N
333	N	N	N	N	N	N
334	N	N	N	N	N	N
335	N	N	N	N	N	N
336	N	N	N	N	N	N
337	N	N	N	N	N	N
338	N	N	N	N	N	N
339	N	N	N	N	N	N
340	N	N	N	N	N	N
341	N	N	N	N	N	N
342	N	N	N	N	N	N
343	N	N	N	N	N	N
344	N	N	N	N	N	N
345	N	N	N	N	N	N
346	N	N	N	N	N	N
347	N	N	N	N	N	N
348	N	N	N	N	N	N
349	N	N	N	N	N	N
350	N	N	N	N	N	N

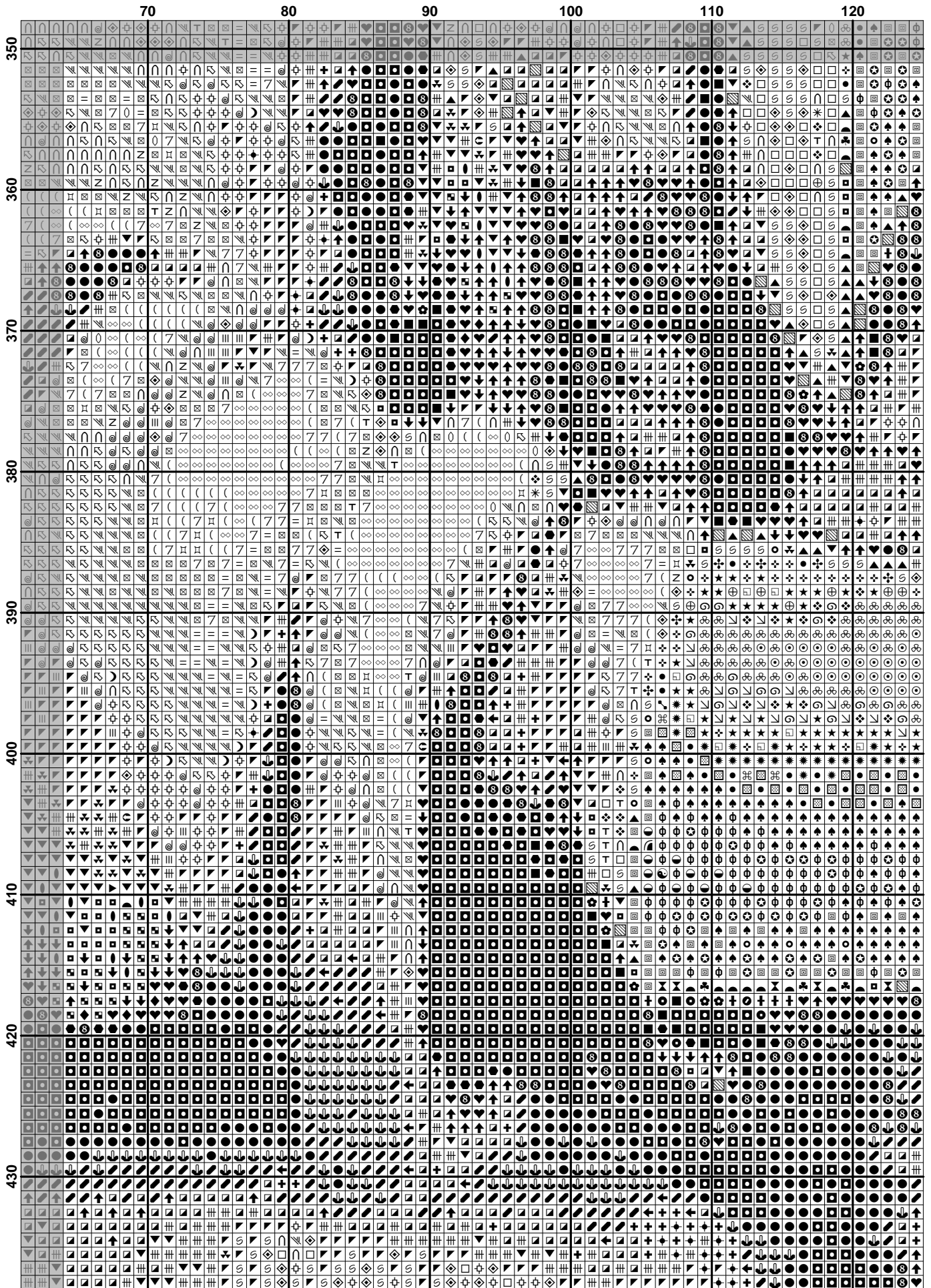
	250	260	270	280	290	300
270	...	...	...	...	...	...
280	...	...	...	...	...	...
290	...	...	...	...	...	...
300	...	...	...	...	...	...
310	...	...	...	...	...	...
320	...	...	...	...	...	...
330	...	...	...	...	...	...
340	...	...	...	...	...	...
350	...	...	...	...	...	...

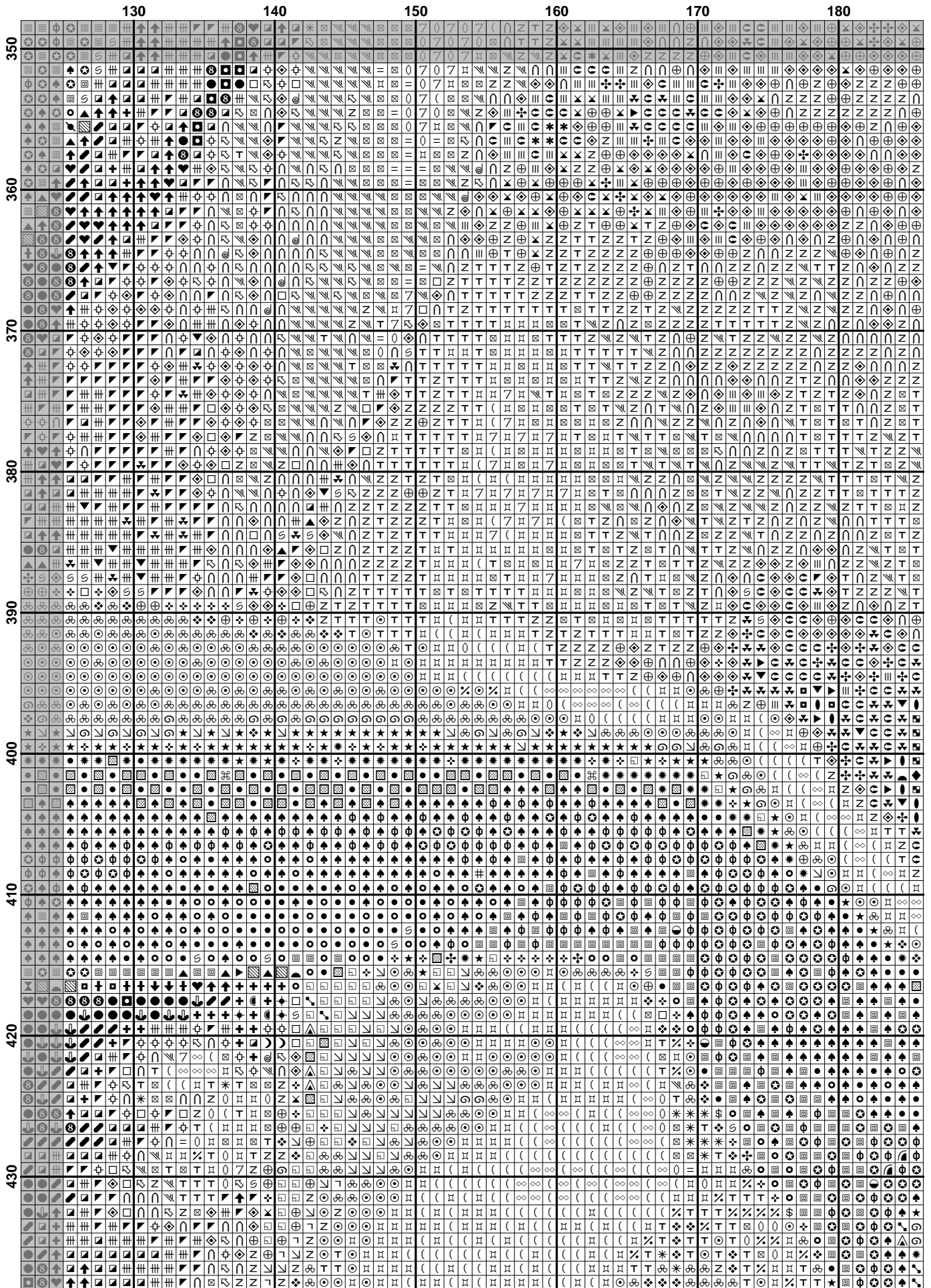












	190	200	210	220	230	240
350	+	+	+	+	+	+
360	+	+	+	+	+	+
370	+	+	+	+	+	+
380	+	+	+	+	+	+
390	+	+	+	+	+	+
400	+	+	+	+	+	+
410	+	+	+	+	+	+
420	+	+	+	+	+	+
430	+	+	+	+	+	+

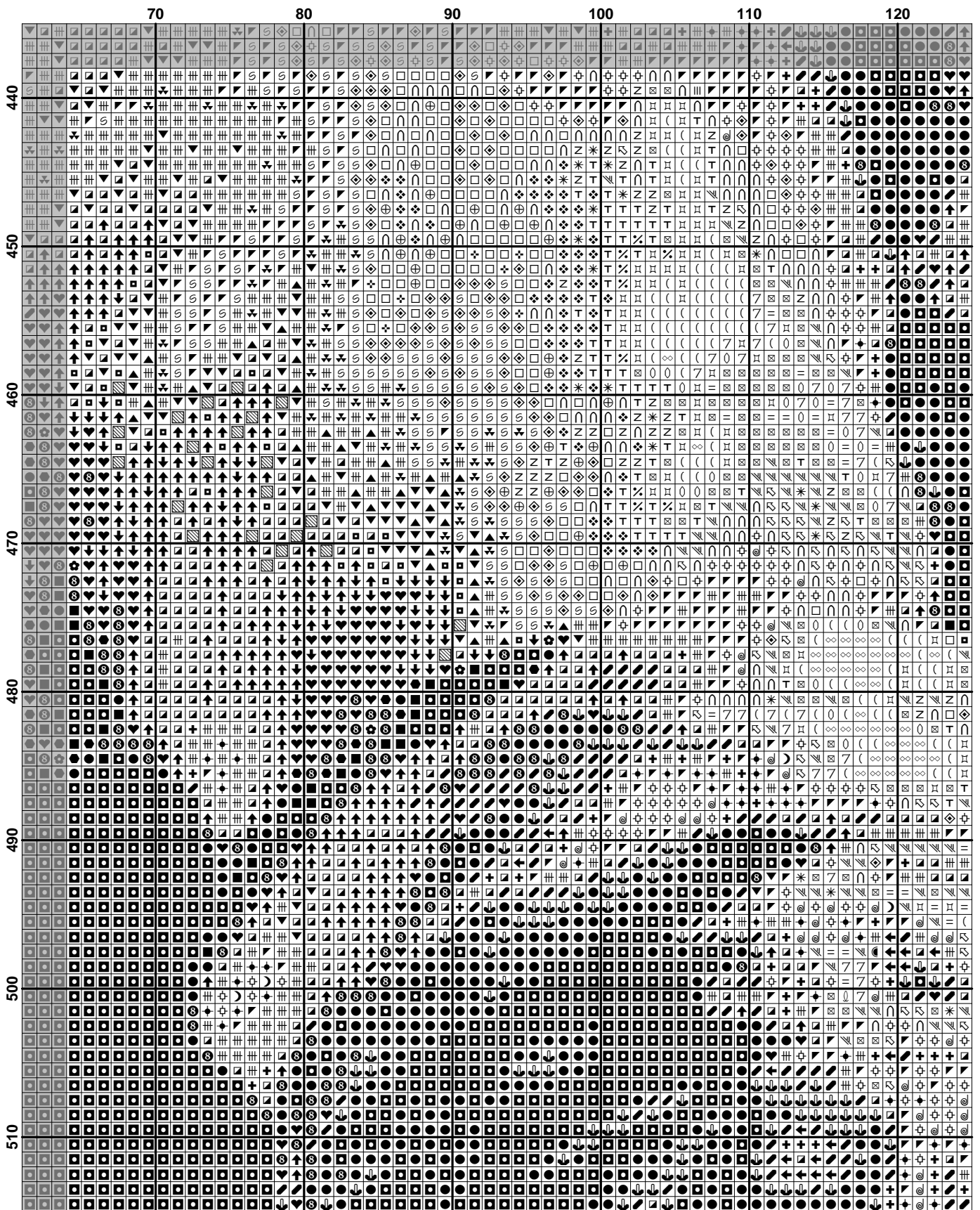


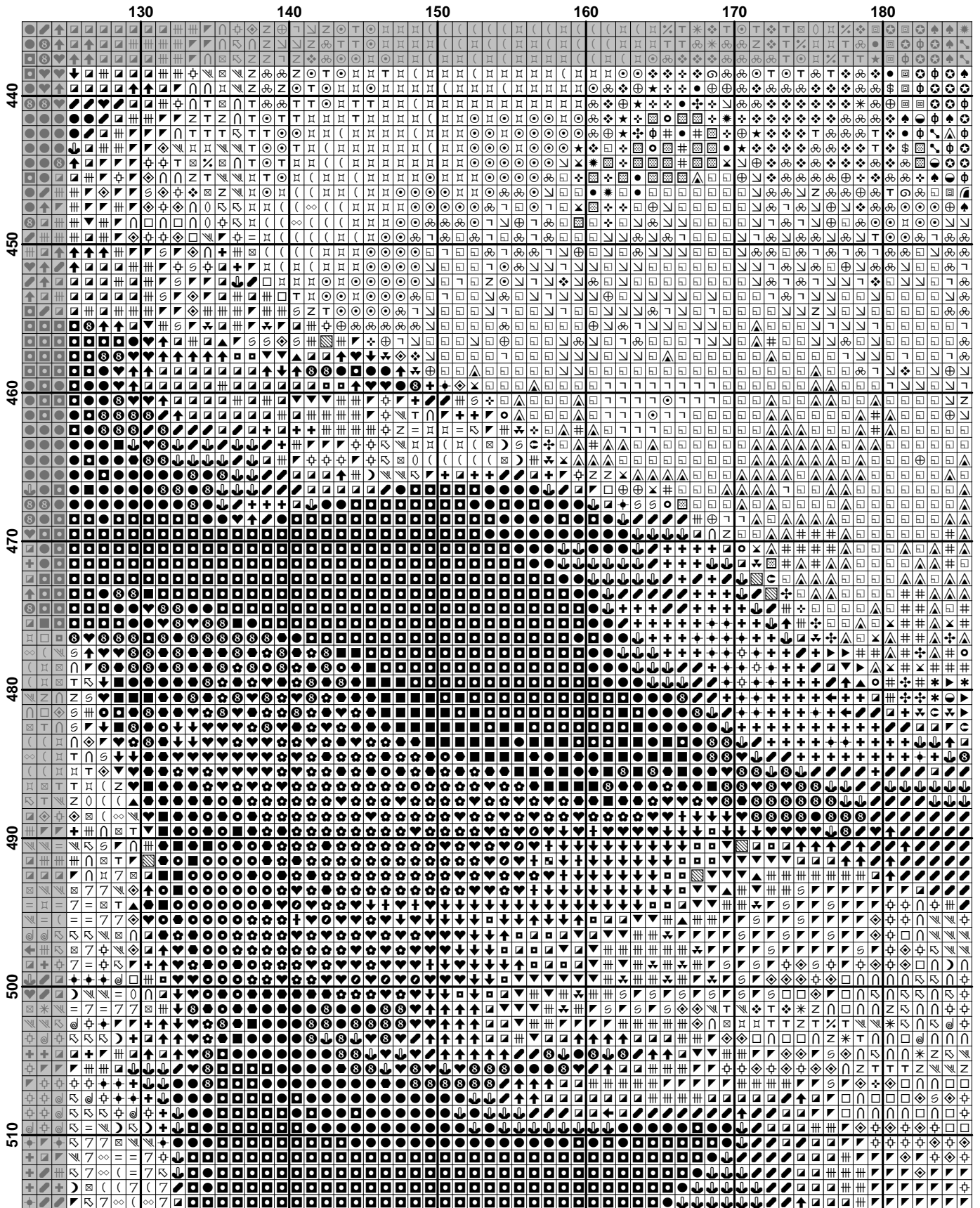


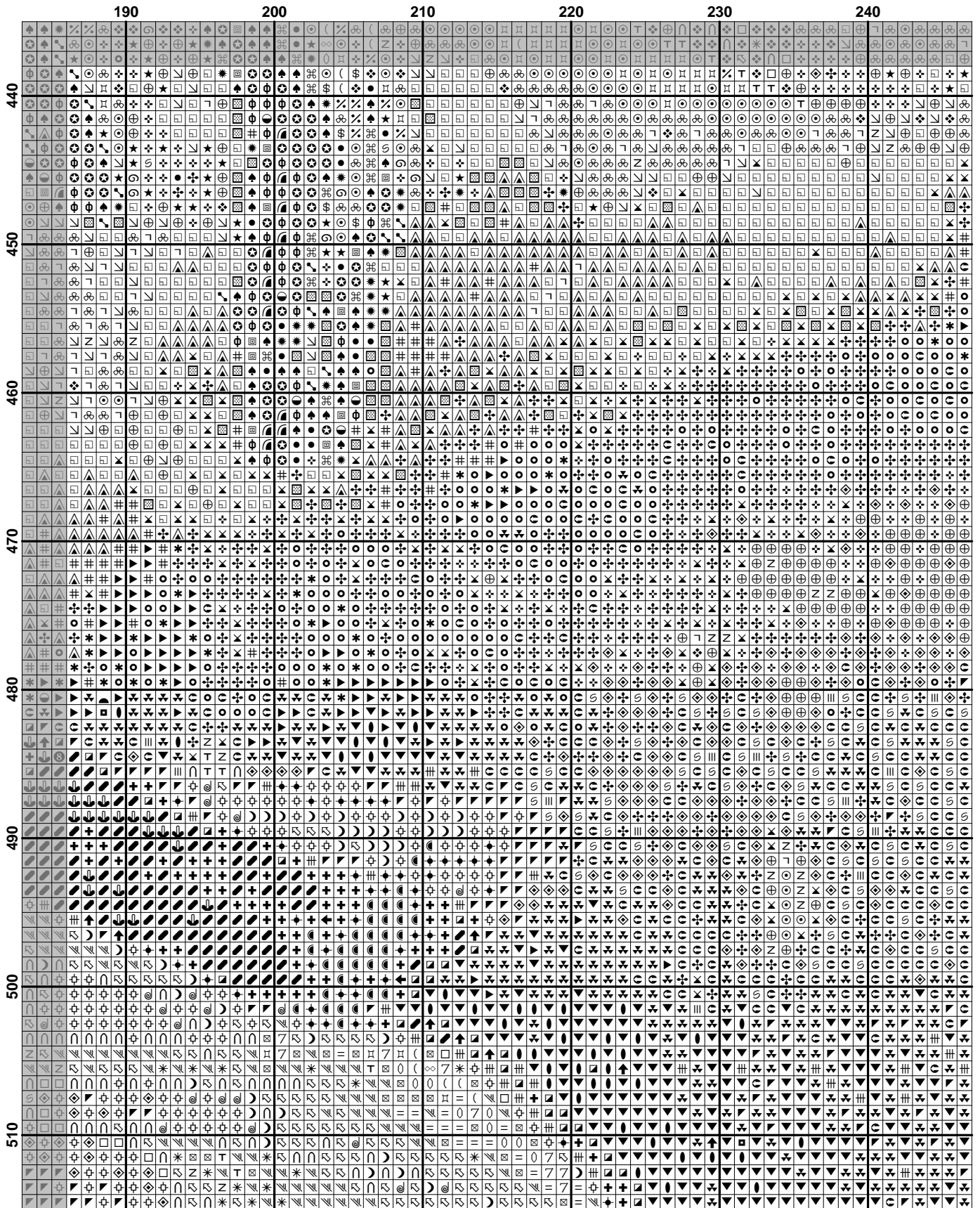


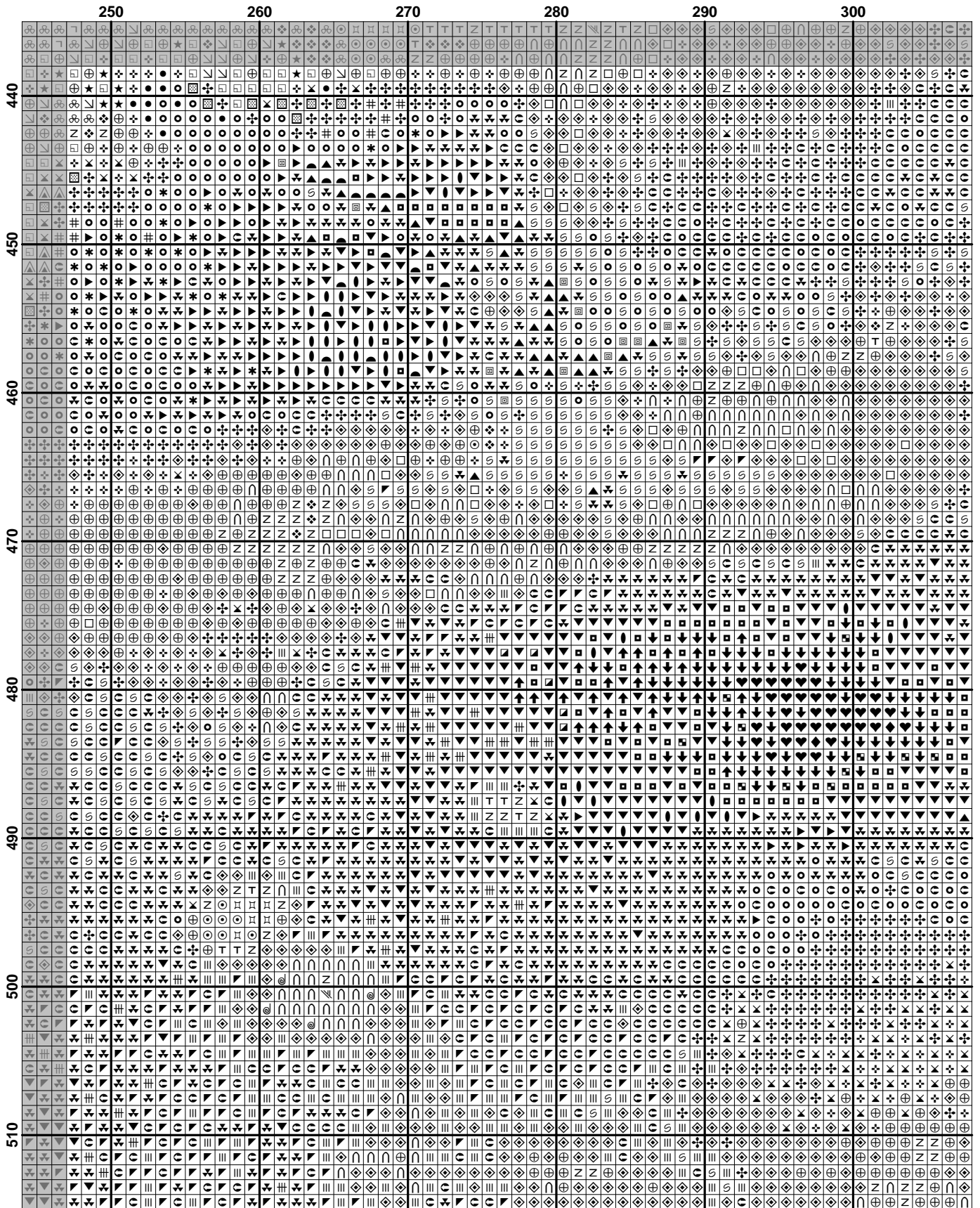


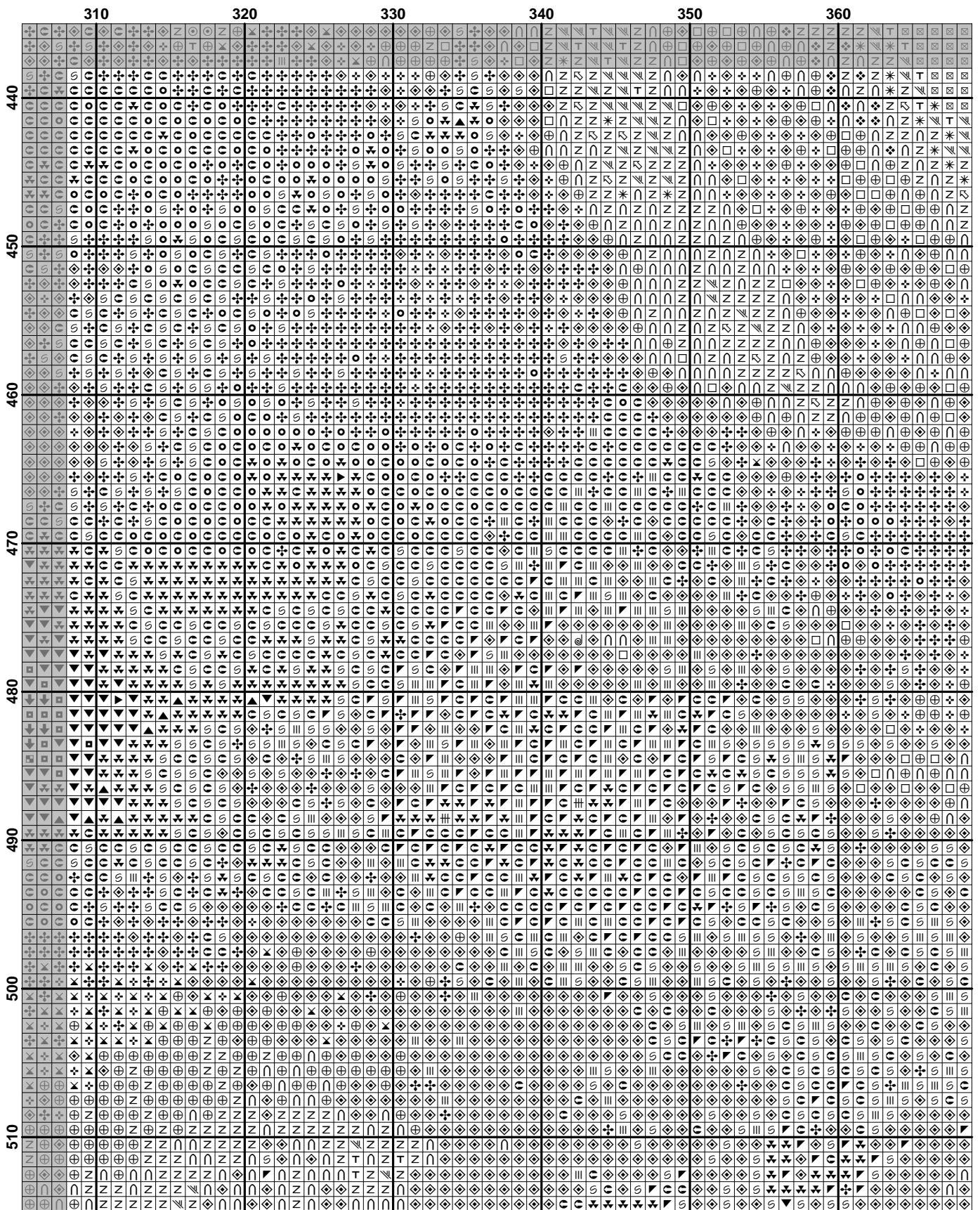












	370	380	390
440	...	...	...
450	...	...	...
460	...	...	...
470	...	...	...
480	...	...	...
490	...	...	...
500	...	...	...
510	...	...	...

**Pattern Name:** С Ангелом  
**Designed By:** Химера  
**Fabric:** Aida 14, White  
 390w X 515h Stitches  
**Size:** 14 Count, 70.76w X 93.44h cm

**Floss Used for Full Stitches:**

Symbol	Strands	Type	Number	Color
	2	DMC	032	Kreinik #4 Pearl (032)
	2	DMC	152	Shell Pink-MD LT
	2	DMC	159	Gray Blue-LT
	2	DMC	160	Gray Blue-MD
	2	DMC	161	Gray Blue
	2	DMC	169	Pewter-LT
	2	DMC	225	Shell Pink-UL VY LT
	2	DMC	310	Black
	2	DMC	315	Antique Mauve-VY DK
	2	DMC	317	Pewter Gray
	2	DMC	318	Steel Gray-LT
	2	DMC	356	Terra Cotta-MD
	2	DMC	368	Pistachio Green-LT
	2	DMC	372	Mustard-LT
	2	DMC	402	Mahogany-VY LT
	2	DMC	413	Pewter Gray-DK
	2	DMC	414	Steel Gray-DK
	2	DMC	415	Pearl Gray
	2	DMC	420	Hazelnut Brown-DK
	2	DMC	435	Brown-VY LT
	2	DMC	436	Tan
	2	DMC	445	Lemon-LT
	2	DMC	452	Shell Gray-MD
	2	DMC	471	Avocado Green-VY LT
	2	DMC	524	Fern Green-VY LT
	2	DMC	612	Drab Brown-LT
	2	DMC	613	Drab Brown-VY LT
	2	DMC	644	Beige Gray-MD
	2	DMC	645	Beaver Gray-VY DK
	2	DMC	648	Beaver Gray-LT
	2	DMC	676	Old Gold-LT
	2	DMC	729	Old Gold-MD
	2	DMC	758	Terra Cotta-VY LT
	2	DMC	760	Salmon
	2	DMC	762	Pearl Gray-VY LT
	2	DMC	779	Cocoa-DK
	2	DMC	799	Delft Blue-MD
	2	DMC	801	Coffee Brown-DK
	2	DMC	819	Baby Pink-LT
	2	DMC	823	Navy Blue-DK
	2	DMC	833	Golden Olive-LT
	2	DMC	842	Beige Brown-VY LT
	2	DMC	844	Beaver Brown-UL DK
	2	DMC	898	Coffee Brown-VY DK
	2	DMC	930	Antique Blue-DK
	2	DMC	934	Black Avocado Green
	2	DMC	936	Avocado Green-VY DK
	2	DMC	950	Desert Sand-LT
	2	DMC	951	Tawny-LT
	2	DMC	975	Golden Brown-DK
	2	DMC	3012	Khaki Green-MD
	2	DMC	3031	Mocha Brown-VY DK
	2	DMC	3033	Mocha Brown-VY LT
	2	DMC	3051	Green Gray-DK
	2	DMC	3052	Green Gray-MD
	2	DMC	3064	Desert Sand



Symbol	Strands	Type	Number	Color
		2	DMC 3072	Beaver Gray-VY LT
		2	DMC 3346	Hunter Green
		2	DMC 3348	Yellow Green-LT
		2	DMC 3364	Pine Green
		2	DMC 3371	Black Brown
		2	DMC 3721	Shell Pink-DK
		2	DMC 3740	Antique Violet-DK
		2	DMC 3743	Antique Violet-VY LT
		2	DMC 3750	Antique Blue-VY DK
		2	DMC 3756	Baby Blue-UL VY LT
		2	DMC 3770	Tawny-VY LT
		2	DMC 3772	Desert Sand-VY DK
		2	DMC 3778	Terra Cotta-LT
		2	DMC 3779	Terra Cotta-UL VY LT
		2	DMC 3787	Brown Gray-DK
		2	DMC 3799	Pewter Gray-VY DK
		2	DMC 3809	Turquoise-VY DK
		2	DMC 3813	Blue Green-LT
		2	DMC 3835	Grape-MD
		2	DMC 3836	Grape-LT
		2	DMC 3856	Mahogany-UL VY LT
		2	DMC 3858	Rosewood-MD
		2	DMC 3860	Cocoa
		2	DMC 3861	Cocoa-LT
		2	DMC 3862	Mocha Beige-DK
		2	DMC 3864	Mocha Beige-LT
		2	DMC 3865	Winter White
		1	DMC 819	Baby Pink-LT
		1	DMC 3865	Winter White
		1	DMC 356	Terra Cotta-MD
		1	DMC 436	Tan
		1	DMC 823	Navy Blue-DK
		1	DMC 3799	Pewter Gray-VY DK
		1	DMC 415	Pearl Gray
		1	DMC 3072	Beaver Gray-VY LT
		1	DMC 758	Terra Cotta-VY LT
		1	DMC 3778	Terra Cotta-LT
		1	DMC 898	Coffee Brown-VY DK
		1	DMC 3371	Black Brown

## Usage Summary

Нитей на моток: 6

Длина мотка: 795.0 cm

Type	Number	Full	Half	Quarter	Petite	Back(cm)	Str(cm)	Spec(cm)	French	Bead	Skein Est.
DMC	032	140	0	0	0	0.0	0.0	0.0	0	0	1.000
DMC	152	845	0	0	0	0.0	0.0	0.0	0	0	1.000
DMC	159	149	0	0	0	0.0	0.0	0.0	0	0	1.000
DMC	160	269	0	0	0	0.0	0.0	0.0	0	0	1.000
DMC	161	433	0	0	0	0.0	0.0	0.0	0	0	1.000
DMC	169	2420	0	0	0	0.0	0.0	0.0	0	0	2.000
DMC	225	7081	0	0	0	0.0	0.0	0.0	0	0	4.000
DMC	310	9427	0	0	0	0.0	0.0	0.0	0	0	5.000
DMC	315	110	0	0	0	0.0	0.0	0.0	0	0	1.000
DMC	317	1653	0	0	0	0.0	0.0	0.0	0	0	1.000
DMC	318	1236	0	0	0	0.0	0.0	0.0	0	0	1.000
DMC	356	468	0	0	0	0.0	0.0	0.0	0	0	1.000
DMC	368	821	0	0	0	0.0	0.0	0.0	0	0	1.000
DMC	372	3142	0	0	0	0.0	0.0	0.0	0	0	2.000
DMC	402	125	0	0	0	0.0	0.0	0.0	0	0	1.000
DMC	413	1298	0	0	0	0.0	0.0	0.0	0	0	1.000
DMC	414	1832	0	0	0	0.0	0.0	0.0	0	0	1.000
DMC	415	1084	0	0	0	0.0	0.0	0.0	0	0	1.000
DMC	420	156	0	0	0	0.0	0.0	0.0	0	0	1.000
DMC	435	393	0	0	0	0.0	0.0	0.0	0	0	1.000
DMC	436	357	0	0	0	0.0	0.0	0.0	0	0	1.000
DMC	445	162	0	0	0	0.0	0.0	0.0	0	0	1.000
DMC	452	2676	0	0	0	0.0	0.0	0.0	0	0	2.000
DMC	471	212	0	0	0	0.0	0.0	0.0	0	0	1.000
DMC	524	8081	0	0	0	0.0	0.0	0.0	0	0	4.000
DMC	612	1348	0	0	0	0.0	0.0	0.0	0	0	1.000
DMC	613	4457	0	0	0	0.0	0.0	0.0	0	0	2.000
DMC	644	6408	0	0	0	0.0	0.0	0.0	0	0	3.000
DMC	645	1558	0	0	0	0.0	0.0	0.0	0	0	1.000
DMC	648	5803	0	0	0	0.0	0.0	0.0	0	0	3.000
DMC	676	965	0	0	0	0.0	0.0	0.0	0	0	1.000
DMC	729	344	0	0	0	0.0	0.0	0.0	0	0	1.000
DMC	758	1469	0	0	0	0.0	0.0	0.0	0	0	1.000
DMC	760	41	0	0	0	0.0	0.0	0.0	0	0	1.000
DMC	762	2475	0	0	0	0.0	0.0	0.0	0	0	2.000
DMC	779	1398	0	0	0	0.0	0.0	0.0	0	0	1.000
DMC	799	38	0	0	0	0.0	0.0	0.0	0	0	1.000
DMC	801	369	0	0	0	0.0	0.0	0.0	0	0	1.000
DMC	819	8237	0	0	0	0.0	0.0	0.0	0	0	4.000
DMC	823	1975	0	0	0	0.0	0.0	0.0	0	0	1.000
DMC	833	119	0	0	0	0.0	0.0	0.0	0	0	1.000
DMC	842	3898	0	0	0	0.0	0.0	0.0	0	0	2.000
DMC	844	853	0	0	0	0.0	0.0	0.0	0	0	1.000
DMC	898	453	0	0	0	0.0	0.0	0.0	0	0	1.000
DMC	930	1097	0	0	0	0.0	0.0	0.0	0	0	1.000
DMC	934	713	0	0	0	0.0	0.0	0.0	0	0	1.000
DMC	936	323	0	0	0	0.0	0.0	0.0	0	0	1.000
DMC	950	4152	0	0	0	0.0	0.0	0.0	0	0	2.000
DMC	951	4461	0	0	0	0.0	0.0	0.0	0	0	2.000
DMC	975	303	0	0	0	0.0	0.0	0.0	0	0	1.000
DMC	3012	660	0	0	0	0.0	0.0	0.0	0	0	1.000
DMC	3031	1175	0	0	0	0.0	0.0	0.0	0	0	1.000
DMC	3033	9158	0	0	0	0.0	0.0	0.0	0	0	4.000
DMC	3051	409	0	0	0	0.0	0.0	0.0	0	0	1.000
DMC	3052	2857	0	0	0	0.0	0.0	0.0	0	0	2.000
DMC	3064	1246	0	0	0	0.0	0.0	0.0	0	0	1.000
DMC	3072	6219	0	0	0	0.0	0.0	0.0	0	0	3.000
DMC	3346	263	0	0	0	0.0	0.0	0.0	0	0	1.000

