

XUMEDA

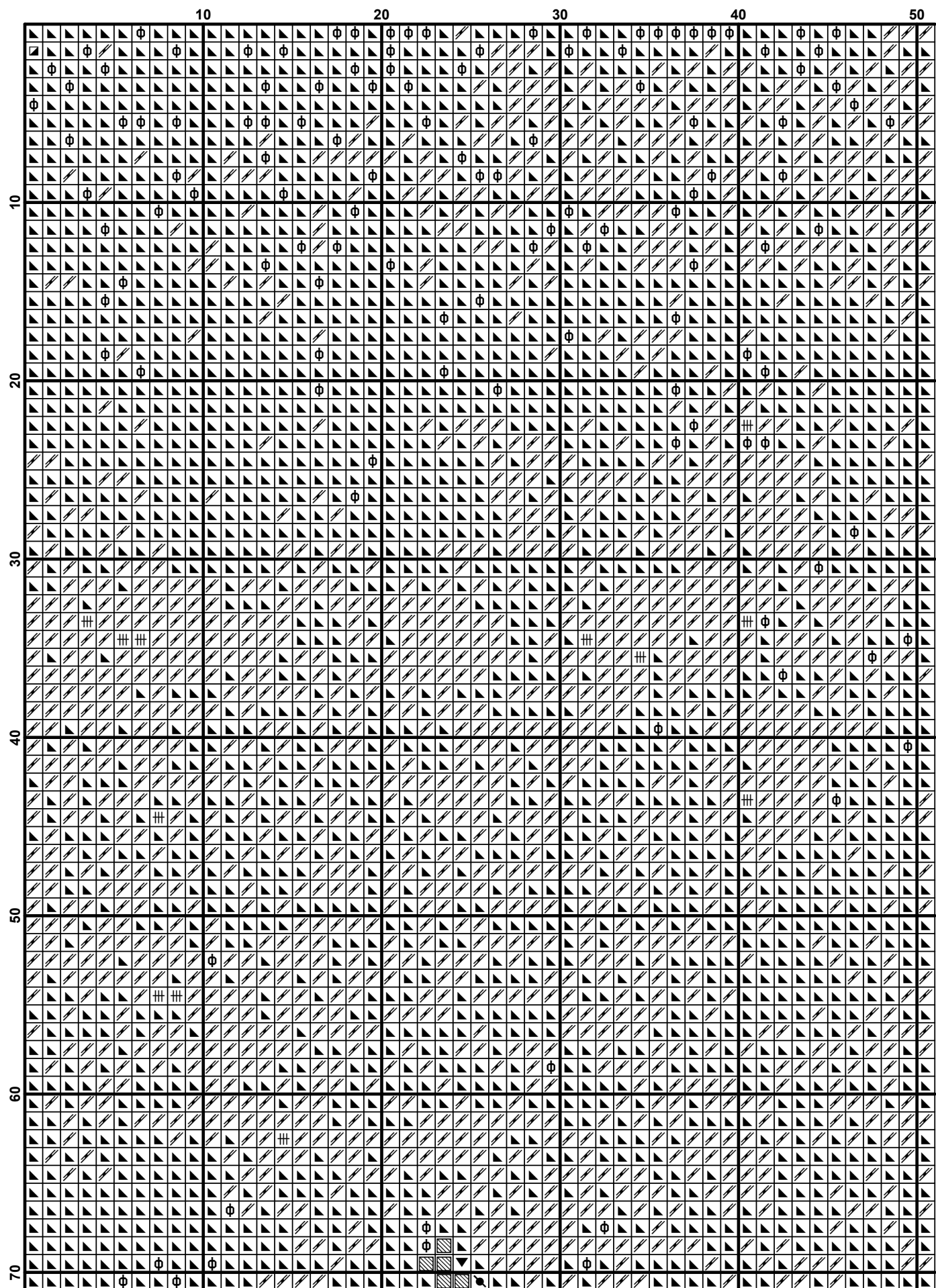
По картине художника Лидия Давыдова

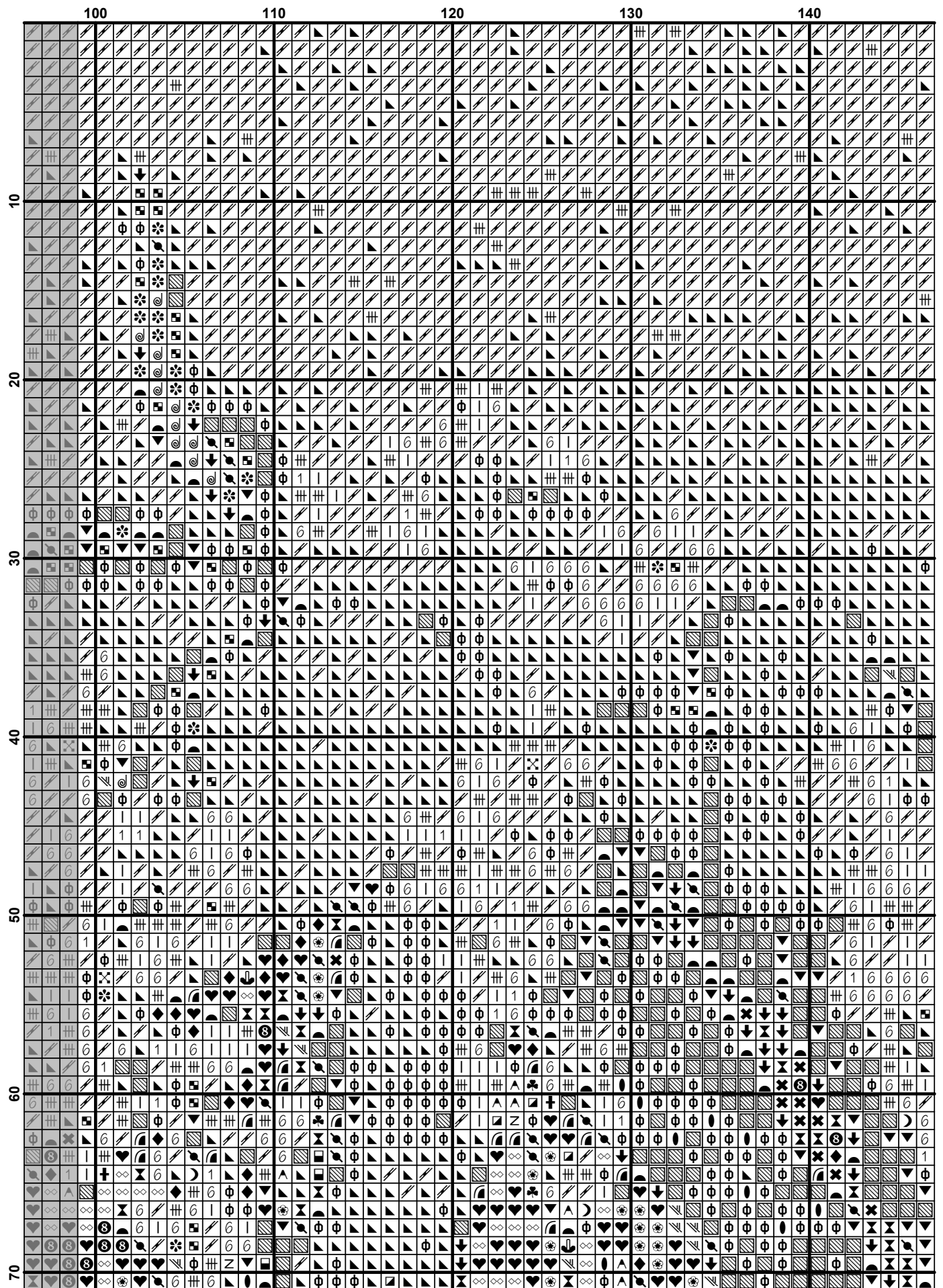
"Аромат рерёмухи"

Finished Design Size 360w X 350h Stitches

2016 г.

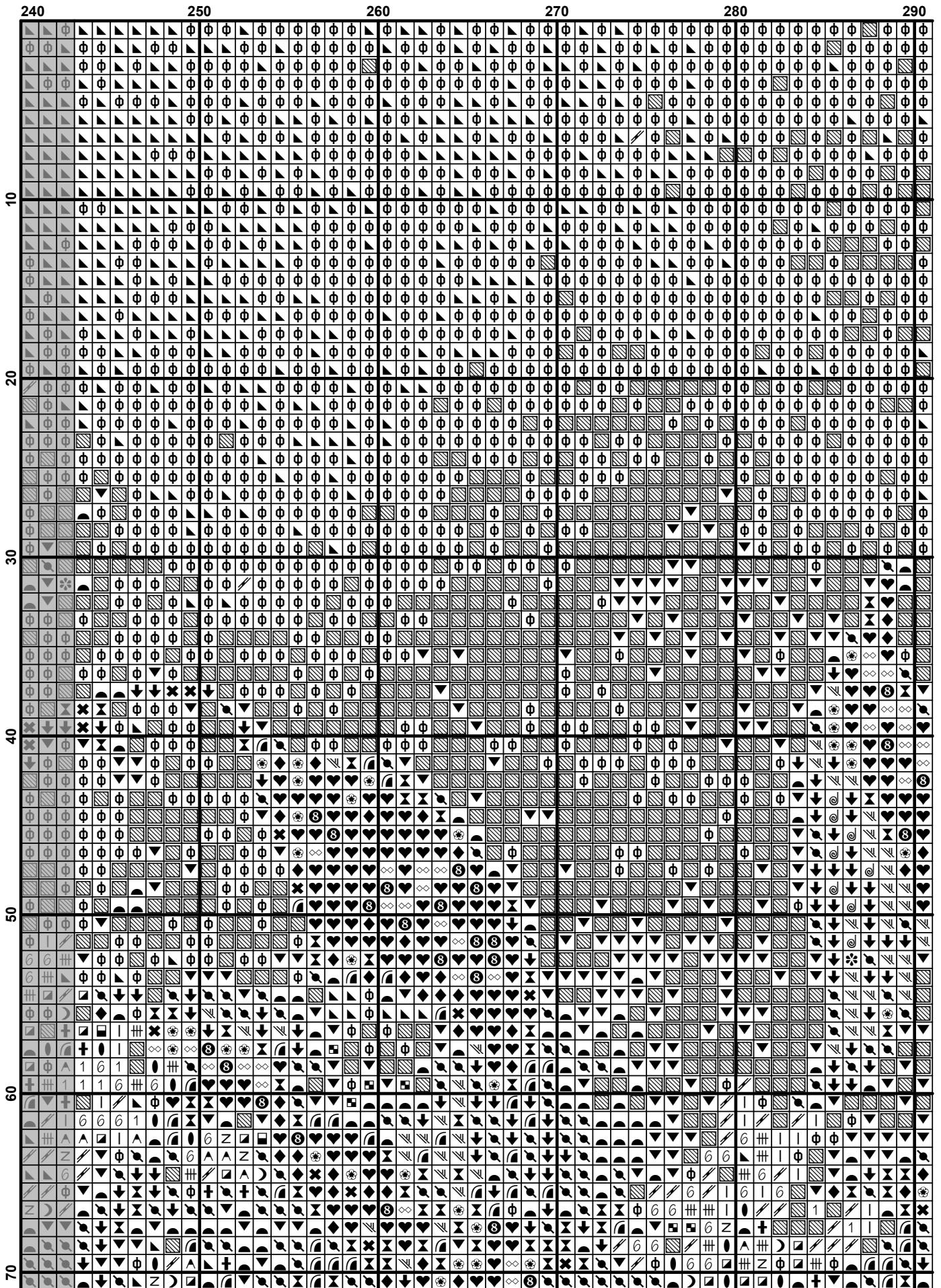


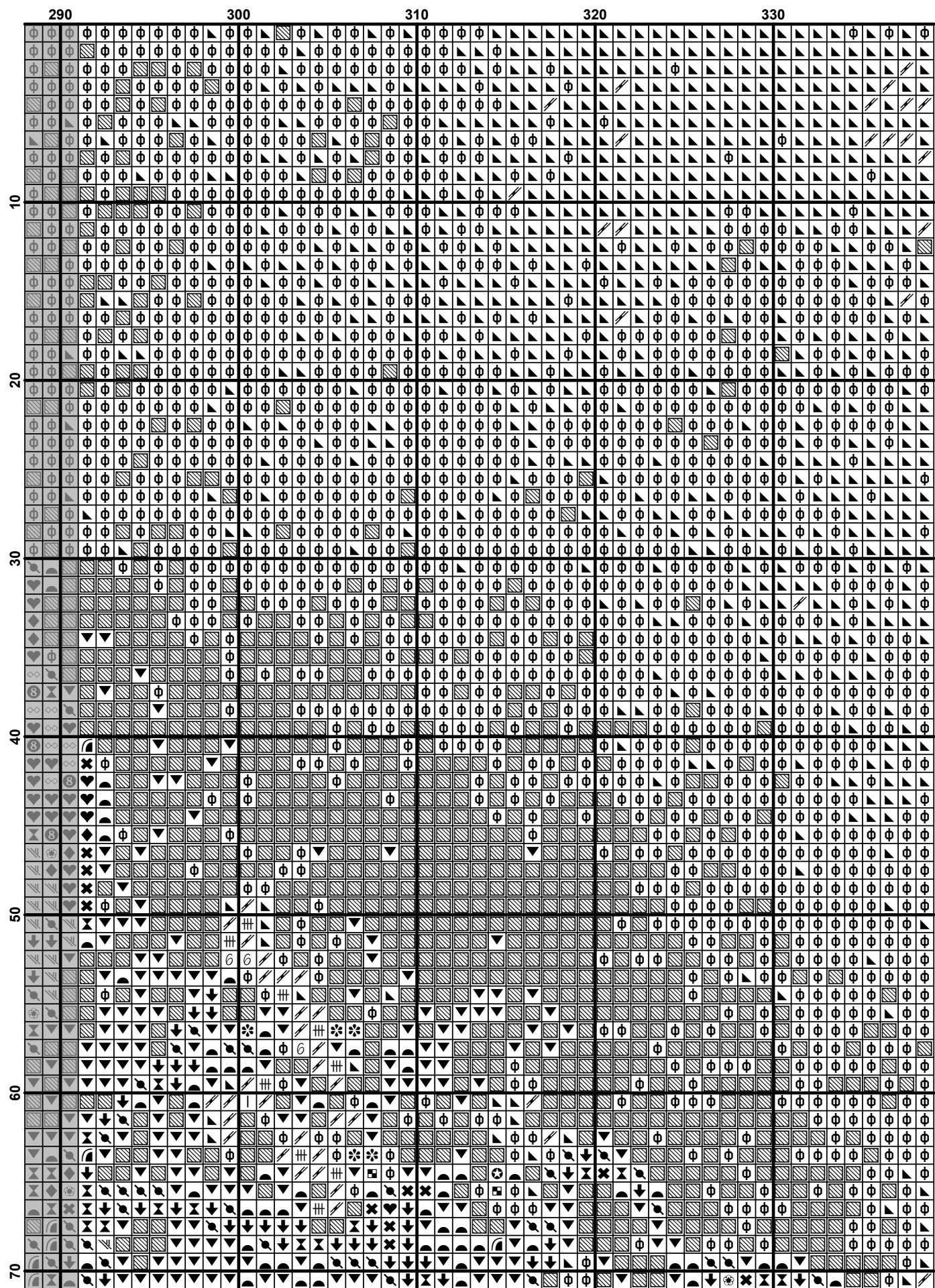


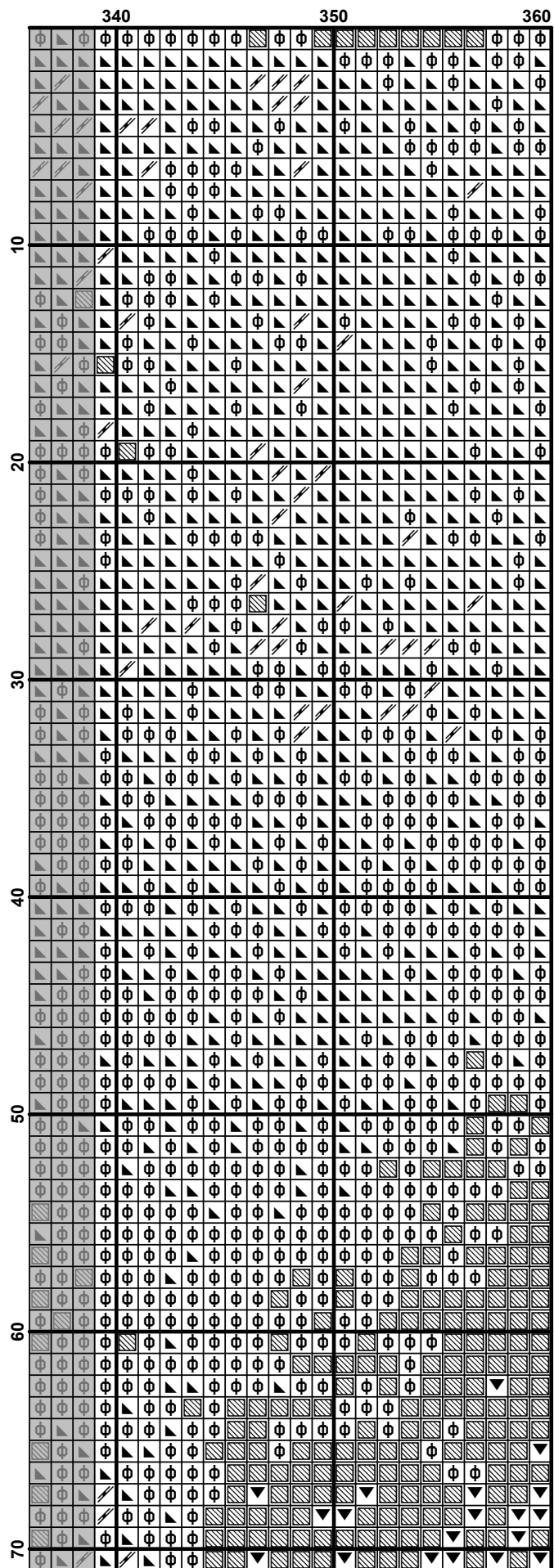


	150	160	170	180	190
10
20
30
40
50
60
70

	200	210	220	230	240
10
20
30
40
50
60
70





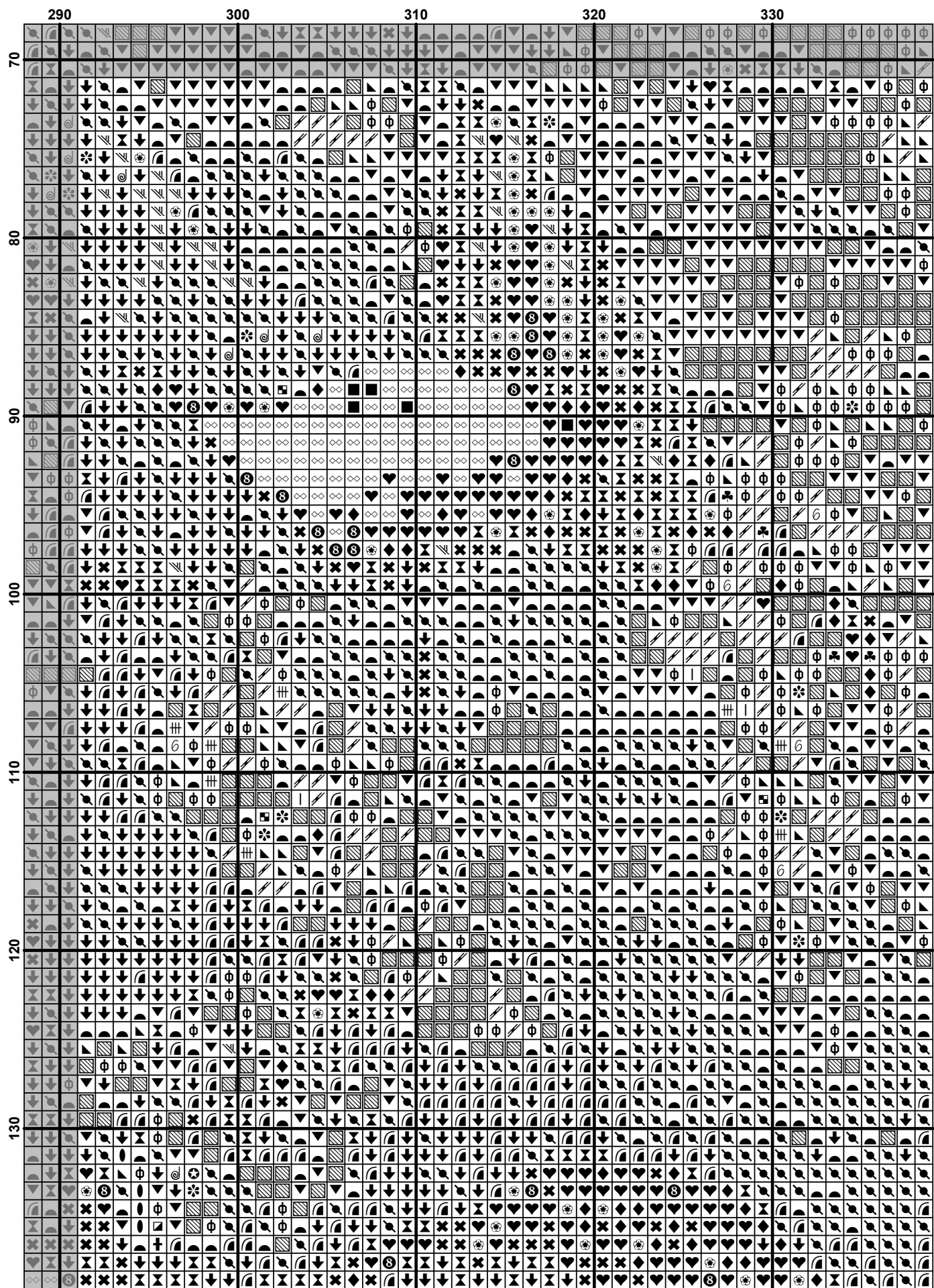


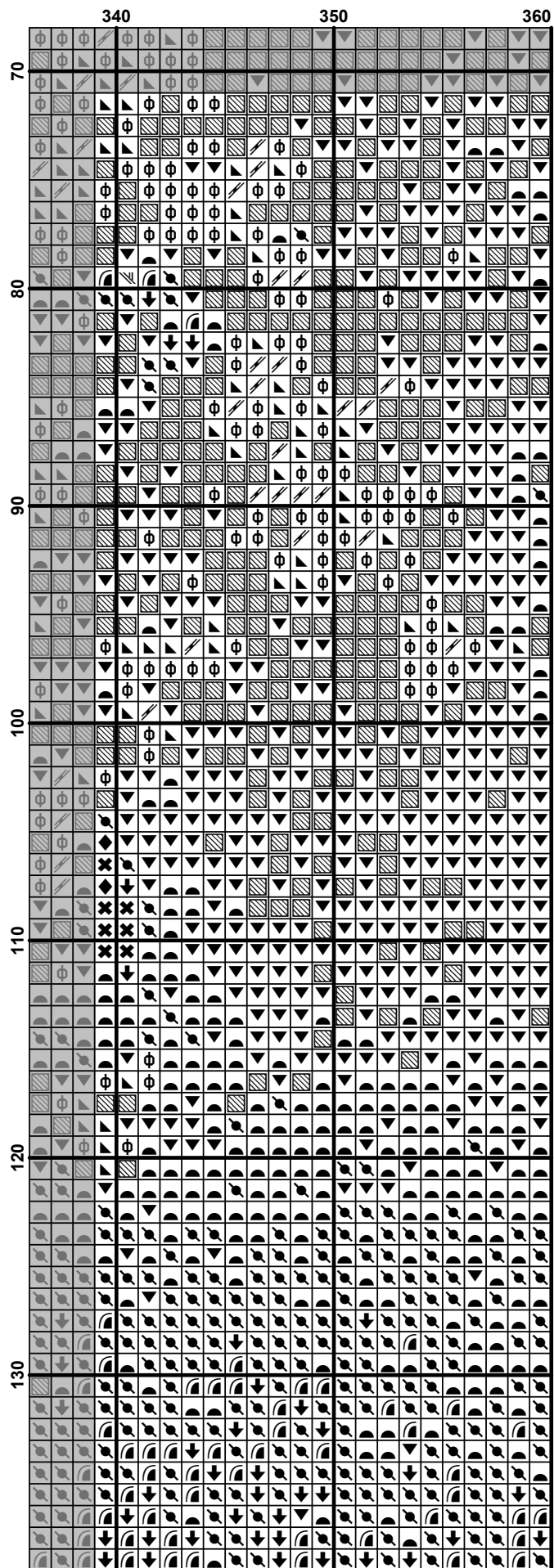
	100	110	120	130	140
70
80
90
100
110
120
130

	150	160	170	180	190
70
80
90
100
110
120
130

	200	210	220	230	240
70
80
90
100
110
120
130

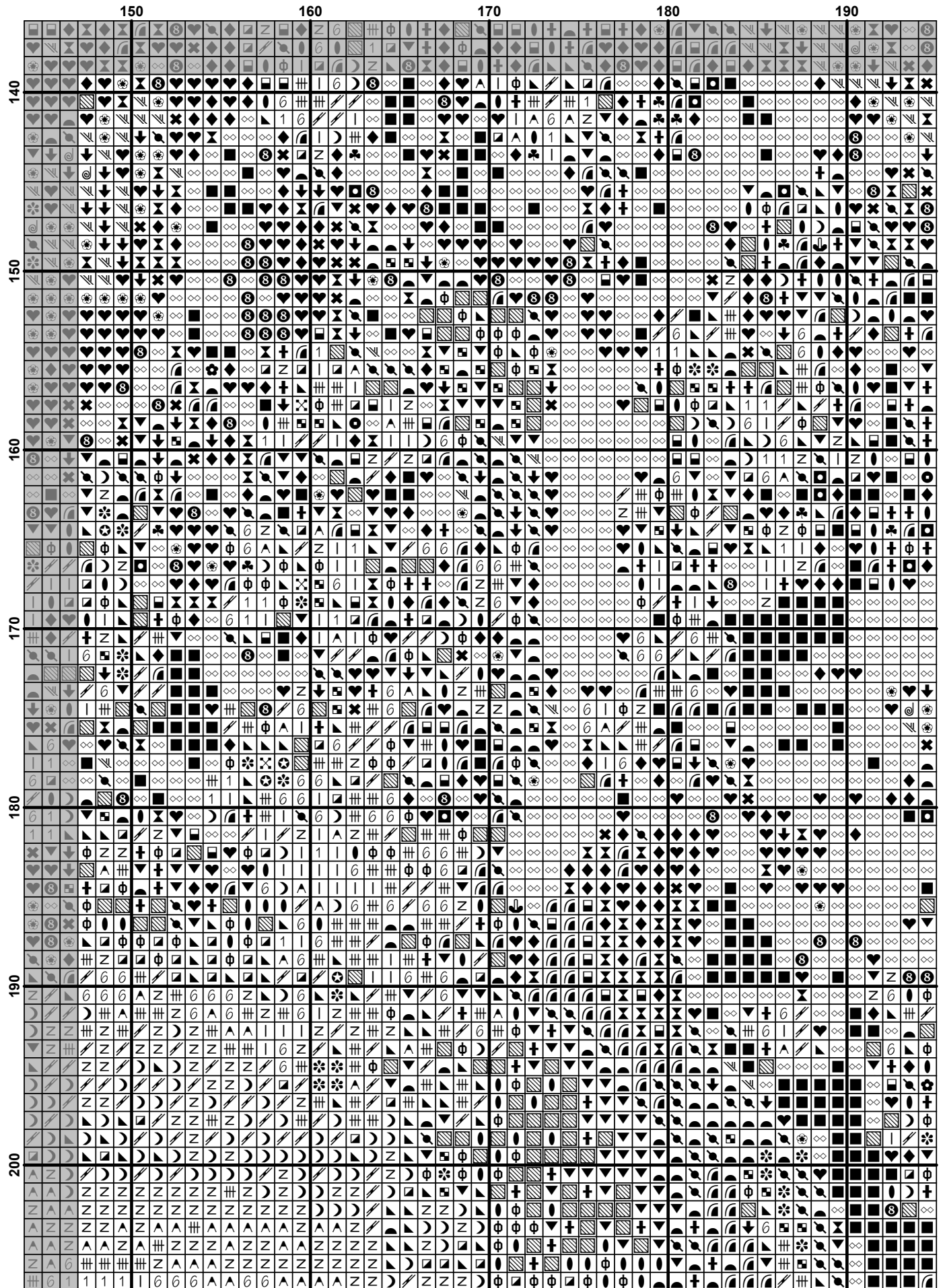
	240	250	260	270	280	290
70						
80						
90						
100						
110						
120						
130						





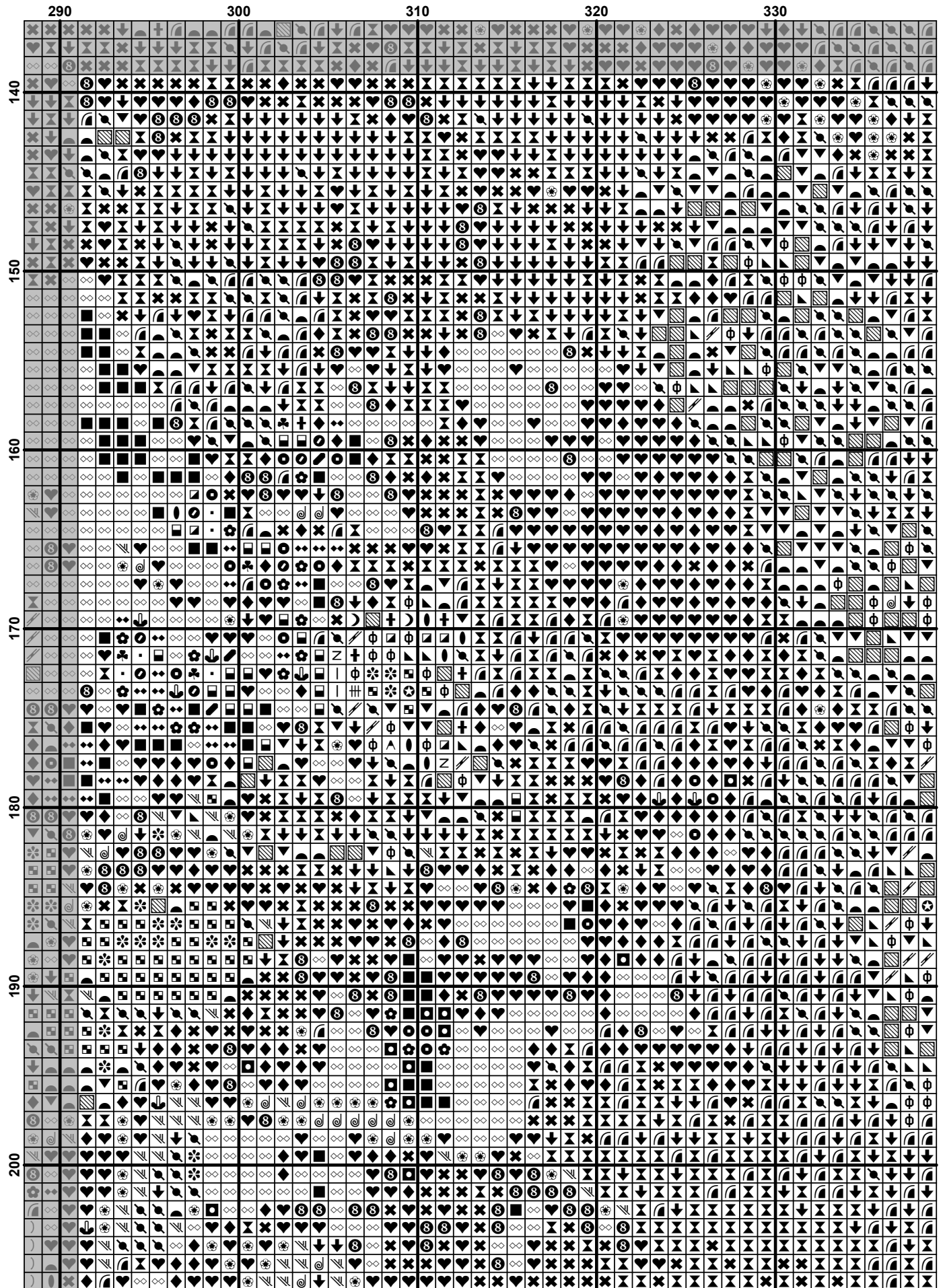
	10	20	30	40	50
140	Φ	Φ	Φ	Φ	Φ
141	Φ	Φ	Φ	Φ	Φ
142	Φ	Φ	Φ	Φ	Φ
143	Φ	Φ	Φ	Φ	Φ
144	Φ	Φ	Φ	Φ	Φ
145	Φ	Φ	Φ	Φ	Φ
146	Φ	Φ	Φ	Φ	Φ
147	Φ	Φ	Φ	Φ	Φ
148	Φ	Φ	Φ	Φ	Φ
149	Φ	Φ	Φ	Φ	Φ
150	Φ	Φ	Φ	Φ	Φ
151	Φ	Φ	Φ	Φ	Φ
152	Φ	Φ	Φ	Φ	Φ
153	Φ	Φ	Φ	Φ	Φ
154	Φ	Φ	Φ	Φ	Φ
155	Φ	Φ	Φ	Φ	Φ
156	Φ	Φ	Φ	Φ	Φ
157	Φ	Φ	Φ	Φ	Φ
158	Φ	Φ	Φ	Φ	Φ
159	Φ	Φ	Φ	Φ	Φ
160	Φ	Φ	Φ	Φ	Φ
161	Φ	Φ	Φ	Φ	Φ
162	Φ	Φ	Φ	Φ	Φ
163	Φ	Φ	Φ	Φ	Φ
164	Φ	Φ	Φ	Φ	Φ
165	Φ	Φ	Φ	Φ	Φ
166	Φ	Φ	Φ	Φ	Φ
167	Φ	Φ	Φ	Φ	Φ
168	Φ	Φ	Φ	Φ	Φ
169	Φ	Φ	Φ	Φ	Φ
170	Φ	Φ	Φ	Φ	Φ
171	Φ	Φ	Φ	Φ	Φ
172	Φ	Φ	Φ	Φ	Φ
173	Φ	Φ	Φ	Φ	Φ
174	Φ	Φ	Φ	Φ	Φ
175	Φ	Φ	Φ	Φ	Φ
176	Φ	Φ	Φ	Φ	Φ
177	Φ	Φ	Φ	Φ	Φ
178	Φ	Φ	Φ	Φ	Φ
179	Φ	Φ	Φ	Φ	Φ
180	Φ	Φ	Φ	Φ	Φ
181	Φ	Φ	Φ	Φ	Φ
182	Φ	Φ	Φ	Φ	Φ
183	Φ	Φ	Φ	Φ	Φ
184	Φ	Φ	Φ	Φ	Φ
185	Φ	Φ	Φ	Φ	Φ
186	Φ	Φ	Φ	Φ	Φ
187	Φ	Φ	Φ	Φ	Φ
188	Φ	Φ	Φ	Φ	Φ
189	Φ	Φ	Φ	Φ	Φ
190	Φ	Φ	Φ	Φ	Φ
191	Φ	Φ	Φ	Φ	Φ
192	Φ	Φ	Φ	Φ	Φ
193	Φ	Φ	Φ	Φ	Φ
194	Φ	Φ	Φ	Φ	Φ
195	Φ	Φ	Φ	Φ	Φ
196	Φ	Φ	Φ	Φ	Φ
197	Φ	Φ	Φ	Φ	Φ
198	Φ	Φ	Φ	Φ	Φ
199	Φ	Φ	Φ	Φ	Φ
200	Φ	Φ	Φ	Φ	Φ

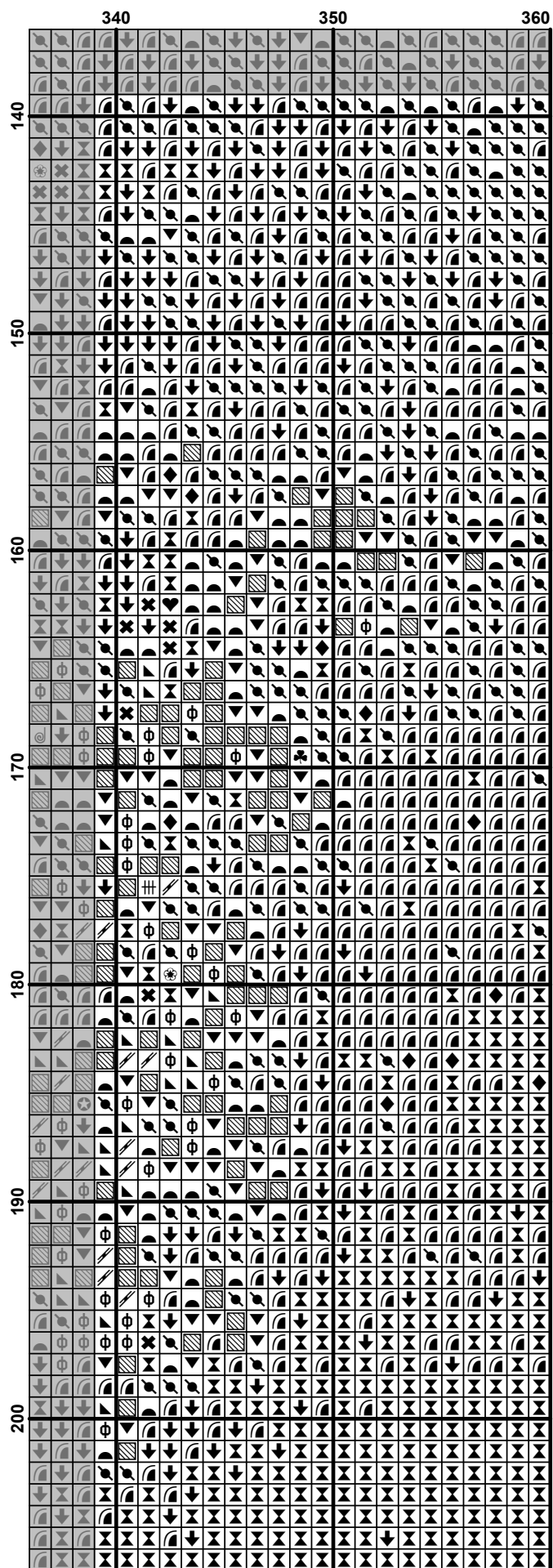
	100	110	120	130	140
140
150
160
170
180
190
200

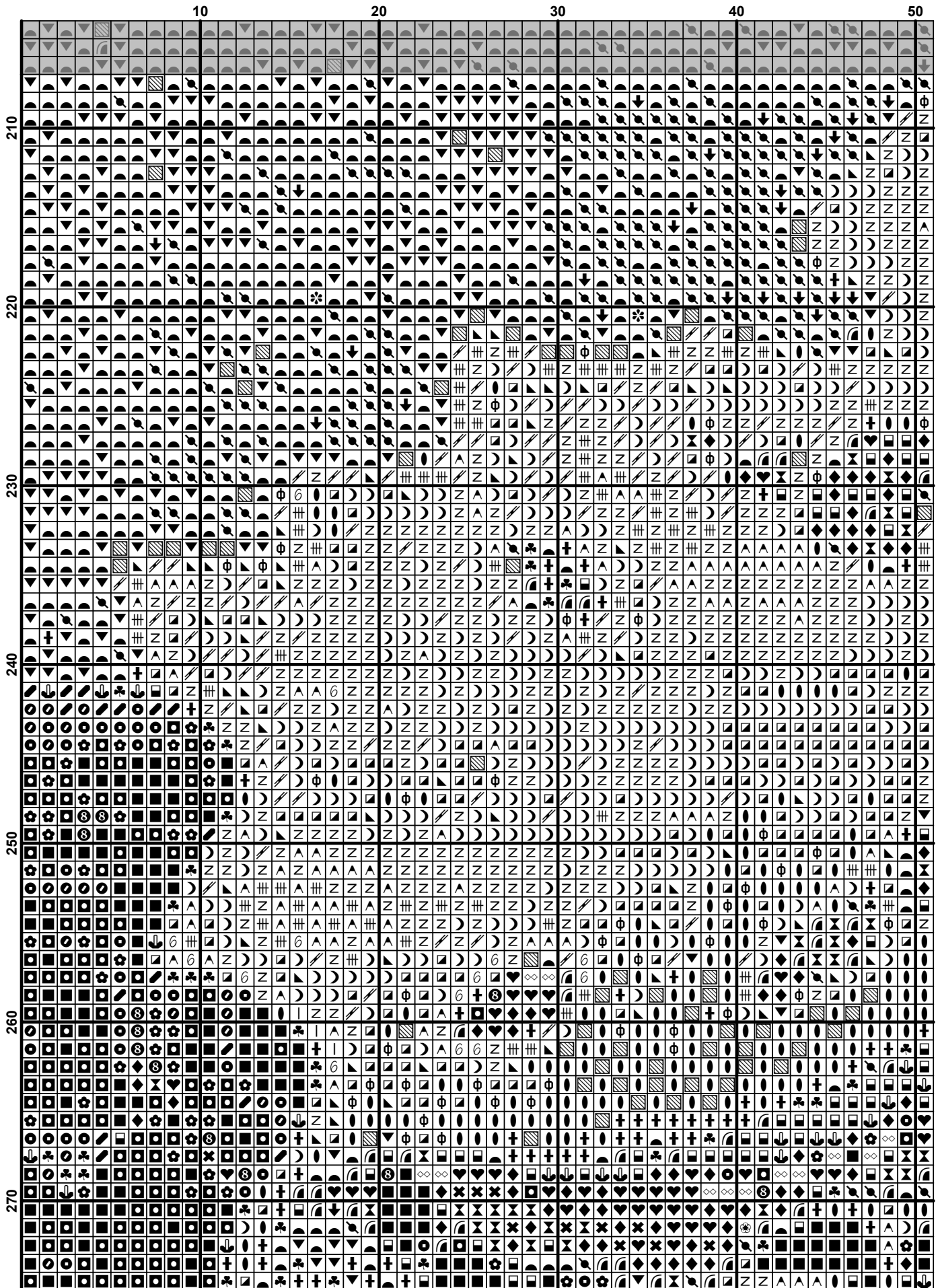


	200	210	220	230	240
140
150
160
170
180
190
200

	240	250	260	270	280	290
140
150
160
170
180
190
200





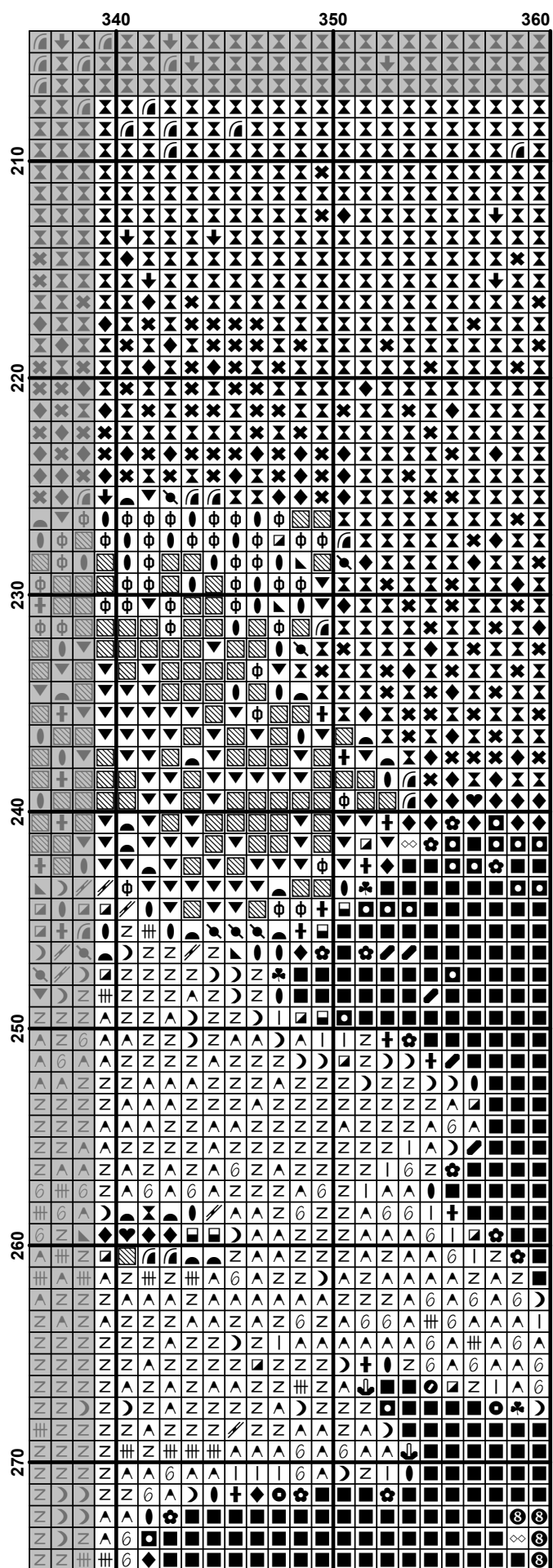


	50	60	70	80	90
210
220
230
240
250
260
270

	200	210	220	230	240
210
220
230
240
250
260
270

	240	250	260	270	280	290
210
220
230
240
250
260
270

	290	300	310	320	330
210
220
230
240
250
260
270



	10	20	30	40	50
280
290
300
310
320
330
340

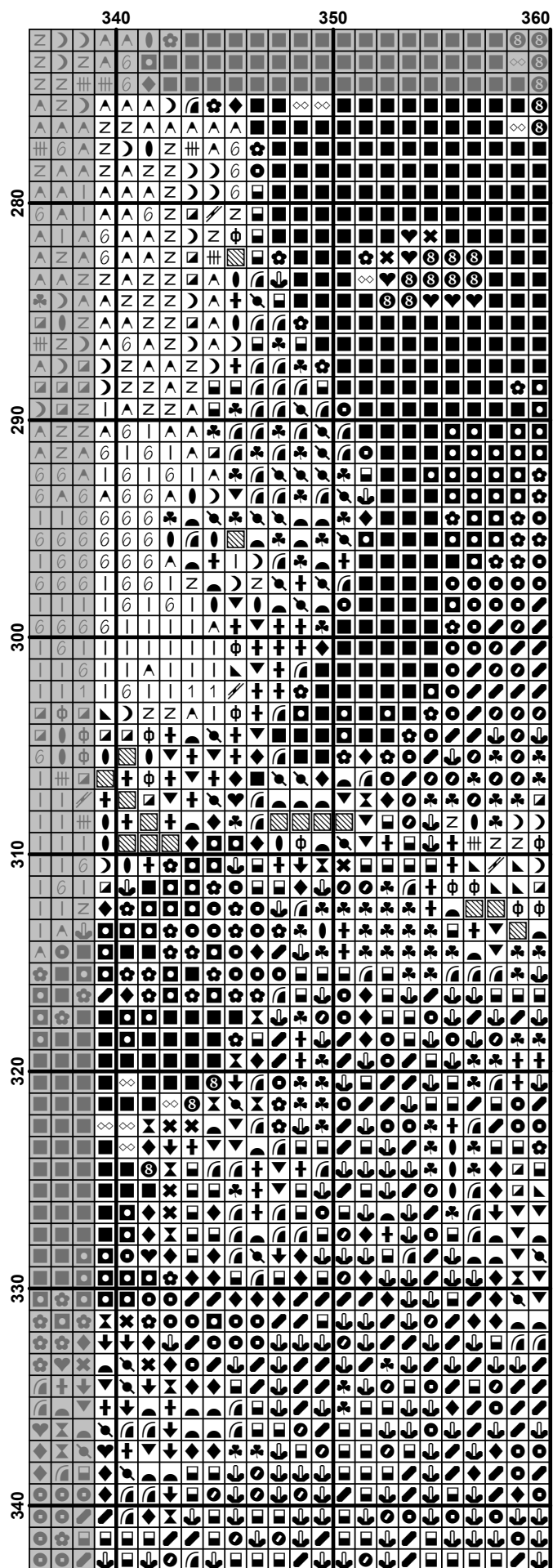
	50	60	70	80	90
280	▲	▲	▲	▲	▲
281	▲	▲	▲	▲	▲
282	▲	▲	▲	▲	▲
283	▲	▲	▲	▲	▲
284	▲	▲	▲	▲	▲
285	▲	▲	▲	▲	▲
286	▲	▲	▲	▲	▲
287	▲	▲	▲	▲	▲
288	▲	▲	▲	▲	▲
289	▲	▲	▲	▲	▲
290	▲	▲	▲	▲	▲
291	▲	▲	▲	▲	▲
292	▲	▲	▲	▲	▲
293	▲	▲	▲	▲	▲
294	▲	▲	▲	▲	▲
295	▲	▲	▲	▲	▲
296	▲	▲	▲	▲	▲
297	▲	▲	▲	▲	▲
298	▲	▲	▲	▲	▲
299	▲	▲	▲	▲	▲
300	▲	▲	▲	▲	▲
301	▲	▲	▲	▲	▲
302	▲	▲	▲	▲	▲
303	▲	▲	▲	▲	▲
304	▲	▲	▲	▲	▲
305	▲	▲	▲	▲	▲
306	▲	▲	▲	▲	▲
307	▲	▲	▲	▲	▲
308	▲	▲	▲	▲	▲
309	▲	▲	▲	▲	▲
310	▲	▲	▲	▲	▲
311	▲	▲	▲	▲	▲
312	▲	▲	▲	▲	▲
313	▲	▲	▲	▲	▲
314	▲	▲	▲	▲	▲
315	▲	▲	▲	▲	▲
316	▲	▲	▲	▲	▲
317	▲	▲	▲	▲	▲
318	▲	▲	▲	▲	▲
319	▲	▲	▲	▲	▲
320	▲	▲	▲	▲	▲
321	▲	▲	▲	▲	▲
322	▲	▲	▲	▲	▲
323	▲	▲	▲	▲	▲
324	▲	▲	▲	▲	▲
325	▲	▲	▲	▲	▲
326	▲	▲	▲	▲	▲
327	▲	▲	▲	▲	▲
328	▲	▲	▲	▲	▲
329	▲	▲	▲	▲	▲
330	▲	▲	▲	▲	▲
331	▲	▲	▲	▲	▲
332	▲	▲	▲	▲	▲
333	▲	▲	▲	▲	▲
334	▲	▲	▲	▲	▲
335	▲	▲	▲	▲	▲
336	▲	▲	▲	▲	▲
337	▲	▲	▲	▲	▲
338	▲	▲	▲	▲	▲
339	▲	▲	▲	▲	▲
340	▲	▲	▲	▲	▲

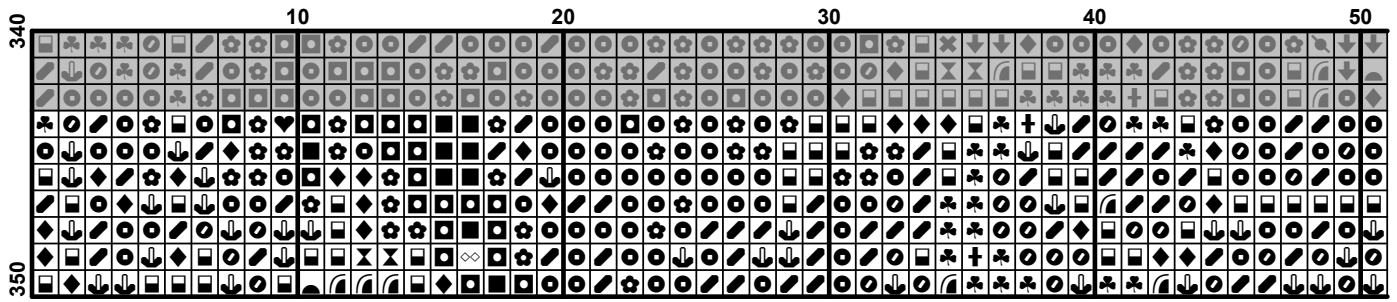
	100	110	120	130	140
280
290
300
310
320
330
340

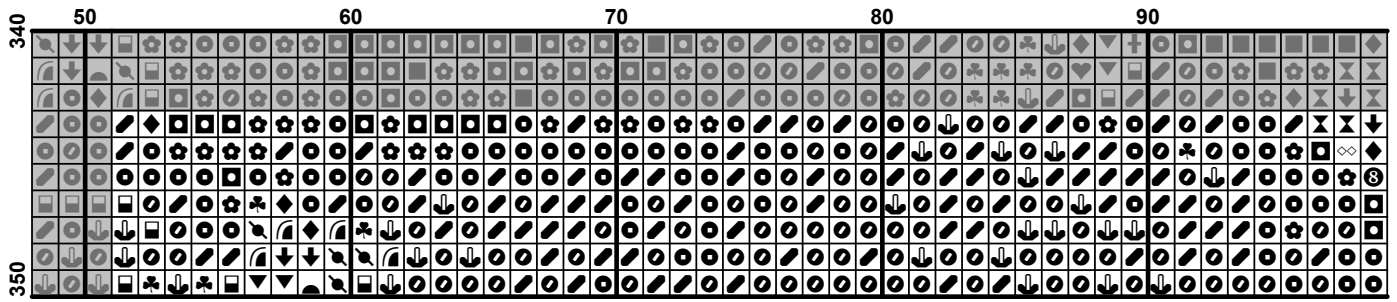
	150	160	170	180	190
280
290
300
310
320
330
340

	240	250	260	270	280	290
280
290
300
310
320
330
340

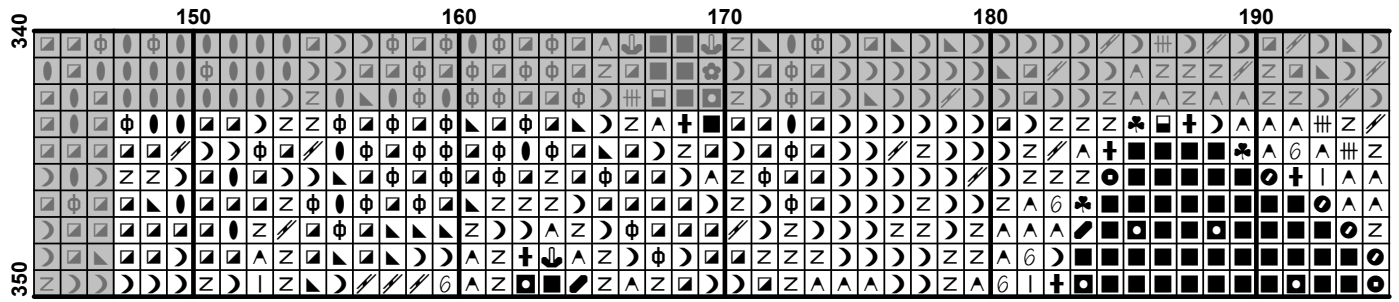
	290	300	310	320	330
280
290
300
310
320
330
340



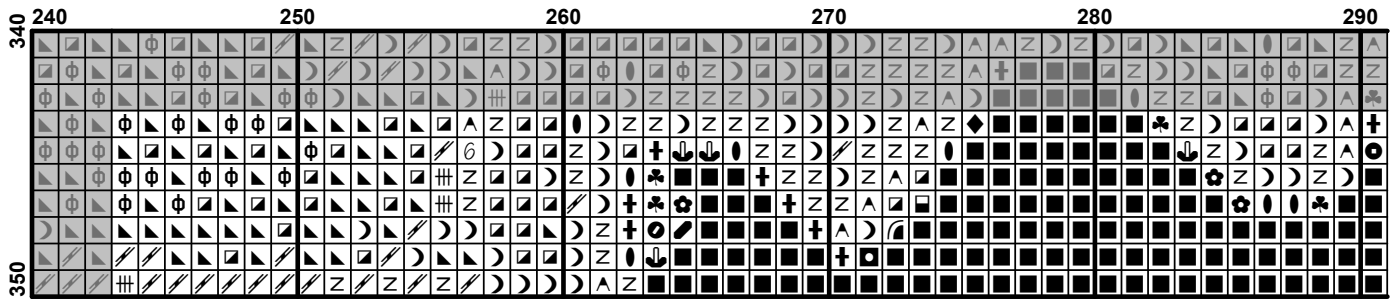




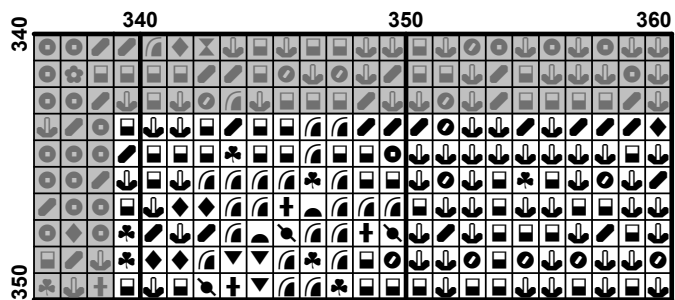
	100	110	120	130	140
340					
350					



	200										210										220										230										240																																																											
340	[Grid of symbols for row 340]																																																																																																			
350	[Grid of symbols for row 350]																																																																																																			



	290		300		310		320		330
340									
350									



Pattern Name: "Аромат черёмухи"

Designed By: Лидия Даценко

Company: ХИМЕРА

Fabric: Aida 18, White

360w X 350h Stitches

Size(s): 18 Count, 50.80w X 49.39h cm











16 Count, 57.15w X 55.56h cm

14 Count, 65.31w X 63.50h cm

25 Count, 36.58w X 35.56h cm

Floss Used for Full Stitches:

Symbol	Strands	Type	Number	Color
∞	2	DMC	310	Black
\$	2	DMC	316	Antique Mauve-MD
▣	2	DMC	318	Steel Gray-LT
▣	2	DMC	413	Pewter Gray-DK
†	2	DMC	414	Steel Gray-DK
Z	2	DMC	415	Pearl Gray
)	2	DMC	554	Violet-LT
@	2	DMC	580	Moss Green-DK
↘	2	DMC	645	Beaver Gray-VY DK
▼	2	DMC	646	Beaver Gray-DK
⊕	2	DMC	647	Beaver Gray-MD
↗	2	DMC	648	Beaver Gray-LT
	2	DMC	762	Pearl Gray-VY LT
↑	2	DMC	798	Delft Blue-DK
⊙	2	DMC	803	Baby Blue-UL VY DK
⊙	2	DMC	823	Navy Blue-DK
·	2	DMC	824	Blue-VY DK
⊗	2	DMC	844	Beaver Brown-UL DK
↶	2	DMC	924	Gray Green--VY DK
▲	2	DMC	928	Gray Green-VY LT
♥	2	DMC	934	Avocado Green-VY DK
⊗	2	DMC	936	Avocado Green-DK MD
↘	2	DMC	937	Avocado Green-MD
■	2	DMC	939	Navy Blue-VY DK
⊗	2	DMC	3012	Khaki Green-MD
⊗	2	DMC	3021	Beige Gray-VY VY DK
6	2	DMC	3072	Beaver Gray-VY LT
▣	2	DMC	3364	Pine Green
⊙	2	DMC	3371	Black Brown
↶	2	DMC	3750	Antique Blue-VY DK
1	2	DMC	3756	Baby Blue-UL VY LT
♣	2	DMC	3768	Gray Green-DK
↓	2	DMC	3787	Beige Gray-VY DK
◆	2	DMC	3799	Pewter Gray-VY DK
⊗	2	DMC	3820	Straw-DK
⊗	2	DMC	3829	Old Gold-VY DK
#	2	DMC	3835	Grape-MD
★	2	DMC	3836	Grape-LT
●	1	DMC	414	Steel Gray-DK
●	1	DMC	318	Steel Gray-LT
●	1	DMC	823	Navy Blue-DK
●	1	DMC	3750	Antique Blue-VY DK
●	1	DMC	318	Steel Gray-LT
●	1	DMC	415	Pearl Gray
#	1	DMC	648	Beaver Gray-LT
#	1	DMC	3072	Beaver Gray-VY LT
●	1	DMC	645	Beaver Gray-VY DK
●	1	DMC	646	Beaver Gray-DK

Symbol	Strands	Type	Number	Color
	1	DMC	823	Navy Blue-DK
	1	DMC	939	Navy Blue-VY DK
	1	DMC	823	Navy Blue-DK
	1	DMC	939	Navy Blue-VY DK
	1	DMC	646	Beaver Gray-DK
	1	DMC	647	Beaver Gray-MD
	1	DMC	647	Beaver Gray-MD
	1	DMC	648	Beaver Gray-LT
	1	DMC	413	Pewter Gray-DK
	1	DMC	645	Beaver Gray-VY DK

Расход нитей

Нитей в мотке: 6

Длина мотка: 795.0 cm

Type	Number	Full	Half	Quarter	Petite	Back(cm)	Str(cm)	Spec(cm)	French	Bead	Skein Est
DMC 310	310	3544	0	0	0	0.0	0.0	0.0	0	0	2.000
DMC 316	316	124	0	0	0	0.0	0.0	0.0	0	0	1.000
DMC 318	318	4394	0	0	0	0.0	0.0	0.0	0	0	2.000
DMC 413	413	1576	0	0	0	0.0	0.0	0.0	0	0	1.000
DMC 414	414	2373	0	0	0	0.0	0.0	0.0	0	0	1.000
DMC 415	415	4059	0	0	0	0.0	0.0	0.0	0	0	2.000
DMC 554	554	173	0	0	0	0.0	0.0	0.0	0	0	1.000
DMC 580	580	370	0	0	0	0.0	0.0	0.0	0	0	1.000
DMC 645	645	4238	0	0	0	0.0	0.0	0.0	0	0	2.000
DMC 646	646	5167	0	0	0	0.0	0.0	0.0	0	0	2.000
DMC 647	647	10159	0	0	0	0.0	0.0	0.0	0	0	4.000
DMC 648	648	8786	0	0	0	0.0	0.0	0.0	0	0	3.000
DMC 762	762	1631	0	0	0	0.0	0.0	0.0	0	0	1.000
DMC 798	798	130	0	0	0	0.0	0.0	0.0	0	0	1.000
DMC 803	803	640	0	0	0	0.0	0.0	0.0	0	0	1.000
DMC 823	823	1079	0	0	0	0.0	0.0	0.0	0	0	1.000
DMC 824	824	117	0	0	0	0.0	0.0	0.0	0	0	1.000
DMC 844	844	3439	0	0	0	0.0	0.0	0.0	0	0	2.000
DMC 924	924	815	0	0	0	0.0	0.0	0.0	0	0	1.000
DMC 928	928	2786	0	0	0	0.0	0.0	0.0	0	0	1.000
DMC 934	934	3876	0	0	0	0.0	0.0	0.0	0	0	2.000
DMC 936	936	1196	0	0	0	0.0	0.0	0.0	0	0	1.000
DMC 937	937	873	0	0	0	0.0	0.0	0.0	0	0	1.000
DMC 939	939	4387	0	0	0	0.0	0.0	0.0	0	0	2.000
DMC 3012	3012	564	0	0	0	0.0	0.0	0.0	0	0	1.000
DMC 3021	3021	1737	0	0	0	0.0	0.0	0.0	0	0	1.000
DMC 3072	3072	3091	0	0	0	0.0	0.0	0.0	0	0	1.000
DMC 3364	3364	559	0	0	0	0.0	0.0	0.0	0	0	1.000
DMC 3371	3371	1233	0	0	0	0.0	0.0	0.0	0	0	1.000
DMC 3750	3750	659	0	0	0	0.0	0.0	0.0	0	0	1.000
DMC 3756	3756	681	0	0	0	0.0	0.0	0.0	0	0	1.000
DMC 3768	3768	1330	0	0	0	0.0	0.0	0.0	0	0	1.000
DMC 3787	3787	2935	0	0	0	0.0	0.0	0.0	0	0	1.000
DMC 3799	3799	2678	0	0	0	0.0	0.0	0.0	0	0	1.000
DMC 3820	3820	121	0	0	0	0.0	0.0	0.0	0	0	1.000
DMC 3829	3829	88	0	0	0	0.0	0.0	0.0	0	0	1.000
DMC 3835	3835	137	0	0	0	0.0	0.0	0.0	0	0	1.000
DMC 3836	3836	210	0	0	0	0.0	0.0	0.0	0	0	1.000
DMC 414	414	3978	0	0	0	0.0	0.0	0.0	0	0	2.000
DMC 318	318										
DMC 823	823	1163	0	0	0	0.0	0.0	0.0	0	0	1.000
DMC 3750	3750										
DMC 318	318	4550	0	0	0	0.0	0.0	0.0	0	0	2.000
DMC 415	415										
DMC 648	648	3264	0	0	0	0.0	0.0	0.0	0	0	2.000
DMC 3072	3072										
DMC 645	645	4669	0	0	0	0.0	0.0	0.0	0	0	2.000
DMC 646	646										
DMC 823	823	1167	0	0	0	0.0	0.0	0.0	0	0	1.000
DMC 939	939										
DMC 823	823	83	0	0	0	0.0	0.0	0.0	0	0	1.000
DMC 939	939										
DMC 646	646	7219	0	0	0	0.0	0.0	0.0	0	0	3.000
DMC 647	647										

ХИМЕРА

Type	Number	Full	Half	Quarter	Petite	Back(cm)	Str(cm)	Spec(cm)	French	Bead	Skein Est.
■ DMC	647	14576	0	0	0	0.0	0.0	0.0	0	0	5.000
■ DMC	648										
■ DMC	413	3376	0	0	0	0.0	0.0	0.0	0	0	2.000
■ DMC	645										