

**ELAINE DAVIDSON'S**

# CLASSIC CROSS STITCH

*House On Chestnut Hill based on a painting by J Rossini*  
*2016C Free*



**Embroidery Designs in counted cross stitch Chart Only**

- Approximate design size 200 x 201 stitches
- 14 count 14.3 x 14.3 inches
- 16 count 12.6 x 12.6 inches
- 18 count 11.2 x 11.2 inches
- 22 count 9.2 x 9.2 inches
- 25 count 8.1 x 8.1 inches
- 30 count 6.7 x 6.7 inches

Made In Canada

**Date: 01/01/16**  
**Copyright 2016**



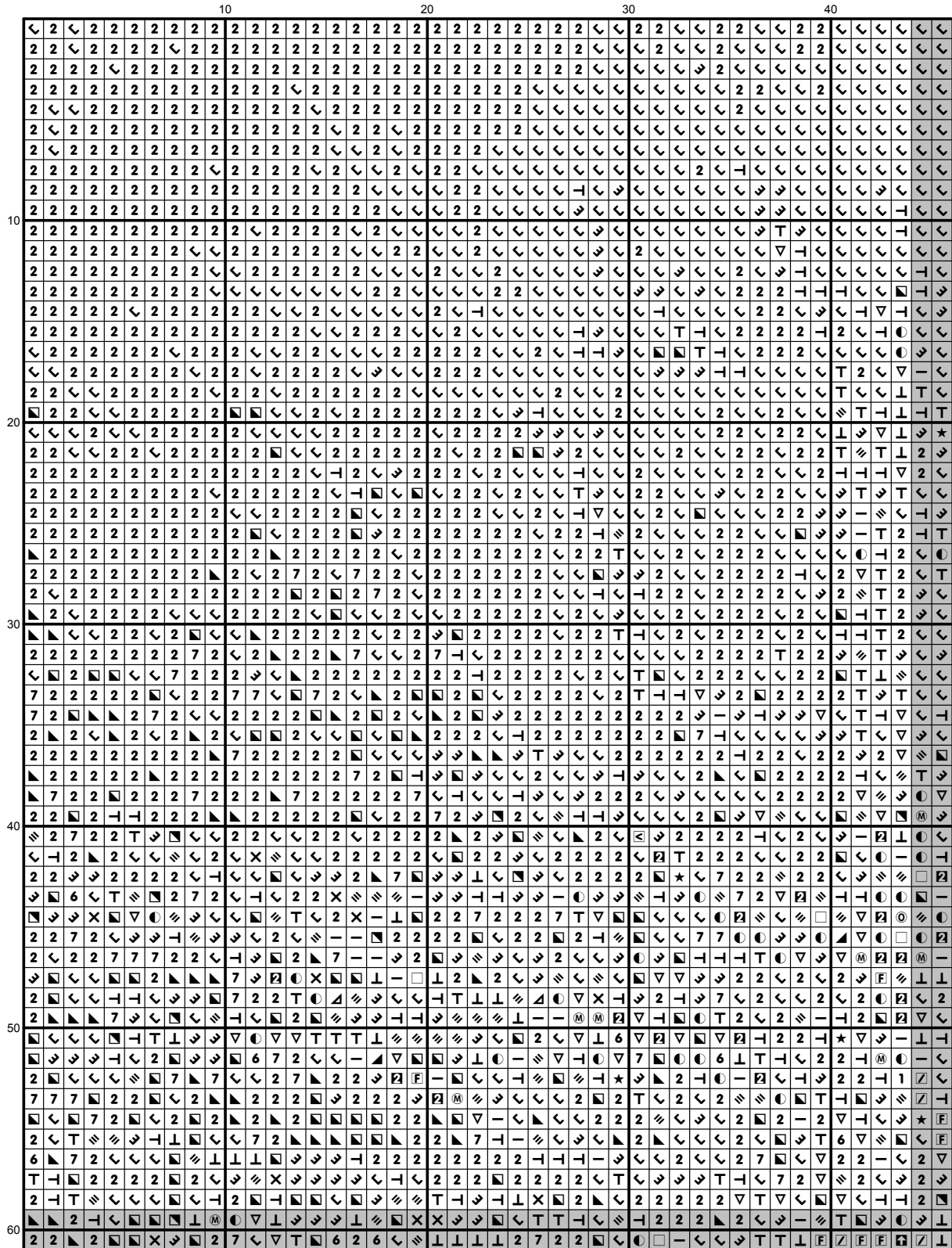
Pattern Pages are in the following order plus the symbol key

1	2	3	4	5
6	7	8	9	10
11	12	13	14	15
16	17	18	19	20
21	22	23	24	25

## Thread lengths for House On chrstnut Hill

(DMC)	Description	skeins
154	Prune rose	1
167	Dark mustard brown	1
168	Mouse grey	1
300	Mahogany	1
310	Black	1
317	Steel grey	1
318	Granite grey	1
407	Clay brown	1
414	Lead grey	1
415	Chrome grey	1
422	Light oak	1
433	Chocolate brown	1
436	Teddy brown	1
437	Camel	2
451	Shell pink grey	1
452	Pigeon grey	1
453	Turtledove grey	1
535	Stone grey	1
543	Shell beige	1
610	Dark golden brown	1
611	Sisal brown	1
613	Rope brown	1
640	Green grey	1
642	Earth grey	1
645	Dark steel grey	1
646	Platinum grey	1
647	Rock grey	1
648	Pepper grey	1
712	Cream	1
738	Sahara cream	2
762	Pearl grey	2
801	Mink brown	1
838	Dark wood	1
839	Root brown	1
840	Hare brown	1
841	Deer brown	1
842	Beige rope	1
844	Pepper black	1

869	Coffee brown	1
898	Teak brown	1
938	Espresso brown	1
939	Dark navy blue	1
945	Eggshell cream	1
948	Pale peach	1
950	Beige	1
3021	Cliff grey	1
3023	Light platinum grey	1
3024	Pale steel grey	1
3031	Dark Mocha brown	1
3032	Dark antique silver	1
3033	Antique silver	1
3041	Medium lilac	1
3042	Lilac	1
3045	Coffee cream	1
3064	Cinnamon brown	1
3072	Pale pearl grey	1
3371	Ebony	1
3743	Pale lilac	1
3756	Cloud blue	4
3772	Rosy tan	1
3774	Pale desert sand	1
3782	Gingerbread brown	1
3787	Wolf grey	1
3790	Cappuccino brown	1
3799	Anthracite grey	1
3828	Oaktree brown	1
3860	Taupe mauve	1
3861	Light taupe	1
3862	Mocha brown	1
3863	Otter brown	1
3864	Light mocha brown	1
3865	Winter white	1
3866	Garlic cream	1
B5200	Bright white	3
ECRUT	ECRUT	1



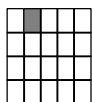
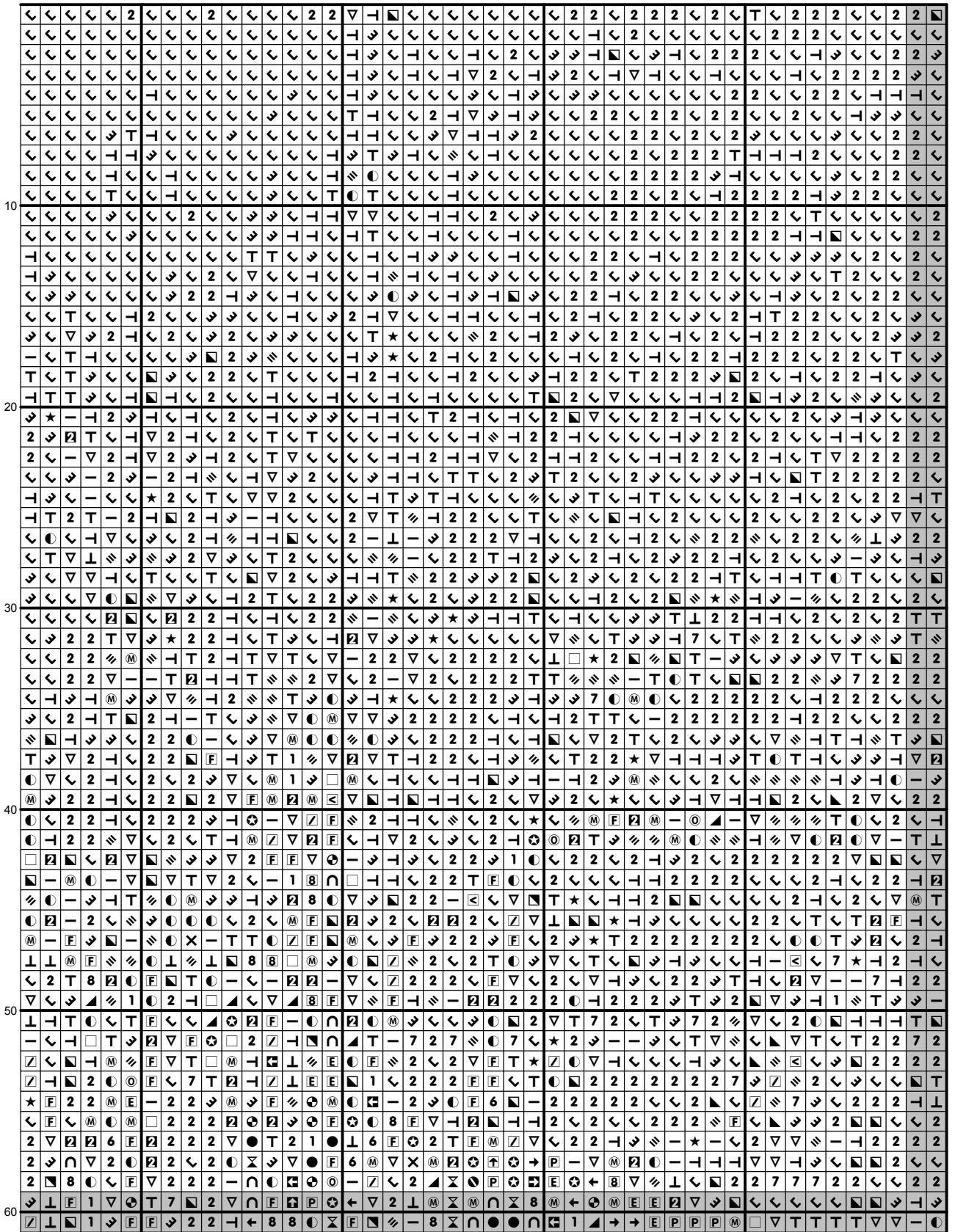
50

60

70

80

90



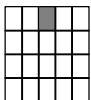
90

100

110

120

130

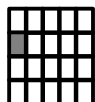








	10	20	30	40
60	...	...	...	...
70	...	...	...	...
80	...	...	...	...
90	...	...	...	...
100	...	...	...	...
110	...	...	...	...
120	...	...	...	...





90

100

110

120

130

60

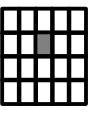
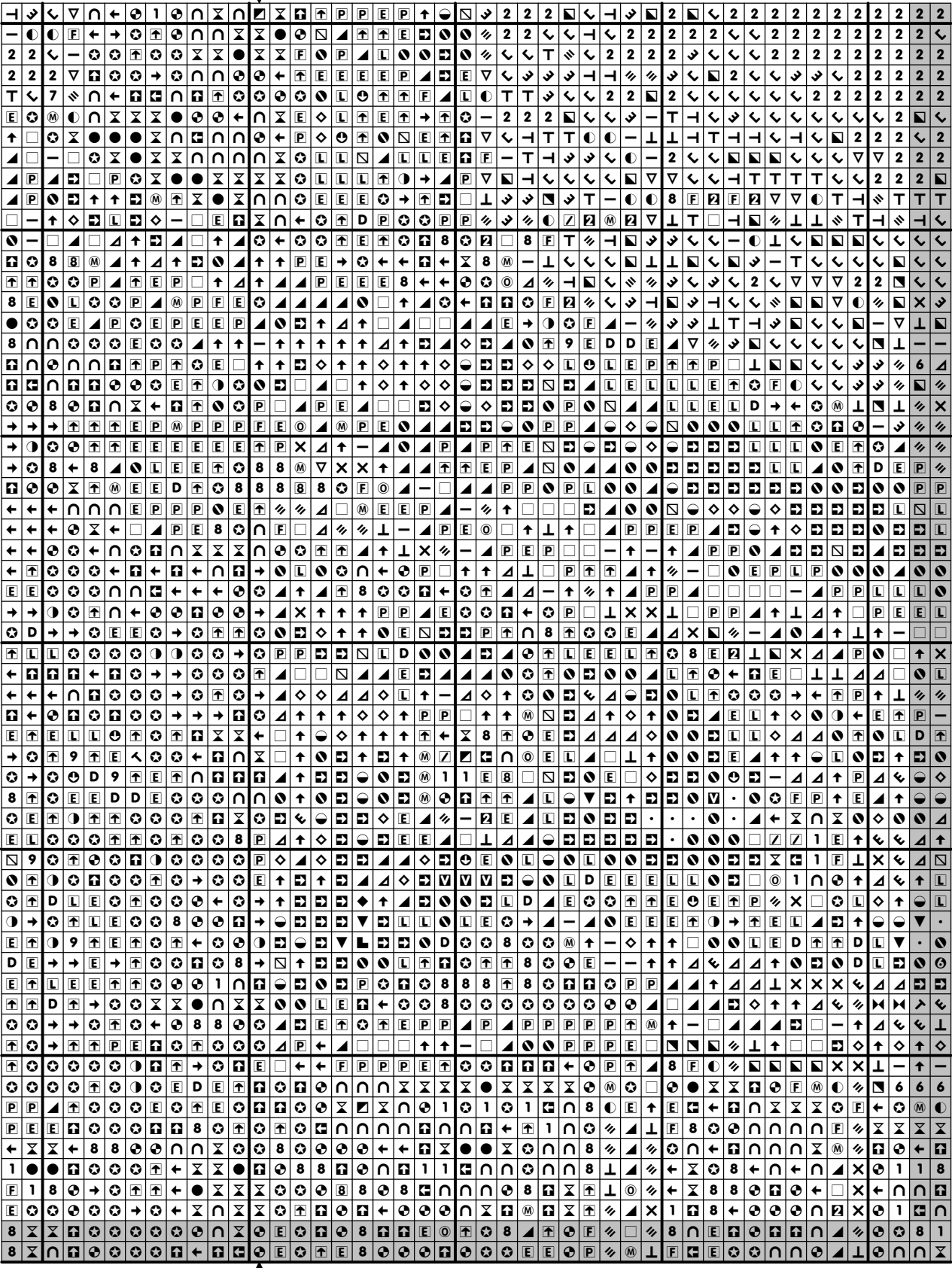
70

80

90

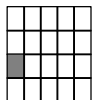
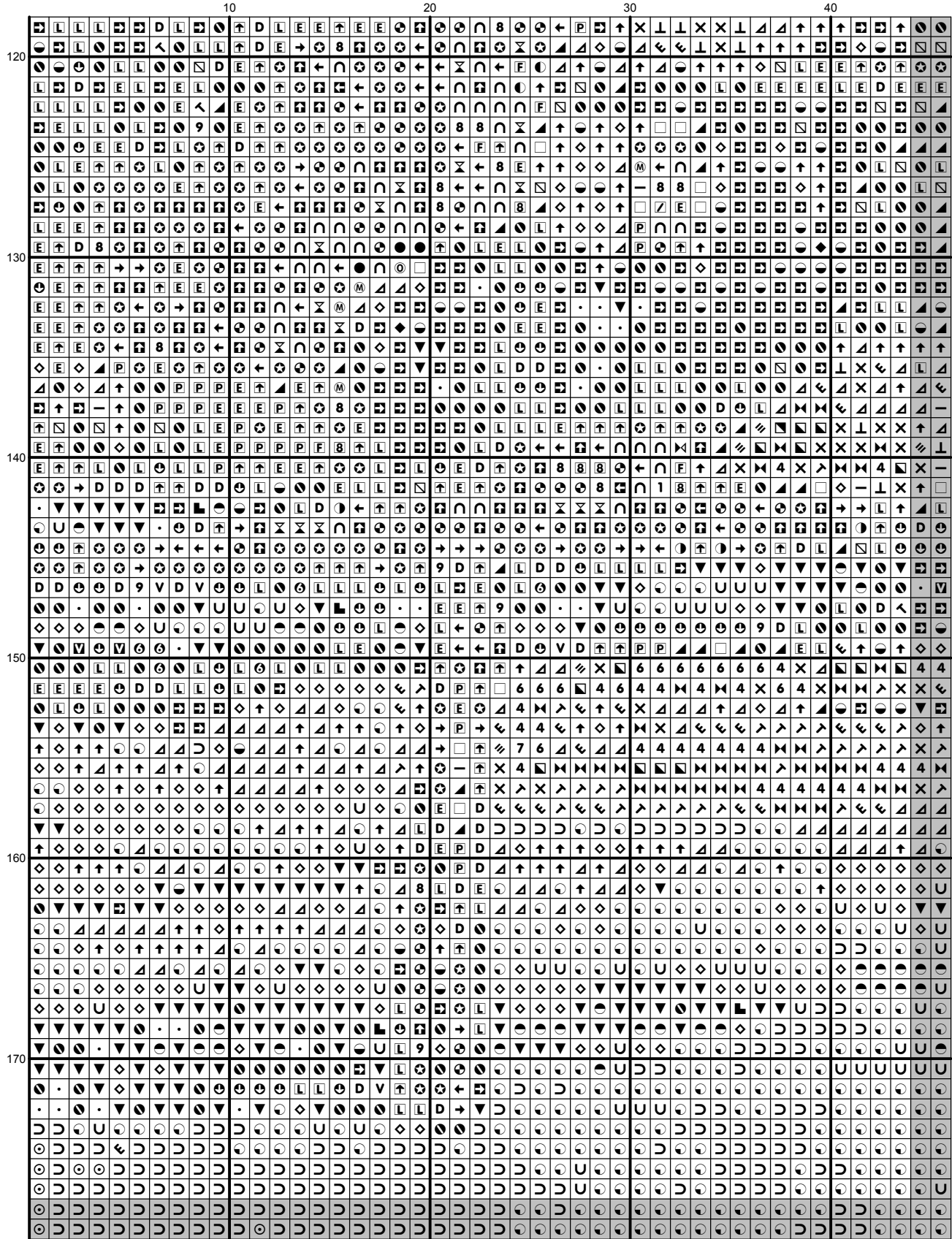
110

120

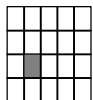
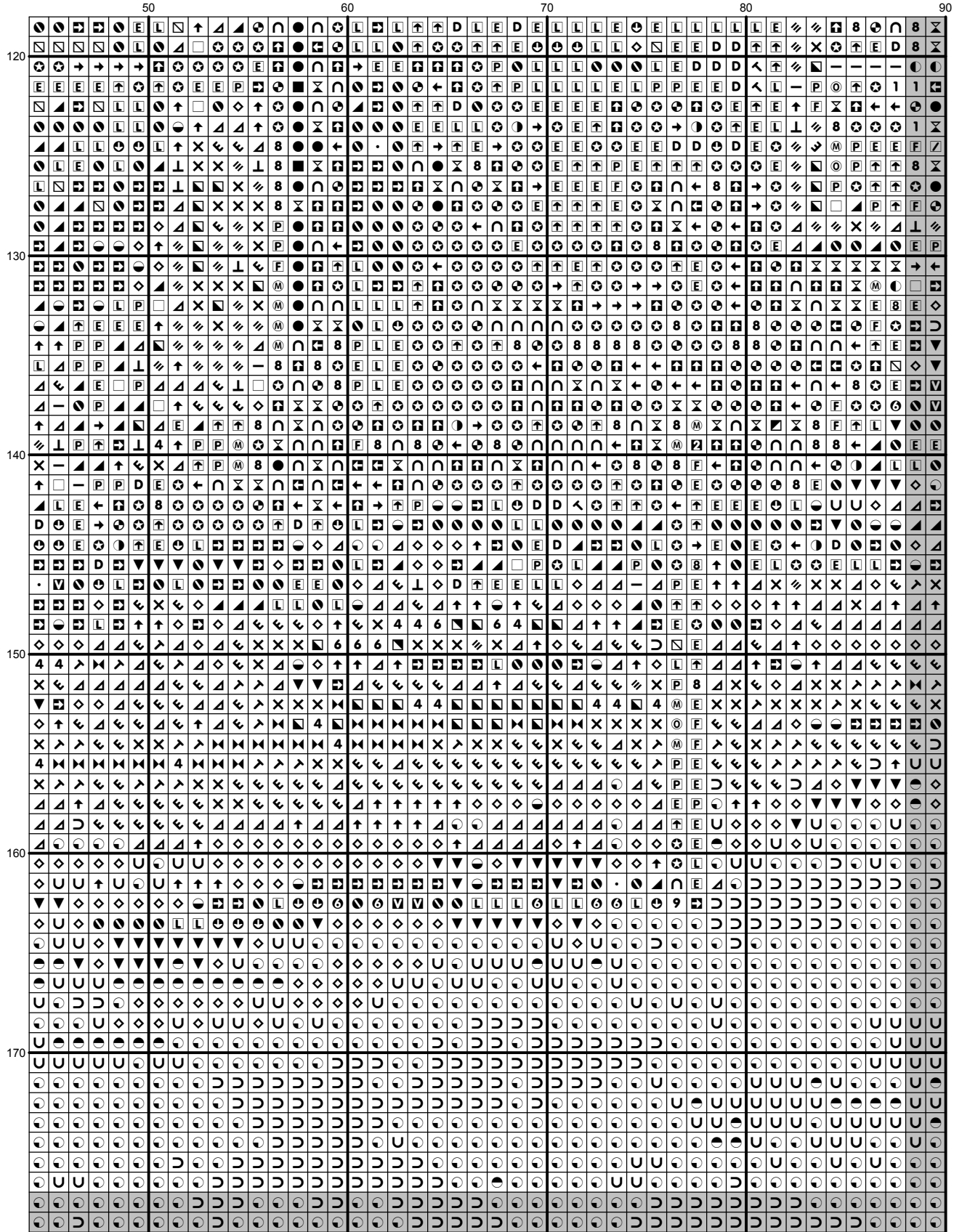


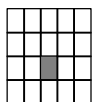
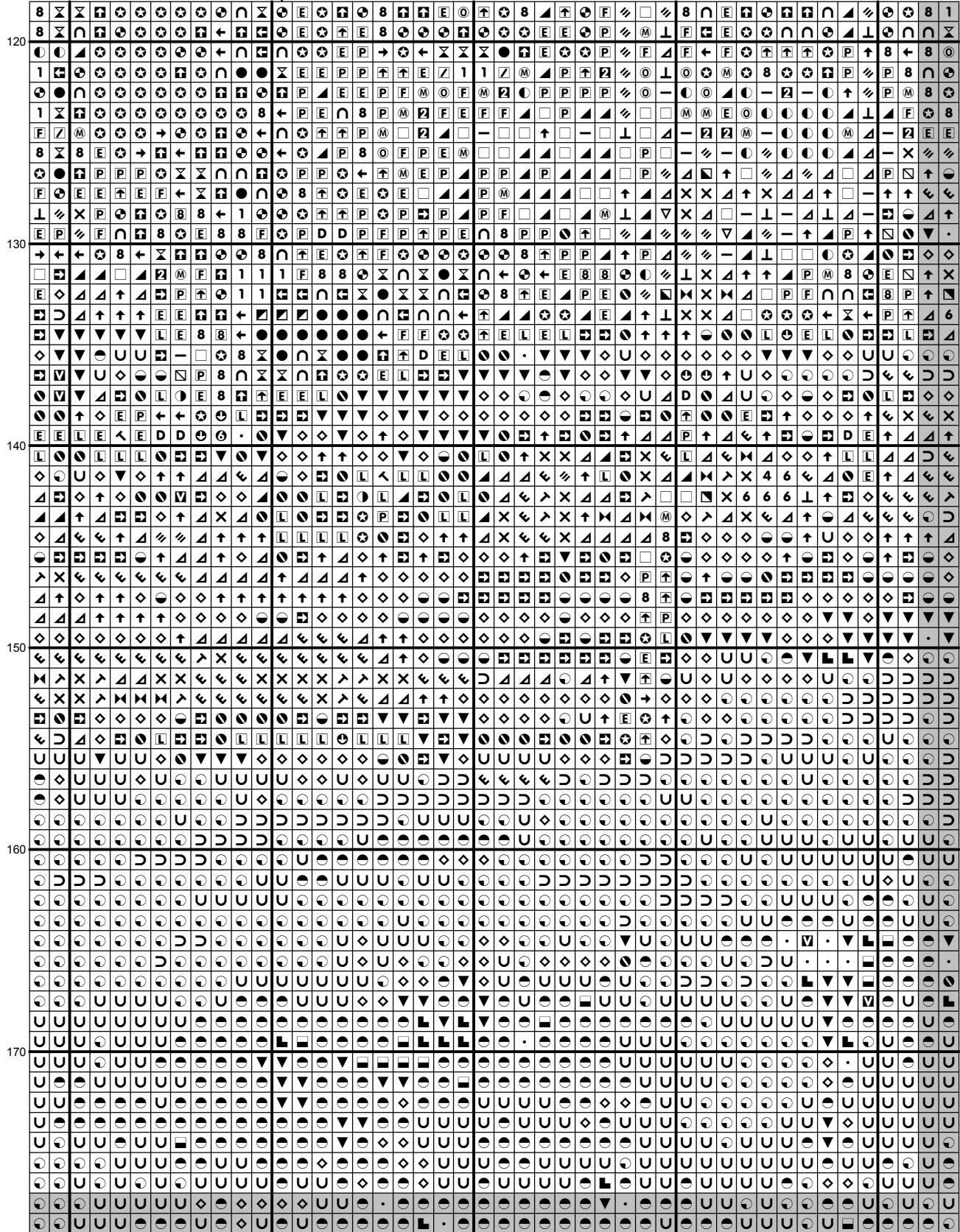


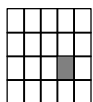
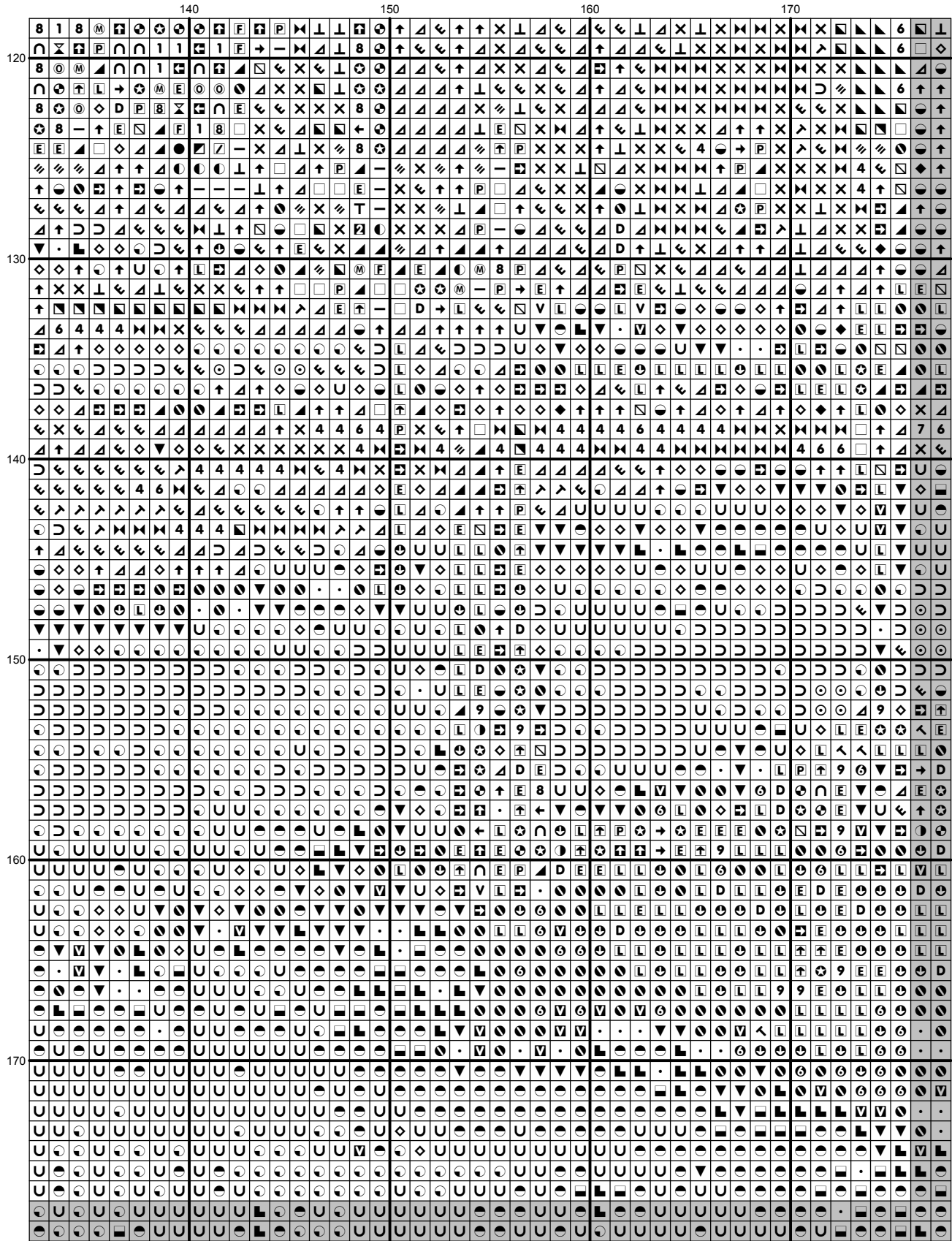












180 190 200 210

120

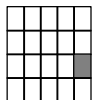
130

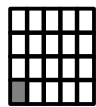
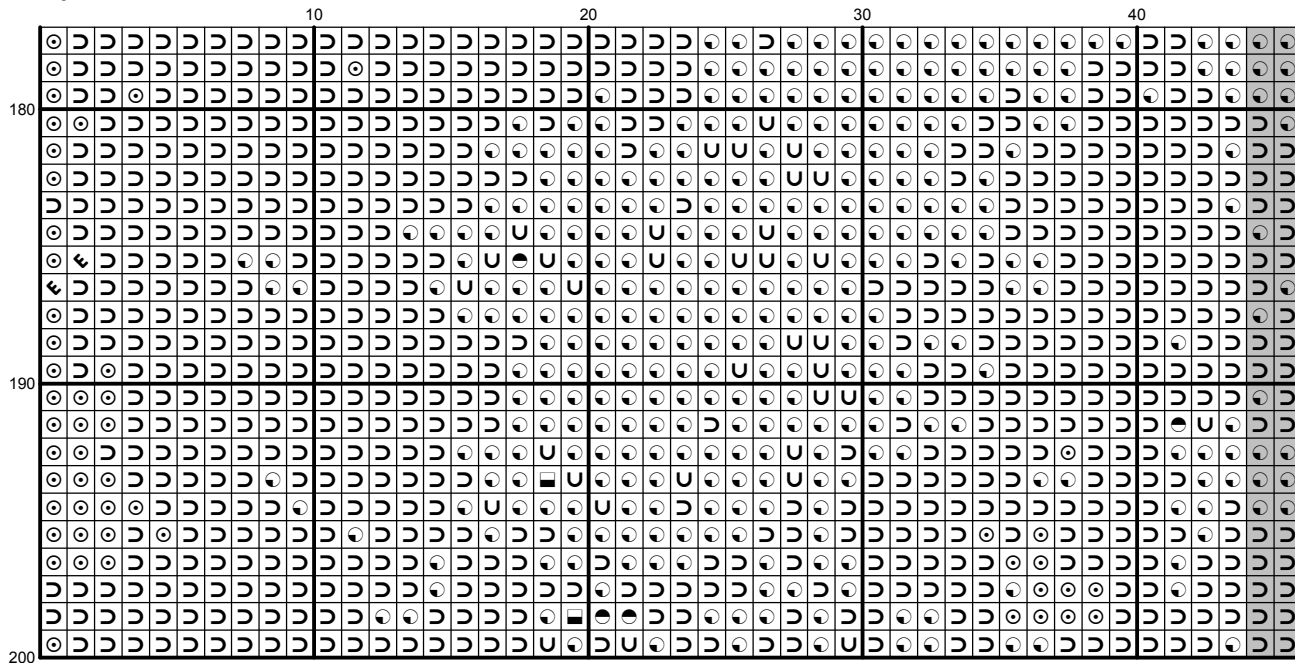
140

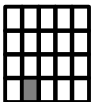
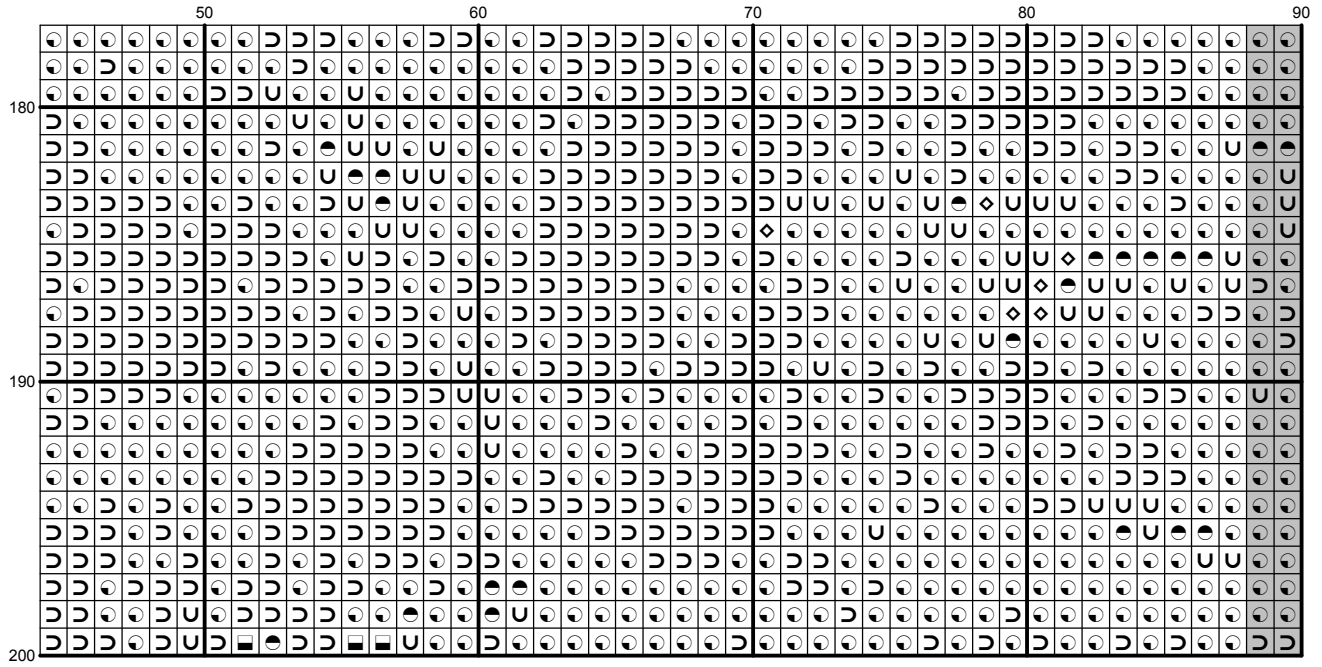
150

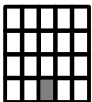
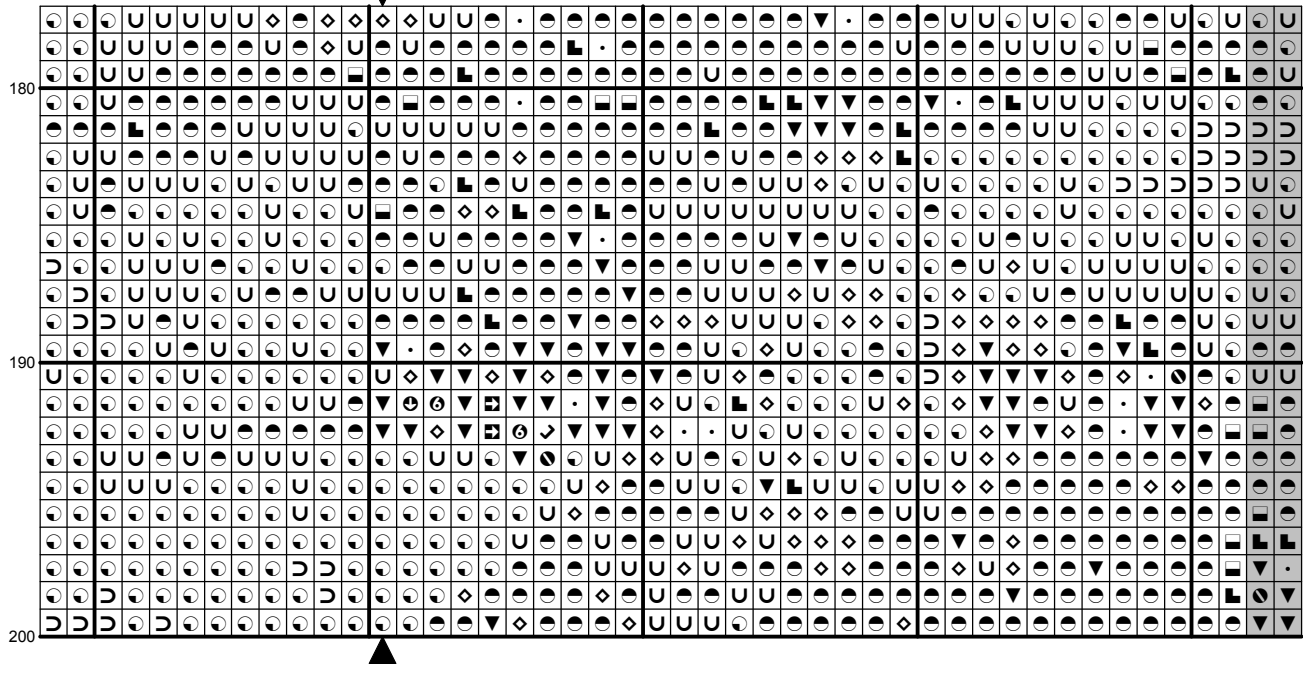
160

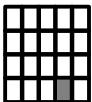
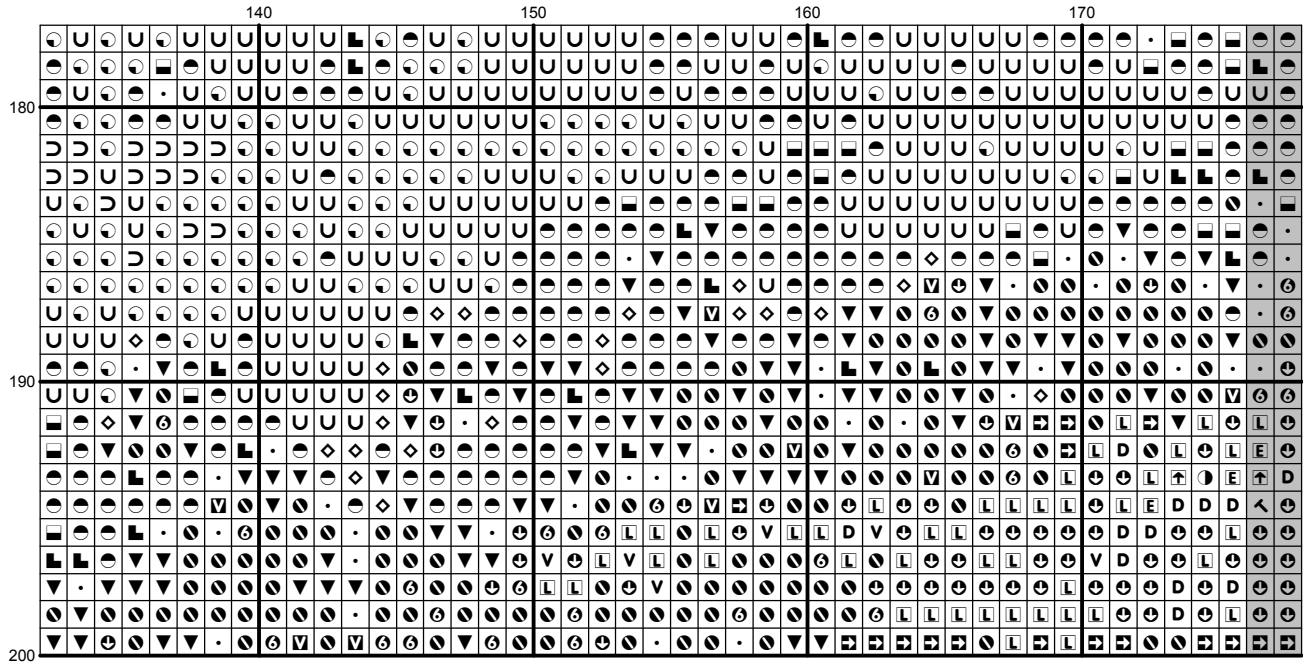
170



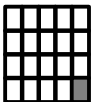
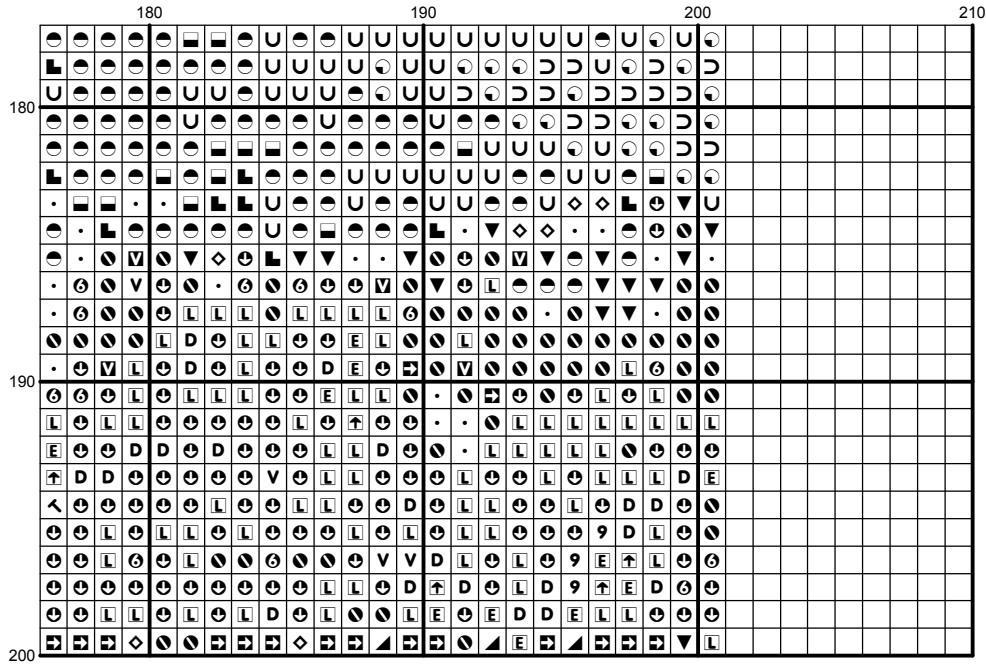












## Instructions and Symbol Key for Design "House On chrstnut Hill"

**Fabric:** 14 count Aida

**Stitches:** 201 x 200                      **Size:** 14.36 x 14.29 inches or 36.47 x 36.29 cm

**Colours:** DMC

Use 2 strands of thread for cross stitch

<u>Sym</u>	<u>No.</u>	<u>Colour Name</u>	<u>Sym</u>	<u>No.</u>	<u>Colour Name</u>
✕	154	Prune rose	▣	167	Dark mustard brown
┴	168	Mouse grey	↘	300	Mahogany
●	310	Black	▤	317	Steel grey
★	318	Granite grey	▼	407	Clay brown
◁	414	Lead grey	┴	415	Chrome grey
U	422	Light oak	↖	433	Chocolate brown
■	436	Teddy brown	○	437	Camel
Ⓜ	451	Shell pink grey	—	452	Pigeon grey
⚡	453	Turtledove grey	1	535	Stone grey
✕	543	Shell beige	9	610	Dark golden brown
D	611	Sisal brown	◆	613	Rope brown
P	640	Green grey	▤	642	Earth grey
⊗	645	Dark steel grey	F	646	Platinum grey
▤	647	Rock grey	▽	648	Pepper grey
6	712	Cream	∩	738	Sahara cream
↘	762	Pearl grey	→	801	Mink brown
⊞	838	Dark wood	⊗	839	Root brown
L	840	Hare brown	⊞	841	Deer brown
▲	842	Beige rope	⊞	844	Pepper black
v	869	Coffee brown	○	898	Teak brown
∩	938	Espresso brown	■	939	Dark navy blue
⊙	945	Eggshell cream	4	948	Pale peach
↶	950	Beige	⊗	3021	Cliff grey
□	3023	Light platinum grey	┴	3024	Pale steel grey
↑	3031	Dark Mocha brown	◐	3032	Dark antique silver
X	3033	Antique silver	⊙	3041	Medium lilac
○	3042	Lilac	.	3045	Coffee cream
●	3064	Cinnamon brown	↘	3072	Pale pearl grey
⌘	3371	Ebony	⚡	3743	Pale lilac
2	3756	Cloud blue	⊗	3772	Rosy tan
↗	3774	Pale desert sand	↑	3782	Gingerbread brown
8	3787	Wolf grey	⊞	3790	Cappuccino brown
▤	3799	Anthracite grey	┴	3828	Oaktree brown
E	3860	Taupe mauve	▲	3861	Light taupe
⊙	3862	Mocha brown	◐	3863	Otter brown
◇	3864	Light mocha brown	7	3865	Winter white
▤	3866	Garlic cream	▣	B5200	Bright white
▣	ECRUT	ECRUT			

This chart has been designed and printed with our best intentions of being without mistakes. However, the possibility of human error, printing mistakes or the variation of individual stitching does exist, and we regret that we cannot be responsible for this.

Note: The shaded blocks on the chart represent overlapping stitches.  
Copyright © Classic cross stitch 2016 All rights reserved.