

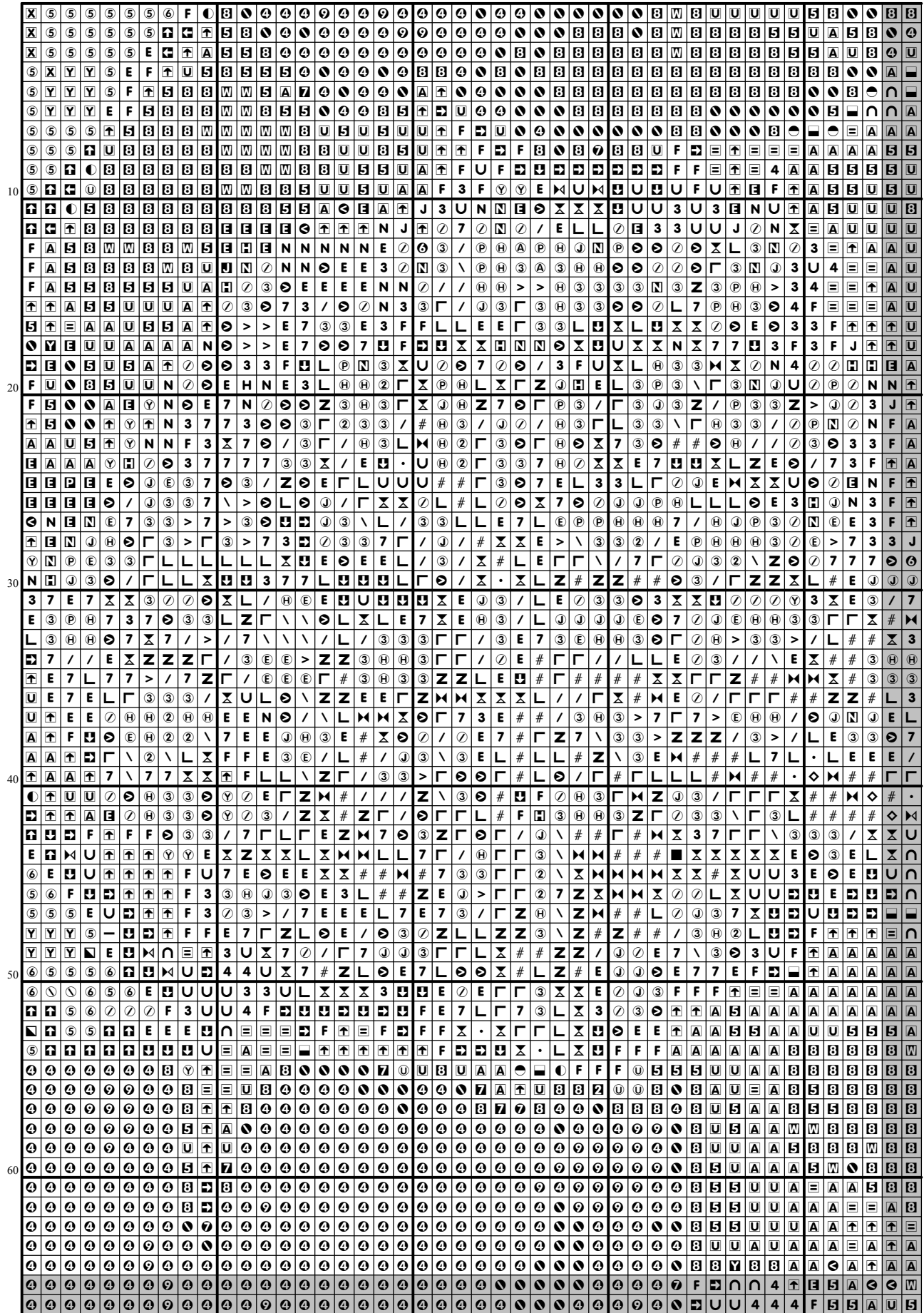
220

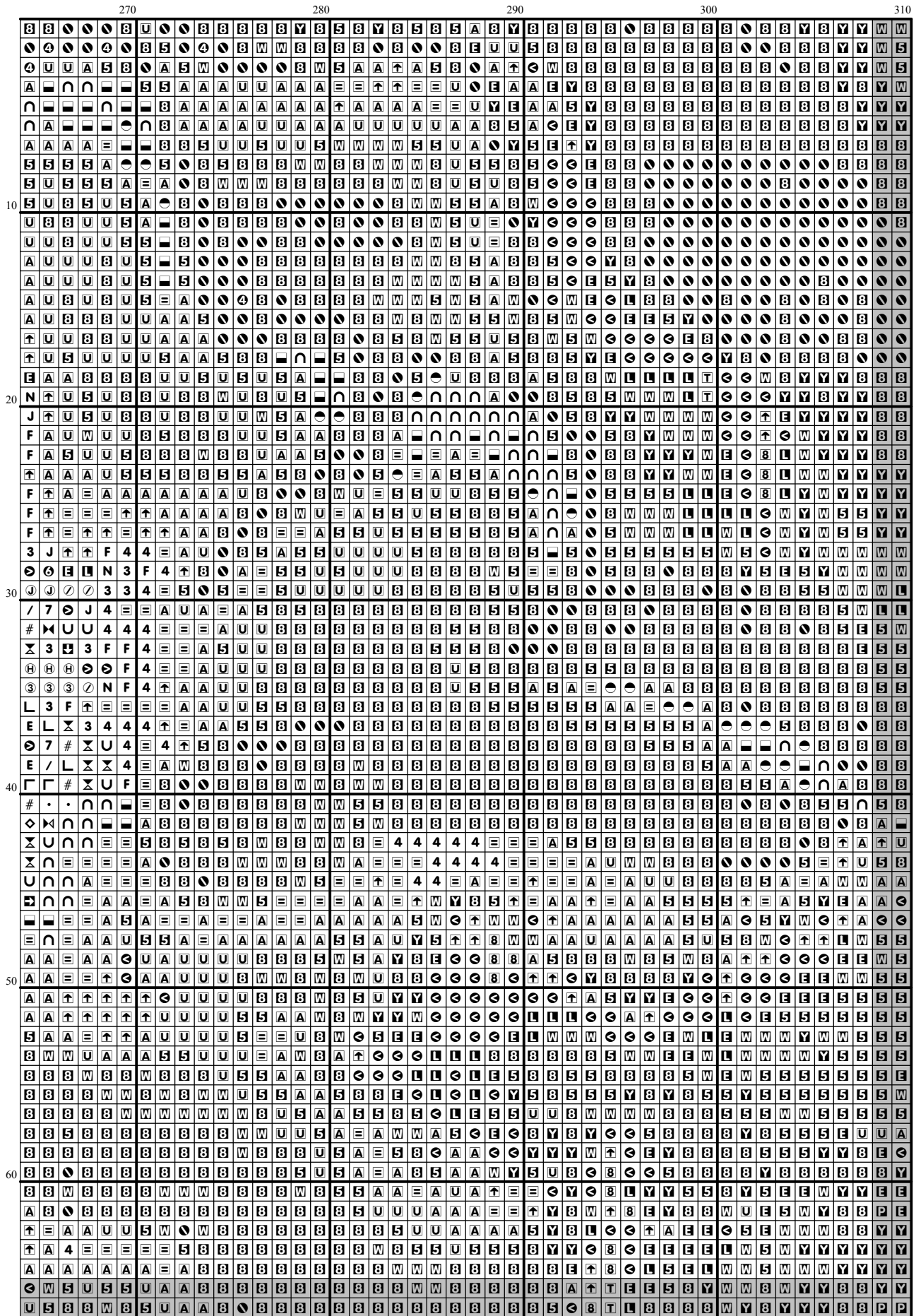
230

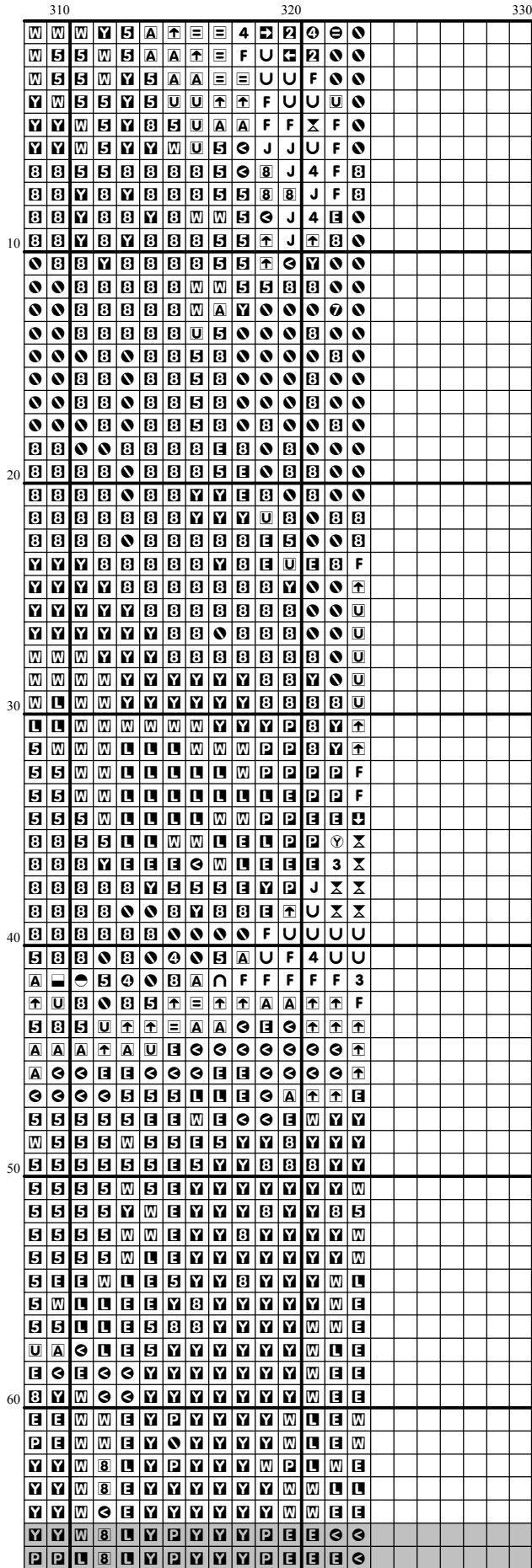
240

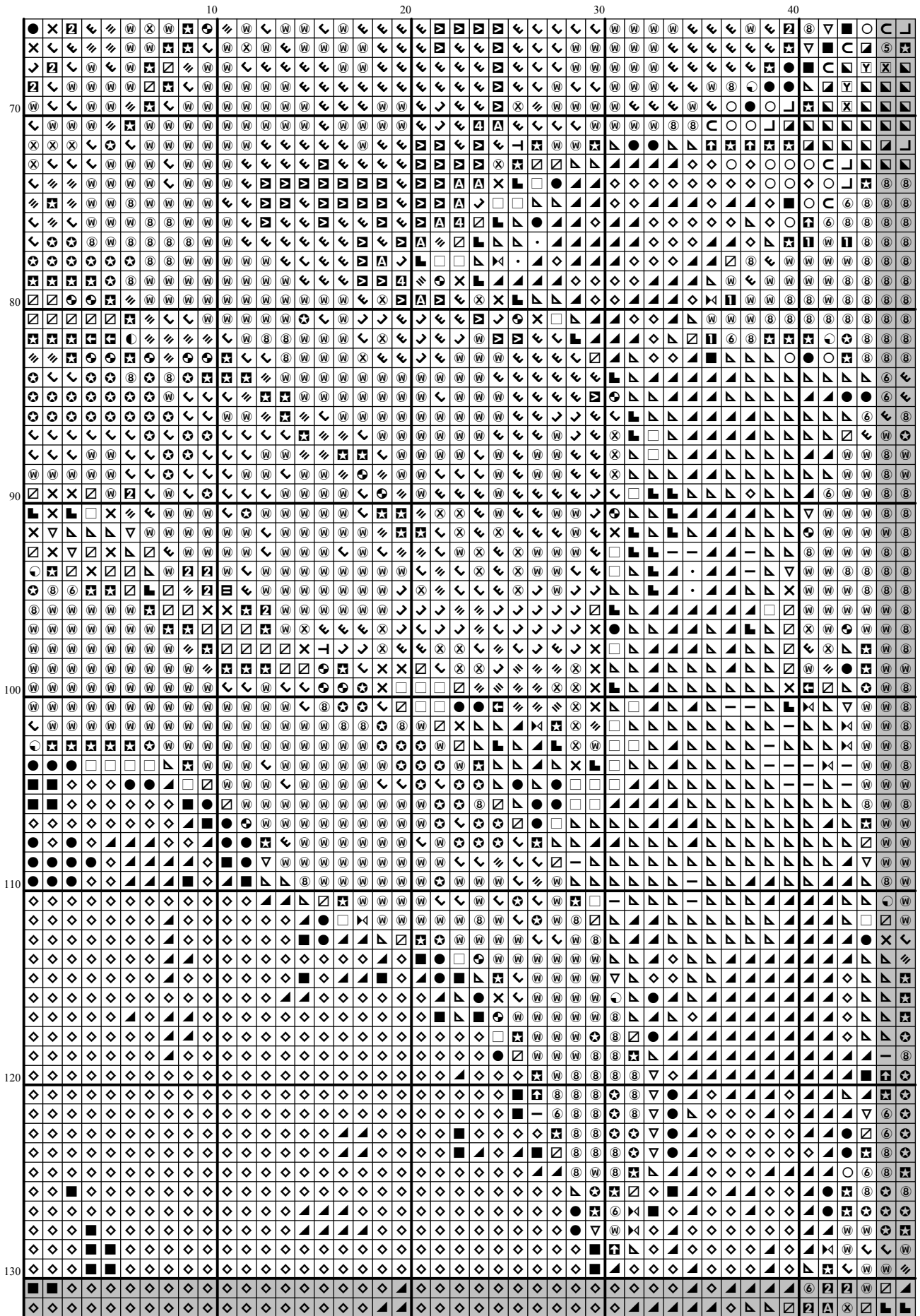
250

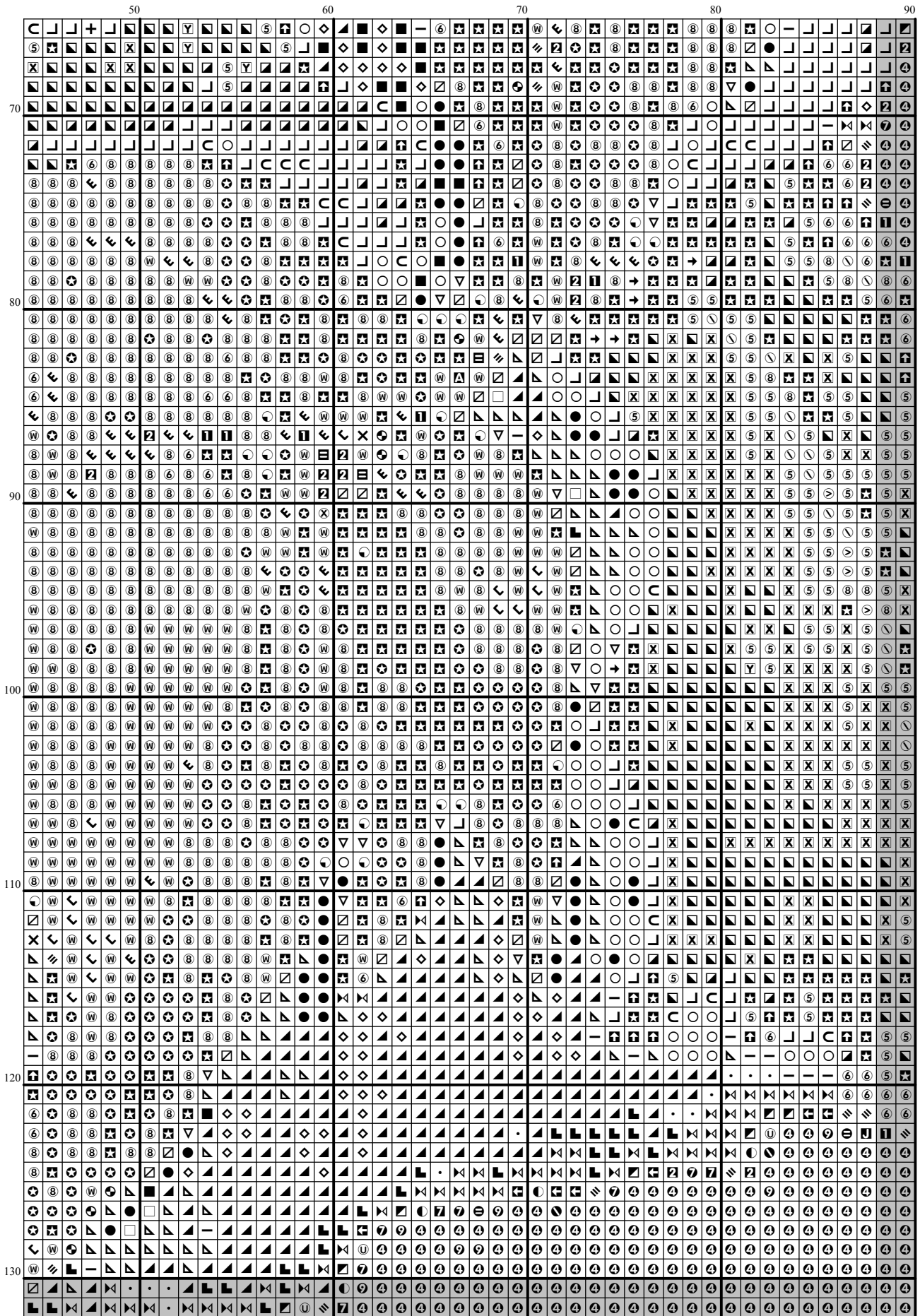
260

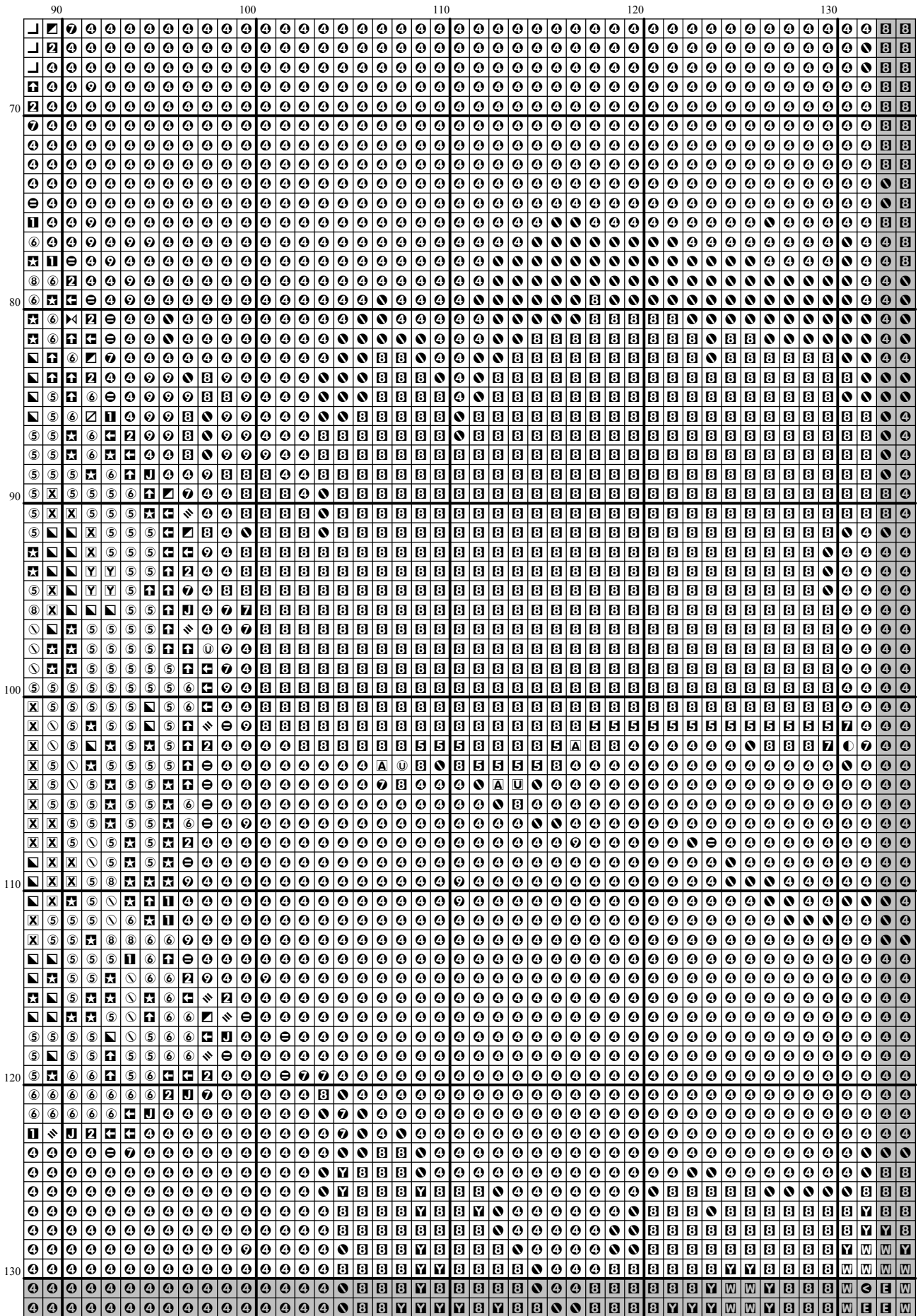


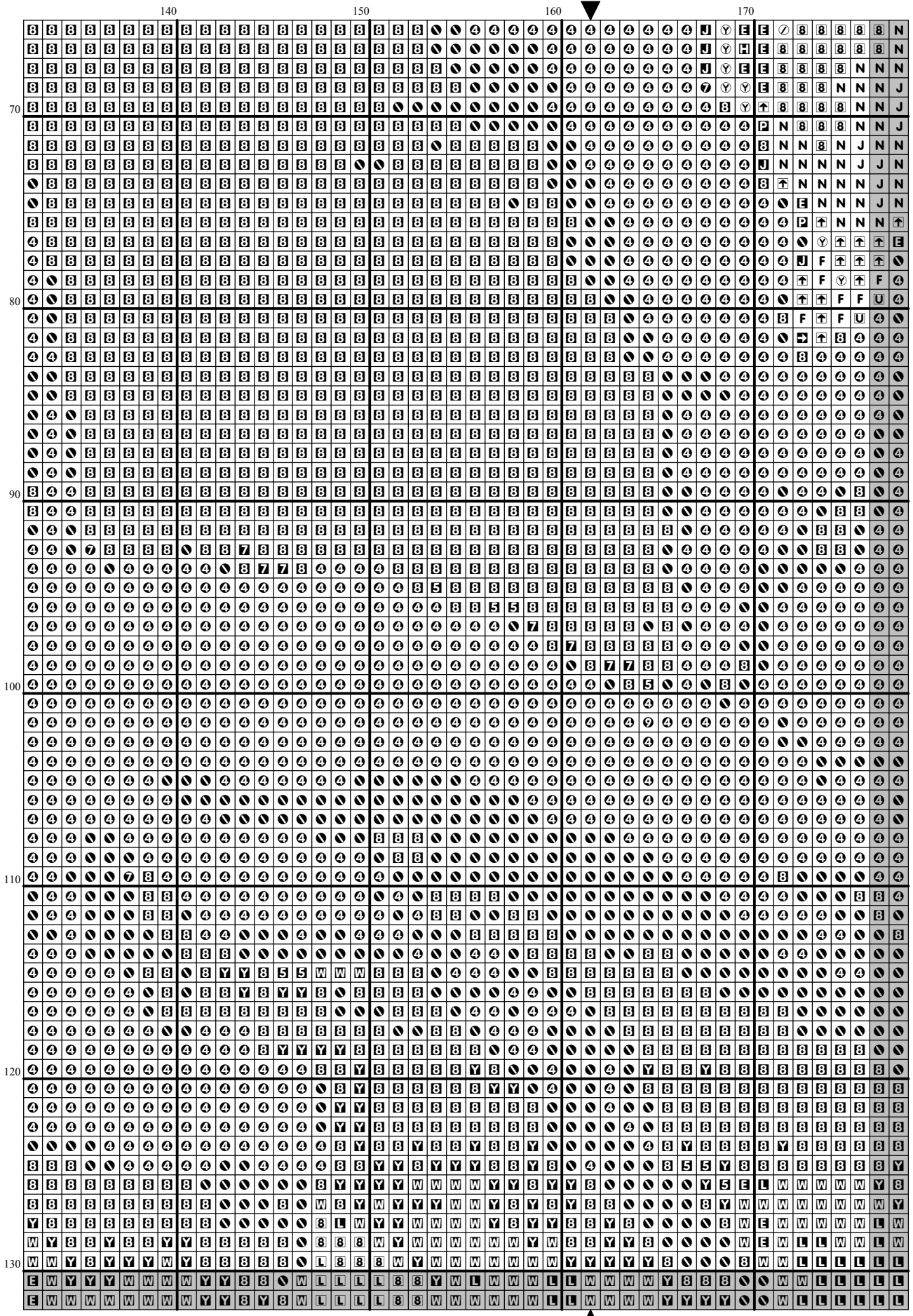


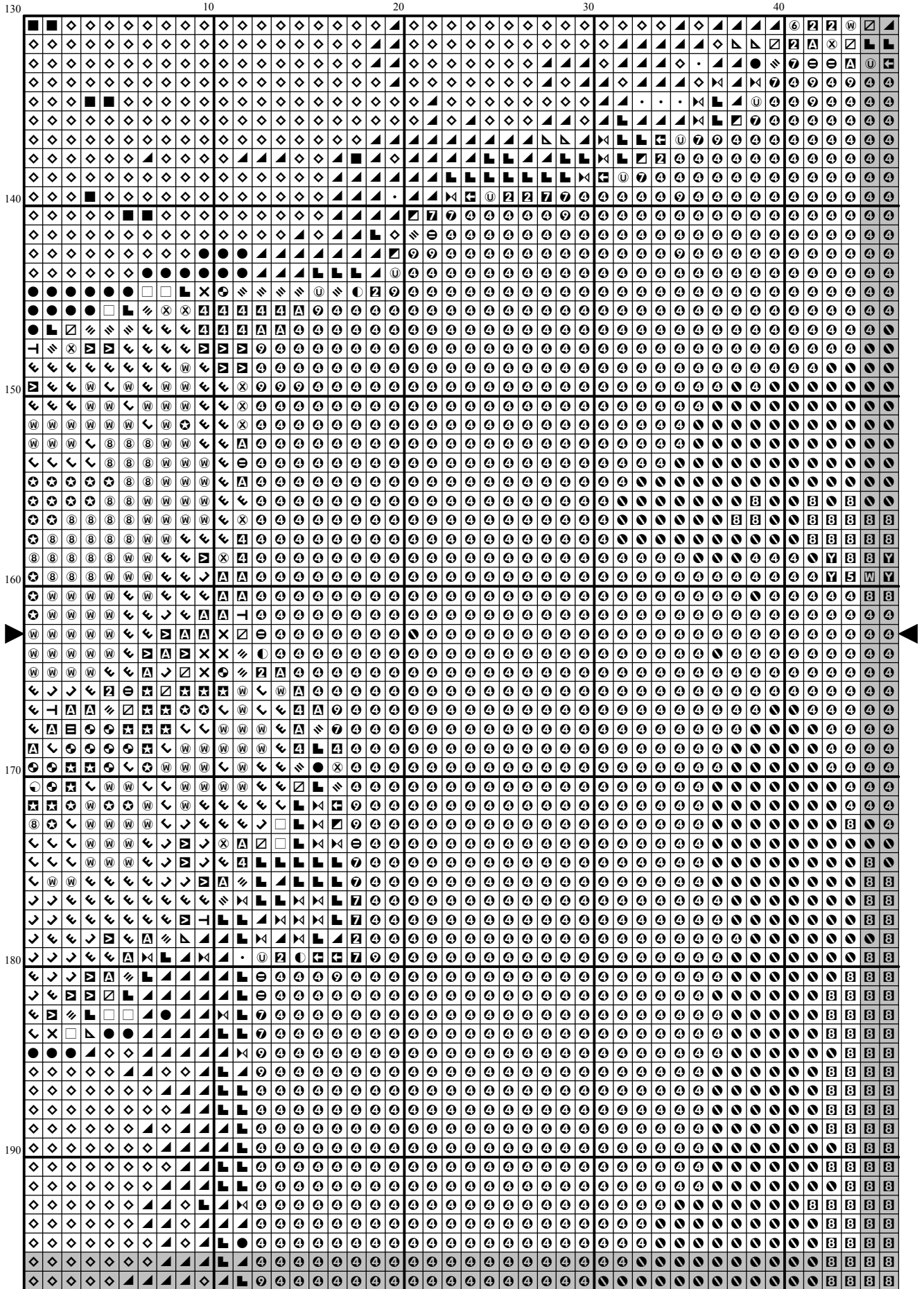


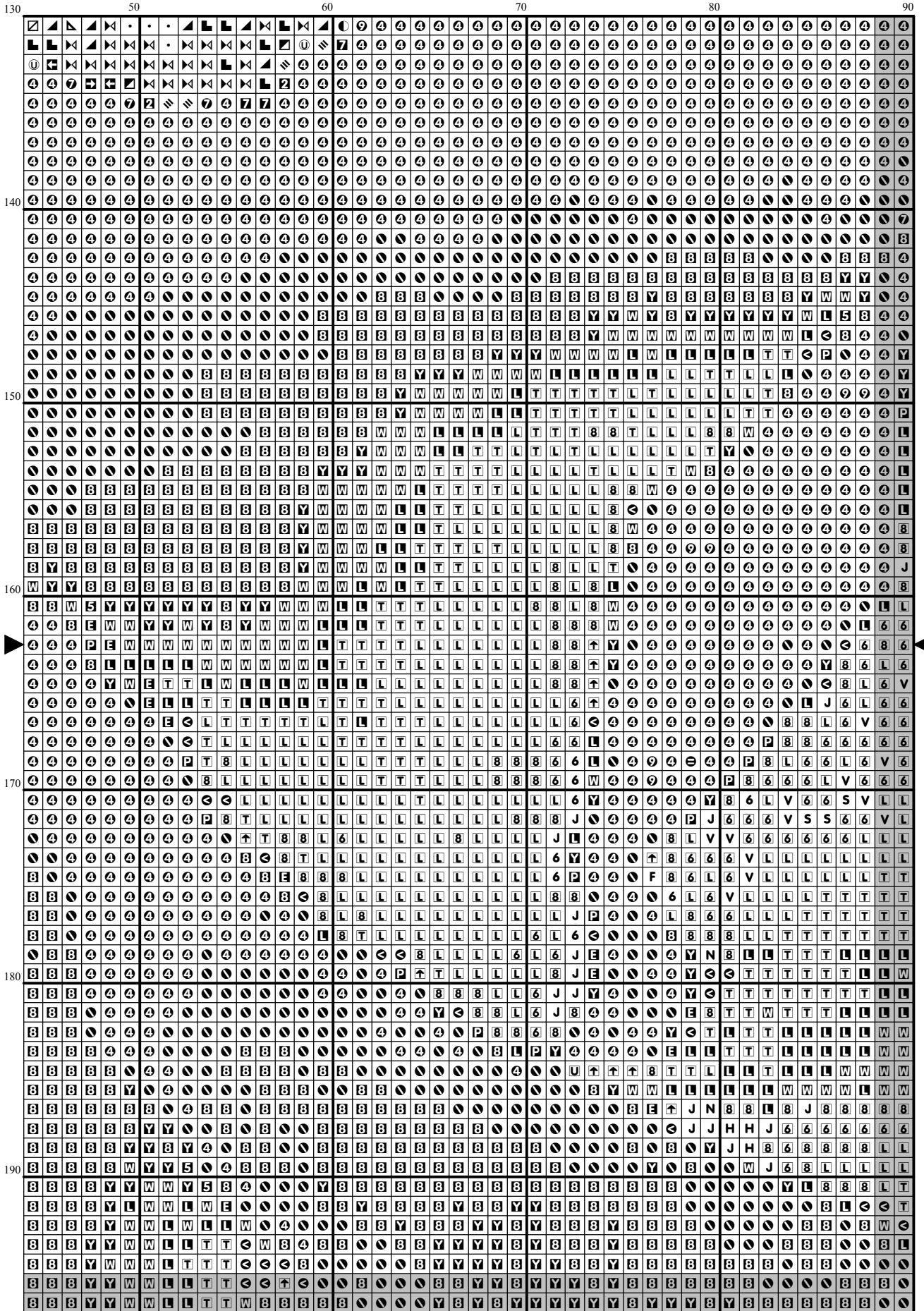


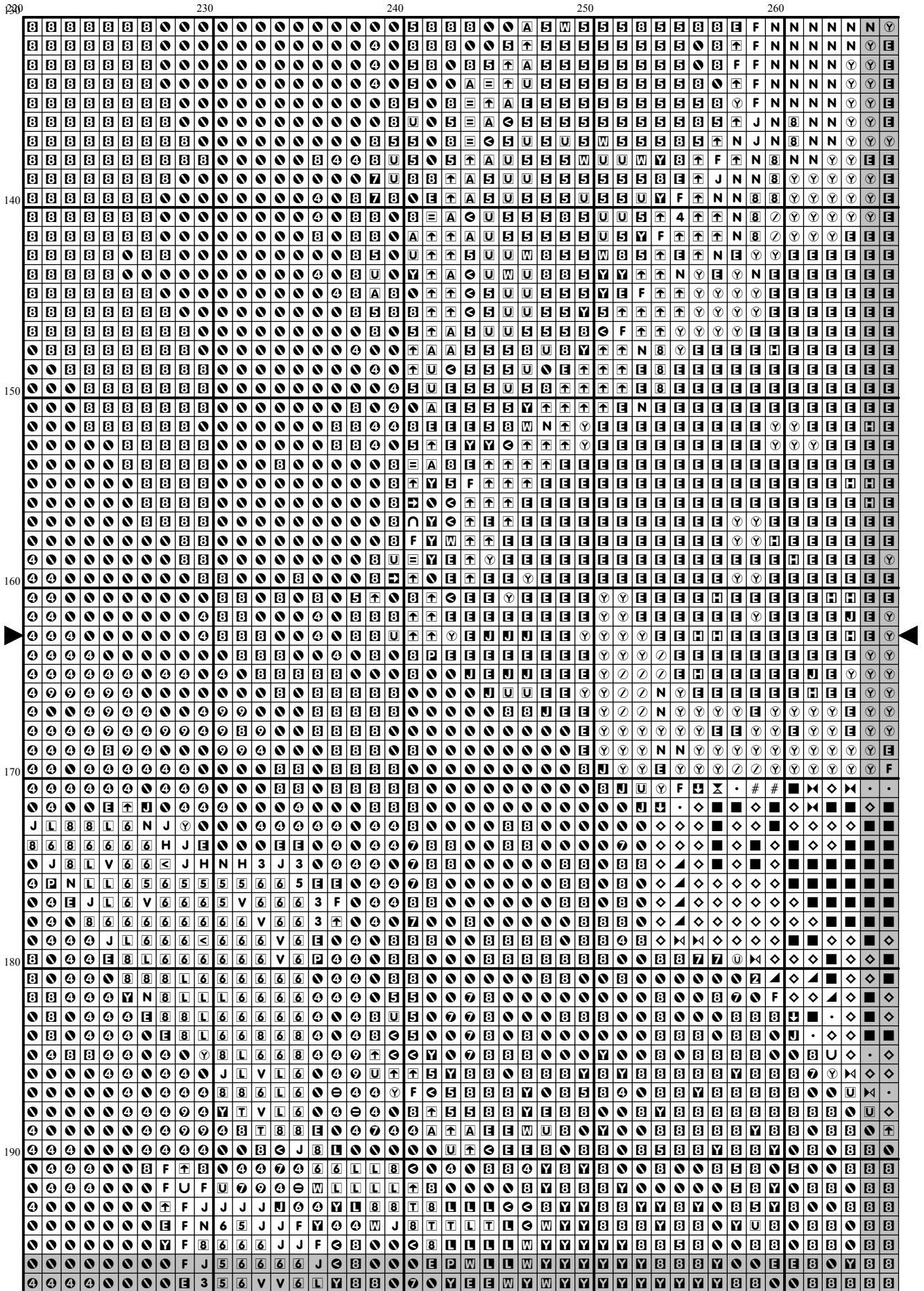


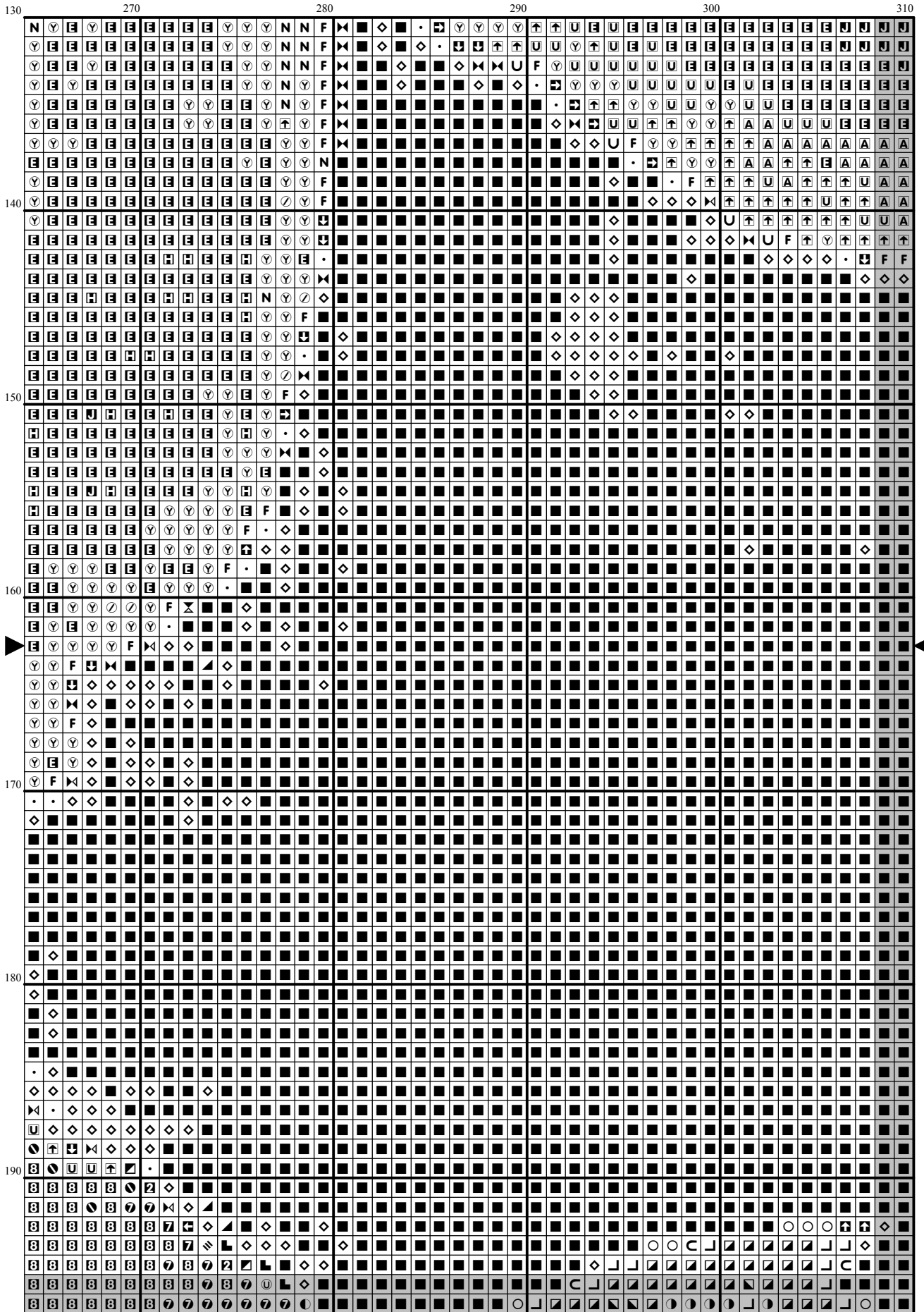


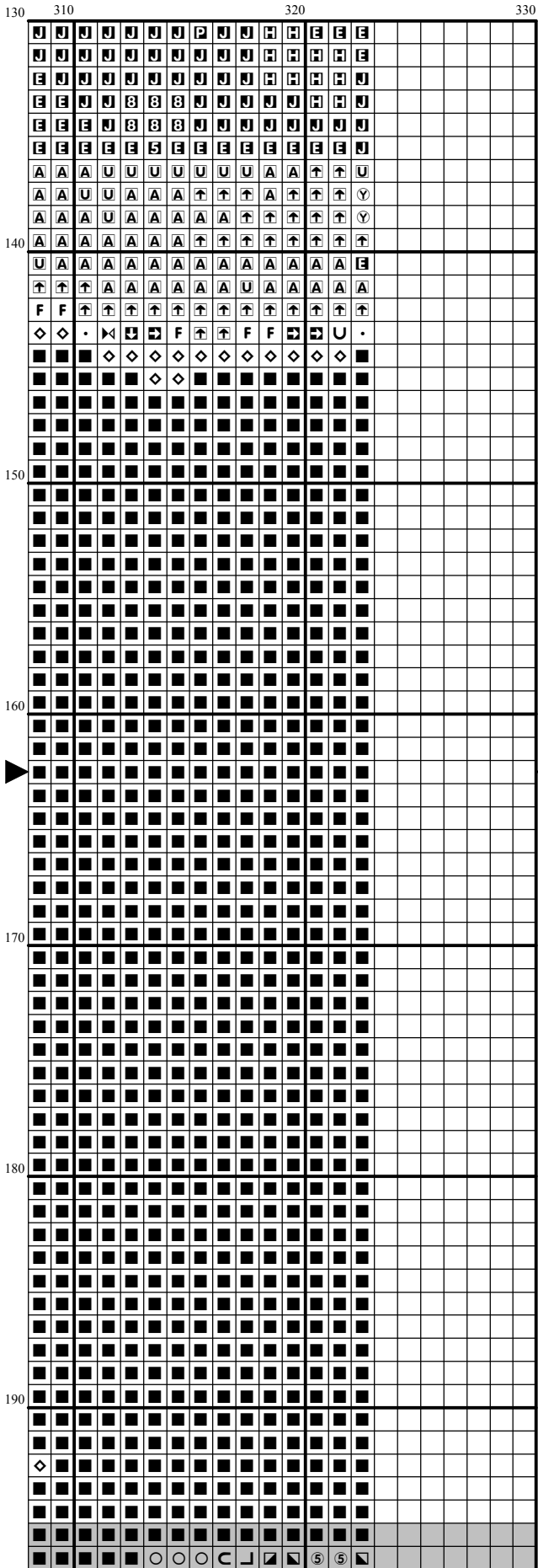


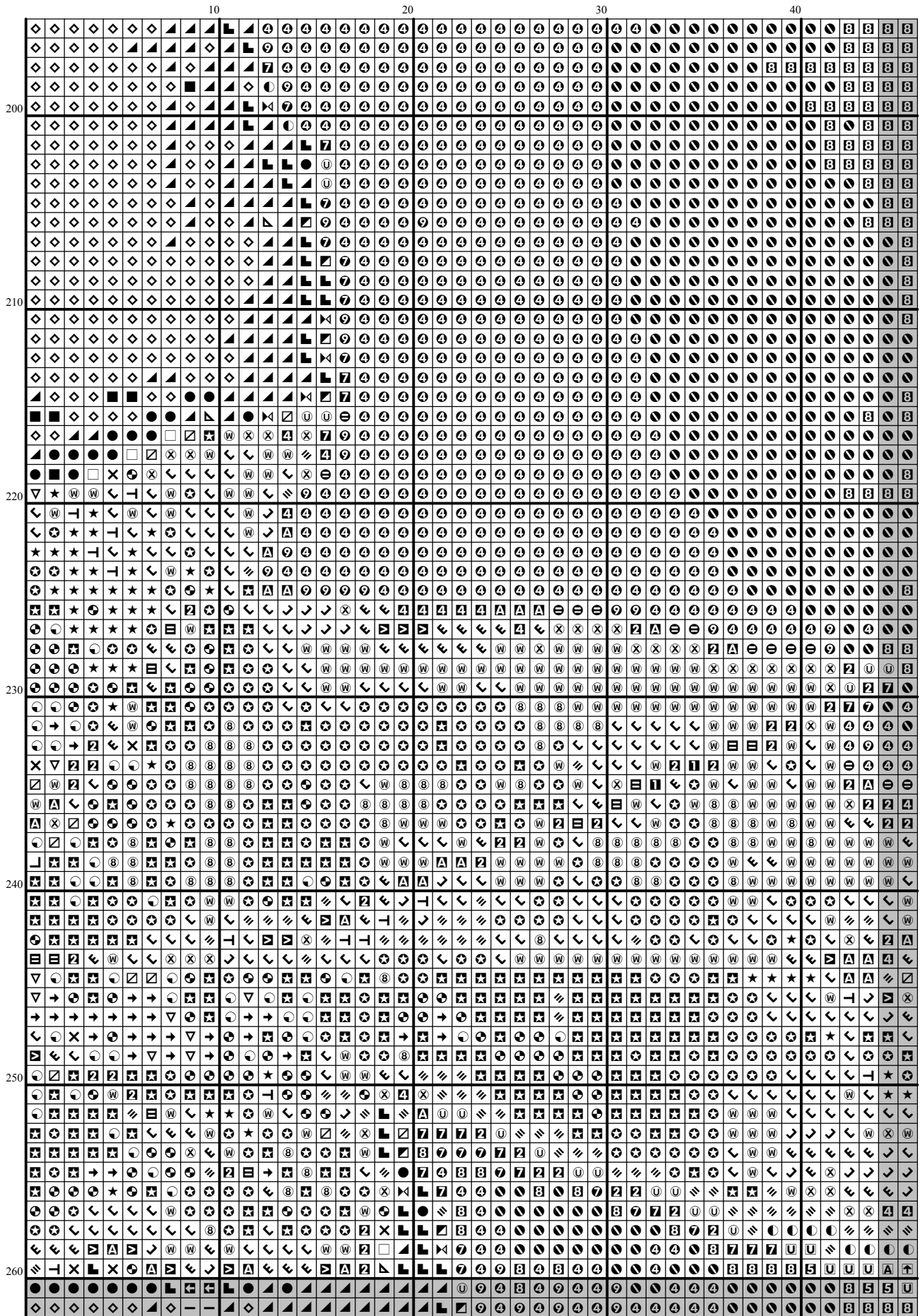


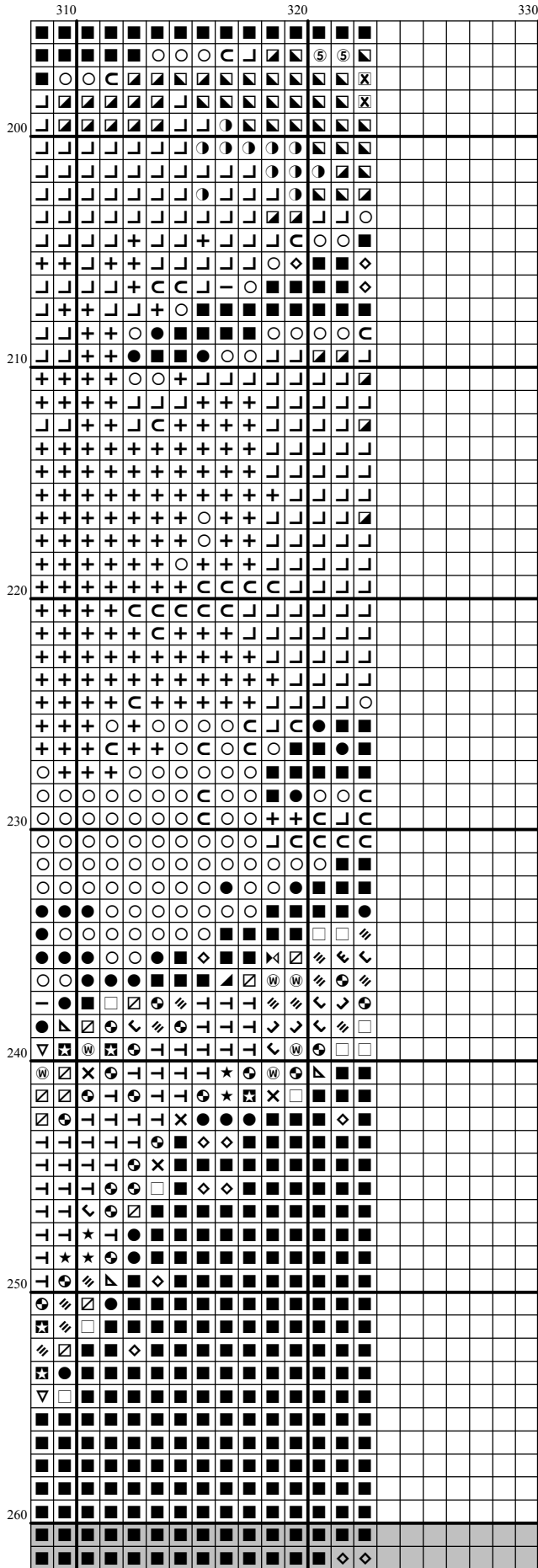


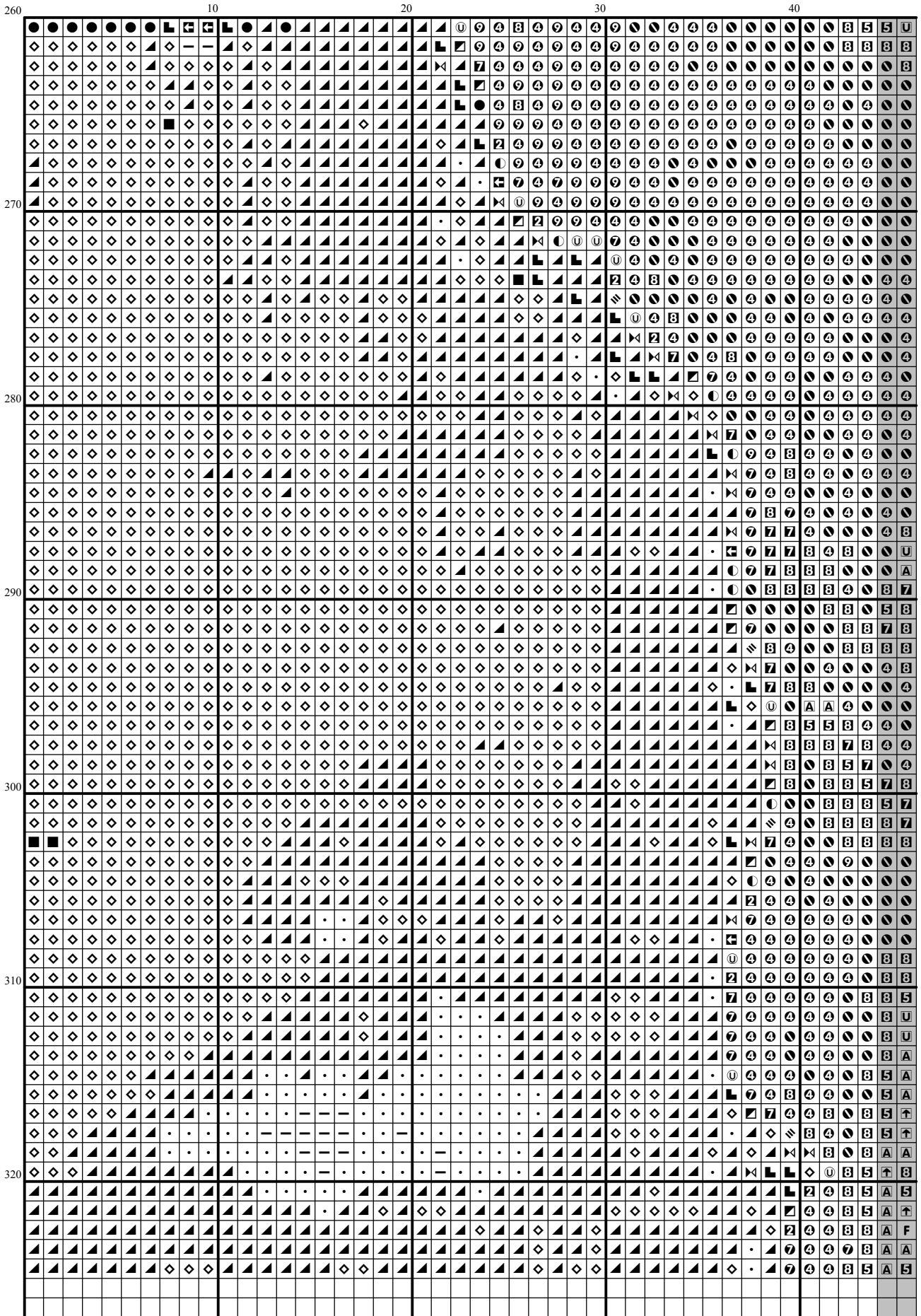




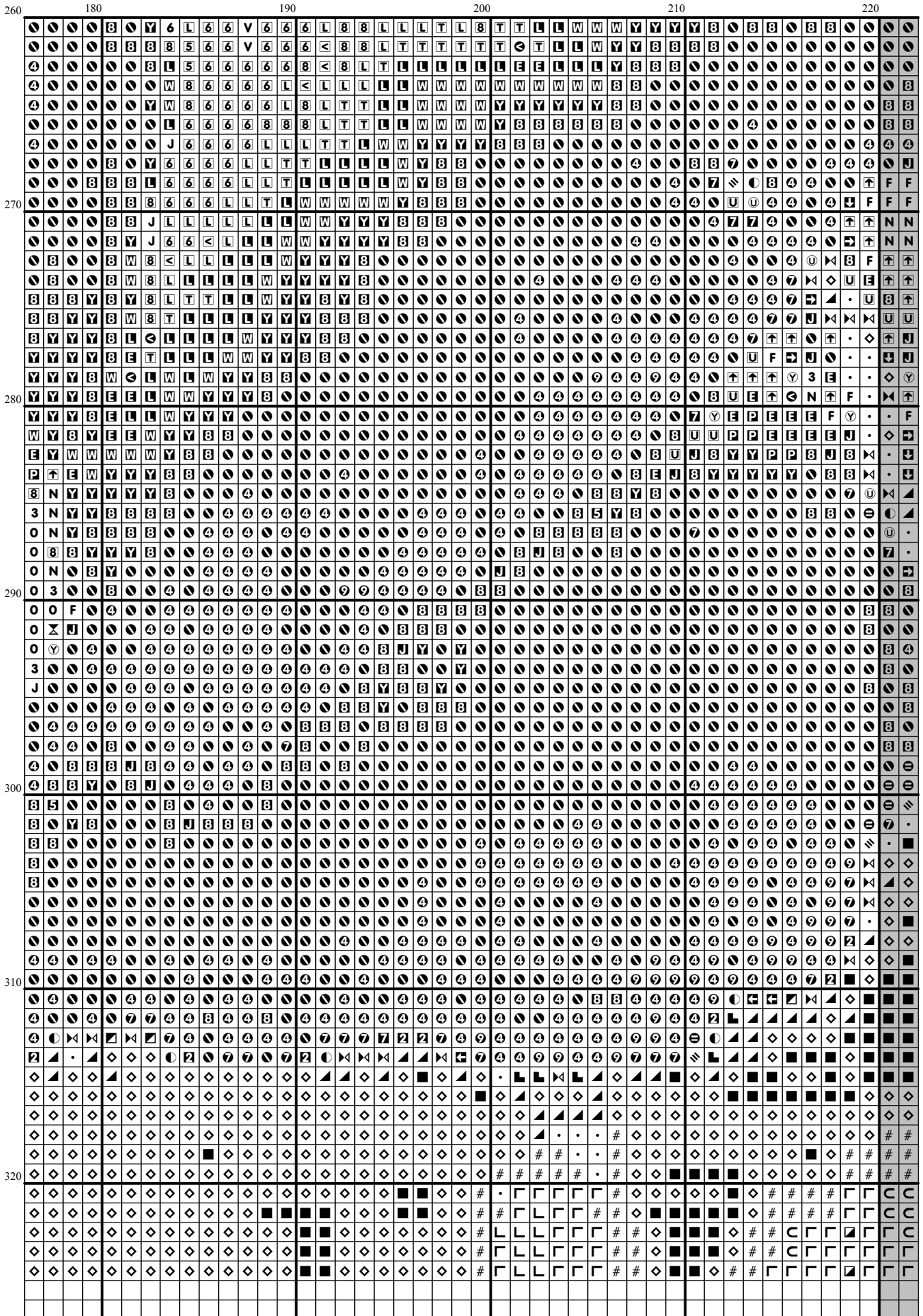


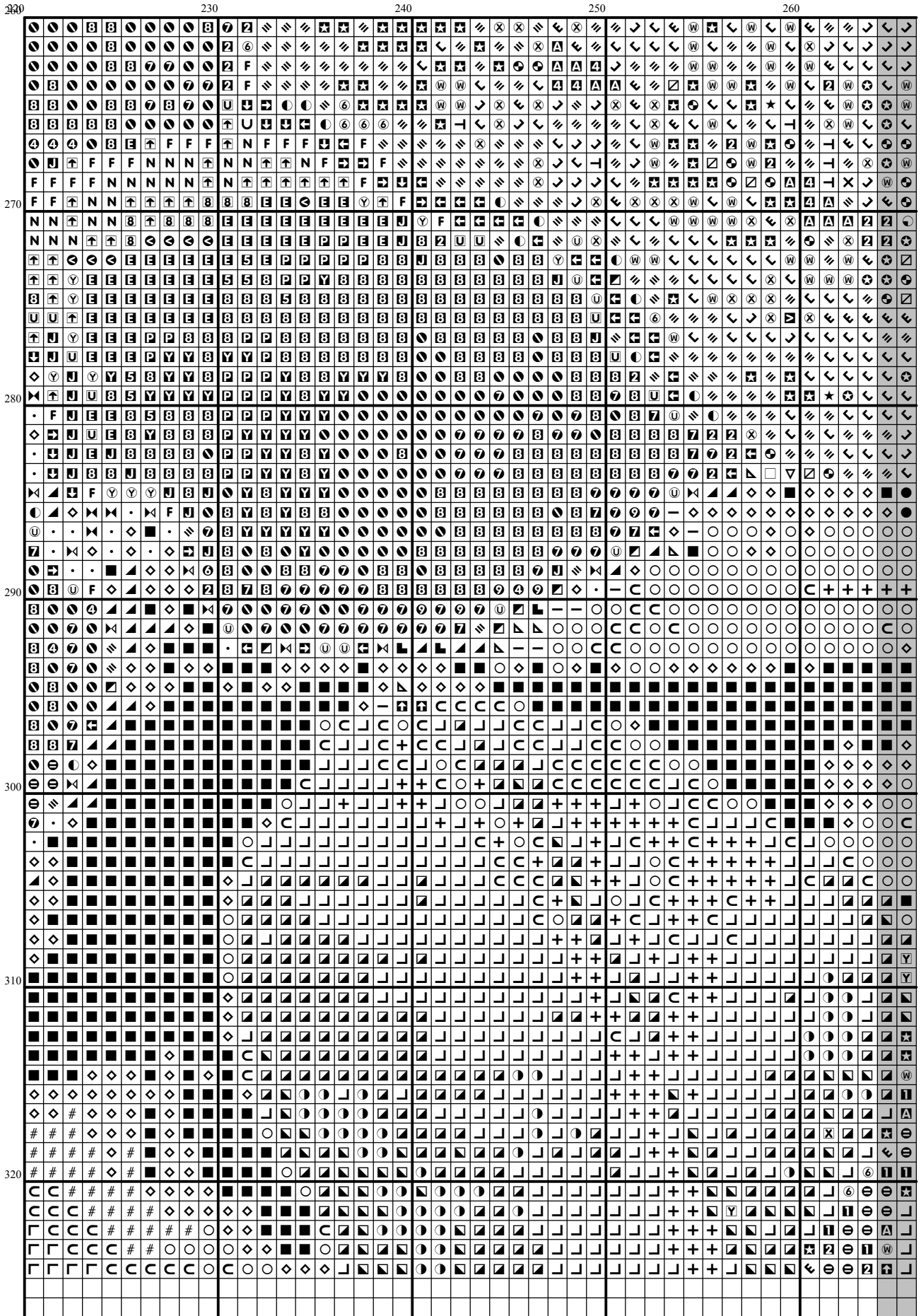


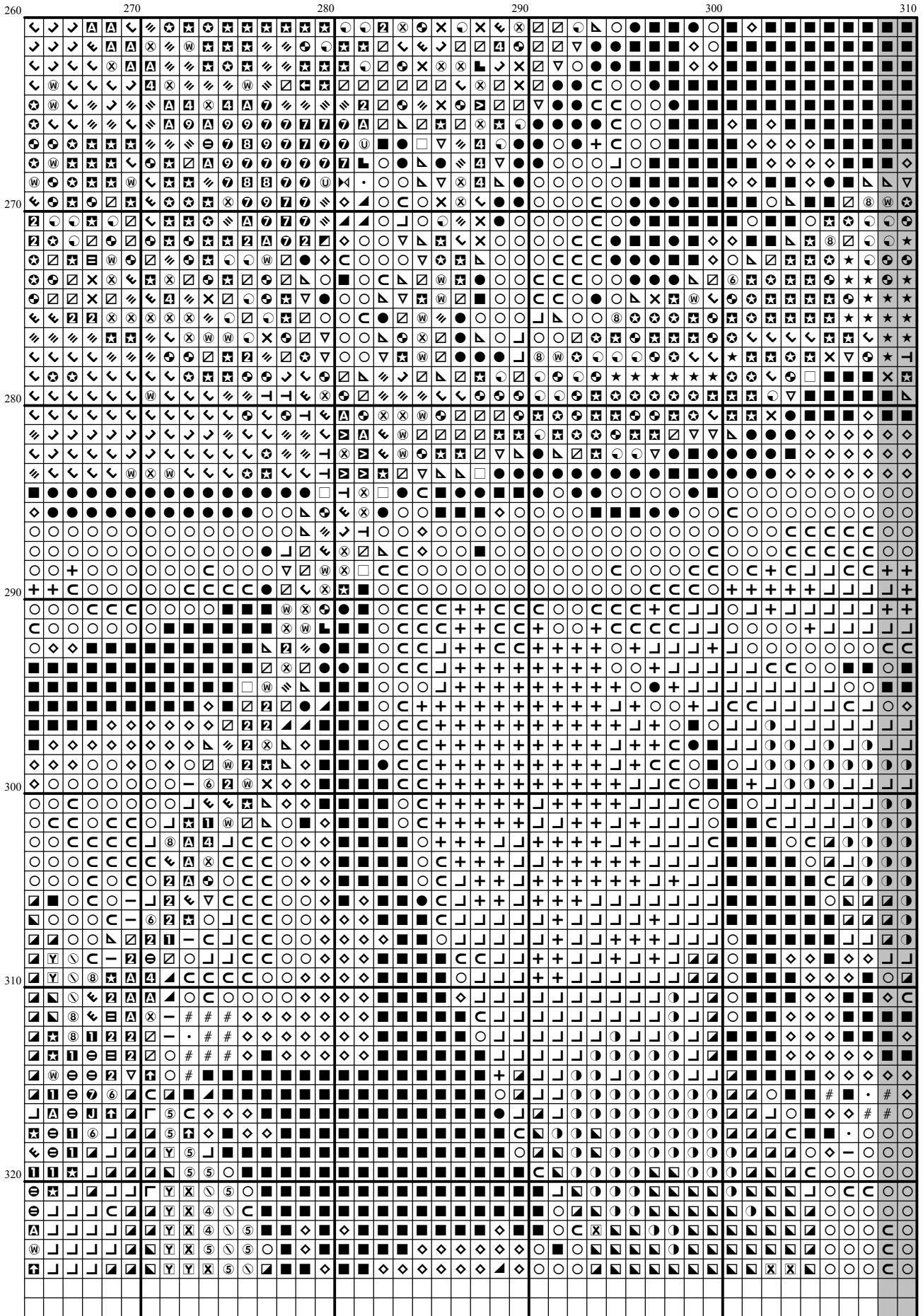


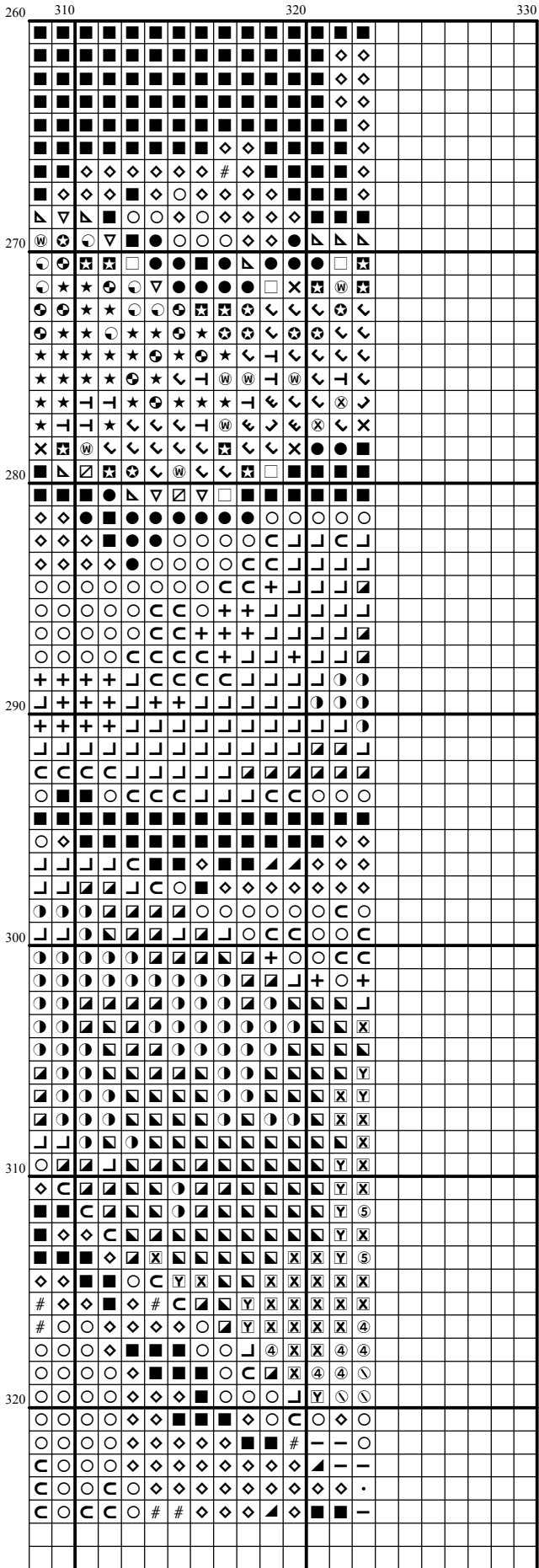


260	50	60	70	80	90
260	50	60	70	80	90
270					
280					
290					
300					
310					
320					









Instructions and Symbol Key for Design "FR 330 Tree Peony"

Fabric: 14 count Cream Aida

Stitches: 323 x 325 **Size:** 23.07 x 23.21 inches or 58.60 x 58.96 cm

Colours: DMC

Use 2 strands of thread for cross stitch

Sym	No.	Colour Name	Sym	No.	Colour Name
Ⓟ	151	Marshmallow rose	●	155	Mauve violet
Ⓢ	164	Pistachio green	●	169	Pewter grey
■	208	Pansy lavender	▲	209	Lilac
Ⓢ	210	Light violet	Ⓢ	211	Pale violet
J	223	Medium dusty pink	Z	300	Mahogany
■	310	Black	U	315	Antique lilac
N	316	Heather lilac	■	317	Steel grey
□	319	Shadowgreen	○	320	Fern green
V	335	Dark rose	P	350	Red vermillion
▤	352	Salmon	o	355	Brown red
H	356	Medium terracotta	⊕	368	Nile green
Ⓛ	402	Pottery brown	L	413	Iron grey
/	420	Hazelnut	Ⓢ	451	Shell pink grey
Ⓢ	452	Pigeon grey	L	469	Dark moss green
▤	470	Olive green	⑤	471	Tarragon green
⊙	472	Bud green	▤	502	Blue green
⚡	503	Thyme green	▴	520	Dark fern green
⑥	523	Ash green	⋈	535	Stone grey
⊕	543	Shell beige	4	552	Violet
▤	553	Amethyst violet	U	554	Pastel violet
↙	563	Celadon green	↙	564	Light malachite green
▤	581	Grashopper green	↘	598	Lagoon turquoise
T	604	Hyacinth pink	⊗	632	Cocoa
I	644	Light green grey	Ⓢ	648	Pepper grey
⊕	703	Springtime green	⊕	712	Cream
Ⓢ	729	Honey gold	Ⓢ	733	Golden green
Ⓢ	738	Sahara cream	▤	760	Grenadine pink
⊕	762	Pearl grey	▲	775	Summer rain blue
E	778	Antique mauve	7	780	Chestnut tree brown
\	782	Wicker brown	Ⓢ	783	Old gold
#	801	Mink brown	●	818	Powder pink
└	830	Green oak brown	③	833	Brass
Ⓢ	834	Light brass	L	869	Coffee brown
●	890	Deep forest green	+	905	Parrot green
●	906	Apple green	⊗	907	Granny Smith green
★	913	Jade green	↗	919	Red copper
1	920	Ochre copper	<	921	Burnt ochre orange
7	922	Terracotta	⚡	927	Oyster grey
2	928	Light pearl grey	▴	934	Algae green
C	937	Moss green	N	945	Eggshell cream
Ⓢ	950	Beige	E	955	Pale green
6	961	Dusty rose	L	962	Light dusty rose
Ⓢ	966	Baby green	2	976	Nutmeg brown
4	977	Caramel brown	∇	987	Basil green
→	988	Forest green	Ⓢ	989	Fennel green
└	993	Light green	·	3021	Cliff grey
Ⓢ	3033	Antique silver	Ⓢ	3041	Medium lilac
Ⓢ	3052	Silver green	5	3328	Dark salmon

○	3345	Dark Hunter Green	⊖	3348	Lettuce heart green
■	3354	Hydrangea pink	—	3362	Fig tree green
◇	3371	Ebony	⊙	3608	Medium pink plum
⊞	3609	Light pink plum	6	3687	Raspberry mauve
⊠	3688	Pink mauve	Y	3689	Rose petal pink
⊙	3705	Pale red	5	3712	Blush pink
3	3722	Rosebush pink	7	3743	Pale lilac
⊞	3752	Light porcelain blue	⊙	3756	Cloud blue
⊞	3811	Waterfall blue	⊗	3813	Light green
X	3815	Eucalyptus Green	⊙	3816	Snake green
④	3819	Light moss green	⊙	3828	Oaktree brown
>	3829	Ochre brown	S	3832	Strawberry
⊞	3836	Light grape	∩	3837	Deep violet
②	3852	Mustard yellow	Ⓟ	3856	Pale beechwood
⊞	3857	Dark red wine	⊞	3860	Taupe mauve
F	3861	Light taupe	E	3863	Otter brown
⊙	3864	Light mocha brown	⊙	5200	B Bright white

This chart has been designed and printed with our best intentions of being without mistakes. However, the possibility of human error, printing mistakes or the variation of individual stitching does exist, and we regret that we cannot be responsible for this.

Note: The shaded blocks on the chart represent overlapping stitches.
 Copyright © Classic Cross Stitch 2005 All rights reserved.