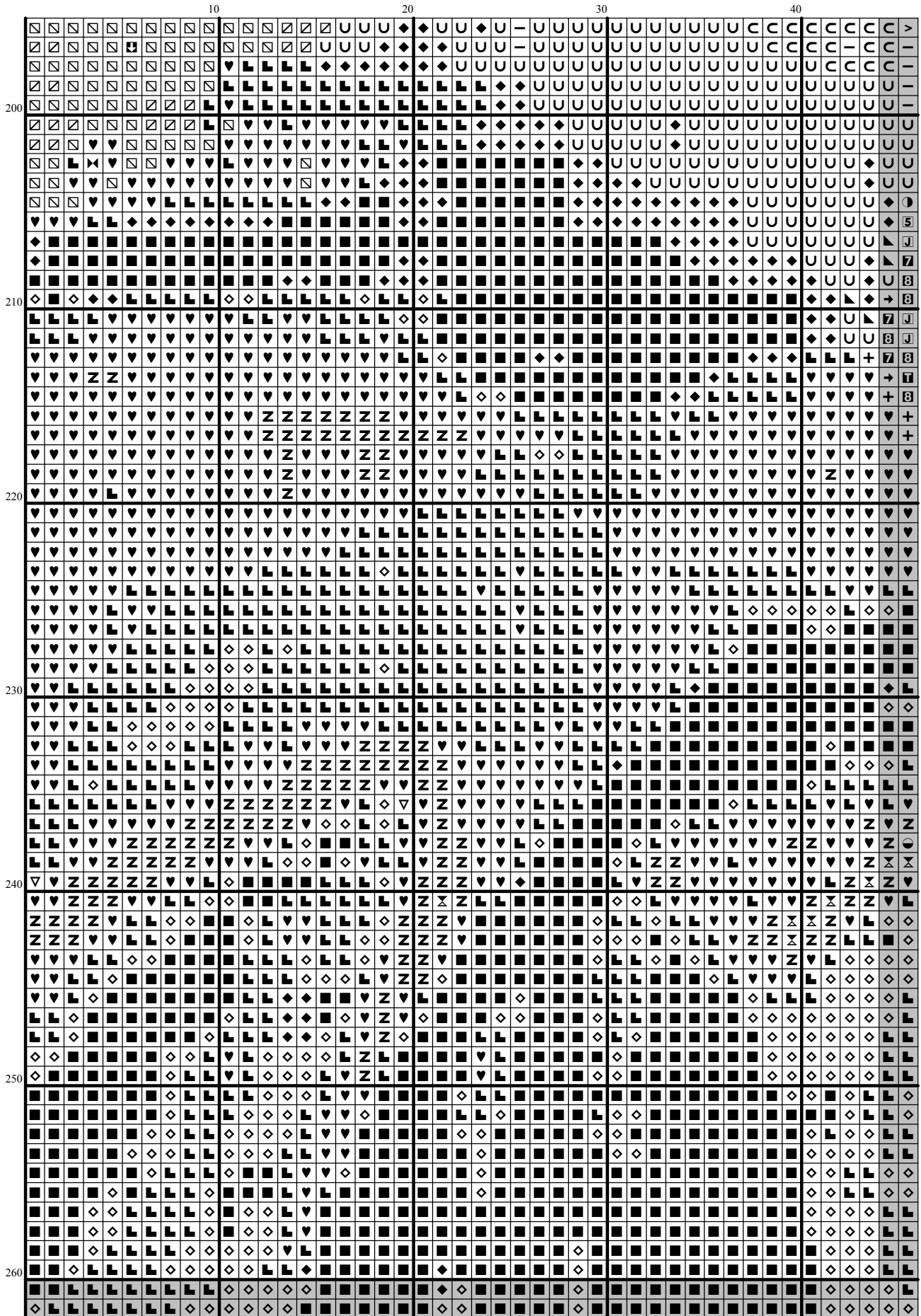
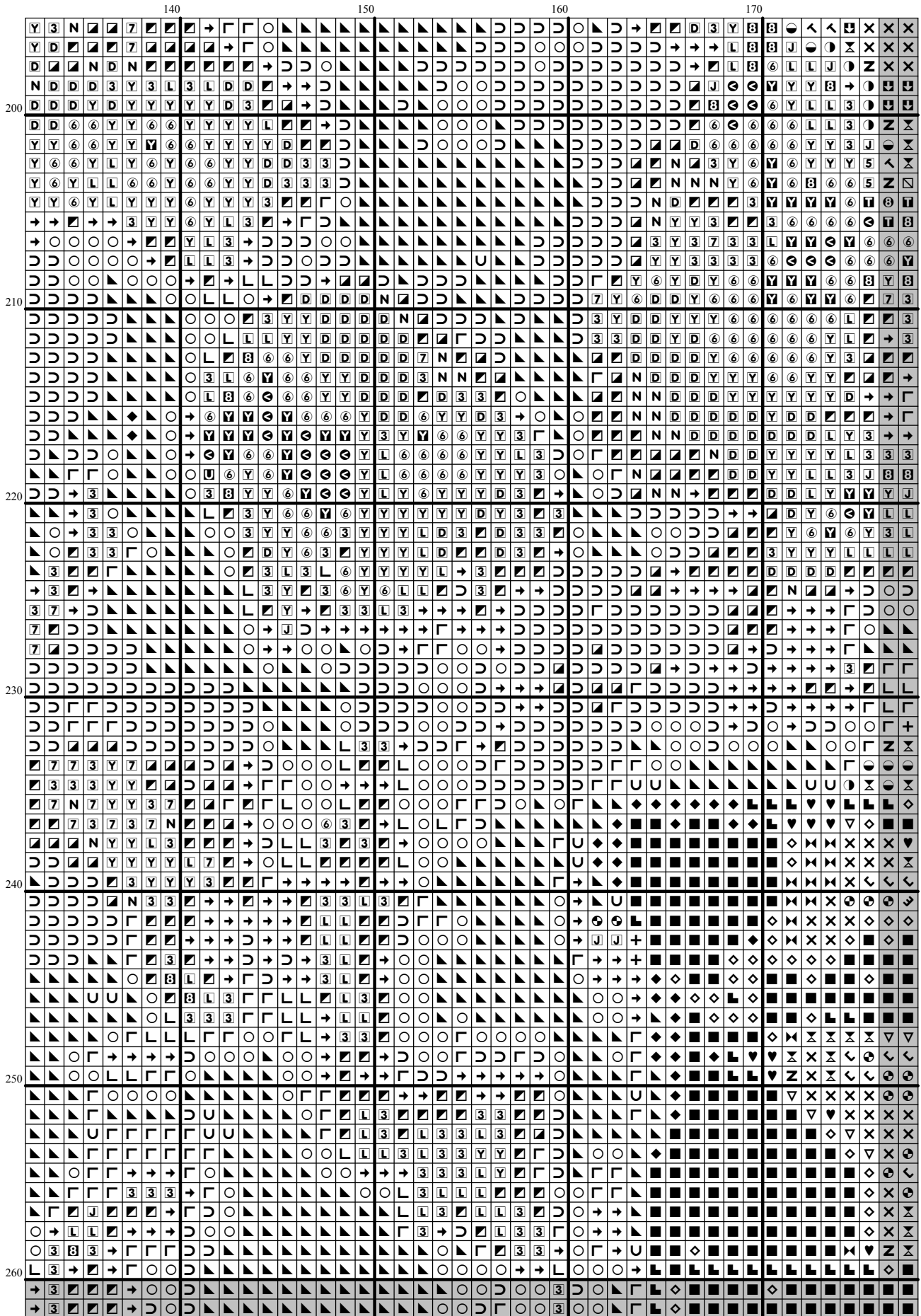
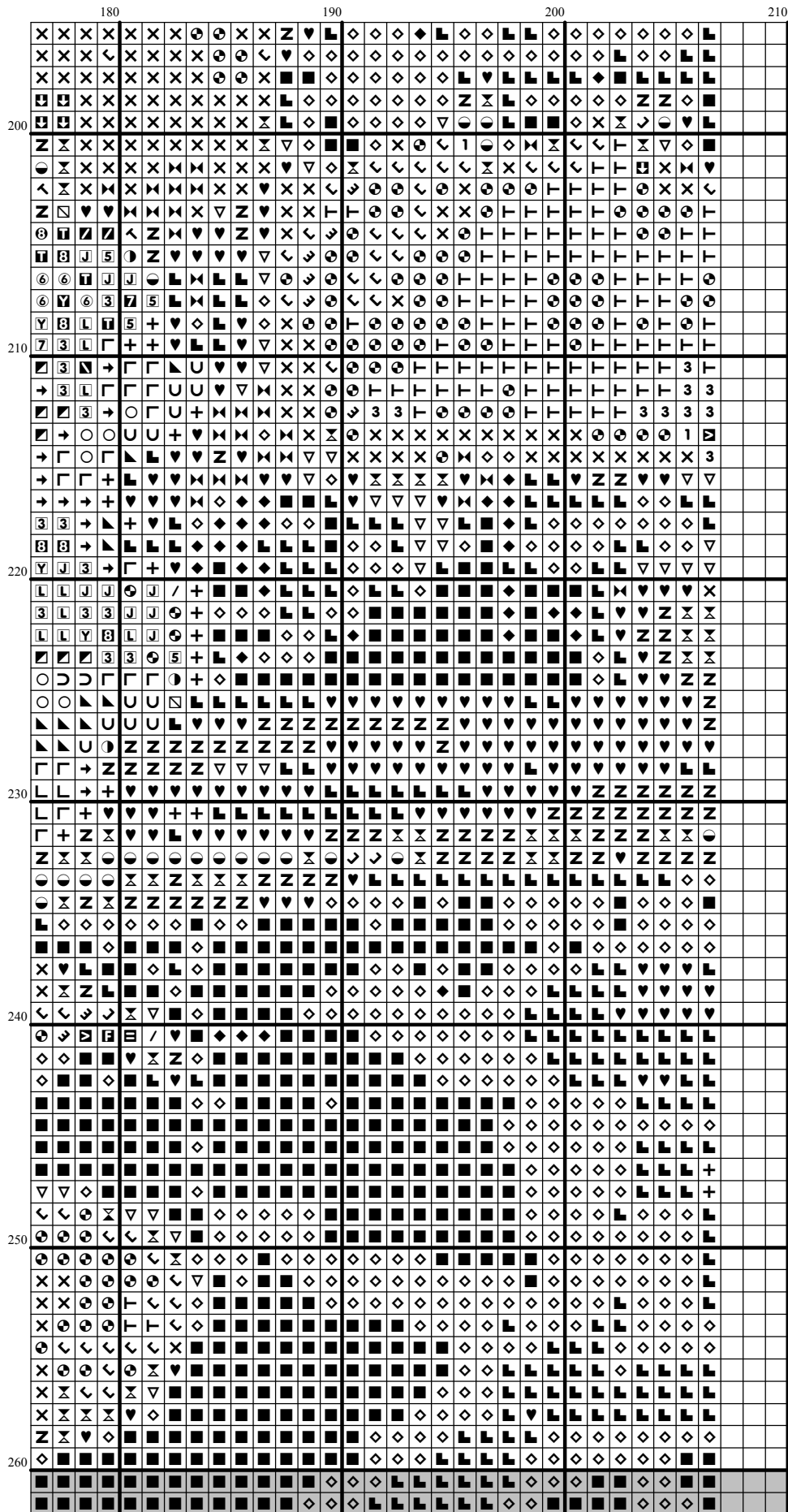
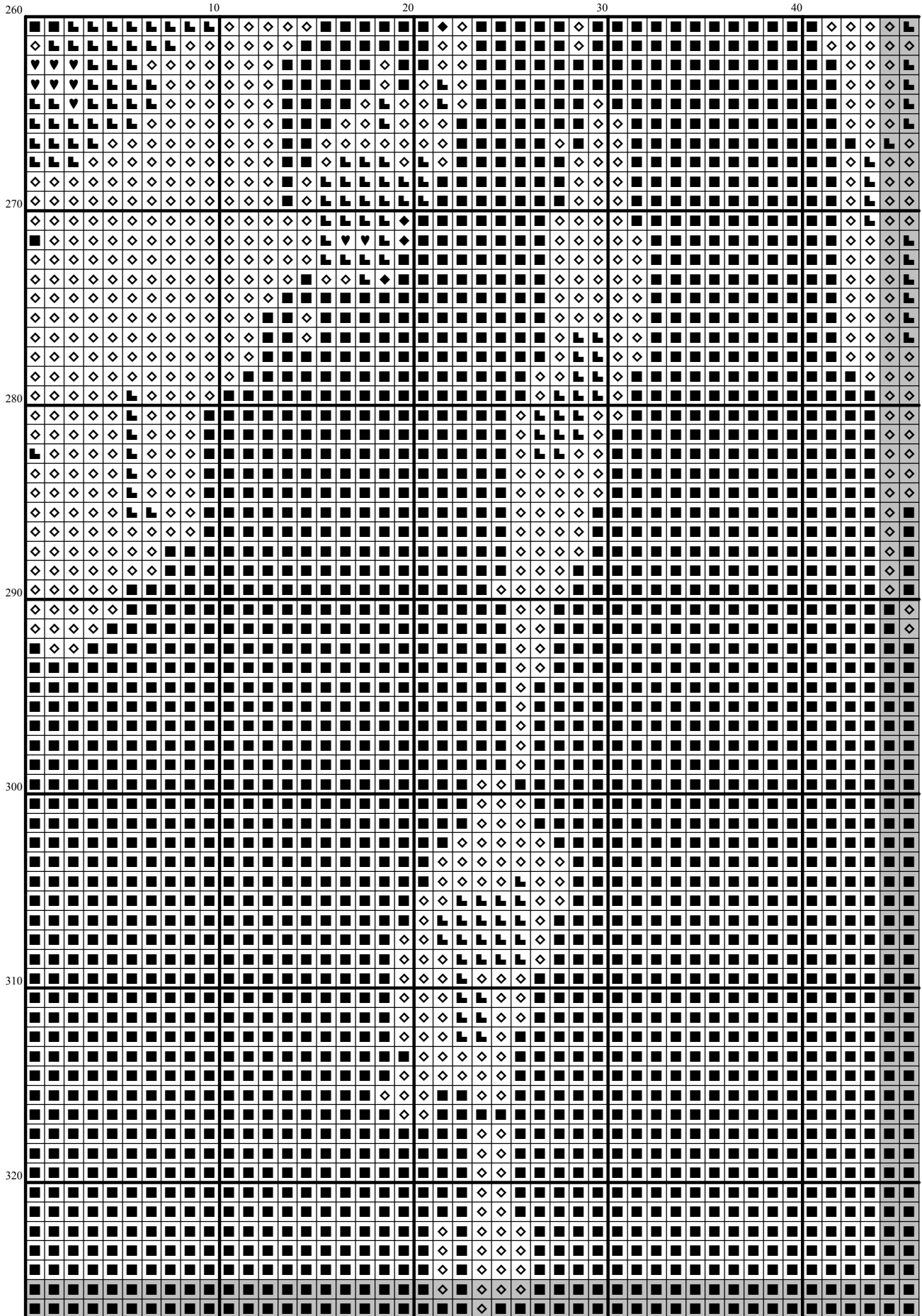


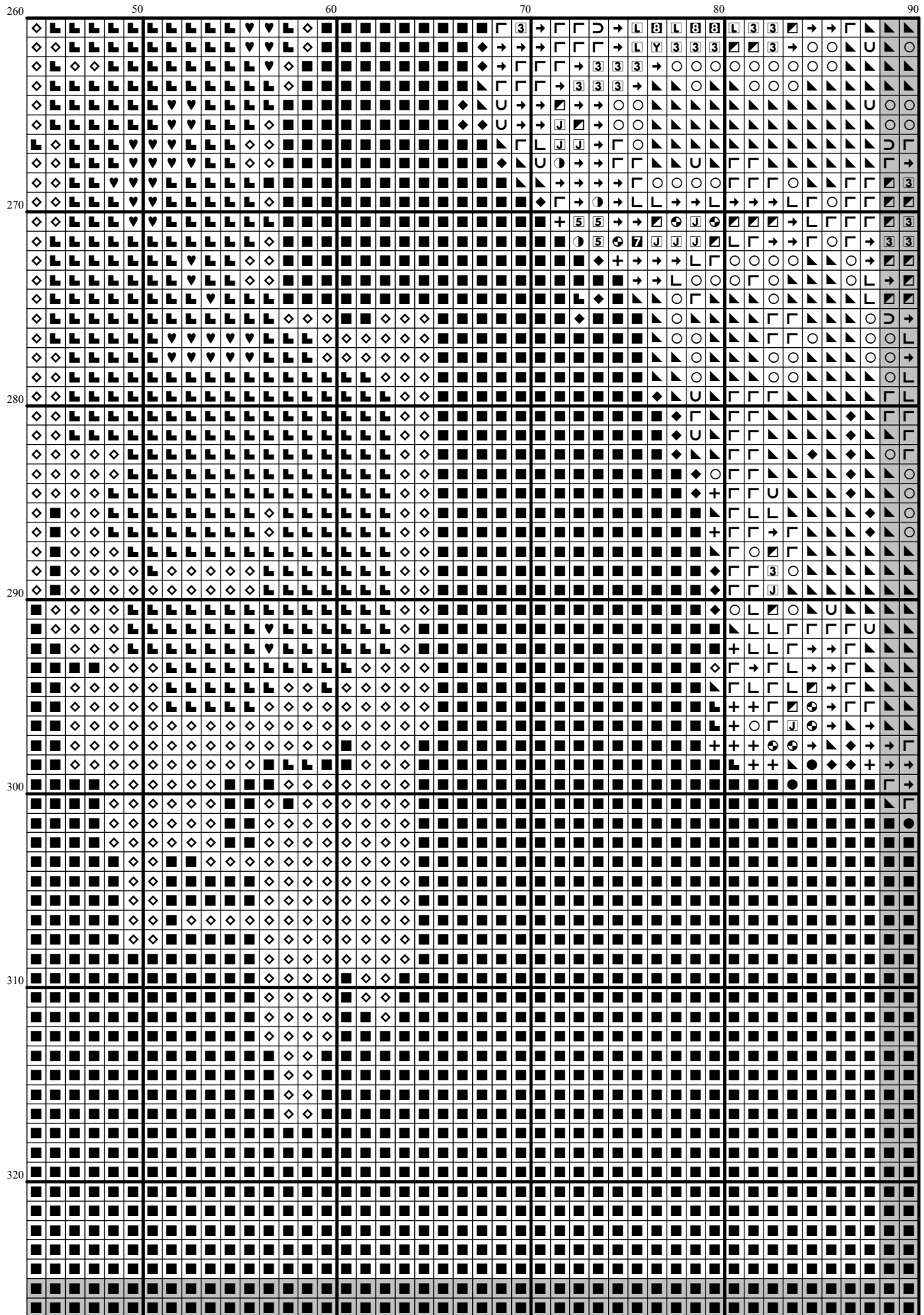
130	180	190	200	210
140	150	160	170	180
190				

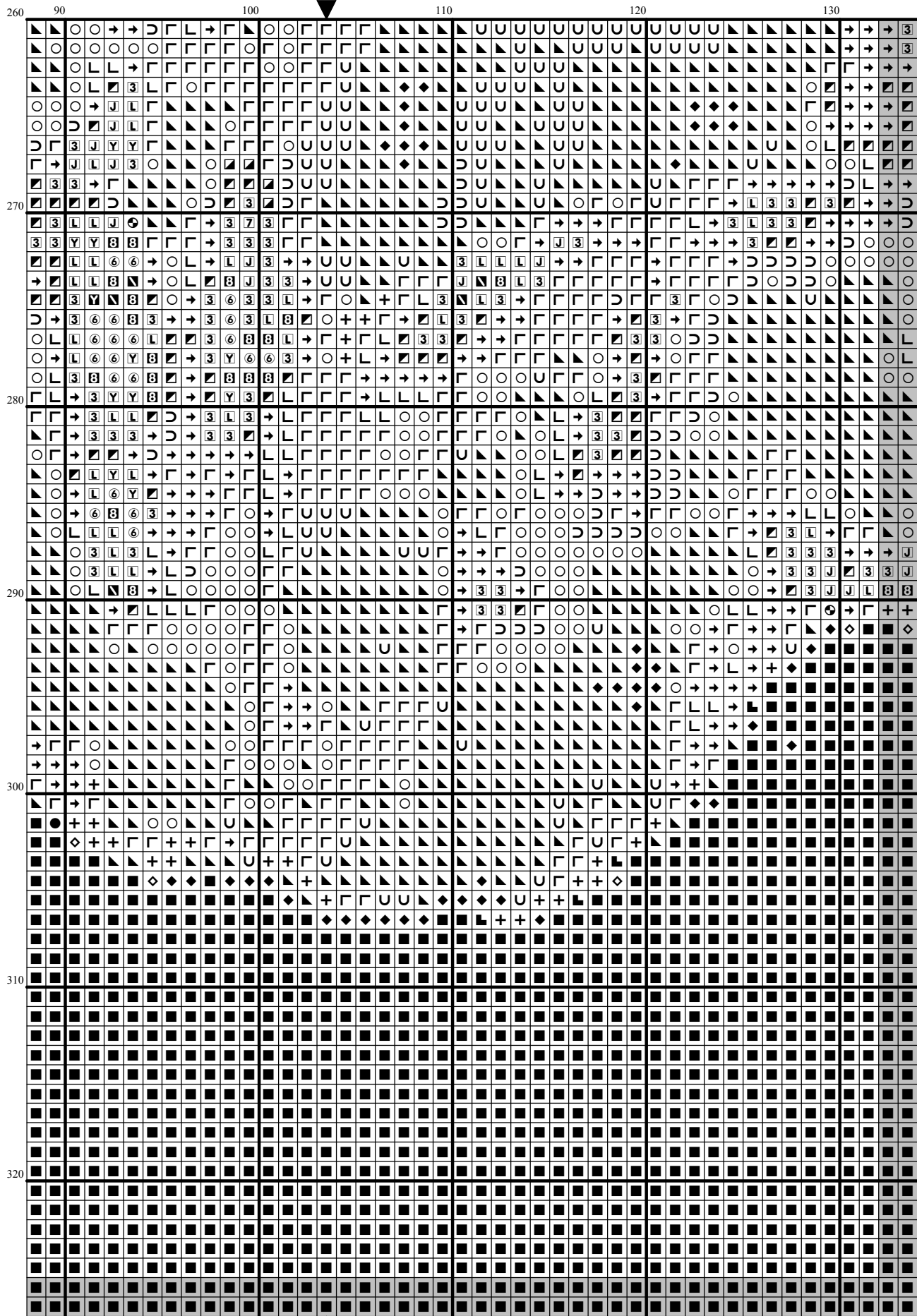


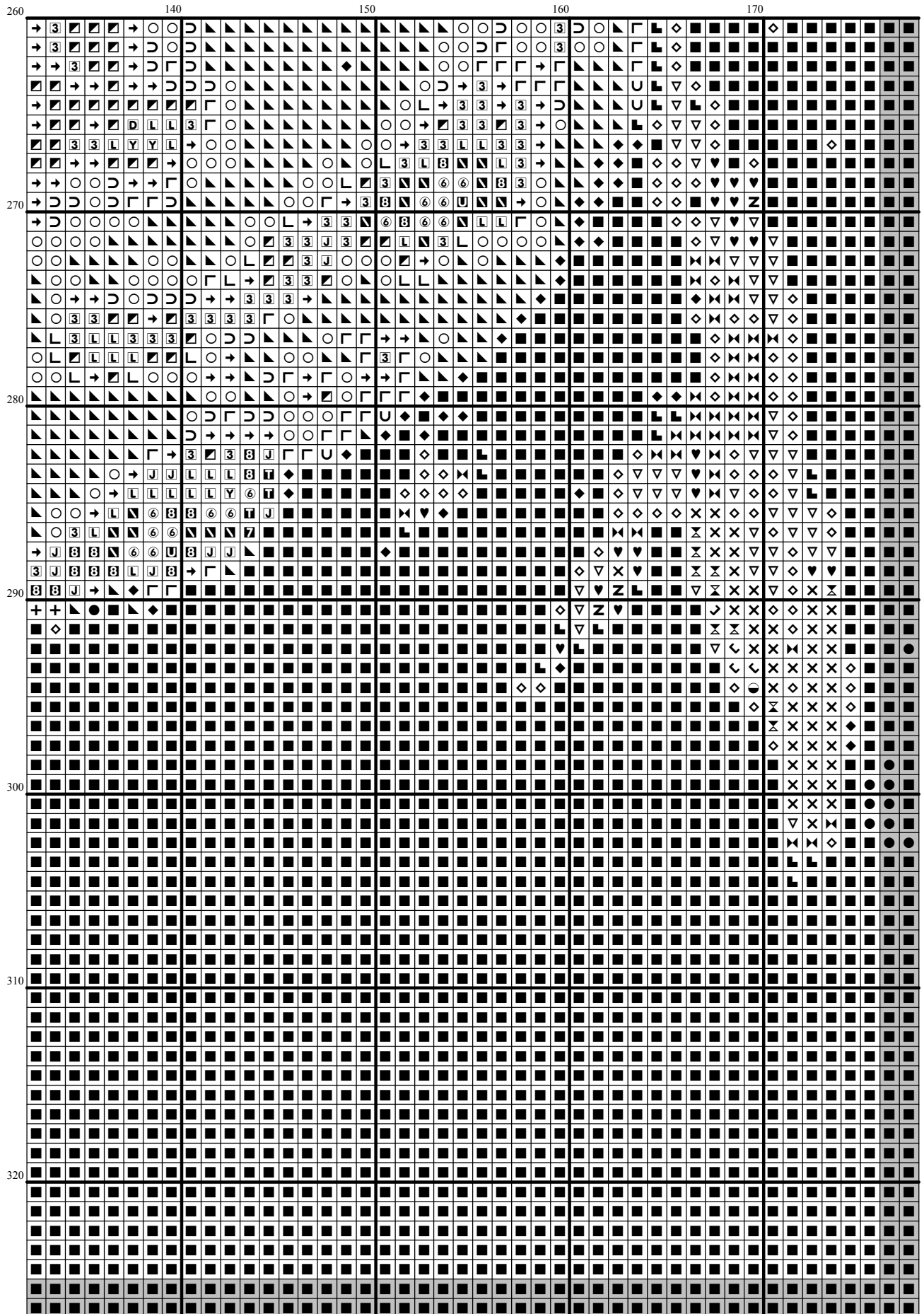


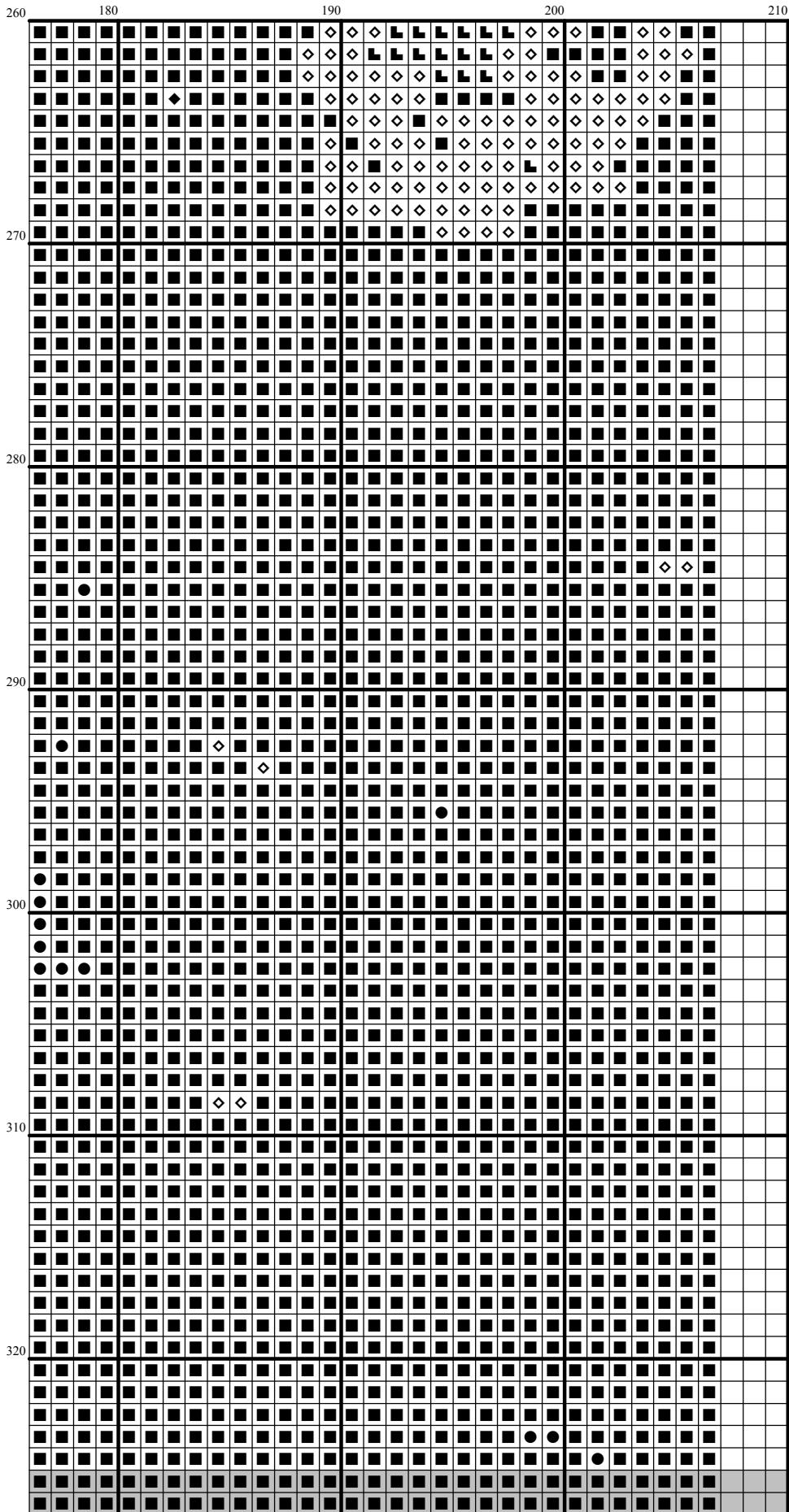


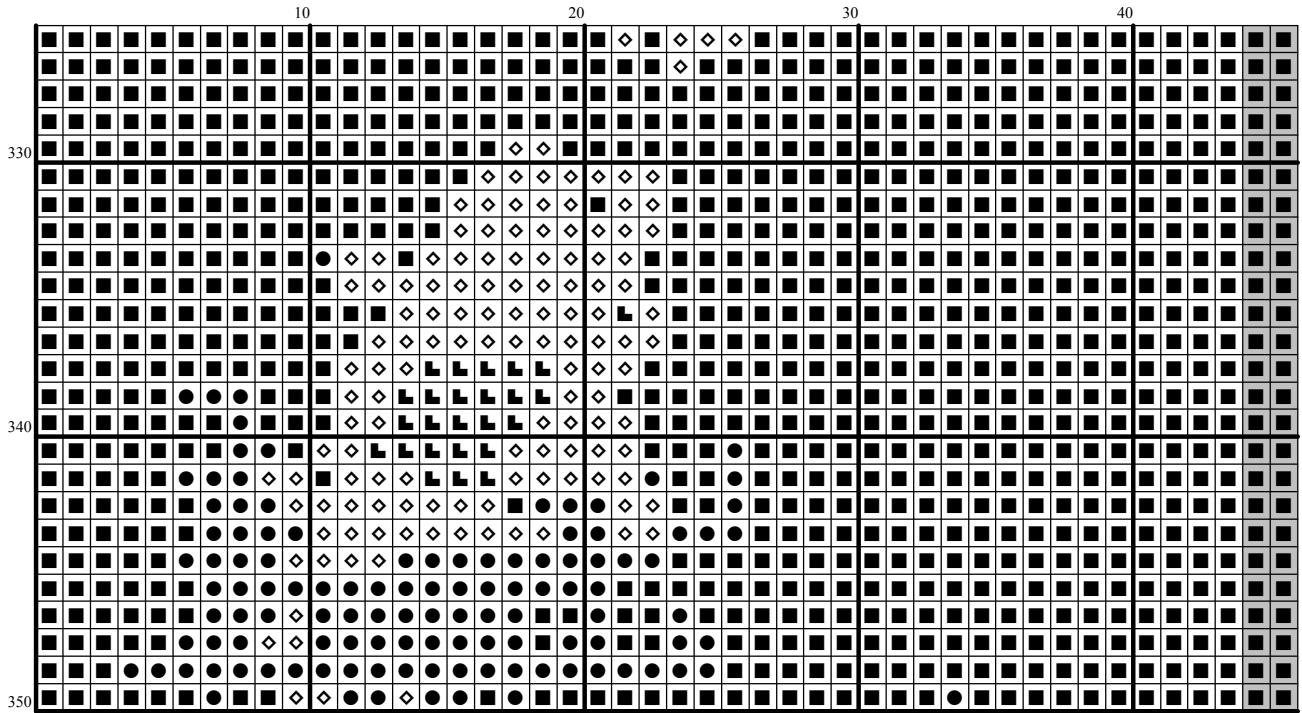


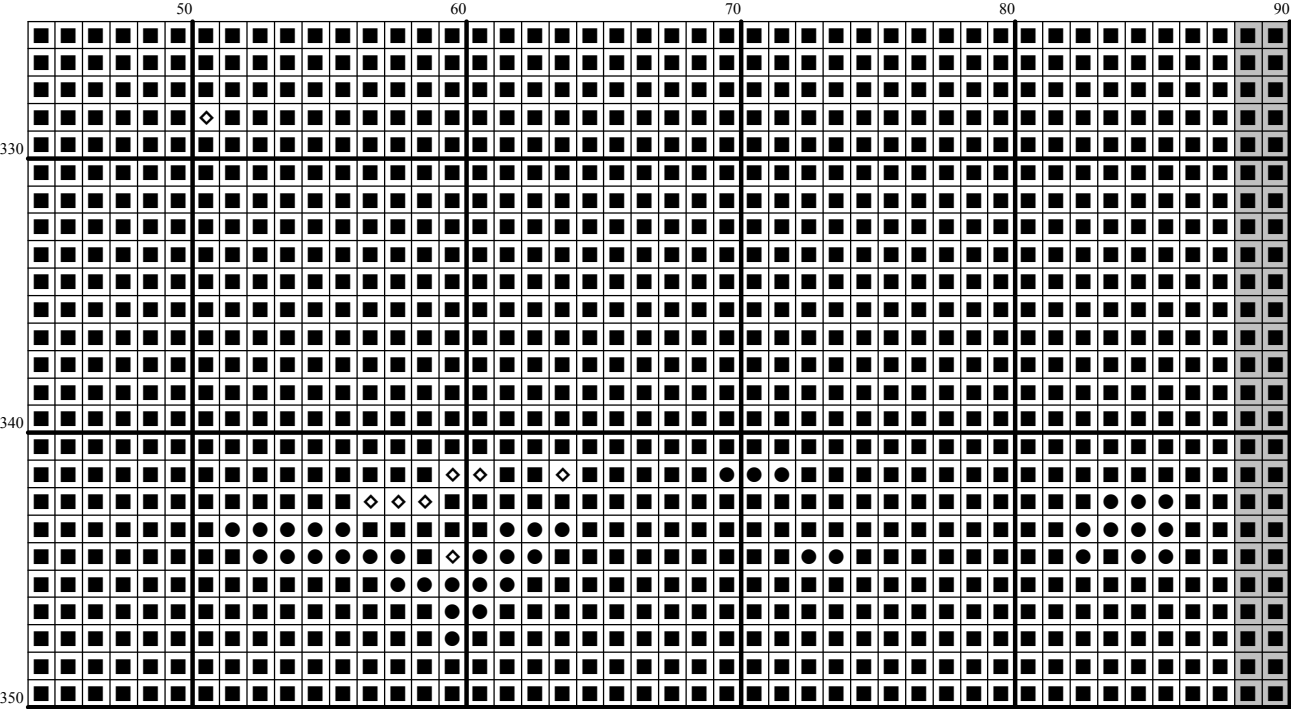


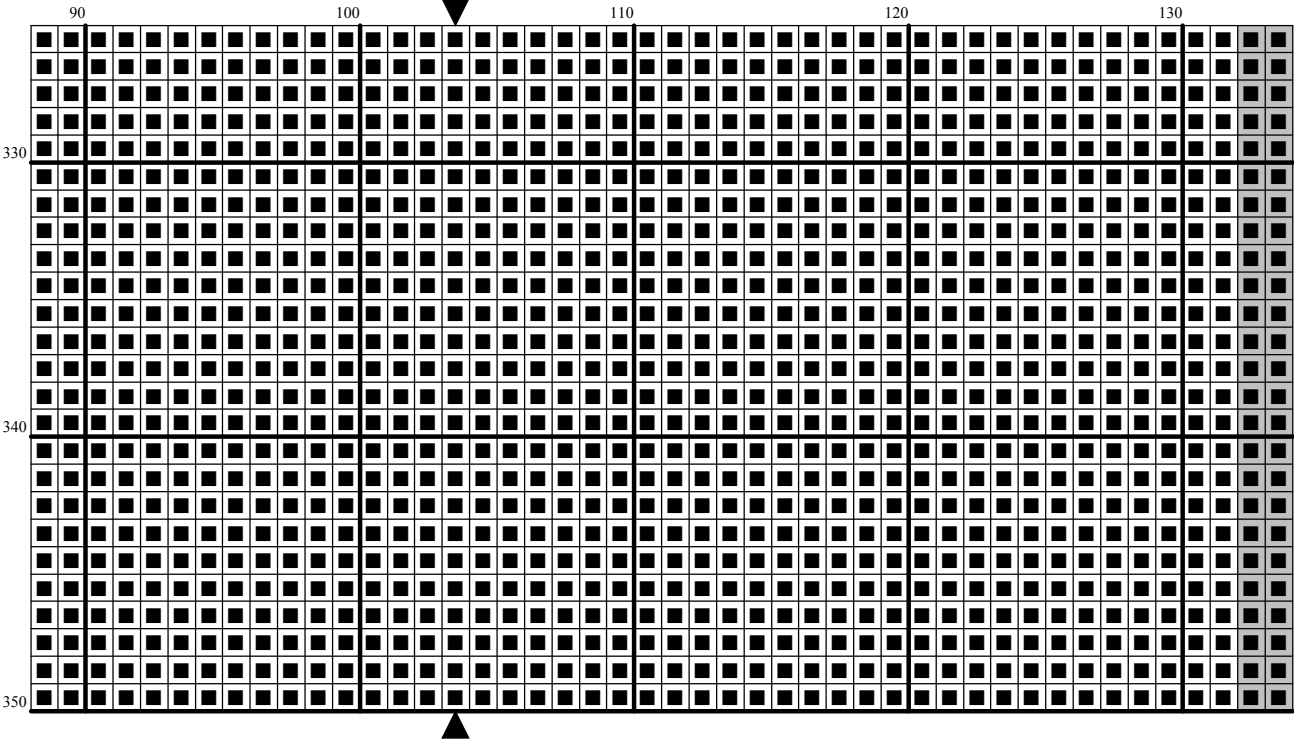


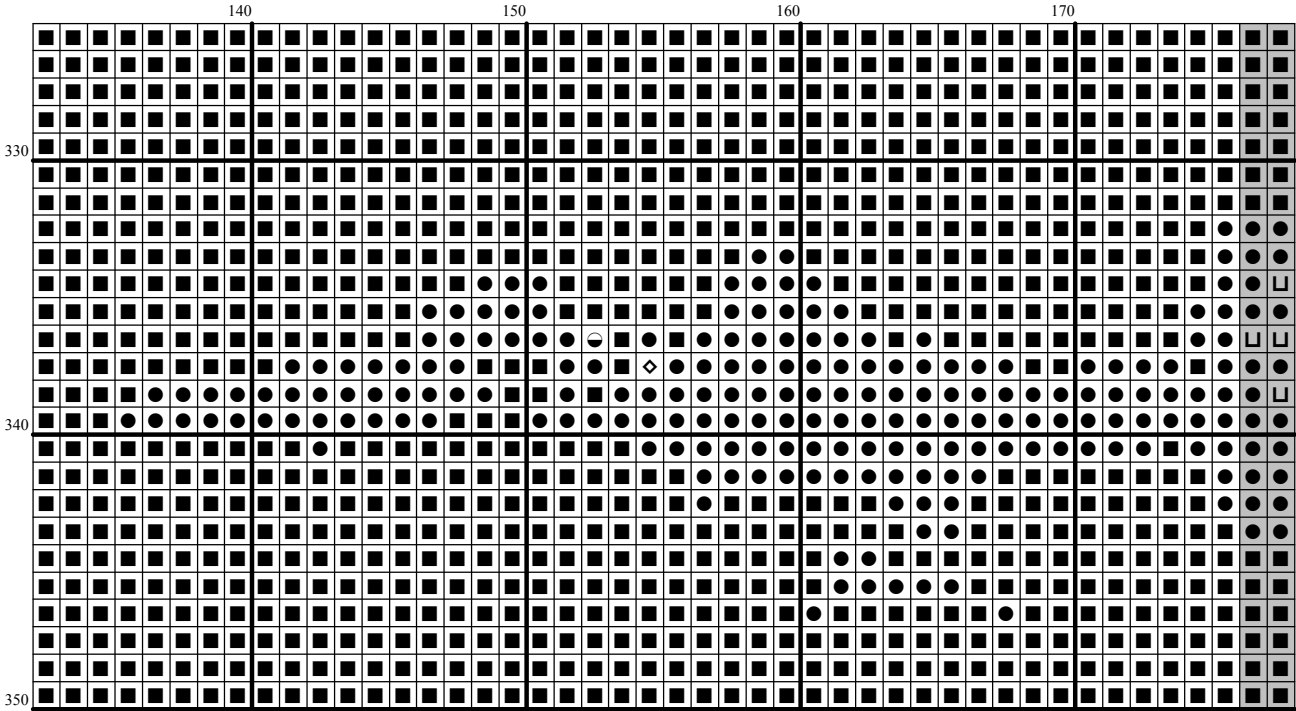


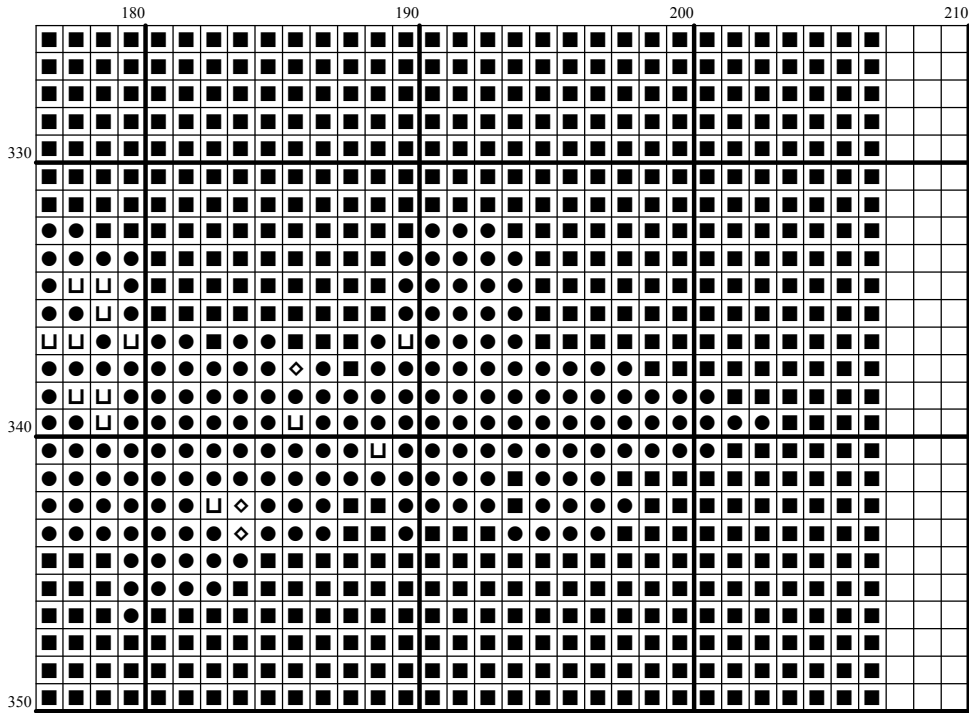












Instructions and Symbol Key for Design "FR259 Purple Peony"

Fabric: 14 count white Aida

Stitches: 207 x 350 **Size:** 14.79 x 25.00 inches or 37.56 x 63.50 cm

Colours: DMC

Use **2** strands of thread for cross stitch

Sym	No.	Colour Name	Sym	No.	Colour Name
Ⓜ	153	Lilac rose	▲	154	Prune rose
ⓔ	164	Pistachio green	Ⓜ	165	Pale moss green
Ⓦ	167	Dark mustard brown	Ⓛ	209	Lilac
Ⓝ	210	Light violet	Ⓤ	211	Pale violet
—	221	Mars red	■	310	Black
7	316	Heather lilac	Ⓛ	327	Dark violet
Ⓛ	336	Indigo blue	ⓐ	355	Brown red
6	356	Medium terracotta	ⓧ	367	Bay leaf green
4	371	Green plains	Ⓒ	400	Brown
↓	402	Pottery brown	9	407	Clay brown
8	436	Teddybrown	Ⓟ	437	Camel
Ⓛ	445	Light lemon	Ⓞ	451	Shell pink grey
7	452	Pigeon grey	Ⓢ	470	Olive green
Ⓝ	471	Tarragon green	Ⓜ	472	Bud green
Ⓩ	501	Pond green	●	502	Blue green
/	503	Thyme green	♥	520	Dark fern green
ⓔ	543	Shell beige	○	550	Blackcurrant
Ⓜ	552	Violet	3	553	Amethyst violet
8	554	Pastel violet	ⓧ	562	Malachite green
1	563	Celadon green	ⓔ	564	Light malachite green
9	644	Light green grey	Ⓜ	676	Savannah gold
4	677	Sand gold	Ⓞ	702	Fresh green
Ⓜ	703	Springtime green	Ⓝ	718	Magenta
Ⓜ	729	Honey gold	Ⓜ	730	Khaki green
Ⓜ	732	Bronze green	8	733	Golden green
Ⓝ	734	Light Olive green	ⓔ	746	Vanilla
ⓔ	747	Sea mist blue	ⓔ	762	Pearl grey
ⓐ	772	Celery green	Ⓦ	780	Chestnut tree brown
Ⓞ	818	Powder pink	Ⓜ	830	Green oak brown
9	833	Brass	Ⓢ	834	Light brass
Ⓜ	842	Beige rope	◇	890	Deep forest green
Ⓒ	898	Teak brown	ⓧ	904	Avocado green
↘	913	Jade green	Ⓜ	917	Bougainvillea fuschia
>	919	Red copper	Ⓜ	920	Ochre copper
Ⓞ	921	Burnt ochre orange	Ⓜ	928	Light pearl grey
Ⓜ	934	Algae green	●	939	Dark navy blue
Ⓝ	945	Eggshell cream	Ⓜ	950	Beige
3	954	Field green	Ⓜ	955	Pale green
Ⓜ	966	Baby green	Ⓝ	976	Nutmeg brown
∇	986	Dark forest green	↙	988	Forest green
9	993	Light green	Ⓜ	3046	Rye beige
Ⓝ	3051	Olive tree green	Ⓝ	3053	Tweed green
Ⓞ	3072	Pale pearl grey	Ⓜ	3345	Dark Hunter Green
Ⓜ	3346	Hunter Green	↖	3347	Insect green
Ⓝ	3348	Lettuce heart green	◆	3371	Ebony
Ⓜ	3607	Pink plum	Ⓜ	3608	Medium pink plum
6	3609	Light pink plum	Ⓜ	3685	Dark mauve
Ⓜ	3689	Rose petal pink	9	3756	Cloud blue

2	3772	Rosy tan	1	3776	Dark nutmeg brown
≡	3778	Light terracotta	+	3799	Anthracite grey
6	3813	Light green	↘	3816	Snake green
\	3817	Polar tree green	⦿	3823	Ivory
┌	3834	Grape	→	3835	Medium grape
J	3836	Light grape	●	3860	Taupe mauve
5	3861	Light taupe	⊕	3864	Light mocha brown
⦿	5200	B Bright white	⦿	ECRUT	ECRUT

This chart has been designed and printed with our best intentions of being without mistakes. However, the possibility of human error, printing mistakes or the variation of individual stitching does exist, and we regret that we cannot be responsible for this.

Note: The shaded blocks on the chart represent overlapping stitches.
 Copyright © Classic Cross Stitch 2004 All rights reserved.