

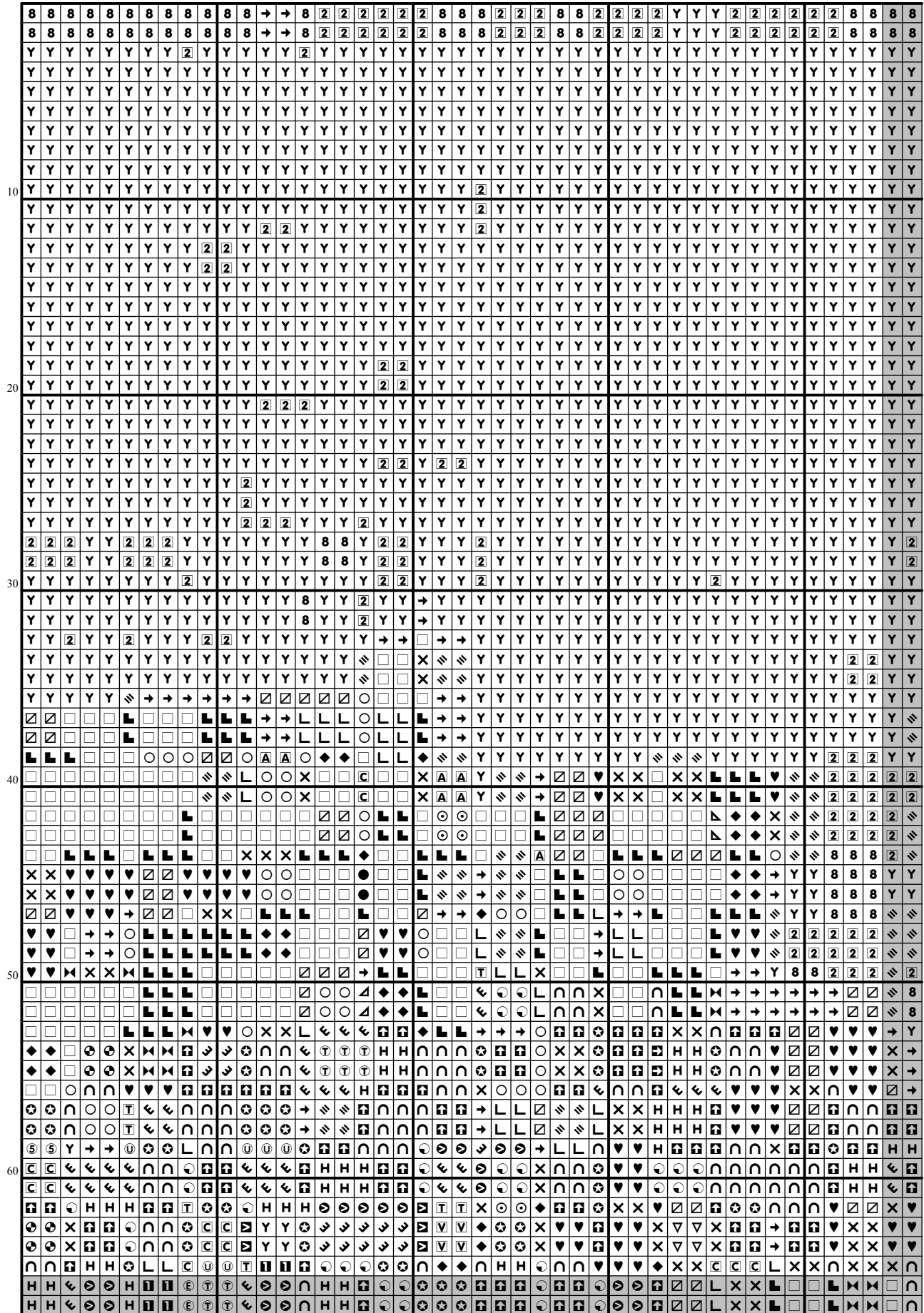
220

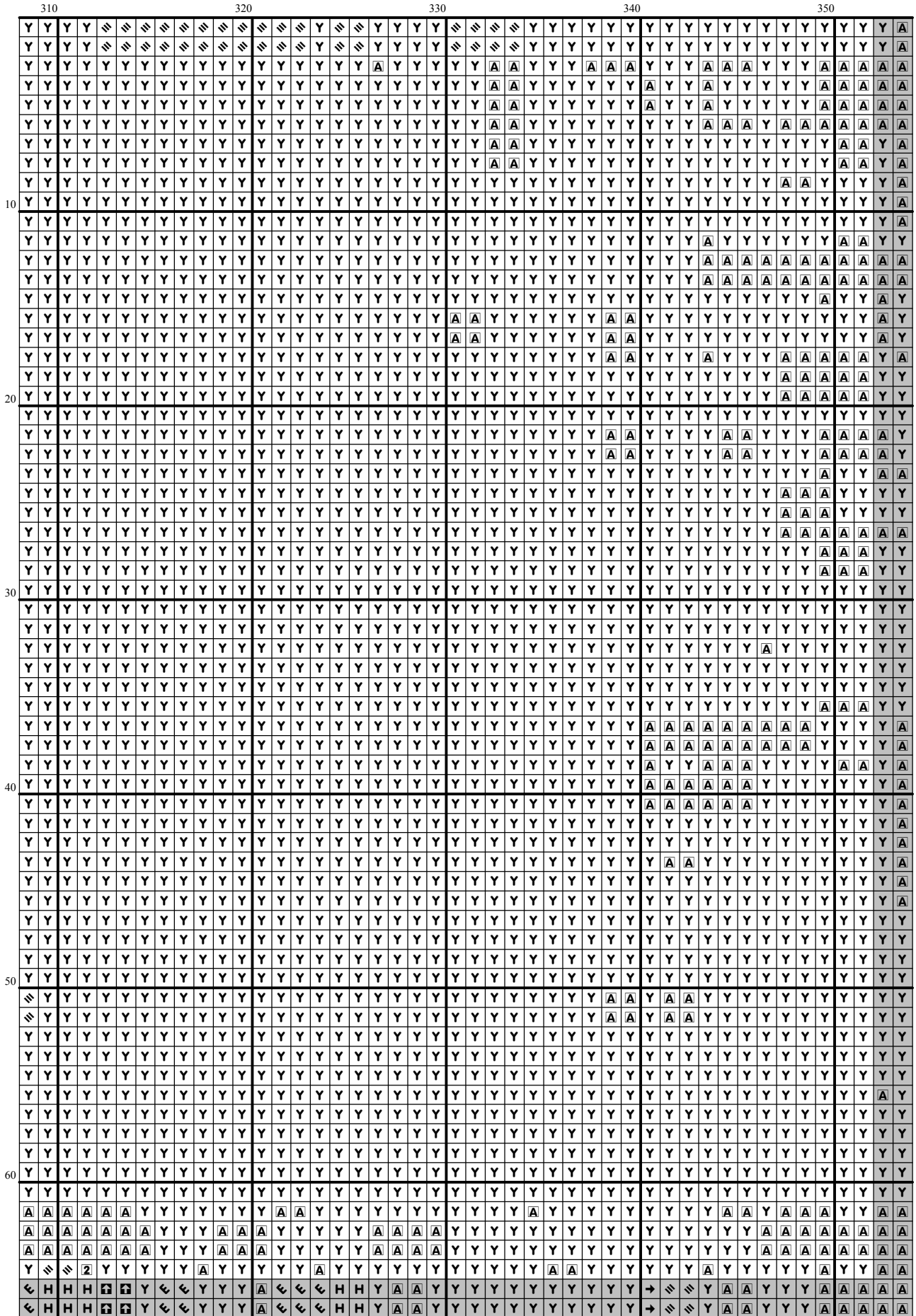
230

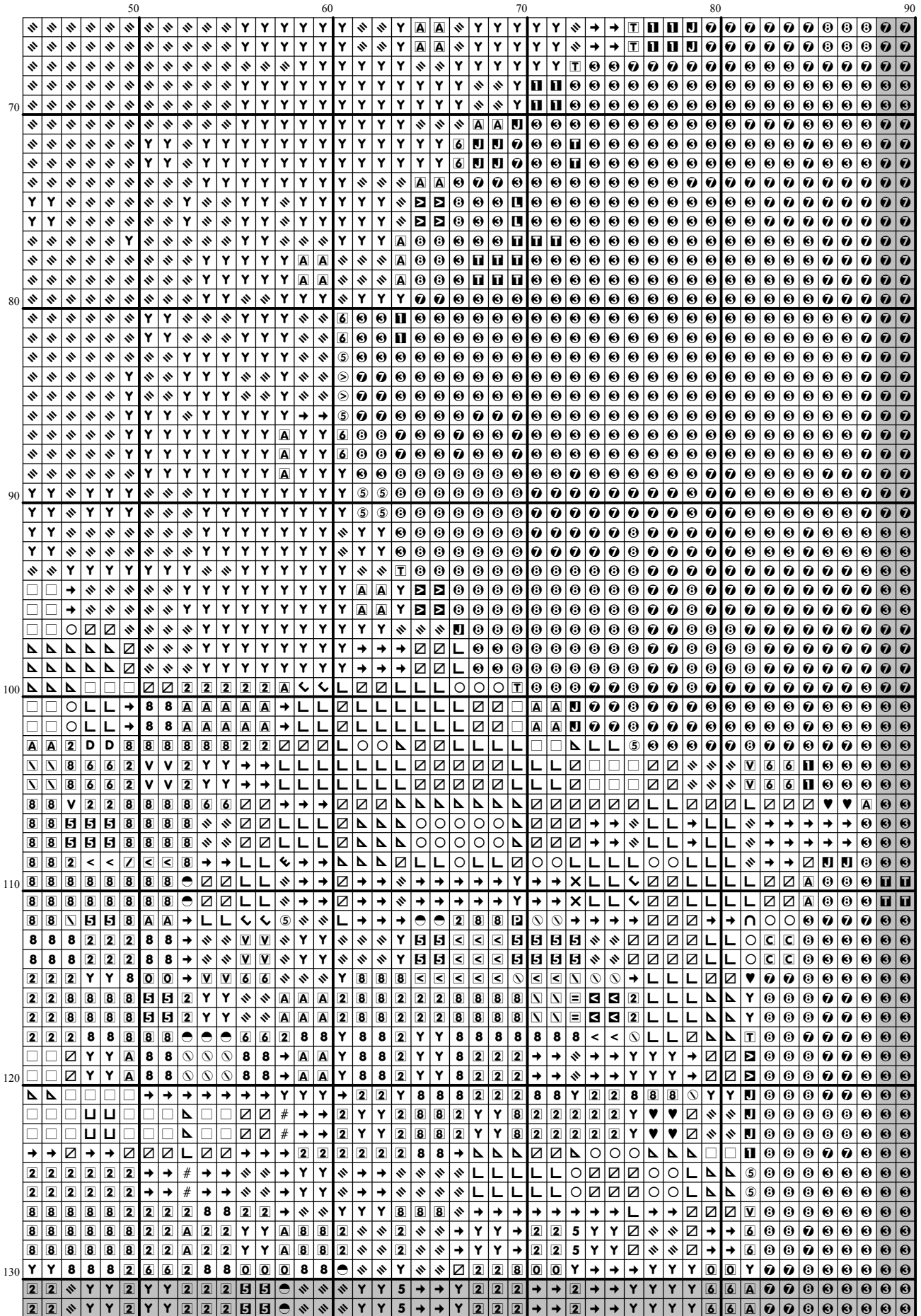
240

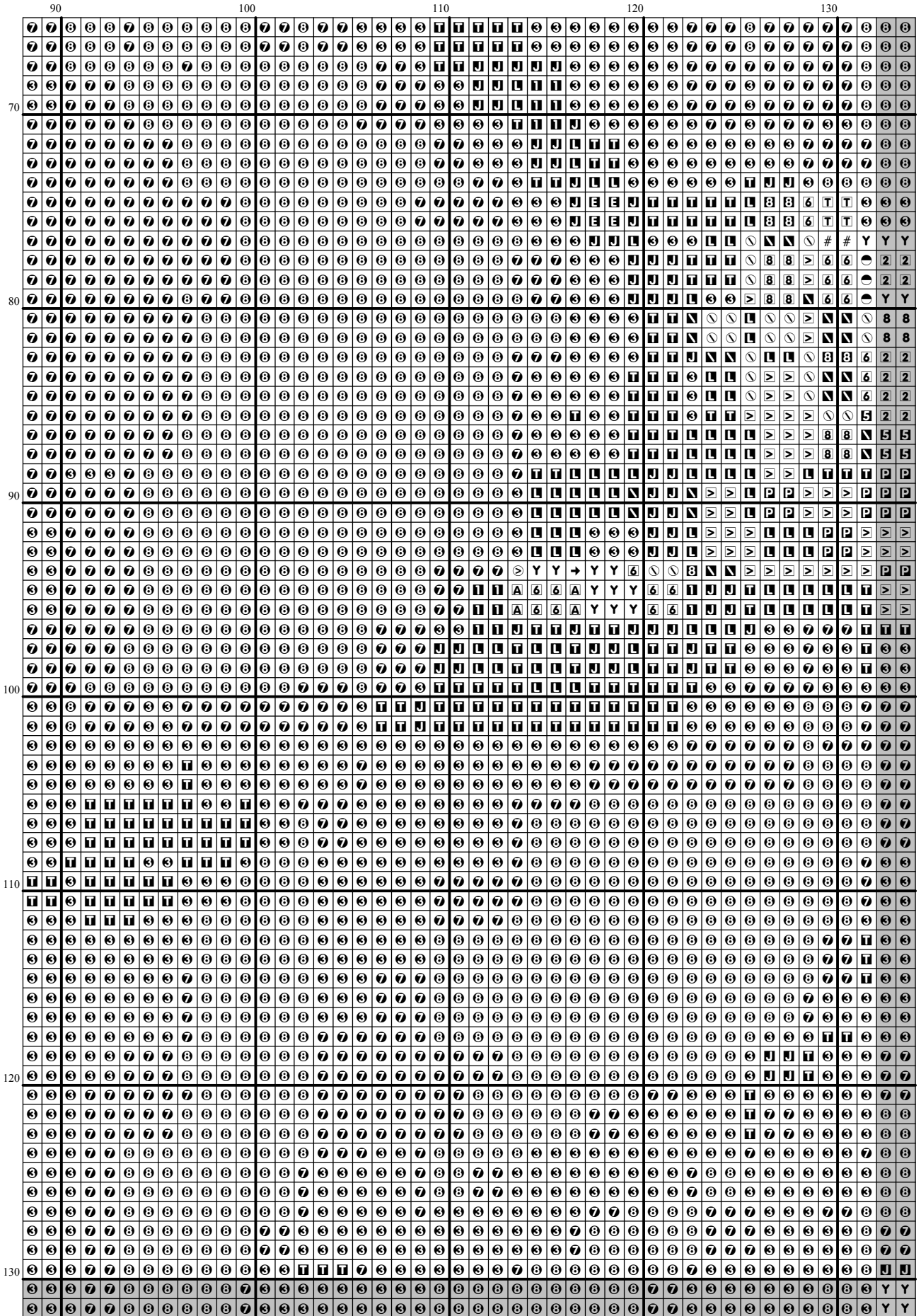
250

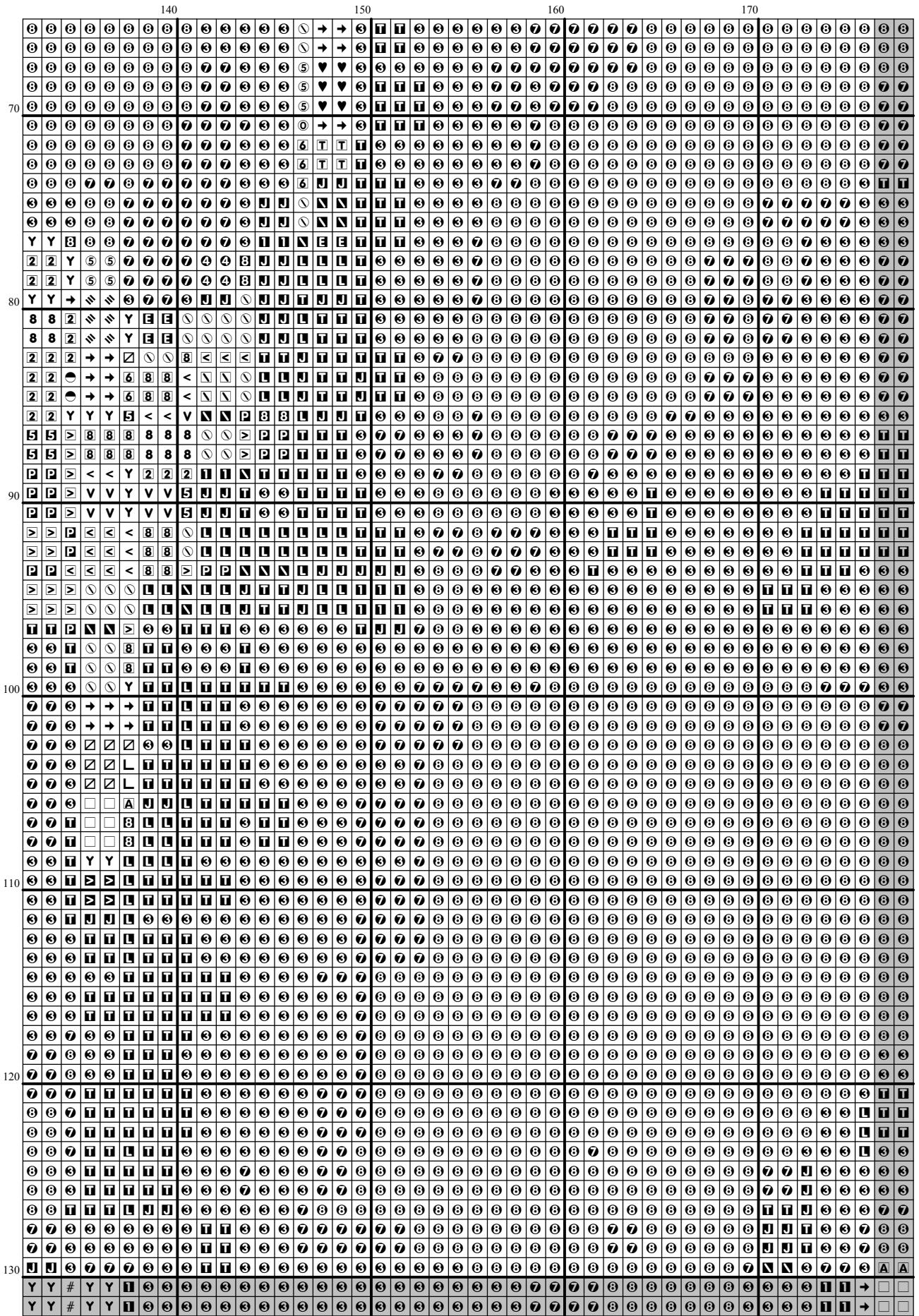
260

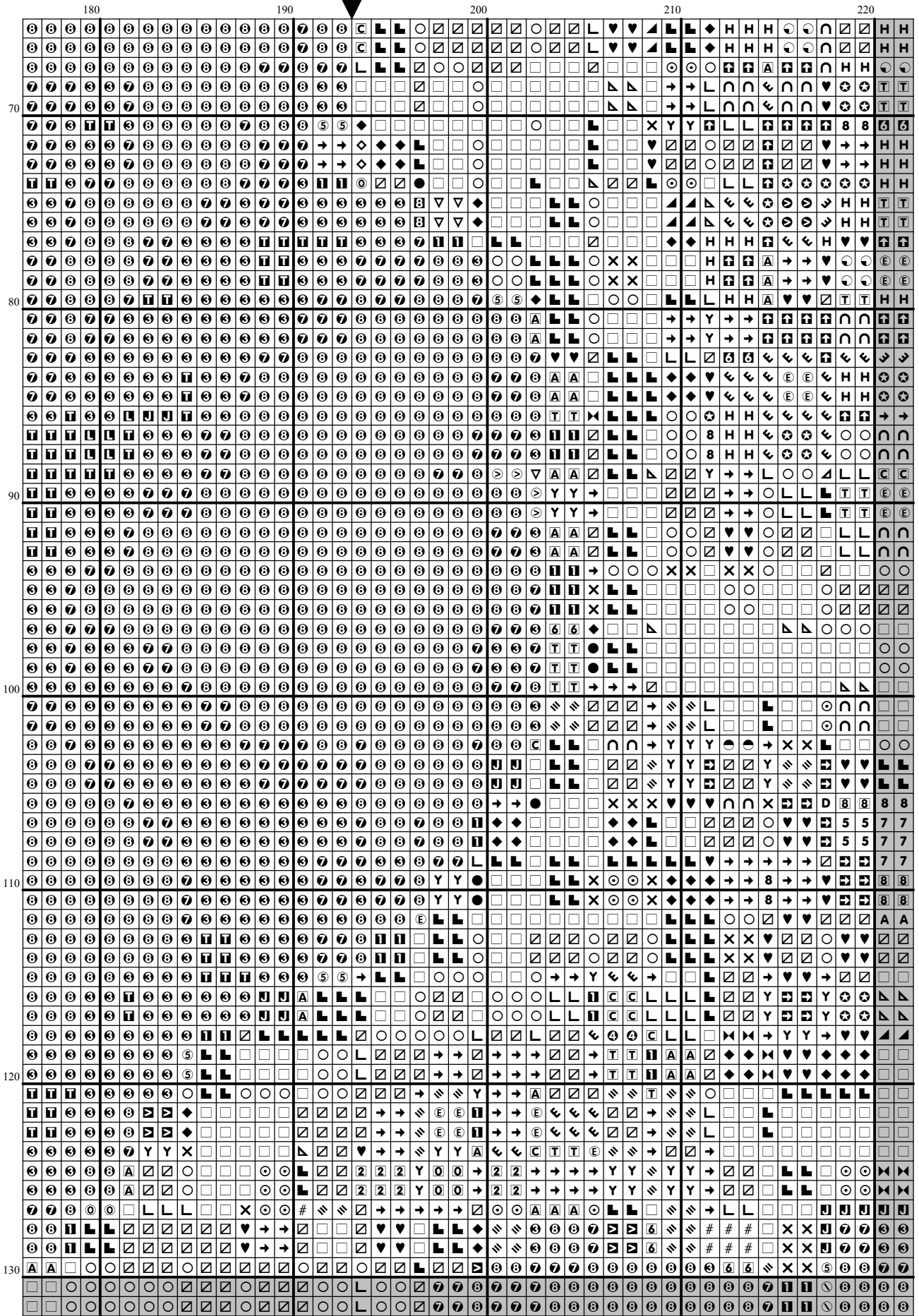


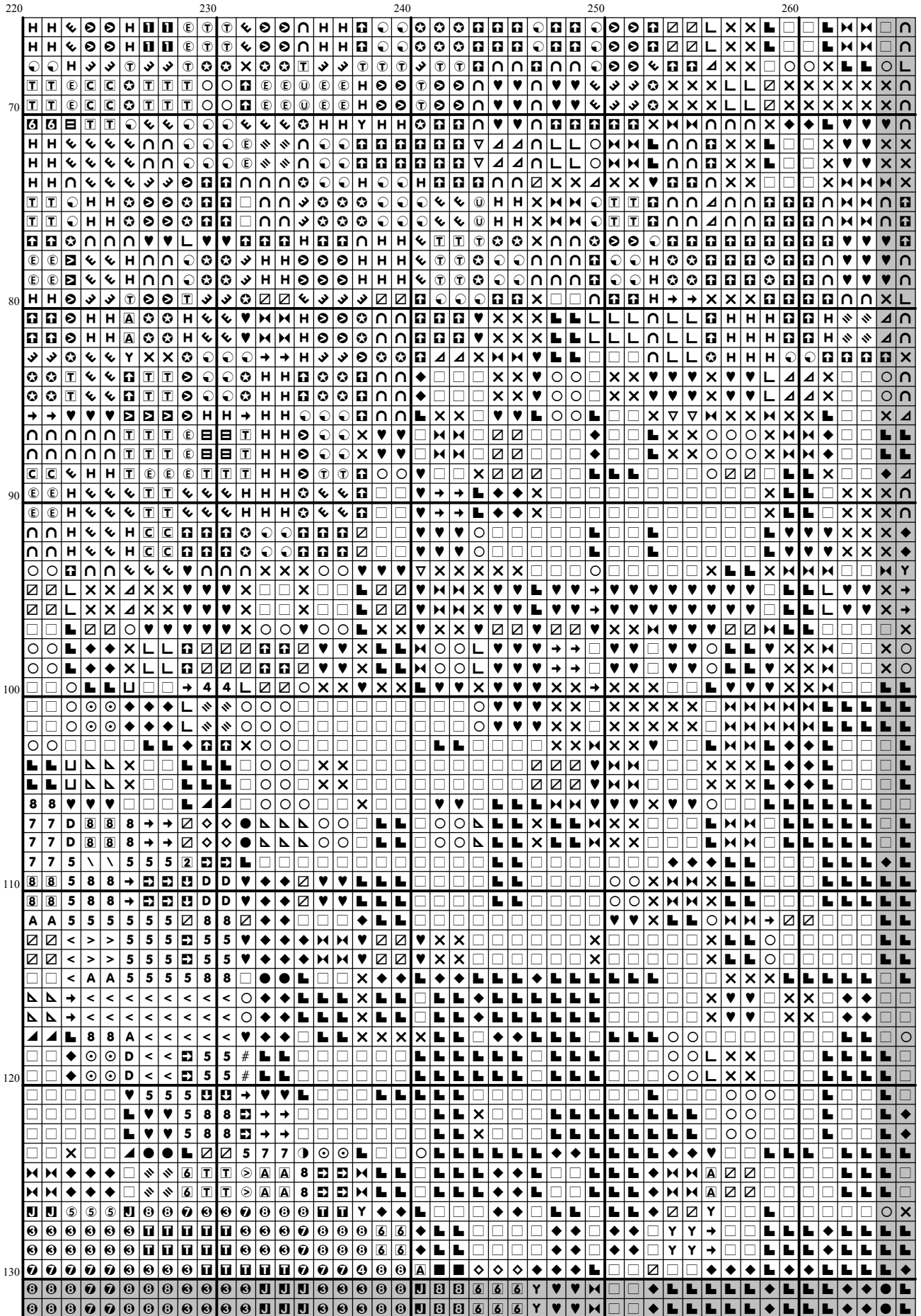


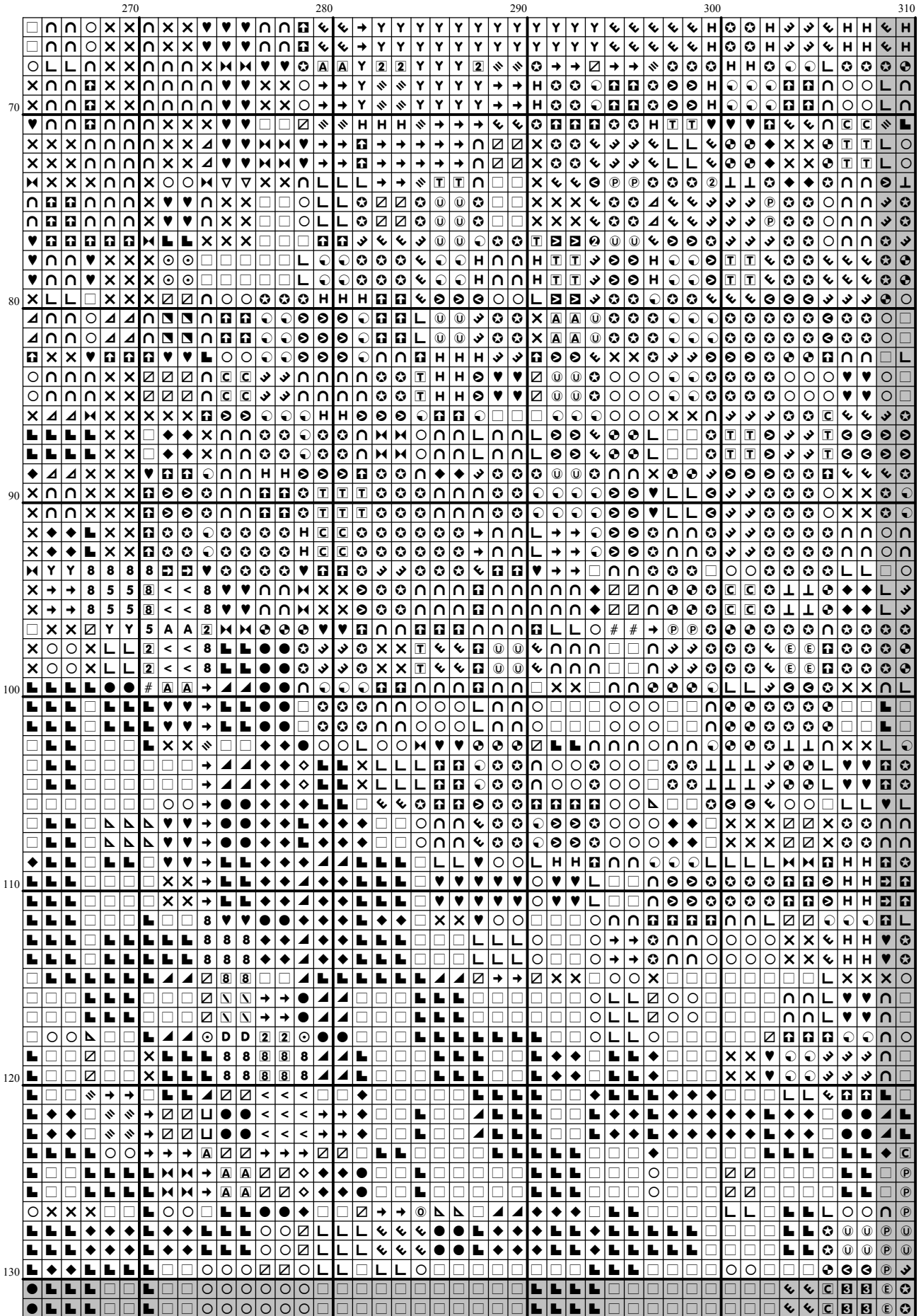


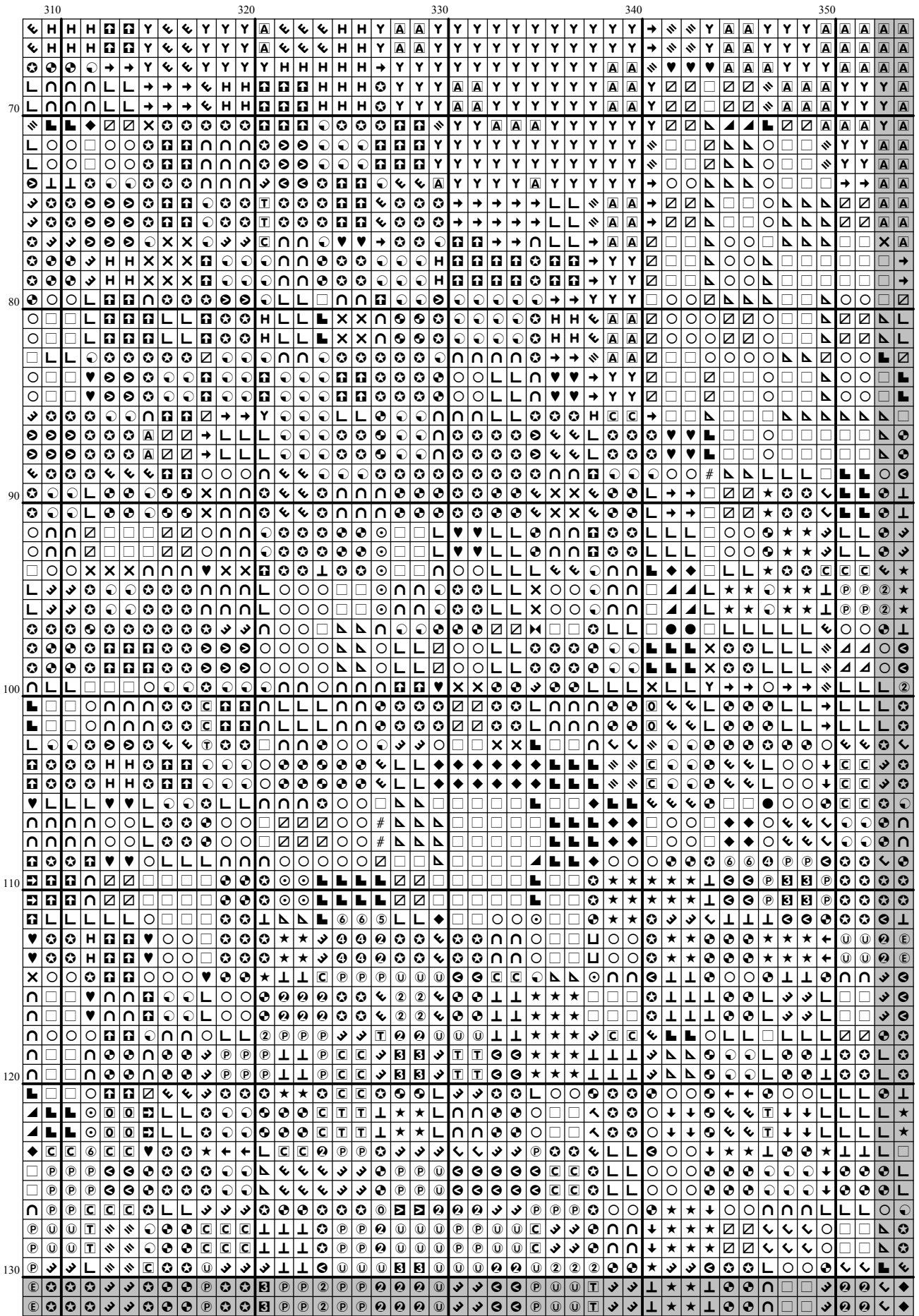


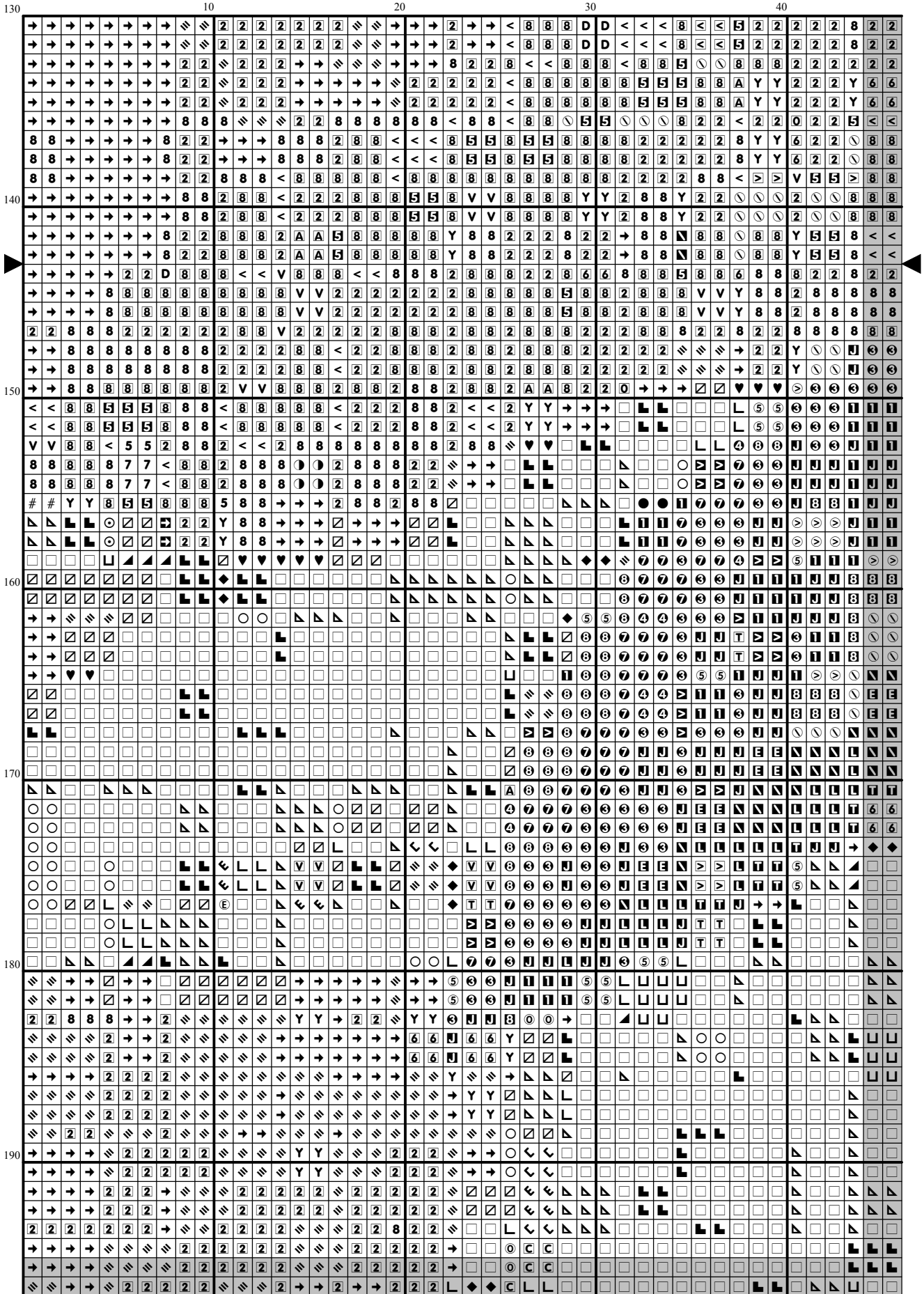


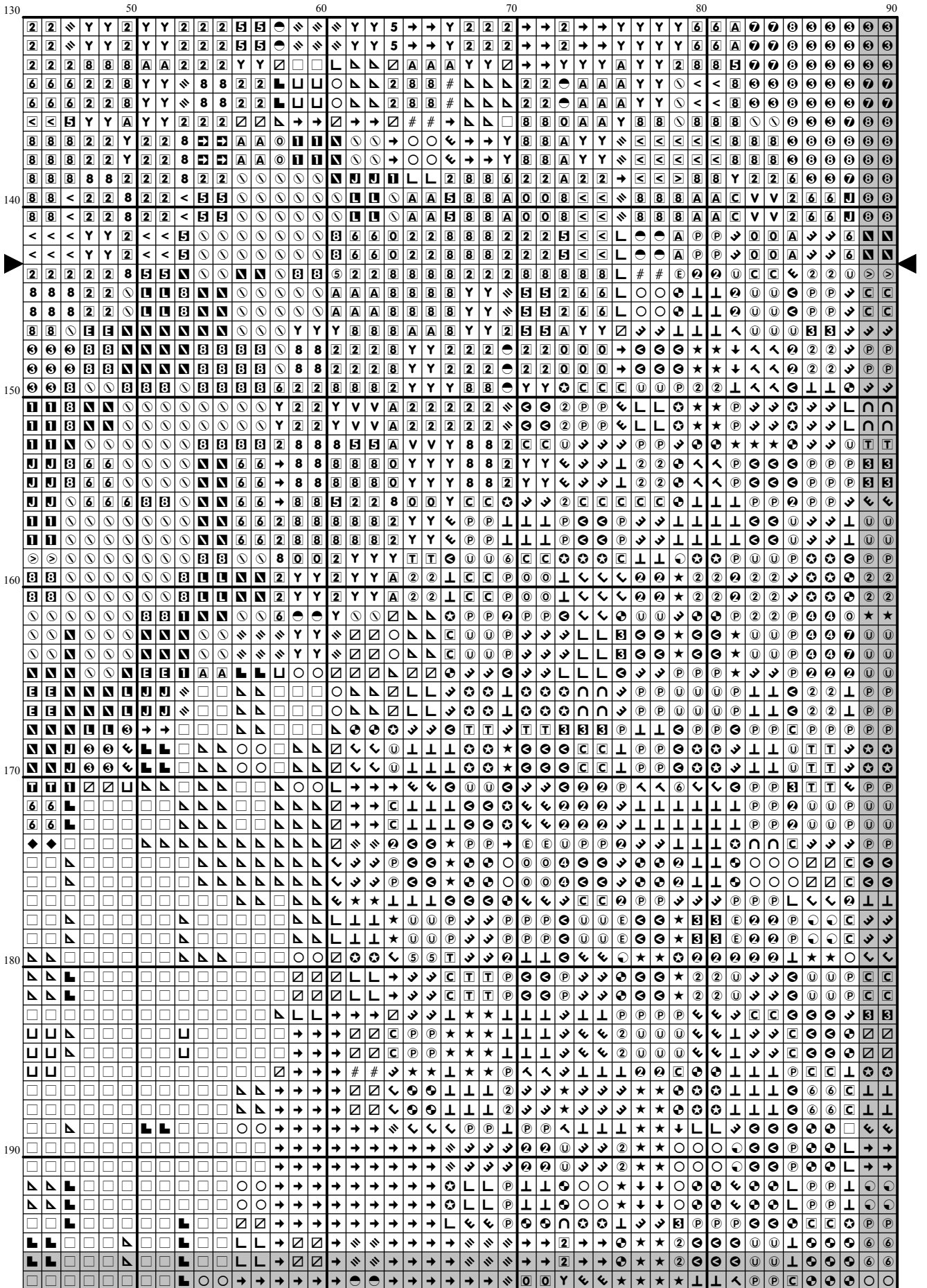


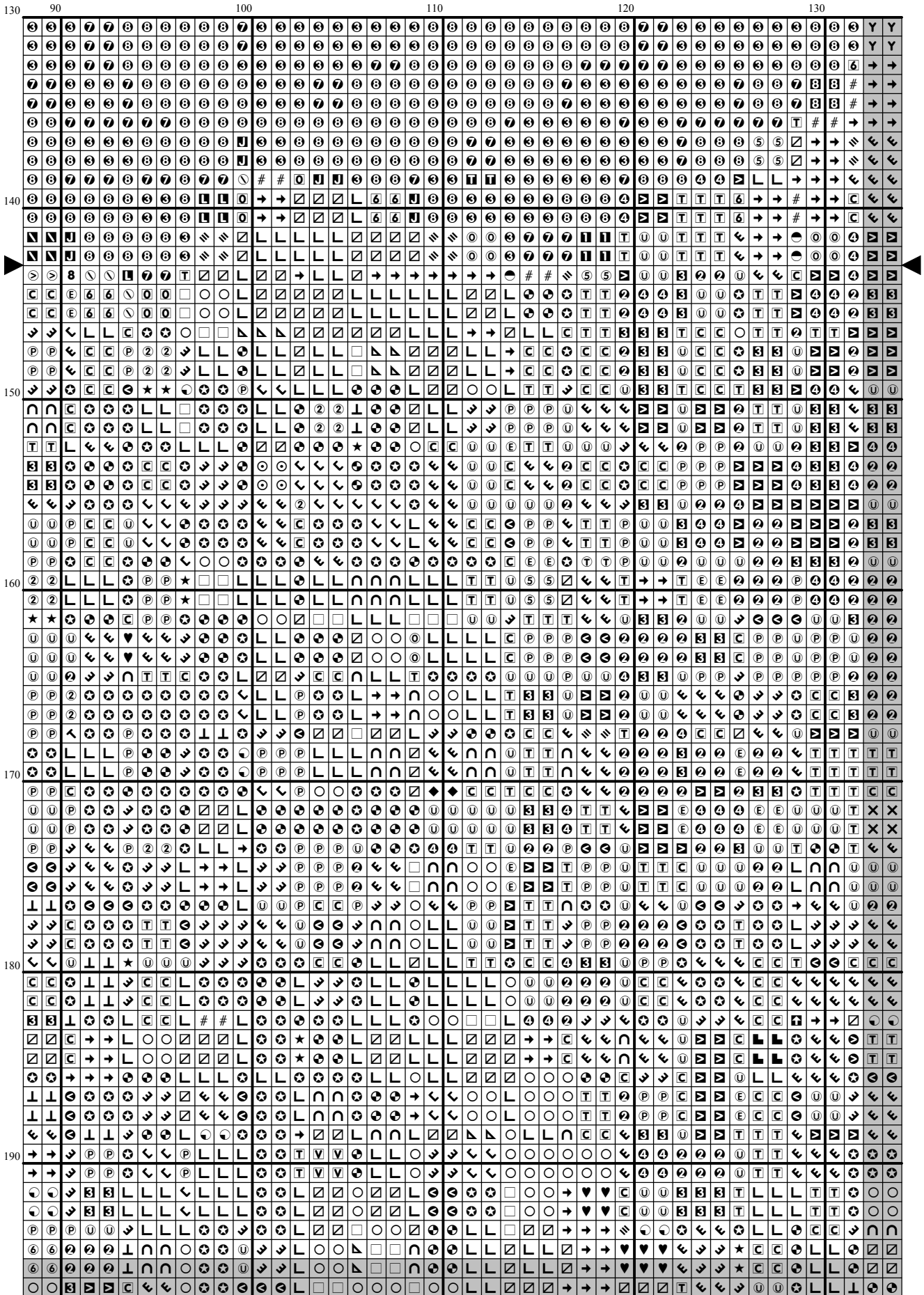


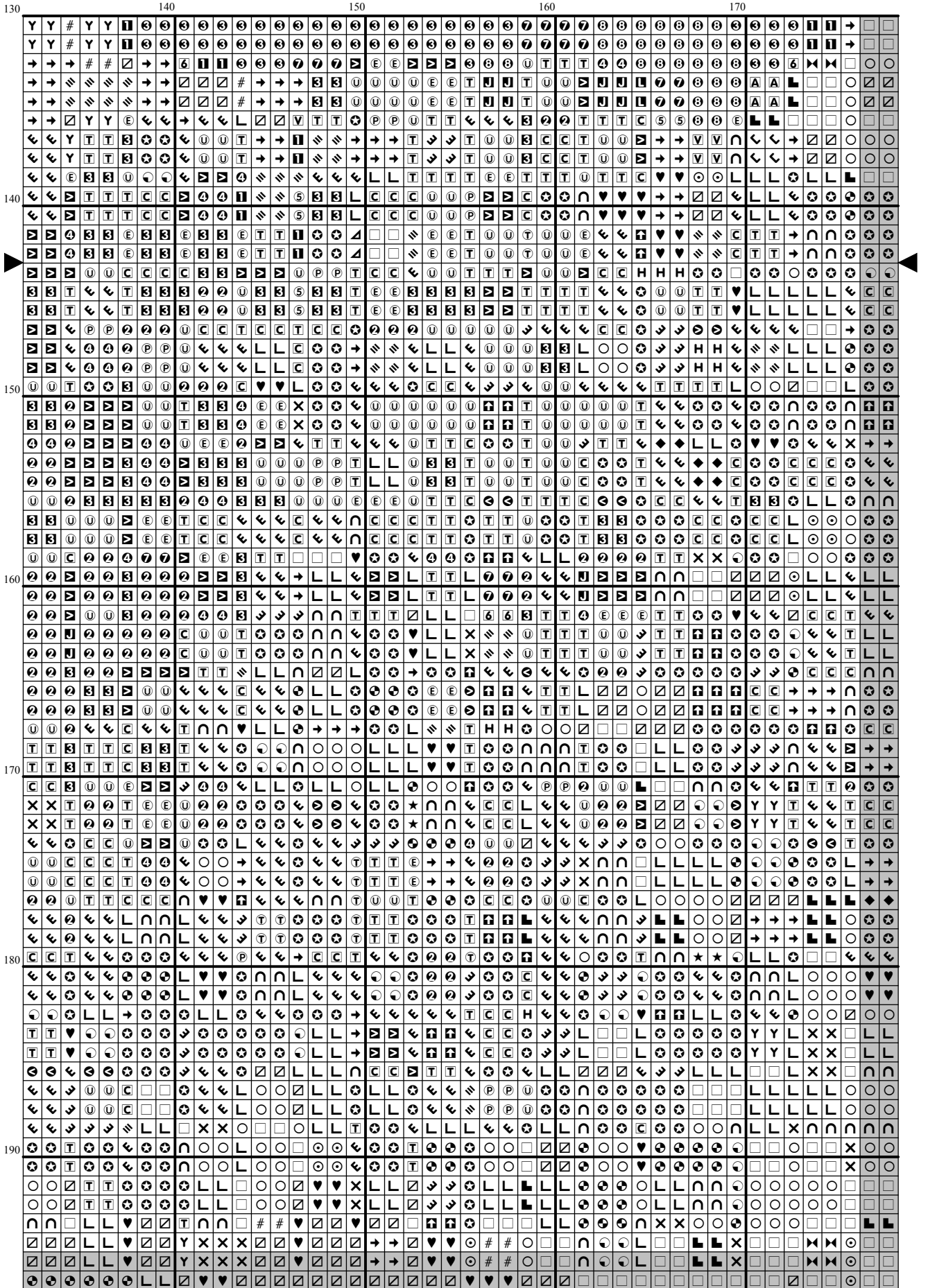


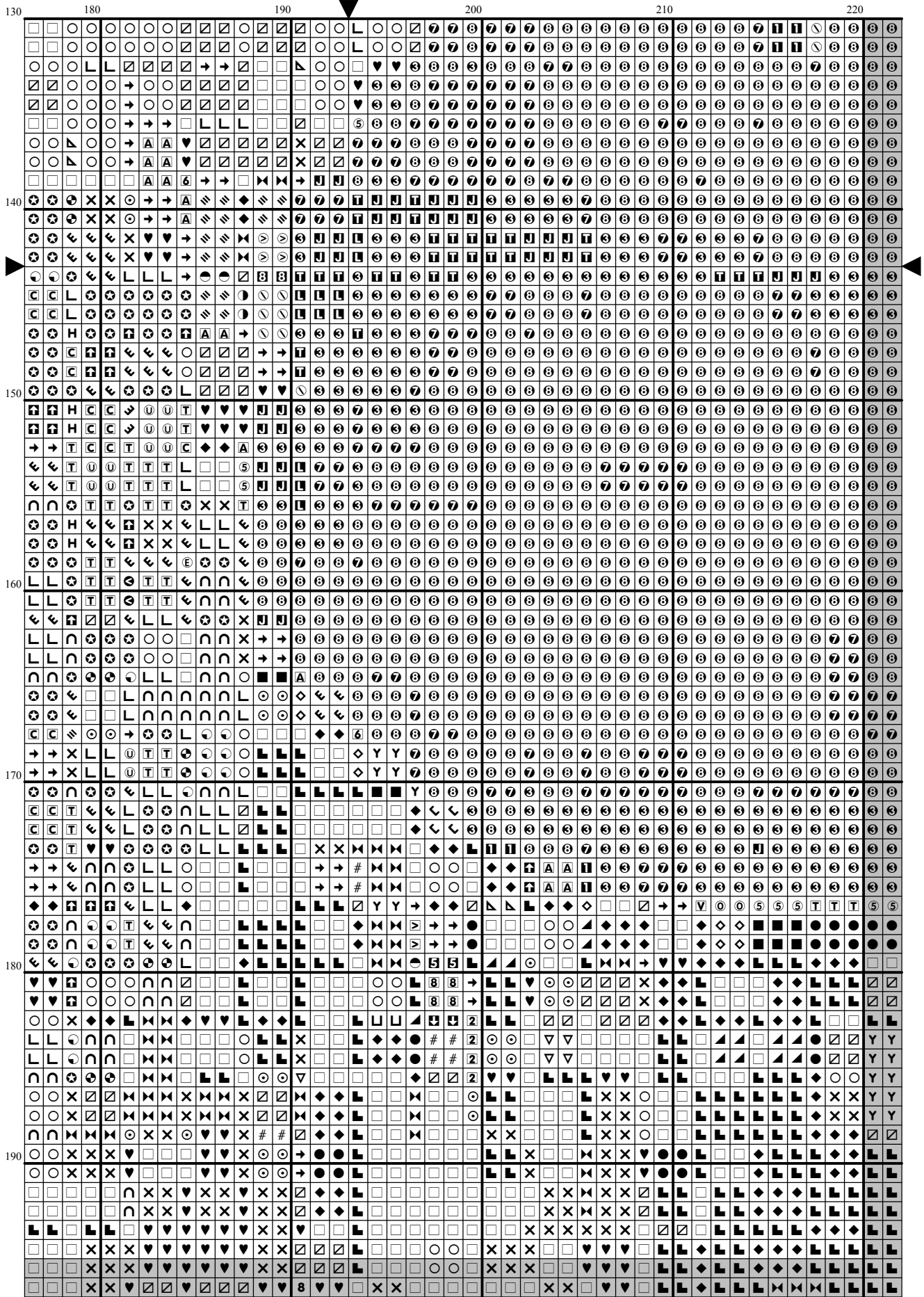


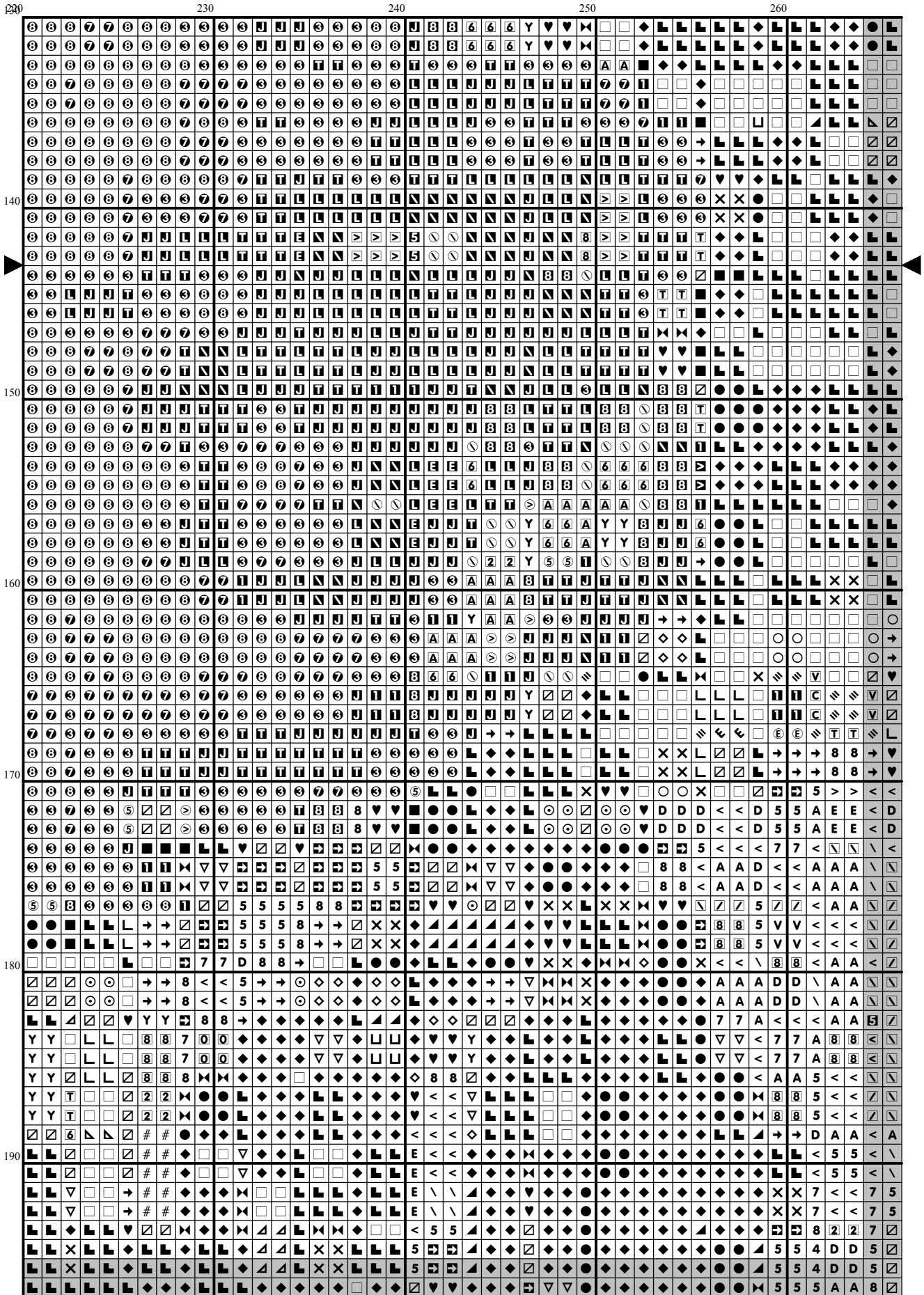


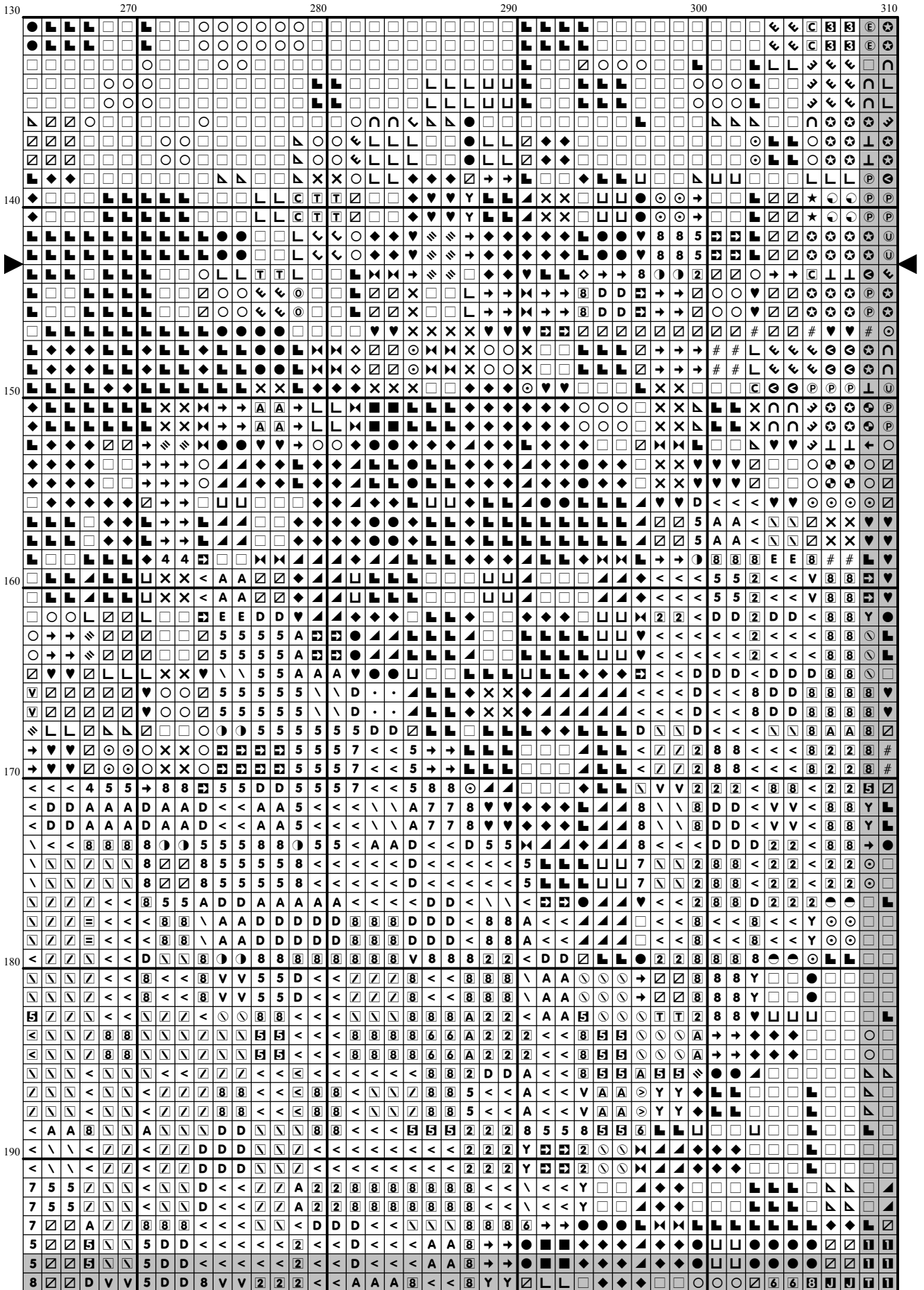


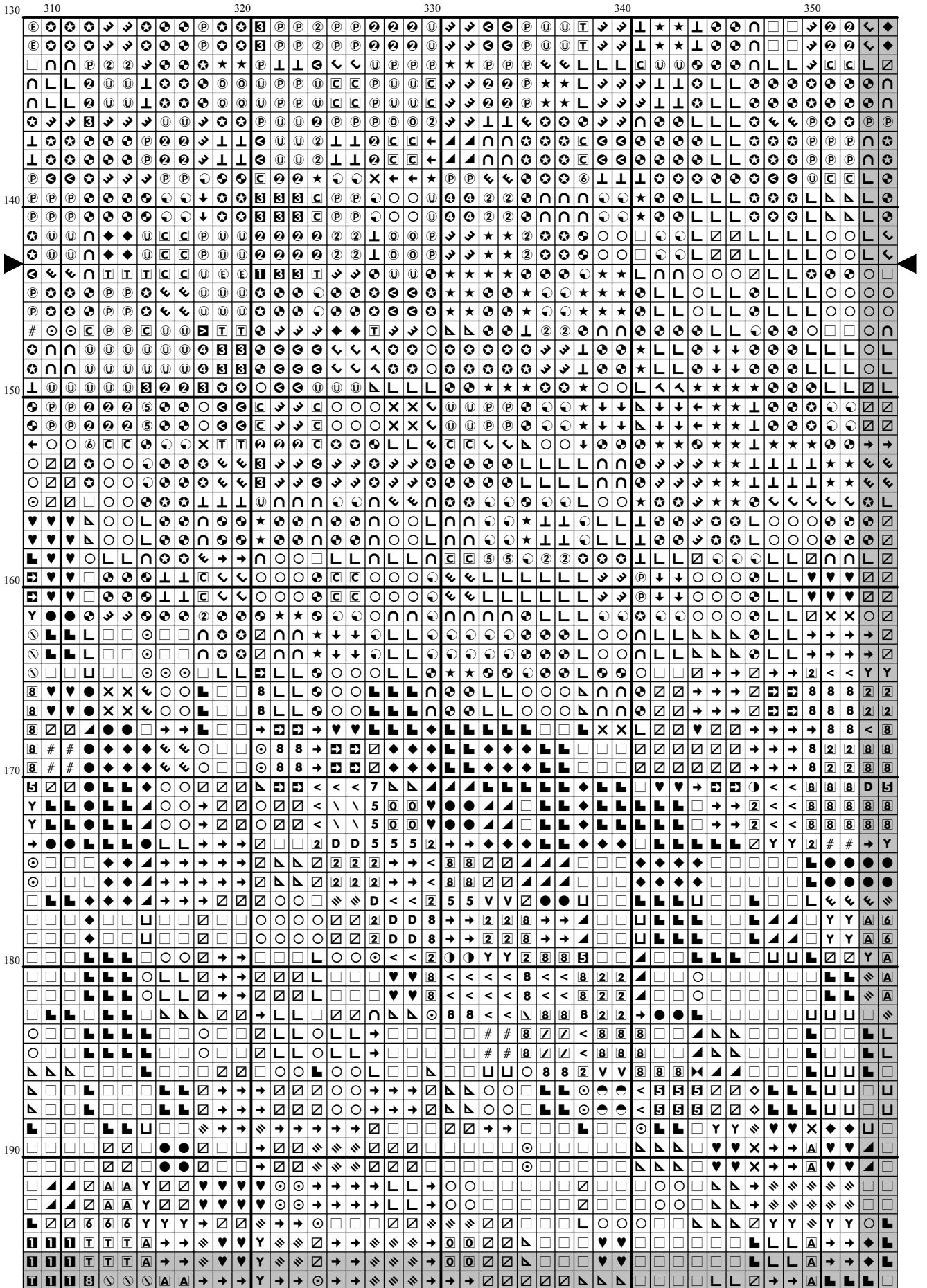


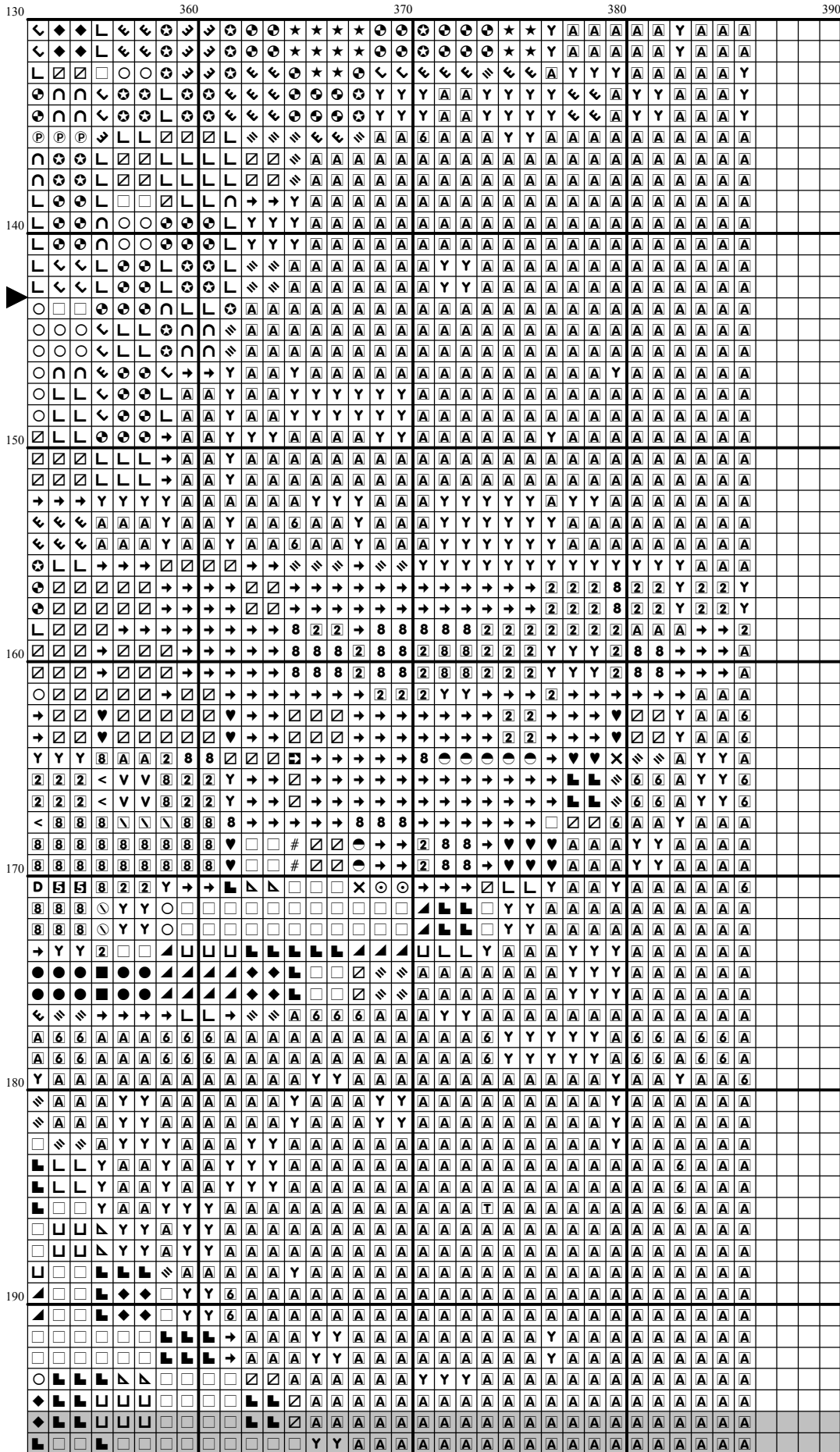


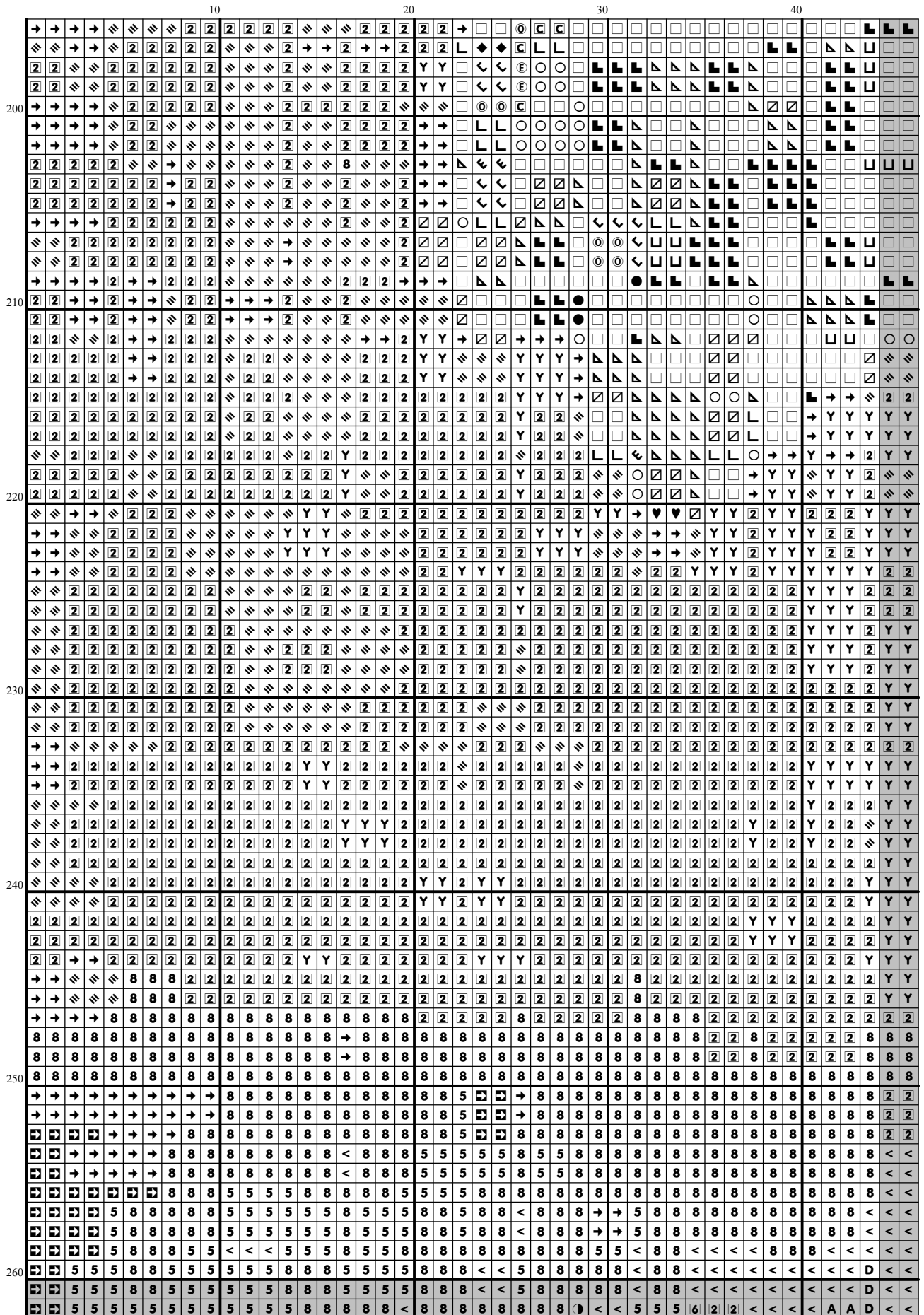


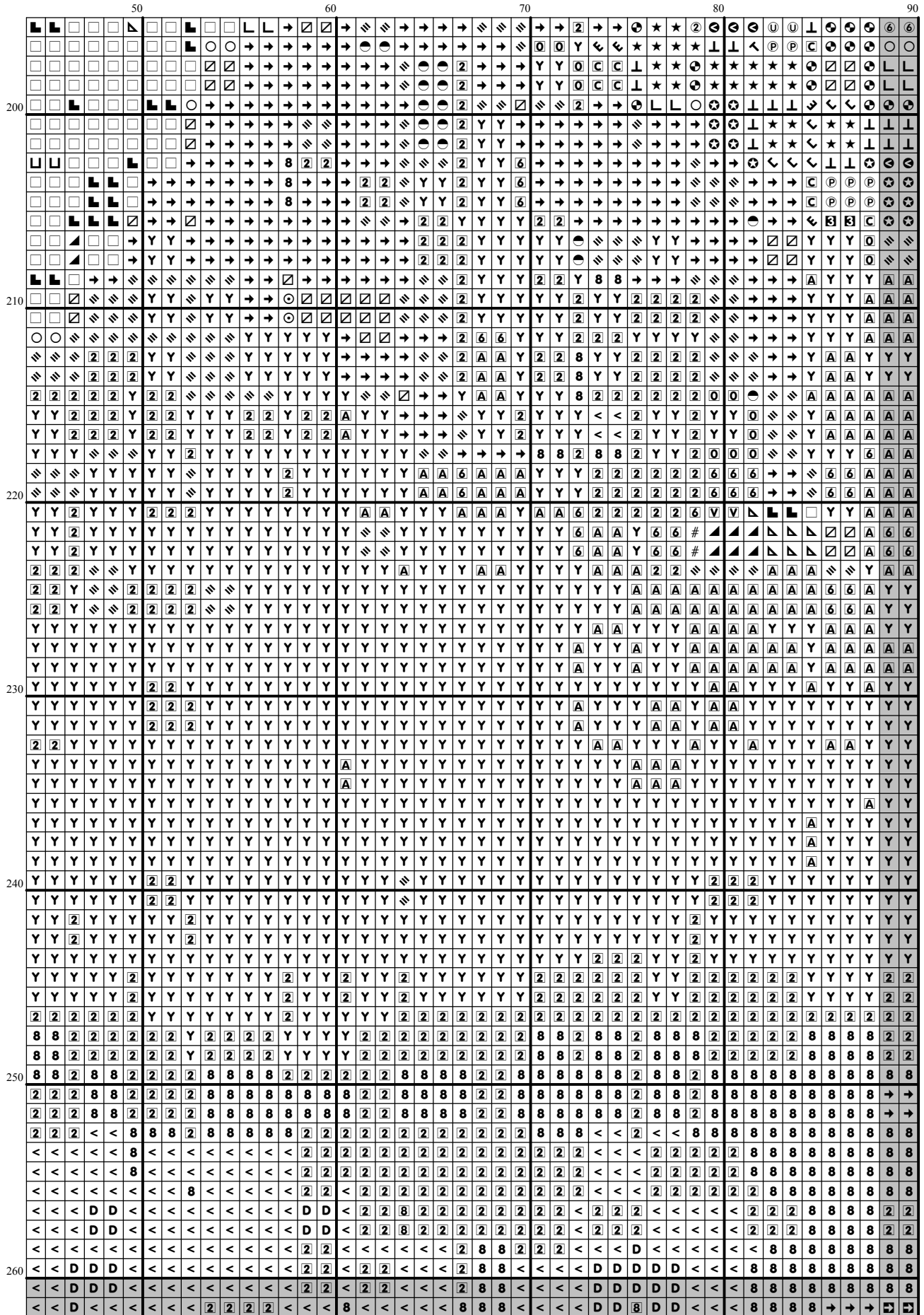


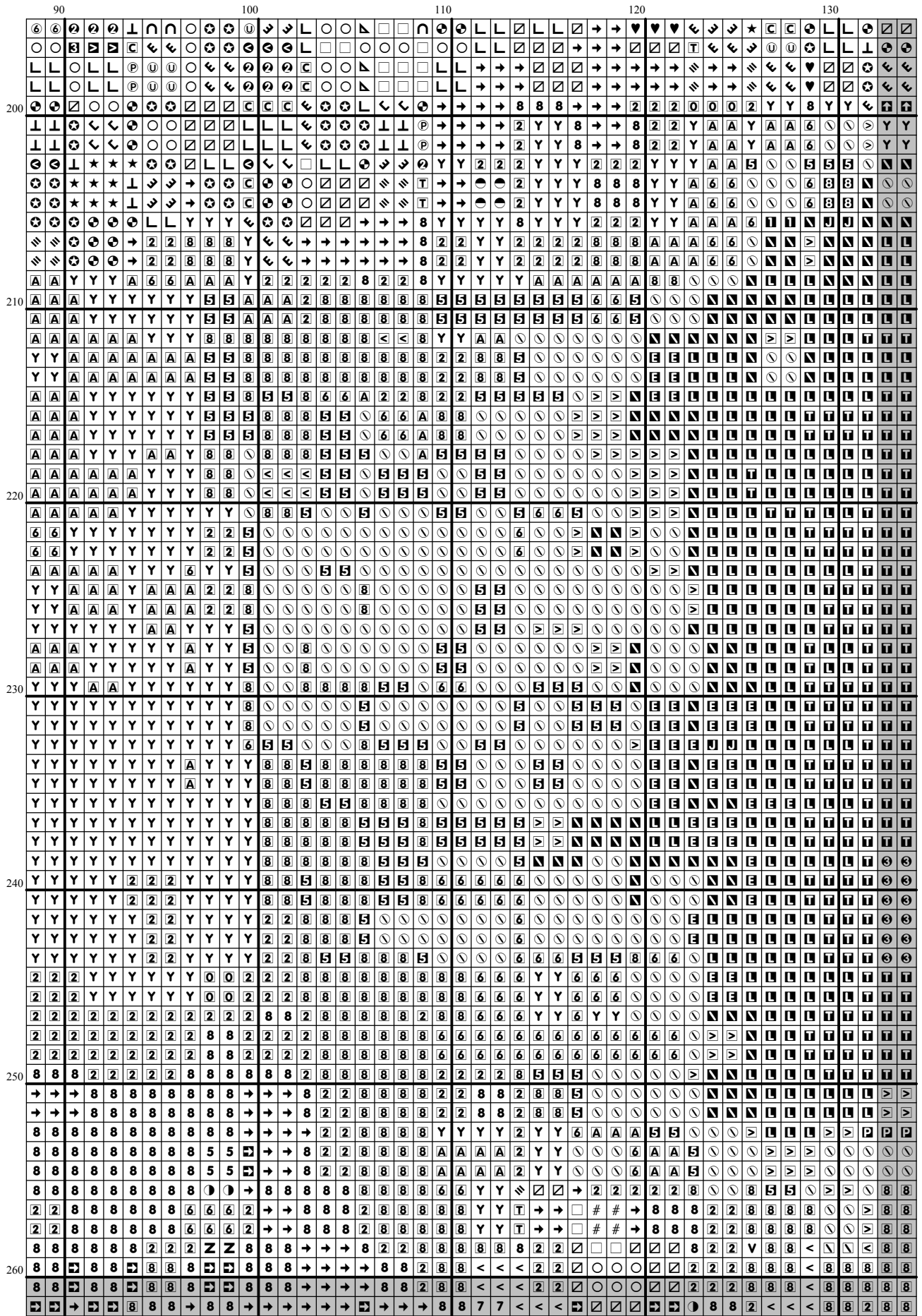


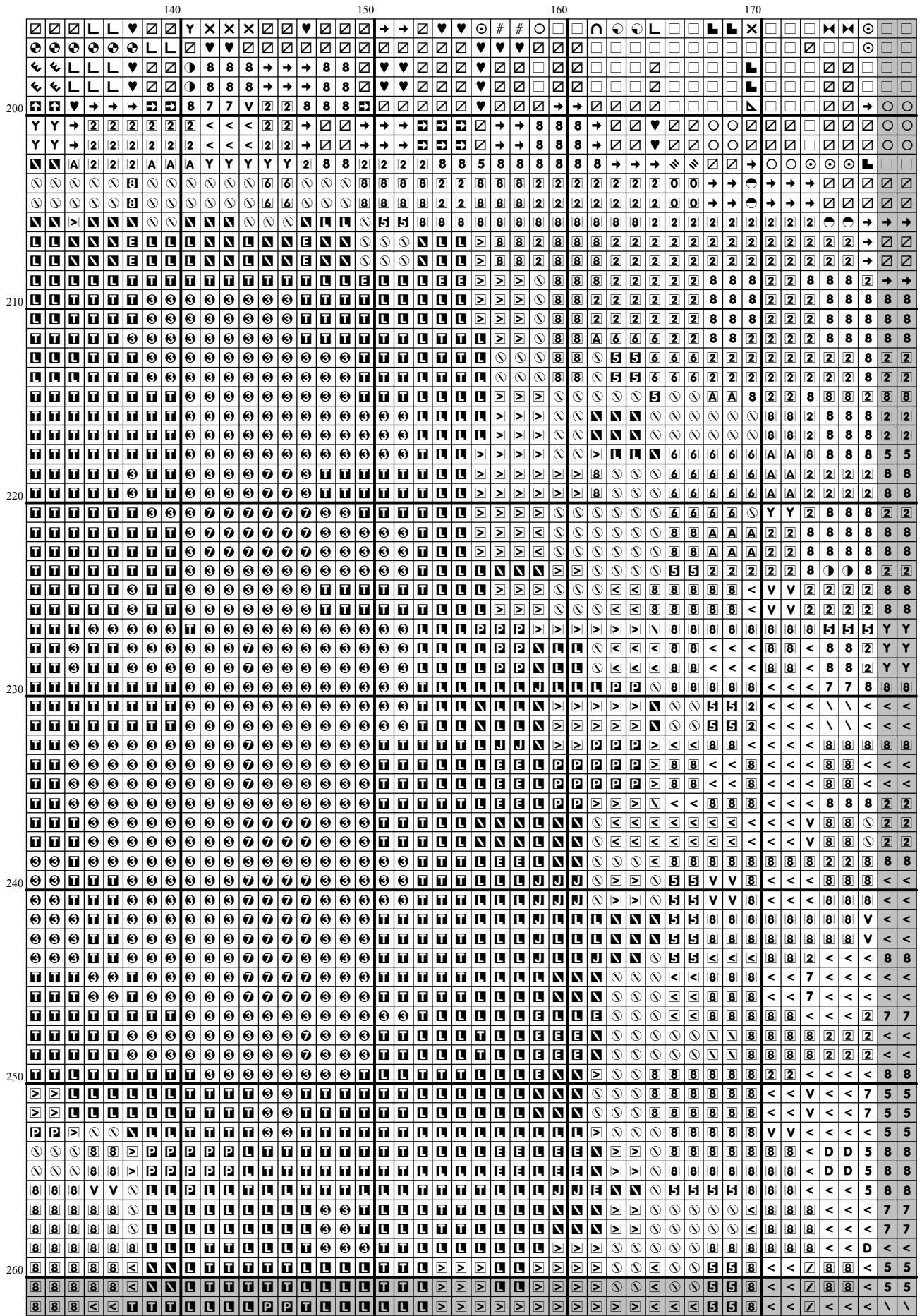


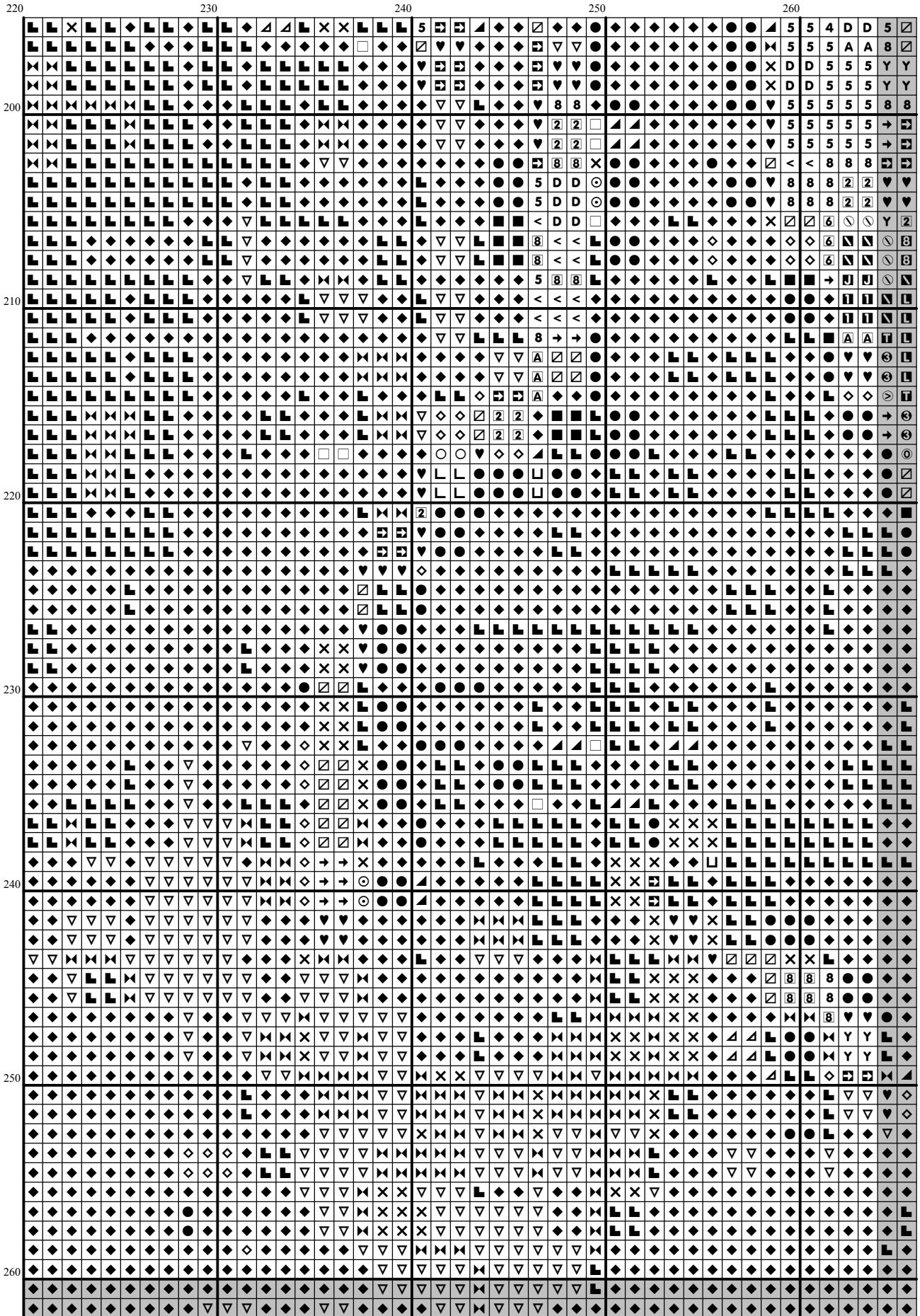


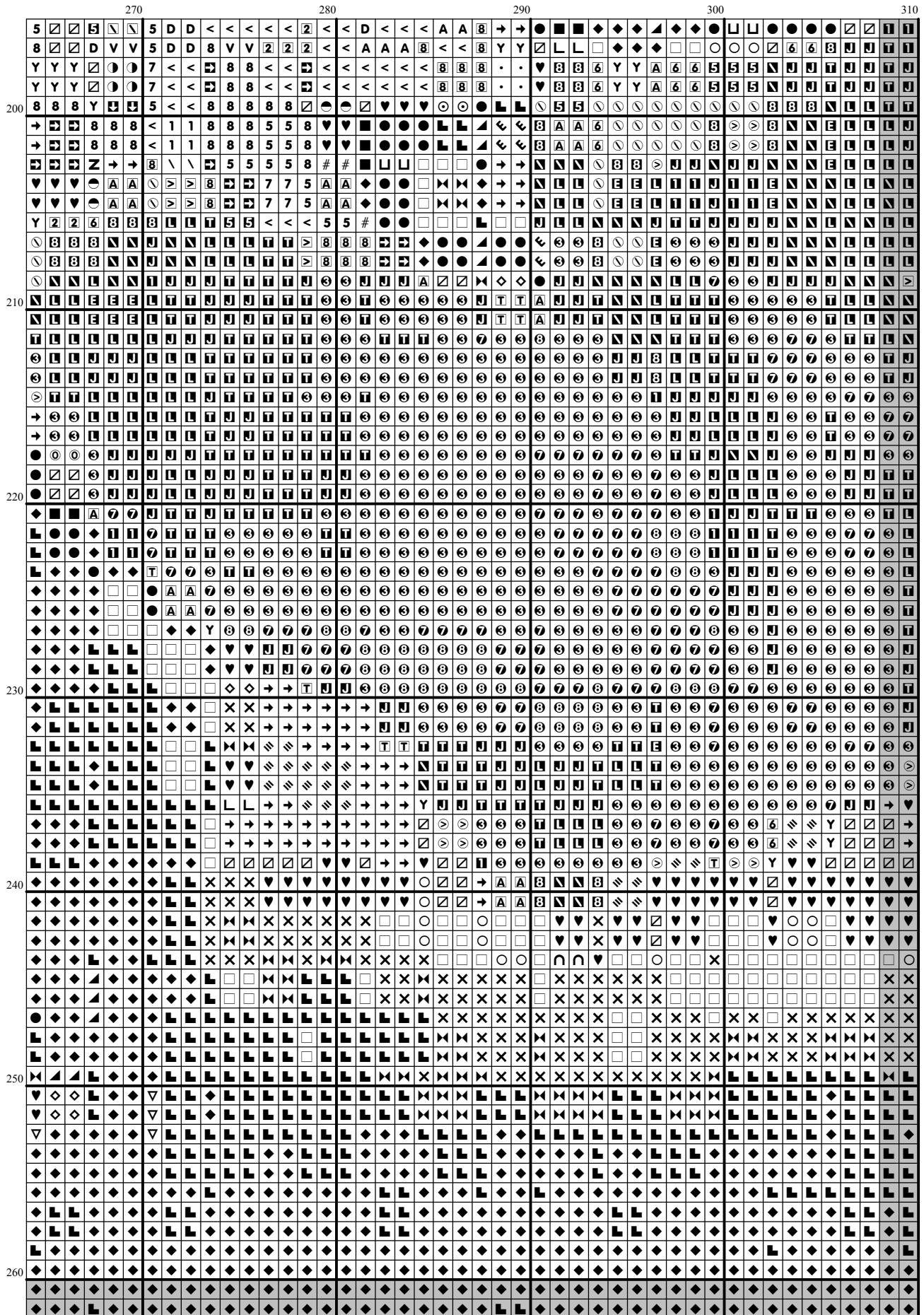


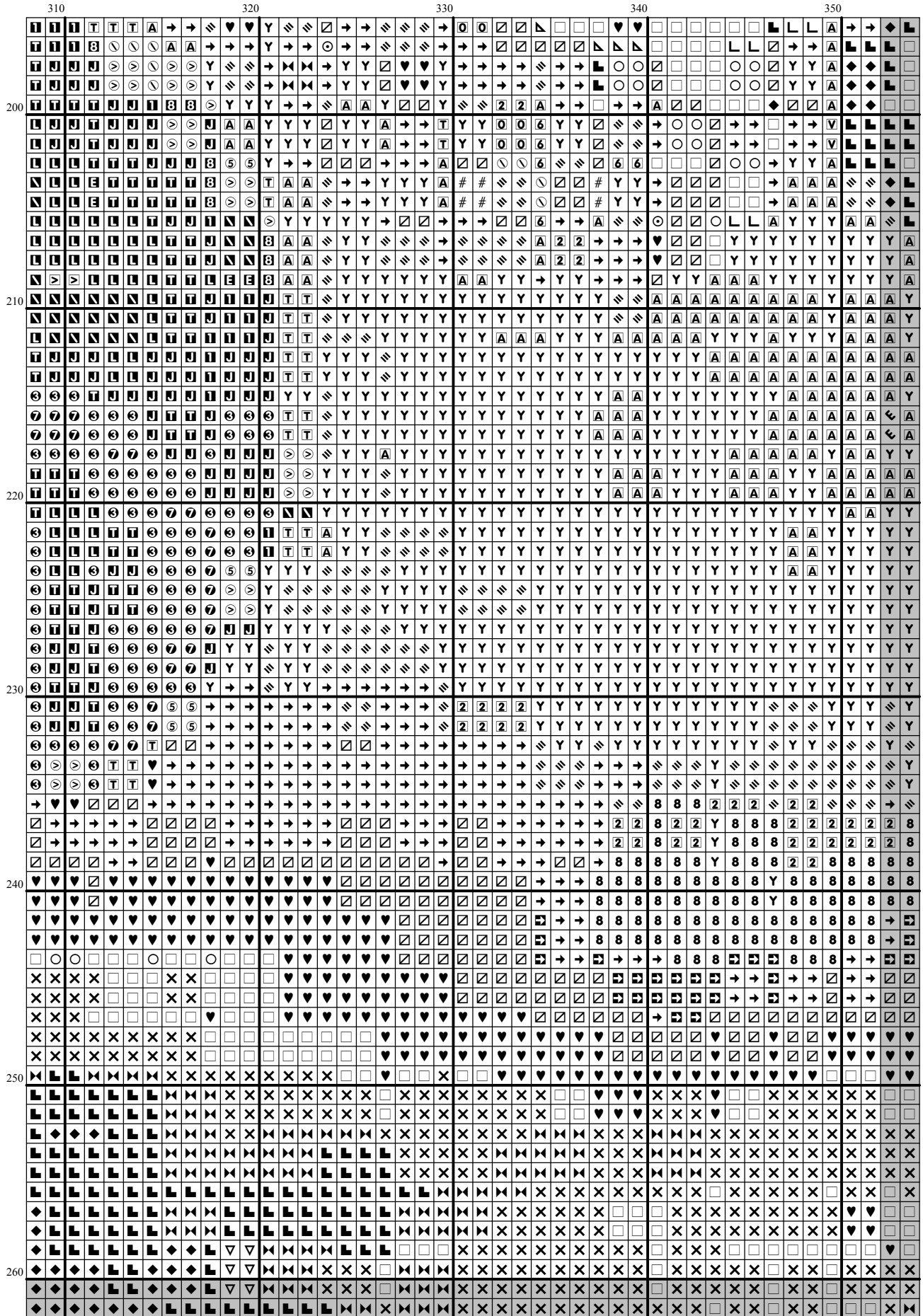


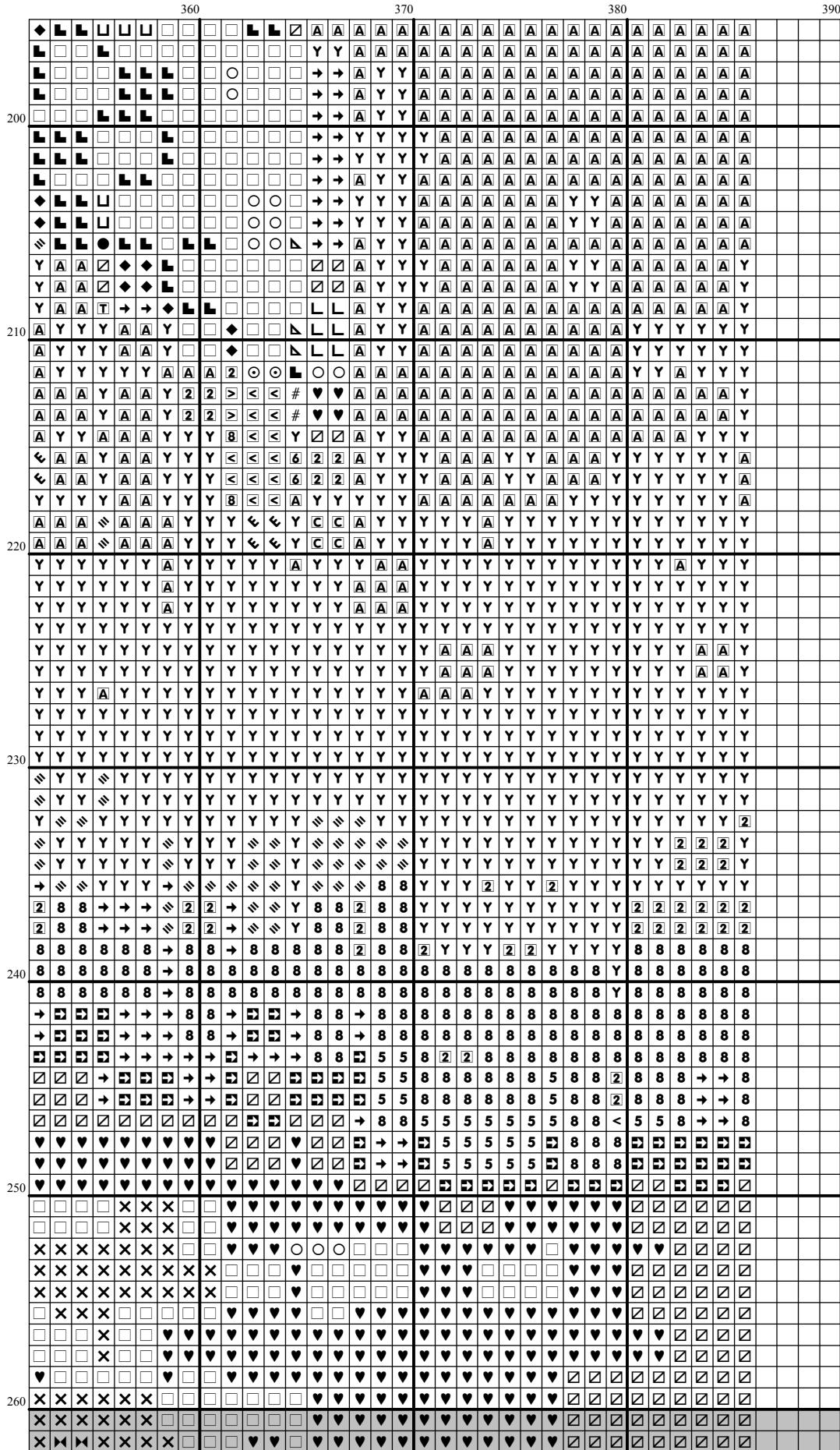


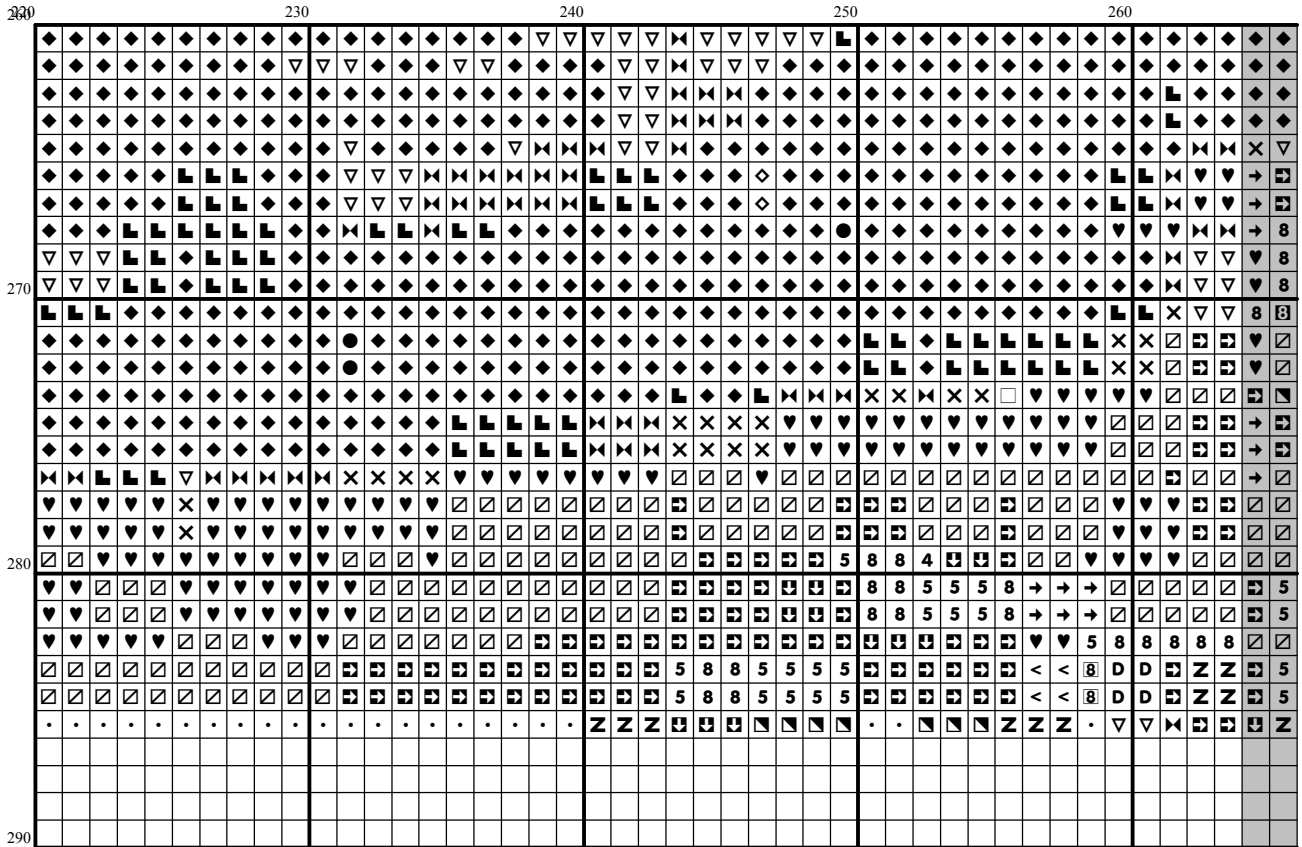


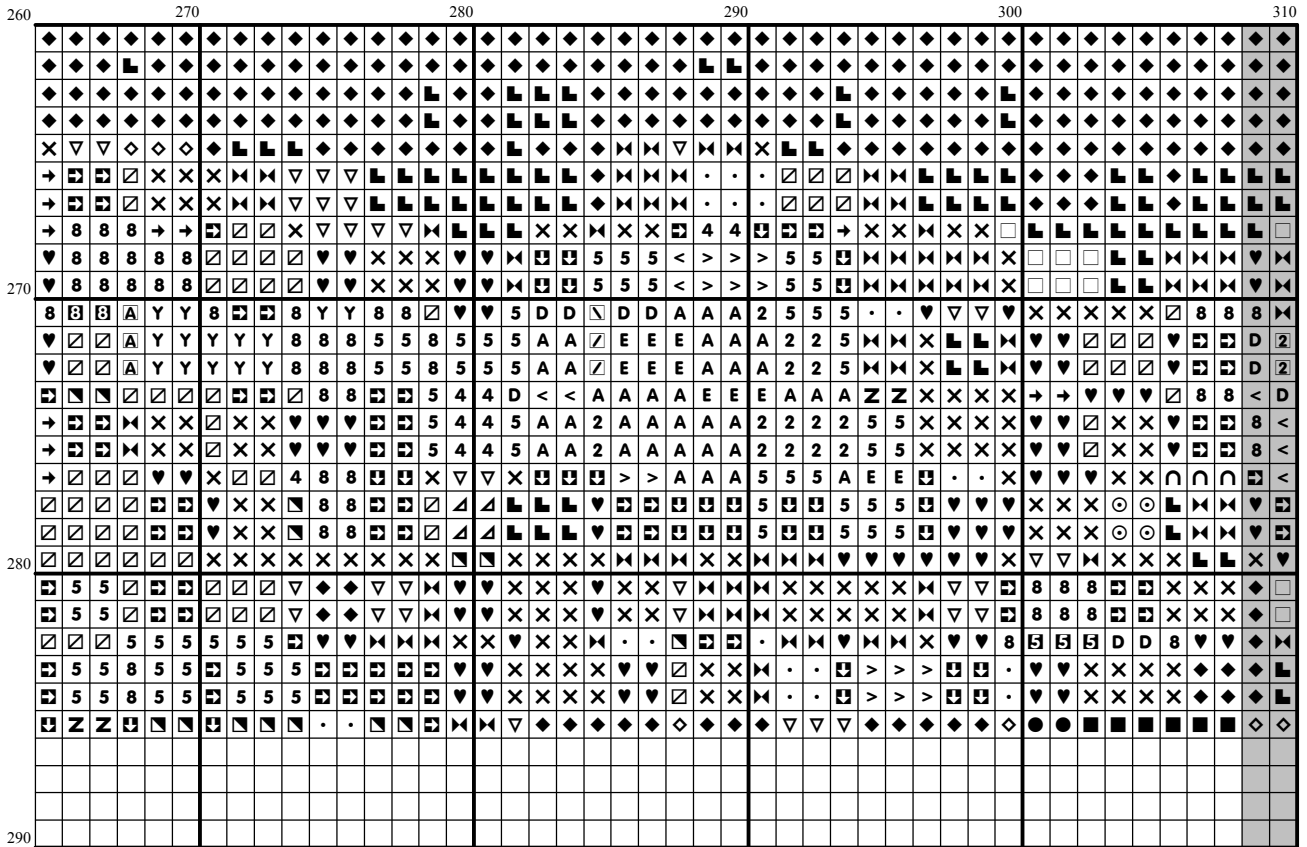












Instructions and Symbol Key for Design "FR 134 Magnolias and Hydrangeas"







Fabric: 14 count white Aida

Stitches: 386 x 286 **Size:** 27.57 x 20.43 inches or 70.03 x 51.89 cm

Colours: DMC

Use 2 strands of thread for cross stitch

Sym	No.	Colour Name	Sym	No.	Colour Name
⊞	153	Lilac rose	Ⓟ	157	Light cornflower blue
⊕	160	Storm blue	Ⓞ	161	Ash blue
1	167	Dark mustard brown	ⓔ	168	Mouse grey
Ⓣ	210	Light violet	■	310	Black
∩	317	Steel grey	↙	318	Granite grey
↓	322	Delft blue	⊕	340	Wisteria violet
⊗	341	Hydrangea blue	⊞	369	Bamboo leaf green
⊗	370	Medium mustard	7	371	Green plains
v	372	Light mustard	F	402	Pottery brown
▲	413	Iron grey	⊞	414	Lead grey
T	415	Chrome grey	o	420	Hazelnut
∇	422	Light oak	2	435	Tabacco brown
∇	437	Camel	Ⓢ	453	Turtledove grey
▲	500	Ivy green	□	501	Pond green
L	502	Blue green	V	503	Thyme green
L	520	Dark fern green	●	522	Trellis green
Ⓜ	524	Light grey green	X	535	Stone grey
L	561	Cypress tree green	Z	611	Sisal brown
<	612	String brown	Ⓢ	613	Rope brown
⊞	640	Greengrey	8	642	Earth grey
Ⓞ	644	Light green grey	♥	645	Dark steel grey
⊞	646	Platinum grey	Ⓢ	647	Rock grey
⊞	648	Pepper grey	Ⓢ	677	Sand gold
⊗	712	Cream	⊞	762	Pearl grey
⊗	775	Summer rain blue	⊕	793	Medium cornflower blue
∇	794	Baby blue	L	809	Gentle blue
L	822	Cotton cream	⊞	840	Hare brown
D	841	Deer brown	Ⓢ	842	Beige rope
∇	844	Pepper black	●	890	Deep forest green
↙	926	Greygreen	Ⓢ	927	Oyster grey
Ⓢ	928	Light pearl grey	⊕	931	Blue grey
↖	932	Seagull blue	◇	934	Algae green
⊞	945	Eggshell cream	●	3012	Marsh green
→	3022	Elephant grey	Y	3023	Light platinum grey
⊕	3024	Pale steel grey	2	3032	Dark antique silver
⊞	3033	Antique silver	H	3042	Lilac
\	3045	Coffee cream	Ⓢ	3046	Rye beige
⊞	3047	Silver birch beige	Ⓢ	3053	Tweed green
Ⓢ	3072	Pale pearl grey	Ⓞ	3362	Fig tree green
#	3363	Herb green	Ⓜ	3743	Pale lilac
Ⓞ	3747	Pale candy blue	Ⓢ	3752	Light porcelain blue
⊞	3753	Moonlight blue	Ⓢ	3756	Cloud blue
○	3768	Storm grey	>	3772	Rosy tan
E	3778	Light terracotta	⊞	3787	Wolf grey
.	3790	Cappuccino brown	◆	3799	Anthracite grey
←	3807	Cornflower blue	Ⓞ	3813	Light green
∇	3815	Eucalyptus Green	A	3828	Oaktree brown
★	3839	Mediterranean blue	Ⓢ	3840	Light lavender blue

	3856	Pale beechwood		3860	Taupe mauve
4	3861	Light taupe	5	3863	Otter brown
	3865	Winter white		3866	Garlic cream
	ECRU	ECRU		BLANC	BLANC

This chart has been designed and printed with our best intentions of being without mistakes. However, the possibility of human error, printing mistakes or the variation of individual stitching does exist, and we regret that we cannot be responsible for this.

Note: The shaded blocks on the chart represent overlapping stitches.
 Copyright © Classic cross Stitch 2006 All rights reserved.