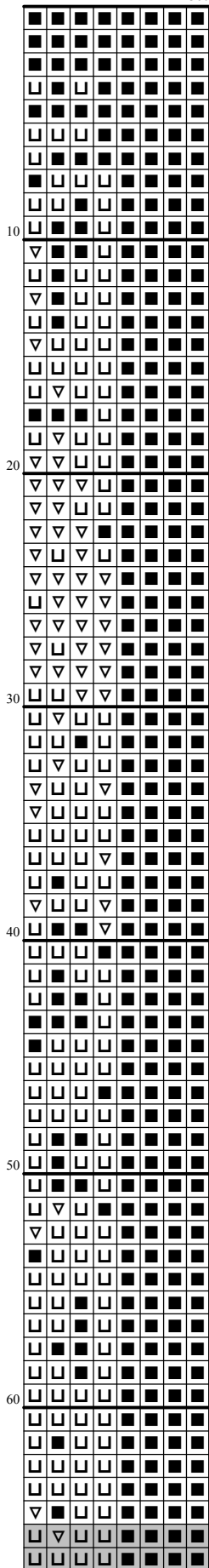
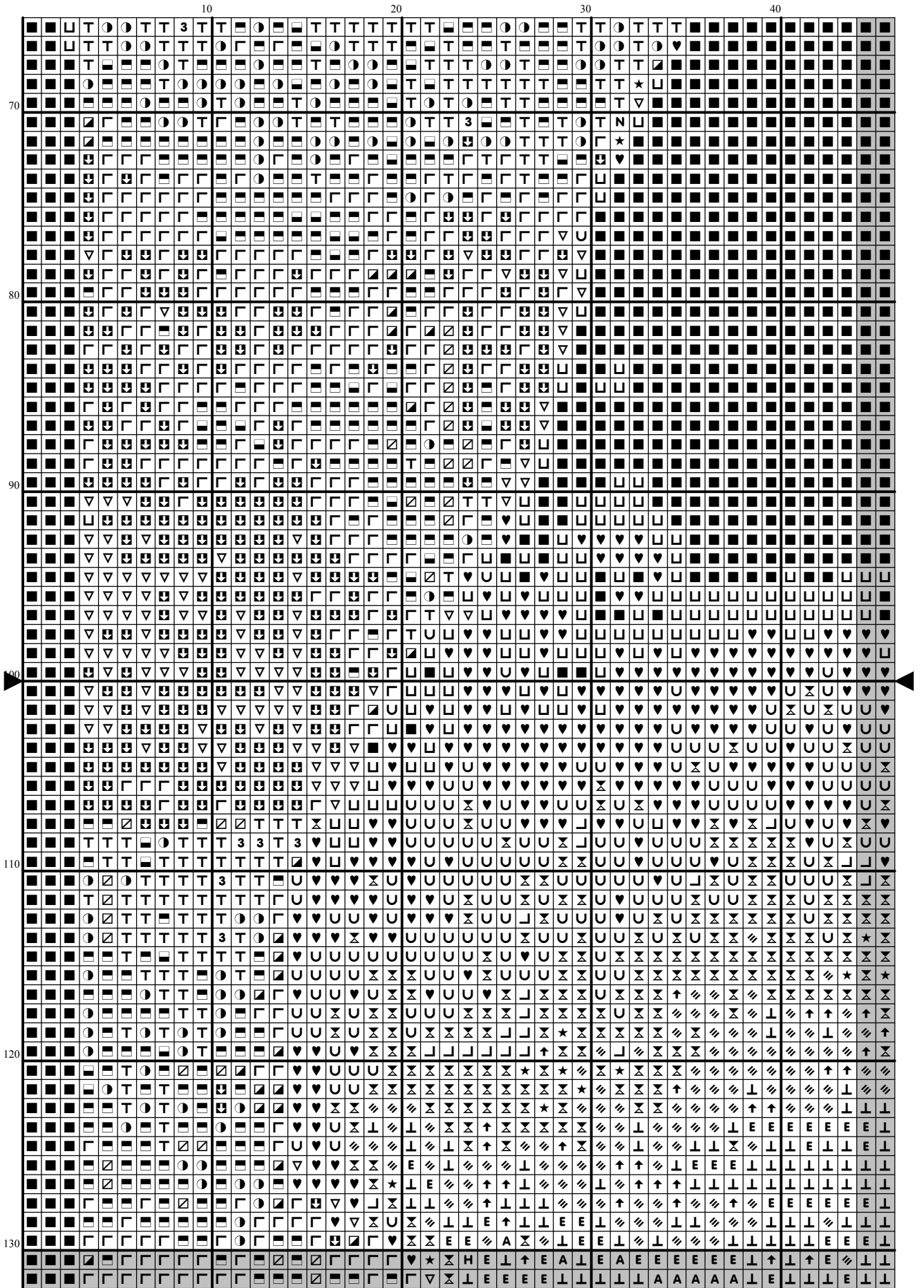
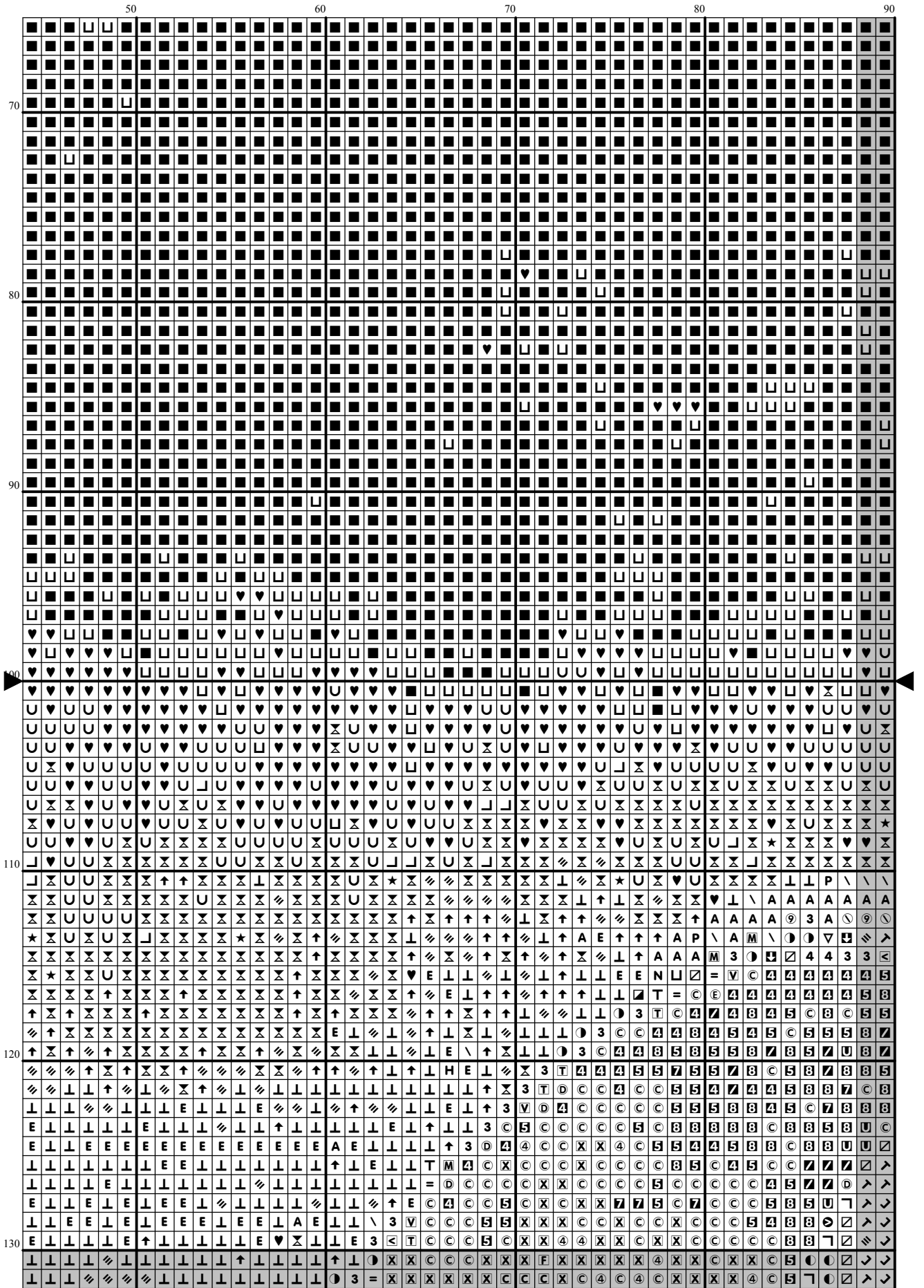
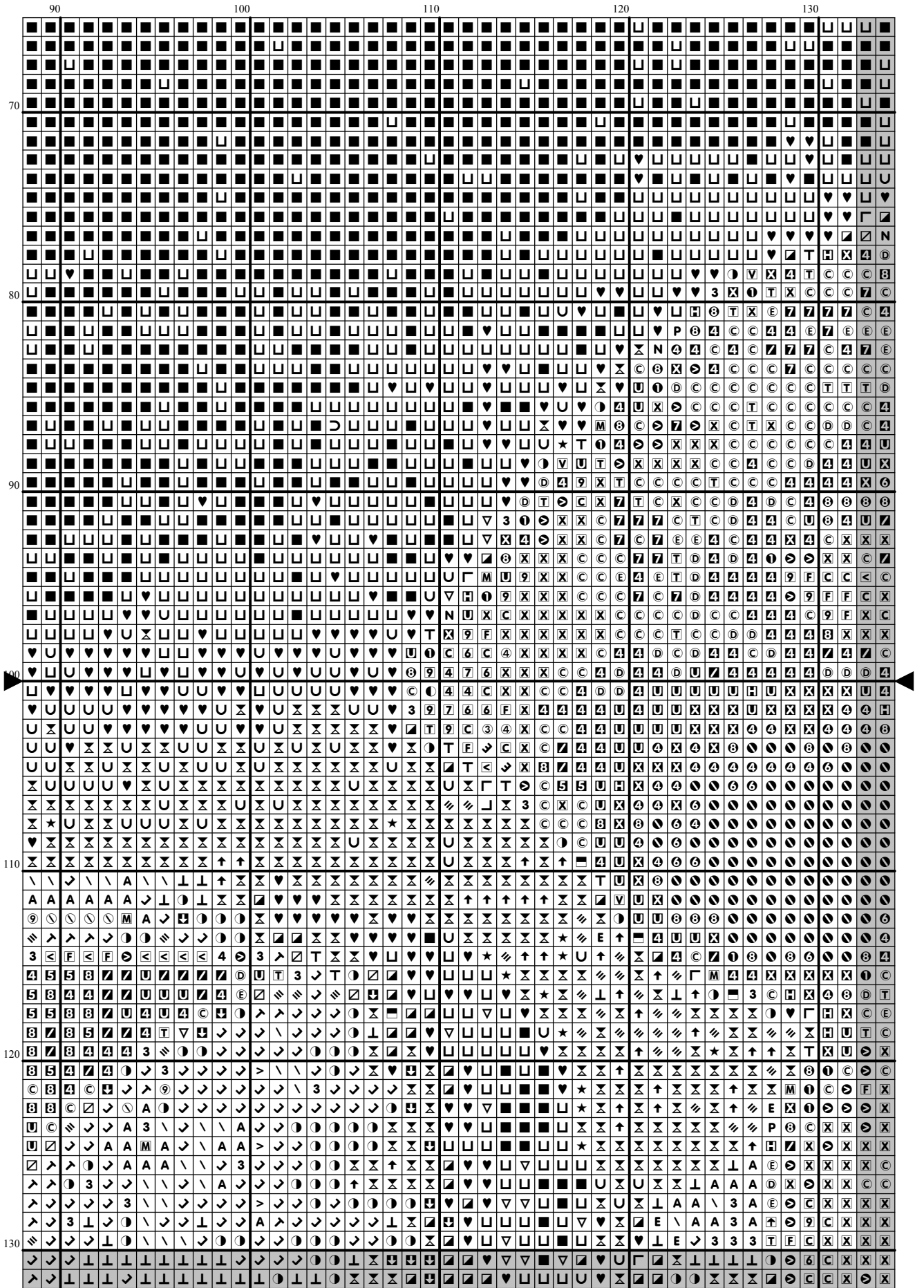


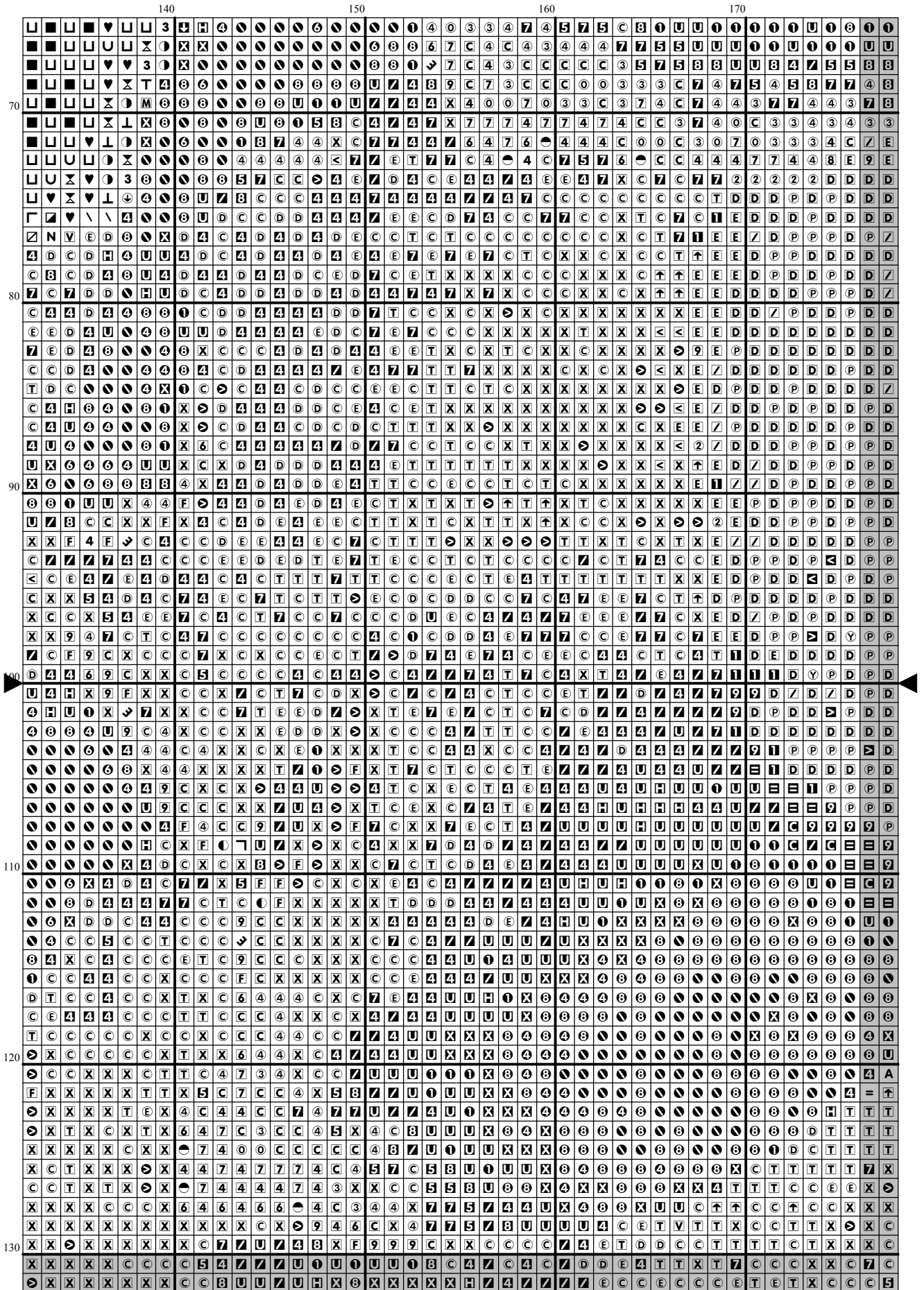
360

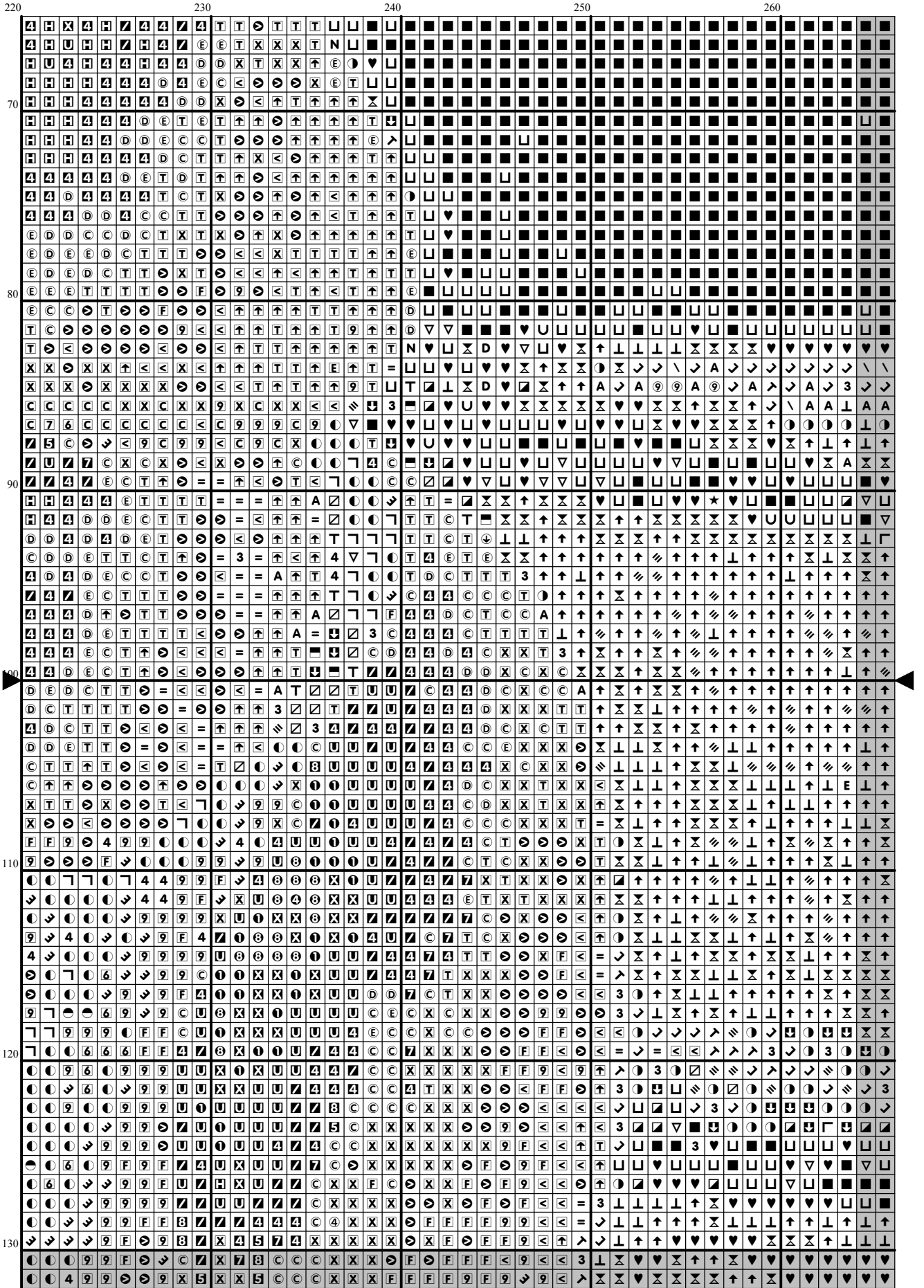


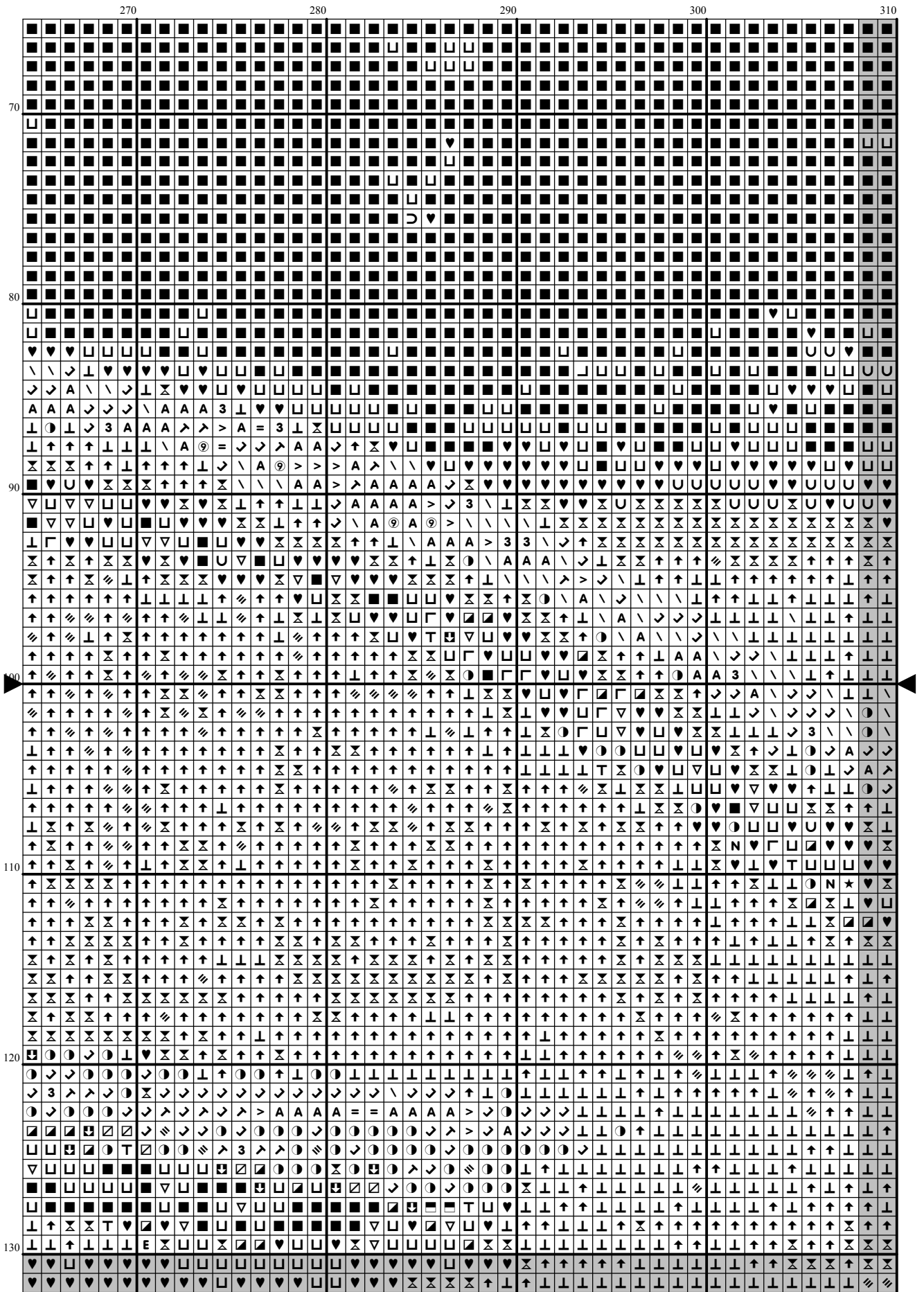


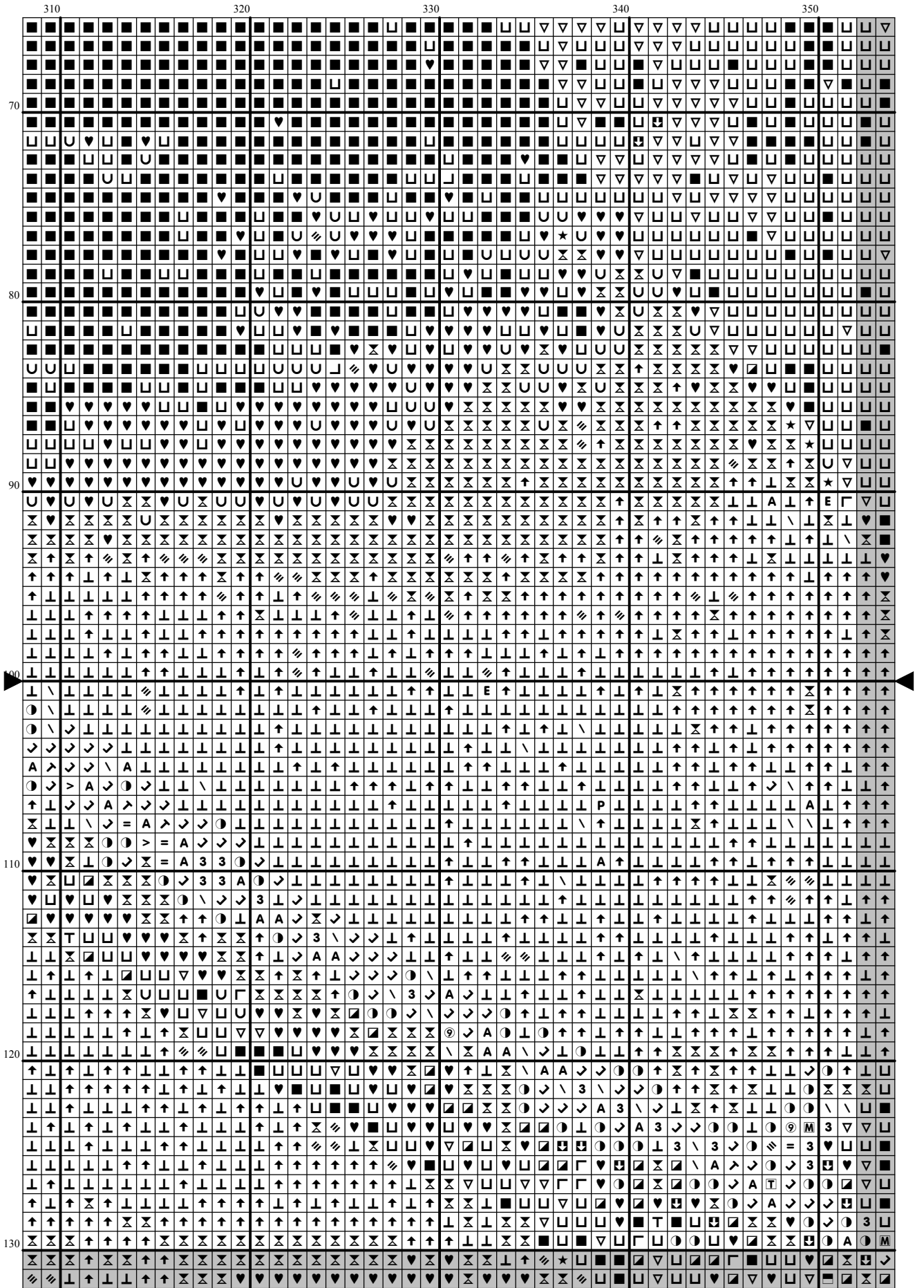




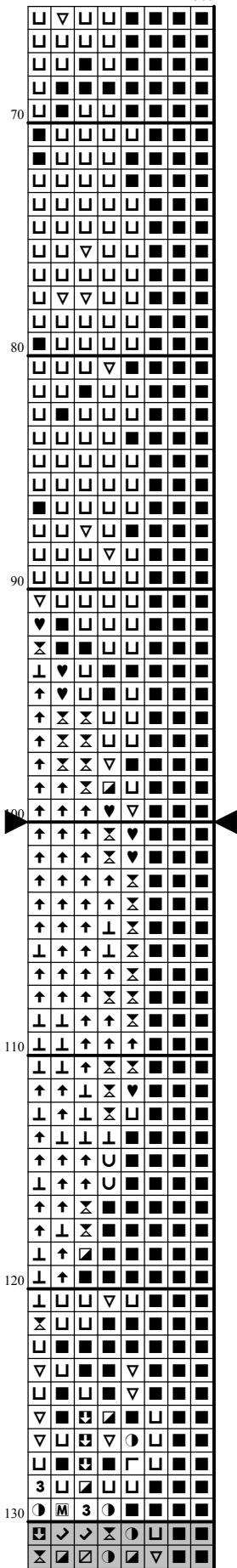


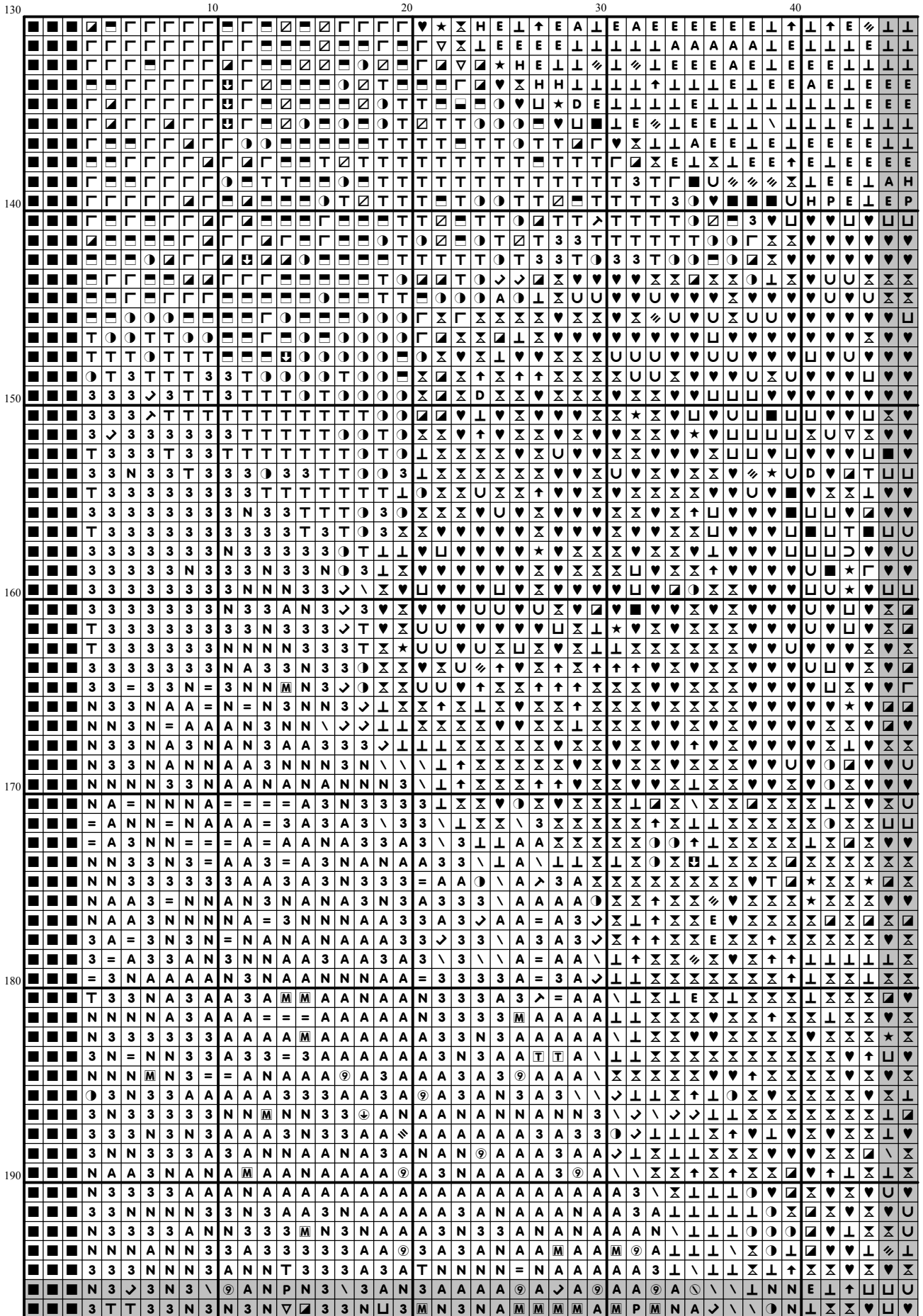


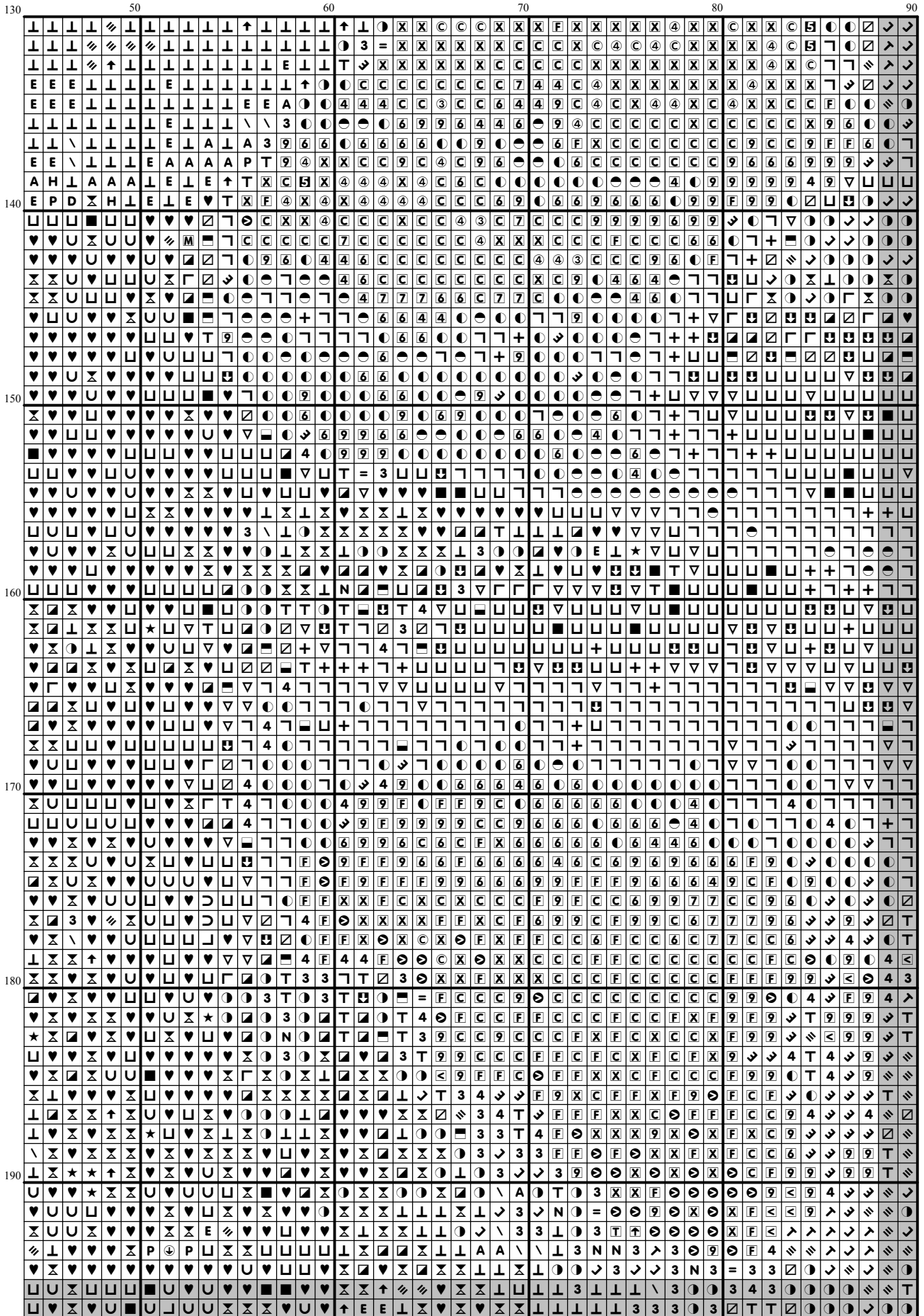


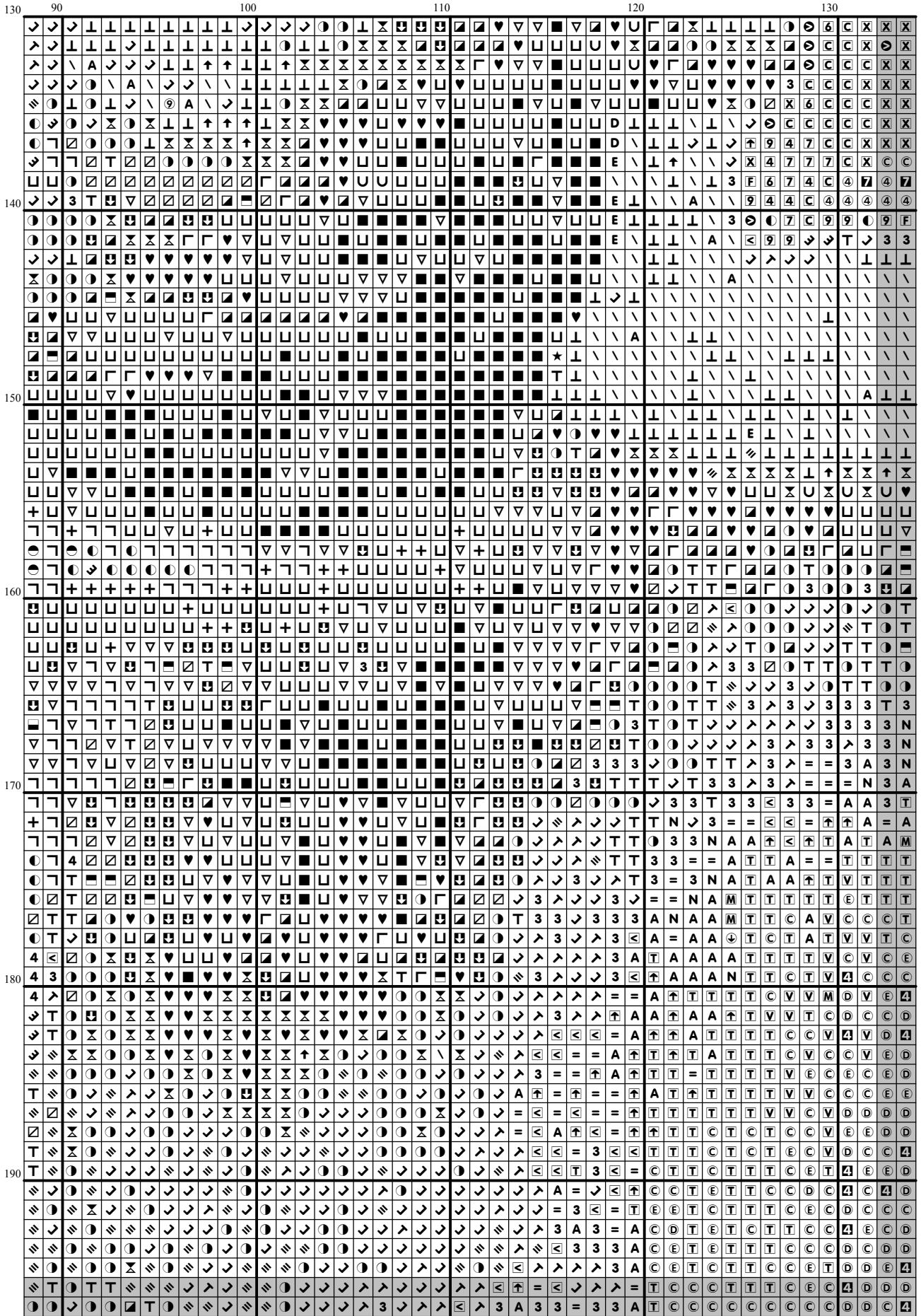


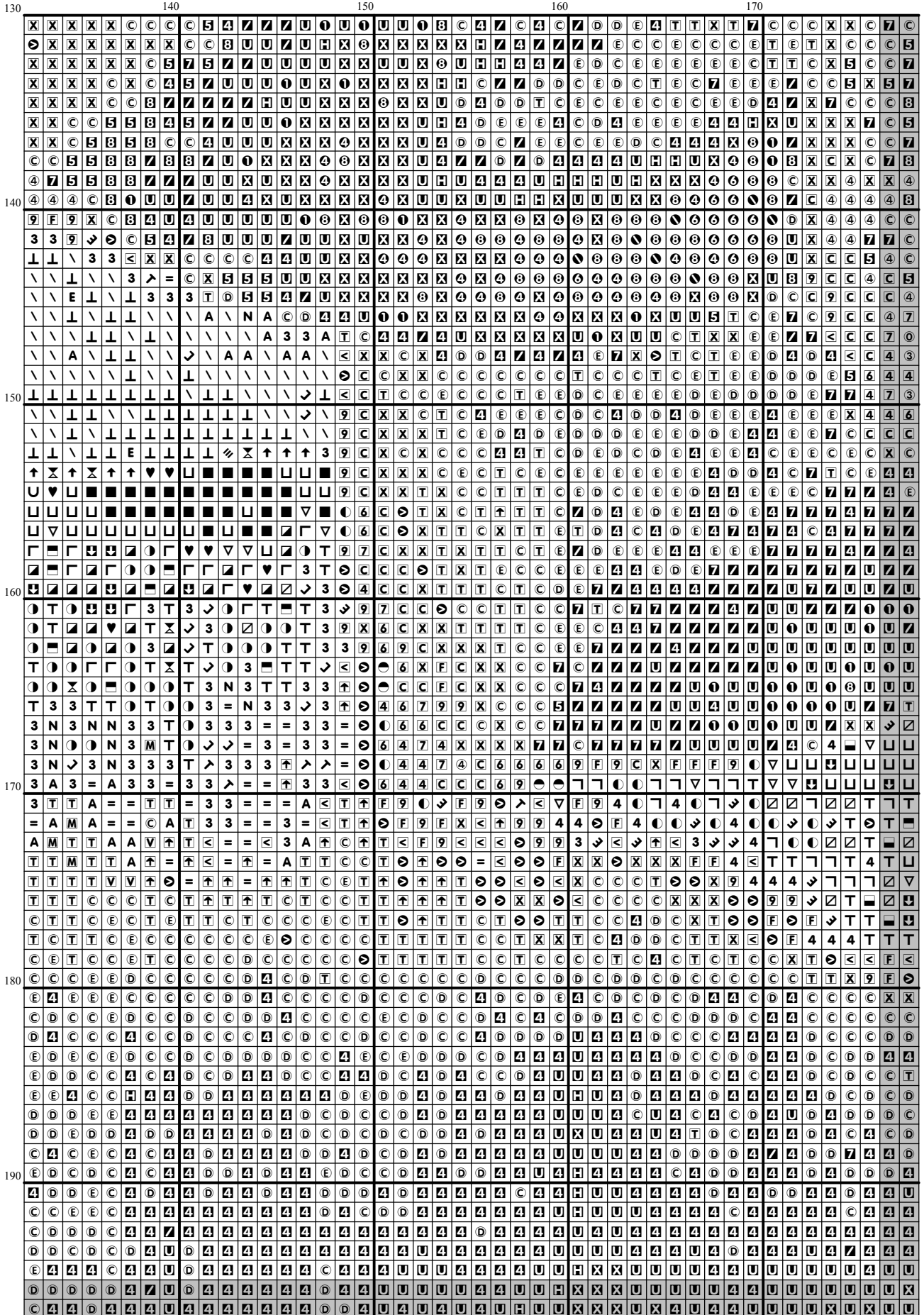
360

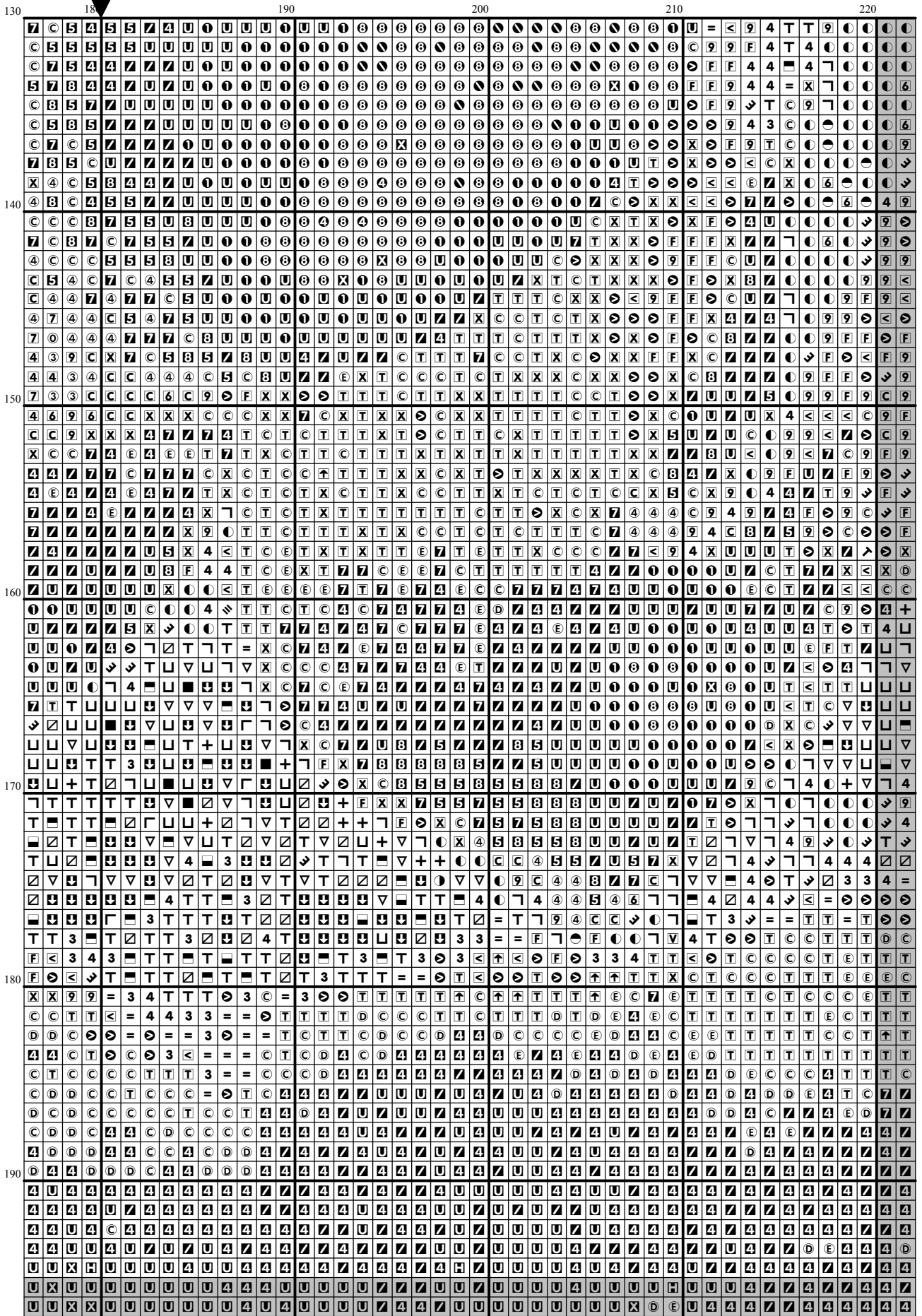




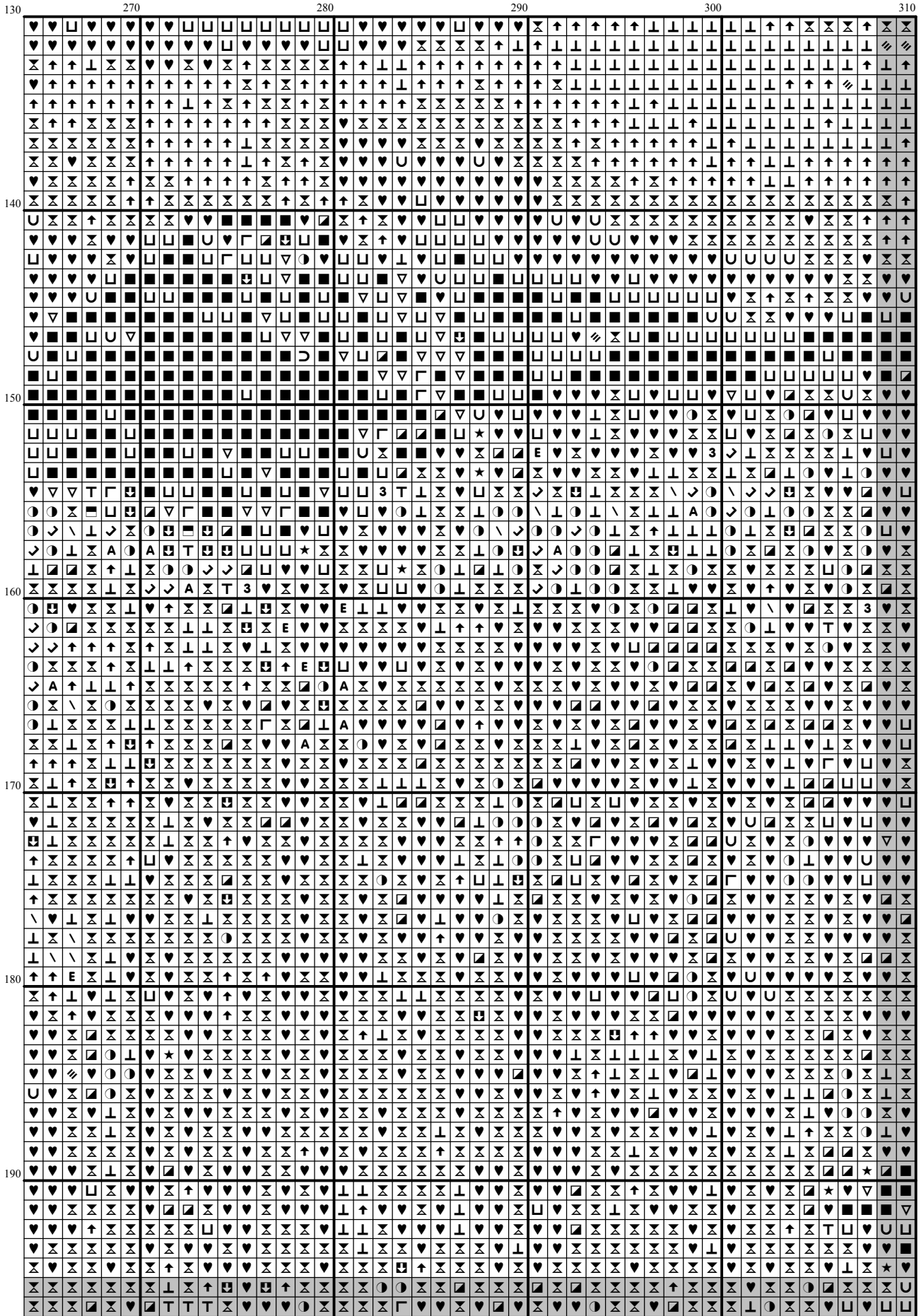


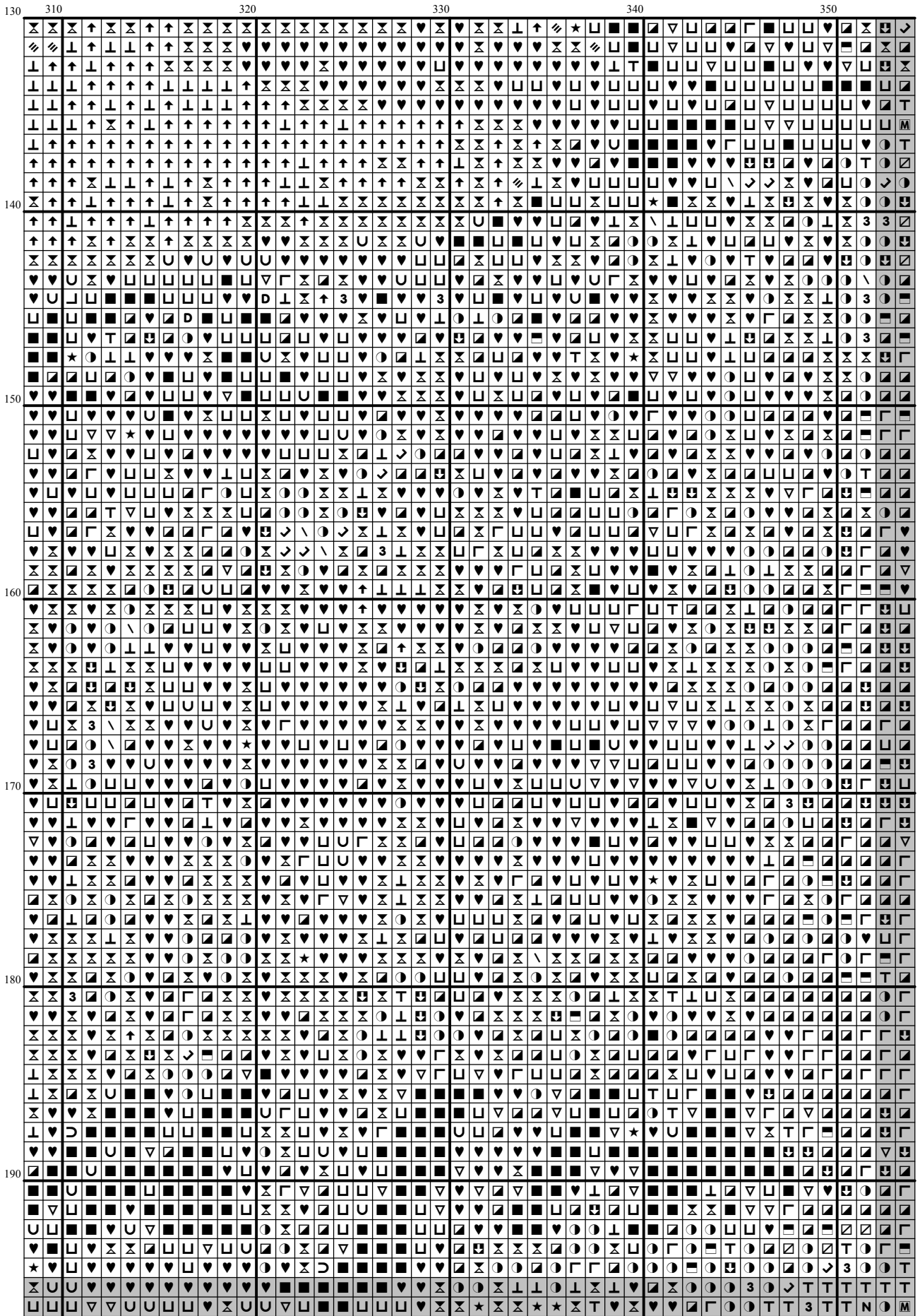


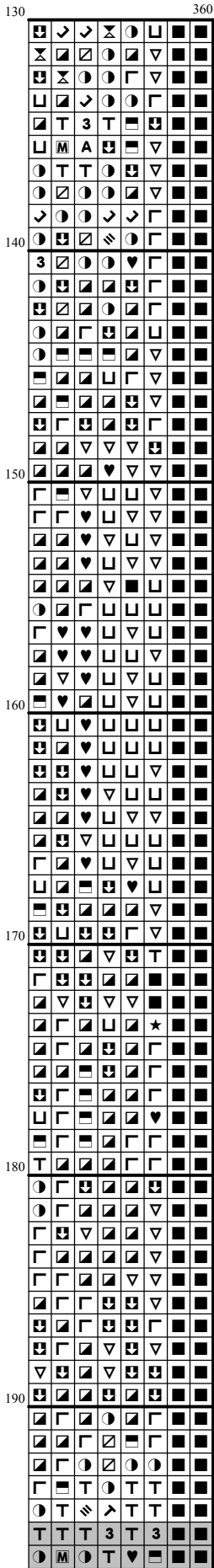


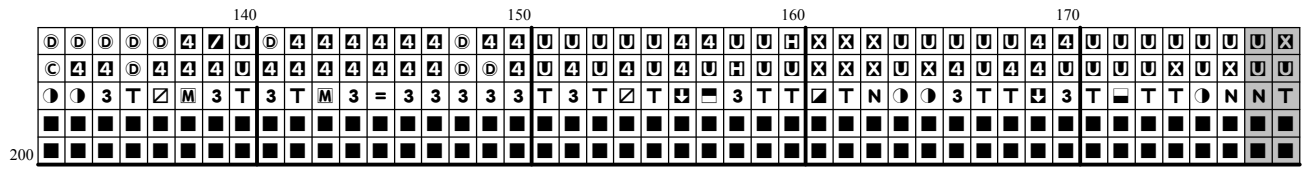


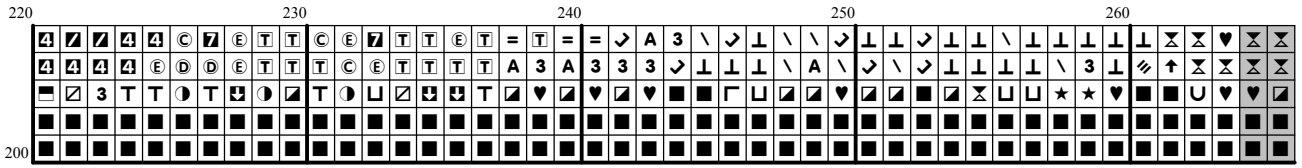
230	230	240	250	260
130	130	130	130	130
140	140	140	140	140
150	150	150	150	150
160	160	160	160	160
170	170	170	170	170
180	180	180	180	180
190	190	190	190	190

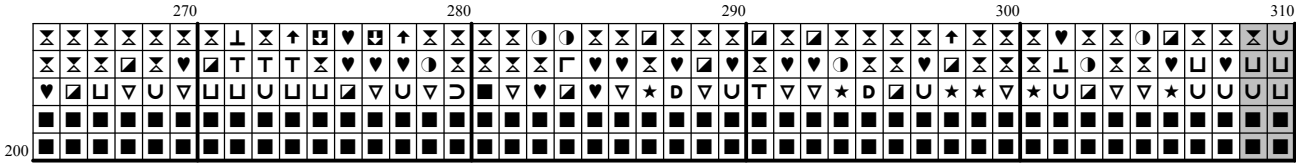




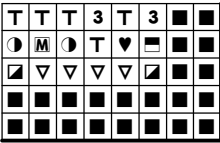








360



200

Instructions and Symbol Key for Design "FR123 Magnolia"

Fabric: 14 count Cream Aida

Stitches: 360 x 200 **Size:** 25.71 x 14.29 inches or 65.31 x 36.29 cm

Colours: DMC

Use 2 strands of thread for cross stitch

Sym	No.	Colour Name	Sym	No.	Colour Name
+	154	Prune rose	◀	167	Dark mustard brown
●	221	Mars red	■	310	Black
◻	355	Brown red	◻	356	Medium terracotta
=	370	Medium mustard	⊙	371	Green plains
●	400	Brown	⊗	407	Clay brown
◻	420	Hazelnut	▮	422	Light oak
↘	434	Cigar brown	▮	437	Camel
\	470	Olive green	└	520	Dark fern green
◻	522	Trellis green	⊕	524	Light grey green
⊕	543	Shell beige	>	581	Grashopper green
T	610	Dark golden brown	3	611	Sisal brown
T	612	String brown	⊕	613	Rope brown
N	640	Green grey	M	642	Earth grey
▮	644	Light green grey	D	645	Dark steel grey
H	646	Platinum grey	└	647	Rock grey
▮	676	Savannah gold	E	680	Dark old gold
⓪	728	Hops yellow	●	730	Khaki green
↘	732	Bronze green	▮	738	Sahara cream
⊕	739	Dune cream	⊗	742	Light tangerine
▮	743	Medium yellow	▮	758	Dawn rose
▮	782	Wicker brown	▮	801	Mink brown
⊕	822	Cotton cream	⊕	830	Green oak brown
↘	831	Green bronze	◻	834	Light brass
▮	839	Root brown	▮	841	Deer brown
▮	842	Beige rope	└	844	Pepper black
4	869	Coffee brown	└	898	Teak brown
▮	919	Red copper	▮	920	Ochre copper
⊙	921	Burnt ochre orange	♥	934	Algae green
U	935	Undergrowth green	⊗	936	Oaktree moss green
↑	937	Moss green	▽	938	Espresso brown
U	950	Beige	②	976	Nutmeg brown
└	3011	Artichoke green	A	3012	Marsh green
▮	3021	Cliff grey	▮	3031	Dark Mocha brown
⊕	3032	Dark antique silver	⊗	3033	Antique silver
↑	3045	Coffee cream	★	3051	Olive tree green
P	3052	Silver green	⊕	3346	Hunter Green
E	3363	Herb green	⓪	3364	Sage green
L	3371	Ebony	⊕	3771	Sandy rose
F	3772	Rosy tan	⓪	3774	Pale desert sand
③	3776	Dark nutmeg brown	④	3778	Light terracotta
▮	3781	Metal brown	⓪	3782	Gingerbread brown
P	3820	Maze yellow	▮	3821	Straw yellow
B	3826	Golden brown	▮	3852	Mustard yellow
◻	3855	Autumn gold	└	3857	Dark red wine
⊕	3863	Otter brown	©	3864	Light mocha brown
●	ECRUT	ECRUT			

This chart has been designed and printed with our best intentions of being without mistakes. However, the possibility of human error, printing mistakes or the variation of individual stitching does exist, and we regret that we cannot be responsible for this.

Note: The shaded blocks on the chart represent overlapping stitches.
Copyright © Classic Cross Stitch 2005 All rights reserved.