

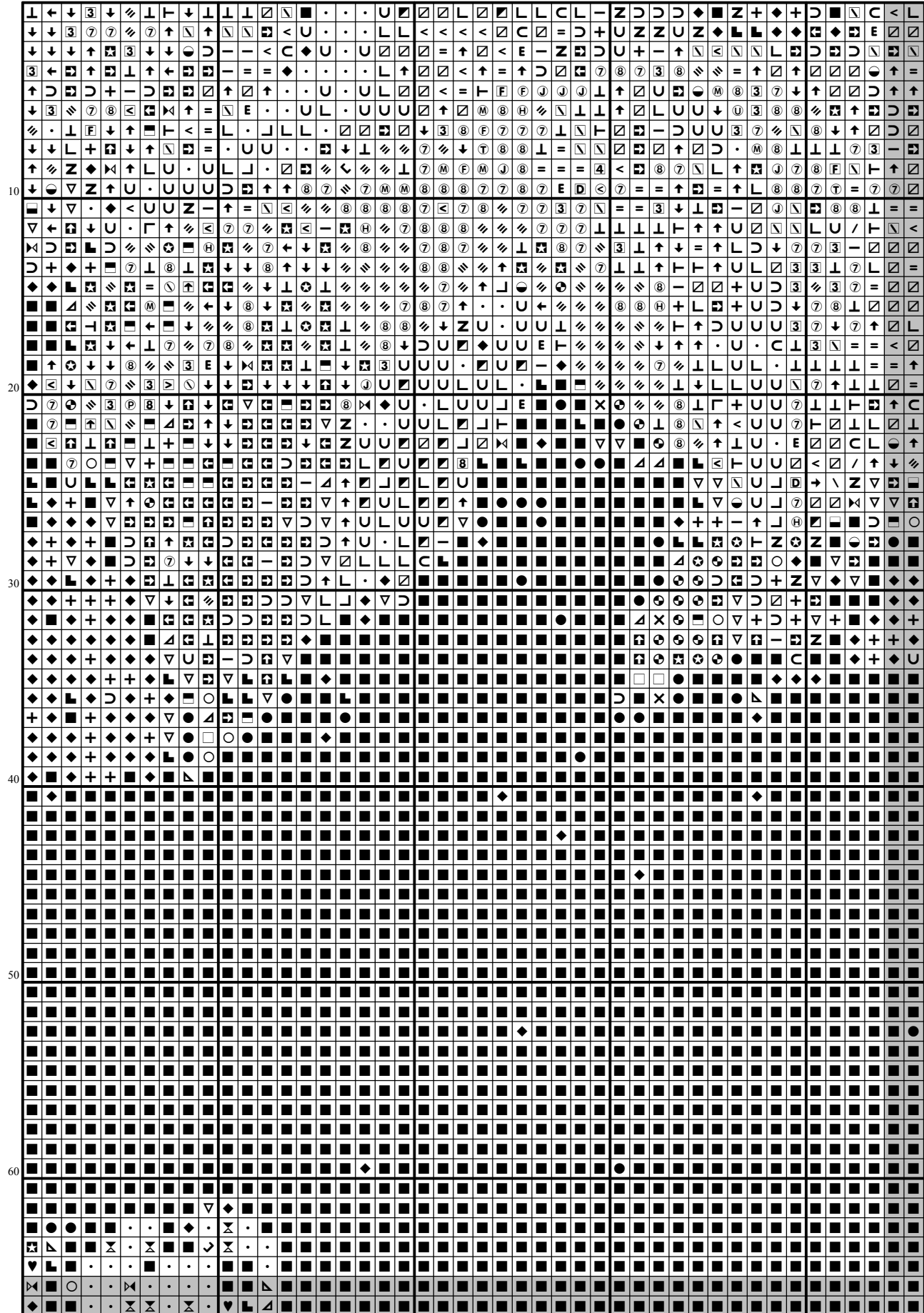
220

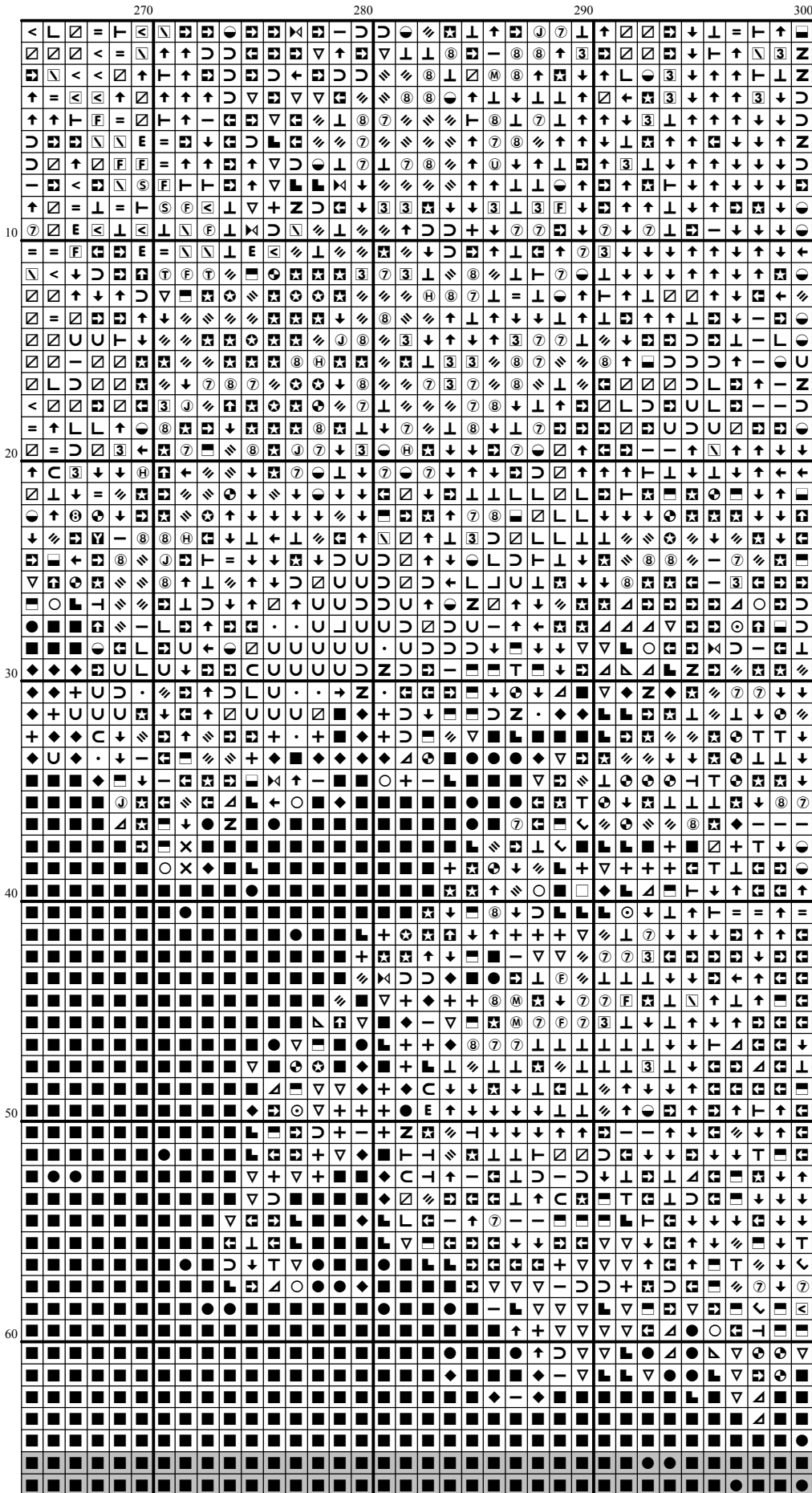
230

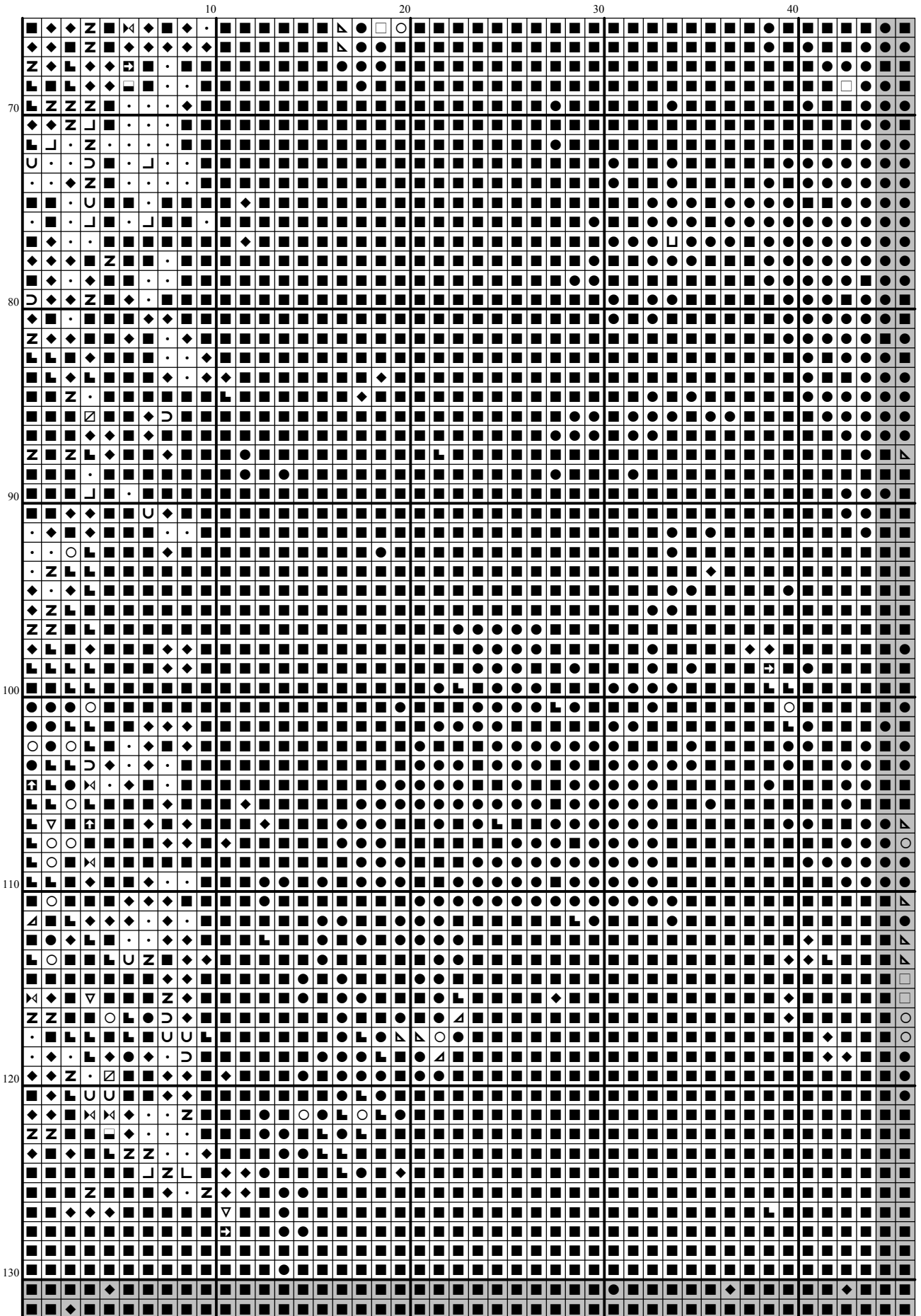
240

250

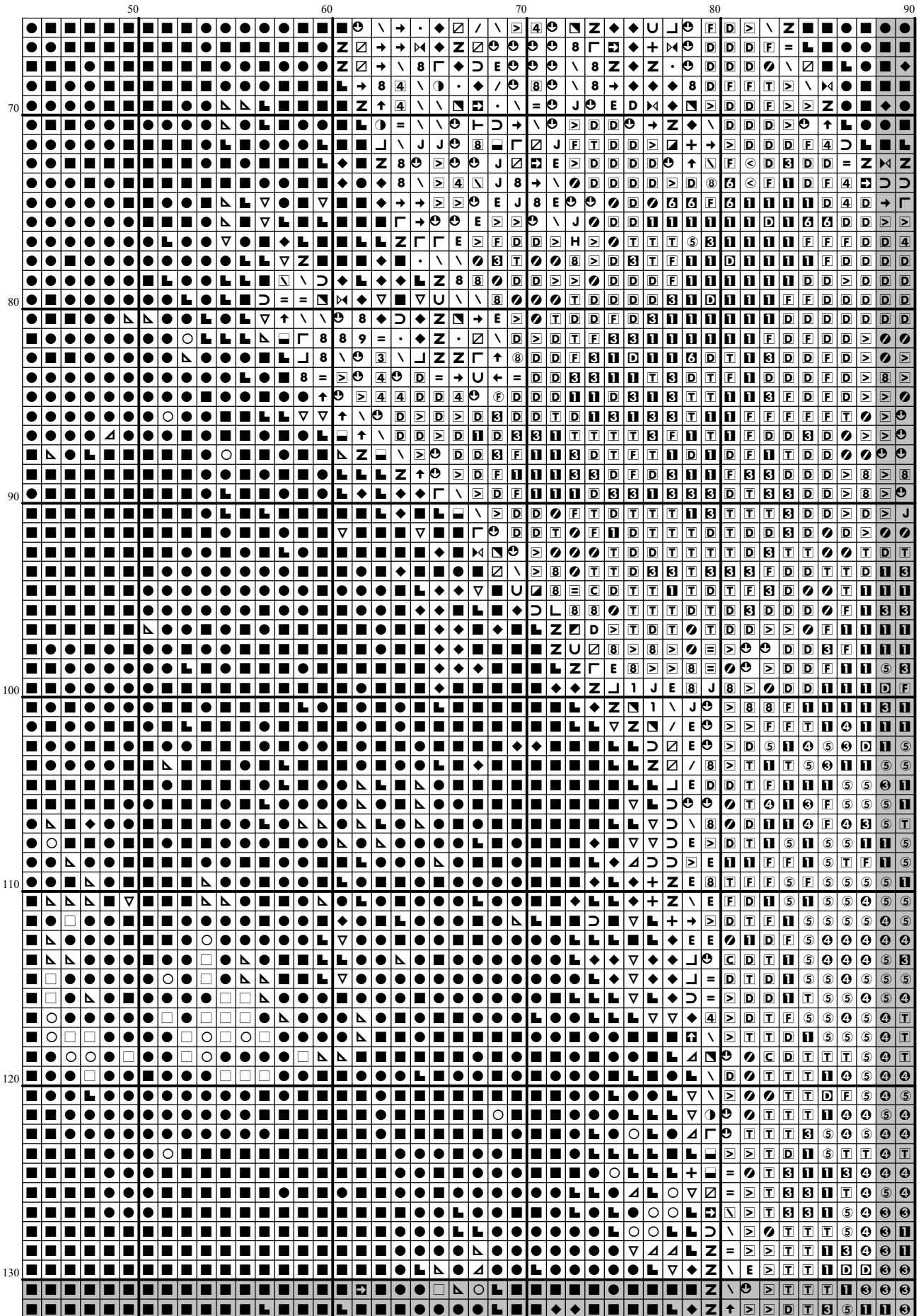
260

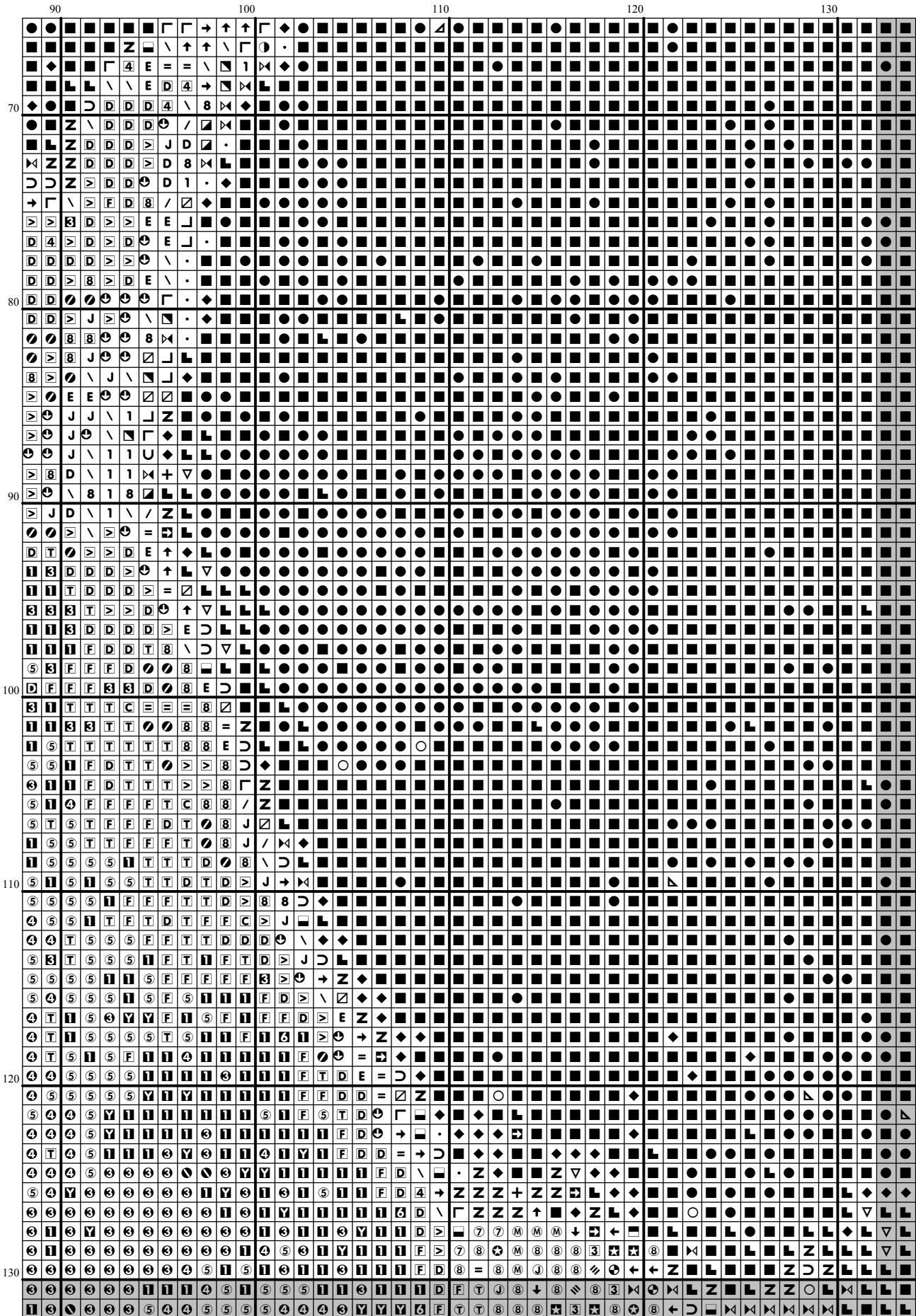




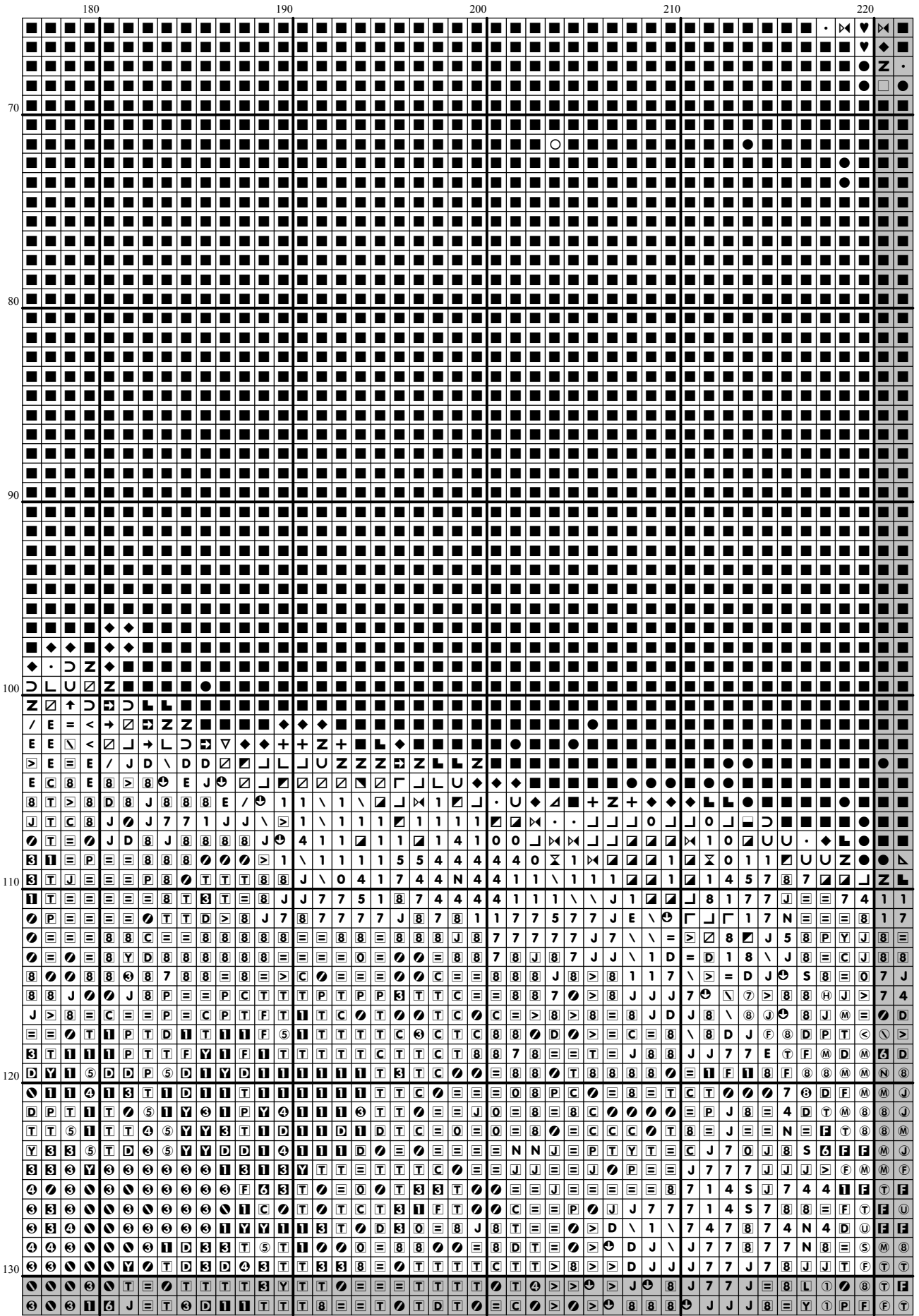




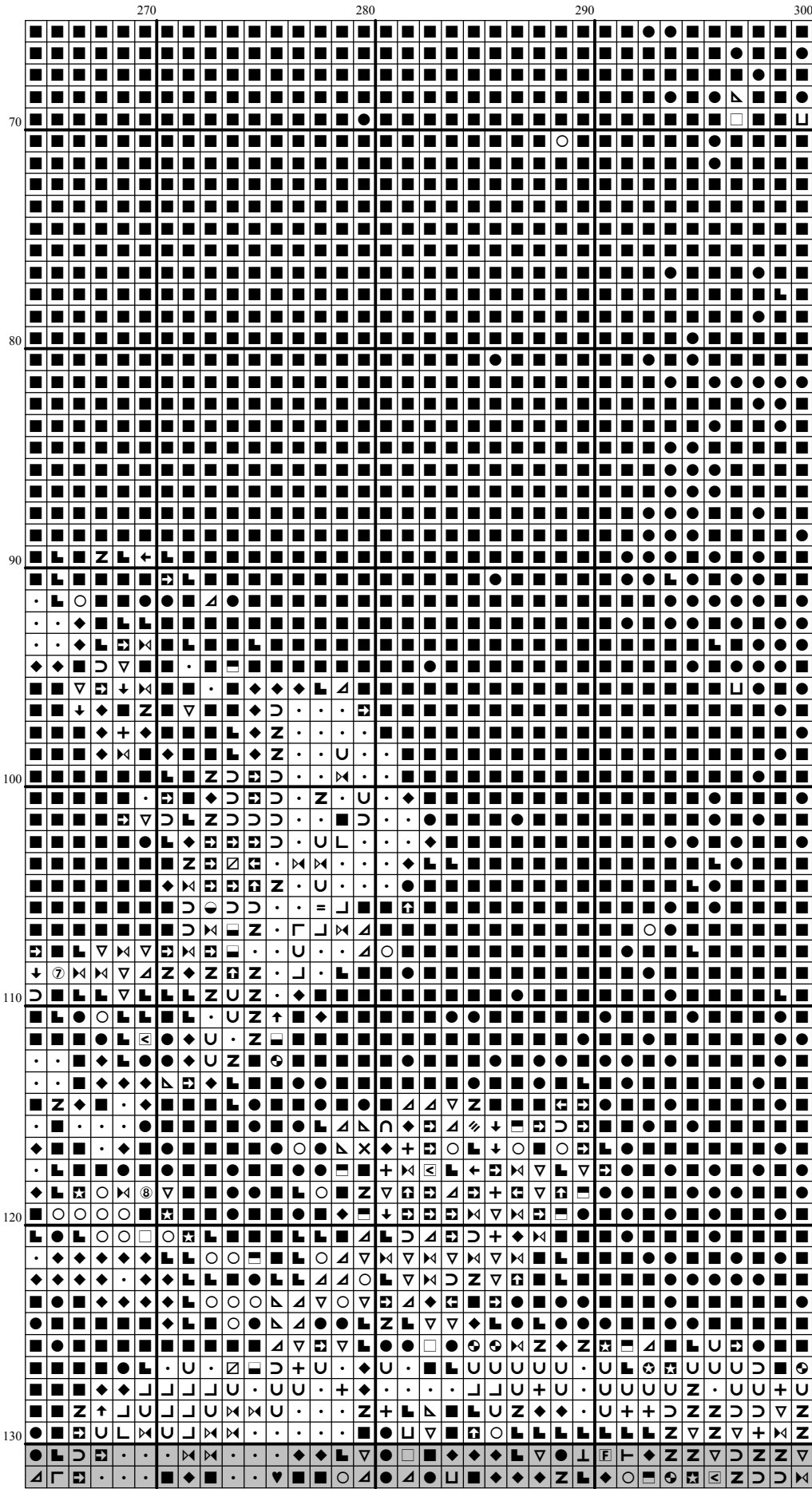


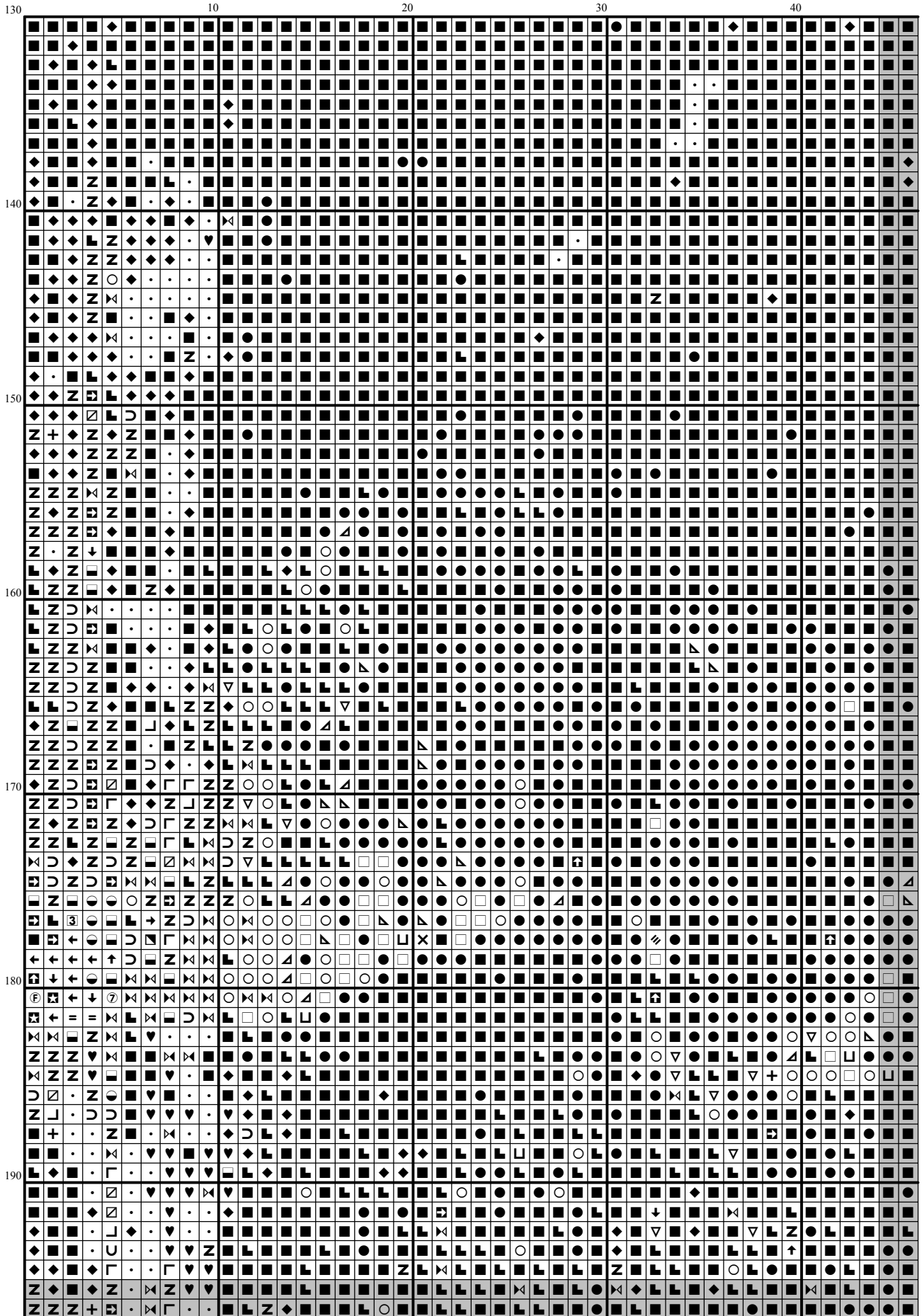


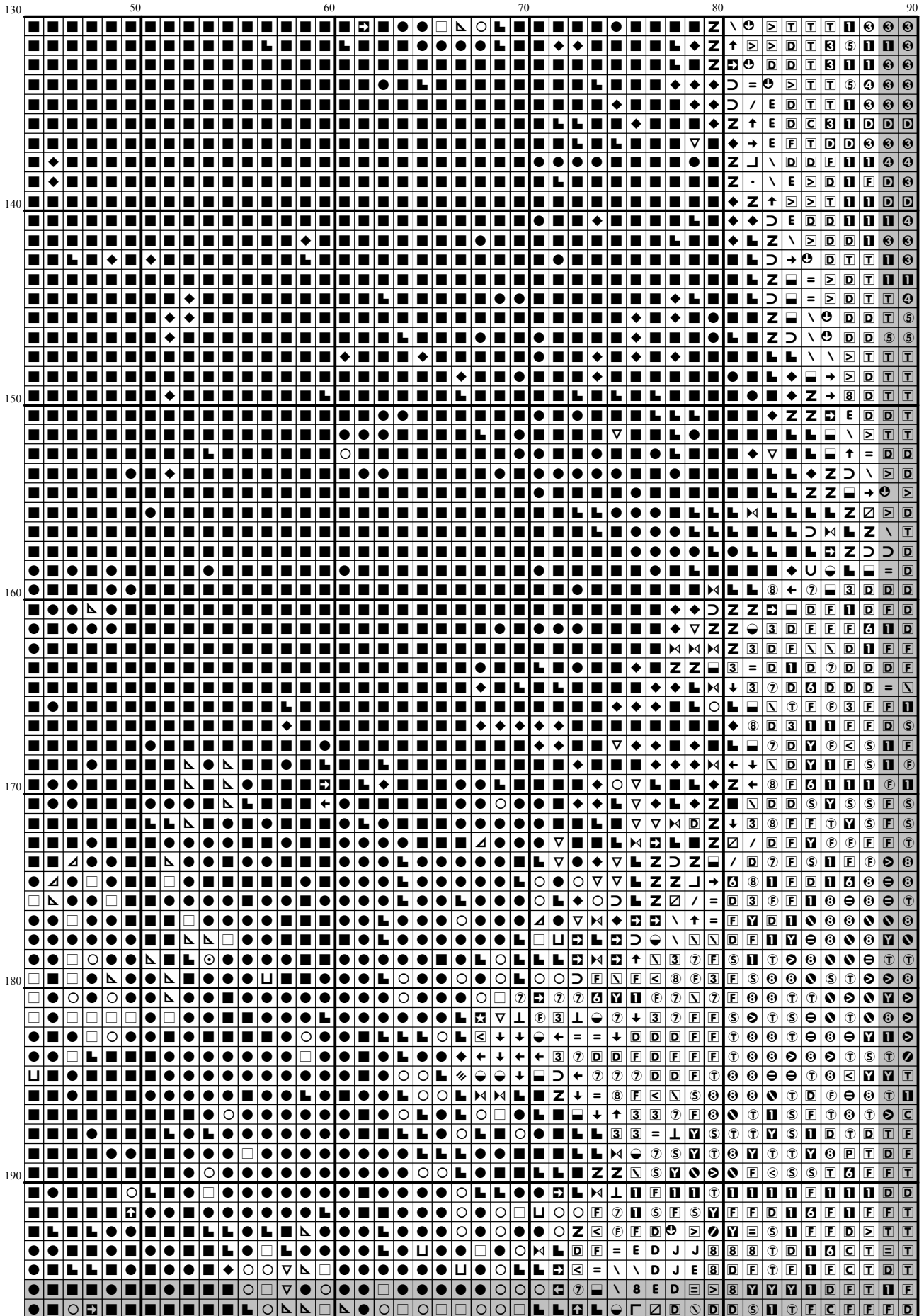




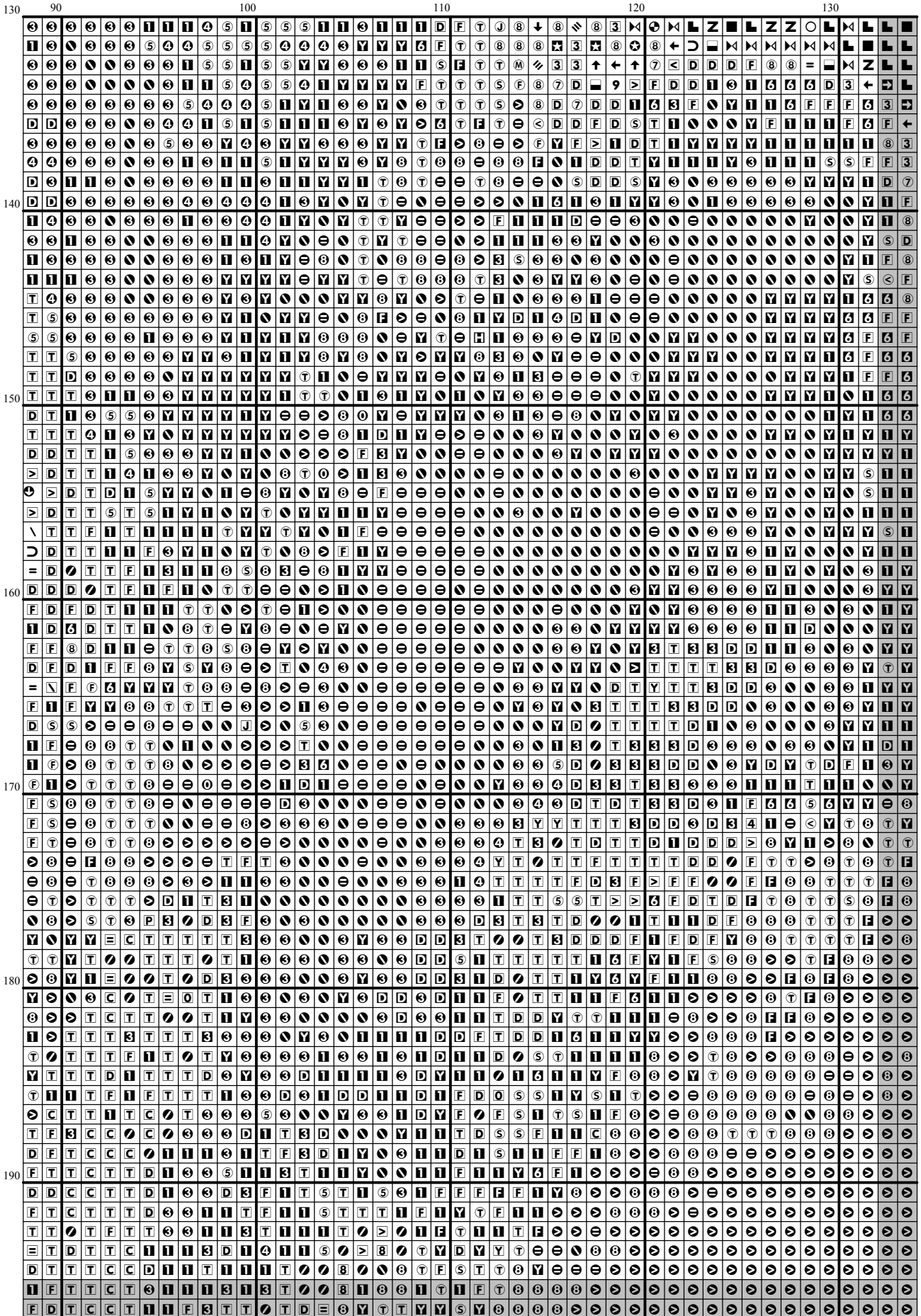


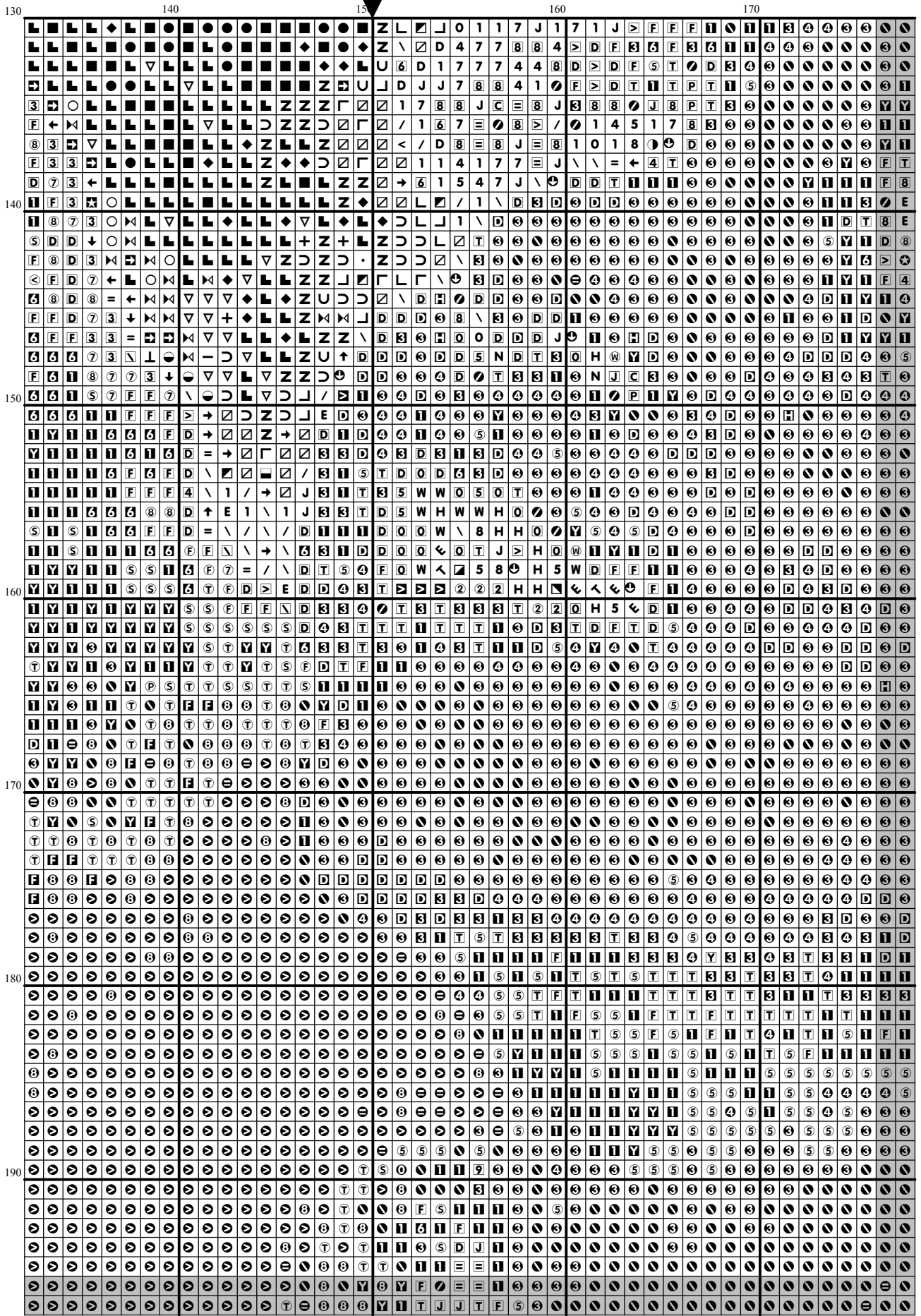






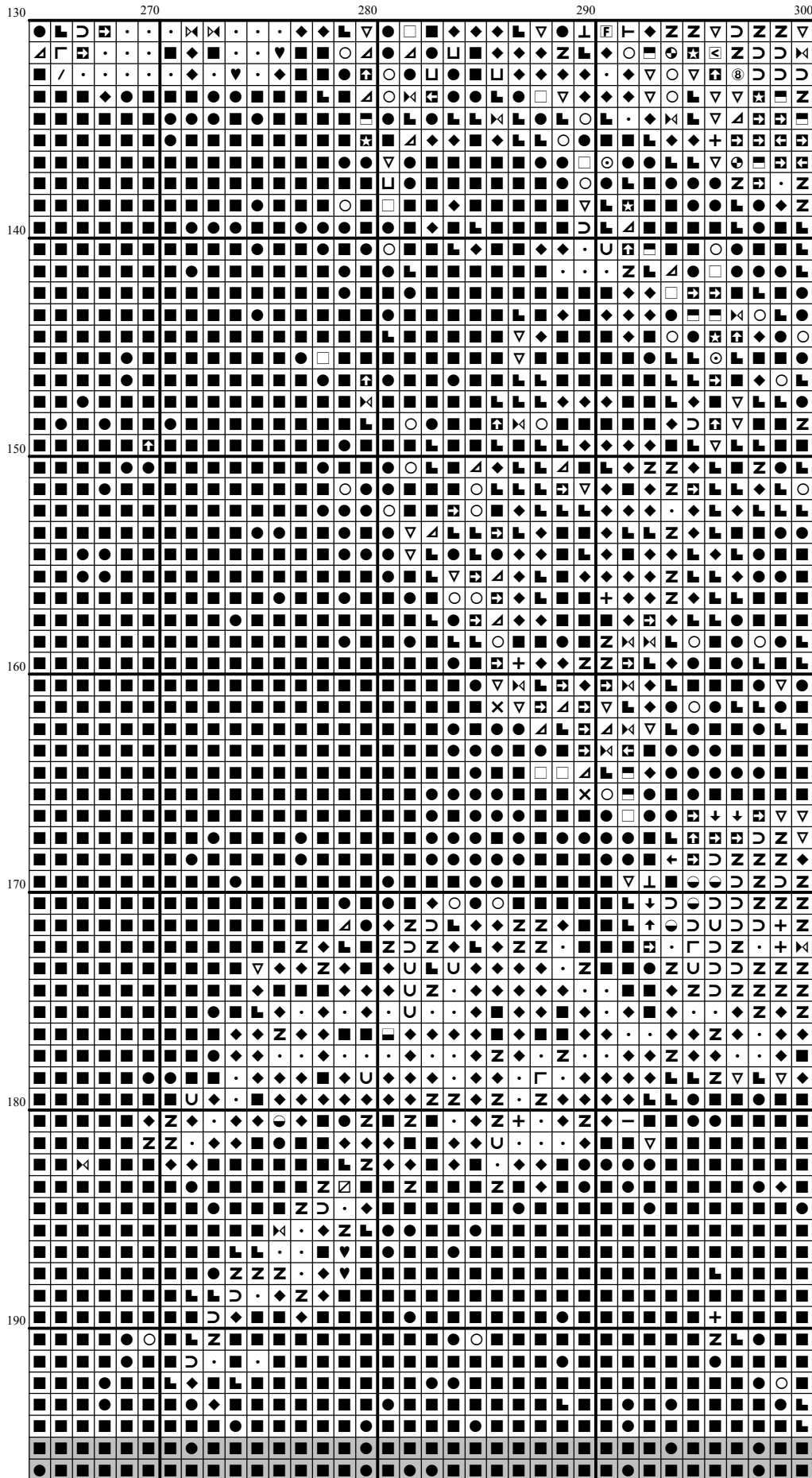


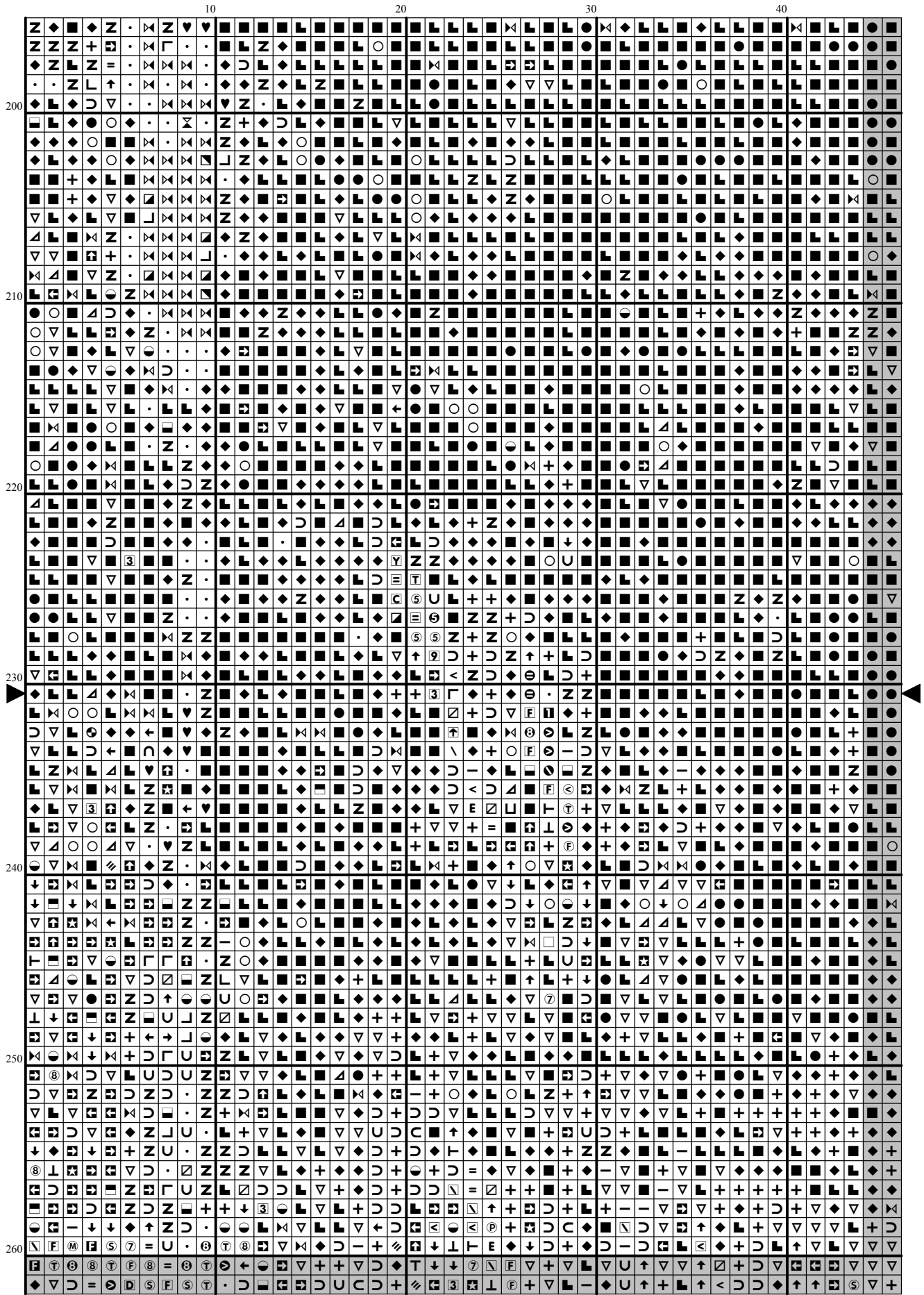


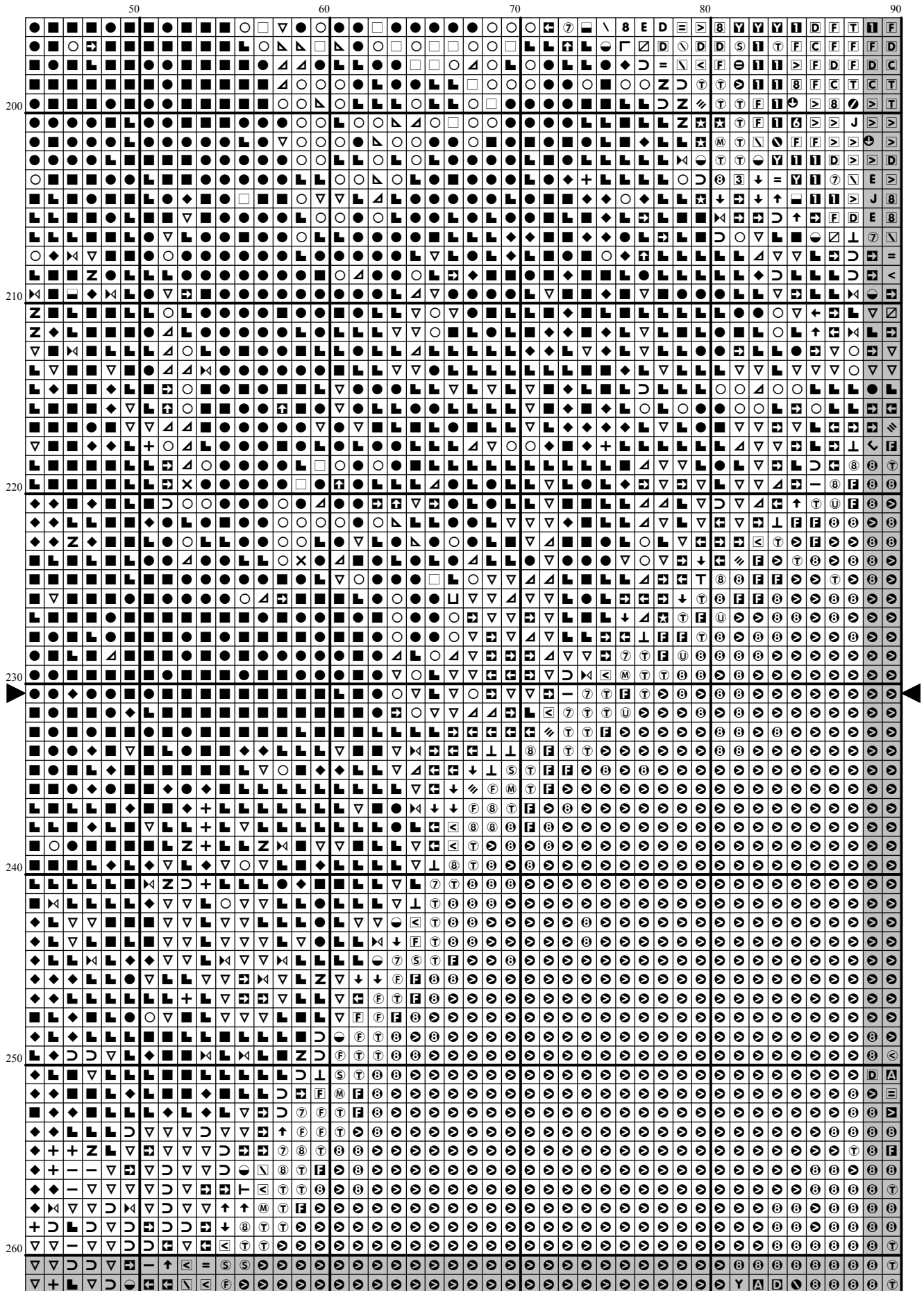


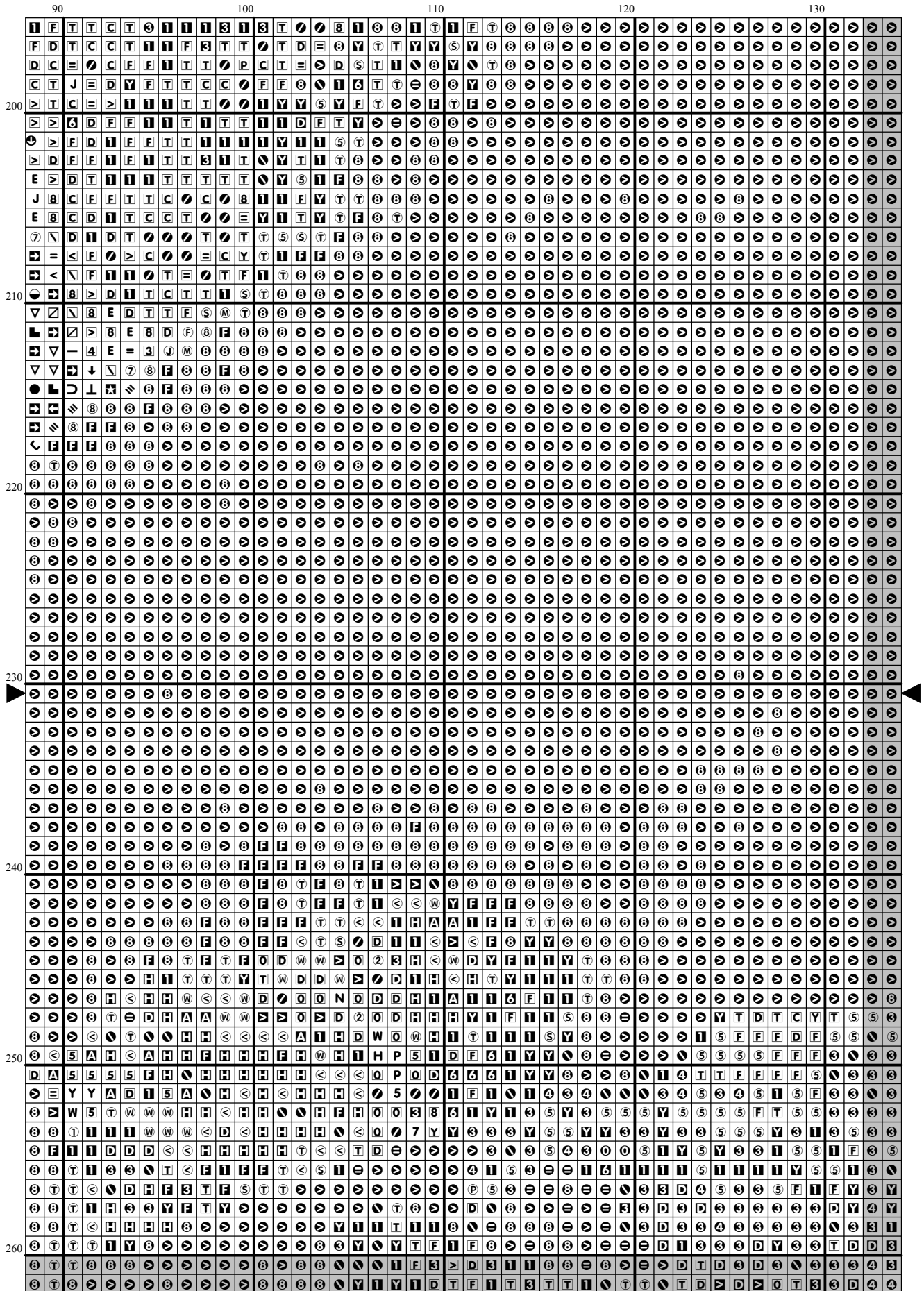
130	180	190	200	210	220
140					
150					
160					
170					
180					
190					



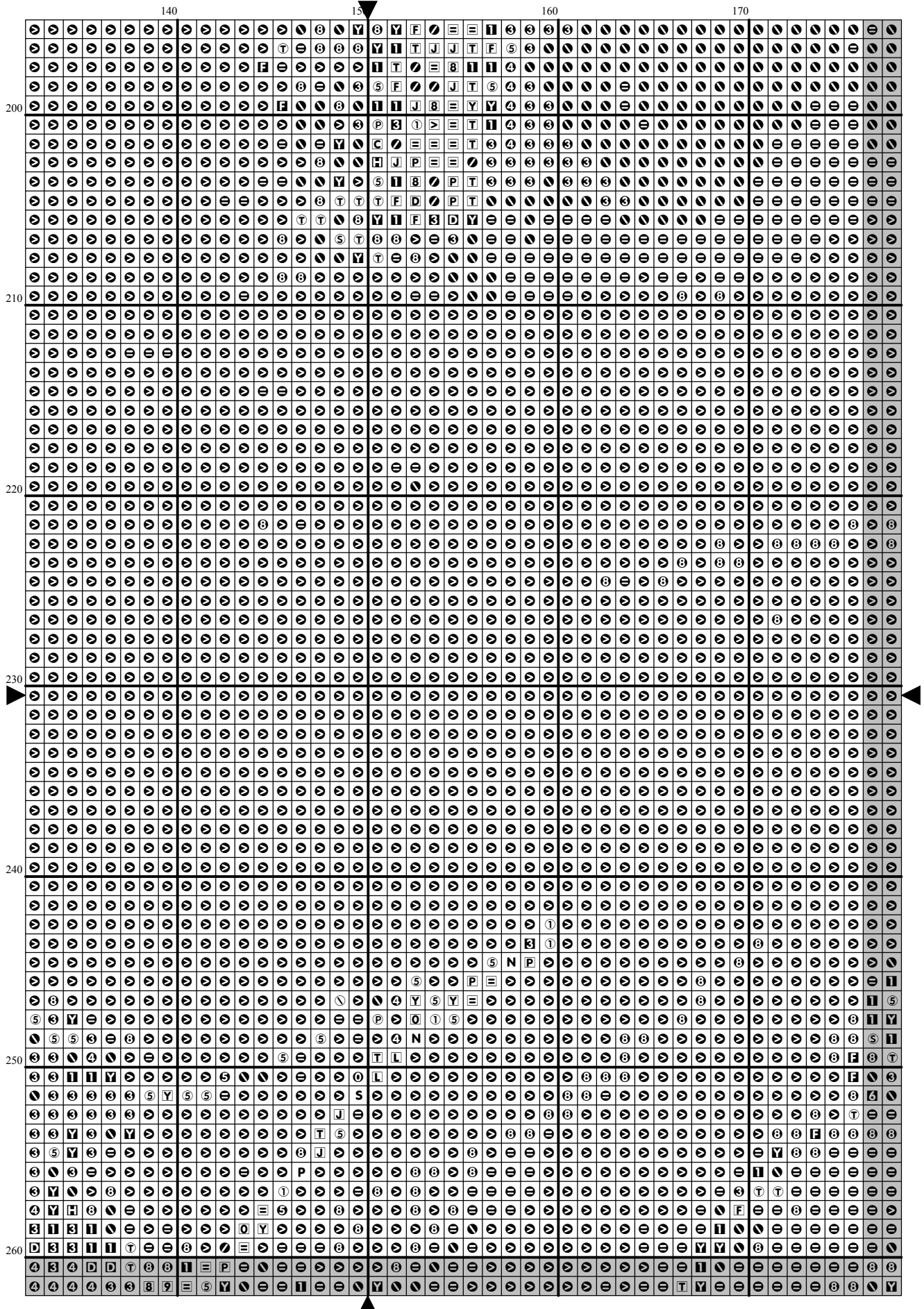


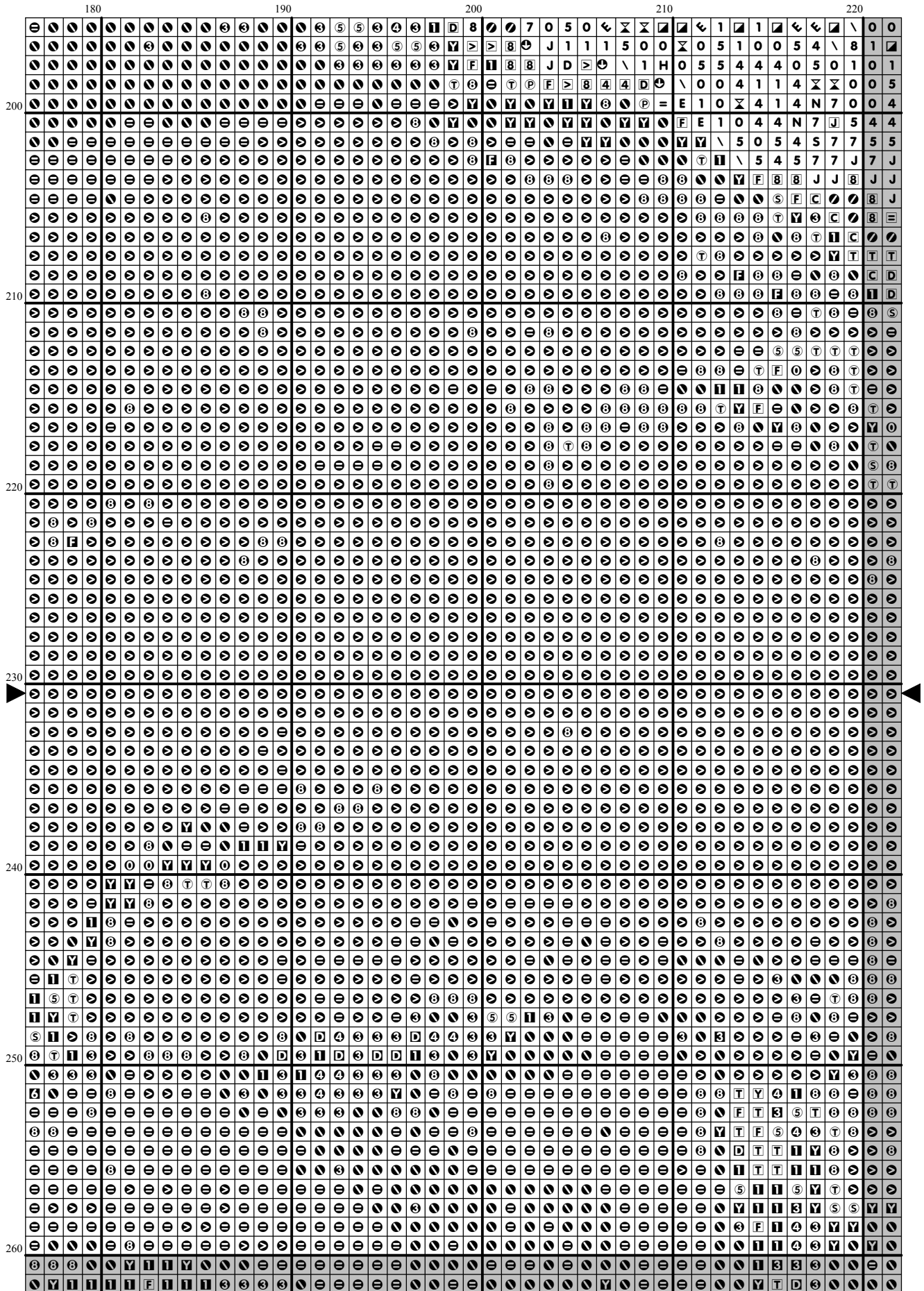




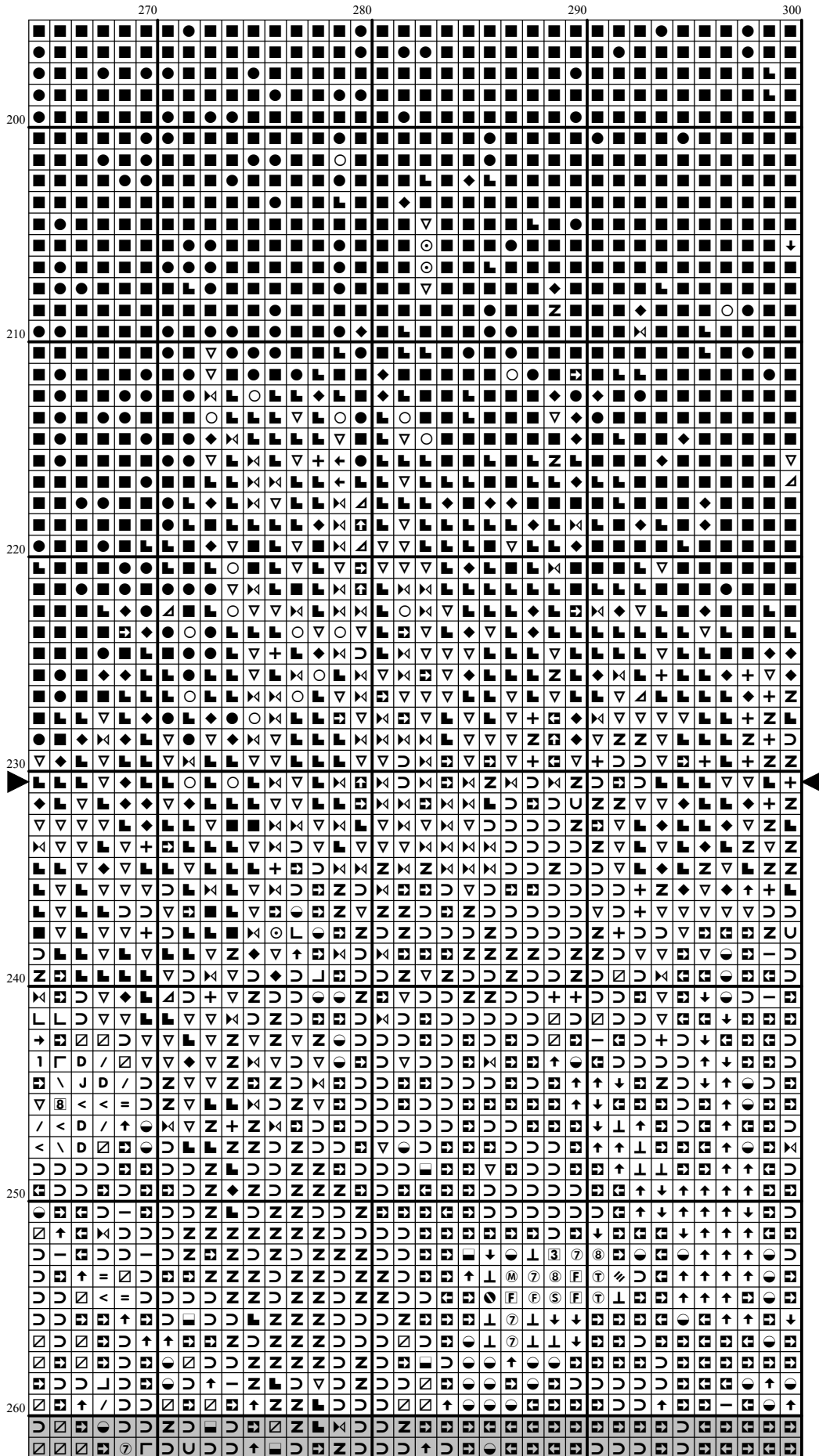


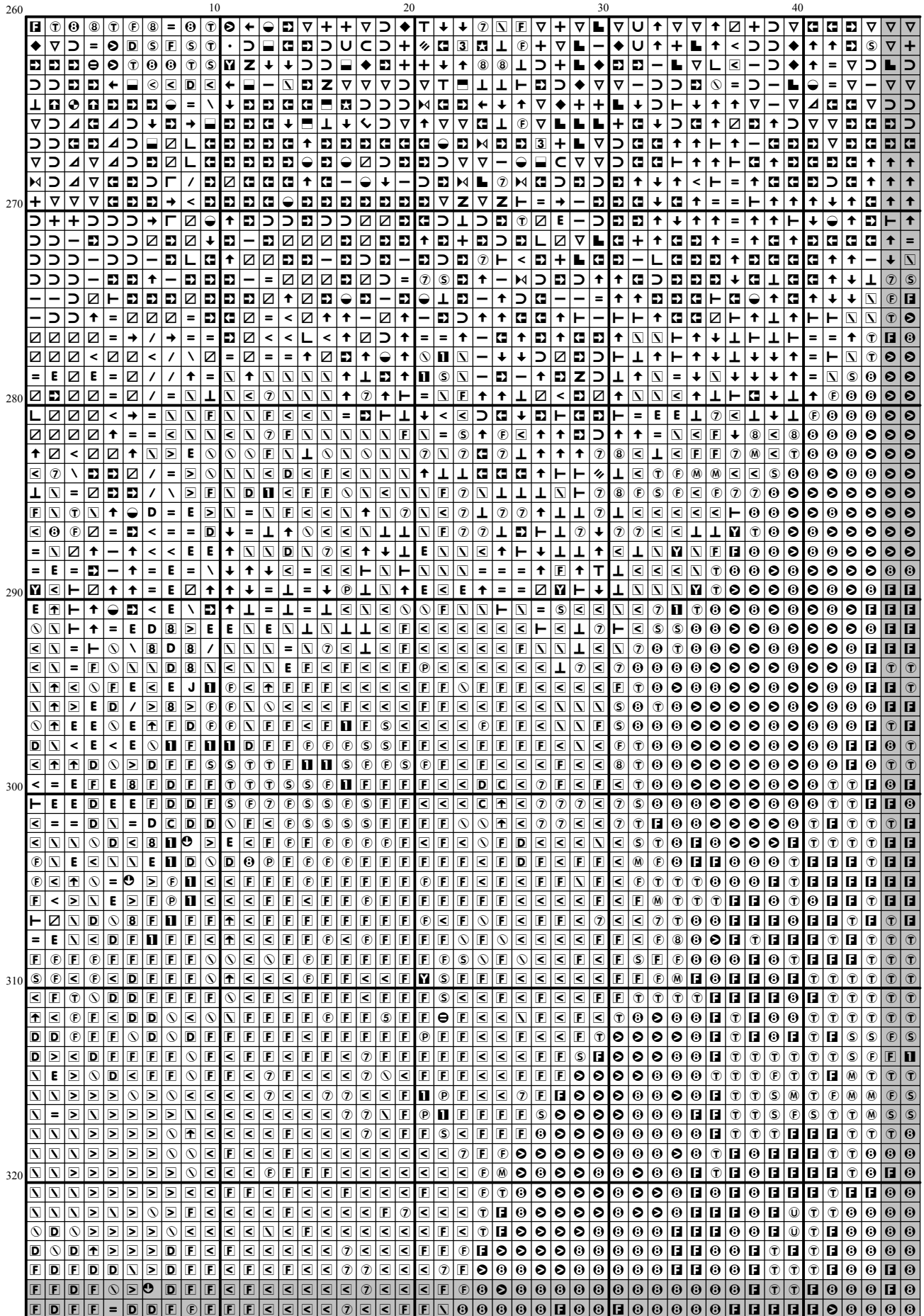


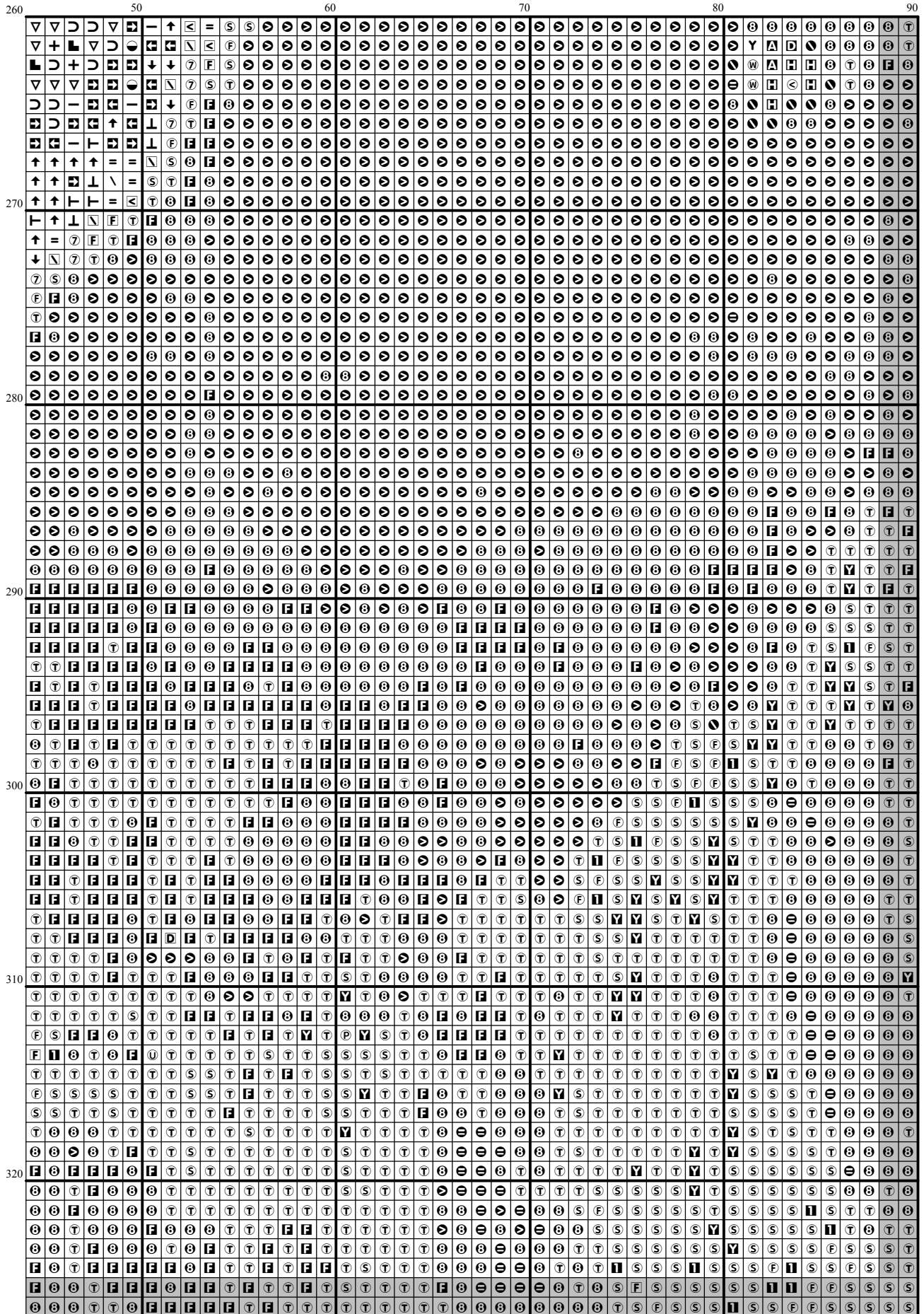


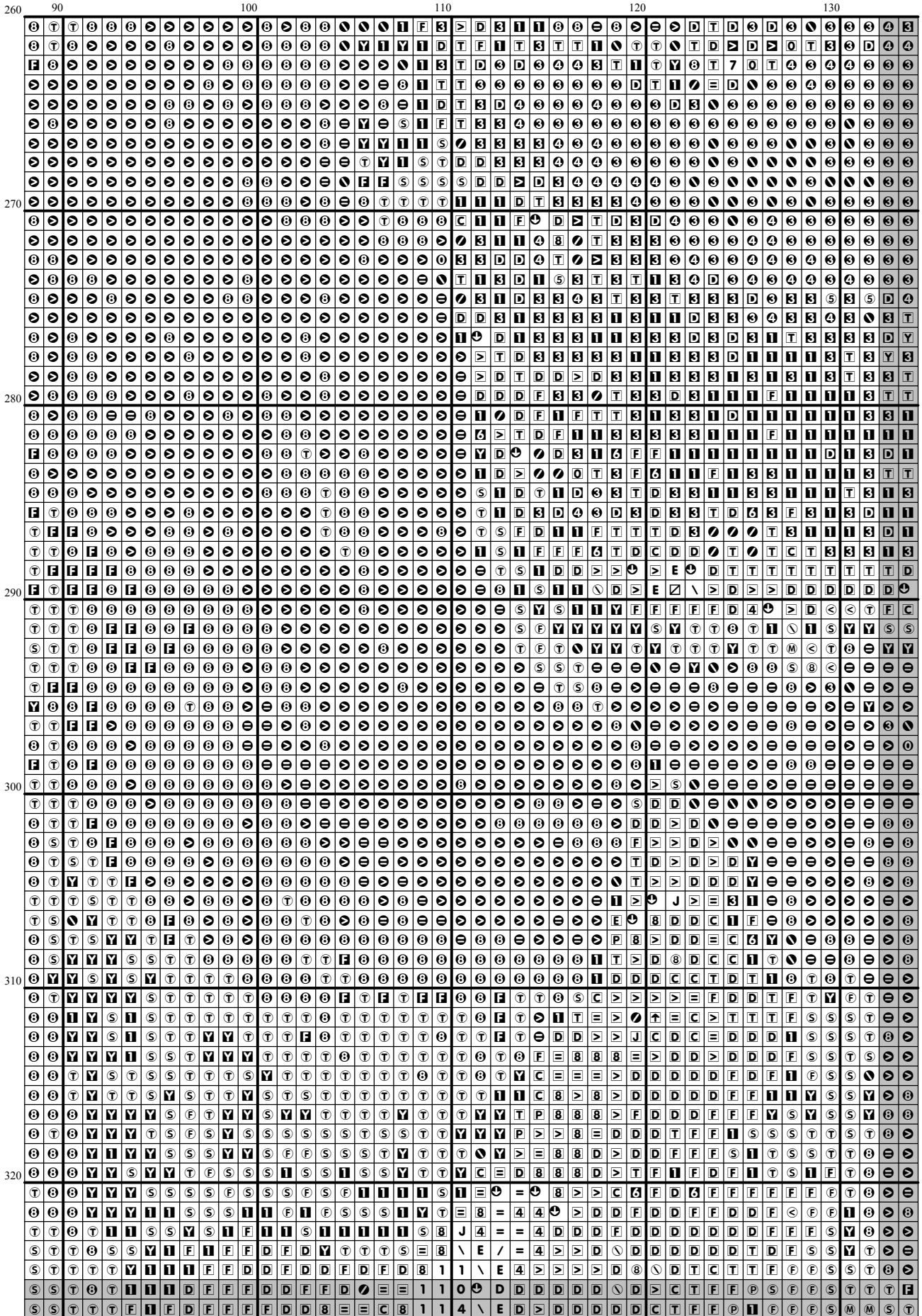






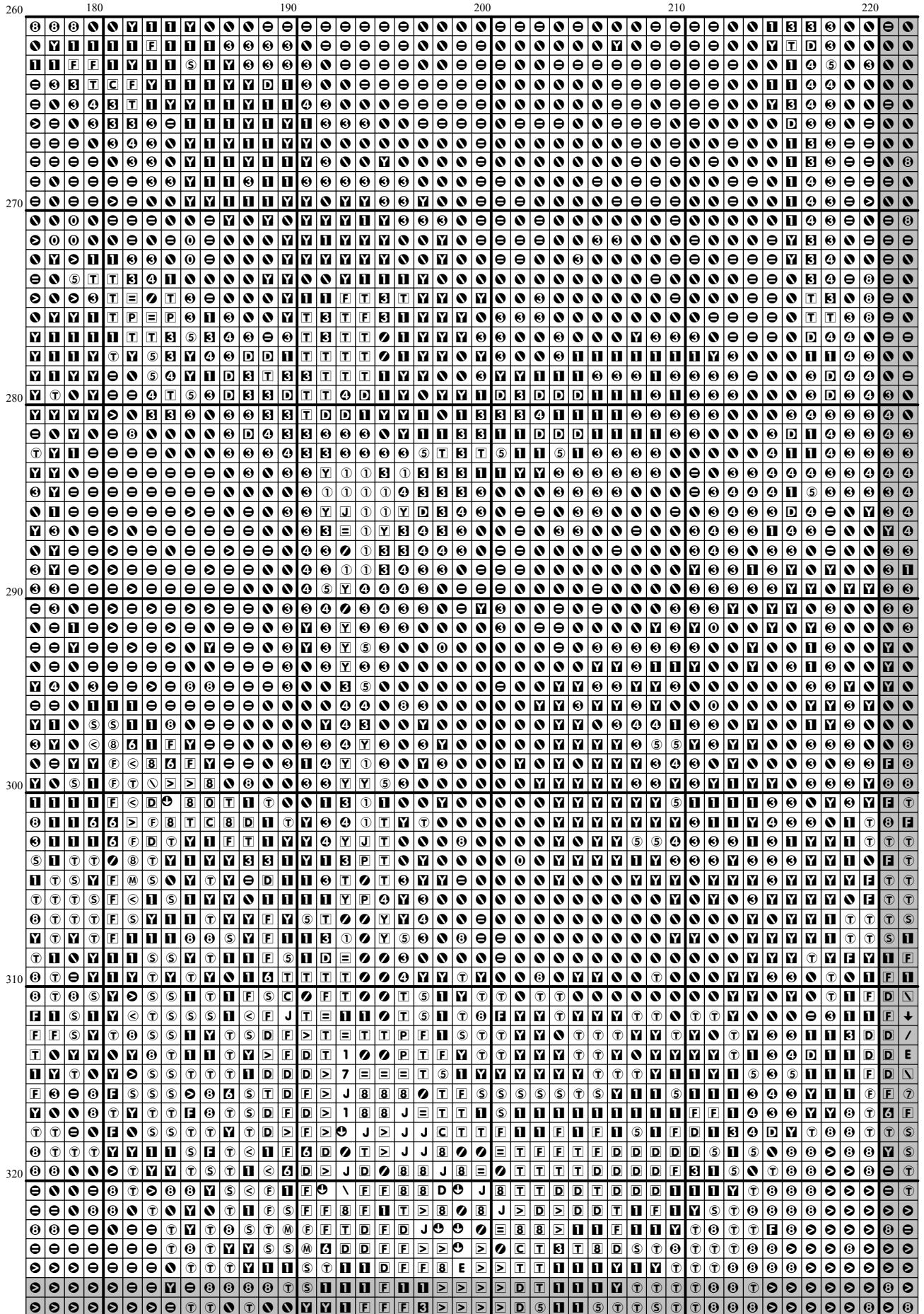


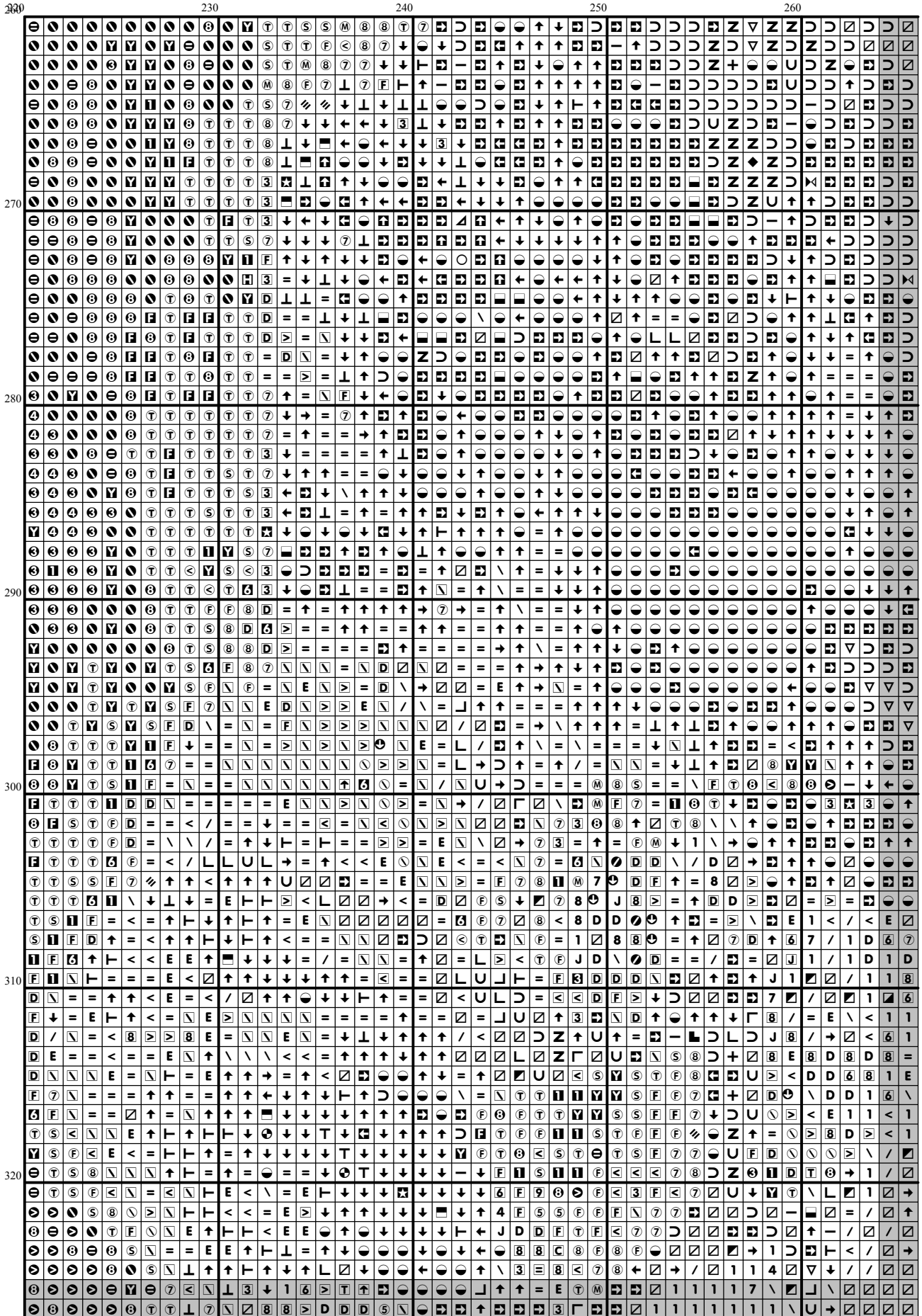


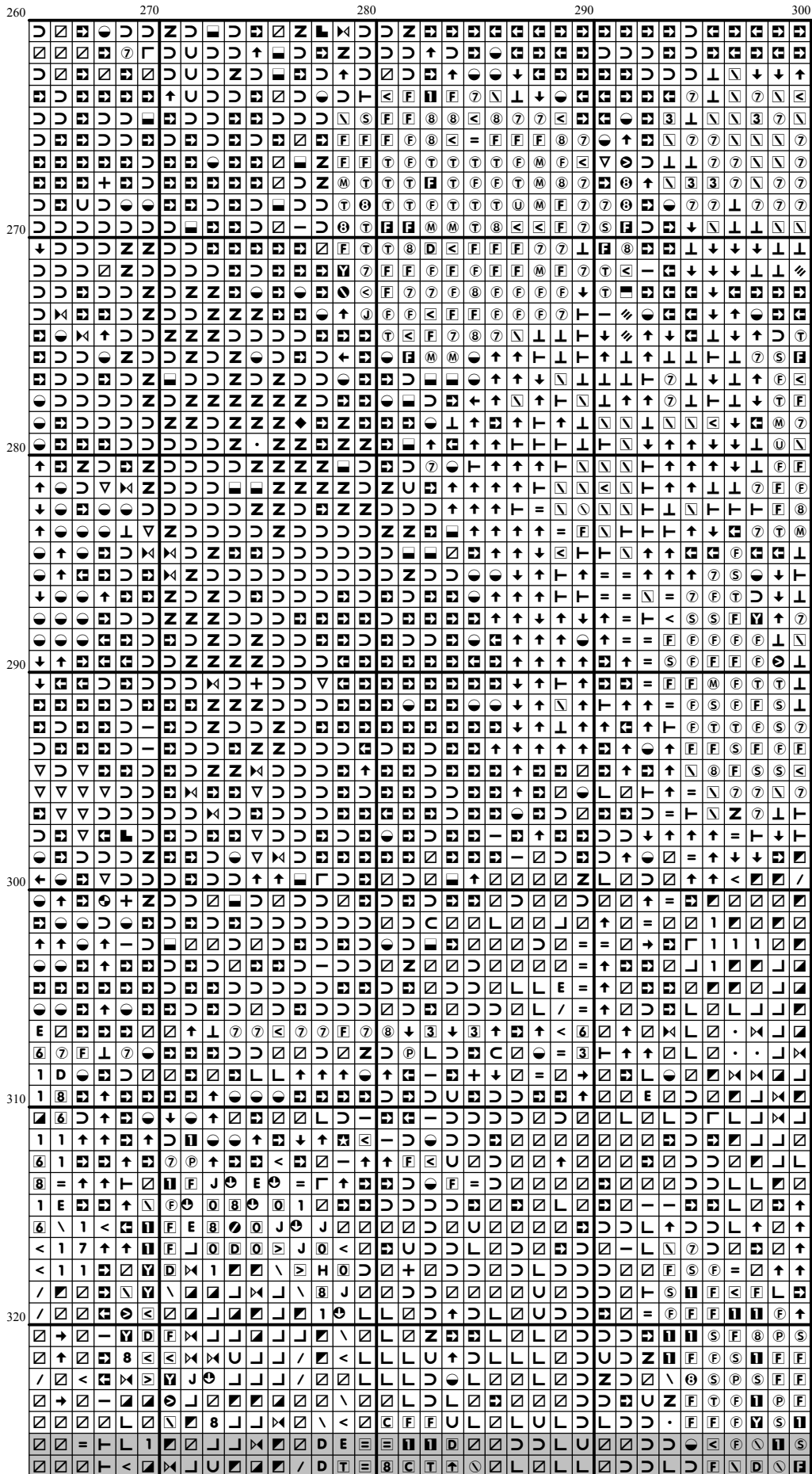




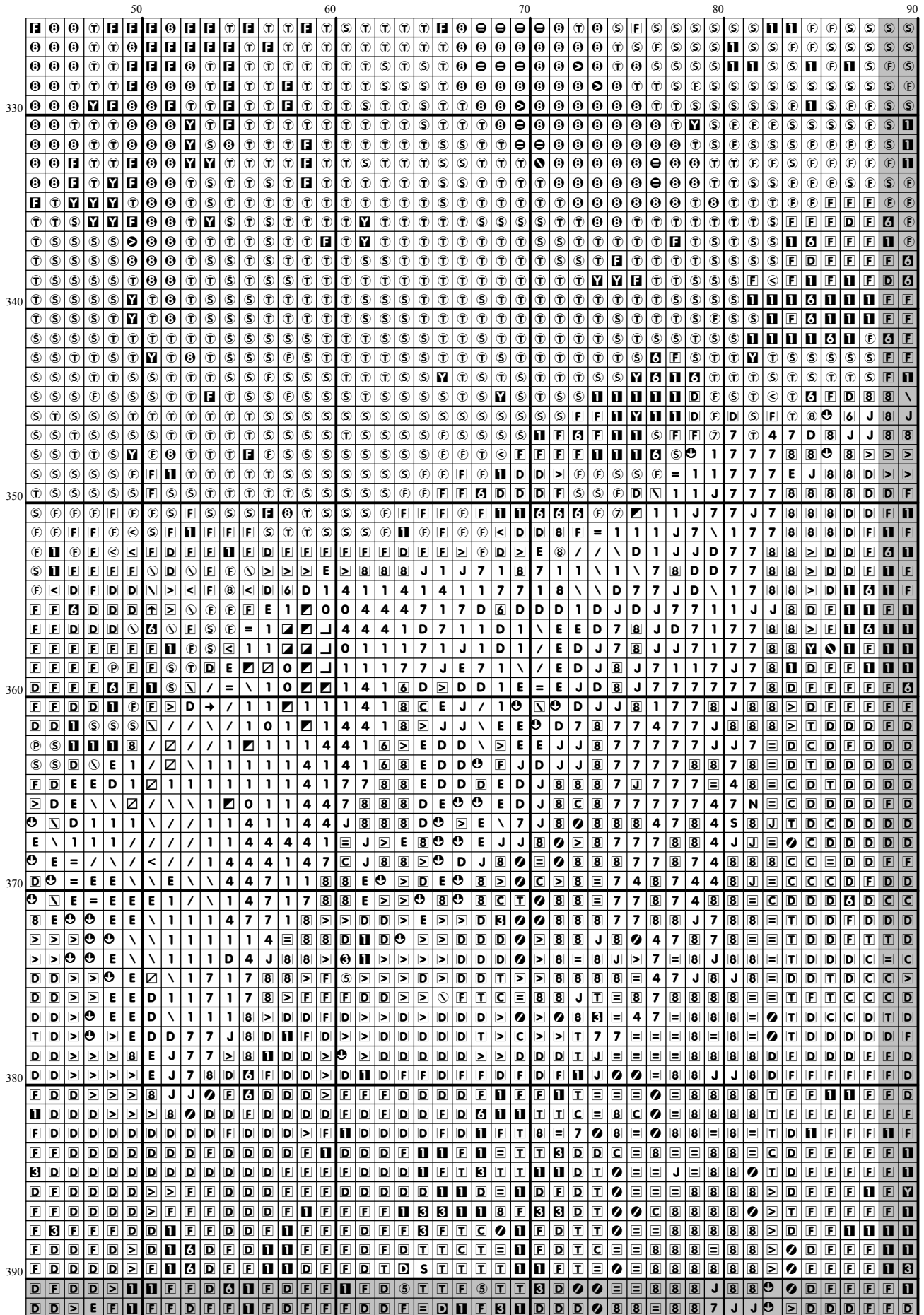




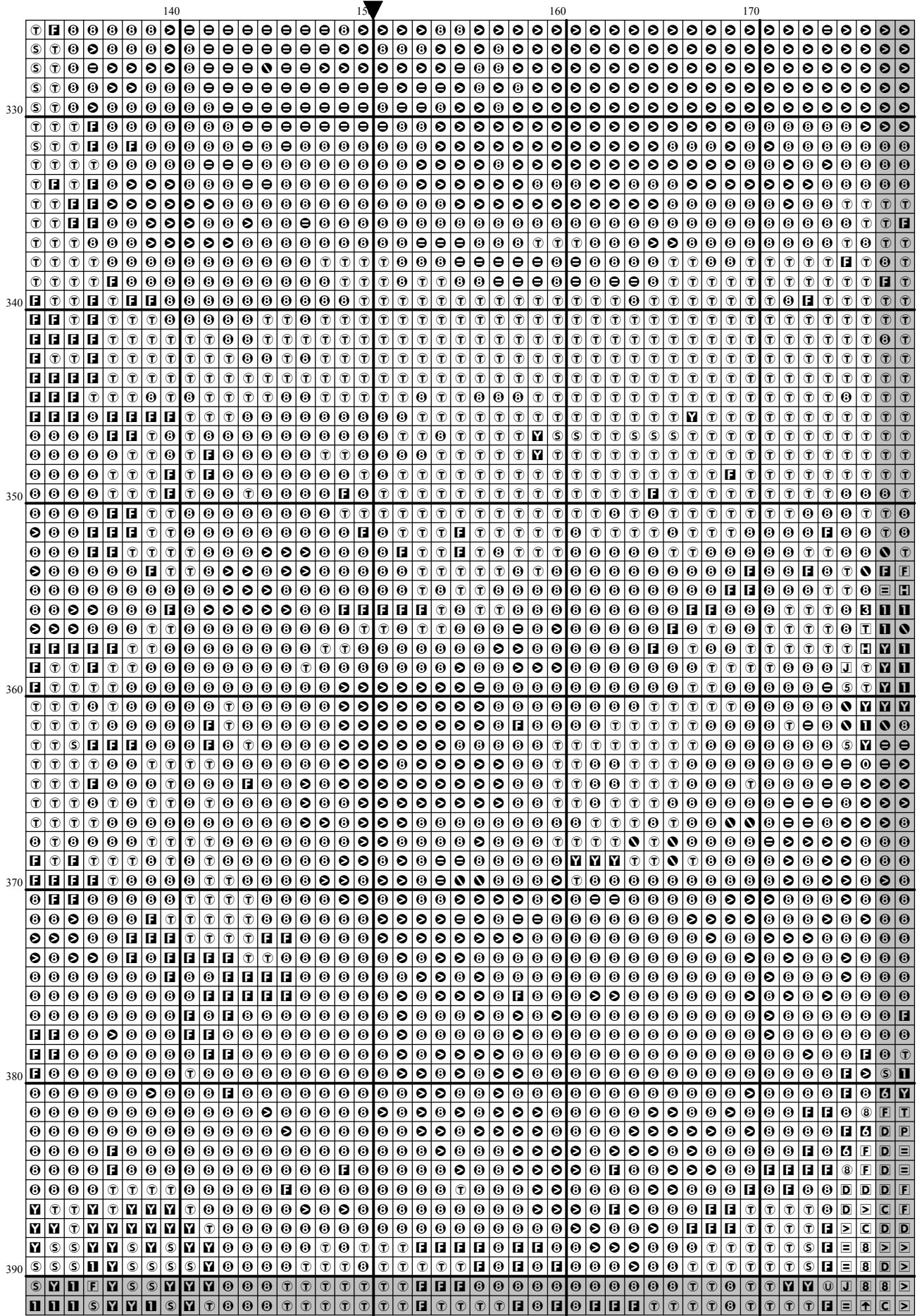


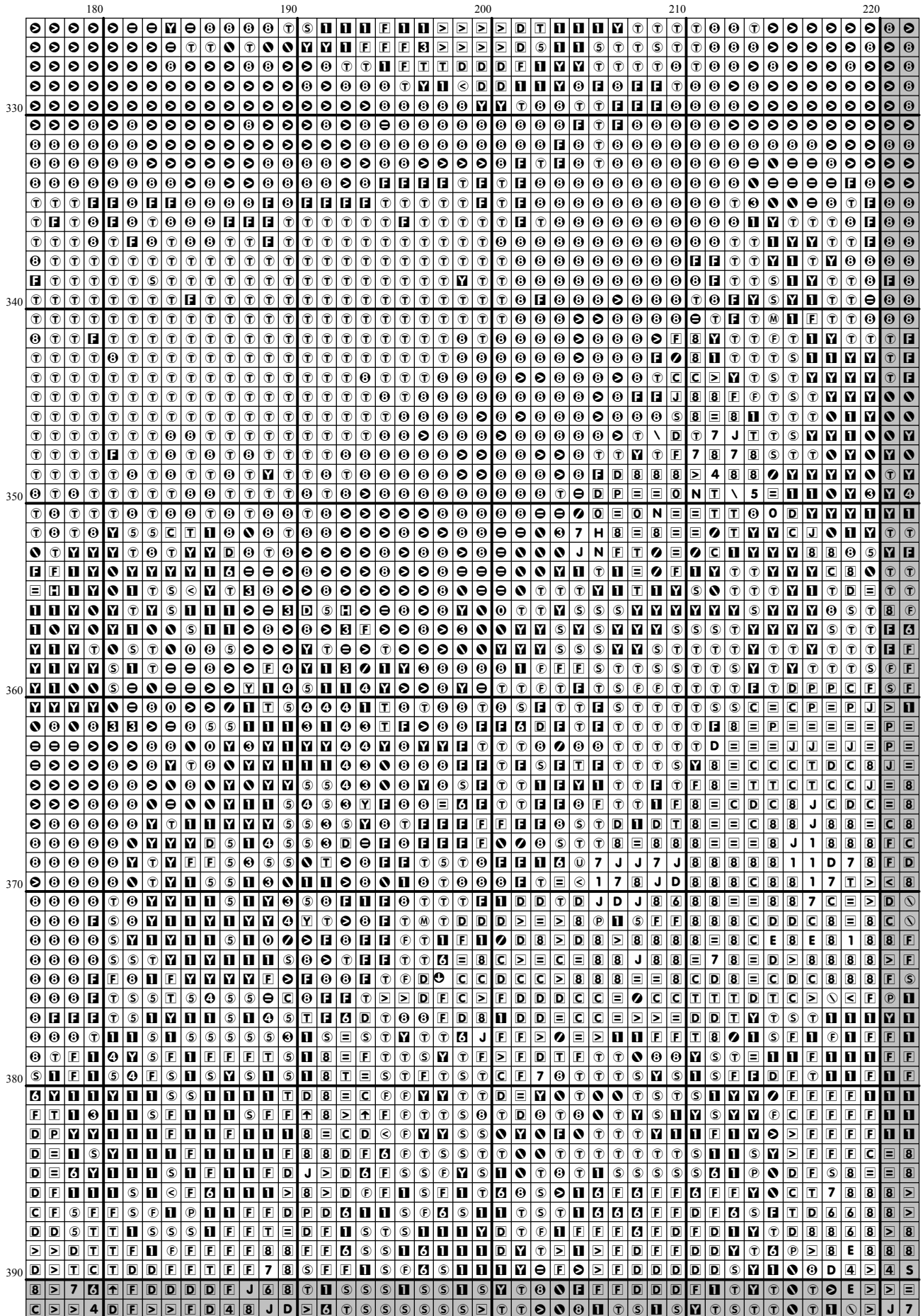
































		390	270	280	290	300
		400				
		410				
		420				
		430				
		440				
		450				

















## Instructions and Symbol Key for Design "ch269 Out of Reach"

**Fabric:** 14 count white Aida

**Stitches:** 300 x 461      **Size:** 21.43 x 32.93 inches or 54.43 x 83.64 cm

**Colours:** DMC

Use **2** strands of thread for cross stitch

Sym	No.	Colour Name	Sym	No.	Colour Name
⊗	156	Lavender	ⓐ	159	Light blue grey
⊕	161	Ash blue	ⓑ	166	Moss green
Ⓜ	168	Mouse grey	Ⓧ	169	Pewter grey
ⓕ	211	Pale violet	Ⓢ	221	Mars red
↙	301	Squirrel brown	■	310	Black
□	311	Dark polar blue	∩	315	Antique lilac
④	316	Heather lilac	Ⓜ	317	Steel grey
Ⓢ	318	Granite grey	Ⓣ	320	Fern green
Ⓜ	341	Hydrangea blue	②	352	Salmon
Ⓜ	356	Medium terracotta	ⓐ	369	Bamboo leaf green
/	370	Medium mustard	<	371	Green plains
Ⓢ	400	Brown	②	402	Pottery brown
Ⓢ	413	Iron grey	ⓑ	415	Chrome grey
1	420	Hazelnut	ⓕ	422	Light oak
Ⓢ	433	Chocolate brown	⊙	437	Camel
ⓑ	453	Turtledove grey	Ⓒ	469	Dark moss green
ⓕ	472	Bud green	∇	500	Ivy green
∇	501	Pond green	■	502	Blue green
∇	520	Dark fern green	Ⓜ	524	Light grey green
⊕	543	Shell beige	ⓕ	610	Dark golden brown
Ⓜ	611	Sisal brown	ⓕ	612	String brown
Ⓜ	613	Rope brown	↑	640	Green grey
=	642	Earth grey	ⓕ	644	Light green grey
Ⓜ	645	Dark steel grey	●	646	Platinum grey
Ⓜ	647	Rock grey	⑦	648	Peppergrey
Ⓜ	676	Savannah gold	7	680	Dark old gold
ⓕ	712	Cream	Ⓜ	729	Honey gold
Ⓒ	730	Khaki green	Ⓒ	732	Bronze green
ⓑ	733	Golden green	Ⓣ	738	Sahara cream
ⓑ	739	Dune cream	Ⓣ	762	Pearl grey
Ⓜ	778	Antique mauve	ⓐ	780	Chestnut tree brown
4	782	Wicker brown	ⓐ	822	Cotton cream
Ⓜ	823	Blueberry blue	Ⓜ	830	Green oak brown
Ⓜ	831	Green bronze	ⓑ	833	Brass
ⓕ	834	Light brass	→	840	Hare brown
⊕	841	Deer brown	Ⓜ	842	Beige rope
Ⓜ	869	Coffee brown	·	898	Teak brown
↘	919	Red copper	∧	920	Ochre copper
Ⓜ	926	Grey green	ⓕ	928	Light pearl grey
⊕	931	Blue grey	Ⓢ	932	Seagull blue
Ⓜ	934	Algae green	+	936	Oaktree moss green
●	939	Dark navy blue	Ⓜ	950	Beige
Ⓜ	976	Nutmeg brown	↑	3013	Resin green
Ⓜ	3021	Cliff grey	↓	3022	Elephant grey
Ⓜ	3023	Light platinum grey	Ⓜ	3033	Antique silver
↑	3041	Medium lilac	③	3042	Lilac
Ⓜ	3045	Coffee cream	ⓕ	3046	Rye beige
⑤	3047	Silver birch beige	Ⓜ	3051	Olive tree green

┌	3052	Silver green	Ⓢ	3072	Pale pearl grey
Ⓢ	3078	Pale yellow	—	3346	Hunter Green
▤	3354	Hydrangea pink	▣	3363	Herb green
◆	3371	Ebony	Ⓢ	3688	Pink mauve
▤	3689	Rose petal pink	W	3712	Blush pink
⊖	3743	Pale lilac	Ⓢ	3747	Pale candy blue
Ⓢ	3753	Moonlight blue	Ⓢ	3756	Cloud blue
X	3768	Storm grey	8	3772	Rosy tan
▤	3774	Pale desert sand	P	3776	Dark nutmeg brown
Ⓢ	3778	Light terracotta	▣	3779	Pale terracotta
⊖	3782	Gingerbread brown	▣	3790	Cappuccino brown
○	3799	Anthracite grey	Ⓢ	3815	Eucalyptus Green
↙	3817	Polar tree green	Ⓢ	3821	Straw yellow
5	3826	Golden brown	①	3827	Beech brown
J	3828	Oaktree brown	Y	3833	Light strawberry
S	3852	Mustard yellow	♥	3857	Dark red wine
▣	3858	Medium red wine	Ⓢ	3860	Taupe mauve
9	3861	Light taupe	\	3863	Otter brown
Ⓢ	3865	Winter white	▣	3866	Garlic cream
Ⓢ	ECRUT	ECRUT			

This chart has been designed and printed with our best intentions of being without mistakes. However, the possibility of human error, printing mistakes or the variation of individual stitching does exist, and we regret that we cannot be responsible for this.

Note: The shaded blocks on the chart represent overlapping stitches.  
 Copyright © Classic Cross Stitch 2004 All rights reserved.