

XUMEDA

По картине

"На берегу"

Finished Design Size 290w X 376h Stitches

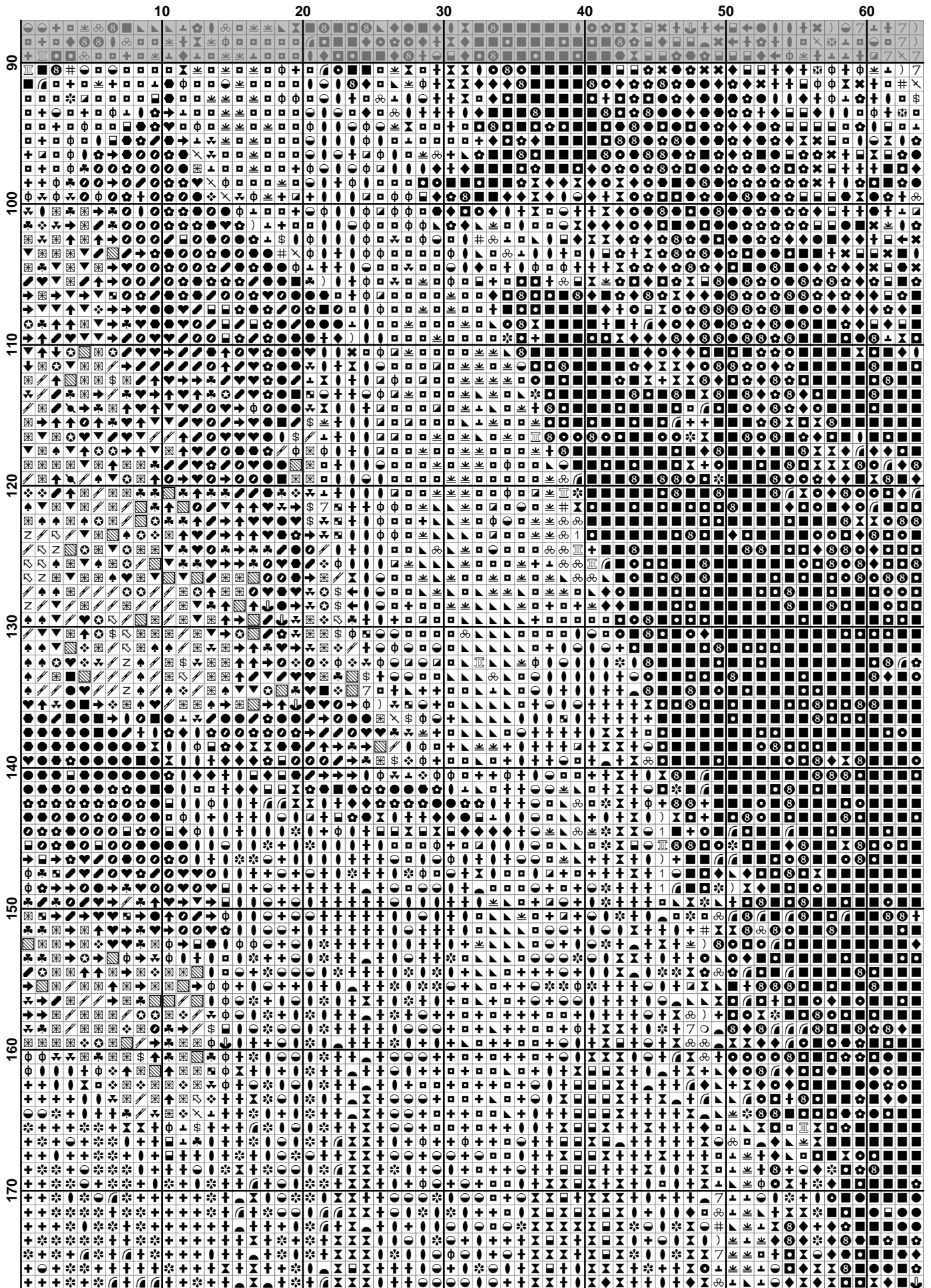


2015 г.

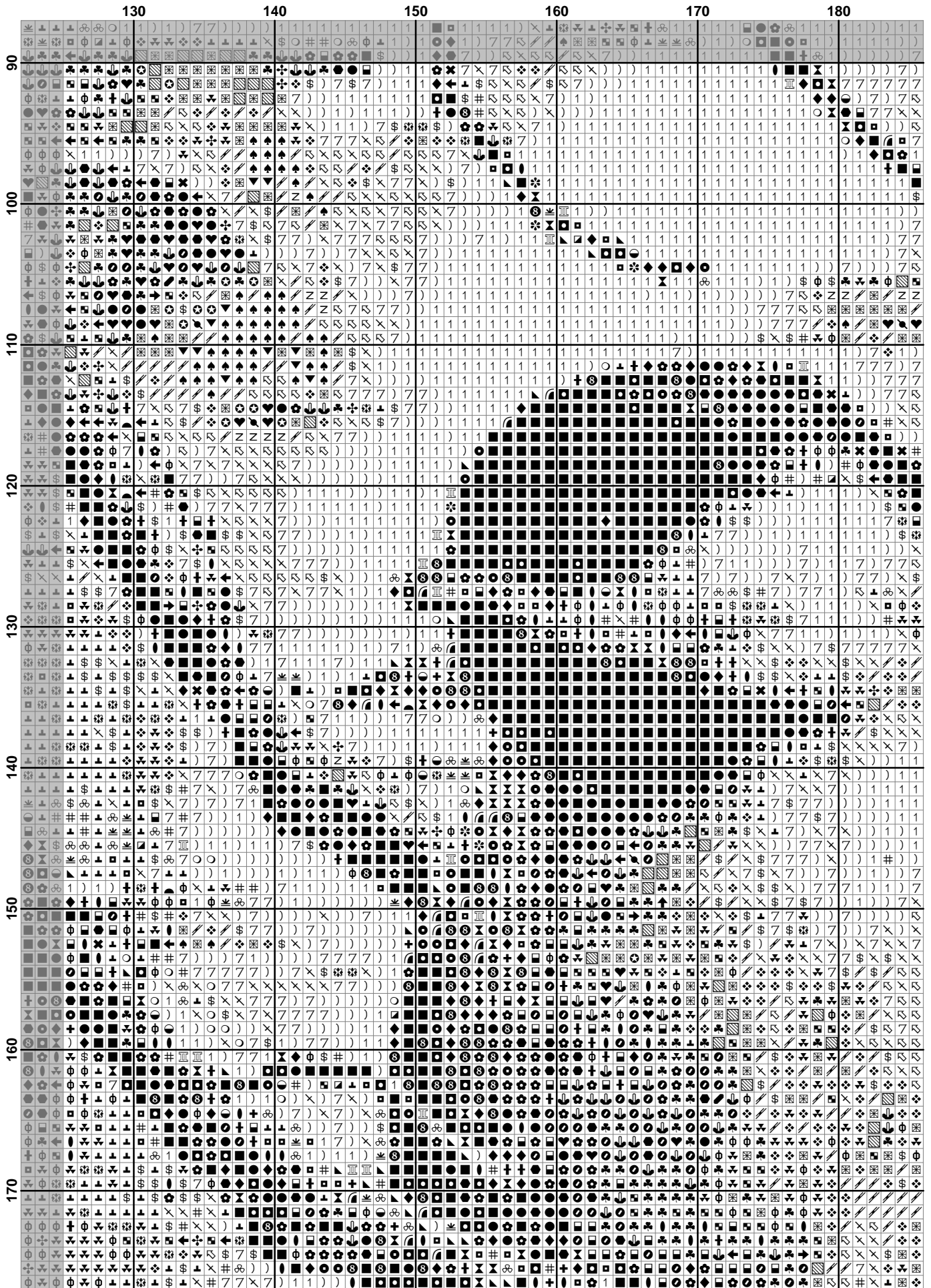
	10	20	30	40	50	60
7	#	8	8	8	8	8
8	8	8	8	8	8	8
9	8	8	8	8	8	8
10	8	8	8	8	8	8
11	8	8	8	8	8	8
12	8	8	8	8	8	8
13	8	8	8	8	8	8
14	8	8	8	8	8	8
15	8	8	8	8	8	8
16	8	8	8	8	8	8
17	8	8	8	8	8	8
18	8	8	8	8	8	8
19	8	8	8	8	8	8
20	8	8	8	8	8	8
21	8	8	8	8	8	8
22	8	8	8	8	8	8
23	8	8	8	8	8	8
24	8	8	8	8	8	8
25	8	8	8	8	8	8
26	8	8	8	8	8	8
27	8	8	8	8	8	8
28	8	8	8	8	8	8
29	8	8	8	8	8	8
30	8	8	8	8	8	8
31	8	8	8	8	8	8
32	8	8	8	8	8	8
33	8	8	8	8	8	8
34	8	8	8	8	8	8
35	8	8	8	8	8	8
36	8	8	8	8	8	8
37	8	8	8	8	8	8
38	8	8	8	8	8	8
39	8	8	8	8	8	8
40	8	8	8	8	8	8
41	8	8	8	8	8	8
42	8	8	8	8	8	8
43	8	8	8	8	8	8
44	8	8	8	8	8	8
45	8	8	8	8	8	8
46	8	8	8	8	8	8
47	8	8	8	8	8	8
48	8	8	8	8	8	8
49	8	8	8	8	8	8
50	8	8	8	8	8	8
51	8	8	8	8	8	8
52	8	8	8	8	8	8
53	8	8	8	8	8	8
54	8	8	8	8	8	8
55	8	8	8	8	8	8
56	8	8	8	8	8	8
57	8	8	8	8	8	8
58	8	8	8	8	8	8
59	8	8	8	8	8	8
60	8	8	8	8	8	8
61	8	8	8	8	8	8
62	8	8	8	8	8	8
63	8	8	8	8	8	8
64	8	8	8	8	8	8
65	8	8	8	8	8	8
66	8	8	8	8	8	8
67	8	8	8	8	8	8
68	8	8	8	8	8	8
69	8	8	8	8	8	8
70	8	8	8	8	8	8
71	8	8	8	8	8	8
72	8	8	8	8	8	8
73	8	8	8	8	8	8
74	8	8	8	8	8	8
75	8	8	8	8	8	8
76	8	8	8	8	8	8
77	8	8	8	8	8	8
78	8	8	8	8	8	8
79	8	8	8	8	8	8
80	8	8	8	8	8	8
81	8	8	8	8	8	8
82	8	8	8	8	8	8
83	8	8	8	8	8	8
84	8	8	8	8	8	8
85	8	8	8	8	8	8
86	8	8	8	8	8	8
87	8	8	8	8	8	8
88	8	8	8	8	8	8
89	8	8	8	8	8	8
90	8	8	8	8	8	8

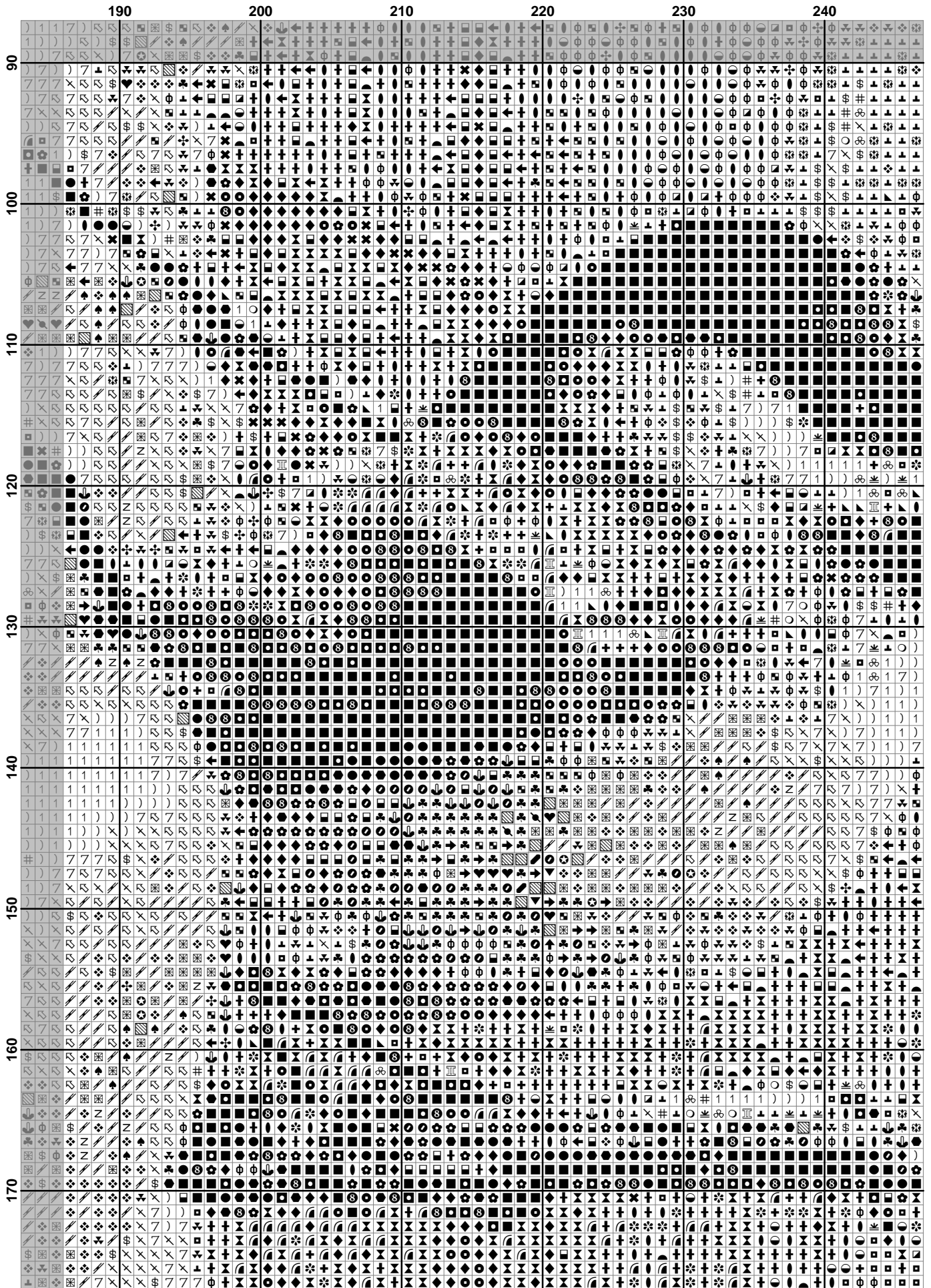
	70	80	90	100	110	120
10
20
30
40
50
60
70
80
90

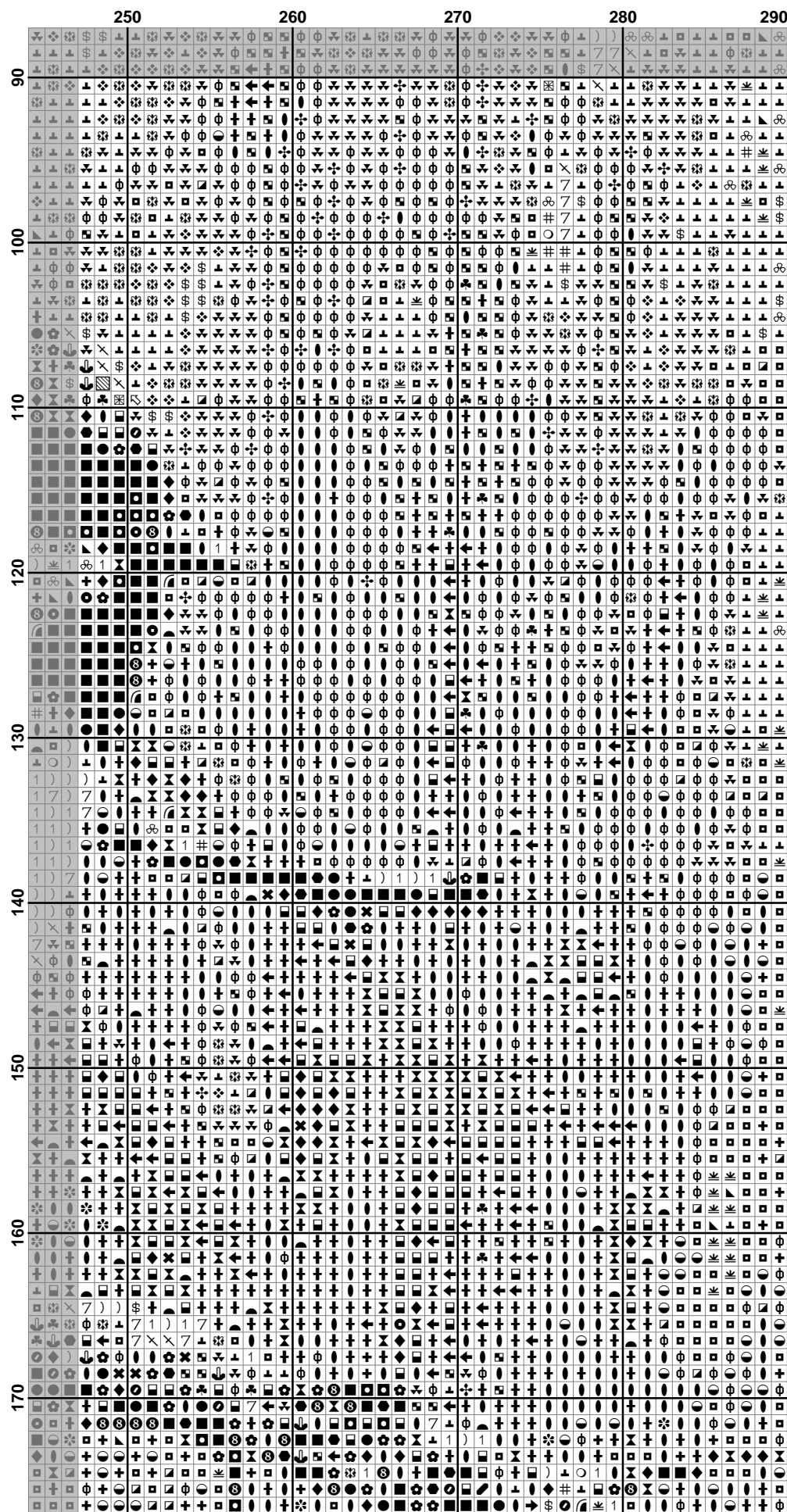
	190	200	210	220	230	240
10
20
30
40
50
60
70
80
90

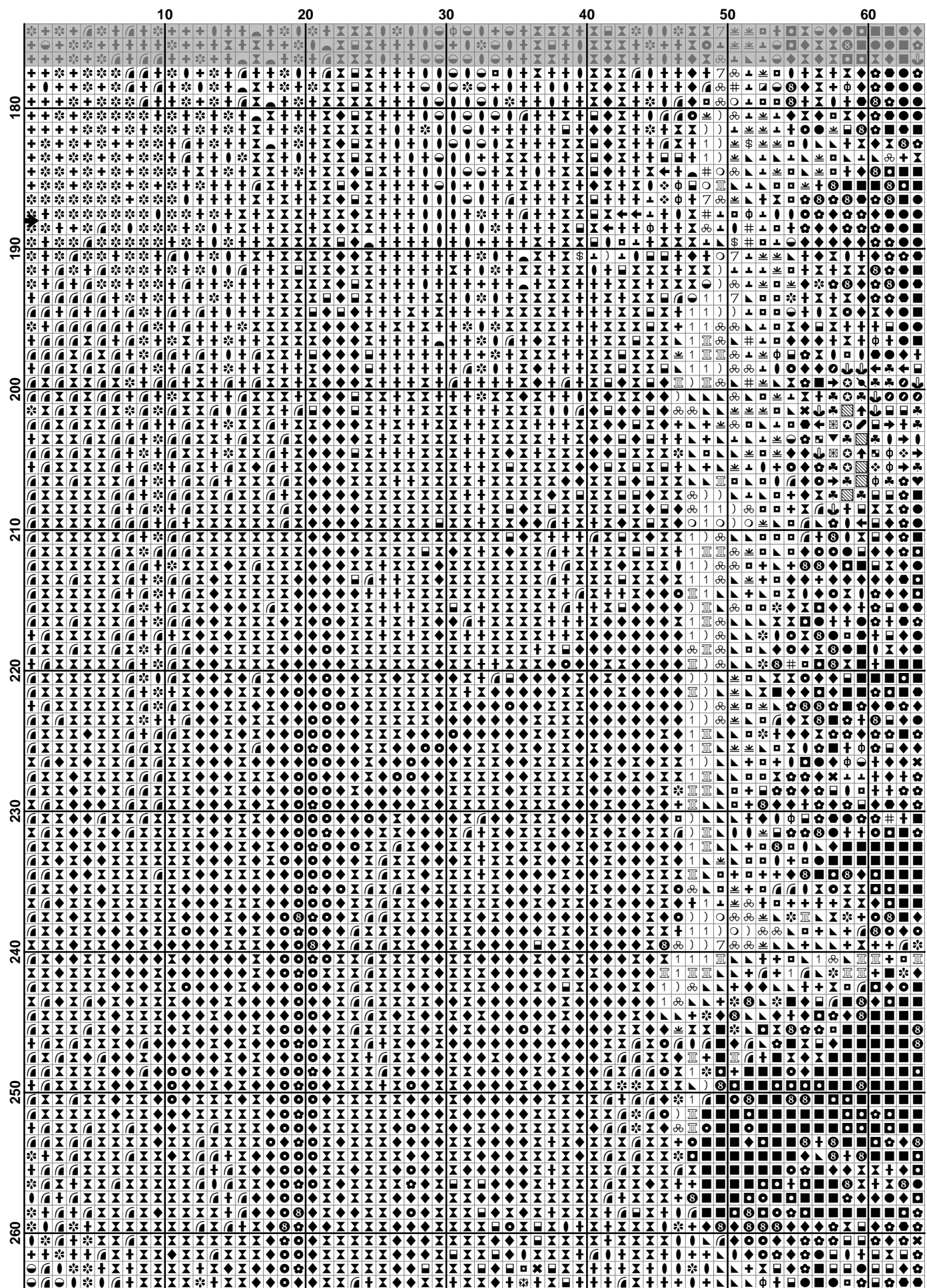


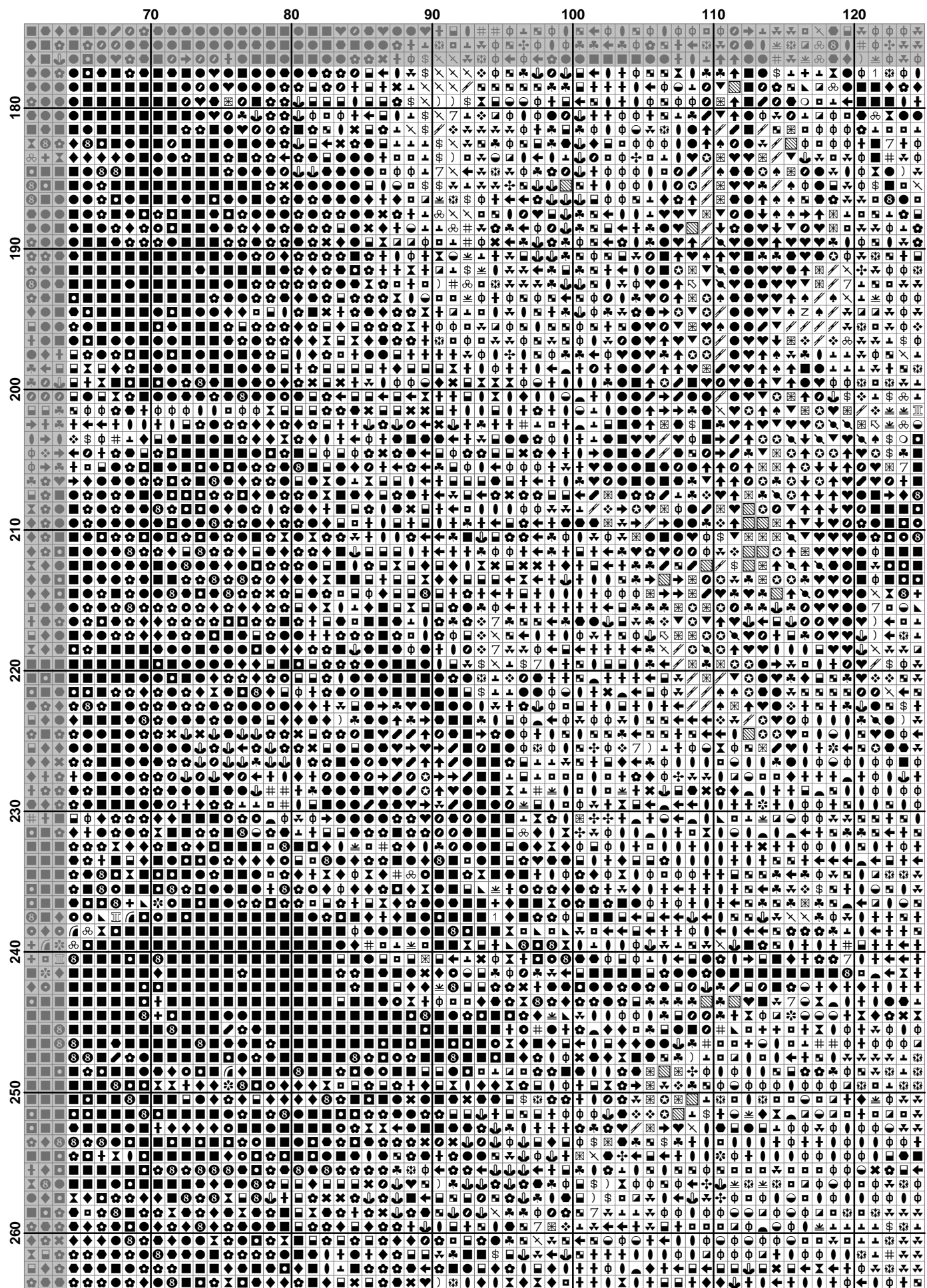


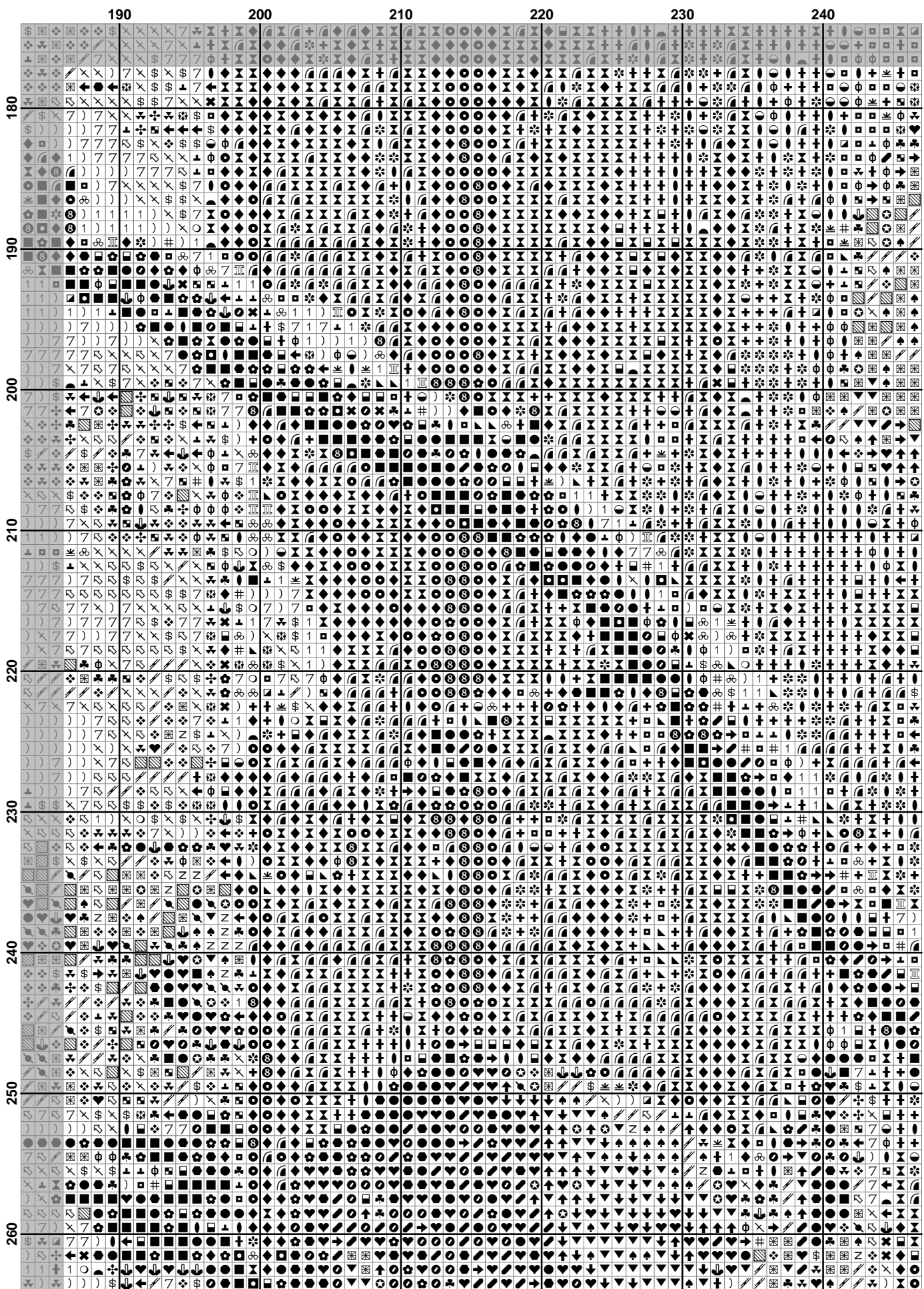


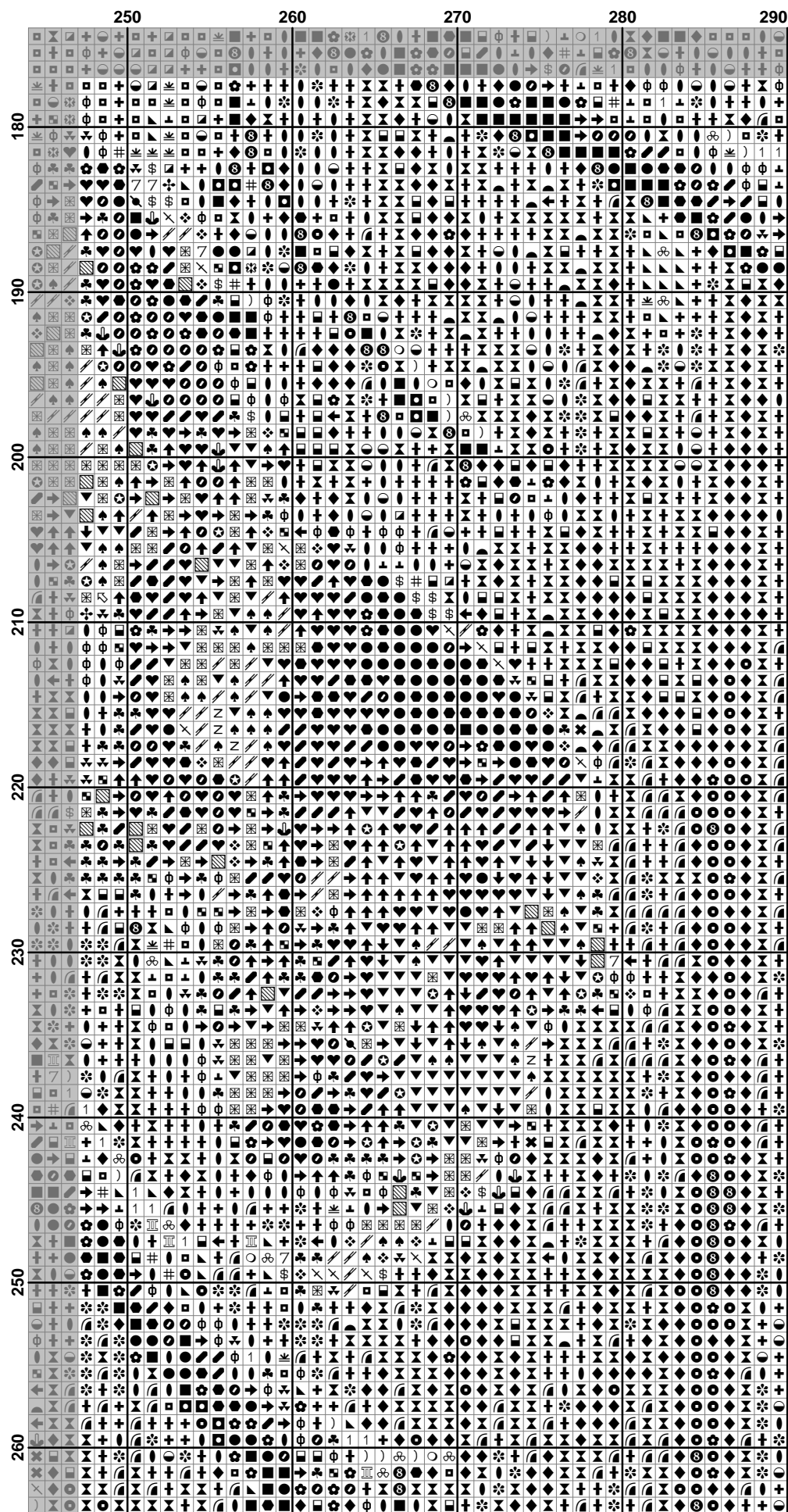






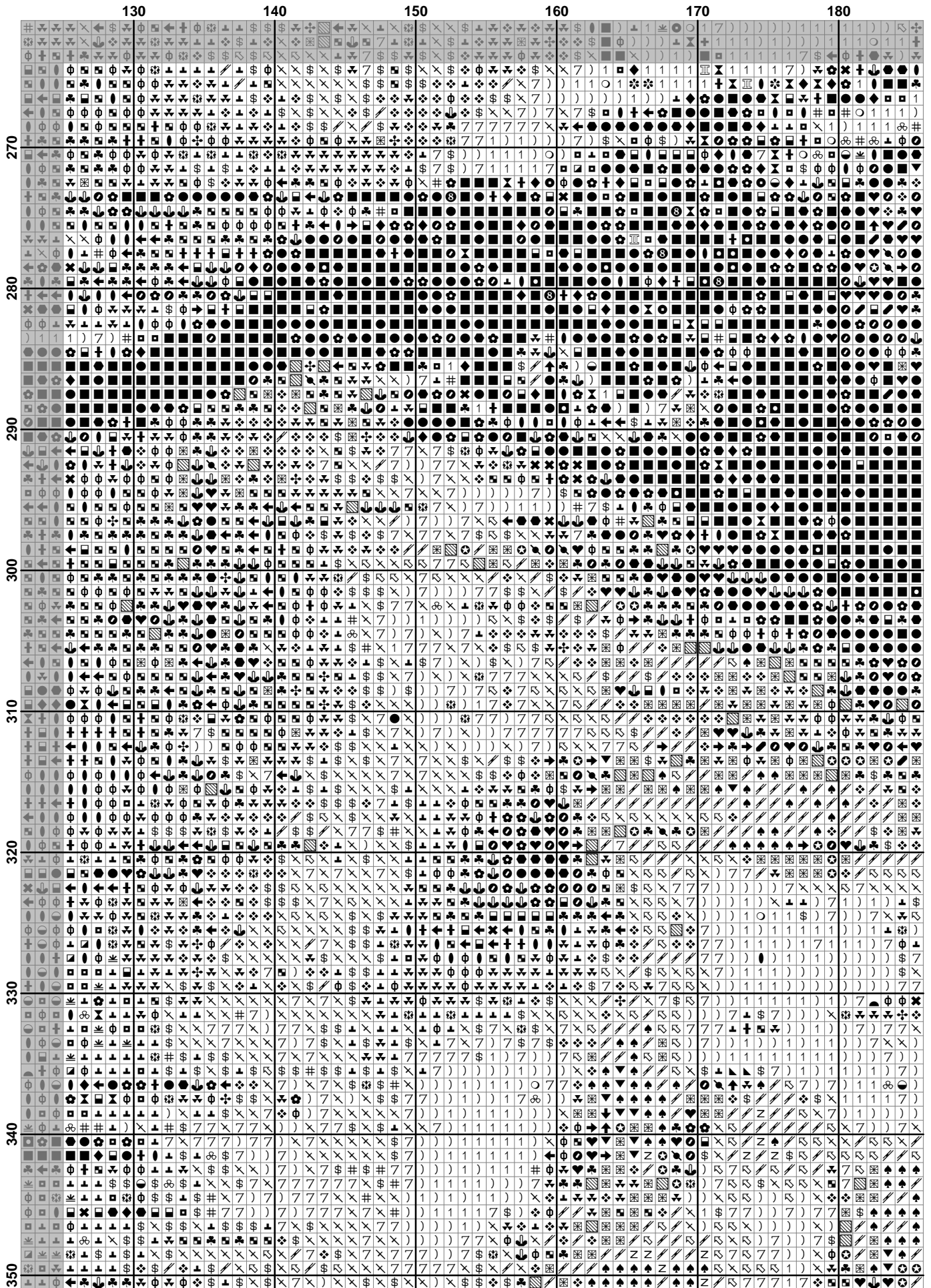


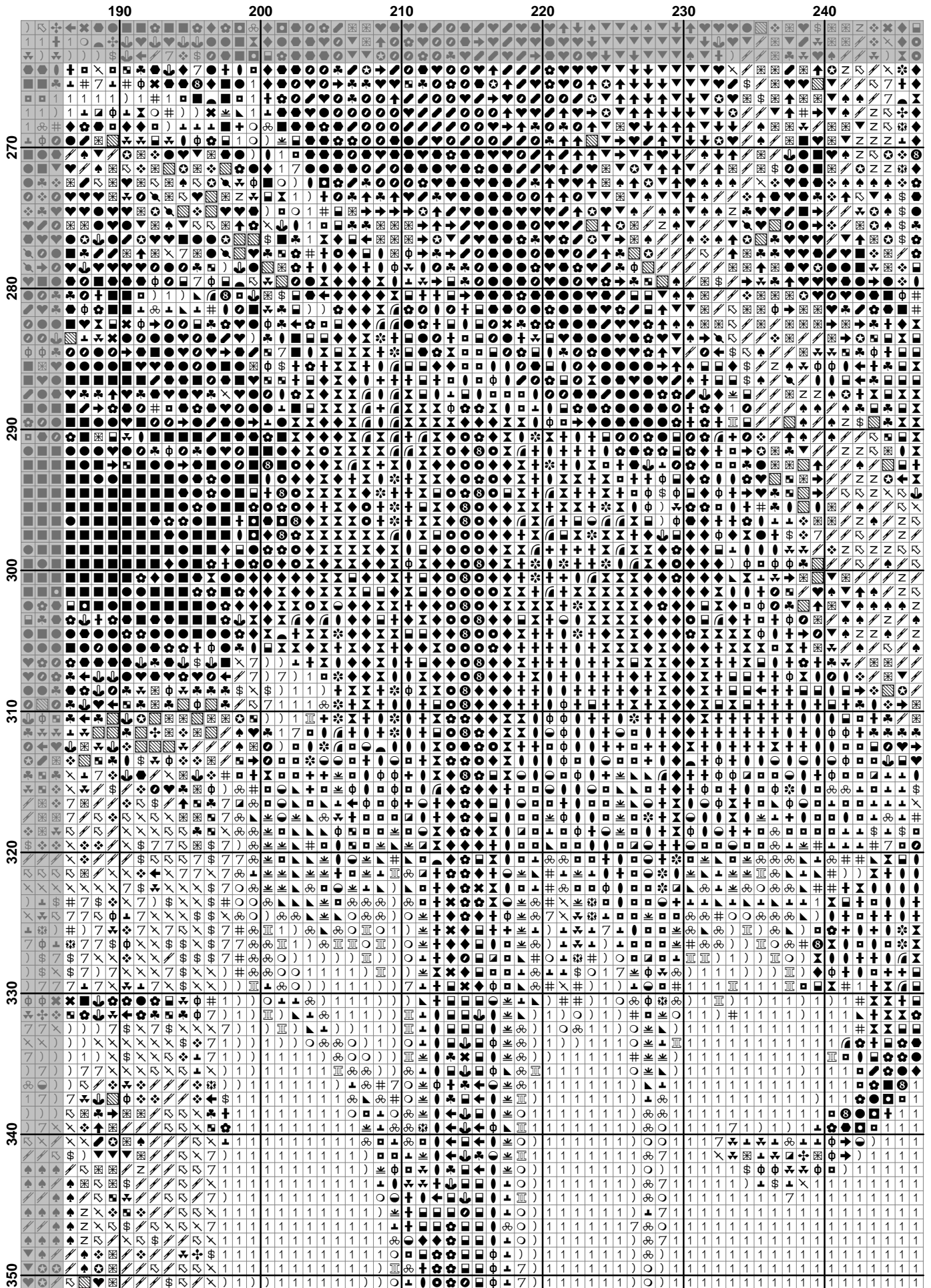




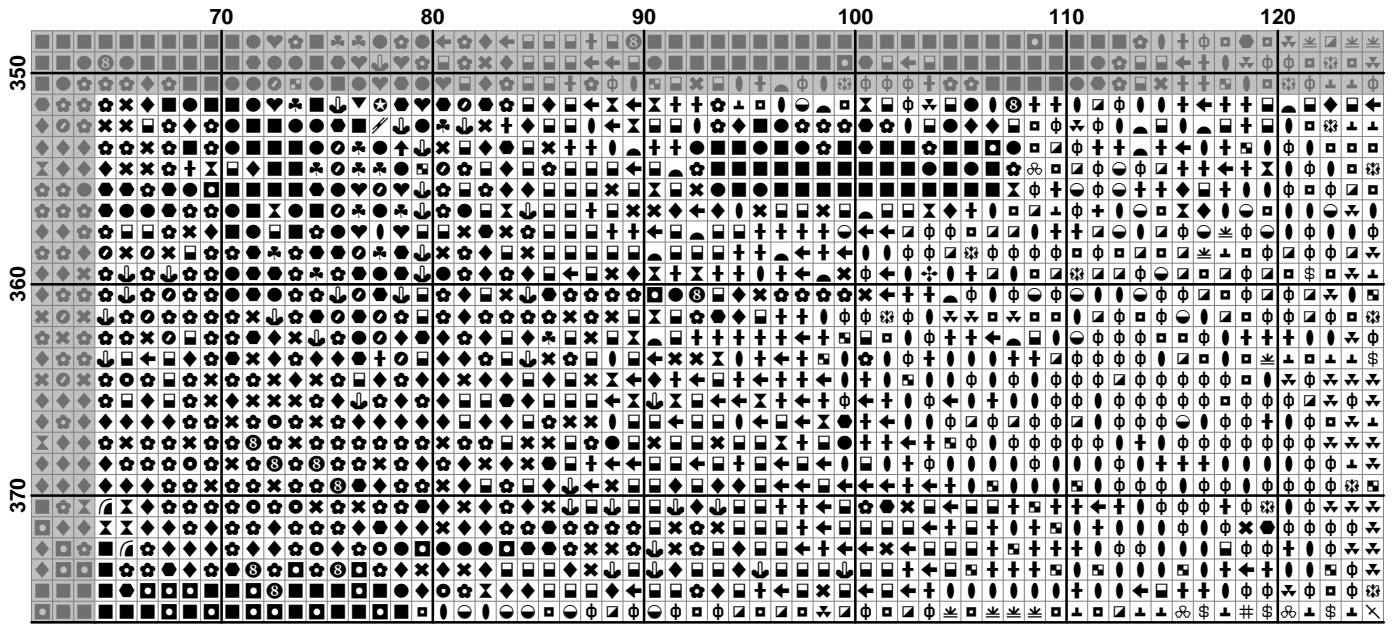
	10	20	30	40	50	60
270	+	+	+	+	+	+
280	+	+	+	+	+	+
290	+	+	+	+	+	+
300	+	+	+	+	+	+
310	+	+	+	+	+	+
320	+	+	+	+	+	+
330	+	+	+	+	+	+
340	+	+	+	+	+	+
350	+	+	+	+	+	+
















Pattern Name: На березе
Designed By: Химера
Fabric: Aida 18, White
 290w X 376h Stitches
Size(s): 18 Count, 40.92w X 53.06h cm
 16 Count, 46.04w X 59.69h cm
 14 Count, 52.61w X 68.22h cm
 25 Count, 29.46w X 38.20h cm

Floss Used for Full Stitches:

Symbol	Strands	Type	Number	Color
	2	DMC	169	Pewter-LT
	2	DMC	225	Shell Pink-UL VY LT
	2	DMC	310	Black
	2	DMC	318	Steel Gray-LT
	2	DMC	372	Mustard-LT
	2	DMC	413	Pewter Gray-DK
	2	DMC	414	Steel Gray-DK
	2	DMC	415	Pearl Gray
	2	DMC	435	Brown-VY LT
	2	DMC	436	Tan
	2	DMC	451	Shell Gray-DK
	2	DMC	452	Shell Gray-MD
	2	DMC	524	Fern Green-VY LT
	2	DMC	612	Drab Brown-LT
	2	DMC	613	Drab Brown-VY LT
	2	DMC	646	Beaver Gray-DK
	2	DMC	647	Beaver Gray-MD
	2	DMC	648	Beaver Gray-LT
	2	DMC	738	Tan-VY LT
	2	DMC	739	Tan-UL VY LT
	2	DMC	745	Yellow-LT Pale
	2	DMC	762	Pearl Gray-VY LT
	2	DMC	779	Cocoa-DK
	2	DMC	838	Beige Brown-VY DK
	2	DMC	840	Beige Brown-MD
	2	DMC	842	Beige Brown-VY LT
	2	DMC	921	Copper
	2	DMC	938	Coffee Brown-UL DK
	2	DMC	951	Tawny-LT
	2	DMC	975	Golden Brown-DK
	2	DMC	3072	Beaver Gray-VY LT
	2	DMC	3721	Shell Pink-DK
	2	DMC	3722	Shell Pink-MD
	2	DMC	3770	Tawny-VY LT
	2	DMC	3772	Desert Sand-VY DK
	2	DMC	3776	Mahogany-LT
	2	DMC	3787	Brown Gray-DK
	2	DMC	3799	Pewter Gray-VY DK
	2	DMC	3822	Straw-LT
	2	DMC	3828	Hazelnut Brown
	2	DMC	3829	Old Gold-VY DK
	2	DMC	3830	Terra Cotta-MD
	2	DMC	3856	Mahogany-UL VY LT
	2	DMC	3858	Rosewood-MD
	2	DMC	3860	Cocoa
	2	DMC	3861	Cocoa-LT
	2	DMC	3862	Mocha Beige-DK
	2	DMC	3864	Mocha Beige-LT
	2	DMC	3865	Winter White
	2	DMC	3866	Mocha Brown-UL VY LT
	1	DMC	3799	Pewter Gray-VY DK
	1	DMC	310	Black

Symbol	Strands	Type	Number	Color
)	1	DMC 3770	Tawny-VY LT
		1	DMC 3865	Winter White
	φ	1	DMC 3861	Cocoa-LT
		1	DMC 3864	Mocha Beige-LT
	⌘	1	DMC 414	Steel Gray-DK
		1	DMC 3860	Cocoa
	◆	1	DMC 413	Pewter Gray-DK
		1	DMC 3860	Cocoa
	♠	1	DMC 3776	Mahogany-LT
		1	DMC 3822	Straw-LT

