

XUMEDA

По картине художника

Jean-Baptiste Monge

H470 "Рождественский старик"

Finished Design Size 300w X 415h Stitches

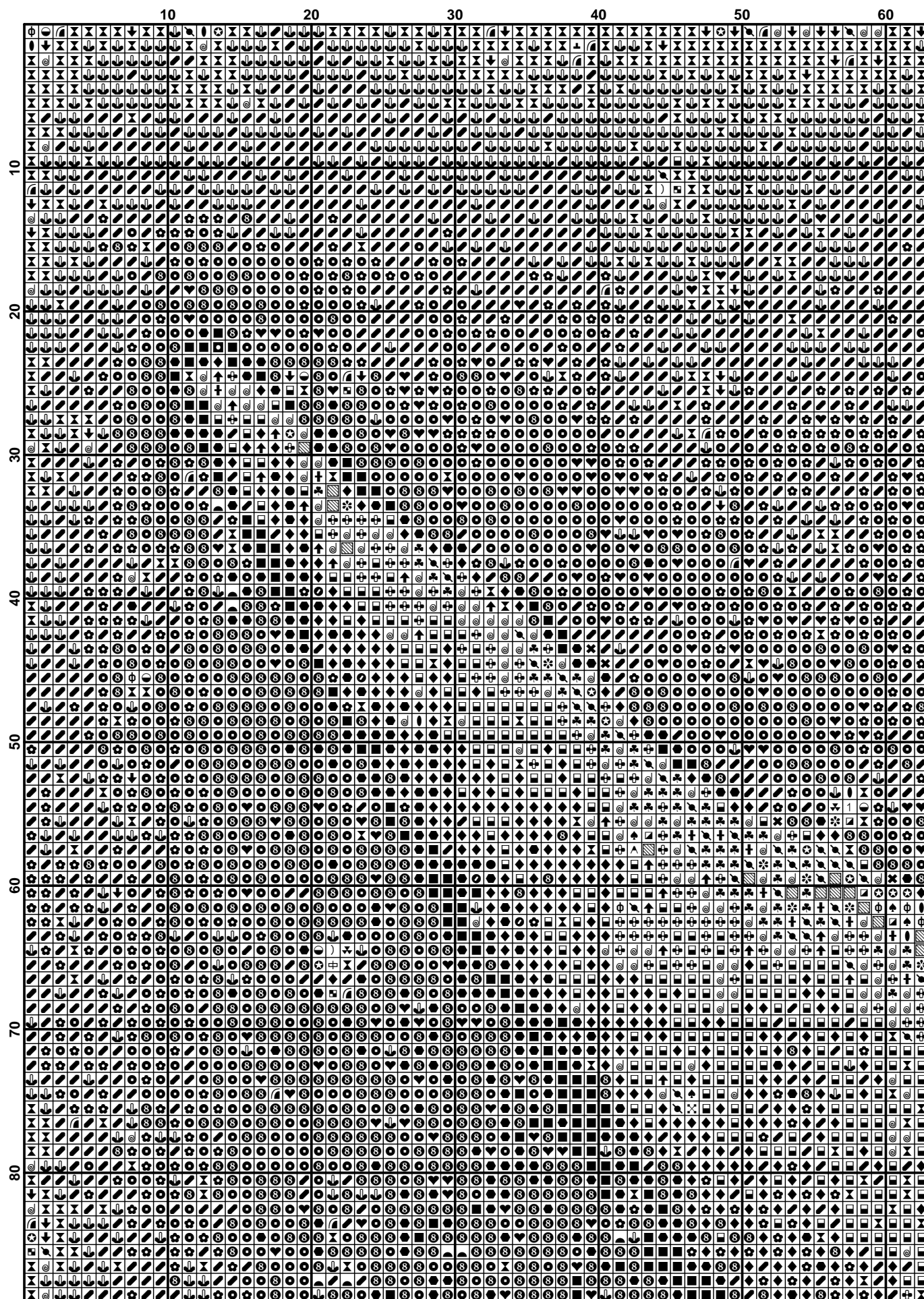


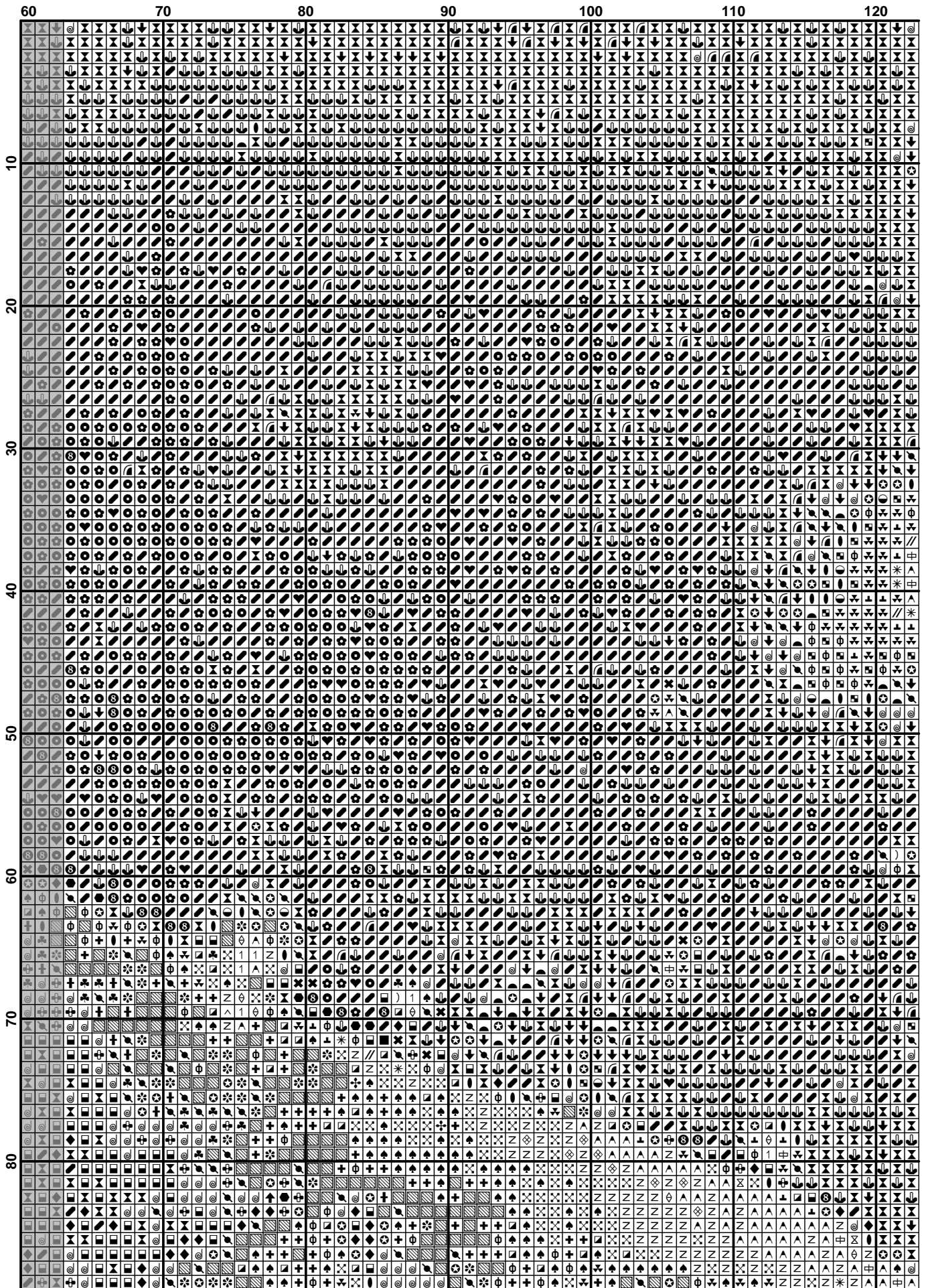
2015 г.

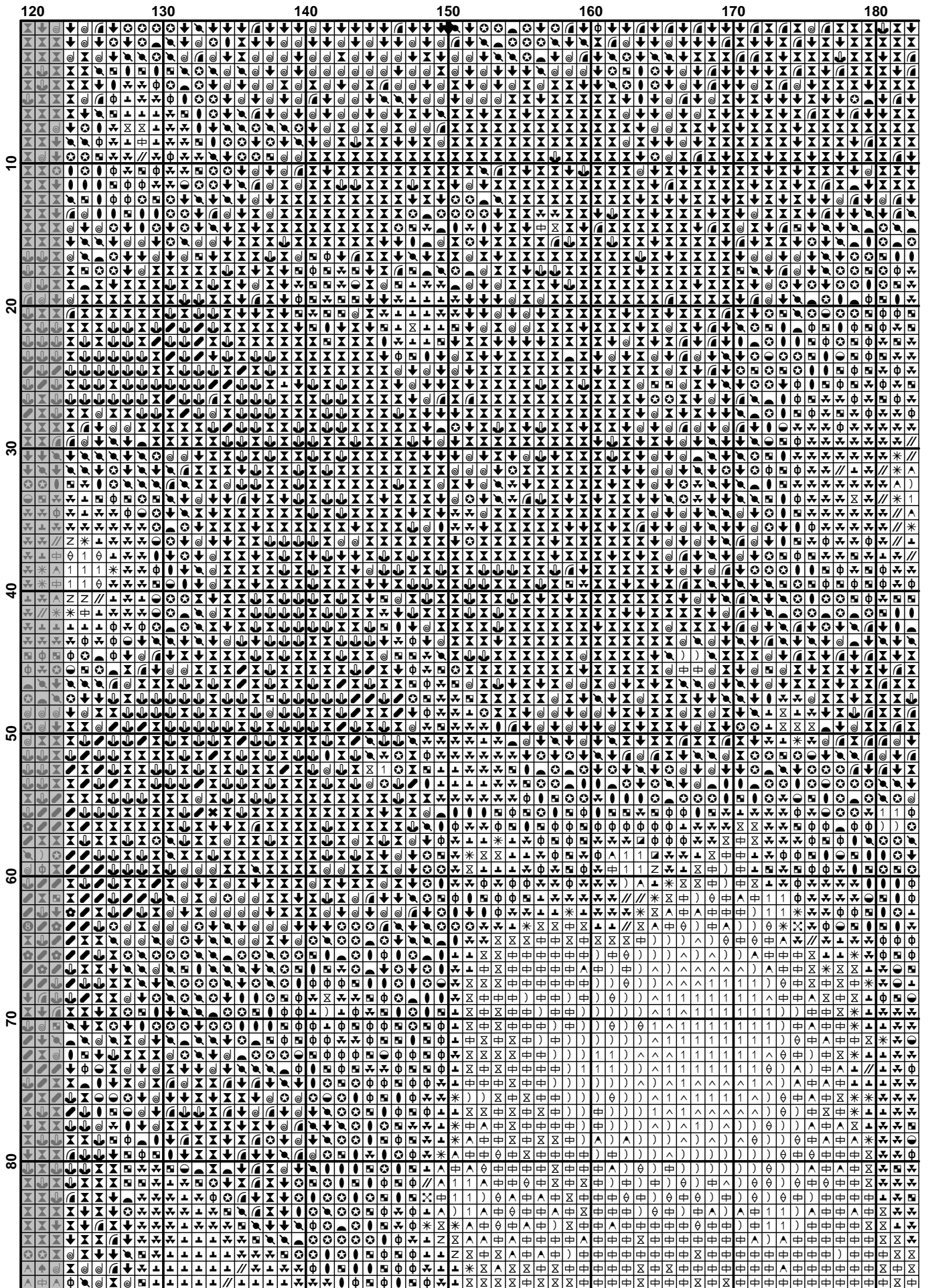
Колористка цветов:

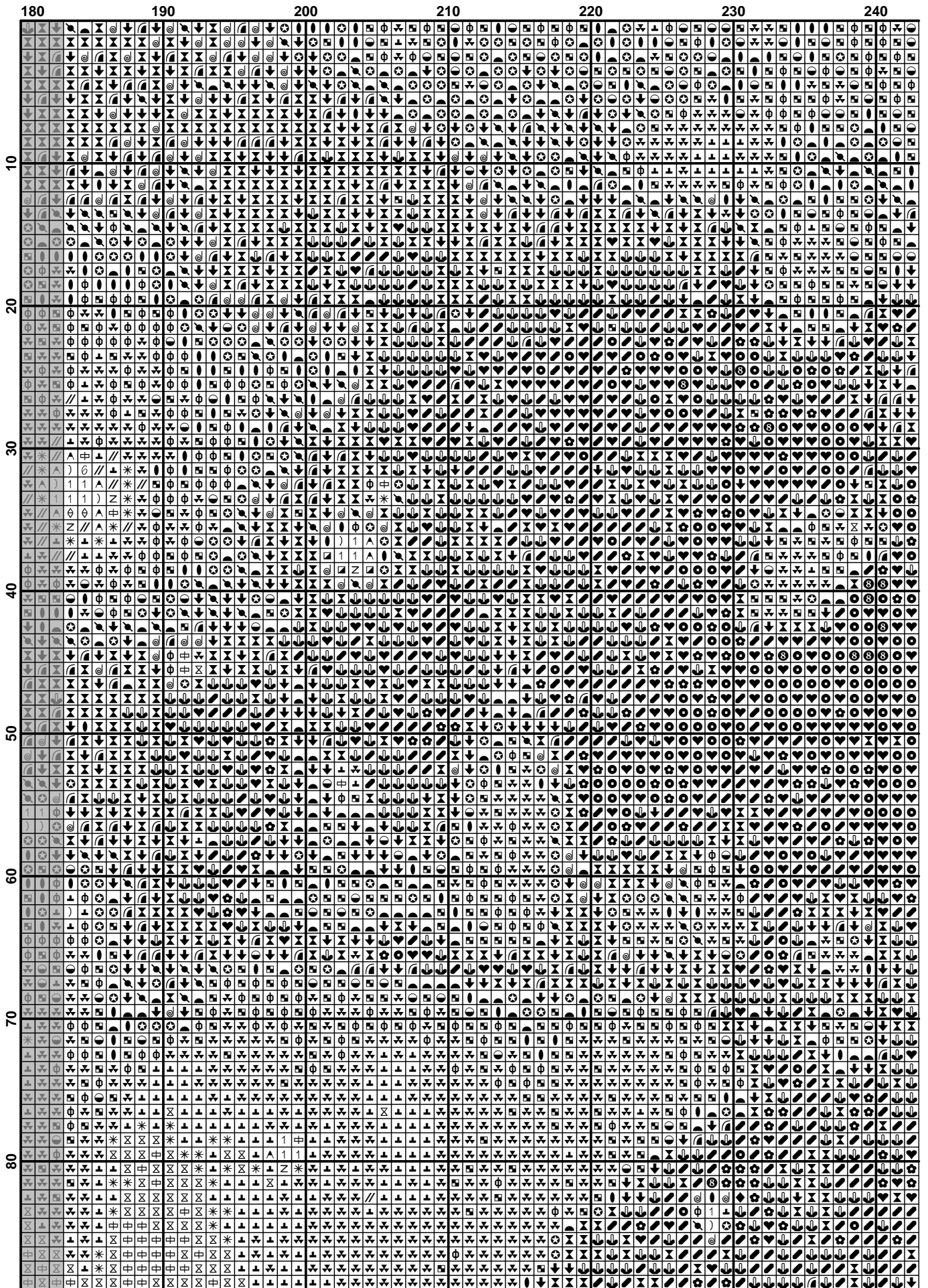
Чистых: 43 цвета

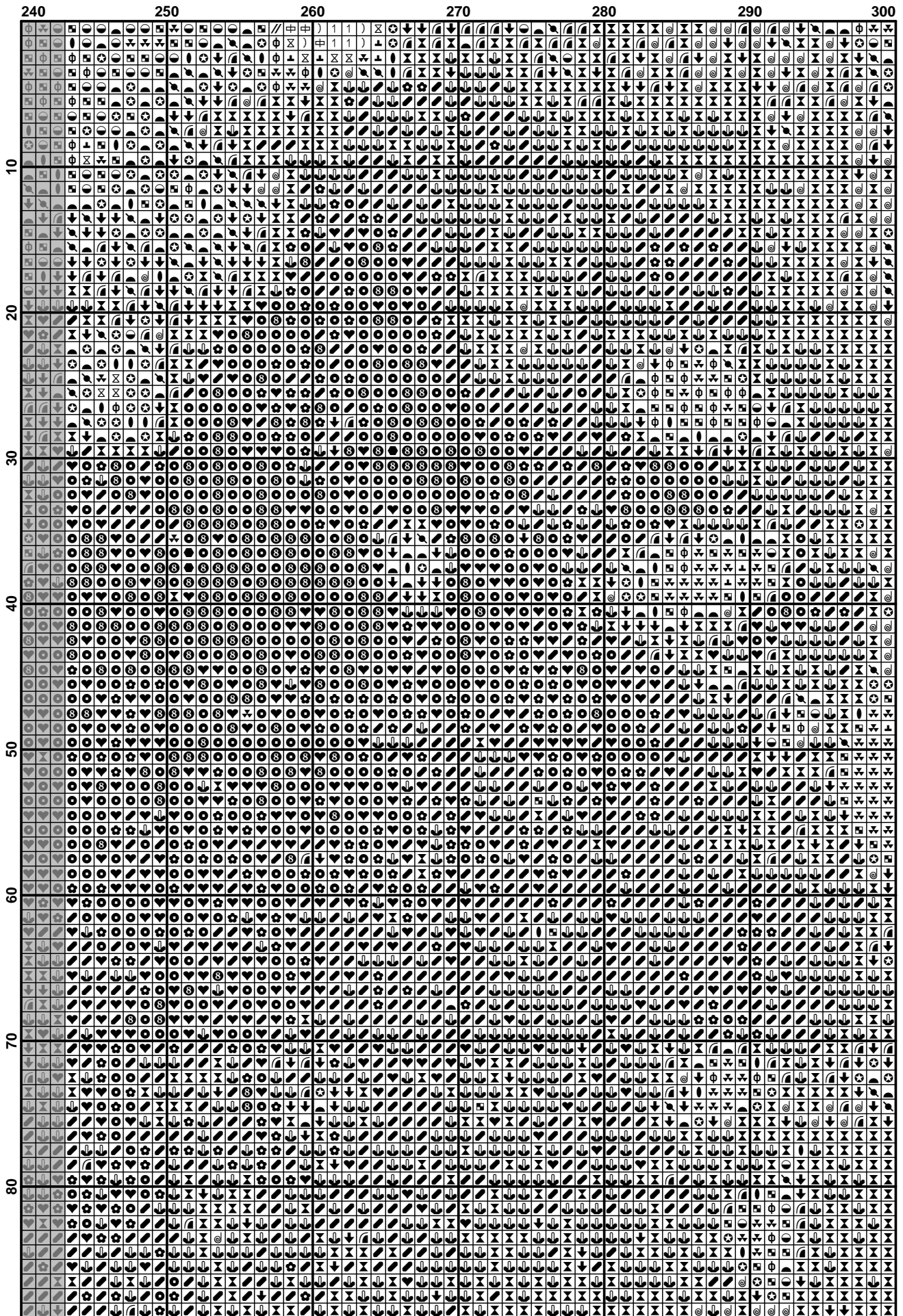
Смешанных: 11 цветов



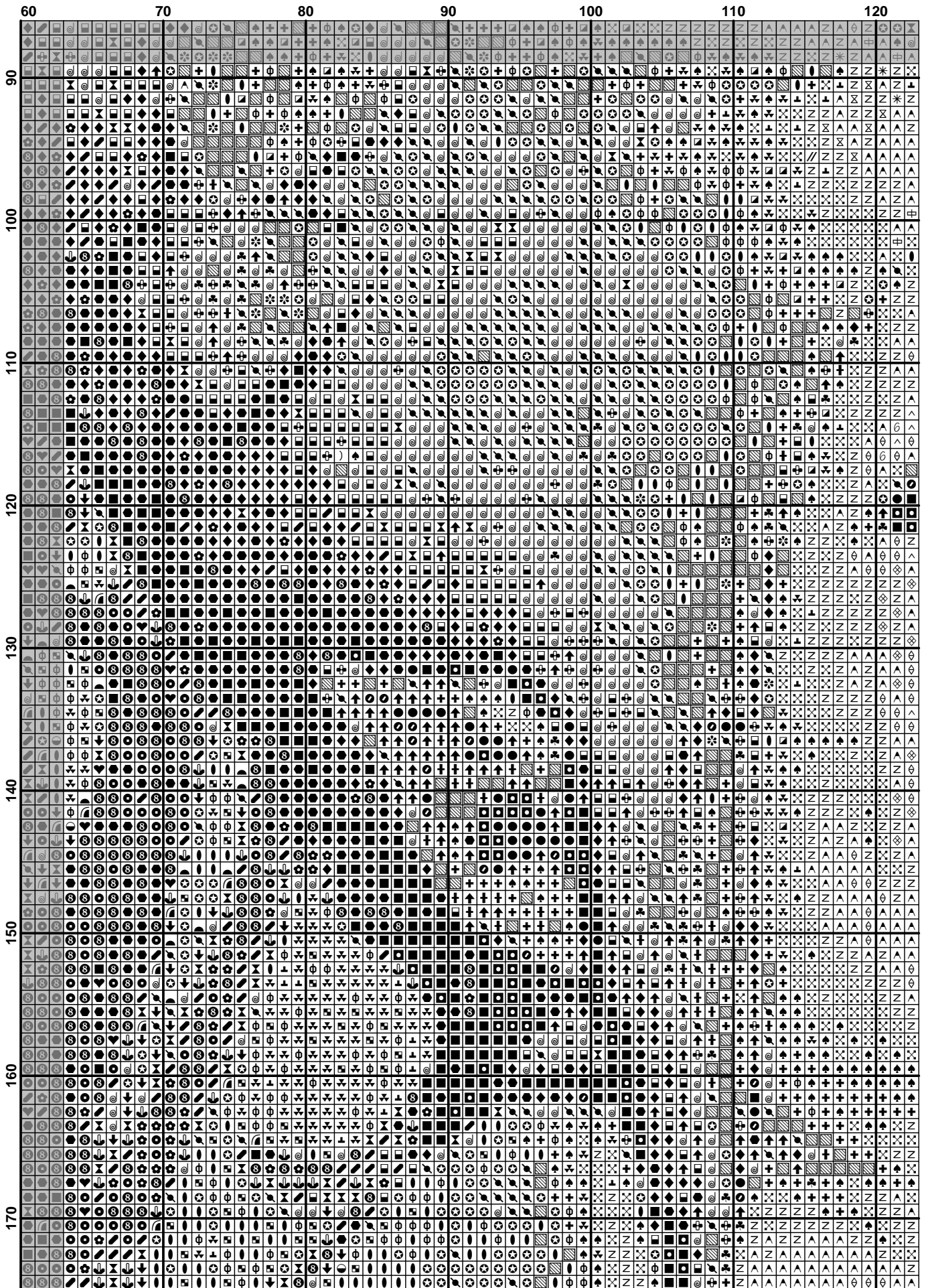


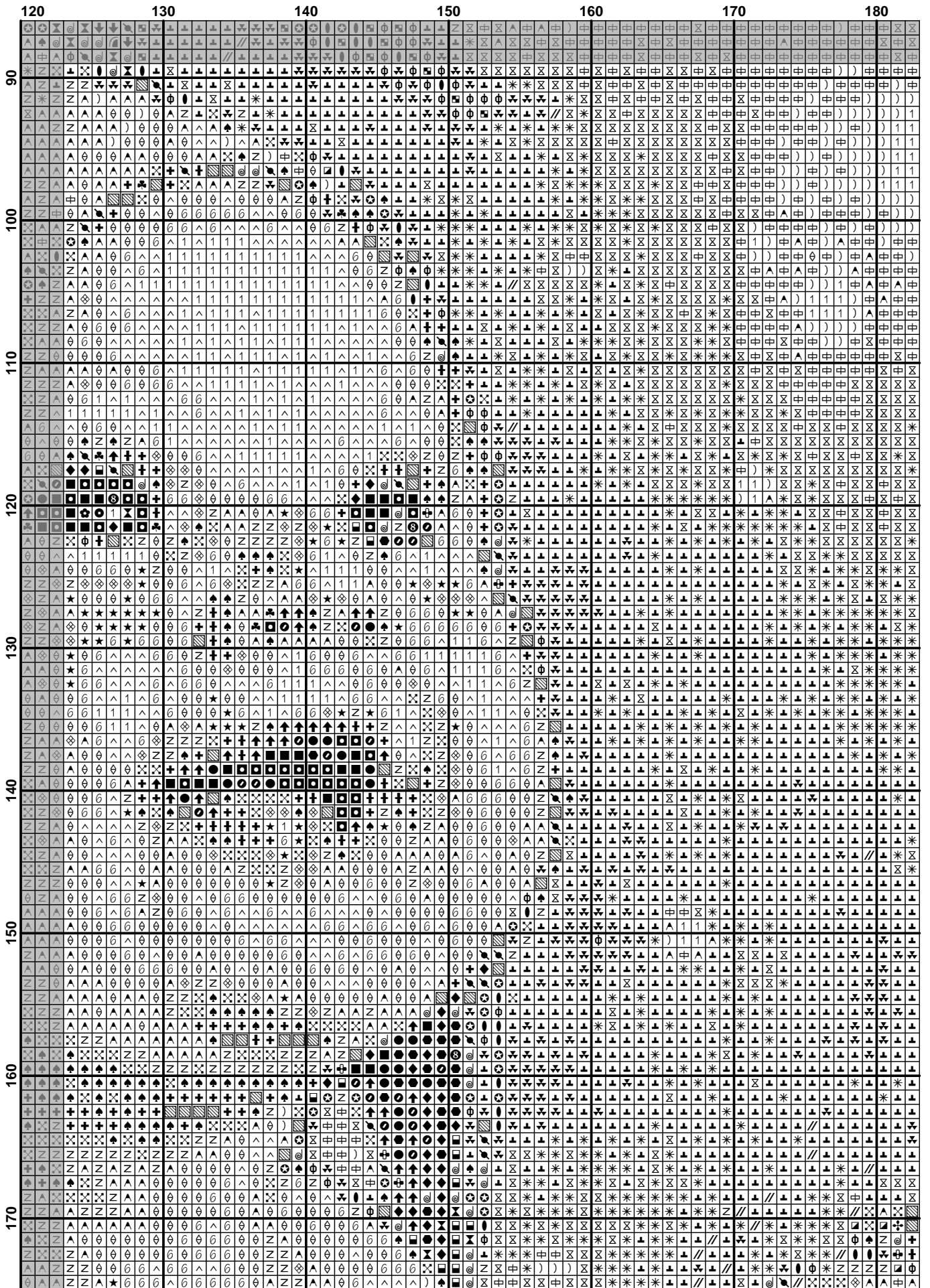


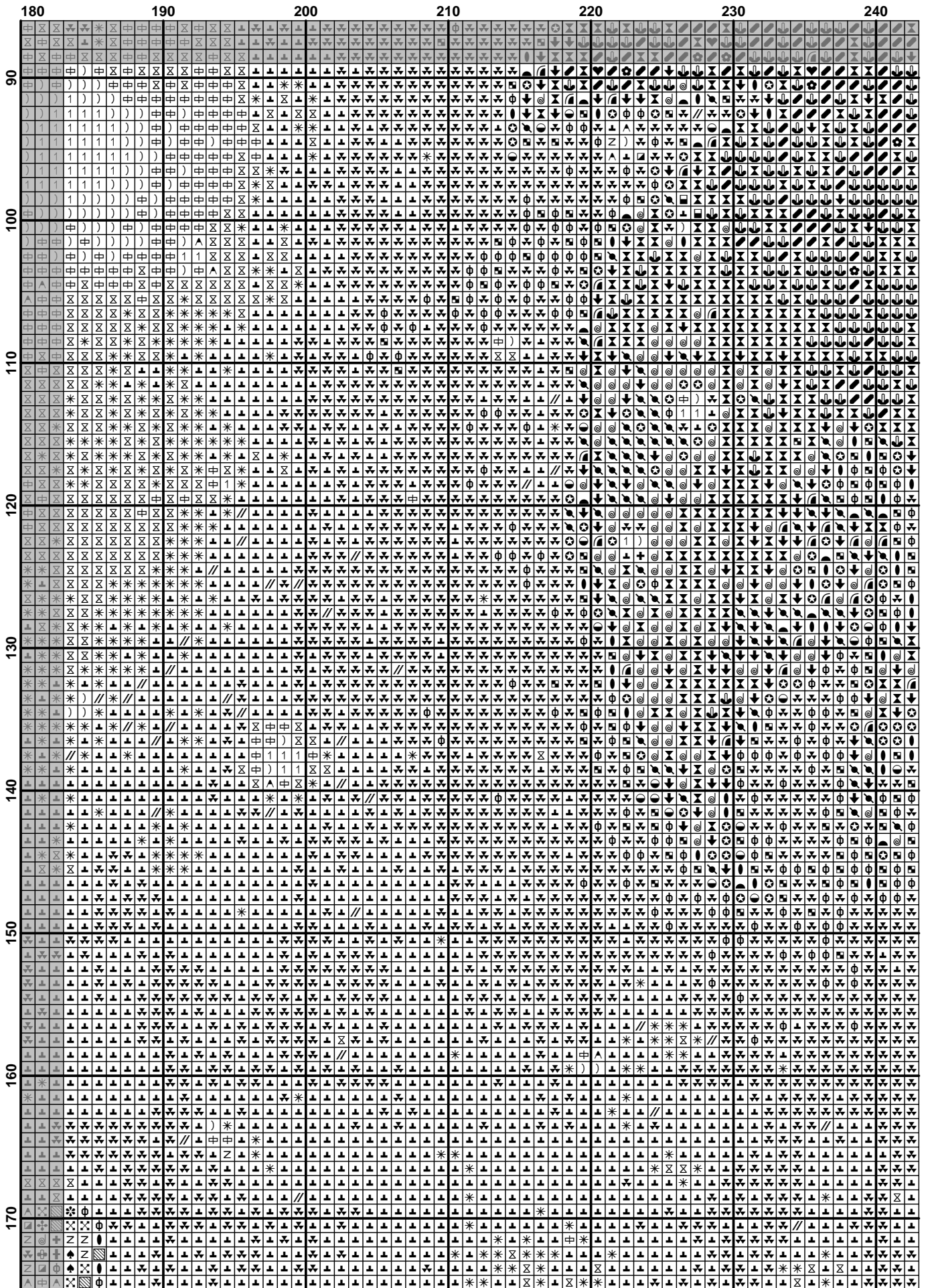


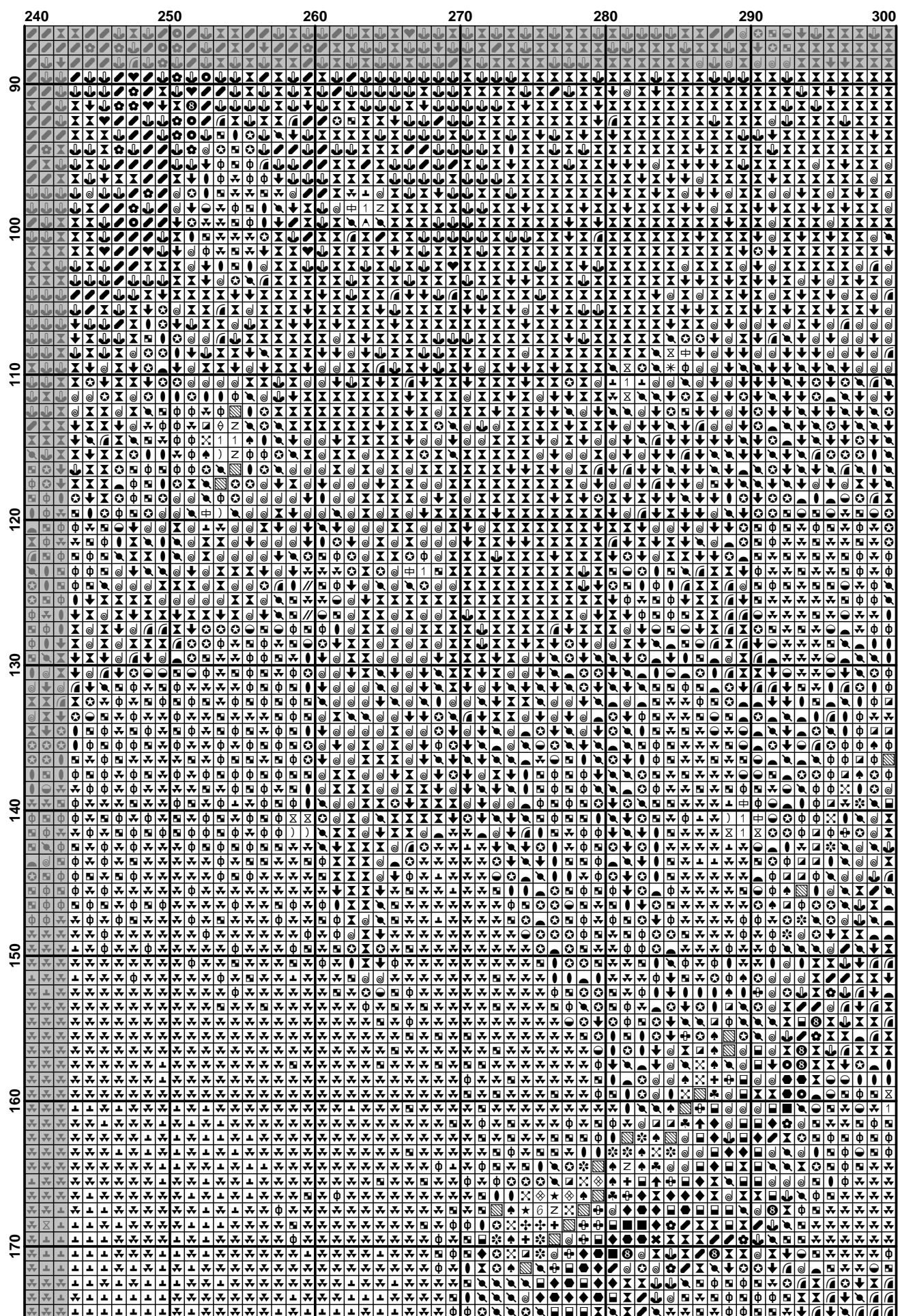


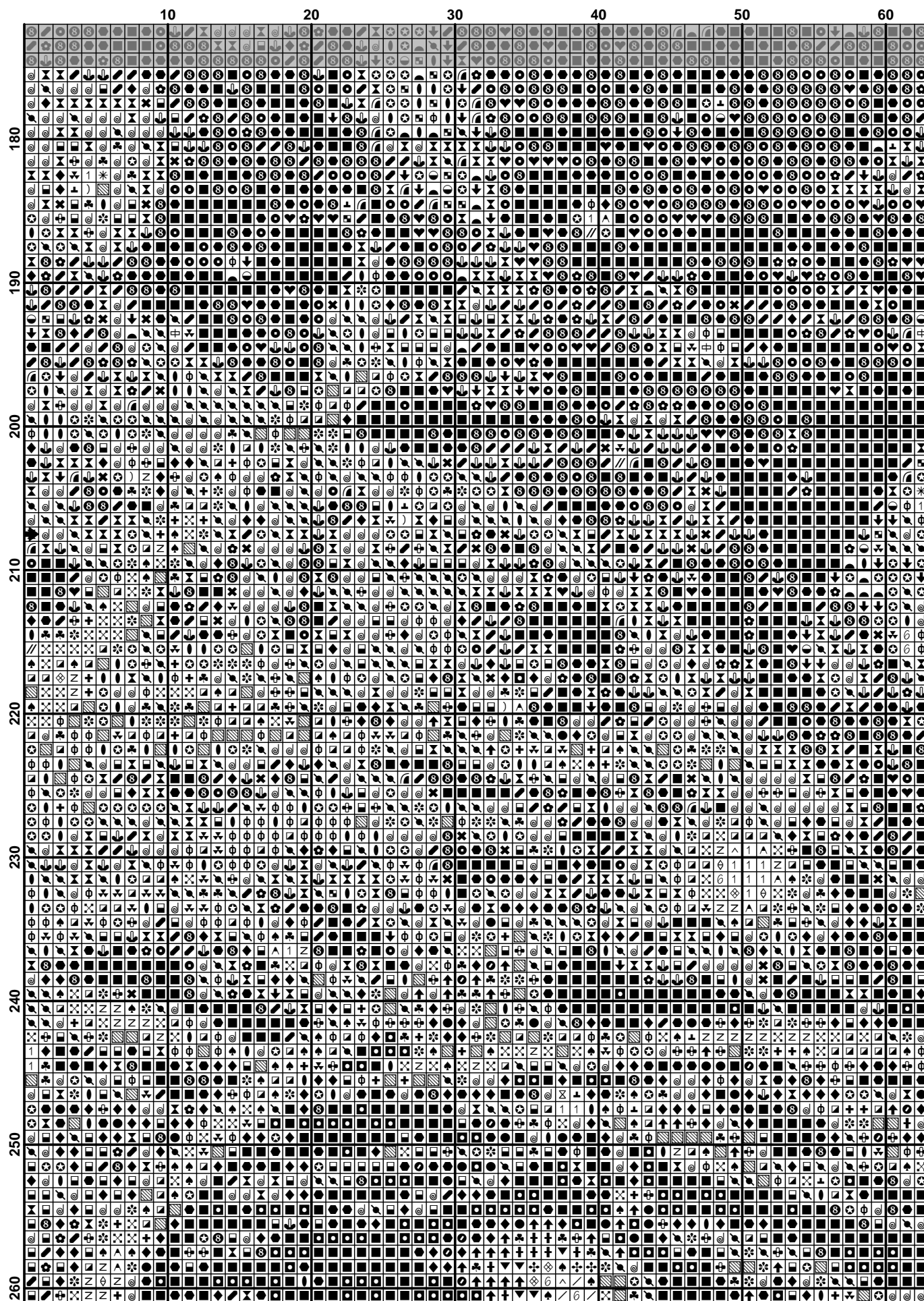


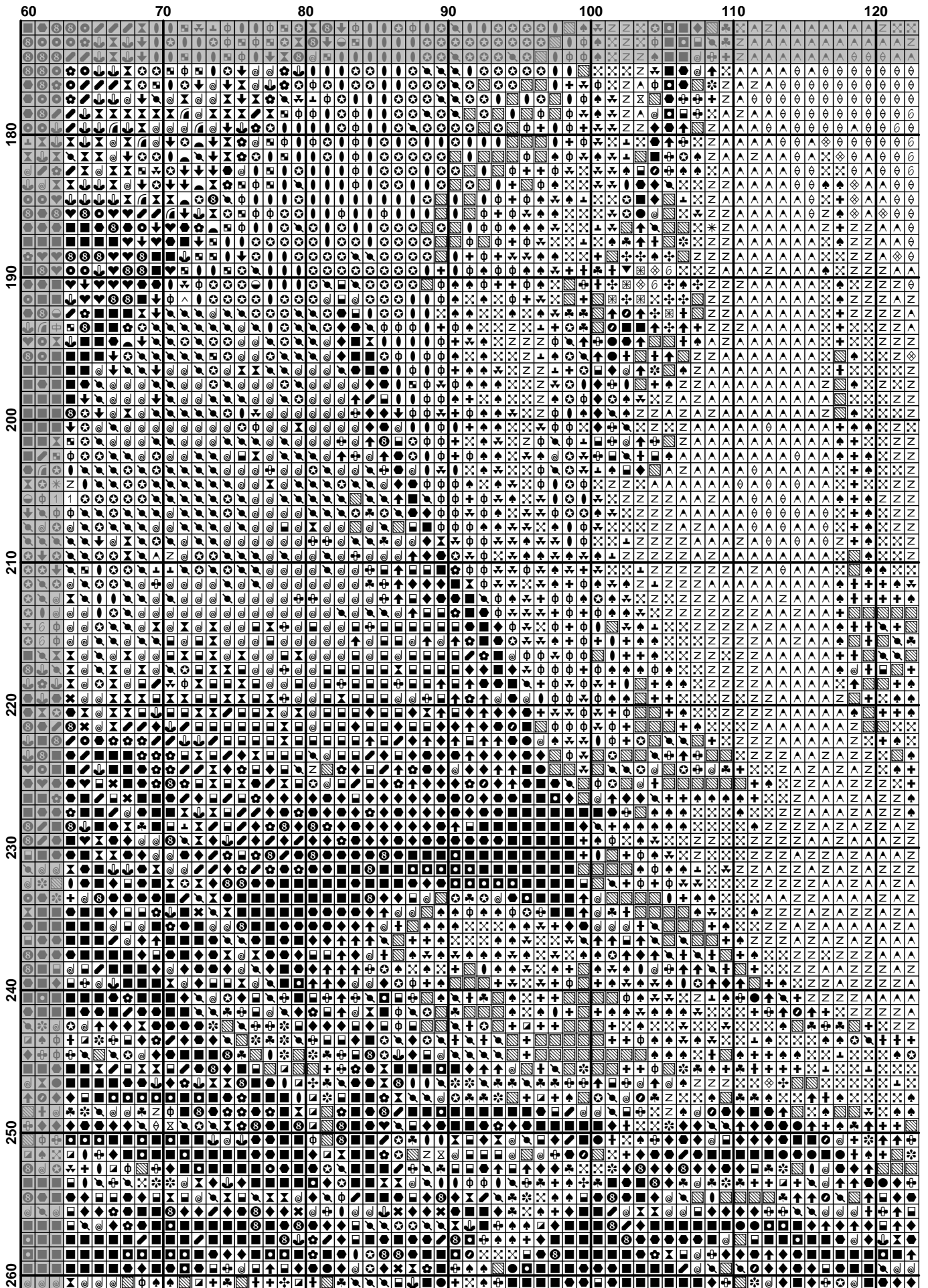


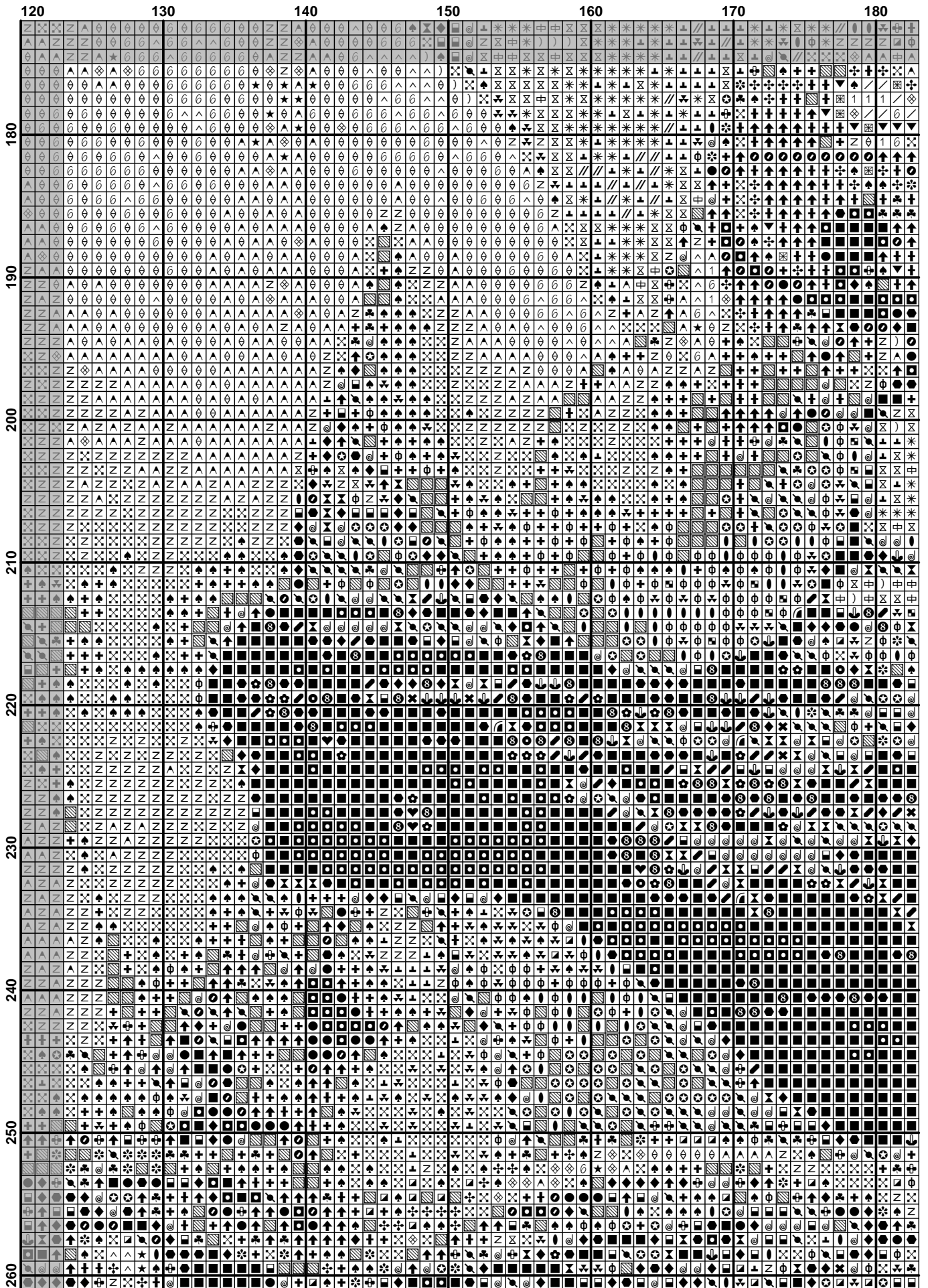


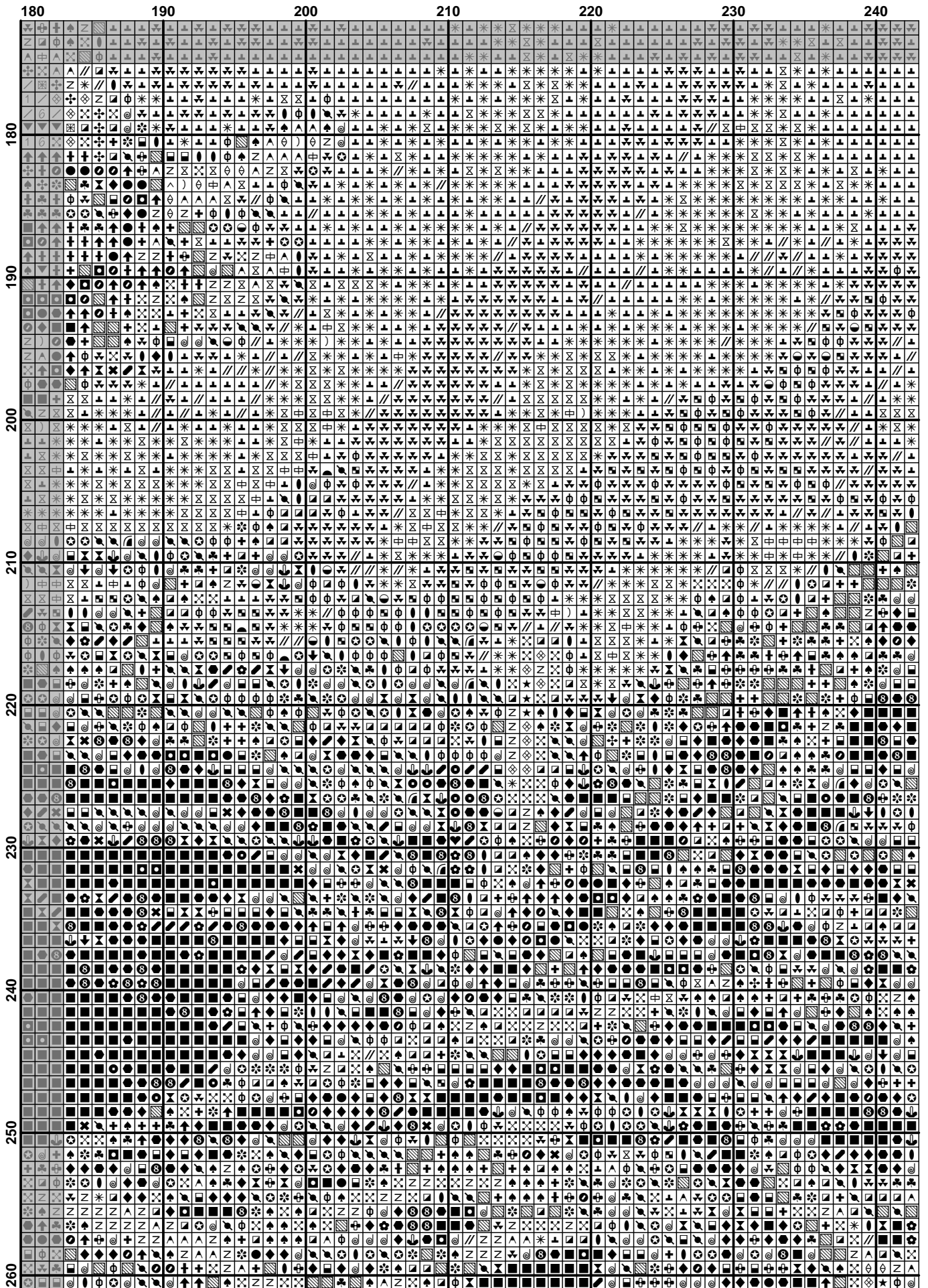


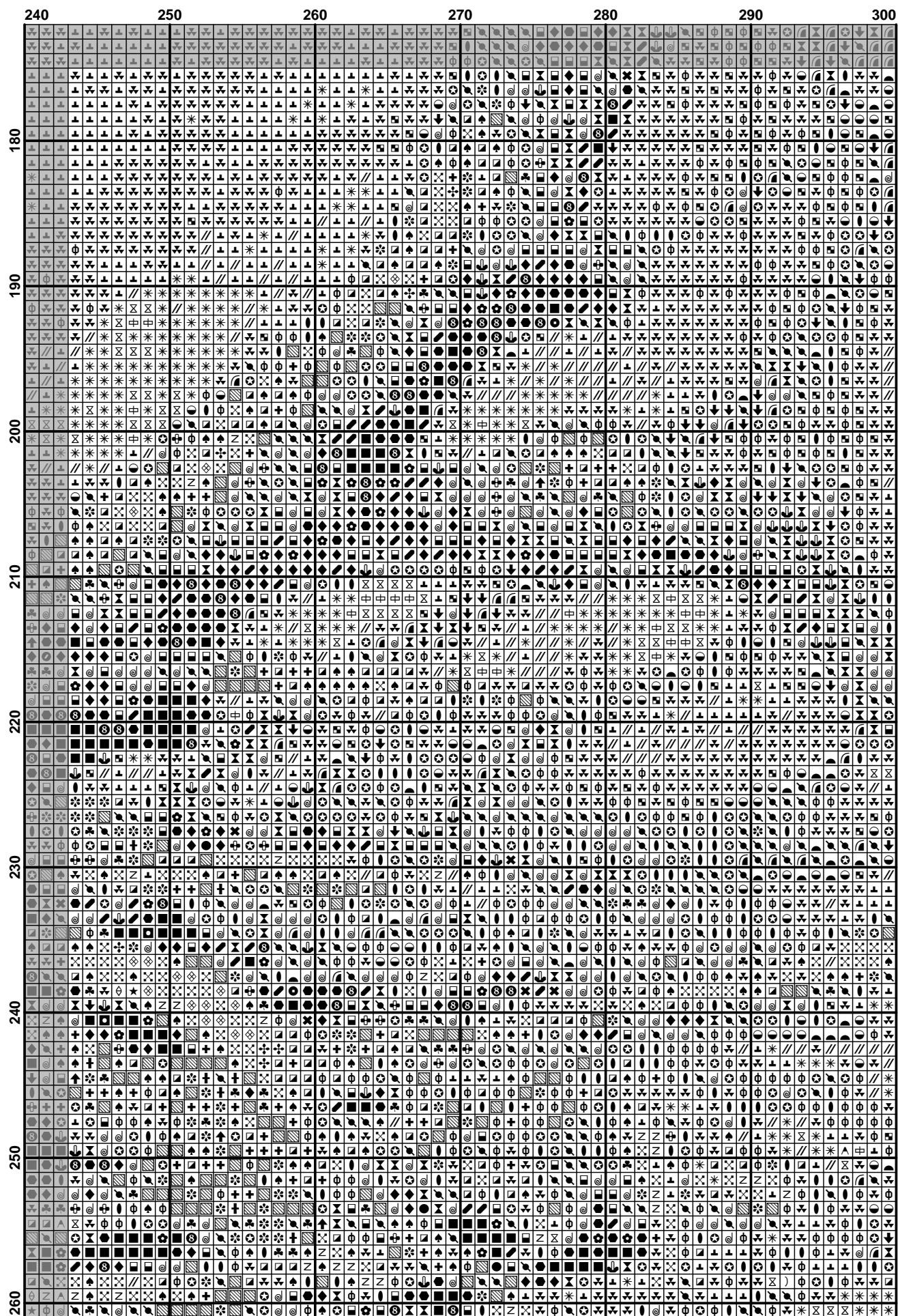


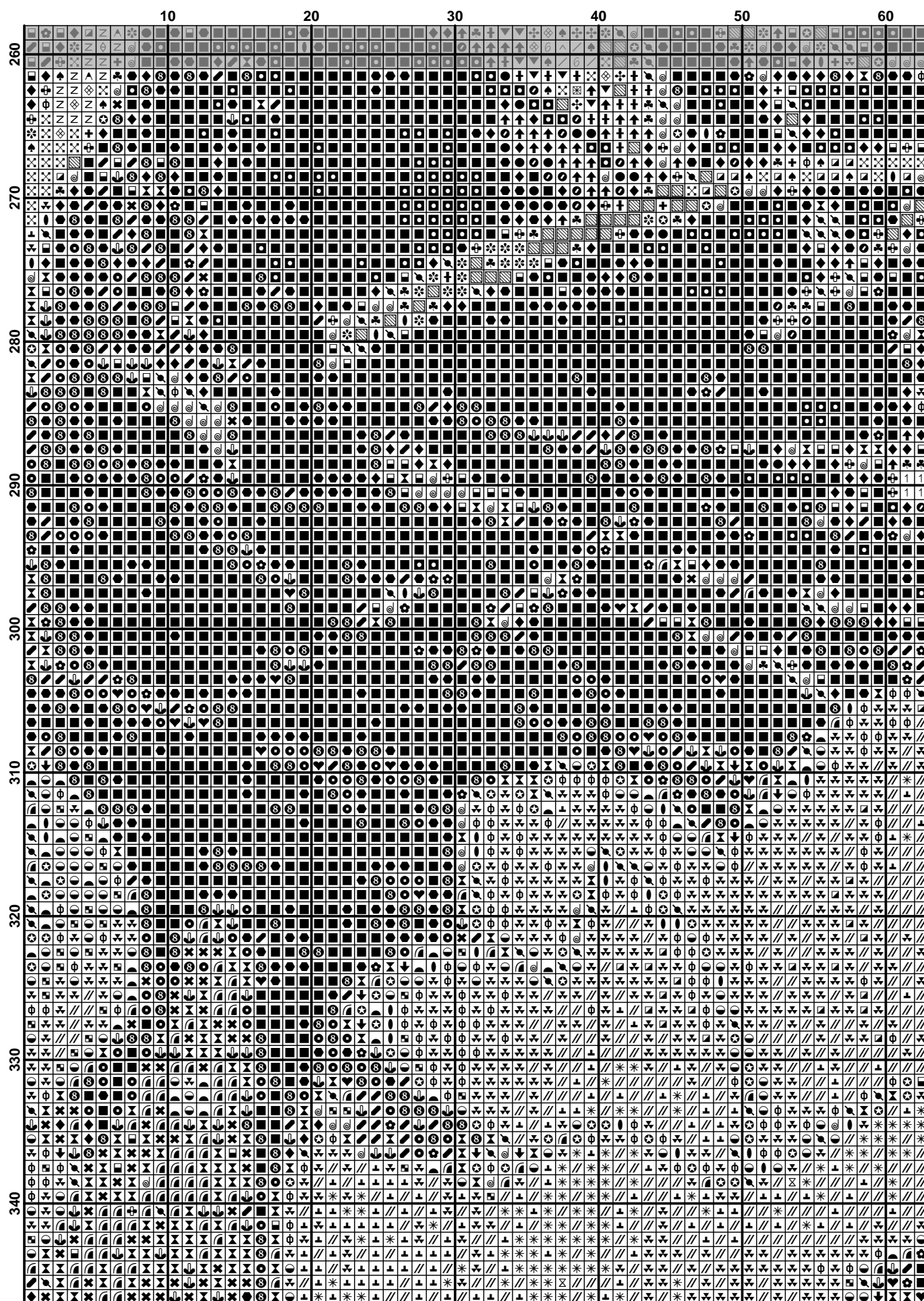


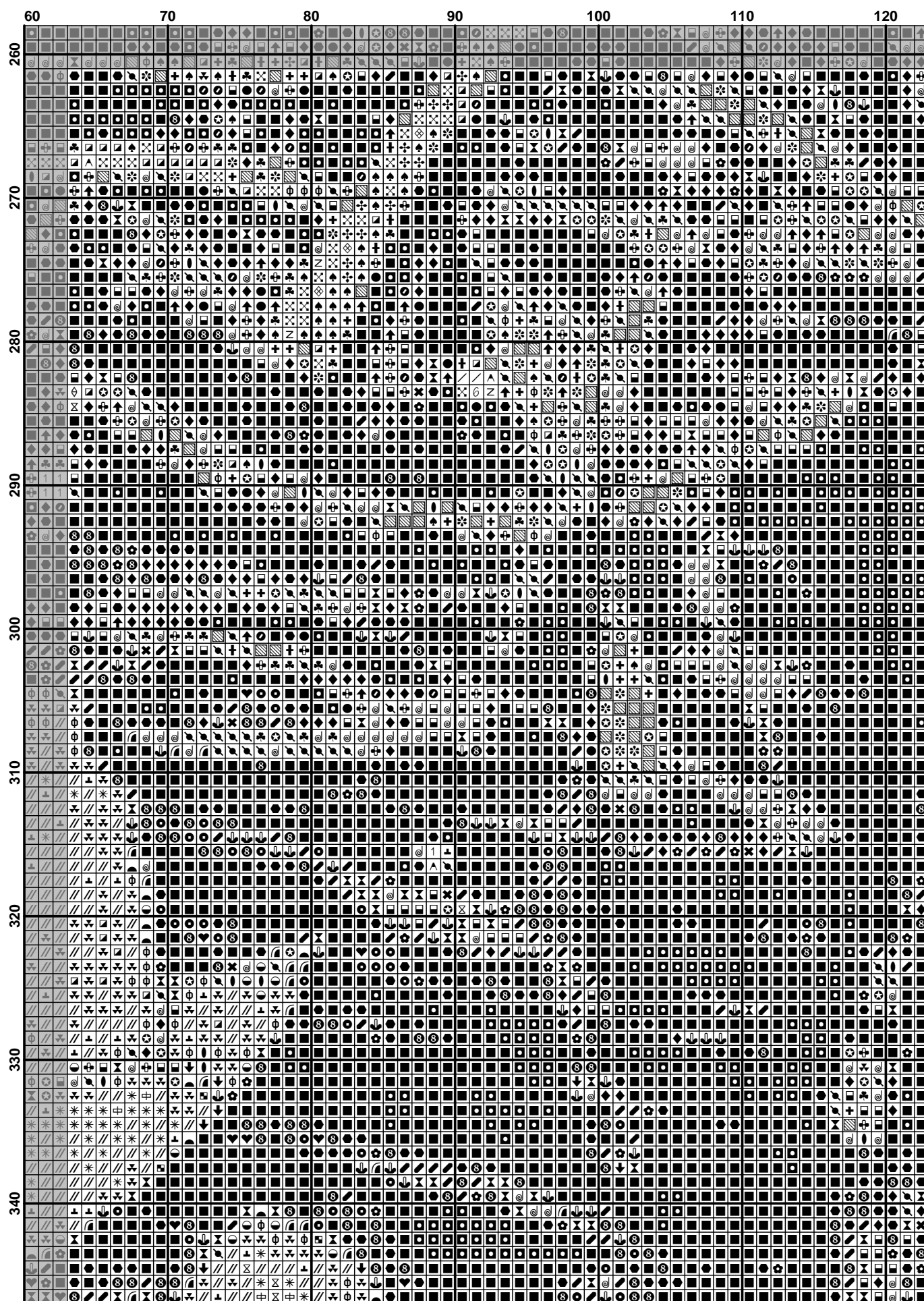


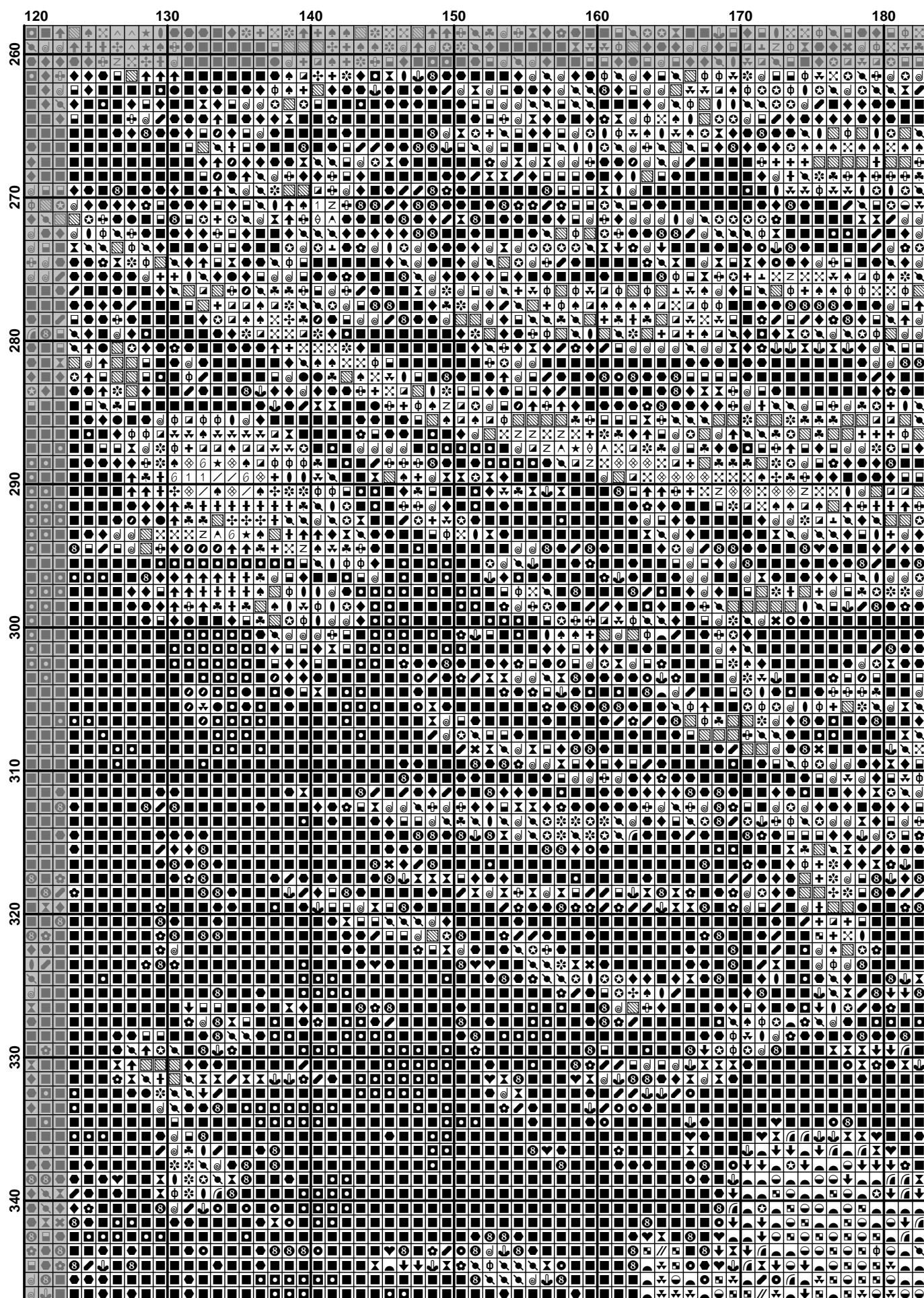


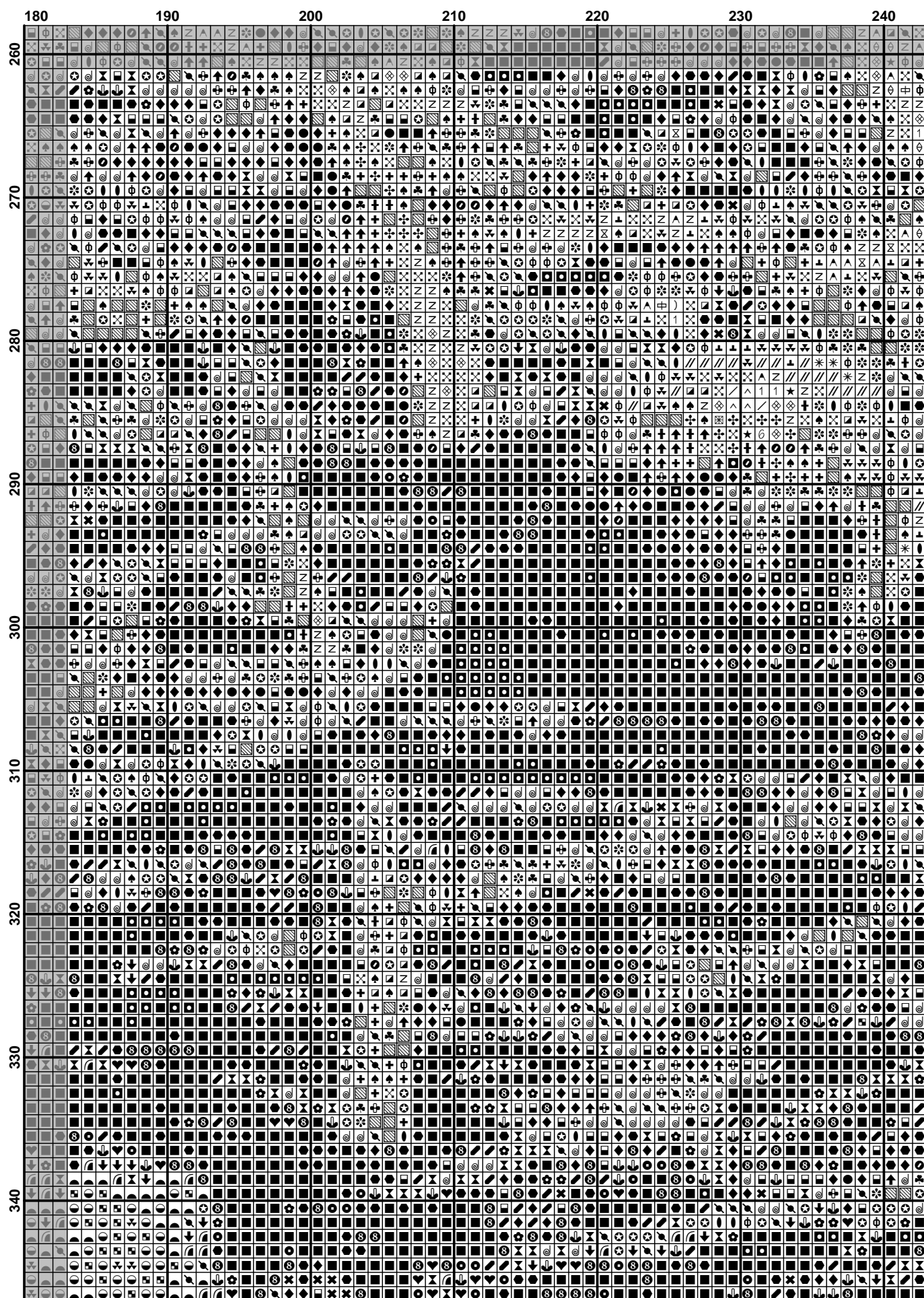


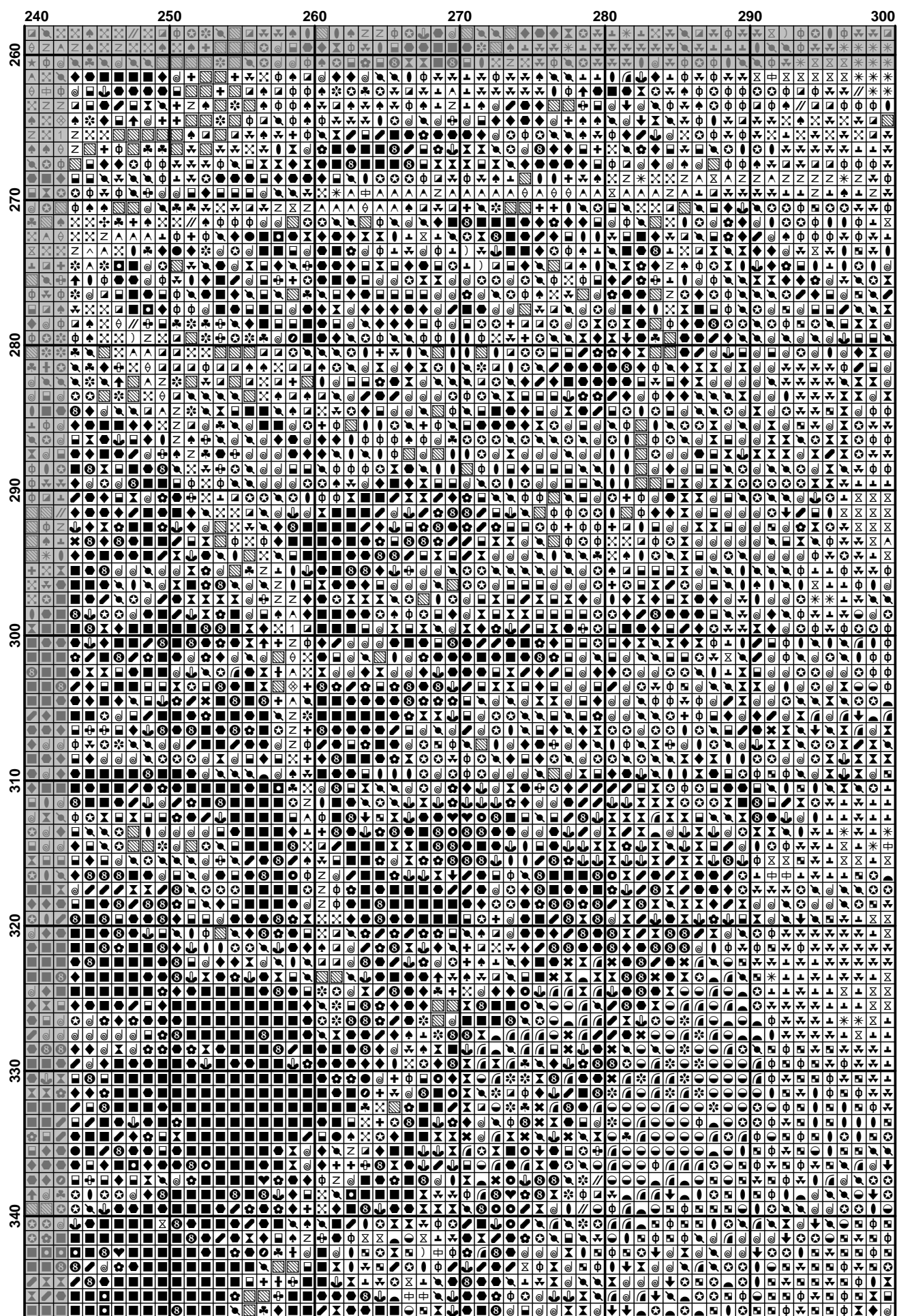


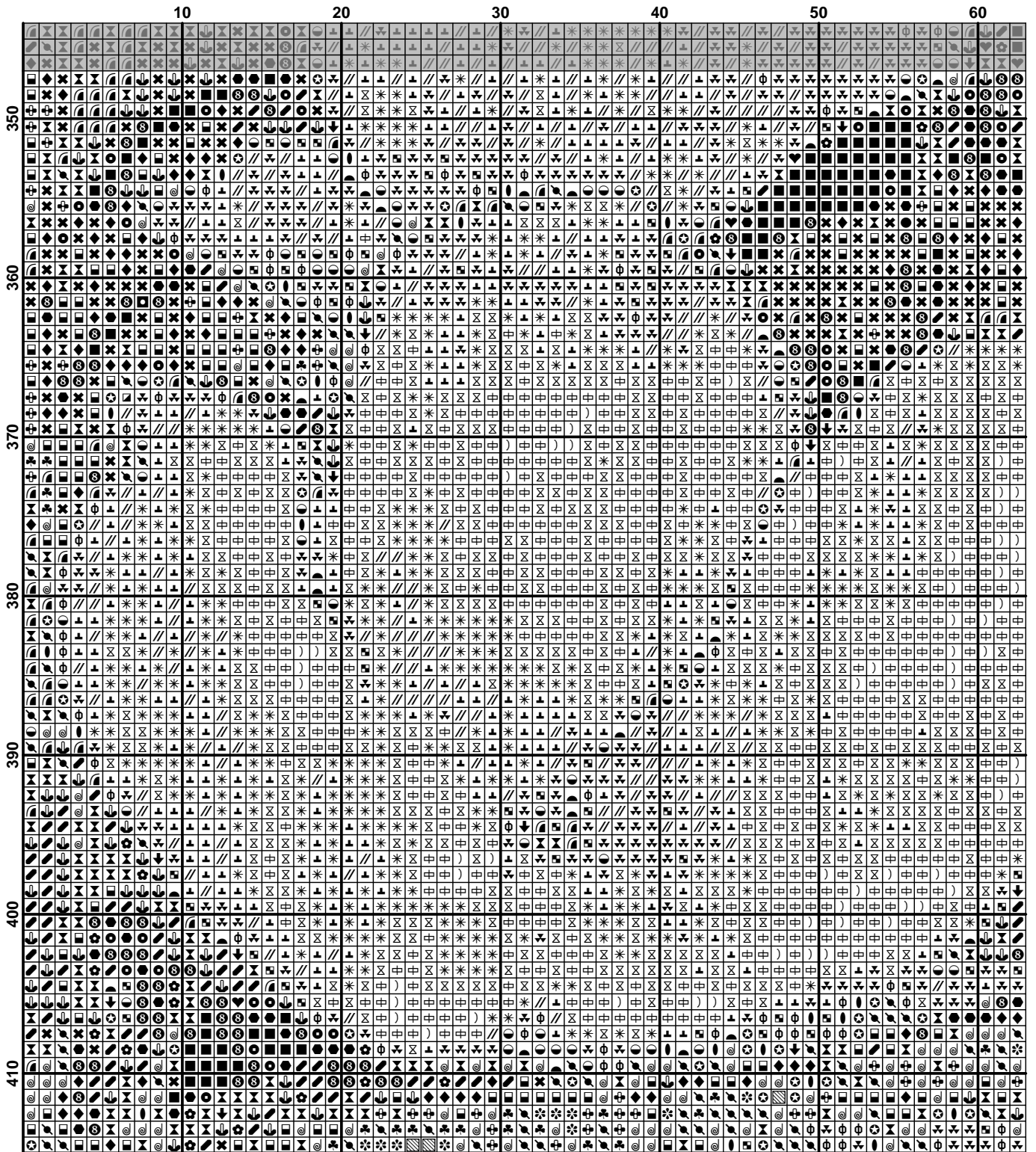


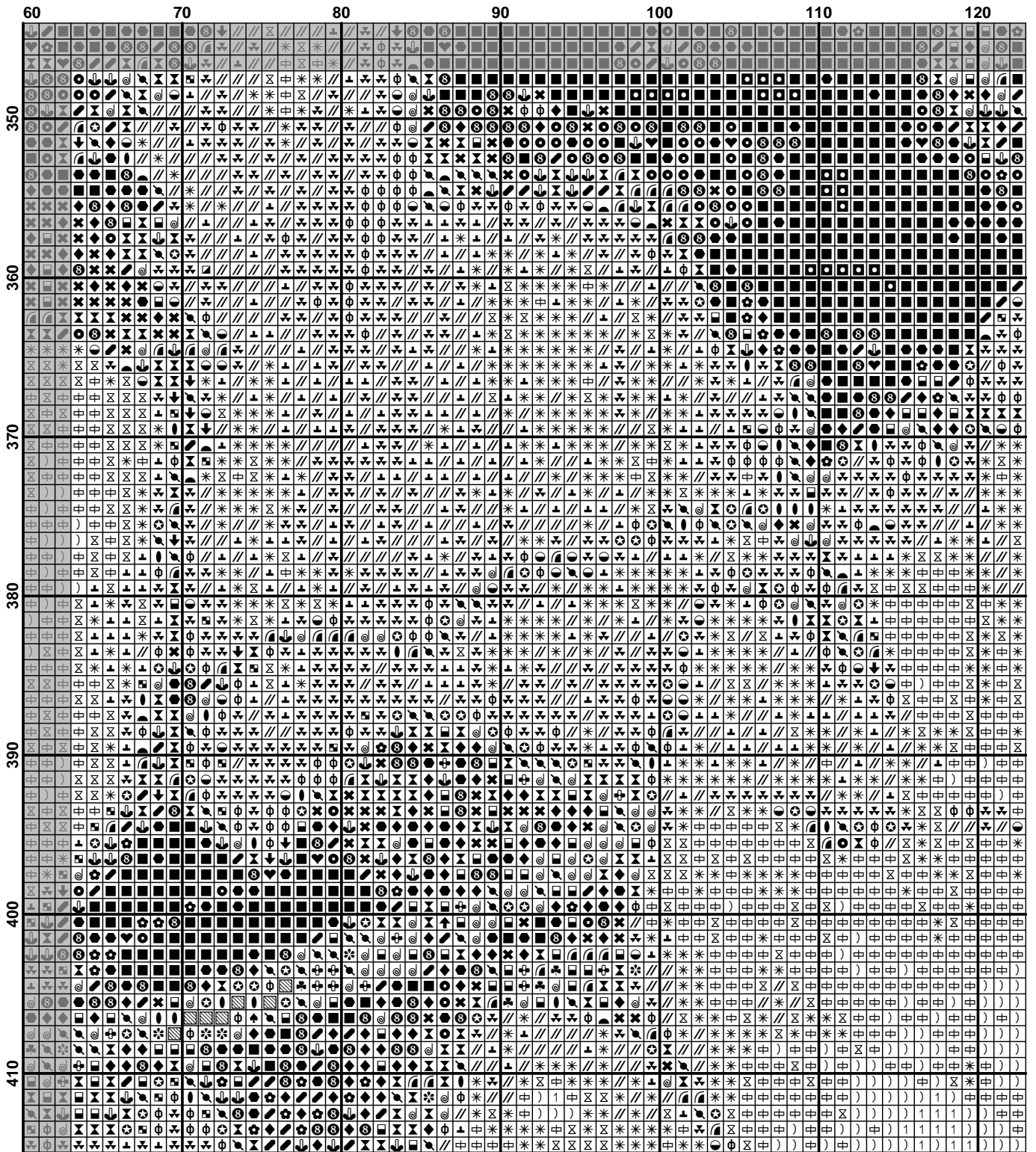


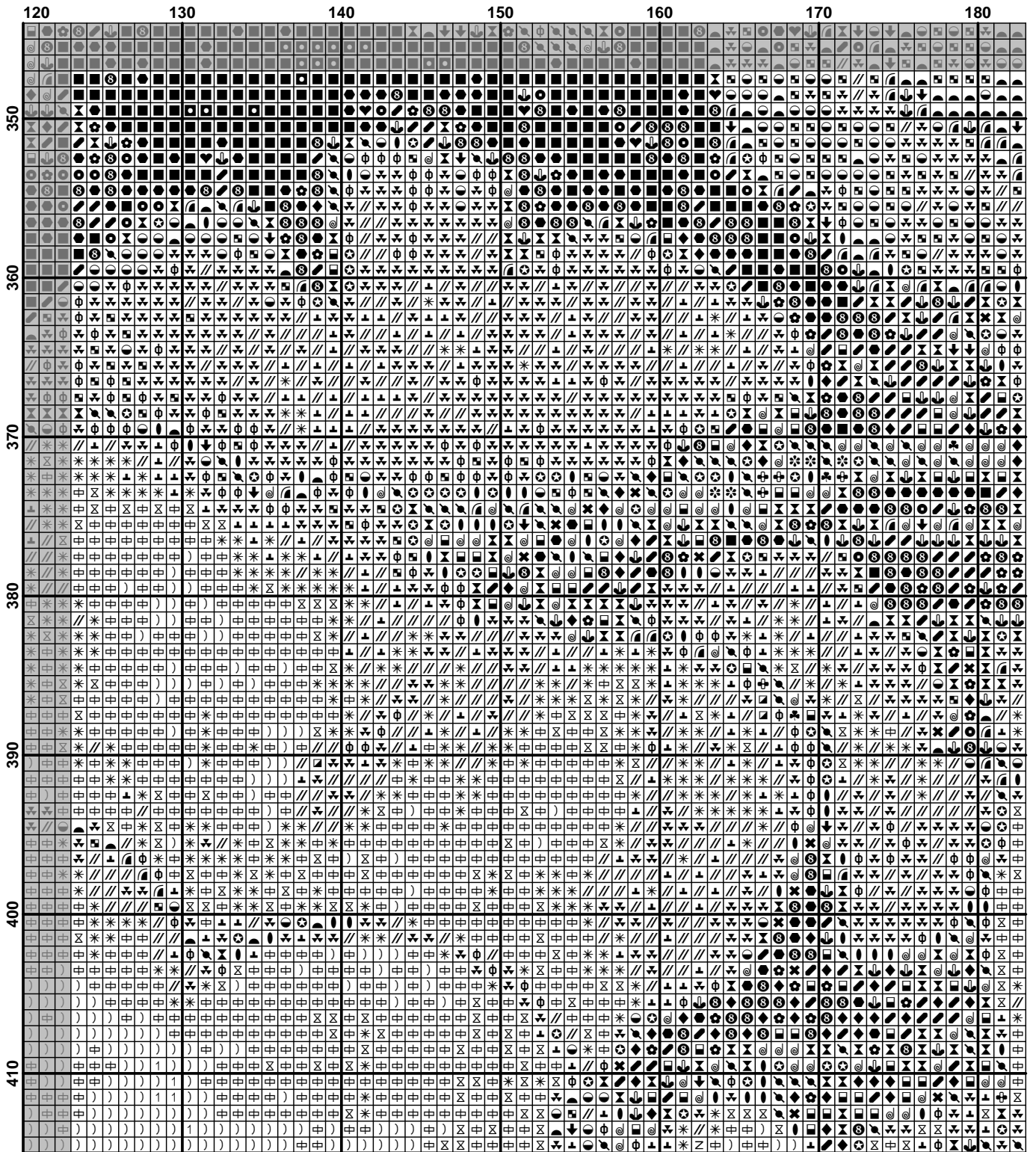


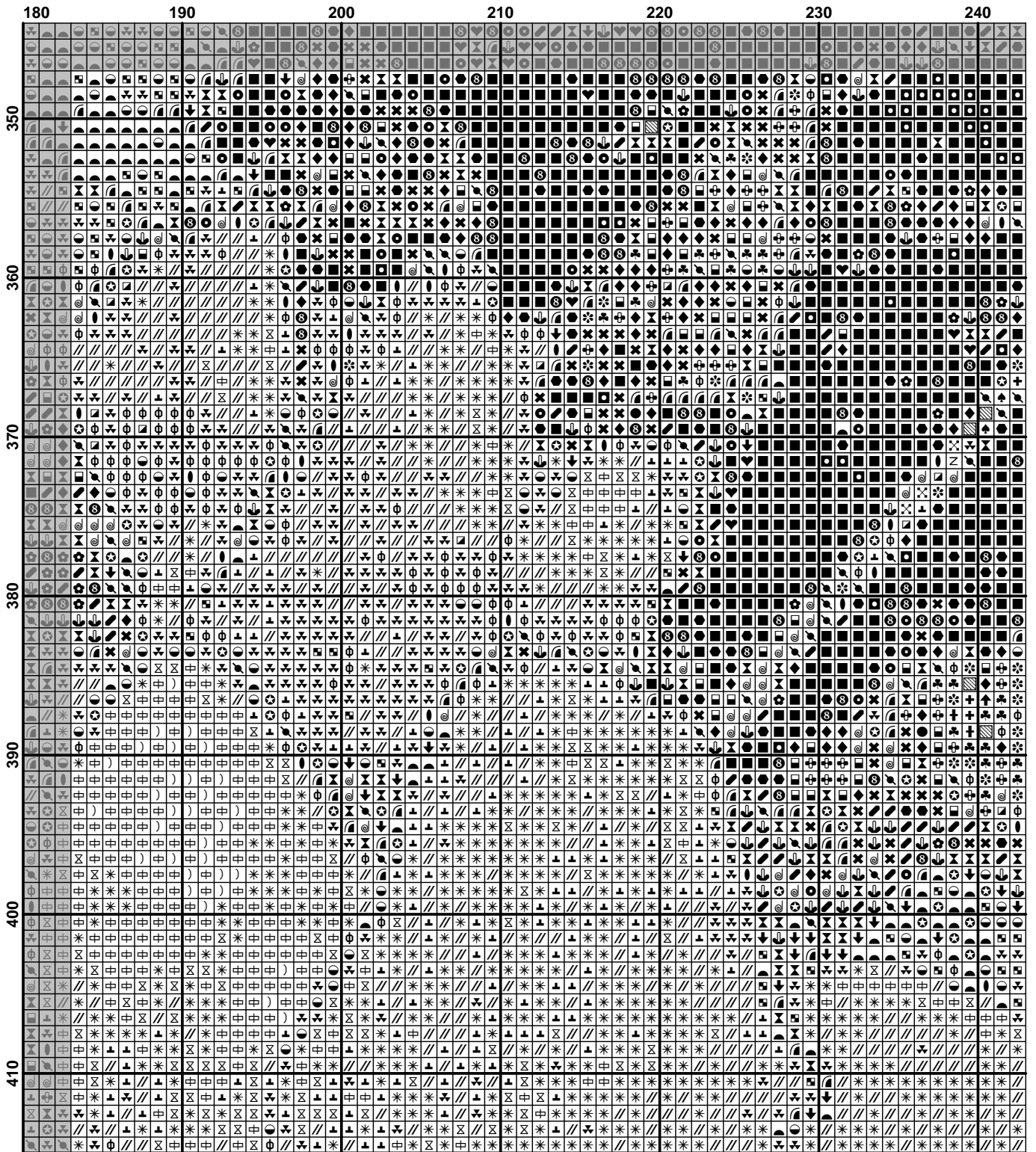


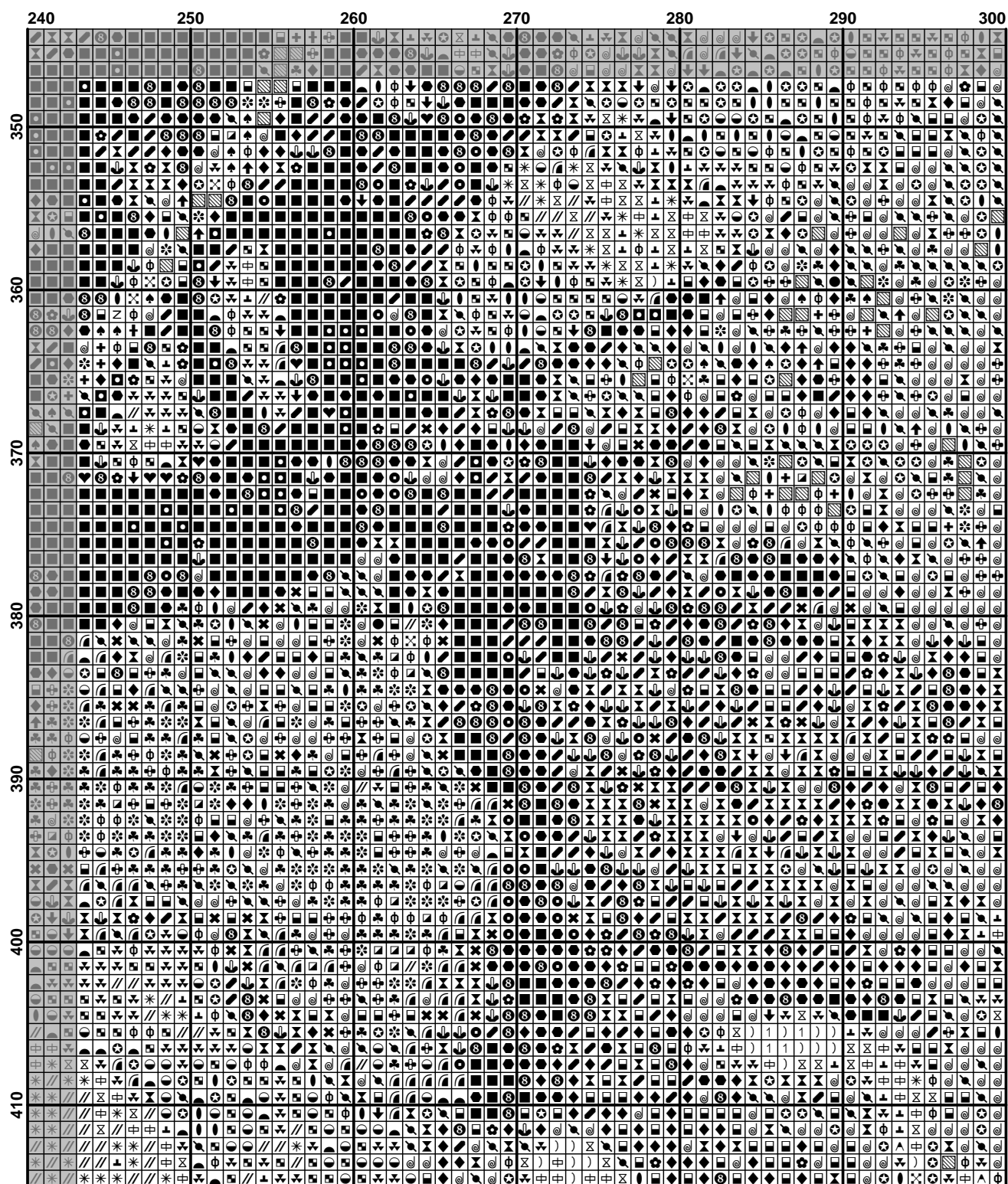






























Pattern Name: H470 "Рождественский сюрприз"
Designed By: Jean-Baptiste Monge
Company: ХИМЕРА
Fabric: Aida 18, White
 300w X 415h Stitches
Size(s) : 18 Count, 42.33w X 58.56h cm
 16 Count, 47.62w X 65.88h cm
 14 Count, 54.43w X 75.29h cm
 25 Count, 30.48w X 42.16h cm

Floss Used for Full Stitches:

Symbol	Strands	Type	Number	Color
	2	DMC	160	Gray Blue-MD
	2	DMC	161	Gray Blue
	2	DMC	167	Yellow Beige-VY DK
	2	DMC	168	Pewter-VY LT
	2	DMC	169	Pewter-LT
	2	DMC	310	Black
	2	DMC	311	Navy Blue-MD
	2	DMC	317	Pewter Gray
	2	DMC	318	Steel Gray-LT
	2	DMC	336	Navy Blue
	2	DMC	413	Pewter Gray-DK
	2	DMC	414	Steel Gray-DK
	2	DMC	415	Pearl Gray
	2	DMC	451	Shell Gray-DK
	2	DMC	452	Shell Gray-MD
	2	DMC	453	Shell Gray-LT
	2	DMC	535	Ash Gray-VY LT
	2	DMC	543	Beige Brown-UL VY LT
	2	DMC	645	Beaver Gray-VY DK
	2	DMC	646	Beaver Gray-DK
	2	DMC	647	Beaver Gray-MD
	2	DMC	677	Old Gold-VY LT
	2	DMC	779	Cocoa-DK
	2	DMC	823	Navy Blue-DK
	2	DMC	840	Beige Brown-MD
	2	DMC	841	Beige Brown-LT
	2	DMC	842	Beige Brown-VY LT
	2	DMC	924	Gray Green--VY DK
	2	DMC	926	Gray Green-MD
	2	DMC	927	Gray Green-LT
	2	DMC	928	Gray Green-VY LT
	2	DMC	930	Antique Blue-DK
	2	DMC	931	Antique Blue-MD
	2	DMC	939	Navy Blue-VY DK
	2	DMC	3031	Mocha Brown-VY DK
	2	DMC	3072	Beaver Gray-VY LT
	2	DMC	3371	Black Brown
	2	DMC	3750	Antique Blue-VY DK
	2	DMC	3768	Gray Green-DK
	2	DMC	3799	Pewter Gray-VY DK
	2	DMC	3828	Hazelnut Brown
	2	DMC	3861	Cocoa-LT
	2	DMC	3866	Mocha Brown-UL VY LT
	1	DMC	415	Pearl Gray
	1	DMC	318	Steel Gray-LT
	1	DMC	414	Steel Gray-DK
	1	DMC	317	Pewter Gray

Symbol	Strands	Type	Number	Color
 8	1	DMC	823	Navy Blue-DK
 ♠	1	DMC	3750	Antique Blue-VY DK
 ♠	1	DMC	452	Shell Gray-MD
 Z	1	DMC	3861	Cocoa-LT
 Z	1	DMC	452	Shell Gray-MD
 ★	1	DMC	453	Shell Gray-LT
 ★	1	DMC	543	Beige Brown-UL VY LT
 ^	1	DMC	842	Beige Brown-VY LT
 ^	1	DMC	543	Beige Brown-UL VY LT
 ^	1	DMC	3866	Mocha Brown-UL VY LT
 0	1	DMC	169	Pewter-LT
 0	1	DMC	414	Steel Gray-DK
 ♠	1	DMC	453	Shell Gray-LT
 ♠	1	DMC	543	Beige Brown-UL VY LT
 0	1	DMC	336	Navy Blue
 0	1	DMC	930	Antique Blue-DK
 X	1	DMC	317	Pewter Gray
 X	1	DMC	930	Antique Blue-DK

Расход нитей

Нитей на моток: 6

Длина мотка: 795.0 cm

Type	Number	Full	Half	Quarter	Petite	Back(cm)	Str(cm)	Spec(cm)	French	Bead	Skein Est.
DMC	160	2001	0	0	0	0.0	0.0	0.0	0	0	1.000
DMC	161	2404	0	0	0	0.0	0.0	0.0	0	0	1.000
DMC	167	18	0	0	0	0.0	0.0	0.0	0	0	1.000
DMC	168	3553	0	0	0	0.0	0.0	0.0	0	0	2.000
DMC	169	3286	0	0	0	0.0	0.0	0.0	0	0	2.000
DMC	310	1574	0	0	0	0.0	0.0	0.0	0	0	1.000
DMC	311	1381	0	0	0	0.0	0.0	0.0	0	0	1.000
DMC	317	5173	0	0	0	0.0	0.0	0.0	0	0	2.000
DMC	318	8501	0	0	0	0.0	0.0	0.0	0	0	3.000
DMC	336	2417	0	0	0	0.0	0.0	0.0	0	0	1.000
DMC	413	3184	0	0	0	0.0	0.0	0.0	0	0	2.000
DMC	414	3223	0	0	0	0.0	0.0	0.0	0	0	2.000
DMC	415	2323	0	0	0	0.0	0.0	0.0	0	0	1.000
DMC	451	1954	0	0	0	0.0	0.0	0.0	0	0	1.000
DMC	452	1711	0	0	0	0.0	0.0	0.0	0	0	1.000
DMC	453	1283	0	0	0	0.0	0.0	0.0	0	0	1.000
DMC	535	1113	0	0	0	0.0	0.0	0.0	0	0	1.000
DMC	543	358	0	0	0	0.0	0.0	0.0	0	0	1.000
DMC	645	729	0	0	0	0.0	0.0	0.0	0	0	1.000
DMC	646	742	0	0	0	0.0	0.0	0.0	0	0	1.000
DMC	647	780	0	0	0	0.0	0.0	0.0	0	0	1.000
DMC	677	17	0	0	0	0.0	0.0	0.0	0	0	1.000
DMC	779	746	0	0	0	0.0	0.0	0.0	0	0	1.000
DMC	823	5742	0	0	0	0.0	0.0	0.0	0	0	2.000
DMC	840	322	0	0	0	0.0	0.0	0.0	0	0	1.000
DMC	841	114	0	0	0	0.0	0.0	0.0	0	0	1.000
DMC	842	197	0	0	0	0.0	0.0	0.0	0	0	1.000
DMC	924	582	0	0	0	0.0	0.0	0.0	0	0	1.000
DMC	926	1004	0	0	0	0.0	0.0	0.0	0	0	1.000
DMC	927	2219	0	0	0	0.0	0.0	0.0	0	0	1.000
DMC	928	2720	0	0	0	0.0	0.0	0.0	0	0	1.000
DMC	930	5324	0	0	0	0.0	0.0	0.0	0	0	2.000
DMC	931	962	0	0	0	0.0	0.0	0.0	0	0	1.000
DMC	939	12181	0	0	0	0.0	0.0	0.0	0	0	4.000
DMC	3031	223	0	0	0	0.0	0.0	0.0	0	0	1.000
DMC	3072	706	0	0	0	0.0	0.0	0.0	0	0	1.000
DMC	3371	265	0	0	0	0.0	0.0	0.0	0	0	1.000
DMC	3750	3015	0	0	0	0.0	0.0	0.0	0	0	1.000
DMC	3768	1244	0	0	0	0.0	0.0	0.0	0	0	1.000
DMC	3799	3309	0	0	0	0.0	0.0	0.0	0	0	2.000
DMC	3828	14	0	0	0	0.0	0.0	0.0	0	0	1.000
DMC	3861	1051	0	0	0	0.0	0.0	0.0	0	0	1.000
DMC	3866	436	0	0	0	0.0	0.0	0.0	0	0	1.000
DMC	415	5208	0	0	0	0.0	0.0	0.0	0	0	2.000
DMC	318										
DMC	414	3996	0	0	0	0.0	0.0	0.0	0	0	2.000
DMC	317										
DMC	823	5147	0	0	0	0.0	0.0	0.0	0	0	2.000
DMC	3750										
DMC	452	1557	0	0	0	0.0	0.0	0.0	0	0	1.000
DMC	3861										
DMC	452	1341	0	0	0	0.0	0.0	0.0	0	0	1.000
DMC	453										

Type	Number	Full	Half	Quarter	Petite	Back(cm)	Str(cm)	Spec(cm)	French	Bead	Skein Est.
■ DMC	543	76	0	0	0	0.0	0.0	0.0	0	0	1.000
■ DMC	842										
■ DMC	543	453	0	0	0	0.0	0.0	0.0	0	0	1.000
■ DMC	3866										
■ DMC	169	1882	0	0	0	0.0	0.0	0.0	0	0	1.000
■ DMC	414										
■ DMC	453	1026	0	0	0	0.0	0.0	0.0	0	0	1.000
■ DMC	543										
■ DMC	336	5739	0	0	0	0.0	0.0	0.0	0	0	2.000
■ DMC	930										
■ DMC	317	7974	0	0	0	0.0	0.0	0.0	0	0	3.000
■ DMC	930										