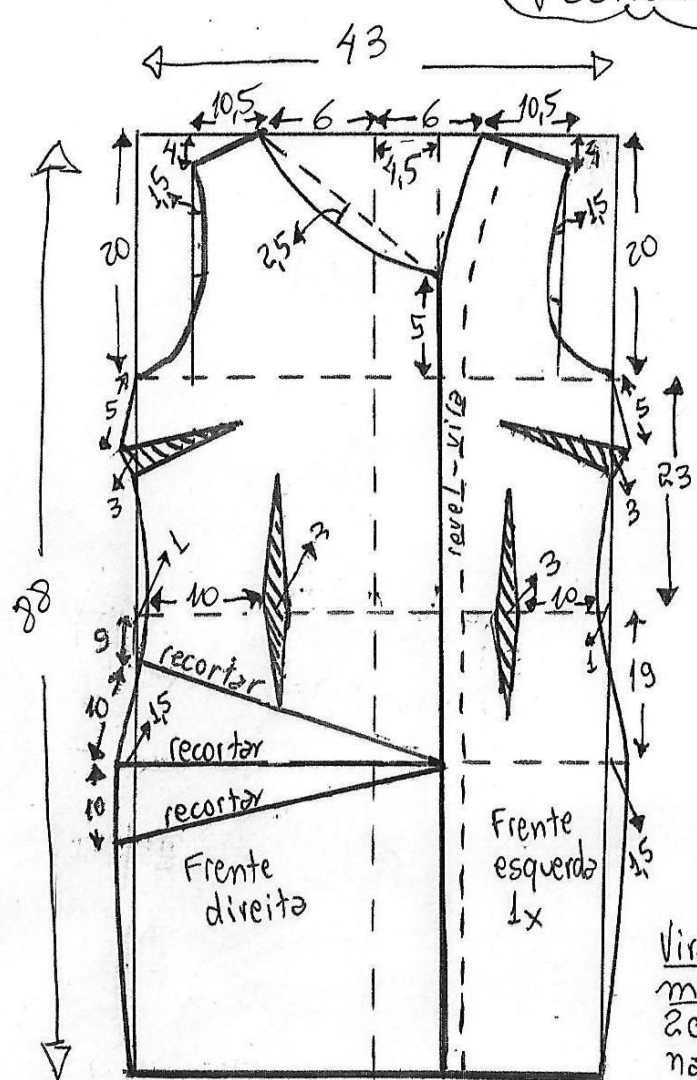
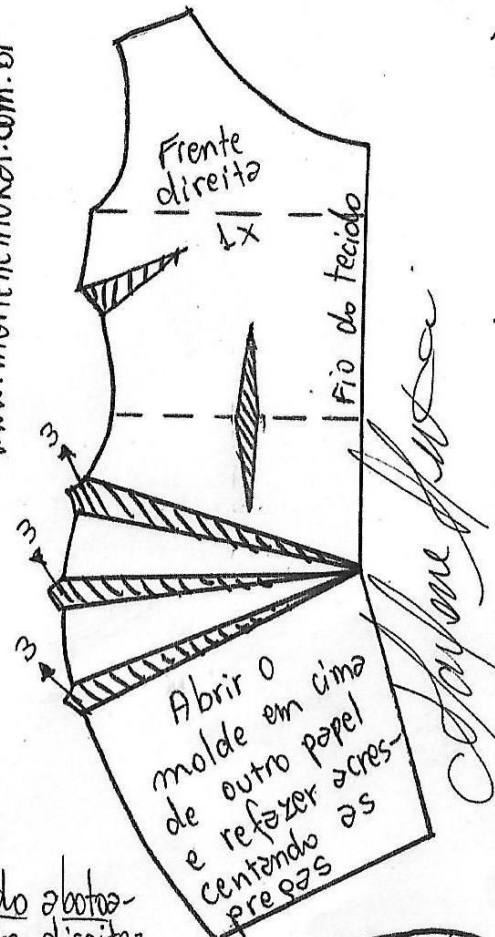




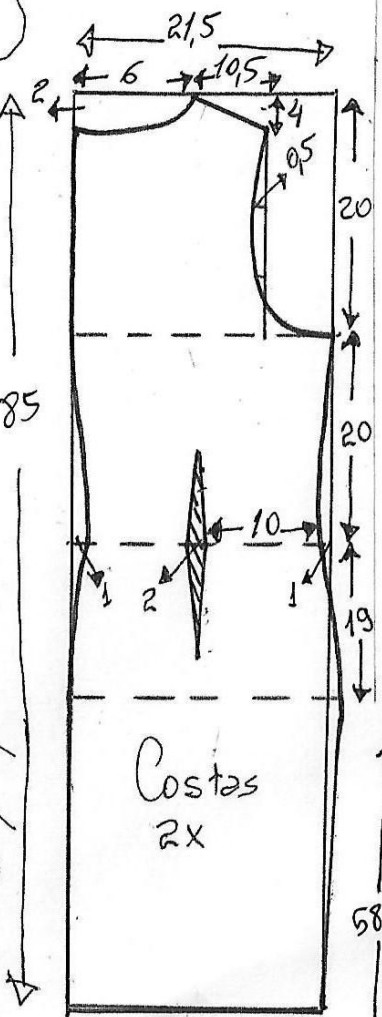
# Vestido Camisa manga longa 36



www.merletemukai.com.br



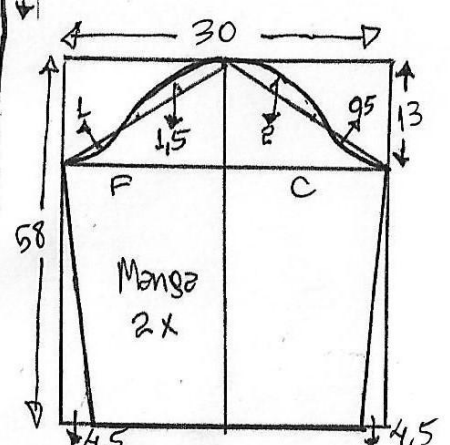
Vira do abotoamento direito: 2cm por 73cm na dobra



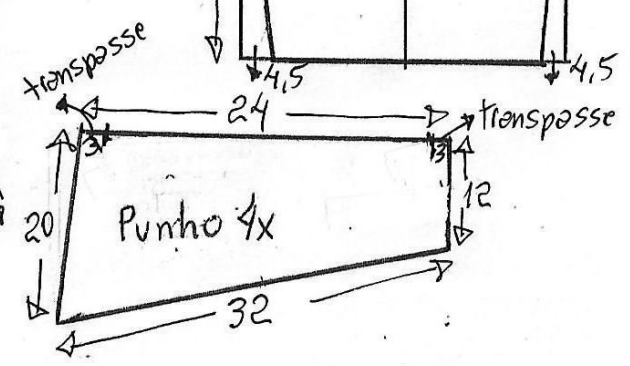
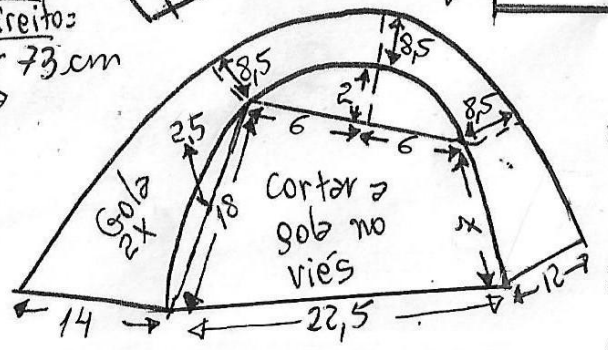
Molde sem margem de costura



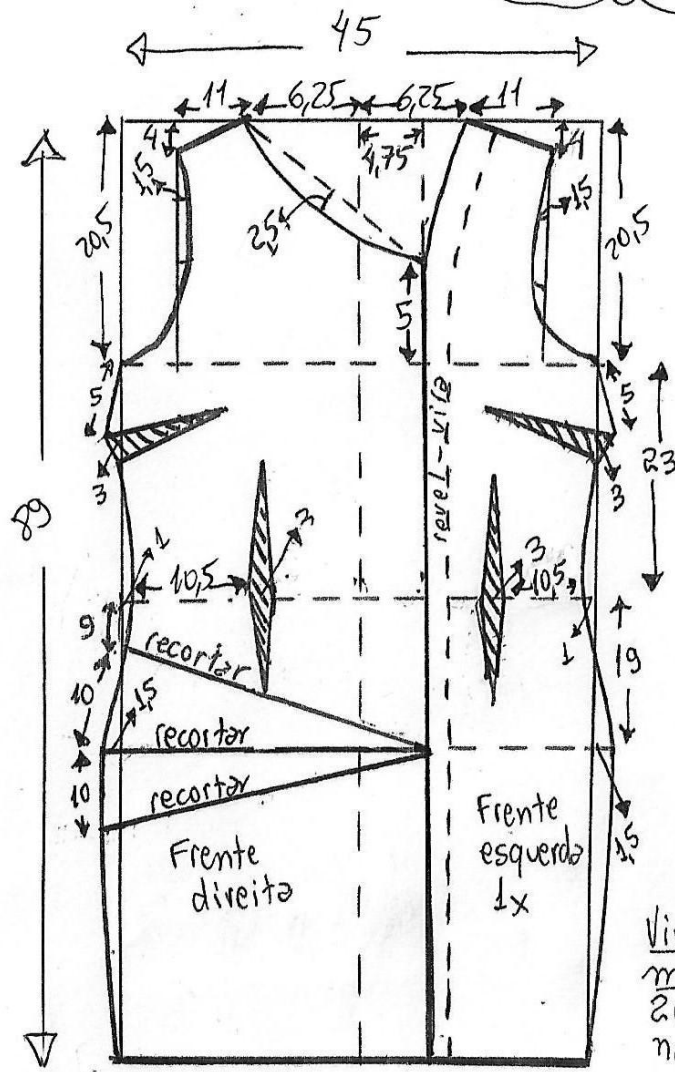
Molde para tecido com stretch



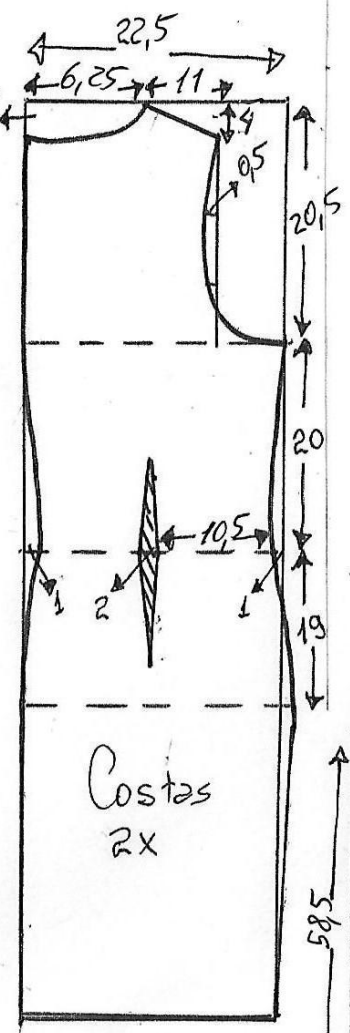
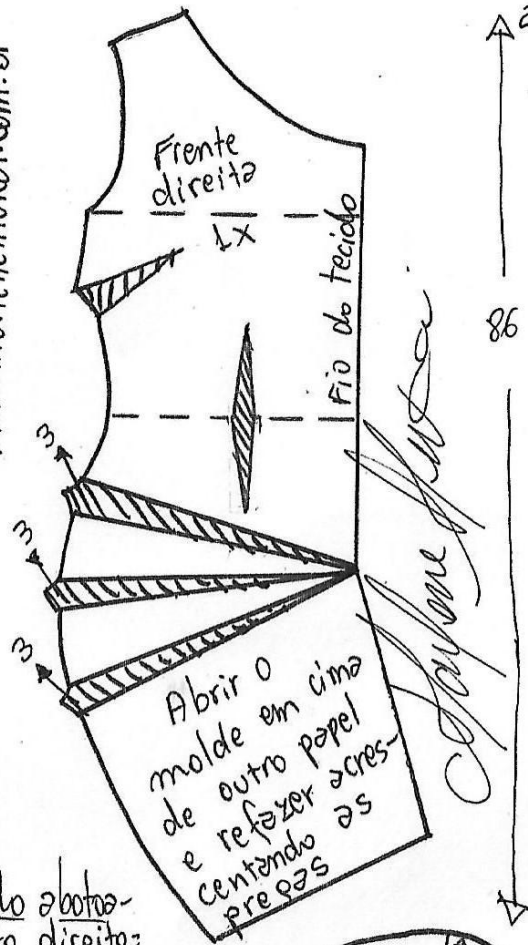
Tecido = 2m de tricoline, popeline, crepe com stretch...  
 Botões = 12  
 Cinto = 4cm por 1,80m na dobra.



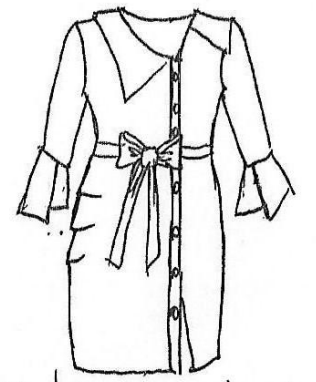
# Vestido Camisa manga longa 38



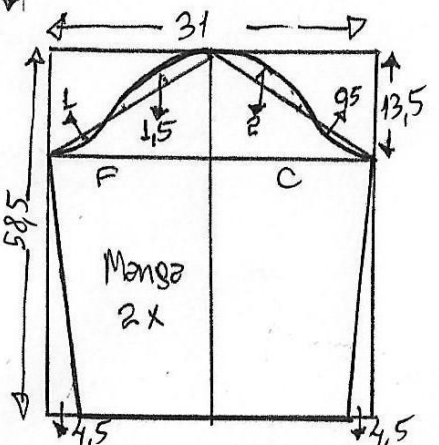
www.marlenebukai.com.br



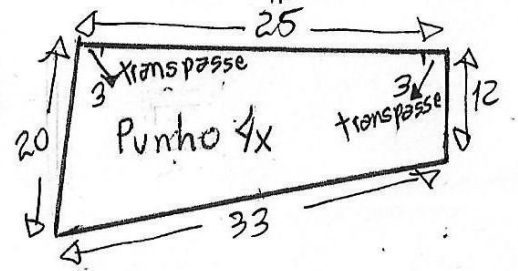
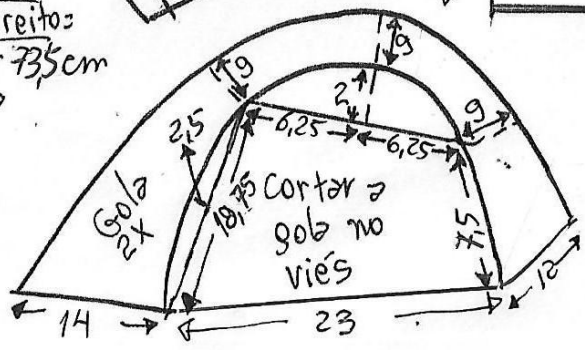
Molde sem margem de costura



Molde para tecido com stretch

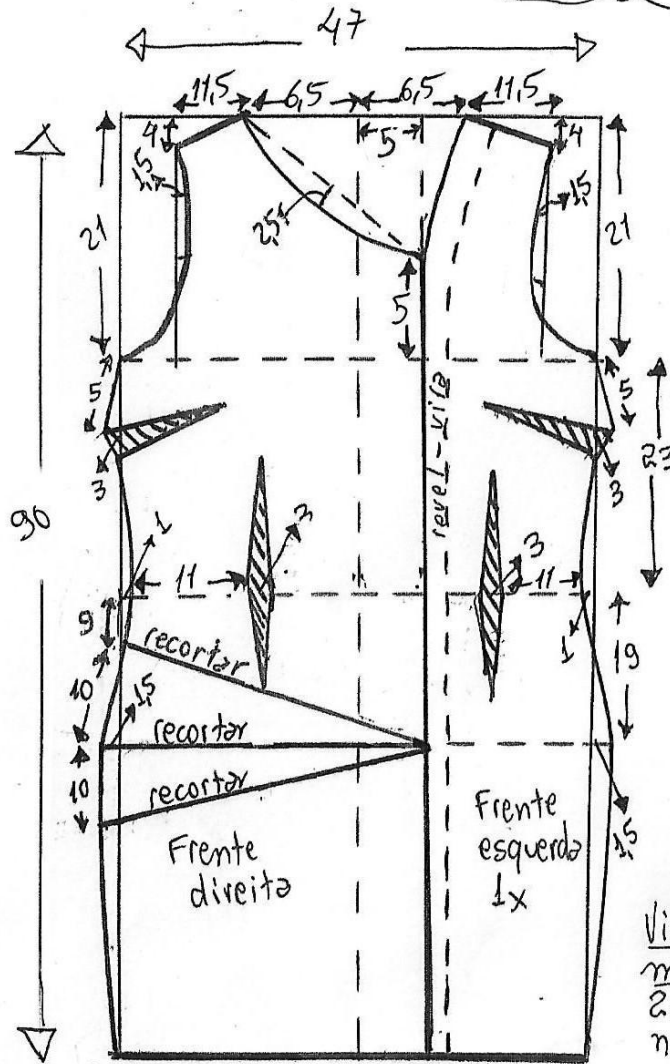


Vira do abotoamento direito: 2cm por 73,5cm na dobra



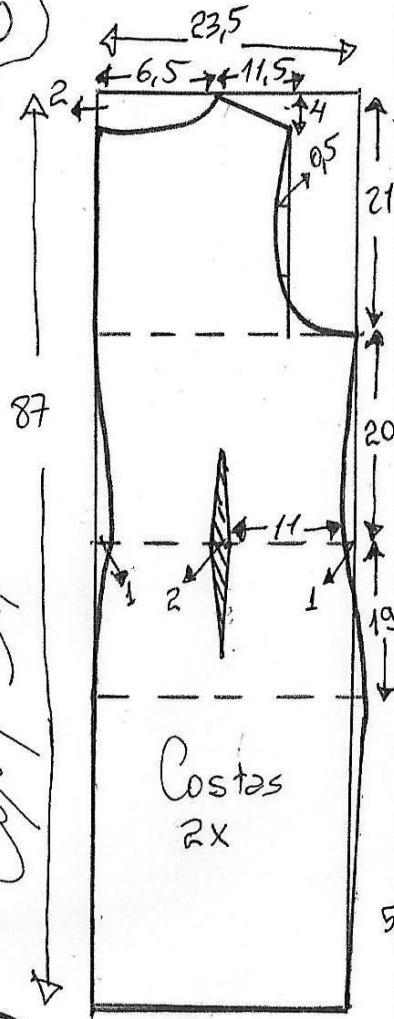
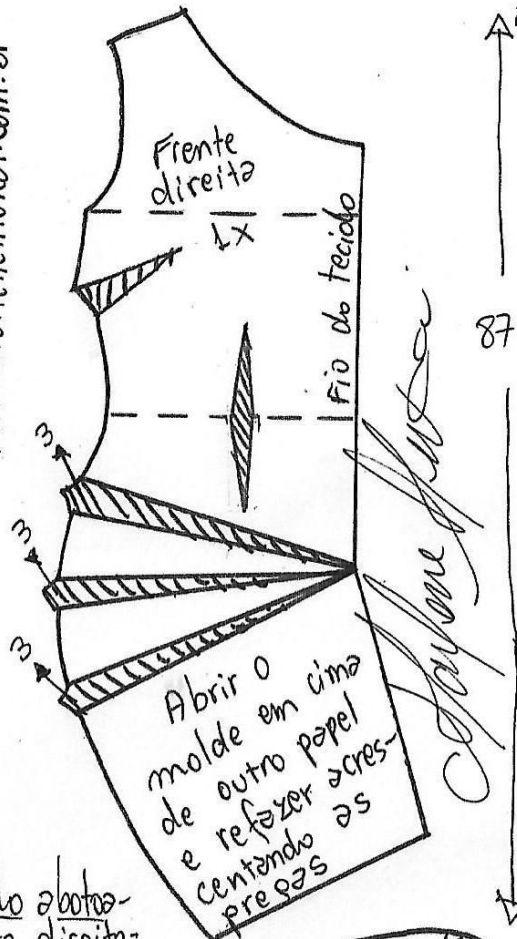
Tecido = 2m de tricoline, popeline, crepe com stretch...  
 Botões = 12  
 Cinto = 4cm por 1,80m na dobra.

# Vestido Camisa manga longa 40

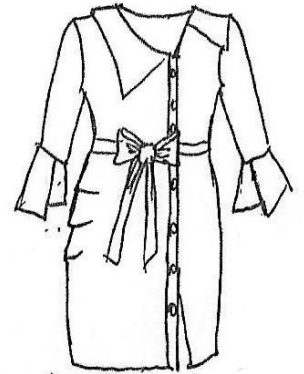


www.martemurki.com.br

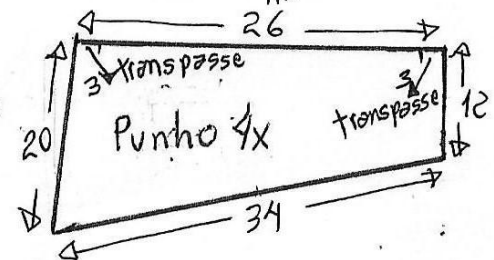
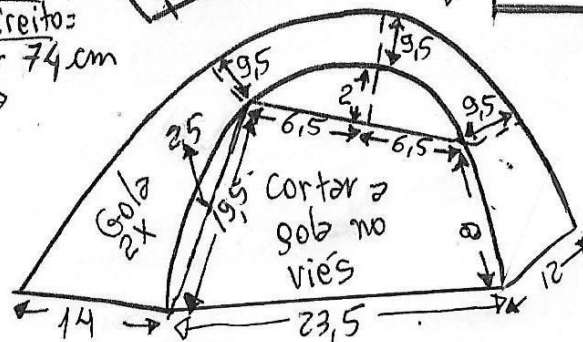
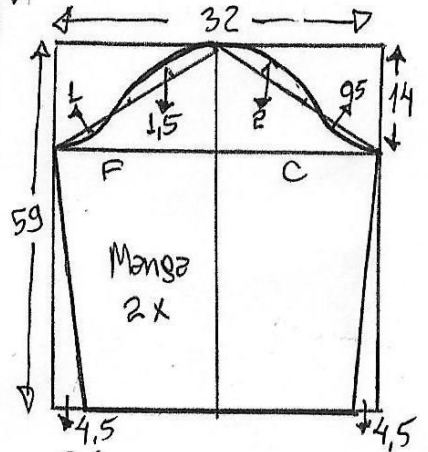
Vira do abotoamento direito:  
2cm por 74cm  
na dobra



Molde sem margem de costura

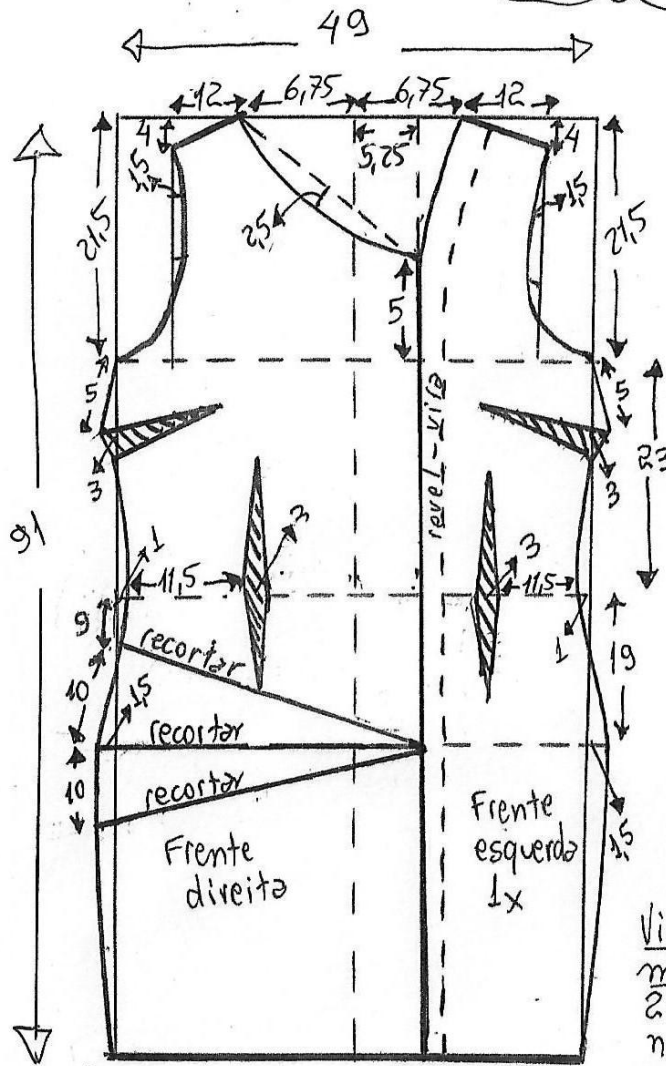


Molde para tecido com stretch



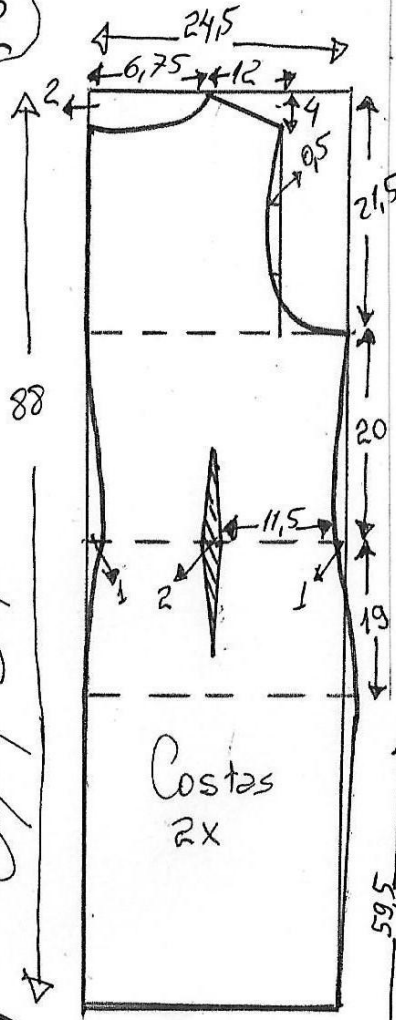
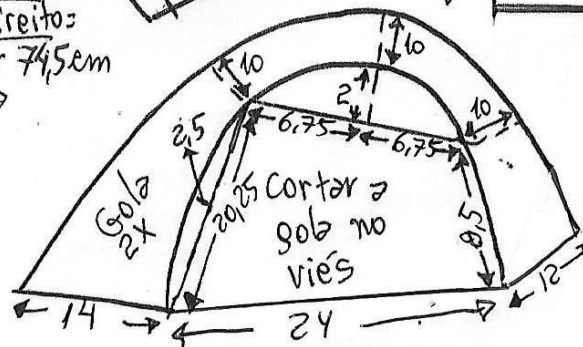
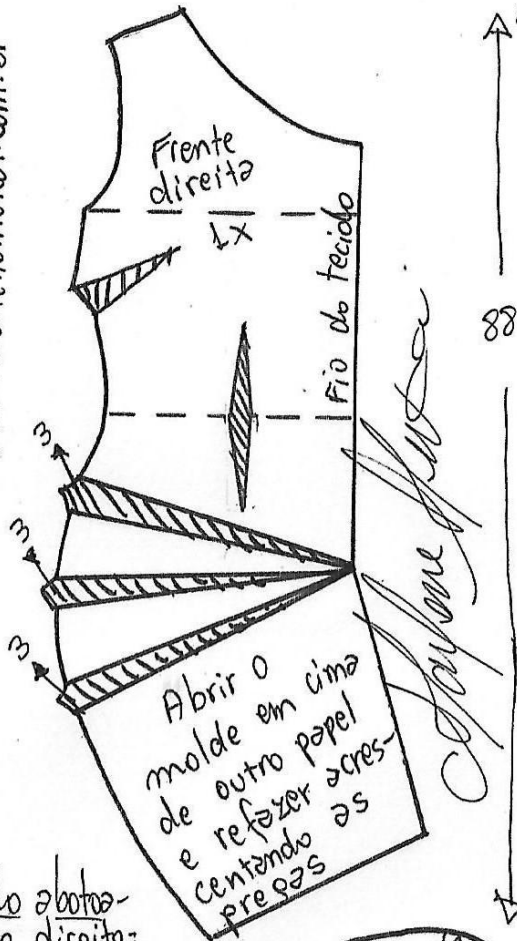
Tecido = 2m de tricoline, popeline, crepe com stretch...  
Botoes = 12  
Cinto = 4cm por 1,80m na dobra.

# Vestido camisa manga longa 42

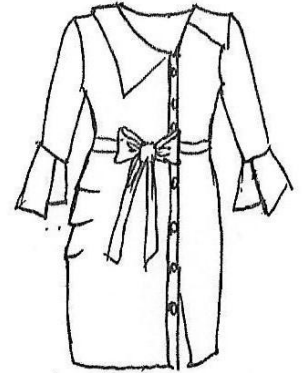


www.merlenemurari.com.br

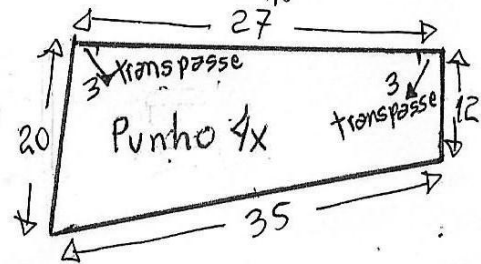
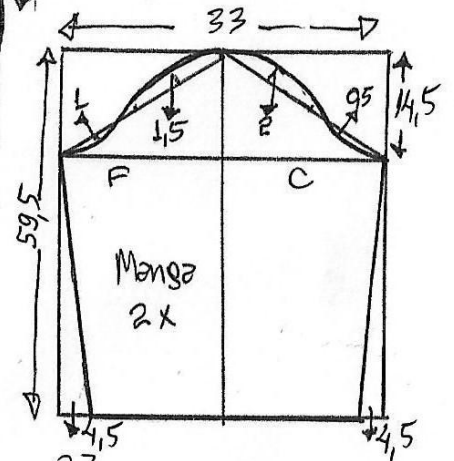
Visa do abotoamento direito:  
2cm por 74,5cm  
na dobra



Molde sem margem de costura

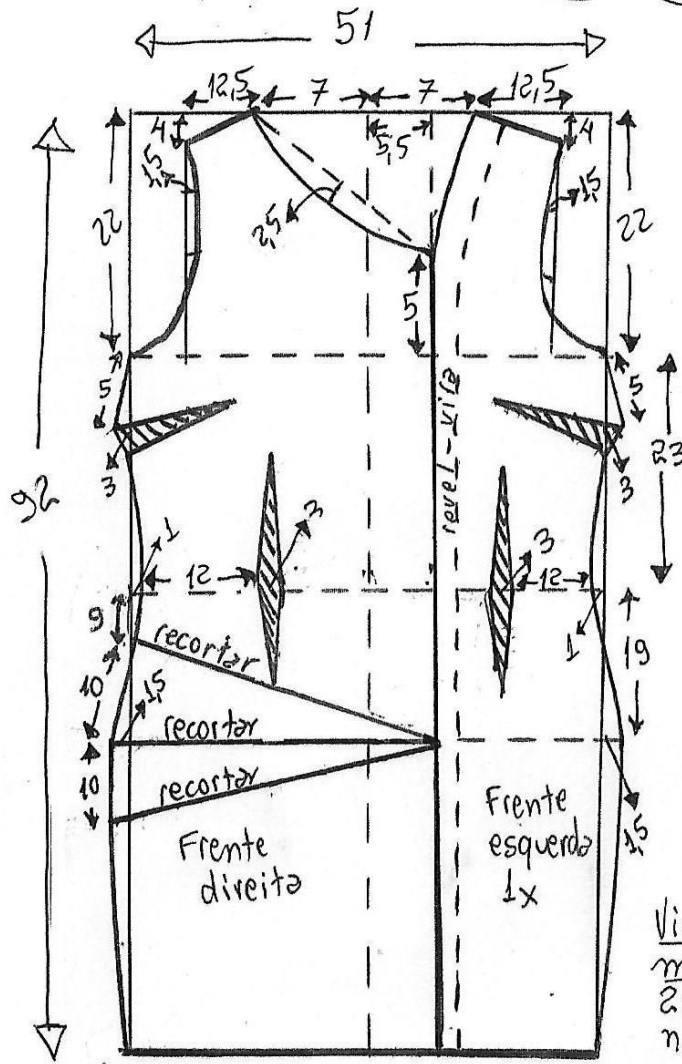


Molde para tecido com stretch

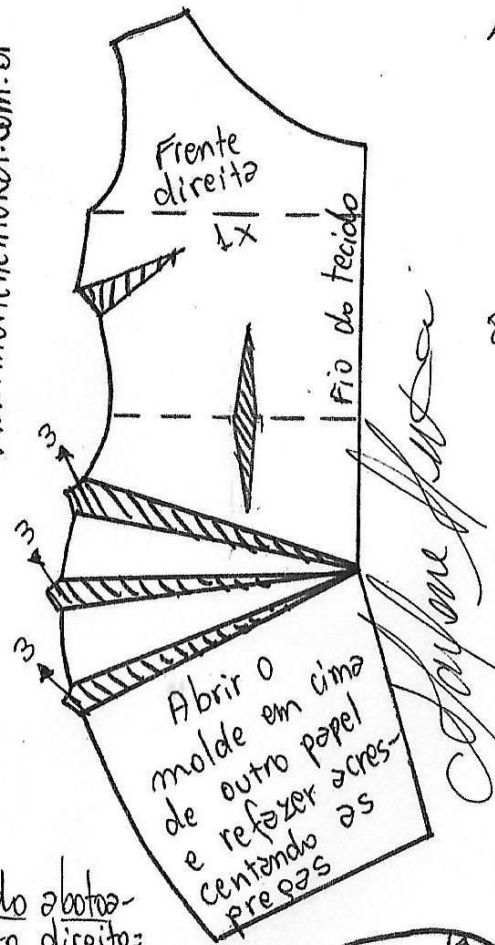


Tecido = 2m de tricoline, popeline, crepe com stretch...  
Botoes = 12  
Cinto = 4cm por 1,80m na dobra.

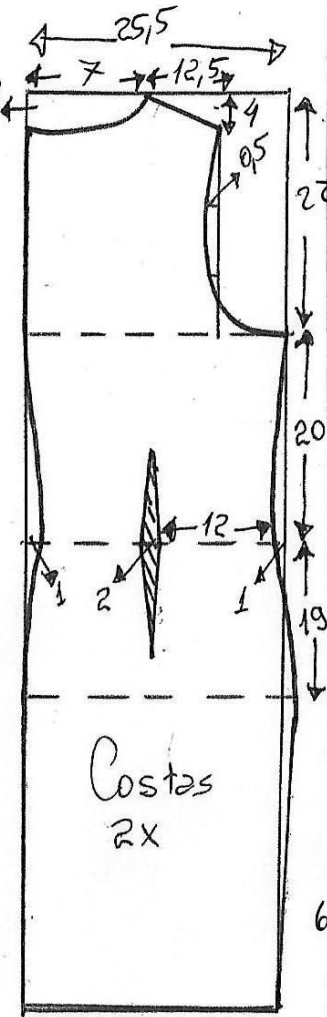
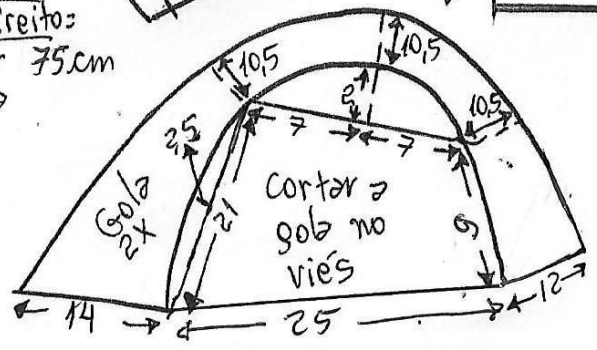
# Vestido camisa manga longa 44



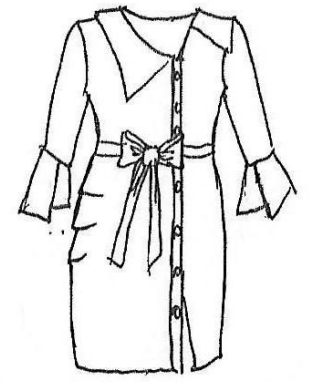
www.merlenemukai.com.br



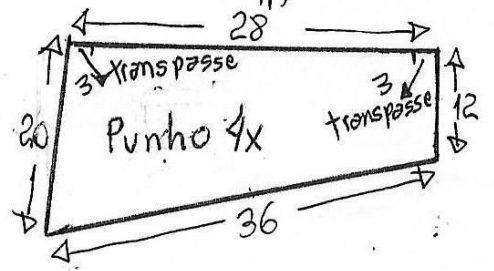
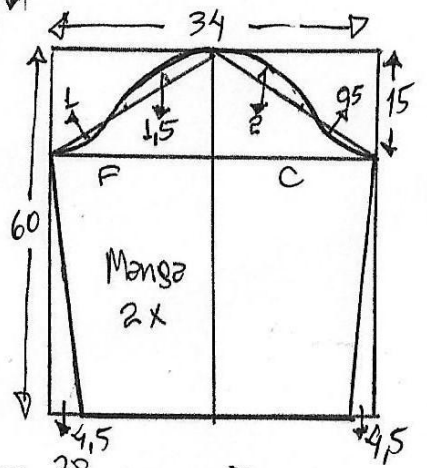
Vira do abotoamento direito: 2cm por 75cm na dobra



Molde sem margem de costura

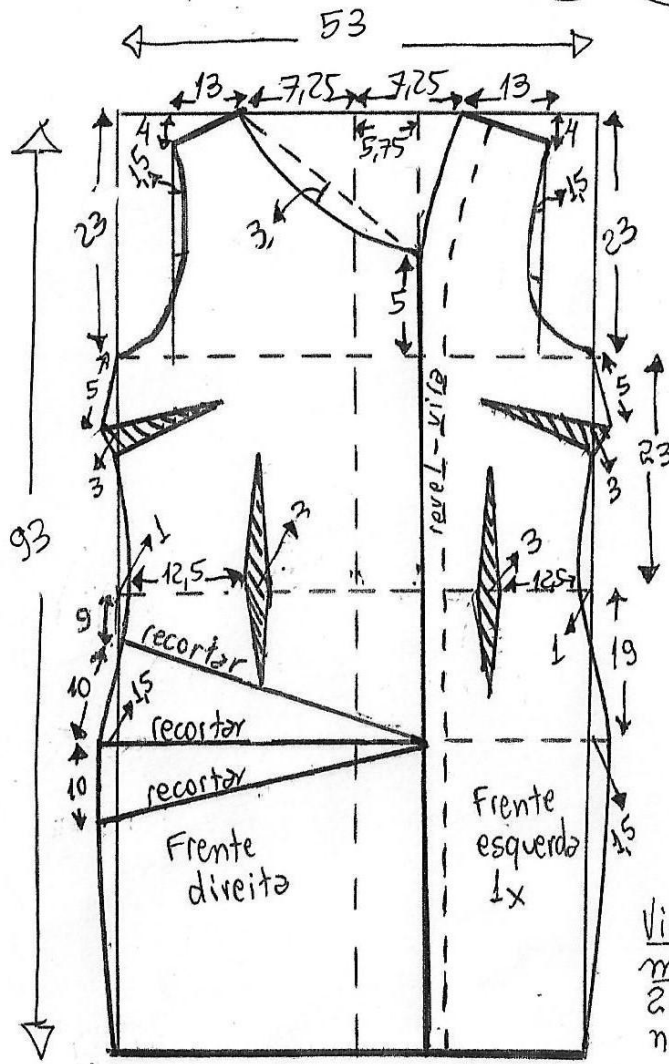


Molde para tecido com stretch

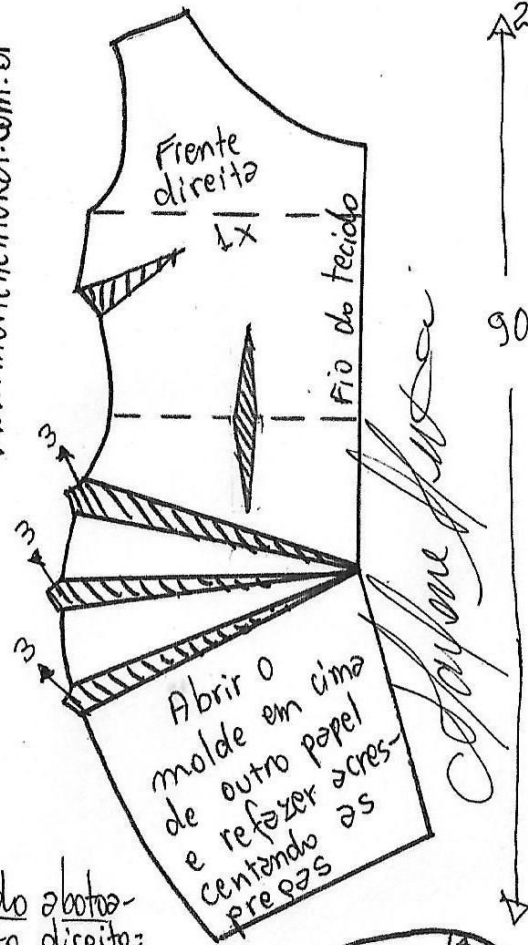


Tecido = 2,10m de tricoline, popeline, crepe com stretch...  
 Botões = 12  
 Cinto = 4cm por 1,80m na dobra.

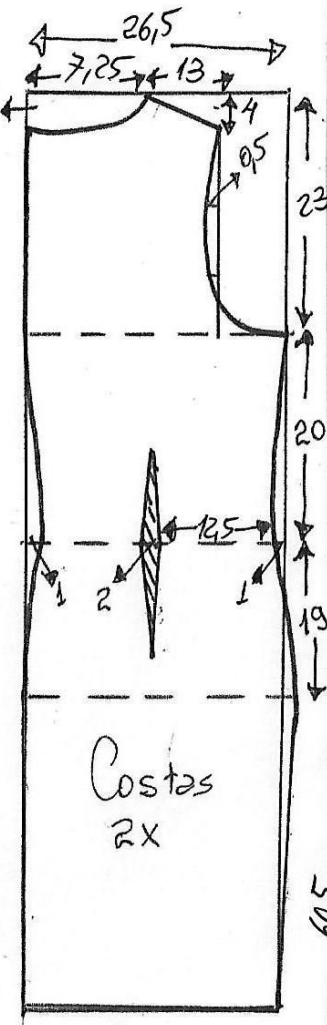
# Vestido camisa manga longa 46



www.merlenemukai.com.br



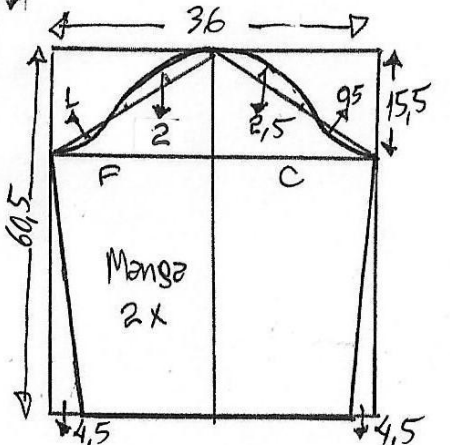
Vira do abotoamento direito:  
2cm por 75cm na dobra



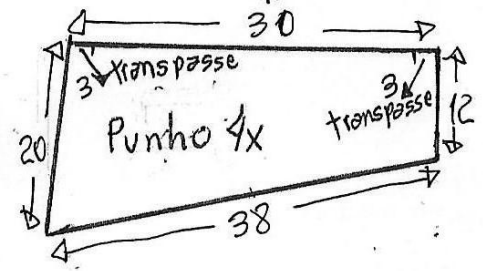
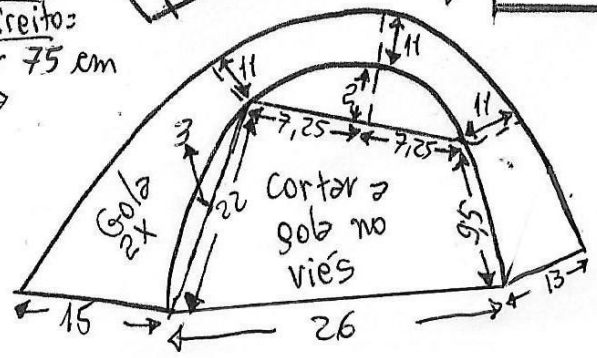
Molde sem margem de costura



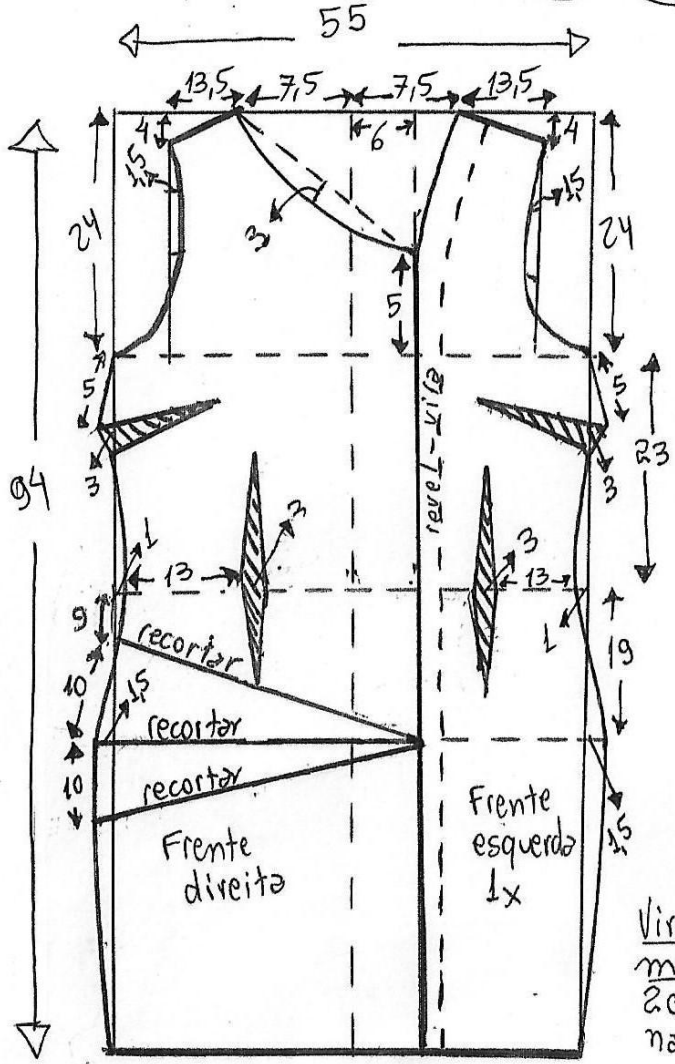
Molde para tecido com stretch



Tecido = 2,10m de tricoline, popeline, crepe com stretch...  
Botoes = 12  
Cinto = 4cm por 1,80m na dobra.

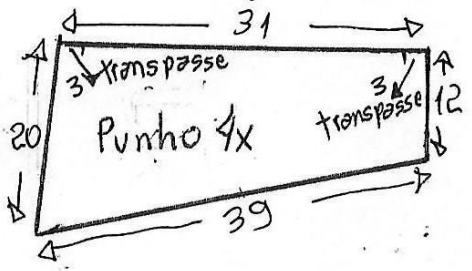
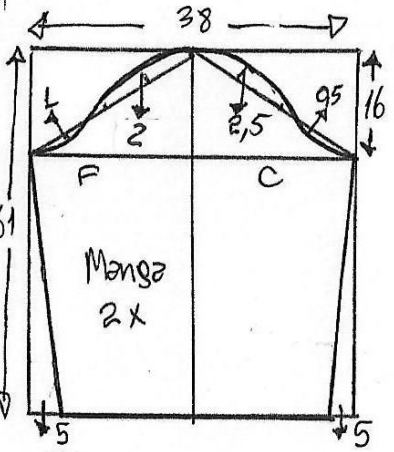
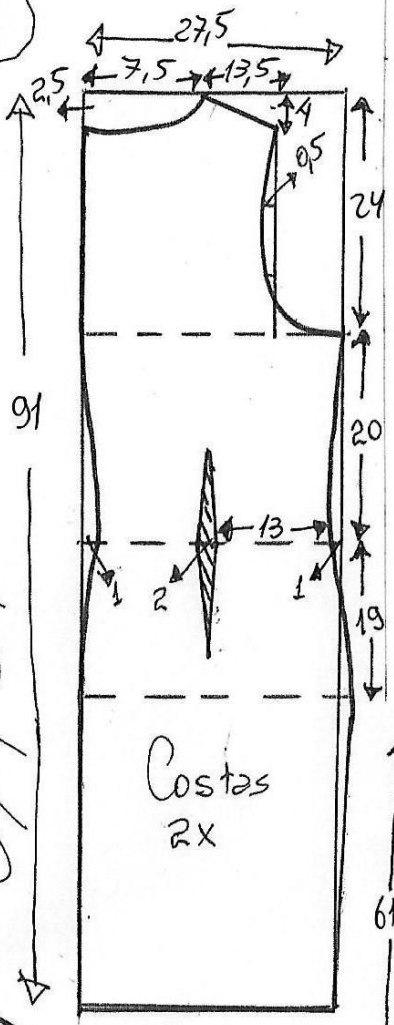
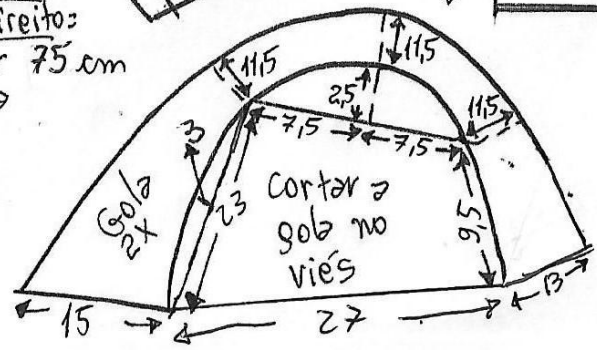
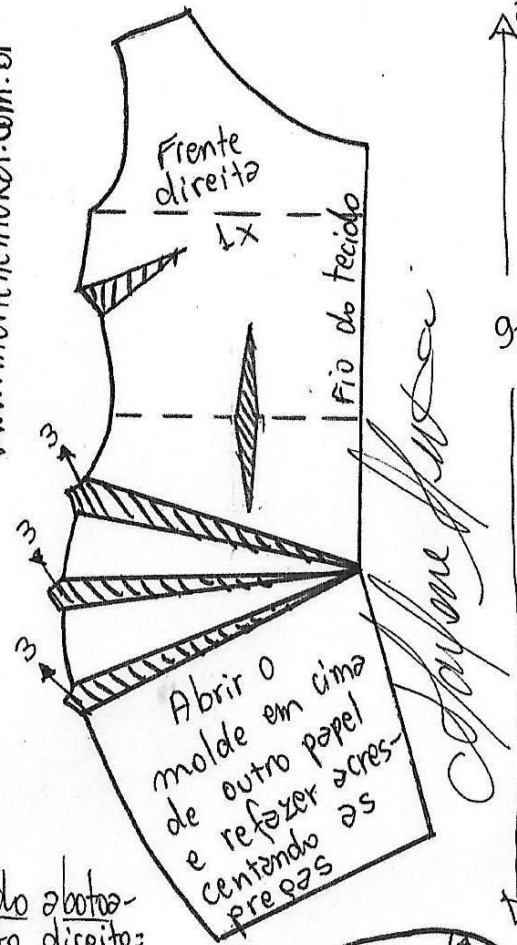


# Vestido camisa manga longa 48



www.merlenemukai.com.br

Vira do abotoamento direito:  
2cm por 75cm na dobra



Molde sem margem de costura

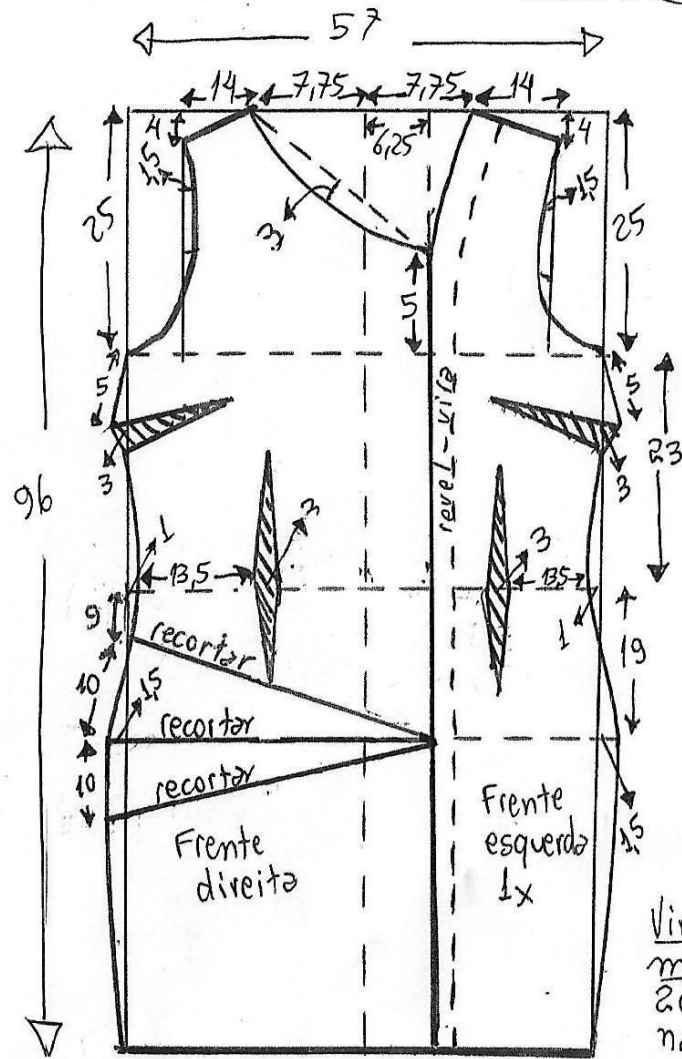


Molde para tecido com stretch

Tecido = 2,10m de tricoline, popeline, crepe com stretch...  
Botões = 12  
Cinto = 4cm por 1,80m na dobra.

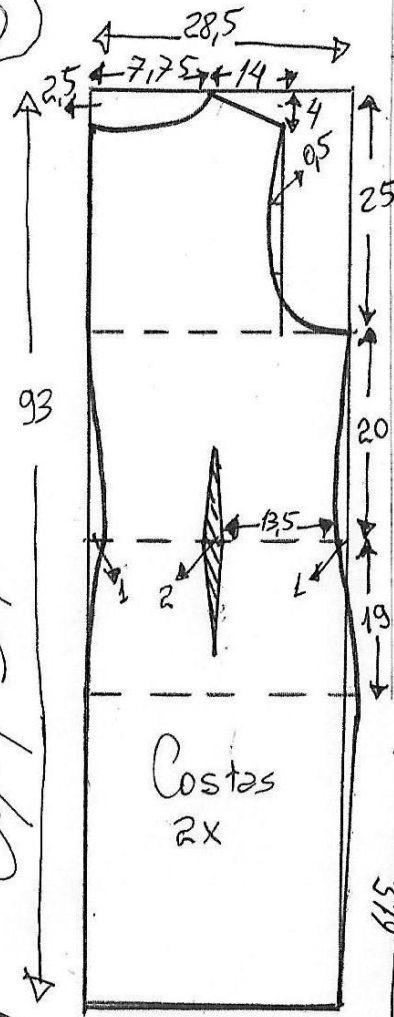
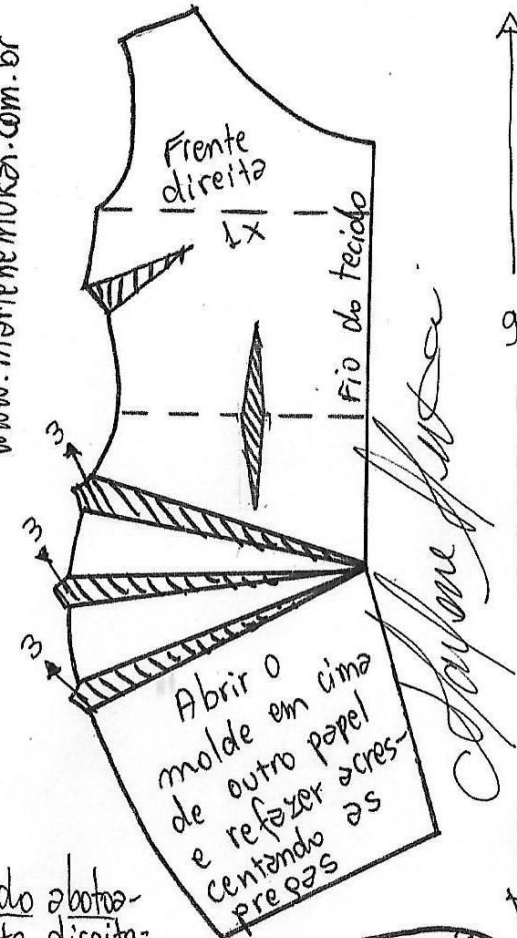


# Vestido Camisa manga longa 50

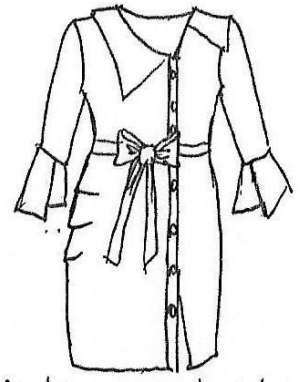


www.marlenebukai.com.br

Vira do abotoamento direito:  
2cm por 76cm na dobra

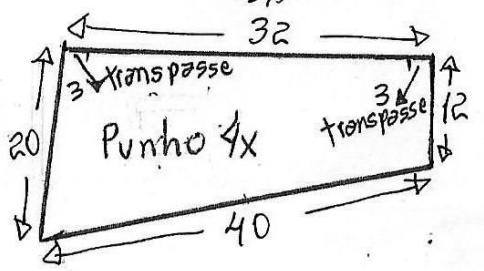
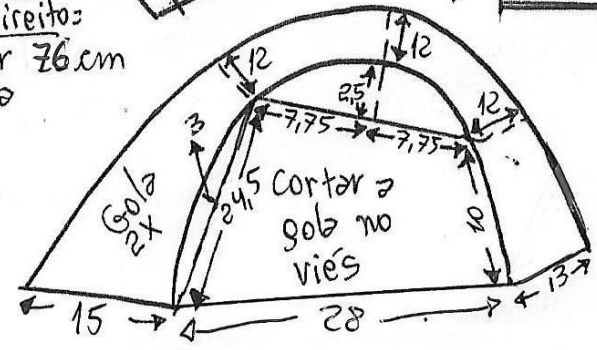


Molde sem margem de costura

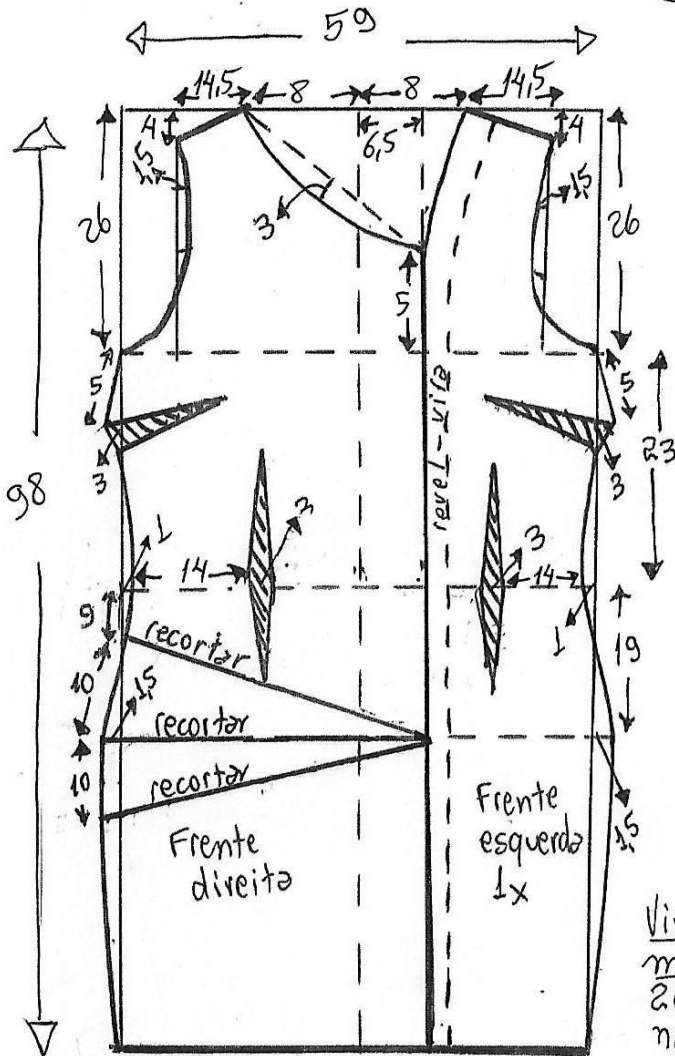


Molde para tecido com stretch

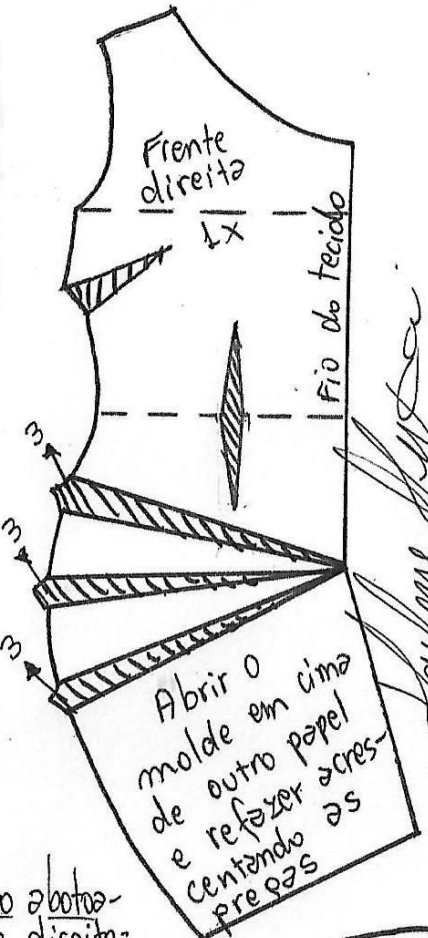
Tecido = 2,20m de tricoline, popeline, crepe com stretch...  
Botões = 12  
Cinto = 4cm por 2m na dobra.



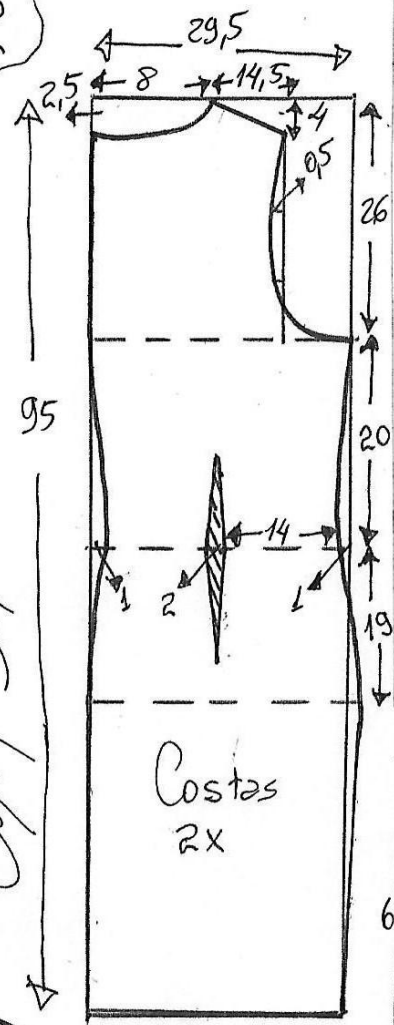
# Vestido Camisa manga longa 52



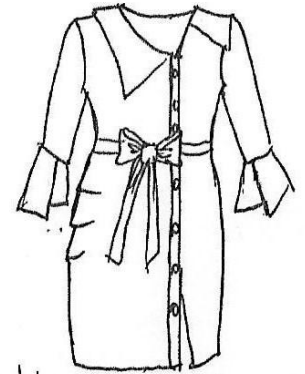
www.moldeenemuka.com.br



Vira do abotoamento direito: 2cm por 77cm na dobra

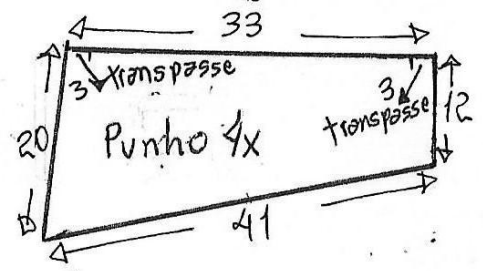
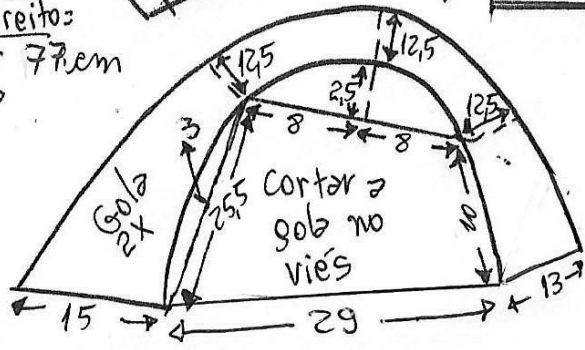


Molde sem margem de costura

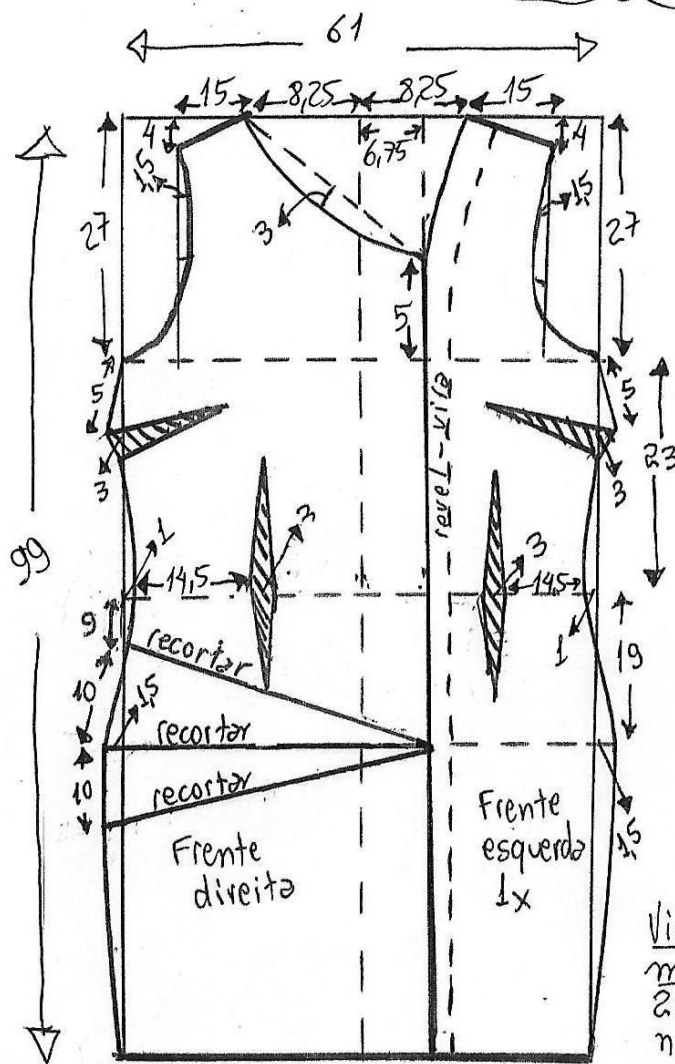


Molde para tecido com stretch

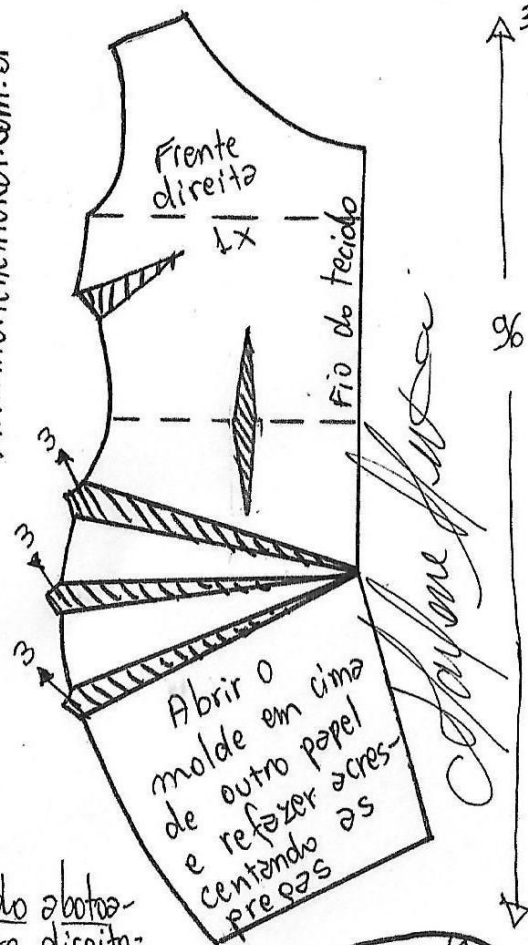
Tecido = 2,40m de tricoline, popeline, crepe com stretch...  
 Botões = 12  
 Cinto = 4cm por 2,1m na dobra.



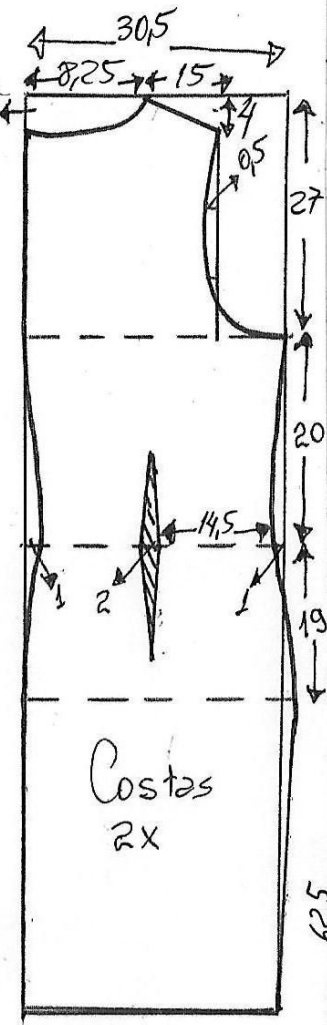
# Vestido Camisa manga longa 54



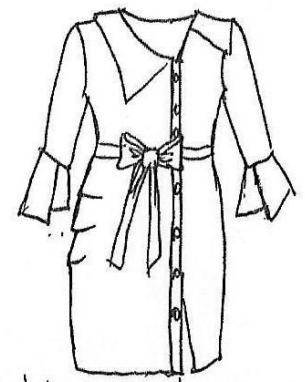
www.marlenemukai.com.br



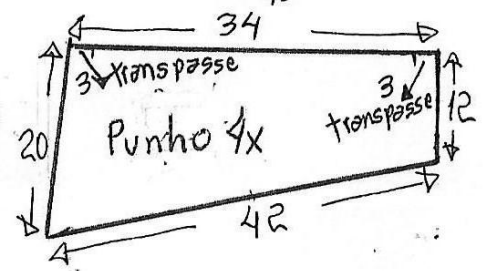
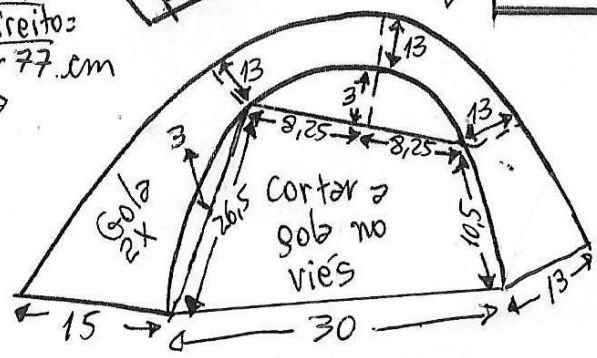
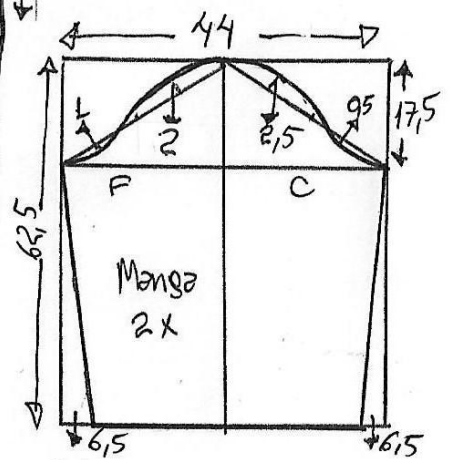
Vira do abotoamento direito: 2cm por 77cm na dobra



Molde sem margem de costura

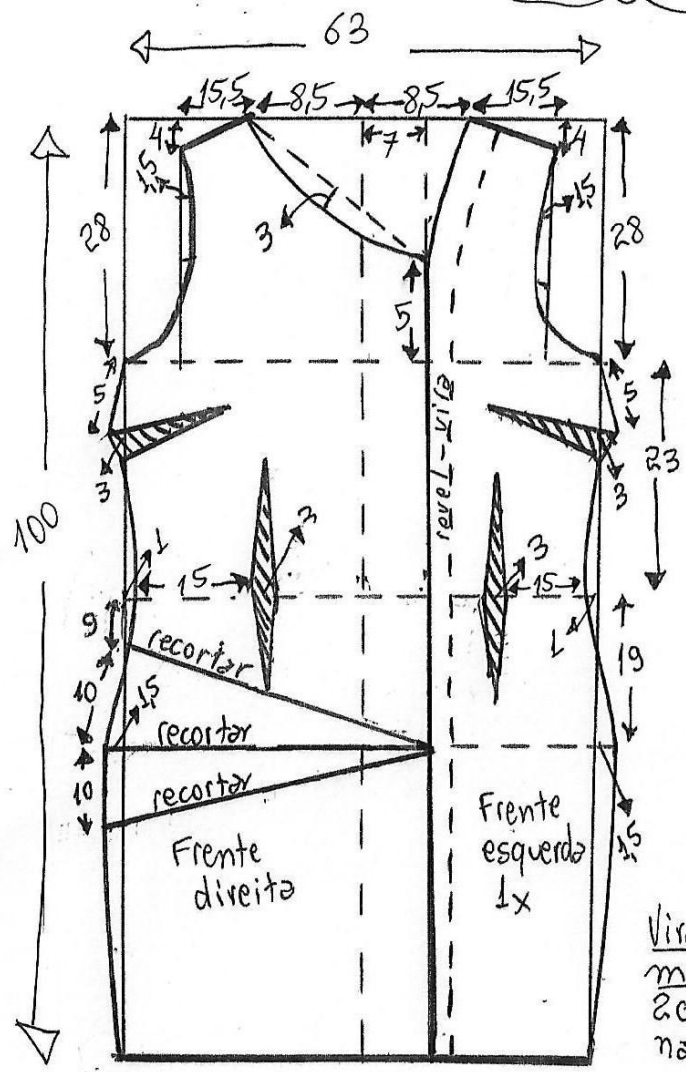


Molde para tecido com stretch

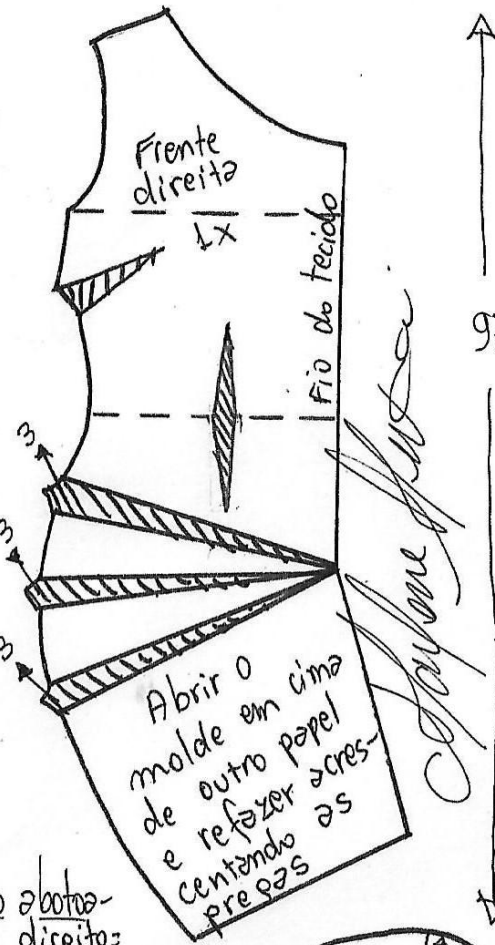


Tecido = 2,40m de tricoline, popeline, crepe com stretch...  
 Botões = 12  
 Cinto = 4cm por 2m na dobra.

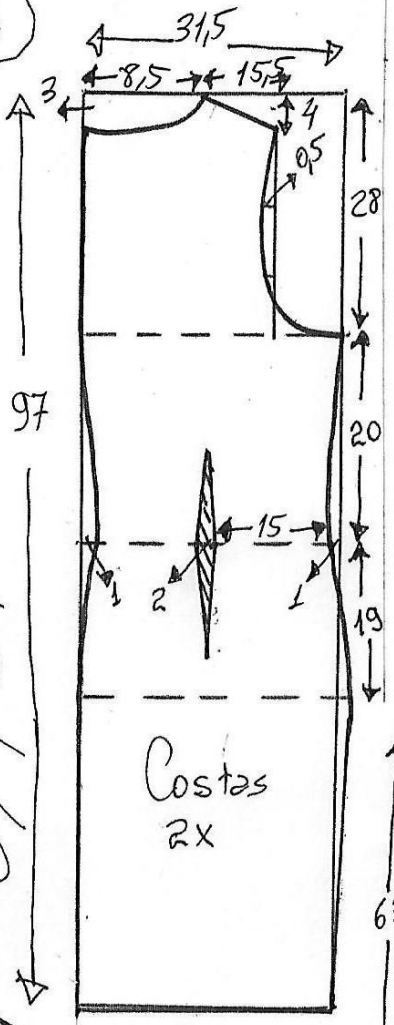
# Vestido camisa manga longa 56



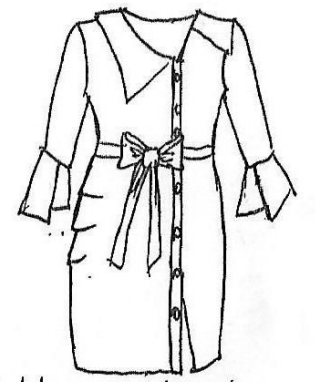
www.merlenemukai.com.br



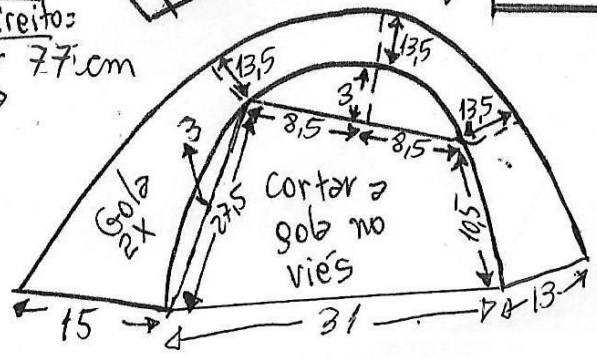
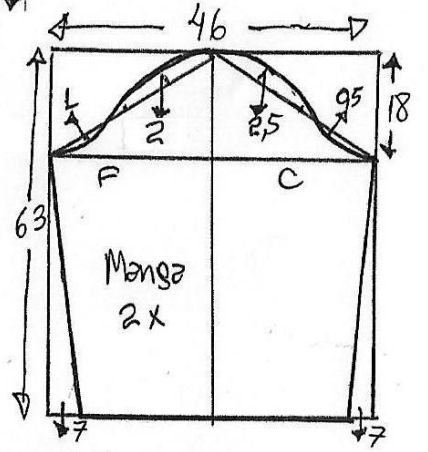
Vira do abotoamento direito: 2cm por 77cm na dobra



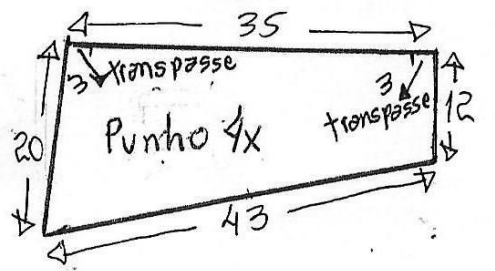
Molde sem margem de costura



Molde para tecido com stretch



Cortar a gola no viés



Tecido = 2,40m de tricoline, popeline, crepe com stretch...  
 Botões = 12  
 Cinto = 4cm por 2m na dobra.