

Artecy

CROSS STITCH

The Little Bridesmaid

Adapted from Artwork by Phillip Richard Morris



Cross Stitch Design by Tereena Clarke.

Completed Size = 147w X 223h Stitches

14 Count, 10.5w X 16h inches

16 Count, 9.5w X 14h inches

18 Count, 8.5w X 12.5h inches

Uses 58 DMC cotton colours. Only full cross stitches are used in this pattern.

Copyright of Artecy Cross Stitch

www.artecy.com
www.artecyshop.com

Pattern Instructions

* This pattern can be worked on any fabric type, colour or count you prefer. To work out the size of the finished article, take the number of stitches wide and high and divide it by the count of your fabric (e.14,16,18 count Aida etc) to get the size in inches. Times it by 2.5 to get centimetres. We have the sizes in inches shown on the previous page. Also leave at least a few inches of fabric around each side of the design to assist in framing. The higher the fabric count the smaller the completed project will be.

* To put the pattern together look in the top and bottom corners. The page numbers in brackets show which page number it joins up to. Page 1 always starts at the top left hand side of the pattern.

* You should begin at the centre of the pattern. To find the centre of the pattern it is just a matter of laying the pattern out and locating the arrows at the top and left hand side of the patterns, they are determined by dividing the stitch numbers wide and high in half. Where the two points meet in the middle, that is the centre.

* The easiest way to stitch this pattern, as it has multiple pages, is to stitch one page at a time.

* We suggest using two strands of floss for each stitch and one strand for backstitching if the pattern calls for it.

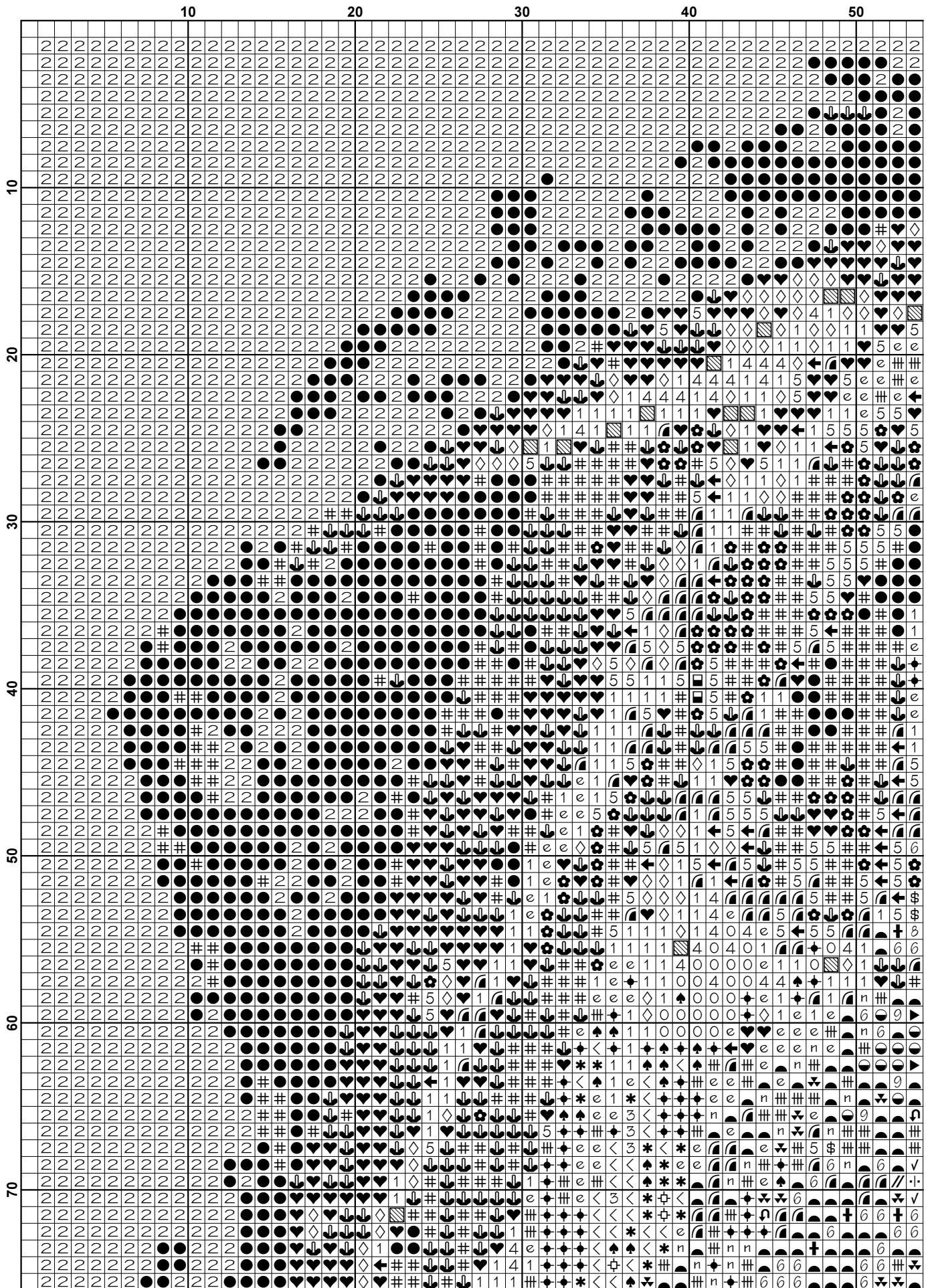
We hope you enjoy stitching our pattern.

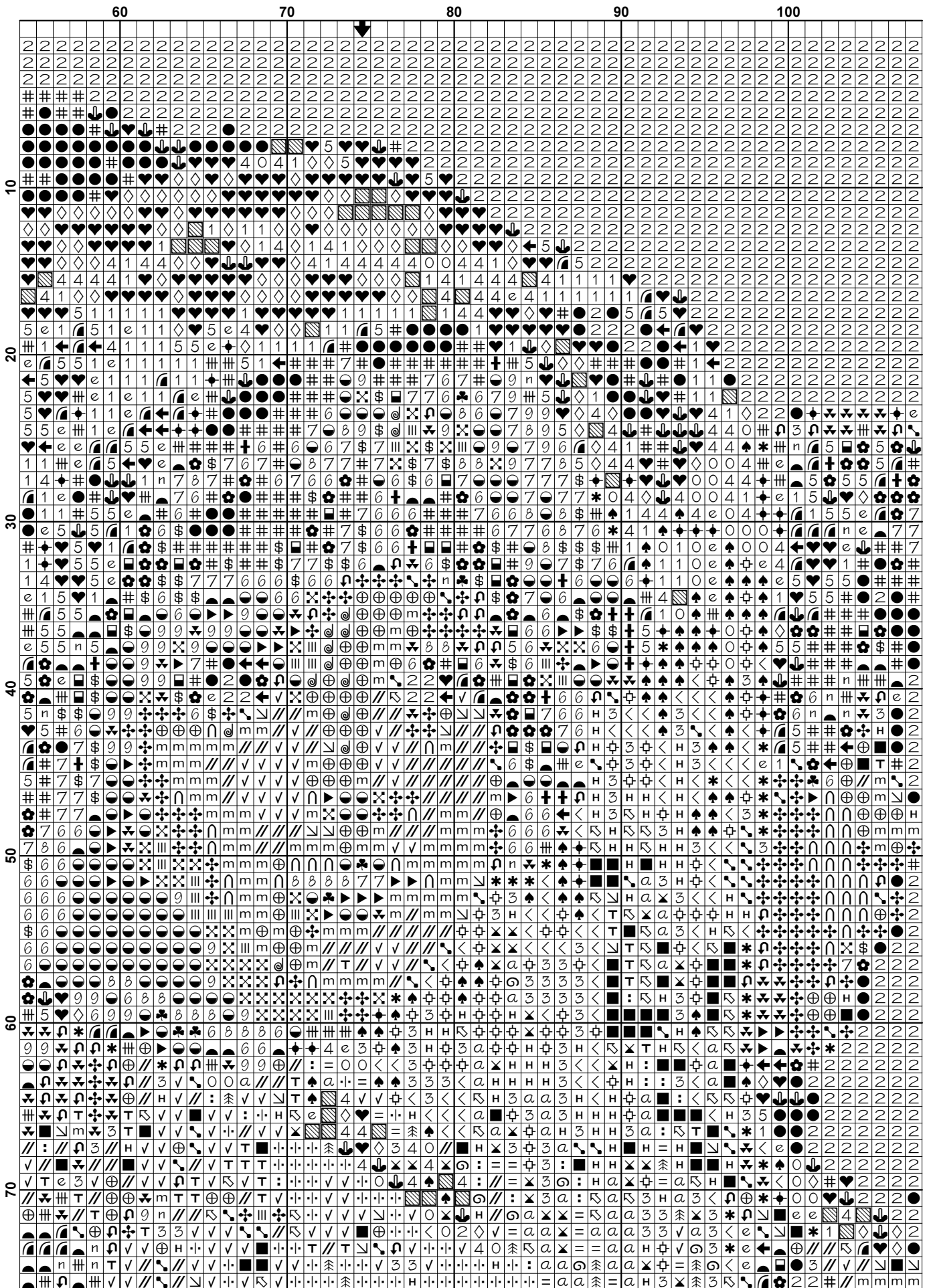
Thanks and Best Wishes
Tereena Clarke

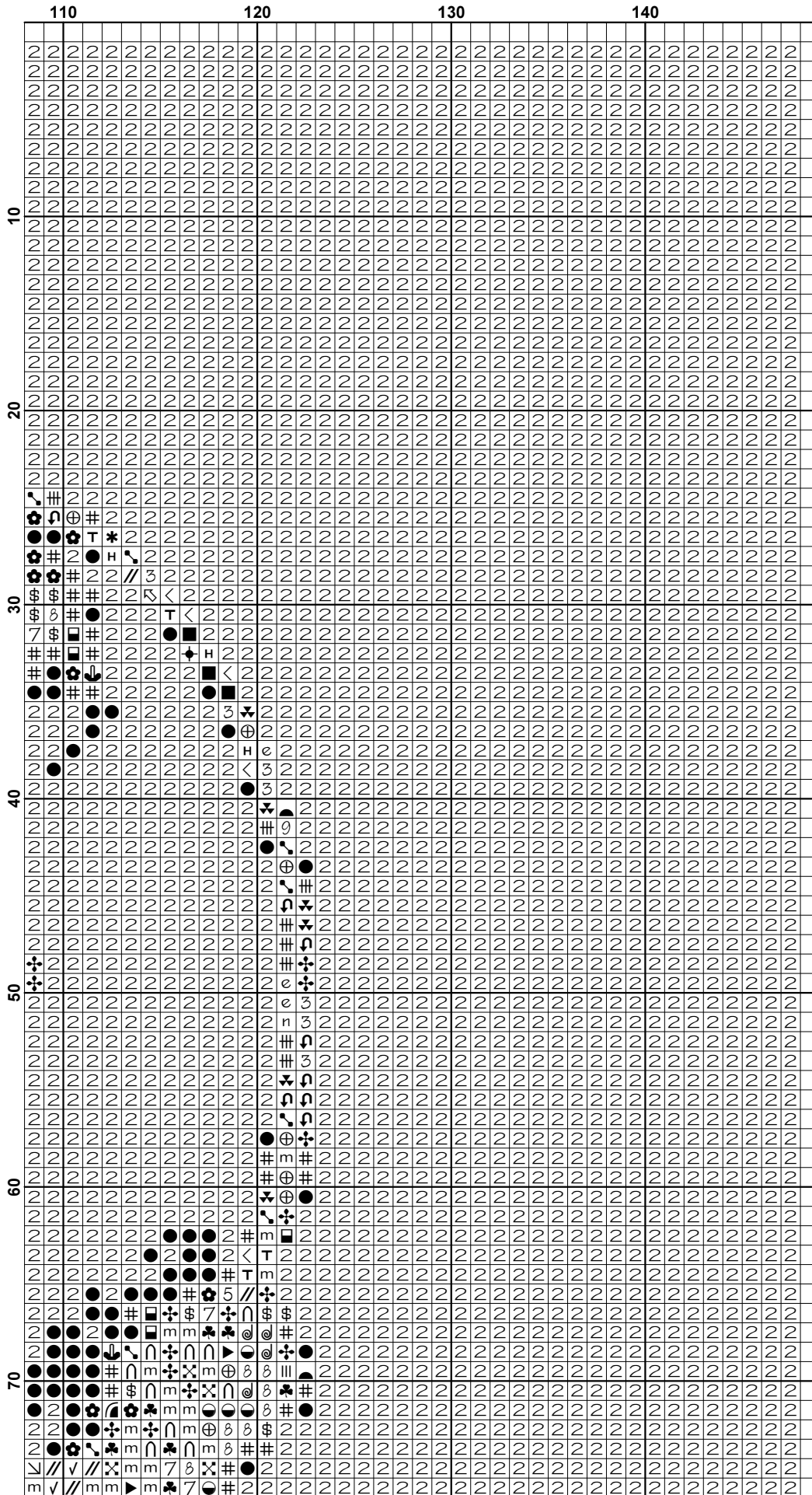
Artecy Cross Stitch
Po Box 3474
Tuggerah, NSW 2259
Australia

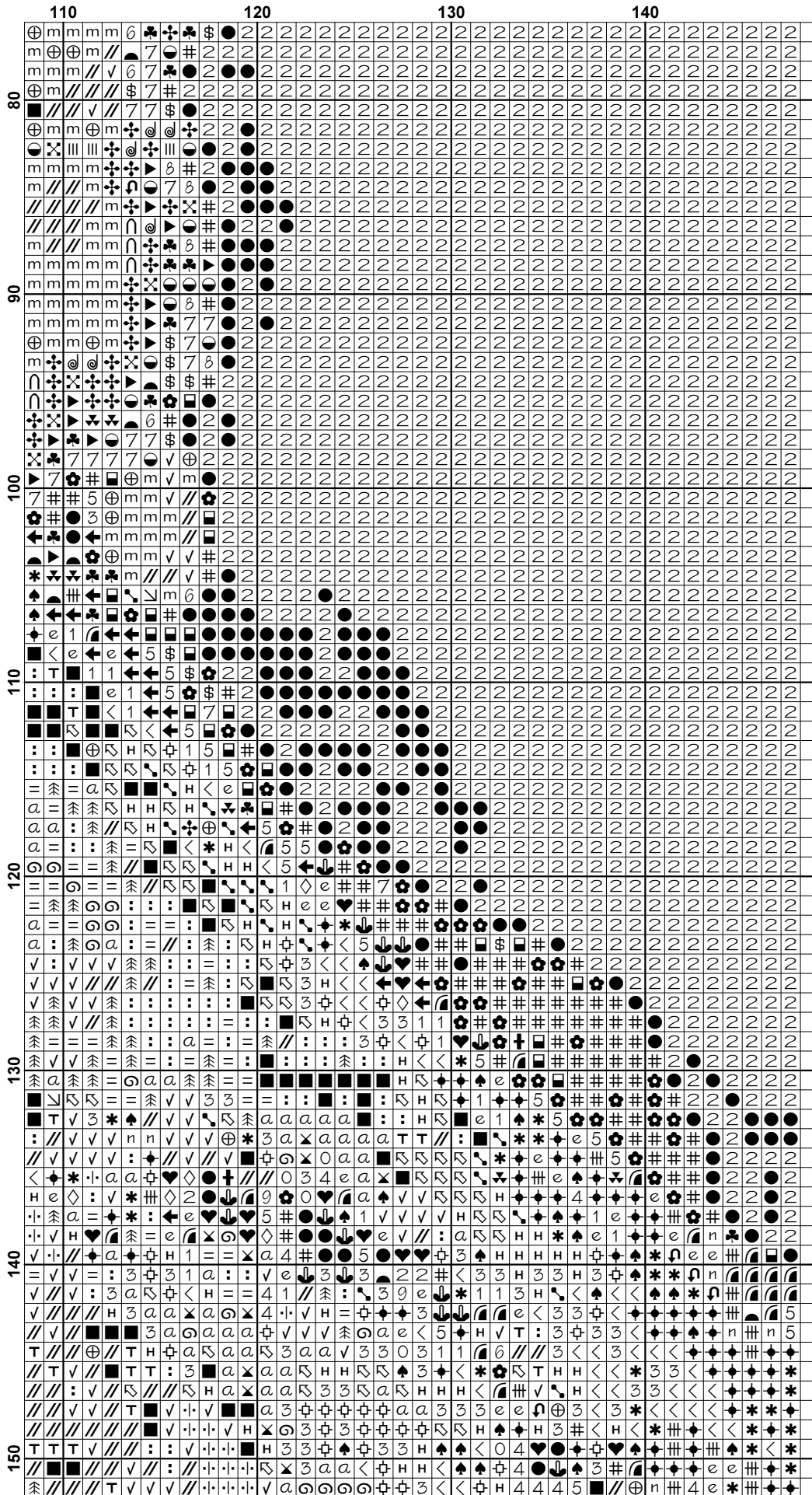
Website: www.artecy.com
Email: artecy@artecy.com or sls@comcen.com.au

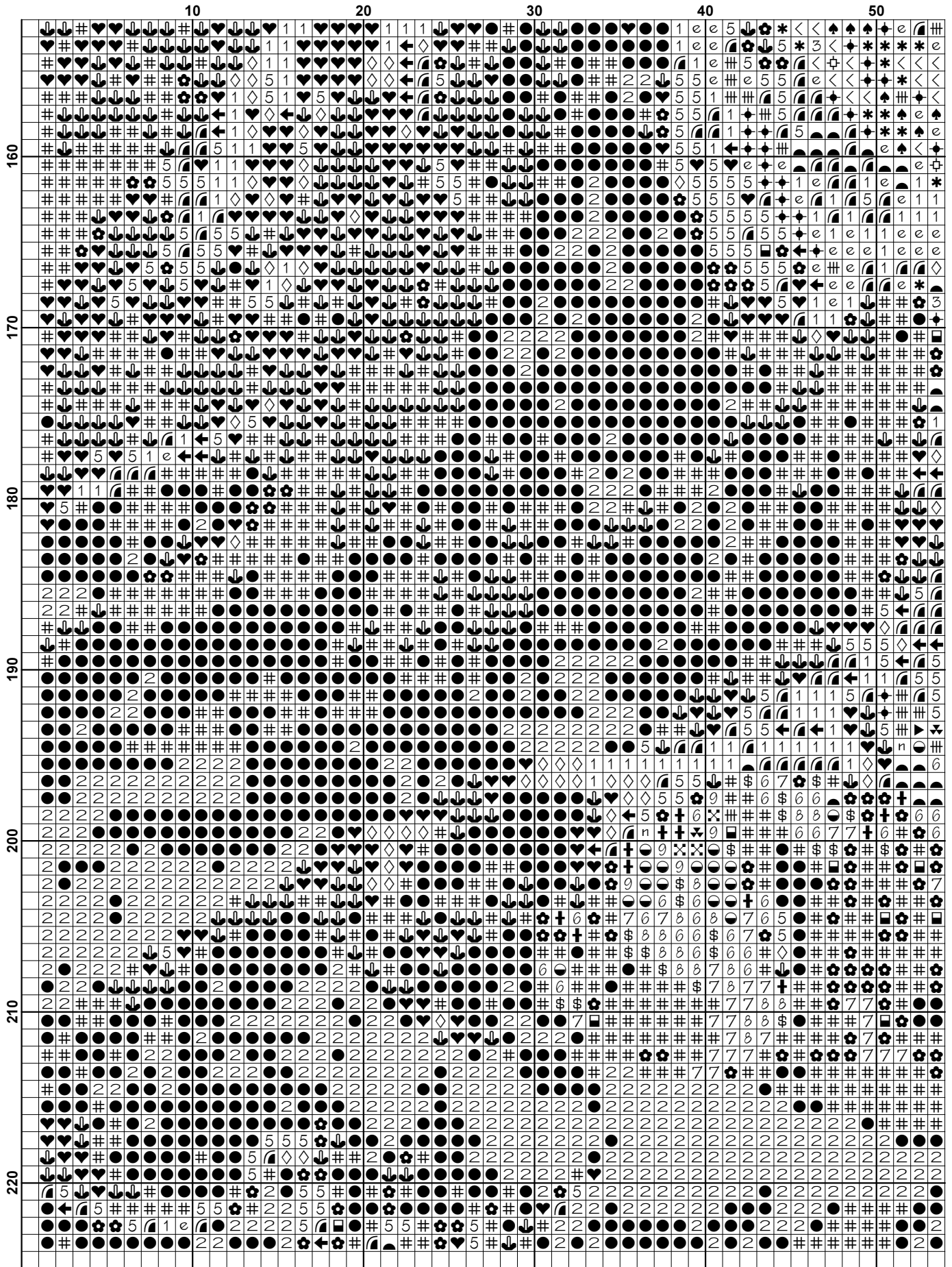
* Patterns are strictly for personal use only. It is against our copyright to make kits for sale from our designs or to sell, copy or redistribute this pattern in any form. You may not upload our patterns to any internet forums or groups or any other website.

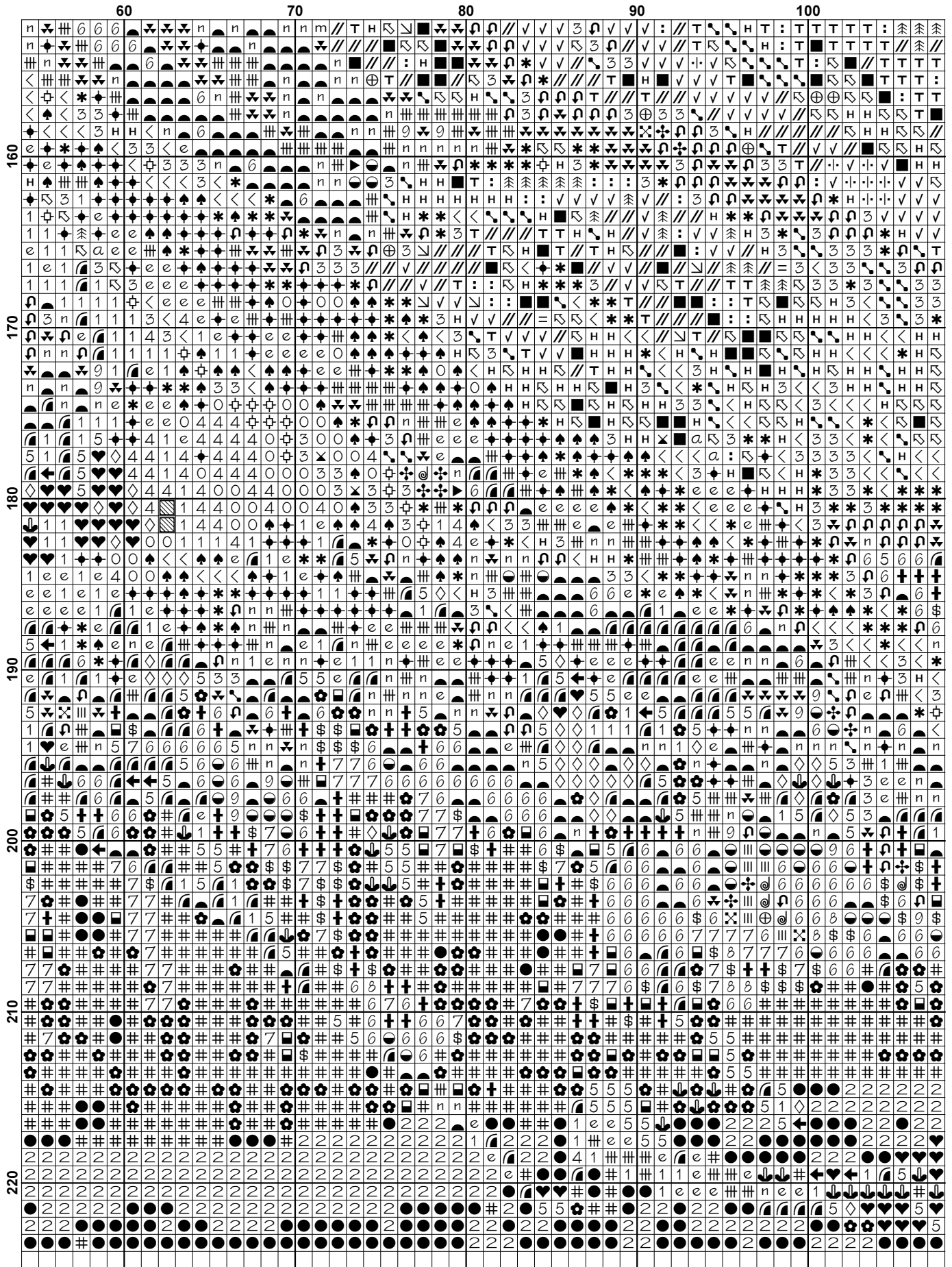


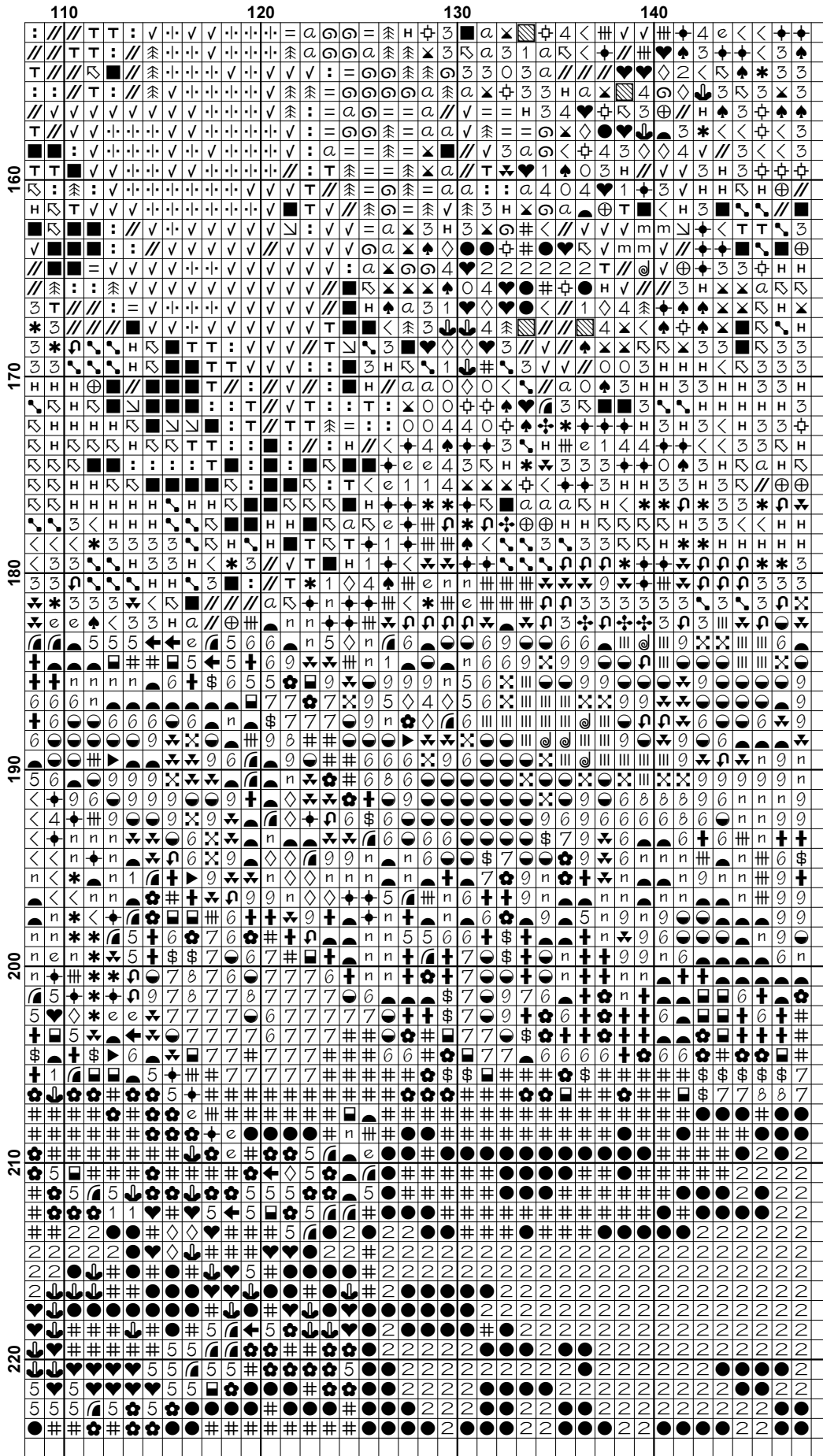
























Pattern Name: The Little Bridesmaid
Designed By: by Phillip Richard Morris
Company: Artecy Cross Stitch
Copyright: Copyright Artecy Cross Stitch. All rights Reserved.
Fabric: Aida 14, White
 147w X 223h Stitches
Size(s): 14 Count, 10-1/2w X 15-7/8h in
 16 Count, 9-1/8w X 13-7/8h in
 18 Count, 8-1/8w X 12-3/8h in

Floss Used for Full Stitches:

Symbol	Strands	Type	Number	Color
	7	2	DMC 300	Mahogany-VY DK
	2	2	DMC 310	Black
	9	2	DMC 370	Mustard-MD
	3	2	DMC 372	Mustard-LT
	●	2	DMC 420	Hazelnut Brown-DK
	\$	2	DMC 433	Brown-MD
		2	DMC 436	Tan
	@	2	DMC 437	Tan-LT
	▨	2	DMC 535	Ash Gray-VY LT
	:	2	DMC 543	Beige Brown-UL VY LT
	⤿	2	DMC 610	Drab Brown-DK
	n	2	DMC 611	Drab Brown
	U	2	DMC 612	Drab Brown-LT
	V	2	DMC 613	Drab Brown-VY LT
	♣	2	DMC 632	Desert Sand-UL VY DK
	◆	2	DMC 640	Beige Gray-VY DK
	<	2	DMC 642	Beige Gray-DK
	a	2	DMC 644	Beige Gray-MD
	4	2	DMC 645	Beaver Gray-VY DK
	O	2	DMC 646	Beaver Gray-DK
	⊕	2	DMC 647	Beaver Gray-MD
	X	2	DMC 648	Beaver Gray-LT
	⊕	2	DMC 738	Tan-VY LT
	U	2	DMC 758	Terra Cotta-VY LT
	■	2	DMC 801	Coffee Brown-DK
	⋈	2	DMC 822	Beige Gray-LT
	+	2	DMC 829	Golden Olive-VY DK
	←	2	DMC 839	Beige Brown-DK
	#	2	DMC 840	Beige Brown-MD
	■	2	DMC 842	Beige Brown-VY LT
	◇	2	DMC 844	Beaver Brown-UL DK
	6	2	DMC 869	Hazelnut Brown-VY DK
	⚙	2	DMC 898	Coffee Brown-VY DK
	#	2	DMC 938	Coffee Brown-UL DK
	m	2	DMC 945	Tawny
	V	2	DMC 950	Desert Sand-LT
	//	2	DMC 951	Tawny-LT
	8	2	DMC 975	Golden Brown-DK
	♥	2	DMC 3021	Brown Gray-VY DK
	➔	2	DMC 3022	Brown Gray-MD
	○	2	DMC 3024	Brown Gray-VY LT
	↵	2	DMC 3031	Mocha Brown-VY DK
	*	2	DMC 3032	Mocha Brown-MD
	=	2	DMC 3033	Mocha Brown-VY LT
	✚	2	DMC 3064	Desert Sand
	●	2	DMC 3371	Black Brown

Copyright Artecy Cross Stitch. All rights Reserved.

Symbol	Strands	Type	Number	Color
	√	2	DMC 3770	Tawny-VY LT
	▶	2	DMC 3772	Desert Sand-VY DK
	T	2	DMC 3774	Desert Sand-VY LT
	5	2	DMC 3781	Mocha Brown-DK
	H	2	DMC 3782	Mocha Brown-LT
	1	2	DMC 3787	Brown Gray-DK
	e	2	DMC 3790	Beige Gray-UL DK
	✕	2	DMC 3828	Hazelnut Brown
	◐	2	DMC 3862	Mocha Beige-DK
	◑	2	DMC 3863	Mocha Beige-MD
	◒	2	DMC 3864	Mocha Beige-LT
	·+	2	DMC 3865	Winter White

Usage Summary

Strands Per Skein: 6

Skein Length: 313.0 in

Type	Number	Full	Half	Quarter	Petite	Back(in)	Str(in)	Spec(in)	French	Bead	Skein Est.
DMC 300	300	275	0	0	0	0.0	0.0	0.0	0	0	1.000
DMC 310	310	7347	0	0	0	0.0	0.0	0.0	0	0	4.000
DMC 370	370	169	0	0	0	0.0	0.0	0.0	0	0	1.000
DMC 372	372	545	0	0	0	0.0	0.0	0.0	0	0	1.000
DMC 420	420	391	0	0	0	0.0	0.0	0.0	0	0	1.000
DMC 433	433	276	0	0	0	0.0	0.0	0.0	0	0	1.000
DMC 436	436	59	0	0	0	0.0	0.0	0.0	0	0	1.000
DMC 437	437	42	0	0	0	0.0	0.0	0.0	0	0	1.000
DMC 535	535	150	0	0	0	0.0	0.0	0.0	0	0	1.000
DMC 543	543	290	0	0	0	0.0	0.0	0.0	0	0	1.000
DMC 610	610	621	0	0	0	0.0	0.0	0.0	0	0	1.000
DMC 611	611	361	0	0	0	0.0	0.0	0.0	0	0	1.000
DMC 612	612	386	0	0	0	0.0	0.0	0.0	0	0	1.000
DMC 613	613	328	0	0	0	0.0	0.0	0.0	0	0	1.000
DMC 632	632	115	0	0	0	0.0	0.0	0.0	0	0	1.000
DMC 640	640	638	0	0	0	0.0	0.0	0.0	0	0	1.000
DMC 642	642	445	0	0	0	0.0	0.0	0.0	0	0	1.000
DMC 644	644	216	0	0	0	0.0	0.0	0.0	0	0	1.000
DMC 645	645	289	0	0	0	0.0	0.0	0.0	0	0	1.000
DMC 646	646	190	0	0	0	0.0	0.0	0.0	0	0	1.000
DMC 647	647	218	0	0	0	0.0	0.0	0.0	0	0	1.000
DMC 648	648	89	0	0	0	0.0	0.0	0.0	0	0	1.000
DMC 738	738	178	0	0	0	0.0	0.0	0.0	0	0	1.000
DMC 758	758	87	0	0	0	0.0	0.0	0.0	0	0	1.000
DMC 801	801	232	0	0	0	0.0	0.0	0.0	0	0	1.000
DMC 822	822	182	0	0	0	0.0	0.0	0.0	0	0	1.000
DMC 829	829	196	0	0	0	0.0	0.0	0.0	0	0	1.000
DMC 839	839	167	0	0	0	0.0	0.0	0.0	0	0	1.000
DMC 840	840	474	0	0	0	0.0	0.0	0.0	0	0	1.000
DMC 842	842	347	0	0	0	0.0	0.0	0.0	0	0	1.000
DMC 844	844	518	0	0	0	0.0	0.0	0.0	0	0	1.000
DMC 869	869	695	0	0	0	0.0	0.0	0.0	0	0	1.000
DMC 898	898	718	0	0	0	0.0	0.0	0.0	0	0	1.000
DMC 938	938	2253	0	0	0	0.0	0.0	0.0	0	0	1.000
DMC 945	945	309	0	0	0	0.0	0.0	0.0	0	0	1.000
DMC 950	950	62	0	0	0	0.0	0.0	0.0	0	0	1.000
DMC 951	951	673	0	0	0	0.0	0.0	0.0	0	0	1.000
DMC 975	975	114	0	0	0	0.0	0.0	0.0	0	0	1.000
DMC 3021	3021	1139	0	0	0	0.0	0.0	0.0	0	0	1.000
DMC 3022	3022	376	0	0	0	0.0	0.0	0.0	0	0	1.000
DMC 3024	3024	66	0	0	0	0.0	0.0	0.0	0	0	1.000
DMC 3031	3031	1157	0	0	0	0.0	0.0	0.0	0	0	1.000
DMC 3032	3032	347	0	0	0	0.0	0.0	0.0	0	0	1.000
DMC 3033	3033	133	0	0	0	0.0	0.0	0.0	0	0	1.000
DMC 3064	3064	267	0	0	0	0.0	0.0	0.0	0	0	1.000
DMC 3371	3371	2740	0	0	0	0.0	0.0	0.0	0	0	2.000
DMC 3770	3770	986	0	0	0	0.0	0.0	0.0	0	0	1.000
DMC 3772	3772	76	0	0	0	0.0	0.0	0.0	0	0	1.000
DMC 3774	3774	254	0	0	0	0.0	0.0	0.0	0	0	1.000
DMC 3781	3781	566	0	0	0	0.0	0.0	0.0	0	0	1.000
DMC 3782	3782	425	0	0	0	0.0	0.0	0.0	0	0	1.000
DMC 3787	3787	724	0	0	0	0.0	0.0	0.0	0	0	1.000

Type	Number	Full	Half	Quarter	Petite	Back(in)	Str(in)	Spec(in)	French	Bead	Skein Est.
■ DMC	3790	509	0	0	0	0.0	0.0	0.0	0	0	1.000
■ DMC	3828	110	0	0	0	0.0	0.0	0.0	0	0	1.000
■ DMC	3862	932	0	0	0	0.0	0.0	0.0	0	0	1.000
■ DMC	3863	427	0	0	0	0.0	0.0	0.0	0	0	1.000
■ DMC	3864	312	0	0	0	0.0	0.0	0.0	0	0	1.000
□ DMC	3865	590	0	0	0	0.0	0.0	0.0	0	0	1.000