



TAIGA - "ROYAL STARLING" EDITION



A while ago I got the opportunity to compose a Scheepjes Catona yarn kit with eight of my favorite colours for [Favoritgarner](#). The yarn kit, that I named "Royal Starling", consists of eight skeins of Scheepjes Catona 50 g one of each colour 173, 179, 240, 247, 282, 383, 393 and 394.

This is a description how to make the Taiga Shawl "Royal Starling" edition that has another border than the original Taiga shawl, and also a row by row colour guide.

What you need:

Yarn, Scheepjes Catona "Royal Starling" yarn kit from [Favoritgarner](#).

Crochet hook 4.0 mm

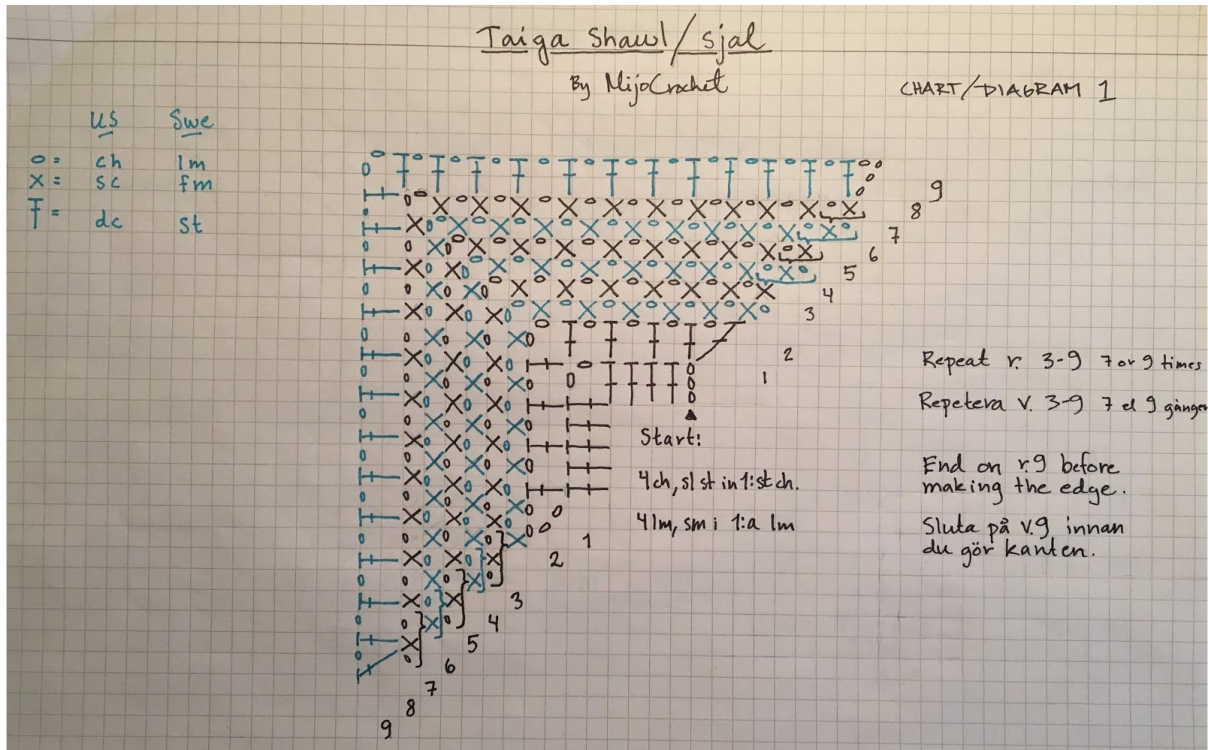
Darning needle

(Glass beads for the tassels)

My shawl sizes 150 x 73 cm (tassels not included).



Start to make the shawls "body" according to the chart below. Row 3-9 is repeated **10 times**. Use the colour guide on the next side.





- r 1, 179
- r 2, 394
- _____
- r 3-4, 282
- r 5-6, 240
- r 7, 179
- r 8, 383
- r 9, 393
- _____
- r 10-11, 247
- r 12-13, 173
- r 14, 179
- r 15, 383
- r 16, 240
- _____
- r 17-18, 282
- r 19-20, 394
- r 21, 383
- r 22, 179
- r 23, 173
- _____
- r 24-25, 247
- r 26-27, 393
- r 28, 383
- r 29, 179
- r 30, 394
- _____
- r 31-32, 282
- r 33-34, 240
- r 35, 179
- r 36, 383
- r 37, 393
- _____
- r 38-39, 247
- r 40-41, 173
- r 42, 179
- r 43, 383
- r 44, 240
- _____



- r 45-46, 282
- r 47-48, 394
- r 49, 383
- r 50, 179
- r 51, 173
-
- r 52-53, 247
- r 54-55, 393
- r 56, 383
- r 57, 179
- r 58, 394
-
- r 59-60, 282
- r 61-62, 240
- r 63, 179
- r 64, 383
- r 65, 393
-
- r 66-67, 247
- r 68-69, 173
- r 70, 179
- r 71, 383
- r 72, 173

THE BORDER:

Stitches used in this pattern:

Sl st - slip stitch

Ch - chain

Sc - single crochet

Dc - double crochet

Tr - treble

Picot - 3 ch, 1 sc in 1:st ch.





R 1: (colour 247)

1 ch, 1 sc in the same stitch. (1 ch, 1 sc in next 1-ch-space) repeat until last 1-ch-space of the side.

In the 2-ch-space of the tip, work 1 ch + 1 sc + 2 ch + 1 sc.

(1 ch, 1 sc in next 1-ch-space) repeat until last 1-ch-space. 1 ch, 1 sc in the last dc.

R2: (colour 393)

4 ch, 1 dc in the same stitch. (1 ch, 1 dc in next sc) repeat until last sc on the side.

In the 2-ch-space of the tip, work 1 ch + 1 dc + 2 ch + 1 dc.

(1 ch, 1 dc in next sc) repeat until second last sc. 1 ch + 1 dc + 1 ch + 1 dc in the last sc.

R3: (colour 383)

8 ch, 1 dc in next dc. (5 ch, skip 1 dc, 1 dc in the next dc) repeat until last dc on the side.

In the 2-ch-space of the tip, work 5 ch + 1 dc + 5 ch. 1 dc in the 1:st dc on the side.

(5 ch, skip 1 dc, 1 dc in the next dc) repeat until second last dc. 5 ch + 1 dc in the last dc.

R4: (colour 394)

3 ch, picot, 1 dc in the same stitch, 1 sl st in the 3:rd ch of next 5-ch-space. (1 dc + picot + 1 dc in next dc, 1 sl st in 3:rd ch of next 5-ch-space) repeat until last dc on the side.

In the middle dc of the tip, work 1 dc + 2 tr + picot + 2 tr + 1 dc. 1 sl st in the 3:rd ch of next 5-ch-space.

(1 dc + picot + 1 dc in next dc, 1 sl st in 3:rd ch of next 5-ch-space) repeat until last 5-ch-space.

1 dc + picot + 1 dc in the last dc.

Add beaded tassels if you like, done!

