



Green house #7 shawl

7 is a large triangular shawl. It is worked sideways and starts with an I-cord 4 stitches wide. The body is worked in garter stitch with delicate lacey leaves shaping the bottom edges. The scalloped edge is formed by leaf tips that stick out. These tips are worked using German short rows aka double stitches (DS) (see tip page 2).

The lace and the garter stitch body make it an easy project, but it needs your attention because of the increases and decreases that shape the shawl and the leaves.

Anne, *al-fa* on Ravelry
www.alfaknits.wordpress.com

my designs are at :
www.ravelry.com/designers/atelier-alfa

SIZES

one size easily adaptable. It can be made as a large wrap or a smaller shawllette. See page 2 to have an idea of the shape.

As pictured after blocking:

wingspan : 210 cm / 83"
depth: 70 cm / 27½"

WHAT YOU'LL NEED

FINGERING / 4 PLY

as pictured (large shawl)

± 900 m / 990 yards

3.5 mm (US 4) straight needles or circular
needle

marker

tapestry needle

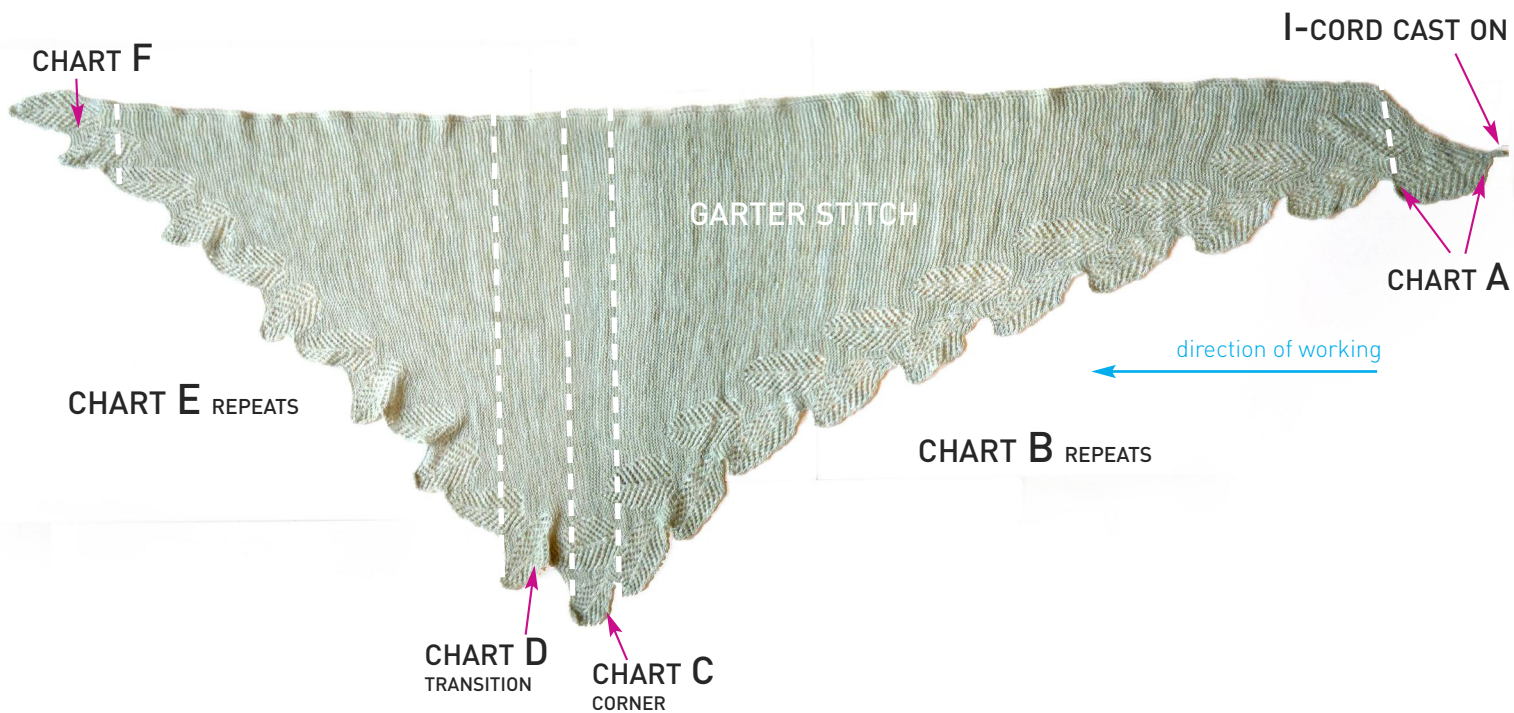
GAUGE

is not important but will affect the size of your shawl. As the sample: 23 sts and 44 rows (= 22 ridges) in garter stitch (blocked) = 10 x 10 cm (4" x 4")

STITCHES

garter stitch: knit RS and WS rows

stitch pattern: see pages 3 to 7 for the charts and pages 8 to 13 for the written instructions



ABBREVIATIONS

sts	stitches
k	knit
p	purl
sl	slip
kfb	knit in the front and back loop of the same stitch
yo	yarn over
wyib	with yarn in back
wyif	with yarn in front
m1L	make 1 stitch - left increase (see bottom of this page)
k2tog	knit 2 sts together
ssk	slip slip knit: slip separately 2 sts as if to knit, knit the 2 sts together through back loop
DS	double stitch (see below)
CDD	central double decrease: slip 2 sts as if to knit, k next stitch, pass the slipped stitches over the knitted stitch = 2 sts decreased

Edge stitches are worked as follows: in RS rows slip 1 st purlwise with yarn in back (wyib), in WS rows: slip 1 purlwise with yarn in front (wyif).

PATTERN

I-CORD CAST ON

Cast on 4 sts, turn.

Knit 4, slip 4 sts back to left needle

Repeat from * to * 4 times more = 5 rows of I-cord

set-up row (RS): kfb twice, yo, kfb twice


9 sts

set-up row (WS): sl1, p8

- Work **chart A** once (chart page 3 and written instructions page 8).
- **Chart B** shapes the right bottom edge and is repeated until work measures a little more than half the desired wingspan. End the last repeat with row 16, ready to begin chart C. Take into account that the shawl will grow between 10 and 20 % after blocking depending on your yarn. When starting the next chart C, you should have a multiple of 26 sts + 16 sts before the marker to work the rest of the shawl. Adjust the number of sts by increasing or decreasing the required number of sts in the garter section before the marker.
- **Chart C** shapes the corner and is worked once.
- **Chart D** makes the transition between the corner and the left edge. It is also worked once.
- **Chart E** shapes the left edge and is repeated until there are not enough stitches left to replace the marker in row 1. Only 10 sts remain before the marker. at this point
- Finally **Chart F**, the corner leaf is worked.

TIP: GERMAN SHORT ROWS AKA DOUBLE STITCHES (DS)

at the knitside (RS)

 Work to the turning point, turn. Slip the first stitch purlwise from left hand to right hand needle. With the working yarn pull the stitch tightly up and over the needle towards the back. (the pulled stitch looks like a double stitch (DS) hence the name) That's it. Bring yarn to front and purl the row.

www.youtube.com/watch?v=KooKdm0YBbw

When working the bind off of the leaf tips, take care to purl each DS as 1 stitch.

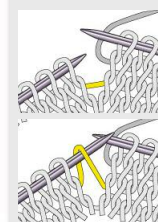
FINISHING

Soak in lukewarm water and block lightly.

A NOTE ON THE CHARTS

The increases and decreases that shape the shawl and make the leaves tilt are quite 'exotic' making this shawl not completely intuitive to knit. They are sometimes made by omitting or adding increases or decreases in the stitch pattern of the leaves and sometimes by regular increases or decreases in the background. Whenever there is an 'exotic' decrease or increase it is charted in pink to catch your attention.

m1L : make 1 stitch (left slanted)



With the left needle pick up the strand between 2 stitches, from front to back and knit through the back loop.



CHART A (FIRST LEAF)

Find the written instructions page 8 and 9.

After the I-cord cast on and the first set-up rows with increases, work chart A from row 1 to 47. After row 47, the leaf tip that sticks out and shapes the scalloped edge starts (blue shading in chart). It is first worked over 10 sts and decreased using short rows (DS: double stitches aka German short rows: see tip page 2). The rows are labeled with letters instead of numbers to avoid confusion. Loosely bind off 5 sts purlwise after having worked the last row (H) and continue row 48 to end.

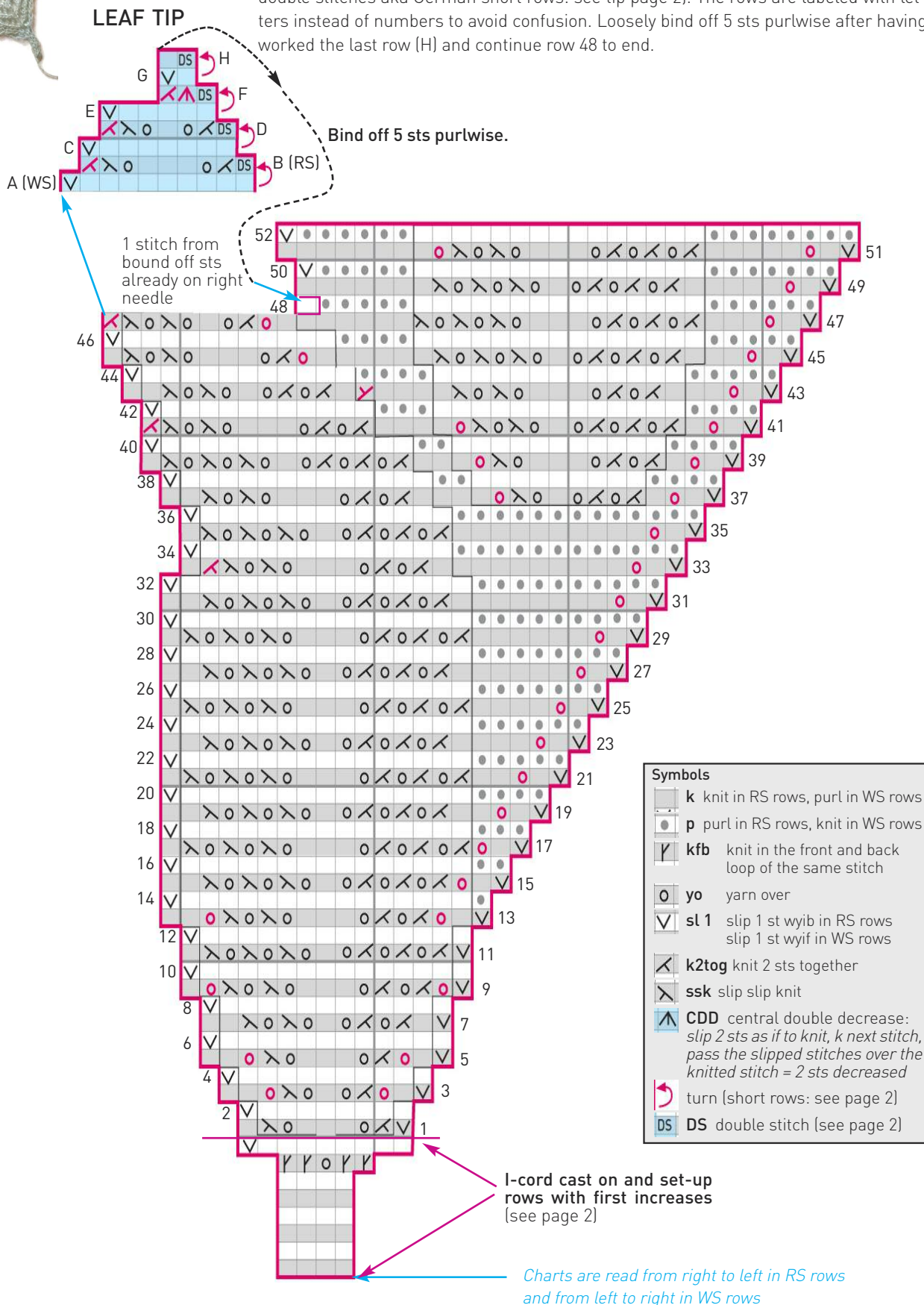




CHART B Find the written instructions page 9 and 10.

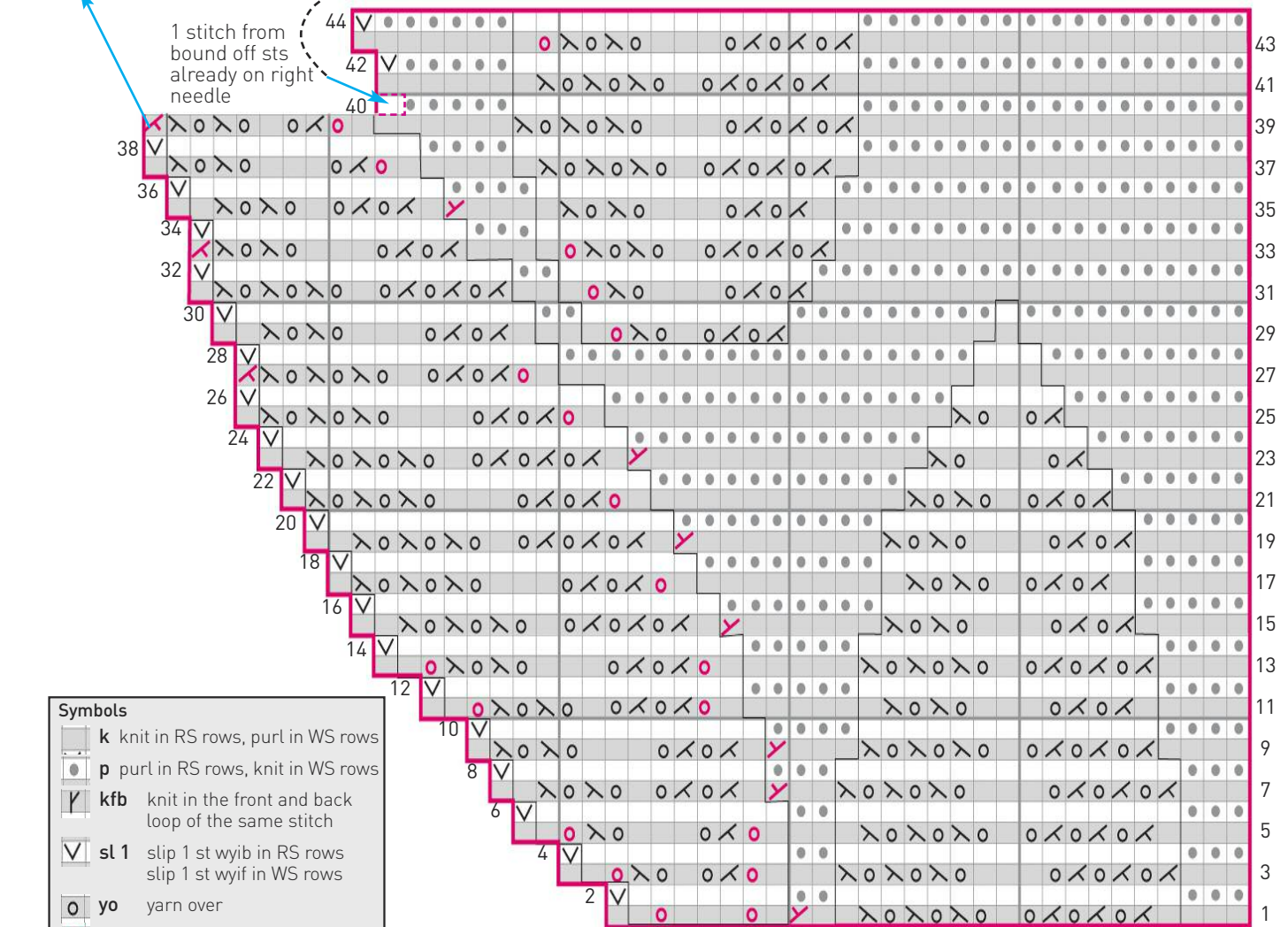
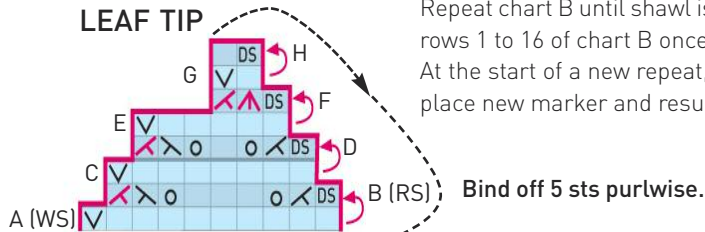
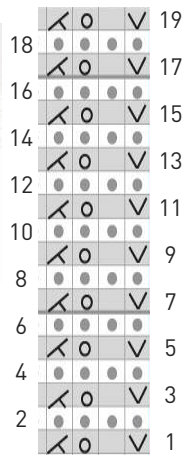
The right edge is worked throughout the shawl in every RS row as follows: sl 1 wyib, k1, yo, k2tog, k to marker. In WS rows the 4 edge stitches are knit. When you work chart B for the first time, the marker in row 1 will be placed after 5 stitches as follows: sl 1, k1, yo, k2tog, k1, place m and start row 1 of chart B.

Work rows 1 to 39. After row 39, the leaf tip that sticks out starts (blue shading in chart). It is first worked over 10 sts and decreased using short rows [DS: double stitches aka German short rows: see tip page 2]. The rows are labeled with letters instead of numbers to avoid confusion. Loosely bind off 5 sts purlwise after having worked the last row (H) and continue row 40 to end.

Repeat chart B until shawl is about 5/8 of the desired length, then work rows 1 to 16 of chart B once more.

At the start of a new repeat, work to the marker, remove marker, k14, place new marker and resume row 1 of the chart.

RIGHT EDGE



Symbols

- k knit in RS rows, purl in WS rows
- p purl in RS rows, knit in WS rows
- kfb knit in the front and back loop of the same stitch
- sl 1 slip 1 st wyib in RS rows
slip 1 st wyif in WS rows
- yo yarn over
- m1L make 1 stitch - left increase
- k2tog knit 2 sts together
- ssk slip slip knit
- CDD central double decrease:
slip 2 sts as if to knit, k next stitch,
pass the slipped stitches over the
knitted stitch = 2 sts decreased
- turn [short rows: see page 2]
- DS double stitch [see page 2]

place marker

Charts are read from right to left in RS rows
and from left to right in WS rows



CHART C (CORNER)

Find the written instructions page 10.

When starting chart C, you should have a multiple of 26 sts + 16 sts before the marker and 39 sts after the marker to work the rest of the shawl. Adjust the number of sts before the marker by increasing or decreasing the required number of sts in the garter section. FYI I worked chart B nine times and had 130 sts before the marker and 39 sts after the marker. To obtain a multiple of 26 sts + 16 sts before the marker, I increased 16 sts in the garter section (185 sts = 146 + 39). I could have decreased 10 sts to obtain a total of 159 sts: 120 + 39). Use kfb to increase and k2tog to decrease. At the start of row 1, knit to 6 sts before the marker, place new marker, k6, remove old marker and continue row 1.

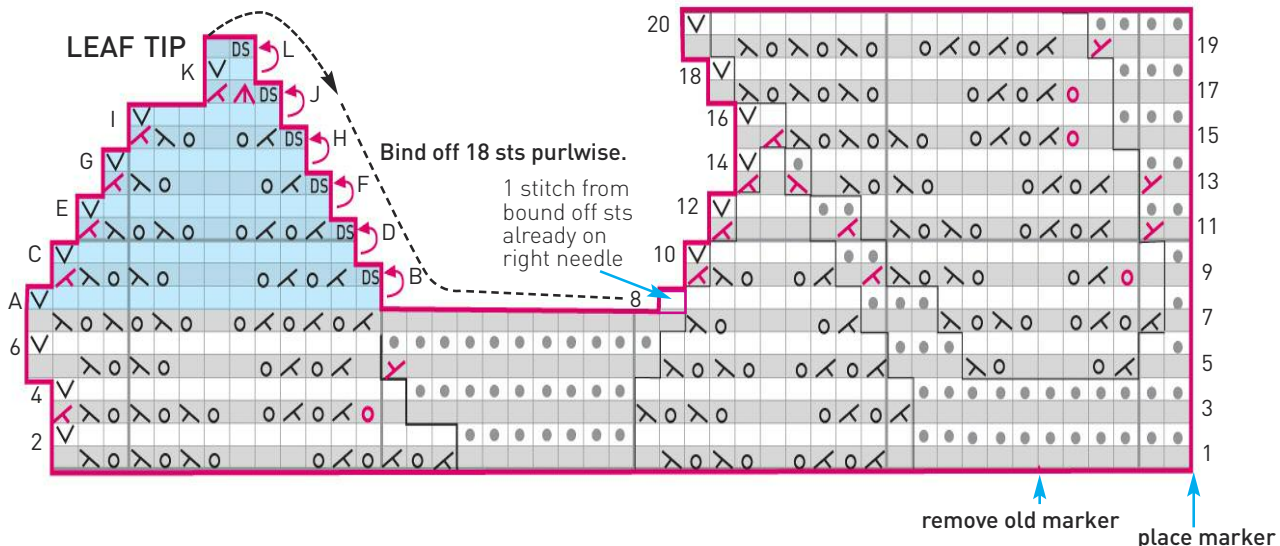


CHART D (TRANSITION BETWEEN CORNER AND LEFT EDGE)

Find the written instructions page 10 and 11.

At the start of row 1, knit to 26 sts before the marker, place new marker, work row 1 removing the old marker.

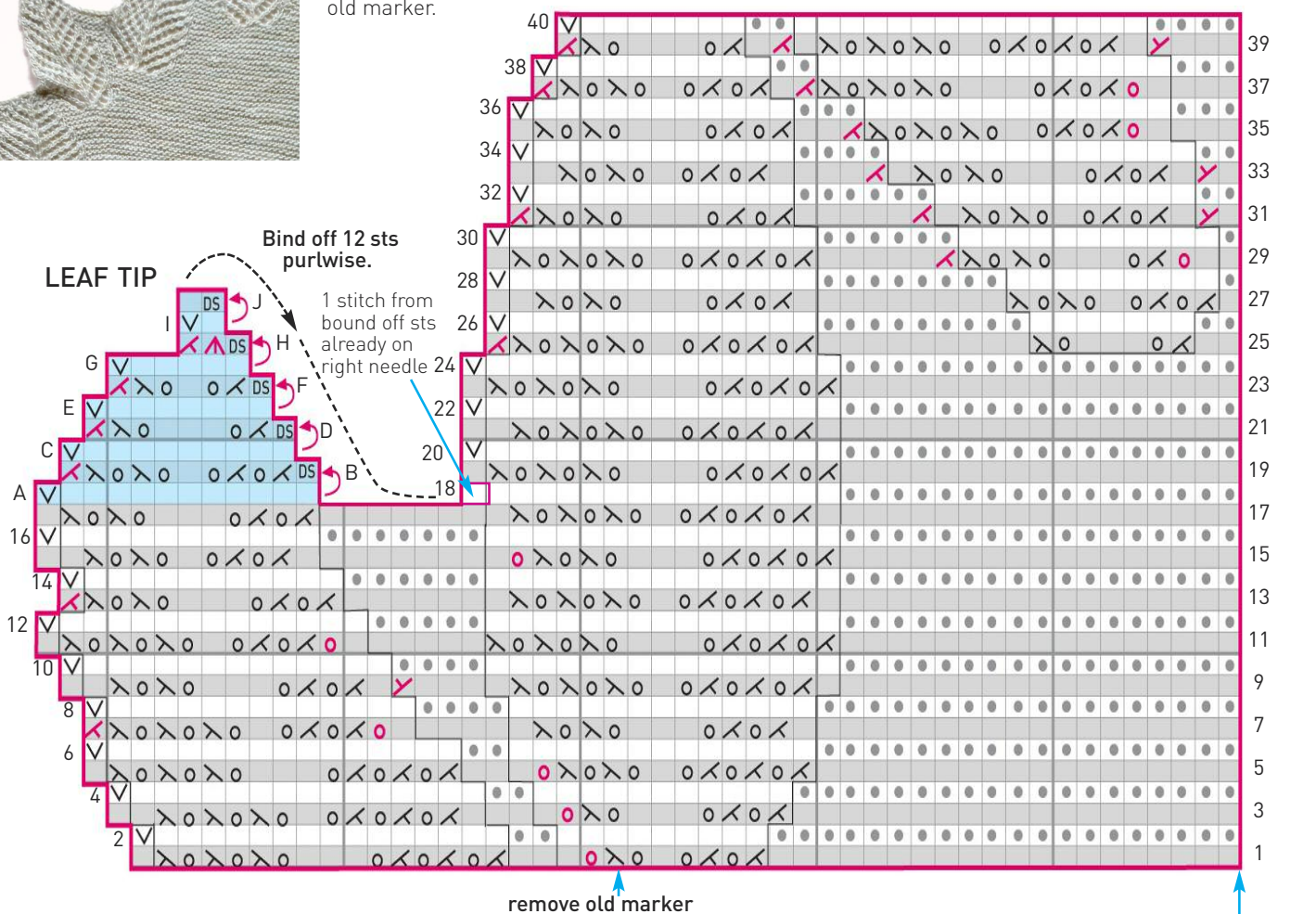


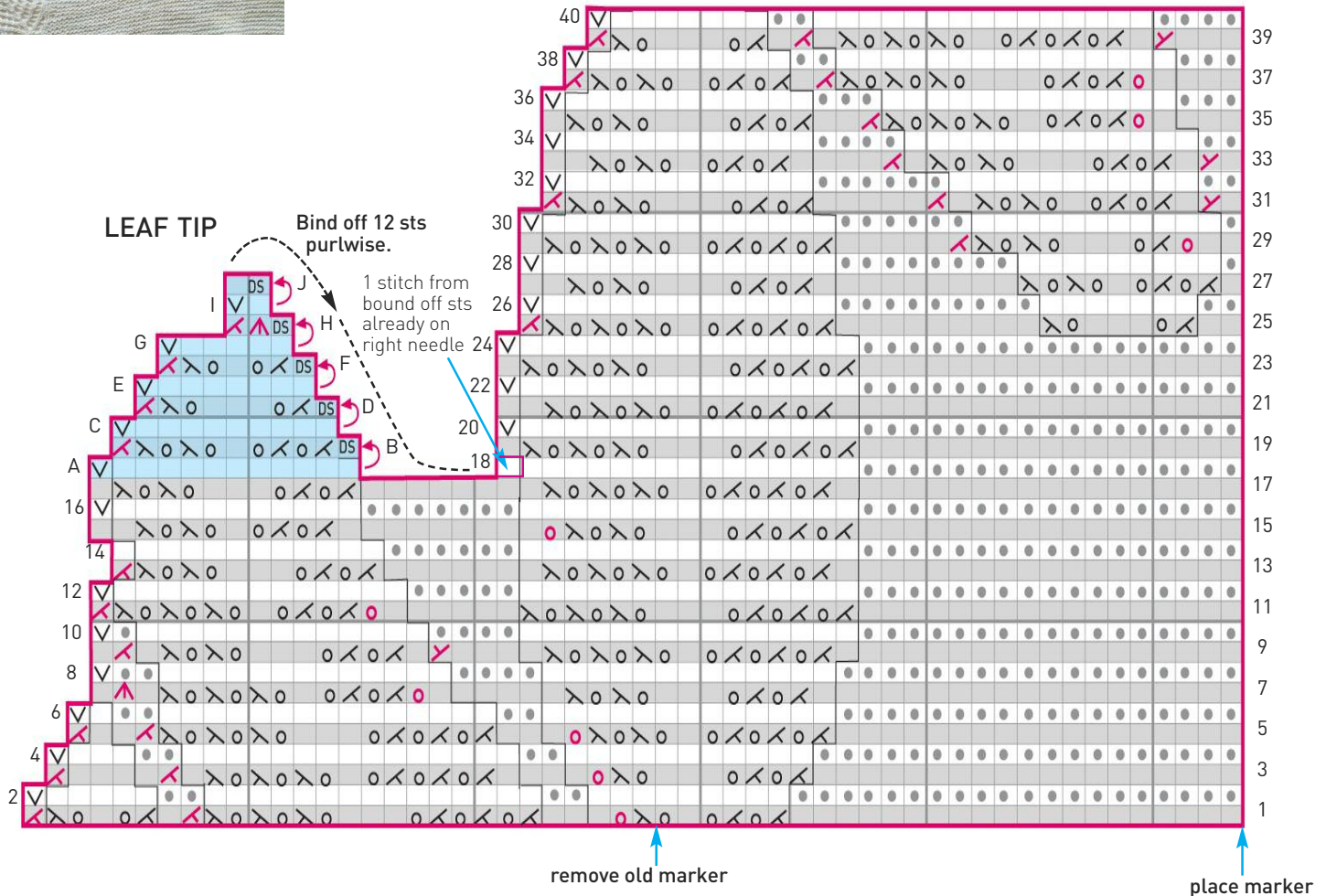


CHART E (LEFT EDGE)

Find the written instructions page 11 and 12.

At the start of row 1, knit to 26 sts before the marker, place new marker, work row 1 removing the old marker.

Repeat chart E until there are not enough stitches left to place a new marker 26 sts away. Only 10 sts remain before the marker. Switch to the final chart F for the last leaf.



Symbols	
	k knit in RS rows, purl in WS rows
	p purl in RS rows, knit in WS rows
	kfb knit in the front and back loop of the same stitch
	sl 1 slip 1 st wyib in RS rows slip 1 st wyif in WS rows
	yo yarn over
	m1L make 1 stitch - left increase
	k2tog knit 2 sts together
	ssk slip slip knit
	CDD central double decrease: slip 2 sts as if to knit, k next stitch, pass the slipped stitches over the knitted stitch = 2 sts decreased
	turn (short rows: see page 2)
	DS double stitch (see page 2)

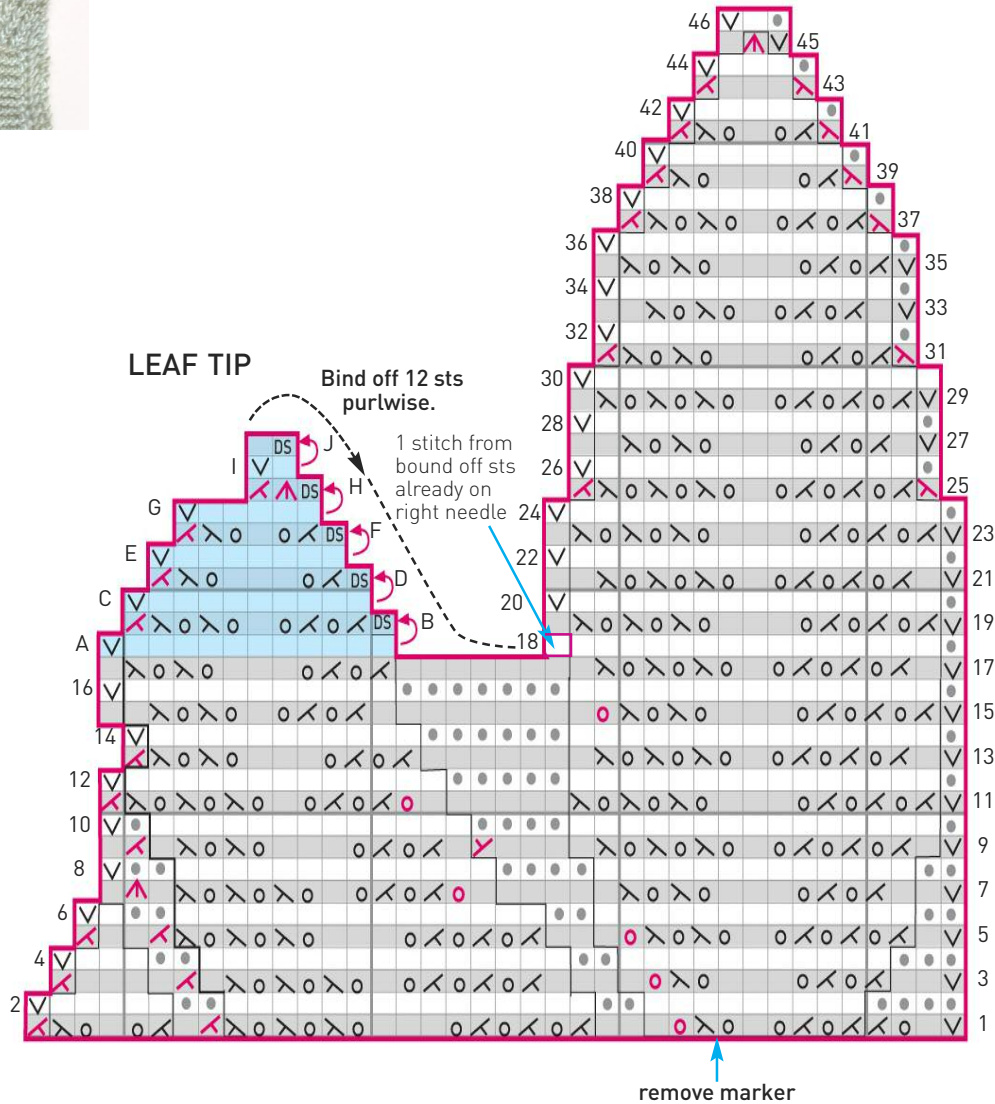


CHART F (FINAL LEAF)

Find the written instructions page 12 and 13.

Remove the marker in row 1. Work chart F once until 3 stitch remain. Break yarn and thread it through the 3 remaining stitches.

Break yarn and thread it through the 3 remaining stitches.



Symbols

	k knit in RS rows, purl in WS rows
	p purl in RS rows, knit in WS rows
	kfb knit in the front and back loop of the same stitch
	sl 1 slip 1 st wyib in RS rows slip 1 st wyif in WS rows
	yo yarn over
	m1L make 1 stitch - left increase
	k2tog knit 2 sts together
	ssk slip slip knit
	CDD central double decrease: <i>slip 2 sts as if to knit, k next stitch, pass the slipped stitches over the knitted stitch = 2 sts decreased</i>
	turn (short rows: see page 2)
	DS double stitch (see page 2)

WRITTEN INSTRUCTIONS

CHART A (FIRST LEAF)

If you prefer working from charts, see chart A page 3

Edge stitches: the first stitch of the row is slipped purlwise: in RS rows wyib (with yarn in back) and in WS rows wyif (with yarn in front).

row 1 (RS): sl 1, k2tog, yo, k3, yo, ssk, k1.	
row 2 (WS): sl 1, p to end.	
row 3 (RS): sl 1, k1, yo, k2tog, yo, k1, yo, ssk, yo, k2.	11 sts
row 4 (WS): sl 1, p to end.	
row 5 (RS): sl 1, k1, yo, k2tog, yo, k3, yo, ssk, yo, k2.	13 sts
row 6 (WS): sl 1, p to end.	
row 7 (RS): sl 1, k1, (k2tog, yo) x 2, k1, (yo, ssk) x 2, k2.	
row 8 (WS): sl 1, p to end.	
row 9 (RS): sl 1, yo, (k2tog, yo) x 2, k3, (yo, ssk) x 2, yo, k1.	15 sts
row 10 (WS): sl 1, p to end.	
row 11 (RS): sl 1, (k2tog, yo) x 3, k1, (yo, ssk) x 3, k1.	
row 12 (WS): sl 1, p to end.	
row 13 (RS): sl 1, k1, yo, (k2tog, yo) x 2, k3, (yo, ssk) x 2, yo, k2.	17 sts
row 14 (WS): sl 1, p15, k1.	
row 15 (RS): sl 1, k1, yo, (k2tog, yo) x 3, k1, (yo, ssk) x 3, k2.	18 sts
row 16 (WS): sl 1, p15, k2.	
row 17 (RS): sl 1, k1, yo, (k2tog, yo) x 3, k3, (yo, ssk) x 3, k1.	19 sts
row 18 (WS): sl 1, p15, k3.	
row 19 (RS): sl 1, k1, yo, k2, (k2tog, yo) x 3, k1, (yo, ssk) x 3, k2.	20 sts
row 20 (WS): sl 1, p15, k4.	
row 21 (RS): sl 1, k1, yo, k2, (k2tog, yo) x 3, k3, (yo, ssk) x 3, k1.	21 sts
row 22 (WS): sl 1, p15, k5.	
row 23 (RS): sl 1, k1, yo, k4, (k2tog, yo) x 3, k1, (yo, ssk) x 3, k2.	22 sts
row 24 (WS): sl 1, p15, k6.	
row 25 (RS): sl 1, k1, yo, k4, (k2tog, yo) x 3, k3, (yo, ssk) x 3, k1.	23 sts
row 26 (WS): sl 1, p15, k7.	
row 27 (RS): sl 1, k1, yo, k6, (k2tog, yo) x 3, k1, (yo, ssk) x 3, k2.	24 sts
row 28 (WS): sl 1, p15, k8.	
row 29 (RS): sl 1, k1, yo, k6, (k2tog, yo) x 3, k3, (yo, ssk) x 3, k1.	25 sts
row 30 (WS): sl 1, p15, k9.	
row 31 (RS): sl 1, k1, yo, k8, (k2tog, yo) x 3, k1, (yo, ssk) x 3, k2.	26 sts
row 32 (WS): sl 1, p15, k10.	
row 33 (RS): sl 1, k1, yo, k10, (k2tog, yo) x 2, k3, (yo, ssk) x 2, k1, k2tog, k1.	26 sts
row 34 (WS): sl 1, p13, k12.	
row 35 (RS): sl 1, k1, yo, k10, (k2tog, yo) x 3, k1, (yo, ssk) x 3, k1.	27 sts
row 36 (WS): sl 1, p13, k13.	
row 37 (RS): sl 1, k1, yo, k1, (k2tog, yo) x 2, k1, yo, ssk, yo, k4, (k2tog, yo) x 2, k3, (yo, ssk) x 2, k2.	29 sts
row 38 (WS): sl 1, p13, k2, p9, k4.	
row 39 (RS): sl 1, k1, yo, k1, (k2tog, yo) x 2, k3, yo, ssk, yo, k3, (k2tog, yo) x 3, k1, (yo, ssk) x 3, k1.	31 sts
row 40 (WS): sl 1, p13, k2, p11, k4.	
row 41 (RS): sl 1, k1, yo, k1, (k2tog, yo) x 3, k1, (yo, ssk) x 2, yo, k4, (k2tog, yo) x 2, k3, (yo, ssk) x 2, k2tog.	32 sts
row 42 (WS): sl 1, p11, k3, p13, k4.	
row 43 (RS): sl 1, k1, yo, k3, (k2tog, yo) x 2, k3, (yo, ssk) x 2, k4, m1L, k1, (k2tog, yo) x 2, k1, (yo, ssk) x 2, k2.	34 sts
row 44 (WS): sl 1, p11, k4, p13, k5.	
row 45 (RS): sl 1, k1, yo, k3, (k2tog, yo) x 3, k1, (yo, ssk) x 3, k6, yo, k2tog, yo, k3, (yo, ssk) x 2, k1.	36 sts
row 46 (WS): sl 1, p11, k4, p15, k5.	
row 47 (RS): sl 1, k1, yo, k3, (k2tog, yo) x 3, k3, (yo, ssk) x 3, k7, yo, k2tog, yo, k1, (yo, ssk) x 2, k2tog.	37 sts

LEAF TIP WITH SHORT ROWS (DS)

row A (WS): sl 1, p9, turn.
row B (RS): DS, k2tog, yo, k3, yo, ssk, k2tog.
row C (WS): sl 1, p7, turn.
row D (RS): DS, k2tog, yo, k1, yo, ssk, k2tog.
row E (WS): sl 1, p5, turn.
row F (RS): DS, CDD, k2tog.
row G (WS): sl 1, p1, turn.
row H (RS): DS, k1.
row I (WS): bind off purlwise and loosely 5 sts.

row 48 (WS): [1 st from bind off is already on right needle], k5, p15, k6.	27 sts
row 49 (RS): sl 1, k1, yo, k5, (k2tog, yo) x 3, k1, (yo, ssk) x 3, k7.	28 sts
row 50 (WS): sl 1, k5, p15, k7.	
row 51 (RS): sl 1, k1, yo, k5, (k2tog, yo) x 3, k3, (yo, ssk) x 2, yo, k8.	30 sts
row 52 (WS): sl 1, k6, p15, k8.	

CHART B chart page 4

A marker at the beginning of the chart will be placed in row 1.

Edge at the beginning of RS rows is worked as follows: slip 1 wyib, k1, yo, k2tog.

The edge stitch at WS rows is worked as established.

row 1 (RS): sl 1, k1, yo, k2tog, k1, place m (= beginning of chart B), k4, (k2tog, yo) x 3, k1, (yo, ssk) x 3, k2, m1L, k1, yo, k3, yo, k2. 33 sts

row 2 (WS): sl 1, p7, k2, p15, k to m, slip m, k to end.

row 3 (RS): sl 1, k1, yo, k2tog, k to m, slip m, k3, (k2tog, yo) x 3, k3, (yo, ssk) x 3, k3, yo, k2tog, yo, k1, yo, ssk, yo, k2.

row 4 (WS): sl 1, p9, k2, p15, k to end slipping m when you get to it.

row 5 (RS): work to m, slip m, k4, (k2tog, yo) x 3, k1, (yo, ssk) x 3, k4, yo, k2tog, yo, k3, yo, ssk, yo, k2.

row 6 (WS): sl 1, p11, k2, p15, k to end slipping m.

row 7 (RS): work to m, slip m, k3, (k2tog, yo) x 3, k3, (yo, ssk) x 3, k2, m1L, k1, (k2tog, yo) x 2, k1, (yo, ssk) x 2, k2.

row 8 (WS): sl 1, p11, k3, p15, k to end slipping m.

row 9 (RS): work to m, slip m, k4, (k2tog, yo) x 3, k1, (yo, ssk) x 3, k3, m1L, k1, (k2tog, yo) x 2, k3, (yo, ssk) x 2, k1.

row 10 (WS): sl 1, p12, k4, p13, k to end slipping m.

row 11 (RS): work to m, slip m, k5, (k2tog, yo) x 2, k3, (yo, ssk) x 2, k7, yo, (k2tog, yo) x 2, k1, (yo, ssk) x 2, yo, k2.

row 12 (WS): sl 1, p13, k5, p13, k to end slipping m.

row 13 (RS): work to m, slip m, k4, (k2tog, yo) x 3, k1, (yo, ssk) x 3, k6, yo, (k2tog, yo) x 2, k3, (yo, ssk) x 2, yo, k2.

row 14 (WS): sl 1, p15, k5, p13, k to end slipping m.

row 15 (RS): work to m, slip m, k5, (k2tog, yo) x 2, k3, (yo, ssk) x 2, k6, m1L, k1, (k2tog, yo) x 3, k1, (yo, ssk) x 3, k2.

row 16 (WS): sl 1, p15, k7, p11, k to end slipping m.

row 17 (RS): work to m, slip m, k6, (k2tog, yo) x 2, k1, (yo, ssk) x 2, k10, yo, (k2tog, yo) x 2, k3, (yo, ssk) x 3, k1.

row 18 (WS): sl 1, p15, k8, p11, k to end slipping m.

row 19 (RS): work to m, slip m, k5, (k2tog, yo) x 2, k3, (yo, ssk) x 2, k8, m1L, k1, (k2tog, yo) x 3, k1, (yo, ssk) x 3, k2.

row 20 (WS): sl 1, p15, k9, p11, k to end slipping m.

row 21 (RS): work to m, slip m, k6, (k2tog, yo) x 2, k1, (yo, ssk) x 2, k12, yo, (k2tog, yo) x 2, k3, (yo, ssk) x 3, k1.

row 22 (WS): sl 1, p15, k11, p9, k to end slipping m.

row 23 (RS): work to m, slip m, k7, k2tog, yo, k3, yo, ssk, k12, m1L, k1, (k2tog, yo) x 3, k1, (yo, ssk) x 3, k2.

row 24 (WS): sl 1, p15, k13, p7, k to end slipping m.

row 25 (RS): work to m, slip m, k8, k2tog, yo, k1, yo, ssk, k16, yo, (k2tog, yo) x 2, k3, (yo, ssk) x 3, k1.

row 26 (WS): sl 1, p15, k15, p5, k to end slipping m.

row 27 (RS): work to m, slip m, k31, yo, (k2tog, yo) x 2, k1, (yo, ssk) x 3, k2tog.

row 28 (WS): sl 1, p13, k18, p3, k to end slipping m.

row 29 (RS): work to m, slip m, k20, (k2tog, yo) x 2, k1, yo, ssk, yo, k4, (k2tog, yo) x 2, k3, (yo, ssk) x 2, k2.

row 30 (WS): sl 1, p13, k2, p9, k9, p1, k to end slipping m.

row 31 (RS): work to m, slip m, k19, (k2tog, yo) x 2, k3, yo, ssk, yo, k3, (k2tog, yo) x 3, k1, (yo, ssk) x 3, k1.

row 32 (WS): sl 1, p13, k2, p11, k to end slipping m.

row 33 (RS): work to m, slip m, k18, (k2tog, yo) x 3, k1, (yo, ssk) x 2, yo, k4, (k2tog, yo) x 2, k3, (yo, ssk) x 2, k2tog.

row 34 (WS): sl 1, p11, k3, p13, k to end slipping m.

row 35 (RS): work to m, slip m, k19, (k2tog, yo) x 2, k3, (yo, ssk) x 2, k4, m1L, k1, (k2tog, yo) x 2, k1, (yo, ssk) x 2, k2.

row 36 (WS): sl 1, p11, k4, p13, k to end slipping m.

row 37 (RS): work to m, slip m, k18, (k2tog, yo) x 3, k1, (yo, ssk) x 3, k6, yo, k2tog, yo, k3, (yo, ssk) x 2, k1.

row 38 (WS): sl 1, p11, k4, p15, k to end slipping m.

row 39 (RS): work to m, slip m, k17, (k2tog, yo) x 3, k3, (yo, ssk) x 3, k7, yo, k2tog, yo, k1, (yo, ssk) x 2, k2tog.

LEAF TIP WITH SHORT ROWS (DS)

row A (WS): sl 1, p9, turn.

row B (RS): DS, k2tog, yo, k3, yo, ssk, k2tog.

row C (WS): sl 1, p7, turn.

row D (RS): DS, k2tog, yo, k1, yo, ssk, k2tog.

row E (WS): sl 1, p5, turn.

row F (RS): DS, CDD, k2tog.

row G (WS): sl 1, p1, turn.

row H (RS): DS, k1.

row I (WS): bind off purlwise and loosely 5 sts.

row 40 (WS): [1 st from bind off on right needle] k5, p15, k to end slipping m.

row 41 (RS): work to m, slip m, k18, (k2tog, yo) x 3, k1, (yo, ssk) x 3, k7.

row 42 (WS): sl 1, k5, p15, k to end slipping m.
row 43 (RS): work to m, slip m, k17, (k2tog, yo) x 3, k3, (yo, ssk) x 2, yo, k8.
row 44 (WS): sl 1, k6, p15, k to end slipping m.

Work more repeats of chart B. With every new repeat row 1 will be worked as follows: work to m, remove the old m, k14, place new m and resume row 1.

(FYI: I made 8 more repeats of chart B and the shawl at this point measures 125 cm / 49" when it is blocked which is a bit more than half the total length (about 5/8 to be exact))

Repeat rows 1 to 16 once more, then continue with chart C.

CHART C (CORNER) chart page 5

You should have a multiple of 26 sts + 16 sts before the marker to work the rest of the shawl. Adjust the number of sts by increasing or decreasing the required number of sts in the garter section before the marker.

row 1 (RS): work to 6 sts before m, place new m, k6, remove old m, k6, (k2tog, yo) x 2, k1, (yo, ssk) x 2, k8, (k2tog, yo) x 3, k3, (yo, ssk) x 3, k1.
row 2 (WS): sl 1, p15, k7, p11, k to end slipping m.
row 3 (RS): work to m, slip m, k11, (k2tog, yo) x 2, k3, (yo, ssk) x 2, k10, yo, (k2tog, yo) x 2, k1, (yo, ssk) x 3, k2tog.
row 4 (WS): sl 1, p13, k9, p11, k to end slipping m.
row 5 (RS): work to m, slip m, k2, k2tog, yo, k3, yo, ssk, k3, (k2tog, yo) x 2, k1, (yo, ssk) x 2, k10, m1L, k1, (k2tog, yo) x 2, k3, (yo, ssk) x 3, k2.
row 6 (WS): sl 1, p13, k11, p9, k3, p8, k to end slipping m.
row 7 (RS): work to m, slip m, k1, (k2tog, yo) x 2, k1, (yo, ssk) x 2, k3, k2tog, yo, k3, yo, ssk, k12, (k2tog, yo) x 3, k1, (yo, ssk) x 3, k1.

LEAF TIP WITH SHORT ROWS

row A (WS): sl 1, p13, turn.
row B (RS): DS, (k2tog, yo) x 2, k3, (yo, ssk) x 2, k2tog.
row C (WS): sl 1, p11, turn.
row D (RS): DS, (k2tog, yo) x 2, k1, (yo, ssk) x 2, k2tog.
row E (WS): sl 1, p9, turn.
row F (RS): DS, k2tog, yo, k3, yo, ssk, k2tog.
row G (WS): sl 1, p7, turn.
row H (RS): DS, k2tog, yo, k1, yo, ssk, k2tog.
row I (WS): sl 1, p5, turn.
row J (RS): DS, CDD, k2tog.
row K (WS): sl 1, p1, turn.
row L (RS): DS, k1.
row M (WS): bind off purlwise and loosely 18 sts.

row 8 (WS): (1 st from bind off on right needle) p7, k3, p9, k to end slipping m.
row 9 (RS): work to m, slip m, k2, yo, k2tog, yo, k3, (yo, ssk) x 2, k2tog, k1, k2tog, yo, k1, yo, ssk, k2tog.
row 10 (WS): sl 1, p5, k2, p11, k to end slipping m.
row 11 (RS): work to m, slip m, k1, m1L, k1, (k2tog, yo,) x 2, k1, (yo, ssk) x 2, k1, k2tog, k4, k2tog.
row 12 (WS): sl 1, p3, k2, p11, k to end slipping m.
row 13 (RS): work to m, slip m, k1, m1L, k1, (k2tog, yo,) x 2, k3, (yo, ssk) x 2, k1, ssk, k1, k2tog.
row 14 (WS): sl 1, p1, k1, p13, k to end slipping m.
row 15 (RS): work to m, slip m, k4, yo, (k2tog, yo,) x 2, k1, (yo, ssk) x 3, k2tog, k1.
row 16 (WS): sl 1, k1, p13, k to end slipping m.
row 17 (RS): work to m, slip m, k4, yo, (k2tog, yo,) x 2, k3, (yo, ssk) x 2, yo, k2.
row 18 (WS): sl 1, p15, k to end slipping m.
row 19 (RS): work to m, slip m, k3, m1L, k1, (k2tog, yo,) x 3, k1, (yo, ssk) x 3, k2.
row 20 (WS): sl 1, p15, k to end slipping m.

CHART D (TRANSITION BETWEEN CORNER AND LEFT EDGE) chart page 5

row 1 (RS): work to 26 sts before m, place new m, k20, (k2tog, yo) x 2, k1, yo, ssk removing old m, yo, k3, (k2tog, yo) x 3, k3, (yo, ssk) x 3, k1.
row 2 (WS): sl 1, p15, k2, p9, k to end slipping m.
row 3 (RS): work to m, slip m, k19, (k2tog, yo) x 2, k3, yo, ssk, yo, k4, (k2tog, yo) x 3, k1, (yo, ssk) x 3, k2.
row 4 (WS): sl 1, p15, k2, p11, k to end slipping m.
row 5 (RS): work to m, slip m, k18, (k2tog, yo) x 3, k1, (yo, ssk) x 2, yo, k3, (k2tog, yo) x 3, k3, (yo, ssk) x 3, k1.
row 6 (WS): sl 1, p15, k2, p13, k to end slipping m.

row 7 (RS): work to m, slip m, k19, (k2tog, yo) x 2, k3, (yo, ssk) x 2, k6, yo, (k2tog, yo) x 2, k1, (yo, ssk) x 3, k2tog.
row 8 (WS): sl 1, p13, k4, p13, k to end slipping m.
row 9 (RS): work to m, slip m, k18, (k2tog, yo) x 3, k1, (yo, ssk) x 3, k4, m1L, k1, (k2tog, yo) x 2, k3, (yo, ssk) x 2, k2.
row 10 (WS): sl 1, p13, k4, p15, k to end slipping m.
row 11 (RS): work to m, slip m, k17, (k2tog, yo) x 3, k3, (yo, ssk) x 3, k6, yo, (k2tog, yo) x 2, k1, (yo, ssk) x 3, k1.
row 12 (WS): sl 1, p13, k5, p15, k to end slipping m.
row 13 (RS): work to m, slip m, k18, (k2tog, yo) x 3, k1, (yo, ssk) x 3, k7, (k2tog, yo) x 2, k3, (yo, ssk) x 2, k2tog.
row 14 (WS): sl 1, p11, k6, p15, k to end slipping m.
row 15 (RS): work to m, slip m, k17, (k2tog, yo) x 3, k3, (yo, ssk) x 2, yo, k9, (k2tog, yo) x 2, k1, (yo, ssk) x 2, k2.
row 16 (WS): sl 1, p11, k7, p15, k to end slipping m.
row 17 (RS): work to m, slip m, k18, (k2tog, yo) x 3, k1, (yo, ssk) x 3, k8, (k2tog, yo) x 2, k3, (yo, ssk) x 2, k1.

LEAF TIP WITH SHORT ROWS

row A (WS): sl 1, p11, turn.
row B (RS): DS, (k2tog, yo) x 2, k1, (yo, ssk) x 2, k2tog.
row C (WS): sl 1, p9, turn.
row D (RS): DS, k2tog, yo, k3, yo, ssk, k2tog.
row E (WS): sl 1, p7, turn.
row F (RS): DS, k2tog, yo, k1, yo, ssk, k2tog.
row G (WS): sl 1, p5, turn.
row H (RS): DS, CDD, k2tog.
row I (WS): sl 1, p1, turn.
row J (RS): DS, k1.
row K (WS): bind off purlwise and loosely 12 sts.

row 18 (WS): (1 st from bind off on right needle) p15, k to end slipping m.
row 19 (RS): work to m, slip m, k17, (k2tog, yo) x 3, k3, (yo, ssk) x 3, k1.
row 20 (WS): sl 1, p15, k to end slipping m.
row 21 (RS): work to m, slip m, k18, (k2tog, yo) x 3, k1, (yo, ssk) x 3, k2.
row 22 (WS): sl 1, p15, k to end slipping m.
row 23 (RS): work to m, slip m, k17, (k2tog, yo) x 3, k3, (yo, ssk) x 3, k1.
row 24 (WS): sl 1, p15, k to end slipping m.
row 25 (RS): work to m, slip m, k2, k2tog, yo, k3, yo, ssk, k9, (k2tog, yo) x 3, k1, (yo, ssk) x 3, k2tog.
row 26 (WS): sl 1, p13, k9, p7, k to end slipping m.
row 27 (RS): work to m, slip m, k1, (k2tog, yo) x 2, k1, (yo, ssk) x 2, k9, (k2tog, yo) x 2, k3, (yo, ssk) x 2, k2.
row 28 (WS): sl 1, p13, k8, p9, k to end slipping m.
row 29 (RS): work to m, slip m, k2, yo, k2tog, yo, k3, (yo, ssk) x 2, k2tog, k5, (k2tog, yo) x 3, k1, (yo, ssk) x 3, k1.
row 30 (WS): sl 1, p13, k6, p11, k to end slipping m.
row 31 (RS): work to m, slip m, k1, m1L, k1, (k2tog, yo) x 2, k1, (yo, ssk) x 2, k1, k2tog, k5, (k2tog, yo) x 2, k3, (yo, ssk) x 2, k2tog.
row 32 (WS): sl 1, p11, k6, p11, k to end slipping m.
row 33 (RS): work to m, slip m, k1, m1L, k1, (k2tog, yo) x 2, k3, (yo, ssk) x 2, k1, k2tog, k4, (k2tog, yo) x 2, k1, (yo, ssk) x 2, k2.
row 34 (WS): sl 1, p11, k4, p13, k to end slipping m.
row 35 (RS): work to m, slip m, k4, yo, (k2tog, yo) x 2, k1, (yo, ssk) x 3, k2tog, k2, (k2tog, yo) x 2, k3, (yo, ssk) x 2, k1.
row 36 (WS): sl 1, p11, k3, p13, k to end slipping m.
row 37 (RS): work to m, slip m, k4, yo, (k2tog, yo) x 2, k3, (yo, ssk) x 3, k2tog, k1, (k2tog, yo) x 2, k1, (yo, ssk) x 2, k2tog.
row 38 (WS): sl 1, p9, k2, p15, k to end slipping m.
row 39 (RS): work to m, slip m, k3, m1L, k1, (k2tog, yo) x 3, k1, (yo, ssk) x 3, k1, k2tog, k1, k2tog, yo, k3, yo, ssk, k2tog.
row 40 (WS): sl 1, p7, k2, p15, k to end slipping m.

CHART E (LEFT EDGE) chart page 6

row 1 (RS): work to 26 sts before m, place new m, k20, (k2tog, yo) x 2, k1, yo, ssk removing old m, yo, k3, (k2tog, yo) x 3, k3, (yo, ssk) x 3, k2tog, k1, k2tog, yo, k1, yo, ssk, k2tog.
row 2 (WS): sl 1, p5, k2, p15, k2, p9, k to end slipping m.
row 3 (RS): work to m, slip m, k19, (k2tog, yo) x 2, k3, yo, ssk, yo, k4, (k2tog, yo) x 3, k1, (yo, ssk) x 3, k1, k2tog, k4, k2tog.
row 4 (WS): sl 1, p3, k2, p15, k2, p11, k to end slipping m.
row 5 (RS): work to m, slip m, k18, (k2tog, yo) x 3, k1, (yo, ssk) x 2, yo, k3, (k2tog, yo) x 3, k3, (yo, ssk) x 3, k2tog, k2, k2tog.

row 6 (WS): sl 1, p1, k2, p15, k2, p13, k to end slipping m.
row 7 (RS): work to m, slip m, k19, (k2tog, yo) x 2, k3, (yo, ssk) x 2, k6, yo, (k2tog, yo) x 2, k1, (yo, ssk) x 3, k1, CDD, k1.
row 8 (WS): sl 1, k2, p13, k4, p13, k to end slipping m.
row 9 (RS): work to m, slip m, k18, (k2tog, yo) x 3, k1, (yo, ssk) x 3, k4, m1L, k1, (k2tog, yo) x 2, k3, (yo, ssk) x 2, k1, k2tog, k1.
row 10 (WS): sl 1, k1, p13, k4, p15, k to end slipping m.
row 11 (RS): work to m, slip m, k17, (k2tog, yo) x 3, k3, (yo, ssk) x 3, k6, yo, (k2tog, yo) x 2, k1, (yo, ssk) x 3, k2tog.
row 12 (WS): sl 1, p13, k5, p15, k to end slipping m.
rows 13 to 40: work rows 13 to 40 from chart D (see previous page)

In the last repeat there are only 10 sts left before the newly placed marker in row 1. FYI: I worked 3 more repeats of chart E (= a total of 4 repeats) (10 sts were left before m)

CHART F (FINAL LEAF) chart page 6

row 1 (RS): sl 1, k1, yo, k2tog, (k2tog, yo) x 2, k1, yo, ssk removing old m, yo, k3, (k2tog, yo) x 3, k3, (yo, ssk) x 3, k2tog, k1, k2tog, yo, k1, yo, ssk, k2tog.
row 2 (WS): sl 1, p5, k2, p15, k2, p9, k4.
row 3 (RS): sl 1, k2, (k2tog, yo) x 2, k3, yo, ssk, yo, k4, (k2tog, yo) x 3, k1, (yo, ssk) x 3, k1, k2tog, k4, k2tog.
row 4 (WS): sl 1, p3, k2, p15, k2, p11, k3.
row 5 (RS): sl 1, k1, (k2tog, yo) x 3, k1, (yo, ssk) x 2, yo, k3, (k2tog, yo) x 3, k3, (yo, ssk) x 3, k2tog, k2, k2tog.
row 6 (WS): sl 1, p1, k2, p15, k2, p13, k2.
row 7 (RS): sl 1, k2, (k2tog, yo) x 2, k3, (yo, ssk) x 2, k6, yo, (k2tog, yo) x 2, k1, (yo, ssk) x 3, k1, CDD, k1.
row 8 (WS): sl 1, k2, p13, k4, p13, k2.
row 9 (RS): sl 1, k1, (k2tog, yo) x 3, k1, (yo, ssk) x 3, k4, m1L, k1, (k2tog, yo) x 2, k3, (yo, ssk) x 2, k1, k2tog, k1.
row 10 (WS): sl 1, k1, p13, k4, p15, k1.
row 11 (RS): sl 1, (k2tog, yo) x 3, k3, (yo, ssk) x 3, k6, yo, (k2tog, yo) x 2, k1, (yo, ssk) x 3, k2tog.
row 12 (WS): sl 1, p13, k5, p15, k1.
row 13 (RS): sl 1, k1, (k2tog, yo) x 3, k1, (yo, ssk) x 3, k7, (k2tog, yo) x 2, k3, (yo, ssk) x 2, k2tog.
row 14 (WS): sl 1, p11, k6, p15, k1.
row 15 (RS): sl 1, (k2tog, yo) x 3, k3, (yo, ssk) x 2, yo, k9, (k2tog, yo) x 2, k1, (yo, ssk) x 2, k2.
row 16 (WS): sl 1, p11, k7, p15, k1.
row 17 (RS): sl 1, k1, (k2tog, yo) x 3, k1, (yo, ssk) x 3, k8, (k2tog, yo) x 2, k3, (yo, ssk) x 2, k1.

LEAF TIP WITH SHORT ROWS

row A (WS): sl 1, p11, turn.
row B (RS): DS, (k2tog, yo) x 2, k1, (yo, ssk) x 2, k2tog.
row C (WS): sl 1, p9, turn.
row D (RS): DS, k2tog, yo, k3, yo, ssk, k2tog.
row E (WS): sl 1, p7, turn.
row F (RS): DS, k2tog, yo, k1, yo, ssk, k2tog.
row G (WS): sl 1, p5, turn.
row H (RS): DS, CDD, k2tog.
row I (WS): sl 1, p1, turn.
row J (RS): DS, k1.
row K (WS): bind off purlwise and loosely 12 sts.

row 18 (WS): (1 st from bind off on right needle) p15, k1.
row 19 (RS): sl 1, (k2tog, yo) x 3, k3, (yo, ssk) x 3, k1.
row 20 (WS): sl 1, p15, k1.
row 21 (RS): sl1, k1, (k2tog, yo) x 3, k1, (yo, ssk) x 3, k2.
row 22 (WS): sl 1, p15, k1.
row 23 (RS): sl 1, (k2tog, yo) x 3, k3, (yo, ssk) x 3, k1.
row 24 (WS): sl 1, p15, k1.
row 25 (RS): ssk, (k2tog, yo) x 3, k1, (yo, ssk) x 3, k2tog.
row 26 (WS): sl 1, p13, k1.
row 27 (RS): sl1, k1, (k2tog, yo) x 2, k3, (yo, ssk) x 2, k2.
row 28 (WS): sl 1, p13, k1.
row 29 (RS): sl 1, (k2tog, yo) x 3, k1, (yo, ssk) x 3, k1.
row 30 (WS): sl 1, p13, k1.
row 31 (RS): ssk, (k2tog, yo) x 2, k3, (yo, ssk) x 2, k2tog.
row 32 (WS): sl 1, p11, k1.
row 33 (RS): sl 1, k1, (k2tog, yo) x 2, k1, (yo, ssk) x 2, k2.

row 34 (WS): sl 1, p11, k1.
 row 35 (RS): sl 1, (k2tog, yo) x 2, k3, (yo, ssk) x 2, k1.
 row 36 (WS): sl 1, p11, k1.
 row 37 (RS): ssk, (k2tog, yo) x 2, k1, (yo, ssk) x 2, k2tog.
 row 38 (WS): sl 1, p9, k1.
 row 39 (RS): ssk, k2tog, yo, k3, yo, ssk, k2tog.
 row 40 (WS): sl 1, p7, k1.
 row 41 (RS): ssk, k2tog, yo, k1, yo, ssk, k2tog.
 row 42 (WS): sl 1, p5, k1.
 row 43 (RS): ssk, k3, k2tog.
 row 44 (WS): sl 1, p3, k1.
 row 45 (RS): sl 1, CDD, k1.
 row 46 (WS): sl 1, p1, k1.
 Break yarn and thread it through the remaining stitches. Weave in end.



Copyright? My designs and patterns are for personal and non-profit use only. You can make them for yourself or as a gift. But you may not sell items made from these patterns and may not sell the pattern itself. If you have any questions, please ask. Thanks. Enjoy your knitting.