

Princess Swan Shawl

Design by Yulia Zakhlebina

<http://www.ravelry.com/designers/yulia-zakhlebina>

<http://streckozylia.blogspot.ru/>

Translation from the Russian original by
Elena Maltseva

<http://www.ravelry.com/people/klubokispitsi>

Materials

Yarn:

About 60g of lace weight yarn (100% wool), 1613m /100g skein.

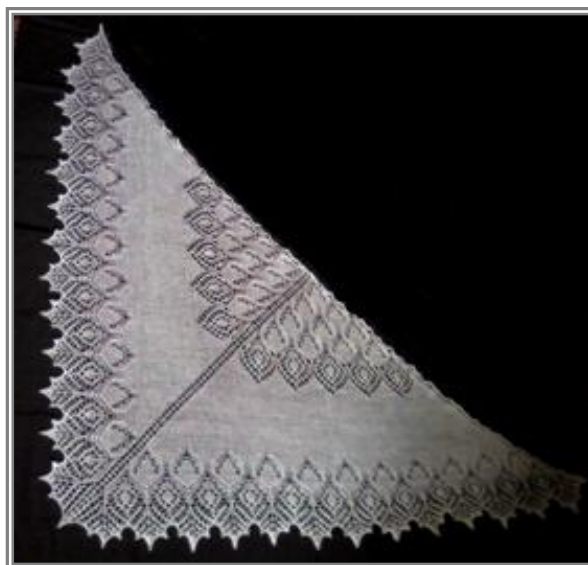
Note: the shawl is knitted with double strand of yarn held together.

Needle:

US 2½ (3 mm) needles or size needed to obtain gauge.

Notions

crochet hook and scraps of yarn (for provisional cast on)
4 markers
blocking tools



Gauge (after blocking):

In Lace: 15 sts x 24 rows = 10 x 10 cm

In Stockinette Stitch: 16 sts x 28 rows = 10 x 10 cm

Finishing size:

Width (at the top edge) 187 cm

Length (along the center stitch) 87 cm

Depending on the yarn weight and needle sizes, you can make a smaller or larger shawl.

The beginning of the shawl is at the center top edge. Increases along the center stitch and the edges create triangular shape of the shawl.

Note:

First 2 and last 2 stitches of each row – knit in all rows (selvage stitches)

Center stitch – RS rows: knit, WS rows – purl.

The charts show one half of the shawl only. Knit all the charts as follows:

2 selvage stitches, knit acc to chart till center stitch, center stitch, knit acc to chart till last 2 stitches, 2 selvage stitches.

Charts show RS rows only.

All WS rows – purl, except for selvage stitches.

Shawl

Using provisional cast on method, CO 2 stitches: using provisional yarn with a crochet hook make a chain of 4, then with main yarn pick up and knit 2 stitches knitting in the bumps on the back of the chain. Knit for 17 rows. At the end of row 17 turn your work 90° clockwise, pick up and knit 7 stitches along the longer side of the strip. Undo the provisional yarn and pick up the two open stitches onto the left-hand needle and knit them (11 stitches on right-hand needle).

Princess Swan Shawl

© 2013 Design by Yulia Zakhlebina, yuliazakh.designs@gmail.com

Pattern for personal use only. Free pattern, not for sale.

Next row (WS): K2, PM, P3, PM, P1, PM, P3, PM, K2

Markers are indicating the center stitch and the selvage stitches.

Lace Part

Rows 1-14 – follow **chart 1**

Rows 15-50 – follow **chart 2**

Rows 51-80 – follow **chart 3**

After finishing chart 3 the total number of stitches should be 171 sts.

Stockinette Stitch

Beginning from Row 81 repeat rows 79 and 80 of chart 3 21 times (42 rows of Stockinette Stitch). When you have 255 stitches on your needles, begin knitting the edging.

Edging

Rows 1-32 – follow **chart 4**

Rows 33-38 – follow **chart 5**.

Row 39 – BO all stitches loosely.

Finishing

Weave in the ends. Block the shawl.

Symbols

■ Knit

☐ Purl

○ YO

∞ Ktbl (knit through the back loop)

▲ K2tog

▴ SSK

▲ Sl1, K2tog, PSSO

⌘ Make 3 out of 1: Knit, YO, Knit

☐ No Stitch

▲ Method 1: SSK, transfer this stitch onto the left-hand needle, and slip the stitch to the left of it over this stitch, return the stitch back onto the right-hand needle
or Method 2: K3tog

2<3 make 2 out of 3 (k2tog, do not slip these stitches of the right-hand needle, knit 2-nd and 3-d stitches together through the back loop).

Chart 1

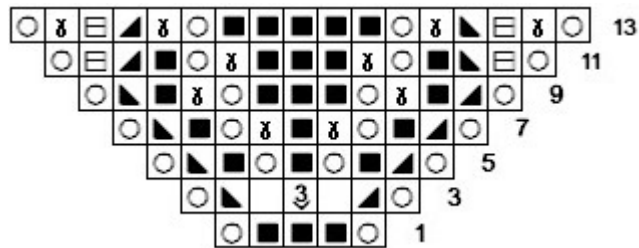


Chart 2

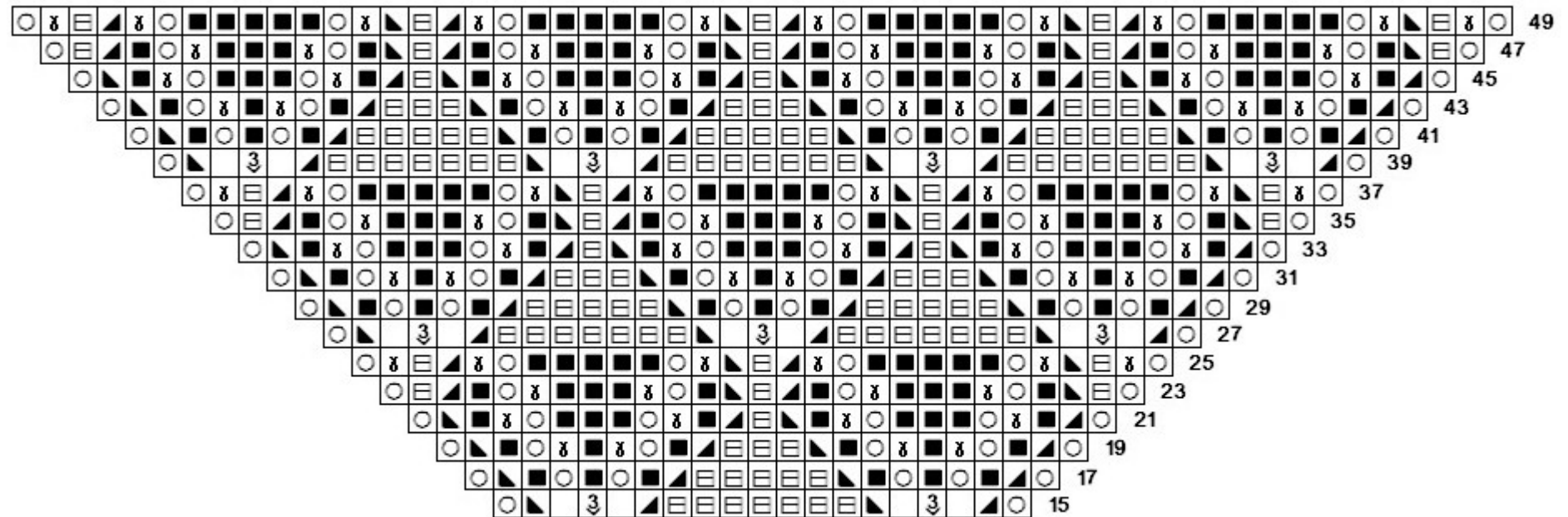


Chart 3

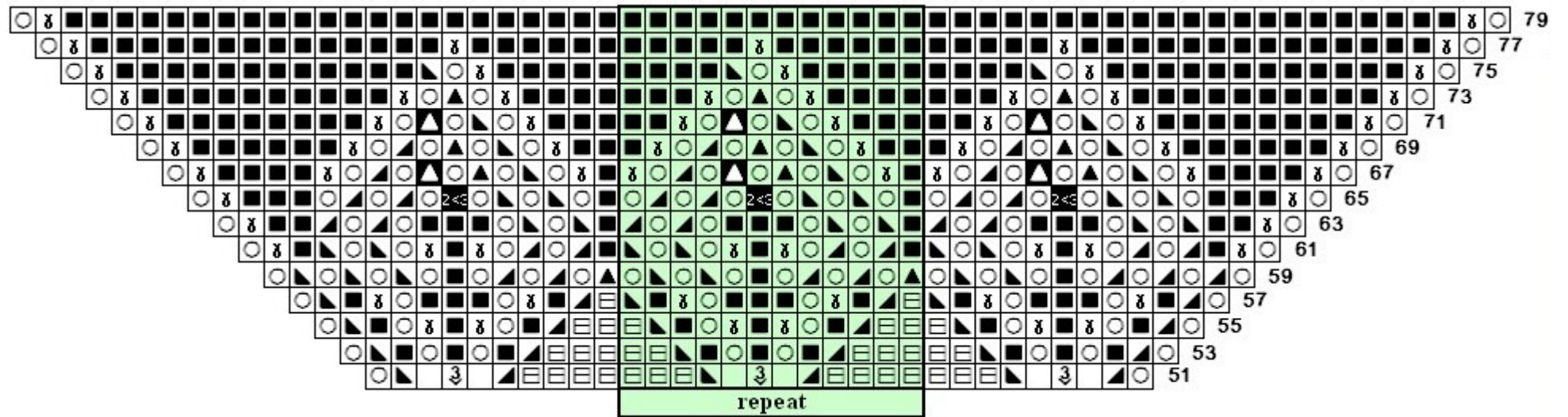


Chart 4

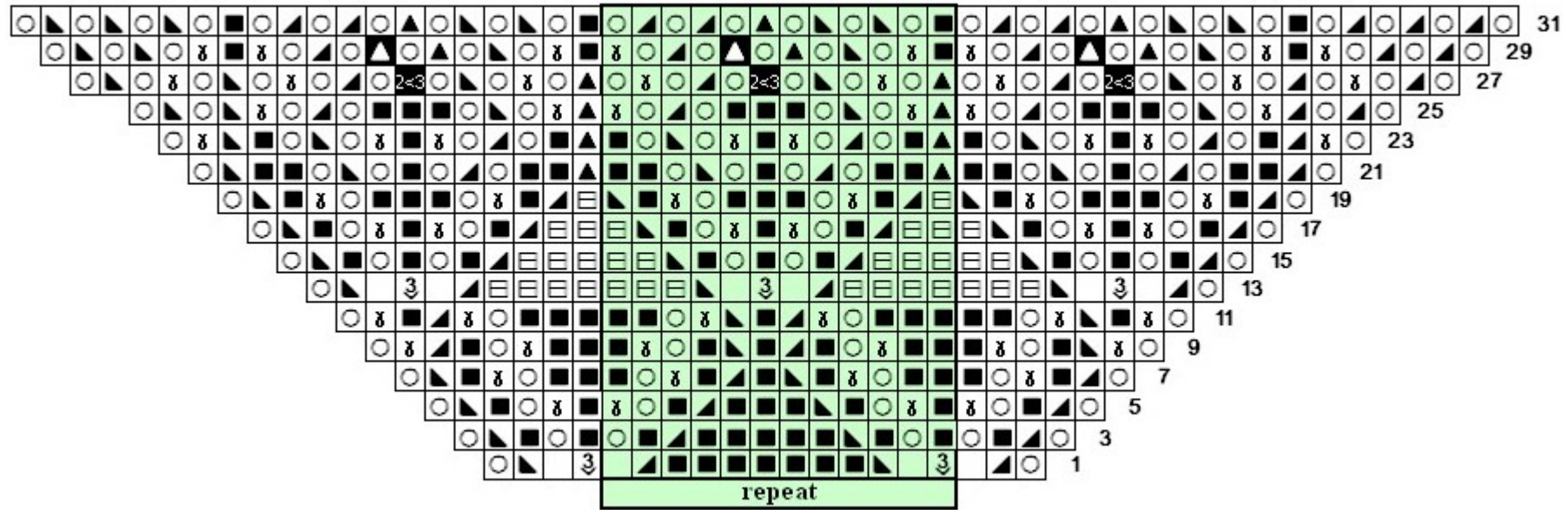
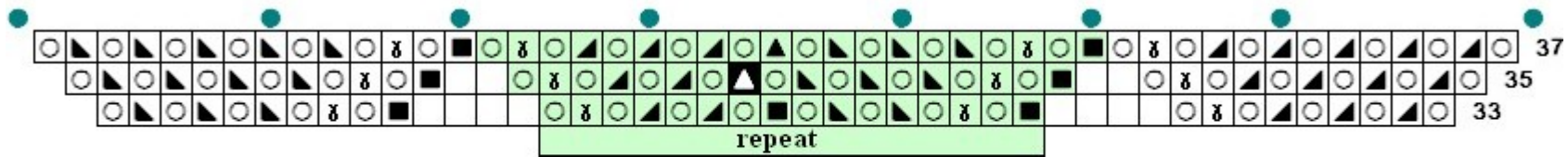


Chart 5



● points for blocking