

# Sea Willow Shawl

By Denise E. M. Bartels

Yarn -  
Laceweight. I  
used handspun  
(fiber is  
Homestead  
Hobbyist's  
Merman blend).

Yardage -  
Approximately  
1125 yards.

Needles - I  
used US size 1  
but I knit very  
loosely.

Depth at Center  
- 31 inches.

Length - 65  
inches.



This shawl is a triangle worked from the top down with increases occurring at each side and on either side of the middle stitch. The two sides are mirror images of each other, necessitating separate charts for the right and left halves of the shawl. The main stitch is an Estonian stitch, the willow leaf (pajulehekiri).

The shawl is started with a tab cast on. I like a seed stitch edging instead of a garter stitch one because the gauge is closer to the stockinette gauge. So cast on 5 stitches and knit 6 rows of k1, p1, k1, p1, k1. On the seventh row, k1, p1, k1, p1, k1, turn work 90 degrees and pick up 3 stitches along the side of the little tab you just made, turn another 90 degrees and pick up 5 stitches along the cast on edge in seed stitch. You can also use a provisional cast on instead.

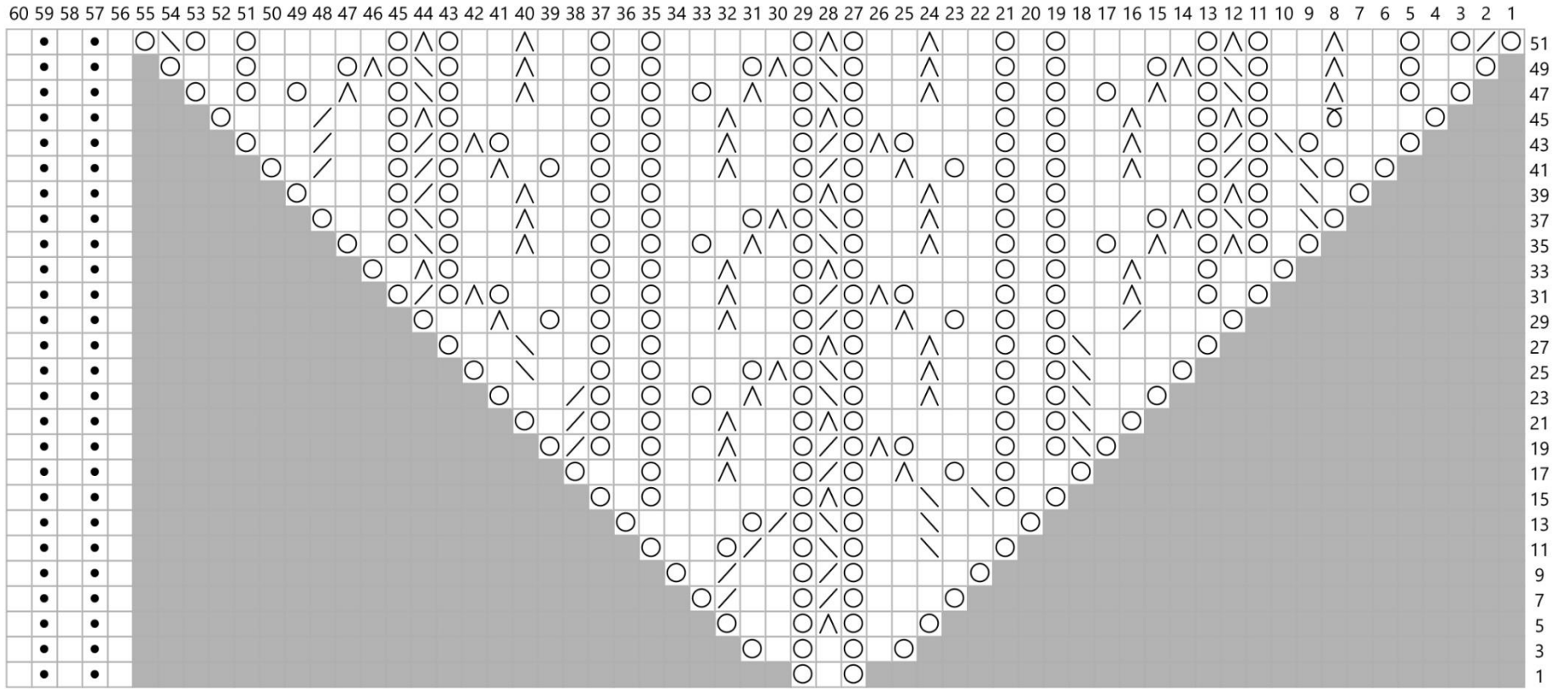
For each row, you start on the right chart and then switch to the left chart for that row after knitting the middle stitch. The basic pattern does not change, the numerous charts are to deal with the edges as stitches are added. All even rows are k1, p1, k1, p1, k1, purl to last 5 stitches, k1, p1, k1, p1, k1 with the exception of the even rows 202 - 216 where the nupps of the previous row are purled 7 together.

Start row 1 on charts 1 right and 1 left. On row 52 start charts 2 right and left. Charts 3 start on row 91, charts 4 row 123, charts 5 row 161, charts 6 row 197, and charts 7 row 233.

When charts 7 have been completed, bind off loosely and block.

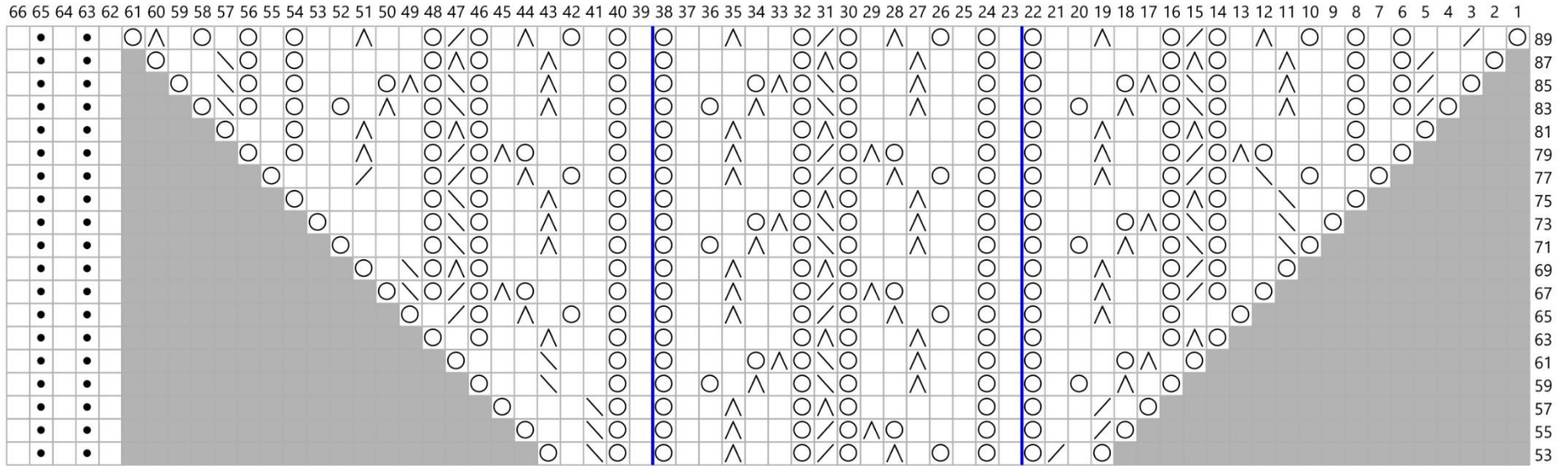


# Chart 1 Left

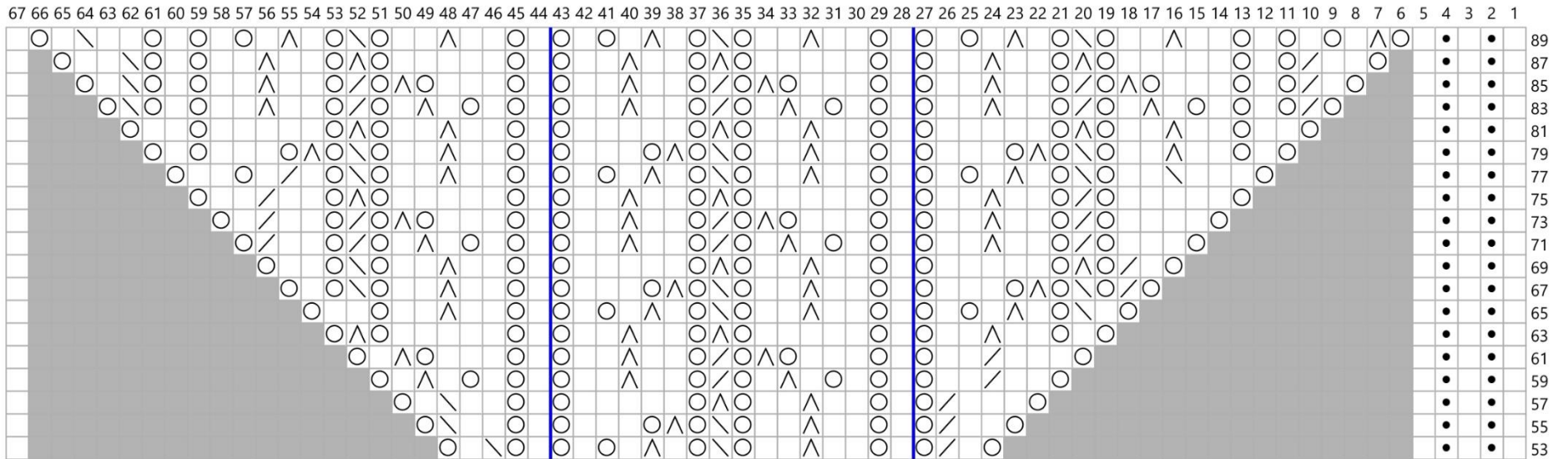




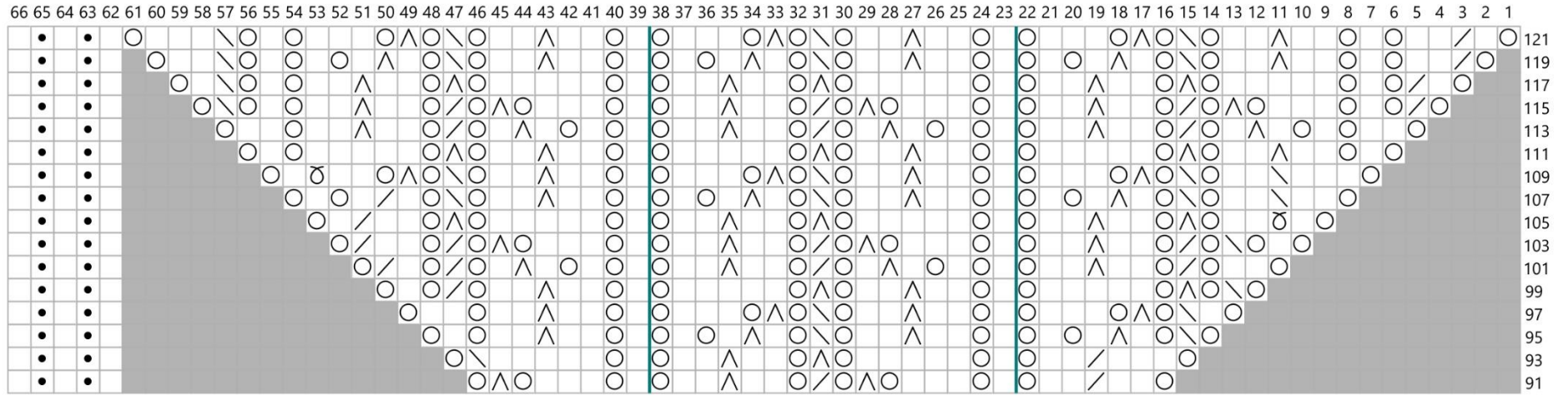
### Chart 2 Left



### Chart 2 Right



### Chart 3 Left



### Chart 3 Right

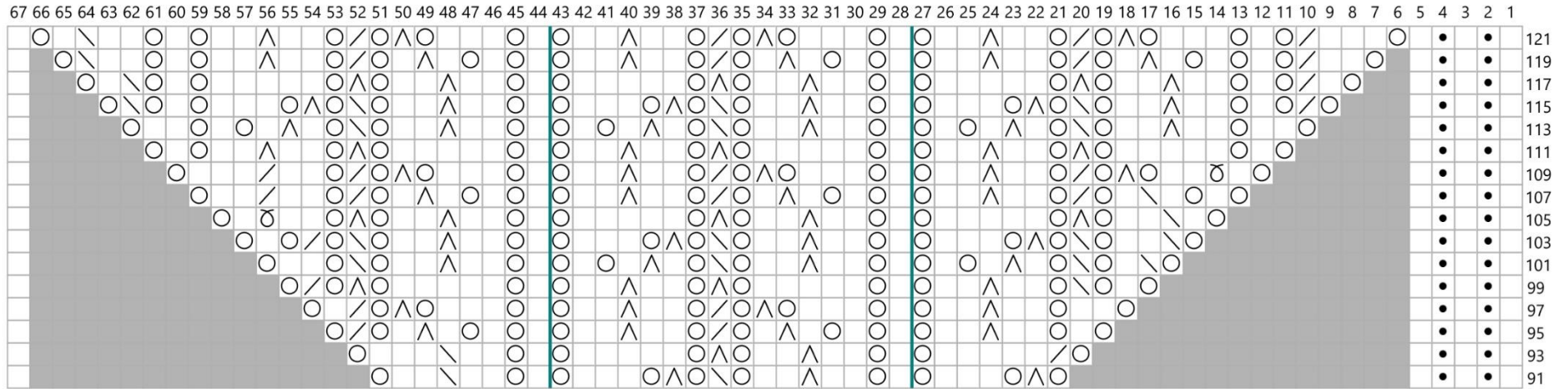


Chart 4 Left

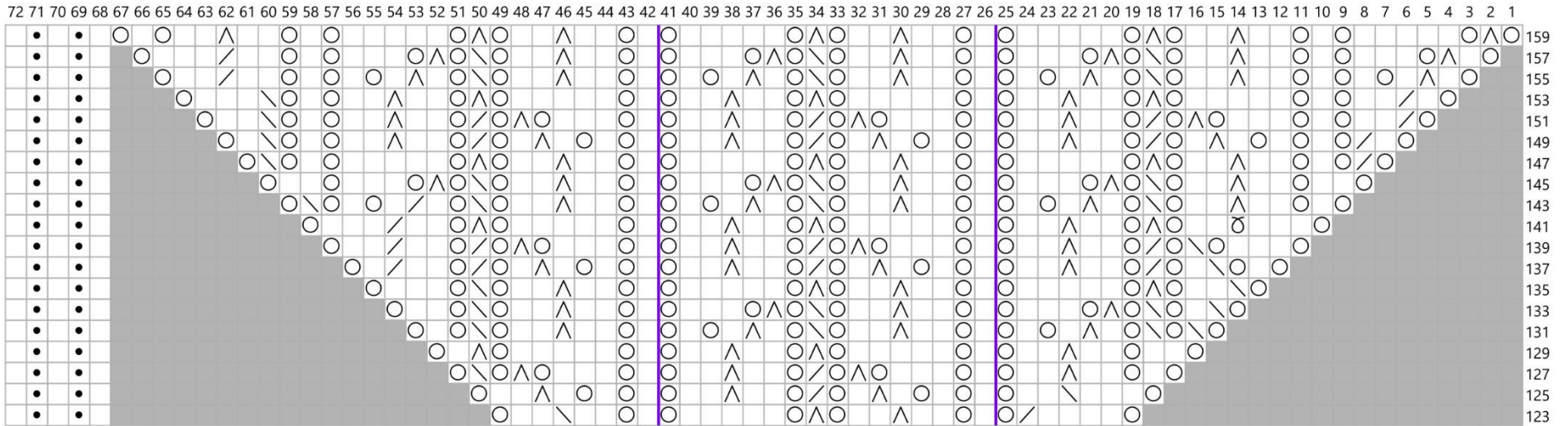


Chart 4 Right

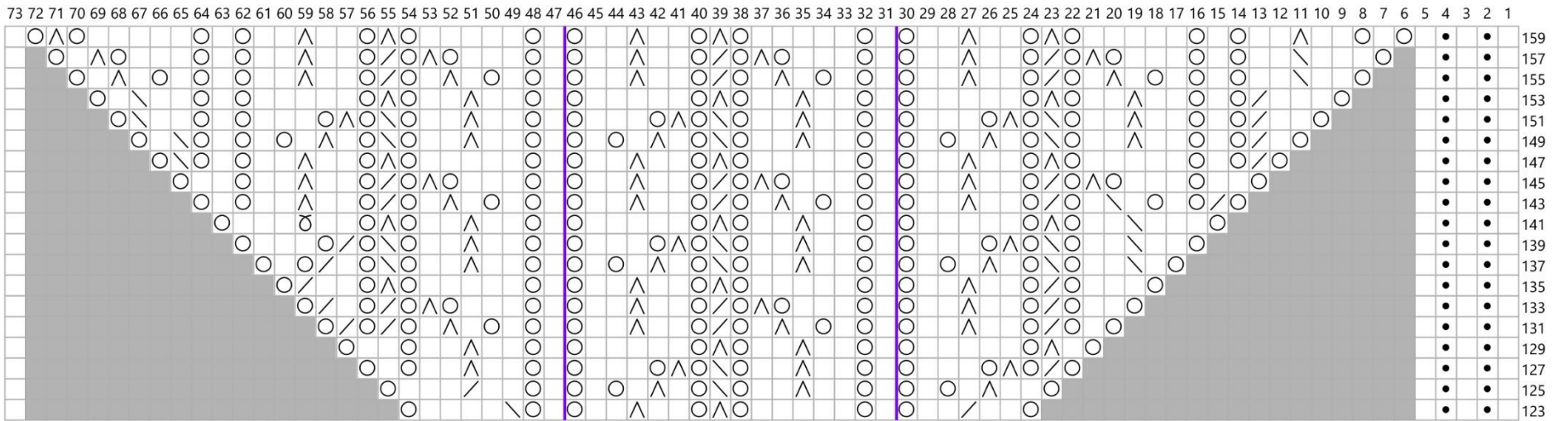


Chart 5 Left

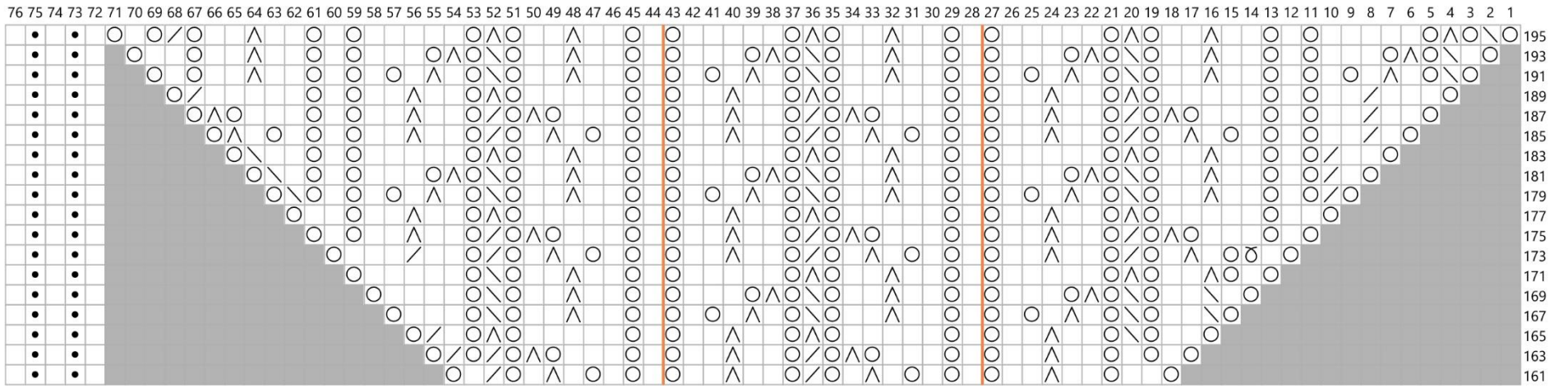


Chart 5 Right

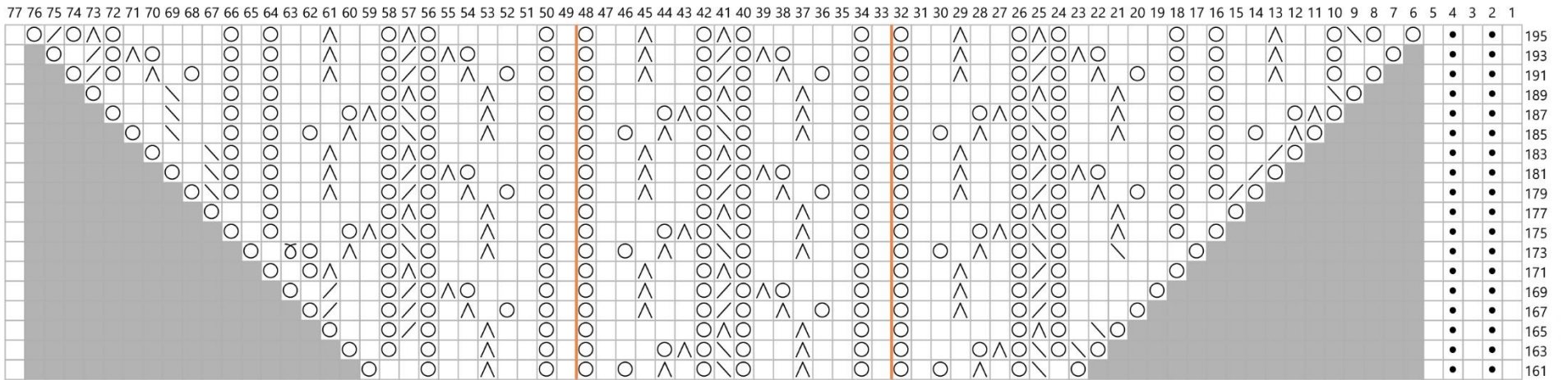




Chart 6 Left

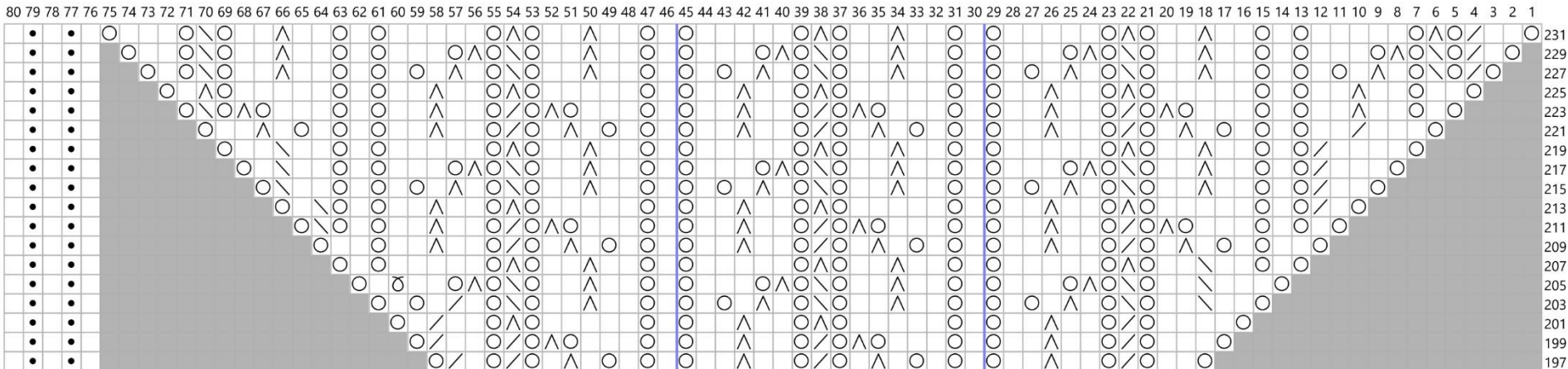


Chart 6 Right

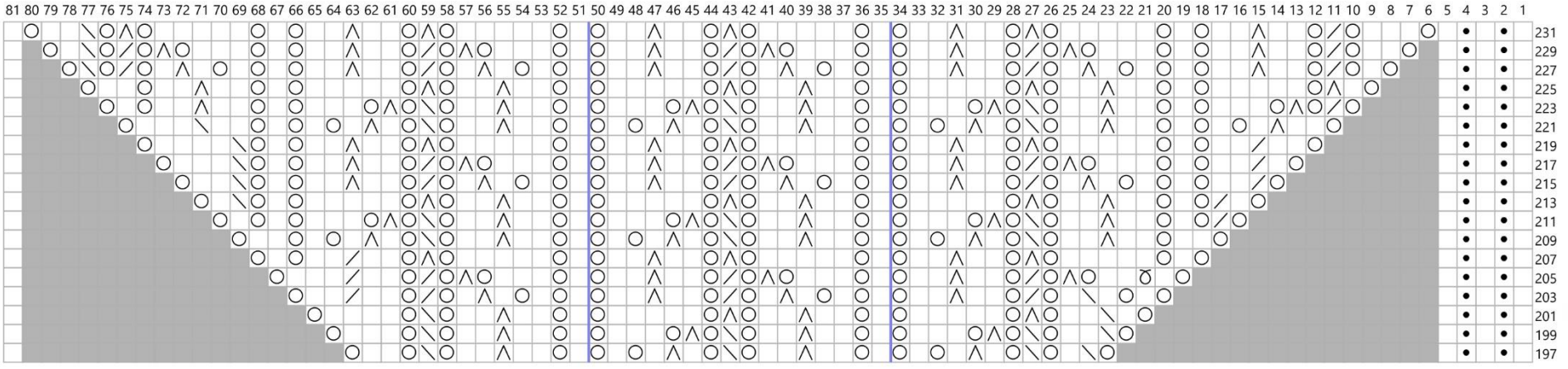


Chart 7 Left

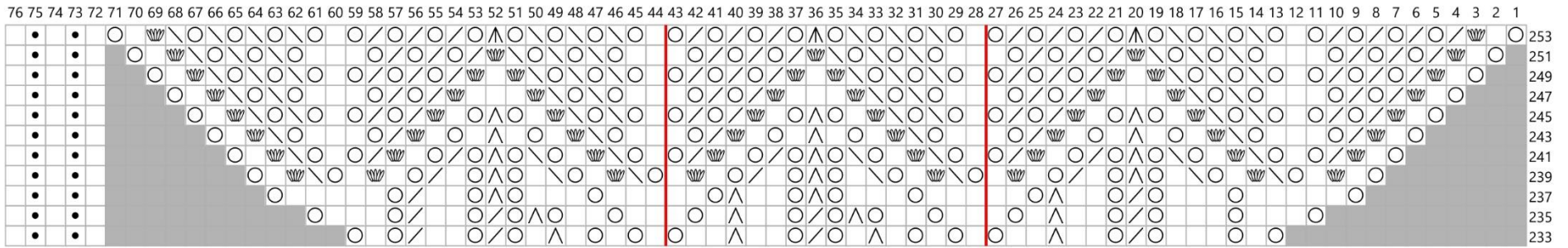
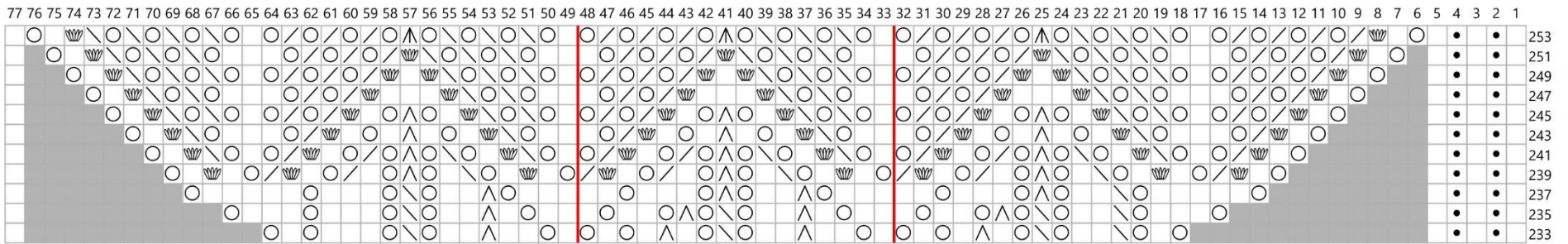


Chart 7 Right



**Key**

knit	yo	ssk
sl1, k2tog, psso	k2tog	grey no stitch
m1	7 stitch nupp	sl2, k1, psso
repeat 13 times	repeat 11 times	repeat 9 times
repeat 7 times	repeat 5 times	repeat 3 times
purl		

