

Fishermens Windsbraut

Material needed:

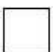



700m colourgradient yarn 4-ply, meterage app. 375m/100g

Used: Lagune by Michi's Farbwollträume

<https://www.facebook.com/groups/1657860824459172/>

Circular needle 3,5mm 100cm long

Legend:

| | |
|---|--|
|  | Knit, RS knit, WS purl |
|  | Purl, RS purl, WS knit |
|  | YO, this yo is done in the WS row and knitted in the RS row |
|  | P2tog, this stitch is done in the WS row and knitted in the RS row |

The chart always shows all stitches as they appear from the right side. Right and wrong side rows are shown in the chart. I have started the pattern 2 stitches after the selvage edge and is completed logical with the increases.

The shape of the shawl develops itself by in- and decreases which are not shown in the charts, they are worked on the complete length of the shawl.

RS: double the first stitch (kfb), knit the last 2 stitches together

WS: double the second last stitch (kfb)

Borderstitches:

RS: they are worked with in- and decrease

WS: slip with yarn in front

Start:

Cast on 8 stitches

Set-up row 1: double the first stitch, purl till 2 stitches and knit them together

Set-up row 2: slip first stitch with yarn in front, knit till 2 stitches, double the first stitch and slip the second one with yarn in front.

From this point we will work with pattern as described (don't forget in- and decreases):

pattern 1: 78 rows (chart 1)

lacepattern (see chart)

pattern 2: 24 rows (chart 2)

lacepattern

pattern 3: once chart 3

lacepattern

pattern 4: 16 rows (chart 4)

lacepattern

chart 5: once chart 5

lacepattern

pattern 6: 20 rows (chart 6), after 8 rows start adding the anchor, start the pattern 40 stitches before the end of the row.

Between pattern 6 and 7 work the lacepattern, the anchor extends from pattern 6 to pattern 7 and the lacepattern.

pattern 7: 22 rows (chart 7) Attention: continue the chart by retaining the knit and purl stitches after the anchor.

lacepattern

pattern 8: once chart 8

lacepattern

pattern 9: 12 rows (chart 9)

lacepattern

pattern 10: once chart 10

lacepattern

pattern 11: 22 rows same as chart 4

After row 2 the heart is added, start 30 stitches before the end of the row.

lacepattern

pattern 12: once chart 12

lacepattern

chart 3:

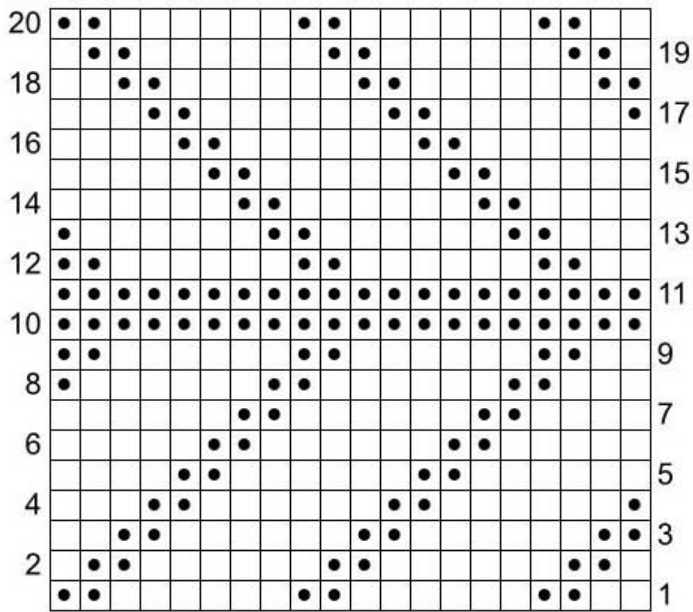


chart 4:

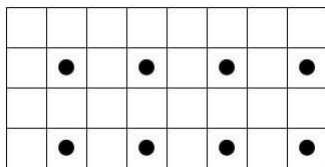


chart 5:

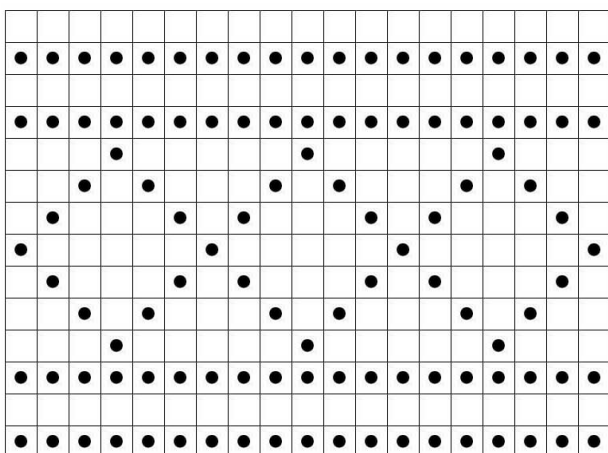


chart 6:

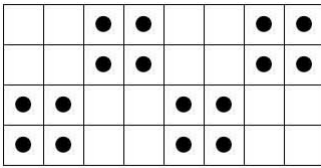


chart 7:

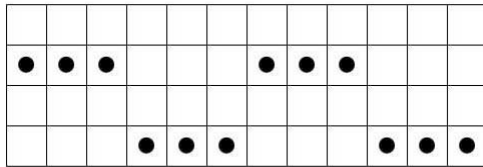


chart 8:

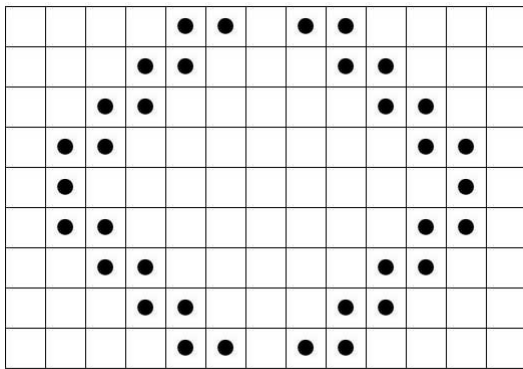


chart 9:

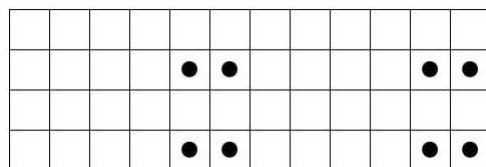
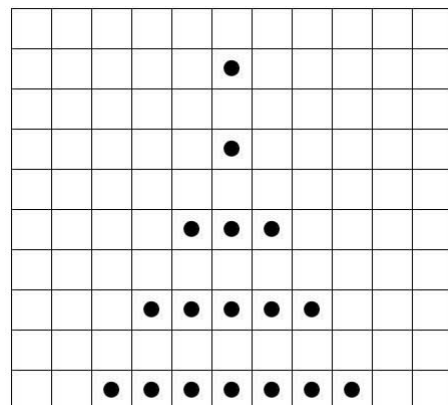


chart 10:



Pattern 11 is the same as pattern 4

chart 12:

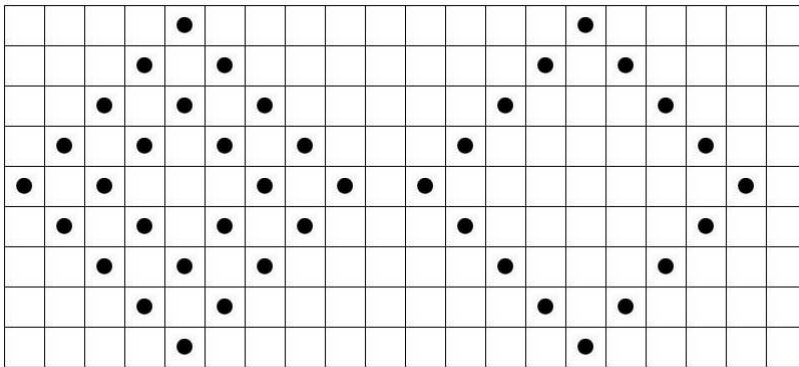
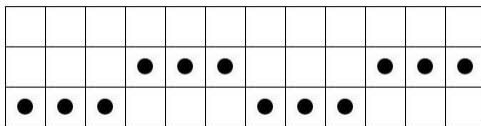
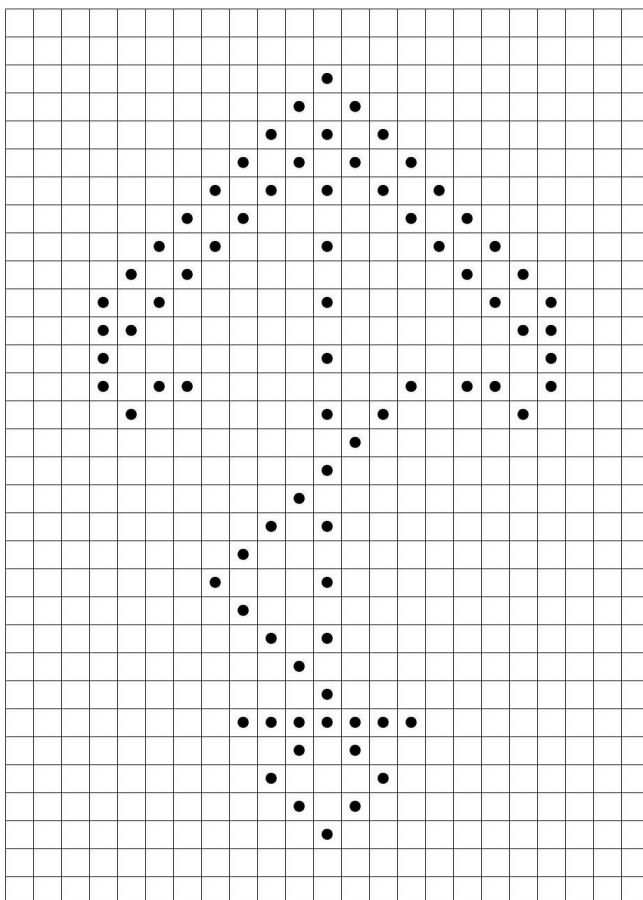


chart 13:



anchor:



heart:

