

Heaven and Earth Designs

Easter Blessings

Chart No: HAEKK 04

Chart Design by Michele Sayetta

Artwork by Katerina Koukiotis



Finished Design Size 350 W by 440 H (14-WX 17-1/2 H inches on 25ct)

Heaven and Earth Designs LLC

1373 45th Ave SW

Willmar MN 56201

320-214-7998

www.heavenandearthdesigns.com

Copyright Heaven and Earth Designs 2009

Copyright Katerina Koukiotis 2009

Instructions

The model for Easter Blessings is recommended to be stitched over 1 on 25 count Dublin Linen. Please use 1 strand of floss or 2 depending on your coverage preference. Charts are recommended to be stitched from page 1 top left to the last page bottom right.

It is recommended that you make working copies and enlarge to view detail and symbols.

You may also use the tent stitch or full crosses depending on your preference.

This is a large project that will offer many hours of stitching pleasure.

























We thank you for purchasing this design and welcome any questions or comments that you may have.

Heaven and Earth Designs

Copyright Katerina Koukiotis 2009

Pattern Name: Easter Blessings-Koukiotis
Designed By: Michele Sayetta
Company: Heaven and Earth Designs
Copyright: 2009
Fabric: Linen 25, White
 350w X 440h Stitches
Size: 25 Count, 14w X 17-1/2h in

Floss Used for Full Stitches:

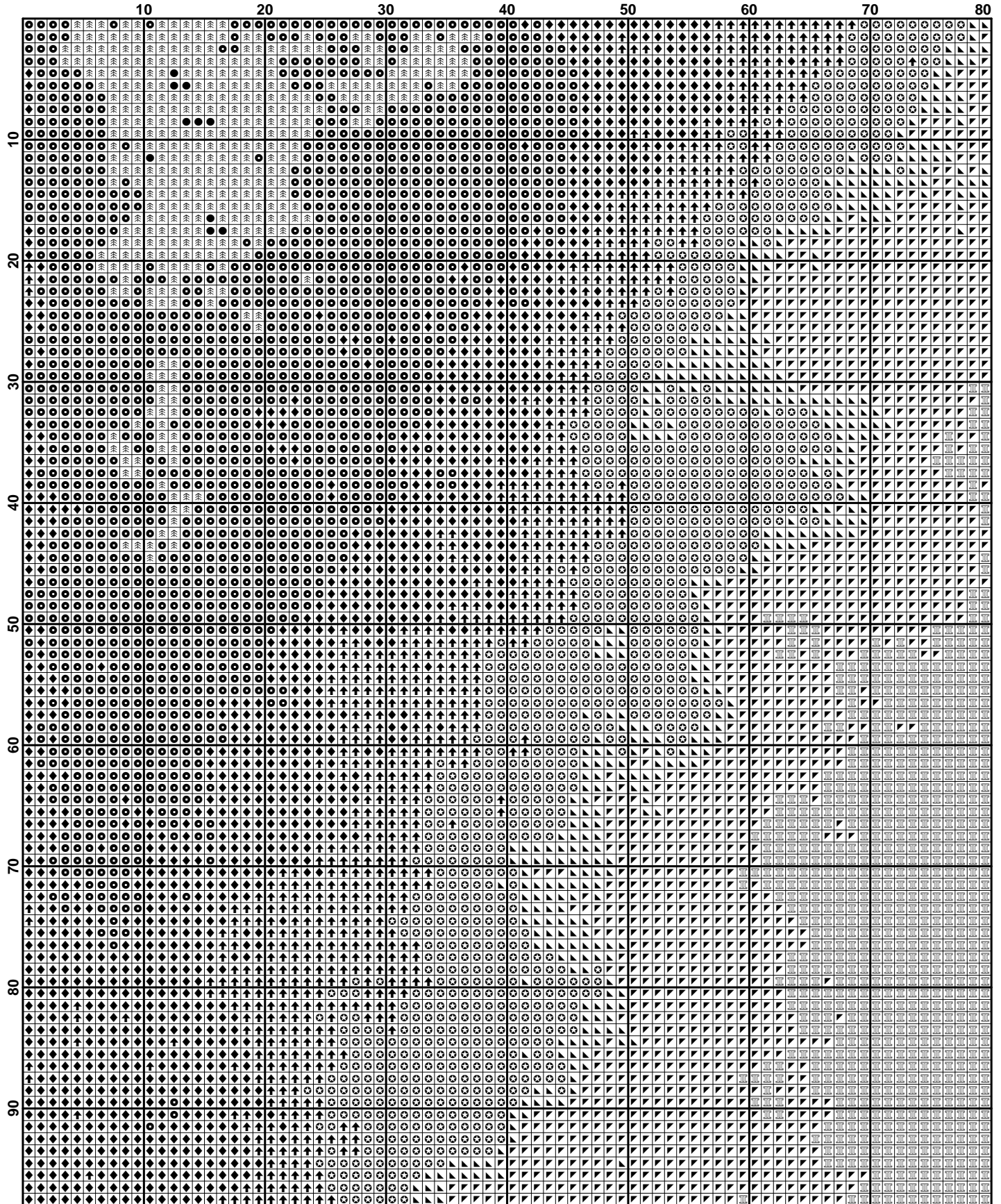
Symbol	Strands	Type	Number	Color
 	2	DMC	168	Pewter-VYLT
 	2	DMC	169	Pewter-LT
 	2	DMC	310	Black
 	2	DMC	317	Pewter Gray
 	2	DMC	318	Steel Gray-LT
 	2	DMC	413	Pewter Gray-DK
 	2	DMC	414	Steel Gray-DK
 	2	DMC	415	Pearl Gray
 	2	DMC	762	Pearl Gray-VYLT
 	2	DMC	3371	Black Brown
 	2	DMC	3799	Pewter Gray-VYDK
 	2	DMC	3865	Winter White

Usage Summary

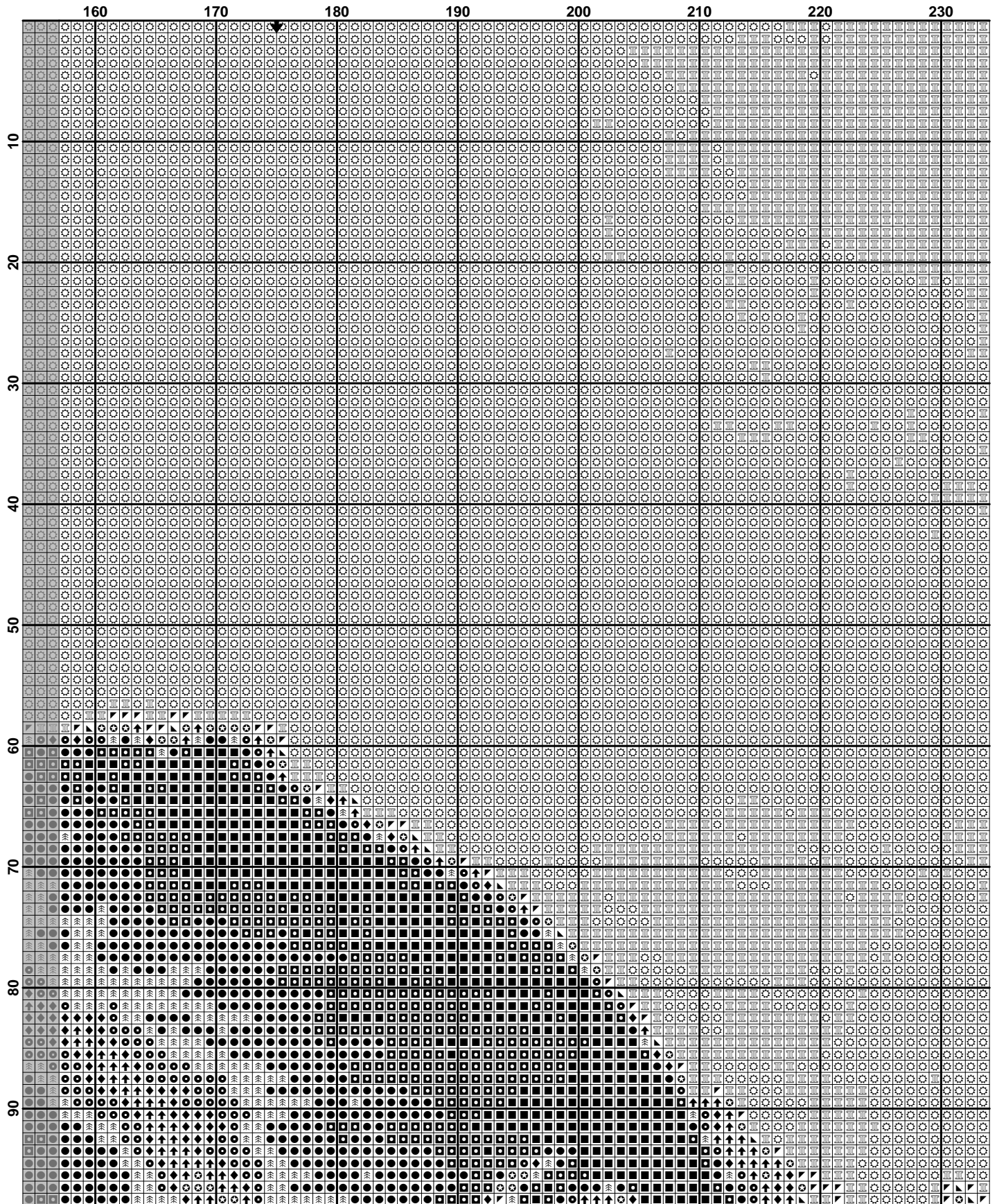
Strands Per Skein: 6

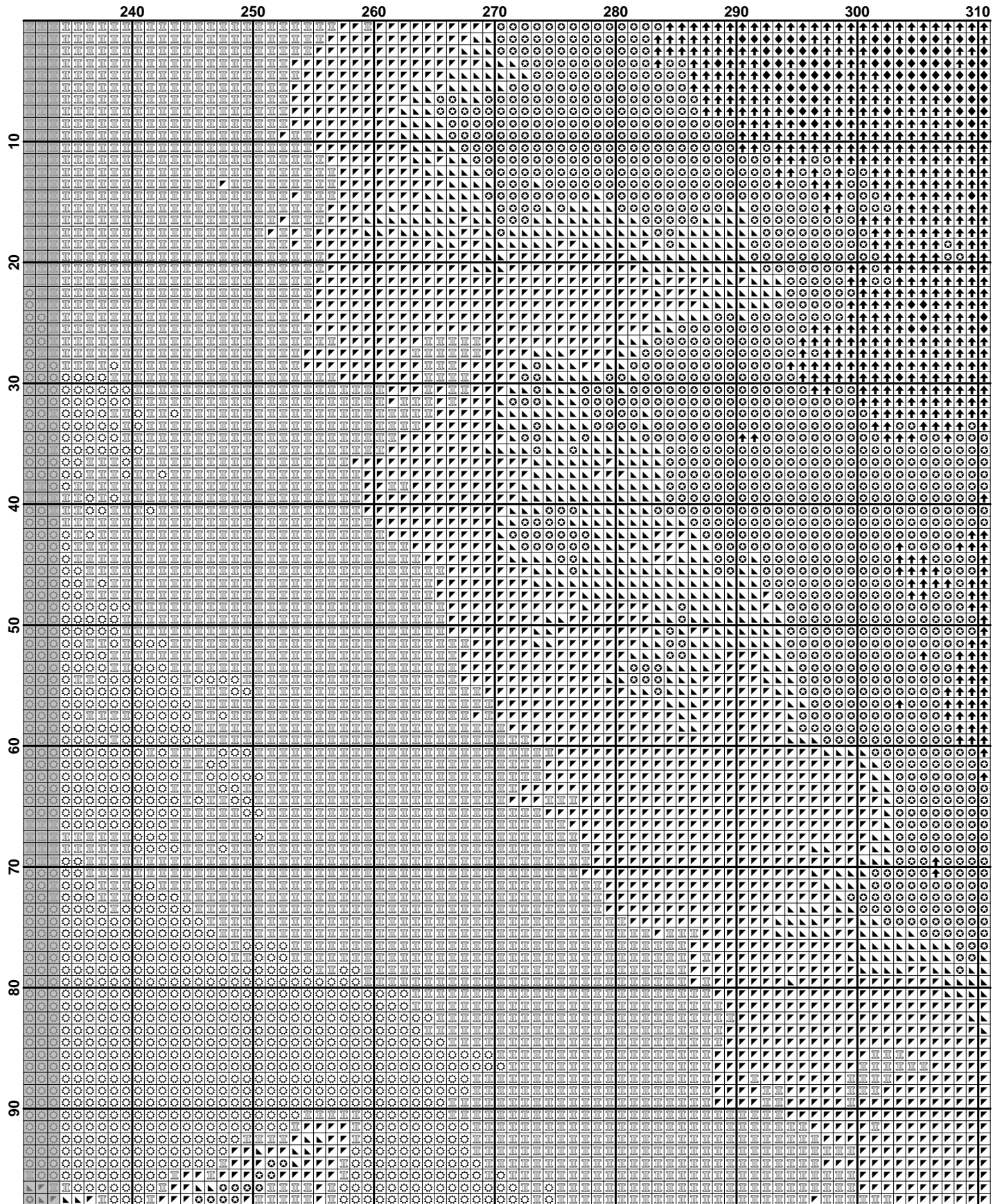
Skein Length: 313.0 in

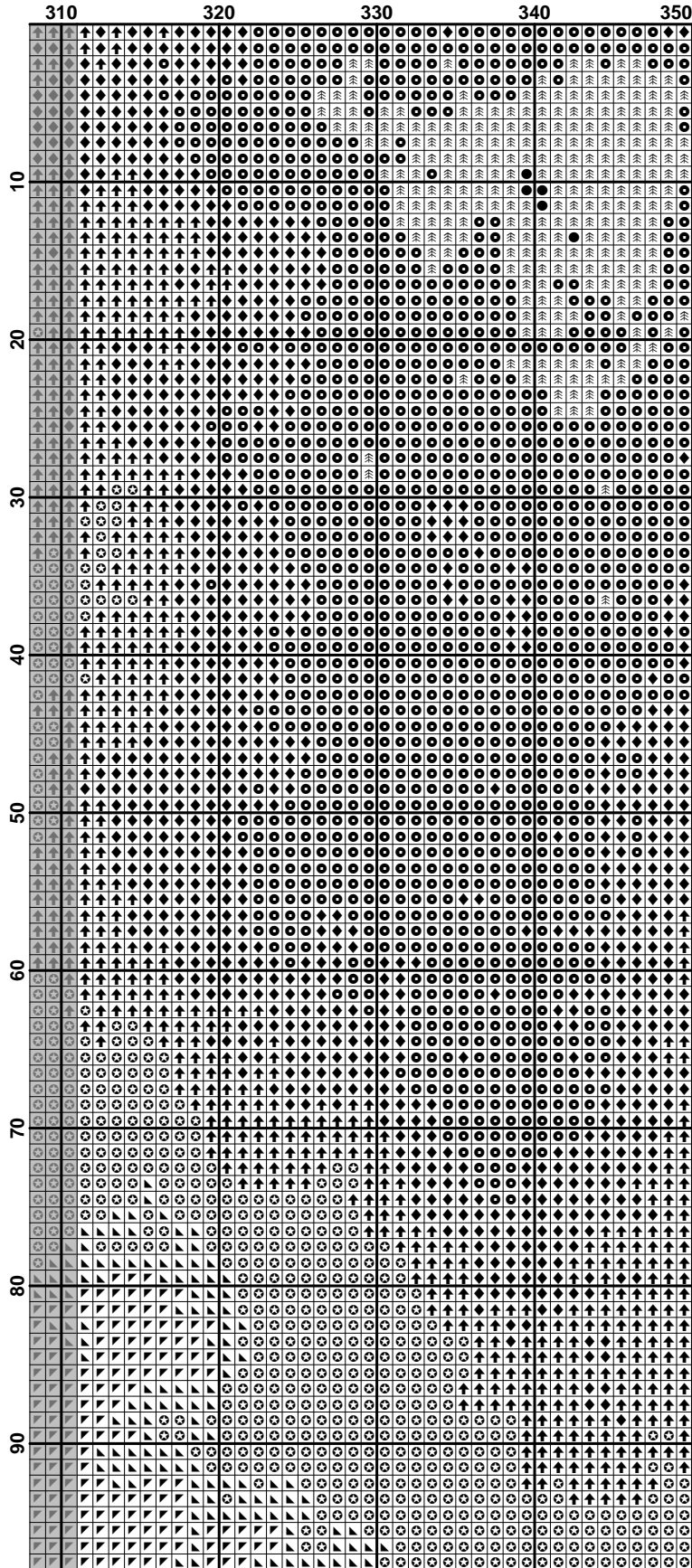
Type	Number	Full	Half	Quarter	Petite	Back(in)	Str(in)	Spec(in)	French	Bead	Skein Est.
■ DMC	168	11296	0	0	0	0.0	0.0	0.0	0	0	4.000
■ DMC	169	11685	0	0	0	0.0	0.0	0.0	0	0	4.000
■ DMC	310	2463	0	0	0	0.0	0.0	0.0	0	0	1.000
■ DMC	317	7323	0	0	0	0.0	0.0	0.0	0	0	2.000
■ DMC	318	22044	0	0	0	0.0	0.0	0.0	0	0	7.000
■ DMC	413	5051	0	0	0	0.0	0.0	0.0	0	0	2.000
■ DMC	414	7885	0	0	0	0.0	0.0	0.0	0	0	3.000
■ DMC	415	31951	0	0	0	0.0	0.0	0.0	0	0	9.000
■ DMC	762	31567	0	0	0	0.0	0.0	0.0	0	0	9.000
■ DMC	3371	3696	0	0	0	0.0	0.0	0.0	0	0	2.000
■ DMC	3799	8772	0	0	0	0.0	0.0	0.0	0	0	3.000
□ DMC	3865	10267	0	0	0	0.0	0.0	0.0	0	0	3.000

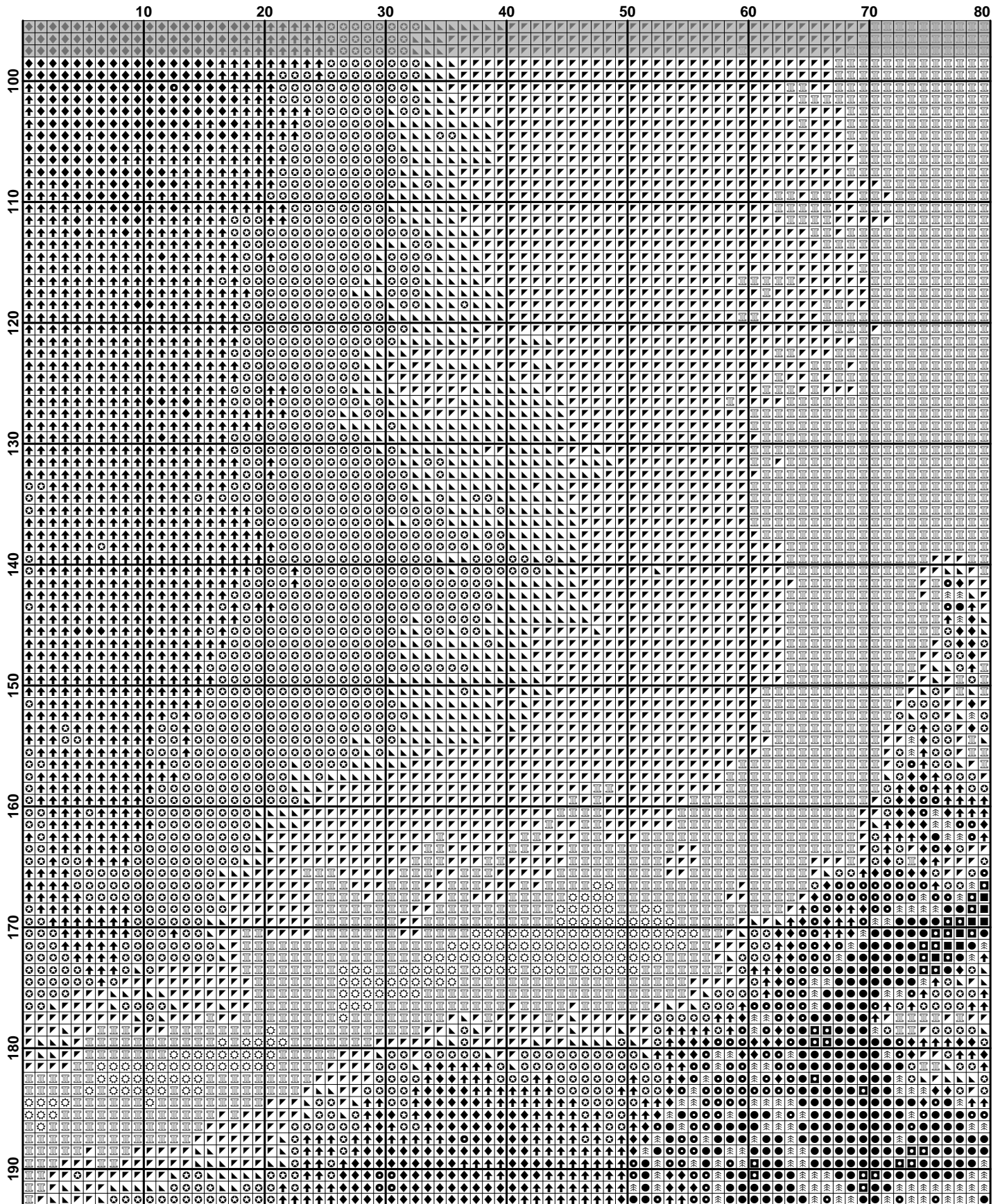


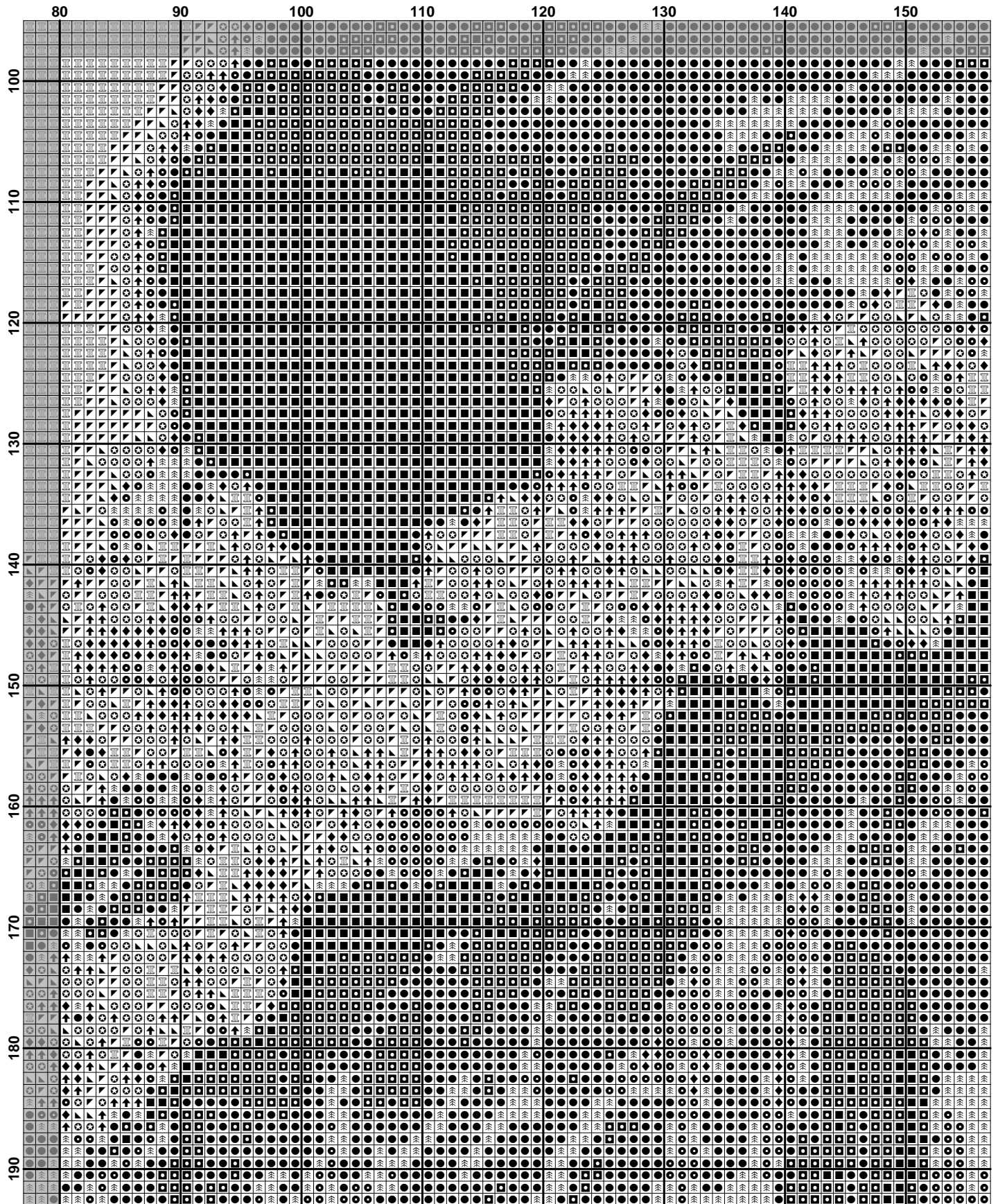


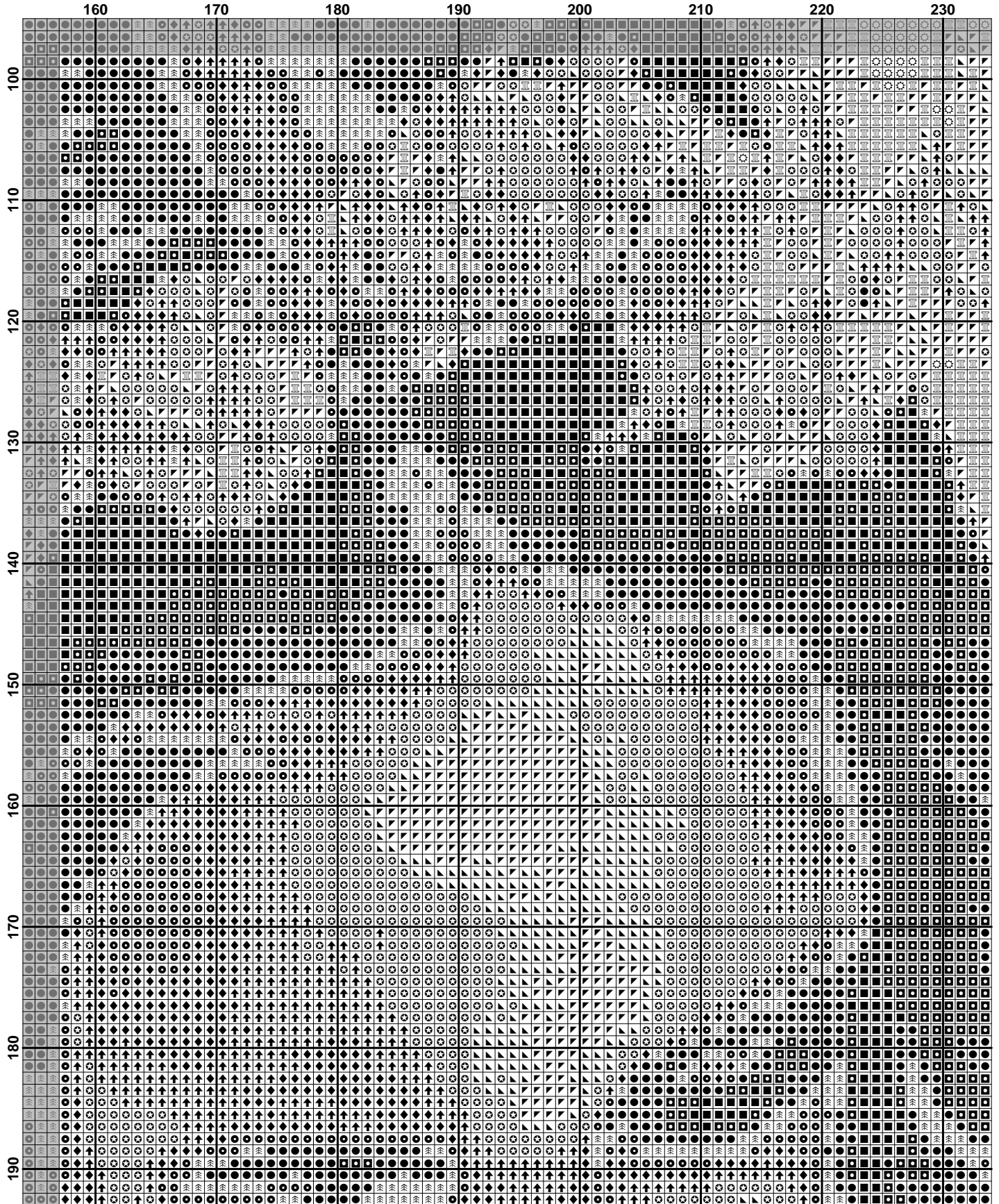


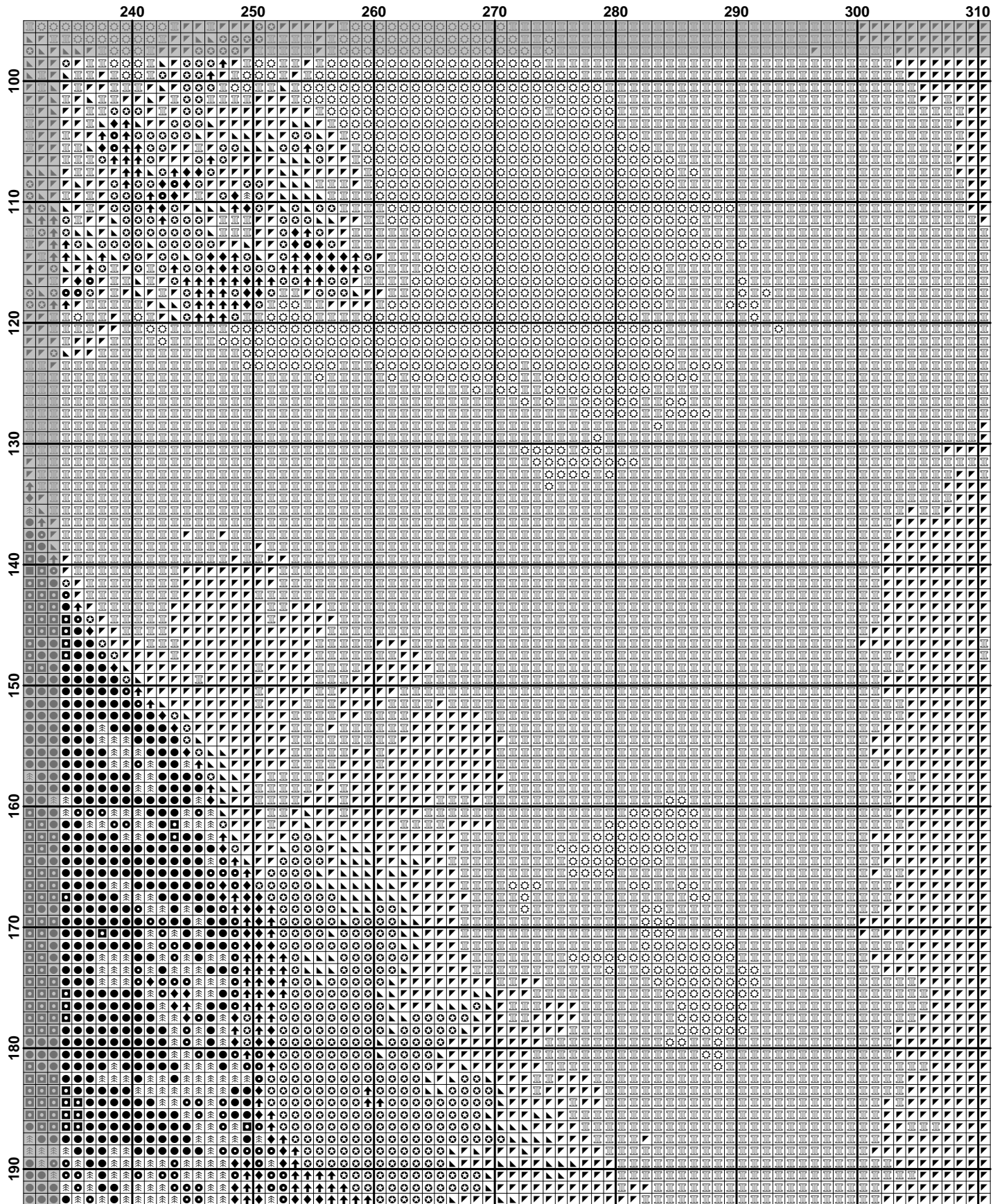






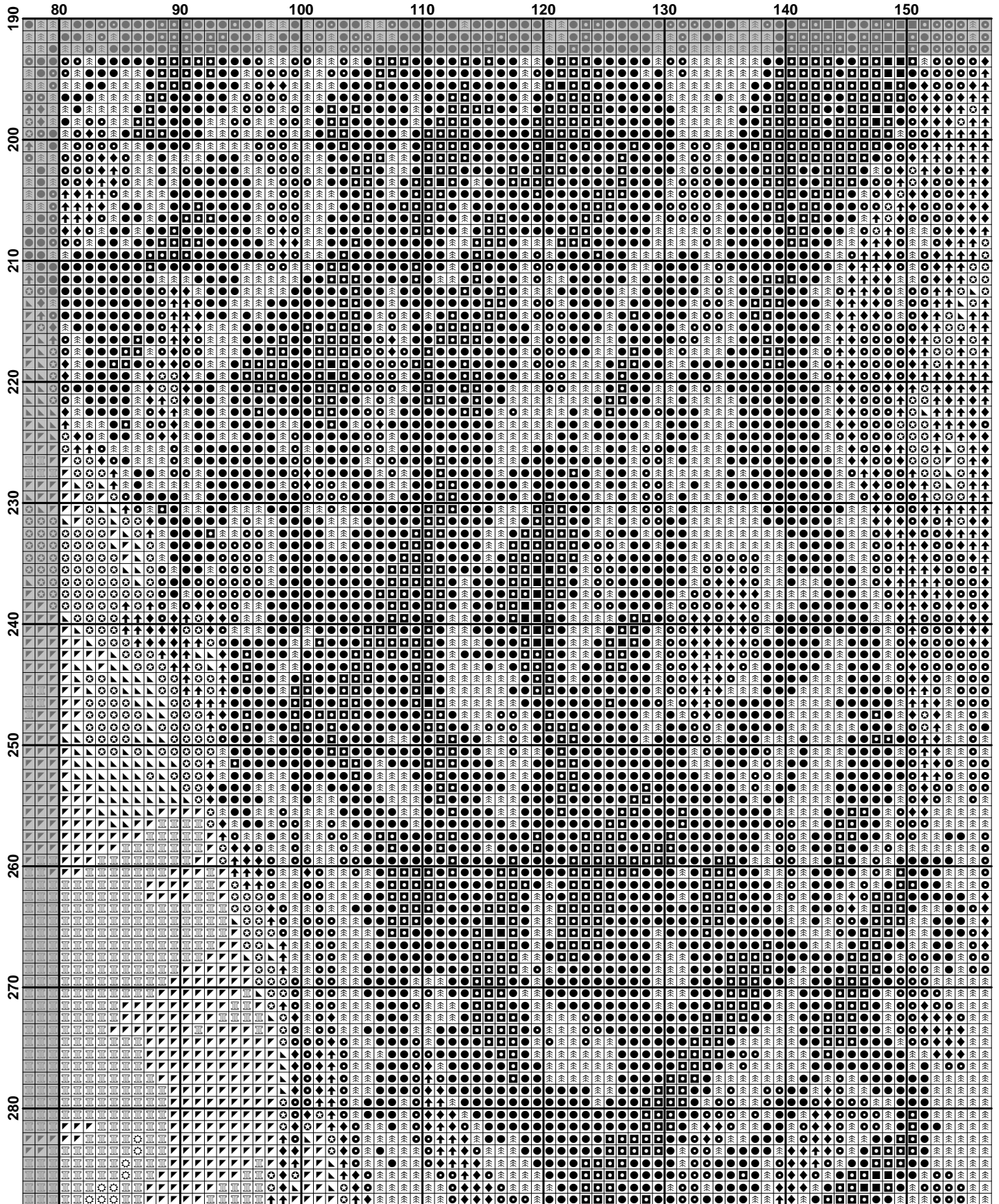


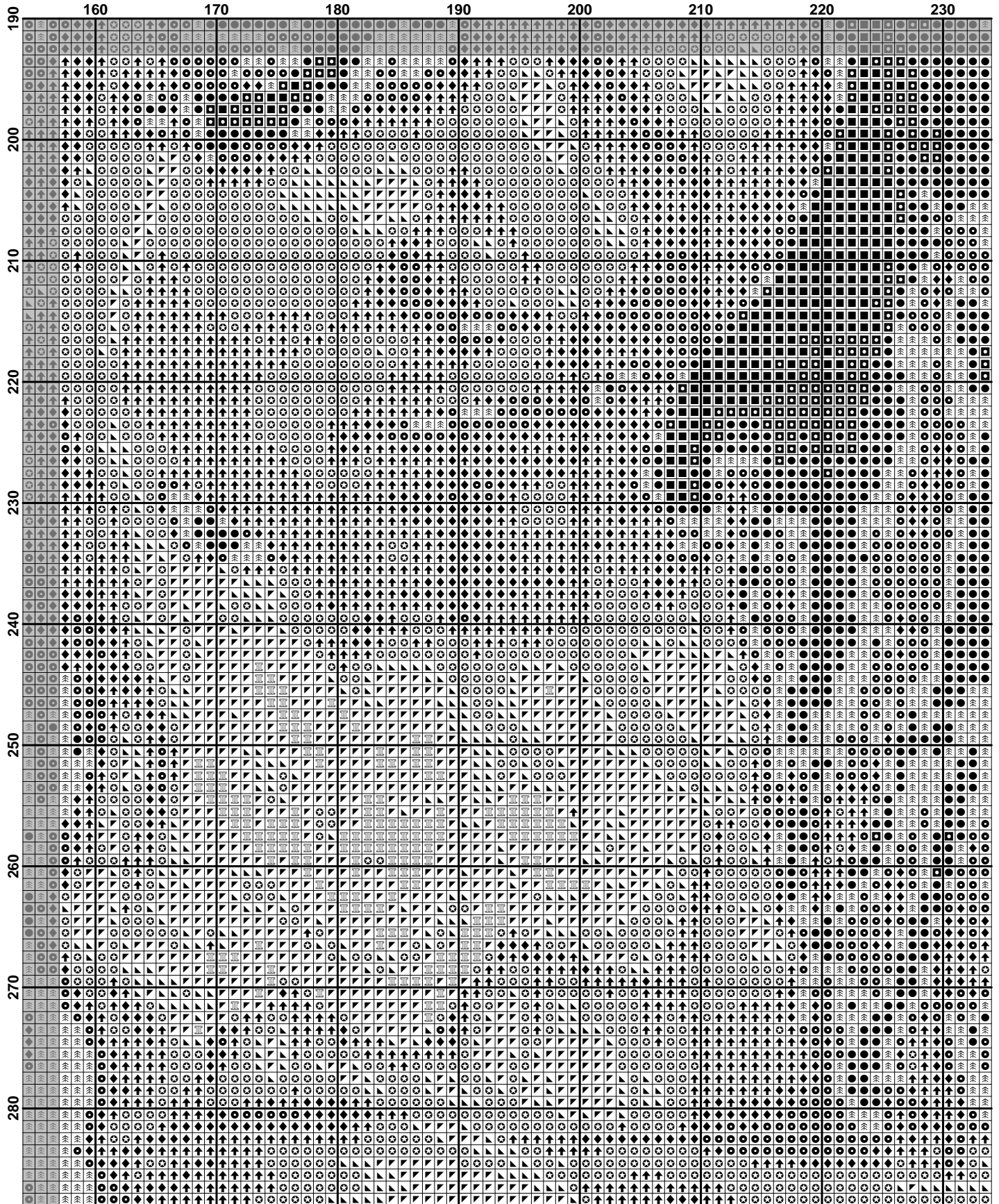


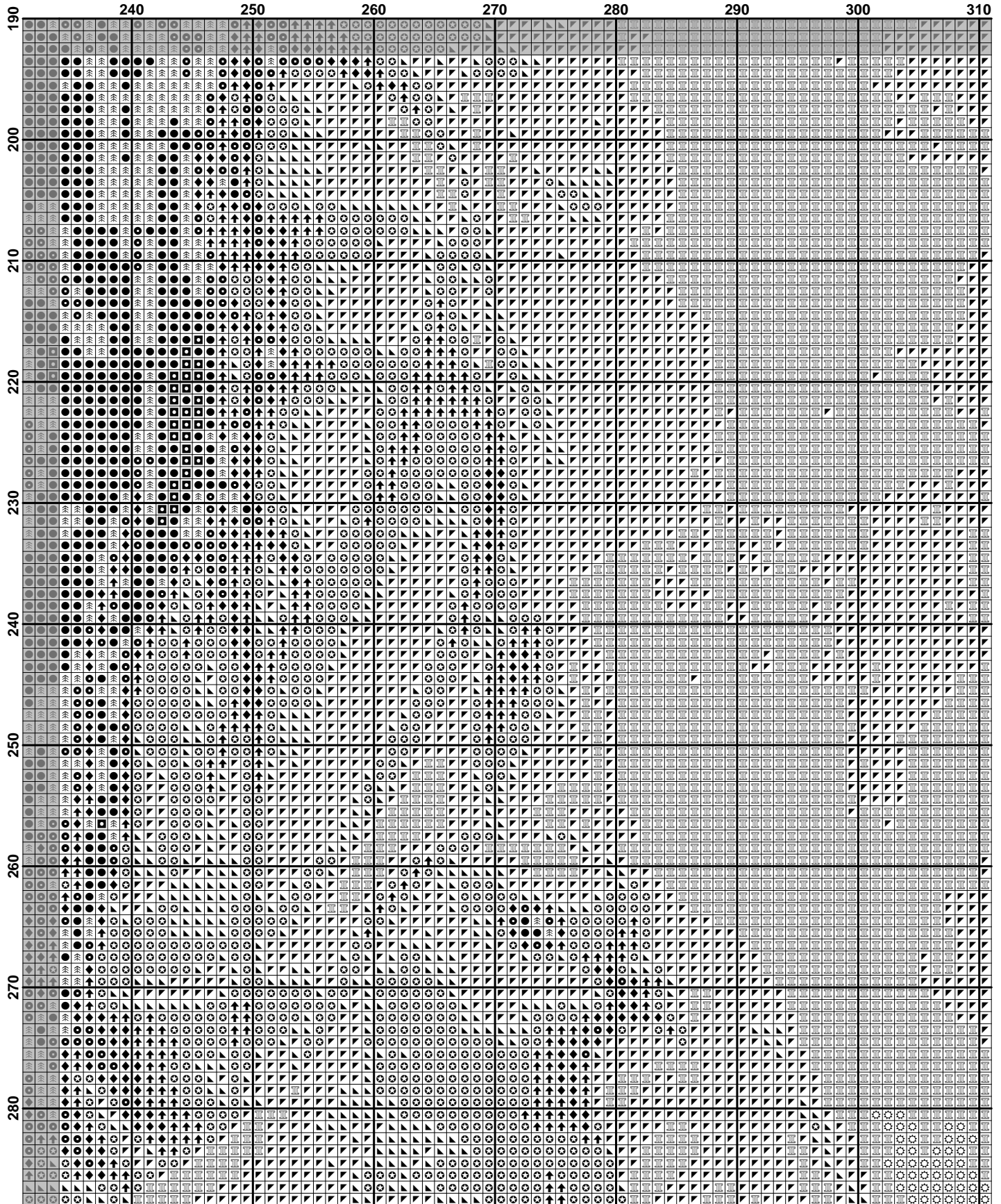


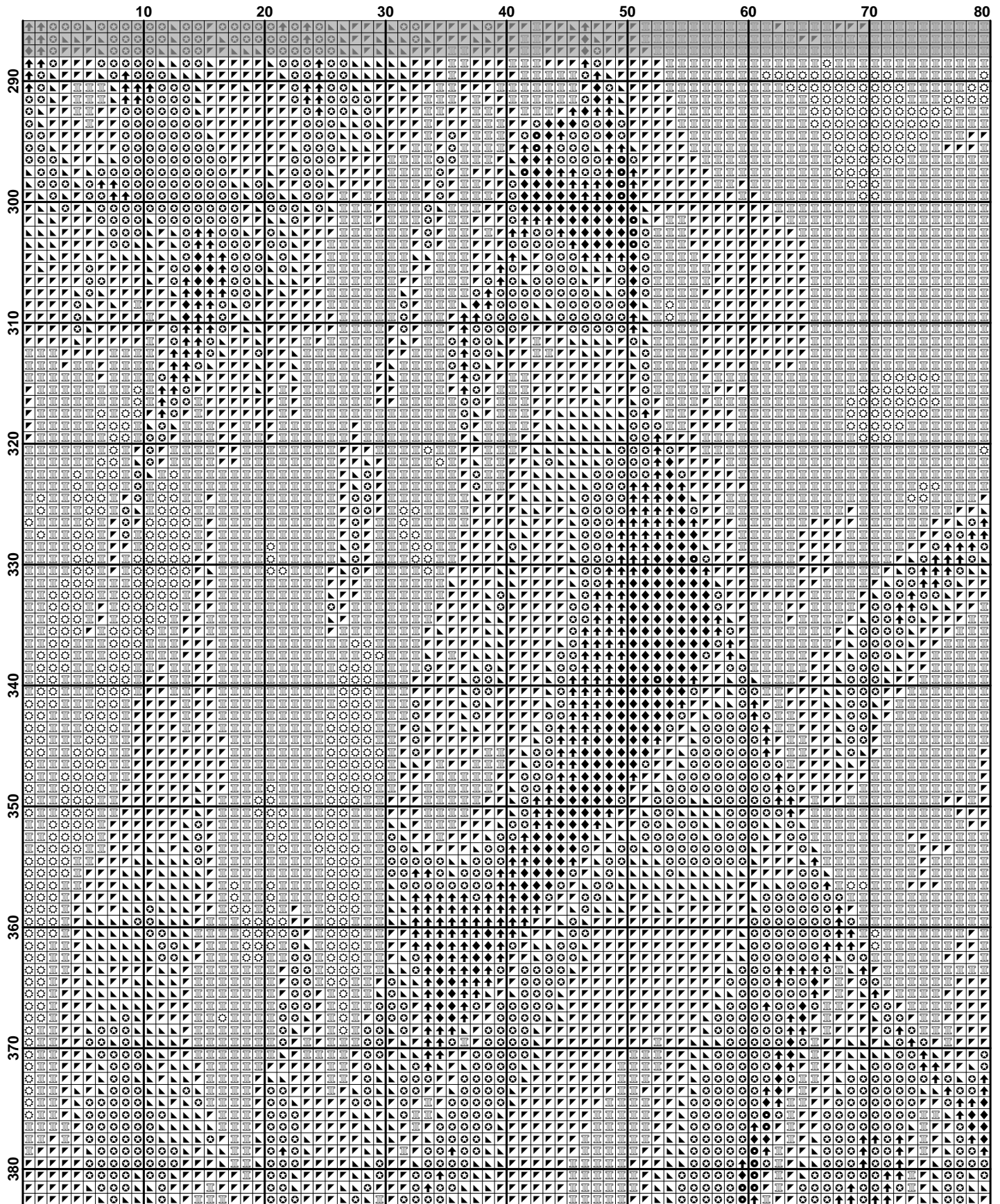
	310	320	330	340	350
100	☐	☐	☐	☐	☐
110	☐	☐	☐	☐	☐
120	☐	☐	☐	☐	☐
130	☐	☐	☐	☐	☐
140	☐	☐	☐	☐	☐
150	☐	☐	☐	☐	☐
160	☐	☐	☐	☐	☐
170	☐	☐	☐	☐	☐
180	☐	☐	☐	☐	☐
190	☐	☐	☐	☐	☐

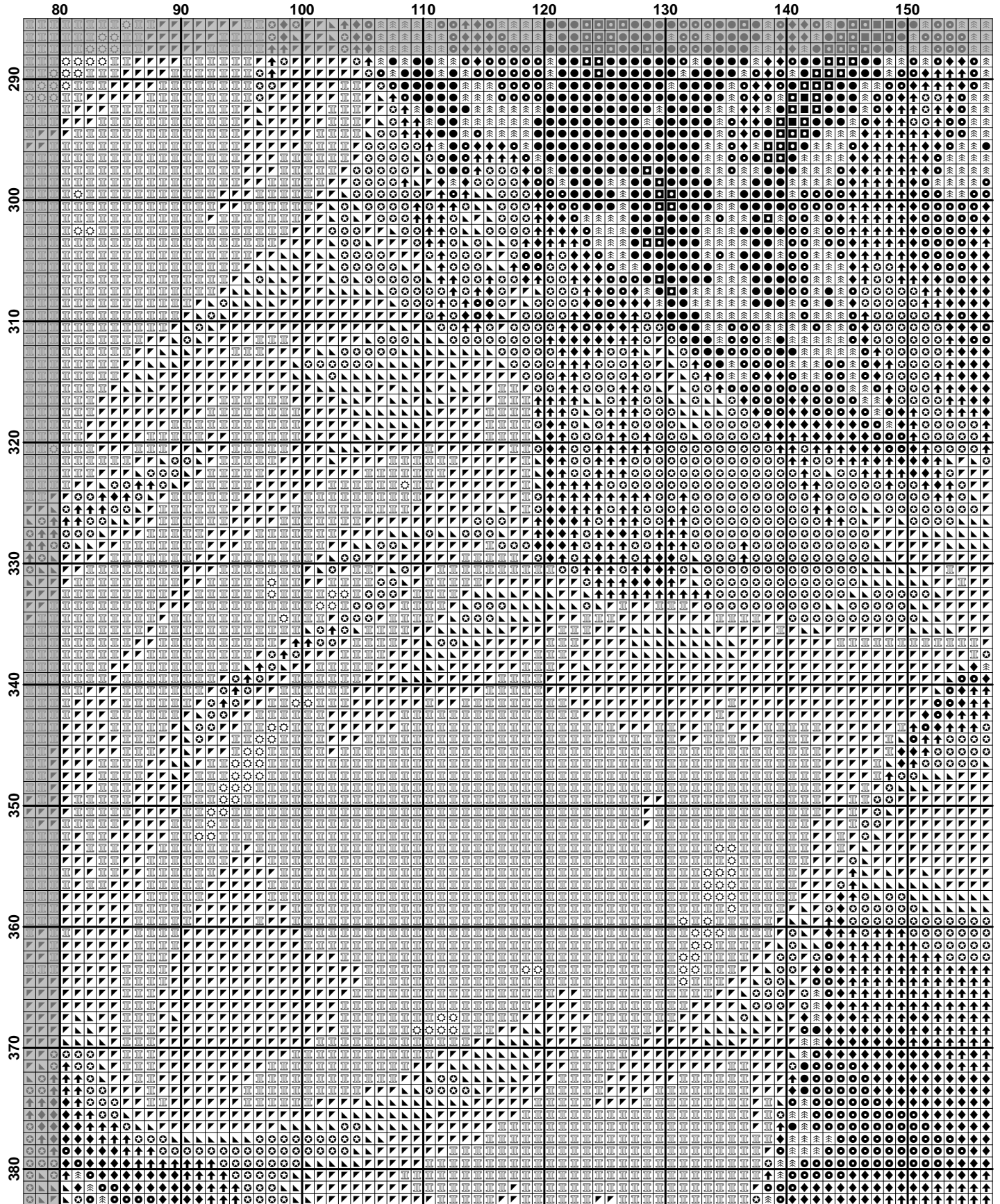
	10	20	30	40	50	60	70	80
190
200
210
220
230
240
250
260
270
280

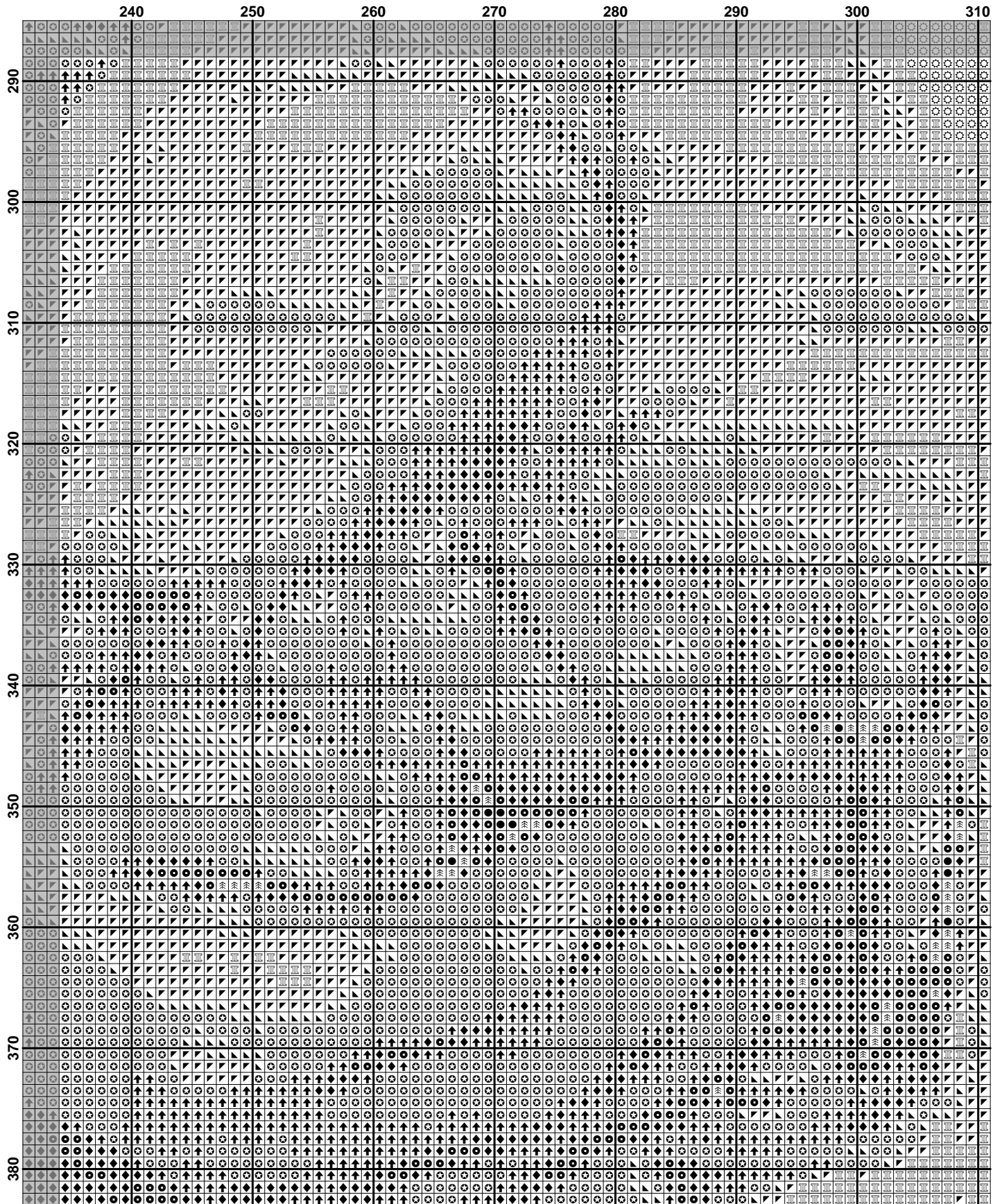


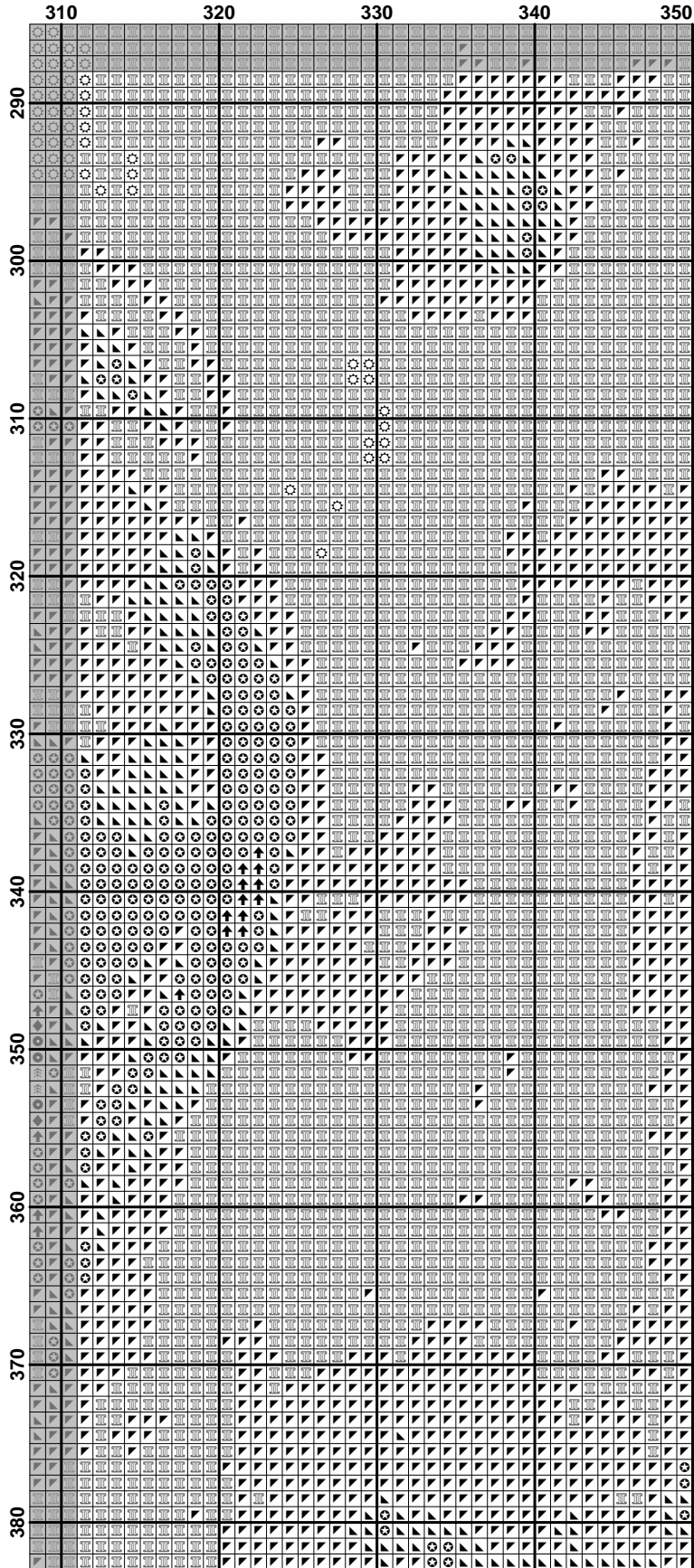












	310	320	330	340	350
380					
390					
400					
410					
420					
430					
440					