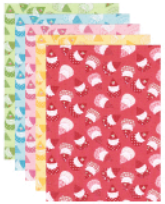


**FABRIC**



**Lecieen Holiday Happy**  
5 Fat Eighths (11"x18"):  
1) 2614-G  
1) 2614-L  
1) 2614-P  
1) 2614-Y  
1) 2614-R



**Lecieen Holiday Happy**  
5 Fat Eighths (11"x18"):  
1) 2615-G  
1) 2615-L  
1) 2615-P  
1) 2615-Y  
1) 2615-R



**Lecieen Holiday Happy**  
5 Fat Eighths (11"x18"):  
1) 2616-G  
1) 2616-L  
1) 2616-P  
1) 2616-Y  
1) 2616-R



**Lecieen Holiday Happy**  
5 Fat Eighths (11"x18"):  
1) 2617-G  
1) 2617-L  
1) 2617-P  
1) 2617-Y  
1) 2617-R



**Lecieen Holiday Happy**  
5 Fat Eighths (11"x18"):  
1) 2618-G  
1) 2618-L  
1) 2618-P  
1) 2618-Y  
1) 2618-R



**Lecieen Holiday Happy**  
Backing & Binding:  
3½ yards 2615-W



**Lecieen 1000's Colors Collection (solids)**  
1¾ yard #550 White  
¼ yard #504 Black



**Batting**  
54" x 62"

**cosmo Floss**  
1 skein COSMO Black #600

**Happy Little Lanterns of Candy Colored Holiday Happiness**  
by Monica Solorio-Snow for Lecien



48" x 56" finished quilt featuring Holiday Happy  
by Monica Solorio-Snow of Happy Zombie for Lecien  
[lecien.co.jp/en/hobby](http://lecien.co.jp/en/hobby) [thehappyzombie.com/holidayhappy](http://thehappyzombie.com/holidayhappy)



See other Holiday Happy sewing & craft projects + add your own photos, at:  
[www.flickr.com/groups/HolidayHappy](http://www.flickr.com/groups/HolidayHappy)





## CUTTING

### PRINTS

From each of the 25 Fat Eighths (11"x18"), cut:

- 1) 7½" x 8½" [H] piece
- 2) 4½" [I] and [J] squares

### WHITE SOLID, cut:

4) 8½" strips

---> subcut into:

- 22) 4½"x 8½" for [A] rectangles
- 3) 7½"x 8½" for [B] rectangles
- 2) 4½"x 8½" for [C] rectangles
- 2) 3½"x 8½" for [D] rectangles

4) 1½" strips

---> subcut into:

- 60) 1½"x 2½" for [E] rectangles

7) 2½" strips

---> subcut into:

- 100) 2½" for [F] squares

### BLACK SOLID, cut:

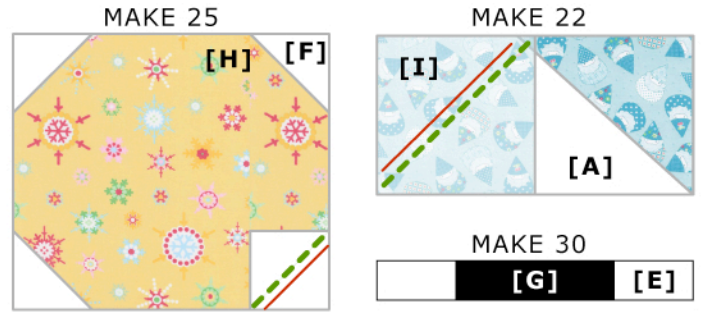
4) 1½" strips

---> subcut into:

- 30) 1½"x 4½" [G] rectangles
- 5) 2" square for circle appliqué

### SNOWFLAKE on WHITE, cut:

6) 2¼" or 2½" strips for binding (set aside remainder for backing)



- 1) stitch & flip - fold/press
- 2) Cut/trim off ends

## ASSEMBLE

- 1) Assemble units as per diagrams above. All seams are ¼" except stitch & flip topstitching.
- 2) Join units into rows (as per diagram below), join rows to finish quilt.
- 3) Appliqué the circle on bottom of lanterns, and embroider the hooks and dangling tassels.

