

good-night

NIGHTIE

This sweet nightgown is easy to construct and effortless to wear. With a Shirred elastic detail at the neckline, shoulder ties, comfortable French seams, and lace detail at the hem, you'll find plenty to keep your sewing interest. *by* CHARISE RANDELL

FABRIC

—Cotton lawn or cotton voile

	45" (115.5 CM)	54" (137 CM)
XS-S	2 yd (1.8 m)	1¾ yd (1.6 m)
M	2⅞ yd (1.9 m)	1¾ yd (1.6 m)
L	2⅞ yd (1.9 m)	1⅞ yd (1.7 m)
XL	2¼ yd (2.1 m)	1⅞ yd (1.7 m)

OTHER SUPPLIES

- ¾" (2 cm) wide cotton lace:
 - XS-S: 1¾ yd (1.6 m)
 - M-XL: 2 yd (1.8 m)
- Matching thread
- Sewing machine needle size 80/11
- Fine pins
- Chalk or fabric marking pen
- Elastic thread
- ¾" (2 cm) bias-tape maker (optional)
- Patterns on pattern insert D

SIZE CHART

	BUST	LENGTH
XS	31-32" (79-81.5 cm)	33" (84 cm)
S	34-35" (86.5-89 cm)	33½" (85 cm)
M	37-38" (94-96.5 cm)	34" (86.5 cm)
L	40-41" (101.5-104 cm)	34½" (87.5 cm)
XL	43-44" (109 cm-112 cm)	35" (89 cm)

Shown in size Small.

RESOURCES

Fabric: Little Lisette by Liesl Gibson for Jo-Ann Fabric and Craft Stores (joann.com)

CUT THE FABRIC

- 1 Cut 1 Front Panel. Cut 1 Back Panel. Cut four 22" × 1½" (56 × 4 cm) bias strips with square ends at one end of each strip and 45-degree angles at the opposite ends. (Refer to the fabric layout diagrams on page 115.) Mark the notches on front and back pattern pieces.

ASSEMBLE NIGHTGOWN

- 2 To make gathers, on Front top edge, fold under ¼" (6 mm) to wrong side. Press. Fold under ¼" (6 mm) again. Press. Topstitch ⅜" (5 mm) from the edge.
 - 3 Mark ½" (1.3 cm) down from the stitching line. Mark 2 more lines, each ¼" (6 mm) down from the previous line, for a total of 3 lines.
 - 4 Wind the elastic thread onto a bobbin by hand, being careful not to stretch the thread.
 - 5 Stitch each line marked, backtacking at the ends. When sewing the second and third rows, pull the fabric taut so the previous rows lie flat. The elastic thread should gather your 3 rows of stitches, which should stretch easily when pulled.
- If they need some help shrinking up, steam the stitches with your iron just hovering above but not touching the rows of stitching. Repeat Steps 2–5 to hem and gather the Back panel.
- 6 To sew the French seams, place the Front and Back panels together with the wrong sides together, right side facing you, matching notches and side seam edges. Stitch with a scant ¼" (6 mm) seam allowance (about ⅜" [5 mm]). Press the seams. Turn the front and back wrong side out, right sides together, and sew the side seams with a ¼" (6mm) seam allowance.
 - 7 Place 2 bias strips right sides together at right angles, matching the angled ends with extensions for a ¼" (6 mm) seam allowance to each side and then stitch the strips together with a diagonal seam (**figure 1**). Repeat to join the remaining pair of strips.
 - 8 Run each bias strip through your ¾" (2 cm) bias-tape maker, following the manufacturer's instructions. Make 4 strips of bias tape from the bias-cut strips of fabric. Fold the tape in half lengthwise and press. (If you do not have a bias-tape maker, see Sewing Basics, page 124.)



9 Open one of the folded bias tapes and place the right side of the bias tape to the inside (wrong side) of the nightgown at the underarm, matching raw edges and placing the seam in the tape at the underarm side seam. Pin in place. Stitch the bias to the underarm edge with a $\frac{3}{8}$ " (1 cm) seam allowance between front and back bust hems (**figure 2**).

10 Trim the angled loose ends of the bias tapes square, then press under $\frac{1}{4}$ " (6 mm) to the wrong side. Refold the bias tapes to encase the underarm seam allowances in the binding. Pin. Edgestitch the bias binding, starting at one end and going around the armhole to the opposite end of the strap, making sure you are stitching on the right side, and catching the other edge of the binding on the wrong side of the nightgown. At the nightgown underarm, be sure the binding covers the previous stitching.

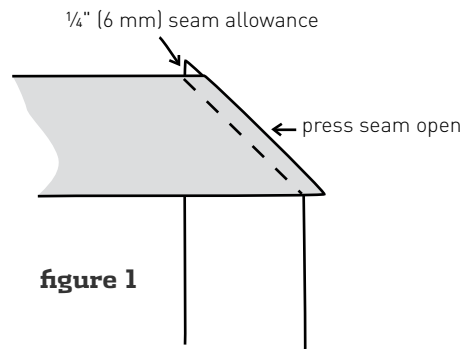


figure 1

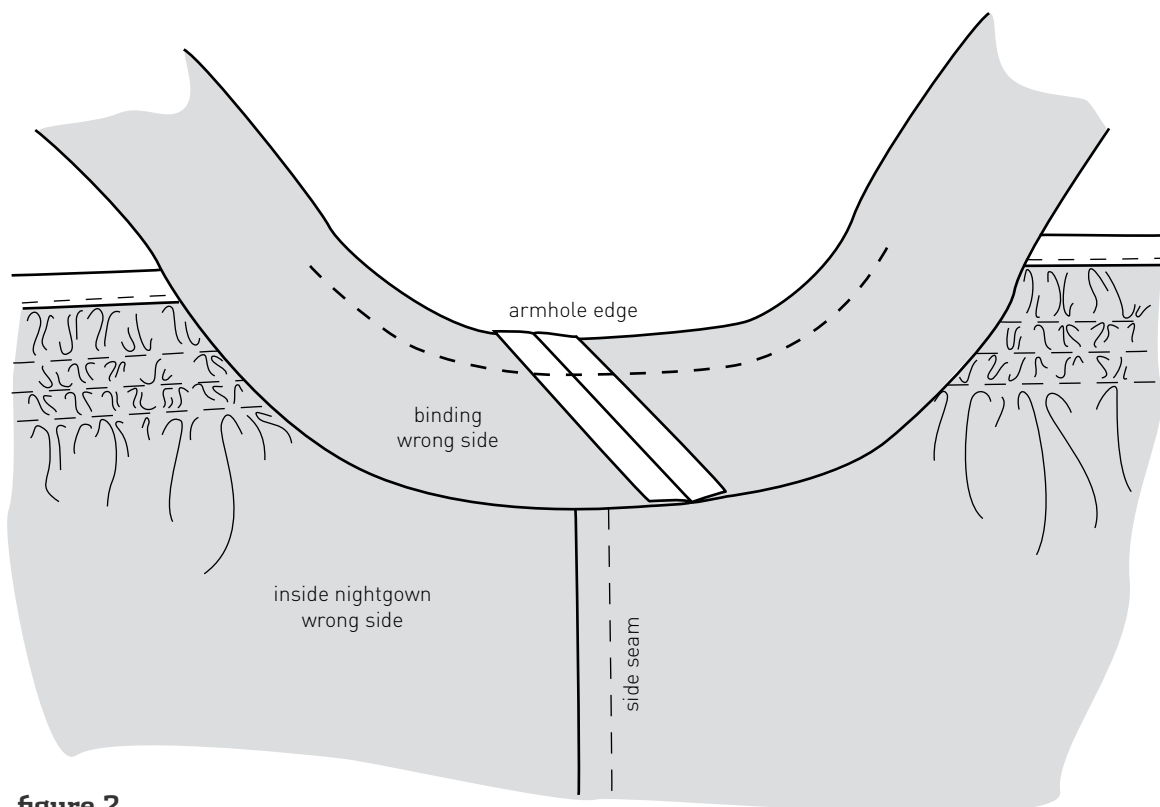


figure 2

11 To attach the lace to the hem, finish the bottom edge with a zigzag or an overlock stitch. Measure the bottom hem circumference and cut a piece of lace at that length + 1" (2.5 cm) for seam allowance. Place the ends of the lace right sides together and stitch with a $\frac{1}{2}$ " (1.3 cm) seam allowance. Fold under $\frac{1}{4}$ " (6 mm) on each raw edge. Edgestitch the folded-under seam allowances (**figure 3**).

12 Mark a line $\frac{3}{8}$ " (1 cm) above the bottom edge of the nightgown. Place the lace right side up on the right side of the gown with the lace top edge along the marked line. Place the lace seam at a side seam of the garment. Edgestitch the lace to the hem (**figure 4**).

Fold the nightgown hem edge up toward the wrong side and press. Topstitch the hem in place $\frac{1}{4}$ " (6 mm) from the edgestitching.

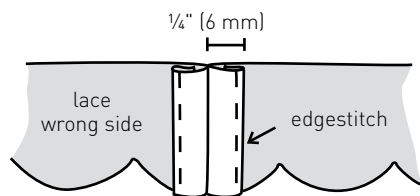


figure 3

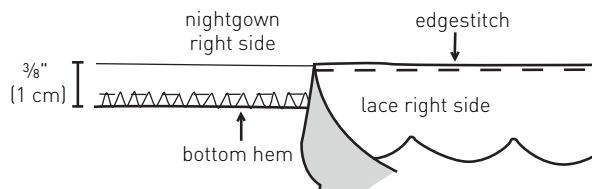
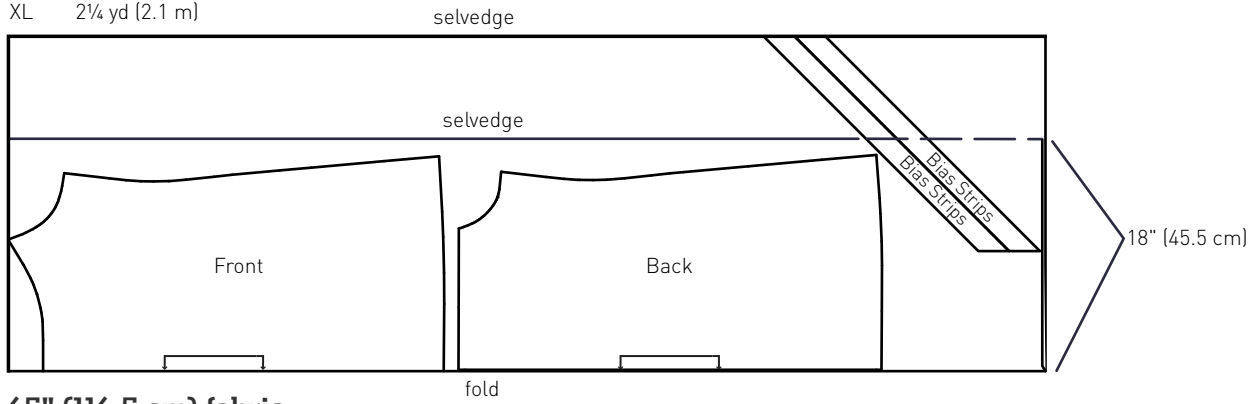


figure 4

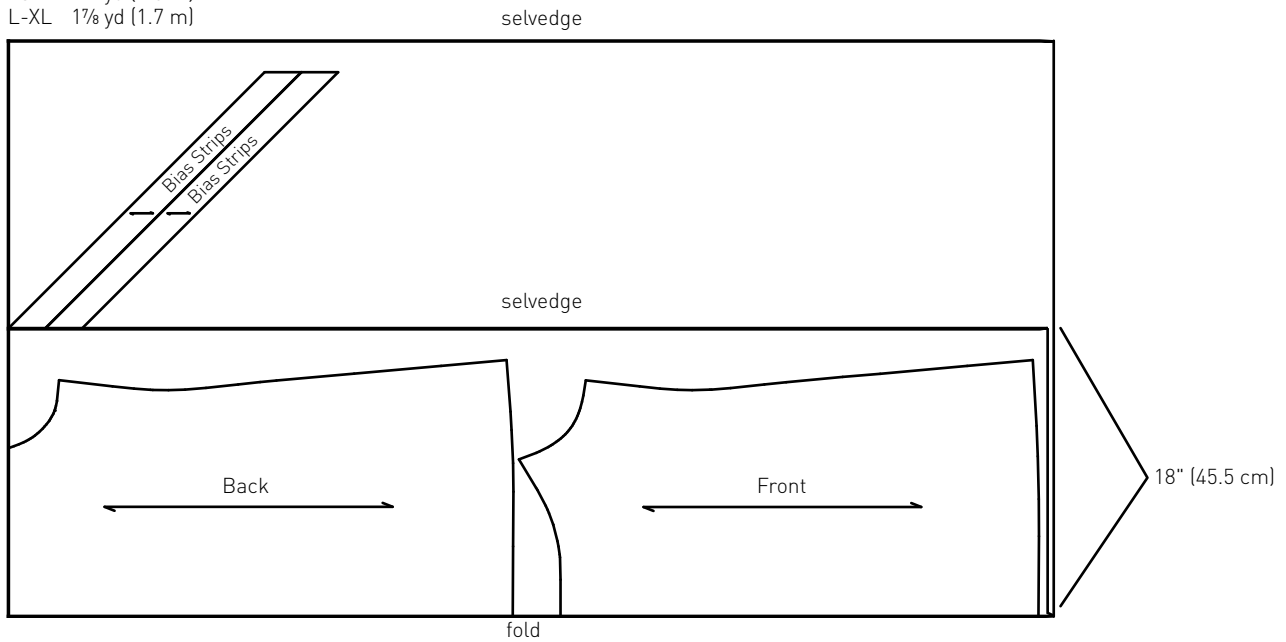


XS-S 2 yd (1.8 m)
 M-L 2 1/8 yd (1.9 m)
 XL 2 1/4 yd (2.1 m)



45" (114.5 cm) fabric

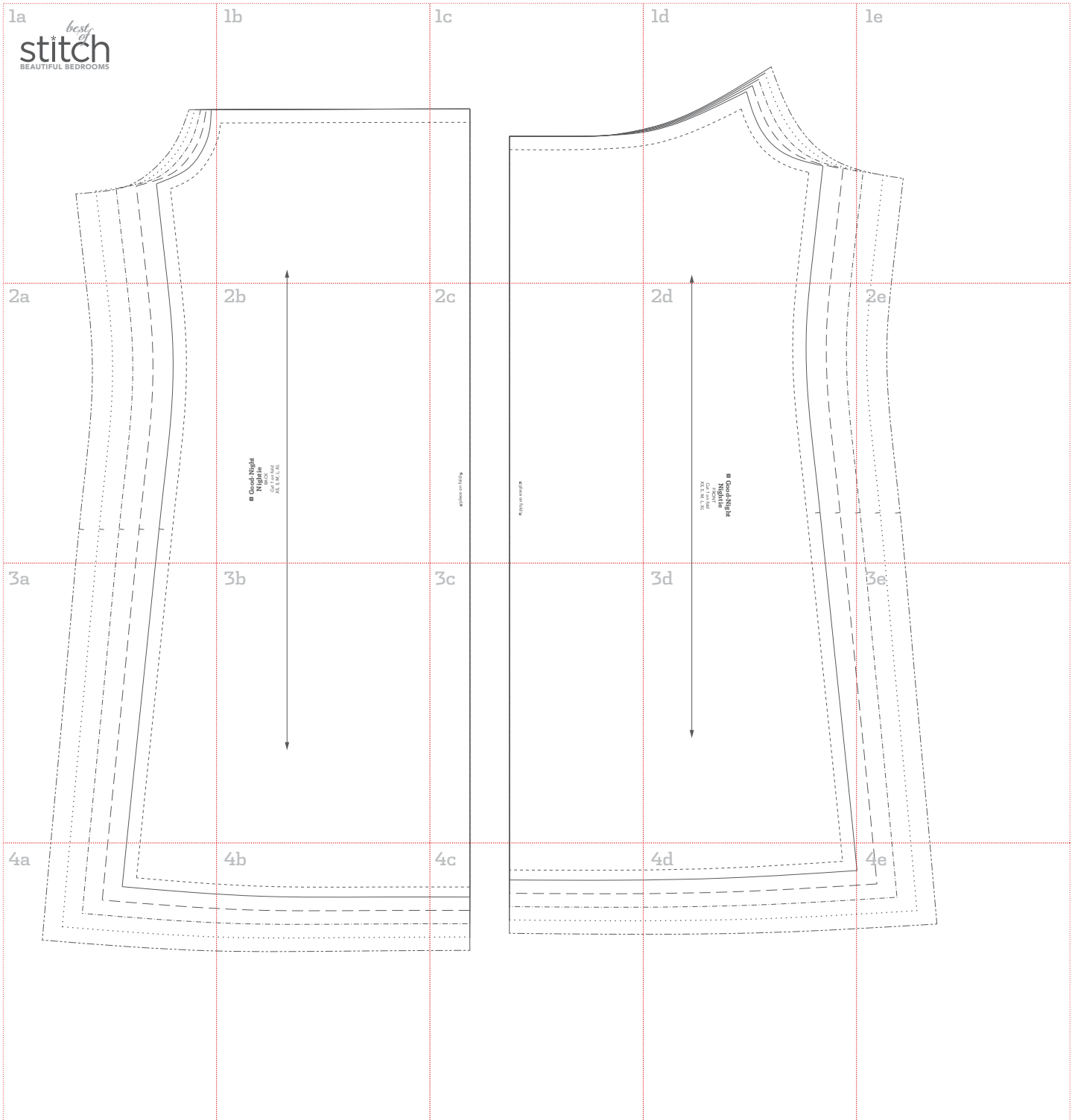
XS-M 1 3/4 yd (1.6 m)
 L-XL 1 7/8 yd (1.7 m)



54" (137 cm) fabric

good-night *nightie*

PATTERN GUIDE



1a

*best
of*
stitch*
BEAUTIFUL BEDROOMS

SEAM ALLOWANCE - - - - -

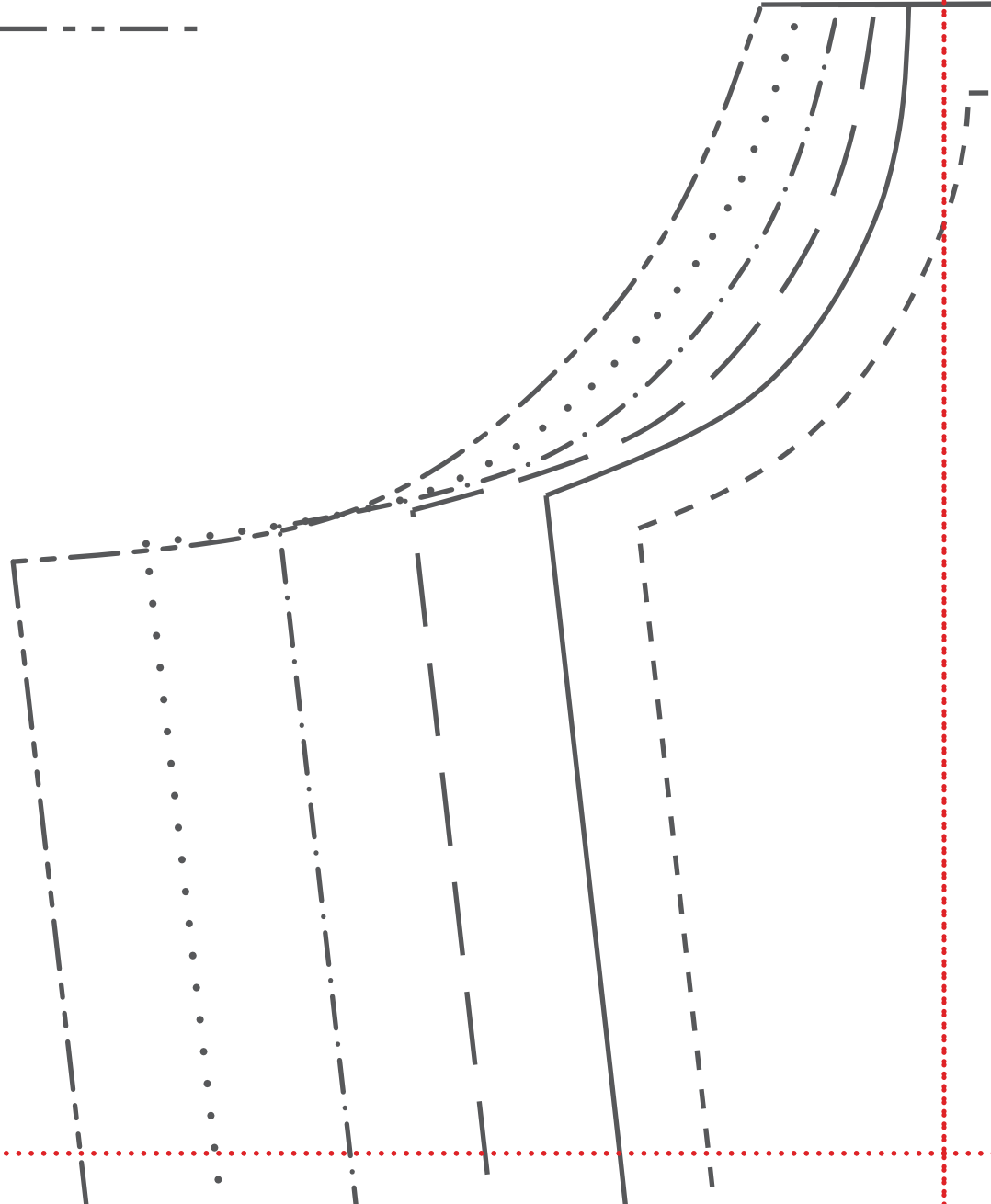
XS _____

S — — — — —

M ······

L ······

XL - - - - -

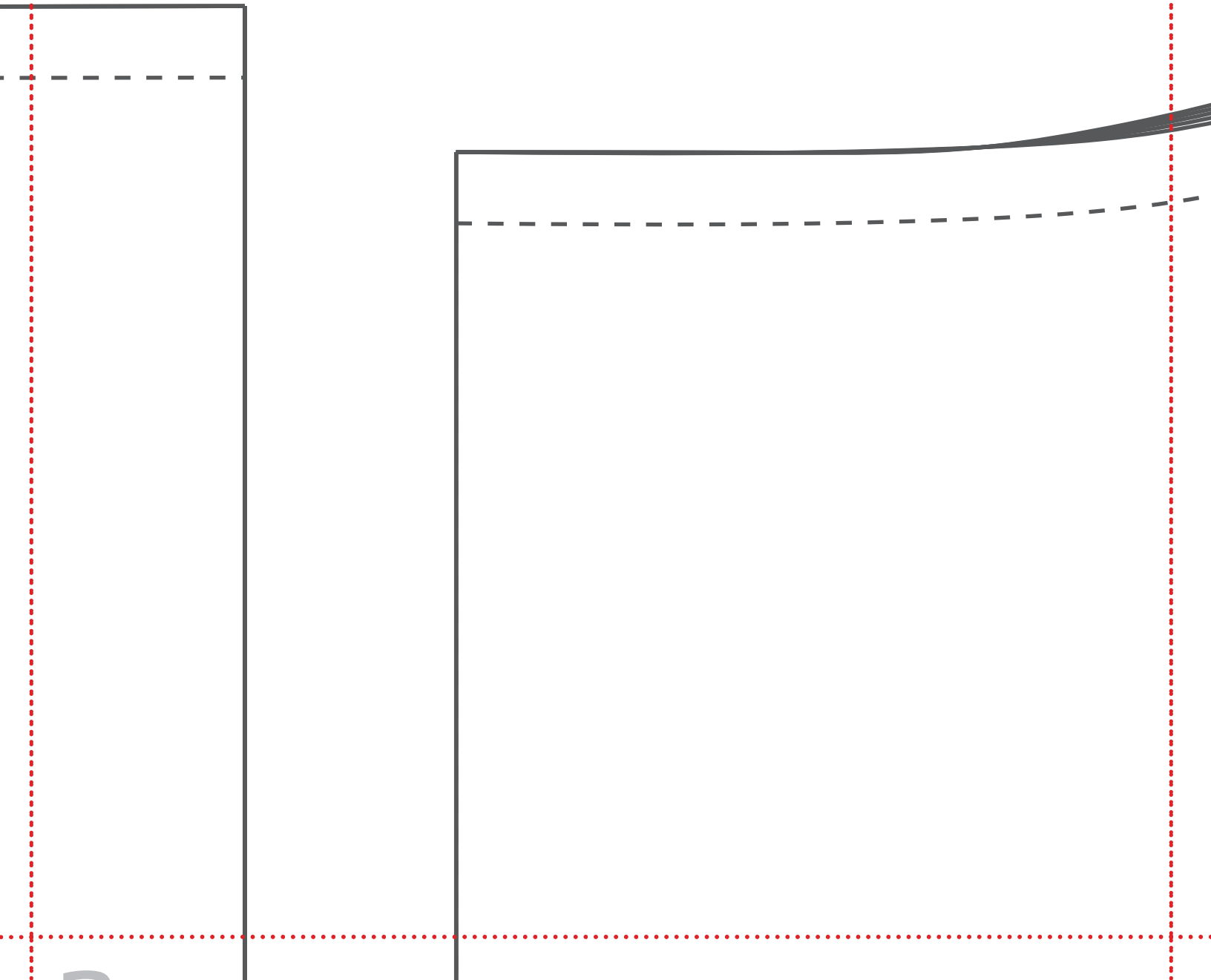


1b

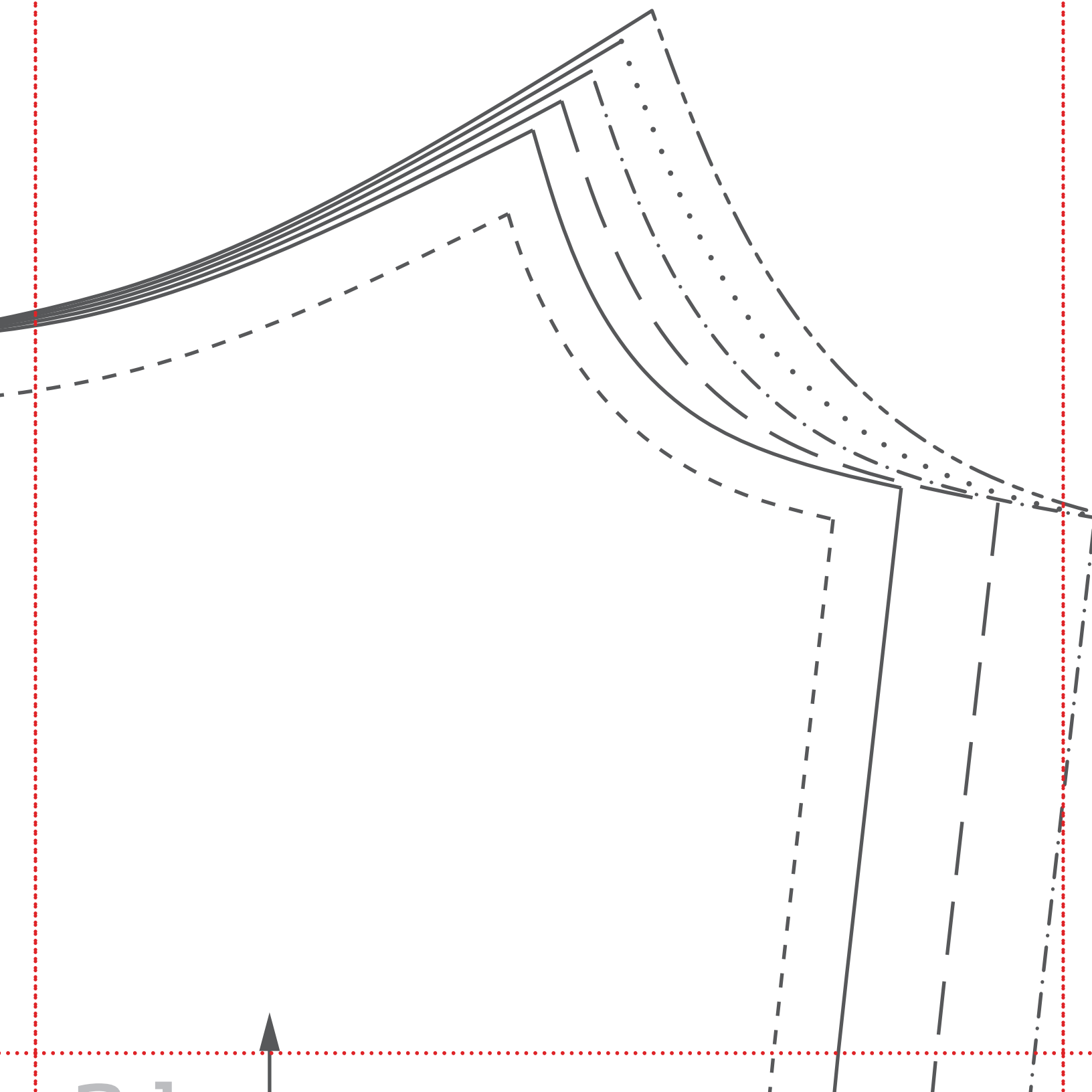


21

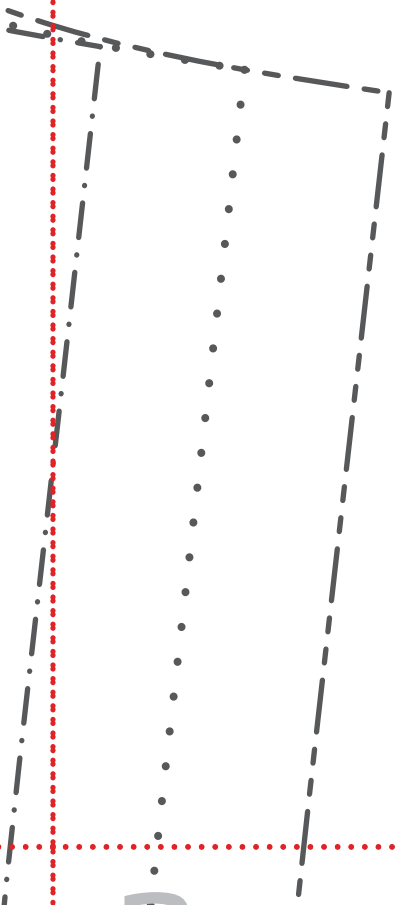
1c



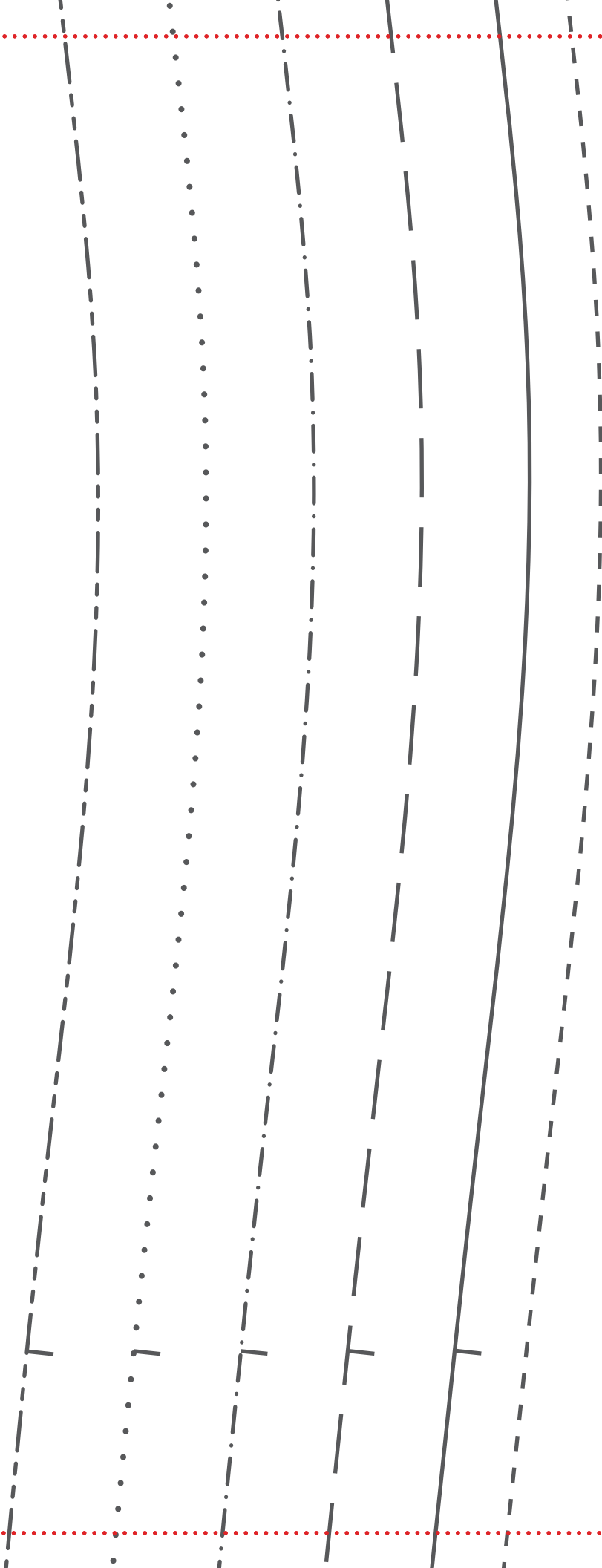
1d



le



2a



2b

**9 Good-Night
Nightie**

BACK

Cut 1 on fold
XS, S, M, L, XL

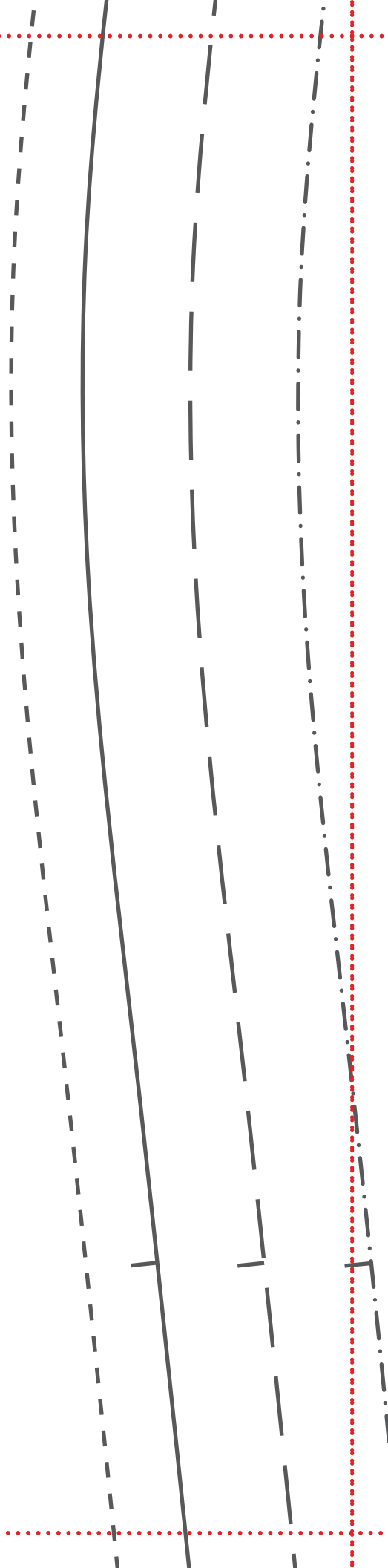
2c

↙ place on fold ↘

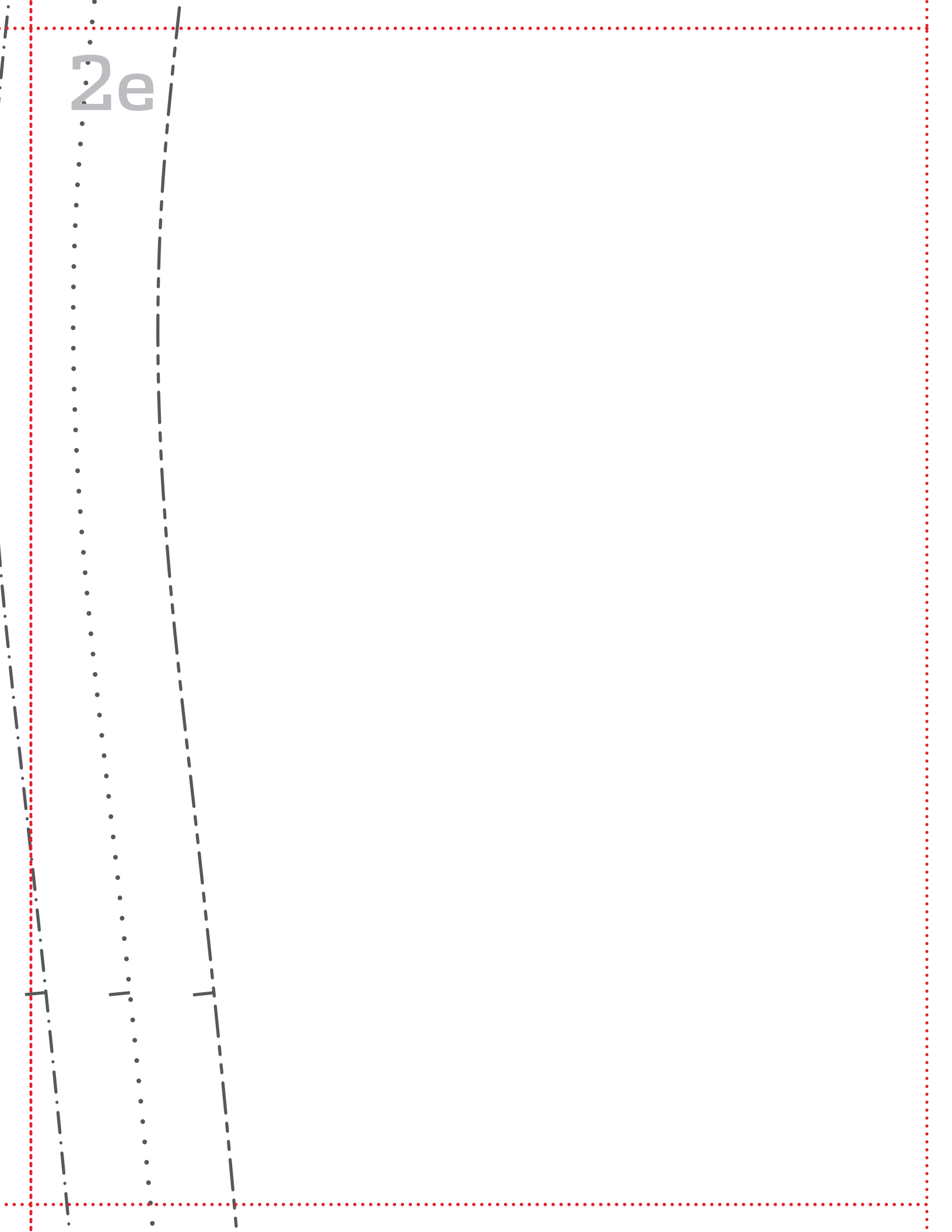
↙ place on fold ↘

2d

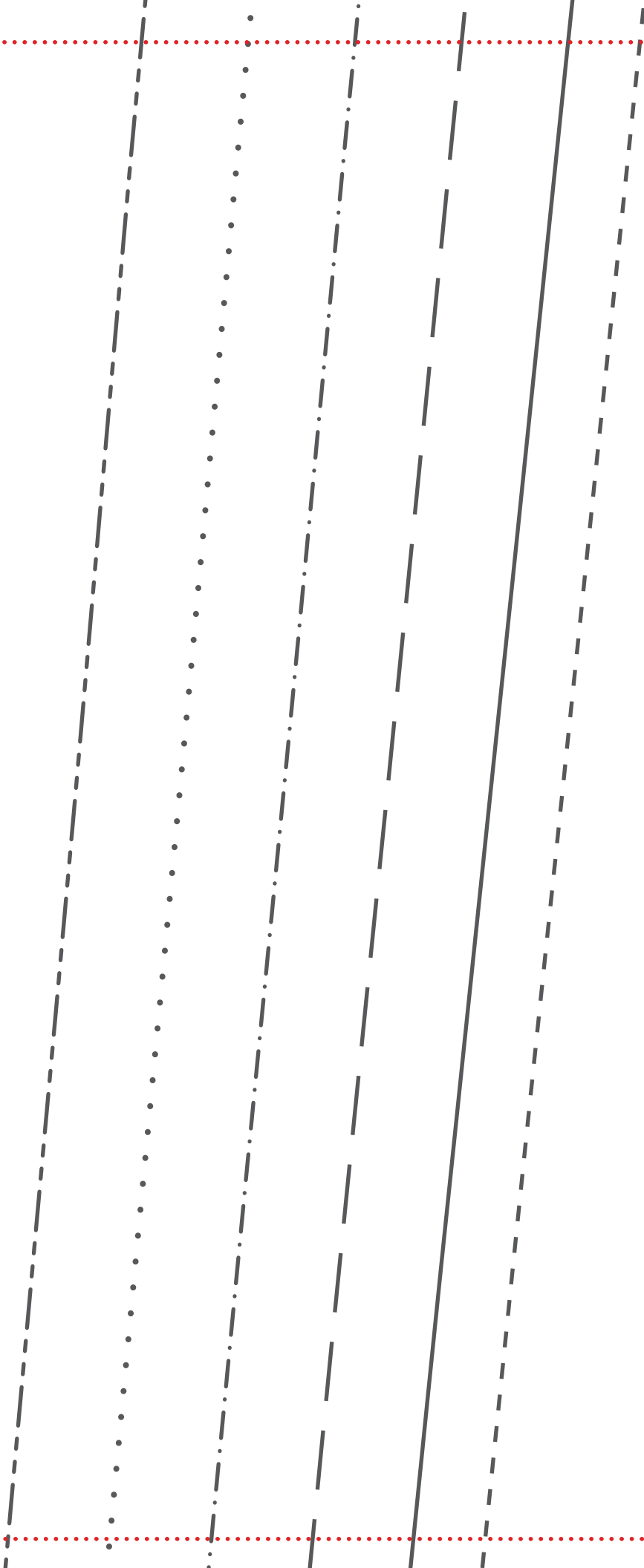
9 **Good-Night
Nightie**
FRONT
Cut 1 on fold
XS, S, M, L, XL



2e



3a

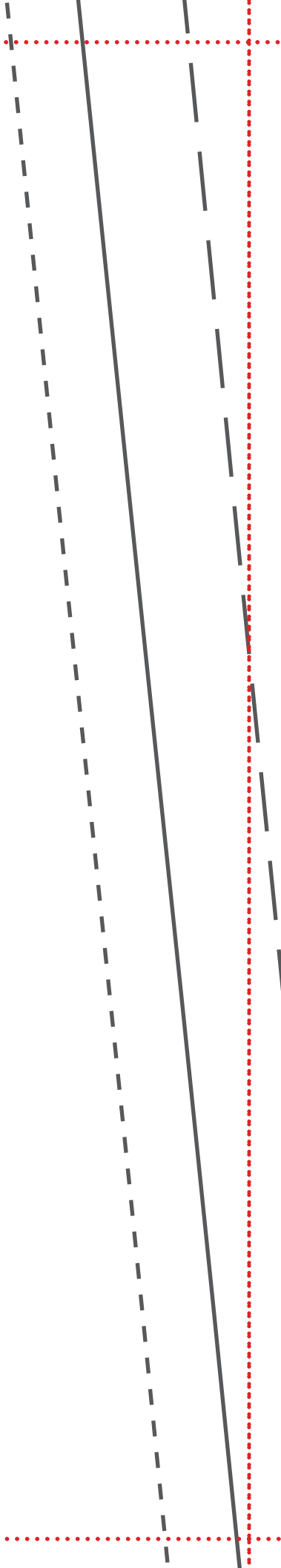


3b



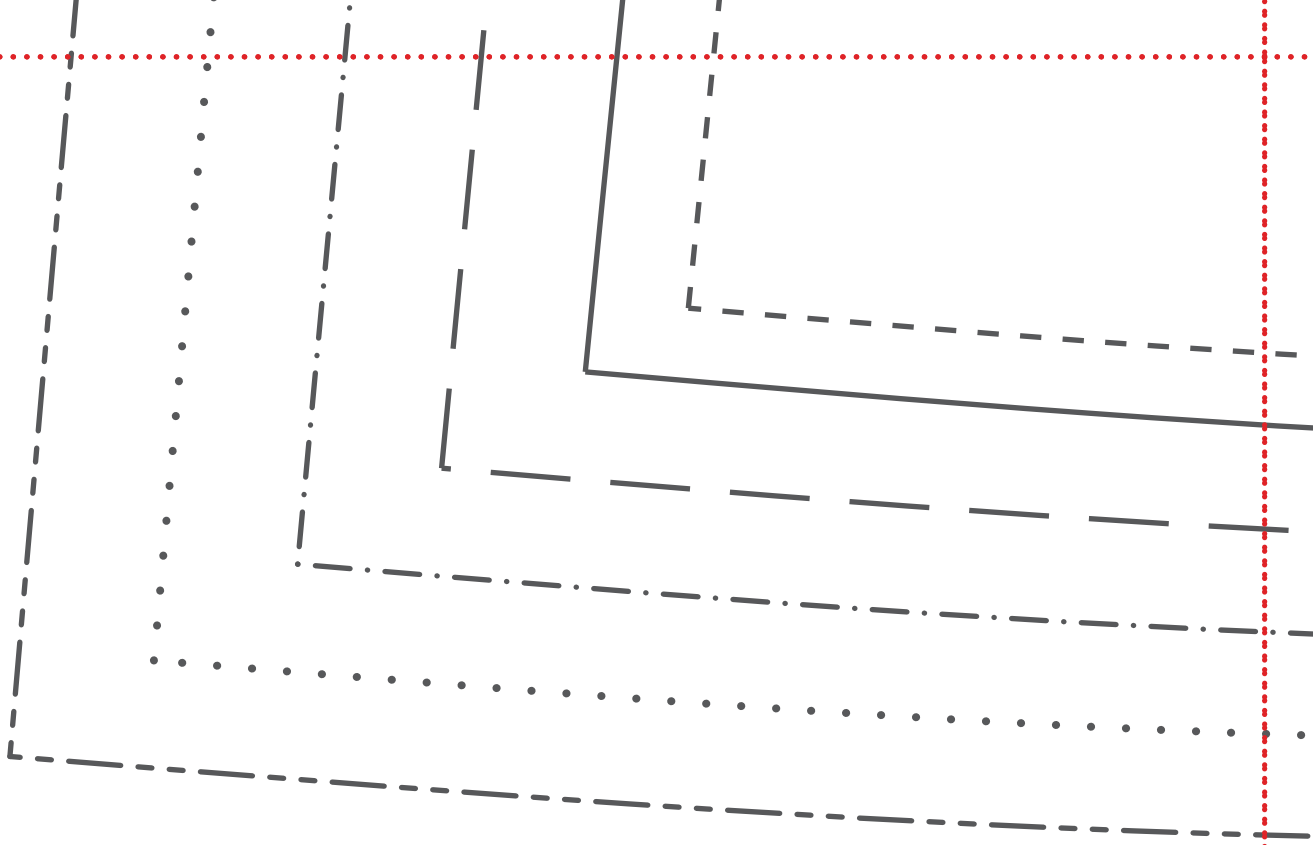
3c

3d

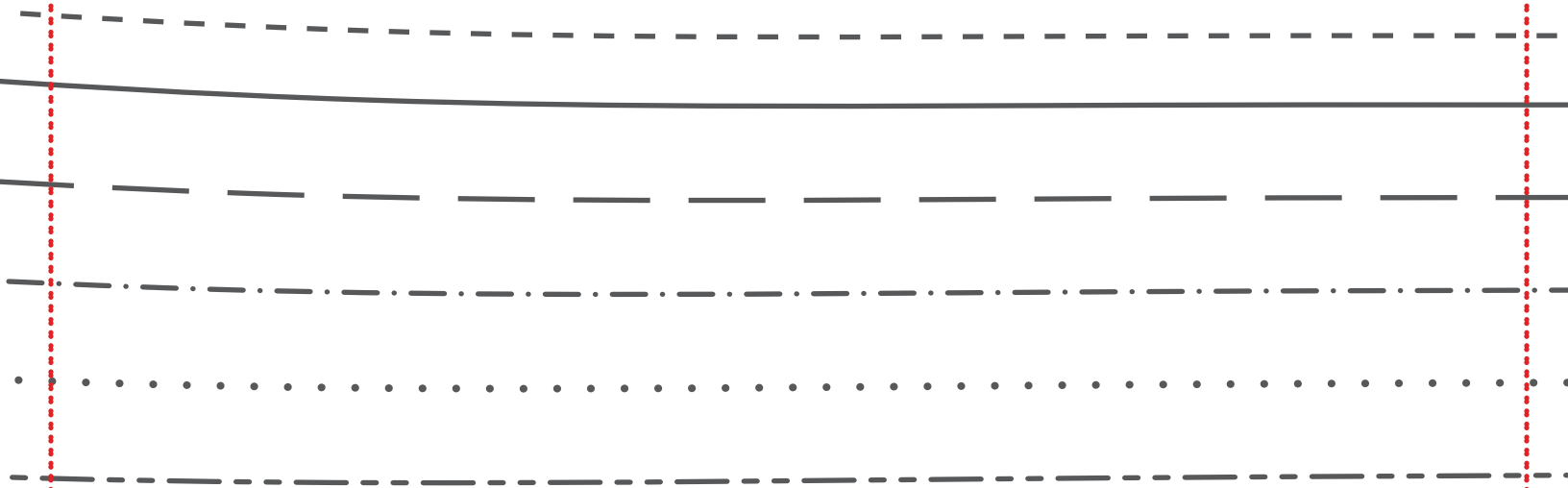


3e

4a



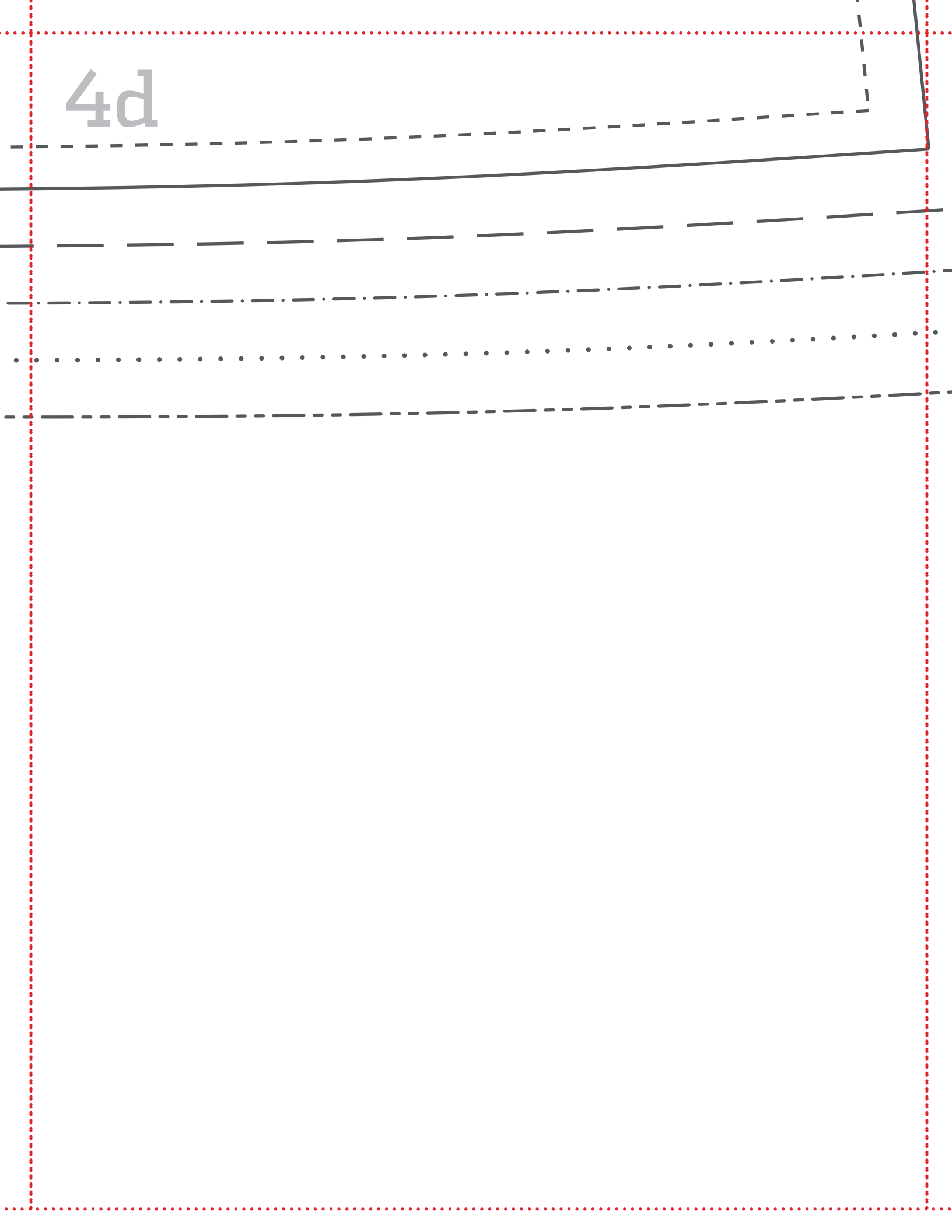
4b



4c

The image shows a handwriting practice sheet. It features a red dotted border around the entire page. In the top-left corner, the text "4c" is written in a light gray font. Below this, there are two sets of horizontal lines for writing practice. Each set consists of a solid top line, a dashed middle line, and a solid bottom line. The first set is located in the upper-left quadrant, and the second set is located in the upper-right quadrant. The rest of the page is blank.

4d



4e