

# Heaven and Earth Designs

## Moth Queen

(Large Format)

Chart No: HAERA 021

By Michele Sayetta

Artwork by Rachel Anderson



Finished Design Size 400 W by 872 H (16 W X 34-7/8 inches on 25ct)

Heaven and Earth Designs

425 9th Street SW

Willmar MN 56201

320-214-7998

[www.heavenandearthdesigns.com](http://www.heavenandearthdesigns.com)

Copyright Heaven and Earth Designs 2006

Copyright Rachel Anderson 2006

## Instructions

The model for Moth Queen is stitched over 1 on 25 count Dublin Linen. Please use 1 strand of floss or 2 depending on your coverage preference.

It is recommended that you make working copies and enlarge to view detail and symbols.

You may also use the tent stitch or full crosses depending on your preference.

This is a large project that will offer many hours of stitching pleasure.

We thank you for purchasing this design and welcome any questions or comments that you may have.

Heaven and Earth Designs  
Copyright Rachel Anderson 2005

**Pattern Name:** The Moth Queen-Anderson

**Designed By:** Michele Sayetta

**Company:** Heaven and Earth Designs















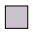













**Copyright:** 2006

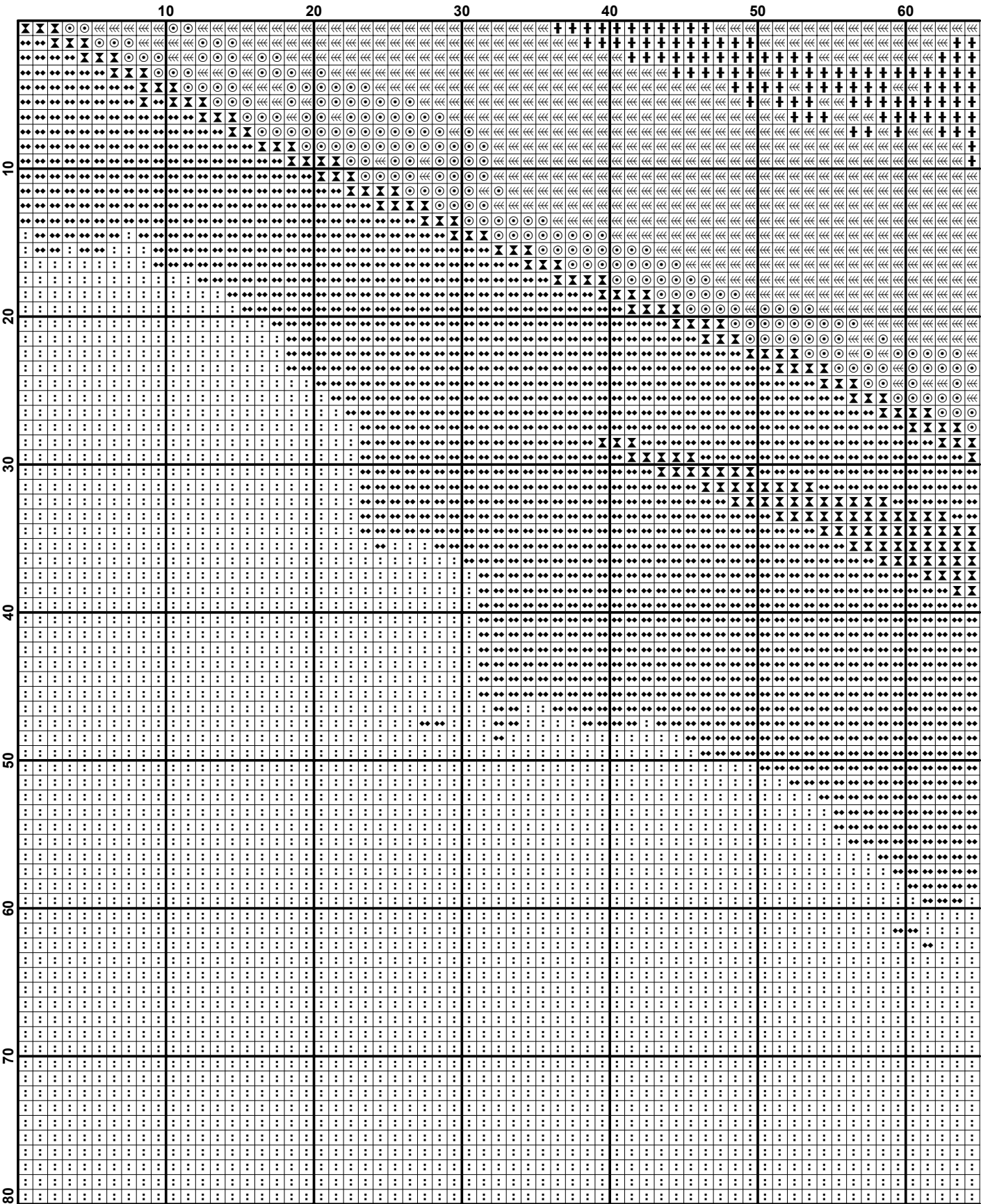
**Fabric:** Linen or Evenweave 25, White  
400w X 872h Stitches

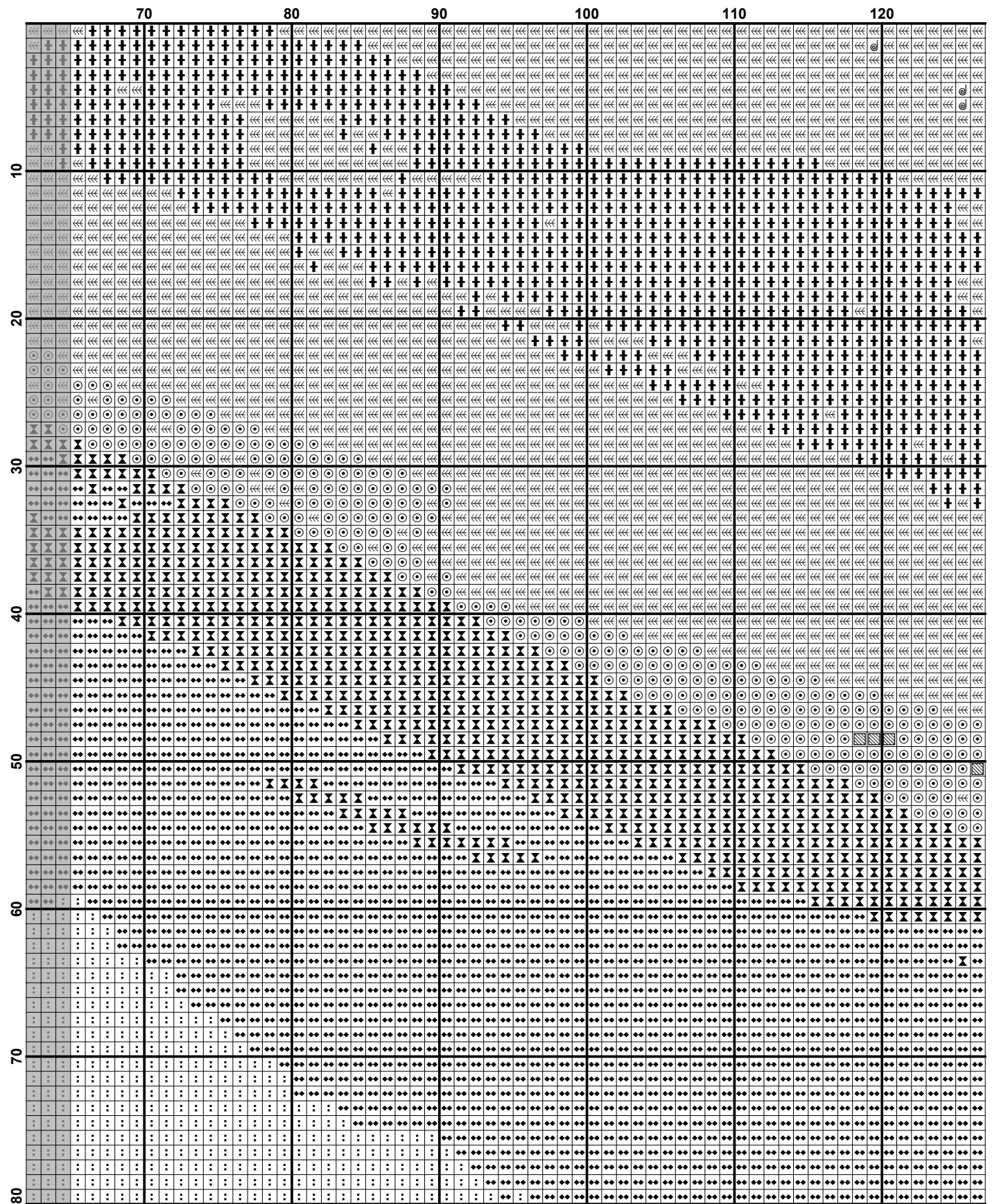
**Size:** 25 Count, 16w X 34-7/8h in

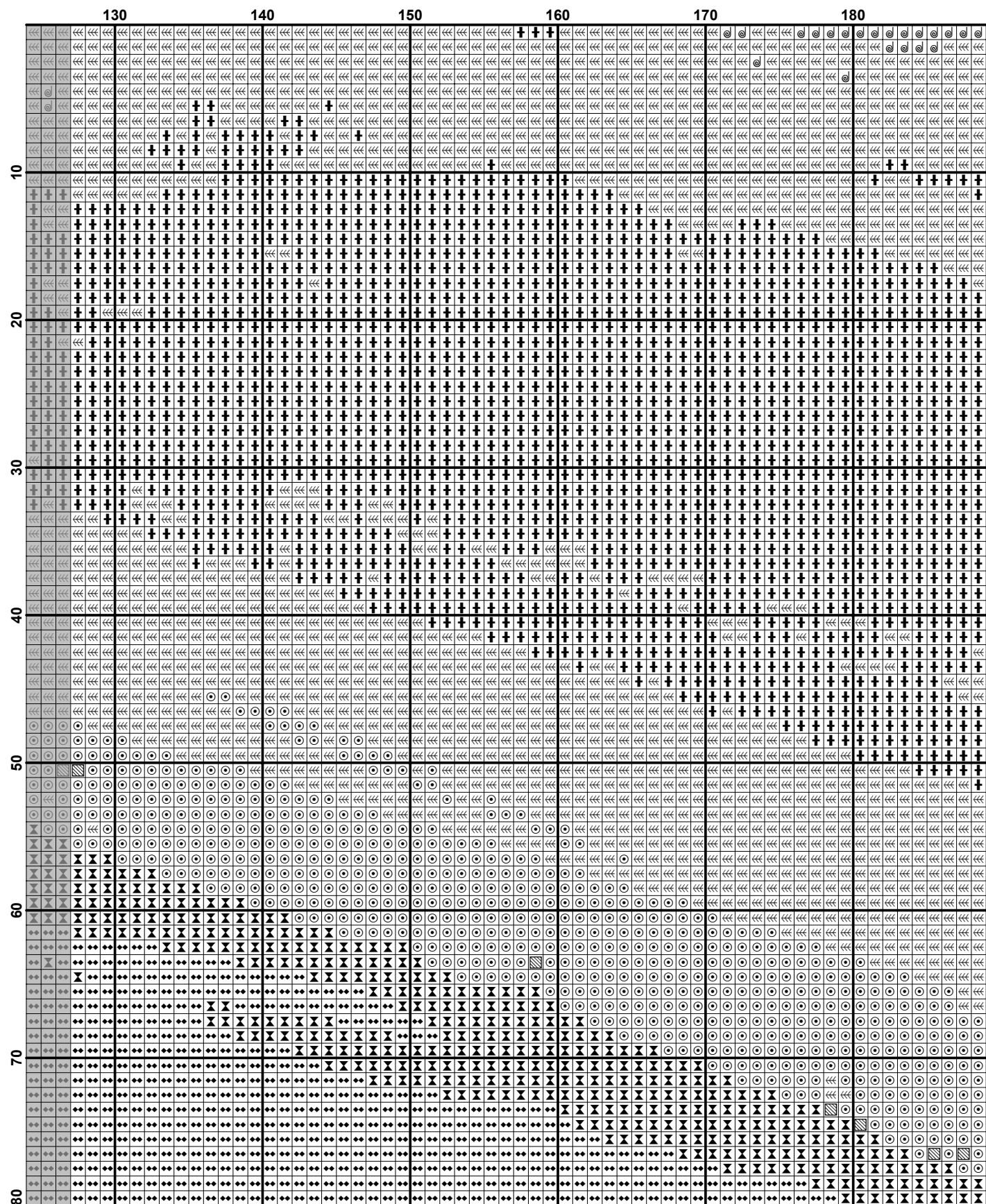
### Floss Used for Full Stitches:

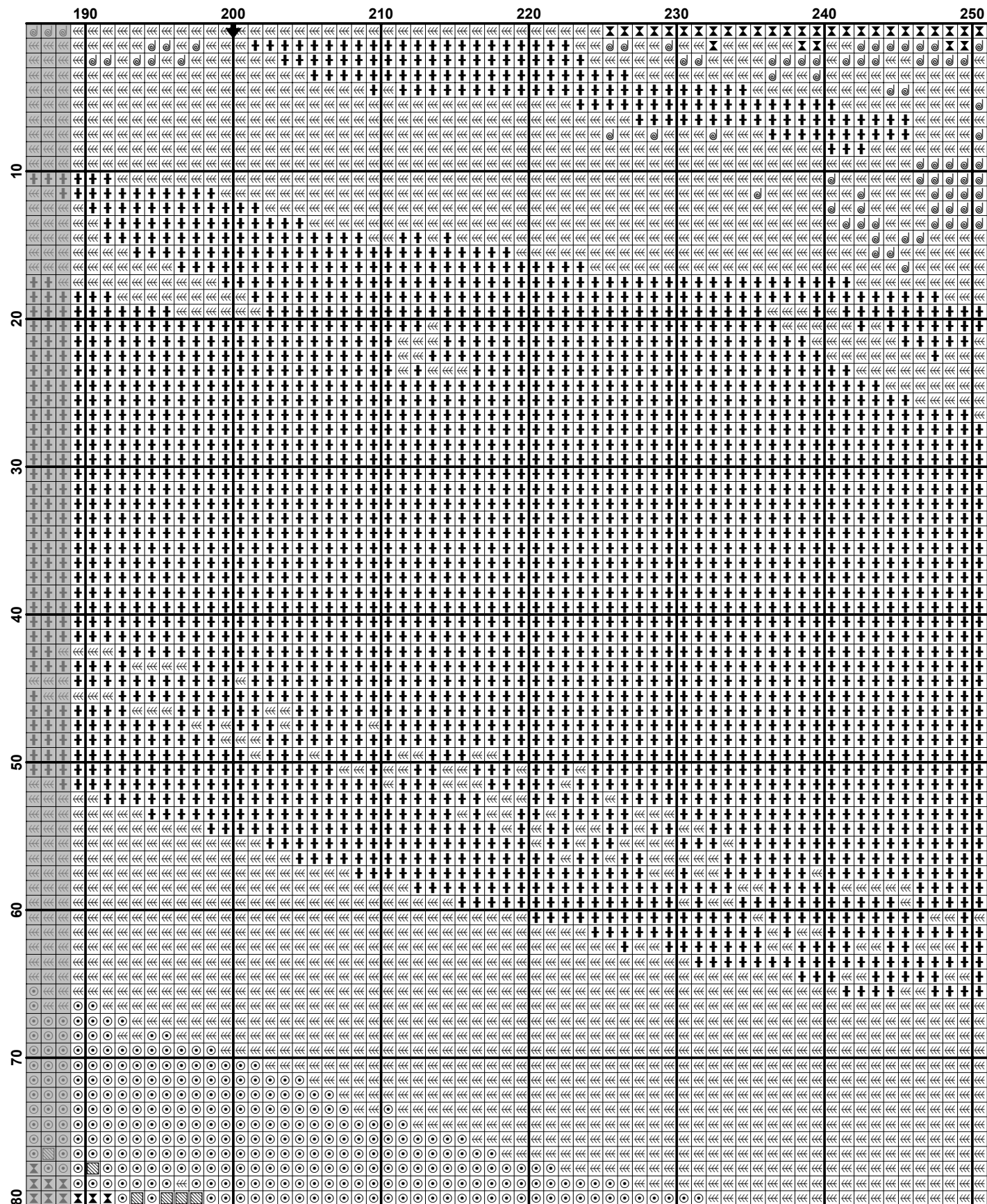
Symbol	Strands	Type	Number	Color
	➔	2	DMC 032	Kreinik #4
	⌂	2	DMC 153	Violet-VY LT
	■	2	DMC 154	Grape-VY DK
	∨	2	DMC 163	Celadon Green-MD
	(	2	DMC 169	Pewter-LT
	⊙	2	DMC 211	Lavender-LT
	..	2	DMC 310	Black
	=	2	DMC 315	Antique Mauve-VY DK
	-	2	DMC 316	Antique Mauve-MD
	%	2	DMC 318	Steel Gray-LT
	//	2	DMC 319	Pistachio Green-VY DK
	⊕	2	DMC 413	Pewter Gray-DK
	⊗	2	DMC 414	Steel Gray-DK
	<	2	DMC 451	Shell Gray-DK
	⋈	2	DMC 452	Shell Gray-MD
	:	2	DMC 453	Shell Gray-LT
	\$	2	DMC 500	Blue Green-VY DK
	↓	2	DMC 501	Blue Green-DK
	T	2	DMC 561	Jade-VY DK
	≪	2	DMC 762	Pearl Gray-VY LT
	■	2	DMC 777	Raspberry-VY DK
	∞	2	DMC 778	Antique Mauve-VY LT
	H	2	DMC 779	Cocoa-DK
	)	2	DMC 814	Garnet-DK
		2	DMC 815	Garnet-MD
	♥	2	DMC 817	Coral Red-VY DK
	@	2	DMC 818	Baby Pink
	†	2	DMC 819	Baby Pink-LT
	◇	2	DMC 839	Beige Brown-DK
	7	2	DMC 842	Beige Brown-VY LT
	◇	2	DMC 890	Pistachio Green-UL DK
	0	2	DMC 902	Garnet-VY DK

Symbol	Strands	Type	Number	Color
	+	2	DMC 915	Plum-DK
	✚	2	DMC 924	Gray Green-VY DK
	5	2	DMC 939	Navy Blue-VY DK
	✦	2	DMC 963	Dusty Rose-UL VY LT
	9	2	DMC 3033	Mocha Brown-VY LT
	#	2	DMC 3041	Antique Violet-MD
	1	2	DMC 3042	Antique Violet-LT
		2	DMC 3072	Beaver Gray-VY LT
	✕	2	DMC 3685	Mauve-DK
	≡	2	DMC 3721	Shell Pink-DK
	•	2	DMC 3726	Antique Mauve-DK
	↑	2	DMC 3727	Antique Mauve-LT
	L	2	DMC 3740	Antique Violet-DK
	♦♦	2	DMC 3743	Antique Violet-VY LT
	●	2	DMC 3756	Baby Blue-UL VY LT
	>	2	DMC 3768	Gray Green-DK
	8	2	DMC 3790	Beige Gray-UL DK
	/	2	DMC 3802	Antique Mauve-VY DK
	*	2	DMC 3803	Mauve-MD
	⌘	2	DMC 3815	Celadon Green-DK
	▣	2	DMC 3818	Emerald Green-UL VY DK
	4	2	DMC 3834	Grape-DK
	3	2	DMC 3835	Grape-MD
	2	2	DMC 3836	Grape-LT
	6	2	DMC 3857	Rosewood-DK
	√	2	DMC 3860	Cocoa
	↑	2	DMC 3865	Winter White





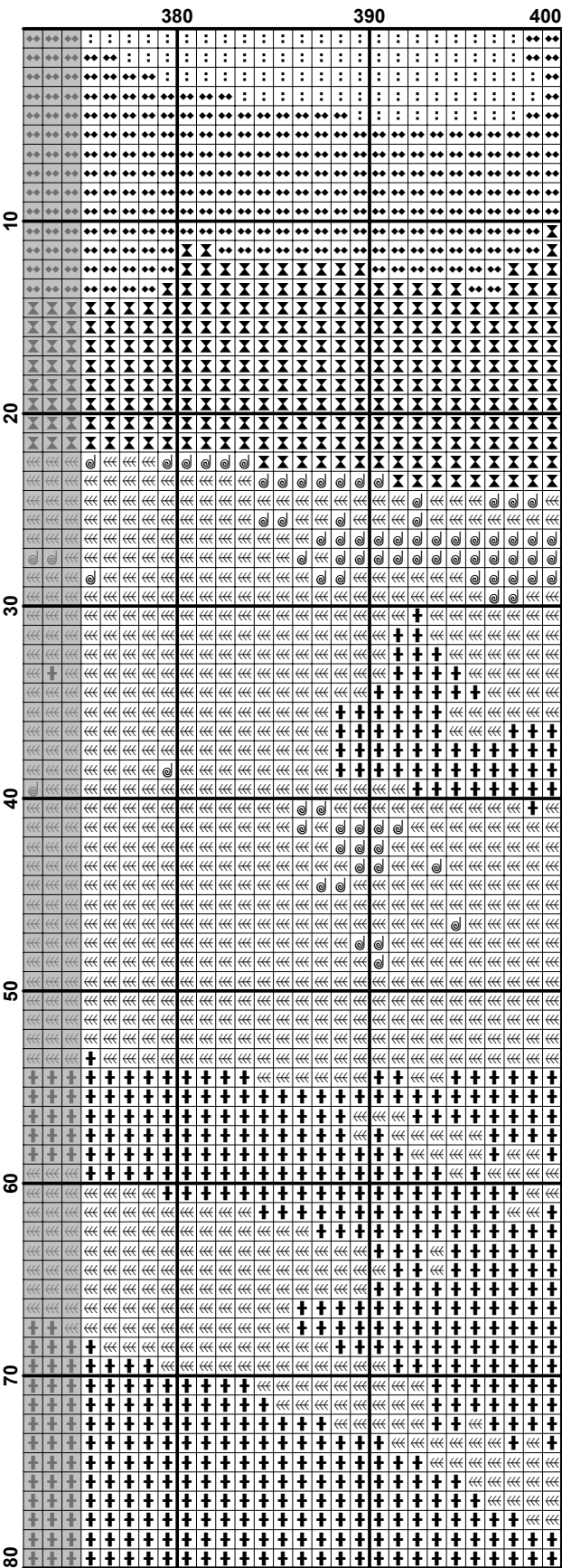






	250	260	270	280	290	300	310
10	X	X	X	X	X	X	X
20	X	X	X	X	X	X	X
30	X	X	X	X	X	X	X
40	X	X	X	X	X	X	X
50	X	X	X	X	X	X	X
60	X	X	X	X	X	X	X
70	X	X	X	X	X	X	X
80	X	X	X	X	X	X	X
90	X	X	X	X	X	X	X
100	X	X	X	X	X	X	X
110	X	X	X	X	X	X	X
120	X	X	X	X	X	X	X
130	X	X	X	X	X	X	X
140	X	X	X	X	X	X	X
150	X	X	X	X	X	X	X
160	X	X	X	X	X	X	X
170	X	X	X	X	X	X	X
180	X	X	X	X	X	X	X
190	X	X	X	X	X	X	X
200	X	X	X	X	X	X	X
210	X	X	X	X	X	X	X
220	X	X	X	X	X	X	X
230	X	X	X	X	X	X	X
240	X	X	X	X	X	X	X
250	X	X	X	X	X	X	X
260	X	X	X	X	X	X	X
270	X	X	X	X	X	X	X
280	X	X	X	X	X	X	X
290	X	X	X	X	X	X	X
300	X	X	X	X	X	X	X
310	X	X	X	X	X	X	X
320	X	X	X	X	X	X	X
330	X	X	X	X	X	X	X
340	X	X	X	X	X	X	X
350	X	X	X	X	X	X	X
360	X	X	X	X	X	X	X
370	X	X	X	X	X	X	X
380	X	X	X	X	X	X	X
390	X	X	X	X	X	X	X
400	X	X	X	X	X	X	X
410	X	X	X	X	X	X	X
420	X	X	X	X	X	X	X
430	X	X	X	X	X	X	X
440	X	X	X	X	X	X	X
450	X	X	X	X	X	X	X
460	X	X	X	X	X	X	X
470	X	X	X	X	X	X	X
480	X	X	X	X	X	X	X
490	X	X	X	X	X	X	X
500	X	X	X	X	X	X	X
510	X	X	X	X	X	X	X
520	X	X	X	X	X	X	X
530	X	X	X	X	X	X	X
540	X	X	X	X	X	X	X
550	X	X	X	X	X	X	X
560	X	X	X	X	X	X	X
570	X	X	X	X	X	X	X
580	X	X	X	X	X	X	X
590	X	X	X	X	X	X	X
600	X	X	X	X	X	X	X
610	X	X	X	X	X	X	X
620	X	X	X	X	X	X	X
630	X	X	X	X	X	X	X
640	X	X	X	X	X	X	X
650	X	X	X	X	X	X	X
660	X	X	X	X	X	X	X
670	X	X	X	X	X	X	X
680	X	X	X	X	X	X	X
690	X	X	X	X	X	X	X
700	X	X	X	X	X	X	X
710	X	X	X	X	X	X	X
720	X	X	X	X	X	X	X
730	X	X	X	X	X	X	X
740	X	X	X	X	X	X	X
750	X	X	X	X	X	X	X
760	X	X	X	X	X	X	X
770	X	X	X	X	X	X	X
780	X	X	X	X	X	X	X
790	X	X	X	X	X	X	X
800	X	X	X	X	X	X	X
810	X	X	X	X	X	X	X
820	X	X	X	X	X	X	X
830	X	X	X	X	X	X	X
840	X	X	X	X	X	X	X
850	X	X	X	X	X	X	X
860	X	X	X	X	X	X	X
870	X	X	X	X	X	X	X
880	X	X	X	X	X	X	X
890	X	X	X	X	X	X	X
900	X	X	X	X	X	X	X
910	X	X	X	X	X	X	X
920	X	X	X	X	X	X	X
930	X	X	X	X	X	X	X
940	X	X	X	X	X	X	X
950	X	X	X	X	X	X	X
960	X	X	X	X	X	X	X
970	X	X	X	X	X	X	X
980	X	X	X	X	X	X	X
990	X	X	X	X	X	X	X
1000	X	X	X	X	X	X	X

	310	320	330	340	350	360	370
10	...	...	...	...	...	...	...
20	...	...	...	...	...	...	...
30	...	...	...	...	...	...	...
40	...	...	...	...	...	...	...
50	...	...	...	...	...	...	...
60	...	...	...	...	...	...	...
70	...	...	...	...	...	...	...
80	...	...	...	...	...	...	...



	10	20	30	40	50	60
80						
90						
100						
110						
120						
130						
140						
150						

$$(16) \quad \dots \qquad \qquad \qquad (17)$$

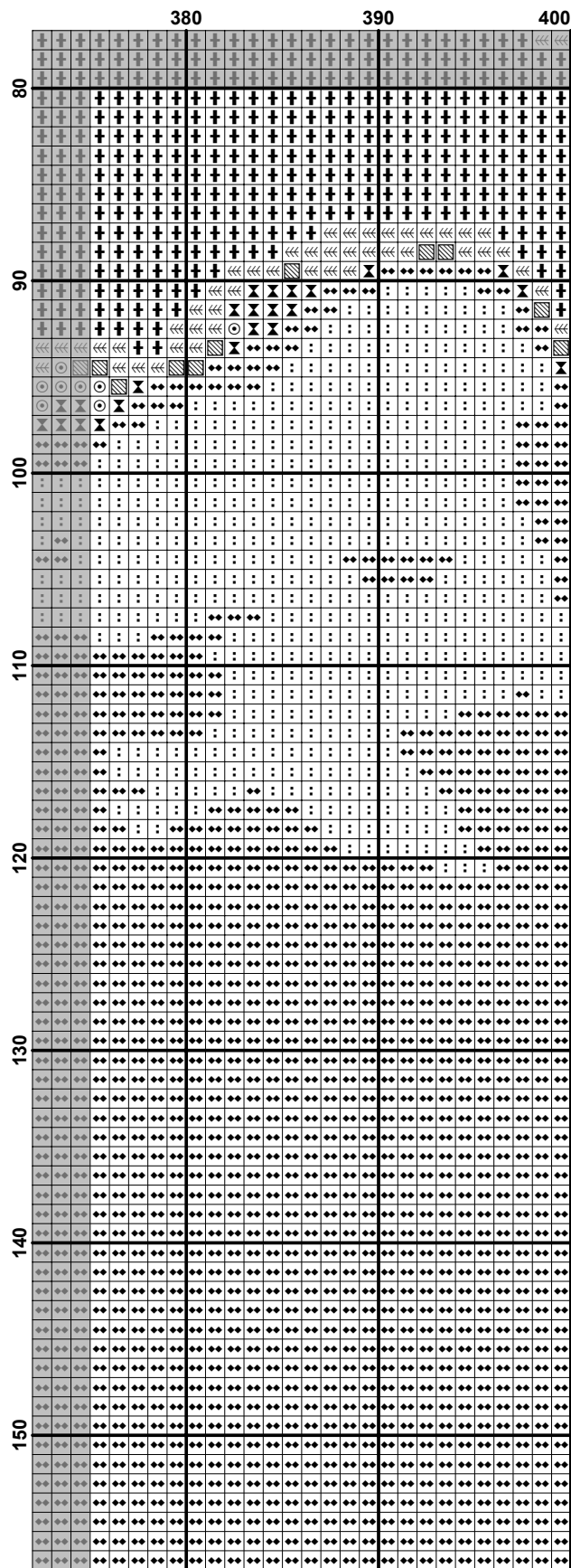
	130										140										150										160										170										180									
80	***										***										***										***										***										***									
	***										***										***										***										***										***									
	***										***										***										***										***										***									
	***										***										***										***										***										***									
	***										***										***										***										***										***									
90	***										***										***										***										***										***									
	***										***										***										***										***										***									
	***										***										***										***										***										***									
	***										***										***										***										***										***									
	***										***										***										***										***										***									
100	***										***										***										***										***										***									
	***										***										***										***										***										***									
	***										***										***										***										***										***									
	***										***										***										***										***										***									
	***										***										***										***										***										***									
110	***										***										***										***										***										***									
	***										***										***										***										***										***									
	***										***										***										***										***										***									
	***										***										***										***										***										***									
	***										***										***										***										***										***									
120	***										***										***										***										***										***									
	***										***										***										***										***										***									
	***										***										***										***										***										***									
	***										***										***										***										***										***									
	***										***										***										***										***										***									
130	***										***										***										***										***										***									
	***										***										***										***										***										***									
	***										***										***										***										***										***									
	***										***										***										***										***										***									
	***										***										***										***										***										***									
140	***										***										***										***										***										***									
	***										***										***										***										***										***									
	***										***										***										***										***										***									
	***										***										***										***										***										***									
	***										***										***										***										***										***									
150	***										***										***										***										***										***									
	***										***										***										***										***										***									
	***										***										***										***										***										***									
	***										***										***										***										***										***									
	***										***										***										***										***										***									

	190	200	210	220	230	240	250
80	⊗	⊗	⊗	⊗	⊗	⊗	⊗
81	⊗	⊗	⊗	⊗	⊗	⊗	⊗
82	⊗	⊗	⊗	⊗	⊗	⊗	⊗
83	⊗	⊗	⊗	⊗	⊗	⊗	⊗
84	⊗	⊗	⊗	⊗	⊗	⊗	⊗
85	⊗	⊗	⊗	⊗	⊗	⊗	⊗
86	⊗	⊗	⊗	⊗	⊗	⊗	⊗
87	⊗	⊗	⊗	⊗	⊗	⊗	⊗
88	⊗	⊗	⊗	⊗	⊗	⊗	⊗
89	⊗	⊗	⊗	⊗	⊗	⊗	⊗
90	⊗	⊗	⊗	⊗	⊗	⊗	⊗
91	⊗	⊗	⊗	⊗	⊗	⊗	⊗
92	⊗	⊗	⊗	⊗	⊗	⊗	⊗
93	⊗	⊗	⊗	⊗	⊗	⊗	⊗
94	⊗	⊗	⊗	⊗	⊗	⊗	⊗
95	⊗	⊗	⊗	⊗	⊗	⊗	⊗
96	⊗	⊗	⊗	⊗	⊗	⊗	⊗
97	⊗	⊗	⊗	⊗	⊗	⊗	⊗
98	⊗	⊗	⊗	⊗	⊗	⊗	⊗
99	⊗	⊗	⊗	⊗	⊗	⊗	⊗
100	⊗	⊗	⊗	⊗	⊗	⊗	⊗
101	⊗	⊗	⊗	⊗	⊗	⊗	⊗
102	⊗	⊗	⊗	⊗	⊗	⊗	⊗
103	⊗	⊗	⊗	⊗	⊗	⊗	⊗
104	⊗	⊗	⊗	⊗	⊗	⊗	⊗
105	⊗	⊗	⊗	⊗	⊗	⊗	⊗
106	⊗	⊗	⊗	⊗	⊗	⊗	⊗
107	⊗	⊗	⊗	⊗	⊗	⊗	⊗
108	⊗	⊗	⊗	⊗	⊗	⊗	⊗
109	⊗	⊗	⊗	⊗	⊗	⊗	⊗
110	⊗	⊗	⊗	⊗	⊗	⊗	⊗
111	⊗	⊗	⊗	⊗	⊗	⊗	⊗
112	⊗	⊗	⊗	⊗	⊗	⊗	⊗
113	⊗	⊗	⊗	⊗	⊗	⊗	⊗
114	⊗	⊗	⊗	⊗	⊗	⊗	⊗
115	⊗	⊗	⊗	⊗	⊗	⊗	⊗
116	⊗	⊗	⊗	⊗	⊗	⊗	⊗
117	⊗	⊗	⊗	⊗	⊗	⊗	⊗
118	⊗	⊗	⊗	⊗	⊗	⊗	⊗
119	⊗	⊗	⊗	⊗	⊗	⊗	⊗
120	⊗	⊗	⊗	⊗	⊗	⊗	⊗
121	⊗	⊗	⊗	⊗	⊗	⊗	⊗
122	⊗	⊗	⊗	⊗	⊗	⊗	⊗
123	⊗	⊗	⊗	⊗	⊗	⊗	⊗
124	⊗	⊗	⊗	⊗	⊗	⊗	⊗
125	⊗	⊗	⊗	⊗	⊗	⊗	⊗
126	⊗	⊗	⊗	⊗	⊗	⊗	⊗
127	⊗	⊗	⊗	⊗	⊗	⊗	⊗
128	⊗	⊗	⊗	⊗	⊗	⊗	⊗
129	⊗	⊗	⊗	⊗	⊗	⊗	⊗
130	⊗	⊗	⊗	⊗	⊗	⊗	⊗
131	⊗	⊗	⊗	⊗	⊗	⊗	⊗
132	⊗	⊗	⊗	⊗	⊗	⊗	⊗
133	⊗	⊗	⊗	⊗	⊗	⊗	⊗
134	⊗	⊗	⊗	⊗	⊗	⊗	⊗
135	⊗	⊗	⊗	⊗	⊗	⊗	⊗
136	⊗	⊗	⊗	⊗	⊗	⊗	⊗
137	⊗	⊗	⊗	⊗	⊗	⊗	⊗
138	⊗	⊗	⊗	⊗	⊗	⊗	⊗
139	⊗	⊗	⊗	⊗	⊗	⊗	⊗
140	⊗	⊗	⊗	⊗	⊗	⊗	⊗
141	⊗	⊗	⊗	⊗	⊗	⊗	⊗
142	⊗	⊗	⊗	⊗	⊗	⊗	⊗
143	⊗	⊗	⊗	⊗	⊗	⊗	⊗
144	⊗	⊗	⊗	⊗	⊗	⊗	⊗
145	⊗	⊗	⊗	⊗	⊗	⊗	⊗
146	⊗	⊗	⊗	⊗	⊗	⊗	⊗
147	⊗	⊗	⊗	⊗	⊗	⊗	⊗
148	⊗	⊗	⊗	⊗	⊗	⊗	⊗
149	⊗	⊗	⊗	⊗	⊗	⊗	⊗
150	⊗	⊗	⊗	⊗	⊗	⊗	⊗

	250	260	270	280	290	300	310
80							
90							
100							
110							
120							
130							
140							
150							







$$(22) \quad \dots \quad (23)$$

[illegible]

[illegible]

(26)

	250	260	270	280	290	300	310
160							
170							
180							
190							
200							
210							
220							
230							

(28)



[illegible]

[illegible]

[illegible]

[illegible]

[illegible]

[illegible]

[illegible]

[illegible]



[illegible]

[illegible]

[illegible]

[illegible]

[illegible]

[illegible]

	380										390										400										
310	*	H	4	L	L	L	L	H	)	)	O	O	8	/	8	*	*	*	/	/	/	/	/	/	/	/	/	/	*		
	*	*	8	)	8	L	L	L	/	O	)	O	O	8	8	8	*	*	*	/	/	/	/	/	/	/	/	/	/	*	
	*	*	L	L	/	)	8	8	/	H	8	O	)	O	8	8	8	*	8	/	/	/	/	/	/	/	/	/	/	H	
	*	*	L	L	L	/	8	*	L	*	8	)	)	O	8	*	8	/	/	/	/	/	/	/	/	/	/	/	/	*	
	*	*	L	L	L	8	/	L	*	8	)	)	)	)	4	8	*	8	/	/	/	/	/	/	/	/	/	/	/	*	
320	*	*	L	L	L	8	8	L	*	*	/	4	)	)	)	4	8	/	/	/	/	/	/	/	/	/	/	/	/	*	
	*	*	L	L	L	L	L	L	*	*	/	O	)	)	)	)	/	O	O	/	/	/	/	/	/	/	/	/	8	*	
	*	*	L	L	L	L	L	*	8	/	O	)	)	)	)	/	O	6	/	/	/	/	/	/	/	/	/	/	8	*	
	*	*	L	L	L	L	L	*	*	*	/	O	)	)	)	4	O	8	/	/	/	/	/	/	/	/	/	/	/	*	
	*	*	L	L	L	L	L	*	8	8	O	)	)	)	)	/	O	8	/	/	/	/	/	/	/	/	/	/	/	*	
330	*	*	L	L	L	L	L	*	8	8	)	)	)	)	4	8	/	/	/	/	/	/	/	/	/	/	/	/	/	*	
	*	*	L	L	L	L	L	*	8	8	)	)	)	)	O	8	8	/	/	/	/	/	/	/	/	/	/	/	/	*	
	*	*	L	L	L	L	L	*	8	/	)	5	)	5	)	8	8	/	/	/	/	/	/	/	/	/	/	/	/	L	
	*	H	*	L	L	L	L	*	/	6	O	O	4	)	)	O	8	8	8	/	/	/	/	/	/	/	/	/	/	*	
	*	8	*	L	L	L	L	*	/	)	O	8	4	O	/	*	8	8	8	/	/	/	/	/	/	/	/	/	/	*	
340	*	8	*	L	*	8	*	8	/	6	8	8	*	4	4	8	*	*	8	/	8	/	/	/	/	/	/	/	/	*	L
	*	*	*	L	*	8	/	O	)	)	O	/	O	4	8	8	*	*	8	/	8	/	/	/	/	/	/	/	/	8	L
	*	*	*	L	*	8	O	)	O	O	8	)	O	8	8	*	*	8	8	8	/	/	/	/	/	/	/	/	/	8	L
	*	*	*	L	L	L	*	8	8	O	/	/	O	8	8	*	*	8	8	8	/	/	/	/	/	/	/	/	/	8	L
	*	*	L	L	L	L	*	8	8	6	8	O	8	8	*	*	8	8	8	/	/	/	/	/	/	/	/	/	/	8	L
350	*	*	L	L	L	L	L	*	8	/	8	8	8	8	*	*	*	8	/	/	/	/	/	/	/	/	/	/	/	8	L
	*	*	L	L	L	L	L	*	8	8	/	8	8	8	*	*	*	8	/	/	/	/	/	/	/	/	/	/	/	8	L
	*	*	L	L	L	L	L	*	8	8	8	/	8	8	8	*	*	8	/	/	/	/	/	/	/	/	/	/	/	8	L
	*	*	L	L	L	L	L	*	8	8	8	8	8	8	*	*	8	/	/	/	/	/	/	/	/	/	/	/	/	8	L
	*	*	L	L	L	L	L	*	8	8	8	8	8	8	*	*	8	/	/	/	/	/	/	/	/	/	/	/	/	8	L
360	*	*	L	L	L	L	L	*	8	/	8	8	8	8	*	*	*	8	/	/	/	/	/	/	/	/	/	/	/	8	L
	*	*	L	L	L	L	L	*	8	/	8	8	8	8	*	*	*	8	/	/	/	/	/	/	/	/	/	/	/	8	L
	*	*	L	L	L	L	L	*	8	/	8	8	8	8	*	*	*	8	/	/	/	/	/	/	/	/	/	/	/	8	L
	*	*	L	L	L	L	L	*	8	/	8	8	8	8	*	*	*	8	/	/	/	/	/	/	/	/	/	/	/	8	L
	*	*	L	L	L	L	L	*	8	/	8	8	8	8	*	*	*	8	/	/	/	/	/	/	/	/	/	/	/	8	L
370	*	*	L	L	L	L	L	*	8	/	8	8	8	8	*	*	*	8	/	/	/	/	/	/	/	/	/	/	/	8	L
	*	*	L	L	L	L	L	*	8	/	8	8	8	8	*	*	*	8	/	/	/	/	/	/	/	/	/	/	/	8	L
	*	*	L	L	L	L	L	*	8	/	8	8	8	8	*	*	*	8	/	/	/	/	/	/	/	/	/	/	/	8	L
	*	*	L	L	L	L	L	*	8	/	8	8	8	8	*	*	*	8	/	/	/	/	/	/	/	/	/	/	/	8	L
	*	*	L	L	L	L	L	*	8	/	8	8	8	8	*	*	*	8	/	/	/	/	/	/	/	/	/	/	/	8	L
380	3	3	L	L	L	L	L	L	*	*	L	*	O	8	*	*	*	*	*	*	*	*	*	*	*	*	*	*	*	*	*
	3	3	L	L	L	L	L	L	L	*	*	L	*	O	/	*	*	*	*	*	*	*	*	*	*	*	*	*	*	*	*
	8	3	L	L	L	L	L	L	L	*	*	L	*	8	*	8	*	*	*	*	*	*	*	*	*	*	*	*	*	*	*
	8	8	3	L	L	L	L	L	L	L	L	*	L	8	*	8	*	*	*	*	*	*	*	*	*	*	*	*	*	*	*
	8	8	8	3	L	L	L	L	L	L	L	L	L	/	*	8	8	*	*	*	*	*	*	*	*	*	*	*	*	*	*
390	4	/	8	8	8	*	3	L	L	L	*	L	*	*	*	*	*	*	*	*	*	*	*	*	*	*	*	*	*	*	*
	4	8	/	8	8	3	3	L	L	L	L	L	L	*	*	*	*	*	*	*	*	*	*	*	*	*	*	*	*	*	*
	5	4	8	/	/	8	H	3	L	L	L	L	L	*	*	*	*	*	*	*	*	*	*	*	*	*	*	*	*	*	*
	4	5	4	8	8	8	H	L	L	L	L	L	L	*	*	*	*	*	*	*	*	*	*	*	*	*	*	*	*	*	*
	O	/	5	4	/	8	8	3	L	L	L	L	L	L	/	*	8	8	*	*	*	*	*	*	*	*	*	*	*	*	*
400	4	5	)	8	/	8	8	3	3	L	L	L	L	L	L	*	*	*	*	*	*	*	*	*	*	*	*	*	*	H	*
	/	4	)	4	/	8	8	3	3	L	L	L	L	L	L	*	*	*	*	*	*	*	*	*	*	*	*	*	*	8	*
	8	4	)	5	4	)	4	8	H	3	L	L	L	L	L	L	*	*	*	*	*	*	*	*	*	*	*	*	8	8	*
	8	8	4	)	)	4	8	8	8	3	3	L	L	L	L	L	*	*	*	*	*	*	*	*	*	*	*	*	8	8	*
	8	8	/	4	)	4	8	8	H	3	L	L	L	L	L	L	*	*	*	*	*	*	*	*	*	*	*	*	8	8	*

[illegible]



	70	80	90	100	110	120
390	...	...	...	...	...	...
400	...	...	...	...	...	...
410	...	...	...	...	...	...
420	...	...	...	...	...	...
430	...	...	...	...	...	...
440	...	...	...	...	...	...
450	...	...	...	...	...	...
460	...	...	...	...	...	...

$$(45) \quad \mathcal{L}(\mathcal{A}) = \mathcal{L}(\mathcal{B}) \quad (46)$$

(47)

	250	260	270	280	290	300	310
390	♂	♂	♂	♂	♂	♂	♂
400	♂	♂	♂	♂	♂	♂	♂
410	♂	♂	♂	♂	♂	♂	♂
420	♂	♂	♂	♂	♂	♂	♂
430	♂	♂	♂	♂	♂	♂	♂
440	♂	♂	♂	♂	♂	♂	♂
450	♂	♂	♂	♂	♂	♂	♂
460	♂	♂	♂	♂	♂	♂	♂

	310	320	330	340	350	360	370
390	3 3	3 3	3 3	3 3	3 3	3 3	3 3
400	3 3	3 3	3 3	3 3	3 3	3 3	3 3
410	3 3	3 3	3 3	3 3	3 3	3 3	3 3
420	3 3	3 3	3 3	3 3	3 3	3 3	3 3
430	3 3	3 3	3 3	3 3	3 3	3 3	3 3
440	3 3	3 3	3 3	3 3	3 3	3 3	3 3
450	3 3	3 3	3 3	3 3	3 3	3 3	3 3
460	3 3	3 3	3 3	3 3	3 3	3 3	3 3

[illegible]

[illegible]

[illegible]



$$(52) \quad \frac{1}{\Gamma(\alpha)} \int_0^t (t-s)^{\alpha-1} f(s) ds = \frac{1}{\Gamma(\alpha)} \int_0^t (t-s)^{\alpha-1} f(s) ds + \frac{1}{\Gamma(\alpha)} \int_t^\infty (t-s)^{\alpha-1} f(s) ds$$

$$(53) \quad \dots \quad (54)$$

	250	260	270	280	290	300	310
470	...	...	...	...	...	...	...
480	...	...	...	...	...	...	...
490	...	...	...	...	...	...	...
500	...	...	...	...	...	...	...
510	...	...	...	...	...	...	...
520	...	...	...	...	...	...	...
530	...	...	...	...	...	...	...
540	...	...	...	...	...	...	...

[illegible]

[illegible]

$$(57) \quad \frac{1}{\Gamma(\alpha)} \int_0^t (t-s)^{\alpha-1} f(s) ds = \frac{1}{\Gamma(\alpha)} \int_0^t (t-s)^{\alpha-1} f(s) ds + \frac{1}{\Gamma(\alpha)} \int_t^\infty (t-s)^{\alpha-1} f(s) ds$$

[illegible]

[illegible]



[illegible]

$$(61) \quad \frac{1}{\Gamma(\alpha)} \int_0^t (t-s)^{\alpha-1} f(s) ds = \frac{1}{\Gamma(\alpha)} \int_0^t (t-s)^{\alpha-1} f(s) ds + \frac{1}{\Gamma(\alpha)} \int_t^\infty (t-s)^{\alpha-1} f(s) ds$$

[illegible]

[illegible]

[illegible]

[illegible]

[illegible]

[illegible]



[illegible]

	310	320	330	340	350	360	370
620	8						
630	6						
640	6						
650	6						
660	6						
670	6						
680	6						
690	6						



[illegible]

[illegible]

[illegible]

[illegible]

(76)



(77)

[illegible]



	70	80	90	100	110	120
770	5	5	5	5	5	5
780	5	5	5	5	5	5
790	5	5	5	5	5	5
800	5	5	5	5	5	5
810	5	5	5	5	5	5
820	5	5	5	5	5	5
830	5	5	5	5	5	5
840	5	5	5	5	5	5
850	5	5	5	5	5	5

	130						140						150						160						170						180																	
770	<div></div>																																															
780	<div></div>																																															
790	<div></div>																																															
800	<div></div>																																															
810	<div></div>																																															
820	<div></div>																																															
830	<div></div>																																															
840	<div></div>																																															
850	<div></div>																																															

[illegible]

[illegible]







[illegible]

[illegible]

[illegible]

[illegible]

[illegible]

[illegible]

[illegible]