



**Free Knitting Pattern**  
**Lion Brand® Vanna's Choice® Baby - Vanna's Choice®**  
**Heirloom Baby Blanket**  
Pattern Number: 80798AD



This pattern requires the ability to read charts.

**Free Knitting Pattern from Lion Brand Yarn**  
**Lion Brand® Vanna's Choice® Baby - Vanna's Choice®**  
**Heirloom Baby Blanket**  
Pattern Number: 80798AD

**SKILL LEVEL:** Intermediate

**SIZE:** One Size

Finished Size: 36x48 inches

**CORRECTIONS:** None as of Jun 3, 2010. To check for later updates, click [here](#).

**MATERIALS**

- 840-098 Lion Brand Vanna's Choice Baby: Lamb  
2 Balls
- 860-101 Lion Brand Vanna's Choice Yarn: Pink  
2 Balls
- 860-142 Lion Brand Vanna's Choice Yarn: Rose  
2 Balls
- Lion Brand Knitting Needles- Size 9 [5.5 mm]
- Large-Eye Blunt Needles (Set of 6)
- Lion Brand Cable Needles (Set of 2)

**GAUGE:**

16 sts + 22 rows = 4 in. (10 cm) in St st (k on RS, p on WS). BE SURE TO CHECK YOUR GAUGE. When you match the gauge in a pattern, your project will be the size specified in the pattern and the materials specified in the pattern will be sufficient. If it takes you less stitches and rows to make a 4 in. [10 cm] square, try using a smaller size hook or needles; if more stitches and rows, try a larger size hook or needles.

**STITCH EXPLANATION:**

**BC** Sl 1 st to cable needle and hold in back, k2, then p1 from cable needle.

**FC** Sl 2 sts to cable needle and hold in front, p1, then k2 from cable needle.

**M1 (make 1)** An increase worked by lifting the horizontal thread lying between the needles and placing it onto left needle. Knit this new stitch through the back loop.

**sk2p** Sl 1 as if to knit, k2tog, pass slipped stitch over—2 sts decreased.

**ssk (slip, slip, knit)** Sl next 2 sts as if to knit, one at a time, to right needle; insert left needle into fronts of these 2 sts and knit them together.

**Aran Diamond and Bobble Pattern (worked over 19 sts)**

**Rows 1 and 3 (WS):** K7, p2, k1, p2, k7.

**Row 2:** K1, p6, sl next 3 sts to cable needle and hold in back, k2, then sl the p st from cable needle back to left needle and p it, then k2 from cable needle; p6, k1.

**Row 4:** K1, p5, BC, k1, FC, p5, k1.

**Row 5 and all following WS rows:** K the knits and p the purls.

**Row 6:** K1, p4, BC, k1, p1, k1, FC, p4, k1.

**Row 8:** K1, p3, BC, (k1, p1) twice, k1, FC, p3, k1.

**Row 10:** K1, p2, BC, (k1, p1) 3 times, k1, FC, p2, k1.

**Row 12:** K1, p2, FC, (p1, k1) 3 times, p1, BC, p2, k1.

**Row 14:** K1, p3, FC, (p1, k1) twice, p1, BC, p3, k1.

**Row 16:** K1, p4, FC, p1, k1, p1, BC, p4, k1.

**Row 18:** K1, p5, FC, p1, BC, p5, k1.

**Row 20:** Rep Row 2.

**Row 22:** K1, p5, BC, p1, FC, p5, k1.

**Row 24:** K1, p4, BC, p3, FC, p4, k1.

**Row 26:** K1, p4, k2, p2, make Bobble as follows: (k1, yo, k1, yo, k1) all in next st; turn and p5; turn and k5; turn and p2tog, p1, p2tog; turn and sk2p (Bobble made); p2, k2, p4, k1.

**Row 28:** K1, p4, FC, p3, BC, p4, k1.

**Row 30:** Rep Row 18.

Rep Rows 1-30 for Aran Diamond and Bobble Pattern.

**Dragon Skin Pattern (multiple of 26 sts + 2)**

**Row 1 and all WS Rows:** K1, purl to last st, k1.

**Row 2:** K1, \*k1, M1, ssk, k4, k2tog, k3, M1, k2, M1, k3, ssk, k4, k2tog, M1, k1; rep from \* across to last st, k1.

**Row 4:** K1, \*k1, M1, k1, ssk, k2, k2tog, k4, M1, k2, M1, k4, ssk, k2, k2tog, k1, M1, k1; rep from \* across to last st, k1.

**Row 6:** K1, \*k1, M1, k2, ssk, k2tog, k5, M1, k2, M1, k5, ssk, k2tog, k2, M1, k1; rep from \* across to last st, k1.

**Row 8:** K1, \*k1, M1, k3, ssk, k4, k2tog, M1, k2, M1, ssk, k4, k2tog, k3, M1, k1; rep from \* across to last st, k1.

**Row 10:** K1, \*k1, M1, k4, ssk, k2, k2tog, k1, M1, k2, M1, k1, ssk, k2, k2tog, k4, M1, k1; rep from \* across to last st, k1.

**Row 12:** K1, \*k1, M1, k5, ssk, k2tog, k2, (M1, k2) twice, ssk, k2tog, k5, M1, k1; rep from \* across to last st, k1.

Rep Rows 1-12 for Dragon Skin Pattern.

**Embossed Twining Vine Leaf (worked over 28 sts)**

**Row 1 (WS):** K6, p5, k4, p3, k10.

**Row 2:** K1, p7, p2tog, k into front and then back of next st (kfb - knit inc made), k2, p4, k2, yo, k1, yo, k2, p5, k1 – 30 sts.

**Row 3:** K6, p7, k4, p2, k1, p1, k9.

**Row 4:** K1, p6, p2tog, k1, p into front and then back of next st (pfb - purl inc made), k2, p4, k3, yo, k1, yo, k3, p5, k1 – 32sts.

**Row 5:** K6, p9, k4, p2, k2, p1, k8.

**Row 6:** K1, p5, p2tog, k1, pfb in next st, p1, k2, p4, ssk, k5, k2tog, p5, k1 – 30 sts.

**Row 7:** K6, p7, k4, p2, k3, p1, k7.

**Row 8:** K1, p4, p2tog, k1, pfb in next st, p2, k2, p4, ssk, k3, k2tog, p5, k1 – 28 sts.

**Row 9:** K6, p5, k4, p2, k4, p1, k6.

**Row 10:** K1, p5, yo, k1, yo, p4, k2, p4, ssk, k1, k2tog, p5, k1.

**Row 11:** K6, p3, k4, p2, k4, p3, k6.

**Row 12:** K1, p5, (k1, yo) twice, k1, p4, k1, M1, k1, p2tog, p2, sk2p, p5, k1.

**Row 13:** K10, p3, k4, p5, k6.

**Row 14:** K1, p5, k2, yo, k1, yo, k2, p4, k1, kfb in next st, k1, p2tog, p7, k1 – 30 sts.

**Row 15:** K9, p1, k1, p2, k4, p7, k6.

**Row 16:** K1, p5, k3, yo, k1, yo, k3, p4, k2, pfb in next st, k1, p2tog, p6, k1 – 32 sts.

**Row 17:** K8, p1, k2, p2, k4, p9, k6.

**Row 18:** K1, p5, ssk, k5, k2tog, p4, k2, p1, pfb in next st, k1, p2tog, p5, k1 – 30 sts.

**Row 19:** K7, p1, k3, p2, k4, p7, k6.

**Row 20:** K1, p5, ssk, k3, k2tog, p4, k2, p2, pfb in next st, k1, p2tog, p4, k1 – 28 sts.

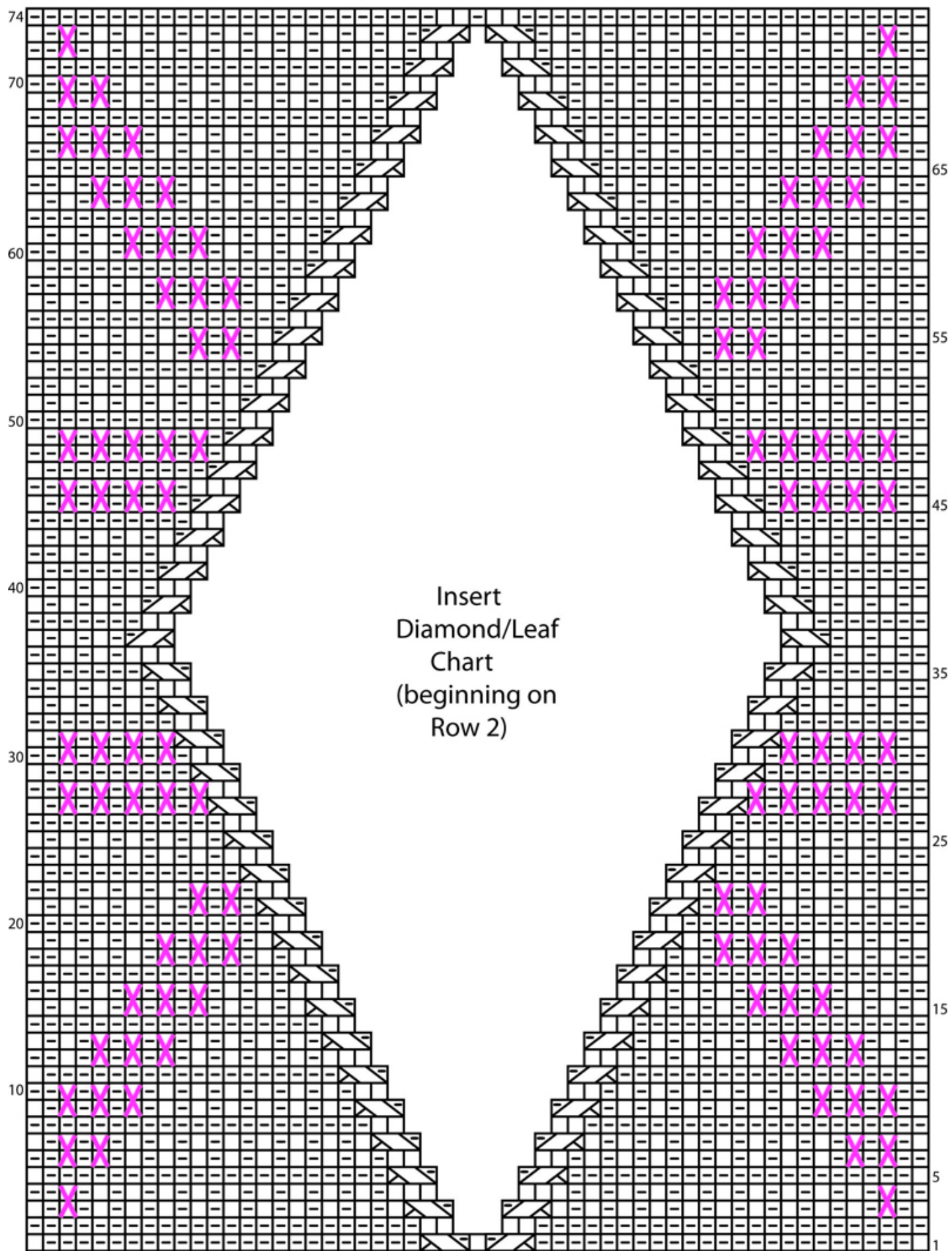
**Row 21:** K6, p1, k4, p2, k4, p5, k6.

**Row 22:** K1, p5, ssk, k1, k2tog, p4, k2, p4, yo, k1, yo, p5, k1.

**Row 23:** K6, p3, k4, p2, k4, p3, k6.

**Row 24:** K1, p5, sk2p, p2, p2tog, k1, M1, k1, p4, (k1, yo) twice, k1, p5, k1.

Rep Rows 1-24 for Embossed Twining Vine Leaf.



	k on RS, p on WS
	p on RS, k on WS
	yarn over
	k2tog
	ssk
	sk2p
	k tbl on RS, p tbl on WS
	BC
	FC
	work cross stitch after knitting is complete

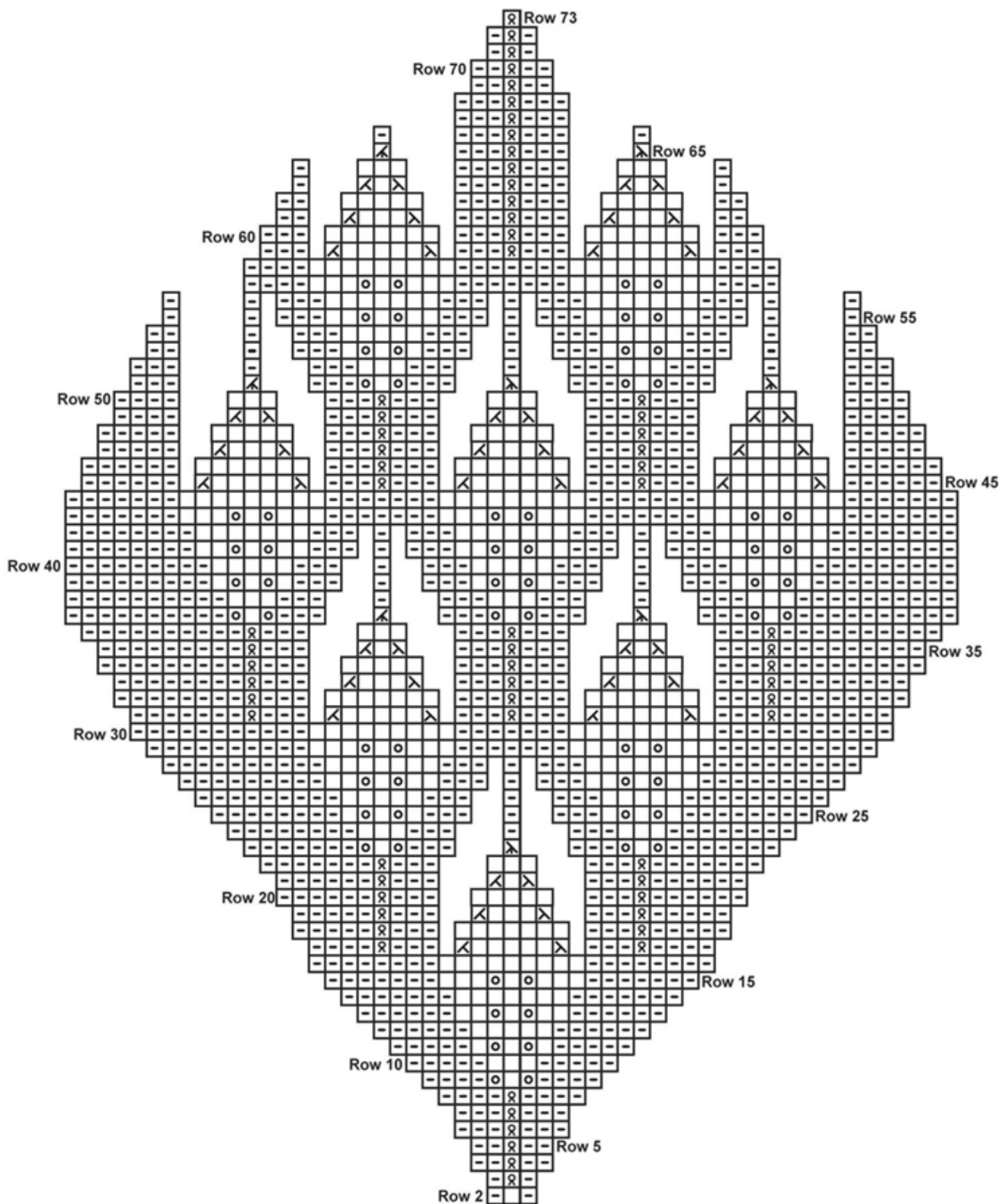
### CENTER BLOCK (make 1)

**Note:** Work charts from right to left on RS rows, from left to right on WS rows.

With A, cast on 55 sts.

**Set Up Row (WS):** K25, p2, k1, p2, k25.

Beg with Row 1 (RS), work Center Block chart, inserting Diamond/Leaf Chart (beg at Row 2). Bind off.



#### STRIP 1 (make 2)

With B, cast on 19 sts.

Work Aran and Diamond Bobble Pattern until piece measures about 14 in. (35.5 cm) from beg. Bind off.

#### STRIP 2 (make 2)

With B, cast on 19 sts.

Work as for Strip 1, but beg with Row 6 of Aran and Diamond Bobble Pattern.

#### STRIP 3 (make 4)

With C, cast on 80 sts

Work in Dragon Skin Pattern until piece measures about 7 in. (18 cm) from beg. Bind off.



**SQUARE 4 (make 4)**

With A, cast on 19 sts.

**Row 1 (RS):** K1, \*k2, p2; rep from \* to last 2 sts, k1, k1.

**Row 2 and all WS rows:** K the knits and p the purls.

**Row 3:** K1, \*k1, p2, k1; rep from \* to last 2 sts, k2.

**Row 5:** K1, \*p2, k2; rep from \* to last 2 sts, p1, k1.

**Row 7:** K1, \*p1, k2, p1; rep from \* to last 2 sts, p1, k1.

**Row 8:** Rep Row 2.

Rep Rows 1-8 until piece measures about 4 in. (10 cm) from beg. Bind off.

**SQUARE 5 (make 4)**

With B, cast on 27 sts.

**Rows 1 and 5 (RS):** K1, \*k1, p1, k1, p1; rep from \* to last 2 sts, k2.

**Row 2 and all WS rows:** K the knits and p the purls.

**Row 3:** K1, \*p1, k3; rep from \* to last 2 sts, p1, k1.

**Row 7:** K1, \*k2, p1, k1; rep from \* to last 2 sts, k2.

**Row 8:** Rep Row 2.

Rep Rows 1-8 until piece measures about 7 in. (18 cm) from beg. Bind off.

**END STRIP (make 2)**

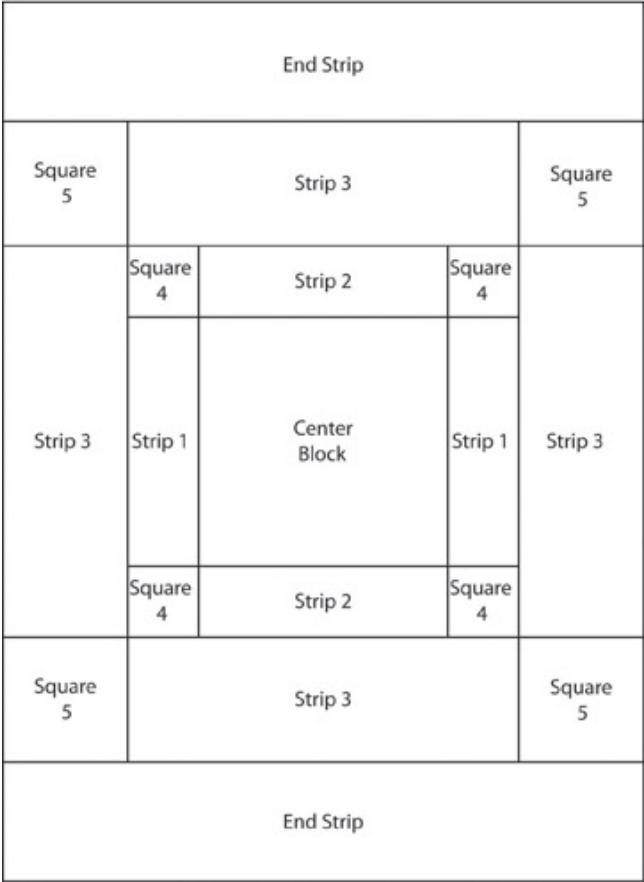
With A, cast on 28 sts.

Work Embossed Twining Vine Leaf until piece measures about 36 in. (91.5 cm) from beg. Bind off.

**FINISHING**

**Assembly**

Following Assembly Diagram, sew pieces together. With C, and following Center Block Chart, embroider cross sts on Center Block. Weave in ends.



ABBREVIATIONS / REFERENCES	
Click for explanation and illustration	
<u>beg = begin(s)(ning)</u>	<u>fpdc = front post double crochet</u>
<u>inc = increas(e)(s)(ing)</u>	<u>k = knit</u>
<u>k2tog = knit 2 together</u>	<u>rep = repeat(s)(ing)</u>
<u>RS = right side</u>	<u>sl = slip</u>
<u>st(s) = stitch(es)</u>	<u>tbl = through the back loop</u>
<u>WS = wrong side</u>	<u>yo = yarn over</u>

Learn to knit instructions: <http://learnToKnit.LionBrand.com>

Every effort has been made to have the knitting and crochet instructions accurate and complete. We cannot be responsible for variance of individual knitters and crocheters, human errors, or typographical mistakes.

*\*Vanna's Choice® (Article #860) is a 4-ply worsted-weight 100% acrylic yarn. • Solids in 3.5 oz/100g (170 yd/156 m) balls • Prints in 3 oz/85 g (145 yd/133 m) balls 100% acrylic*



We want your project to be a success! If you need help with this or any other Lion Brand pattern, e-mail support is available 7 days per week. Just click [here](#) to explain your problem and someone will help you!

**For thousands of free patterns, visit our website [www.LionBrand.com](http://www.LionBrand.com)**  
**To order visit our website [www.lionbrand.com](http://www.lionbrand.com) or call: (800) 258-YARN (9276) any time!**

Copyright ©1998-2009 Lion Brand Yarn Company, all rights reserved. No pattern or other material may be reproduced -- mechanically, electronically, or by any other means, including photocopying -- without written permission of Lion Brand Yarn Company.