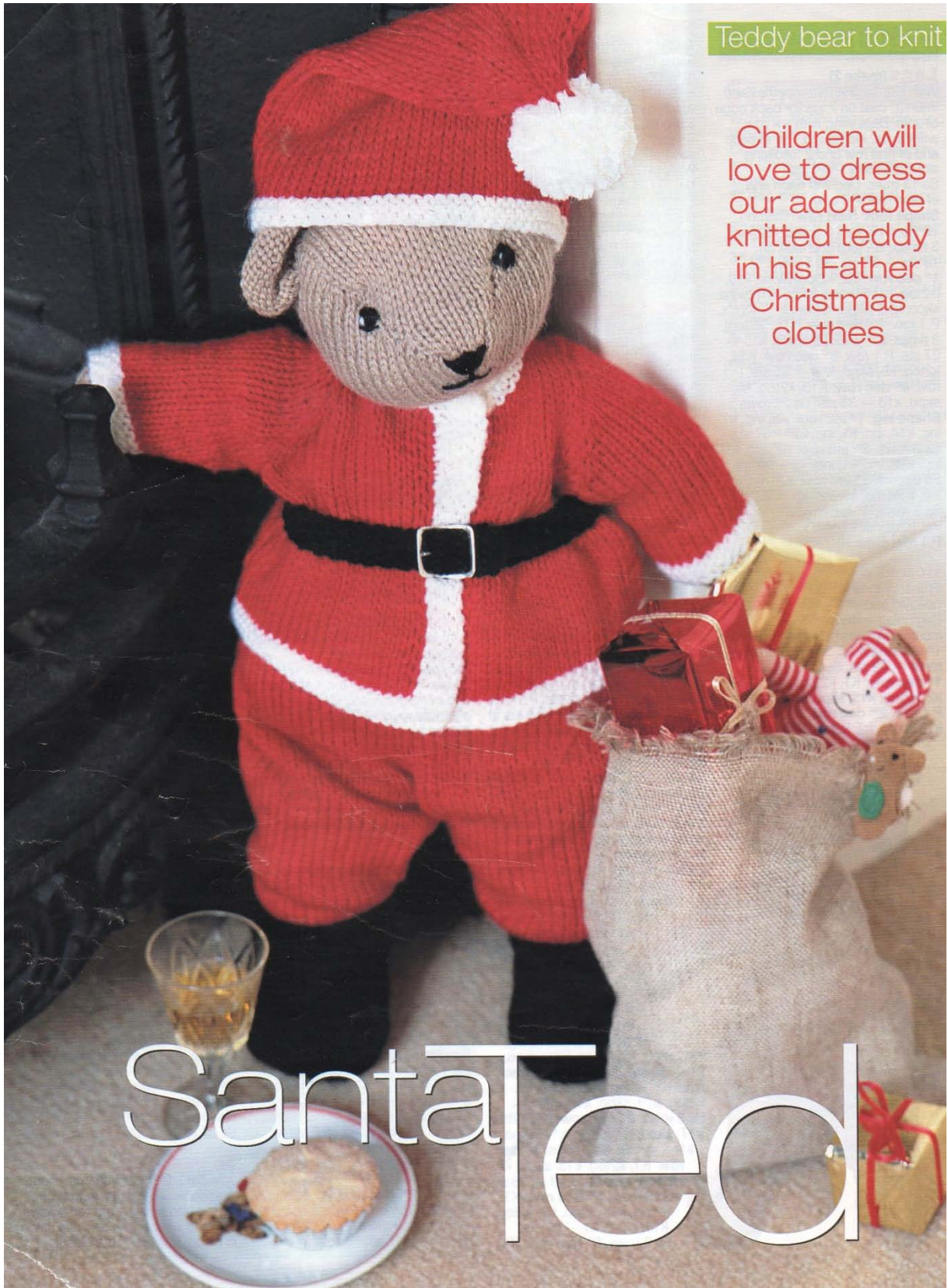


Teddy bear to knit

Children will love to dress our adorable knitted teddy in his Father Christmas clothes



SantaTed

Teddy

Legs (make 2)

With No. 10 (3¼ mm) needles and Walnut, cast on 7 sts for back edge of sole. Beginning with a k row, work in ss, increasing 1 st at each end of first row and 2 following alternate rows — 13 sts. Ss 13 rows. Dec 1 st each end of next row. P 1 row.

Shape foot: Next row: Cast on 18 sts, k19, [inc] 3 times, k2, [inc] 3 times, k2, turn and cast on 18 sts — 53 sts. Ss 5 rows.

1st dec row: [K2, k2tog] twice, k10, [k2tog, k1] 3 times, [skpo, k1] twice, skpo, k10, [skpo, k2] twice — 43 sts.

P 1 row. **2nd dec row:** K15, [k2tog] 3 times, k1, [skpo] 3 times, k15 — 37 sts. P 1 row. **3rd dec row:** K14, k2tog, k5, skpo, k14 — 35 sts. P 1 row.

4th dec row: K13, k2tog, k5, skpo, k13 — 33 sts. Ss 21 rows.

Shape leg: **1st inc row:** K6, inc, k1, inc, k14, inc, k1, inc, k7 — 37 sts. Ss 3 rows. **2nd inc row:** K7, inc, k1, inc, k16, inc, k1, inc, k8 — 41 sts. Ss 3 rows. **3rd inc row:** K8, inc, k1, inc, k18, inc, k1, inc, k9 — 45 sts. Ss 3 rows. **4th inc row:** K9, inc, k1, inc, k20, inc, k1, inc, k10 — 49 sts. P 1 row. Cast off.

Body

Front: With No. 10 (3¼ mm) needles and Walnut, cast on 32 sts. Beginning with a k row, work in ss, increasing 1 st at each end of the 1st row and 4 following alternate rows — 42 sts. Ss 21 rows.

1st dec row: K1, k2tog, k15, skpo, k2, k2tog, k15, skpo, k1 — 38 sts. P 1 row. **2nd dec row:** K1, k2tog, k13, skpo, k2, k2tog, k13, skpo, k1 — 34 sts. P 1 row.



Materials

Teddy: 2 x 100 g balls of Hayfield Bonus DK in Walnut (927). Oddments of Black and White yarn for embroidery. No. 10 (3¼ mm) knitting needles; washable toy stuffing.

Santa suit: 2 x 100 g balls of Sirdar Country Style DK in Cherry (402) and 1 ball in each of Black (417) and White (412). No. 8 (4 mm) and No. 10 (3¼ mm) knitting needles. Length of narrow elastic; 2 small press studs; 1 small buckle. For stockists, write to: Sirdar Spinning Ltd, Flanshaw Lane, Alverthorpe, Wakefield, West Yorkshire WF2 9ND (01924 371501).

Tension and measurements

24 stitches and 30 rows, to 10 x 10 cm over stocking stitch using No. 10 (3¼ mm) needles. 22 stitches and 28 rows, to 10 x 10 cm over stocking stitch using No. 8 (4 mm) needles. The toy will measure 41 cm/16½ in tall.

Abbreviations

K, knit; **p**, purl; **st**, stitch; **tog**, together; **sl**, slip; **inc**, increase (by working twice into same st); **dec**,

3rd dec row: K1, k2tog, k11, skpo, k2, k2tog, k11, skpo, k1 — 30 sts. P 1 row. **4th dec row:** K1, k2tog, k9, skpo, k2, k2tog, k9, skpo, k1 — 26 sts. P 1 row.

**** Shape armholes:** Cast off 2 sts at beginning of next 2 rows.

5th dec row: K1, k2tog, k to last 3 sts, skpo, k1. P 1 row. Work 5th dec row again — 18 sts. Ss 7 rows. Inc 1 st at each end of next row and following 4th row — 22 sts. P 1 row.

Shape shoulders: Cast off 6 sts at beginning of next 2 rows — 10 sts. Ss 2 rows. Cast off for neck edge.

Base: With No. 10 (3¼ mm) needles and Walnut, cast on 32 sts. Beginning with a k row, ss 4 rows. **Dec row:** K1, k2tog, k to last 3 sts, skpo, k1. P 1 row. Repeat last 2 rows 3 times more, then the dec row again — 22 sts. Cast off 2 sts at beginning of next 4 rows — 14 sts. Cast off.

Back: With right side facing, No. 10 (3¼ mm) needles and Walnut, pick up and k 54 sts around shaped edge of base, leaving cast on edge free. Beginning with a p row, ss 11 rows.

1st dec row: K1, k2tog, k21, skpo, k2, k2tog, k21, skpo, k1 — 50 sts. Ss 3 rows. **2nd dec row:** K1, k2tog, k19, skpo, k2, k2tog, k19, skpo, k1 — 46 sts. Ss 3 rows. **3rd dec row:** K1, k2tog, k17, skpo, k2, k2tog, k17, skpo, k1 — 42 sts. Ss 3 rows. **4th dec row:** K1, k2tog, k15, skpo, k2, k2tog, k15, skpo, k1 — 38 sts. Ss 3 rows. **5th dec row:** K1, k2tog, k13, skpo, k2, k2tog, k13, skpo, k1 — 34 sts. Ss 3 rows. **6th dec row:** K1,



decrease (by working 2 sts tog): **psso**, pass sl st over; **ss**, stocking st (k on right side and p on wrong side); **skpo**, (sl1, k1, psso); **gst**, garter st (every row k).

Note

Instructions in square brackets are worked as stated after 2nd bracket.

k2tog, k11, skpo, k2, k2tog, k11, skpo, k1 — 30 sts. Ss 3 rows.

7th dec row: K1, k2tog, k9, skpo, k2, k2tog, k9, skpo, k1 — 26 sts. P 1 row. Work as front from ** to **.

Arms (make 2)

With No. 10 (3¼ mm) needles and Walnut, cast on 12 sts.

Inc row: K1, [inc kwise] to end — 23 sts. Ss 19 rows. Inc 1 st at each end of next row and 2 following alternate rows — 29 sts. Ss 3 rows.

Shape top: Cast off 2 sts at beginning of next 2 rows. Dec 1 st at each end of next row and 3 following alternate rows — 17 sts. P 1 row. **Next row:** K1, [k2tog] 3 times, k3, [skpo] 3 times — 11 sts. P 1 row. Cast off for top edge.

Head

Right side: With No. 10 (3¼ mm) needles and Walnut, cast on 14 sts for neck edge. Beginning with a k row, ss 2 rows.

1st inc row: Inc, k to last st, inc. P 1 row. **2nd inc row:** Inc, k to end.

Trousers

Left leg

With No. 8 (4 mm) needles and Cherry, cast on 41 sts. Beginning with a k row, ss 10 rows. Inc 1 st at each end of next row and 5 following 4th rows, then on 3 following alternate rows — 59 sts. Ss 3 rows. **

Shape crotch: Cast off 2 sts at beginning of next row and 4 sts on following row. **1st dec row:** K1, k2tog, k to last 3 sts, skpo, k1. P 1 row. **2nd dec row:** K1, k2tog, k to end. P 1 row. Repeat last 4 rows once more — 47 sts. Ss 32 rows. Cast off for top edge.

P 1 row. Repeat last 4 rows 3 times more — 26 sts. Ss 6 rows, marking end of 4th of these rows.

Next row: Cast off 5 sts, k to last 2 sts, dec — 20 sts. P 1 row. Dec 1 st at each end of next row and 2 following alternate rows. P 1 row. Cast off 4 sts at beginning of next 2 rows — 6 sts. Cast off.

Left side: Work as given for right side, reversing shapings by reading p for k and k for p.

Gusset: With No. 10 (3¼ mm) needles and Walnut, cast on 7 sts. Beginning with a k row, ss 2 rows. Inc 1 st at each end of next row and following 4th row, then on 4 following alternate rows — 19 sts. Ss 29 rows. Dec 1 st at each end of next row and 6 following alternate rows — 5 sts. P 1 row. Cast off.

Ears (make 2)

With No. 10 (3¼ mm) needles and Walnut, cast on 22 sts. Beginning with a p row, ss 7 rows. **1st dec row:** K2, [k2tog, k1] twice, k2tog, k2, [skpo, k1] twice, skpo, k2 — 16 sts. Ss 3 rows. **2nd dec row:** K2, [k2tog] 3 times, [skpo] 3 times, k2 — 10 sts. P 1 row. **3rd dec row:** K1, [k2tog] twice, [skpo] twice, k1 — 6 sts. P 1 row. **4th dec row:** K1, k2tog, skpo, k1 — 4 sts. Break off yarn, leaving a long end. Thread end through remaining sts, draw up and secure.

To make up

Join back seams of legs and sew in soles. Stuff legs. With seam at centre back, join cast off edge of legs together. Sew top of legs to cast on edge of body front, then sew cast on edge of body base to body front and legs. Join side seams of body to armholes, then shoulder seams. Fold arms in half and join seams. Sew tops of arms to armholes. Stuff body and arms. Join sides of head from cast on edge to markers. Sew in gusset, sewing cast on edge to rows above markers. Stuff head and sew in place, enclosing neck edge of body. Sew on ears. With Black, embroider face features, then claws, in straight stitch. Add highlights to eyes with small stitches in White.

Right leg

Work as left leg to **. **Shape crotch:** Cast off 4 sts at beginning of next row and 2 sts on following row. **1st dec row:** K1, k2tog, k to last 3 sts, skpo, k1. P 1 row. **2nd dec row:** K to last 3 sts, skpo, k1. P 1 row. Repeat last 4 rows, once more — 47 sts. Ss 32 rows. Cast off for top edge.

To make up

Join back and front seams, then leg seams. Join waist length of elastic into a ring. Fold top 4 rows down to wrong side and slip stitch in place, enclosing the elastic.

Jacket

Back

With No. 10 (3¼ mm) needles and White, cast on 50 sts. K 4 rows. Change to No. 8 (4 mm) needles and Cherry. Beginning with a k row, ss 14 rows. **Dec row:** K2, [k2tog, k2] 6 times, [skpo, k2] 6 times — 38 sts. Ss 13 rows. **Shape armholes:** Cast off 4 sts at beginning of next 2 rows. Dec 1 st at each end of next row and 3 following alternate rows — 22 sts. Ss 9 rows. Cast off.

Left front

With No. 10 (3¼ mm) needles and White, cast on 30 sts. K 4 rows. Change to No. 8 (4 mm) needles. Using separate balls of yarn for each coloured area and twisting yarns together on wrong side at joins, continue thus: **1st row:** K26 Cherry, k4 White. **2nd row:** K4 White, p26 Cherry. These 2 rows form pattern. **Pattern 12 rows. Dec row:** With Cherry k2, [k2tog, k2] 6 times, k4 White — 24 sts. **Pattern 13 rows. Shape armhole:** Cast off 4 sts at beginning of next row. **Pattern 1 row. Dec 1 st** at armhole edge on next and 3 following alternate rows — 16 sts. **Pattern 4 rows. Shape neck: Next row:** Pattern 7 and leave these sts on a safety-pin, p to end. Dec 1 st at neck

edge on next row and following alternate row — 7 sts. P 1 row. Cast off.

Right front

With No. 10 (3¼ mm) needles and White, cast on 30 sts. K 4 rows. Change to No. 8 (4 mm) needles. Using separate balls of yarn for each coloured area and twisting yarns together on wrong side at joins, continue thus: **1st row:** K4 White, 26 Cherry. **2nd row:** P26 Cherry, k4 White. These 2 rows form pattern. **Pattern 12 rows. Dec row:** K4 White, with Cherry k2, [skpo, k2] 6 times — 24 sts. **Pattern 14 rows. Shape armhole:** Cast off 4 sts at beginning of next row. Dec 1 st at armhole edge on next row and 3 following alternate rows — 16 sts. **Pattern 4 rows. Shape neck: Next row:** P9, turn, then leave remaining 7 sts on a safety-pin. Dec 1 st at neck edge on next row and following alternate row — 7 sts. P 1 row. Cast off.

Sleeves (make 2)

With No. 10 (3¼ mm) needles and White, cast on 26 sts. K 4 rows. Change to No. 8 (4 mm) needles and Cherry. Beginning with a k row, ss 4 rows. Inc 1 st each end of next row and 2 following 4th rows — 32 sts. Ss 5 rows. **Shape top:** Cast off 4 sts at

beginning of next 2 rows. Dec 1 st at each end of next and 3 following alternate rows. P 1 row. Cast off 3 sts at beginning of next 4 rows — 4 sts. Cast off.

Neckband

Join shoulder seams. With right side facing and using No. 10 (3¼ mm) needles and White, k7 sts from right front safety-pin, pick up and k6 sts up right front neck, 10 sts across back neck, 6 sts down left front neck then k7 sts from left front safety-pin — 36 sts. K 4 rows. Cast off kwise.

Belt

With No. 10 (3¼ mm) needles and Black, cast on 5 sts. Work in gst until belt measures 30 cm/11¼ in. Cast off.

To make up

Set in the sleeves, then join the side and sleeve seams. Sew on

press studs to front bands. Sew the buckle to one end of the belt.

Hat

With No. 10 (3¼ mm) needles and White, cast on 69 sts. K 4 rows. Change to No. 8 (4 mm) needles and Cherry. Beginning with a k row, ss 20 rows. **1st dec row:** K2, [k2tog, k6, skpo, k1] 6 times, k1. Ss 7 rows. **2nd dec row:** K2, [k2tog, k4, skpo, k1] 6 times, k1. Ss 5 rows. **3rd dec row:** K2, [k2tog, k2, skpo, k1] 6 times, k1. Ss 3 rows. **4th dec row:** K2, [k2tog, skpo, k1] 6 times, k1. Ss 3 rows. **5th dec row:** K1, k2tog, [sl1, k2tog, pssso] 5 times, skpo, k1. Ss 3 rows. **6th dec row:** [Sl1, k2tog, pssso] 3 times — 3 sts. P 1 row. Cast off. Join back seam. With White, make a small pompon and sew to top of hat.

Boots

With No. 8 (4 mm) needles and Black, cast on 29 sts. K 2 rows. Beginning with a k row, ss 14 rows. **Shape instep: Next row:** K20, turn. **Next row:** P11, turn. Ss 8 rows on centre 11 sts only for instep. Break off yarn. With right side facing, rejoin yarn at base of instep and pick up and k7 sts along first side of instep, k2tog,

k7, skpo across centre 11 sts, pick up and k7 sts along other side of instep, k9 — 41 sts. Beginning with a p row, ss 4 rows. K 1 row. **Shape sole: Next row:** Cast off 16 sts, k to last 16 sts, cast off these 16 sts. With wrong side facing, rejoin yarn to centre 9 sts and k 23 rows. Cast off. Join back seam of boot. Set in sole. Make one more.